

FREE DISTRIBUTION ONLY. NOT FOR SALE

Antique Pattern Library

For more information, please see our website at: <http://www.antiquepatternlibrary.org>

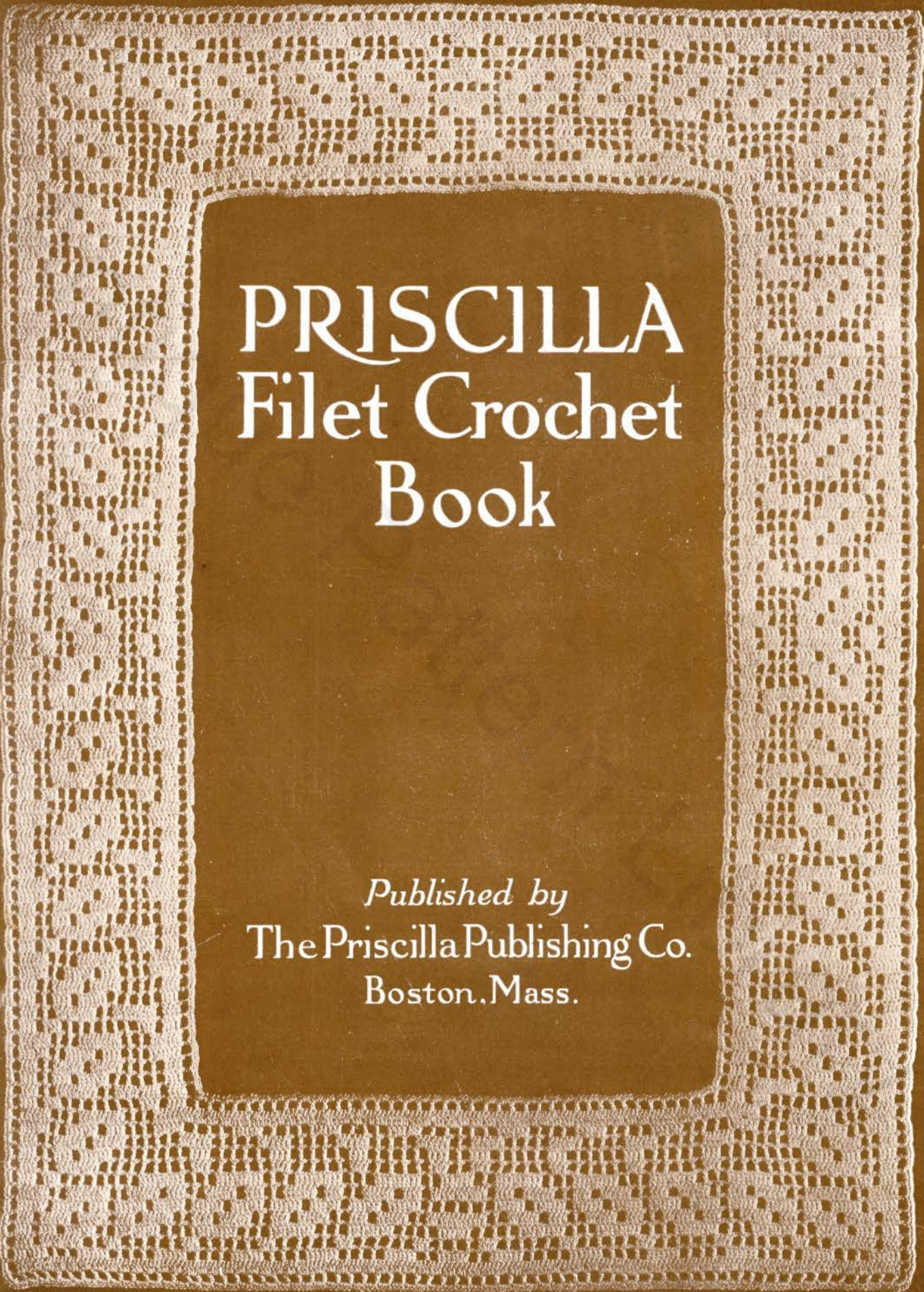
This is a scan of an antique book that is, to the best of our knowledge, in the public domain. The scan itself has been edited for readability, and is licensed under the **Creative Commons** Attribution-NonCommercial-ShareAlike License. To view a copy of this license, visit <http://creativecommons.org/licenses/by-nc-sa/2.5/> or send a letter to Creative Commons, 559 Nathan Abbott Way, Stanford, California 94305, USA.

You may share copies or printouts of this scan freely. You may not sell copies or printouts.

Antique Pattern Library is a project of New Media Arts, Inc. <http://www.newmediaarts.org>, a nonprofit organization tax-exempt under IRC 501(c)(3). Donations may be tax deductible, depending on your tax status and tax jurisdiction.

Donated by

Judith Adele 2006



PRISCILLA
Filet Crochet
Book

Published by
The Priscilla Publishing Co.
Boston, Mass.

"PERI-LUSTA" MERCERIZED COTTONS

RETAIN THEIR LUSTER AND COLOR AFTER REPEATED WASHING

FOR ALL EMBROIDERY AND CROCHET WORK

First and Still



Foremost

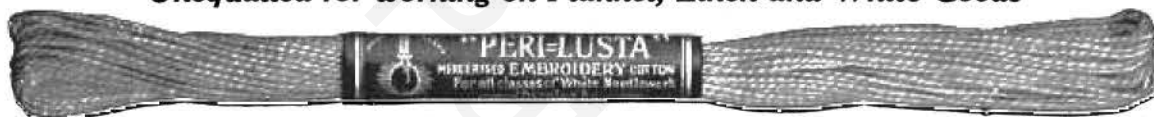
See this Trade-Mark on every skein or ball

This well-known brand is made of Sea Island Cotton in many different twists and sizes, suitable for all classes of Needlework. The "PERI-LUSTA" Threads have a *silken luster* imparted to them by a special process.

WE RECOMMEND

"PERI-LUSTA" White Embroidery Art. 4

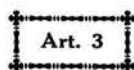
Unequaled for working on Flannel, Linen and White Goods



SUPPLIED IN WHITE IN SIZES A, B, C, D, E, F, G, H, COARSE TO FINE

FOR COLORED EMBROIDERY USE

"PERI-LUSTA" Indelible



A medium twisted two-ply cotton in 16-yard skeins. Correct Twist for Colored Embroidery.



"PERI-LUSTA" Rope Art. 16

A heavy loosely twisted two-ply cotton in 8-yard skeins. Soft and silky



FOR ALL KINDS OF NEEDLEWORK

"PERI-LUSTA" Indelible and "PERI-LUSTA" Rope are supplied in all leading art embroidery shades and are fast to washing with warm water and neutral soap

"PERI-LUSTA" is on sale in Art Needlework Departments and Fancy Goods Shops

ACCESSORIES FOR CROCHETING AND TATTING



“PERI-LUSTA” Crochet Cotton Art. 18

IN WHITE, ECRU AND COLORS

Recommended for all Crochet Work and Tattling.

Absolutely Uniform and Even in Working. Has that smoothness so much appreciated by Crocheters.

WHITE — Supplied in sizes: 1, 2, 3, 5, 10, 15, 20, 30, 40, 50, 60, 70, 80, 100, 150.

ECRU — Supplied in sizes: 1, 2, 3, 5, 10, 15, 20, 30, 40, 50, 60, 70, 80.

ARABIAN — Supplied in sizes: 20, 40.

LIGHT PINK, MEDIUM PINK, LIGHT BLUE, MEDIUM BLUE, DARK BLUE, RED, YELLOW, LAVENDER, BLACK — Supplied in sizes: 3, 10, 30, 50, 70.



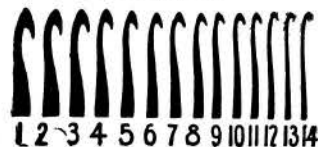
Insertion and Edging crocheted with “Peri-Lusta” Crochet Cotton

“INDIAN” STEEL CROCHET HOOK



Made of Solid Steel, Heavily Nickel-Plated and Well Finished
The Flat Centre Gives Perfect Control

Made in Sizes:



“WRISTLET” HOLDERS AND CROCHET BALL STAND

SIMPLIFY CROCHETING AND KNITTING



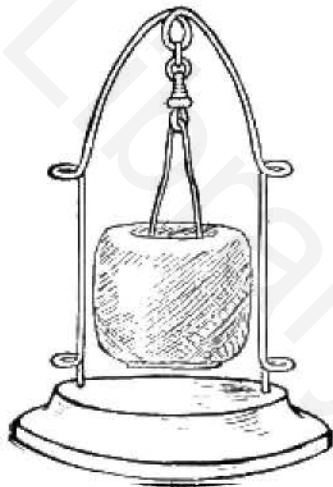
Wool Holder No. 1153



Ball Holder No. 1142

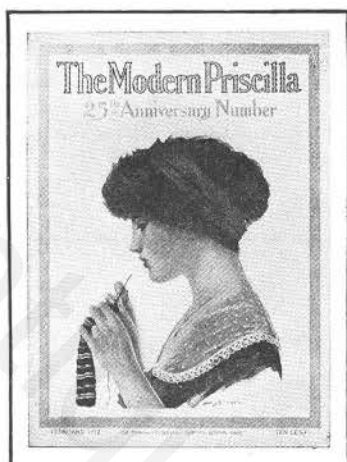
AVOIDS TANGLING OR DROPPING OF THE BALL.

UNWINDS AS YOU USE IT.



Crochet Ball Stand No. 1170

ABOVE ARTICLES ARE TO BE HAD AT YOUR DEALER



The Most Helpful Magazine For Women

There are many magazines devoted to *stories*, many others filled with miscellaneous matter of more or less value and general interest; but there is just *one* magazine that specializes in the two subjects most closely associated with the average woman's daily life — "**Fancy-Work**" and "**Housekeeping**" — with just enough clever, wholesome fiction added to give zest. That magazine is **The Modern Priscilla.**

WHAT "FANCY-WORK" MEANS

When they see or hear the word "*Fancy-Work*," many people think only of *Art Needlework*. But as used by THE MODERN PRISCILLA, the expression "*Fancy-Work*" has a much broader meaning. It includes not only *Embroidery*, in all its manifold varieties, but it includes as well such feminine handicrafts and occupations as *Knitting, Crochet, Lace-making, Weaving, Netting, Tatting, Basketry, Bead-work, Oil, Water-color, and China Painting, Stenciling, Art Brass Work, Art Leather Work, Pyrography*, and the like.

In THE MODERN PRISCILLA space is devoted to *all* these subjects from time to time, and no other magazine covers them half so thoroughly.

WHAT PRISCILLA GIVES

In connection with what is broadly termed "*Fancy-Work*," THE MODERN PRISCILLA gives a three-fold service: 1. It supplies designs in infinite variety and of rare beauty (from 50 to 100 each month), with patterns for those who desire them. 2. It gives detailed and explicit instruction, so clear and complete that any woman of average intelligence can gain proficiency in the work that most appeals to her. 3. It provides a wealth of suggestions for the practical use and application of the knowledge thus gained.

HOW FASHIONS FIT IN

This last service is especially noticeable in the *Fashion Department*, where in addition to sane and sensible adaptations of the latest modes, the use of the most appropriate embroidery is pictured and described in connection with each costume illustrated.

HOW PRISCILLA SAVES ITS COST

"*Fancy-Work*," it will now be seen, at least the "*Fancy-Work*" that THE MODERN PRISCILLA stands for, is no frivolous occupation for idle hours, but a decidedly *useful* occupation, that will supply at small cost many a dainty bit of wearing apparel or household decoration that could otherwise be had only at considerable expense, or perhaps could not be afforded at all.

Many a subscriber has gratefully acknowledged this debt to Priscilla, more than a few asserting that a *single copy* has often suggested economies amounting to more than the year's subscription price.

HOW A GOOD MAGAZINE WAS MADE BETTER

Much as can truthfully be said about the "*Fancy-Work*" value of THE MODERN PRISCILLA, scarcely half the story has been told.

In 1911 the publishers of THE MODERN PRISCILLA purchased the well known domestic science magazine called "*Everyday Housekeeping*," and in due season merged it with their older publication, making what has well been called a "*Double Value Magazine*."

THE MISSION OF "EVERYDAY HOUSEKEEPING"

"*Everyday Housekeeping*" is now a distinct and separate section of THE MODERN PRISCILLA, and it is the aim of the editors to make it of the greatest possible helpfulness to Priscilla readers.

Its recipes are economical, appetizing and nourishing, its special articles are authoritative and deal with practical subjects, its hints, helps and suggestions are gleaned from the experience of housekeepers the country over.

THE PRICE SMALL — THE VALUE UNUSUAL

When all the foregoing is considered, even the most critical must admit that at \$1.00 a year THE MODERN PRISCILLA is an exceptional value (Canadian subscription price, \$1.25) and that its steady growth in circulation from a few hundred copies 25 years ago to nearly 400,000 to-day is but the natural outcome of its policy of helpfulness.

The news-stand price of THE MODERN PRISCILLA is 10 cents a copy. Orders for subscriptions should be sent to *The Priscilla Publishing Company, 85 Broad Street, Boston, Mass.*

The
Priscilla Filet Crochet Book

A COLLECTION OF BEAUTIFUL DESIGNS
IN FILET CROCHET

EQUALLY ADAPTED TO CROSS-STITCH
BEADS AND CANVAS

WITH

Working Directions

BY

BELLE ROBINSON

PRICE, 25 CENTS

PUBLISHED BY

The Priscilla Publishing Company

85 BROAD STREET, BOSTON, MASS.

Copyright, 1911, by The Priscilla Publishing Company, Boston, Mass.

Entered at Stationers' Hall, London
All rights reserved



NO. 1450. PILLOW IN FILET CROCHET AND CROSS STITCH EMBROIDERY

See Page 5 and Figs. 12, 13, 15, 16, 18

Filet Crochet

The definition frequently given of Filet Crochet is, "crocheting in imitation of Filet." While that is true, yet it is, in a way, misleading. The word "imitation" may be objected to because it usually carries with it a meaning of inferiority. Always, a substitute, a pretence, a sham comes to mind when an imitation of the "real" is mentioned.

Rather let us define it as "Crocheting in the style of Filet," for if Filet Crochet is rightly done it is no less a "real" piece of work than the Filet which it is like. It requires no less skill, no less care, and perhaps no less time to crochet a good piece of Filet than it does to net the fabric and darn or weave or embroider through it the pattern. Those who have done both can testify to the truth of this.

Our grandmothers did more or less crocheting, using this principle, so that it is nothing new; and yet, possibly, it has remained for this twentieth century to bring forward and perfect the work, adapting it to more uses and larger designs, and carrying out the designs in finer threads.

It is, like Irish Crochet, at its very best when done with fine thread and the very finest needle. And yet it may be done with coarse thread and a suitable needle and produce a very handsome piece of work, always providing that the crocheting is firm and evenly done.

MATERIALS

The materials used may be any spool thread that is at hand, or one may select any good crochet cotton.

Of the pieces shown in this book, the most of the work was done with "D. M. C." Crochet Cotton (Cordonnet Special), Nos. 10, 30, 50, and 100.

For No. 10 crochet cotton, the crochet hook should be about No. 10, not coarser. For No. 30, a No. 12 hook, and anything finer can best be done with No. 14.

Patterns readily suggest themselves for simple bits of work, after one has started the crocheting, but for larger pieces and more elaborate designs, any block pattern is easily followed.

The collection of patterns given in this book is culled from a variety of sources, and is equally adapted to Filet Crochet, Filet Brodé, Cross-stitch, and various sorts of Canvas-work.

Having procured the needle and thread and pattern (a simple equipment!), one is ready for the lesson.

EXPLANATION OF TERMS

D c—double crochet; having a stitch on the needle, one loop over the needle, one loop through the chain or top of stitch below, one loop through two on the needle, one loop through the remaining two.

S c—single crochet, a stitch on the needle, a loop under the chain below, a loop through the two on the needle. This is used only in finishing edges, not in the designs.

T c—treble crochet, a stitch on the needle, two

loops over the needle, one loop through the work, then crochet off two and two.

The first thing to do, is to find out whether one crochets "square." Many people do this naturally; more, we are inclined to believe, do not. Much time is saved if this is one's habit.

Find out in this way; copy Working Model, Fig. 1. Notice there are ten meshes, then the foundation chain will be ten times 3, plus 1, plus 5 to turn, altogether 36 chain.

Turn, join with a d c in the 9th stitch from the needle, which completes the first open mesh. The following nine meshes are each made with 2 chain, 1 d c in the 3d chain-stitch.

Take up two threads of the chain when crocheting the first row. Crochet 5 chain-stitches to turn, join with a d c in the top of the next d c below, taking up two threads.

Proceed in this way until ten rows are finished, and if the piece is square, one may be sure of crocheting easily. If the piece is longer from right to left, then either the chain-stitches and top of d c are too loose, or the d c is drawn up too short. In making the d c pull the top tightly, but do not pull the whole d c too short.

It is easier to apply the remedy in a little piece than in a large one, where a very little difference in the tension makes a big difference in the outcome. If, however, the greater length is in the other direction, the probability is that the d c is drawn out too long.

Then try Working Model, Fig. 2, with the same number of stitches. The first row is ten open meshes, like Fig. 1. The second row is made with 5 chain to turn, 1 d c in d c below, eight solid meshes and one open mesh.

A solid mesh is formed by a d c over the d c, 2 d c over the chain, 1 d c over the next d c, making 4 d c if it is a single solid mesh. If other solid meshes follow then there is added 2 d c for each chain and 1 d c over d c.

The number of d c in any number of solid meshes is equal to 3 times the number of meshes with 1 d c in addition.

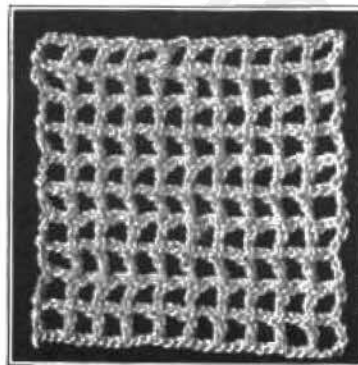


FIG. 1.
Working Model of Filet Crochet, 10 meshes square.

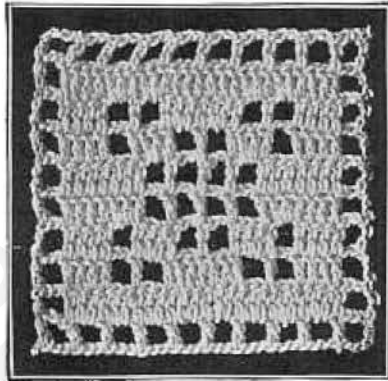


FIG. 2
Working Model of Pattern Fig. 3

It will always be one more than a multiple of 3, as 4, 7, 10, 13, 16, 19, etc.

In the 3d row (following Working Model, Fig. 2, and Block Pattern, Fig. 3) there is, 1 open, 1 solid, 2 open, 2 solid, 2 open, 1 solid, 1 open.

4th row—One open, 1 solid, 1 open, 1 solid, 2 open, 1 solid, 1 open, 1 solid, 1 open.

5th row—One open, 2 solid, 4 open, 2 solid, 1 open.

6th row—Like 5th. 7th row—Like 4th. 8th row—Like 3d. 9th row—Like 2d. 10th row—Like 1st.

Always remembering to make 5 chain for the turn in the square work. This makes an open mesh, and it is always much better to have any design with at least one row of open meshes on all four sides.

It is really quite worth while to make a block like this Fig. 2 and find out if it is square.

When doing a long strip or band, it may not be so essential, although the work is prettier; but when making a square block, it should be square.

Working Model, Fig. 4, is a triangular block, made after the pattern, Fig. 5.

After making nine open meshes, use the t c (with two loops), and join to make the last mesh a triangle. To turn for the 2d row, make 3 rather loose or 4 quite tight chain-stitches and join with d c to make another triangular mesh. This is the first of 4 d c that form a solid mesh. Following the pattern—1 open, 1 solid, 1 open, 1 solid, 1 open, 1 solid, 1 open. (Turn with 5 chain at this end.)

3d row—Seven open meshes, 1 triangular mesh.

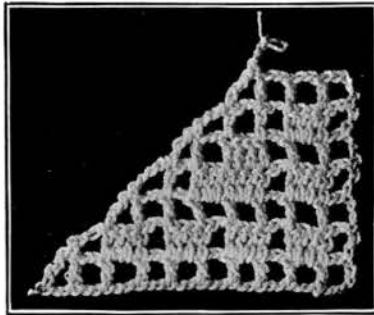


FIG. 4
Working Model of Pattern Fig. 5

4th row—Turn with triangle, 1 open, 2 solid, 1 open, 1 solid, 1 open. Turn with 5 chain.

5th row—Three open, 1 solid, 1 open, 1 triangle.

6th row—Turn with triangle, 2 open, 1 solid, 1 open.

7th row—Turn with 5, 3 open, 1 triangle, etc.

In Filet, it is a rare exception that has not one row, or more, of open meshes outside the design, and we should follow the same rule in Filet Crochet.

The edge of a medallion or insert is usually covered with single crochet, three stitches over each chain of two and four stitches over each triangular mesh. This corresponds nicely with the buttonhole-stitch with which the netted medallion is invariably finished.

Figure 6 is a model of the border of Doily, Fig. 22, showing how to mitre the corner in a way similar to Fig. 4. The two outer rows give the method used to finish the Centrepiece, No. 1452.

Figure 7 is the model showing the heart of flower in the corner of Luncheon Cloth, No. 1454.

A chain of five is made to cover the space of two open meshes.

In estimating the size a pattern will fill, with the various threads, it may be helpful to know that No. 100 D. M. C. Crochet Cotton makes very good fabric, ten meshes to the inch; No. 50, eight meshes to the inch; No. 30, six meshes; and No. 10, between four and five meshes to the inch.

Individual workers vary some, but this is a good average, and represents the work here illustrated.

When crocheting for any length of time, and working as tightly as possible, the fingers may become chafed with the thread or needle. To avoid this, a good plan is to use chamois-skin glove fingers wherever they are needed. Bits of chamois skin may be sewed to fit whichever thumb or finger suffers most. The right-hand thumb, which holds the needle, and the first and second fingers of the left hand, which carry the thread and stop the point of the needle, were all so protected in doing much of the finished work in this book.

Although the crocheting, when in process, can be kept immaculate, by powdering the hands, and keeping the work in a tightly covered box when not in process, yet it is very much improved by laundering.

This should be done by careful squeezing, rather than rubbing, in good soap-suds, and rinsing well without twisting the work. When it is soiled, dampen and lay it on a flat surface and rub soap well into it with a small bristle brush.

Washing shrinks the thread until it is considerably smaller than the original measure. Ironing, face downward, between two pieces of cheese-cloth, on a thickly padded board (when not quite dry), will restore it to the exact size first measured. Careful finishing with the iron next the wrong side, flattens the work and brings out the design beautifully.

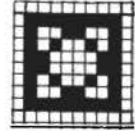


FIG. 3
Pattern of Fig. 2

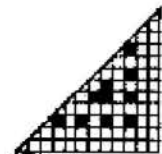


FIG. 5
Pattern of Fig. 4

Filet Crochet is so simple, so easily understood, there is nothing intricate about it; but the fact cannot be overemphasized that great care must be taken to do the work evenly and rather tightly. When one can be sure of the right proportion between the chain-stitch and the double crochet, that one is tight and the other just loose enough, then the worker who can crochet rapidly will make the best work. It becomes almost automatic, and

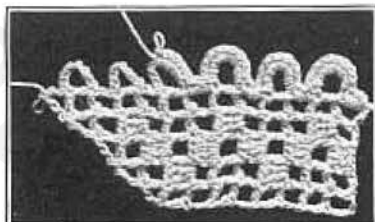


FIG. 6
Working Model, Border, Fig. 22

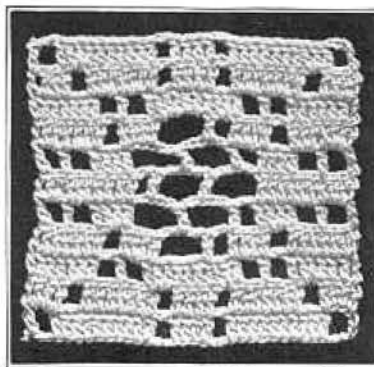


FIG. 7
Working Model, Heart of Flower, Fig. 27

the result is a beautiful uniformity throughout the whole piece, whereas if one must, in a labored way, pull each stitch with a distinct effort, the work is very likely to look pinched and drawn.

No. 1450. Pillow in Filet Crochet and Cross Stitch

This pillow, shown on page 2, is composed of twenty-five blocks, each four inches square. Twelve blocks are of Hardanger cloth, embroidered with cross-stitch, in D. M. C. Stranded Cotton. Two threads of the cotton are used. For the designs see Fig. 12 and Fig. 13 on page 7.

Thirteen blocks are in Filet Crochet of D. M. C. Crochet Cotton No. 50. Three different designs are used, "The Swan," "The Dragon," and a conventional figure, see Fig. 15, Fig. 16, and Fig. 18, on page 7. These blocks are 33 meshes, requiring 105 chain stitches for the foundation chain, this includes 5 chain to turn. Join in the 9th stitch from the needle with a d c. Two chain-stitches separate the d c, making an open mesh. Always at the turn 5 chain are made for the first open mesh.

Two rows of open meshes are made (in the "Swan" block 3 rows are made) before beginning the design. In the 3d row of the "Dragon" make 2 open, 2 solid, 1 open, 1 solid, 6 open, 3 solid, the remainder of the row open. Turn, make 18 open, 1 solid, 1 open, 2 solid, 6 open, 3 solid, 2 open, etc. The designs can be followed back and forth in this way until the squares are completed. Finish



FIG. 8 23 x 35 meshes



FIG. 9 65 meshes

the edge around each square with s c, 3 stitches over each chain of 2.

The cross-stitched blocks are cut a big seam larger than the crocheted blocks, machine-stitched just outside the turn, and are overcast in addition to keep them from fraying, as a seam in Hardanger cloth is always treacherous. Then the blocks are

overcast together tightly, cross-stitched blocks and crocheted blocks alternating. The pillow-top is ready for the back, which must be overcast to the top. No other seam is possible along the edges of the crocheting. The color used for cross-stitch was old rose. The effect of this "patchwork" determined its selection as Frontispiece.

Fig. 10. Conventional Flower Doily

This doily presents a problem not unlike the proverbial "fitting of a round peg in a square hole," and there is added the puzzling task of crocheting to a foundation where there is no chain. 'Tis true

To make the doily, start with 12 meshes, that is, chain 36 plus 1 plus 5 stitches equals 42, d c in 9th stitch and make 12 open meshes in the 1st row.

2d row — Chain 12, plus 5 to turn, d c in 9th st and make 4 open meshes (it is easy to carry out chain at the last end of a row, to widen at the first of the succeeding row), 12 solid meshes, then make 4 open meshes as follows:

Two chain, 1 double treble (d t) (3 loops) and join this d t at the top of the 1st row. Three times more, make this square mesh and join each time on a line with the top of the 1st row, forming 4 open meshes. At the end of each added mesh, the needle is left at the top of the mesh, ready to make another or to turn.

This peculiar method is necessary in widening at the end of a row where there is nothing to crochet to, and three sides of a mesh must be made as one proceeds. To narrow, simply omit one or more meshes at the last end of the row. At the first end, draw the stitch on the needle the length of a mesh and slip in the top of d c. Repeat this for each mesh that is to be omitted, then make 5 chain for an open mesh and proceed according to the design, Fig. 43 on page 22. The loose threads left in this way are nicely covered when the edge is finished with s c.

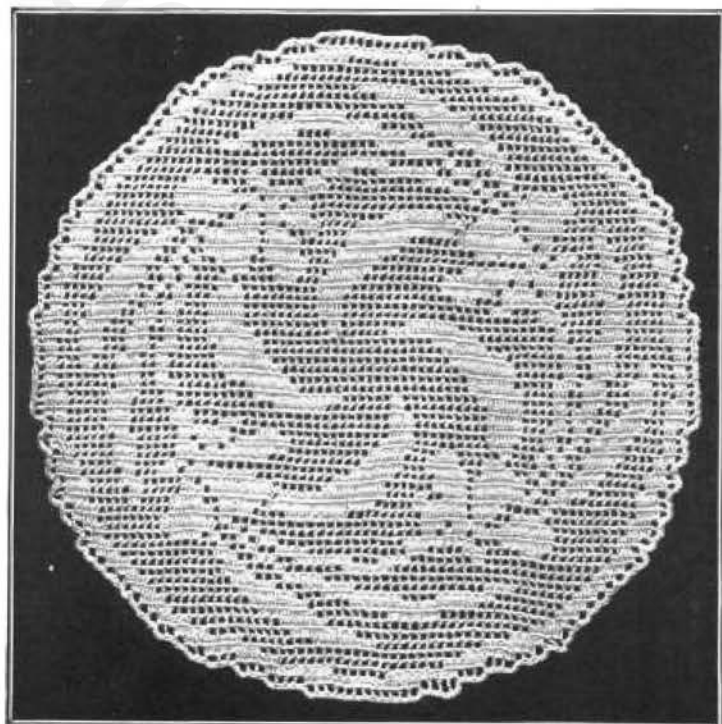


FIG. 10. FLOWER DOILY. See Fig. 43

72 meshes

one might break the thread and add a chain, but it can be accomplished with one thread, as was done in this case. Number 100 D. M. C. Crochet Cotton was used, and the doily measured 6¾ inches in diameter. The crochet needle required is No. 14.

When the last row of twelve open meshes is finished, make one chain-stitch and cover the edge with 3 s c over each single side of a mesh, and 5 s c where two sides of a mesh form the edge. The final caution is to make the crocheting square.

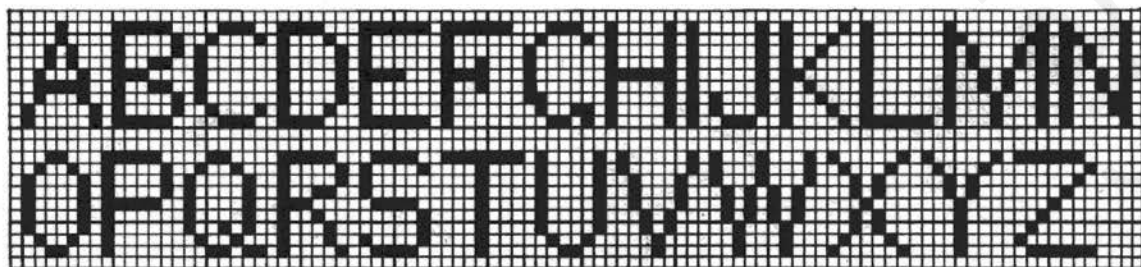


FIG. 11. See Fig. 36

9 meshes

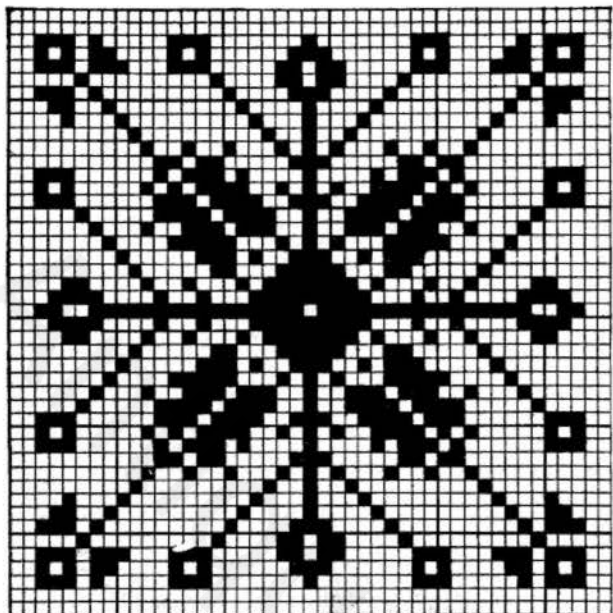


FIG. 12. See No. 1450

45 meshes

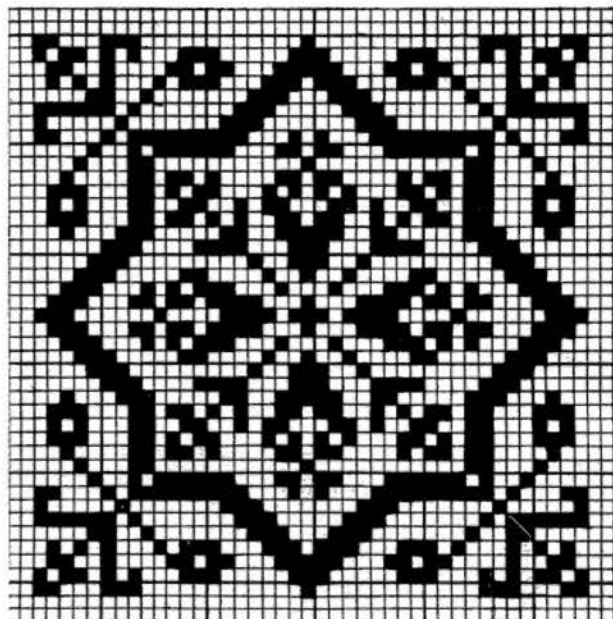


FIG. 13. See No. 1450

45 meshes

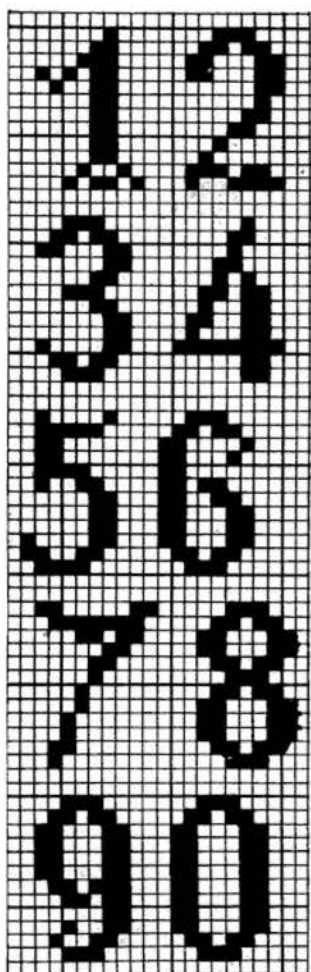


FIG. 14

12 meshes

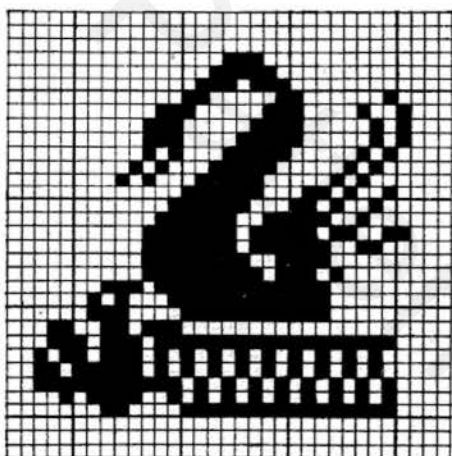


FIG. 15. See No. 1450

33 meshes

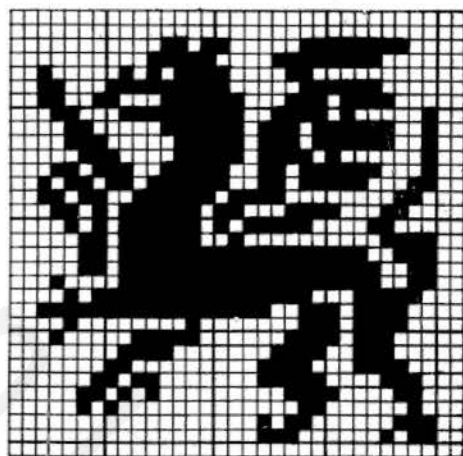


FIG. 16. See No. 1450

33 meshes

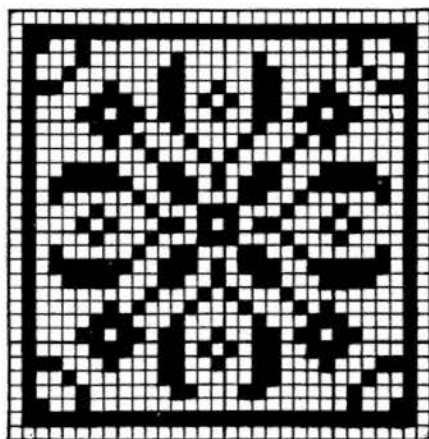


FIG. 17

31 meshes

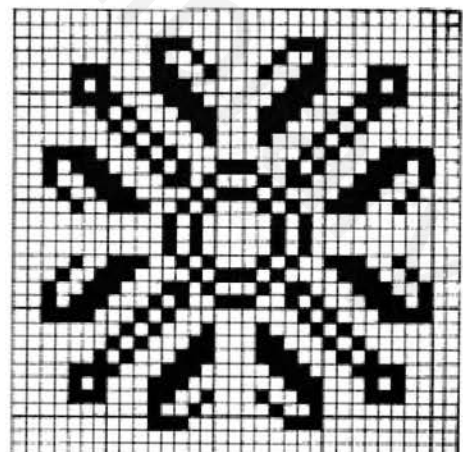


FIG. 18. See No. 1450

33 meshes

Figs. 16, 17, 18. Guest Towels

These guest towels are of 16-inch huckaback, and 30 inches long. The thread used is No. 30 D. M. C. Crochet Cotton. One ball is sufficient for each towel.

Figure 19—Insertion, at one end, 16 meshes wide, with letters 14 meshes high (see Figs. 114 and 126), and a 5-mesh insertion (see Working Model, Fig. 6) at the other.

Figure 20—A band, 11 meshes wide, with letters 7 meshes high (Fig. 128), finishes this guest towel at one end, and at the other a band 5 meshes wide. (See Insertion for Baby's Pillow, No. 1451.)

Figure 21—This insertion is commenced with

9 meshes (for pattern see border, Fig. 59), then widened to 18 meshes through the centre where the initials, 14 meshes wide (Fig. 114), are made. Then the band is continued 9 meshes wide to the end, reversing the pattern at the beginning. The other end of the towel is finished with a band 4 meshes wide and readily followed from the cut.

Fig. 22. Doily

Two medallions of 23 meshes (Fig. 98) and two of 25 meshes (Fig. 105) are inset in this 11-inch doily.

The edge is shown at Fig. 6, page 5. This requires one ball of No. 100 D. M. C. Crochet Cotton, and one-third yard of fine huckaback, 24 inches wide, will make two doilies, useful and pretty.



FIG. 19. GUEST TOWEL. See Figs. 114 and 126

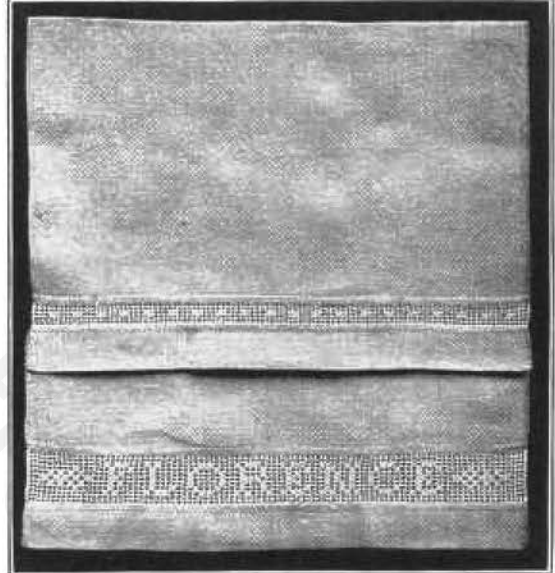


FIG. 20. GUEST TOWEL. See Fig. 128



FIG. 21. GUEST TOWEL. See Fig. 101



FIG. 22. DOILY. See Figs. 6, 98, 105

No. 1451. Baby Pillow

This daintily embroidered pillow of linen supports a hollow square of Filet Crochet insertion to frame "the baby's face." The centre of the pillow is reserved for that decoration or use.

The insertion is made of No. 100 D. M. C. Crochet Cotton. For the design, see Fig. 32, page 17. It is 100 meshes square and 20 meshes wide, measuring 10 inches each way and 2 inches wide. A little more than one-quarter of the design is given, the rest being reversed: It is started at the lower left-hand corner with 306 stitches (including the turn). One row of open meshes, turn, 1 open, 98 solid, 1 open. Turn, 1 open, 1 solid, 96 open, 1 solid, 1 open, etc. When 20 rows are finished, turn, and follow the design up the right-hand

side, 20 meshes wide, until 79 rows are done. Break the thread and begin at the inside of the frame, 20 meshes from the left edge and carry up the left side 80 rows. The 80th row will end at the inside corner of upper left-hand. Do not break the thread, but chain 179 and make 1 d c in the 1st stitch of the right-hand side. Finish this 80th row across according to the pattern and make 20 rows entirely across, reversing the first 20 rows.

Four yards of insertion are required for the ruffle. This insertion is 5 meshes wide. In the 1st and 2d rows the centre mesh is solid. The 3d, 4th, and 5th rows are all open. Repeat these 5 rows for the length required. The pillow appears larger, but is only 16 inches square.



NO. 1451. BABY PILLOW. See Fig. 32, page 17

No. 1452. Centrepiece in Filet Crochet and Cross Stitch

This novel centrepiece of No. 10 D. M. C. Crochet Cotton, is made somewhat after the fashion of the crocheted frame in the Baby Pillow, No. 1451. The hollow square is partly filled with a figure in the form of a Greek cross, leaving four openings about 4 inches square. These are filled with cross stitched, hemstitched blocks of Hardanger cloth. The crocheting (see Fig. 23) is started at "A" with a chain of 276 stitches, making 90 meshes.

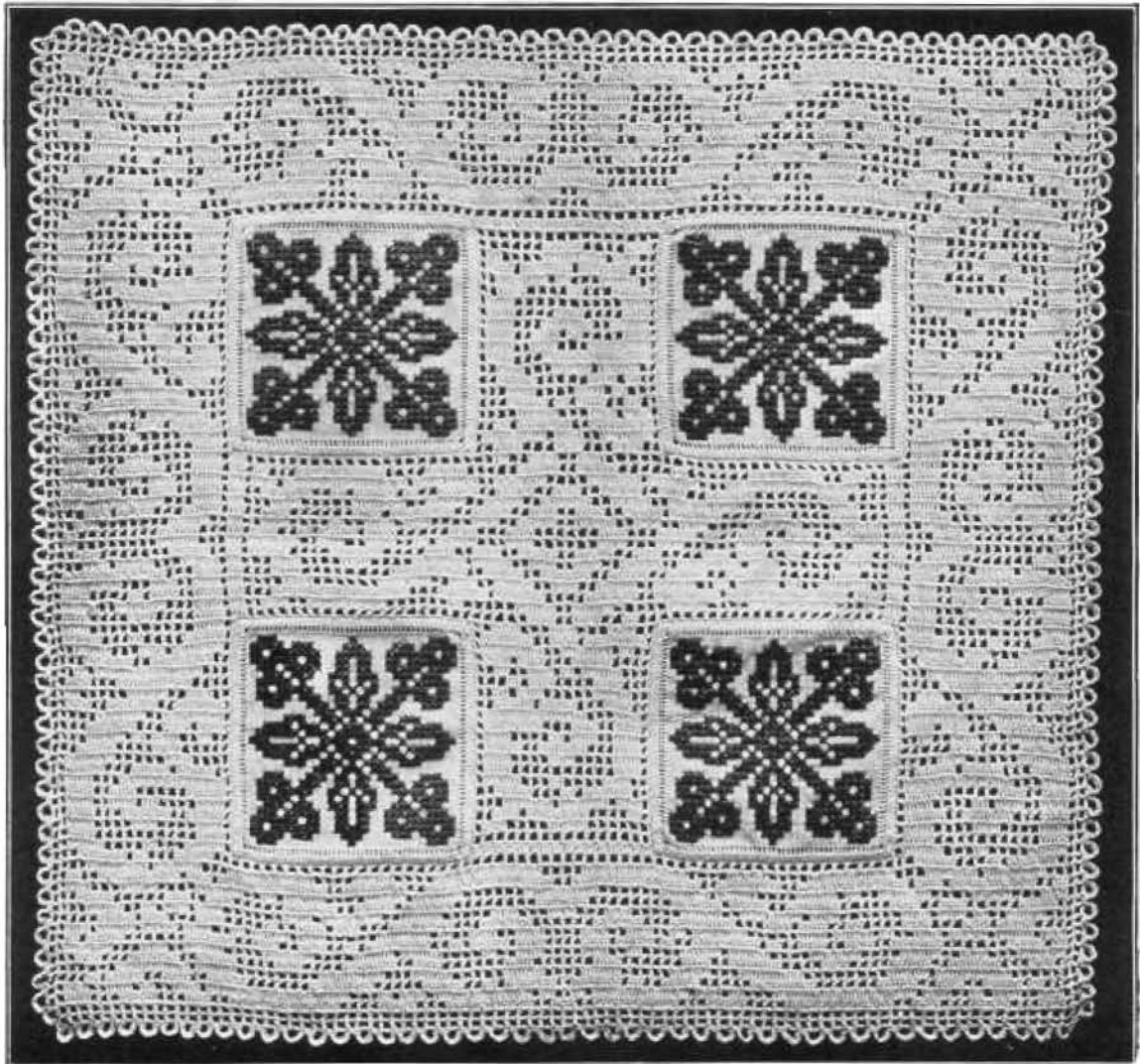
It may be difficult, in turning the work back and forth, to distinguish right and left, but if a short thread is left at the beginning of the foundation chain, that is to be considered the left side.

When 16 rows of the pattern are completed, at "B," the work is carried on 16 meshes wide until 21 rows of the right-hand side are finished. Leaving the ball of thread at that point, start another thread at "C," and carry this band up until 20 rows are finished. Cut and fasten the thread.

Start at "D" and finish 20 rows of this band, cut and fasten the thread. Then take up the thread left at "E," chain 62 stitches, follow the pattern across the middle band, chain 62, follow the pattern across the left band. This completes the 21st row of the central band and left side.

Make 16 rows entirely across the work.

Starting from "F," make 21 rows, 16 meshes



NO. 1452. CENTREPIECE IN FILET CROCHET AND CROSS STITCH EMBROIDERY

See Figs. 23 and 53

wide, leaving the thread at "H" as at "E." Start another thread at "X," make 20 rows of the upper central band, cut and fasten the thread. At "XX" start another thread, make 20 rows of right-hand side, cut and fasten the thread.

Take up the thread left at "H," chain 62, make 1 row across centre band, chain 62, make 1 row across right-hand side. Sixteen rows of the pattern will complete the frame. Make the two outer rows of Fig. 6, page 5, for the edge.

The cross stitch design is Fig. 52, page 23, and when the blocks are overcast in their places, the centrepiece is finished. The cross stitch is done with stranded cotton, and the undivided cotton is used because the crocheting is quite heavy.

Upon comparing the centrepiece and the design, at first glance it may appear that the design has

only one row of open meshes for outside margin, while the centrepiece has two rows. But the second of these is part of the border. 1st row—Fasten the thread at the top of a d c, make an open mesh (5 chain, 1 d c), * 8 chain, 1 d c on last d c, 1 d c in next d c of centrepiece, 2 chain, 1 d c in next d c of centrepiece *. Repeat from * to *. 2d row—Cover with s c, 7 or 8 over each scallop and 2 or 3 along the meshes.

Different ways in which this handsome square may be used will suggest themselves, and one may also use the border and the cross independently. Omitting the fancy purl edge shown in the illustration, a number of the squares might be joined together to form a counterpane, or the border alone could be set diamond fashion in the centre and enclose an initial or monogram.

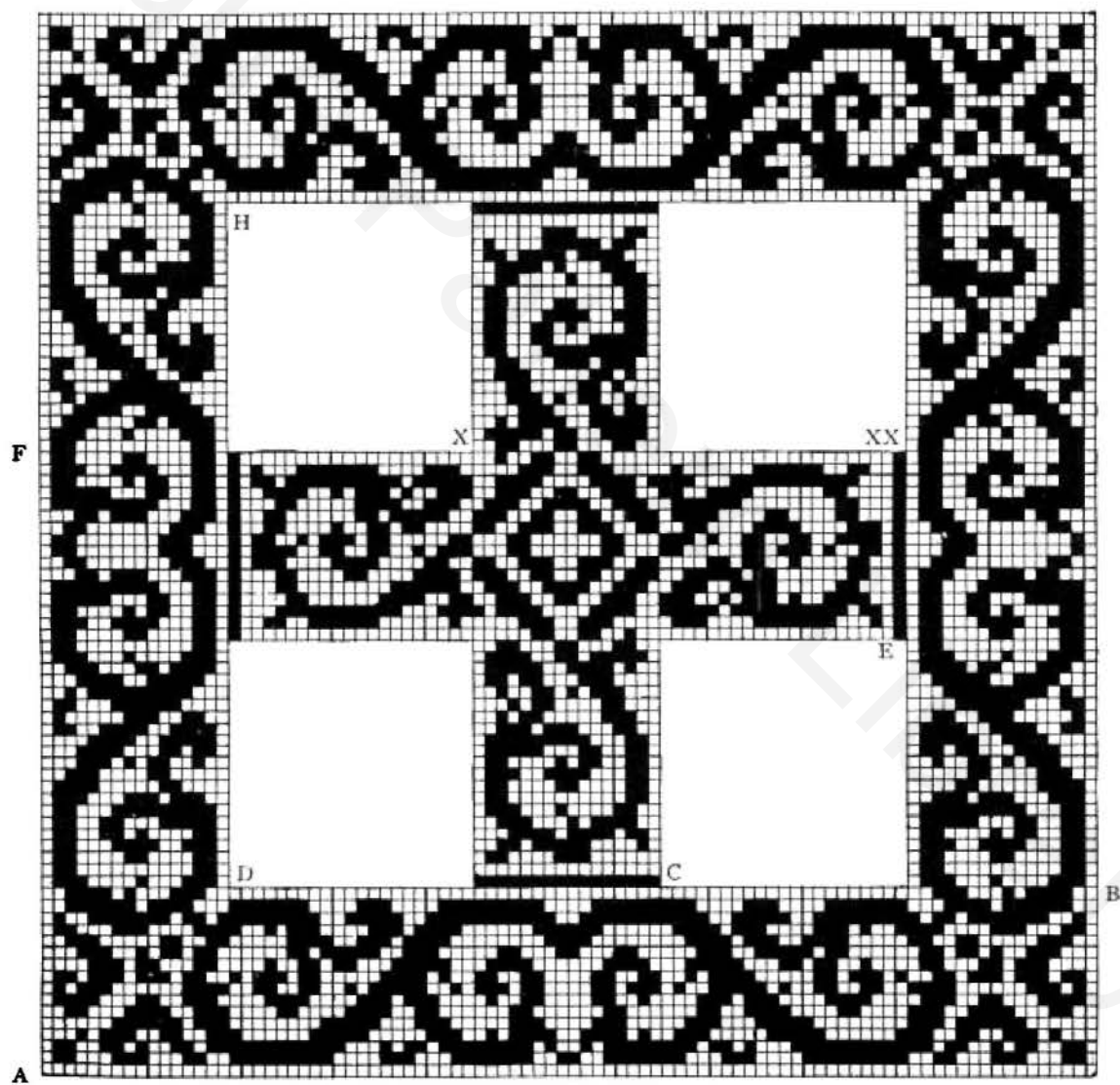


FIG. 23. CENTREPIECE DESIGN. See No. 1452, page 10

90 meshes

No. 1453. Peacock Pillow

One large insert of Filet Crochet, ninety-eight meshes square, forms the centre of this very handsome pillow.

The material of the pillow is Hardanger cloth, which lends itself so nicely to cross stitch. The border or frame surrounding the crochet being of that old, lately revived, much prized style of work. This is so fine and so well worked that it appears to be woven in the cloth. For the cross stitch design see Fig. 25 and Fig. 40. It is done with stranded cotton. The square of Filet Crochet, made of No. 100 D. M. C. Crochet Cotton, requires a foundation chain of 300, that includes 5 to

turn. Two rows of open meshes, then the design.

3d row — Fifty-two open, 1 solid, 45 open. Turn.

4th row — Forty open, 1 solid, 4 open, 2 solid, 4 open, 1 solid, 46 open. Turn.

5th row — Thirty-one open, 1 solid, 5 open, 1 solid, 8 open, 2 solid, 3 open, 2 solid, 3 open, 2 solid, 40 open, etc.

Both feet being started, the design (Fig. 24) can be easily followed. When the square is finished cover the edge with s c, 3 over each chain. Overcast it to the cloth, a generous seam of which is machine-stitched, overcast, and turned back. B, Fig. 25, is the centre of the cross stitch design.



No. 1453. PILLOW IN FILET CROCHET AND CROSS STITCH EMBROIDERY
See Figs. 24, 25 and 40

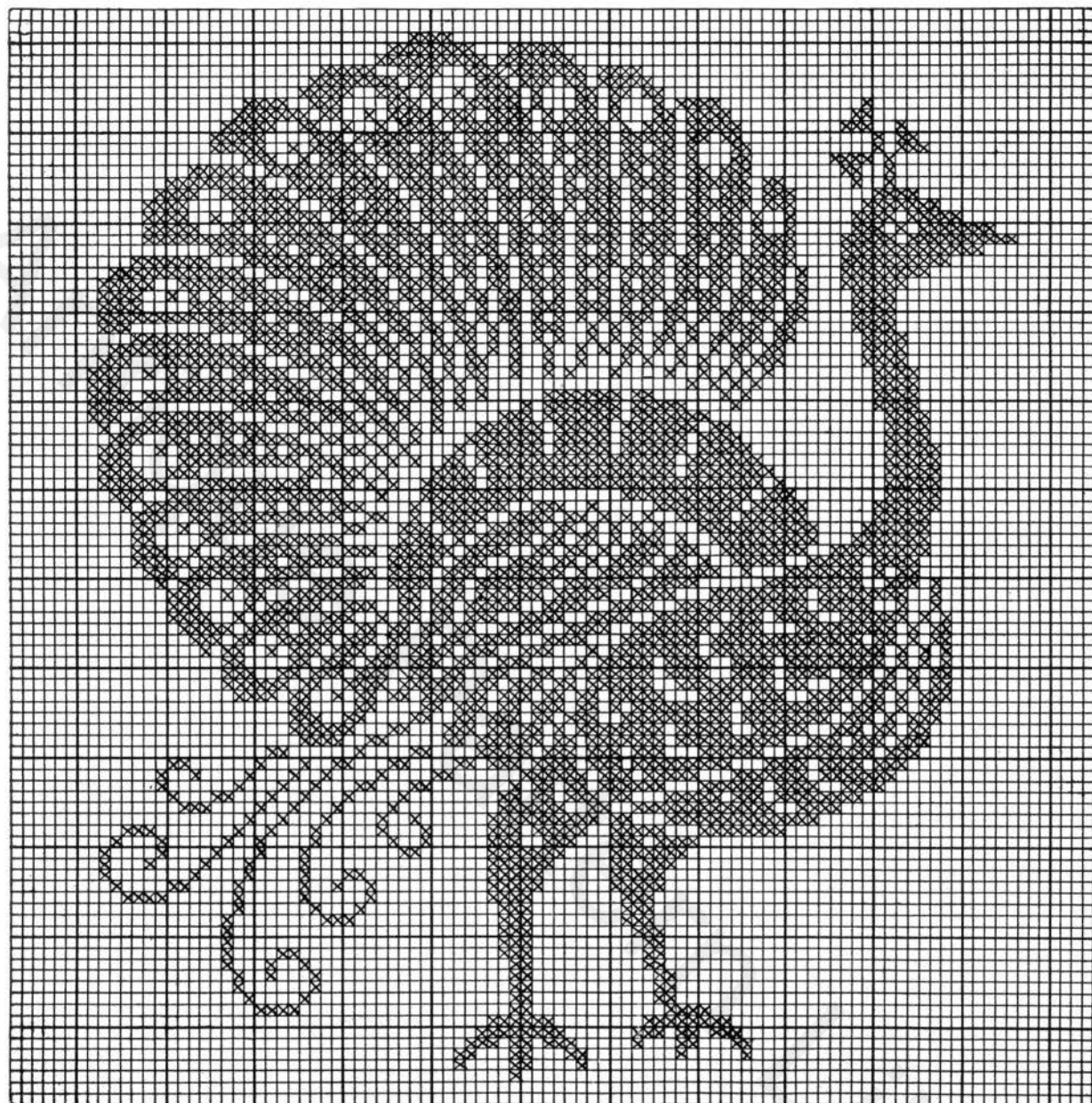


FIG. 24. DESIGN OF FILET CROCHET FOR PILLOW No. 1453.

98 meshes

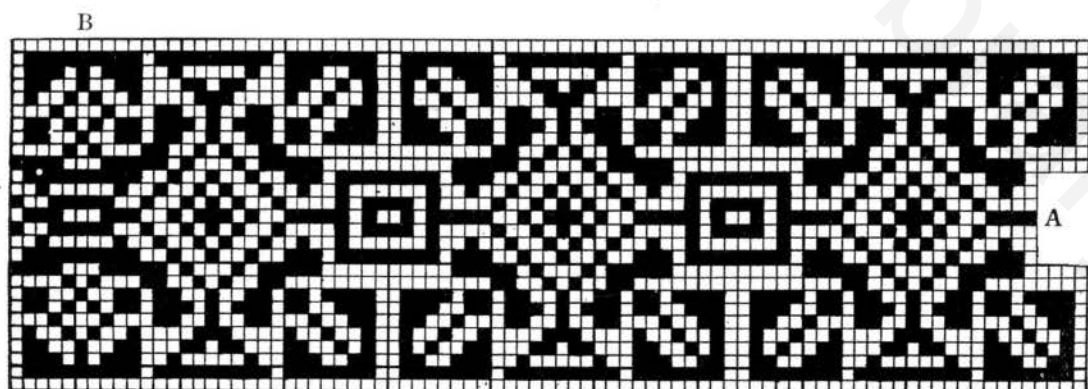


FIG. 25. BORDER DESIGN OF PILLOW No. 1453. See corner, Fig. 40

27 meshes

No. 1454. Luncheon Cloth

The combination of a corner of Filet Crochet with Venetian cut-work makes a very pretty result in this luncheon cloth.

The corner is crocheted of No. 100 D. M. C. Crochet Cotton; one ball will make a corner. The design is Fig. 27, page 15. In this triangle, the principle, seen at Fig. 4, Working Model, page 4, is used.

One hundred and two meshes is the size, requiring a foundation chain of 312, including turn. Make 101 open meshes, one triangular mesh with treble (two loops over the needle). In turning at the diagonal make 3 loose or 4 tight chain-stitches, and join with a d c—17 open, 1 solid, 23 open, 1 solid,

36 open, 6 solid, 7 open, 3 solid, 6 open. Turn with 5 chain, etc., following the design. Where the long meshes are shown, in the heart of the flower, make 5 chain (see Fig. 7, Working Model, page 5). Where so long a bias is to be cut in the linen, it is best to mark outside the insert and machine-stitch 1-32 of an inch outside that line. A running line, the same distance outside the stitching, will give a good body for the buttonhole, to which the insert is to be overcast. The cloth is 48 inches square, the hemstitched hem $1\frac{1}{4}$ inches wide, and it requires one-half dozen D. M. C. Coton Floche No. 8 to do the embroidery. The Venetian cut-work scrolls are very easily and quickly made.



No. 1454 LUNCHEON CLOTH IN FILET CROCHET AND VENETIAN CUT WORK

See page 15, Fig. 27

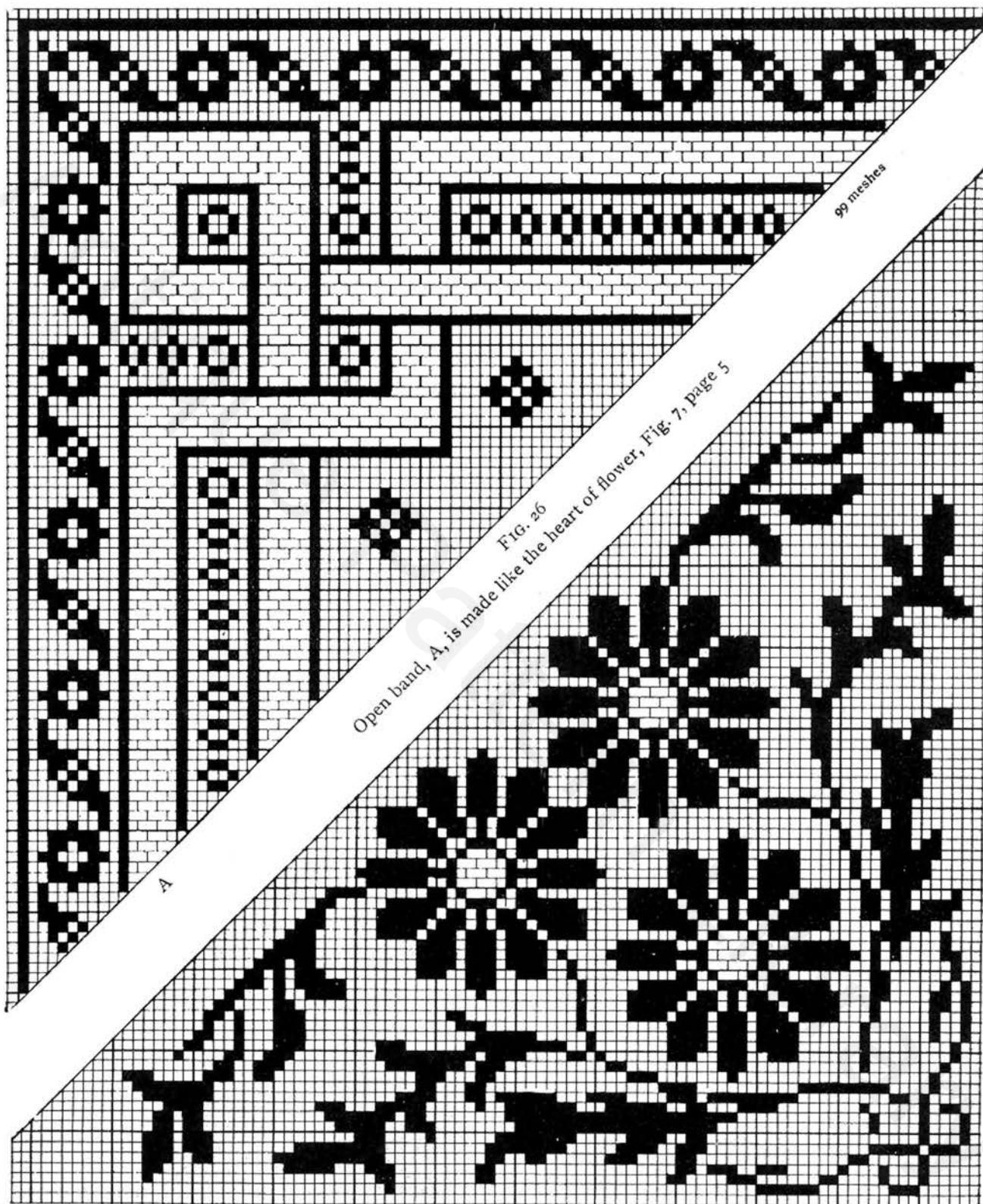


FIG. 27. DESIGN FOR LUNCHEON CLOTH, No. 1454, page 14. See Fig. 7, page 5

102 meshes

No. 1455. Pillow in Filet Crochet and Eyelet Work

This pillow of linen is beautifully embroidered, and inset with one large and eight small medallions of Filet Crochet.

The larger medallion is $5\frac{1}{2}$ inches square, 54 meshes. For design, see Fig. 28, page 17.

The smaller medallions are 3 inches square, 31 meshes. For designs, see Fig. 29 and Fig. 30, page 17.

One ball of D. M. C. Crochet Cotton, No. 100, will make the nine medallions.

The embroidery should be finished first and the linen laundered, after which the medallions (lau-

dered) are to be overcast to the buttonholed edge.

Lay the medallions in place, mark lightly (with a hard pencil) outside each one. Make one line of closely run stitches about $\frac{1}{32}$ of an inch outside the pencil mark, a second line the same distance outside the first. Buttonhole over these two lines with the edge of the buttonhole on the inner side. Cut close to the work and overcast the medallion in this little frame. The buttonhole should be done with the thread used in the embroidery. D. M. C. Coton Floche, No. 12, is good for that, or any other embroidery cotton that one prefers.



NO. 1455. PILLOW IN FILET CROCHET AND EYELET WORK. See page 17, Figs. 28, 29 and 30

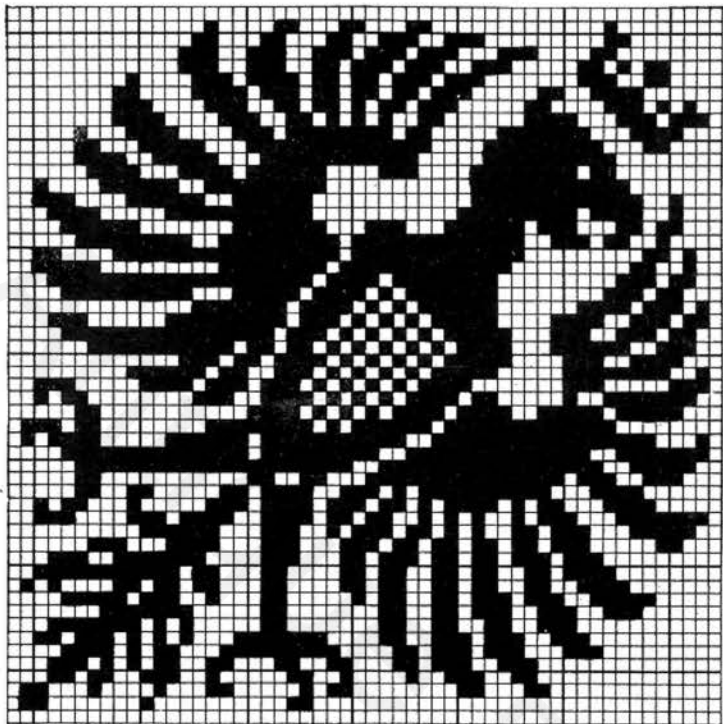


FIG. 28. See No. 1455, page 16

54 meshes

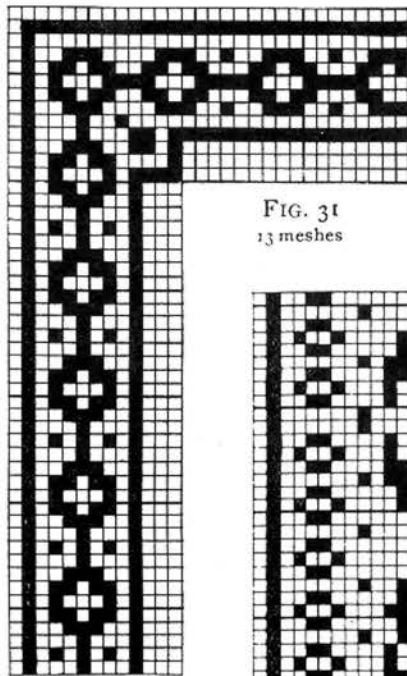


FIG. 31
13 meshes

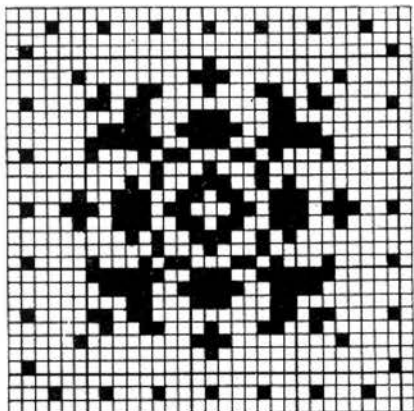
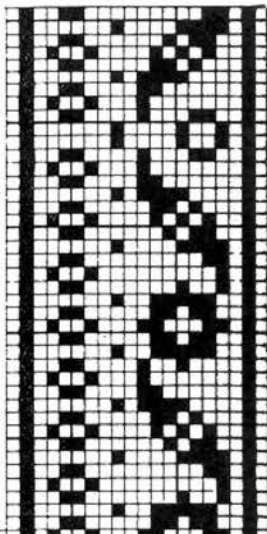


FIG. 29. See page 16

31 meshes

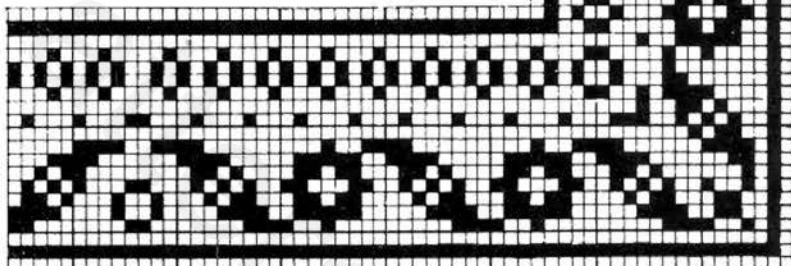


FIG. 32. See Baby Pillow, No. 1451, page 9

20 meshes

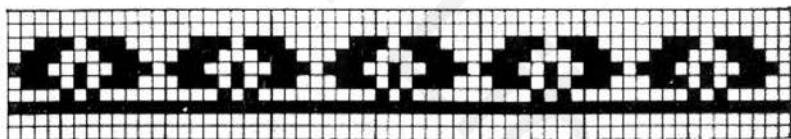


FIG. 33 See top of Bag, page 19

10 meshes

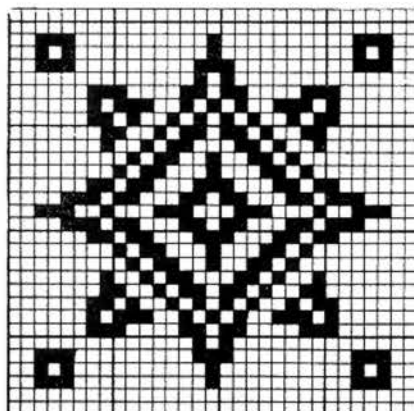


FIG. 30. See page 16

31 meshes

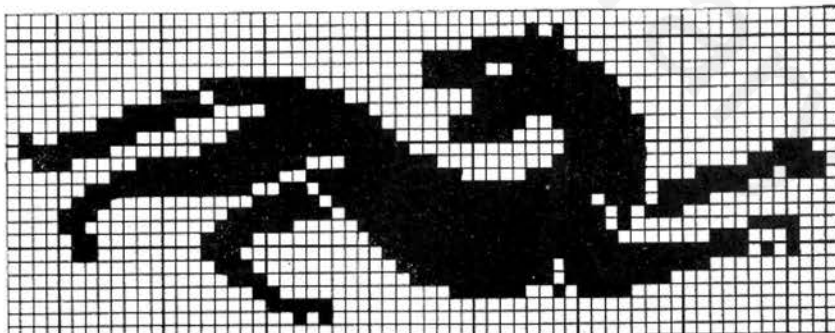


FIG. 34

25 x 64 meshes

Figs. 35, 36. Towel with Filet Crochet

This towel, or scarf, of 24-inch huckaback is trimmed at one end with three initialed medallions, 31 meshes square, connected by a band of 3 open meshes, the width of the towel.

The initials are 25 meshes high, from alphabet, Fig. 111, page 42.

An insertion, 13 meshes wide, with name (9 meshes high), repeated, forms the trimming of the other end; see page 6, Fig. 11.

One ball of No. 50 D. M. C. Crochet Cotton and 1¼ yards 24-inch huckaback are the materials.

Fig. 41. Baby's Bonnet

This charming bonnet was made of No. 100 D. M. C. Crochet Cotton, with a No. 14 crochet needle. The directions are as follows:

Chain 6, join in a ring.

1st round—Twelve s c in the ring.

2d round—Two s c in each stitch (making 24).

3d round—* Two s c in 1st, 1 s c in each of next 2 *. Repeat from * to * (making 32).

4th round—* Two s c in 1st, 1 s c in 2d *. Repeat from * to * (making 48).

5th round—* Two s c in 1st, 1 s c in 2d *. Repeat from * to * (making 72).

6th round—Five chain, 1 d c in 2d stitch below, * 2 chain, 1 d c in 2d stitch below *. Repeat from * to * (making 36 open meshes).

7th round—One solid mesh (made by 3 chain, 3 d c), 2 open meshes. Repeat all around.

8th round—One open, 1 solid, * 2 open, 1 solid, *. Repeat from * to *.

9th round—One d c over each d c, 3 d c over each chain.

10th, 11th, 12th, 13th, 14th, 15th, 16th, 17th, 18th, rounds—Like 7th, 8th, and 9th.

19th, 20th, 21st rounds—Open meshes all around. This completes the crown.

22d row—Turn, with 5 chain, make 19 open, 1 solid, 5 open, 1 solid, 15 open, 1 solid, 5 open, 1 solid, 15 open, 1 solid, 5 open, 1 solid, 7 open (making 99 meshes).

23d row—Turn, make 7 open, 2 solid, 3 open, 2 solid, 15 open, 2 solid, 3 open, 2 solid, 15 open, 2 solid, 3 open, 2 solid, 19 open.

24th row—Turn, and since two points of each

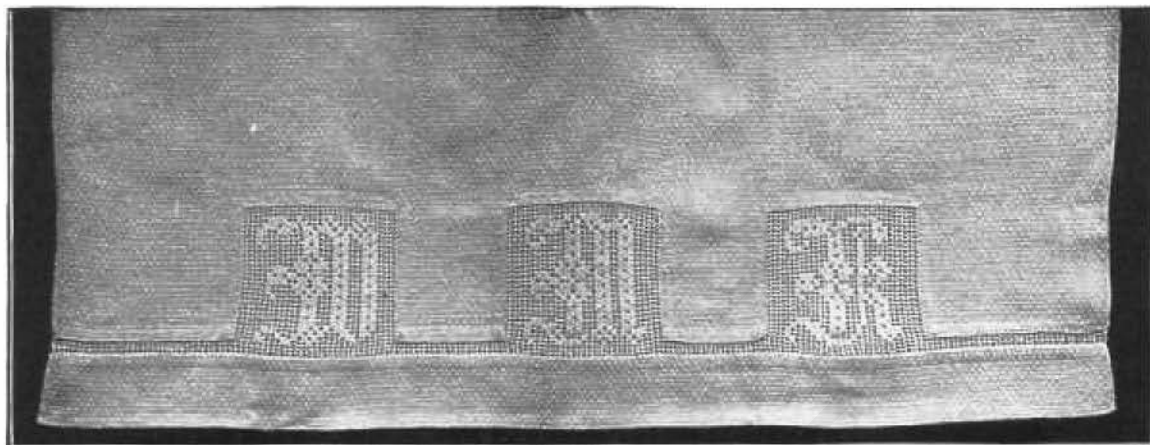


FIG. 35. TOWEL. See Alphabet, page 42, Fig. 111

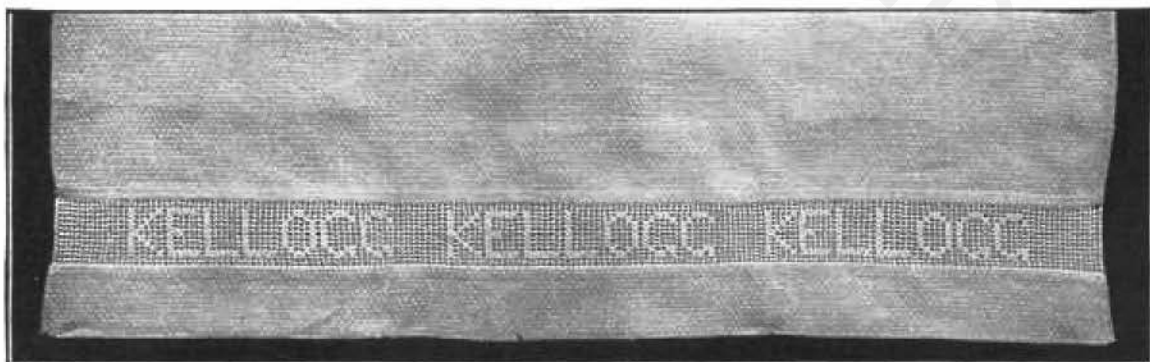


FIG. 36. TOWEL. See Alphabet, page 6, Fig. 11

of four stars are started, they may easily be finished from the illustration, being sure to start the front row of alternating stars in the 36th row, the same row that finishes the first four stars. The 36th row follows — Turn, make 8 open meshes, 1 solid, 5 open, 1 solid, 4 open, 1 solid, 5 open, 1 solid, 4 open, 1 solid, 5 open, 1 solid, 4 open, 1 solid, 5 open, 1 solid, 4 open, 1 solid, 5 open, 1 solid, 4 open, 1 solid, 5 open, 1 solid, 4 open, 1 solid, 5 open, 1 solid, 7 open.

Finish around the edge with 3 s c over each chain, making a picot of 4 chain after every 6th stitch.

Fig. 42. Hand Bag

This little bag measures 5 inches by 6½ inches, and is made of No. 50 D. M. C. Crochet Cotton. The design used was Fig. 73 for the body and Fig. 33 for the top of 8 rows above the beading.

Each side was crocheted separately, and the edges were held together and covered with s c. Figure 73 is 43 meshes, one more was added to each side, and the size could be varied at one's pleasure. Make 45 meshes, 141 chain, d c in 9th stitch from needle, etc.

The beading is made of double trebles (3 loops) separated by 2 chain. Around the top it is finished with 6 s c, picot of 5, repeated. The cords are chains of No. 2 D. M. C. Crochet Cotton, 30 inches long, about 300 stitches. And balls of No. 2 are crocheted on the ends.

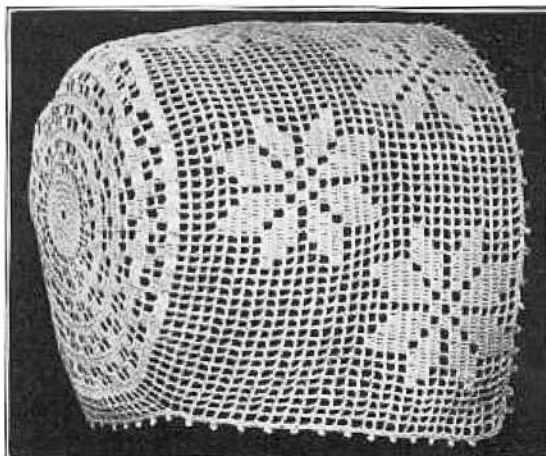


FIG. 41. BABY'S BONNET
See page 18

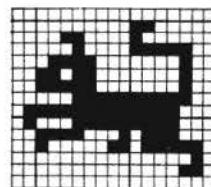


FIG. 37
15 x 17 meshes



FIG. 37½ 7 meshes

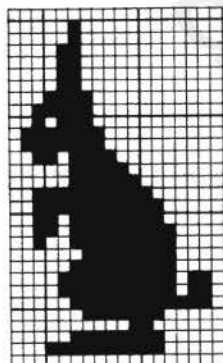


FIG. 38. 18 x 30 meshes

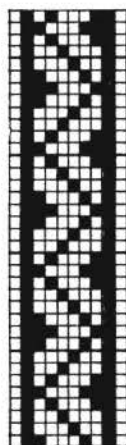


FIG. 39
10 meshes

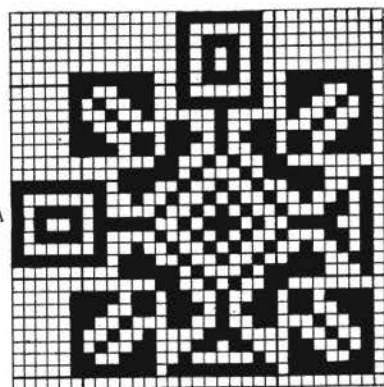


FIG. 40 27 meshes
Corner of Fig. 25



FIG. 42. SMALL HAND BAG
See Figs. 33 and 73

No. 1456. Bedspread in Filet Crochet

Use 8½ lbs. of carpet chain and a steel hook to suit the thread. One-quarter of the spread is given, half the width and half the length, in the pattern, No. 1456, offered at 10 cents. Begin the work in the lower right-hand corner with a chain of 784, and 5 to turn, to make 261 meshes. The pattern has 259 meshes, but one more on each side must be allowed to make a perfect copy of the

spread. Two rows of open meshes are made before the design is started. Follow the first row of the design to the centre mesh, which is the last in the pattern. Reverse this half row, but do not double the centre mesh, and this will complete the 3d row of work. Begin the 4th row at the right and work to the centre, then reverse for the last half of the row. Make each row in this way.



No. 1456. BEDSPREAD IN FILET CROCHET

No. 1457. Bedspread in Filet Crochet and Relief Crochet

Fourteen pounds of white carpet chain and a steel crochet needle are required to make this very handsome bedspread.

The width is 243 meshes, which takes 729 chain and 5 to turn. Part of the design is in Relief Crochet.

The Relief block is represented by a dot in the pattern, No. 1457, which is offered by the Priscilla

Publishing Co., for 10 cents. This block or knob is made of 5 d c worked in the space of one mesh, the needle is taken out and put in the first of the five, and the last loop taken through, make 1 chain and 1 d c over d c.

Bend the 5 d c either toward or away from you, according to which side, the right or wrong side, is uppermost. The raised work is very effective.



No. 1457. BEDSPREAD IN FILET CROCHET AND RELIEF CROCHET



FIG. 43. See Flower Doily, page 6, Fig. 10

72 meshes

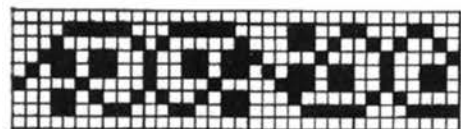


FIG. 45A

9 meshes

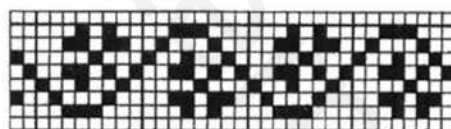


FIG. 45B

9 meshes



FIG. 46

12 x 23 meshes

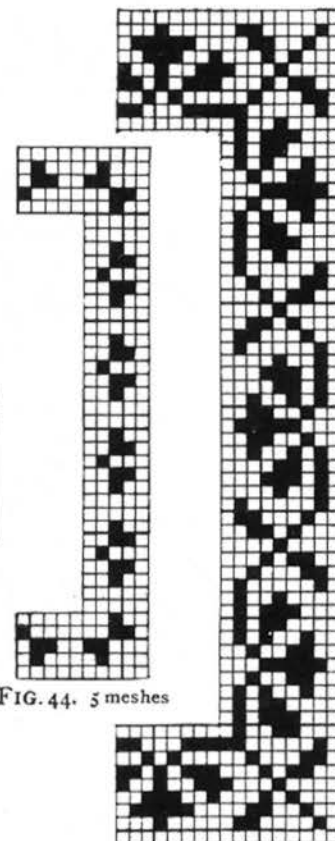


FIG. 44. 5 meshes

FIG. 45

9 meshes

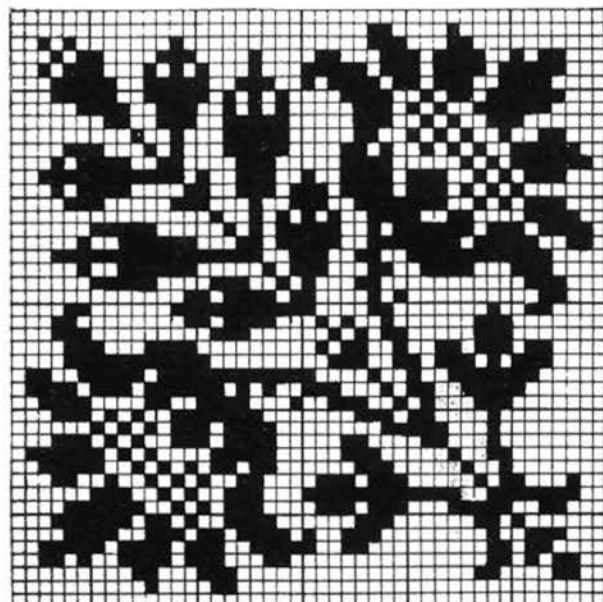


FIG. 47

45 meshes

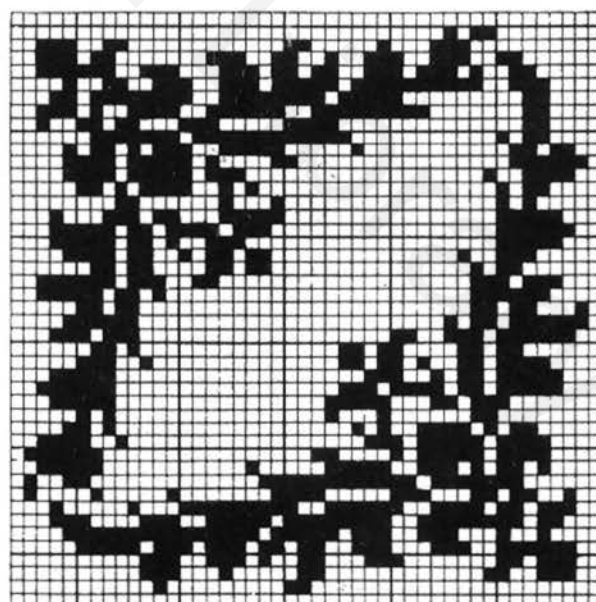


FIG. 48

45 meshes

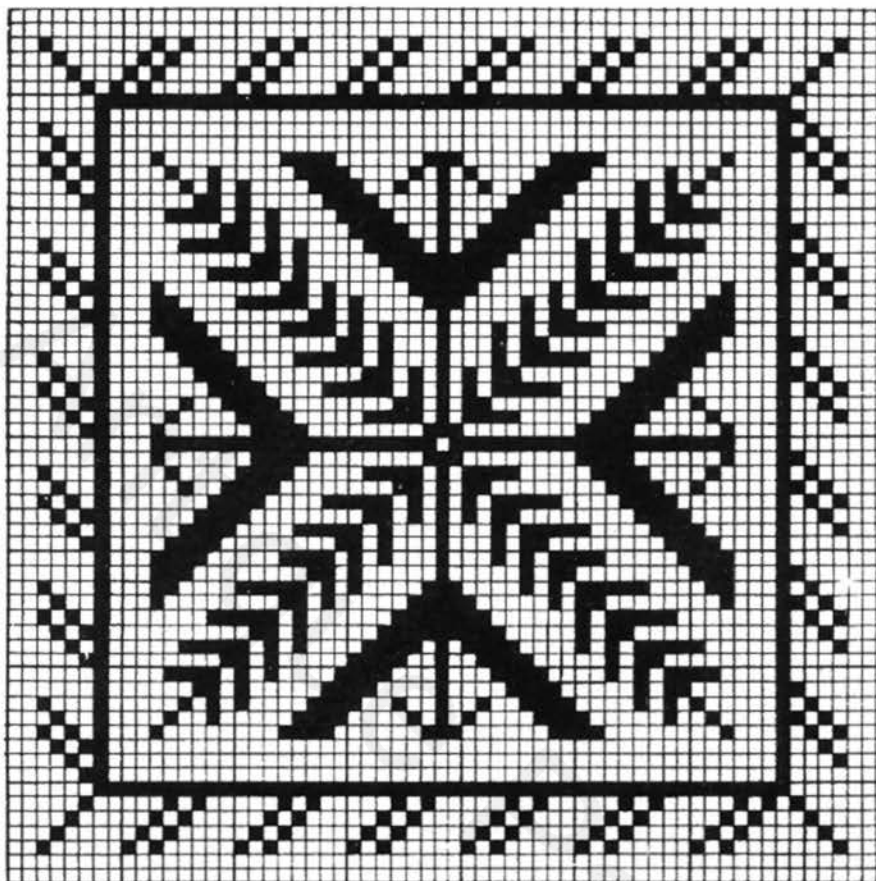


FIG. 49

61 meshes

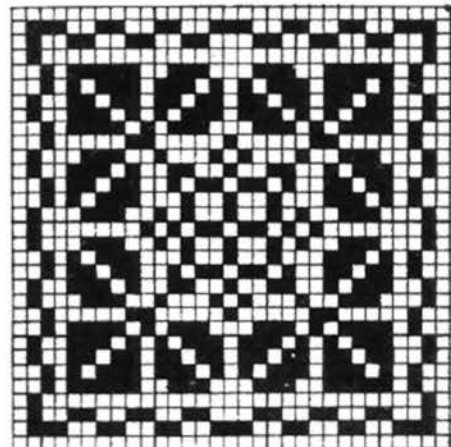


FIG. 51

31 meshes

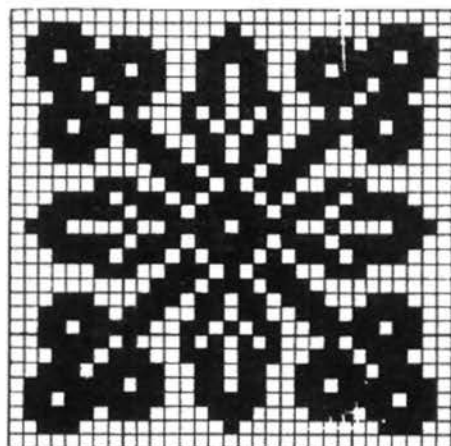


FIG. 52

31 meshes

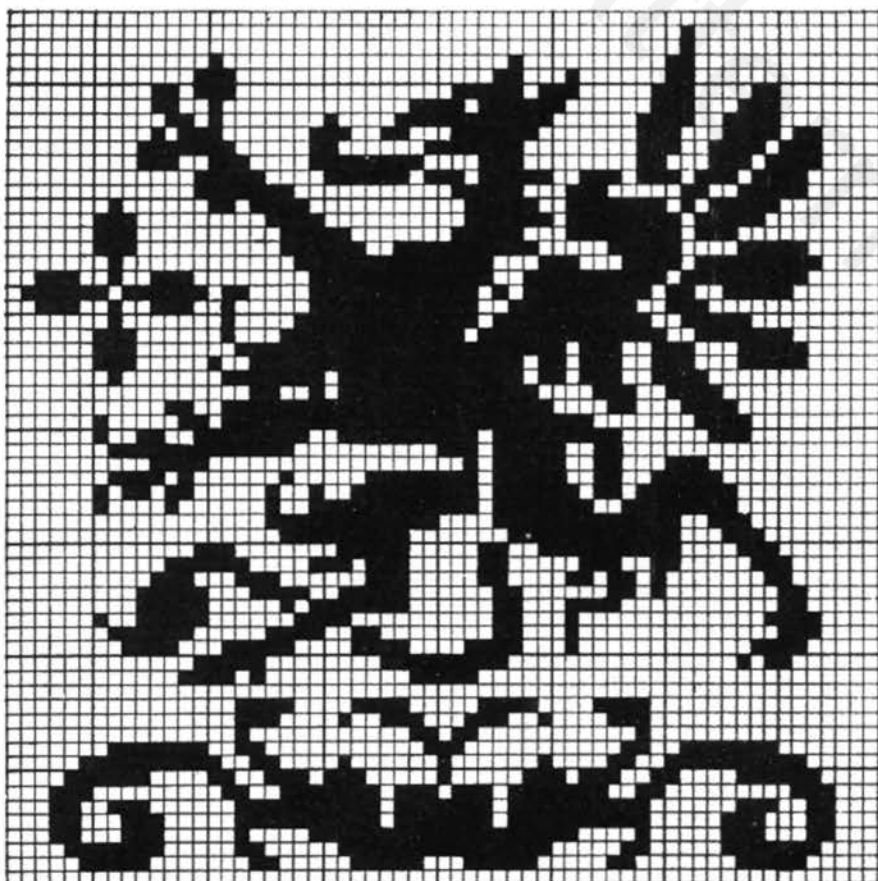


FIG. 50

61 meshes

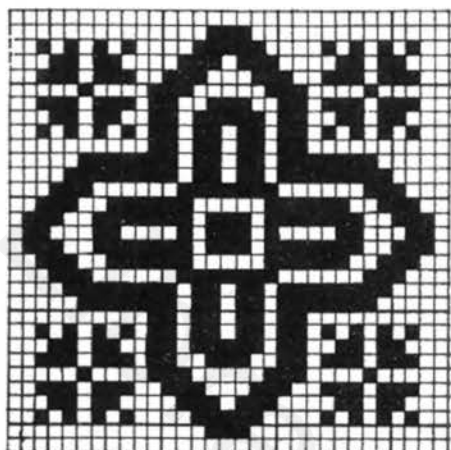


FIG. 53

31 meshes

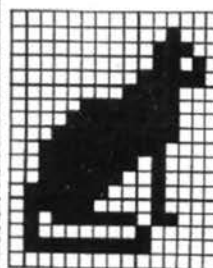


FIG. 54
15 x 18 meshes

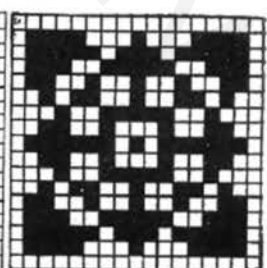


FIG. 55
17 meshes

A



C

FIG. 56. BOAR HUNT
116 x 198 meshes. See page 29 for patterns of Border for this
is one-half of Top Border. Fig. 62, C, D, F, is one
Border. Fig. 61, B, D, is Side Border.

A



C

FIG. 56. BOAR HUNT
 116 x 198 meshes. See page 29 for patterns of Border for this design. Fig. 60, A, B, E,
 is one-half of Top Border. Fig. 62, C, D, F, is one-half of Lower
 Border. Fig. 61, B, D, is Side Border.



FIG. 56. BOAR HUNT

Fig. 29 for patterns of Border for this design. Fig. 60, A, B, E, Top Border. Fig. 62, C, D, F, is one-half of Lower Border. Fig. 61, B, D, is Side Border.

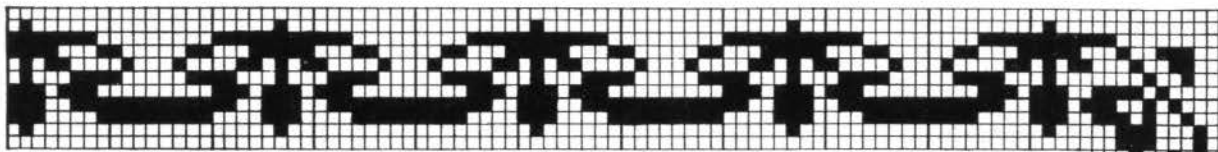


FIG. 57

11 meshes



X



FIG. 58

DEER HUNT

XX
104 x 186 meshes



For Border see page 24 and page 29.

104 x 186 meshes

DEER HUNT

FIG. 58

Fig. 58. Deer Hunt

The "Deer Hunt," Fig. 58, is completed by joining pages 26 and 27 at X and XX.

The border of the "Boar Hunt," on pages 24 and 25, may be applied to this, using only the narrow design, which is 4 meshes wide, and 2 meshes margin outside.

And there may be added to this the whole border on page 29, which is the right size for either design.

This border is given in three parts, the half of X

upper border, the half of lower border, and side border which fits exactly between the two.

They are lettered to join together.

The 6-mesh border should be placed directly outside the 104 by 186 meshes on this and the previous page, then the broader border just outside that, which is 116 by 198 meshes.

The measure outside the whole is 176 by 258 meshes. There should be no difficulty in adding either border to either design.



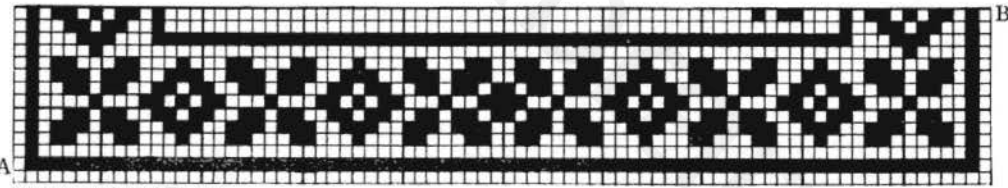
XX

FIG. 58. — Continued. For Border see page 24 and page 29.



FIG. 59. 78 x 144 meshes

The size of the page makes it necessary to give this design in two parts. When crocheting this panel of "Neptune," commence at A with a chain of 240 stitches, d c in 9th, etc. Make one row of open meshes, then follow the pattern. When B is reached continue at B of the larger design. The panel would be very pretty for use on a scarf end, or, if made of heavy thread, for a pillow.



First 14 meshes of Fig. 59

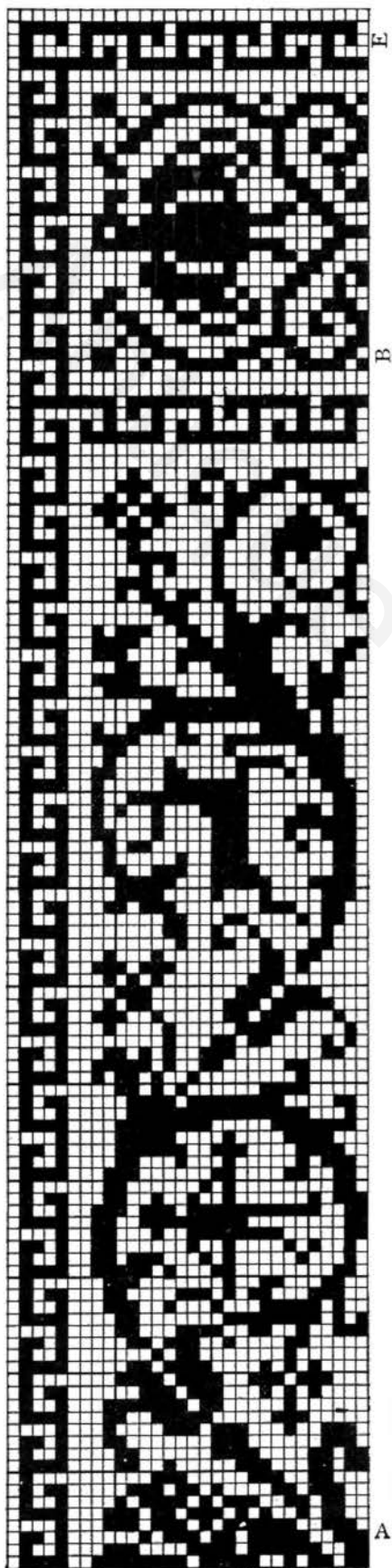


FIG. 60. 129 x 30 meshes
Half Top Border, Fig. 56

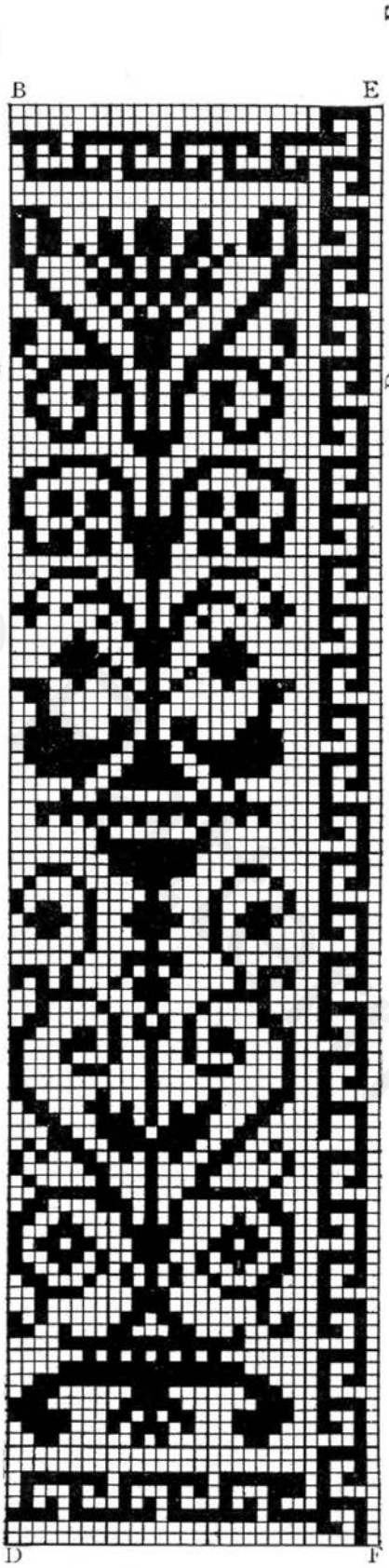


FIG. 61. 116 x 30 meshes
Side Border, Fig. 56

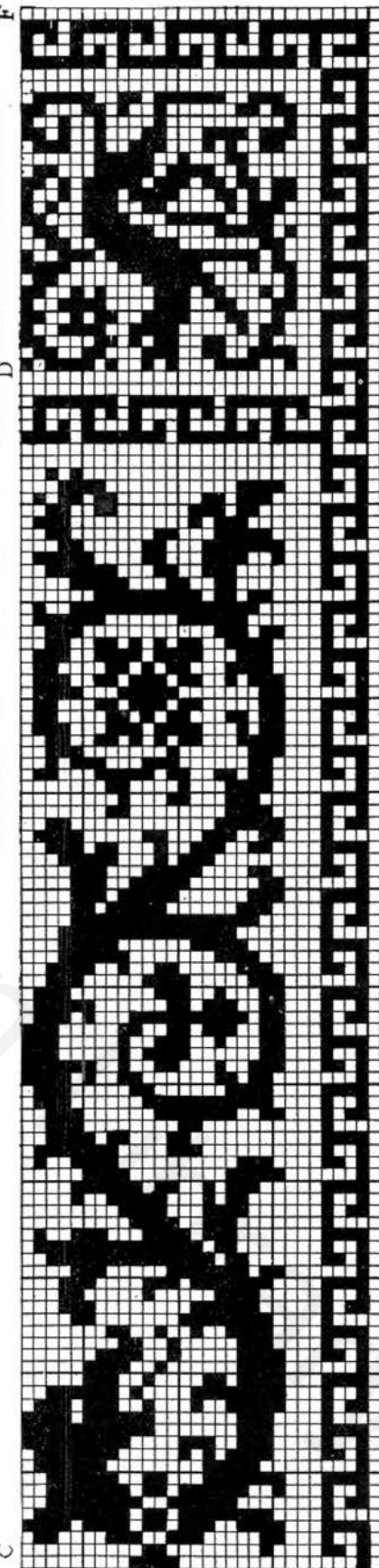


FIG. 62. 129 x 30 meshes
Half Lower Border, Fig. 56



FIG. 63

99 x 133 meshes

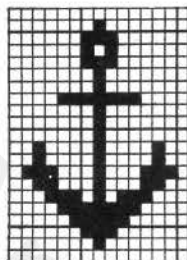


FIG. 64
15 x 21 meshes

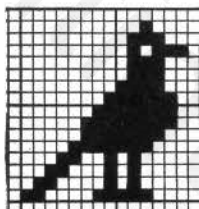


FIG. 65
16 x 17 meshes

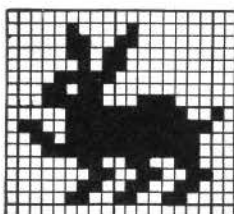


FIG. 66
16 x 19 meshes



FIG. 67

68 meshes

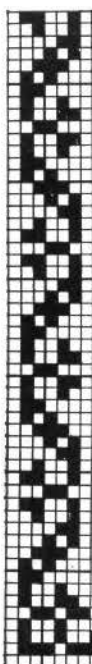


FIG. 70

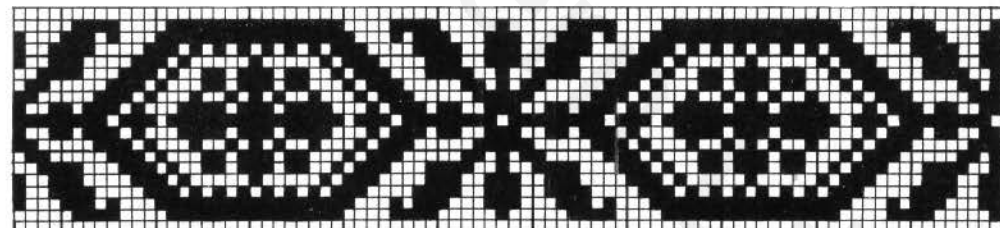


FIG. 68

19 meshes

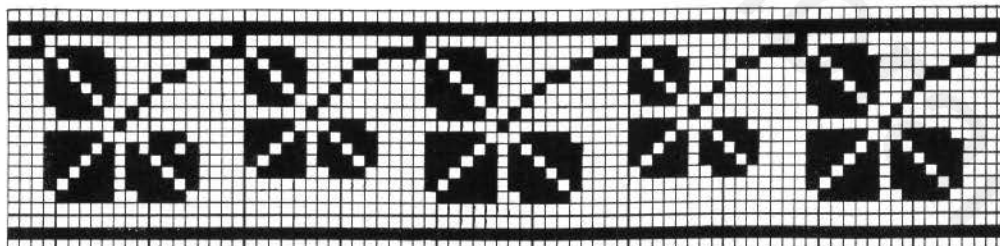


FIG. 69

20 meshes

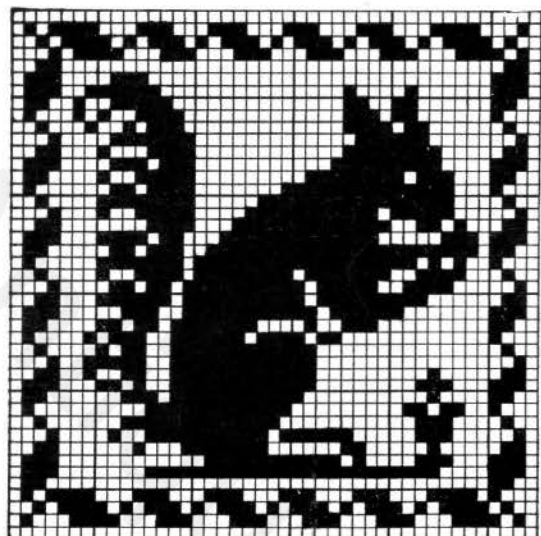


FIG. 71

43 meshes

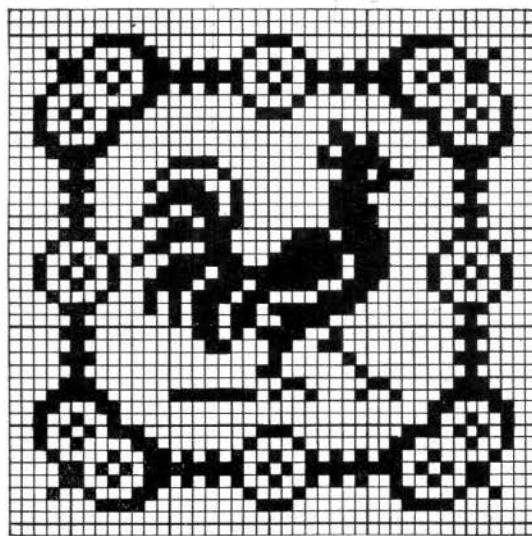


FIG. 72

43 meshes

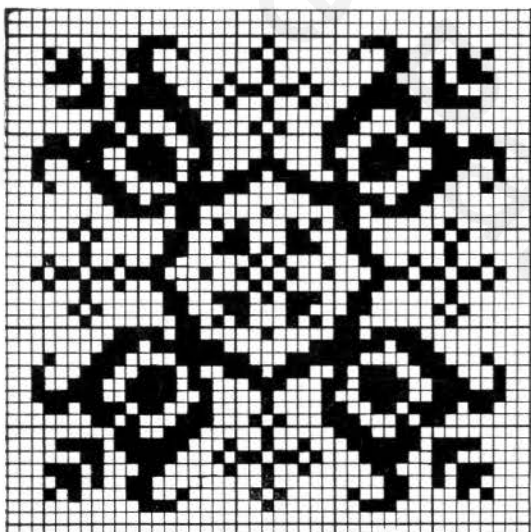


FIG. 73 See Fig. 42, page 19

43 meshes

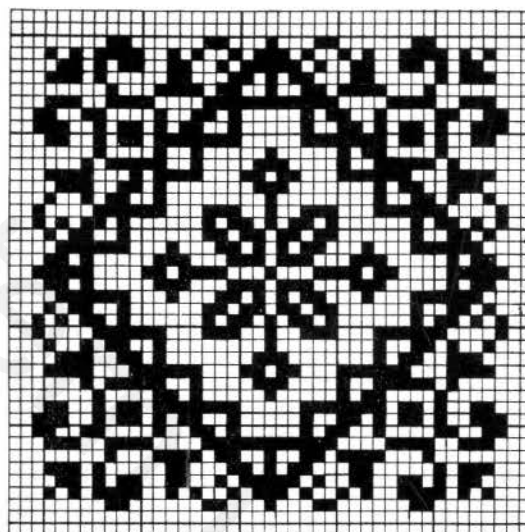


FIG. 74

43 meshes

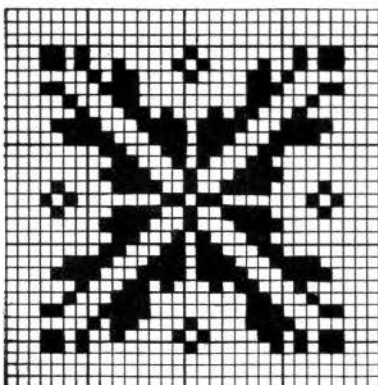


FIG. 75

31 meshes

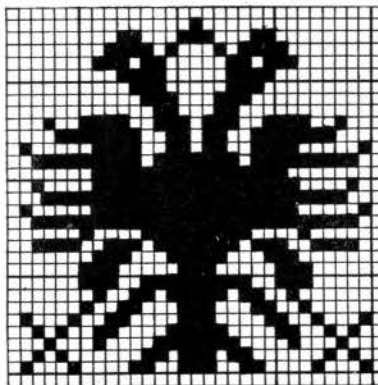


FIG. 76

31 meshes

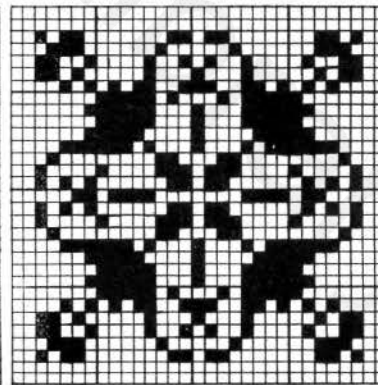


FIG. 77

31 meshes

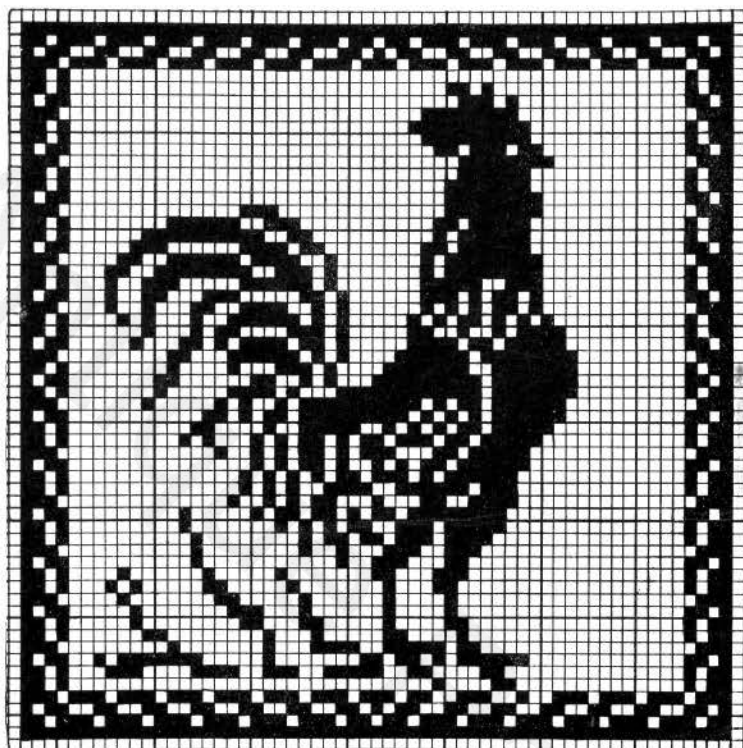


FIG. 78

61 meshes

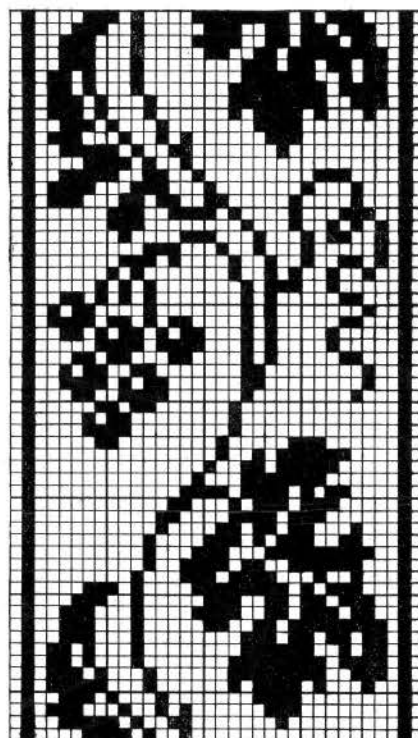


FIG. 79

34 meshes

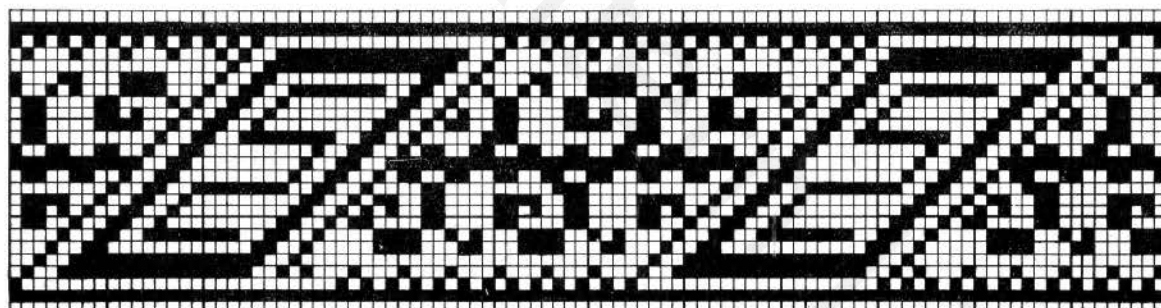


FIG. 80

25 meshes



FIG. 81

29 meshes

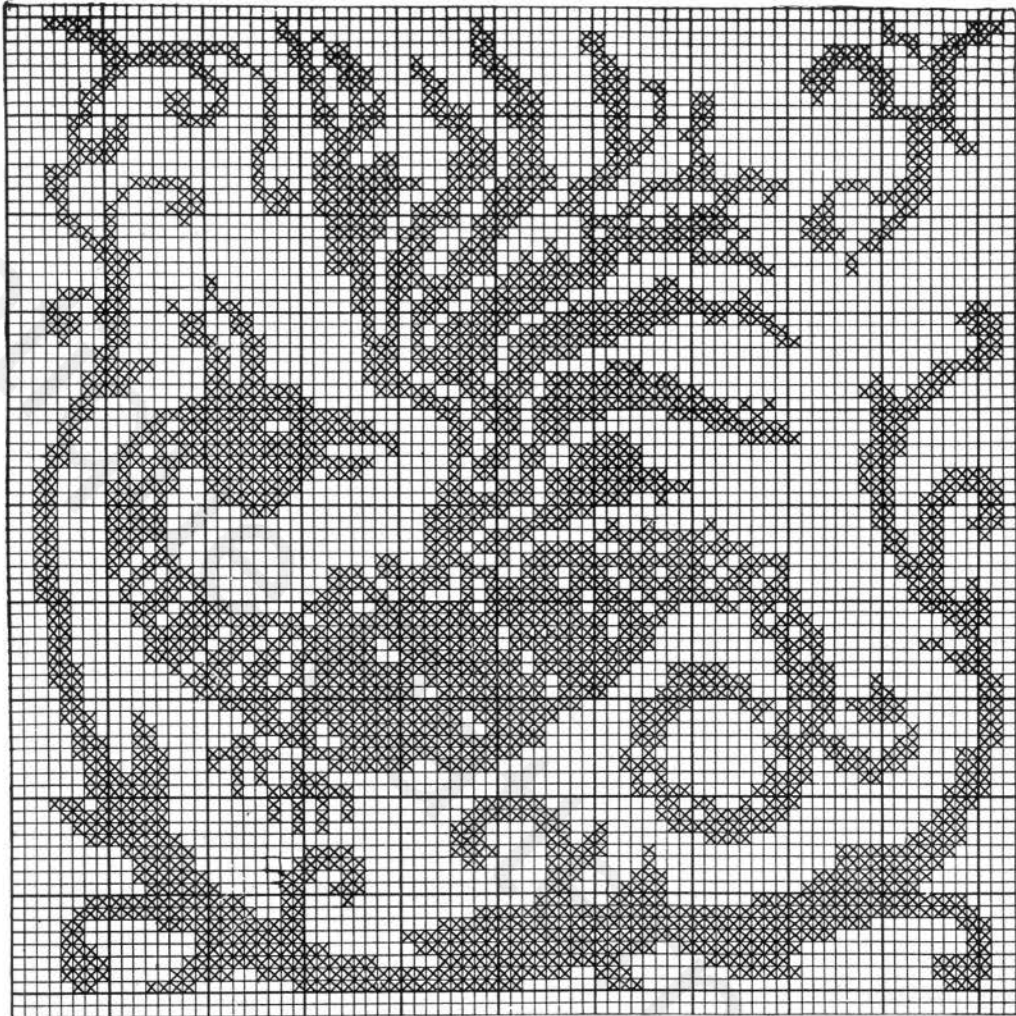


FIG. 82

83 meshes

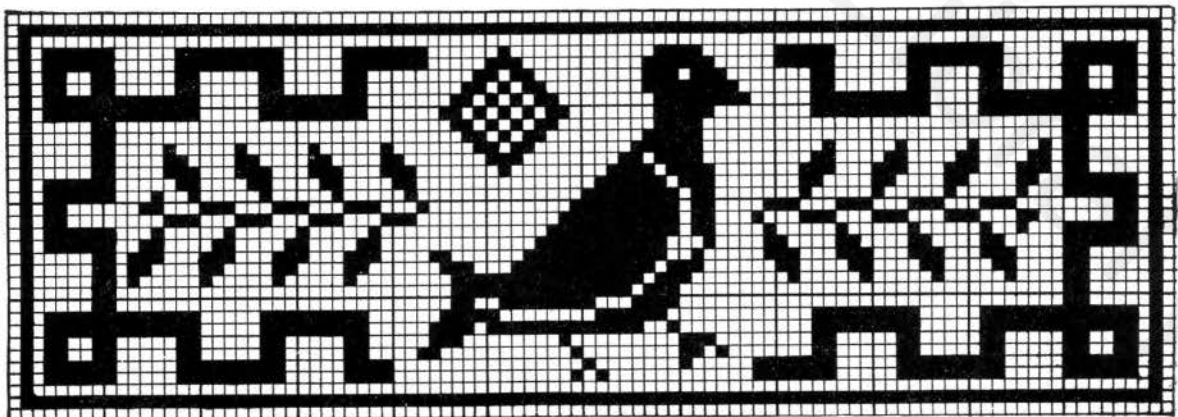


FIG. 83

34 x 103 meshes



FIG. 84

83 meshes

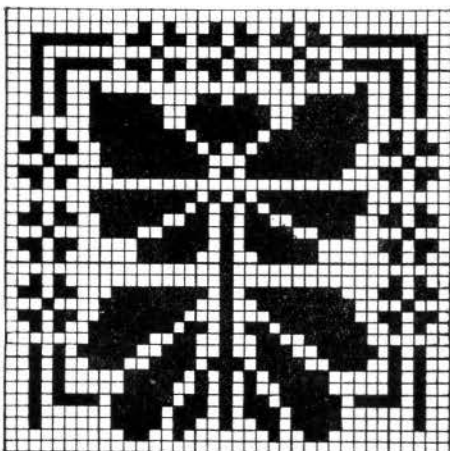


FIG. 85

37 meshes

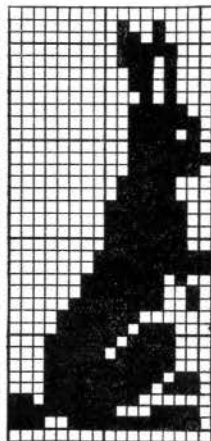


FIG. 86

19 x 36 meshes

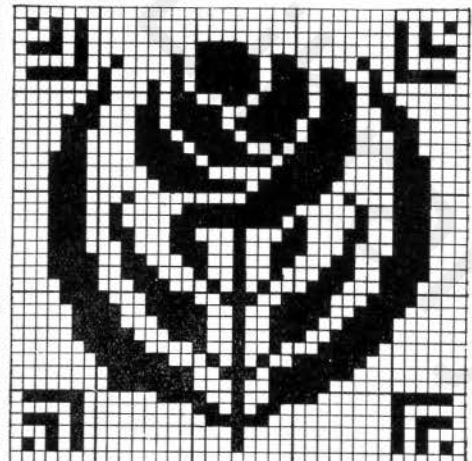


FIG. 87

37 meshes



FIG. 88

91 meshes

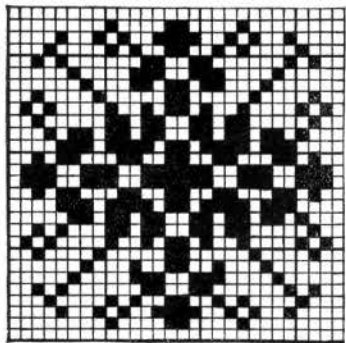


FIG. 89

28 meshes

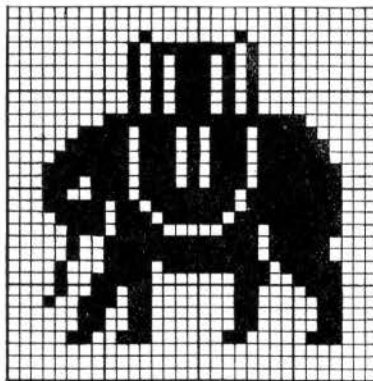


FIG. 90

31 meshes

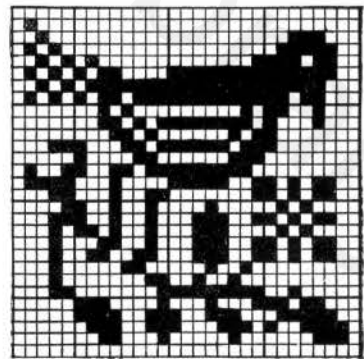


FIG. 91

29 meshes

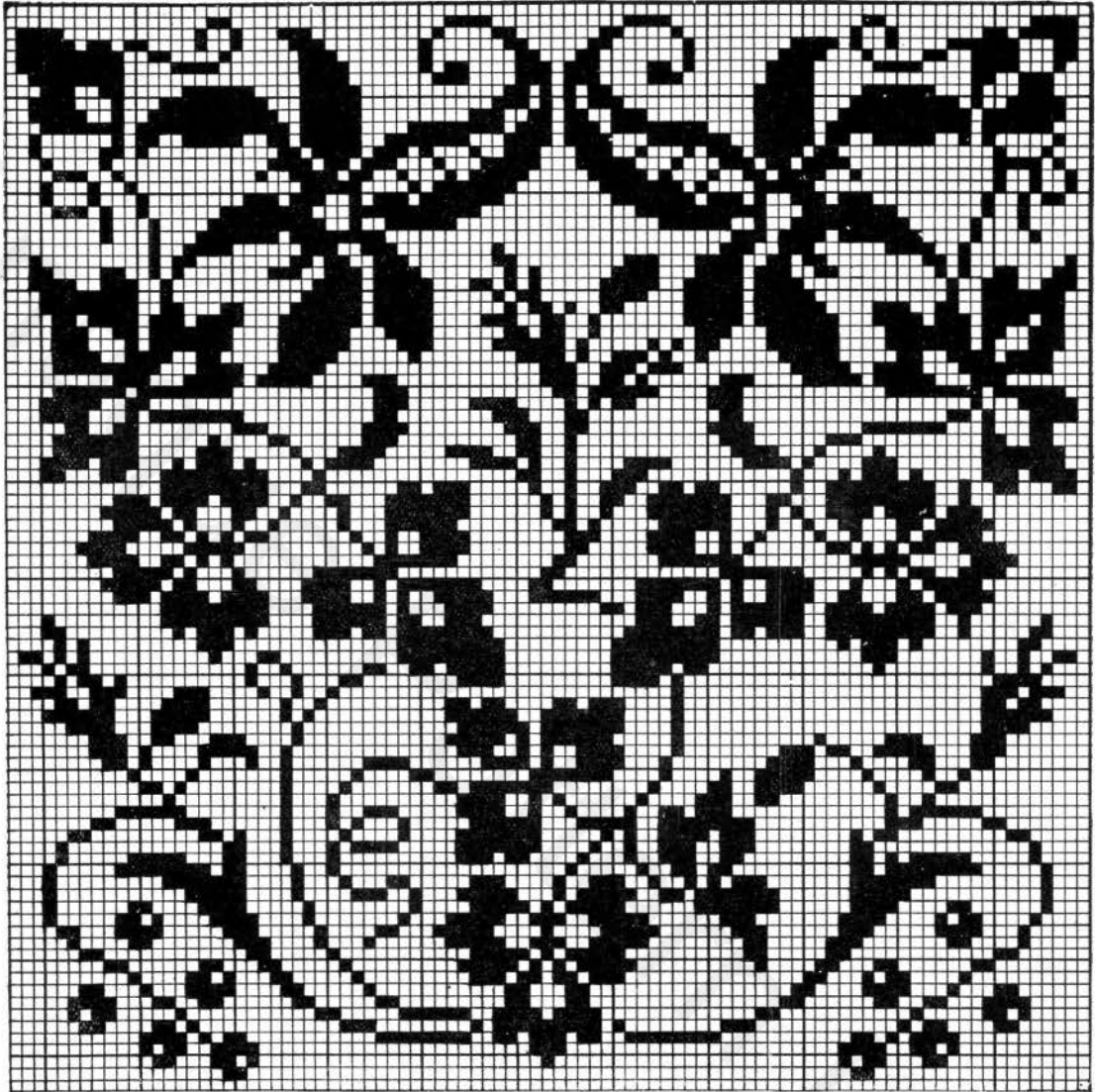


FIG. 92

91 meshes



FIG. 93. Y, see Fig. 113

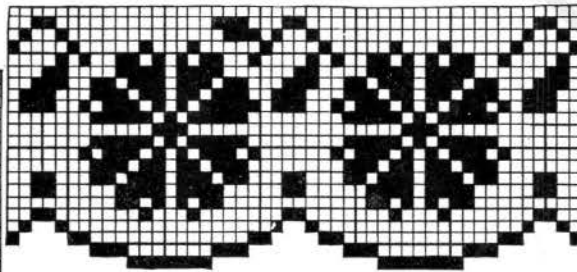


FIG. 94

22 meshes

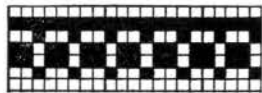


FIG. 96

7 meshes

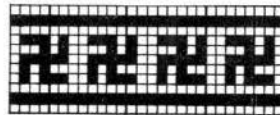


FIG. 97

11 meshes

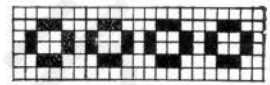


FIG. 95

6 meshes

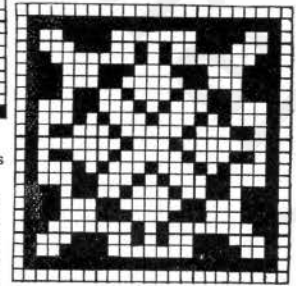


FIG. 98

23 meshes

See Fig. 22, page 8

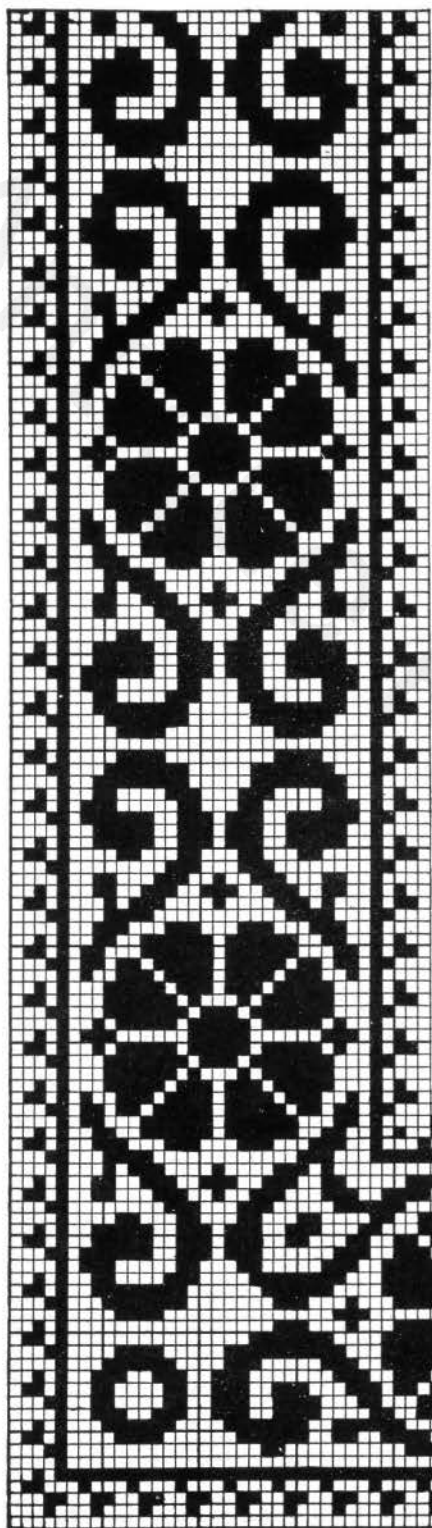


FIG. 99

35 meshes

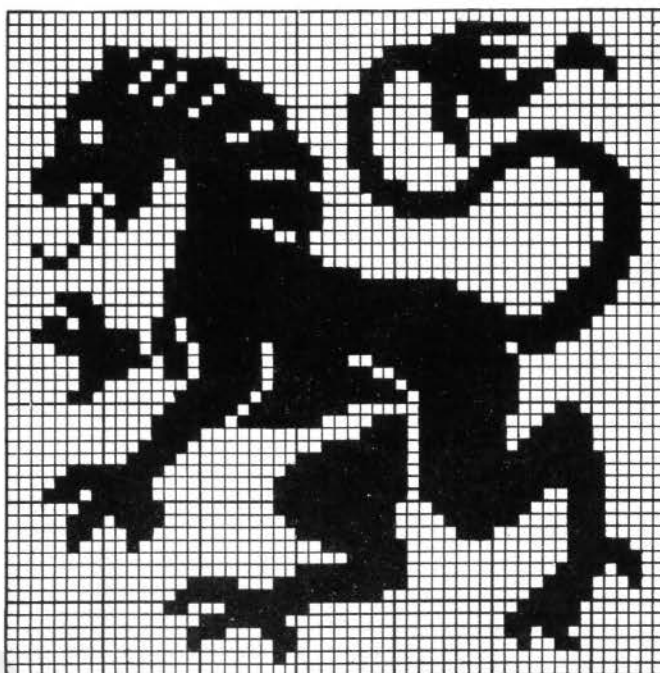


FIG. 100

54 meshes

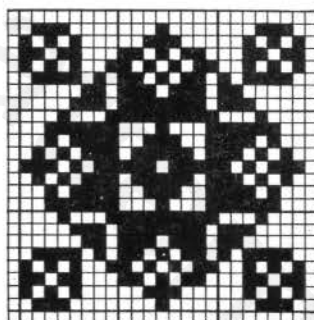


FIG. 101

25 meshes

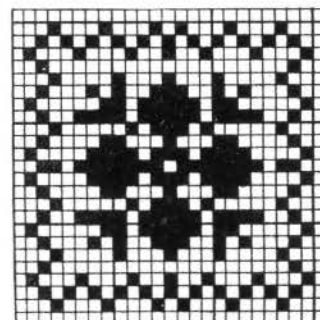


FIG. 102

25 meshes



FIG. 103

54 meshes



FIG. 104

25 meshes

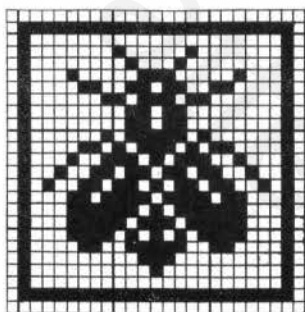


FIG. 105

25 meshes

See Fig. 22, page 8



FIG. 106

35 meshes



FIG. 107

95 meshes

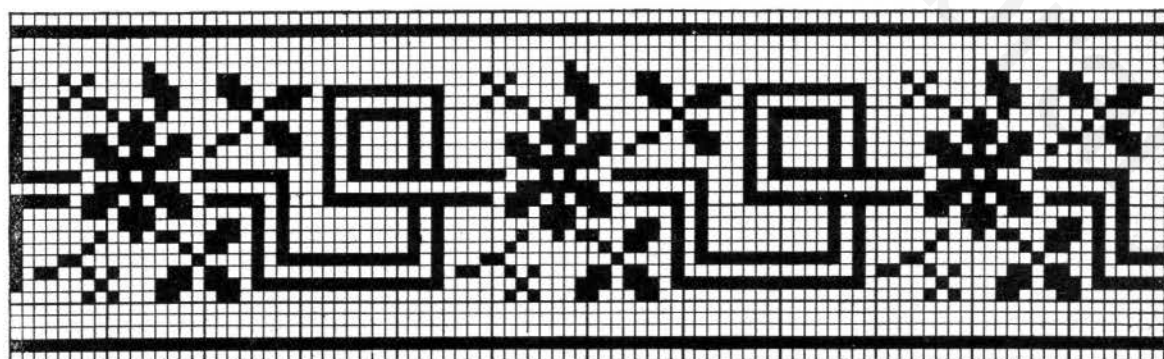


FIG. 108

29 meshes

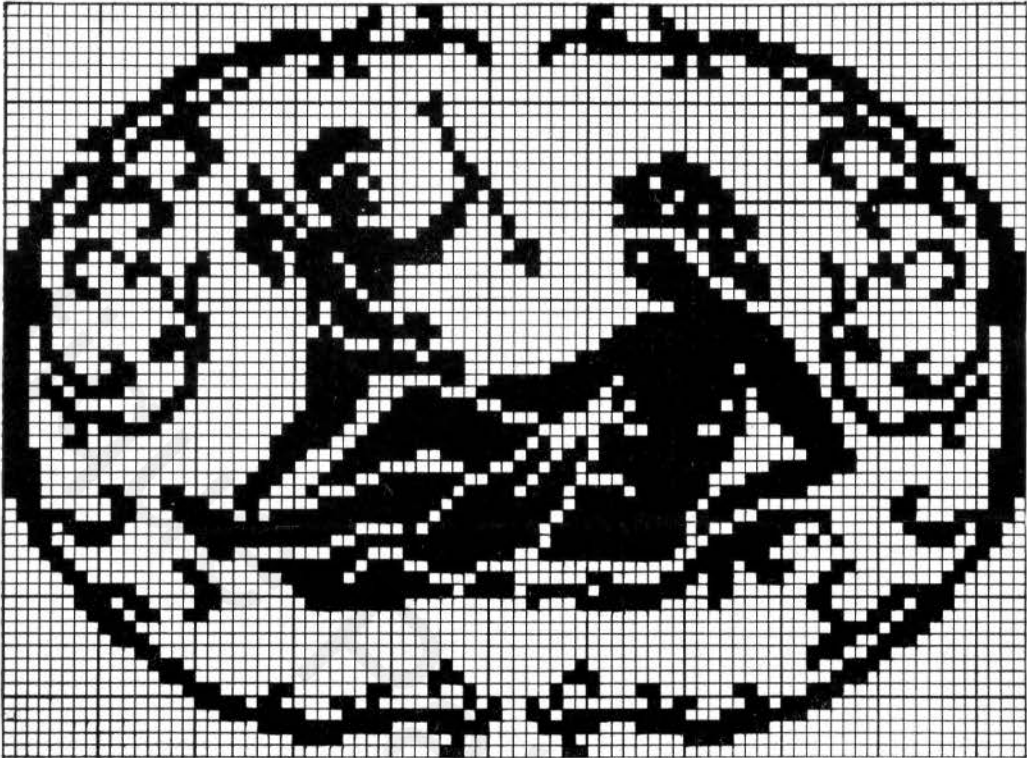


FIG. 109

61 x 84 meshes

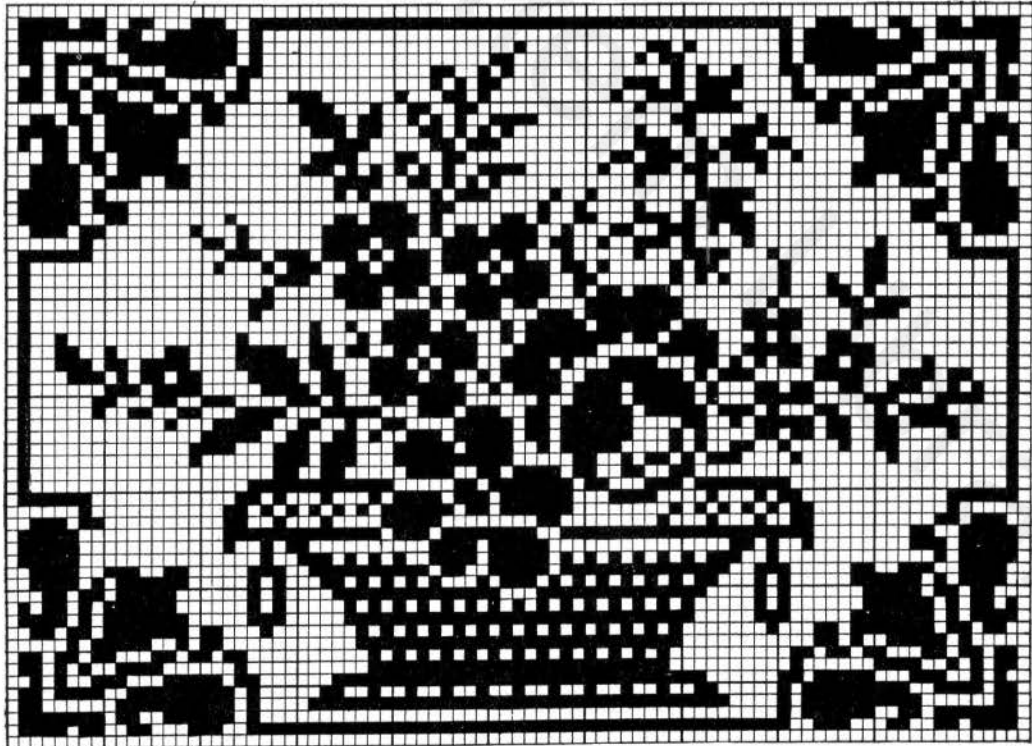


FIG. 110

61 x 85 meshes

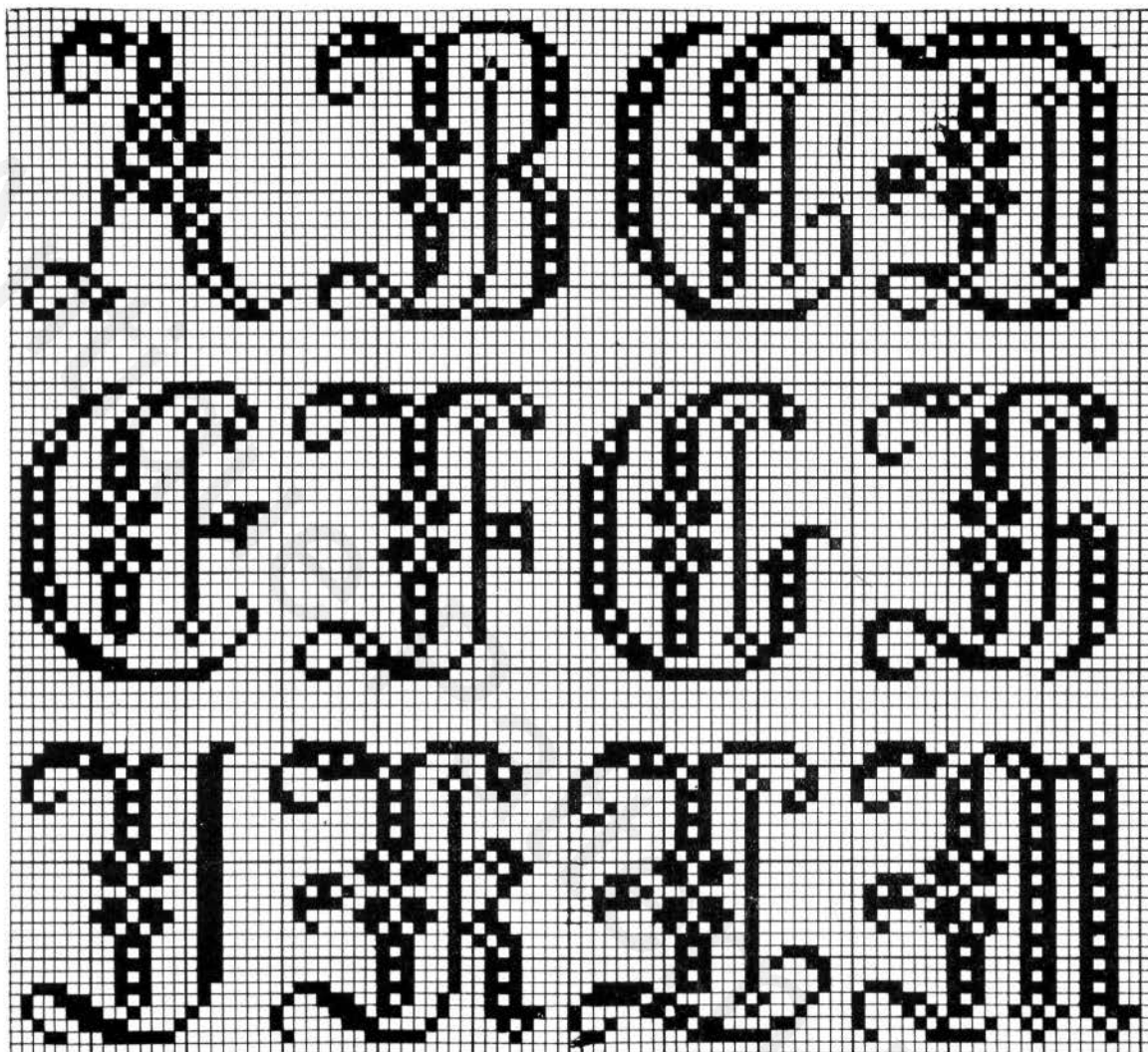


FIG. 111

25 meshes high

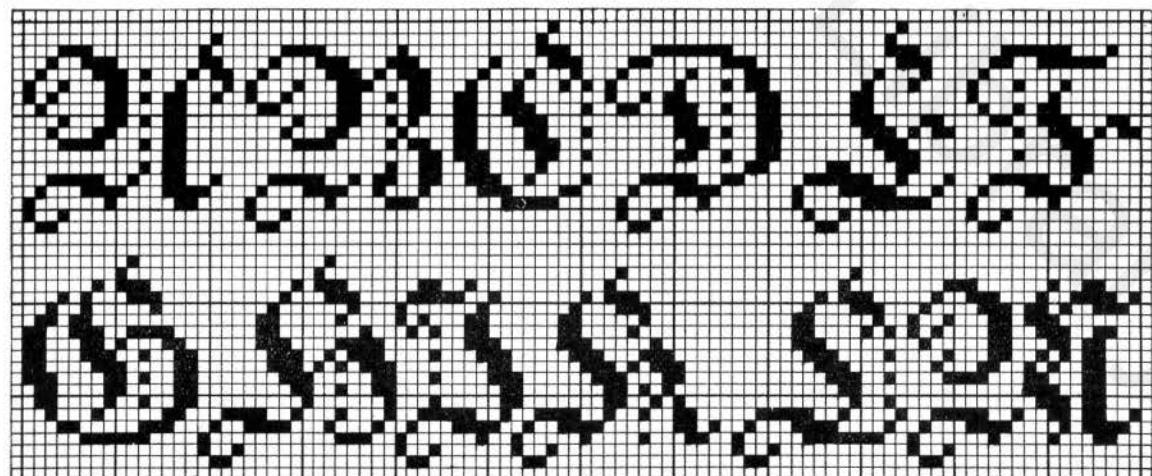


FIG. 112

18 meshes high

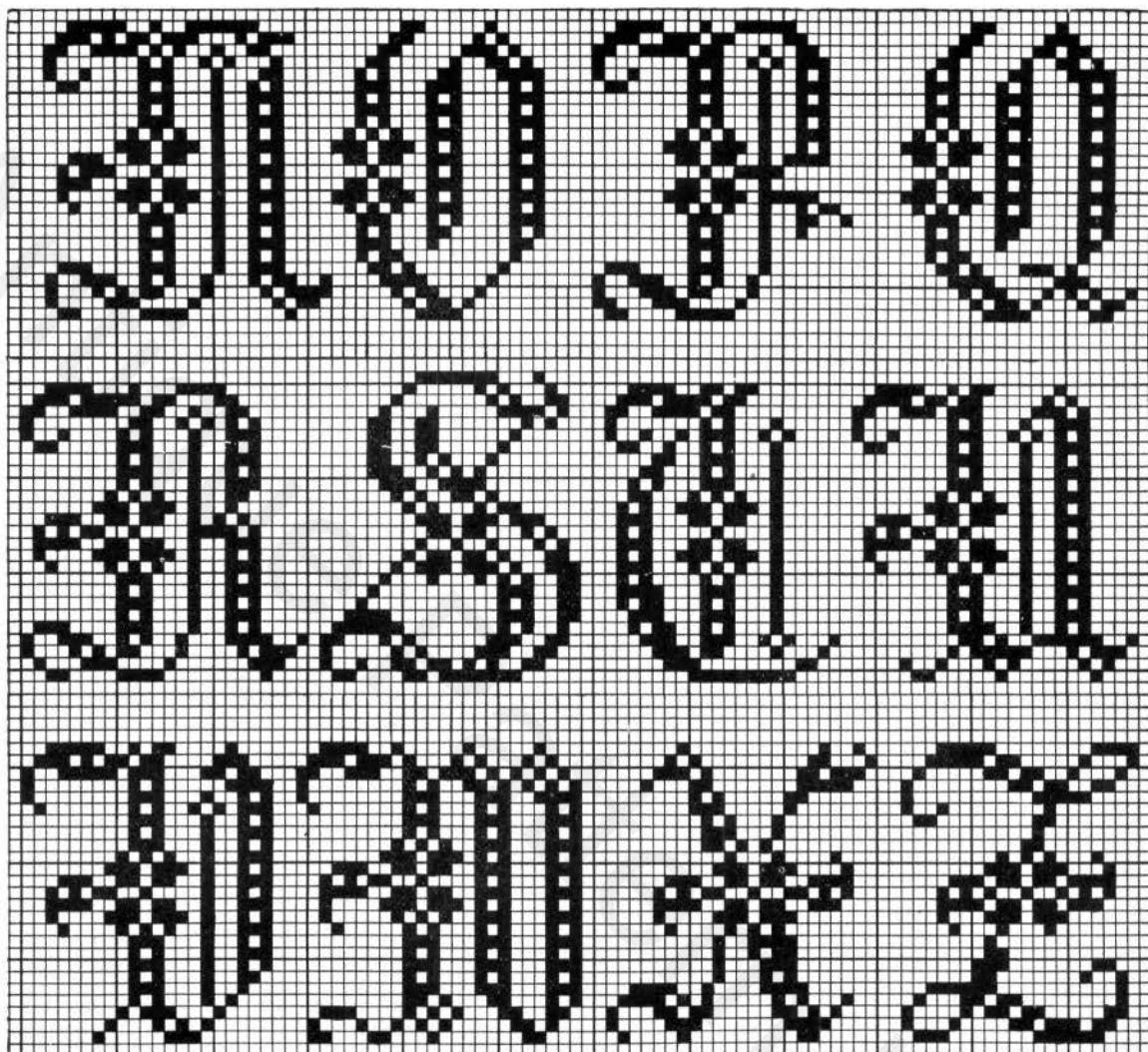


FIG. 111. (Continued from page 42.) For Y of this alphabet, see page 47, Fig. 125

25 meshes high

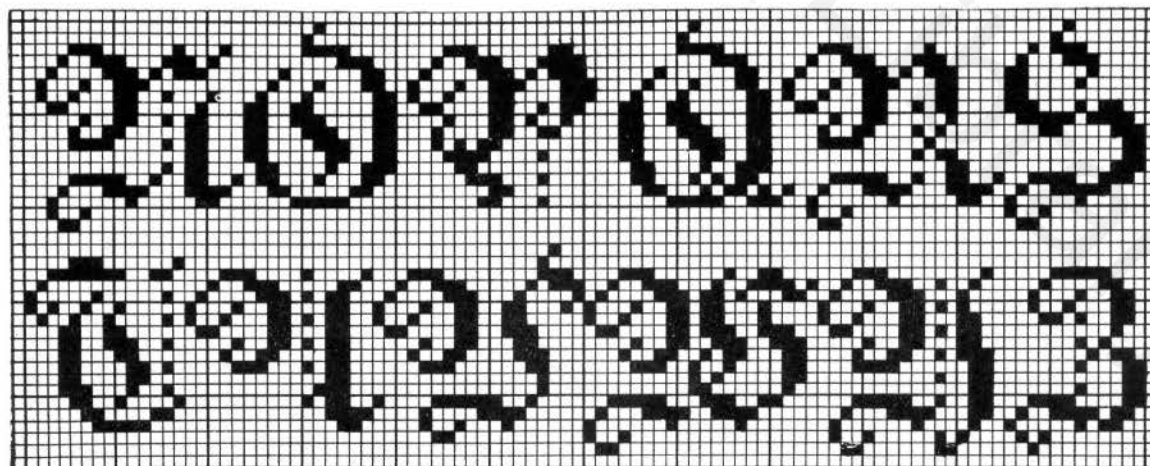


FIG. 112. (Continued from page 42.) For X of this alphabet, see page 47, Fig. 122

18 meshes high

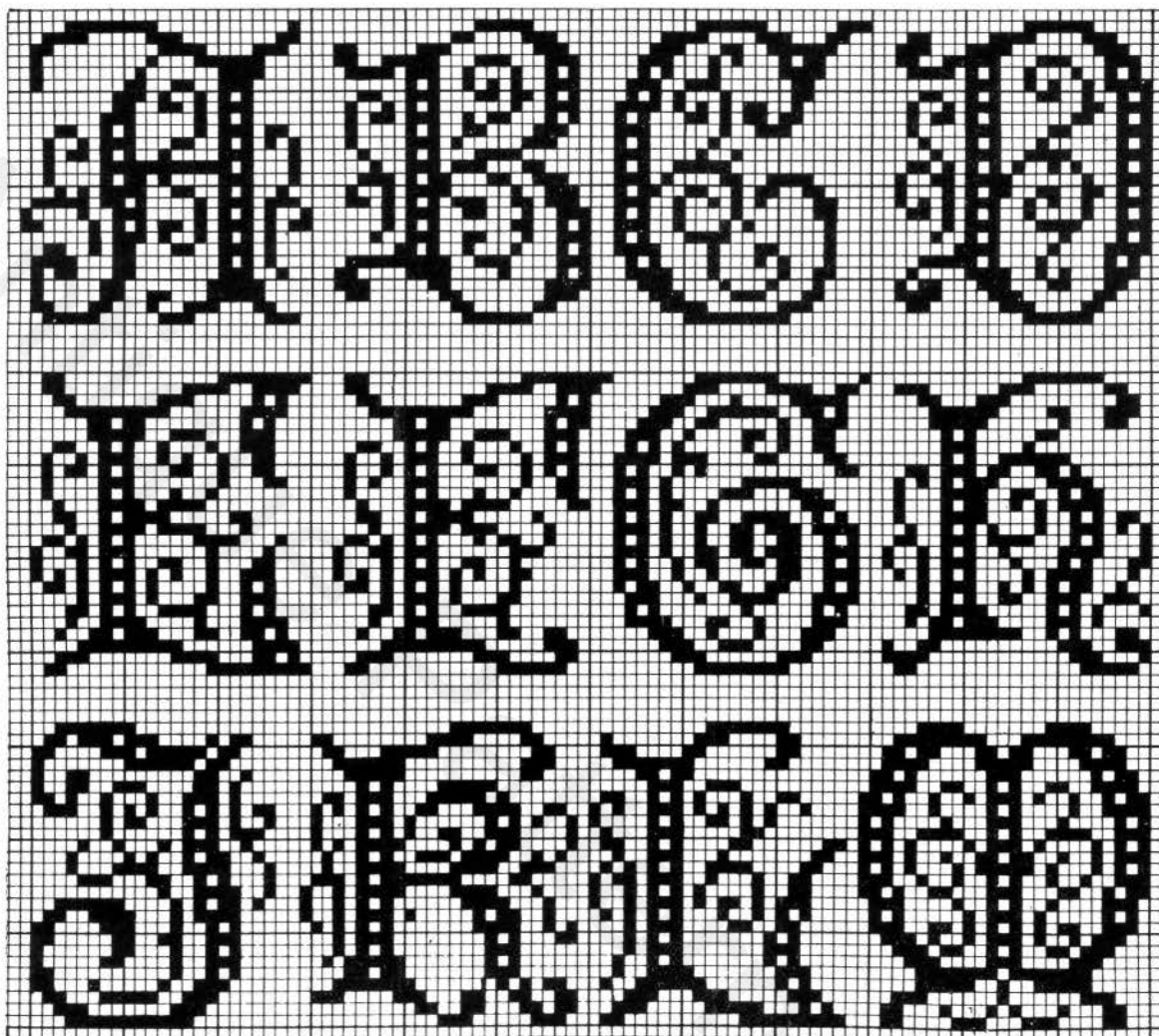


FIG 113. (Continued on page 45.)

26 meshes high

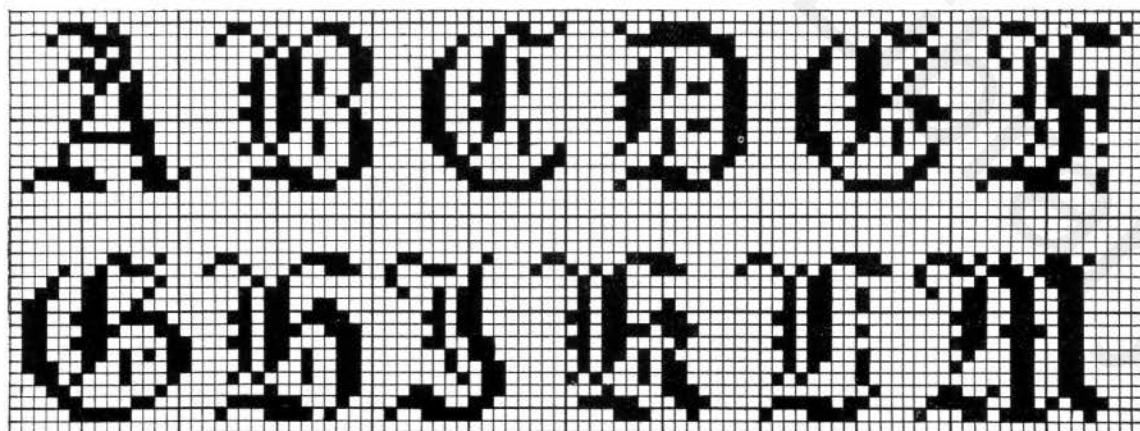


FIG. 114. (Continued on page 45.)

14 meshes high

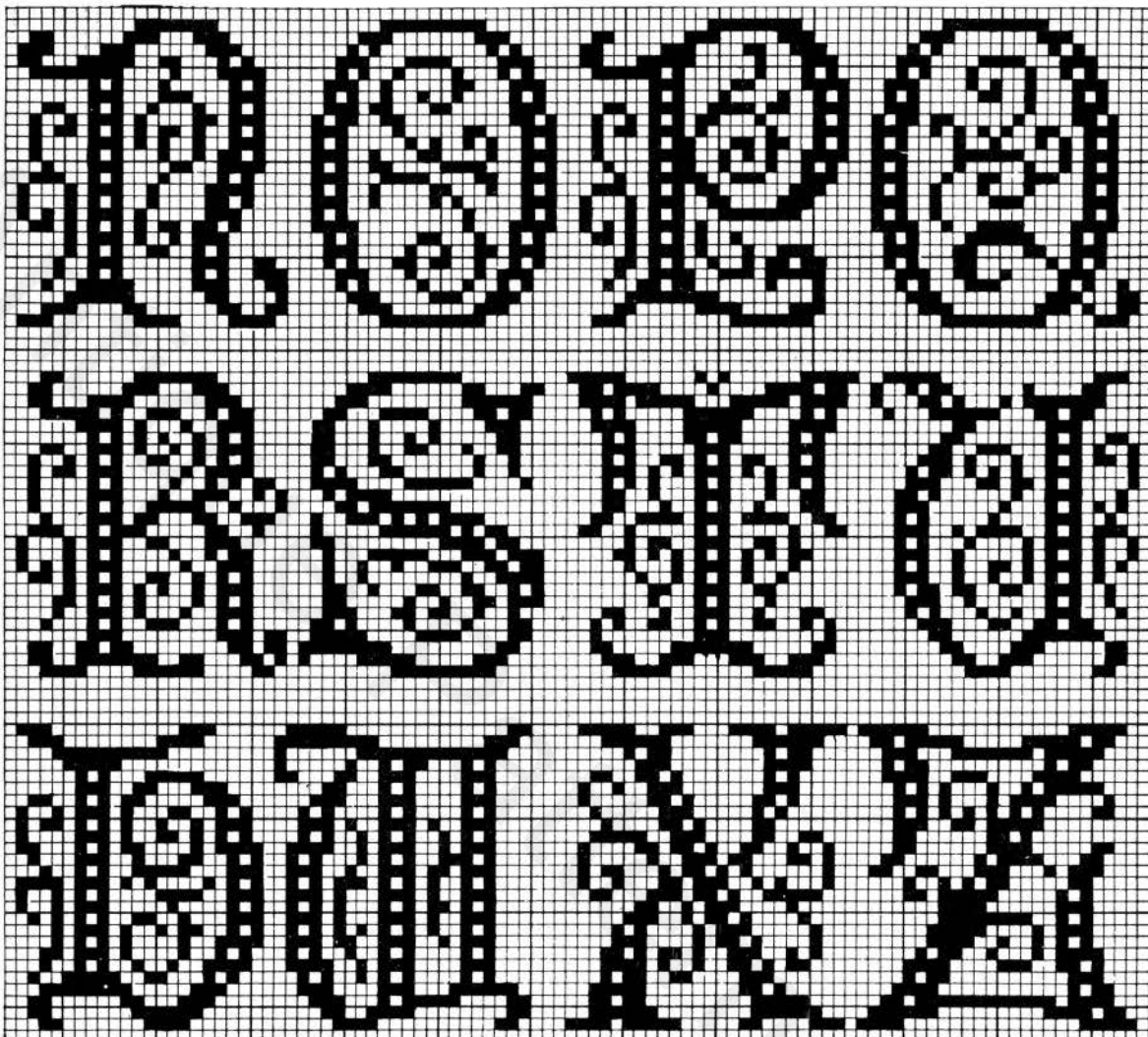


FIG. 113. (Continued from page 44.) For Y of this alphabet, see page 37, Fig. 93

26 meshes high

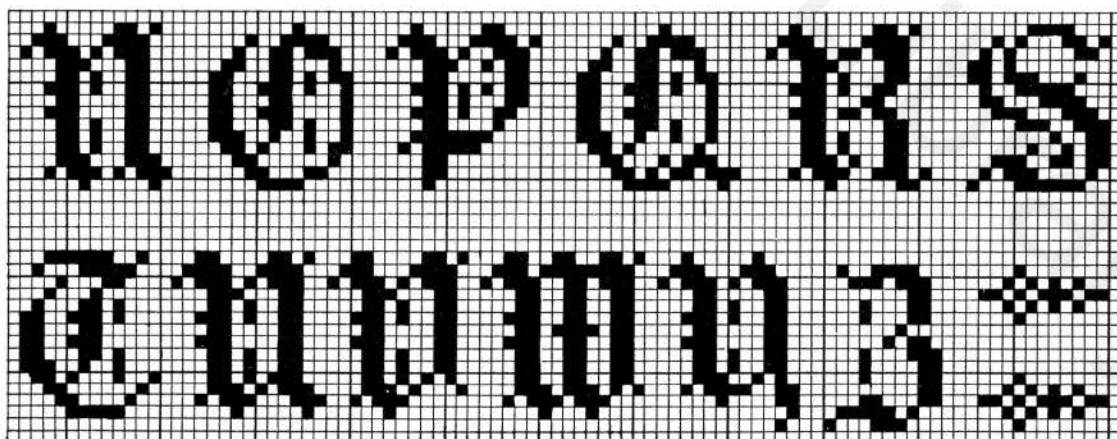


FIG. 114. (Continued from page 44.) For X of this alphabet, see page 47, Fig. 123

14 meshes high

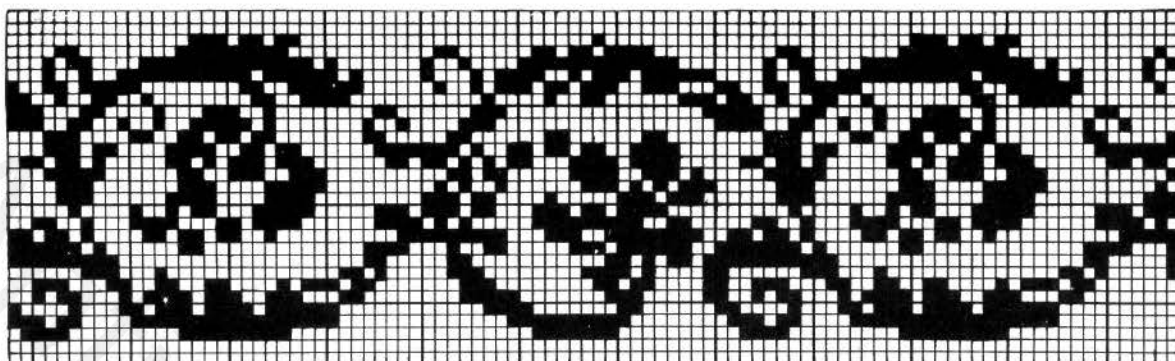


FIG. 115

29 meshes

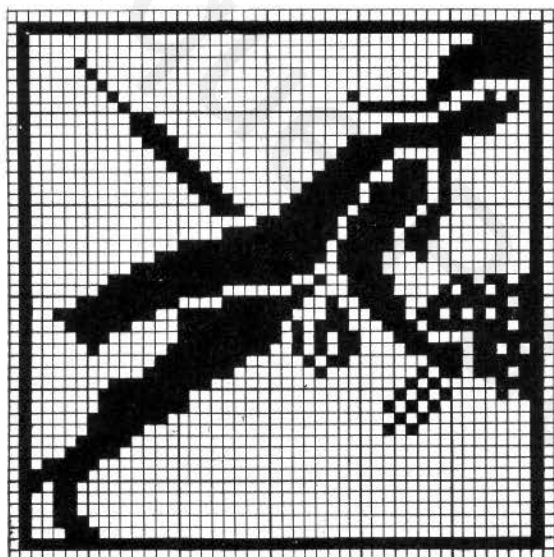


FIG. 116

48 meshes

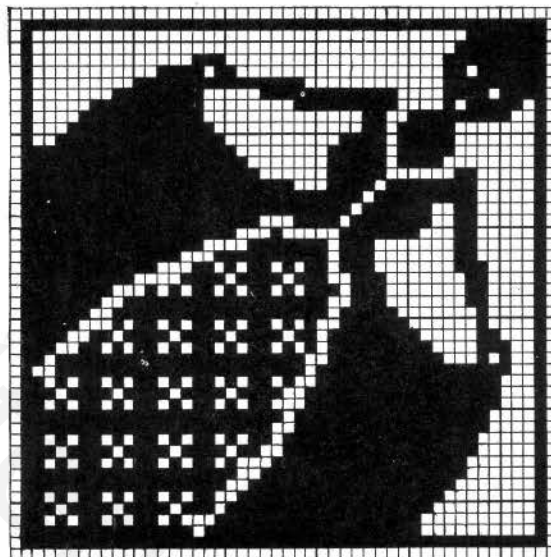


FIG. 117

48 meshes

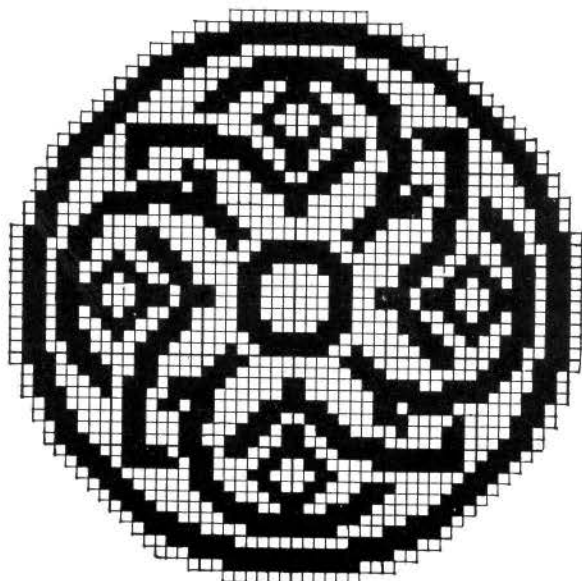


FIG. 118

50 meshes

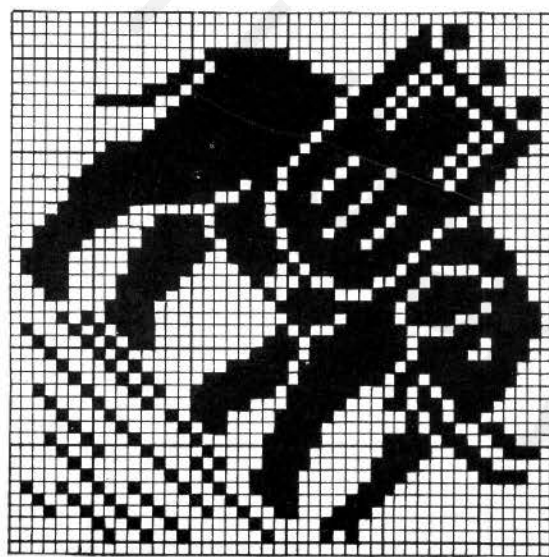


FIG. 119

45 meshes

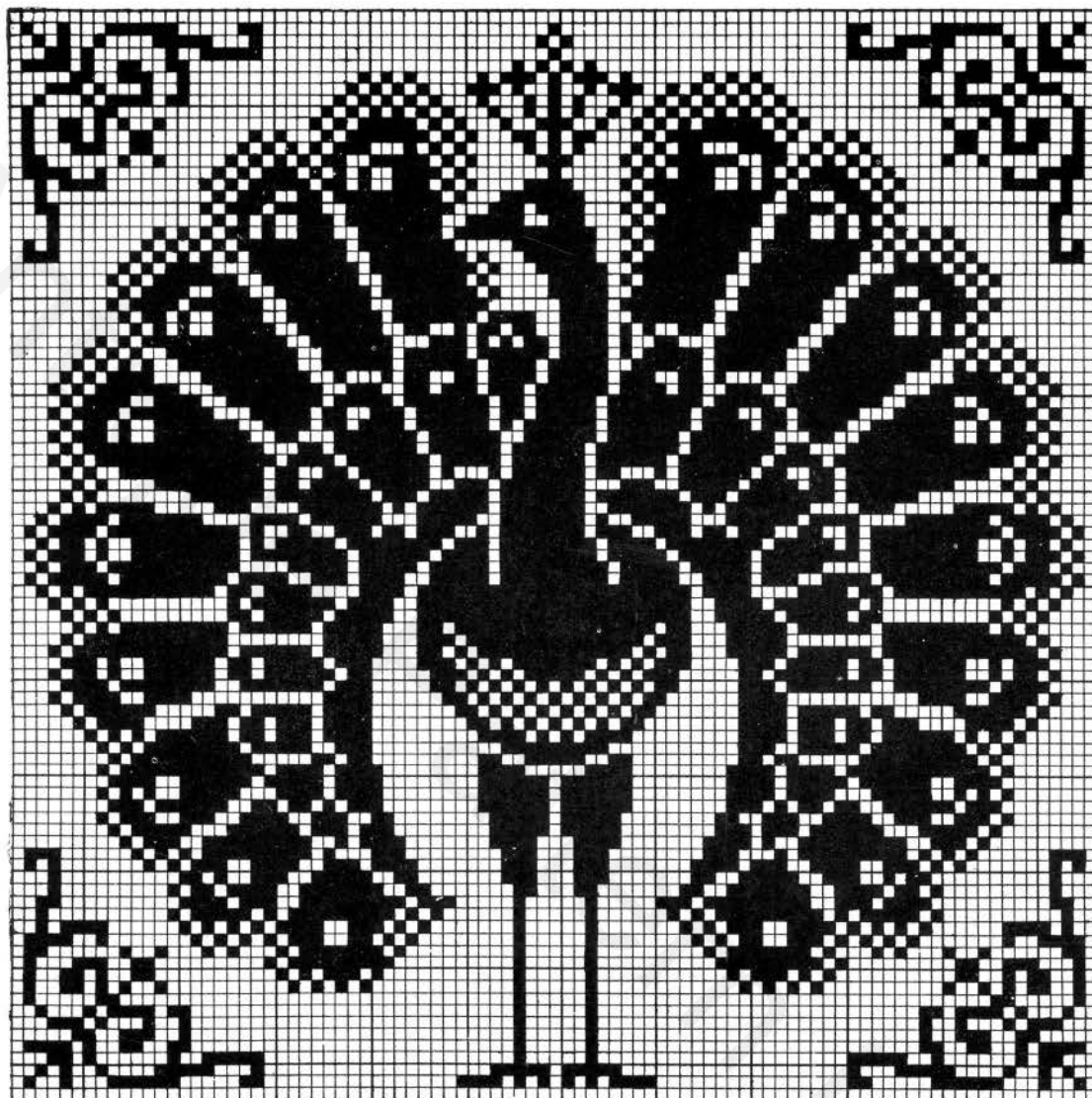


FIG. 120

91 meshes

FIG. 121

43 x 43 meshes

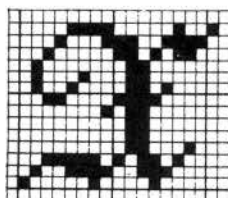


FIG. 122
See Fig. 112

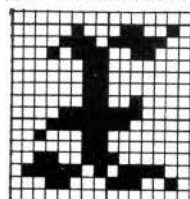


FIG. 123
See Fig. 114

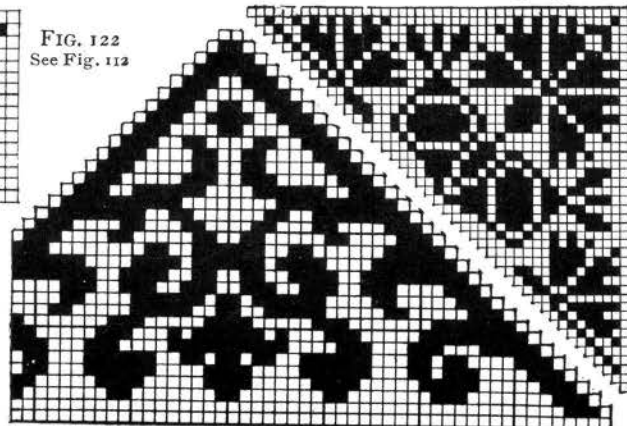


FIG. 124

33 x 64 meshes

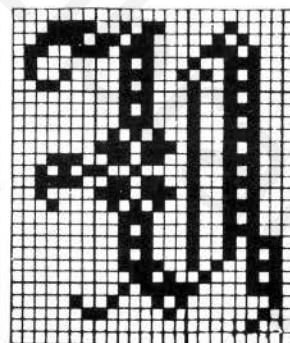


FIG. 125
See Fig. 111

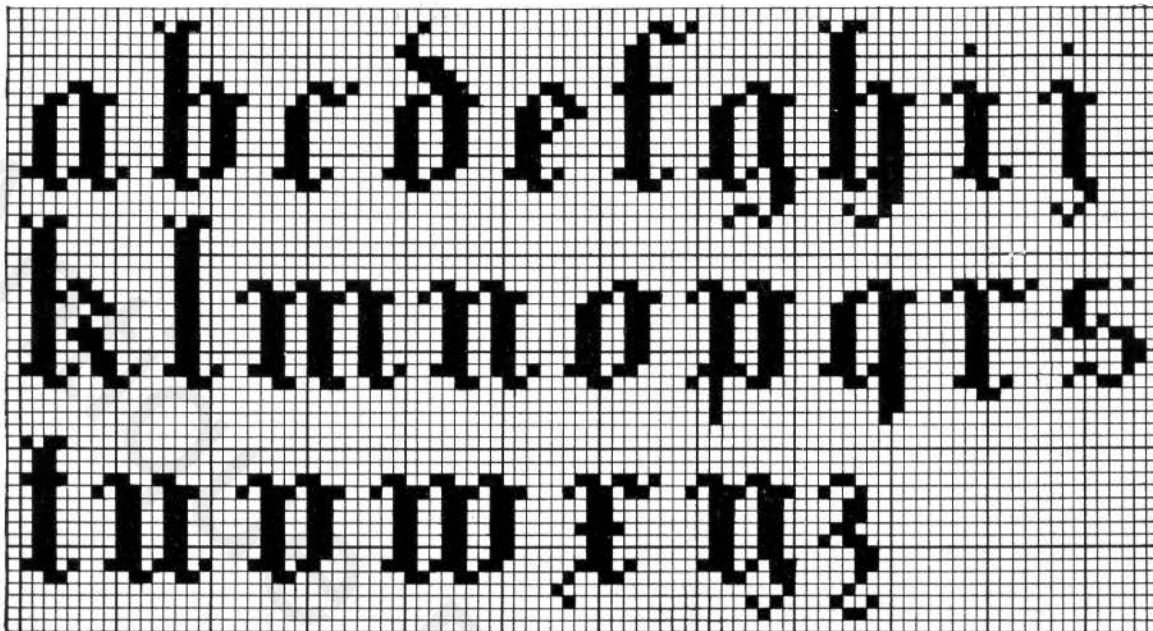


FIG. 126

14 meshes high

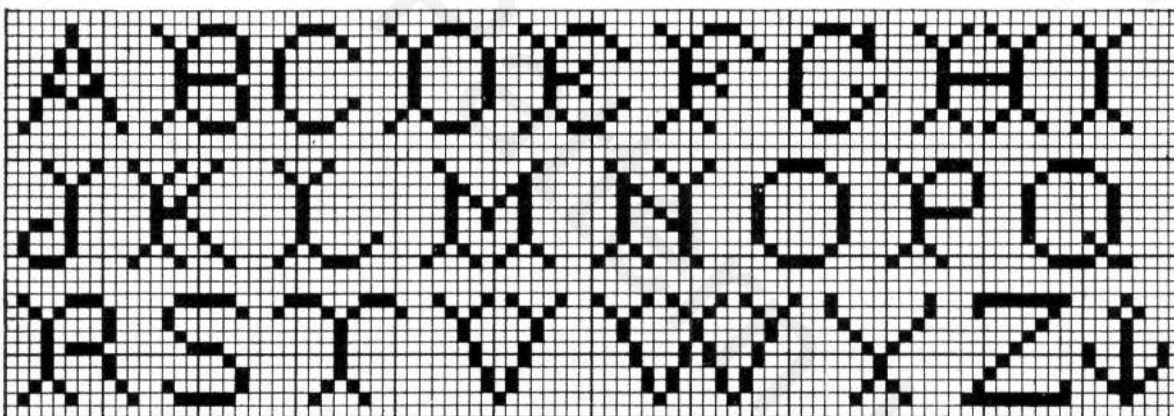


FIG. 127

9 meshes high

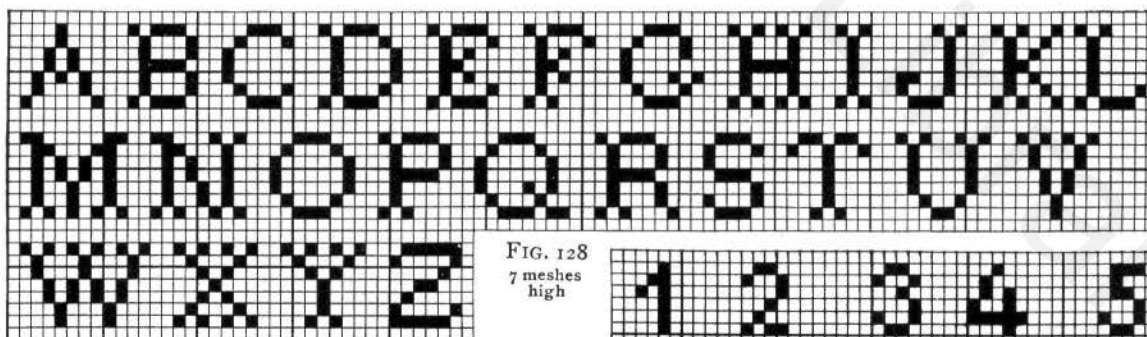


FIG. 128
7 meshes
high

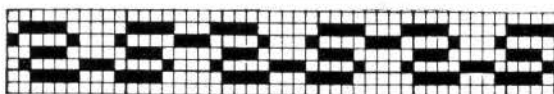


FIG. 129

7 meshes

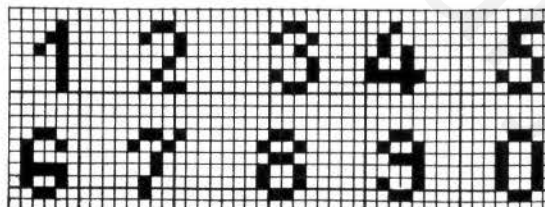


FIG. 130

6 meshes high

FOR BRIGHTNESS, LUSTER AND STRENGTH
“Peri-Lusta”  CANNOT BE
Threads EXCELLED

“PERI-LUSTA” Slipper Cotton



Art. 6

A medium twisted two-ply, heavy Crochet Cotton, in 140-yard balls highly mercerized. Used for crocheting Hand Bags, Slippers, Belts, Edgings and Insertions for Towels, etc. Also used for

embroidering Canvas and all kinds of work where a heavy thread is required. Supplied in all colors.

“PERI-LUSTA” Knitting Yarn

Art. 15

A soft twisted six-strand thread. Two-ply in half-ounce balls. Lustrous and silky. Used for all kinds of knitting.



Supplied in all desirable colors.

“Peri-Lusta” Jewel Art. 24

Same Twist as Slipper Cotton Art. 6 but a Size Finer. Used for same purposes as Slipper Cotton Art. 6.

“PERI-LUSTA” JEWEL

Art. 1



USED FOR EMBROIDERING ON HEAVY LINEN, CANVAS. ALSO FOR FRENCH KNOTS, CROSS-

STITCH, HARDANGER AND NORWEGIAN EMBROIDERY. ALSO USED FOR SCALLOPING AND OUTLINING LARGE PIECES.

WHITE SUPPLIED IN FOUR SIZES. COLORS IN TWO SIZES.

“PERI-LUSTA” CORDELLA Art. 19

USED FOR HEAVY COUCHING AND OUTLINE EFFECTS.



ALSO FOR CROCHETING BAGS, CAPS, AFGHANS, ETC. SUPPLIED IN ALL LEADING SHADES.

“PERI-LUSTA”

EMBROIDERY THREADS RETAIN THEIR BRILLIANCY AND COLOR UNTIL THE ARTICLE UPON WHICH IT IS WORKED IS WORN OUT.

“Peri-Lusta” is on Sale in Art Needlework Departments and Fancy Goods Shops

An Opportunity to Embroider Useful Articles, with correct colors already selected, is offered in

“Peri-Lusta”

Package Outfits

which present in a most convenient form the stamped article to be embroidered, sufficient cotton in correct twist, size and colors to complete the embroidery, and diagram lesson explaining in detail the stitches and arrangement of colors.

The line consists of

Pillows Centerpieces
 Scarfs Novelties

also

Ready-made Correct-fitting



Infant's Jackets
 “ Night Gowns
 “ Pinning Blankets

Infant's Petticoats
 “ Shoes
 “ Caps
 “ Dresses
 “ Long Coats

Shirtwaists
 Corset Covers
 Chemises
 Combinations
 Night Gowns
 Princess Slips
 Brassiers
 Drawers
 Collars and Cuffs
 Bibs
 Carriage Covers
 Children's Dresses
 “ Hats
 “ Drawers
 “ Coats
 “ Aprons
 “ Skirts
 “ Petticoats

ASK FOR ILLUSTRATED CIRCULAR

For Embroidering Lingerie, Shirtwaists, French Embroidery and Scallops use

“PERI-LUSTA” Convent Cotton

Art. 7

A medium twisted, four-ply cotton with a high luster. Supplied in white and all embroidery shades in different sizes.



“Peri-Lusta” Filo-Floss

Art. 2

A soft, smooth and lustrous six-strand embroidery thread. Loosely twisted. Can be used from one to six strands.

Used for fine embroidery, shadow work, and German embroidery.

Supplied in all embroidery shades.

“Peri-Lusta” Filoselle

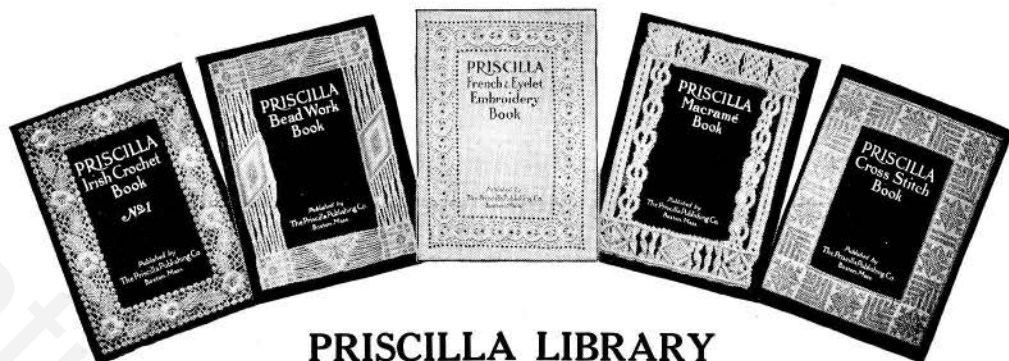
Art. 17

Best thread for fine work, especially adapted for Initials. Loosely twisted. Strands can easily be separated if required. Supplied in 28-yard balls in all colors.



Art. 13. Same as Art. 17. Supplied in 56-yard balls in white only.

“PERI-LUSTA” is on sale in Art Needlework Departments and Fancy Goods Shops



PRISCILLA LIBRARY

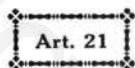
Practical Instruction Books for Needleworkers

- Priscilla Irish Crochet Book, No. 1** — This book has all the stitches and fillings for Irish Crochet, together with a large assortment of floral motifs. Full directions for working are given. **Price, 25 cents**
- Priscilla Irish Crochet Book, No. 2** — This second book on Irish Crochet supplements the first very nicely, and gives a large assortment of motifs and finished articles, with clear and full directions for working. **Price, 25 cents**
- Priscilla Bobbin Lace Book** — The designs in this book take up the work from the beginning, all the tools and materials being fully described. Beautiful designs are given for Torchon, Cluny, Russian and Bruges laces, with full directions for working. **Price, 25 cents**
- Priscilla Cross Stitch Book** — Has nearly two hundred working patterns for different articles for which cross-stitch is used. Many of them are suitable for bead-work. There are also six alphabets and directions for all kinds of canvas work. **Price, 25 cents**
- Priscilla Tatting Book** — This book contains many new designs for dress garnitures, collars, handkerchiefs, centrepieces, doilies, etc., with full directions for working. **Price, 25 cents**
- Priscilla Knitting Book** — This is a most useful collection of patterns for knitting, consisting of articles for men, women, and children. Articles in wool predominate. **Price, 25 cents**
- Priscilla Battenberg and Point Lace Book** — Here are practical, illustrated directions for making lace. Each step is taken up. Over one hundred stitches are shown, both simple and complicated. **Price, 25 cents**
- Priscilla Macramé Book** — Shows in detail how to do this fascinating form of Lace Work. Over 100 designs for Bags, Dress Garnitures, etc. **Price, 25 cents**
- Priscilla French and Eyelet Embroidery Book** — With the aid of this *new book* any one can learn this form of Embroidery. A wealth of designs given for Table Covers, Baby Wear, etc. Illustrations show *stitches* and a *detail* of nearly every design given. **Price, 25 cents**
- Priscilla Crochet Edgings and Insertions Book** — This book contains over 100 designs for beautiful crochet edgings and insertions which can be put to a multitude of uses. Handsomely illustrated with complete instructions. **Price, 25 cents**
- Priscilla Cook Book** — While this is not a Fancy Work Instruction Book, its contents are so interesting to most women that we have listed it here. Contains 442 dainty, appetizing and practical recipes by the famous culinary expert, *Fannie Merritt Farmer*. **Price, 25 cents**
- Priscilla Punched Work Book** — The beautiful designs in this book include articles for personal wear, table pieces, bedspreads, curtains, bureau-covers, cushions, pillows, lamp-shades, etc. All the stitches are illustrated and full directions given. **Price, 25 cents**
- Priscilla Bead Work Book** — This book gives directions for making all kinds of bead-work and illustrates many designs for bags, purses, card-cases, necklaces of all kinds, pendants, chains, girdles, hair ornaments, etc. The best book on bead-work. **Price, 25 cents**
- Priscilla Filet Crochet Book** — This new book gives a wide variety of patterns. Many illustrations of finished work are given, showing the beautiful effects possible, and a multitude of designs are carried out in block effect so that they can be easily copied. **Price, 25 cents**
- Priscilla Basketry Book** — In this new Basketry Book have been included the best of the various articles on basketry that have appeared in *THE MODERN PRISCILLA* from time to time, and a variety of new material never before published. **Price, 25 cents**
- Priscilla Hardanger Book** — In the opening chapters will be found the various foundation stitches and their many combinations. Following these will be found many attractive designs with details and copious descriptive text, making their reproduction an easy matter. **Price, 25 cents**
- Priscilla Drawn Work Book** — Full-sized details of each design are an important feature of this book, and by their aid the most intricate patterns can be copied with ease. Designs from Porto Rico, Fayal, Germany, Russia, and far-off China, besides many in the well-known Mexican work, make this book an unusual one. **Price, 25 cents**
- Priscilla Wool Crochet Book** — This book consists of articles in wool for men, women, and children. The section for babies and children deserves special mention. Fully illustrated. **Price, 25 cents**
- Priscilla Colored Cross Stitch Books — No. 1.** Has four (4) full-page plates in full color, illustrating 35 separate designs and a complete alphabet.
No. 2. This book also has four (4) full pages in color, illustrating 40 designs. Facing each plate is a full page of text matter, giving a wealth of suggestions for the worker. **Price, 25 cents each**

“CRYSTAL” ROPE AND FLOSS

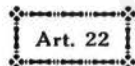
More Radiant Than Silk

A new and beautiful Embroidery Material, brighter and more lustrous than the very best silk.



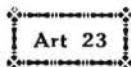
CRYSTAL ROPE

Similar in twist to Rope Silk, supplied in all embroidery and dress shades.



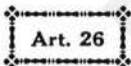
CRYSTAL FLOSS

Similar in size to Filo Silk, comes in all leading embroidery and dress shades.



“Crystal” Flossette 50-YARD CARDS

Silkiest and most brilliant embroidery article obtainable. Glistens like crystal. Desirable for embroidering Wearing Apparel and Fancy Work. Supplied in all embroidery and dress shades.



“Crystal” Couching

A HIGH-GRADE COUCHING CORD, used for outlining large conventional and floral designs. Extensively used for bag handles where a good quality cord is required. It makes an elegant appearance.

SUPPLIED IN ALL LEADING SHADES

“Crystal” *may be obtained in all Art Needlework Departments and Fancy Goods Shops*