

J. & P. COATS

CROCHET, CROSS STITCH AND TATTING



BOOK No. 14

PRICE 10 CENTS
DESIGNED BY
ANNE ORR

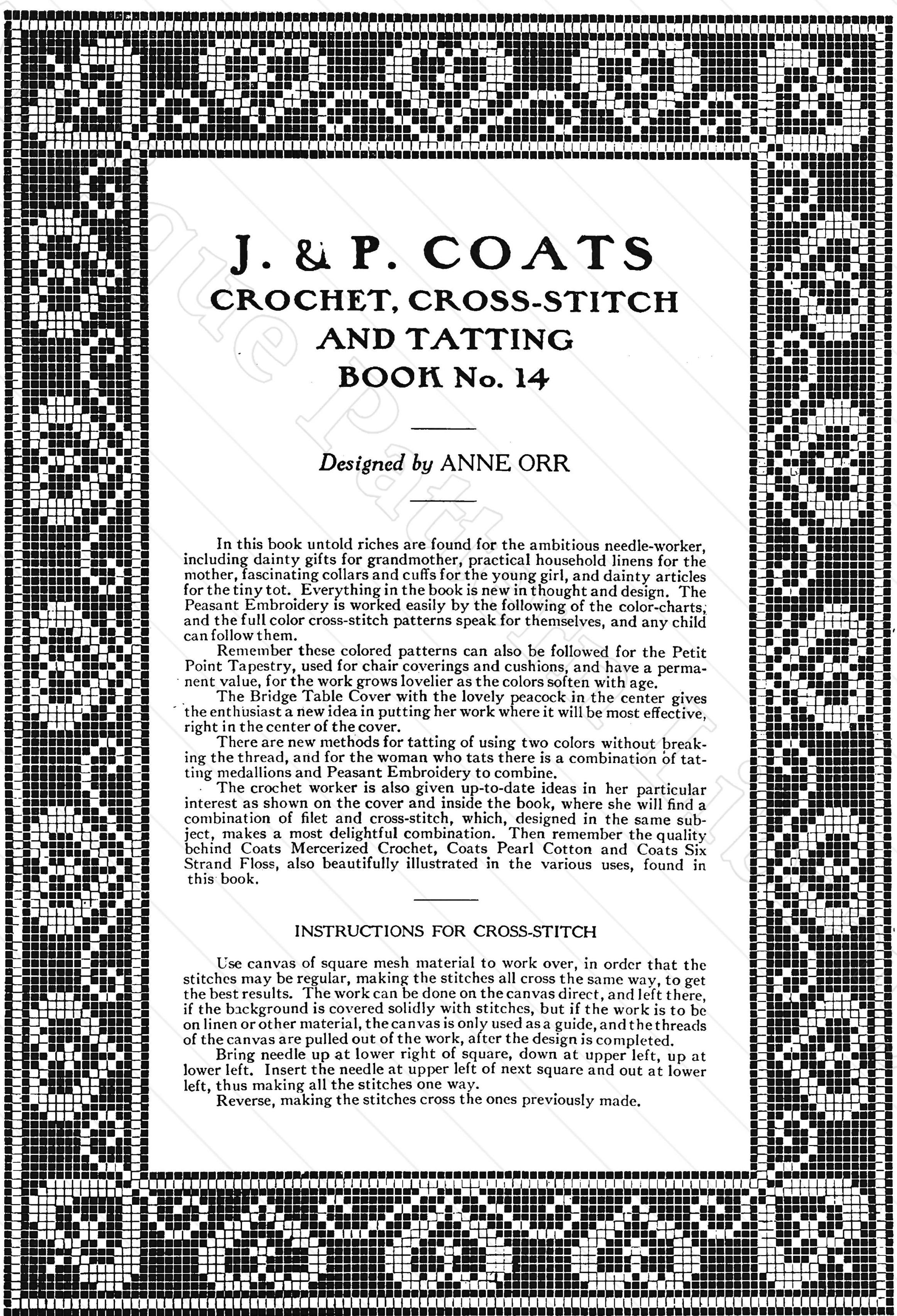
TABLE OF CONTENTS

	PAGE		PAGE
Afternoon Tea Set.....	19	Luncheon Set in Cross-stitch.....	18
Between Meal Cloth.....	17	New and Old Methods for Tatting.....	6
Bridge Table Cover.....	15	Old Lady's Bag.....	12
Child's Collar and Cuff Set.....	13	Peasant Embroidery Matches Tatting.....	8
Colored Cross-stitch Patterns.....	11	Tatting Centerpiece.....	13
Colored Cross-stitch Patterns.....	14	Tatting Edges and Insertions.....	7
Directions for Cover Centerpiece.....	5	Tea Apron.....	12
Directions for Crochet Stitches.....	4	Telephone Book Cover.....	13
Filet and Cross-stitch Meet in Design.....	9	Working Pattern for Bag.....	20
Girl's Afternoon Tea Set.....	12	Working Pattern for Collar.....	20
Girl's Collar and Cuff Set.....	12	Working Pattern Pillow Back Cover.....	22
Gown Yoke.....	10	Working Pattern Telephone Book Cover.....	21
Jonquil Centerpiece.....	16	Message to the Needleworker.....	3
Lady's Bag.....	12	J. & P. COATS ARTICLES.....	23

COPYRIGHTED 1923

BY

J. & P. COATS R. I. INCORPORATED
PAWTUCKET, R. I.



J. & P. COATS

CROCHET, CROSS-STITCH

AND TATTING

BOOK No. 14

Designed by ANNE ORR

In this book untold riches are found for the ambitious needle-worker, including dainty gifts for grandmother, practical household linens for the mother, fascinating collars and cuffs for the young girl, and dainty articles for the tiny tot. Everything in the book is new in thought and design. The Peasant Embroidery is worked easily by the following of the color-charts; and the full color cross-stitch patterns speak for themselves, and any child can follow them.

Remember these colored patterns can also be followed for the Petit Point Tapestry, used for chair coverings and cushions, and have a permanent value, for the work grows lovelier as the colors soften with age.

The Bridge Table Cover with the lovely peacock in the center gives the enthusiast a new idea in putting her work where it will be most effective, right in the center of the cover.

There are new methods for tatting of using two colors without breaking the thread, and for the woman who tats there is a combination of tatting medallions and Peasant Embroidery to combine.

The crochet worker is also given up-to-date ideas in her particular interest as shown on the cover and inside the book, where she will find a combination of filet and cross-stitch, which, designed in the same subject, makes a most delightful combination. Then remember the quality behind Coats Mercerized Crochet, Coats Pearl Cotton and Coats Six Strand Floss, also beautifully illustrated in the various uses, found in this book.

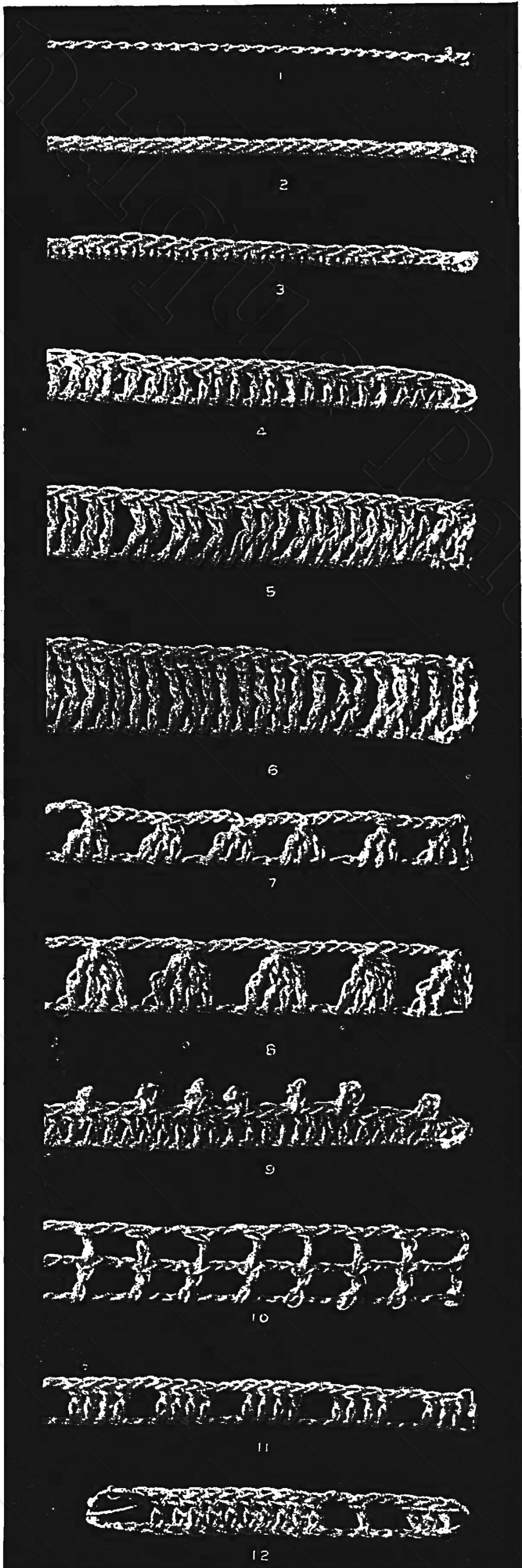
INSTRUCTIONS FOR CROSS-STITCH

Use canvas of square mesh material to work over, in order that the stitches may be regular, making the stitches all cross the same way, to get the best results. The work can be done on the canvas direct, and left there, if the background is covered solidly with stitches, but if the work is to be on linen or other material, the canvas is only used as a guide, and the threads of the canvas are pulled out of the work, after the design is completed.

Bring needle up at lower right of square, down at upper left, up at lower left. Insert the needle at upper left of next square and out at lower left, thus making all the stitches one way.

Reverse, making the stitches cross the ones previously made.

Foundation Stitches and How to Make Them



1. CHAIN STITCH (ch)—Is the foundation of all crochet work. Begin by twisting the thread around the needle once, to form a loop, then * throw the thread around the needle and draw through the loop. This forms one chain and is repeated from * for the count or length desired.

2. SLIP STITCH (sl st)—Is most frequently used to join rows, or to slip invisibly from one part of the work to another. Having one loop on the needle, insert the needle in the stitch directed, draw the working thread through this stitch and the loop or the needle with one motion, thus making a flat, close stitch.

3. SINGLE STITCH (s st)—Having one loop on the needle, insert the needle in the stitch directed, draw the working thread through this stitch, making two on the needle, then draw the working thread through these two loops.

4. TREBLE CROCHET (tr)—Having one loop on the needle, throw thread around the needle, insert the needle in the stitch directed, draw working thread through this stitch, making three loops on needle, draw working thread through two loops and then through the remaining two loops. Three chains equal one treble in measure and in count.

5. DOUBLE TREBLE CROCHET (d tr)—Is made similarly to the treble, the difference being that the thread is thrown around the needle twice and the loops are worked off two at a time for three repeats.

6. TRIPLE TREBLE CROCHET (tr tr)—Has the thread thrown around the needle three times and the loops are worked off two at a time for four repeats.

7. HALF TREBLE CROCHET (h tr)—Is sometimes called "group stitch." Having a loop on the needle, throw thread over, insert needle in stitch directed, draw working thread through, draw through two loops, leaving two loops on needle, * thread over, needle in next stitch, draw thread through, draw through two loops, leaving three loops on needle, repeat from *, leaving four loops on needle, then draw thread through all four loops.

8. HALF DOUBLE TREBLE (h d tr)—Is made in the same manner, leaving the last operation of each double treble until the required number have been made and then taking off all the stitches at once.

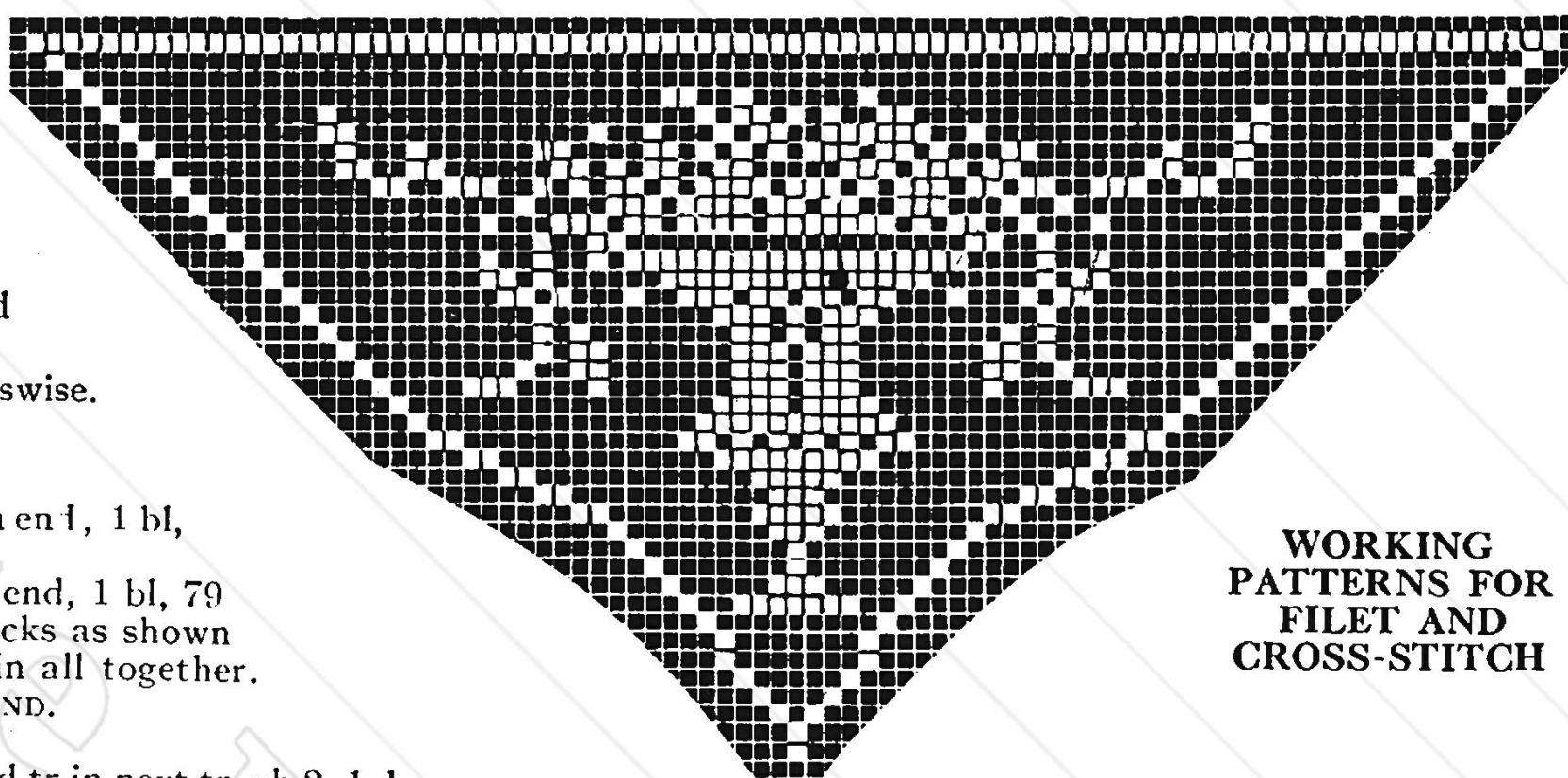
9. PICOTS (p)—Are usually made by a chain of three or five, then a slip stitch in the first chain. When there is a variation of the above, it is specifically given in the directions.

10. SPACES (sp)—Are the open meshes of filet crochet. To form a space, make one treble, then chain two, skip two stitches of previous row and make another treble. This should result in a perfect square but perfection requires persistent practice as well as the correct sizes of needle and thread. For a space at the beginning of a row, chain five, which allows three for the treble on the edge, and two for the usual chain, two at top of space.

11. BLOCKS (bl)—Are formed by working trebles in adjoining stitches for the required number. Where blocks are consecutive there are four trebles in the first block and three trebles in each following block. Therefore, to find the number of trebles in a row of blocks, multiply the number of blocks by three and add one; in two blocks there are seven trebles, in three blocks, ten trebles, etc.

12. BLOCKS AND SPACES—This illustration clearly shows the alternation of blocks and spaces in filet crochet. Counting from the right to left, as the work is made, there are one block, two spaces, three blocks, one space. The next series of blocks is cut off. This would read in directions, 1 bl, 2 sp, 3 bl, 1 sp.

Directions and Patterns for Centerpiece on Cover



DIRECTIONS FOR CROCHET

MATERIALS—Coats Mercerized Crochet No. 30. No. 10 Hook.

Start at one side, working crosswise.

Ch. 258.

1st Row—85 Bl.

2nd Row—Drop off 1 bl at each end, 1 bl, 81 sp, 1 bl.

3rd Row—Drop 1 bl at each end, 1 bl, 79 sp, 1 bl. Continue to drop off blocks as shown in design. Make 6 designs and join all together.

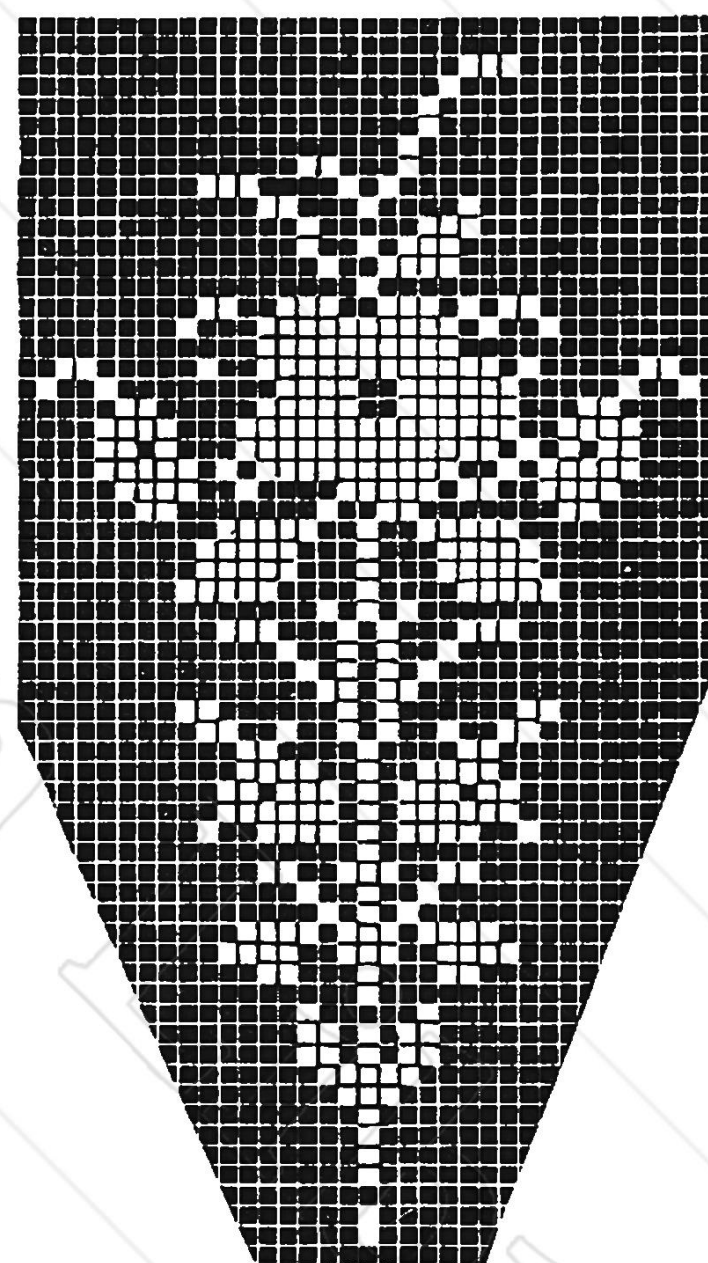
EDGE ALL AROUND.

1st Row—1 sp over each bl.

2nd Row—Start in tr, *ch 5, 1 d tr in next tr, ch 2, 1 d tr in next tr, ch 5, 1 sl st in next tr, sl st to 2nd tr, repeat from *.

3rd Row—* 6 tr in ch 5, 1 p, 2 tr in same ch, 2 tr in ch 2, 1 p, 2 tr in same ch, 2 tr in next ch 2, 1 p, 2 tr in same ch, 2 tr in ch 5, 1 p, 6 tr in same ch, 2 sl st in sl st of last row, repeat from *

WORKING PATTERNS FOR FILET AND CROSS-STITCH



DIRECTIONS FOR THE CROSS-STITCH

To follow the cross-stitch spray is very simple because it is just made of flat colors as described.

The center flower is worked in J. & P. Coats Six Strand Floss over canvas 9 meshes to the inch and with six strands of the floss as follows: The center flower is made of Rose 46, the upper flower to left and lower flower to right is of Light Steel Blue 69. The upper flower to right is made of Dk. Lavender 37, while the flower at lower left is of the Rose 46. All stems are made of Mid Apple Green 104, and the leaves of Moss Green 5.

REGARDING FILET—NEW METHOD OF ADDING MESHES AT LAST END OF ROW

All workers know it is a simple process to increase the length of a row by adding meshes at the first end by making a chain on the end of the preceding row and making the extra blocks or spaces on that chain, but it has been claimed the only way to add meshes at the end of a row already made was to make the trebles run crosswise of the work, which is never very satisfactory as it will look different from the remainder of the row. By using the following method it will all be the same: When making a row on which meshes are to be added at last end of row, instead of making the last treble of the block already there, ch 2, and fasten with a slip stitch to the same loop that ordinarily you would put the last treble in; that will bring your thread even with the lower edge of row, then make a chain long enough to work the extra meshes on. If 1 mesh is required it will want ch of 6; if 2 meshes, ch 9; if 3 meshes, ch 12, adding three stitches for each mesh after the first one; turn and make either sp or bl along chain, just which is desired, then fasten with slip stitch to top of last mesh before the chain was added; turn, slip stitch to end of added meshes, then you will be ready to start another row.

DIRECTIONS FOR FILET CROCHET WORK

The tighter the thread is held, the firmer and more even the work, and if crocheted closely, the following table can be relied upon. However, practice alone will enable the worker to crochet tightly enough to follow this table, and if the thread is loosely held, the meshes will increase to the inch.

The more closely the table is followed, the more beautiful the finished article.

TABLE

Size of Thread	No. Hook	No. of Meshes to the inch	Size of Thread	No. Hook	No. of Meshes to the inch	Size of Thread	No. Hook	No. of Meshes to the inch	Size of Thread	No. Hook	No. of Meshes to the inch
3	2	3	20	8	5	60	12	7	100	14	
5	2	3	20 to 30	10	5	70	12	8	100	14	9½ to 10
5	7	7	40	11	6	80	13	8½	If very tight will make 11 meshes to inch.		
10	10	4½	50	12	6½	80	14	9			

Tatting

ABBREVIATIONS IN TATTING

r st—Stands for reverse stitch.
 sl st—Stands for slip stitch.
 ds—Stands for double stitch.
 r—Stands for ring.
 p—Stands for picot.
 ch—Stands for chain.

s ch—Stands for short chain.
 l ch—Stands for long chain.
 lp—Stands for long picot.
 j—Stands for join, joined, joining.
 sp—Stands for space.

cl—Stands for close.
 sep—Stands for separated.
 rep—Stands for repeat.
 p ch—Stands for picot chain.
 lr—Stands for large ring.
 sr—Stands for small ring.

NOTE

All beginners should use coarse thread to see work better.

A ring is always to be drawn close unless otherwise stated.

Never break off thread after winding shuttle if directions call for chain (ch).

Space means to allow thread between last ring and new one.

When a shuttle has a point or hook, be careful to keep point forward.

Rings are to be made close together unless directions call for space (sp).

Always read directions through one whole sentence before working, spaced thus—directions—

HOW TO MAKE TATTING

With end of shuttle thread between thumb and first finger of left hand, pass thread around fingers of this hand not too tightly. Cross thread over first finger. Holding point of shuttle between first finger and thumb of right hand, with shuttle horizontal, and thread from you, raise thread with middle finger of right hand by passing finger first over and then under. Pass shuttle under thread on left hand, between first and second fingers, without releasing shuttle; bring back over this thread and under thread on right hand, draw shuttle thread forward tightly, gradually drawing up stitch with fingers of left hand. Do not release stitch. Draw loop up to thumb and catch with thumb. Notice that the left hand thread is looped around the shuttle thread. This is called a half stitch (the first half).

For the second half, thread is dropped instead of raised, shuttle is passed over left hand thread instead of under (as before), is brought through below, between the two threads (as before) and drawn up the same.

These are the only motions in tatting, and in no case should the shuttle be released in making a ring which is composed of any number of stitches.

A picot which is made by leaving a space of thread between stitches may be joined by drawing working thread through picot and passing shuttle through loop, then drawing up close to resemble a half stitch but not to be counted as such.

A chain is made by working with an extra thread for the left hand or by winding a long thread off the shuttle to work with.

NEW METHOD IN TATTING



FIGURE 1



FIGURE 2

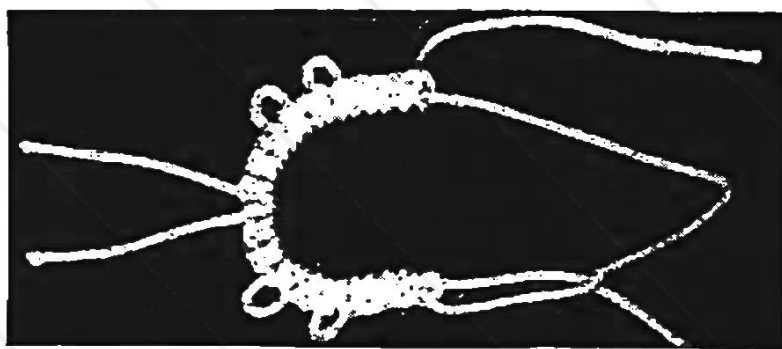


FIGURE 3

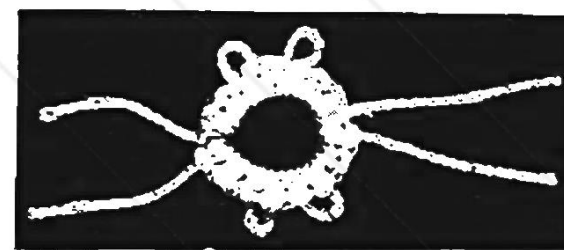


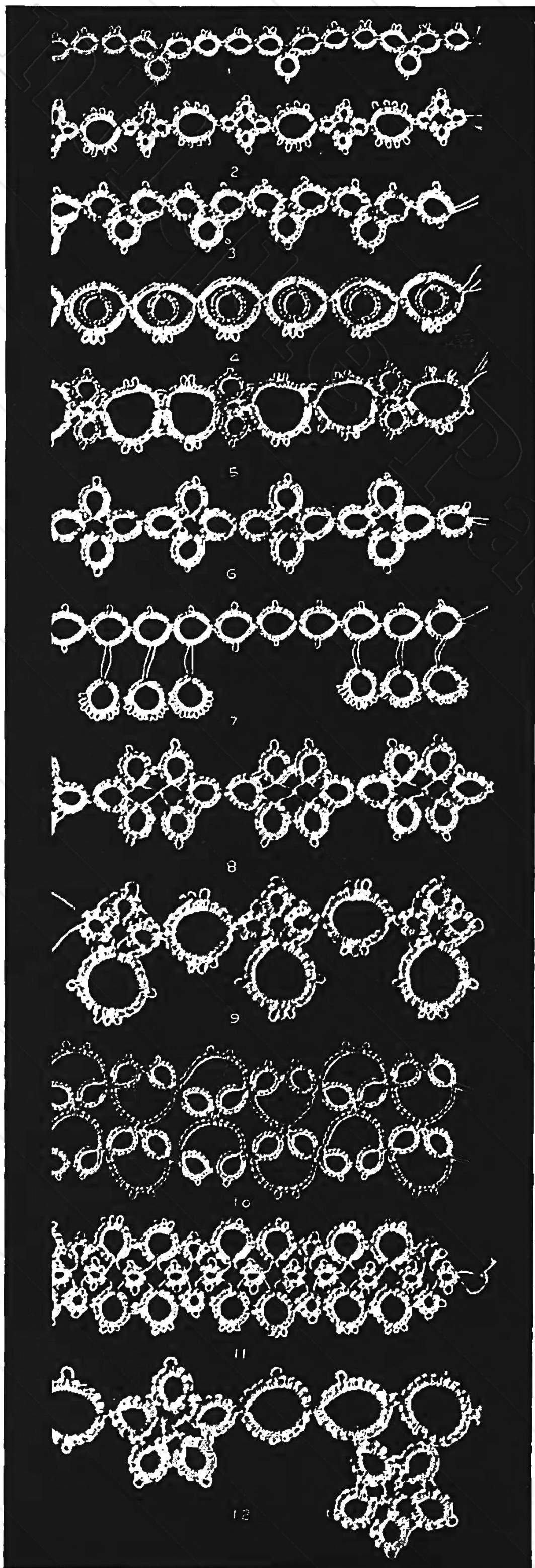
FIGURE 4

DIRECTIONS FOR THE REVERSE STITCH

Begin ring, making three double stitches, picot, two double stitches, picot, three double stitches (figure one) (this is one half of ring), take work off from hand* (reverse), turn over (figure two), put work on hand so that the thread which was under is now over the hand. Take shuttle No. 2 and make the other half of the ring, with the reverse stitch, which is done by holding the thread on the hand taut, and making the stitch with the thread from the shuttle, making three double stitches, picot, two double stitches, picot, three double stitches (figure three), take work from hand, turn over*, take shuttle No. 1 and close ring (figure four).

In joining while doing reverse work do not draw shuttle very taut after passing through joining loop, but draw the loop back again so that the joining stitch is made with the thread from shuttle and the thread on the hand may be drawn back and forth.

Tatting, Edgings and Directions



1. EDGING USED WITH YOKE FOR CHILD.—Coats Mercerized Crochet No. 50. Two Shuttles. Begin r with shuttle No. 1, 7 ds, p, 2 ds, r st, 4 ds, p, 1 ds, p, 4 ds, cl. Shuttle No. 1, r, 2 ds, j to first p of last r, 7 ds, p, 7 ds, p, 2 ds, cl. r, 2 ds, j to last p of last r, 7 ds, r st, 4 ds, p, 1 ds, p, 4 ds, cl. r, 9 ds, r st, 4 ds, p, 1 ds, p, 4 ds, cl. one more r like last.

2. NARROW EDGING OR INSERTION.—Coats Mercerized Crochet No. 30. Two Shuttles. Lr 4 ds, p, 2 ds p three times 4 ds, r st, 4 ds, p, 2 ds, p, three times, 4 ds, cl. Sr, 3 ds, p, 1 ds, r st, 3 ds, p, 1 ds, cl. Second sr, 1 ds, j to last p of first r, 3 ds, p, 3 ds, p, 1 ds, cl. Third sr, with other sh on opposite side, like second r. Fourth sr, 1 ds, j to last r, 3 ds, r st, 1 ds, j to second last 3 ds cl.

3. EDGING (PHEASANT'S EYE).—Coats Mercerized Crochet No. 30. Colors, White and Pink. Three Shuttles. Tie threads. Shuttle No. 1, begin Lr, 8 ds, p, 1 ds, p, 1 ds, p, 8 ds, r st, shuttle No. 2, 9 ds (carry pink thread along and make st over both threads). Take work from hand, make small inner ring, pink, 10 ds, join to thread (not to picot) between ninth and tenth ds of lr on opposite side. 10 ds, cl, finish lr r st, 9 ds, cl.

4. DIRECTIONS FOR REVERSE STITCH PATTERN No. 2.—R 4 ds, p, 4 ds, r st, shuttle No. 2, 5 ds, p, 3 ds, cl. shuttle No. 2, r 3 ds, j to last p of last r, 5 ds, p, 5 ds, p, 3 ds, cl. shuttle No. 2, r 3 ds, j to last p of last r, 5 ds, r st, shuttle No. 1, 4 ds, p, 4 ds, take up shuttle No. 2, cl.

5. BEADING TWO COLORS.—Coats Mercerized Crochet No. 30. Three Shuttles. Tie threads. Lr, * 4 ds, p, 4 ds, p, 2 ds, p, 4 ds, p, 4 ds, *repeat with shuttle No. 2 in r st. (pink thread is carried along and r st is made over both threads) cl. Smaller r. Pink, 4 ds, j to lr, 4 ds, p, 4 ds, p, 4 ds, cl. Second sr like first on opposite side. Smallest r, white, 4 ds, r st, 4 ds, cl. Second lr, like first lr, j to first and second sr. Third lr the same, j to second lr.

6. REVERSE STITCH PATTERN.—(See Page 6) Make r of 6 ds, p, 2 ds, r st, shuttle No. 2, make 6 ds, p, 2 ds, cl. shuttle No. 2, r 2 ds, j to last p of last r, 6 ds, p, 6 ds, p, 2 ds, cl. shuttle No. 1, r 2 ds, j on 1st p of 1st r, 6 ds, p, 6 ds, p, 2 ds, cl. shuttle No. 1, r 2 ds, j to last p of last r, 6 ds, r st, shuttle No. 2, make 2 ds, j to last p of 2nd r, 6 ds, cl. rep. from beginning to desired length.

7. TRIMMING FOR DRESSES.—Coats Mercerized Crochet No. 30. Two Shuttles. Begin r, shuttle No. 1, 6 ds, p, 6 ds, r st, shuttle No. 2, 6 ds, take work from hand, separate r, shuttle No. 2. Space one fourth inch. r, 6 ds, p, 11 ds, separated by eleven ps, 6 ds, cl. Finish first r, 6 ds, cl. Repeat twice join separate rs at first and last p, make three rs, like first, omitting separate rs.

8. INSERTION.—Coats Mercerized Crochet No. 10. Two Shuttles. Begin r with shuttle No. 1, 5 ds, p, 3 ds, r st, 5 ds, p, 3 ds, cl. Space one sixteenth inch, shuttle No. 1, r, 3 ds, j to first p of first r, 5 ds, p, 5 ds, p, 3 ds, cl. Shuttle No. 2, space one sixteenth inch, r, 3 ds, j to last p of first r, 5 ds, p, 5 ds, p, 3 ds, cl. Tie threads, space one sixteenth inch on each side of knot, shuttle No. 2, r, 3 ds, j to last p of last r, 5 ds, p, 5 ds, p, 3 ds, cl. Shuttle No. 1, r 3 ds, j to p of second r, 5 ds, p, 5 ds, p, 3 ds, cl. r. Shuttle No. 1, 3 ds, j to last p, of last r, 5 ds, r st, 3 ds, j to second last r, 5 ds, cl.

9. EDGING FOR TOWELS.—Coats Mercerized Crochet No. 3. Two Shuttles. Begin small r with shuttle No. 1, 2 ds, p, 2 ds, r st, 2 ds, p, 2 ds, cl. Large r, 2 ds, j to p of small r, 5 ds, p, 5 ds, p, 1 ds, p, 5 ds, p, 5 ds, p, 2 ds, cl. Second small r, shuttle No. 2, 2 ds, j to p of first small r, 2 ds, p, 2 ds, p, 2 ds, cl. Third small r, 2 ds, j to second small r, 2 ds, r st, 2 ds, j to last p of large r, 2 ds, cl. Second large r, 5 ds, p, 1 ds, p, 1 ds, p, 5 ds, r st, 5 ds, p, 1 ds, p, 1 ds, p, 5 ds, cl.

10. EDGE OR INSERTION.—Coats Mercerized Crochet No. 50. Pink and white. Begin with white.

1st Row—R, 7 ds, p, 3 ds, p, 7 ds, cl. with pink ch 8 ds, p, 8 ds, white, r 7 ds, j to last p of last r, 3 ds, p, 7 ds, cl. Turn and r 9 ds, p, 9 ds, cl. Pink, ch 7 ds, p, 3 ds, p, 7 ds, white, r 9 ds, j to p of last r, 9 ds, cl. Repeat for length desired.

2nd Row—With white, r 9 ds, j to p of 1st ch, 9 ds, cl. pink, ch 7 ds, p, 3 ds, p, 7 ds. White, r 9 ds, j in same p as last r, 9 ds, cl. Turn and r 7 ds, p, 3 ds, p, 7 ds, cl. Pink, ch 8 ds, j at j of 3rd and 4th r made in 1st row, 8 ds. White, r 7 ds, j to last p of last r, 3 ds, p, 7 ds, cl. Repeat.

11. INSERTION OR EDGING.—Can be used for either. Coats Mercerized Crochet No. 30. Two Shuttles. *Begin first small r, shuttle No. 1, 2 ds, p, p, 2 ds, r st, 2 ds, p, 2 ds, cl. Space one sixteenth inch large r, shuttle No. 1, 4 ds, p, 4 ds, p, 1 ds, p, 1 ds, p, 4 ds, p, 4 ds, cl. Make large r like last on opposite side with shuttle No. 2. * repeat small r like first small r. * Space small r, shuttle No. 1, 2 ds, j to last p of large r, 2 ds, p, 2 ds, p, 2 ds, cl. * Repeat with shuttle No. 2 on opposite side.

12. EDGING FOR CENTERPIECES, ETC.—Coats Mercerized Crochet No. 3. Two Shuttles. Large r, 6 ds, p, 6 ds, p, 6 ds, r st, 6 ds, cl. Small r, 4 ds, p, 2 ds, r st, 4 ds, p, 2 ds, cl. Slip st on thread of shuttle No. 1, second small r, shuttle No. 2 space one eighth inch, 2 ds, j to last p of first r, 4 ds, p, 4 ds, p, 2 ds, cl. Slip st to thread between last two rs. Third and fourth r like second. Fifth r, 2 ds, j to last r, 4 ds, slip st thread of shuttle No. 1, to thread between two last rs. Complete fifth r in r st, 2 ds, j to p of first small r, 4 ds, cl. Second large r, 6 ds, j to last p of first large r, 6 ds, p, 6 ds, r st, 6 ds, cl. Third large r, 6 ds, p, 6 ds, r st, 6 ds, p, 6 ds, cl. Begin third group of small rs, like first group, making three rs, then make opposite rs, with other shuttle, and finish as before.

Peasant Embroidery Fitted to Tatting and Filet

(See Colored Page)



DIRECTIONS FOR EDGING FOR CENTERPIECE.

This tatted edge borders the Between-Meal Cloth shown on page 17, and is very dainty combined with the colored cross-stitch baskets and bow-knots as illustrated there.

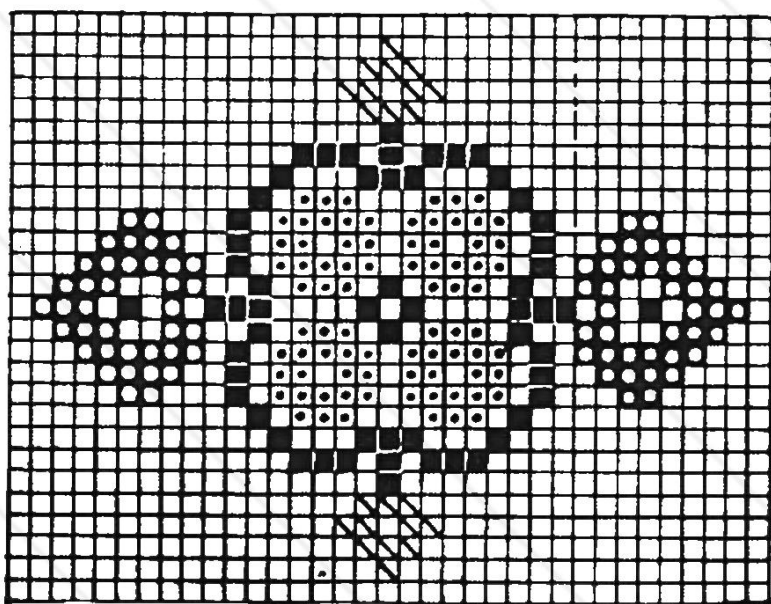
MATERIAL—Coats Mercerized Crochet No. 10. Two Shuttles. Four and Five small Rings.

Begin large r, shuttle No. 1, 9 ds, R st, shuttle No. 2, 9 ds, p, 2 ds, p, 9 ds, p, 9 ds, cl.

Begin small r, shuttle No. 1, 9 ds, p, 3 ds, R st, 9 ds, p, 3 ds, cl. Sl st, thread of shuttle No. 1 on thread of shuttle No. 2. Space one eighth inch. Shuttle No. 1, small r, 3 ds, join to first p of first small r, 9 ds, p, 9 ds, p, 3 ds, cl. Sl st thread to the thread between two last rs.

Third and fourth small r like second.

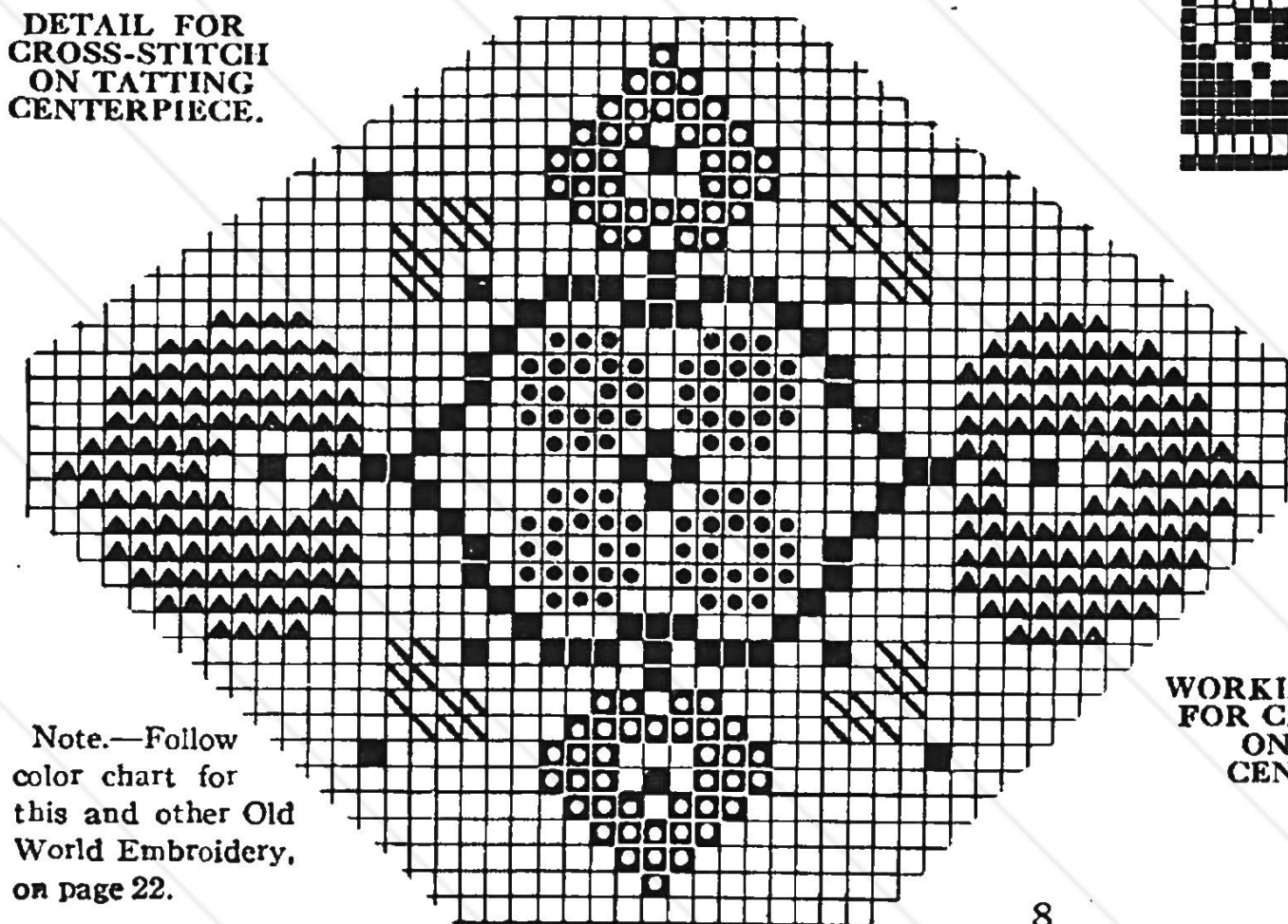
Fifth small r, Begin with shuttle No. 1. 3 ds, j to last small r, 9 ds, R st, shuttle No. 2. Sl st on thread between last two rs, 3 ds, j to first small r, 9 ds, cl. Second large r, 9 ds, j to last p of large r, 9 ds, p, 2 ds, p, 9 ds, R st, 9 ds, cl.



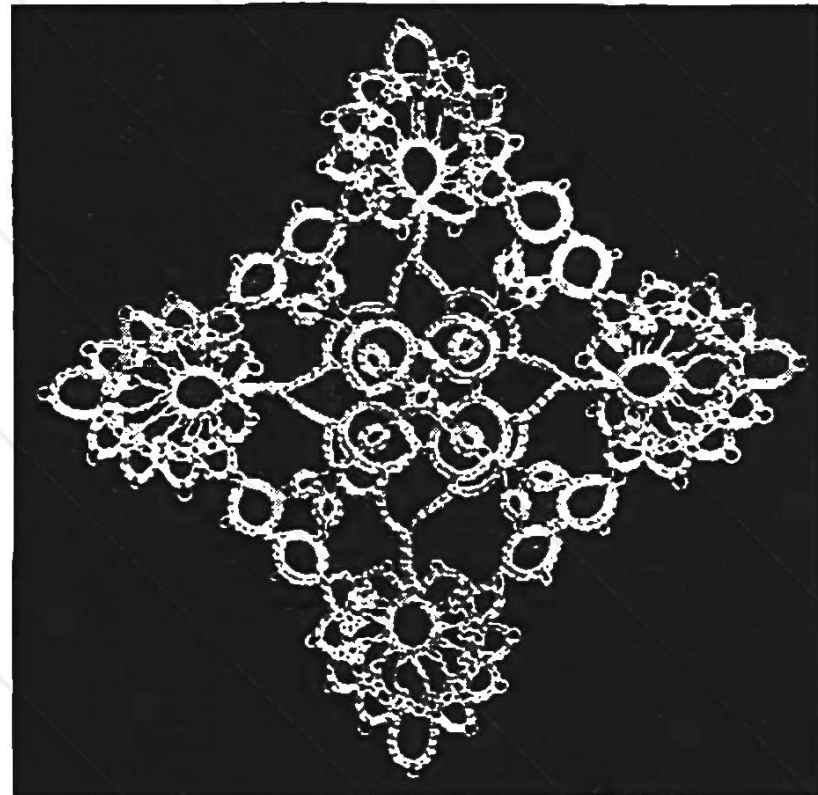
Third Large r, 9 ds, p, 9 ds, R st, 9 ds, p, 2 ds, p, 9 ds, cl.

Fourth large r like third.

DETAIL FOR CROSS-STITCH ON TATTING CENTERPIECE.



Note.—Follow color chart for this and other Old World Embroidery, on page 22.



DIRECTIONS FOR SQUARE MEDALLION IN LEAF DESIGN.

MATERIAL—Coats Mercerized Crochet No. 10. Two Shuttles.

The different parts of this pattern are designated as Center Medallion (C. M.) Stem, Leaf and Large and Small Connecting Ring. (Con R.)

Measure off ten yards of thread, wind on Shuttle No. 1. Do not break thread. Measure off ten yards more, wind on Shuttle No. 2.

CENTER MEDALLION

CENTER RING—2 ds, p, 2 ds, p, 2 ds, cl. Tie threads to take fourth picot. Do not cut threads. Begin lr, shuttle No. 1 5 ds, p, 5 ds, p, 5 ds, take work from hand. *Shuttle No. 2.

SMALL INNER RING

Space one eighth inch, 4 ds,

pass shuttle No. 1 under thread on hand to make joining, p, 4 ds, cl. Space one eighth inch. Join thread to center ring. R st, shuttle No. 2, 5 ds. Complete ring with shuttle No. 1, p, 5 ds, p, 5 ds, in ordinary st. cl. *Second 1 r, 5 ds, p, 5 ds, R st, 5 ds, join thread of shuttle to center ring.

Small inner ring like first, join thread to same picot of center ring. Complete ring like first, as indicated by * s.

Third L r like second.

Fourth L r like second, except after joining to center ring, complete ring in R st, 5 ds, join to picot of first L r, 5 ds, p, 5 ds, cl. Tie thread. Ch 5 ds, join thread to last p, of L r.

STEM—Ch 5 ds, space three eighths inch.

LEAF—Center ring of Leaf. Shuttle No. 1, 3 ds, five picots, separated by 2 ds, graduating from one fourth to three fourths inches. 1 ds, 5 ds, three fourths to one fourth inches, separated by 2 ds, 3 ds, cl. Ch 3, p, ch 3, sr, 2 ds, join to last p of center ring, 1 ds, p, 1 ds, cl. Ch 3 ds; p, 3 ds, sr, 1 ds, join to last r, 1 ds, join to next p of center ring. Twist p, before joining, 1 ds, p, 1 ds, cl.

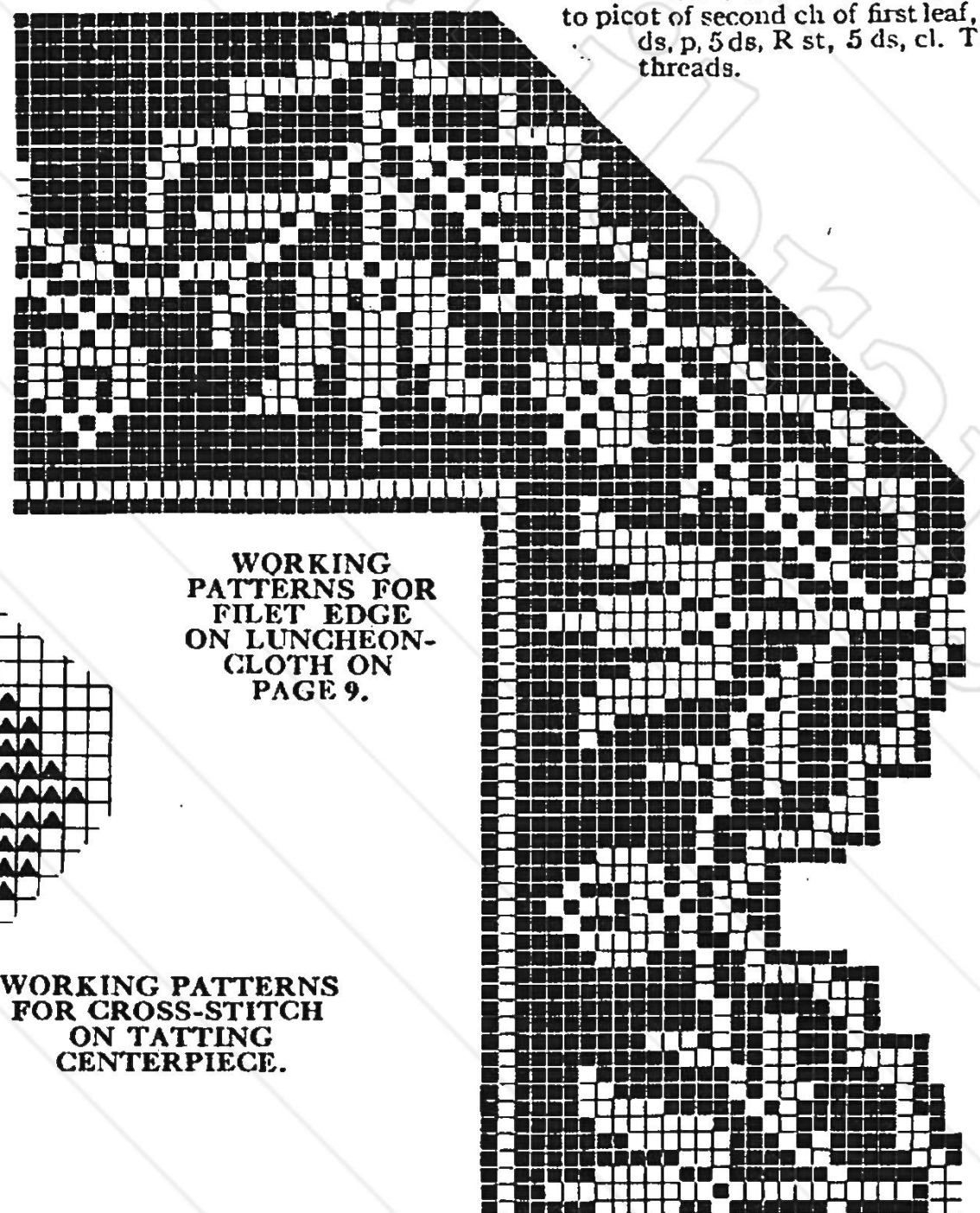
Continue until there are five chains, and five rings, twisting picots once twice or three times, according to length from right to left on one side of leaf, and from left to right on other side. Ch 6 ds, p, 6 ds, for point of leaf. Continue on other side, making five rings and five chains.

Make large Con. R. in place of picot in second last chain with shuttle No. 2. (Lr, Con. R, 5 ds, p, 5 ds, p, 5 ds, p, 5 ds, cl.)

Tie threads to center ring, with a crochet needle, make five stitches around the three threads for stem, and tie. Continue stem, chain 5 ds, join thread to first p of next lr of center medallion. Ch 5 ds, join to next p of center medallion with shuttle No. 2 sr, 4 ds, join to last p of Con. R, 4 ds, cl.

SECOND CON—R, 4 ds, p, 4 ds, cl. Ch 5 ds, join to next p of L r. Make three more like first leaf, but in place of picot in second chain, make large Con. R. Join to second small Con. R, and to Large Con. R, on first leaf. Begin last small Con. R. with shuttle No. 2, 4 ds, R st, shuttle No. 1, 4 ds, cl.

LARGE CON. RING—5 ds, join to picot of second ch of first leaf, 5 ds, p, 5 ds, R st, 5 ds, cl. Tie threads.



WORKING PATTERNS FOR FILET EDGE ON LUNCHEON-CLOTH ON PAGE 9.

WORKING PATTERNS FOR CROSS-STITCH ON TATTING CENTERPIECE.

Where Filet and Cross-Stitch Meet

DIRECTIONS FOR SQUARE CENTERPIECE.

Filet, crochet, cross-stitch in peasant embroidery and hand hemstitched.

MATERIALS—Coats Mercerized Crochet No. 100. No. 14 Hook.

MEDALLION.

Start at one edge, working crosswise.

Ch. 149.

1st Row—48 sp.

2nd Row—1 sp, 46 bl, 1 sp.

3rd Row, 4th, 5th and 6th rows—1 sp, 1 bl, 44sp, 1 bl, 1 sp.

7th Row—Start leaf and stem of design and continue to follow.

EDGE

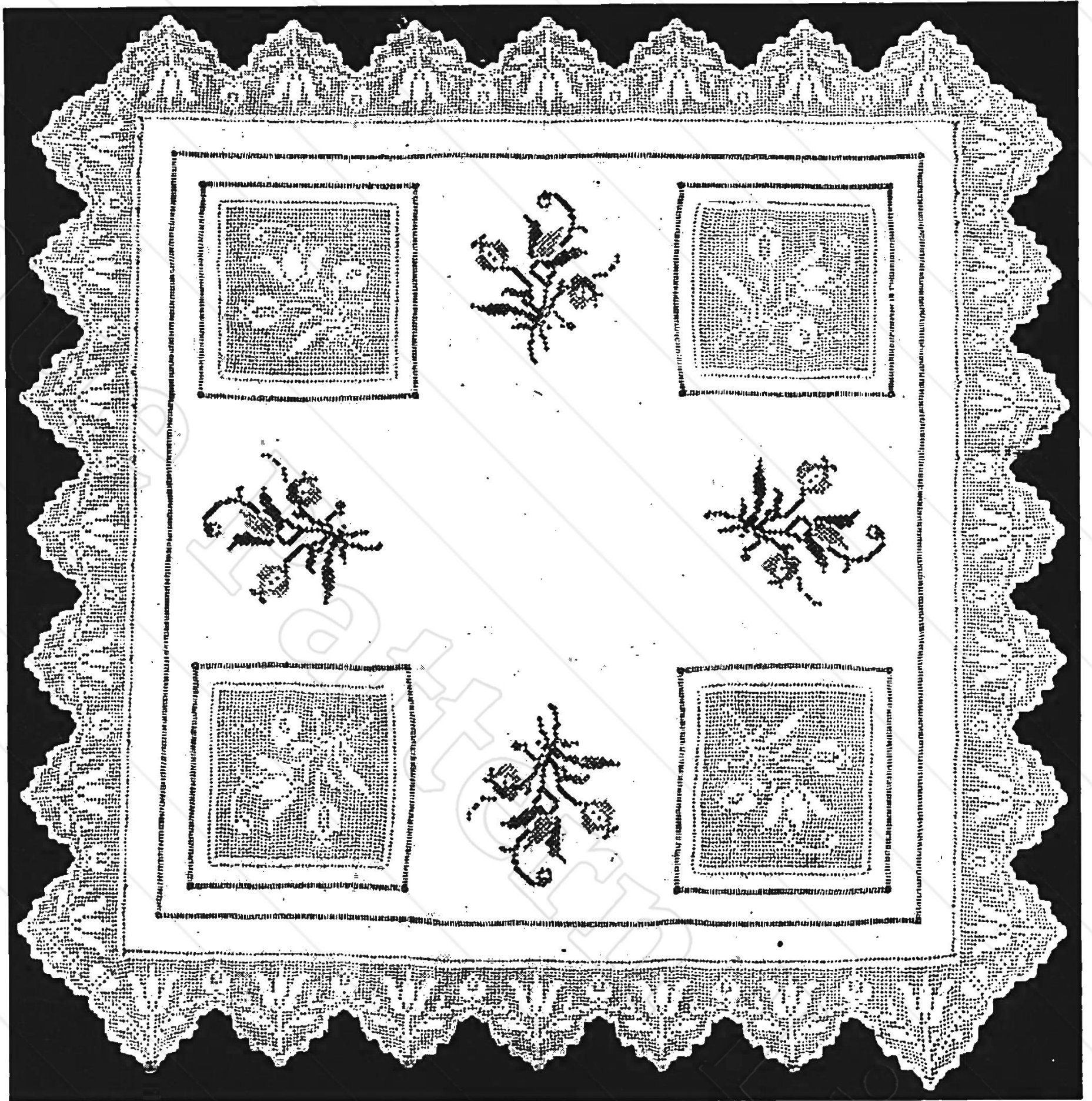
Start at narrowest part, working crosswise.

Ch. 50.

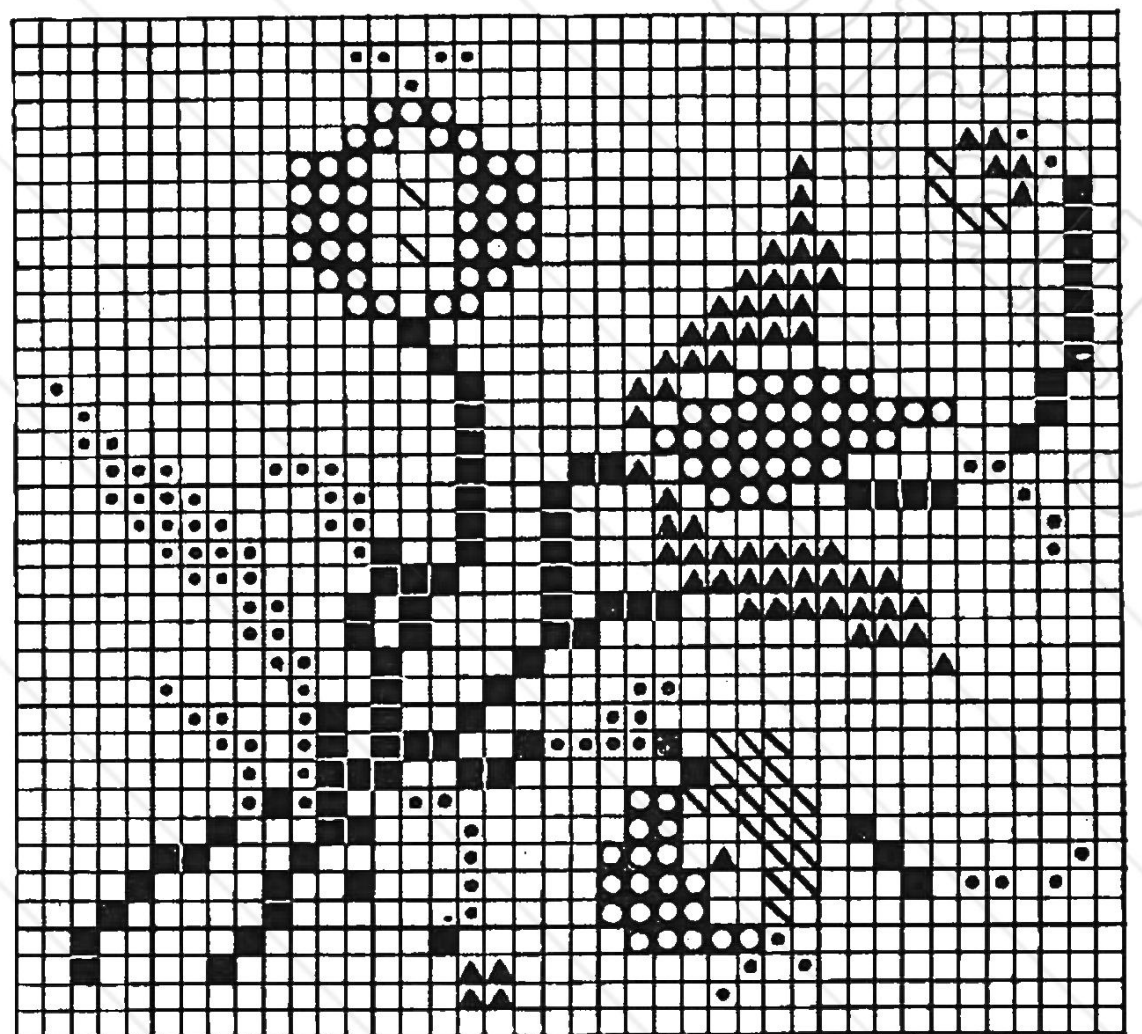
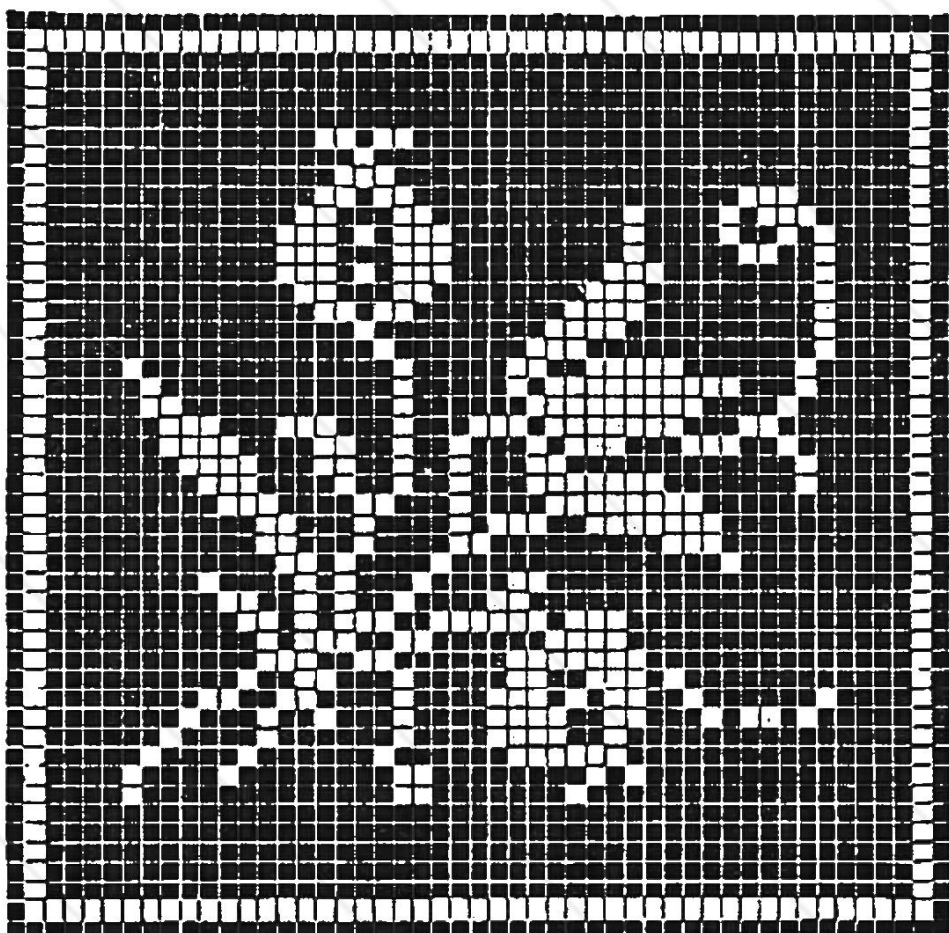
1st Row—1 sp, 1 bl, 2 sp, 1 bl, 1 sp, 2 bl, 1 sp, 1 bl, 1 sp, 1 bl, 2 sp, 1 bl.

2nd Row—Add 1 bl at first side and continue to follow design, adding blocks at lower edge to form scallops. After one side and across corner if completed it will be necessary to break cotton and start on the side of corner and work the next side. Hem around edge and hem around medallion are hemstitched by hand.

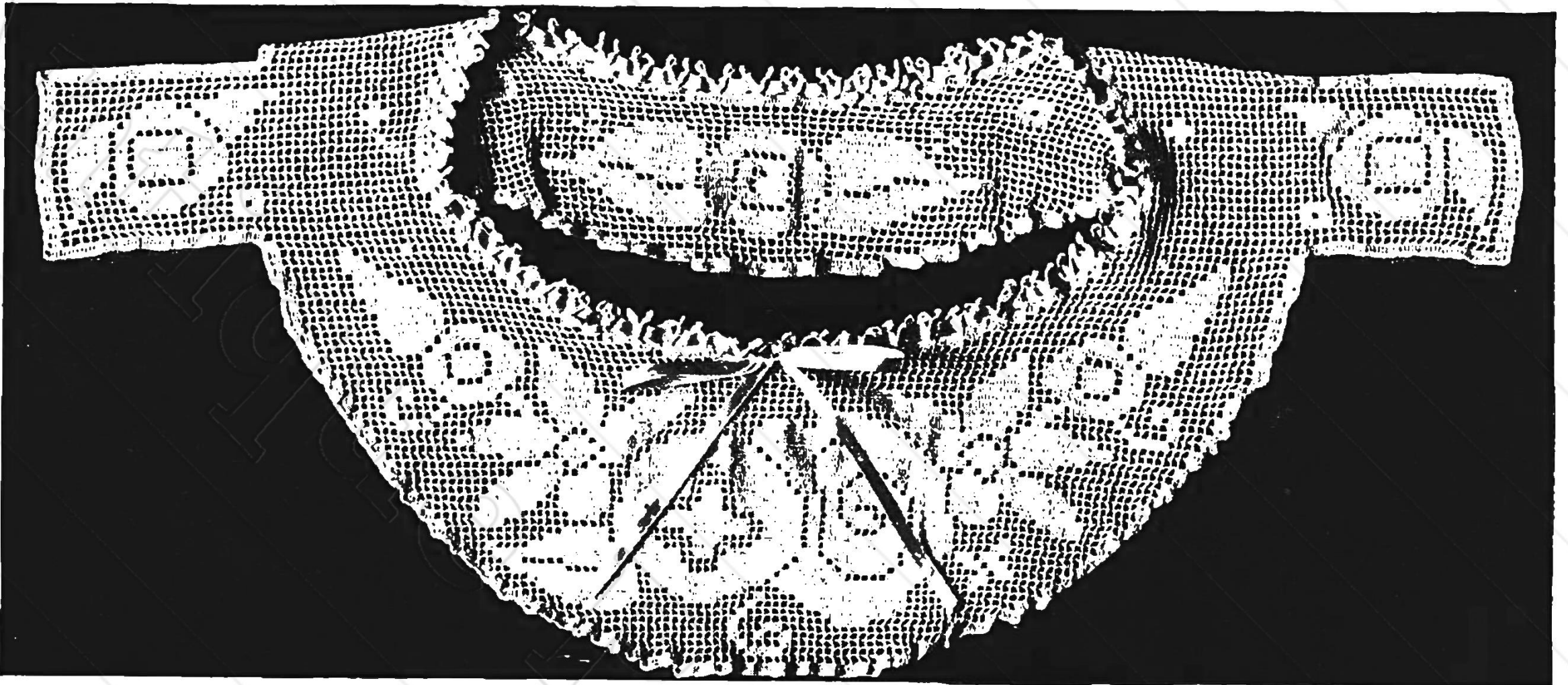
CROSS-STITCH—Make on canvas 8 meshes to the inch with six strand floss, using the whole 6 strands, 1 skein each of Black, Dk. Moss Green 69, Lk. Yellow 43, China Blue 76, Lt. Red 6. For this O'd World Embroidery follow color chart on page 22.



WORKING PATTERNS FOR FILET AND CROSS-STITCH SHOWN ABOVE.



A New and Attractive Gown Yoke



DIRECTIONS AND WORKING PATTERNS FOR YOKE

This round neck gown yoke is very becoming, unusual in design, quickly worked and easily followed.

YOKE

MATERIALS—Coats Mercerized Crochet No. 70. No. 12 Hook.

Start at lower edge of front, working crosswise.
Ch. 72.

1st Row—23 bl.

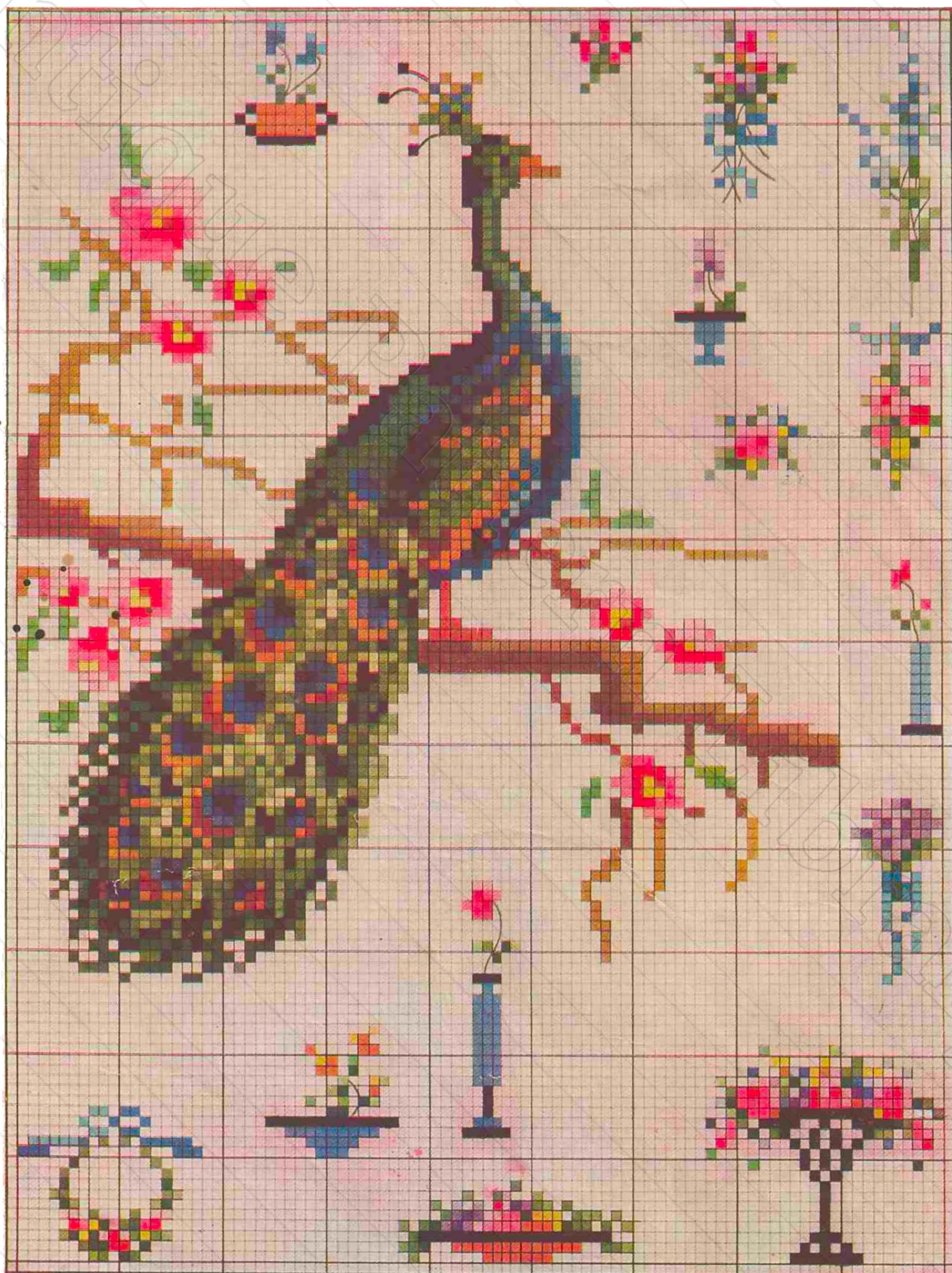
2nd Row—Add 4 bl at each end, follow design, continue to add bl at each end to form scallop. After 40 rows are made leave off the 15 center meshes and all on one side, and with those on the other side work up over the shoulder, adding meshes to continue the scallop and to form tab on shoulder as shown in design. When the back of neck is reached, break cotton and make second shoulder, like the first one. Join the two shoulders with a chain of 45. Work all across, making back like design.

DIRECTIONS FOR EDGE AROUND NECK

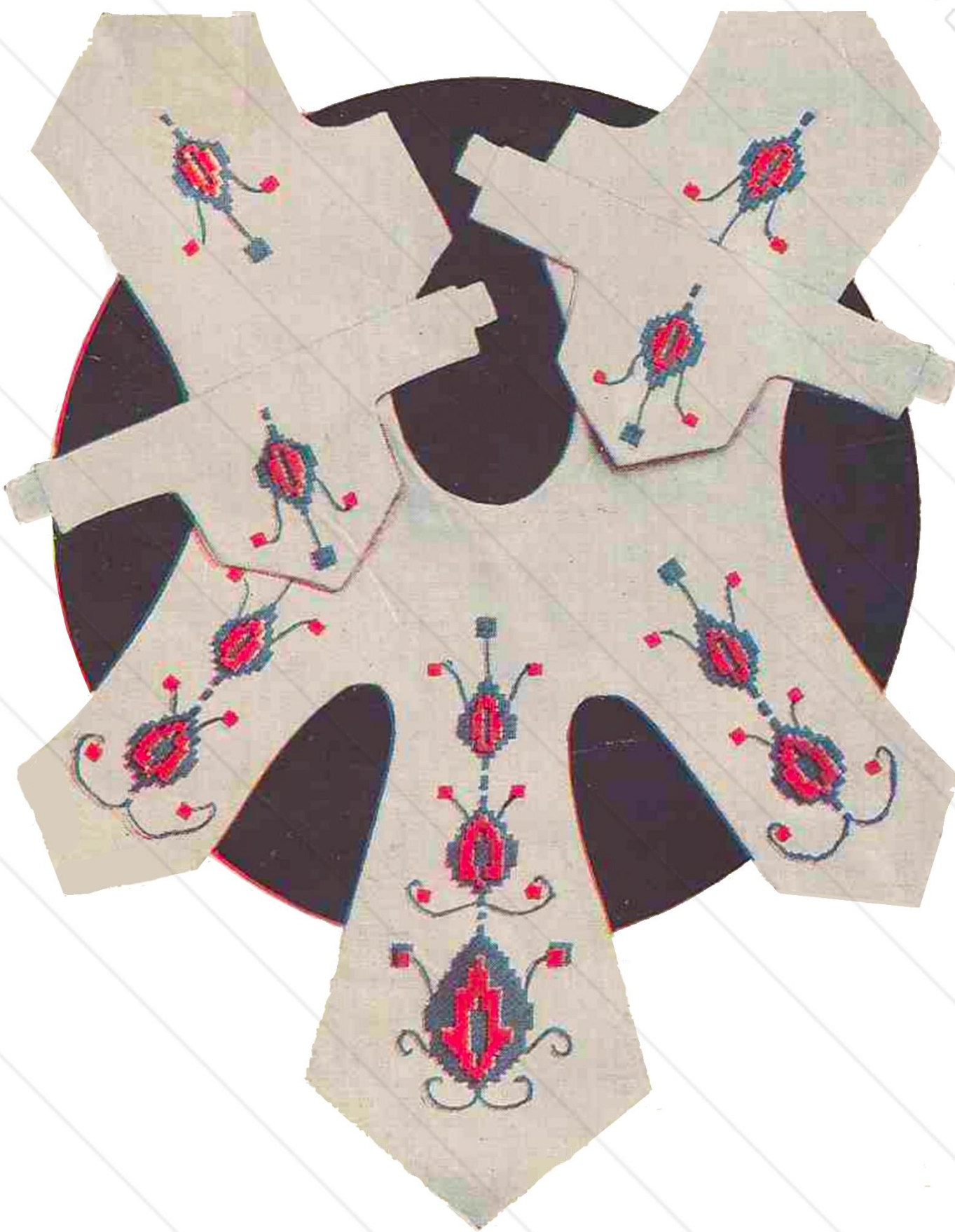
1st Row—Start in bl, * ch 18, 1 sl st 12th st from hook to form loop, ch 6, 1 sl st in 2nd bl, repeat from *.

2nd Row—* 6 s st in first part of ch 18, 10 s st in loop of ch, 6 s st ch 6, 1 sl st in sl st of 1st row, repeat from *.

Colored Cross-Stitch Patterns



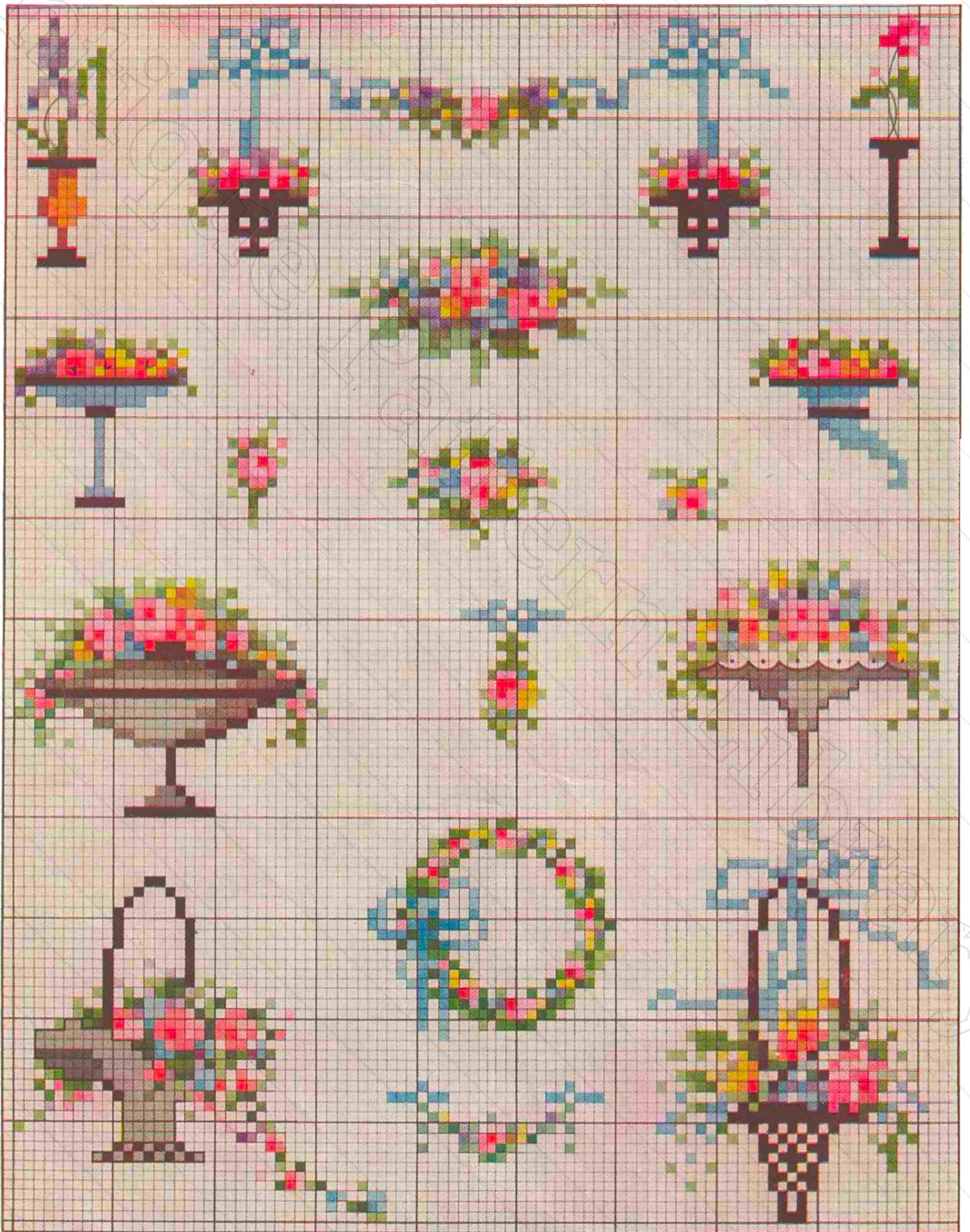
Beautiful Articles



Illustrating Patterns



Colored Cross-Stitch Patterns



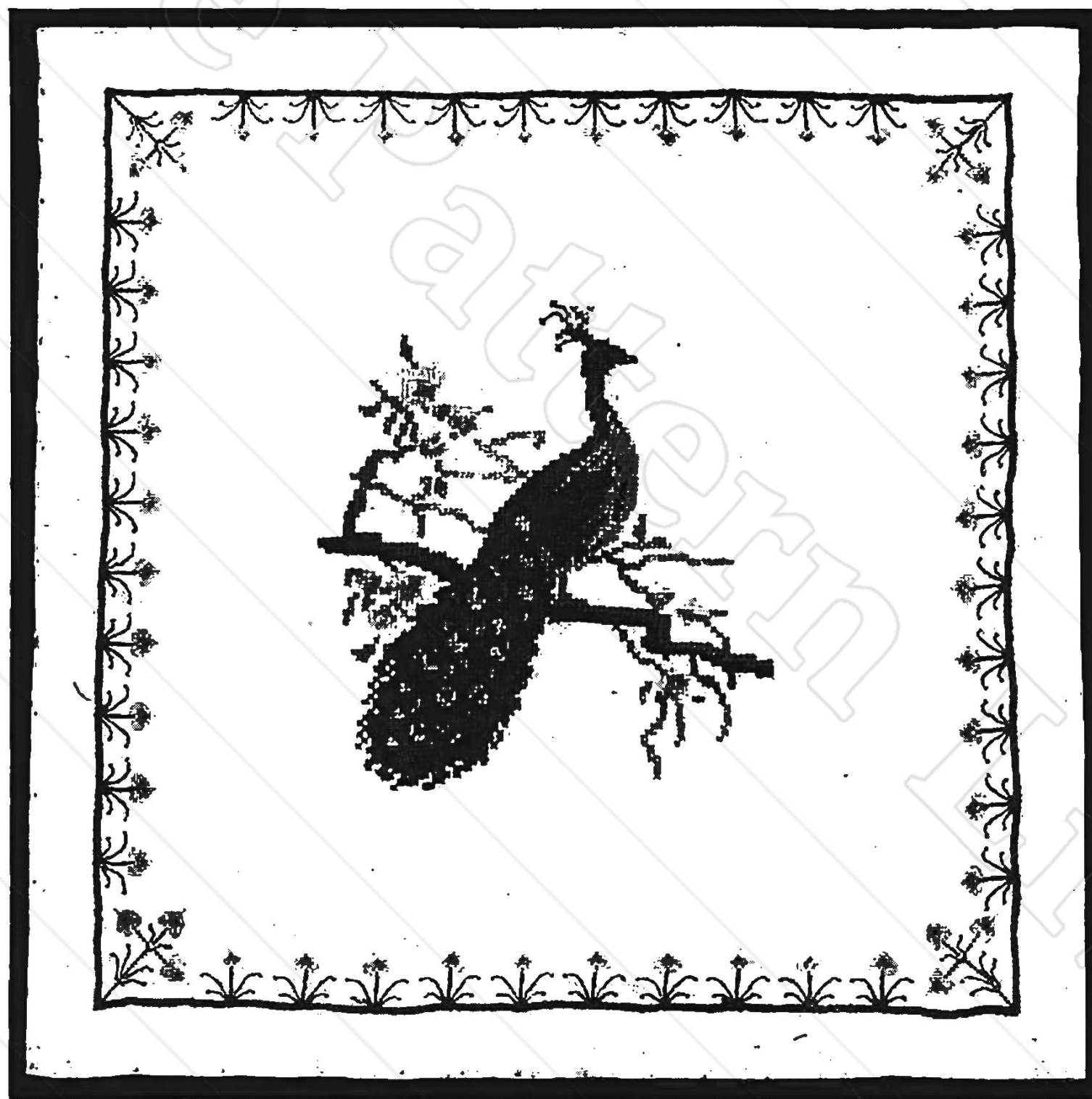
Peacock Bridge Cable Cover

This unusual decoration of a bridge table cover is most beautiful in color, as the design for the pattern on page 11 will show. Having the embroidery in center of material is but another new idea for the needleworker.

The cover should fit your bridge table cover. It is made of a heavy oyster colored Art linen and carries a two-inch hem, which is held down by one or two rows of cross-stitch in black. The design for the border, in peacock feathers, is worked in Steel Blue 108, Moss Green 5, and Black 12, and the working chart for distributing these colors can be found on page 22, showing the marking for these three colors, though of different tones in the threads. The peacock is worked in Light Steel Blue 69, Delft Blue 22, Steel Blue 108, Moss Green 5, Dk. Moss Green 60, Dk. Willow Green 109, Light Yellow 56, Yellow 9, Dk. Yellow 43, Brown 52, Black 12, and the foot and bill worked with Lt. Crimson 118.

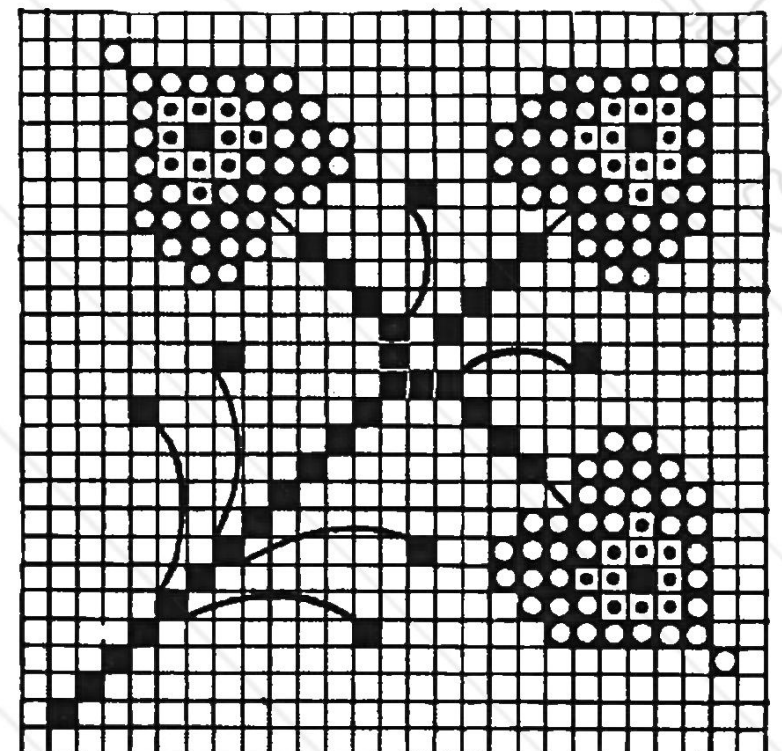
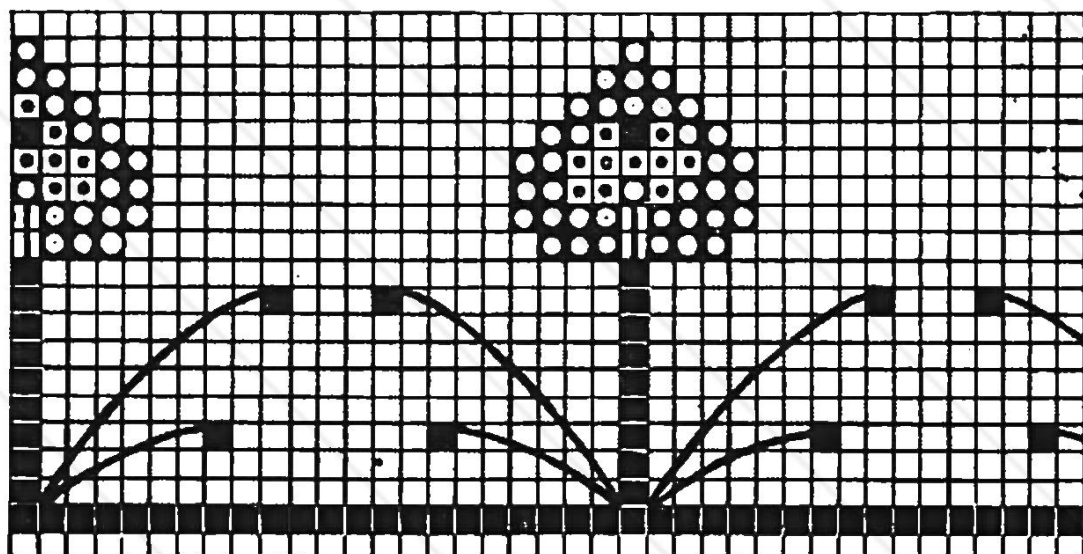
The branch of tree on which he is standing is worked with Lt. Golden Brown 50, and Brown 52. The cherry blossoms on the tree behind the peacock are worked with Light Rose 67, Rose 46 and Dk. Rose 59, Centers of Lt. Yellow 56 and Dk. Yellow 43. Distribute your colors by the colored working pattern on page 11.

*If you want
a very handsome
table cover,
try working out
this
wonderful
Peacock*



*The most
unusual design
offered the
needleworker
this year.
Lovely for a
Hope-Chest*

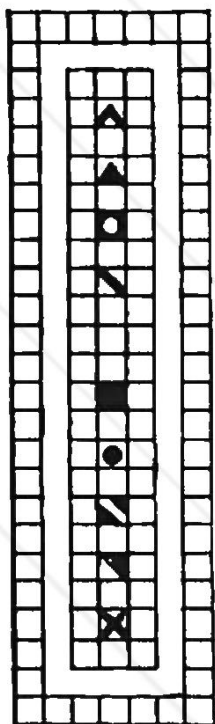
WORKING PATTERNS FOR BORDER



Springtime Centerpiece in Jonquils

DIRECTIONS FOR CROSS-STITCH

The rich colors of the Jonquil are selected for you by following the list of Coats Six Strand Floss mentioned below by the color chart, the working pattern of which is easy to follow. It is unusual in shape, which is made by placing the 8 filet medallions evenly spaced on a circle, and then drawing a line and making a point two inches deep between them, and having machine hemstitched, then following the crochet directions.



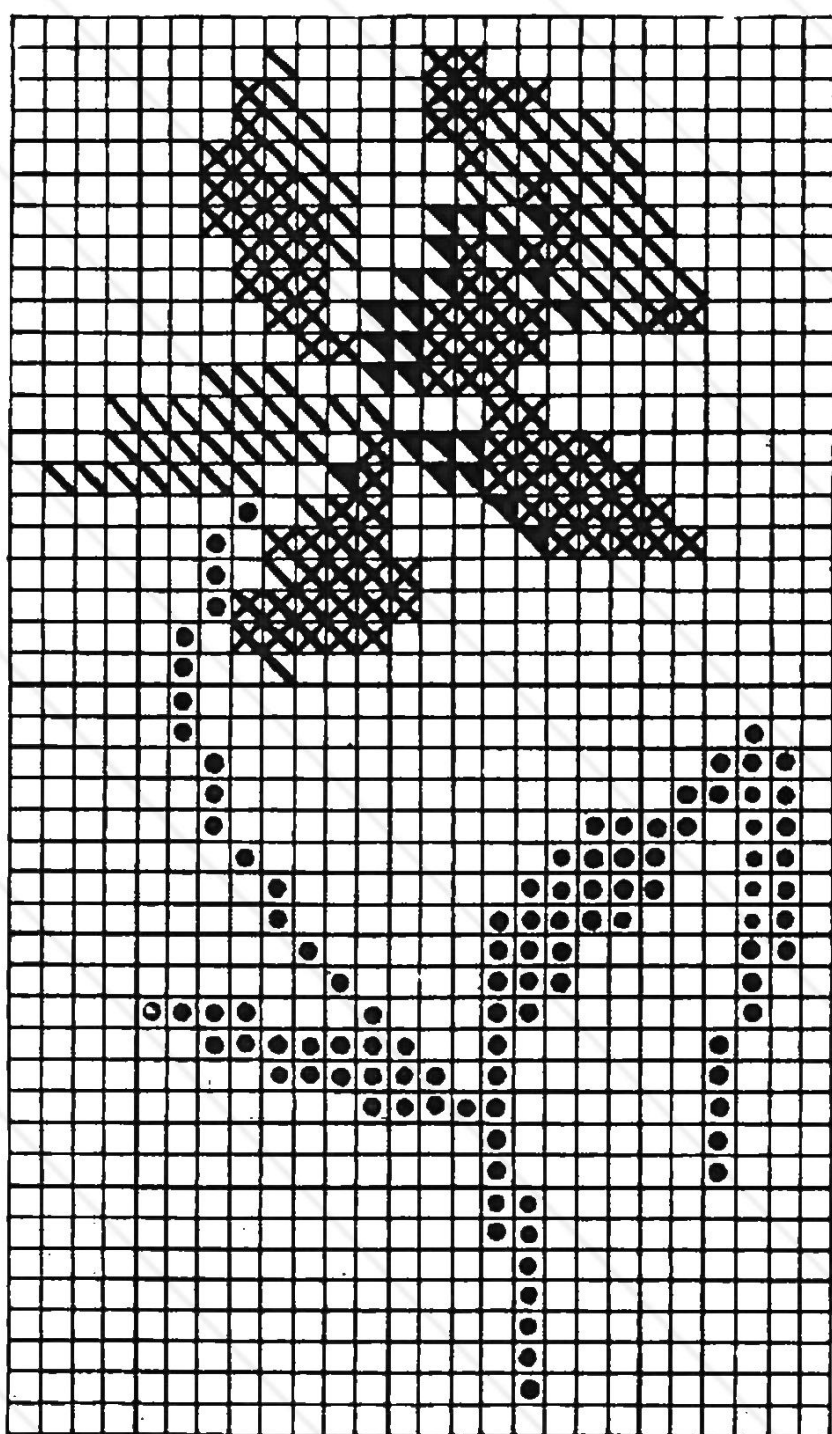
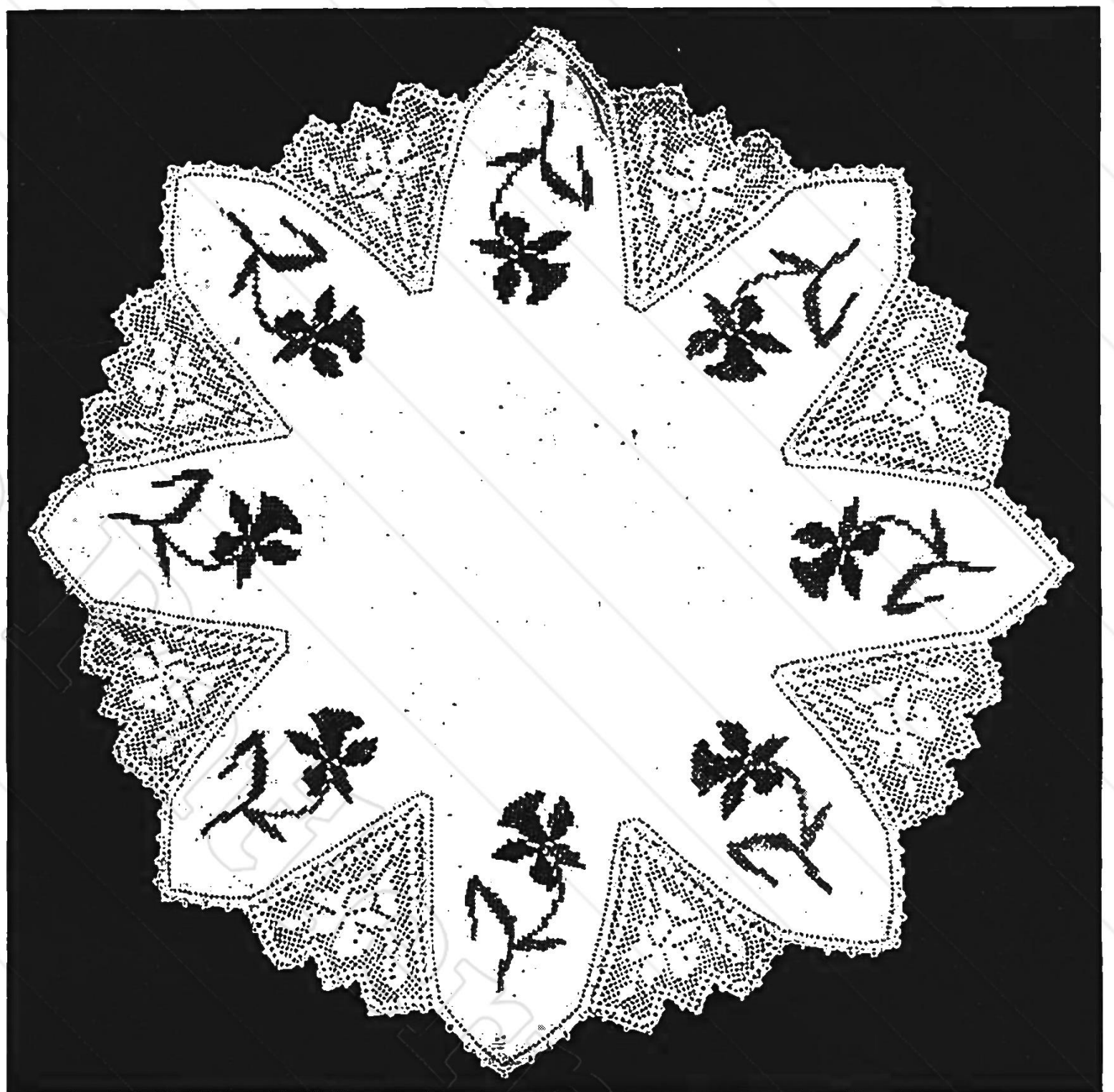
DK. YELLOW 43

DK. MOSS GREEN 60

GOLDEN BROWN 51

ORANGE 11

COLOR CHART



WORKING PATTERN FOR CROSS-STITCH

The charm of this piece is in the fact that both crochet and embroidery carry the same flower in design and also in the grace given it.

DIRECTIONS FOR FILET IN CENTERPIECE.

MATERIALS—Coats Mercerized Crochet No. 60. No. 12 Hook.

INSET

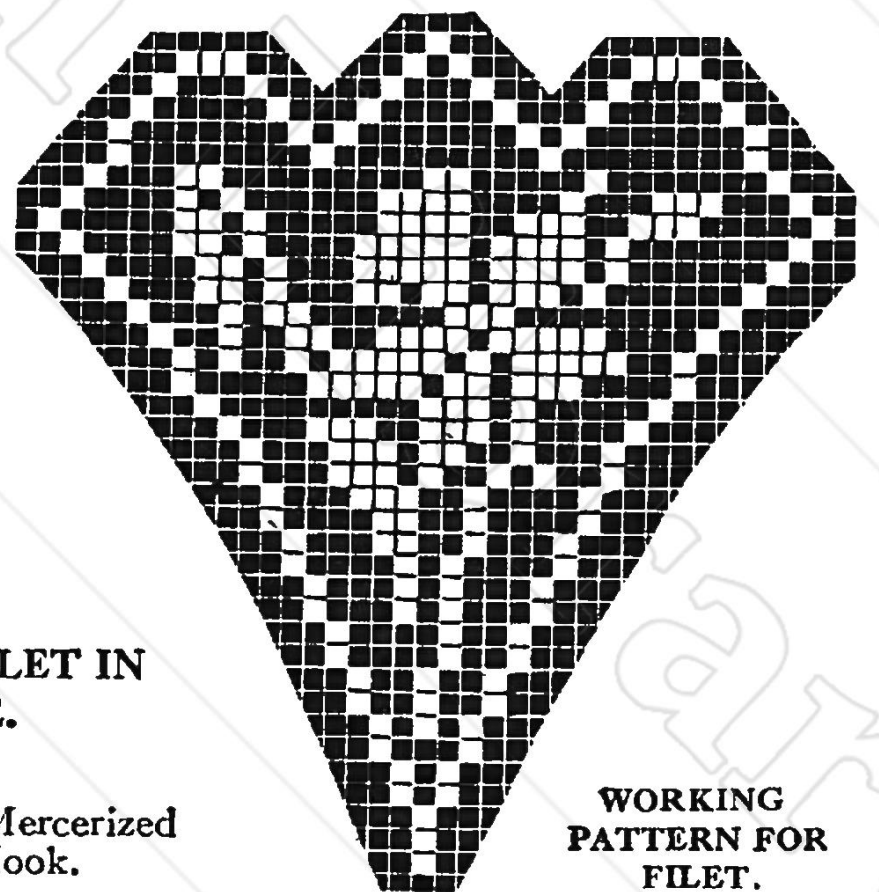
Start at small end, working crosswise.

Ch 14.

1st Row—3 sp.

2nd 3rd and 4th Rows—1 sp, 1 bl, 1 sp.

5th Row—Add 1 sp at each end, and continue to add sp at each end, as shown in working plate, to form the shape. Make 8 insets and cut linen to fit them. Have it machine hemstitched. Cut linen $\frac{1}{8}$ inch outside of hemstitching, crochet all around, 1 s st in each hole of hemstitching, sew in the insets, crochet edge all around, as follows: 1 s st in s st, ch 3, 1 s st in 2nd s st, * 1 p, ch 3, 1 s st in 2nd s st, ch 3, 1 s st in 2nd s st, repeat from *.



WORKING PATTERN FOR FILET.

Between-Meal-Cloths, Tatting and Crochet

Directions for Tatting Edge on page 8—Cross-stitch Pattern on page 14

DIRECTIONS FOR FILET BORDER.

MATERIALS—
Coats Mercerized Crochet No. 30.
No. 10 Hook.

Start at corner, working crosswise.
Ch. 60.

1st Row—19 sl.

2nd Row—1 sp, 18 bl.

3rd Row—17 sp, 1 bl, 1 sp.

Continue following design until 47 rows are finished, then add 14 meshes st each end to make the large medallion with the design of a bowl of fruit. Make the 4 sides alike.

EDGE ALL AROUND

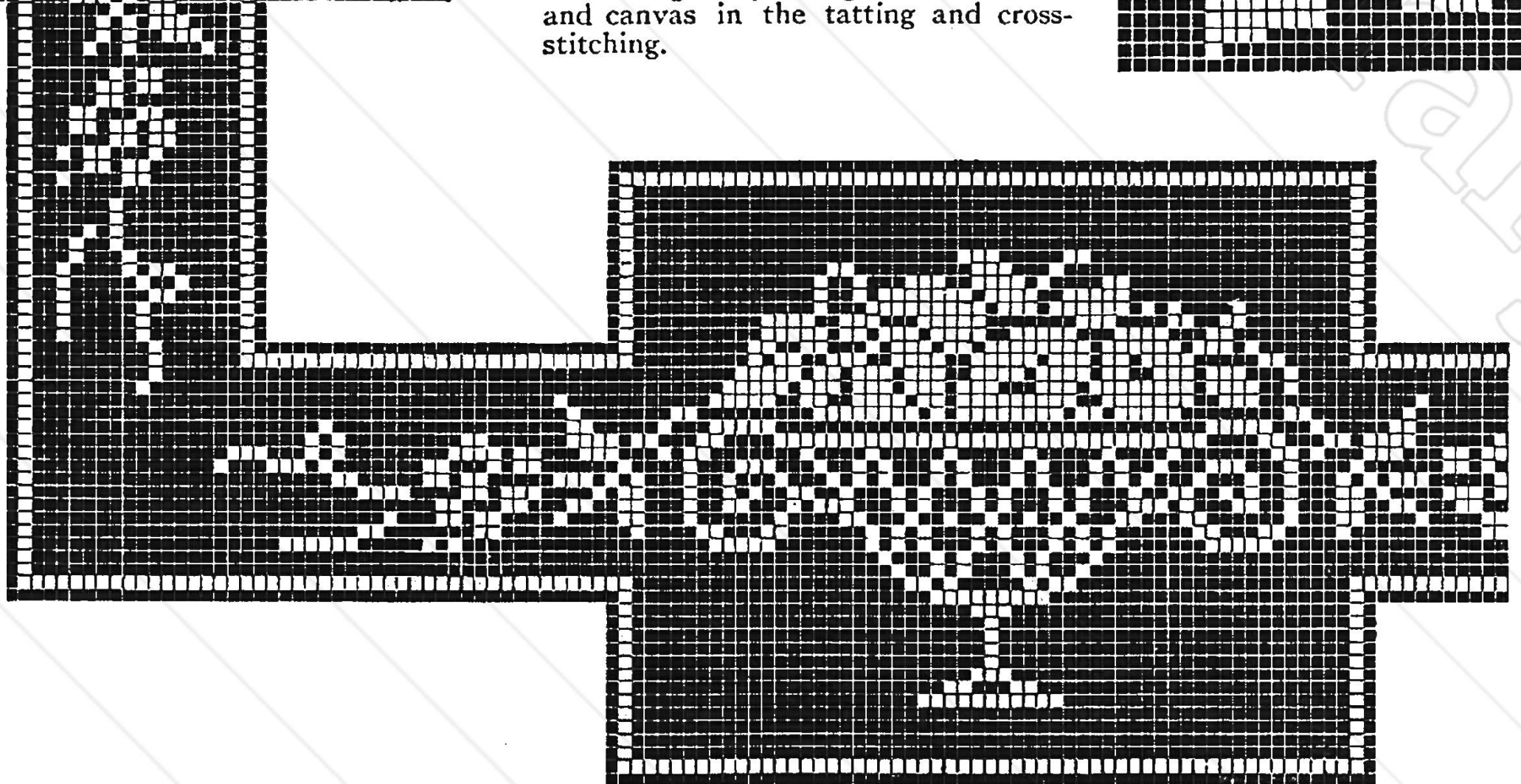
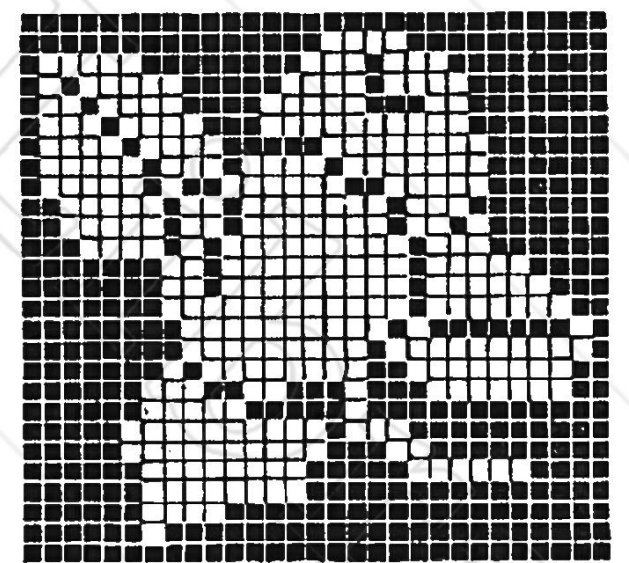
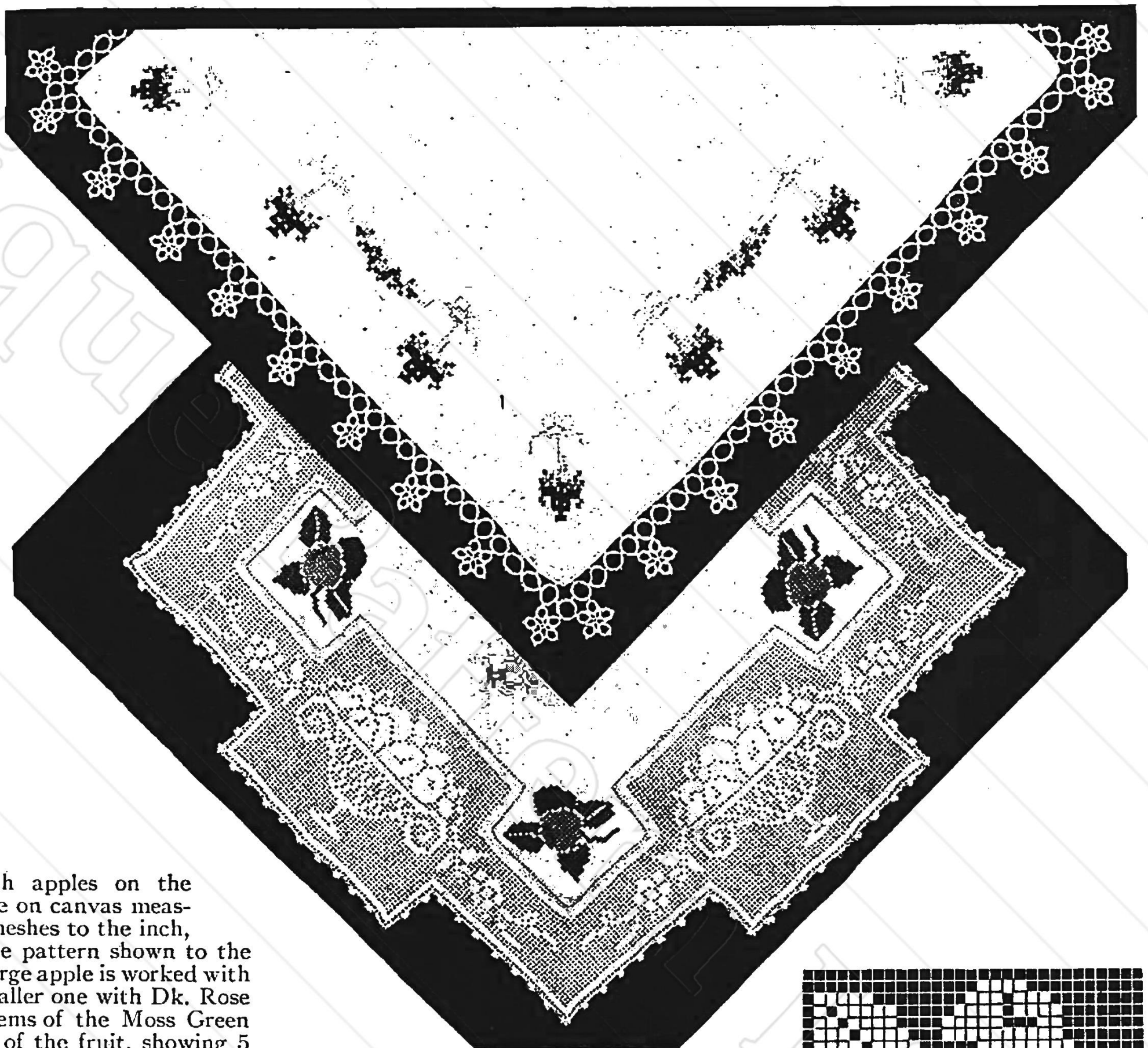
Start in sp * ch 4, 1 sl st in 2nd sp, ch 4, 1 sl st in 2nd sp, ch 4, 1 sl st in 2nd sp, ch 7, 1 sl st in same sp, ch 7, 1 sl st in same sp, ch 7, 1 sl st in same sp, repeat from *.

The Cross-stitch apples on the Filet Cloth are made on canvas measuring either 8 or 9 meshes to the inch, and worked from the pattern shown to the right of page. The large apple is worked with Rose 46, and the smaller one with Dk. Rose 59; the leaves and stems of the Moss Green 5, while the centers of the fruit, showing 5 meshes, are worked with black.

DIRECTIONS FOR CROSS-STITCH.

The cross-stitch on the tatted piece is made from the colored cross-stitch designs, and one has only to match up Coats Six Strand Floss, with these designs, to make it.

It measures 22 in. sq. but can be made larger by using coarser thread and canvas in the tatting and cross-stitching.



Luncheon Set from Colored Cross-stitch Patterns

DIRECTIONS.

This Luncheon Set is arranged for either four or six plates, and is most attractive. It is easily worked by first matching up your colors from the colored patterns shown on page 14, and is worked with 4 strands of Coats Six Strand Floss over a canvas measuring 10 squares to the inch. After the work is completed, pull the canvas thread from underneath the floss. It is simply used for guidance and regularity of stitches.

The ends of the runner are used for plate and silver, at head and foot of the table, and the doilies on either side.

LUNCHEON SET CROSS-STITCH BASKET.

MATERIALS—Center piece cut linen $1\frac{1}{2}$ yds. long and 16 in. wide. 54 inch table. 2 doilies 10x16 inches, 4 napkins each 12x12 inches.

Coats Mercerized Crochet No. 50. No. 10 Hook.

Have each piece machine hemstitched.

EDGE AROUND EACH PIECE.

1st Row—* 1 s st in each stitch of hemstitching for 5 st, 1 p. repeat from *.

2nd Row—Start half way between 2 picots, * ch 7, 1 sl st half way between next 2 picots, repeat from *.

3rd Row—* 5 s st in ch 7, 1 p, 5 s st in same ch, 1 sl st in sl st of last row, repeat from *.

DIRECTIONS FOR TRAY COVER AND NAPKIN FOR THE TINY TOT.

Tray cover should be of a heavy cotton material, measuring 12 x 18 inches, and the napkins should be 12 in. square. Same crocheted border, and the ducks of different design, as shown. Make edge as follows:

MATERIALS—Coats Pearl Cotton No. 5. No. 5 Hook.

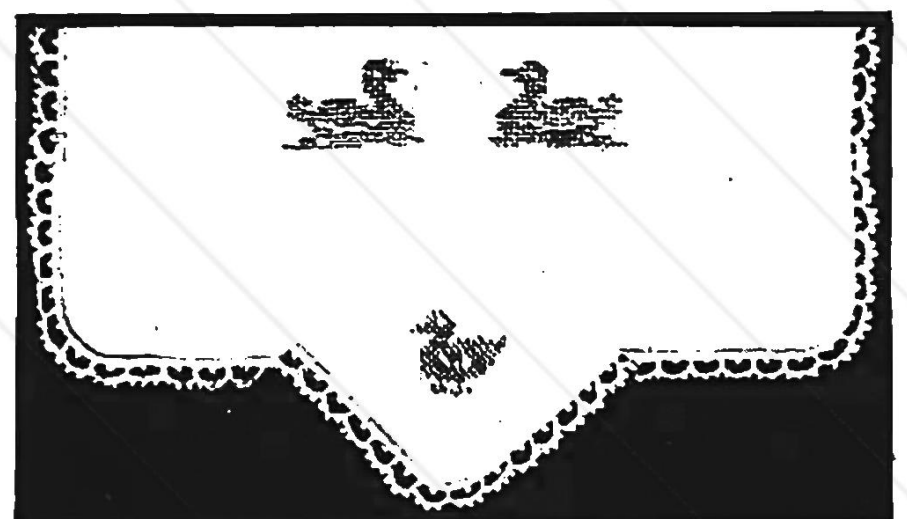
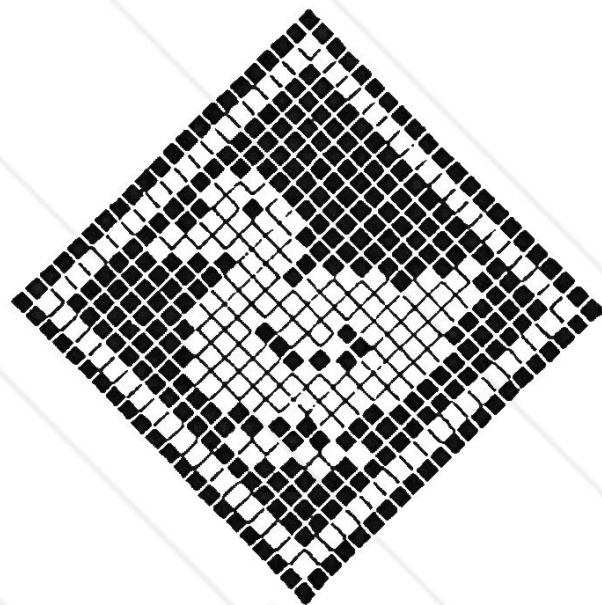
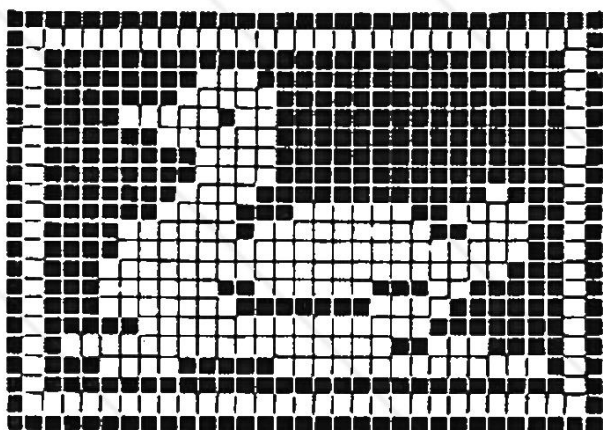
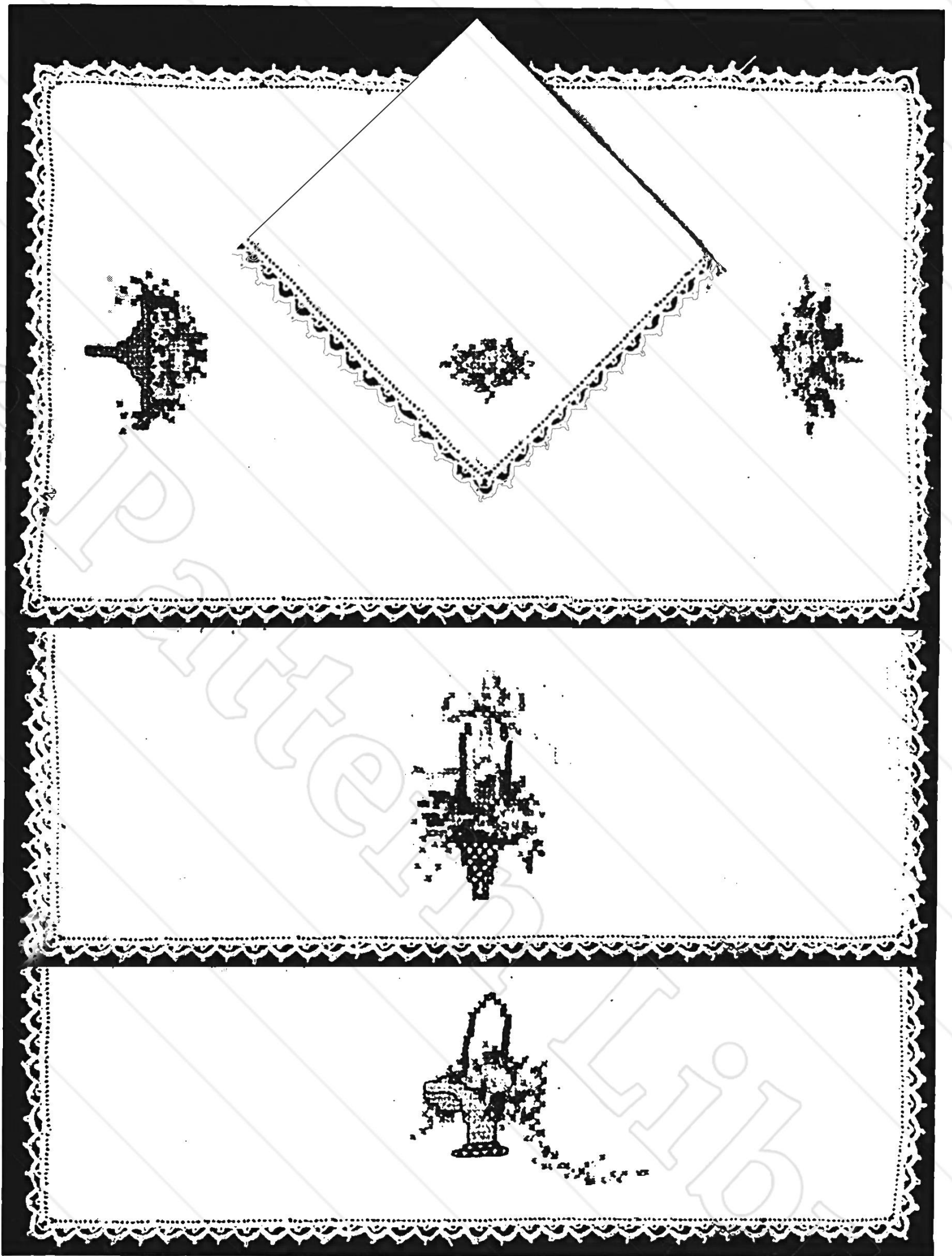
Turn edge of linen in about $\frac{1}{8}$ inch wide.

1st Row—Make s st close together, taking in over the hem, making 1 p after each 10 st.

2nd Row—Start midway between tr p, ch 12, 1 sl st in first row half way between next 2 p, * turn, cover first three st of ch 12 with 3 s st, ch 12, 1 sl st between next 2 p, repeat from *.

3rd Row—* 3 s st around ch 12, 1 p, 3 s st around same ch, 1 p, 3 s st around same ch, 1 p, 3 s st around same ch; this should cover all of that ch; repeat from *.

Then cross-stitch from duck designs below, in Delft Blue 22, with six strands of floss over canvas measuring 8 squares to the inch.



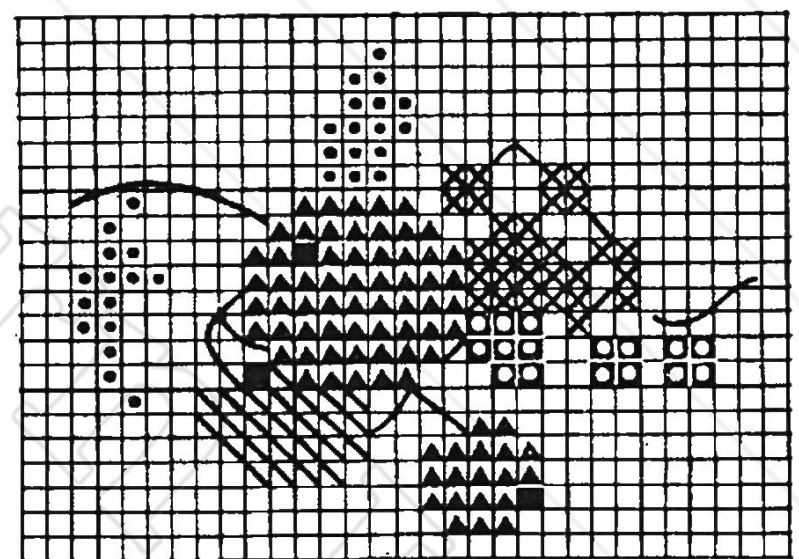
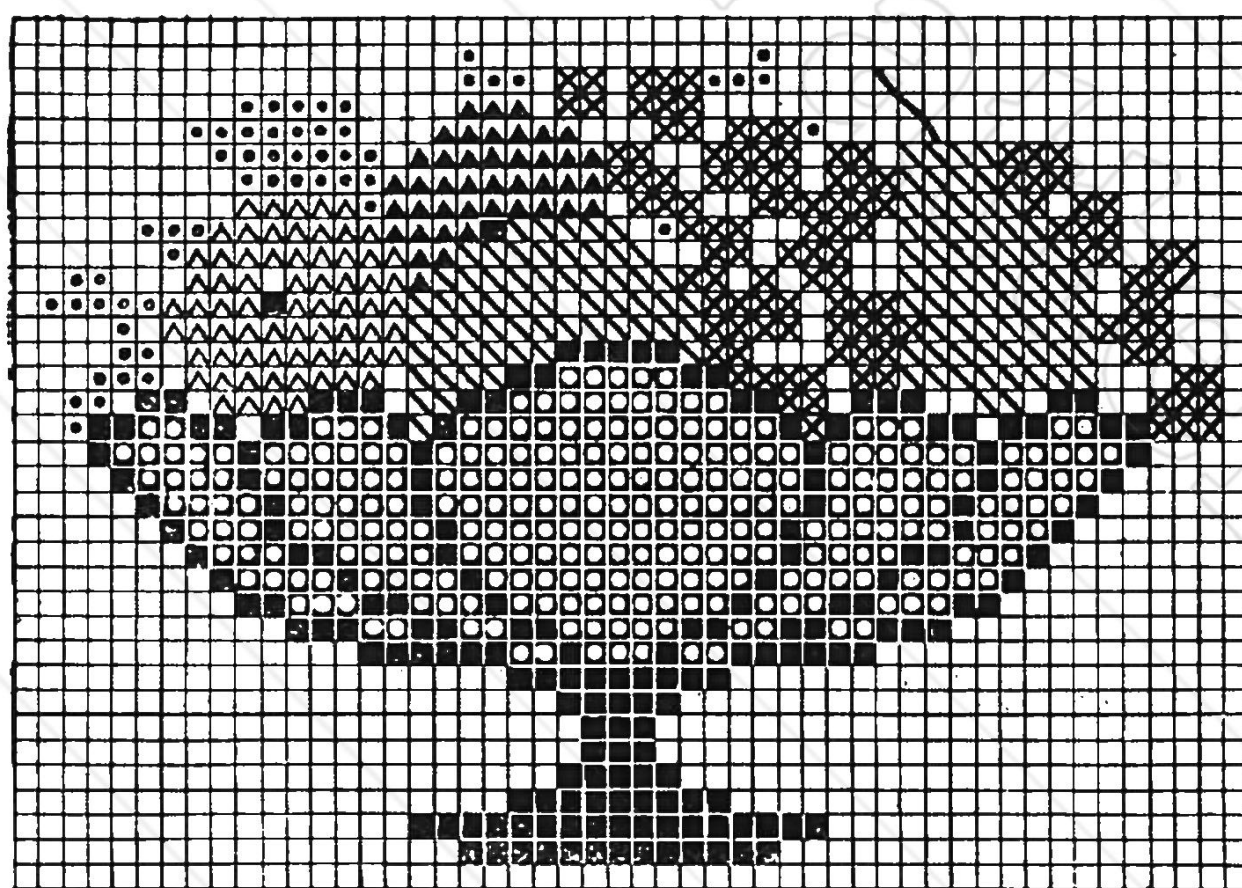
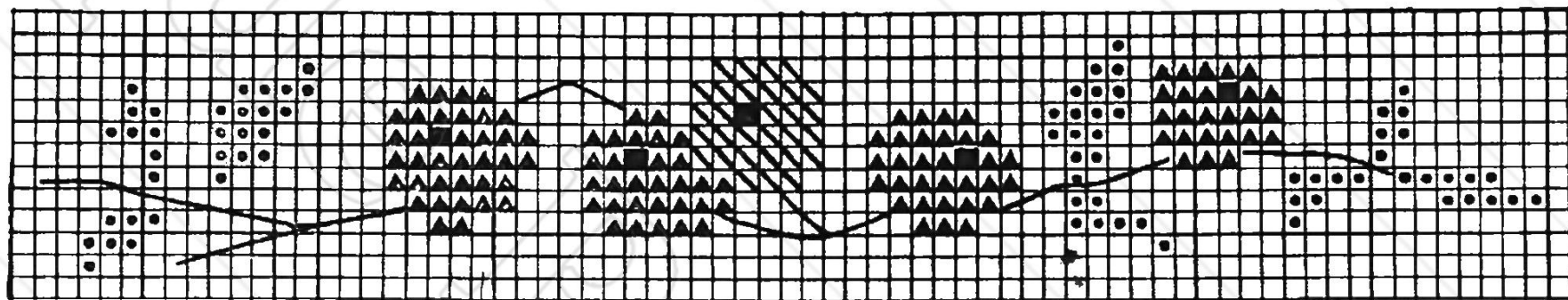
Description of Articles on Center Colored Pages

DIRECTIONS FOR SEWING APRON.

The sewing apron to the upper left of page is made of white organdie, machine hemstitched all around apron, pockets and ruffles, and the pink organdie ruffles whipped on. Then the hemstitching is cut on outer edge of ruffles to make a picot finish.

The cross-stitch wreaths are made by following the colored designs on page 14.

The Boarding-School-Girl's Afternoon Tea Set

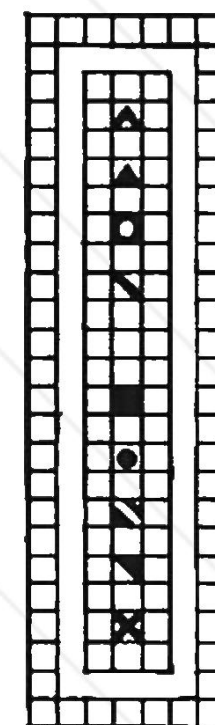


WORKING PATTERN FOR CROSS-STITCH ON AFTERNOON TEA SET.

DIRECTIONS FOR AFTERNOON TEA SET.

This set is composed of an apron, a tea cloth a yard wide, and four napkins 12 in. square, made of white beach cloth, linene or linen. It is machine hemstitched in Steel Blue 108, about 1 or 1½ inches from edge, and when the embroidery is finished, the threads are pulled from the hemstitching to form a fringe. The patterns for the cross-stitching appropriately designed in fruit, are found on this page and are easily and quickly followed, because the fruit is in flat colors, and while effective and less work, is not the needle-pointing that one can make with more care from the colored plates.

For tea cloth use canvas 8 sq. to in. For napkins and aprons use 10 sq. to in.



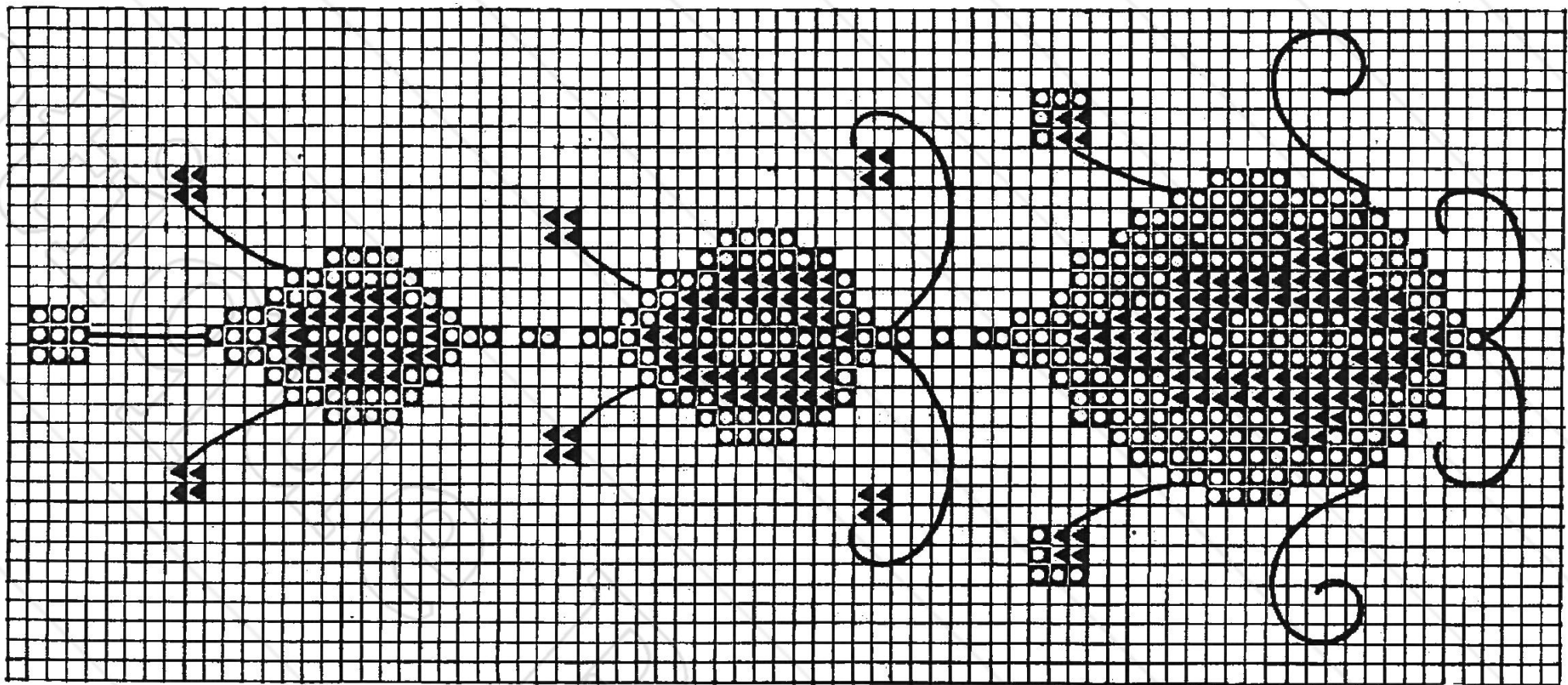
- CRIMSON 120
- LT. RED 6
- STEEL BLUE 108
- YELLOW 9
- WHITE 1
- BLACK 12
- DK. MOSS. GREEN 60
- PURPLE 32

COLOR CHART FOR TEA SET.

COLLAR AND CUFF SET AT UPPER RIGHT OF PAGE.

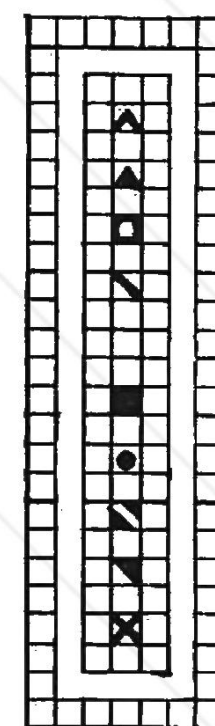
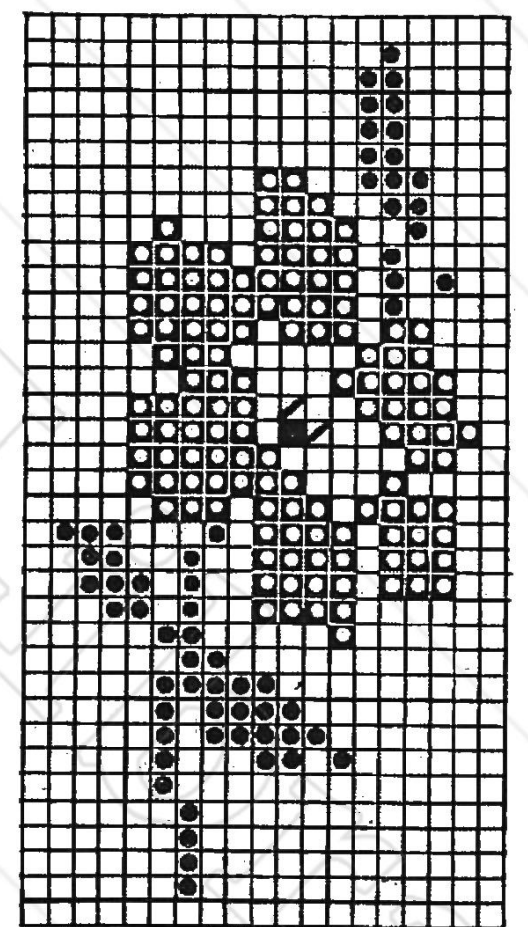
This is also of white organdie, edged the same way as apron, with blue organdie ruffles instead of pink. The cross-stitching is also in dainty pastel colors, followed by matching up your floss, from the colored designs on page 14.

Description of Articles on Center Colored Pages



WORKING PATTERN AND DIRECTIONS FOR COLLAR AND CUFF SET IN PEASANT EMBROIDERY.

This is on very heavy Art linen in an oyster shade, and is worked in Marine Blue 35 and Lt. Red 6, and is very striking. It is worked on canvas 8 to the inch with six strands of floss, and the delicate scrolls are worked with the blue before the canvas is removed. The pattern is easily followed from color chart, page 22, and is to be used in sections as shown on collar on colored page.



- CERISE 41
- STEEL BLUE 108
- YELLOW 9
- WHITE 1
- BLACK 12
- MOSS GREEN 5
- GOLDEN BROWN 51
- DK. LAVENDER 37

WORKING PATTERN AND COLOR CHART FOR BLACK BAG ON CENTER COLORED PAGE.

Description of Articles on Center Colored Pages



TELEPHONE BOOK COVER

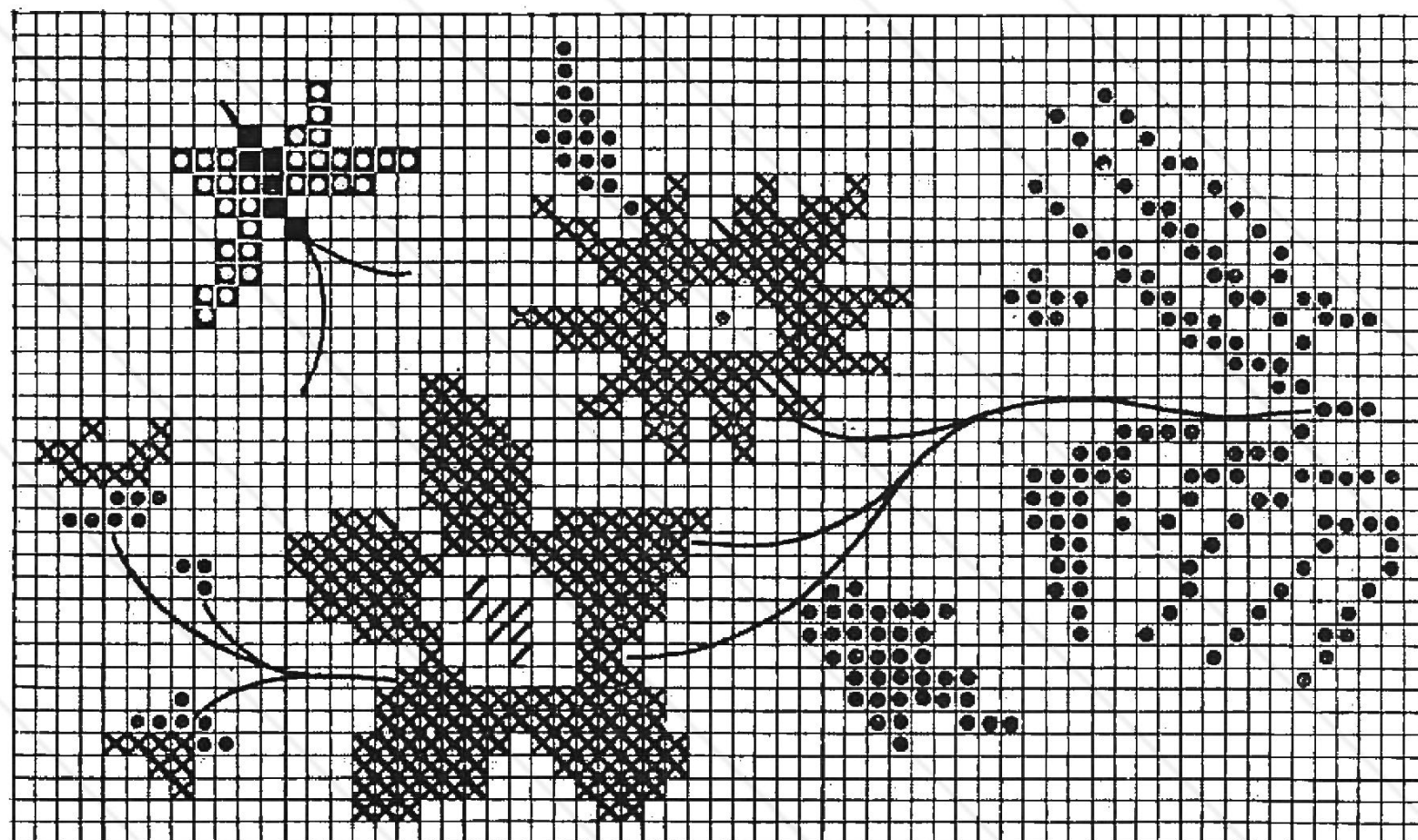
This can be made to fit your own phone book, and the design centered on the cover in 10-to-the-inch or 8-to-the-inch canvas, according to the size of the book, "Don't be a Polly at the Phone" is a sufficient reminder, and a good one. Follow color chart on page 22. For Parrot use Steel Blue 108, Mid Apple Green 104, and Black 12. For stand, Golden Brown 51.

DIRECTIONS FOR OLD LADY'S BAG

The bag to right of center is of purple satin, with a black satin medallion, outlined in a frill of dainty lace and decorated with lavender and purple flowers, and would be adored by any old lady. For the largest flower use Dk. Lavender 37, and for the smaller one and buds, use Purple 32. For the butterfly wings use Dk. Turquoise 79, with Grey 64 for the body. For small leaves use Moss Green 5, and larger ones with stems use Dk. Moss Green 60. For center of flower use Golden Brown 51. It is quite Japanese in design and coloring. Follow color chart page 22.

THE TATTING AND FOREIGN EMBROIDERY CENTERPIECE

This centerpiece is especially new in that the tating medallions are followed in designing like Peasant embroidery. It is a wonderful and entirely new idea, and all crocheters will want to tat when they see this piece, Let us help you. Follow design and directions on page 8.

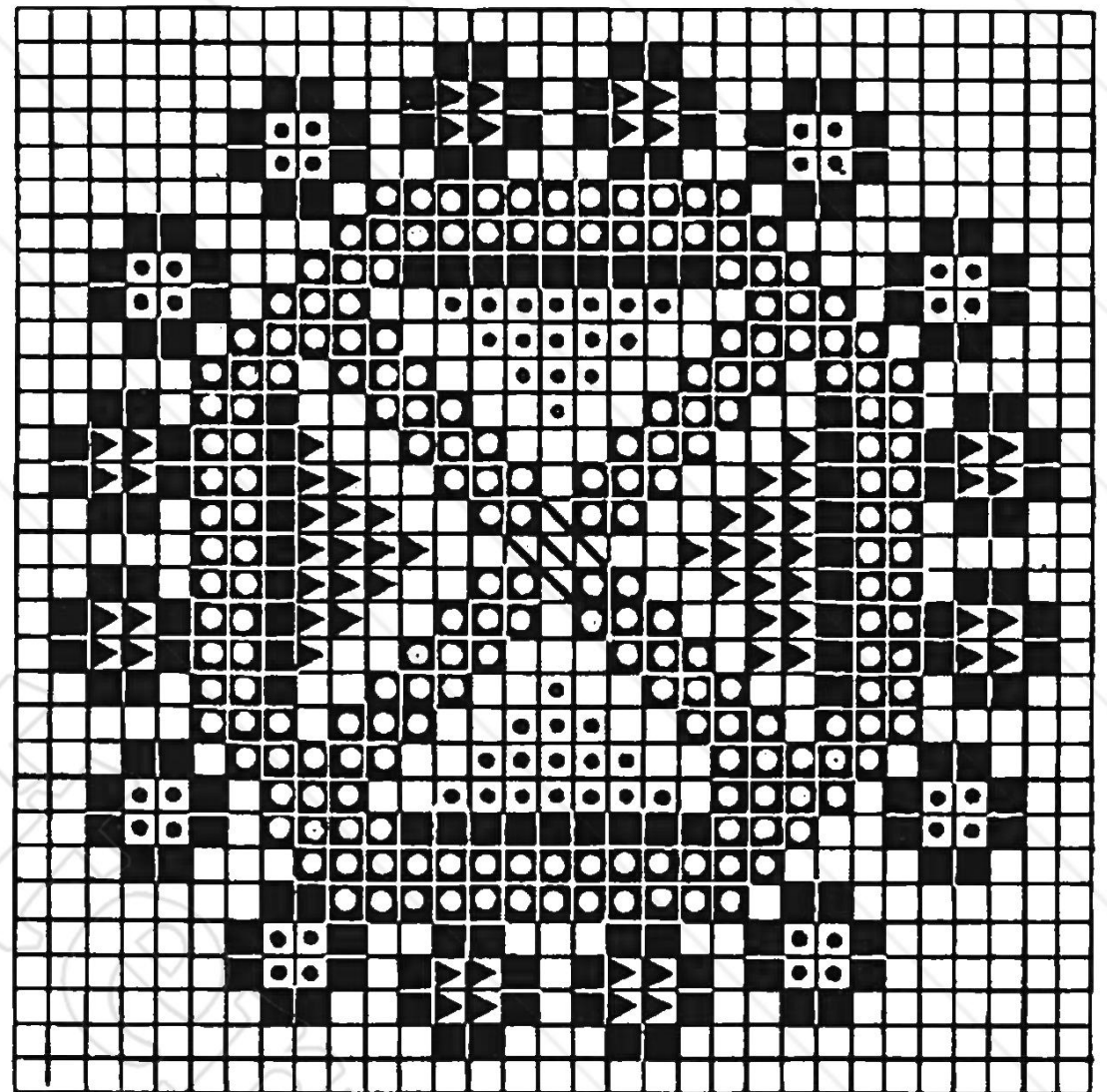
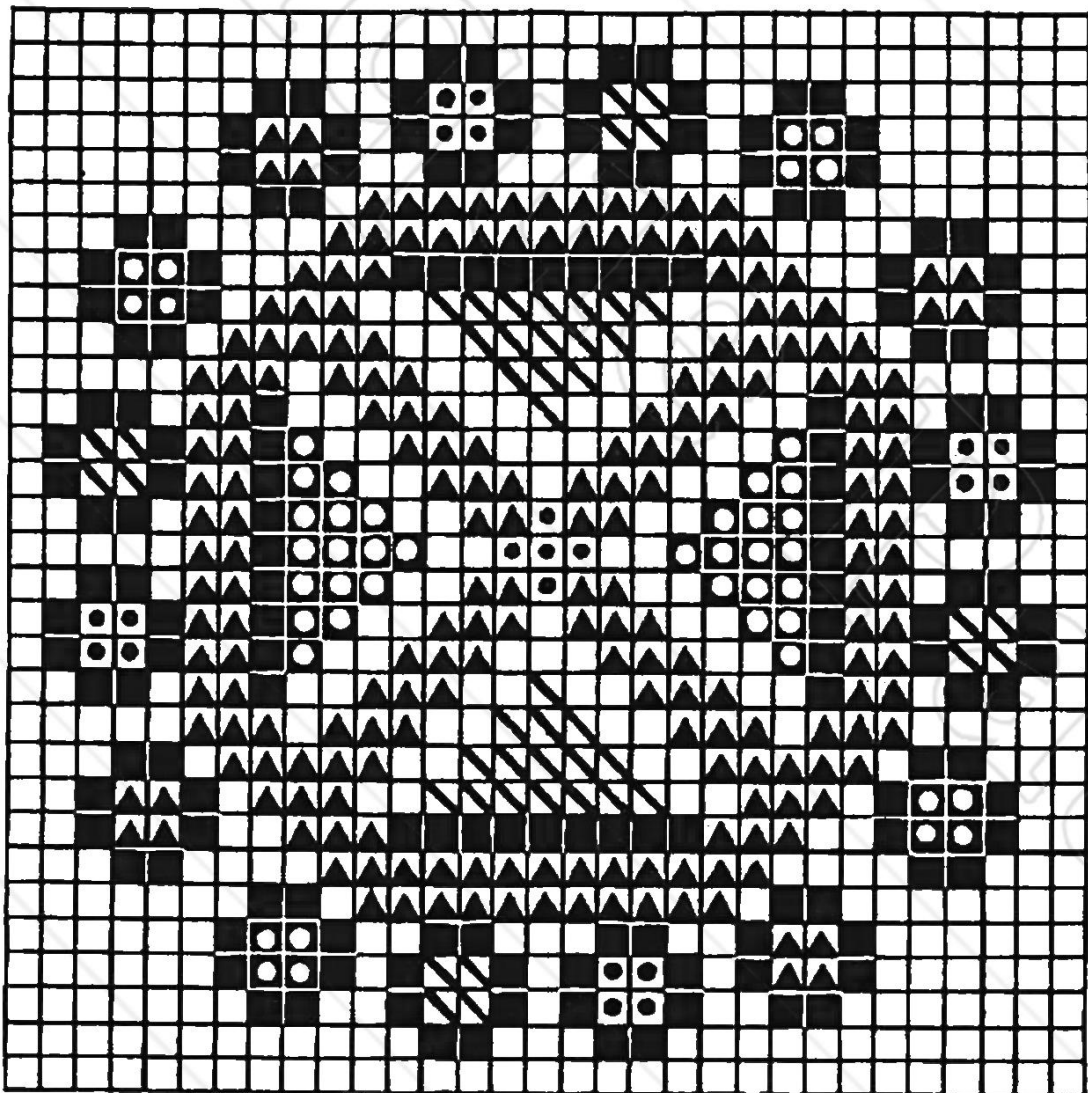


WORKING PATTERN FOR CROSS-STITCH ON LADY'S BAG

Directions for Pillow on Back Cover

The Pillow on back of cover is very charming in Old World stitchery, the brilliant colors of which are used mostly by the peasants, and often called Peasant Embroidery.

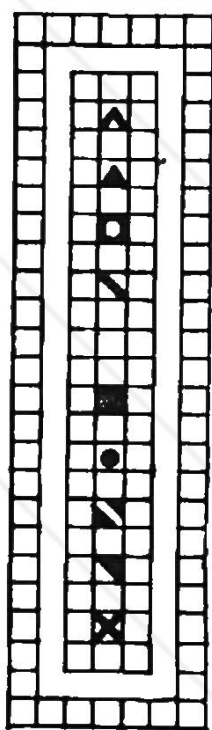
The color chart on this page is for the help of the worker in placing the markings on the working patterns for the cross-stitch designs. To use Coats Six Strand Floss and get the exact coloring of this pillow, use for the red markings, Crimson 120, for the blue markings, Royal Blue 44, and etc.



COLOR CHART

INSIGNIAS OF COLOR

RED
BLUE
YELLOW
BLACK
GREEN
BROWN
PURPLE



TONES OF COLORS USED

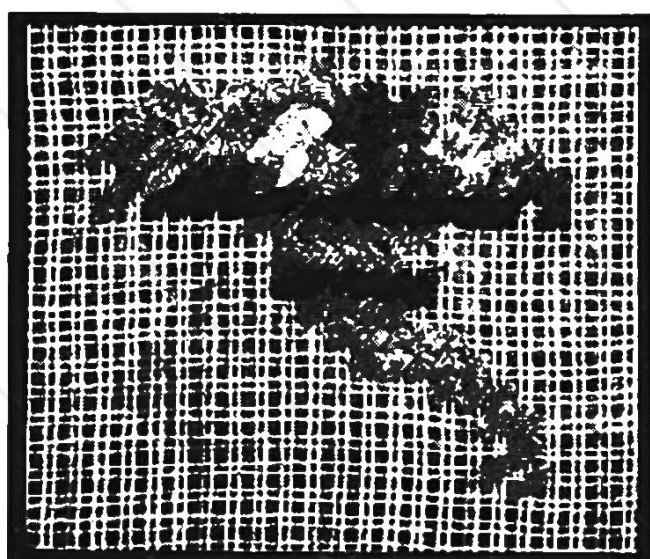
CRIMSON 120
ROYAL BLUE 44
DK. YELLOW 43
WHITE 1
BLACK 12
MID. APPLE GREEN 104

Follow this color chart carefully and after one complete design is worked out, it is very simple.

DIRECTIONS FOR PILLOW.

The pillow is a quaint application of an old Bulgarian pattern with a few color changes to add variety and interest, and if the worker will follow these working patterns with the help of the color chart, using blocks alternately, it will give a most pleasing effect. However, if preferred, one block can be followed consecutively with less care, and a pleasing result.

The pillow is worked on basket cloth, right over the squares of the material measuring 8 blocks to the inch, or can be made of a heavy art-linen of oyster tone, and the embroidery made over 8 squares to the inch canvas. The tassels can be made of the Coats Pearl Cotton No. 5 in Royal Blue 44, as follows: Make loop in corner of pillow (to which to attach the tassel), of 4 strands of Pearl Cotton No. 8 and sew into the seam. Wrap this cotton around card board 7 inches wide, 20 times, then cut at one end, and draw through loop half way, so ends of tassels will be even. With a single piece of the Pearl Cotton wrap tight around tassel about $\frac{1}{2}$ or $\frac{3}{4}$ inch from top. Tie and cut off ends.

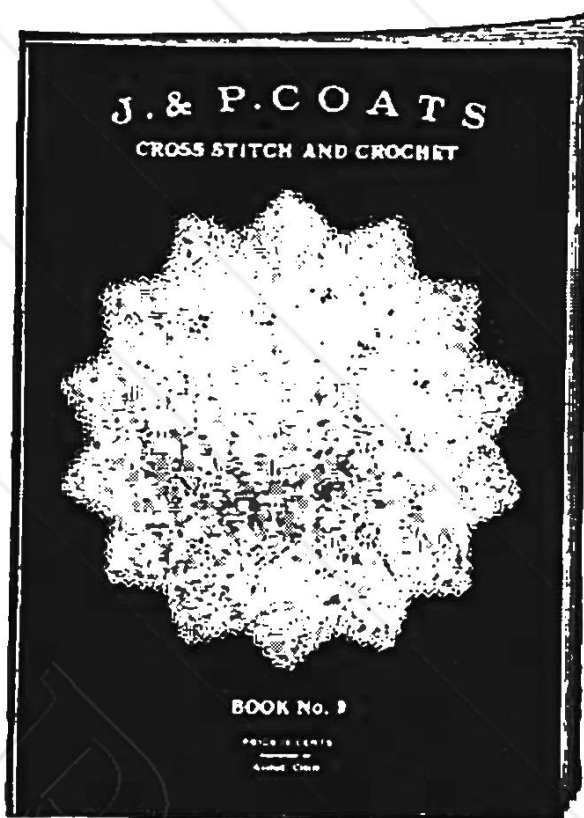


Helpful Suggestions

This piece of work is especially to show that the colored patterns are as useful for tapestry as for cross-stitch, and that Coats Six Strand Floss is adapted to this stitch as to all others. It is made on canvas like cross-stitch, only the stitches all run the same way, instead of being crossed back, and the work is left on the canvas where it is made, the background being filled in with one tone, usually gray, tan or black and used for chair-backs and seats, footstools and pillows.

J. & P. COATS PATTERN BOOKS

DESIGNED BY ANNE ORR



J. & P. COATS BOOK NO. 9
CROSS-STITCH AND CROCHET

COATS BOOK No. 1—GOWN YOKES AND BOUDOIR CAPS	PRICE 10 CENTS
COATS BOOK No. 2—GENERAL CROCHET WORK	PRICE 10 CENTS
COATS BOOK No. 3—YOKES AND GIFTS	PRICE 10 CENTS
COATS BOOK No. 4—FILET CROCHET	PRICE 10 CENTS
COATS BOOK No. 5—EDGINGS, INSERTIONS AND MEDALLIONS	PRICE 10 CENTS
COATS BOOK No. 6—LITTLE TOTS' ARTICLES	PRICE 10 CENTS
COATS BOOK No. 7—SWEATERS, YOKES AND BOUDOIR CAPS	PRICE 10 CENTS
*COATS BOOK No. 8—EMBROIDERY AND HOT IRON PATTERNS	PRICE 10 CENTS
COATS BOOK No. 9—CROSS-STITCH AND CROCHET	PRICE 10 CENTS
*COATS BOOK No. 11—MONOGRAMS, INITIALS AND HANDKERCHIEFS IN EMBROIDERY AND HOT IRON PATTERNS	PRICE 10 CENTS
*COATS BOOK No. 12—EMBROIDERY *WITH HOT IRON PATTERNS	PRICE 10 CENTS

BOOKS MAY BE PURCHASED FROM YOUR DEALER OR SENT
POSTPAID ON RECEIPT OF PRICE

THE SPOOL COTTON COMPANY, DEPT. A, 315 FOURTH AVENUE, NEW YORK

J. & P. COATS COTTONS ARE THE BEST

MADE TO SUIT EVERY REQUIREMENT

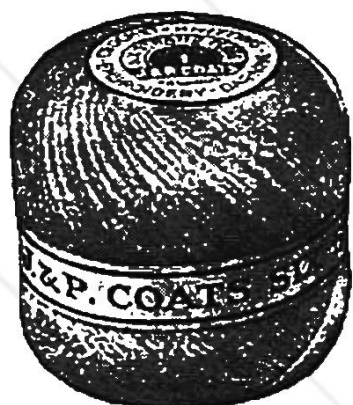
SEWING, CROCHET, EMBROIDERY, DARNING, KNITTING



J. & P. COATS SIX STRAND FLOSS—SKEINS
FAST COLORS FOR EMBROIDERY



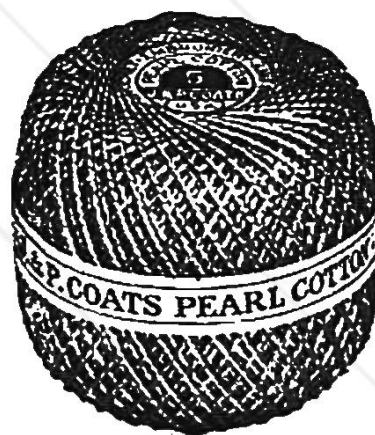
J. & P. COATS
DARNING COTTON
(45 YARD SPOOLS)



J. & P. COATS
SIX STRAND FLOSS
BALLS



J. & P. COATS
MERCERIZED CROCHET



J. & P. COATS
PEARL COTTON



J. & P. COATS
TATTING COTTON

OTHER J. & P. COATS ARTICLES ARE "SILK FINISH" CROCHET, MERCERIZED DARNING,
PEARL COTTON SKEINS, EMBROIDERY, "FIBERSHEEN" (FOR EMBROIDERY), ETC.

