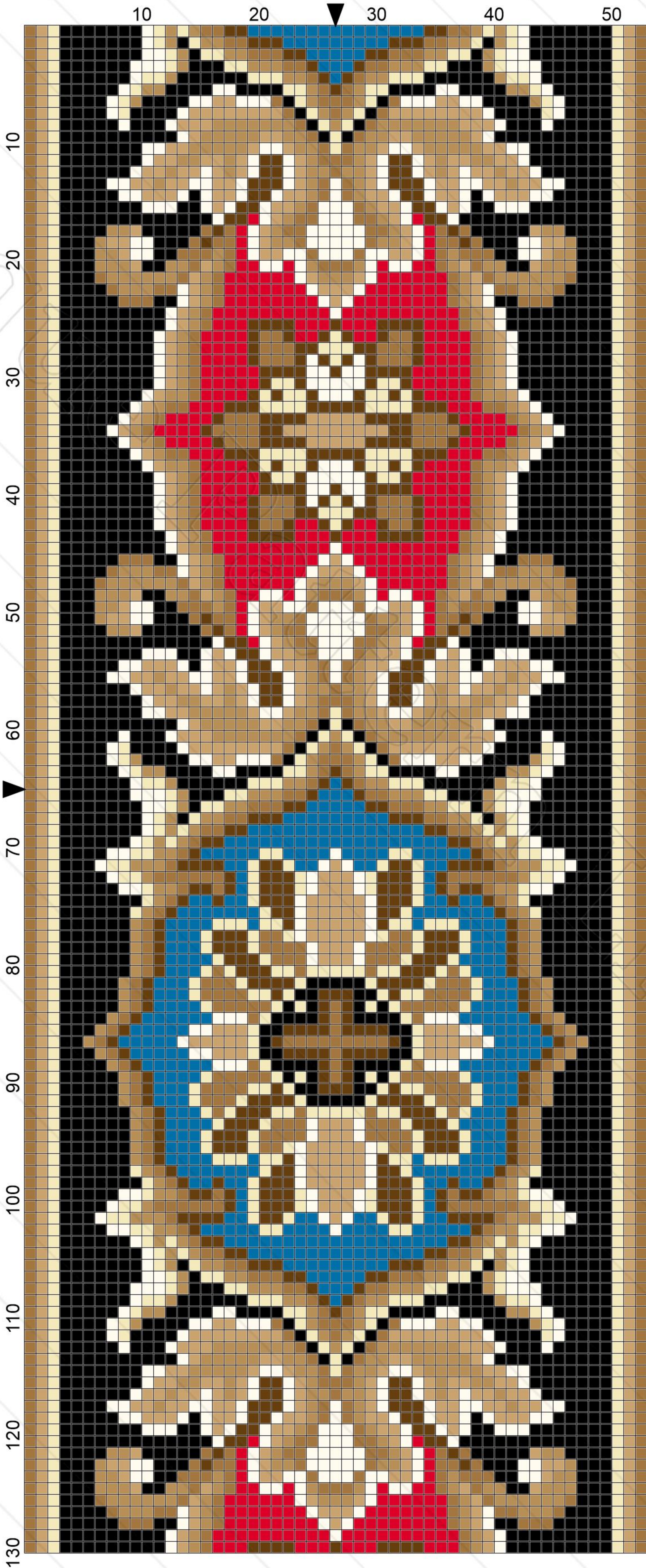




Lith FORMSTECHE & FILS 122 Faub St Martin, Paris



	10	20	30	40	50
10	5 3 2	5 3 2	5 3 2	5 3 2	5 3 2
20	5 3 2	5 3 2	5 3 2	5 3 2	5 3 2
30	5 3 2	5 3 2	5 3 2	5 3 2	5 3 2
40	5 3 2	5 3 2	5 3 2	5 3 2	5 3 2
50	5 3 2	5 3 2	5 3 2	5 3 2	5 3 2
60	5 3 2	5 3 2	5 3 2	5 3 2	5 3 2
70	5 3 2	5 3 2	5 3 2	5 3 2	5 3 2
80	5 3 2	5 3 2	5 3 2	5 3 2	5 3 2
90	5 3 2	5 3 2	5 3 2	5 3 2	5 3 2
100	5 3 2	5 3 2	5 3 2	5 3 2	5 3 2
110	5 3 2	5 3 2	5 3 2	5 3 2	5 3 2
120	5 3 2	5 3 2	5 3 2	5 3 2	5 3 2
130	5 3 2	5 3 2	5 3 2	5 3 2	5 3 2

Title: A-MH105 [Magasin des Demoiselles] – Border in brown, red and blue
Author: Antique Pattern Library
Company: New Media Arts, Inc.
Copyright: Creative Commons 4.0 NC SA BY
Grid Size: 53W x 130H
Design Area: 3.79" x 9.29" (53 x 130 stitches)

Legend: Stitches

≈	DMC Cotton 995	electric blue - dk
x	DMC Cotton 666	christmas red - br
1	DMC Cotton 712	cream
2	DMC Cotton 677	old gold - vy lt
3	DMC Cotton 437	tan - lt
4	DMC Cotton 436	tan
5	DMC Cotton 435	brown - vy lt
6	DMC Cotton 801	coffee brown – dk
■	DMC Cotton 310	black