

FREE DISTRIBUTION ONLY. NOT FOR SALE

Antique Pattern Library

For more information, please see our website at: <http://www.antiquepatternlibrary.org>

This is a scan of an antique book that is, to the best of our knowledge, in the public domain. The scan itself has been edited for readability, and is licensed under the **Creative Commons** Attribution-NonCommercial-ShareAlike License. To view a copy of this license, visit <http://creativecommons.org/licenses/by-nc-sa/2.5/> or send a letter to Creative Commons, 559 Nathan Abbott Way, Stanford, California 94305, USA.

You may share copies or printouts of this scan freely. You may not sell copies or printouts.

Antique Pattern Library is a project of New Media Arts, Inc. <http://www.newmediaarts.org>, a nonprofit organization tax-exempt under IRC 501(c)(3). Donations may be tax deductible, depending on your tax status and tax jurisdiction.

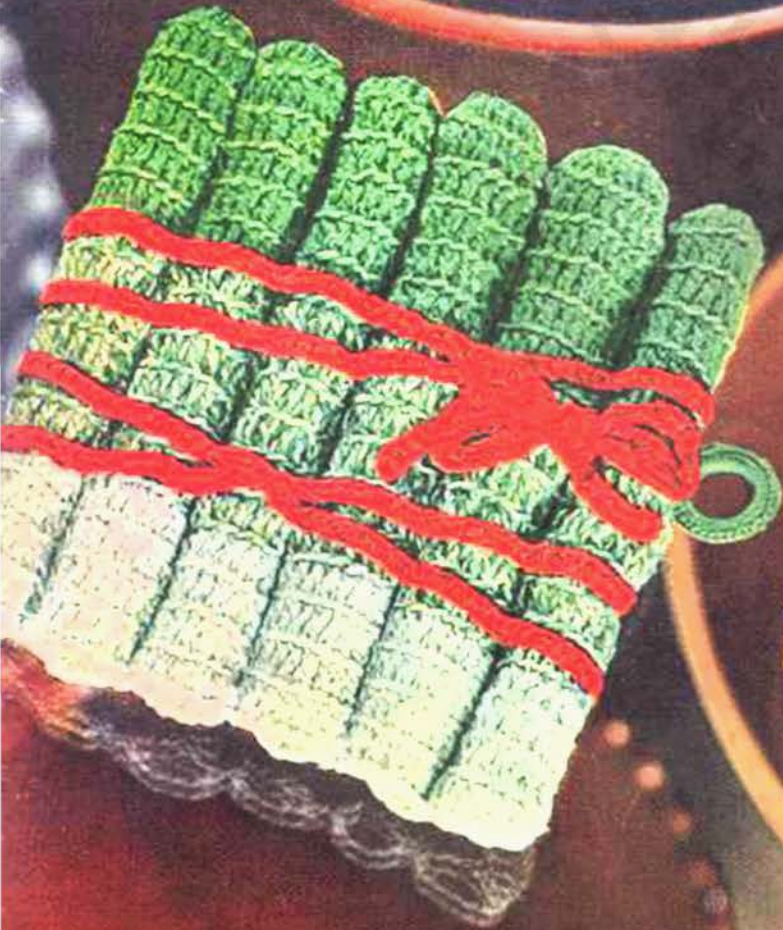
Donated by
Judith Adele 2011

NEW BOOK OF

POT HOLDERS

10¢

and Hot Platter Mats



Kitchen Essentials . . .

bring cheer to your kitchen with these useful and attractive pot holders and hot platter mats . . . crochet them in the colors specified with each direction, or choose from the wide selection of colors available in . . . J. & P. Coats or Clark's O.N.T. threads.

Lobster . . . S-84

MATERIALS:

J. & P. Coats "Knit-Cro-Sheen," Art. A.64, 1 ball of No. 25 Crystal Blue; or

Clark's O.N.T. Mercerized Bedspread Cotton, Art. B.504, colors of your own choice; or

J. & P. Coats or Clark's O.N.T. Pearl Cotton, Art. A. or B.19, Size 5, 1 ball of No. 8 Blue; and

Clark's Big Ball Three Cord Mercerized Crochet, Art. B.34, Size 20, 1 ball of No. 123-A Flamingo.

Milwards Steel Crochet Hook No. 7.

A piece of blue felt for lining.

A bone ring.

Starting at lower edge with Crystal Blue make a chain 7 inches long. **1st row:** Sc in 2nd ch from hook and in each ch across until row measures $5\frac{1}{2}$ inches. Cut off remaining chain. Ch 1, turn. **2nd row:** Sc in each sc across. Ch 1, turn. Repeat 2nd row until piece measures $5\frac{1}{2}$ inches from starting chain. Break off.

BORDER . . . 1st rnd: Attach a double strand of Flamingo to any corner, 3 sc in same place, sc closely around outer edge making 3 sc in each corner. Join with sl st to first sc. **2nd and 3rd rnds:** Ch 1, sc in each sc around, making 3 sc in center sc of 3-sc group at each corner. Join. Break off at end of 3rd rnd.

LOBSTER—Body . . . With double strand of Flamingo, ch 16. **1st row:** Dc in 4th ch from hook and in each ch across, 5 dc in last ch. Working along opposite side of starting chain, dc in each ch across. Ch 3, turn. **2nd row:** Skip first dc, dc in each st around, making 2 dc in each of the 3 center dc of 5-dc group at rounded end. Ch 1, turn. **3rd row:** Sc in first dc, (ch 8, sl st in 3rd ch from hook, ch 3, sl st in 3rd ch from hook, sl st in next 5 ch—small claw—sc in next 2 dc) 4 times; sc in next 6 dc, ch 3, sl st in side of last sc made—eye—sc in next 2 dc, ch 27, sl st in 2nd ch from hook and in each ch across—feeler—sc in next 4 dc, ch 27, complete feeler and other side to correspond. Break off.



MEDIUM CLAW . . .

Attach double strand of Flamingo to first sc following first set of small claws made, ch 30. **1st row:** Sl st in 2nd ch from hook, sc in next 12 ch, (skip next ch, sc in next 3 ch) 3 times; skip next ch, sc in each remaining chain, sl st in next 2 sc on Body. Turn. **2nd row:** Sc in each sc across to within last 11 sc, sl st in next sc, (in next sc make sl st, ch 3 and sl st, sl st in next 2 sc) twice; in next sc make sl st, ch 3 and sl st—teeth. Break off. **3rd row:** With wrong side of last row facing, attach double strand of Flamingo to 3rd sc following teeth, sc in next 3 sc, ch 15, sl st in 2nd ch from hook, sc in next ch, half dc in next ch, 2 dc in next ch, dc in next 2 ch, 2 dc in next ch, dc in next ch, half dc in each remaining ch, holding back on hook the last loop of each dc, make dc in side of next half dc, in base of same half dc and in next st, thread over and draw through all loops on hook (cluster made), (work off next 3 sc as 1 sc) twice; sc in each remaining st, sl st in Body. Break off.

LARGE CLAW . . . With wrong side of last row of Body facing, attach double strand of Flamingo to first sc following claws, ch 50. **1st row:** Sl st in 2nd ch from hook, sl st in next 2 ch, skip next ch, (sc in next 5 ch, work off next 2 sc as 1 sc) 4 times; sc in next 2 ch, work off next 2 sc as 1 sc, sc in next 12 ch, sl st in next 2 sts on Body. Turn. **2nd row:** (Sc in next 3 sc, work off 2 sc as 1 sc) twice; half dc in next sc, dc in next sc, work off next 2 dc as 1 dc, dc in next 3 sc, (work off 2 dc as 1 dc, dc in next sc) 6 times; work off 2 sc as 1 sc, sc in next 3 sc, sl st in next 3 sc. Turn. **3rd row:** (In next st make sl st, ch 3

and sl st, sl st in next st) twice; ch 3, sl st in 3rd ch from hook, sc in next 2 sts, (ch 3, sl st in 3rd ch from hook, half dc in next 2 sts) twice; dc in next 12 sts; ch 21, sl st in 2nd ch from hook, sc in next ch, half dc in next 3 ch, dc in next 3 ch, 2 dc in next ch, tr in next 5 ch, dc in next 6 ch, make a 5-dc cluster by making 2 dc in side of next dc, dc in base of same dc and dc in next 2 sts, half dc in next st, sc in each remaining st, sl st in Body. Break off.

TAIL . . . Starting at lower end, ch 11. **1st row:** Dc in 4th ch from hook, dc in each ch across, 2 dc in last ch. Ch 1, turn. **2nd row:** Sl st in back loop of each dc across. Ch 3, turn. **3rd row:** Working in back loop of previous dc row make 3 dc in first dc, dc in each dc across to within last 3 dc, 3 dc in next dc. Ch 1, turn. Repeat 2nd and 3rd rows alternately 3 more times. Break off.

Now work as follows: With wrong side of first dc row facing, attach double strand of Flamingo to first ch on opposite side of starting chain. **1st row:** Sl st in each ch across. Ch 4, turn. **2nd row:** 4 tr in back loop of first sl st, tr in back loop of each sl st across, 5 tr in back loop of last sl st. Ch 1, turn. **3rd row:** Skip first tr, sl st in next 2 tr, in next tr make sc, 2 half dc and sc; half dc in next tr, dc in next tr, 3 tr in next tr, dc in next tr, half dc in next tr, in next tr make sc, 2 half dc and sc. Break off.

Sew Lobster in place on pot holder. Attach double strand of Flamingo to bone ring. Sc closely around ring. Break off. Sew to corner. Cut felt to size and sew in place for lining.

Libra

S-67

MATERIALS:

J. & P. Coats "Knit-Cro-Sheen," Art. A.64, 1 ball each of No. 84 Beige and No. 43 Dk. Yellow; or

Clark's O.N.T. Mercerized Bedspread Cotton, Art. B.504, colors of your own choice; or

J. & P. Coats or Clark's O.N.T. Pearl Cotton, Size 5, Art. A. or B.19, 3 balls of No. 61 Ecu and 1 ball of No. 11 Orange.

Milwards Steel Crochet Hook No. 7.
A piece of grey felt for lining.
A bone ring.

Starting at center with Beige, ch 2. **1st rnd:** 7 sc in 2nd ch from hook. **2nd rnd:** 2 sc in each sc around. **3rd rnd:** * 2 sc in next sc (1 sc increased), sc in next sc. Repeat from * around. **4th rnd:** * 2 sc in next sc, sc in next 2 sc. Repeat from * around. Inc 7 sc evenly on each rnd until piece measures 5¾ inches in diameter. Join and break off. **Next rnd:** Attach Dk. Yellow to same place as sl st, sc in each sc around. **Following rnd:** Sc in each sc around. Join and break off.

SCALES . . . Starting at center with Yellow, ch 41. **1st rnd:** Half dc in 3rd ch from hook, half dc in next ch, sc in next 6 ch, half dc in next 3 ch, dc in next 7 ch, half dc in next 4 ch, sc in next 9 ch, sl st in next 5 ch, sc

in next ch, half dc in next ch, 3 sc in next ch; now, working along opposite side of starting chain, half dc in next ch, sc in next ch, sl st in next 5 ch, sc in next 9 ch, half dc in next 4 ch, dc in next 7 ch, half dc in next 3 ch, sc in next 6 ch, half dc in next 3 ch. Break off.

SIDE PIECE (Make 2) . . . With Yellow, ch 22. **1st row:** Half dc in 3rd ch from hook and in next 2 ch, 2 half dc in next ch, half dc in next ch, dc in next 2 ch, 2 dc in next ch, dc in next ch, 2 half dc in next ch, half dc in next 2 ch, sc in next 5 ch, half dc in same ch as last sc, skip 2 ch, sl st in next ch. Break off. **Next row:** On opposite side of starting chain, attach Yellow in center sc of 5-sc group, ch 35. Sl st in same ch where thread was attached. Break off. **Following row:** Skip 12 ch, attach Yellow to next ch, 2 sc in same ch, sc in next 9 ch, 2 sc in next ch. Break off. Attach thread to same place where thread was attached, ch 12, sl st in ch opposite center sc of last sc row. Break off.

TOP PIECE . . . Ch 4, sc in 2nd ch from hook, half dc in next ch, 3 sc in next ch; working along opposite side of starting chain, make sc in next 2 ch, 3 sc in next sc, sc in half dc, sl st in next sc. Break off.

Sew to center of pot holder as illustrated. Embroider letters in Yellow chain stitch. Cut a piece of felt slightly larger than outer edge of pot holder. Pink around edges and sew in place. With Yellow sc closely around bone ring. Join and break off. Sew to pot holder.

Pisces . . . S-85

MATERIALS:

J. & P. Coats "Knit-Cro-Sheen," Art. A.64, 1 ball each of No. 9 Yellow and No. 12 Black; or

Clark's O.N.T. Mercerized Bedspread Cotton, Art. B.504, colors of your own choice; or

J. & P. Coats or Clark's O.N.T. Pearl Cotton, Art. A. or B.19, Size 5, 2 balls each of No. 43 Dk. Yellow and No. 12 Black.

Milwards Steel Crochet Hook No. 7.
A piece of felt for lining. A bone ring.

Starting at center with Yellow, ch 2. **1st rnd:** 7 sc in 2nd ch from hook. **2nd rnd:** 2 sc in each sc around. **3rd rnd:** * 2 sc in next sc (1 sc increased), sc in next sc. Repeat from * around. **4th rnd:** * 2 sc in next sc, sc in next 2 sc. Repeat from * around. Inc 7 sc evenly on each rnd until piece measures 5¾ inches in diameter. Sl st in next sc. Break off. **Next rnd:** Attach Black to same place as sl st, sc in each sc around. **Following rnd:** Sc in each sc around, sl st in first sc, sc closely around bone ring. Join. Sl st in next sc. Break off.

FISH (Make 2) . . . Starting at lower edge with Black, ch 40. **1st row:** Sl st in 2nd ch from hook, sc in next ch, half dc in next 3 ch, ch 5, sl st in 2nd ch from hook, sc in next ch, half dc in next 2 ch, holding back on

Continued on page 11





Pineapple...S-86

MATERIALS:

J. & P. Coats "Knit-Cro-Sheen," Art. A.64, 1 ball each of No. 9 Yellow, No. 17 Shaded Browns and No. 48 Hunter's Green and a few yards of No. 26 Nile Green; or

Clark's O.N.T. Mercerized Bedspread Cotton, Art. B.504, colors of your own choice; or

J. & P. Coats or Clark's O.N.T. Pearl Cotton, Art. A. or B.19, Size 5, 2 balls each of No. 43 Dk. Yellow and No. 48 Hunter's Green; 1 ball each of No. 81 Dk. Brown and No. 26 Nile Green.

Milwards Steel Crochet Hook No. 7.

A piece of felt for lining. A bone ring.

Starting at top of pineapple with Brown, ch 13. Drop Brown. **1st row:** Attach Yellow to first ch from hook, working over Brown, ch 3, 2 dc in same ch (half shell made), skip 2 ch, sc in next ch, skip 2 ch, 5 dc in next ch (shell made), skip 2 ch, sc in next ch, skip 2 ch, 2 dc in next ch, thread over, insert hook in same ch, draw loop through, thread over and draw through 2 loops, drop Yellow, pick up Brown and draw through remaining 2 loops thus changing color (always change color in this manner). Ch 1, turn. **2nd row:** Working over Yellow, sc in first dc, sc in next 2 dc, sc at base of next sc (long sc made), sc in next 2 dc, 3 sc in next dc, sc in next 2 dc, sc at base of next sc, sc in next 2 dc, insert hook in top of starting chain, draw loop through, drop Brown, pick up Yellow, draw through remaining 2 loops on hook. Ch 3, turn. **3rd row:** 2 dc in first sc, sc in next sc, shell in next long sc, sc in center sc of next shell, shell in next long sc, skip 1 sc, sc in next sc, half shell in next sc, drop Yellow, pick up Brown. Ch 1, turn. **4th row:** Sc in first dc, sc in

next 2 dc, * long sc over next sc, sc in next 2 dc, 3 sc in next dc, sc in next 2 dc. Repeat from * across, ending with sc in top of turning chain, drop Brown, pick up Yellow. Ch 3, turn. **5th row:** Half shell in first sc, sc in next sc, * shell in next long sc, sc in center sc of next shell. Repeat from * across, ending with shell in last long sc, skip 1 sc, sc in next sc, half shell in last sc, drop Yellow, pick up Brown. Ch 1, turn. **6th to 11th rows incl:** Repeat 4th and 5th rows alternately 3 more times. **12th row:** Repeat 4th row. Ch 1, turn. **13th row:** Sc in first sc, half shell in next long sc, * sc in center sc of next shell, shell in next long sc. Repeat from * across, ending with half shell in last long sc, sc in last sc, drop Yellow, pick up Brown. Ch 1, turn. **14th row:** Long sc in first sc, sc in next 3 dc, * long sc in next sc, sc in next 2 dc. Repeat from * across, ending with long sc in last sc, drop Brown, pick up Yellow. Ch 3, turn. **15th row:** Half shell in first long sc, skip 1 sc, sc in next sc, * long sc in next sc, shell in next long sc. Repeat from * across, ending with half shell in last long sc, drop Yellow, pick up Brown. Ch 1, turn. **16th to 23rd rows incl:** Repeat 12th to 15th rows incl 2 more times. **24th row:** Repeat 4th row, do not ch to turn. **25th row:** Repeat 13th row. **26th to 34th rows incl:** Repeat last 2 rows alternately. Break off at end of 34th row. Make another piece the same way.

LEAF (Make 12) . . . Starting at base with Hunter's Green, ch 13. **1st row:** Sc in 2nd ch from hook and in each ch across. Ch 1, turn. **2nd row:** Skip first sc, sc in each sc across. Ch 1, turn. Repeat 2nd row until 1 sc remains. Break off. Attach Nile Green to side of first row,

sc closely across 2 sides, making 3 sc in last sc at point. Break off.

Sew leaves together as shown in illustration. Sew to pot holder. Line pieces of pot holder with felt. Sew pieces together, joining leaves and leaving an opening on one side. With Brown, sc closely around bone ring. Join and break off. Sew in place.

Watermelon S-78

MATERIALS:

J. & P. Coats "Knit-Cro-Sheen," Art. A.64, 1 ball each of No. 46-A Mid Rose, No. 1 White and No. 48 Hunter's Green; or

Clark's O.N.T. Mercerized Bedspread Cotton, Art. B.504, colors of your own choice; or

J. & P. Coats or Clark's O.N.T. Pearl Cotton, Art. A. or B.19, Size 5, 1 ball each of No. 46-A Mid Rose, No. 1 White and No. 48 Hunter's Green; and

J. & P. Coats Six Strand Embroidery Floss, Art. A.11, or Clark's O.N.T. Six Strand Cotton, Art. B.11, 1 skein of No. 12 Black.

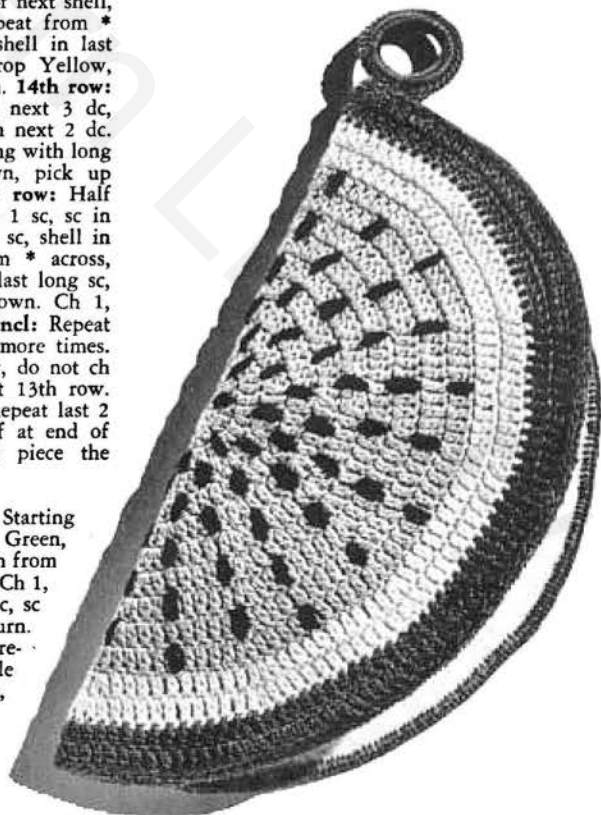
Milwards Steel Crochet Hook No. 7.

A piece of white felt for lining.

A bone ring.

Starting at center with Mid Rose, ch 4. **1st rnd:** 11 dc in 4th ch from hook. Join. **2nd rnd:** Ch 3, dc in same place as sl st, 2 dc in each dc around. Join to top of ch-3. **3rd rnd:** Ch 3, dc in same place as sl st, * dc in next

Continued on page 15



Polka Dot...S-92

HOT PLATTER MATS
and POT HOLDER

MATERIALS:

J. & P. Coats "Knit-Cro-Sheen," Art. A.64, 2 balls of No. 1 White and 1 ball of No. 126 Spanish Red; or

Clark's O.N.T. Mercerized Bedspread Cotton, Art. B.504, colors of your own choice; or

J. & P. Coats or Clark's O.N.T. Pearl Cotton, Art. A. or B.19, Size 5, 8 balls of No. 1 White and 4 balls of No. 126 Spanish Red.

Milwards Steel Crochet Hook No. 7.

½ yard of white felt.

A bone ring.

Platter Mat measures 9½ x 15 inches;
Small Mat measures
7¼ x 11½ inches

PLATTER MAT . . . Starting at center with White, ch 50. **1st rnd:** 4 dc in 4th ch from hook, dc in each ch across, 5 dc in last ch; working along opposite side of starting chain, make dc in each ch across. Join with sl st to top of starting chain. **2nd rnd:** Ch 3, dc in same place as sl st, dc in each dc around, increasing 5 dc evenly on each end—to inc 1 dc, make 2 dc in 1 dc. Join. Repeat 2nd rnd until 15 rnds have been completed. Break off at end of 15th rnd. Attach Spanish Red to same place as sl st. **16th to 19th rnds incl:** Repeat 2nd rnd. Break off at end of 19th rnd.

LARGE DOT (Make 11) . . . Starting at center with Red, ch 2. **1st rnd:** 7 sc in 2nd ch from hook. **2nd rnd:** 2 sc in each sc around. **3rd rnd:** * 2 sc in next sc (1 sc increased), sc in next sc. Repeat from * around. Join and break off.

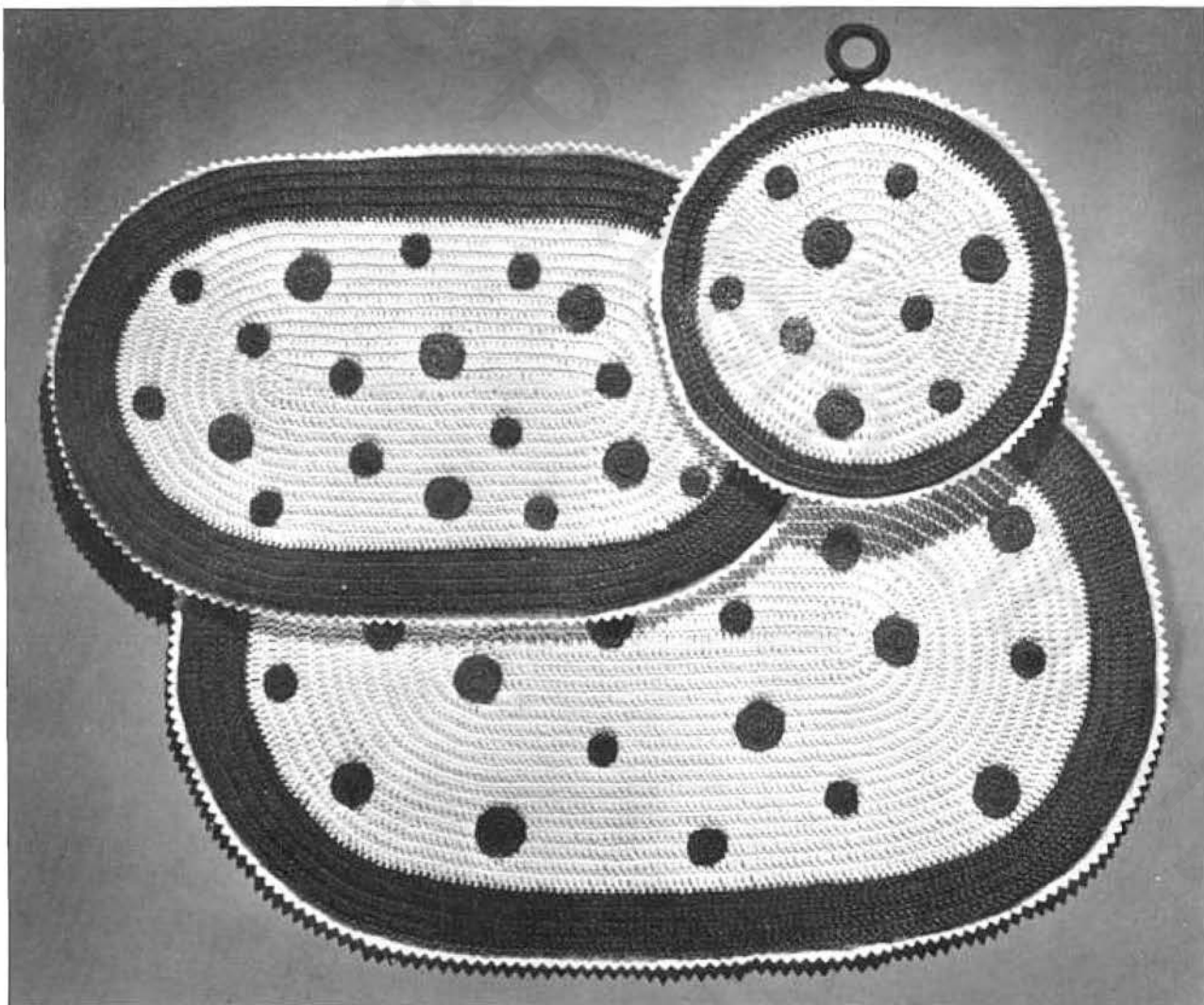
SMALL DOT (Make 11) . . . Work as for Large Dot until 2 rnds have

been completed. Join and break off. Sew Dots to mat as illustrated. Cut a piece of felt for lining slightly larger than mat. Pink around edges and sew in place.

SMALL PLATTER MAT . . . Work as for Platter Mat until 11 rnds are completed. Break off. **12th to 15th rnds incl:** Repeat 16th rnd of Platter Mat. Make 6 Large Dots and 13 Small Dots and complete as for Platter Mat.

POT HOLDER . . . Starting at center with White, ch 4. **1st rnd:** 11 dc in 4th ch from hook. Join with sl st to top of starting chain. **2nd rnd:** Ch 3, dc in same place as sl st, 2 dc in each dc around. Join. **3rd to 11th rnds incl:** Ch 3, dc in each dc around, increasing 12 dc evenly around. Join. Break off at end of 11th rnd. **12th and 13th rnds:** Attach Red and work as before. Break off at end of 13th rnd.

Make 3 Large Dots and 6 Small Dots. Complete as for Platter Mat. With Red sc closely around bone ring. Join and break off. Sew to pot holder.



NOTE: Pot Holders illustrated at right also shown in color on cover.

Corn on the Cob S-81

MATERIALS.

J. & P. Coats "Knit-Cro-Sheen," Art. A.64, 1 ball each of No. 43 Dk. Yellow and No. 1 White; or

Clark's O.N.T. Mercerized Bedspread Cotton, Art. B.504, colors of your own choice; or

J. & P. Coats or Clark's O.N.T. Pearl Cotton, Art. A. or B.19, Size 5, 2 balls of No. 43 Dk. Yellow and 1 ball of No. 1 White; and

Clark's Big Ball Three Cord Mercerized Crochet, Art. B.34, Size 20, 1 ball each of No. 48 Hunter's Green and No. 49 Chartreuse.

Milwards Steel Crochet Hooks No. 7 and No. 9.

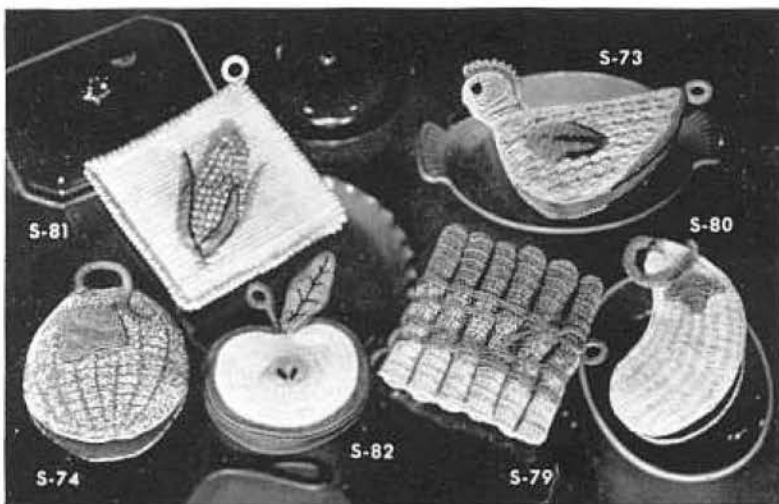
A piece of felt for lining.

A bone ring.

Starting at bottom with White and No. 7 hook, make a chain 8 inches long. **1st row:** Sc in 2nd ch from hook and in each ch across until row measures 6 inches. Cut off remaining chain. Ch 1, turn. **2nd row:** Sc in each sc across. Ch 1, turn. Repeat 2nd row until piece measures 6 inches. Ch 1, turn.

BORDER . . . 1st rnd: Sc closely around making 3 sc in each corner. Join and break off. **2nd rnd:** Attach Yellow to center sc at any corner, ch 3, 5 dc in same sc, drop loop from hook, insert hook through first dc, draw dropped loop through (pc st made), dc in same sc, * pc st in next sc, dc in next sc. Repeat from * around, making dc, pc st and dc in center sc of 3-sc group at each corner. Join and break off.

EAR OF CORN . . . Starting at top with Dk. Yellow, ch 7. **1st row:** Pc st in 5th ch from hook, skip 1 ch, dc in next ch. Ch 1, turn. **2nd row:** Sc in first dc, sc in top of pc st, sc in top of starting chain. Ch 3, turn. **3rd row:** Pc st in first sc, sc in next sc, pc st in next sc, dc in same sc as last pc st. Ch 1, turn. **4th row:** Sc in first dc, * sc in next pc st, sc in next sc. Repeat from * across, ending with sc in top of turning chain. Ch 3, turn. **5th row:** Pc st in first sc, * sc in next sc, pc st in next sc. Repeat from * across, ending with dc in same sc as last pc st. Ch 1, turn. **6th to 9th rows incl:** Repeat 4th and 5th rows alternately 2 more times (5 pc sts on 9th row). **10th row:** Sc in first pc st, * sc in next sc, sc in next pc st. Repeat from *



Chicken S-73 and Squash S-80 . . . Directions on page 14

across, ending with sc in last pc st. Ch 3, turn (9 sc). **11th row:** Repeat 5th row (5 pc sts). **12th row:** Repeat 4th row. **13th row:** Repeat 5th row (6 pc sts). **14th row:** Repeat 10th row (11 sc). **15th row:** Repeat 5th row (6 pc sts). **16th row:** Repeat 4th row (13 sc). **17th row:** Repeat 5th row (7 pc sts). **18th row:** Repeat 10th row (13 sc). Repeat last 2 rows until 31 rows in all are completed. Break off.

SINGLE HUSK . . . Starting at long side with Chartreuse and No. 9 hook, ch 56. **1st row:** Sc in 2nd ch from hook and in next 5 ch, half dc in next 3 ch, dc in next 3 ch, tr in each ch across to within last 5 ch, dc in last 5 ch. Ch 1, turn. **2nd row:** Sc in first dc, sc in next 3 dc, half dc in next 3 dc, dc in next 30 sts, sc in each st to within last 10 sts, sl st in last 10 sts. Break off. **3rd row:** Attach Hunter's Green to opposite side of starting chain, sc in each ch across. Break off.

DOUBLE HUSK . . . Starting at long side with Chartreuse, ch 56. **1st row:** Sc in 2nd ch from hook and next 2 ch, half dc in next 3 ch, dc in each remaining ch across. Break off. Turn. **2nd row:** Attach Hunter's Green to first dc, sc in same place, sc in next 24 dc, ch 13. Break off. Turn. **3rd row:** Attach Chartreuse to first ch, ch 1, sc in same ch and in each ch across, half dc in next sc, dc in each sc across. Ch 3, turn. **4th row:** Skip first dc, dc in each st across. Break off. **5th row:** Attach Hunter's Green to end ch on 2nd row, 3 sc in side of next sc, sc in each st across. Break off.

BOTTOM . . . With Chartreuse, ch 6. **1st row:** Sc in 2nd ch from hook and in each ch across. Ch 1, turn. **2nd to 5th rows incl:** Sc in the back loop of each sc across, increasing 1 sc on row—*to inc 1 sc, make 2 sc in 1 sc*. Ch 1, turn. Break off at end of 5th row. Sew Ear of Corn and Husks in place on pot holder. Line with felt. With Yellow, sc closely around bone ring. Sew to corner.

Asparagus S-79

MATERIALS:

J. & P. Coats "Knit-Cro-Sheen," Art. A.64, 1 ball each of No. 48 Hunter's Green, No. 26 Nile Green, No. 21 Shaded Greens and No. 126 Spanish Red; or

Clark's O.N.T. Mercerized Bedspread Cotton, Art. B.504, colors of your own choice; or

J. & P. Coats or Clark's O.N.T. Pearl Cotton, Art. A. or B.19, Size 5, 4 balls each of No. 48 Hunter's Green, No. 26 Nile Green and No. 21 Shaded Greens and 1 ball of No. 126 Spanish Red.

Milwards Steel Crochet Hooks No. 4 and No. 7.

A bone ring.

Use thread double throughout.

STALK (Make 6) . . . Starting at tip with Hunter's Green and No. 4 hook, ch 2. **1st rnd:** 8 sc in 2nd ch from hook. Join with sl st to first sc. **2nd rnd:** Ch 3, dc in same place as sl st, 2 dc in each sc around. Join to top of ch-3. **3rd to 7th rnds incl:** Ch 3, dc in each dc around. Join. Break off at end of 7th rnd. **8th to 13th rnds incl:** Attach Shaded Greens to same place as sl st and repeat 3rd rnd. Break off at end of 13th rnd. **14th to 17th rnds incl:** Attach Nile Green to same place as sl st and repeat 3rd rnd. Break off at end of 17th rnd.

Sew stalks together leaving 3/4 inch free at rounded end of each stalk.

TIE . . . With a single strand of Spanish Red and No. 7 hook make a chain 2 yards long. **1st row:** Half dc in 3rd ch from hook and in each ch across. Break off.

Wrap tie around asparagus and tie ends into a bow. With Green sc closely around bone ring. Join and break off. Sew bone ring in place.

Canteloupe S-74

MATERIALS:

J. & P. Coats "Knit-Cro-Sheen," Art. A.64, 1 ball each of No. 48 Hunter's Green, No. 43 Dk. Yellow and No. 17 Shaded Browns; or

Clark's O.N.T. Mercerized Bedspread Cotton, Art. B.504, colors of your own choice; or

J. & P. Coats or Clark's O.N.T. Pearl Cotton, Art. A. or B.19, Size 5, 4 balls each of No. 48 Hunter's Green and No. 43 Dk. Yellow and 1 ball of No. 81 Dk. Brown.

Milwards Steel Crochet Hook No. 4.

CANTELOUPE . . . Starting at one end with 1 strand each of Hunter's Green and Dk. Yellow, ch 13. **1st row:** Sc in 2nd ch from hook, * dc in next ch, sc in next ch. Repeat from * across. Ch 1, turn. **2nd row:** Make sc, dc and sc in first dc (2 sts increased), * dc in next sc, sc in next dc. Repeat from * across, ending with dc in last st. Ch 1, turn. Repeat 2nd row until piece measures 2 inches from starting chain, always ending with dc in last sc. Work without increasing until piece measures 4 inches from starting chain. **Next row:** Work off first 3 sts as 1 sc (2 sts decreased), * dc in next sc, sc in next dc. Repeat from * across, ending as before. Ch 1, turn. Repeat last row until there are 10 sts left on row. Ch 1, turn. **Next row:** Sc in first st, skip next st, sc in next 6 sts; skip next st, sc in last st. Break off. Make another piece the same way.

STEM (Make 2) . . . With Dk. Brown, ch 50. Sl st in 2nd ch from hook, sc in next ch, half dc in next ch, dc in next 22 ch, (2 dc in each of the next 7 ch, dc in next 5 ch) twice; ch 3. Now, working in side of last dc make dc, half dc, sc, half dc, dc, half dc and sc; in base of same dc make half dc and dc (base of stem). Break off.

LEAF (Make 2) . . . With Hunter's Green, ch 4. **1st row:** 5 dc in 4th ch from hook. Ch 3, turn. **2nd row:** Dc in first dc, 2 dc in next 4 dc, 2 dc in top of starting chain. Ch 3, turn. **3rd and 4th rows:** Dc in first dc, * dc in next 3 dc, 2 dc in next dc. Repeat from * across, ending with dc in top of turning chain. Ch 3, turn. **5th row:** Dc in first dc, * dc in next 4 dc, 2 dc in next dc. Repeat from * across. Ch 3, turn. **6th row:** Skip first dc, dc in next dc, half dc in next dc, sc in each dc across to within last 3 sts, half dc in next st, dc in next st, dc in top of turning chain. Ch 3, turn. **7th and 8th rows:** Dc in first dc, half dc in next dc, sc in each st across to within last 2 sts, half dc in next st, 2 dc in top of turning chain. Ch 3, turn. Break off at end of 8th row. Mark off 11 sts on center of last row. **9th row:** Attach Green to first st marked, ch 3, dc in next 10 sts. Ch 3, turn. **10th row:** Skip first dc, dc in next dc, work off next 3 dc as 1 dc (2 dc decreased), dc in each dc across to within last 3 sts, dec 2 dc. Ch 3,

turn. **11th row:** Skip first dc, dec 1 dc —to dec 1 dc, work off 2 dc as 1 dc— dc in next 2 dc, dec 1 dc. Ch 3, turn. **12th row:** Work off remaining sts as 1 dc. Break off.

Line both pieces of pot holder with felt and sew together at top, joining 3 inches on one side and 2 inches on other side. Sew leaves in place. Sew base of stem to top of pot holder and sew 2 inches of opposite end in place as illustrated. Sew loose pieces of stem together to form loop.

Apple . . . S-82

MATERIALS:

J. & P. Coats "Knit-Cro-Sheen," Art. A.64, 1 ball each of No. 1 White, No. 9 Yellow, No. 126 Spanish Red, No. 48 Hunter's Green and No. 17 Shaded Browns; or

J. & P. Coats or Clark's O.N.T. Pearl Cotton, Art. A. or B.19, Size 5, 2 balls of White; 1 ball each of No. 48 Hunter's Green, No. 126 Spanish Red, No. 43 Dk. Yellow and No. 81 Dk. Brown; and

J. & P. Coats Six Strand Embroidery Floss, Art. A.11, or Clark's O.N.T. Six Strand Cotton, Art. B.11, 1 skein of No. 12 Black.

Milwards Steel Crochet Hook No. 7.

A piece of red felt for lining.

Starting at center with Yellow, ch 6. Join with sl st to form ring. **1st rnd:** Ch 3, 15 dc in ring, ch 3, sl st in ring. **2nd rnd:** 5 sc over first ch-3, sc in next 5 dc, 2 sc in each of next 2 dc, 3 sc in next dc, 2 sc in each of next 2 dc, 5 sc over next ch 3, sl st in first sc. **3rd rnd:** Sl st in next sc, sc in next 2 sc, dc in next 11 sc, 3 dc in next sc, dc in next 11 sc, sc in next 2 sc, sl st in next 2 sc. Join with sl st to first sl st. **4th rnd:** Sl st in next sl st, 2 sc in each of next 3 sts, sc in next 11 dc, 3 sc in next dc, sc in next 11 dc, 2 sc in each of next 3 sts, sl st in next 2 sl sts. Join and break off. **5th rnd:** Attach White to first st, ch 3, dc in next 5 sts, 2 dc in each of next 2 sc, dc in next 8 sc, 2 dc in each of next 2 sc, dc in next 5 sc, 2 dc in each of next 2 sc, dc in next 8 sc, 2 dc in each of next 2 sc, dc in next 6 sts. Join to top of ch-3. **6th rnd:** Sc in same place as sl st, sc in next dc, half dc in next 2 dc, dc in next 3 dc, tr in next 3 dc, 2 tr in next dc, 2 dc in each of next 3 dc, dc in next 5 dc, 2 dc in next dc, dc in next 9 dc, 2 dc in next dc, dc in next 5 dc, 2 dc in each of next 3 dc, 2 tr in next dc, tr in next 3 dc, dc in next 3 dc, half dc in next 2 dc, sc in next 2 dc. Join. **7th rnd:** Sc in same place as sl st, sc in next st, half dc in next 2 sts, 2 dc in each of next 2 sts, 2 tr in each of next-2 sts, tr in next 4 sts, (2 dc in each of next 2 sts, dc in next 4 sts) twice; 2 dc in next st, dc in next 9 sts, 2 dc in next st, (dc in next 4 sts, 2 dc in each of next 2 sts) twice; tr in next 4 sts, 2 tr in each of next 2 sts, 2 dc in each of next 2 sts, half dc in next 2 sts, sc in next

2 sts. Join. **8th rnd:** Sc in same place as sl st, sc in next sc, half dc in next 2 sts, 2 dc in each of next 2 sts, 2 tr in each of next 2 sts, tr in next 4 sts, (2 dc in each of next 2 sts, dc in next 4 sts) 3 times; 2 dc in next st, dc in next 15 sts, 2 dc in next st, (dc in next 4 sts, 2 dc in each of next 2 sts) 3 times; tr in next 4 sts, 2 tr in each of next 2 sts, 2 dc in each of next 2 sts, half dc in next 2 sts, sc in next 2 sts. Join. **9th rnd:** Ch 2, half dc in same place as sl st, half dc in next 2 sts, dc in next 3 sts, tr in next 3 sts, 2 tr in each of next 3 sts, tr in next 6 sts, dc in next 15 sts, 2 dc in each of next 2 sts, dc in next 4 sts, 2 dc in next st, dc in next 19 sts, 2 dc in next st, dc in next 4 sts, 2 dc in each of next 2 sts, dc in next 15 sts, tr in next 6 sts, 2 tr in each of next 3 sts, tr in next 23 sts, 2 dc in next st, dc in next 4 sts, 2 dc in each of the next 2 sts, tr in next 25 sts, 2 dc in each of next 2 sts, dc in next 10 sts. Join. **11th rnd:** Sc in same place as sl st, sc in each st around. Join and break off. **12th rnd:** Attach Red to same place as sl st, sc in same place, sc in each sc around. Join. **13th rnd:** Sl st in next 3 sc, sc in each sc around to within last 4 sc, sl st in last 4 sc. Join. **14th rnd:** Sl st in next 5 sts, sc in each st around to within last 6 sts, sl st in last 6 sts. Join and break off. Make another piece the same way.

LEAF (Make 2) . . . Starting at center with Green, ch 30. **1st rnd:** Sc in 2nd ch from hook and in next 2 ch, half dc in next 3 ch, dc in next 3 ch, tr in next 3 ch, d tr in next 5 ch, tr in next 3 ch, dc in next 3 ch, half dc in next 3 ch, sc in next 2 ch, 3 sc in next ch (tip of leaf); working along opposite side of starting chain make sc in next 2 ch, half dc in next 3 ch, dc in next 3 ch, tr in next 5 ch, dc in next 3 ch, half dc in next 3 ch, 2 sc in same place as first sc. **2nd and 3rd rnds:** Sc in each st around, making 3 sc in center sc of each 3-sc group. Join and break off at end of 3rd rnd. Embroider veins with Black Embroidery Floss.

STEM (Make 2) . . . Starting at long side with Brown, make a chain 3 inches long. **1st row:** Dc in 4th ch from hook and in each ch for 1 inch, 2 dc in each remaining ch (leaving 1 inch free from beginning of row), sl st in next ch on opposite side of starting chain to form loop. Break off.

With Black Embroidery Floss, embroider 2 lazy daisy sts on each side of center for seeds. Cut a piece of felt slightly larger than outer edge of each pot holder piece. Sew in place so felt overlaps edge slightly. Sew stem in place. Sew edge of leaf to each side. Sew loose ends of leaf together. Sew pot holder pieces together at top over rounded sides for 3 inches.

Highland Fling . . .

Place Mats with a Tartan flavor . . .
gay and informal . . . Hot Platter Mats
to protect your furniture . . . practical Pot Holders . . . all are easy to make with
J. & P. COATS "Knit-Cro-Sheen" or CLARK'S O.N.T. Bedspread Cotton.

S-90
Directions on Page 10

S-88
Directions on Page 10

S-87
Directions on Page 10



S-91
Directions on Page 11

S-89
Directions on Page 11



TARTAN PLACE MATS or HOT PLATTER MAT S-87 . . . Directions on Page 10

Directions for Pot Holders and Place Mats or Hot Platter Mat illustrated on pages 8 and 9 .

**Tartan Place Mats
and Pot Holder S-87**

MATERIALS:

J. & P. Coats "Knit-Cro-Sheen," Art. A.64, 7 balls of No. 9 Yellow; 5 balls of No. 12 Black and 1 ball of No. 126 Spanish Red; or

Clark's O.N.T. Mercerized Bedspread Cotton, Art. B.504, colors of your own choice; or

J. & P. Coats or Clark's O.N.T. Pearl Cotton, Art. A. or B.19, Size 5, 24 balls of No. 43 Dk. Yellow; 18 balls of No. 12 Black and 6 balls of No. 126 Spanish Red.

Milwards Steel Crochet Hook No. 7.
2/3 yard red felt lining.

Place Mat measures 11 x 18½ inches including fringe

PLACE MAT or HOT PLATTER MAT . . . Starting at narrow edge with Dk. Yellow, ch 102 to measure 12 inches. **1st row:** Dc in 6th ch from hook, * ch 1, skip 1 ch, dc in next ch. Repeat from * across. Ch 4, turn (49 sps). **2nd and 3rd rows:** Skip first dc, * dc in next dc, ch 1. Repeat from * across, skip 1 ch of last sp, dc in next ch. Ch 4, turn. Break off at end of 3rd row. **Turn. 4th row:** Attach Spanish Red to first dc, ch 4, * dc in next dc, ch 1. Repeat from * across, ending as before. Break off and turn. **5th, 6th and 7th rows:** Attach Yellow and work in pattern. Break off at end of 7th row. **8th to 15th rows incl:** Make 2 rows of Black, 1 Yellow, 2 Black, 1 Yellow, 2 Black. The 1st to 15th rows establish color pattern. Repeat these colors until 67 rows are completed, ending with 7th row.

WEAVING . . . Cut 8 strands of Yellow each 24 inches long. Weave these strands through first row of sps on long side of mat. Make a knot at each end, leaving enough free for fringe. Make 3 more Yellow stripes, 1 Red, 4 Yellow, 3 Black, 1 Yellow, 3 Black, 1 Yellow, 3 Black. Repeat these 20 stripes until all sps have been filled. Trim fringe evenly on both ends. Cut a piece of felt slightly smaller than mat. Sew in place for lining.

POT HOLDER . . . Starting at bottom with Black, ch 74. **1st row:** Repeat 1st row of Place Mat. Break off (35 sps). **2nd, 3rd and 4th rows:** Attach Yellow and work in pattern. Break off at end of 4th row. Work in color pattern as for Place Mat until 24 rows are completed, ending with a Black row. Break off.

Cut 8 strands of Black, 12 inches

long. Weave through 1st row of sps on long side of pot holder. Knot ends for fringe as before. Make 2 more Black stripes, 4 Yellow, 1 Red, 4 Yellow, 3 Black, 1 Yellow, 3 Black, 1 Yellow, 3 Black, 4 Yellow, 1 Red, 4 Yellow and 3 Black. Trim fringe evenly. Line as for Place Mat. With Red sc closely around bone ring. Join and break off. Sew in place on pot holder.

Black, pick up Green, sc in next 5 ch, drop Green, pick up Black, sc in next 2 ch. Repeat from * across, ending with 2 Green sc. Ch 1, turn. Starting with 2nd row follow chart to C. Follow chart from B to C 2 more times, then follow chart from B back to A. Break off.

Embroider White cross lines in chain st through center of Green sections and Spanish Red through center of Blue sections. Cut felt lining to size and sew in place. With Hunter's Green, sc closely around bone ring. Join and break off. Sew to corner.

Tartan . . . S-88

MATERIALS:

J. & P. Coats "Knit-Cro-Sheen," Art. A.64, 1 ball each of No. 48 Hunter's Green, No. 68 Skipper Blue and No. 12 Black and a few yards of No. 126 Spanish Red and No. 1 White; or

Clark's O.N.T. Mercerized Bedspread Cotton, Art. B.504, colors of your own choice; or

J. & P. Coats or Clark's O.N.T. Pearl Cotton, Art. A. or B.19, Size 5, 4 balls each of No. 48 Hunter's Green, No. 108 Steel Blue and No. 12 Black and a few yards of No. 126 Spanish Red and No. 1 White.

Milwards Steel Crochet Hook No. 7.
An 8-inch square of green felt.

A bone ring.

Starting at A on chart with Hunter's Green, ch 70. **1st row:** Sc in 2nd ch from hook, insert hook in next ch, draw loop through, drop Green, pick up Black and draw through remaining 2 loops on hook, thus changing color (always change color in this manner); working over unused color in order to conceal it, sc in next 2 ch, * drop

Tartan . . . S-90

MATERIALS:

J. & P. Coats "Knit-Cro-Sheen," Art. A.64, 1 ball each of No. 68 Skipper Blue and No. 126 Spanish Red and a few yards of No. 1 White; or

Clark's O.N.T. Mercerized Bedspread Cotton, Art. B.504, colors of your own choice; or

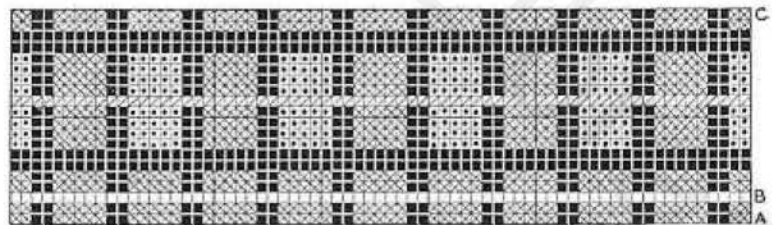
J. & P. Coats or Clark's O.N.T. Pearl Cotton, Art. A. or B.19, 4 balls each of No. 68 Skipper Blue and No. 126 Spanish Red and a few yards of White.

Milwards Steel Crochet Hook No. 7.
An 8-inch square of blue felt.

A bone ring.

Starting at A on chart with Spanish Red, ch 78. **1st row:** Sc in 2nd ch from hook and in next 7 ch, insert hook in next ch, draw loop through, * drop Red, pick up Skipper Blue, draw through remaining 2 loops on

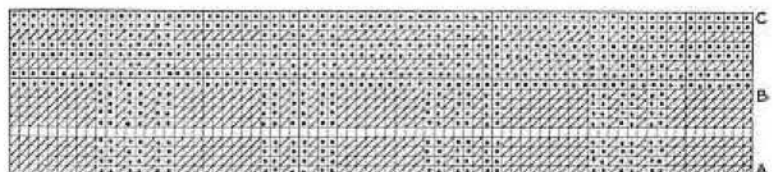
Continued on page 11



■ BLACK □ HUNTER'S GREEN □ SKIPPER BLUE □ SPANISH RED □ WHITE

Chart for Tartan Pot Holder S-88

Chart for Tartan Pot Holder S-90



□ SKIPPER BLUE □ SPANISH RED □ WHITE

S-90 *Continued from page 10*

hook, thus changing color (always change color in this manner); working over unused color make sc in next 2 ch, (drop Blue, pick up Red, sc in next ch, drop Red, pick up Blue, sc in next 2 ch) twice; drop Blue, pick up Red, sc in next 9 ch. Repeat from * across. Ch 1, turn. Starting with 2nd row follow chart to C. Repeat chart from A to C 3 more times, then follow chart from B back to A. Break off.

Embroider White cross lines in chain st through center of each Red section. Line with felt. With Red sc closely around bone ring. Join and break off. Sew to corner.

Tartan . . . S-89

MATERIALS:

J. & P. Coats "Knit-Cro-Sheen," Art. A.64, 1 ball each of No. 48 Hunter's Green and No. 12 Black and a few yards of No. 126 Spanish Red and No. 1 White; or

Clark's O.N.T. Mercerized Bedspread Cotton, Art. B.504, colors of your own choice; or

J. & P. Coats or Clark's O.N.T. Pearl Cotton, Art. A. or B.19, Size 5, 4 balls each of No. 48 Hunter's Green and No. 12 Black and a few yards of No. 126 Spanish Red and No. 1 White.

Milwards Steel Crochet Hook No. 7.

An 8-inch square of green felt.

A bone ring.

Starting at A on chart with Hunter's Green, ch 70. 1st row: Sc in 2nd ch

from hook and in next 7 ch, insert hook in next ch, draw loop through, * drop Green, pick up Black, draw through remaining loops on hook, thus changing color (always change color in this manner); working over unused color, make sc in next 5 ch, drop Black, pick up Green and sc in next ch, drop Green, pick up Black, sc in next 5 ch, drop Black, pick up Green, sc in next 9 ch. Repeat from * across. Ch 1, turn. Starting with 2nd row follow chart to C. Repeat chart from A to C 2 more times, then follow chart from B back to A. Break off.

Embroider White cross bars in chain st through center of each Green section and Spanish Red cross bars through each Black section. Cut felt lining slightly larger than pot holder. Pink around edges and sew in place. With Green, sc closely around bone ring. Join and break off. Sew to corner.

Tartan . . . S-91

MATERIALS:

J. & P. Coats "Knit-Cro-Sheen," Art. A.64, 1 ball each of No. 48 Hunter's Green and No. 126 Spanish Red and a few yards of No. 43 Dk. Yellow and No. 1 White; or

Clark's O.N.T. Mercerized Bedspread Cotton, Art. B.504, colors of your own choice; or

J. & P. Coats or Clark's O.N.T. Pearl Cotton, Art. A. or B.19, Size 5, 4 balls each of No. 48 Hunter's Green and No. 126 Spanish Red and a few yards of No. 43 Dk. Yellow and No. 1 White.

Milwards Steel Crochet Hook No. 7.

An 8-inch square of red felt.

A bone ring.

Starting at A on chart with Hunter's Green, ch 73. 1st row: Sc in 2nd ch from hook and in each ch across. Ch 1, turn. 2nd, 3rd and 4th rows: Sc in each sc across. Ch 1, turn. 5th row: Sc in first 3 sc, insert hook in next sc, draw loop through, drop Green, attach Spanish Red, draw through remaining 2 loops on hook, thus changing color (always change color in this manner); working over unused color, * sc in next sc, drop Red, pick up Green, sc in next sc, drop Green, pick up Red, sc in next 9 sc, drop Red, pick up Green, sc in next sc, drop Green, pick up Red, sc in next sc, drop Red, pick up Green, sc in next 4 sc, drop Green, pick up Red. Repeat from * across, ending with 4 Green sc. Ch 1, turn. Starting with 6th row follow chart to B. Repeat chart from A to B once more, then repeat first 4 rows. Break off.

Embroider White cross lines in chain st through center of each Red section. Cut red felt 1/4 inch larger than pot holder. Pink around edges and sew in place. With Red sc closely around bone ring. Join and break off. Sew to corner.

Pisces Pot Holder S-85

Continued from page 3

hook the last loop of each dc make dc in side of next half dc, in same ch as half dc and in next ch, thread over and draw through all loops on hook (cluster made), half dc in next ch, 2 half dc in next ch, dc in next 26 ch, half dc in next 2 ch, sc in next 3 ch. Turn. 2nd row: 2 sc in first sc, half dc in next 2 sts, dc in next 17 dc, half dc in next 2 sts, sc in next 2 sts, sl st in next st. Turn. 3rd row: Sl st in first sc, sc in next 2 sts, half dc in next 5 sts, dc in next 11 sts, half dc in next 3 sts, sc in next 3 sts. Break off, do not turn. 4th row: Attach thread to first dc, sc in same place, ch 4, sc in last sc made, (sc in next 2 dc, ch 4, sc in last sc made) twice; sc in next dc. Break off. Next row: Attach thread to head end on opposite side of starting chain, ch 2, 2 half dc in first ch, sc in next 5 ch, (ch 3, sc in last sc made, skip 1 ch, sc in next ch) 3 times; * sc in next 6 ch, skip 1 ch. Repeat from * across, ending with sc in last ch. Break off.

WAVES . . . With Black make a chain 3 1/2 inches long, sc in 2nd ch from hook and in each ch across. Break off. Make another wave 2 inches long and one 1 1/4 inches long. Sew in place on pot holder. With Black, embroider letters in chain st. Cut a piece of felt slightly smaller than pot holder. Sew to back.

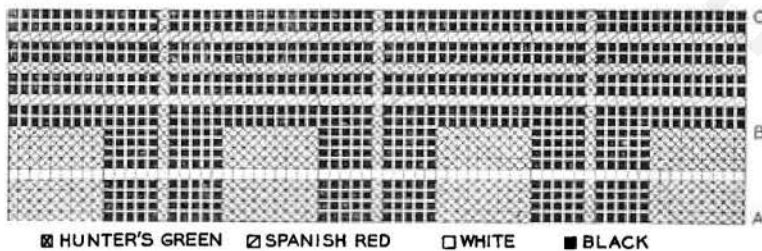
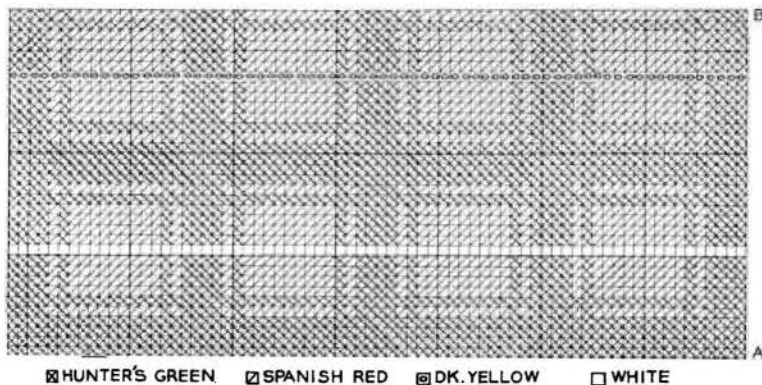


Chart for Tartan Pot Holder S-89

Chart for Tartan Pot Holder S-91



Tumbling Block Hot Plate Mat, Platter Mat and Pot Holder S-75

MATERIALS:

J. & P. Coats "Knit-Cro-Sheen," Art. A.64, 3 balls each of No. 25 Crystal Blue and No. 68 Skipper Blue and 2 balls of No. 70 Blue Jewel; or

Clark's O.N.T. Mercerized Bedspread Cotton, Art. B.504, colors of your own choice; or

J. & P. Coats or Clark's O.N.T. Pearl Cotton, Art. A. or B.19, Size 5, 12 balls each of No. 7 Lt. Blue and No. 108 Steel Blue and 7 balls of No. 8 Blue.

Milwards Steel Crochet Hook No. 1.

½ yard of white felt for lining.

A bone ring.

PLATTER MAT—Strip (Make 6)

... Starting at narrow end with Crystal Blue, ch 23. **1st row:** Dc in 4th ch from hook and in each ch across to within last 2 ch; holding back on hook the last loop of each dc, make dc in next 2 ch, thread over and draw through all loops on hook (1 dc decreased). Ch 3, turn. **2nd row:** Skip first dc, dec 1 dc, dc in each dc across, 2 dc in top of turning chain. Ch 3, turn. **3rd row:** Dc in first dc (1 st increased), dc in each st across to

within last 2 sts, dec 1 dc. Ch 3, turn. **4th and 5th rows:** Repeat 2nd and 3rd rows. **6th row:** Repeat 2nd row. Break off. **7th row:** Attach Skipper Blue to back loop of last dc made, ch 3 and, working in back loop only of each dc, dec 1 dc, dc in each dc across, 2 dc in top of turning chain. Ch 3, turn. **8th row:** Repeat 3rd row. **9th to 12th rows incl:** Repeat 2nd and 3rd rows alternately. Break off at end of 12th row. **13th row:** Attach Crystal Blue to last dc made, ch 3, dc in same dc, dc in each dc across to within last 2 sts, dec 1 dc. Ch 3, turn. Work in pattern until there are 3 Crystal Blue and 3 Skipper Blue sections. Break off.

SET OF THREE DIAMONDS (Make 3)

... Starting at point with Blue Jewel, ch 4. **1st row:** 2 dc in 4th ch from hook. Ch 3, turn. **2nd row:** Dc in first dc, dc in next dc, 2 dc in top of turning chain. Ch 3, turn. **3rd to 6th rows incl:** Dc in first dc, dc in each dc across, 2 dc in top of turning chain. Ch 3, turn. **7th to 11th rows incl:** Skip first dc, dec 1 dc, dc in each dc across to within last 2 sts, dec 1 dc. Ch 3, turn. **12th row:** Skip first dc, dec 1 dc. Ch 3, turn. **13th row:** 2 dc in point. Ch 3, turn. Repeat 2nd to 13th rows incl until 3 diamonds are completed, ending with 12th row. Break off.

SET OF TWO DIAMONDS AND TWO TRIANGLES (Make 2)

... Starting at narrow edge with Blue Jewel, ch 15. **1st row:** Dc in 4th ch from hook, dec 1 dc, dc in each ch across to within last 2 ch, dec 1 dc. Ch 3, turn. **2nd row:** Skip first dc, dec 1 dc, dc in each dc across to within last 2 sts, dec 1 dc. Ch 3, turn. Continue working as for diamonds until 2 triangles and 2 diamonds are completed. Place strips so that the starting chains of 1st, 3rd and 5th strips are facing. Place sets of diamonds and triangles between strips to fit (see illustration). Sew pieces in place.

HOT PLATE MAT ... Work as for Platter Mat, making 4 strips, 2 sets of diamonds and 3 sets of two diamonds and 2 triangles. Complete as for Platter Mat.

POT HOLDER ... Make 2 strips as for Platter Mat, having 2 Crystal Blue and 2 Skipper Blue sections. Make 2 sets of 2 diamonds and 1 set of 1 diamond and 2 triangles. Complete as for Platter Mat.

Trace outline of each piece on felt. Cut felt slightly smaller than outline. Sew neatly in place. With Skipper Blue, sc closely around bone ring. Join and break off. Sew to corner of pot holder.

Tomato ... S-83

MATERIALS:

Clark's Big Ball Mercerized Crochet, Art. B.34, Size 20, 2 balls of No. 123-A Flamingo and 1 ball of No. 48 Hunter's Green.

Milwards Steel Crochet Hook No. 4.

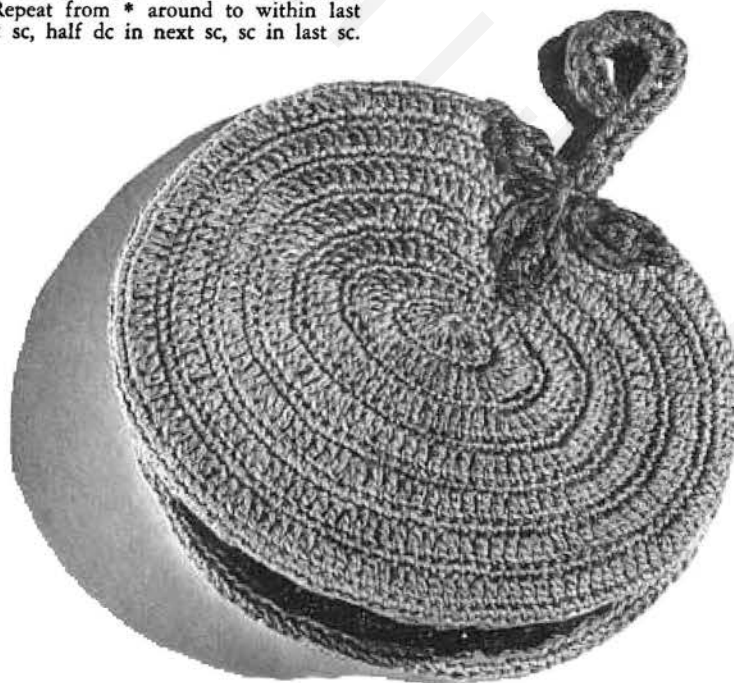
Red felt for lining.

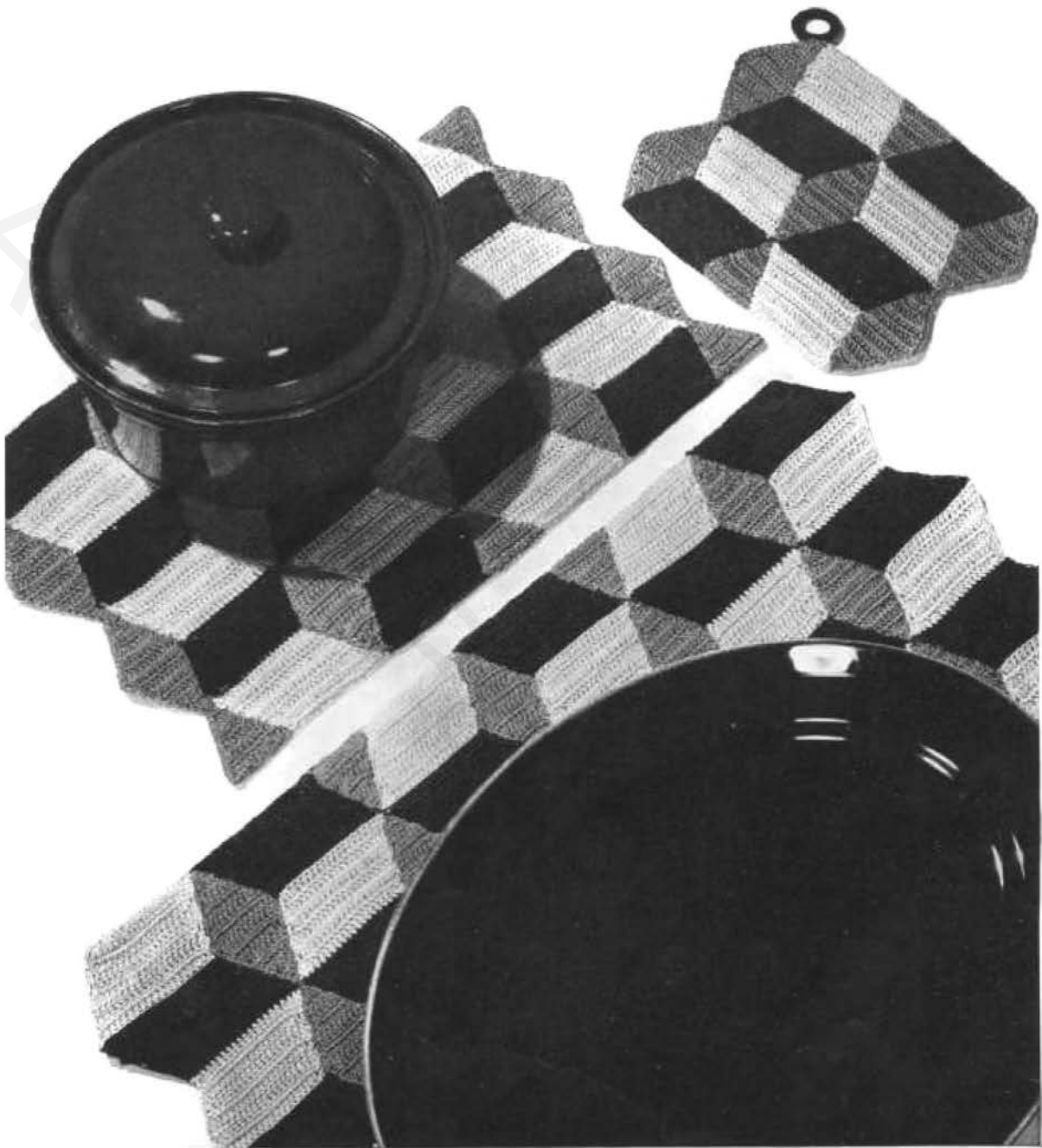
TOMATO ... Starting at center with double strand of Flamingo, ch 2. **1st rnd:** In 2nd ch from hook make sc, half dc, dc, 3 tr, 5 dc, 3 tr, dc, half dc and sc. Join with sl st to first sc. **2nd rnd:** Ch 1, 2 sc in each st around. Join. **3rd rnd:** Ch 1, sc in same place as sl st, half dc in next sc, dc in next sc, 2 dc in next sc, dc in next sc, tr in next 3 sc, * dc in next 2 sc, 2 dc in next sc. Repeat from * around to within last 8 sc, tr in next 3 sc, dc in next sc, 2 dc in next sc, half dc in next sc, sc in last sc. Join. **4th rnd:** Ch 1, sc in same place as sl st, * 2 sc in next st, sc in next 2 sts. Repeat from * around. Join. **5th rnd:** Ch 1, sc in same place as sl st, half dc in next sc, * 2 dc in next sc,

dc in next 2 sc. Repeat from * around to within last 2 sc, half dc in next sc, sc in last sc. Join. **6th rnd:** Ch 1, sc in same place as sl st and in each st around. Join. **7th rnd:** Ch 1, sc in same place as sl st, half dc in next sc, * 2 dc in next sc, dc in next 3 sc. Repeat from * around to within last 2 sc, half dc in next sc, sc in last sc.

Join. **8th rnd:** Repeat 6th rnd. **9th rnd:** Ch 1, sc in same place as sl st, half dc in next sc, 2 dc in next sc, (dc in next sc, 2 dc in next sc) 3 times; * dc in next 4 sc, 2 dc in

Continued on page 13





S-83 *Continued from page 12*

next sc. Repeat from * around to within last 9 sc, (2 dc in next sc, dc in next sc) 3 times; 2 dc in next sc, half dc in next sc, sc in last sc. Join. **10th rnd:** Repeat 6th rnd. **11th rnd:** Ch 1, sc in same place as sl st, half dc in next sc, 2 dc in next sc, (dc in next sc, 2 dc in next sc) 5 times; * dc in next 5 sc, 2 dc in next sc. Repeat from * around to within last 13 sc, (2 dc in next sc, dc in next sc) 5 times; 2 dc in next sc, half dc in next sc, sc in last sc. Join. **12th rnd:** Repeat

6th rnd. **13th rnd:** Ch 1, sc in same place as sl st, half dc in next sc, 2 dc in next sc, (dc in next sc, 2 dc in next sc) 5 times; * dc in next 6 sc, 2 dc in next sc. Repeat from * around to within last 13 sc, (2 dc in next sc, dc in next sc) 5 times; 2 dc in next sc, half dc in next sc, sc in last sc. Join. **14th rnd:** Repeat 6th rnd. **15th rnd:** Sc in back loop of each sc around. Join and break off. Make another piece the same way.

LEAF AND STEM (Make 2) . . .
With 4 strands of Hunter's Green,

ch 6, d tr in 6th ch from hook, ch 3, sl st in 3rd ch from hook (picot made), ch 5, sc in same ch as d tr was made, (ch 5, d tr in same ch as last d tr was made, picot, ch 5, sc in same ch as last d tr was made) twice; ch 25, sc in 2nd ch from hook and in next 16 ch, sl st in side of first sc made on stem, sc in each remaining ch, sl st in base of leaf. Break off.

Sew Leaves in place. Sew stem together. Cut a piece of felt slightly smaller than each pot holder piece. Sew in place. Sew pot holder together, joining 4 inches across top.

Chicken . . . S-73

Illustrated on Front Cover

MATERIALS:

J. & P. Coats "Knit-Cro-Sheen," Art. A.64, 1 ball each of No. 78 Turquoise and No. 32 Purple and a few yards of No. 126 Spanish Red and No. 12 Black; or

Clark's O.N.T. Mercerized Bedspread Cotton, Art. B.504, colors of your own choice; or

J. & P. Coats or Clark's O.N.T. Pearl Cotton, Art. A. or B.19, Size 5, 4 balls of No. 24-D Aqua, 2 balls of No. 18-D Shaded Dk. Purples and a few yards of No. 126 Spanish Red and No. 12 Black.

Milwards Steel Crochet Hook No. 7.

Felt lining. A bone ring.

BODY . . . Starting at top with Turquoise, ch 68. **1st row:** Sc in 2nd ch from hook, * skip 2 ch, 5 dc in next ch (shell made), skip 2 ch, sc in next ch. Repeat from * across. Ch 3, turn. **2nd row:** * Sc in center dc of next shell, shell in back loop of next sc. Repeat from * across, ending with 3 dc in back loop of last sc (half shell made). Ch 1, turn. **3rd and 4th rows:** Sc in first dc, * shell in back loop of next sc, sc in center dc of next shell. Repeat from * across, ending with half shell in back loop of last sc. **5th row:** Sc in first dc, * shell in back loop of next sc, sc in center dc of next shell. Repeat from * across, ending with sc in center dc of last shell. Ch 3, turn. **6th to 9th rows incl:** Repeat 2nd to 5th rows incl. **10th row:** * Sc in center dc of next shell, shell in back loop of next sc. Repeat from * across, ending with 2 dc in back loop of last sc. Ch 1, turn. **11th row:** Sc in first dc, * shell in back loop of next sc, sc in center dc of next shell. Repeat from * across, ending with sc in last shell. Ch 3, turn. **12th row:** * Sc in center dc of next shell, shell in back loop of next sc. Repeat from * across, ending with sc in center dc of last shell. Ch 3, turn. **13th row:** Dc in first sc, * sc in center dc of next shell, shell in back loop of next sc. Repeat from * across, ending with sc in last shell. Ch 3, turn. **14th row:** * Sc in center dc of next shell, shell in back loop of next sc. Repeat from * across, ending with sc in top of turning chain. Ch 3, turn. **15th, 16th and 17th rows:** * Sc in center dc of next shell, shell in back loop of next sc. Repeat from * across, ending with sc in center dc of last shell. Ch 3, turn. Break off at end of 17th row. Attach Turquoise to first sc on first row and, working over rounded end, sc closely across to opposite end of first row. Break off. **Next row:** Attach Purple to first sc on rounded end of body, ch 2, half dc in next 9 sc, dc in next 24 sc, half dc in next 3 sc, sc in next 3 sc. Break off. **Following row:**

Attach Black to first half dc, sc in same half dc and in each Purple st across, sc in next 5 Turquoise sc. Break off.

HEAD . . . Starting at center with Turquoise, ch 5. Join with sl st to form ring. **1st rnd:** Ch 3, 14 dc in ring. Join with sl st to top of ch-3. Ch 3, turn. **2nd rnd:** Dc in same place as sl st, 2 dc in each dc around. Join. Ch 3, turn. **3rd rnd:** Dc in same place as sl st, * dc in next dc, 2 dc in next dc. Repeat from * around. Join and turn (45 dc). **4th rnd:** Sc in same place as sl st, sc in next 34 dc, half dc in same place as last sc, half dc in next dc, dc in next 9 dc, sl st in first sc. Ch 4, turn.

To Shape Neck: **1st row:** Tr in first dc, tr in next dc, dc in next dc, half dc in next dc, sc in next 7 sts. Ch 3, turn. **2nd row:** Skip first sc, dc in next 5 sc, tr in next 5 sts and in top of turning chain. Ch 4, turn. **3rd row:** Make tr and dc in first tr, dc in next 2 sts, half dc in next 4 sts, sc in each remaining st and in top of turning chain. Break off (long side is back of neck).

COMB . . . 1st row: Skip 3 sc on Head from back of neck. Attach Spanish Red to next sc, 2 sc in same sc, sc in next sc, half dc in next sc, (dc in next sc, 2 dc in next sc) 6 times. Ch 2, turn. **2nd row:** 2 sc in 2nd ch from hook, skip first dc, sc in next dc, * ch 2, 2 sc in 2nd ch from hook, skip next st, sc in next st. Repeat from * across Comb. Break off.

BEAK . . . 1st row: Leaving 8 sc free following Comb, attach Black to next sc. Ch 3, dc in next 3 sc. Ch 3, turn. **2nd row:** Skip first dc, holding back on hook the last loop of each dc make dc in next 2 dc, thread over and draw through all loops on hook (cluster made), dc in top of starting chain. Ch 3, turn. **3rd row:** Skip first dc, make a cluster over next dc and in top of turning chain. Break off.

Sew Head to Body.

EYE . . . With Black, ch 2, 10 sc in 2nd ch from hook. Join and break off. Sew in place.

WING . . . Starting at pointed end with Purple, ch 4. **1st row:** 2 dc in 4th ch from hook. Ch 3, turn. **2nd row:** Dc in first dc, 3 dc in next dc, 2 dc in top of starting chain. Ch 3, turn. **3rd to 6th rows incl:** Skip first dc, dc in each dc across, making 3 dc in center dc of 3 dc group, dc in top of turning chain. Ch 3, turn. **7th, 8th and 9th rows:** Skip first dc, dc in each dc across, dc in top of turning chain. Ch 3, turn. **10th and 11th rows:** Skip first dc, work off next 3 dc as 1 dc, dc in each dc across to within last 2 dc and turning chain; work off last 3 dc as 1 dc. Ch 3, turn. Ch 1 to turn at end of 11th row. **12th row:** Work off first 2 sc as 1 sc, sc in each dc across to within last 2 dc, work off last 2 sc as 1 sc. Break off.

TRIM . . . With Black (ch 16, sc in 2nd ch from hook and in each ch across) 3 times. Break off. Sew to Wing and sew Wing in place.

Trace outline of chicken on felt. Cut felt slightly smaller than pot holder. Sew in place. Make another Body, Head and Wing the same way. Join pieces by sewing across top of back, around head and down 2 inches of front. With Turquoise, sc closely around bone ring. Join and break off. Sew to back.

Squash . . . S-80

Illustrated on Front Cover

MATERIALS:

J. & P. Coats "Knit-Cro-Sheen," Art. A.64, 1 ball each of No. 43 Dk. Yellow and No. 48 Hunter's Green; or

Clark's O.N.T. Mercerized Bedspread Cotton, Art. B.504, colors of your own choice; or

J. & P. Coats or Clark's O.N.T. Pearl Cotton, Art. A. or B.19, Size 5, 4 balls of No. 11 Orange and 1 ball of No. 48 Hunter's Green.

Milwards Steel Crochet Hook No. 7.

A piece of felt for lining

Starting at inner edge with Dk. Yellow (or Orange), ch 43. **1st row:** Dc in 4th ch from hook and in next 30 ch, increasing 3 dc evenly across—to inc 1 dc, make 2 dc in 1 ch—half dc in next 2 ch, sc in next 6 ch, 2 sc in next ch. Ch 1, turn. **2nd row:** 2 sc in first sc, sc in each st across making 2 sc in top of starting chain. Ch 4, turn. **3rd row:** 2 tr in first sc, tr in next 3 sc, (2 tr in next sc, tr in next 2 sc) twice; 2 tr in next sc, dc in next 16 sc, half dc in next 4 sc, sc in next 3 sc, 2 sc in next sc, sc in each remaining sc across, 2 sc in last sc. Ch 1, turn. **4th row:** 2 sc in first sc, sc in each st across. Ch 4, turn. **5th row:** Tr in first sc, (tr in next 3 sc, 2 tr in next sc) 4 times; dc in next 19 sc, half dc in next 5 sc, 2 sc in next sc, sc in each remaining sc across, 2 sc in last sc. Ch 1, turn. **6th row:** Sc in first sc, sc in each st across and in top of turning chain. Ch 4, turn. **7th row:** Skip first sc, tr in next 26 sc, increasing 2 tr evenly spaced, dc in next 9 sc increasing 1 dc, half dc in next 9 sc, sc in each remaining sc, 2 sc in last sc. Ch 1, turn. **8th row:** 2 sc in first sc, sc in each st across and in top of turning chain. Ch 4, turn. **9th row:** Skip first sc, dec 1 tr—to dec 1 tr, work off 2 tr as 1 tr—tr in next 32 sc, increasing 4 tr evenly spaced, 2 dc in next sc, dc in next 10 sc, half dc in next 6 sc, 2 half dc in next sc, half dc in next 2 sc, sc in each remaining sc across to within last 2 sc, dec 1 sc. Ch 1, turn. **10th row:** Dec 1 sc, sc in each st across to within last 2 sts, dec 1 st. Ch 4, turn. **11th row:** Skip first sc, dec 1 tr, tr in next 46 sc increasing 7 tr evenly, dc in next sc, 2 half dc in next sc, half dc in next 4 sc, 2 sc in next sc, sc in each remaining sc across to within last 3 sc, dec 1 sc. Ch 1, turn. **12th row:** Dec 1 sc, sc in each sc across, dec 1 sc at end of row. Ch 4,

Continued on page 15

S-80 *Continued from page 14*

turn. **13th row:** Skip first sc, work off next 3 tr as 1 tr, tr in next 40 sc increasing 5 tr evenly, dc in next 10 sc, half dc in next 6 sc, 2 half dc in next sc, sc in each remaining sc to within last 3 sc, dec 1 sc. Ch 1, turn. **14th row:** Dec 1 sc, sc in each st across to within last 13 sts, dec 1 sc, sl st in next st. Turn. **15th row:** Sl st in next 3 sc, sc in next 17 sc, half dc in next 12 sc, dc in next 8 sc, half dc in next 20 sc, sc in next 3 sc, sl st in next sc. Break off. Make another piece the same way.

LEAF (Make 2) . . . Starting at tip with Hunter's Green, ch 4. **1st row:** 2 dc in 4th ch from hook. Ch 3, turn. **2nd row:** Dc in first dc, 3 dc in next dc, 2 dc in top of turning chain. Ch 3, turn. **3rd row:** Dc in first dc, dc in each dc across, making 3 dc in center dc of 3-dc group and 2 dc in top of turning chain. Ch 3, turn. **4th row:** Dc in first dc, half dc in next dc, sc in next 7 dc, half dc in next dc, 2 dc in top of turning chain. Ch 3, turn. **5th row:** Dc in first dc, dc in each st across, 2 dc in top of turning chain. Ch 3, turn. **6th row:** Dc in first dc, half dc in next 3 dc, sc in next 7 dc, half dc in next 3 dc, 2 dc in top of turning chain. Break off. **7th row:** Attach thread to first sc, ch 3, dc in next 6 sc. Ch 3, turn. **8th row:** Skip first dc, dec 1 dc, dc in next dc, dec 1 dc, dc in top of turning chain. Ch 4, turn. **9th row:** Skip first dc, holding back on hook the last loop of each tr make tr in each dc and in top of turning chain, thread over and draw through all loops on hook. Break off.

STEM (Make 2) . . . Starting at long side with Green, ch 41. **1st row:** Sc in 2nd ch from hook, sc in next ch, (ch 3, sc in 2nd ch from hook, sc in next ch, sc in same ch as last sc on foundation chain) twice; half dc in next ch, (dc in next ch, 2 dc in next ch) 17 times; half dc in next ch, sc in next 2 ch. Break off.

Cut a piece of felt slightly smaller than each pot holder piece. Sew in place. Sew pieces together at inner edge and about 1 1/2 inches around small curved end. Sew a leaf to each side. Sew top of stem in place. Curve remainder of stem and sew to pot holder, leaving 2 inches free for loop. Sew free pieces of stem together.

Watermelon...S-78

Continued from page 4

dc, 2 dc in next dc (1 dc increased). Repeat from * around. Join. **4th to 11th rnds incl:** Ch 3, dc in each dc around, increasing 12 dc evenly on each rnd. Join. Break off at end of 11th rnd. **12th rnd:** Attach White to same place as sl st, ch 3, dc in same place, dc in each dc, increasing 12 dc evenly around. Join. **13th rnd:** Repeat 4th rnd. Join and break off. **14th rnd:** Attach Green to same place as sl st, ch 3, dc in each dc around, increasing 12 dc evenly around. Join. **15th rnd:** Repeat 4th rnd. Join and break off.

With Black Embroidery Floss, em-

broider lazy daisy sts over rose section to represent seeds. Cut a piece of felt slightly smaller than pot holder. Sew in place on back. Fold pot holder in half and sew ends together for 1 inch. With Green sc closely around bone ring. Join and break off. Sew to pot holder.



Multicolored Pot Holder...S-77

MATERIALS:

J. & P. Coats or Clark's O.N.T. Pearl Cotton, Art. A. or B.19, Size 5, 1 ball each of No. 18-D Shaded Dk. Purples, No. 46-A Mid Rose, No. 48 Hunter's Green and No. 69 Lt. Steel Blue and a few yards of No. 43 Dk. Yellow (this amount will make 2 pot holders).

Milwards Steel Crochet Hook No. 7.

A piece of blue felt for lining.

A bone ring.

FIRST SECTION . . . Starting at long side with Lt. Steel Blue, ch 57. **1st row:** Dc in 4th ch from hook and in each ch across. Ch 3, turn (55 dc, counting turning chain as 1 dc). **2nd row:** Skip first dc, dc in each dc across and in top of turning chain. Break off. Turn. **3rd row:** Skip first 5 dc, attach Hunter's Green to back loop of next dc, ch 3, dc in back loop of each dc to within last 5 sts. Ch 3, turn. **4th row:**

Repeat 2nd row. **5th row:** Skip first 5 dc, attach Green to next dc and repeat 3rd row. **6th row:** Repeat 2nd row. **7th to 10th rows incl:** Repeat 3rd to 6th rows incl. **11th row:** Skip first 5 dc, attach Yellow to next dc and repeat 3rd row. **12th row:** Repeat 2nd row. Break off. Make another piece, reversing colors on first 10 rows and keeping Yellow on 11th and 12th rows.

SECOND SECTION . . . Work as for First Section having first 2 rows Purple, next 2 rows Mid Rose. Complete as for First Section, changing colors until 10 rows are completed. Make last 2 rows Yellow as before. Make another piece reversing colors and complete as before.

Sew pieces together as in illustration. Cut felt slightly smaller than pot holder. Sew in place. With Green sc closely around bone ring. Join and break off. Sew to corner of pot holder.

ABBREVIATIONS

ch chain	dc . double crochet	sl st . . . slip stitch	st(s) . stitch(es)
sc . . . single crochet	tr treble	pc st . . . popcorn stitch	rnd round
half dc half double crochet	d tr . double treble	sp space	incl inclusive
	tr tr . . triple treble		inc increase
			dec decrease

* (asterisk) . . . Repeat the instructions following the asterisk as many more times as specified, in addition to the original.

Repeat instructions in parentheses as many times as specified. For example: "(Ch 5, sc in next sc) 5 times" means to make all that is in parentheses 5 times in all.

NEW BOOK OF

POT HOLDERS

10¢

and Hot Platter Mats

