

FREE DISTRIBUTION ONLY. NOT FOR SALE

Antique Pattern Library

For more information, please see our website at: <http://www.antiquepatternlibrary.org>

This is a scan of an antique book that is, to the best of our knowledge, in the public domain. The scan itself has been edited for readability, and is licensed under the **Creative Commons** Attribution-NonCommercial-ShareAlike License. To view a copy of this license, visit <http://creativecommons.org/licenses/by-nc-sa/2.5/> or send a letter to Creative Commons, 559 Nathan Abbott Way, Stanford, California 94305, USA.

You may share copies or printouts of this scan freely. You may not sell copies or printouts.

Antique Pattern Library is a project of New Media Arts, Inc. <http://www.newmediaarts.org>, a nonprofit organization tax-exempt under IRC 501(c)(3). Donations may be tax deductible, depending on your tax status and tax jurisdiction.

Donated by

Sytske Wijnsma 2011

RIBBON ART

How to make
Hundreds of
Dainty and
Practical things
of Ribbons

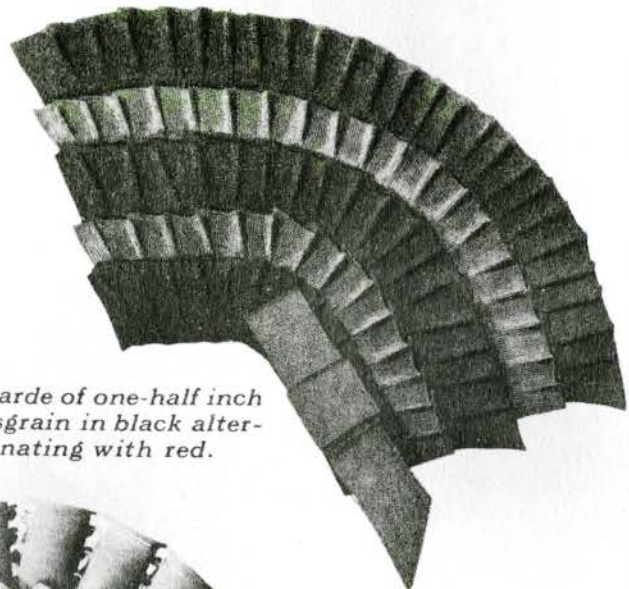
*Illustrated in Colors
with detailed
Instructions*

10¢

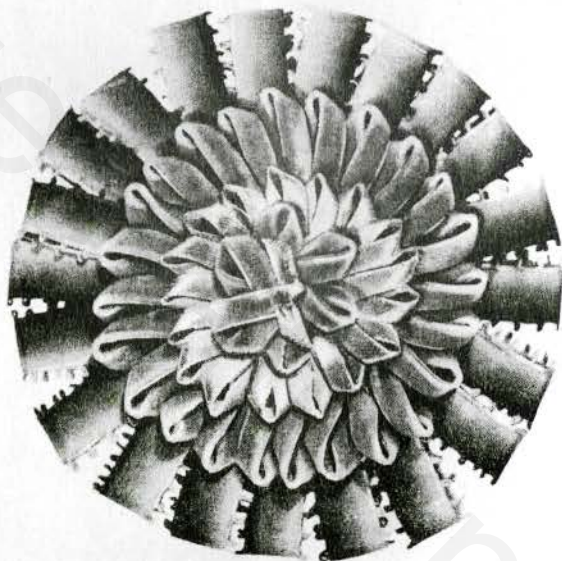




The newest hat ornament, 8 inches high, made of six inch ribbon.

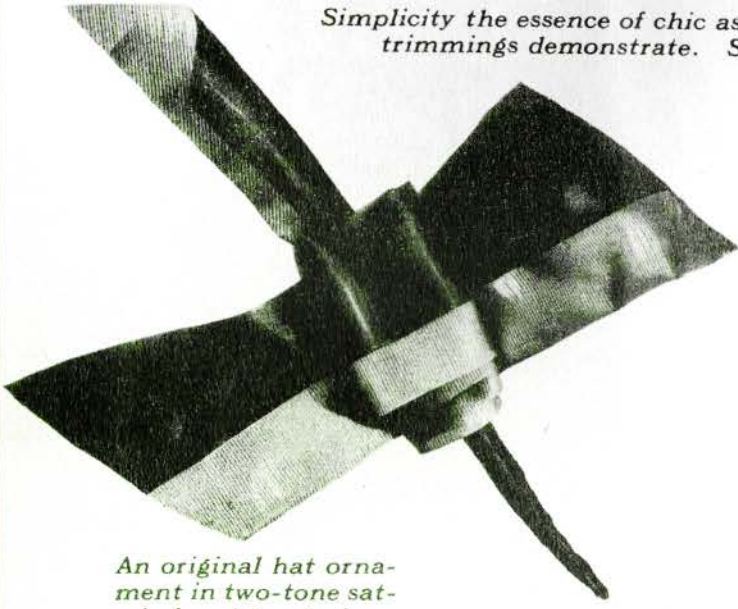


Cocarde of one-half inch grosgrain in black alternating with red.

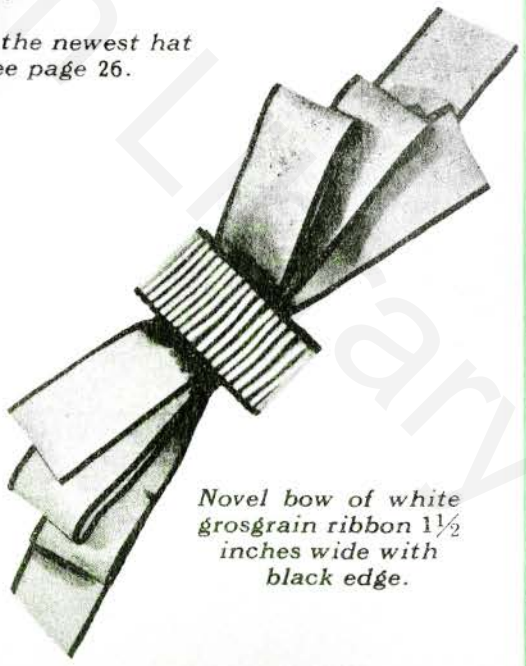


For hat or gown, ombre picot with narrow velvet and silver ribbons.

Simplicity the essence of chic as the newest hat trimmings demonstrate. See page 26.



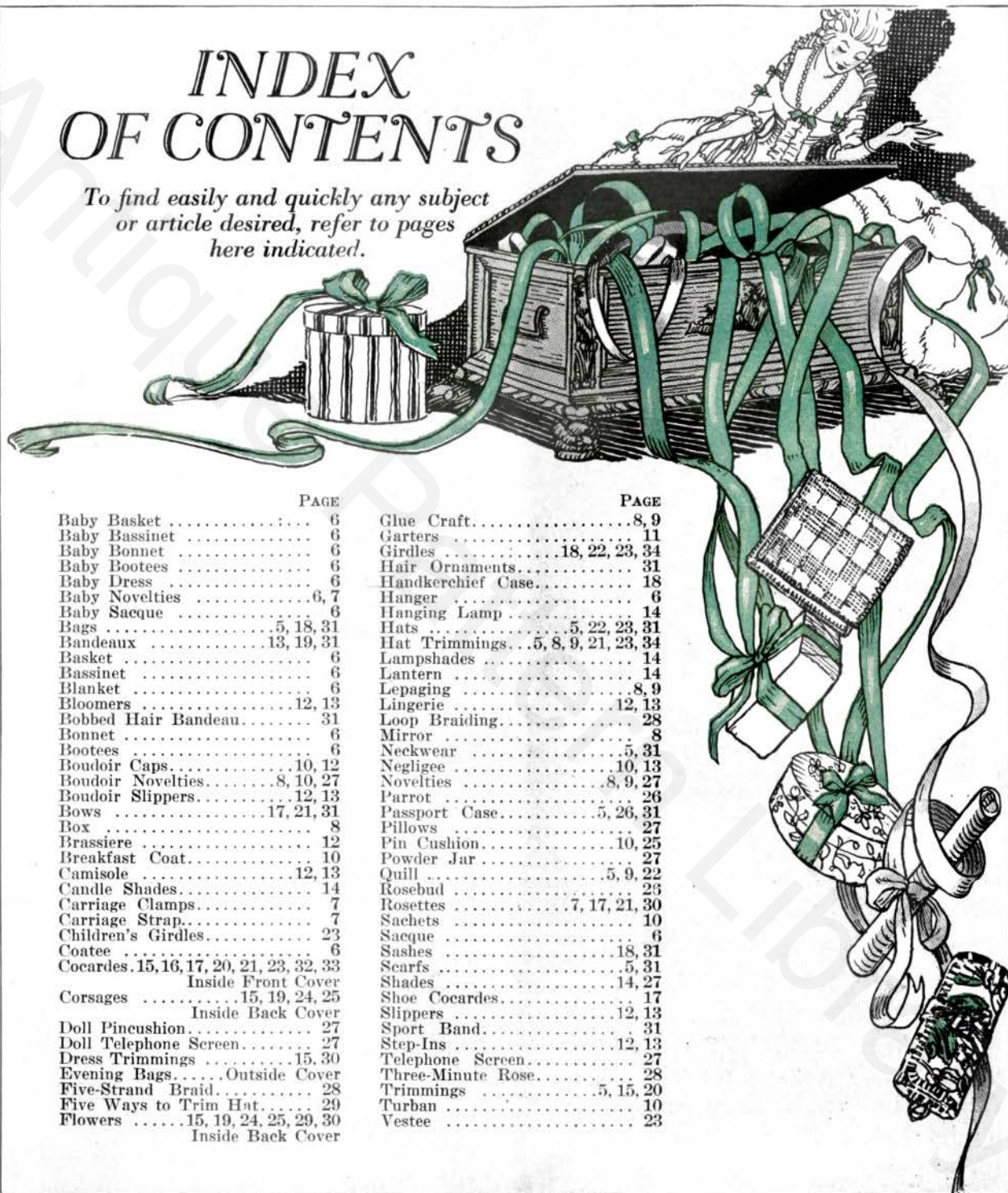
An original hat ornament in two-tone satin faced grosgrain.



Novel bow of white grosgrain ribbon 1½ inches wide with black edge.

INDEX OF CONTENTS

To find easily and quickly any subject or article desired, refer to pages here indicated.



PAGE	PAGE
Baby Basket 6	Glue Craft 8, 9
Baby Bassinet 6	Garters 11
Baby Bonnet 6	Girdles 18, 22, 23, 34
Baby Booties 6	Hair Ornaments 31
Baby Dress 6	Handkerchief Case 18
Baby Novelties 6, 7	Hanger 6
Baby Sacque 6	Hanging Lamp 14
Bags 5, 18, 31	Hats 5, 22, 23, 31
Bandeaux 13, 19, 31	Hat Trimmings 5, 8, 9, 21, 23, 34
Basket 6	Lampshades 14
Bassinet 6	Lantern 14
Blanket 6	Lepaging 8, 9
Bloomers 12, 13	Lingerie 12, 13
Bobbed Hair Bandeau 31	Loop Braiding 28
Bonnet 6	Mirror 8
Bootees 6	Neckwear 5, 31
Boudoir Caps 10, 12	Neglige 10, 13
Boudoir Novelties 8, 10, 27	Novelties 8, 9, 27
Boudoir Slippers 12, 13	Parrot 26
Bows 17, 21, 31	Passport Case 5, 26, 31
Box 8	Pillows 27
Brassiere 12	Pin Cushion 10, 25
Breakfast Coat 10	Powder Jar 27
Camisole 12, 13	Quill 5, 9, 22
Candle Shades 14	Rosebud 25
Carriage Clamps 7	Rosettes 7, 17, 21, 30
Carriage Strap 7	Sachets 10
Children's Girdles 23	Sacque 6
Coatee 6	Sashes 18, 31
Cocarde 15, 16, 17, 20, 21, 23, 32, 33	Scarfs 5, 31
Inside Front Cover	Shades 14, 27
Corsages 15, 19, 24, 25	Shoe Cocarde 17
Inside Back Cover	Slippers 12, 13
Doll Pine cushion 27	Sport Band 31
Doll Telephone Screen 27	Step-Ins 12, 13
Dress Trimmings 15, 30	Telephone Screen 27
Evening Bags Outside Cover	Three-Minute Rose 28
Five-Strand Braid 28	Trimmings 5, 15, 20
Five Ways to Trim Hat 29	Turban 10
Flowers 15, 19, 24, 25, 29, 30	Vestee 23
Inside Back Cover	

<p style="text-align: center;">OFFICERS</p> <p>GEORGE D. HRST, <i>President</i> J. ADAM BERG, <i>Vice-President</i></p>	<p>Endorsed by The Silk Association of America</p> <p>Published by RIBBON ART PUBLISHING COMPANY, Inc. 354 Fourth Avenue, New York, N. Y.</p> <p><i>Application for entry as second-class matter pending</i></p>	<p style="text-align: center;">OFFICERS</p> <p>IRENE L. BLUNT, <i>Secretary and Treasurer</i> VAHRAH CROFT, <i>Editor</i></p>
--	---	--

FASHION *and* RIBBON

MORE and more, the important costume designers and smart interior decorators employ the ever adaptable and colorful ribbon.

TO the return of simple classic lines in dress, we may attribute the increasing appearance of ribbon in fashion.

In accessories to the costume—by way of adding a necessary color note and hint of frivolity, ribbon fills a most important need.

You will find in this book, over a dozen pages of cocardes and trimmings—easily and inexpensively made—which will lend a picturesque quality to the smart gown. And of girdles and corsages there is a wide variety. With a few, simple dark dresses and a half dozen or so of these new accessories, the clever woman can make her costume seem always interesting and different.

For hat trimmings, we are picturing a host of ideas featured by the advance models just now shown in Paris.

These trimmings are essentially simple and therein lies their charm. For a woman with but a slight knack with the needle can make them successfully. And many women will make several trimmings for the one hat—each trimming entirely changing its character.

On page 29 are shown five ways to trim one hat. And you could multiply the five ways five times without exhausting the ribbon-trimming possibilities.



Purses—bandeaux—hair ornaments—scarfs—shoe cocardes—all have been executed for costume effect.

We have endeavored in this book to feature only those that can be made without difficulty and that have definite claims to lasting smartness. It is by such accessories as these that the wisely dressed woman wins and holds her reputation for smartness.

In baby things, in boudoir luxuries, and in lingerie, ribbon is more than a fashion. The newest ideas which the exclusive shops are continually originating—the clever, unusual thoughts—we are illustrating here in great profusion. They make charming gifts and proud possessions.

For the lamp shades and cushions and various articles of home decoration featured in the following pages, we sought out the smartest interior decorators. It is their opinion that ribbon because of its color value and texture sympathy is the most artistic medium in which to develop the accessories which give a personal touch to the home.

To women who want color and interest in their apparel and clothing, who wish to influence their children's lives by tasteful surroundings, this book is dedicated. It is published with the hope that it may prove to be a practical help and inspiration to those in the quest of beauty.

RIBBON IS THEIR CROWNING GLORY



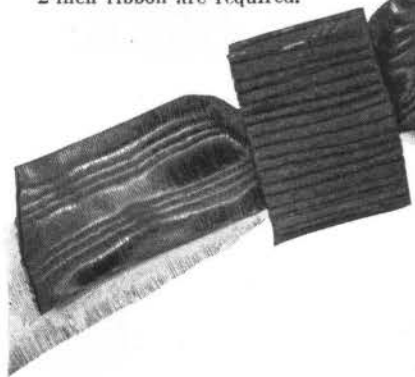
The trimming of the hat above is developed in blue $2\frac{1}{2}$ -inch grosgrain ribbon combined with Roman striped ribbon $1\frac{1}{2}$ inches wide. Directions given for Fig. B on page 30 may be followed for making the several groups of pointed petals. The striped ribbon is loosely knotted in the front and on the sides and attached to the foundation. The ends form a band in the back. $2\frac{3}{4}$ yards of $2\frac{1}{2}$ inch grosgrain and $3\frac{3}{4}$ yards of Roman stripe are required.



The quill-like trimming above is developed in $\frac{3}{4}$ -inch moire ribbon. Cut a piece of buckram the desired size, about 9 inches long and 3 inches wide. Cover the entire surface with overlapping 1-inch loops in 5 perpendicular rows. Start with middle row at apex and work down to base. Do not cut ribbon between loops. The feather bone forming the end is wound with ribbon. 7 yards of $\frac{3}{4}$ -inch ribbon are required.



The chic cocarde below is made exactly like the one on the middle figure. It is developed in 2-inch moire belting, black combined with white. $1\frac{3}{4}$ yards of 2-inch ribbon are required.



Above is shown a striking hat trimming, and scarf to match, of ribbon striped in shades of tan, brown and green. Two lengths of ribbon, one 9 and the other 10 inches long are drawn through a small tubular-shaped section made of crinoline covered with cartridge pleats of ribbon. For the scarf 2 yards of wide soft ribbon are required and $2\frac{3}{4}$ yards of 2-inch striped ribbon for trimming the ends. See page 26 for directions for bag.

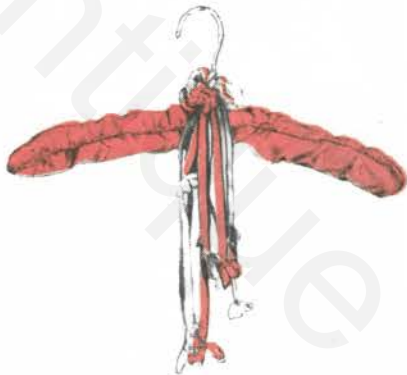


The thistle shaped cocarde above is developed in $\frac{3}{4}$ -inch black grosgrain combined with $\frac{1}{2}$ -inch scarlet plissé for the lower part. Ribbon required $2\frac{3}{4}$ yards of $\frac{3}{4}$ -inch grosgrain and $1\frac{1}{2}$ of $\frac{1}{2}$ inch plissé.

BE-RIBBONED THINGS FOR BABY



Ribbon covered carriage straps are both unique and useful. The one shown above uses 6 yards of 1½-inch ribbon for the shirred strap, rings and bow and ¾ yard elastic.



Pad a wooden hanger with wadding, then cover with 1 yard of 3-inch ribbon for top and bottom to fit shape of hanger. 10 yards of baby ribbon are required for trimming: ½ yard wound around the handle and a large knotted rosette at bottom. 15 streamers are made, varying in size, each knotted at the end.



The dressing basket above requires 4 yards of lace and 2½ yards of insertion; 6 yards of 6-inch satin ribbon; 10 yards of 1½-inch satin ribbon; 20 yards of baby ribbon; 12 yards of ½-inch ribbon for rosebuds and rosettes.

The jacket requires 1¾ yards of 9-inch ribbon; 1¼ yards ½-inch; and 1 yard of baby ribbon for each flower. The cap needs ½ yard 9-inch ribbon; ¾ yard 3-inch ribbon for cuff; 3 yards ½-inch for rosettes and 1 yard baby ribbon for each flower. The dress needs 10 yards ¼-inch two-tone ribbon. Bootees use 2 yards of 1-inch ribbon and 6 yards of baby ribbon.

The blanket is bound with 3¼ yards of 4-inch ribbon. The dainty basket is overflowing with ribbon embroidered flowers with a twisted ribbon for a handle. ½ yard of 2-inch ribbon is needed for bow.



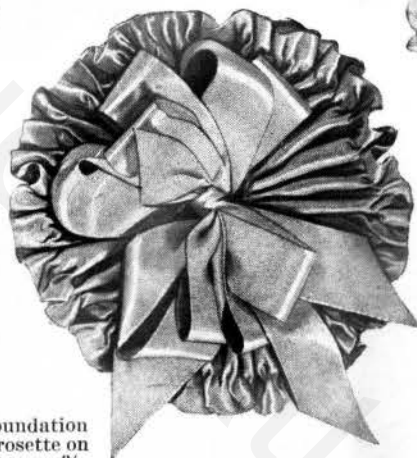
7 yards 5-inch satin ribbon is interwoven at the sides of basket, and 2¼ yards of 9-inch ribbon is used for bows. The hood uses 2 yards of 5-inch ribbon for the frill, and 3 yards 10-inch ribbon is shirred to the hood divisions. 10 yards of the 5-inch ribbon cover a quilted lining, tufted and attached to sides and finished at upper edge with shirred puffing. 8 yards baby ribbon for rosettes and tufts.



DAINTY GIFTS FOR THE LITTLE NEWCOMER



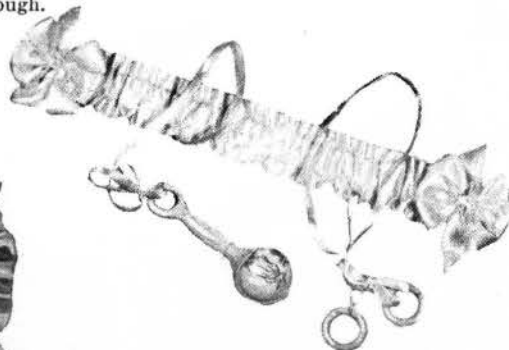
A softly tied ribbon rosette is easily made of loops of ribbon interspersed with knotted loops, and tied at center by a strip of ribbon, securely sewn at back of the bow. 3 1/2 yards of 1-inch ribbon are needed.



The foundation of the rosette on right is a 3/4-yard length of 1 1/2-inch satin ribbon closely shirred into a circle at center and more loosely shirred at 1/4 of inch from outer edge. The several loops and ends are placed directly in the center. 1 yard 1/2-inch ribbon for loops and ends is required.

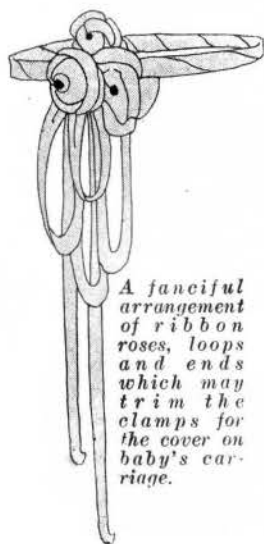


The pretty carriage strap requires 5 yards of 3/4-inch ribbon for the lattice blocking. (See page 30 for lattice directions.) 3 yards of baby ribbon is shirred and outlines each edge. 2 1/2 yards of satin ribbon 1 inch wide for the rosettes, and 2 yards of 3/4-inch for the 4 roses, with same amount for leaves. 1/2 yard of 2 1/2-inch satin ribbon is folded lengthwise, stitched together and used for the back of the strap, 3/4 yard of elastic, 1 inch wide, is pulled through.



The above carriage strap 1 1/8 yards of ribbon cut in half is sewed together lengthwise (see page 11, Diagram III), allowing 1/2 inch top and bottom for ruffling. Pull 3/4-inch elastic through opening.

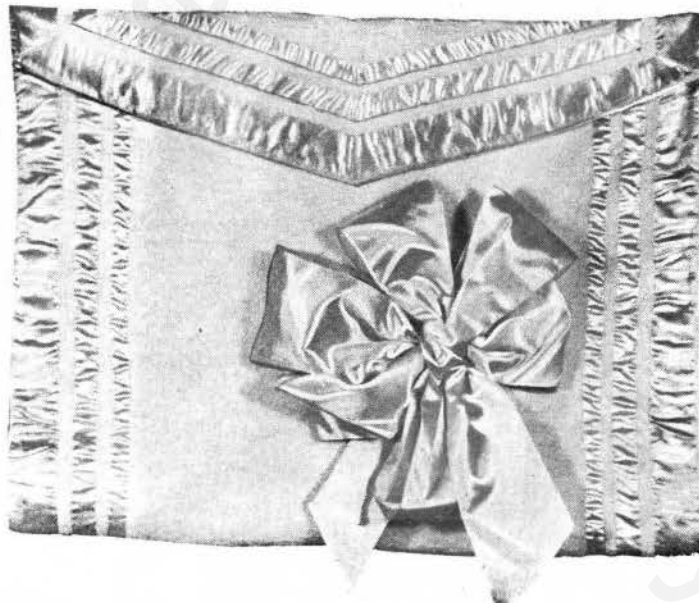
1/2 yard of 3/4-inch ribbon is required for each of the bows, and 3/4 yard for each of the 2 streamers on which a rattle and teething rings are fastened. Clamps are securely stitched on to both sides.



A fanciful arrangement of ribbon roses, loops and ends which may trim the clamps for the cover on baby's carriage.



This seven-looped bow with rose-bud center and streamers is suitable for a carriage rope or blanket.

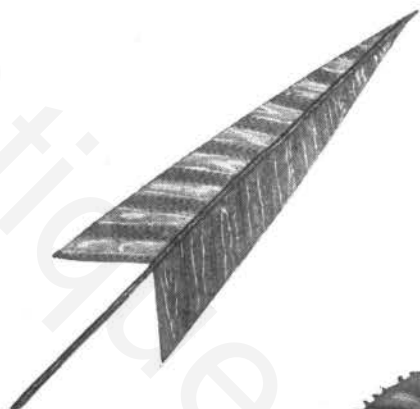


Cover, made of eiderdown, is 3/4 of a yard wide and 1 1/8 yards long, including the pointed lap-over of 9 inches:

3 1/4 yards of 2-inch satin ribbon is used for the band to outline edges and 3 yards each of 1-inch blue ribbon and 3/4-inch pink are used for the narrower bands.

3 yards makes the 6-looped bow with 9 inches allowed for each of the streamers.

RIBBON AND A TOUCH OF GLUE

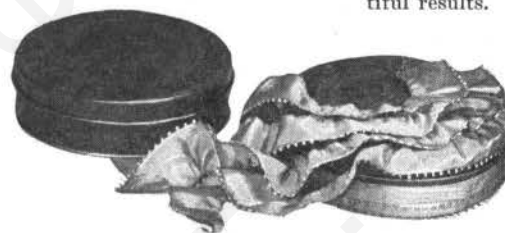


The ribbon quill above will give an air of chic to the tailored or sports hat it may adorn. On a buckram foundation, 8 inches long, $\frac{3}{8}$ -inch taffeta ribbon, orange with a black edge, is lepaged; beginning from the lower end and working up to the tip, each piece of ribbon is mitred in the center. A piece of milliners' wire is wound with ribbon and lepaged down the middle to finish the quill.

This gay parrot will lend color to any frock, hat or hanging which it adorns. It is made by cutting a piece of canvas in the desired shape and covering with ribbon which is lepaged piece by piece to the surface.



Shaded green moire is used for the tail and the tips of the feathers, while yellow ribbon separates the green from the bright blue and rose of the body. The neck is of blue ribbon and the beak of a piece of black ribbon and one of white. Many transfer patterns have beautiful designs which may be developed similarly very quickly with most beautiful results.



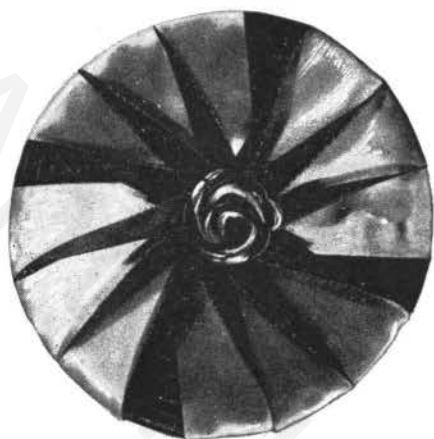
A tin candy box which has become scarred or scratched may be easily rejuvenated by giving it a new dress of ribbon, gathered by drawing the picot thread in one selvedge and lepaging in place. It is held on the foundation with a thin line of liquid glue, on which the ribbon is pressed with the fingers. Rosebuds of metallic ribbon finish center.



This stunning pair of wings, made from two shades of narrow grosgrain ribbon, will give an air of chic to any hat. The crinoline, cut the desired shape, is covered with pieces of $\frac{1}{2}$ -inch grosgrain ribbon. Begin at the tip and work upward. The upper part of the ornament is bound with plisse ribbon, lepaged in place. The button connecting the two wings is made on circular crinoline foundation. Spread the crinoline with glue; beginning at the center applique twisted ribbon. The edge is bound with plisse ribbon, lepaged in place.

In using glue on ribbon and silks allow time for it to become almost dry before applying to material, or before turning the edge over to form a hem, or before joining to another piece of material. If you are careful about this one point it will never come through and spot. Delicate materials require only a touch applied lightly in a thin line with a small spreader.

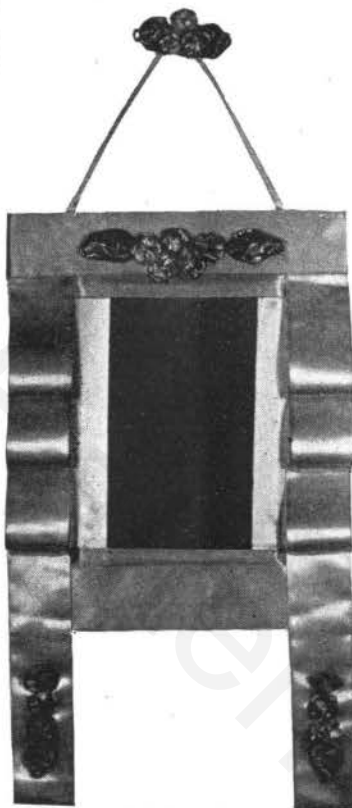
WITHOUT TAKING ONE STITCH



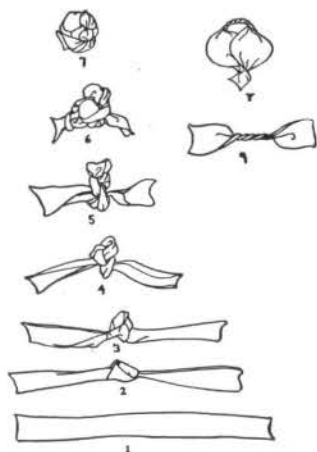
The above cocarde is developed in two-tone satin ribbon 1 inch wide mounted on a circle of buckram 5 inches in diameter. 12 pieces of ribbon 3½ inches long are cut. Two pieces of 1-inch metallic ribbon are laid on the buckram to form a cross; the ends are turned down over the rim of the buckram and firmly lepaged underneath. Three pieces of ribbon, selvages touching, are lepaged to the wrong side of the circle, drawn over the edge to the right side, the left edge of each turned back and drawn to a point.



Charming rosettes can easily be made from metallic ribbon by twisting it and pinching it into place as shown in the three lower figures. It is then fashioned into circles and lightly lepaged to a background of crinoline. Colors such as rose and old blue may be combined, as was done in the original of the illustration. This motif may be varied indefinitely for trimming lace and chiffon dresses, lampshades and novelties.



This graceful boudoir mirror is made by lepaging a small looking-glass to a piece of heavy corrugated cardboard large enough to leave a border several inches wide. Satin ribbon of a shade to harmonize with the hangings of the room is lepaged over the cardboard and formed into four loops at each side. Metallic ribbon rosebuds and leaves are the trimming.



To make rosebuds of metallic ribbon, tie five knots, one after the other as shown in figures 1 to 6. Then fashion into a small circle (figure 7) and fasten the ends with a bit of glue. The leaves are made by twisting a bit of ribbon as in figure 9. Then bend the two ends together and fasten with glue as in figure 8.



Tiny circles of picot ribbon gathered on their own picot thread and attached to a background of heavy crinoline form this effective ribbon plume for hat or gown. The stem is made from a piece of whalebone wrapped with ribbon and fixed firmly to the background.

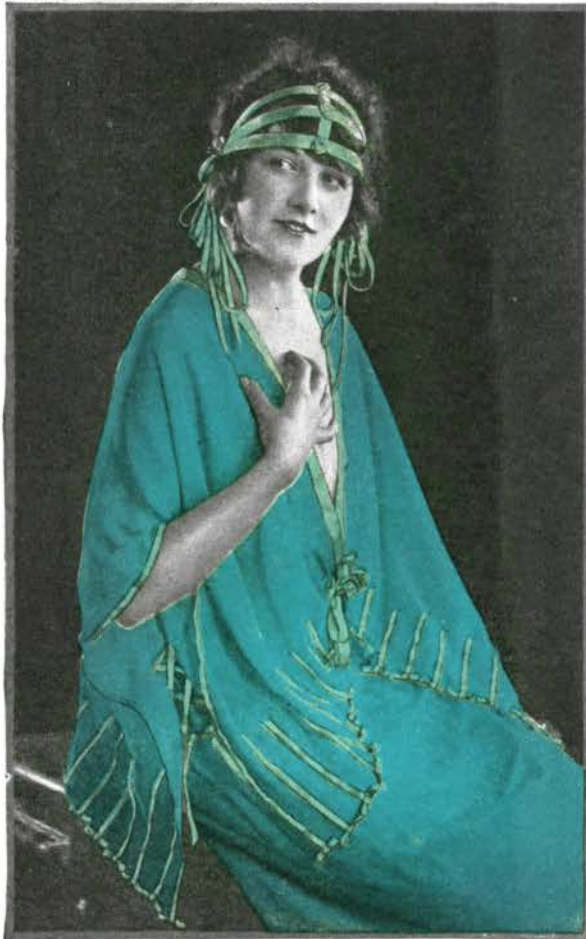
NEW AND GRACEFUL BOUDOIR NECESSITIES



An ordinary box padded at top and covered with two-tone basket-woven ribbon, and edged with two shirred frills is changed into a powder box with cushion top. The corners are decorated with wee twisted flowers in several lovely shades. $3\frac{1}{4}$ yards of $\frac{1}{2}$ -inch ribbon cover top and $2\frac{1}{2}$ yards 2-inch ribbon make frills. $1\frac{3}{4}$ yards $\frac{1}{2}$ -inch ribbon are enough for flowers and leaves.



For the charming negligee shown above 3 yards of crepe satin are required and 12 yards of $\frac{1}{2}$ -inch ribbon for trimming. The turban requires $2\frac{1}{8}$ yards of $7\frac{1}{2}$ -inch satin ribbon with $2\frac{3}{8}$ yards of $1\frac{1}{4}$ -inch velvet ribbon sewn 1 inch from edge. Looped bow at side.



A Georgette crepe breakfast jacket with ribbons. $1\frac{1}{2}$ yards of Georgette are needed for jacket and 13 yards $\frac{1}{4}$ -inch ribbon for border effect; $4\frac{1}{4}$ yards $\frac{1}{2}$ -inch and $\frac{1}{4}$ yard of $\frac{3}{4}$ -inch for rose in center of bow. The head-band uses $2\frac{1}{2}$ yards $\frac{1}{2}$ -inch ribbon cut into three pieces and fastened to center band with tiny swirled roses. 7 yards $\frac{1}{4}$ -inch ribbon make loops.



These three ribbon sachets bound with novelty edge ribbon, and the three tied together with a jaunty bow, with a wee flower at one corner. 10 inches of 3-inch ribbon for each sachet and 3 yards of $\frac{1}{4}$ -inch are needed for binding and bows.

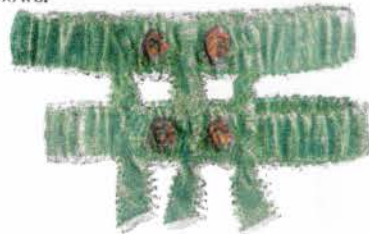
GAY GARTERS ARE THE VOGUE



These simple garters are made of $1\frac{1}{4}$ yards of $1\frac{1}{2}$ -inch grosgrain ribbon and 1 yard of 1-inch colored ribbon, sewed as in Diagram I. Decorate with large plaited wheel, another small one of contrasting color, and a tiny metal buckle. The cockades on the slippers above require: 1 yard of 1-inch grosgrain ribbon. Make $\frac{1}{4}$ -inch plaits, forming wheel of 3-inch diameter. 2 streamers $2\frac{1}{2}$ inches long trim each cockade. A metal buckle is placed in center.



Black satin ribbon edged with a metallic ribbon with three bows of the metallic ribbon is used in this garter. $\frac{5}{8}$ yard 1-inch ribbon for each garter, $1\frac{3}{8}$ yards of $\frac{3}{8}$ -inch for edging and bows.



The picot-edge ribbon garters above require $\frac{5}{8}$ yard of 1-inch ribbon for each garter; $1\frac{1}{2}$ yards of $\frac{1}{2}$ inch for knotted ends; 4 inches $\frac{1}{2}$ inch for each rose, and 3 inches $\frac{1}{4}$ inch for leaves.



The above garters require $1\frac{1}{4}$ yards of 2-inch figured ribbon for the foundation, $2\frac{2}{3}$ yards of $\frac{1}{2}$ -inch satin ribbon for the under side of garter; allowing $\frac{1}{4}$ inch on each side, sew as in Diagram II. Decorate with 3 buds.



These garters are made with 1 yard of $1\frac{1}{2}$ -inch 2-tone ribbon, and the same amount of 1-inch ribbon of contrasting color, sewed as in Diagram I. Decorate with 4 petals and bow.

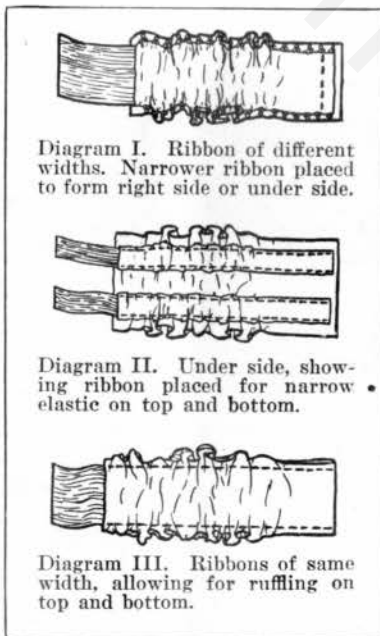


Diagram I. Ribbon of different widths. Narrower ribbon placed to form right side or under side.

Diagram II. Under side, showing ribbon placed for narrow elastic on top and bottom.

Diagram III. Ribbons of same width, allowing for ruffling on top and bottom.



Grosgrain ribbon with contrasting edges makes a unique garter. $\frac{5}{8}$ yard of $1\frac{1}{4}$ -inch ribbon is needed for each garter, and $1\frac{1}{4}$ yard $\frac{1}{2}$ -inch for trimming. For rose details, see page 26.



Metallic picot ribbon edged with $\frac{1}{4}$ -inch velvet ribbon and lace. $\frac{5}{8}$ yard 1-inch metallic picot ribbon is needed for each garter. $\frac{5}{8}$ yard $\frac{1}{4}$ -inch velvet ribbon for edging and $\frac{5}{8}$ yard for bow knot, and $\frac{3}{4}$ yard of lace.

For flower details, see pages 26 and 30.

PERSONAL LUXURIES, EASILY MADE

The camisole illustrated on the right is formed of 2-inch satin ribbon mounted on crepe de chine, georgette crepe, or washable satin. For medium size about 7 yards of 2-inch satin ribbon are required and 1 yard of 1-inch ribbon for the straps. Tiny ribbon buds decorate the top, and finish the small flat bows on the shoulders. Elastic is run through the hem at the bottom.



The camisole and bloomers illustrated below are very suitable for the slender silhouette now fashionable. For the latticed top 1/2-inch ribbon is used and 17 yards are required; (see page 30 for direction for making lattice) and 1 yard of 3-inch ribbon for foundation on which lattice is mounted.

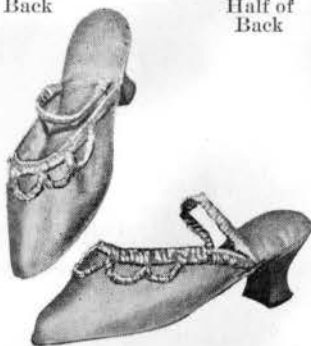
The ruffle on the bloomers is trimmed with 3/8-inch picot-edge ribbon and 3/4 yard is required for each rosette.



For the pair of slippers above, use: 2/3 yard of 4-inch ribbon for front, and the cut away pieces for back, 2 yards 2-inch ribbon rolled to trim tops and 2/3 yard sewed together lengthwise for elastic. Decorate with buds.



Half of Back Front Other Half of Back



The mules shown above require 3/4 yard of 4-inch ribbon. 1 yard of 1/2-inch ribbon for straps which are formed of elastic covered with ribbon; (see page 11, diagram 1, for working direction for covering elastic with ribbon) and 4 yards for shirred trimming.



The brassiere illustrated above is essentially practical and one can easily afford several if one makes them at home of ribbon. The yardage depends on the bust measure. For the shoulder straps and the binding on the top and bottom edges 1-inch satin ribbon is used.

LINGERIE MAKES DAINTY USE OF RIBBON

The camisole below, left, is trimmed with $\frac{1}{4}$ -inch picot-edge ribbon with double shoulder straps, and a looped bow, requiring $1\frac{1}{2}$ yards of ribbon.

Step-ins to match camisole require $1\frac{1}{2}$ yards of ribbon for each bow and the same amount for binding each leg.

The dainty camisole illustrated on the left requires $6\frac{1}{2}$ yards of 1-inch ribbon, forming three bands across the front stitched together with fagotting. The front bands are latticed (see page 30 for directions for lattice work). For the shoulder straps, 1 yard of 1-inch ribbon is used and $1\frac{1}{2}$ yards of 1-inch lace for the top. The lower part may be of wide ribbon, crepe de chine, or wash satin. Elastic is run through the hem at lower edge.

Grace and charm distinguish the lines of the negligee on the right of georgette crepe which may be worn over a night-robe or simple slip of crepe de chine. It is made of 2 lengths of georgette crepe and trimmed with 1-inch satin ribbon. The dainty wreaths are formed of small roses and leaves in pastel colors (for making roses and leaves see directions on pages 29 and 30), 25 yards of 1-inch ribbon are required.

The boudoir band is made of ribbon and lace combined. It is 14 inches long by 6 inches wide and is made on a net foundation. The band is tied in back with streamers. $3\frac{1}{2}$ yards of 1-inch ribbon are required for the three rows, rosettes and streamers. 2 yards of 1-inch lace are shirred and sewn to the edge of the band all around.



RIBBON SHADES GLOW WITH BEAUTY



Decorative candle shields may be made at home of ribbon, with metallic ribbon ruffle at edge and a flat bow motif at center. The wire foundation is wound with narrow ribbon and the covering and trimming glued to frame. $\frac{1}{8}$ yard of 5-inch ribbon is needed for each shield, and $1\frac{1}{8}$ yards of $\frac{1}{2}$ -inch metallic ribbon for ruffles and bow.



A colorful lantern is made of two lengths of ribbon joined together and gathered into double ribbon wheel and tassel at center bottom. The top has a metallic ribbon box pleated ruffle. Twisted ribbon with beaded streamers make handle. $\frac{5}{8}$ yard of 9-inch figured ribbon for lantern, and 4 yards of $\frac{1}{2}$ -inch metallic for top and wheel.



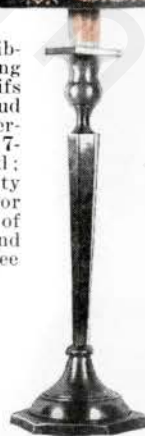
The wire frame of this hanging shade is covered at sides with pleated ribbon glued to the ribbon-wound frame. The bottom is likewise covered, with fullness held in under a flat rose at center. Novelty ribbon covers edges and makes looped hangers. $1\frac{3}{4}$ yards of 10-inch ribbon are pleated to cover frame. $8\frac{1}{2}$ yards of $\frac{3}{8}$ -inch novelty ribbon are needed for trimming, and $1\frac{1}{4}$ yards of 3-inch ribbon for rose.



For the reading lamp the alternating panels of the plain and flowered ribbons are slightly pleated and glued to a scalloped wire frame. Narrow ribbon run through glass beads edges the top and bottom. Beaded ribbon makes the pulls. $3\frac{3}{8}$ yards of $8\frac{1}{2}$ -inch flowered ribbon and $3\frac{3}{8}$ yards of $3\frac{1}{4}$ -inch plain ribbon are needed for panels and top. 6 yards of $\frac{1}{4}$ -inch rose or gold ribbon border edge.



On this shield of ribbon the overlapping diamond shaped motifs have a tiny rosebud with leaves at intersection. $\frac{3}{8}$ yard of 7-inch ribbon for shield; $1\frac{3}{8}$ yards of novelty metallic ribbon for edging and $\frac{1}{8}$ yard of $\frac{1}{2}$ -inch for flower and $\frac{1}{8}$ for leaves. See page 9 for flowers.



The shade on the right is made of 16 inches of 5-inch ribbon covered with Georgette crepe, and $3\frac{3}{4}$ yards of $\frac{1}{2}$ -inch metallic ribbon for pleating at top and bottom and the zig-zag trimmings.

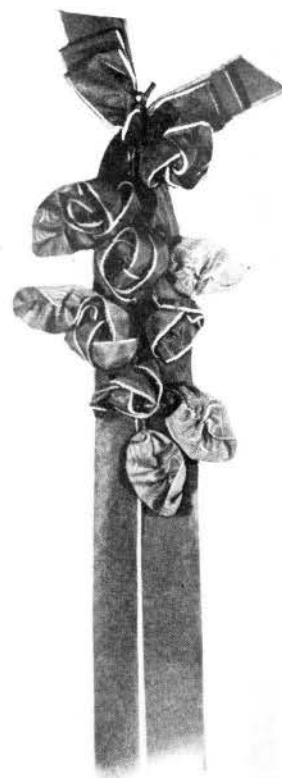
WHEN RIBBON BLOSSOMS INTO FLOWER



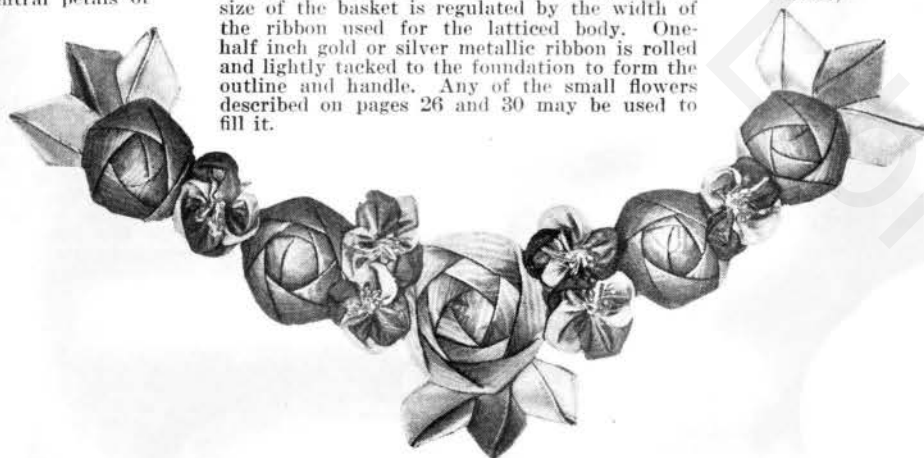
The corsage above is of rose satin ribbon, combined with rose ombre metallic plissé and green metallic plissé for leaves. Seven inches are required for each leaf (see page 30 for directions for leaf). On a circle of crinoline are mounted 2 rows of petals (see page 30 for petals) requiring $2\frac{1}{4}$ yards of 6-inch ribbon and $1\frac{1}{4}$ yards of $1\frac{1}{8}$ -inch rose ombre ribbon for central petals of flower.



The basket of ribbon posies above is used to decorate the end of a wide black satin ribbon sash. However, this design may be used with the happiest results as scattered motifs on dainty evening frocks of chiffon or lace. The size of the basket is regulated by the width of the ribbon used for the latticed body. One-half inch gold or silver metallic ribbon is rolled and lightly tacked to the foundation to form the outline and handle. Any of the small flowers described on pages 26 and 30 may be used to fill it.

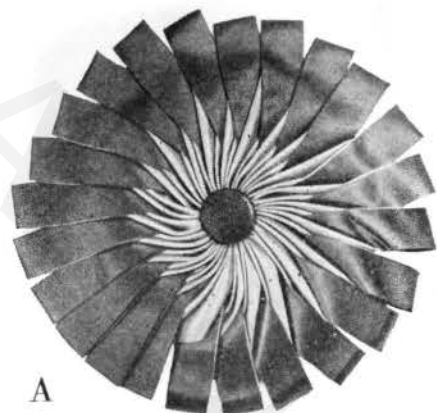


The corsage above is of $1\frac{1}{2}$ -inch blue grosgrain ribbon with a heavily corded edge of white. One edge of the ribbon is gathered and softly swirled around a small foundation ball filled with cotton to which it is tacked lightly. (See page 30 for leaves.)



The garland illustrated is made of 1-inch ombre (shaded) moire ribbon for the flowers and $\frac{3}{4}$ -inch satin and metallic ribbon for the folded points which give the effect of leaves. Directions for making flowers will be found on pages 26 and 30.

A COCARDE AND ITS VARIATIONS



A

A—Make center of above cocarde exactly like Fig. B, then between each pointed petal place a loop of contrasting ribbon. Very striking color combinations can be achieved in this cocarde suitable for frock or hat.



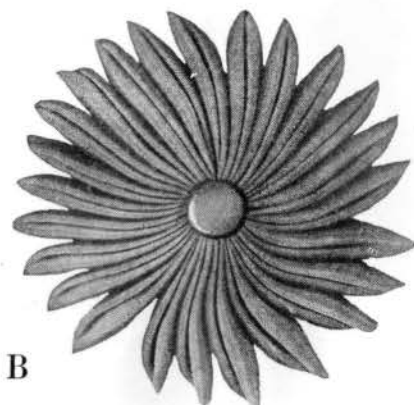
C

The steps used in making the cocardes on this page are the foundation of nearly all cocardes. Those shown on pages 5 and 33 are variations of the details described for Fig. B on the right.

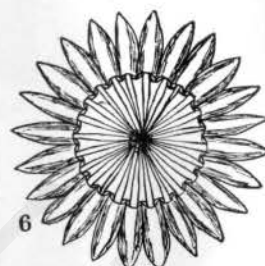
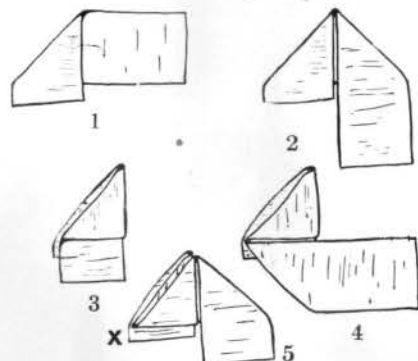
D—Process of making this dainty trimming is exactly the same as that employed in the first five steps of Fig. B. Cocarde is turned face backward, as indicated in Fig. 6; the inner and outer points are laid one over the other and tacked together, forming one center circle through which a piece of ribbon is drawn and knotted as illustrated.



D



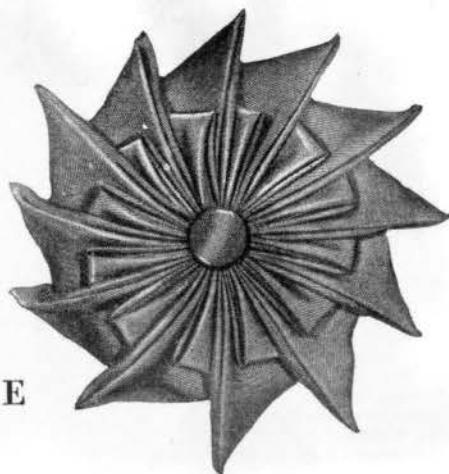
B



6

B—The rosette above is as easy to make as it is charming when completed. Take ribbon $1\frac{1}{2}$ inches wide or wider, preferably grosgrain, and after making bias folds as indicated in Figs. 1 and 2, place the right-hand bias immediately over the left-hand bias as indicated in Fig. 3. This gives the first petal of the cocarde. Fold the remaining portion of the ribbon at right angles as indicated in Fig. 4 to form another bias and lay the third bias over the second. Then repeat the first step as indicated in Fig. 5, again laying the right-hand bias over the left-hand bias, which gives two petals. When these two petals are done, start tacking at the inner points where the petals meet, indicated by letter X in Fig. 5, and begin the third petal as indicated in Fig. 4, repeating until 24 petals are done. Finish center, where points are connected, with self-covered button. Of $1\frac{1}{2}$ -inch ribbon, 2 yards are required for a 24-petal cocarde. Of 2-inch ribbon, 4 inches are required for each petal.

E—Is exactly the same as B, excepting that every other petal-point is folded in toward the center and tacked.



E

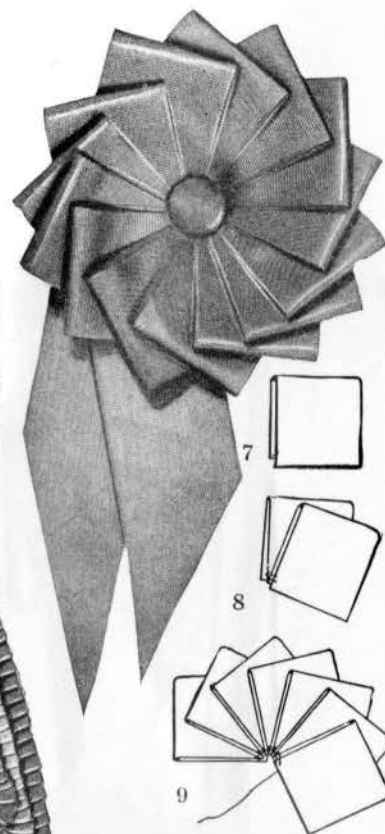
C—Details for making this effective cocarde are the same as illustrated for B. Turn finished cocarde so that the back becomes the front as indicated in Fig. 6. Tack the outer points into a small circle. Draw a ribbon through these two circles, and place a knot over the upper one, as indicated in illustration.

PARIS SENDS THESE BOWS AND COCARDES

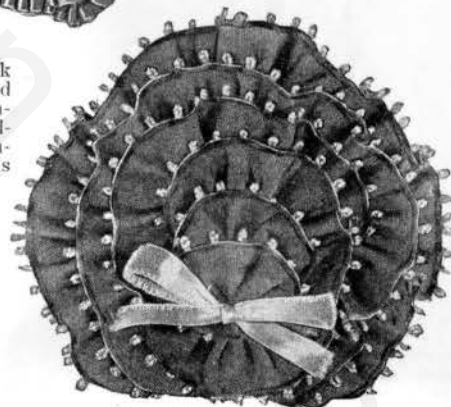
In the bow with knotted loops there are 12 loops of 4 or 5 inch ribbon with a knot in the center of each loop. Each loop should be of equal length. As indicated in Fig. 1, a small tuck is made across the ribbon, at intervals of 6 to 10 inches. A knot is made between the first and second tuck, as in Fig. 2. When, as in Fig. 3, 13 of these tucks are made, a wire is run through them and the ends of the wire joined and bent into a hook. Two ends finish the rosette-bow.



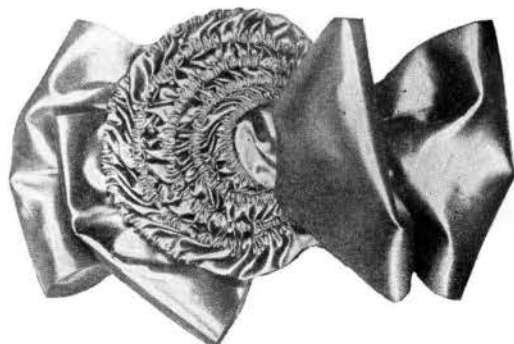
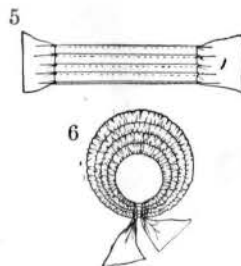
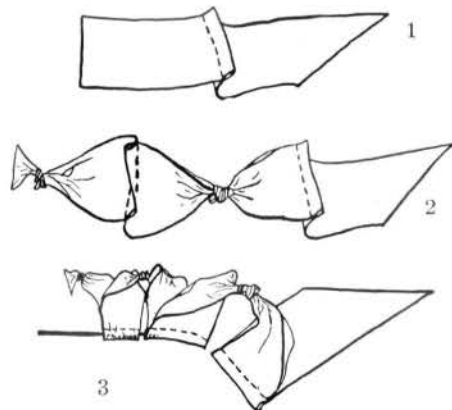
Take a length twice the width of the ribbon and fold over as indicated in Fig. 7, each loop being a perfect square. After 14 have been made, Fig. 8, draw a needle through the lower left-hand corner of all the squares. Tack securely. Then push each looped petal out, spacing evenly, Fig. 9.



For the cocarde above 9 yards of $\frac{3}{8}$ -inch grosgrain ribbon are required. The rows of alternating light and dark ribbon are side pleated and stitched to the buckram foundation, the outer one extending beyond edge of foundation. The center row is stitched through middle.



The shoe cocarde above, made on a buckram foundation, has six rows of picot-edge grosgrain ribbon shirred on one edge and centered with a silver or gold ribbon bow. $1\frac{1}{2}$ yards of $\frac{3}{4}$ -inch ribbon are needed.



24 inches of 6-inch ribbon is used to make the shirred loop buckle. Five $\frac{1}{4}$ -inch tucks are evenly spaced on the ribbon, as in Fig. 5, and a milliner's wire drawn through each tuck, as in Fig. 5. After the ribbon has been evenly shirred, all the five rows of wire are connected and gathered together, as in Fig. 6. Four loops of ribbon are laid, bow fashion, and a knot tied in the center, the two upper loops being drawn through the center of the buckle.

ACCESSORIES TO SMARTNESS



The case which may hold Milady's dainty handkerchiefs or head-bands is made in lattice work of $\frac{1}{2}$ -inch ribbon. 17 yards of ribbon is used for the case 10 by 5 inches, and $\frac{3}{4}$ of a yard for the bow. 30 inches of 5-inch ribbon is used for the lining. Buds and streamers decorate the front.

This ribbon girdle is made of cartridge pleated novelty ribbon, with front motif of scalloped shaded ribbon shirred into flowers and a basket woven center. Requires $\frac{1}{2}$ yard of 8-inch satin ribbon to line foundation of ornament, $2\frac{1}{2}$ yards $\frac{3}{4}$ -inch ribbon for lattice center, and girdle, and 4 yards scalloped ribbon for flowers.

$5\frac{3}{4}$ yards velvet ribbon for leaves, streamers and flowers.

This girdle is cartridge pleated and centered with a crisp fresh two-tone ribbon rose that shows both of its lovely colors in its petals. The rose is made by folding the ribbon diagonally from side to side as shown on page 30, thus forming the petal effect. This girdle requires 7 yards of 1-inch ribbon.



A wide satin ribbon is chosen for the sash girdle at the left corner, and to further enhance it, blossoms are placed at the center front. The sash requires $3\frac{1}{4}$ yards $6\frac{1}{2}$ -inch ribbon. The flowers need 10 yards $\frac{1}{2}$ -inch ribbon. For flower suggestions, see pages 24, 25 and 30.



This bouffant bow is only one of the many ways that a silken ribbon may be arranged, but it is a very effective one and comparatively easy. $5\frac{1}{2}$ yards of 9-inch ribbon is required to make this bow and girdle.

This bag is made of $\frac{3}{4}$ yard of 9-inch metallic brocaded ribbon with novelty edges shirred at sides, 3 yards $\frac{3}{8}$ -inch grosgrain ribbon for the shirring at center of bag and handle. $1\frac{3}{4}$ yards 9-inch plain taffeta for the lining.

“BEAUTY’S BROW IS RIBBON WREATHED”



The front of ornament is made of ribbon petals with a center of $\frac{1}{4}$ -inch silver ribbon swirled. 5 yards of two-toned ribbon are required; $\frac{3}{4}$ yard $\frac{1}{4}$ -inch metallic ribbon knotted in center; and 1 yard $5\frac{1}{2}$ -inch satin ribbon, pastel shade, to cover front and back of buckram foundation. See Petal, page 30.



Folded silver ribbon makes this classic laurel wreath with side rosettes of loops. $2\frac{1}{2}$ yards of $\frac{3}{4}$ -inch ribbon are needed. The folded loops are sewn on a ribbon band.

A shirred ribbon head-band requires 27 inches of 2-inch ribbon and 4 inches of $\frac{1}{2}$ -inch scalloped ribbon for each flower.



Bits of brilliant coloring adeptly placed against dark backgrounds are considered a necessary touch on the smart Parisienne's costume. $1\frac{1}{2}$ yards 3-inch gros-grain ribbon is needed for this lovely poppy. The petals varying in size are cut as indicated on page 24, rolled at sides, gathered top and bottom and placed around a silk pompon. Contrast is gained by a spray of delicate foliage.

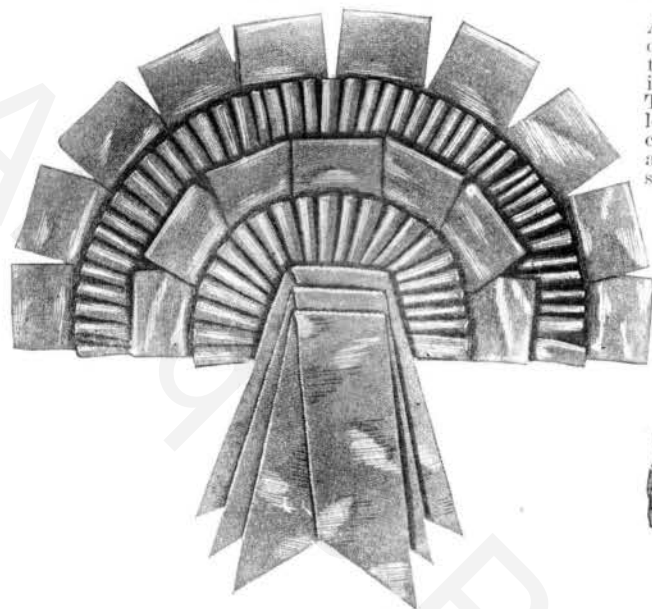


Twenty-seven inches of 2-inch gold ribbon makes this bandeau requiring 2 yards of $\frac{3}{8}$ -inch metallic ombre ribbon for flowers, and 5 inches of $\frac{1}{2}$ -inch metallic ribbon for each leaf.

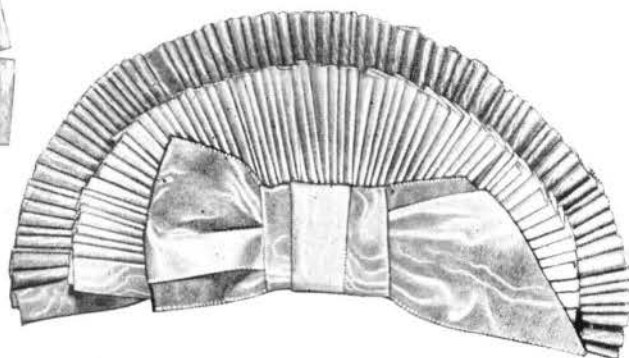


For bobbed locks there is this lovely band of rose and silver. $2\frac{1}{2}$ yards of $\frac{3}{8}$ -inch silver ribbon are required for leaves and $2\frac{1}{2}$ yards of 1-inch rose ombre for flowers.

COCARDES THAT ARE NEW AND SMART



A cocarde that is original and smart is the one on the left, made on a fan-shaped buckram foundation. The entire cocarde is made of alternating rows of ribbon loops and side-pleated ribbon. Three pieces of ribbon, each differing 1 inch in length, are folded one over the other and placed at center for a finish. $4\frac{1}{2}$ yards of $1\frac{1}{4}$ -inch ribbon are needed for the entire cocarde. $\frac{1}{4}$ yard 5-inch satin ribbon is needed to cover the foundation.



The coquettish fan ornament makes an equally charming finish for the modish cloche or the wide hat brim of plush or velvet. The buckram foundation is a semi-circle, measuring 6 inches across. One yard of 3-inch ribbon is pleated on to the outer edge of the foundation and $\frac{3}{4}$ yard of 2-inch ribbon makes the inner semi-circle. $\frac{1}{2}$ yard is needed for the bow that finishes the center.



Fig. 2

These quaint flowers made of the new scalloped ombre (shaded) ribbons seem almost to gather themselves into such bewitching blossoms, Fig. 3. The center is a narrow piece of ribbon joined at the ends and gathered at the bottom, with scant gathers at the top to form the tiny nest for the stamens, Fig. 2. 1 yard of $\frac{1}{2}$ -inch scalloped ribbon required for each flower.

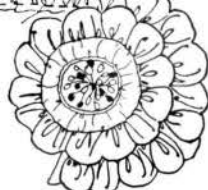


Fig. 3



The wheel cocarde, left, is sponsored by the exclusive woman everywhere. One may make it easily at home, confident that it has all the loveliness of those in the best shops. $4\frac{1}{2}$ yards of 1-inch ribbon are folded into 9-inch lengths as in Fig. 1, then folded again as in Fig. 2. The pieces are then arranged in wheel fashion on a buckram foundation.

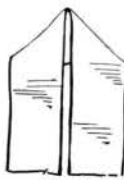
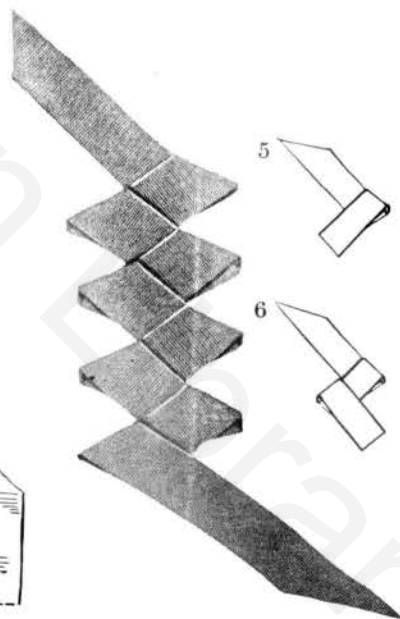


Fig. 1



Fig. 2

This is a very effective trimming for a dress or hat. Fold a piece of ribbon as indicated in Fig. 5, and tack. Then reverse the loop as indicated in Fig. 6, tack again, forming a double diamond shape. The process is repeated as many times as required for the length of trimming needed. Several widths of ribbon are suitable, but the $\frac{1}{2}$ -inch width in grosgrain is preferable.

CLEVER AND COLORFUL TRIMMINGS

C—A very smart yet simple trimming is made by gathering 3 inches of $\frac{3}{8}$ -inch ribbon to form a circle $\frac{3}{8}$ inch in diameter as indicated in Fig. 6 to the left. A ribbon is drawn through the rings over the seams as in Fig. 7. In tacking this ribbon on to the material which it will trim, steel beads may be used along the outer edges.

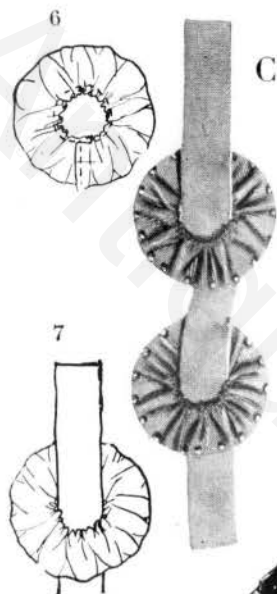


Fig. 1

Naïve petals hold their secret well in this flower cocarde, but even secrets may be told when they hold so much loveliness that might be shared. The petals of two-tone ribbon turn just a bit of the inner edge out as in Fig. 1 and the edges of the inner color brought together, overlapped and gathered and arranged in four rows on a foundation, beginning at outer edge. The tiny bud at the center is a bit of twisted ribbon, see page 28. 4 yards of 1-inch two-tone ribbon are required for this effective cocarde.

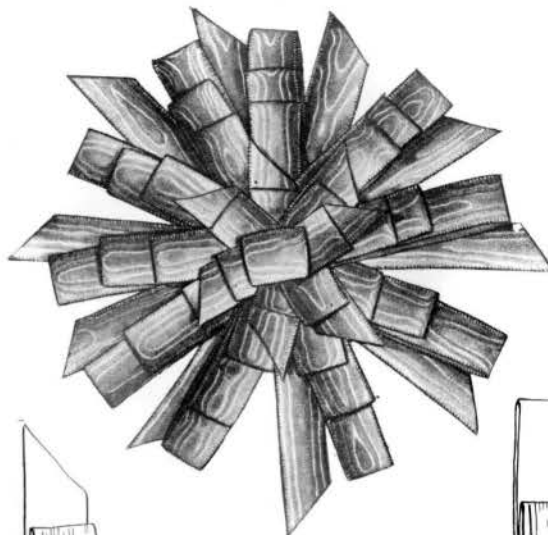
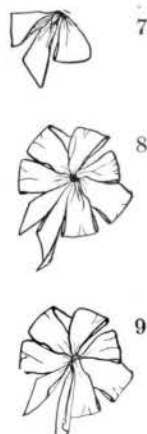


Fig. 3

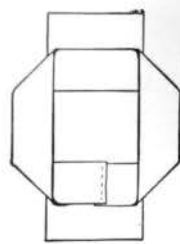
Ombre shaded ribbon lends itself especially to this many sided cocarde made of ten 3-inch strips of ribbon, alternating with loops made as in Fig. 4. The center of the motif is made with several single short loops and pointed ends, Fig. 3.



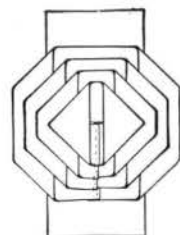
Fig. 4



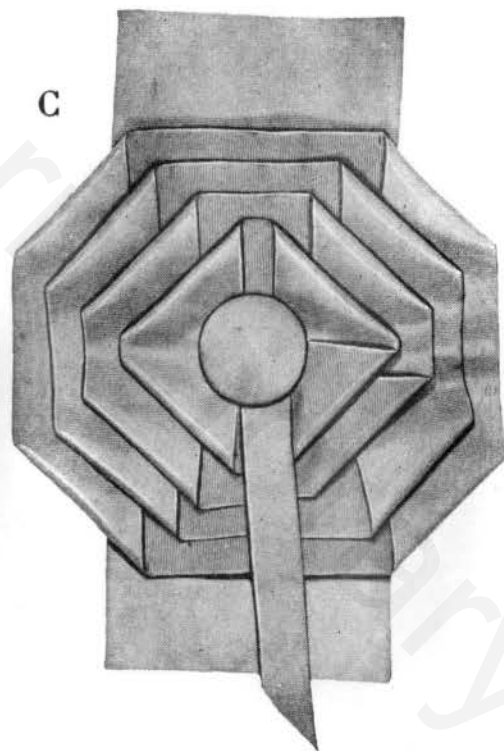
One end and a loop, as in Fig. 7, are wound with several strands of thread to hold them securely. Five additional loops are each fastened in the same manner, as in Fig. 8. The remaining end of ribbon is drawn between loops three and four, and is knotted on the reverse side, as in Fig. 9, the remaining end being cut the same length as the first end. Both ends are cut on the bias.



5



6



C—A wide piece of ribbon is used for a foundation. 1-inch ribbon is laid in the form of a square with the corners biased as indicated in Fig. 5. The inner rows are laid over as indicated in Fig. 6, each row a separate piece of ribbon. Cover stitches with button and two ends, as illustrated.

NEW HATS AND THE TRIMMINGS THEY FANCY

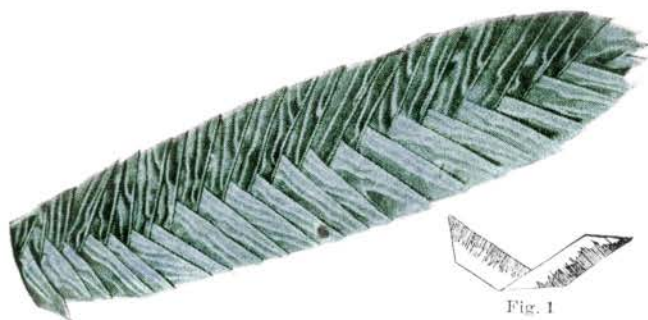


Fig. 1

This ribbon quill of moire ribbon is made by cutting graduated pieces of ribbon folded as in Fig. 1 and placed one upon the other on a quill-shaped piece of buckram wired at edges and through center. 3 yards $\frac{3}{4}$ -inch shaded ombre ribbon are needed and 11 inches of 3-inch satin ribbon for lining.



Colorful satin ribbon with corded edge, faced with a metallic ribbon, is caught 1 inch below edge of brim, turned diagonally over to show the metal color and caught on under side of brim. The crown is made entirely of alternating rows of ribbon radiating from the center. The hat is made over buckram shape and requires 8 yards each of $1\frac{1}{4}$ -inch ribbons.



The collapsible mousquetaire ribbon hat above is of heavy satin back moire ribbon 8 inches wide. The brim requires 38 inches with dart at middle front. For the crown 25 inches are required. The 9 darts measure 3 inches at selvedge, Fig. 1 (A-B), $4\frac{1}{2}$ inches, selvedge to point (C). Darts brought together inside crown, Fig. 2. Brim 38 inches of ribbon with darts in middle front wired, 2 inches turned under wired band, Fig. 3. Pleats on sides give necessary flare. Lines (D-E) and (F-G), Fig. 4, show where ribbon is folded one end over other and finished with cocarde.

See page 23 for working diagram.

The girdle, bag and hat cocarde on figure above are of novelty edged grosgrain ribbon. The ribbon is simply gathered along one edge and folded in a zig-zag way to give the pleated effect.

FOR THE COSTUME FASHIONABLE



The wheel-fancy at left, with long wide streamers, makes a charming finish for a simple one-piece or draped frock. 5 yards of 2-inch ribbon are required for the wheel.

Pieces of ribbon unevenly folded and sewn to foundation make this girdle with many streamers. For flower at center, see pages 28 and 29. The motif requires 4 yards of 1/2-inch ribbon.



Six loops of ribbon with turned back corners and pointed streamers.

The vestee with Peter Pan collar is made entirely of ribbon. 1 1/4 yards of 9-inch fancy ribbon makes the vest, and 1 1/2 yards of 8-inch plain ribbon is used for Peter Pan collar. The opening at the neck is trimmed with blanket stitches of baby ribbon.



The wide crushed girdle below is given a front motif made of ribbon wrapped wire and a ribbon flower. The bow is made of loops with one looped streamer and pointed end.

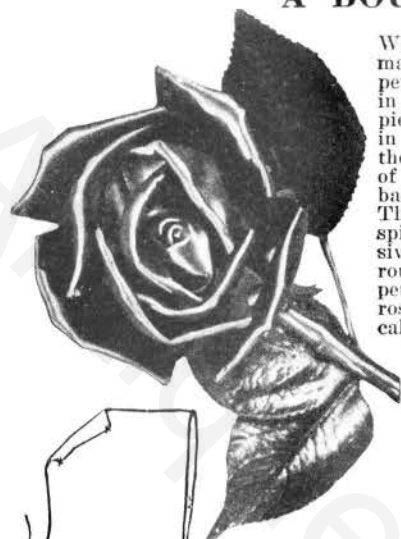


The cocarde shown on right is made of 1 yard of 1 1/2-inch belting ribbon with 1/4-inch bias tucks. For details of bias tuckings, see page 28. When series of 1/2-inch tucks have been made ribbon is swirled round and round to make flower effect.

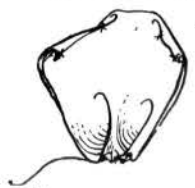
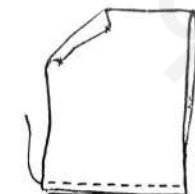
This fetching hat requires 15 yards of 3/4-inch two-tone ribbon. Cut into lengths measuring the height of crown and width of brim of frame to be covered. The pieces are folded through center on bias, as in Fig. 1 on page 22, and the center of the fold placed on edge of brim with one piece placed over the other until brim and side of crown are covered. The top of the crown is covered by similarly folded pieces with half light ends and half dark ends showing and arranged as in quill on page 22.



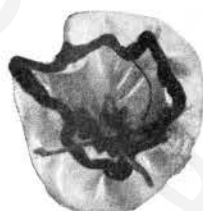
A BOUQUET OF RIBBON FLOWERS



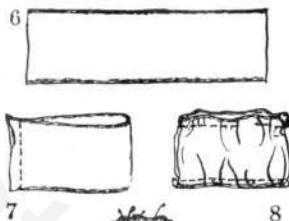
When one has learned to make this simple rose petal, roses may be made in an endless variety. A piece of ribbon is folded in half and gathered at the bottom. The corner of each loop is turned back as in Figs. 3 and 4. The first petal is rolled spirally and each successive petal partially surrounds the preceding petal, until a bud or full rose is formed. Stem and calyx are added. The size of rose desired can always be regulated by the width of the ribbon used. Ribbon 2 inches wide makes one the actual size of an American Beauty Rose.



3
These are back views of petal.



Poppy Bud



A piece of ribbon, as in Fig. 6, either with a black edge woven in the ribbon, or a narrow black ribbon edge attached, is folded and seamed as in Fig. 7. This loop of ribbon is turned inside out, to hide the seam. It is then gathered top and bottom as in Fig. 8 and the lower gather pulled in tightly around a stem to which the stamens have been attached. A dozen of these flowers makes an effective corsage.



Fig. 11

These delicately colored wistaria petals lend an interesting touch to pillows, negligees or lampshades. They may be used singly or together for girdles, hatbands, or merely as decorative motifs. 3 inches of 1-inch satin edged taffeta ribbon are needed for each petal. The ribbon is gathered as in Fig. 11, drawn up and wired as in Fig. 12. The stem is wrapped with floss.

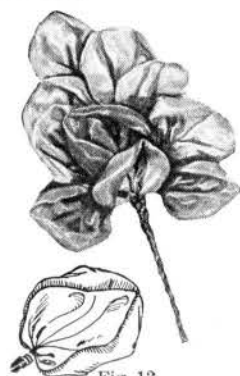


Fig. 12



Petals of varying size, cut as in Fig. 3, rolled at side and gathered top and bottom as in Figs. 4 and 5, are placed around a full group of stamens. Connect the base of the petals to a stem, and cover the connection with a calyx. This flower is easy to make, and the results most gratifying.

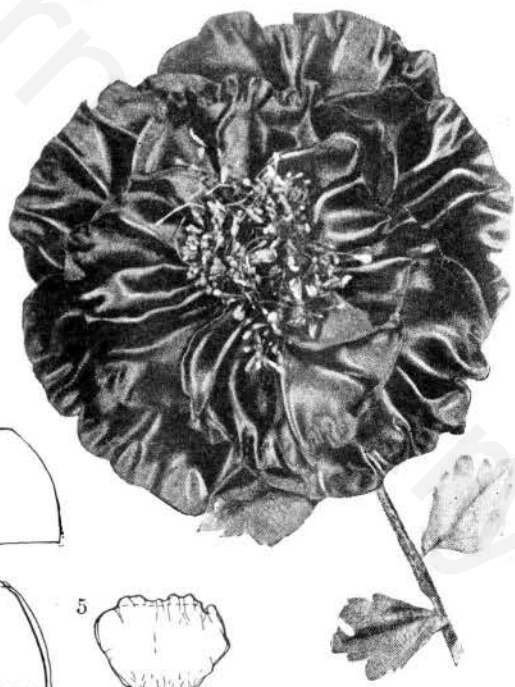
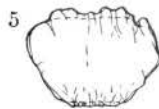
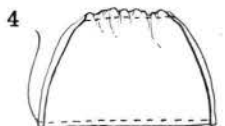


Fig. 2



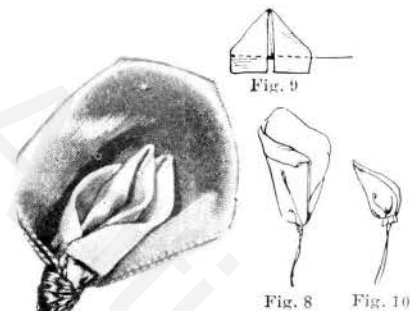
Fig. 3

A youthful hat or gown may go gayly forth adorned with these dainty berry-like flowers. 4 inches of 1½-inch ribbon are required for each flower. These are cut and seamed as in Fig. 2, and turned inside out so that raw edges do not show; stamens inserted and the ribbon gathered at top as in Fig. 3. The flower is then stuffed with bits of cotton gathered at the bottom and shaped to resemble a berry. Leaf detail on page 30.

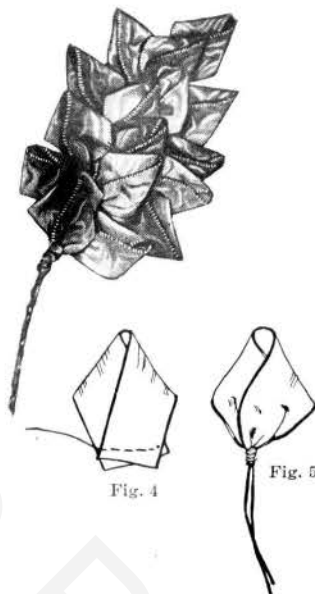


Full Blown Poppy

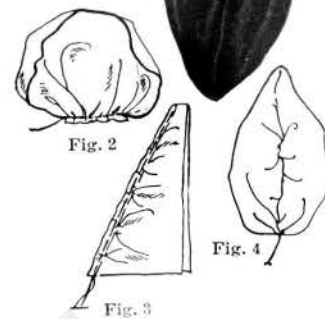
FROM PETAL TO FULL BLOOM



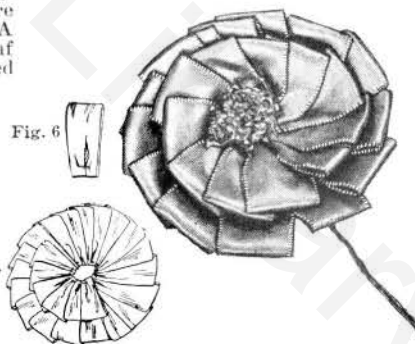
Corsages of exquisitely colored sweet peas are both graceful and modish. 3 inches of 1½-inch ribbon makes the outer petal and 3 inches of ¾-inch ribbon the centers of these blossoms. Ribbon for petal is folded in half, corners folded under and held with stitches, as in Fig. 8, bottom shirred and drawn up tightly. The centers are folded, as in Fig. 9, shirred at bottom, folded in half and gathered, as in Fig. 10. Green floss covered wire makes stem.



Simplicity is the password one must use to be admitted to fashion's realms and this flower motif on chapeaux or frocks will readily gain one an entree. 2½ inches of ½-inch ombre ribbon makes each petal. The ribbon is folded as in Fig. 4, gathered at the bottom and wired as in Fig. 5. The stem is wrapped with green floss.



To make the flower on the right the petals are made separately. For each petal cut a piece of ribbon twice the length of the width; run a thread along three sides and draw together as in Fig. 2. When the 5 petals are made they are sewn together under a center of jet beads. The velvet leaves are made as shown in Figs. 3 and 4. A thin wire run up the seam of each leaf is prolonged to form the stem, covered with narrow velvet ribbon.



For the small hat, this quaint posy is well liked. It is made by using ¾-inch scalloped ombre ribbon, applied on to a stamped design, thus giving a flat, yet soft, flower. The leaves are made by folding 6 inches of green metallic ribbon into squares and sewing into place on material. One may work out many other designs in this way, either originating the pattern or transferring it.

This many petaled flower requires 3 inches of ⅝-inch ribbon for each inner petal and 4 inches for outer. The petals are made as in Fig. 6. The 14 outer petals, sewed in a circle right to left, form a foundation for the 11 inner petals, which are lapped from left to right, as in Fig. 7, under each other around stamens. The stem is wrapped with floss and finished with calyx.

DETAILS AND DIAGRAMS OF ARTICLES SHOWN ON OTHER PAGES

Bag on Page 31

An original handbag developed in 1/2-inch red moire combined with black novelty ribbon patterned in red, gold and green. It is 7 inches wide and 5 1/4 inches deep. On a foundation of silk the ribbon is applied in lines as illustrated, leaving enough to extend beyond the foundation to form a fringe at the lower edge. Bones are run through a casing at the top. The lining is of 7-inch red taffeta ribbon.

Flat Purse on Page 31

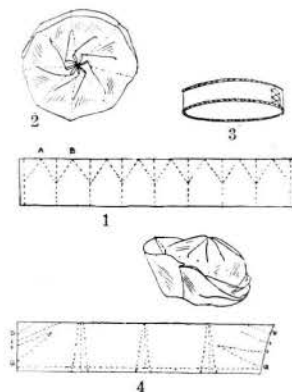
It is developed in navy and red plisse ribbon latticed. It requires 8 1/2 yards of 3/4-inch ribbon and 1 yard of 7-inch ribbon for lining and pocket.

Directions for Making Flat Purse

Take 2 pieces of canvas 16 inches long and slightly less than 7 inches wide; join with rows of stitching for firmness. Lay canvas on ribbon for outside of purse and turn over 1/2-inch on canvas at each end. Cut a piece of crinoline same size as canvas and cover with lining ribbon. If pockets are desired they should be stitched to lining at this stage. Pin outside and lining together and either stitch both together on the very edge or overcast with fine stitches. Turn up 5 inches, and on each end insert wedges. These, when finished, should be 5 inches deep and 3 inches wide at top and are made of the outside and lining ribbons.

The outside and lining pieces for the wedges are basted together with all edges turned in, then a wedge is inserted on each side and overcast with very fine stitches to the body of the purse. One large snap fastener may be used to fasten the flap to the purse; or two snap fasteners may be preferred, one a little bit in from each corner.

Working Diagram of Hat Shown on Page 22



Rosebud



When making the bud, the ribbon may be used in one of two ways: either by folding double and making the fold the upstanding edge, or using a ribbon with a heavy edge or selvedge. Whichever is used, the details are the same. The ribbon is first twisted spirally as in Figs. 5 and 6 and continues to wind spirally. When a bud or rose of the size desired is obtained, the ribbon is pulled down toward the stem, as in Fig. 7 and tied with thread.



Inside Front Cover

This ornament for the side of a small brimmed hat is 5-inch 2-tone satin faced grosgrain. The perpendicular section, 12 inches from point to point, is stiffened by 2 rows of ribbon wire. On the right edge the ribbon is turned over one inch to show the grosgrain back. For the center a piece of ribbon 8 inches long has the left edge turned over 2 inches which makes a strip 3 inches wide. This strip is rolled or telescoped loosely so that 4 edges are visible. It is tacked to the middle of the perpendicular section. Through the open center of this roll is run a piece of wire 9 inches long, wound with ribbon, the bias cut forming a point.

Inside Back Cover

The basket is latticed as described on page 30. The small flowers and leaves may be made as described on pages 26, 28 and 30.

Corsage of 1 1/8-inch orange ombre metallic ribbon. Each flower has four petals and silver stamens. Each petal requires 4 inches of ribbon; the ends are rolled over on the right side and tacked. Use 3/4-inch green metallic plisse for leaves.

Wheel with irregular outline 4 inches in diameter. Two rows of 1/2-inch picot ribbon are tacked in shallow pleats on the crinoline. Leaves of 1/2-inch silver metallic ribbon form

"spokes" and rosebuds of 1/2-inch ribbon the center. Cut away crinoline not covered by ribbon.

Ombre moire ribbon, 3/4-inch, is pleated and tacked on crinoline which has been marked with 3 interlaced ovals. Roses in pastel shades of 1/2-inch satin ribbon and leaves of 1/2-inch silver metallic ribbon. Cut away crinoline not covered by ribbon.

Shoulder corsage of petals of 1-inch black satin ribbon around iridescent stamens. Petals are made like leaves described on page 30. White satin baby ribbon is couched on the edge of each petal. 1 1/4-inch green metallic plisse for leaves. 5 yards of 1-inch black, and 5 yards of white satin baby ribbon are required. 7 inches of 1 1/4-inch ribbon in each leaf.

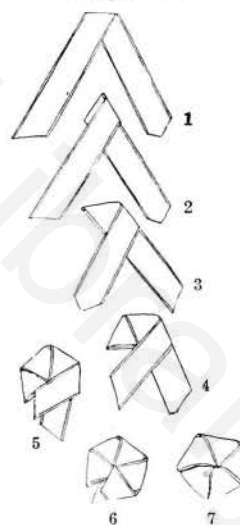
Outside Back Cover

Hat ornament 7 inches by 4 of 1/2-inch novelty ribbon with overlapping points of velvet baby ribbon.

Evening bag of 7-inch satin ribbon trimmed on each side with loops of 3/4-inch satin ribbon applied in circles with center of rosebuds such as described above.

The rose corsage requires 6 yards of 1-inch shaded grosgrain ribbon. The ribbon is gathered on one edge and tacked in a spiral to a small ball of cotton which forms the foundation of each flower. Seven inches of 3/4-inch ribbon are required for each leaf.

Detail of Button on Page 34



Fold ribbon as in Fig. 1. Then bring right-hand ribbon over left-hand ribbon, Fig. 2. Again bring right-hand ribbon over left to form Fig. 3. Repeat 3 times, Figs. 4, 5 and 6. Then draw ribbon together, tack end under other side, Fig. 7.

RIBBON GIFTS TO DECORATE THE BOUDOIR



This stately doll which serves as a telephone screen is dressed in five yards of nine-inch ribbon. Seven yards of one-half inch ribbon is pleated to form trimming. First wind wire frame with narrow ribbon.



The boudoir lamp shade is made of silver gauze, georgette crepe, trimmed with box-pleated lavender velvet ribbon and box-pleating of satin ribbon. First wind the wire foundation with narrow ribbon, run a delicate line of fine liquid glue on top edge of frame and press gauze firmly to it holding until dry. In using glue, pour a small quantity into a tiny saucer and do not use for several minutes, or until glue forms a silky thread when taken up on a small spreader to apply to material.



The pincushion proper is covered with a founce of ribbon attached to the body of the doll with a line of liquid glue lightly applied. The tiny rose may be made as described on page 5. The dress requires 1 3/4 yards of 4-inch ribbon and the bows 1 yard of 1-inch ribbon.



The ribbon covering is attached to the edge of the glass finger bowl by a fine line of liquid glue lightly applied. The flat cardboard top is padded, covered and trimmed with spiral rows of picot ribbon.



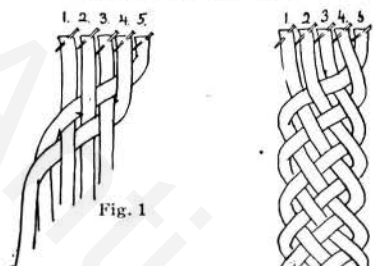
Ribbon in different shades is gathered and applied in five rows to a satin foundation.



On the pillow 20 inches in diameter, ribbon 7 1/2 inches wide is shirred to fit the circumference. Velvet ribbon trimming.

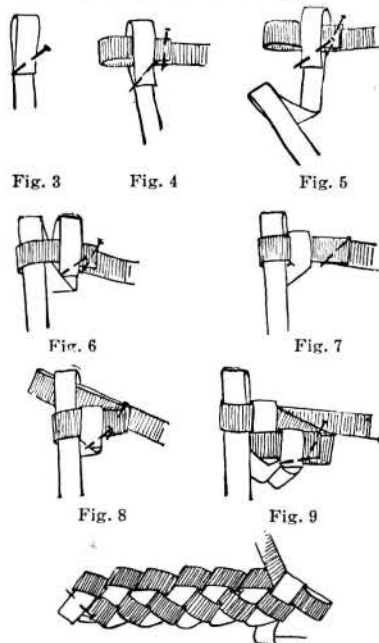
DIRECTIONS FOR MAKING TRIMMINGS

Ribbon Girdle



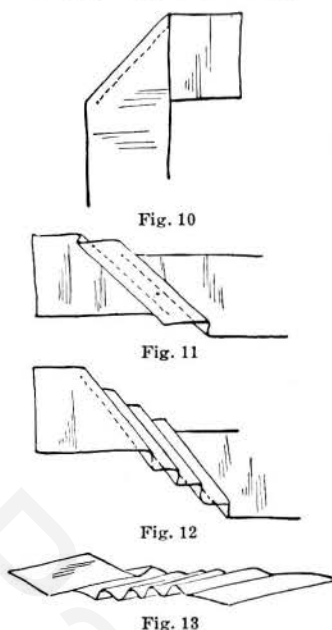
A five strand girdle is not as intricate as is generally believed. It is made by pinning five pieces of ribbon in a row, as in Fig. 1, and weaving them together by taking the fifth strand and laying it under the fourth, then over the third, under the second and over the first. Then begin weaving with the fourth strand, over and under the other strands, just as you did before, and repeat this, each time using the last strand at the right for the weaving. See Fig. 2.

Loop Braiding

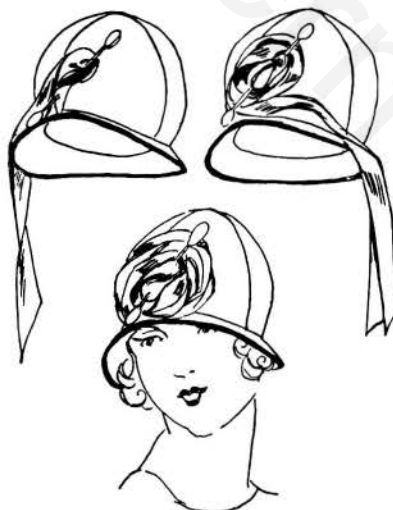


To make, one folds ribbon with end on top and pins, Fig. 3. Another piece is similarly folded and pinned, always with top end up, and inserted end side up through the first loop, Fig. 4. The first ribbon is picked up as in Fig. 5 and inserted through loop of second ribbon, Fig. 6, pulled tightly into place. Ribbon number 2 is picked up as in Fig. 5 and run through second loop made by first ribbon, as in Fig. 7, continuing as in Figs. 8 and 9.

Diagonal Tucking

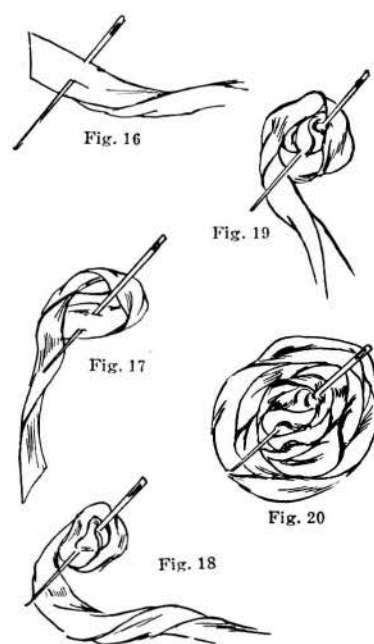


Interesting cocardes may be made by swirling this diagonally tucked ribbon. Belting or grosgrain ribbon may be used. Fold as in Fig. 10, make one-quarter inch tucks on bias one-quarter inch apart, Fig. 11, continuing as in Fig. 12. Fig. 13 shows the reverse side.



In this manner the time for making the flat rose is materially lessened. When a large flower for a hat is desired one of the large double-headed hat pins is used. Wider ribbon, treated in the same manner, as above, will produce excellent results. The pin is not withdrawn. A large flower of this kind can be made within a half minute.

The Three-minute Flower

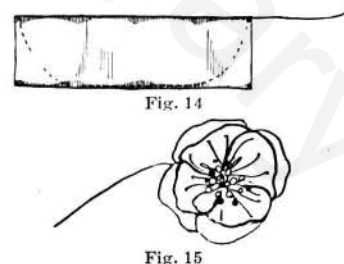


Here is the exact opposite of the century plant. Far from requiring a hundred years to burst into blossom, this flower takes but three minutes at the most.

Flat flowers for ornamenting pillows, boudoir accessories, baby things, lingerie and frocks are made very simply—in this fashion.

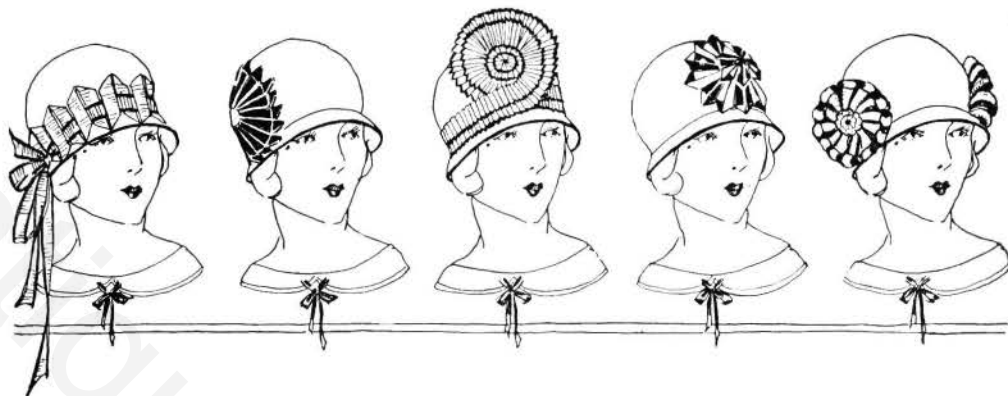
Instead of laboriously twisting a piece of ribbon in the fingers to get a small rose or rosette, one may now, as quick as a wink, make an entire flower by taking a long needle and catching one end of the ribbon to the material which is to be decorated with the flower, as in Fig. 16. The ribbon is then twisted underneath the two ends of the needle, as illustrated in Figs. 17, 18, 19 and 20. The entire operation of twisting the ribbon underneath the needle should only take a few seconds. Another needle which has been threaded is used to tack down this flower, wherever it is deemed necessary, to gain the desired results.

Four-petaled Flower



Four petals are stitched as in Fig. 14 and drawn together with stamens in center as in Fig. 15.

HOW TO FASHION VARIOUS FLOWERS



Five Ways of Trimming the Same Hat

Ribbon is the Crowning Glory of the Cloche Shape

Many ingenious women use the one hat for varied occasions, changing its identity by snapping on or pinning on different ribbon trimmings to carry out the color scheme or the spirit of the costume.



HAT 1.
Fold ribbon as shown in Figs. 1 and 2 and run a contrasting ribbon through every other fold as indicated in Fig. 2.



HAT 2.
Fold ribbon as illustrated in Fig. 3 and then as in Fig. 4 and sew on a buckram foundation around in a circle as in Fig. 5.

Morning Glory



Fig. 13

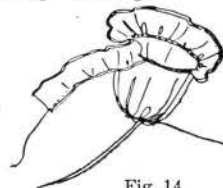
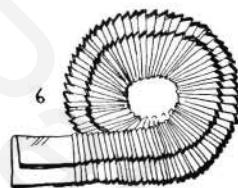
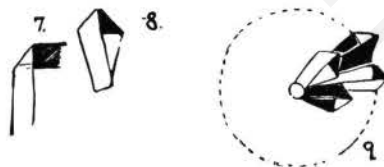


Fig. 14

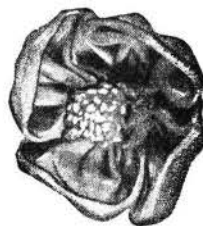
Morning glories add their loveliness to a graceful spray or a wreath. The ribbon is cut, sewn together and gathered at base as in Fig. 13. A narrow ribbon is gathered and sewn to edge, and flower drawn up as in Fig. 14.



HAT 3.
A piece of five-inch ribbon is folded over so that there is an inch of the lower piece showing. Have it side pleated and swirl it into a circle, as in Fig. 6. Finally, take one-half yard of two-inch ribbon and fold the same way into a smaller rosette for the center.



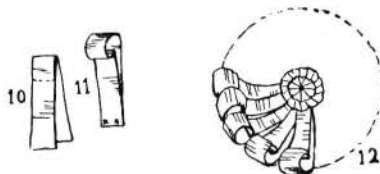
Wild Rose



Roses form an effective trimming, and are easily made. The stamens around which the petals are placed may be purchased in a millinery supply department.

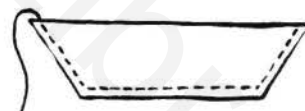
HAT 4.

A cocarde is made by twisting two-tone ribbon as illustrated in Figs. 7 and 8. The ribbon is laid out to show the two shades alternately light and dark, as in Fig. 9.



HAT 5.

This trimming is made by folding over a piece of wristwatch ribbon or ribbon slightly wider, placing an almost invisible tuck a half inch from the top of each loop, as in Figs. 10 and 11, then arrange the loops into a complete circle, as in Fig. 12.



Ribbon Strip for Petal, Showing Stitching



Shirred Petal



Petals Connected to Form Rose

EASY-TO-FOLLOW INSTRUCTIONS

Shirring and Plaiting

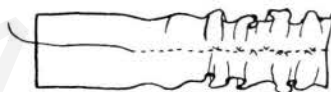


Diagram 1. Ribbon shirred through center. Requires $1\frac{1}{2}$ times as much material as covered space.



Diagram 2. Ribbon ruffled at one selvage. Twice amount of ribbon as covered space.



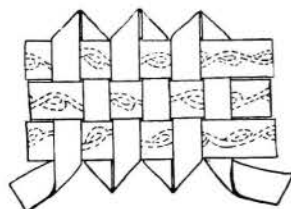
Diagram 3. Triangle to give pointed effect. Twice as much material as space to be covered.



Diagram 4. Ribbon side plaited for ruffle. Use twice as much material as space covered.



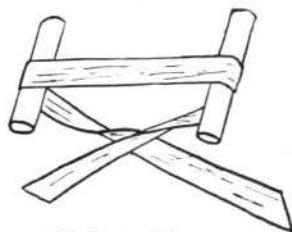
Diagram 5. Ribbon plaited in honey-comb effect. Use twice as much ribbon as space to be covered. Very effective trimming.



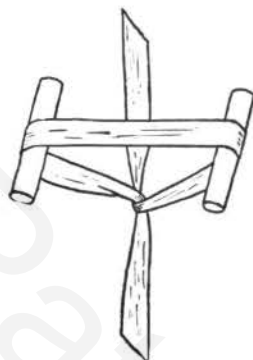
Lattice Work of Ribbon and Lace. Pointed Ends of Ribbon

Many articles of decoration or wearing apparel need only the above variation for trimming. The lace runs crosswise and the ribbon up and down, overlapping to form a point.

Rosettes or Single Bows Easily Made



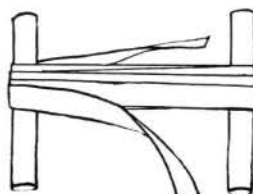
Twist on Fingers or Parallel Bars



Single Bow in Process of Knotting



Rosette Made as in Process 3

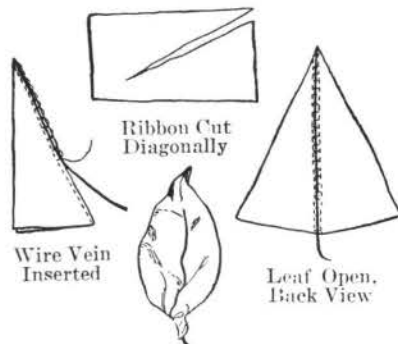


Twist Ribbon Around Many Times for Rosette



Single Bow as in Process 2

Simple Leaf



Finished Leaf

This type of leaf is very easily made and may be used with practically all the ribbon flowers shown in this book, if one desires.

Diagonal Stitching

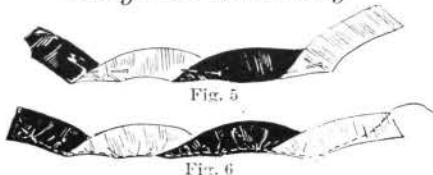


Fig. 5

Fig. 6

Diagonal stitching done on two-tone ribbon. The ribbon is folded as in Fig. 5, gathered as in Fig. 6, and drawn up to form black and white flower as on page 18.

Petal

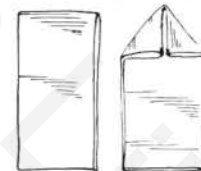
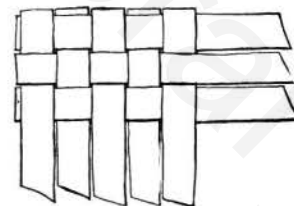


Fig. 3



Fig. 4

Many exquisite flowers and ornaments may be made from these petals, one of which is shown in ornament on page 19 especially good for dahlia and asters. The ribbon is folded as in Fig. 3, corners turned over as in Fig. 4, and base gathered.



Lattice Work of Ribbon. Ribbon Running Lengthwise and Crosswise

This is a simple form of decoration and is worked in the same manner as the lattice to the left. The crown of a hat, pillow, etc., may be decorated in this charming fashion.

ORIGINALITY IN RIBBON ACCESSORIES



Black satin ribbon mounted on a silver top with roses of ombre metallic plissé ribbon shading from pale pink to deep rose. Green metallic plissé ribbon leaves.

The sports band is designed for bobbed hair. The ribbon ends back of the ear on either side and is there attached to 1/2-inch wide elastic which passes under the hair in the back. 1 1/4 yards of ribbon from 5 to 7 inches wide are required.



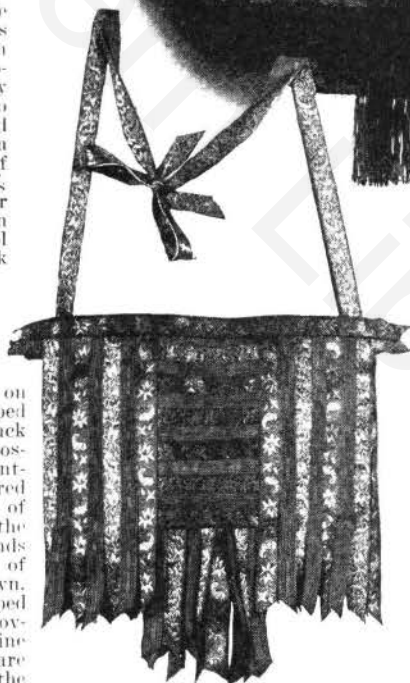
In the large bow worn on the side at the hip line and especially designed for the one-piece frock we have one of the most attractive of the season's newest accessories. The wide Roman stripe here used is very smart, but many plain and double-faced ribbons will prove equally so. It is made with two loops and one end finished with a knotted fringe of crochet silk. 1 1/2 yards of 6- or 8-inch ribbon and one spool of crochet silk are required.



The draped hat on the left is developed in 6 1/4-inch black satin-faced grosgrain ribbon mounted on an unwired turban shape of erinoline. On the left side the ends of four pieces of ribbon are sewn. These are draped over the hat, covering the erinoline surface and are fastened on the right side, with two ends reaching to the shoulder.

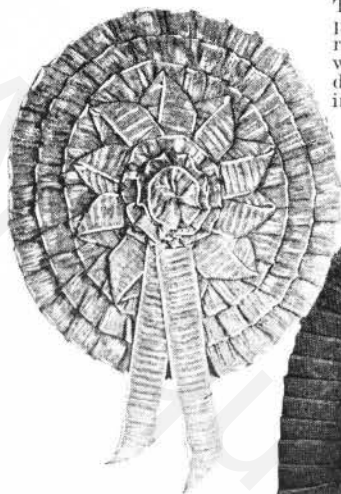


The scarf above is made of two lengths of soft ribbon 2 1/2 yards long. One is navy blue, the other a soft, golden orange. The binding and trimming bands are 2 1/2-inch white grosgrain. Blue and orange crochet silk are combined in the knotted fringe. The small hat is trimmed with 2 1/2-inch white grosgrain ribbon laid in cartridge pleats, ending in a flat tailored bow in back. The cartridge pleats should be tacked to a foundation band first.



See page 26 for descriptions of bags shown above.

PRACTICAL COCARDES FOR HATS AND DRESSES

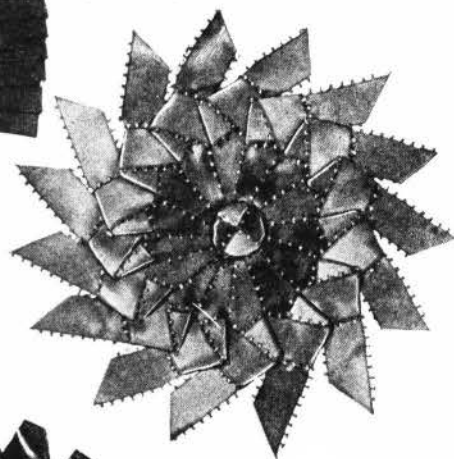


This delightful rosette for frock or cha peau is made with rows of shirred plissé ribbon attached to a circular foundation, working from the outside in. Contrast of design is furnished by the ribbon folded in points and the two saucy streamers.



A unique cocarde for the tailored hat is pictured above. Two rows of black ribbon and one of novelty ribbon are tacked in pleats to a crinoline foundation. The tailored bow combining the two ribbons used is attached to a cross piece of crinoline. This cocarde requires 2 yards of 1-inch grosgrain ribbon and 1 yard of novelty ribbon.

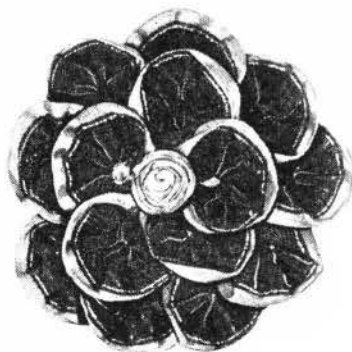
The ornament below looks intricate but it isn't. It is merely pieces of two-toned picot ribbon tied into very flat knots and arranged in a circle on a foundation 5 inches in diameter. The button in the center is made over crinoline by folding the ribbon so that the colors alternate in quarters. It requires 3 yards of 1-inch ribbon.



The ornament below illustrates one of the many charming effects obtained with novelty ribbon with metallic edge. 5-inch lengths are gathered into small circles and attached to a crinoline foundation. Infinite variety of design may be secured by changing the shape of the foundation and the arrangement of the circles. The rosette in the center is made of twisted gold ribbon wound in an ever widening circle and tacked to foundation.

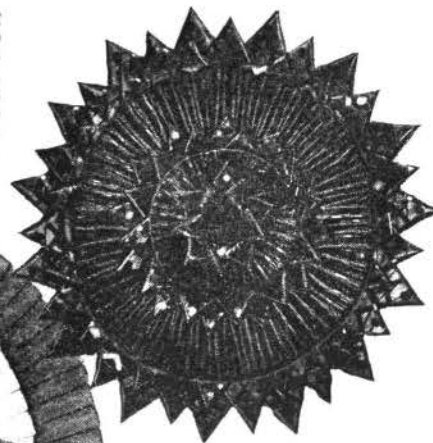


This handsome fan-shaped cocarde above has achieved a place on many of the most modish hats of the season. Small loops are dented slightly with the finger so that a portion of the ribbon folds in when the loop is pressed firmly. Three rows of these loops are tacked to the foundation working from the top down. For the rosette, ribbon is twisted and tacked into place in ever-widening circles working from the center out. It uses four yards of 1-inch ribbon.

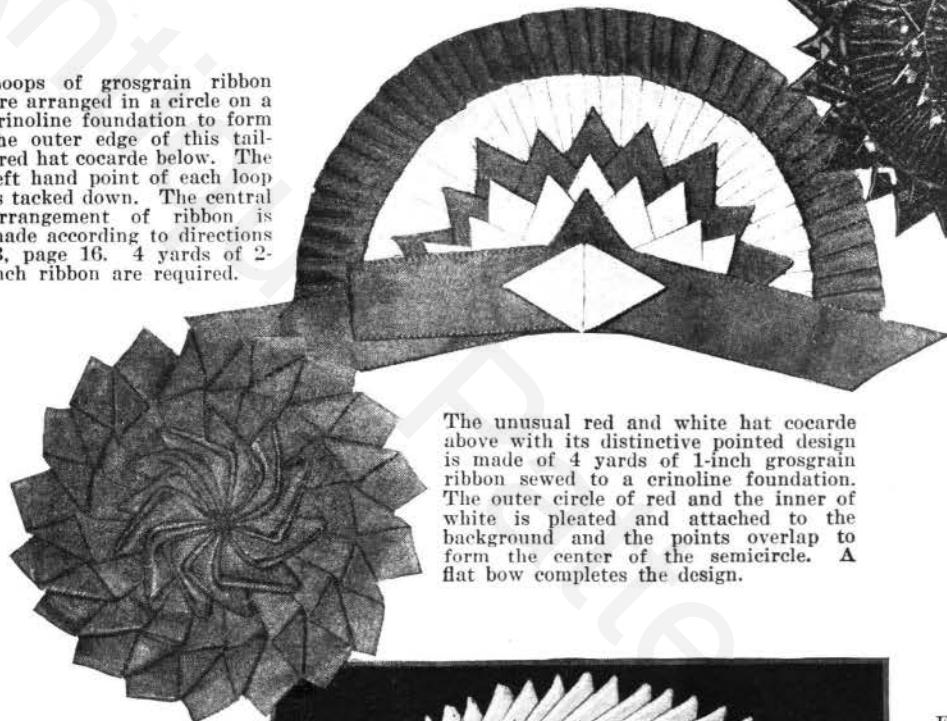


CLEVER NEW RIBBON FANCIES

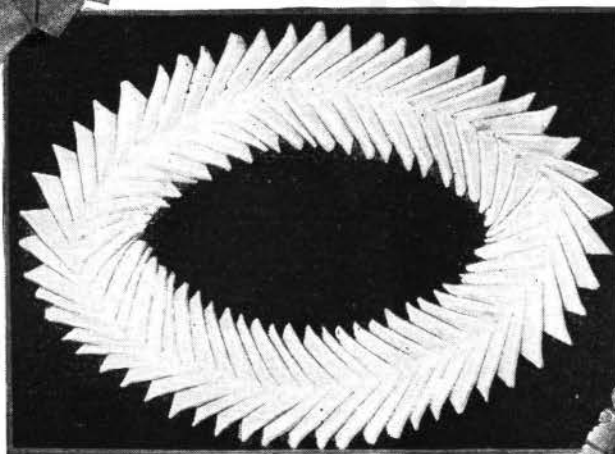
Points and pleats are combined in this stunning cocarde (right) made of auto tourist ribbon. Two rows of ribbon are folded in points as in Fig. B on page 16 and sewed on the crinoline foundation, working from the circumference in. The ribbon is sewed to the foundation in cartridge pleats to form the next row; pleats alternate with points as you work toward the center. $3\frac{3}{4}$ yards of ribbon $1\frac{1}{4}$ inches wide are required.



Loops of grosgrain ribbon are arranged in a circle on a crinoline foundation to form the outer edge of this tailored hat cocarde below. The left hand point of each loop is tacked down. The central arrangement of ribbon is made according to directions B, page 16. 4 yards of 2-inch ribbon are required.



The unusual red and white hat cocarde above with its distinctive pointed design is made of 4 yards of 1-inch grosgrain ribbon sewed to a crinoline foundation. The outer circle of red and the inner of white is pleated and attached to the background and the points overlap to form the center of the semicircle. A flat bow completes the design.



For evening gown or dressy hat, this charming rosette below is made of $\frac{3}{4}$ -inch scalloped ribbon. The three outer rows of gathered ribbon are tacked to a foundation $2\frac{1}{2}$ inches in diameter, working from the outside in. The center is formed by sewing the ribbon in circles and working from the inside out.



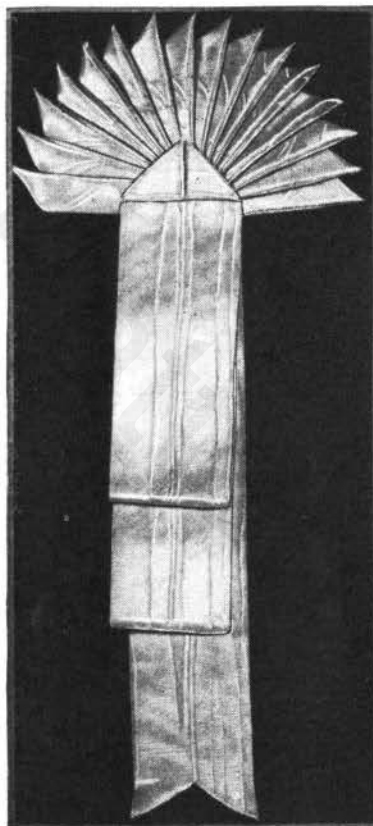
The ornament above is formed of white grosgrain ribbon upon an oval foundation of crinoline. The ribbon is folded as in Fig. B, page 16 and instead of being drawn into a circle is applied flat and tacked to the foundation, using the reverse side to that shown in the cocarde in Fig. B. It requires 4 yards of 1-inch grosgrain ribbon.

GIRDLES THAT MAKE A SMART FROCK SMARTER

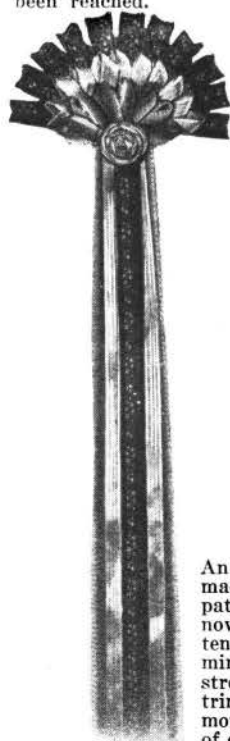


The feature of the girdle above is the way in which the $\frac{7}{8}$ -inch two-tone ribbon has been manipulated. Two pieces as long as necessary for the girdle measurement form parallel lines, one showing the dark side and the other the light side. A third piece of ribbon is run under and over, starting with the dark side out on the light strand, going under the dark strand, turned back so that the light side is out and going under the light strand; repeat until end of girdle has been reached.

The very smart cocarde illustrated below is developed in $2\frac{1}{2}$ -inch moire ribbon. The cocarde proper may be made by following the directions given on page 16, Fig. B. When 14 points have been made they are stitched flat and held by the mitred point heading the loops and streamer. 4 yards of $2\frac{1}{2}$ -inch ribbon are required.

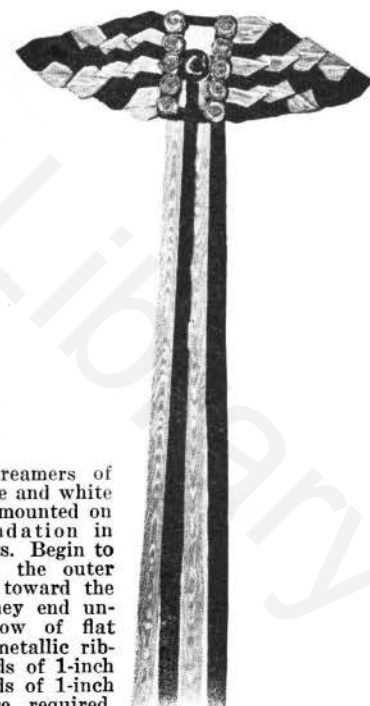


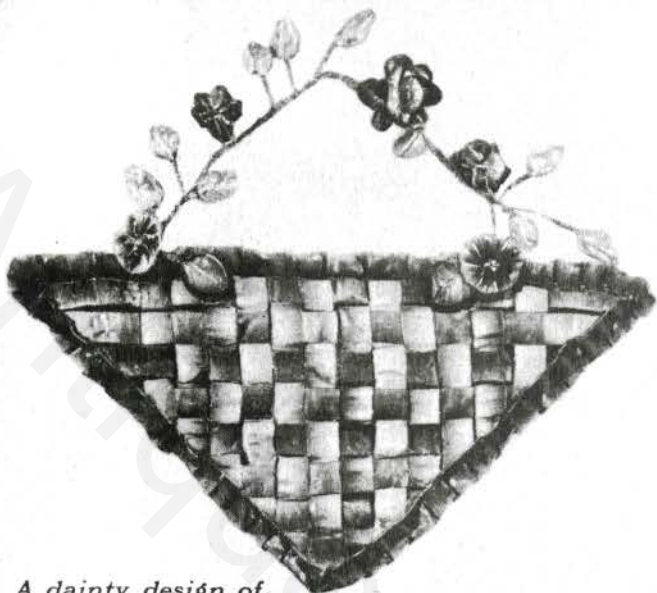
The girdle above is developed in navy blue $1\frac{1}{4}$ -inch picot edge grosgrain ribbon. The unusual trimming is of green metallic plissé ribbon made to form buttons. Directions for making these buttons will be found on page 26. 5 yards of $1\frac{1}{4}$ -inch and $5\frac{1}{4}$ yards of $\frac{5}{8}$ -inch ribbon for buttons are required.



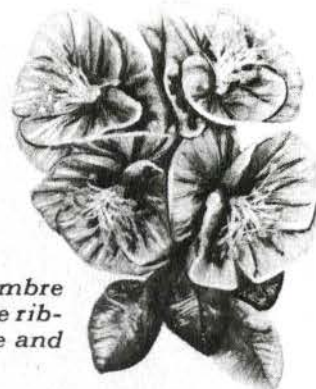
An interesting ornament made of three different patterns and colors of novelty ribbon. It is intended for a dress trimming; without the streamers, a striking hat trimming. The loops are mounted on a semi-circle of crinoline. Three yards of 1-inch ribbon are required, 1 yard of each pattern.

Cocardes and streamers of 1-inch black moire and white moire combined, mounted on a crinoline foundation in overlapping points. Begin to apply points on the outer edges and work toward the middle, where they end under a double row of flat swirls of silver metallic ribbon. Three yards of 1-inch black and 3 yards of 1-inch white ribbon are required. Without the streamers this will make a hat ornament of distinction.

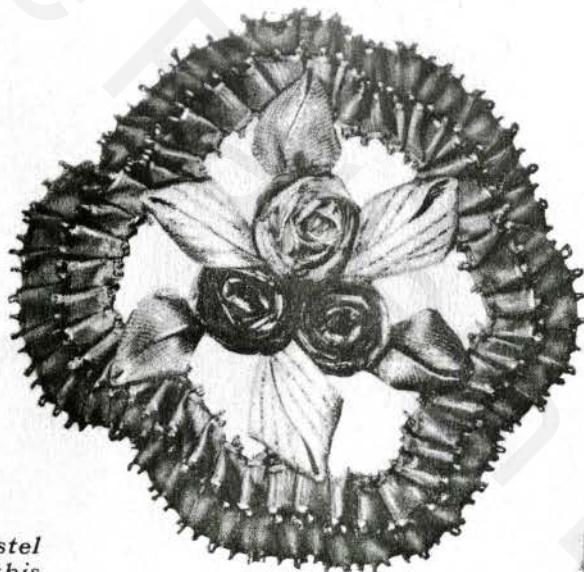




A dainty design of ombre metallic ribbon in harmonizing colors.

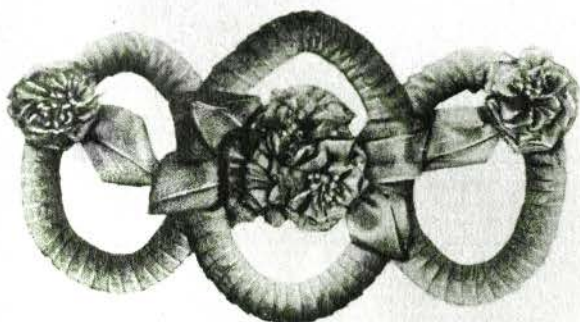


Corsage of ombre metallic plisse ribbon in orange and green.



For hat or girdle in harmonizing colors of picot and metallic ribbons.

Ribbons in pastel shades make this corsage a thing of beauty.



Shoulder corsage of black and white satin ribbon and metallic leaves.



Gay touches from the garden of ribbon. See page 26 for details.

RIBBON ART



*Instructions for Making these Simple and Charming
Novelties will be found on page 26*