

The Antique Pattern Library

For more information, please see our website at: <http://www.antiquepatternlibrary.org>



This is a scan of an antique book that is, to the best of our knowledge, in the public domain. The scan itself has been photo-edited for readability, and is licensed under the **Creative Commons** Attribution-NonCommercial-ShareAlike License. To view a copy of this license, visit <http://creativecommons.org/licenses/by-nc-sa/2.5/> or send a letter to Creative Commons, 559 Nathan Abbott Way, Stanford, California 94305, USA.

You may share copies or printouts of this scan freely. You may not sell copies or printouts.

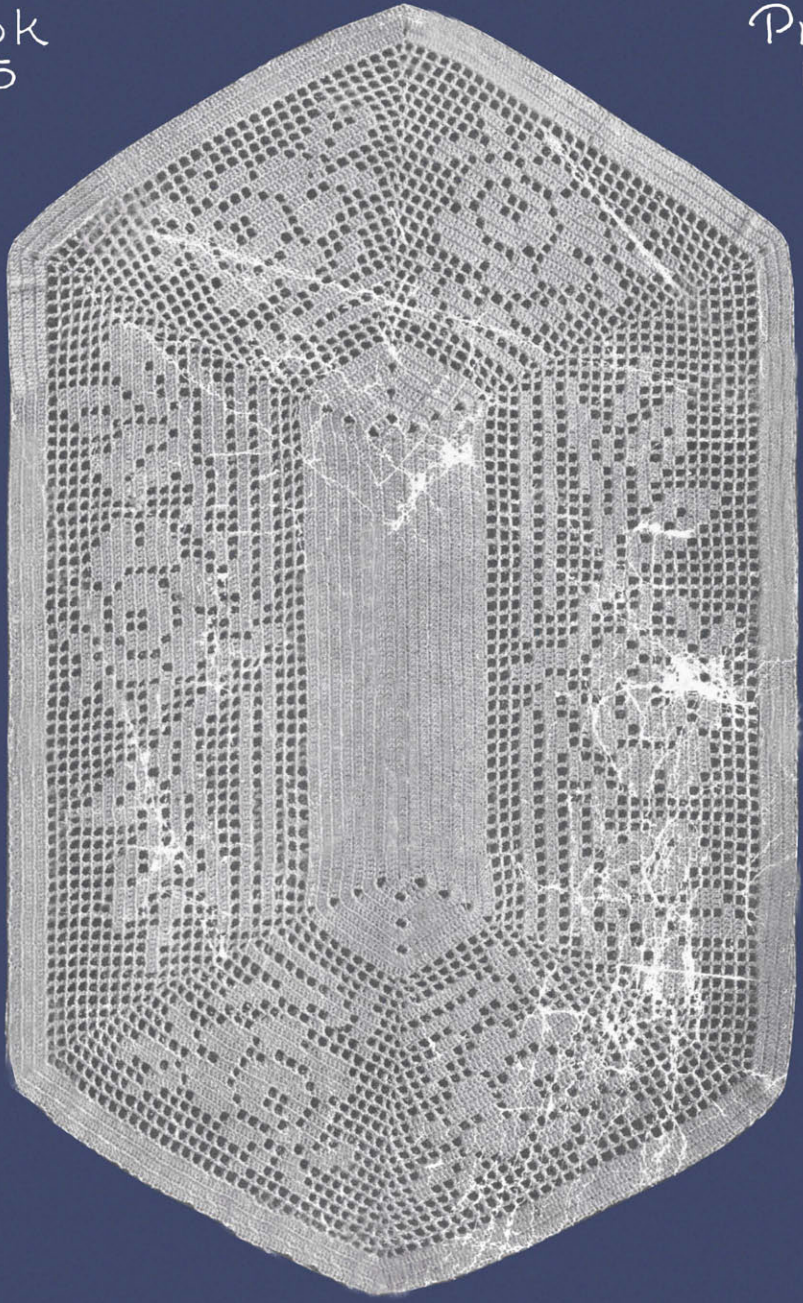
Donated by

Judith Combs

11/2010

Book
No. 5

Price
10¢



Corticelli

LESSONS IN CROCHET

CORTICELLI MERCERIZED CORDONNET

CROCHET COTTON



Made by Corticelli Silk Mills

Excellent for Crocheting, Tatting, and Lacemaking



Art. 66

Made from mercerized cotton of the finest Sea Island quality. It has a perfect "cable-laid" twist, a snowy whiteness and a sparkling lustre. Excellent for crocheting and tatting. Look for the same Kitten Head you always demand on your spool silk.

Art. 66 is made in Snow White, sizes 3, 5, 10, 15, 20, 30, 40, 50, 60, 70, 80 and 100.

Ecru No. 356, in sizes 3 to 70 inclusive.

Colors: Light Blue No. 208, Blue No. 213, Delft Blue No. 215, Pink No. 291, Beauty Pink No. 294, Yellow No. 345, Wistaria No. 387, and Green No. 246, in sizes 10, 30, 50 and 70 only; also in Black No. 470, in sizes 3, 5 and 10 only.

Shaded Colors: Size 30, only, made in Shaded Blue No. 283, Shaded Pink No. 284, Shaded Yellow No. 285 and Shaded Wistaria No. 287.

Linen No. 355 made in sizes 3 to 70 inclusive.

For Tatting Try Corticelli Mercerized Cordonnet Art. 43

This is the same Cordonnet Cotton as the famous Art. 66, but put up in small size balls of $\frac{1}{8}$ oz. each. Made especially for tatting in size 70 only in White and the following fast dye colors: Light Blue No. 208, Blue No. 213, Delft Blue No. 215, Pink No. 291, Beauty Pink No. 294, Yellow No. 345, Wistaria No. 387, and Green No. 246. Shaded colors: Shaded Blue No. 283, Shaded Pink No. 284, Shaded Yellow No. 285 and Shaded Wistaria No. 287.



Art. 43



Made by
Corticelli Silk Mills, Florence, Mass.



"THE MORNING RIDE"
 Pillow Cover in Filet Crochet No. 468. See Pages 24-25

Corticelli

LESSONS IN CROCHET

INCLUDING SOME DESIGNS FOR KNITTING AND
 TATTING AND FOR THE NEW HARDANGER CROCHET

BOOK NO. 5

PUBLISHED BY

THE CORTICELLI SILK MILLS
 FLORENCE, MASS.



OXXXX-A-O-CR-2



Introducing Corticelli Book No. 5

The wonderful demand that we are having for Corticelli instruction books in the art of lace making cannot be construed as anything else but a great public endorsement of these works. It is really not surprising when one considers the originality, variety and merit of Corticelli designs, the clear and beautiful manner in which they are illustrated and the explicit instructions given for their execution.

We present herewith designs in attractive dining room and bedroom sets, which should prove most acceptable. Also new designs in edgings and insertions and some examples of Hardanger lace, so called because of its close resemblance to Hardanger embroidery, which promises to become popular. The collar and cuff sets on pages 20 and 26 are unusually pleasing and may be made in many color combinations effectively to set off the costume.

The Importance of Selecting the Right Materials

People buy shoes, hosiery, underwear and many other articles by name, but often are not so particular when it comes to selecting crochet cottons and silks. This is a mistake. There is just as much difference in the quality of crochet cottons and silks as in other articles of merchandise. Is it any wonder that the work does not turn out as desired at times? The wisest course is to buy materials of proven reputation, sold under a well-known trade-mark and guaranteed by a concern of unquestioned financial standing.

We cannot too strongly recommend that the materials mentioned in this book be used for the different articles to insure success.

The perfect "cable laid" twist of **Corticelli Mercerized Cordonnet** gives the required firmness in the work, while its finish and sparkling luster insure the lasting beauty so much desired in lace work.

Princess Pearl Crochet Cotton has the softness, luster and loftiness desired for certain kinds of articles, and the smooth, even thread makes working with it a delightful occupation.

Corticelli Crochet and Knitting Silk is a smooth, even, and durable thread with a rich, enduring luster, sure to answer the demands of the most particular.

Corticelli Sweater Silk has a fullness and soft finish especially desirable for such articles as sweaters, vests, girdles, babies' caps, etc., but it is not intended for articles subjected to hard wear.

These materials come in many colors and in the right sizes for different kinds of work. Be sure to call for them by name, instead of asking for simply "crochet cotton" or "crochet silk"; also look for the name on the label.

To Launder

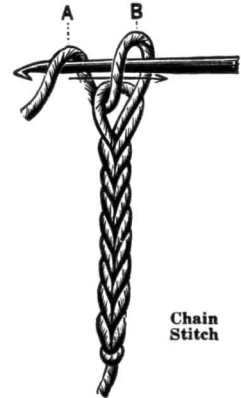
To launder crocheted pieces made of Corticelli cottons, use a warm suds made of Ivory Soap Flakes, rubbing but little. Rinse thoroughly, roll in a turkish towel and let stand for a couple of hours, then place on a flat surface, pinning as near as possible into the original shape and carefully drawing out the edge, and let dry.

Sweaters should be washed by kneading (not rubbing) between the hands in a suds made as above, always holding the sweater **UNDER** the water, so as not to stretch it. When thoroughly cleaned rinse well in cold water. Have ready a thick paper, and after squeezing out all the water, place garment on the paper and pull as near as possible into its original shape and place on a flat surface to dry. When dry, shake out thoroughly.

Abbreviations and Explanation of Stitches

ch.	chain	d. t.	double treble
sl. st.	slip stitch	l. t.	long treble
s. c.	single crochet	com. t.	combination treble
h. d.	half double crochet	p.	picot
d. c.	double crochet	cl.	closed block
t.	treble crochet	op. (or m.)	open block or mesh

Chain: Make a slip loop on crochet needle. With the hook draw the thread through this loop. Continue, always drawing the thread through the last loop, to form a chain of the desired length. See illustration.



Chain
Stitch

Slip Stitch: Put needle, holding one loop, through work and draw thread through, and pull loop thus made through first loop.

Single Crochet: Put needle, holding one loop, through work and draw thread through. This will leave two loops on needle. Throw thread over needle and draw through the two loops. See illustration.

Half Double Crochet: Throw thread once over needle, put needle into work and pull through; this leaves three loops on needle. Throw thread over needle and pull through three loops at once.

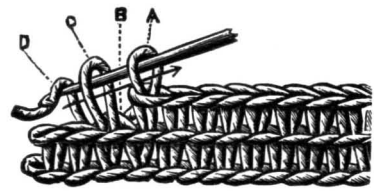
Double Crochet: With needle holding one loop, throw thread once over needle, put needle into work and draw thread through. This will leave three loops on needle. Throw thread once over needle and pull through two. Again throw thread over needle and pull through remaining two. See illustration.

Treble Crochet: Wind thread twice around needle, insert needle into work and pull thread through, leaving four loops on needle. Work off two at a time the same as for Double Crochet.

Double Treble: Wind thread three times around needle and insert into work and pull thread through, which will leave five loops on needle. Work off two at a time, the same as for Double Crochet.

Long Treble: Wind thread four times around needle and insert into work and pull thread through, which will leave six loops on needle. Work off two at a time the same as for Double Crochet.

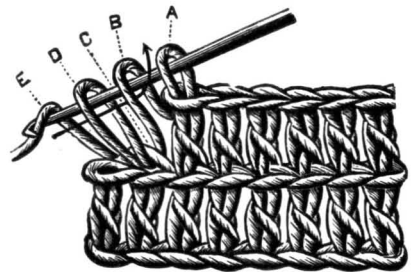
Combination Treble: Wind thread twice around needle and insert into work and pull thread through, thread over needle and pull through two, thread over needle and pull through two, leaving two loops on the needle, thread over needle twice again, insert into work and pull through, thread over needle and pull through two, thread over and pull through two, leaving three stitches on the needle. Thread over and pull through three.



Single Crochet

Picot: Make a chain. Skip three chain stitches and make a single crochet. Chain 4, catch back into the first chain with single crochet. Make about four single crochet stitches between picots.

Filet Crochet: Filet crochet consists of open and closed blocks or meshes. The foundation chain is always three times the number of blocks or meshes in the first row, plus six. Start the first row in the ninth chain from hook. At the end of a row always ch. 5 to turn when the next row begins with an open block, and ch. 3 to turn when the next row begins with a closed block. To add open meshes at the beginning of a row, work the required number of chain (which will be three times the number of meshes required) plus five for turning, and commence next row in ninth stitch from hook. To add open meshes at the end of a row, ch. 2, d. t. in the same place last d. c. was made; if more spaces are desired, again ch. 2, d. t. in middle of last d. t. To increase a row by adding one closed block at the beginning, ch. 6, d. c. in 4th st. from hook, d. c. in next 2 sts. To add a closed block at end of row, d. t. in base of d. c., (d. t. in base of d. t.) twice.



Double Crochet

When the edge of filet crochet is in open mesh it is advisable to reinforce with a row of s. c. after the pattern is finished.



Crocheted Waist No. 444

The woman who is fond of dainty needlework will find a fascination in making this charming garment and a satisfaction in possessing a dressy waist developed entirely through her own efforts. It should not, however, be undertaken by the amateur worker. The pattern is simple, but care should be taken to have the stitches even and the work neatly done. It is made with drop shoulder and convertible collar and fastens down the front with large Egyptian beads and crocheted loops.



Materials: Corticelli Mercerized Cordonnet, Art. 66, 18 balls White, Size 50; steel hook No. 12.

Although the pattern in the waist is not at all complicated and brings into use only the simple stitches with which every crochet worker is familiar, the design is unusual and perhaps a few words of explanation will enable the worker to better understand the instructions given below. The work commences at the lower part of the sleeve where it joins the cuff. In the first row there are 30 round open meshes. The next row is in triple mesh. These two rows of single and triple mesh are repeated alternately. Widening begins in the 7th row by working a single mesh in the first mesh of the triple of the row below. This will give an extra group of triple mesh in the row that follows. Beginning with the 15th row the work is left open at end of row, and worked back and forth, and widened one triple at each end for 16 rows more, making 30 rows in all. This is the ending of the sleeve proper. Then the open mesh for the shoulder begins and is simply a chain of 7 joined into center mesh of mesh below with a h.d.c., then chain of 5 joined in same mesh with a h.d.c., thus making the mesh appear as the chain of 7, while it is only 5. The entire shoulder is worked in this way, round and round, until there are 11 rows without widening, then 3 rows widening each time around. The next row is worked the same, widened at each end, but not joined. The next two rows are worked the same, then the work is widened 3 meshes each row until there are 12 rows. Here the work is narrowed by dropping 6 meshes at each end.

Instructions: Ch. 200, join, ch. 7, s.c. in same st. where ring is joined, ch. 7, skip 6 st., s.c. in the 7th, ch. 7, s.c. in the same st., ch. 7, skip 6 st., s.c. in 7th, ch. 7, s.c. in same st.; repeat to end of round, making about 30 round open meshes. *2d row:* Ch. 7, s.c. in first mesh, ch. 7, s.c. in same mesh, ch. 7, s.c. in same mesh, ch. 7, s.c. in same mesh. There should now be 3 open meshes in the one mesh of previous row. Join in next round mesh with s.c., ch. 7, s.c. in same mesh, ch. 7, s.c. in same mesh, ch. 7, s.c. in same mesh; repeat to end of row.

3d row: S.c. in middle mesh of the first group of three, ch. 7, s.c. in same mesh, ch. 7; repeat to end of row. *4th row:* Triple mesh, same as 2d row. *5th row:* Single mesh, same as 3d row. *6th row:* Triple. *7th row:* Single mesh. In this row commence to widen the work by working the first single mesh in the first mesh of the first triple in the row below, work a single mesh in the middle mesh of the same triple, then finish the row with a single mesh in each middle mesh as in preceding rows. *8th to 14th row inclusive:* Alternate rows of triple and single mesh, widening in each row by working the first single mesh in the first mesh of the first triple. *15th to 30th row inclusive:* Work the same as the first six rows, without widening. The last row will be single mesh.

Drop Shoulder: Ch. 5, h.d.c. in single mesh of sleeve, ch. 7, h.d.c. in same mesh, ch. 5, s.c. in next mesh; repeat. *2d to 11th row inclusive:* Same as 1st row. *12th to 14th row inclusive:* Same as previous rows, widening one mesh at the end of each row. Do not join the 12th row at the end, as from now on the work will be crocheted back and forth instead of in rounds. *15th and 16th rows:* Widen at the end of each row. *17th to 27th row inclusive:* Same, widen 3 meshes at each end. *28th row:* Work the same until you come to the sixth mesh from end, turn. *29th row:* Work to within 6 meshes of the opposite end. *30th to 73d row inclusive:* The same as previous row. There should now be 45 meshes across and the work when held out straight should measure about 18 inches wide and 22 inches wide where the 6 meshes at each end were left off—this being the part that sews together under the arm to hold the yoke in shape. Work the other sleeve and shoulder in the same way and join the back.

Collar: Ch. 6, s.c. in first mesh of yoke, ch. 6, s.c. in next mesh, ch. 6, s.c. in next mesh; repeat around top of neck. *2d to 6th row inclusive:* Same as previous row. *7th to 18th row inclusive:* The same as previous rows, but work with chains of 7 instead of 6. Finish edge with ch. 12, join in second mesh, ch. 12, join in third mesh, continue across, turn, ch. 12, join in 12, join in chain directly over top of open mesh, ch. 12 and continue across, turn. Fill each chain of 12 with s.c.



Long Cuff to Sleeve: Ch. 1, join on bottom of sleeve, ch. 12, s.c. in fifth st. of ch. 12, thus making an open mesh on the chain of 12, turn, ch. 7, s.c. in open mesh, ch. 7, s.c. in same mesh, ch. 7, s.c. in same mesh (this makes group of 3 meshes), turn, ch. 12, turn, s.c. in middle mesh, ch. 7, s.c. in middle mesh; repeat until you have made 3 meshes in middle mesh; ch. 4, join in top of sleeve where the 12 chains were started, ch. 6, join in next mesh; repeat, making same pattern until 18 flowers are made, then crochet chain to bottom of last flower, join on long loop of 12 ch., ch. 7, join in point of next loop of 7; repeat until around. *2d row:* Start same as 1st row; repeat until there are eight rows.

Ruffle on Cuff: Ch. 8, s.c. in point of 12 ch., ch. 8, s.c. in same point, ch. 8, s.c. in next point, continue same around. *2d row:* Ch. 10, s.c. in first mesh of 8 ch., ch. 10, s.c. in same loop; repeat until there are four meshes in first mesh of 8 ch. Continue around, ch. 6, turn. *3d row:* D.c. in first mesh, * ch. 6, d.c. in same mesh, ch. 6, d.c. in next mesh; repeat from star.

Lower Part of Waist: Start at front. 1 s.c., join on yoke, ch. 7, s.c. in same st., ch. 7, s.c. in next mesh on yoke, continue until under arm is reached, turn. *2d row:* Ch. 7, join in last mesh on first row, ch. 7, s.c. in same mesh; repeat until 3 meshes are in each mesh on first row. *3d row:* Single mesh in middle mesh of each group of three. *4th row:* Triple mesh. Continue alternating in this way until there are 26 rows down front, and continue same across back, joining on under arm. Then work other side of front in the same way, joining on under arm of back.

Ruffle on Waist: Ch. 10, turn; 3 h.d. in fourth st. from needle, ch. 2, 3 h.d. in same st., ch. 3, d.c. in first st. of foundation ch., ch. 5, turn; 3 h.d. in ch. of 2 in center of first shell, ch. 2, 3 h.d. in same space, ch. 5, turn; 3 h.d. in center of previous shell, ch. 2, 3 h.d. in same space, ch. 3, d.c. in center of ch. of 5, ch. 5, turn; continue for the desired length, break thread. Catch thread in center of ch. of 5, ch. 8, catch in center of next ch. of 5 with s.c., and continue until you have 5 loops of 8 ch., ch. 1, turn; work 15 h.d. in each of the first 4 loops of 8 ch., 8 h.d. in fifth loop of 8 ch., ch. 8, turn; s.c. in center of next scallop, ch. 8, s.c. in each of the remaining 3 scallops, ch. 1, turn; 15 h.d. in each of the first 3 loops, 8 h.d. in last loop, ch. 8, work 3 loops of 8 ch. in this row, ch. 1, turn; fill first 2 loops with 15 h.d., work 8 h.d. in third loop, make 2 loops of 8 ch. in next row, fill first loop with 15 h.d. and the 2d loop with 8 h.d., make 1 loop of 8 ch. in next row and fill with 15 h.d., work 7 more h.d. in each of the unfinished loops up the side, to point. Work another scallop in the same way and repeat to end of foundation shells. Break thread. Catch thread in point of shell, ch. 3, d.c. in first st. of scallop, ch. 3, skip 3 st., d.c. in next st., ch. 3, skip 3 st., d.c. in next st., which will bring work to beginning of second scallop down side, continue to end of row, ch. 3, turn. *2d row:* D.c. in d.c. of previous row, ch. 1, p., ch. 1, d.c. in next d.c. of previous row, and repeat to end of row.

Edgings for Handkerchiefs No. 445

Materials: Corticelli Mercerized Gordanet, Size 70. This material may be obtained in white or in colors, and in large (Art. 66) or small (Art. 43) balls.

Edge No. 445a: Roll edge of linen slightly and cover with a row of s.c. *2d row:* D.c. in s.c., * skip 2 s.c., d.c. in third st., s.c. on d.c. just made, 3 d.c. on same d.c.; repeat from *.

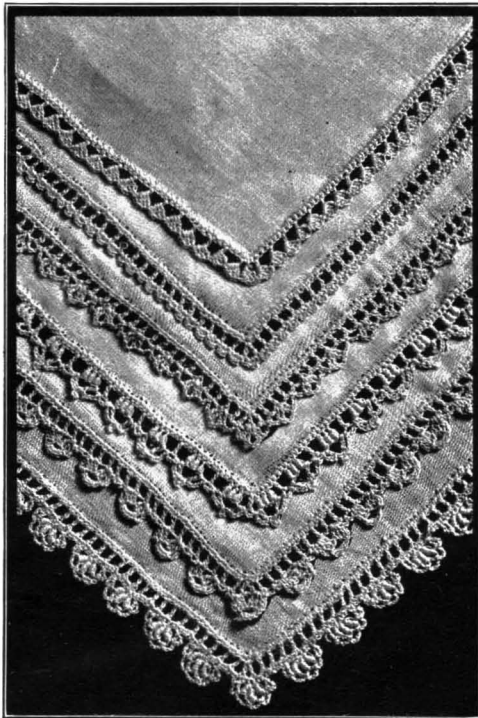
Edge No. 445b: Roll edge of linen and cover with a row of s.c. *2d row:* * Ch. 2, d.c.; repeat from *. *3d row:* * S.c. on 2 ch., ch. 1, d.c. on same ch., ch. 1, s.c. on same ch.; repeat from *.

Edge No. 445c: This pattern is $\frac{3}{8}$ of an inch wide. Roll edge of linen and cover with s.c. *2d row:* * Ch. 2, d.c.; repeat from *. *3d row:* S.c. on 2 ch., * ch. 3, skip 1 d.c., 2 d.c. in next, ch. 3, 2 d.c. in same d.c., ch. 3, skip 1 d.c., s.c. under next 2 ch.; repeat from *.

Edge No. 445d: This pattern is $\frac{3}{8}$ of an inch wide. Roll edge of linen and cover with s.c. *2d row:* D.c. in s.c., * ch. 2, skip 2 s.c., (roll stitch of 8 over in next s.c.) 3 times, ch. 2, skip 2 s.c., d.c. in next; repeat from *. *3d row:* Sl. st. under 2 ch. before d.c., ch. 3, * d.c. under next 2 ch., ch. 4, d.c. under same ch., p., d.c. on next 2 ch., ch. 4, sl.st. on same ch., ch. 3; repeat from *.

Edge No. 445e: This pattern is about $\frac{1}{2}$ inch wide. Roll edge of linen and cover with a row of s.c. *2d row:* * Ch. 2, d.c.; repeat from *. *3d row:* S.c. on 2 ch., * ch. 3, s.c. on next 2 ch., * ch. 3, s.c. on next 2 ch., ch. 4, 3 d.c. on same ch., skip 2 ch., 3 d.c. on next ch., ch. 3, turn, sl.st. in first d.c. of first cluster, turn, 4 s.c. on 3 ch., s.c. in d.c., ch. 4, sl.st. on same ch., ch. 3, s.c. on next 2 ch.; repeat from *.

Edge No. 445f: This edge is $\frac{1}{2}$ inch wide. Roll edge of linen and cover with a row of s.c. *2d row:* * Ch. 2, skip 2 s.c., d.c. in next; repeat from *. *3d row:* * (S.c. in d.c., 2 s.c. on 2 ch.) twice, s.c. on d.c., * ch. 2, (roll stitch of 10 overs in second d.c. at right, ch. 2) 3 times, sl.st. in third s.c. at right, turn, ch. 4, (sl.st. on 2 ch.) 4 times, ch. 4, sl.st. in last s.c., (2 s.c. on 2 ch., s.c. in d.c.) 4 times; repeat from *.



a
c
d
e
f

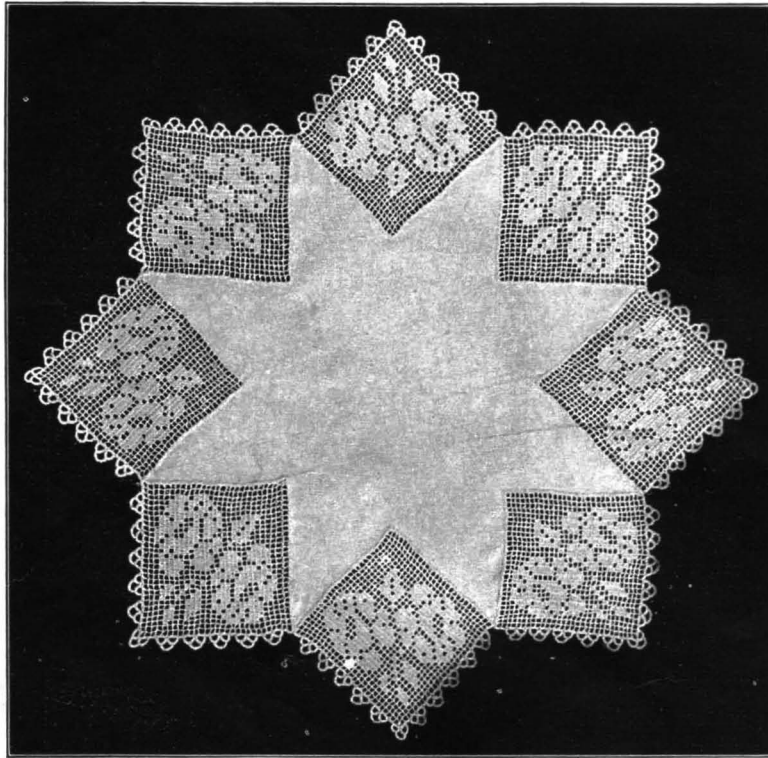


Star Centerpiece with Filet Crochet Rose Inserts No. 446

A center of white linen and eight filet rose inserts are used for this pretty 22-inch centerpiece. Each insert should measure about four inches square, and two sides of each are finished with the edge. Join the inserts at corners to form a circle and baste in position on the linen, then sew firmly with button-hole stitch and cut away the linen beneath the crochet. Square doilies to match centerpiece are made from the rose pattern finished with the edge.

Materials: Corticelli Mercerized Gordonnnet, Art. 66, 3 balls White, Size 70; steel hook No. 14.

Instructions: Ch. 92, 29 open meshes. *2d row:* 29 op. *3d row:* 8 op., 3 cl., 18 op. *4th row:* 13 op., 3 cl., 1 op., 1 cl., 1 op., 4 cl., 6 op. *5th row:* 6 op., 3 cl., 1 op., 3 cl., 1 op., 3 cl., 12 op. *6th row:*



Star Centerpiece No. 446

6 op., 1 cl., 5 op., 4 cl., 1 op., 5 cl., 1 op., 3 cl., 3 op. *7th row:* 2 op., 6 cl., 2 op., 3 cl., 1 op., 3 cl., 3 op., 3 cl., 6 op. *8th row:* 6 op., 1 cl., 1 op., 3 cl., 2 op., 2 cl., 1 op., 3 cl., 3 op., 5 cl., 2 op. *9th row:* 2 op., 1 cl., 2 op., 1 cl., 3 op., 4 cl., 5 op., 2 cl., 1 op., 2 cl., 6 op. *10th row:* 7 op., 2 cl., 1 op., 1 cl., 3 op., 1 cl., 2 op., 4 cl., 2 op., 3 cl., 3 op. *11th row:* 2 op., 2 cl., 1 op., 6 cl., 1 op., 4 cl., 2 op., 4 cl., 7 op. *12th row:* 11 op., 1 cl., 1 op., 5 cl., 5 op., 2 cl., 1 op., 1 cl., 2 op. *13th row:* 2 op., 3 cl., 1 op., 4 cl., 1 op., 5 cl., 13 op. *14th row:* 5 op., 3 cl., 2 op., 2 cl., 2 op., 2 cl., 1 op., 1 cl., 1 op., 5 cl., 1 op., 1 cl., 3 op. *15th row:* 4 op., 2 cl., 1 op., 2 cl., 1 op., 3 cl., 3 op., 3 cl., 1 op., 2 cl., 1 op., 2 cl., 4 op. *16th row:* 3 op., 1 cl., 1 op., 5 cl., 1 op., 1 cl., 1 op., 2 cl., 2 op., 2 cl., 2 op., 3 cl., 5 op. *17th row:* 13 op., 5 cl., 1 op., 4 cl., 1 op., 3 cl., 2 op. *18th row:* 2 op., 1 cl., 1 op., 2 cl., 5 op., 5 cl., 2 op., 1 cl., 10 op. *19th row:* 5 op., 4 cl., 4 op., 4 cl., 1 op., 6 cl., 1 op., 2 cl., 2 op. *20th row:* 3 op., 3 cl., 2 op., 4 cl., 2 op., 1 cl., 3 op., 1 cl., 2 op., 4 cl., 4 op. *21st row:* 3 op., 4 cl., 2 op., 1 cl., 6 op., 4 cl., 3 op., 1 cl., 2 op., 1 cl., 2 op. *22d row:* 2 op., 5 cl., 3 op., 3 cl., 1 op., 2 cl., 4 op., 1 cl., 8 op. *23d row:* 7 op., 1 cl., 4 op., 3 cl., 1 op., 3 cl., 2 op., 6 cl., 2 op. *24th row:* 3 op., 3 cl., 1 op., 5 cl., 1 op., 4 cl., 2 op., 1 cl., 3 op., 3 cl., 3 op. *25th row:* 2 op., 3 cl., 3 op., 2 cl., 2 op., 3 cl., 1 op., 3 cl., 1 op., 3 cl., 1 op., 1 cl., 4 op. *26th row:* 6 op., 4 cl., 1 op., 1 cl., 1 op., 3 cl., 4 op., 2 cl., 7 op. *27th row:* 18 op., 3 cl., 8 op. *28th row:* 29 op. *29th row:* 29 op.

Edge: 2 s.c. on 2 ch., * (s.c. in d.c., 2 s.c. on next 2 ch.) 3 times, ch. 7, drop stitch and pick it up in s.c. over 2d d.c. at the right, 12 s.c. on 7 ch., (s.c. in d.c., 2 s.c. on 2 ch.) twice, ch. 7, drop stitch and pick it up in s.c. over 2d d.c. at the right, 6 s.c. on 7 ch., ch. 7, drop stitch and pick it up in 6th s.c. of previous loop, 12 s.c. on 7 ch., finish next loop with 6 more s.c., repeat from * for 4 more scallops and make scallop at the point in the same way except that in the second chain of 7 make 4 s.c., ch. 7, drop stitch and pick it up in the 4th s.c. back in previous loop, 12 s.c. on 7 ch., 8 s.c. on next loop, work 5 more scallops down second side of square the same as the first, and repeat on the other seven squares.



Centerpiece with Edge of Filet Crochet

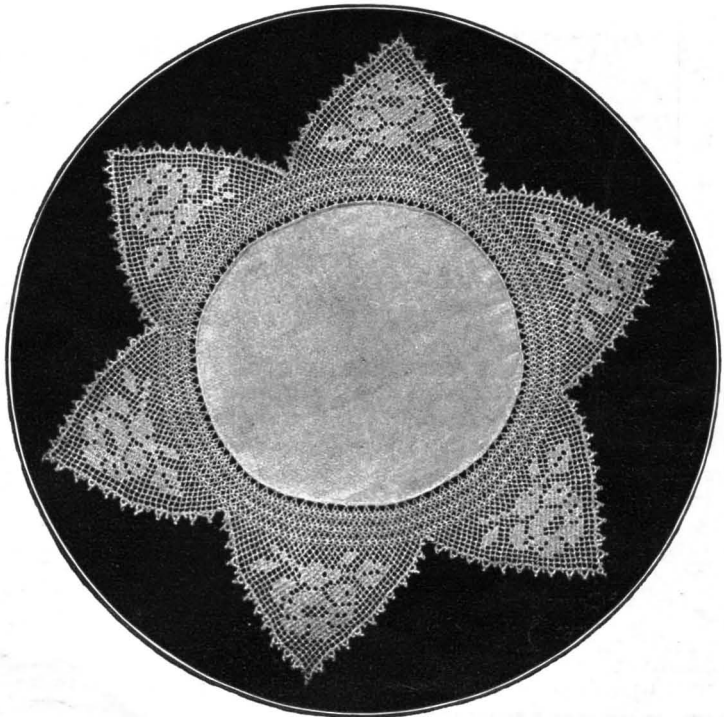
No. 447

Another attractive centerpiece has the edge worked in the single filet rose pattern combined with Mile-a-Minute crochet. For a 10-inch center of linen, crochet a length of six points. This will give a 20-inch centerpiece. Turn the edge of the linen and cover with buttonhole stitch, at the same time catching in each loop of the finished crochet.

Materials: Corticelli Mercerized Cordonnet, Art. 66, 2 balls White, Size 50; steel hook No. 12.

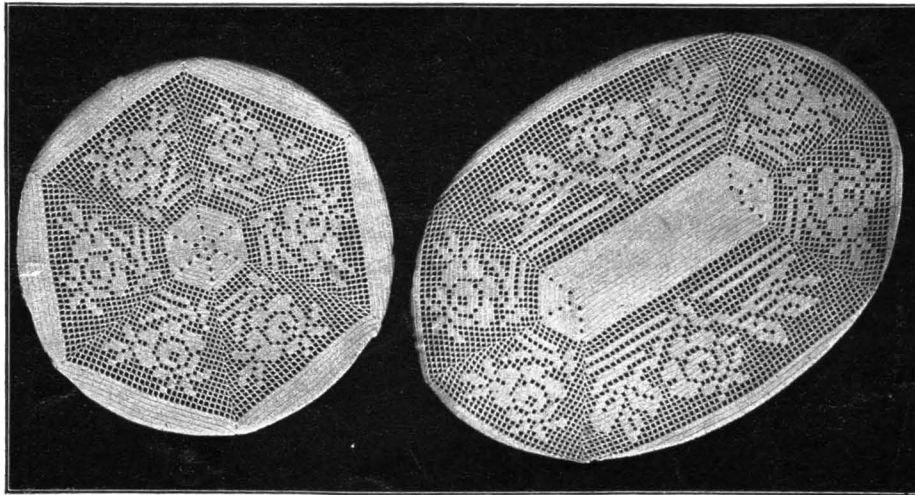
Instructions: Ch. 23, d.c. in 6th st. from hook, (ch. 2, d.c. in same st.) 3 times, * skip 5 ch., d.c. in 6th st., (ch. 2, d.c. in same st.) 3 times, repeat from * once, ch. 2, skip 4 st., d.c. in 5th st., ch. 5,

turn. *2d row:* 2 open filet meshes made with d.c. on 1st d.c. of cluster, ch. 2, * d. c. under 2 ch. in center of cluster, (ch. 2, d.c. under same ch.) 3 times, repeat from * twice, ch. 5, turn. *3d row:* * D.c. under 2 ch. in center of cluster, (ch. 2, d.c. under same ch.) 3 times, repeat from * twice, 3 open mesh, ch. 5, turn. *4th row:* 4 open mesh (the last d.c. should come in the 2 ch. in center of cluster), 3 clusters as in previous row, ch. 5, turn. *5th row:* 3 clusters, 5 op., ch. 5, turn. *6th row:* 6 op., 3 clusters, ch. 5, turn. *7th row:* 3 clusters, 7 op., ch. 5, turn. *8th row:* 8 op., 3 clusters, ch. 5, turn. *9th row:* 3 clusters, 9 op., ch. 5, turn. *10th row:* 7 op., 1 cl., 2 op., 3 clusters, ch. 5, turn. *11th row:* 3 clusters, 3 op., 1 cl., 2 op., 3 cl., 2 op., ch. 5, turn. *12th row:* 3 op., 3 cl., 2 op., 1 cl., 3 op., 3 clusters, ch. 5, turn. *13th row:* 3 clusters, 4 op., 1 cl., 1 op., 3 cl., 4 op., ch. 5, turn. *14th row:* 9 op., 1 cl., 4 op., 3 clusters, ch. 5, turn. *15th row:* 3 clusters, 5 op., 1 cl., 9 op., ch. 5, turn. *16th row:* 4 op., 3 cl., 3 op., 1 cl., 5 op., 3 clusters, ch. 5, turn. *17th row:* 3 clusters, 4 op., 3 cl., 2 op., 5 cl., 3 op., ch. 5, turn. *18th row:* 3 op., 5 cl., 1 op., 5 cl., 4 op., 3 clusters, ch. 5, turn. *19th row:* 3 clusters, 5 op., 4 cl., 4 op., 1 cl., 1 op., 1 cl., 3 op., ch. 5, turn. *20th row:* 4 op., 1 cl., 1 op., 3 cl., 1 op., 3 cl., 1 op., 1 cl., 5 op., 3 clusters, ch. 5, turn. *21st row:* 3 clusters, 1 op., 3 cl., 1 op., 5 cl., 1 op., 7 cl., 3 op., ch. 5, turn. *22d row:* 2 op., 1 cl., 1 op., 7 cl., 3 op., 2 cl., 2 op., 1 op., 3 clusters, ch. 5, turn. *23d row:* 3 clusters, 6 op., 1 cl., 2 op., 2 cl., 1 op., 3 cl., 2 op., 1 cl., 1 op., 2 cl., 2 op., ch. 5, turn. *24th row:* 2 op., 4 cl., 3 op., 2 cl., 1 op., 3 cl., 2 op., 1 cl., 6 op., 3 clusters, ch. 5, turn. *25th row:* 3 clusters, 3 op., 4 cl., 2 op., 4 cl., 1 op., 1 cl., 3 op., 4 cl., 3 op., ch. 5, turn. *26th row:* 3 op., 2 cl., 1 op., 2 cl., 2 op., 1 cl., 1 op., 2 cl., 1 op., 1 cl., 2 op., 1 cl., 1 op., 2 cl., 4 op., 3 clusters, ch. 5, turn. *27th row:* 3 clusters, 4 op., 2 cl., 1 op., 2 cl., 2 op., 3 cl., 1 op., 7 cl., 5 op., ch. 5, turn. *28th row:* 4 op., 4 cl., 1 op., 1 cl., 1 op., 2 cl., 1 op., 1 cl., 3 op., 3 cl., 1 op., 1 cl., 5 op., 3 clusters, ch. 5, turn. *29th row:* 3 clusters, 5 op., 4 cl., 6 op., 2 cl., 1 op., 2 cl., 1 op., 3 cl., 5 op., ch. 5, turn. *30th row:* 6 op., 3 cl., 1 op., 3 cl., 17 op., 3 clusters, ch. 5, turn. *31st row:* 3 clusters, 31 op., ch. 5, turn. *32d row:* 32 op., 3 clusters, ch. 5, turn. This finishes one point. Repeat from beginning.



Centerpiece No. 447

Edge: * S.c. in d.c., picot, 2 s.c. on 2 ch., s.c. in d.c., ch. 5, turn; join on the right to 4th st., 4 s.c. on 5 ch., picot, 4 s.c., 4 s.c. on same ch., 2 s.c. on 2 ch.; repeat from *. Join the crochet to linen center with buttonhole stitch, catching in each loop of the crochet.



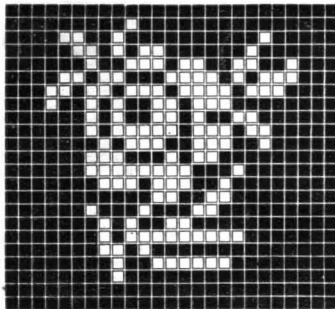
Covers for Asbestos Mats No. 448

Filet Crochet Covers for Round and Oval Asbestos Mats No. 448

When accumulating a new or replenishing an old supply of table linen, do not overlook some attractive covers for the useful asbestos mats. The two covers illustrated are of the same design, in the pretty rose pattern which seems especially suited to the decoration of table linen. The oval cover is designed for a mat 14 by 10 inches and the round cover for a mat 10 inches in diameter, but as the pattern is worked quite close to the center of the piece, the same design may be used for two or three different sizes of mats.

Materials: Corticelli Mercerized Gordonet, Art. 66, Size 30; for the round cover 2 balls and for the oval cover 3 balls; steel hook No. 12.

Round Cover No. 448a: Begin at center. Ch. 6, join in ring, 18 d.c. in ring. (Each row is joined at end and each new row begins with 3 ch. to count as the first d.c.) *2d row:* D.c. in first 3 st., taking up both threads, * ch. 2, d.c. in each of next 3 st.; repeat from * all around. There should be 6 clusters and 6 holes in round. *3d row:* D.c. in each d.c., 6 d.c. in each hole. *4th row:* D.c. in each d.c., 2 ch. at each point. *5th to 8th row inclusive:* Repeat the 3d and 4th rows alternately. *9th and 10th rows:*



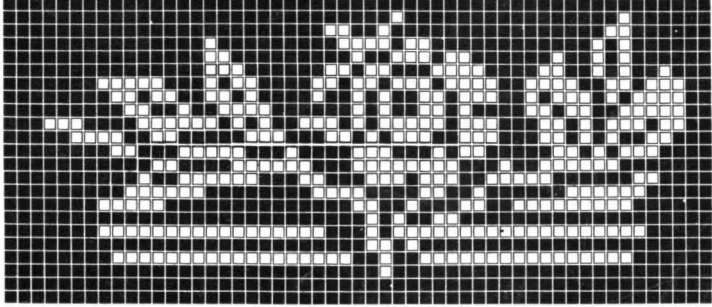
Detail for Round Cover No. 448a

All open mesh, making 1 d.c. in every 3d st., 2 ch. between, and at each point increasing 1 mesh. *11th to 30th row inclusive:* Beginning with the 11th row work the rose pattern from the black and white Detail of Pattern No. 448a, always increasing one mesh at each point in each row. *31st row:* All open mesh, increasing as before. Now work 7 rows (or as many as are required to fit the mat) of d.c., increasing or not at the points as required. Finish with a row of open mesh, without increasing, to go over the back of the mat, and fasten off. **Draw Cord:** Using two strands of the thread make a chain, and without breaking thread run this cord through the last row of open mesh, allow sufficient length to tie in a bow and finish each end of the cord with 3 loops of 10 chain each.

Oval Cover No. 448b: Ch. 95, turn, skip 2 ch., 3 d.c. in next, 1 d.c. in each chain to end, 3 d.c. in end chain, turn, and work down other side of chain in same way, making 3 d.c. in the chain at each end, 1 d.c. in each of the others. When the round is finished the length should be about 5 inches. Join at end. *2d row:* Ch. 5, 1 d.c. in each first 3 st., taking up both threads, ch. 2, 1 d.c. in each 3 st. at end, ch. 2, 1 d.c. in each next 3 end st., ch. 2, 1 d.c. in each st. down side, ch. 2, 1 d.c. in each 3 end st., join to starting chain. *3d row:* Ch. 3, 6 d.c. in each hole of preceding row and 1 d.c. in each d.c. Always join at the end of the row and start each new row with a ch. of 3. *4th row:* 1 d.c. in each st., making a hole of 2 ch. over each hole of second round. *5th to 8th row inclusive:* Work like 3d and 4th rows alternately. *9th and 10th rows:* These two rows are entirely in open filet mesh, with



d.c. in every third st. and 2 ch. between, and at the points increase one hole in each round. *11th to 30th row inclusive:* Beginning with the 11th row work the rose pattern from the black and white Detail of



Detail of Oval Cover No. 448b

Pattern No. 448b or from the illustration, on each row increasing one hole at each point. *31st row:* Work entirely in open filet mesh. Now work three rows of plain d.c., or as many rows as are necessary to make the cover the required size, increasing or not at the points as necessary.

When the piece is large enough finish with two rows of open filet mesh, without increasing, to go over the back of mat. Fasten off.

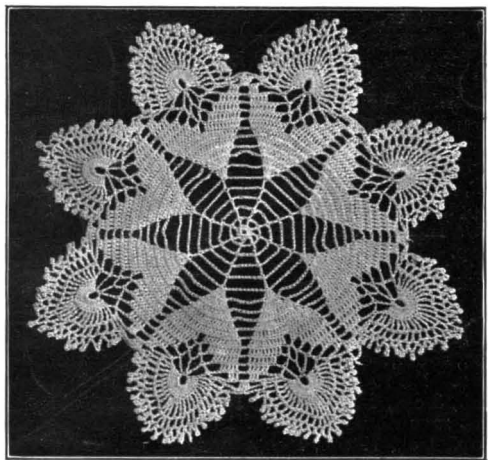
Make a draw cord to run through the last row of filet mesh the same as for the Round Cover No. 448a.

Ornamental Doily with Open Star Center No. 449

Many an unsightly scratch to the furniture is saved by use of the odd doily and it is a good doily to have several of these pretty pieces, of different sizes, to draw upon when needed. The doily illustrated is crocheted in a very ornamental pattern, with open star center, and measures about 10 inches in diameter from point to point.

Materials: Corticelli Mercerized Gondonnet, Art. 66, 2 balls White, Size 30; steel hook No. 12.

Instructions: Make a ch. of 5 st., join in ring, fill ring with 24 s.c. *2d row:* Ch. 6, * miss 2 d.c in next, ch. 3, repeat from * 6 times, joining the third of 6 ch. *3d row:* Ch. 8, * d.c. in next d.c., ch. 6, repeat from * 6 times, join to third of 8 ch. *4th row:* Ch. 11, * d.c. in next d.c., ch. 8, repeat from * 6 times, join to third of 11 ch. *5th row:* Ch. 13, * d.c. in d.c., ch. 10, repeat from * 6 times, join to third of 13 ch. *6th row:* Ch. 15, * d.c. in d.c., ch. 12, repeat from * 6 times, join to third of 15 ch. *7th row:* Ch. 3, d.c. in same place, * ch. 12, 4 d.c. over next d.c., repeat from * 6 times, joining last 12 ch. to top of 3 ch. at beginning. *8th row:* * 2 d.c. in each of 4 d.c., (ch. 3 for first d.c. at beginning of each row), ch. 10, repeat from * 7 times, join to top of 3 ch. *9th row:* * 2 d.c. in each of first 2 d.c., 1 d.c. in each of 4 d.c., 2 d.c. in each of last 2 d.c., ch. 8, repeat from * 7 times, joining to top of 3 ch. *10th row:* * 2 d.c. in each of first 2 d.c., 1 d.c. in each of 8 d.c., 2 d.c. in each of last 2 d.c., ch. 6, repeat from *, joining to top of 3 ch. *11th row:* * 2 d.c. in each of first 2 d.c., 1 d.c. in each of 12 d.c., 2 d.c. in each of last 2 d.c., ch. 4, repeat from *, joining to top of 3 ch. *12th row:* * 2 d.c. in each of first 2 d.c., 7 d.c. in next 7 d.c., ch. 2, miss 2 d.c., 7 d.c. in next 7 d.c., 2 d.c. in each of next 2 d.c., ch. 3, repeat from *, join to top of 3 ch. *13th row:* * Ch. 3, 1 d.c. in each of 8 d.c., ch. 2, 2 d.c. separated by 5 ch. in 2 ch. of last row, ch. 2, miss 2 d.c., 9 d.c. in 9 d.c., ch. 3, repeat from *, join to first 3 ch. *14th row:* * 7 d.c. over first 7 d.c., miss 2 d.c., ch. 3, d.c. over next d.c., ch. 4, t.c. over 5 ch., ch. 8, sl. st. in first for ring, ch. 4, d.c. over d.c., ch. 3, miss 1 d.c., 7 d.c. over next 7 d.c., repeat. *15th row:* 5 d.c. over 7 d.c., ch. 3, d.c. over d.c., ch. 2, 20 d.c. over 8 ch. ring, ch. 2, d.c. over d.c., ch. 3, miss 2 d.c., 5 d.c. over next 5 d.c., repeat. *16th row:* 3 d.c. over 5 d.c., ch. 4, d.c. over d.c., t.c. over each of 9 d.c. with 1 ch. between, d.t.c. over tenth d.c., ch. 1, 2 d.t.c. with 1 ch. between over next d.c., ch. 1, t.c. over each of next 9 d.c. with 1 ch. between, d.c. over d.c., ch. 4, miss 2 d.c., 3 d.c. over next 3 d.c., repeat. *17th row:* Ch. 6, miss 3 d.c., d.c. in next d.c., ch. 2, d.c. in space between first 2 t.c., (ch. 2, d.c. in next space) 9 times, ch. 2, 2 d.c. with 2 ch. between in next space, (2 ch., d.c. in next space) 11 times, ch. 4, 4 d.c. over 3 ch., repeat. *18th row:* (Ch. 6, sl. st. in third for p., ch. 2, d.c. in next space) 21 times, ch. 4, sl. st. between second and third of 4 d.c., repeat.



Ornamental Doily No. 449

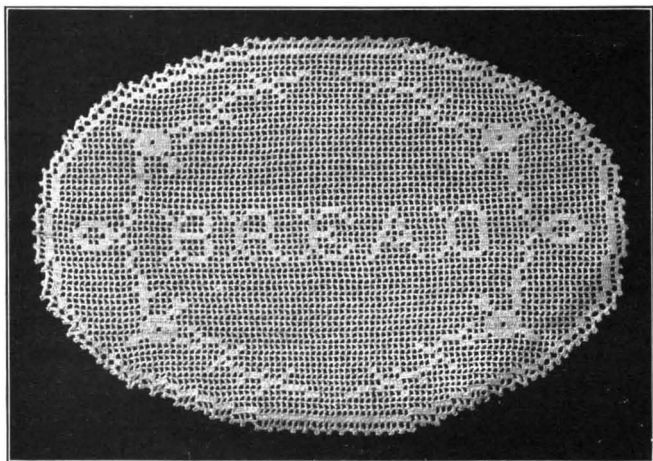


Bread Doily in Filet Crochet No. 450

This attractive bread doily measures 13 inches long by 9 inches wide. The irregular edge involves the principles of widening and narrowing with open filet meshes at the ends of the rows, instructions for which are given on page 3. The pattern is simple and may easily be followed from the illustration.

Materials: Corticelli Mercerized Gordonnnet, Art. 92, 1 ball White, Size 40; steel hook No. 10.

Instructions: Ch. 81 for foundation, 25 open meshes. *2d row:* Increase 4 op., 25 cl., increase 4 op. *3d row:* Increase 3 op., 4 cl., 25 op., 4 cl., increase 3 op. *4th row:* Increase 3 op. 3 cl., 33 op., 3 cl., increase 3 op. *5th row:* Increase 3 op., 3 cl., 39 op., 3 cl., increase 3 op. *6th row:* Increase 2 op., 3 cl., 10 op., 1 cl., 7 op., 2 cl., 5 op., 2 cl., 7 op., 1 cl., 10 op., 3 cl., increase 2 op. *7th row:* Increase 2 op., 2 cl., 14 op., 1 cl., 2 op., 4 cl., 9 op., 4 cl., 2 op., 1 cl., 14 op., 2 cl., increase 2 op. *8th row:* Increase 2 op., 2 cl., 15 op., 3 cl., 3 op., 1 cl., 15 op., 1 cl., 3 op., 3 cl., 15 op., 2 cl., increase 2 op. *9th row:* Increase 1 op., 2 cl., 11 op., 1 cl., 3 op., 2 cl., 3 op., 1 cl., 3 op., 1 cl., 13 op., 1 cl., 3 op., 1 cl., 3 op., 2 cl., 3 op., 1 cl., 11 op., 2 cl., increase 1 op. *10th row:* Increase 1 op., 1 cl., 14 op., 1 cl., 1 op., 1 cl., 33 op., 1 cl., 1 op., 1 cl., 14 op., 1 cl., increase 1 op. *11th row:* Increase 1 op., 1 cl., 16 op., 1 cl., 35 op., 1 cl., 16 op., 1 cl., increase 1 op. *12th row:* Increase 1 op., 1 cl., 18 op., 2 cl., 31 op., 2 cl., 18 op., 1 cl., increase 1 op. *13th row:* Increase 1 op., 1 cl., 13 op., 2 cl., 3 op., 1 cl., 29 op., 1 cl., 2 op., 1 cl., 3 op., 2 cl., 13 op., 1 cl., increase 1 op. *14th row:* Increase 1 op., 1 cl., 4 op., 2 cl., 2 op., 3 cl., 1 op., 2 cl., 2 op., 3 cl., 37 op., 3 cl., 2 op., 2 cl., 1 op., 3 cl., 2 op., 2 cl., 4 op., 1 cl., increase 1 op. *15th row:* Increase 1 op., 1 cl., 6 op., 7 cl., 3 op., 1 cl., 43 op., 1 cl., 3 op., 7 cl., 6 op., 1 cl., increase 1 op. *16th row:* Increase 1 op., 1 cl., 9 op., 2 cl., 1 op., 2 cl., 2 op., 1 cl., 45 op., 1 cl., 2 op., 2 cl., 1 op., 2 cl., 9 op., 1 cl., increase 1 op. *17th row:* 1 op., 1 cl., 9 op., 5 cl., 51 op., 5 cl., 9 op., 1 cl., 1 op. *18th row:* Increase 1 op., 1 cl., 11 op., 3 cl., 53 op., 3 cl., 11 op., 1 cl., increase 1 op. *19th row:* Increase 1 op., 1 cl., 11 op., 1 cl., 3 op., 2 cl., 49 op., 2 cl., 3 op., 1 cl., 11 op., 1 cl., increase 1 op. *20th row:* Increase 1 op., 1 cl., 12 op., 1 cl., 4 op., 2 cl., 47 op., 2 cl., 4 op., 1 cl., 12 op., 1 cl., increase 1 op. *21st row:* 1 op., 1 cl., 12 op., 1 cl., 4 op., 1 cl., 49 op., 1 cl., 4 op., 1 cl., 12 op., 1 cl., 1 op. The remainder of the design may easily be worked by following pattern in illustration. Finish the edge with 2 s.c., picot. 2 s.c., in each open mesh.



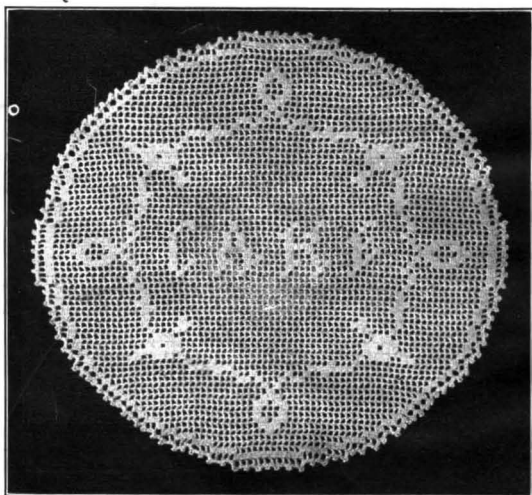
Bread Doily in Filet Crochet No. 450

Cake Doily in Filet Crochet No. 450a

The round cake doily measures 11 inches in diameter, and is rounded by increasing and decreasing the open filet meshes at the ends of the rows, instructions for which are given on page 3.

Materials: Corticelli Mercerized Gordonnnet, Art. 92, 1 ball White, Size 40.

Instructions: Ch. 39 for foundation, work 11 open meshes. *2d row:* Increase 4 op., 11 cl., increase 4 op. *3d row:* Increase 3 op., 4 cl., 11 op., 4 cl., increase 3 op. *4th row:* Increase 3 op., 3 cl., 19 op., 3 cl., increase 3 op. *5th row:* Increase 2 op., 3 cl., 25 op., 3 cl., increase 2 op. *6th row:* Increase 1 op., 2 cl., 15 op., 1 cl., 15 op., 2 cl., increase 1 op. *7th row:* Increase 2 op., 1 cl., 16 op., 3 cl., 16 op., 1 cl., increase 2 op. *8th row:* Increase 1 op., 2 cl., 16 op., 2 cl., 1 op., 2 cl., 16 op., 2 cl., increase 1 op. *9th row:* Increase 1 op., 1 cl., 18 op., 1 cl., 3 op., 1 cl., 18 op., 1 cl., increase 1 op. *10th row:* Increase 1 op., 1 cl., 19 op., 1 cl., 3 op., 1 cl., 19 op., 1 cl., increase 1 op. *11th row:* Increase 1 op., 1 cl., 20 op., 2 cl., 1 op., 2 cl., 20 op., 1 cl., increase 1 op. *12th row:* In-



Cake Doily in Filet Crochet No. 450a



crease 1 op., 1 cl., 22 op., 3 cl., 22 op., 1 cl., increase 1 op. *13th row:* Increase 1 op., 1 cl., 24 op., 1 cl., 24 op., 1 cl., increase 1 op. *14th row:* Increase 1 op., 1 cl., 24 op., 1 cl., 1 op., 1 cl., 24 op., 1 cl., increase 1 op. *15th row:* Increase 1 op., 1 cl., 21 op., 2 cl., 1 op., 1 cl., 3 op., 1 cl., 1 op., 2 cl., 21 op., 1 cl., increase 1 op. *16th row:* Increase 1 op., 1 cl., 18 op., 1 cl., 2 op., 1 cl., 2 op., 1 cl., 5 op., 1 cl., 2 op., 1 cl., 2 op., 1 cl., 18 op., 1 cl., increase 1 op. *17th row:* Increase 1 op., 1 cl., 15 op., 7 cl., 13 op., 7 cl., 15 op., 1 cl., 1 op. *18th row:* Increase 1 op., 1 cl., 15 op., 1 cl., 3 op., 1 cl., 19 op., 1 cl., 3 op., 1 cl., 15 op., 1 cl., increase 1 op. *19th row:* 1 op., 1 cl., 6 op., 2 cl., 2 op., 3 cl., 1 op., 1 cl., 29 op., 1 cl., 1 op., 3 cl., 2 op., 2 cl., 6 op., 1 cl., 1 op. *20th row:* Increase 1 op., 1 cl., 8 op., 7 cl., 31 op., 7 cl., 8 op., 1 cl., increase 1 op. *21st row:* Increase 1 op., 1 cl., 11 op., 2 cl., 1 op., 2 cl., 31 op., 2 cl., 1 op., 2 cl., 11 op., 1 cl., increase 1 op. *22d row:* 1 op., 1 cl., 11 op., 5 cl., 31 op., 5 cl., 11 op., 1 cl., 1 op. *23d row:* Increase 1 op., 1 cl., 13 op., 3 cl., 33 op., 3 cl., 13 op., 1 cl., increase 1 op. *24th row:* 1 op., 1 cl., 12 op., 1 cl., 3 op., 2 cl., 29 op., 2 cl., 3 op., 1 cl., 12 op., 1 cl., 1 op. *25th row:* 1 op., 1 cl., 11 op., 1 cl., 5 op., 2 cl., 27 op., 2 cl., 5 op., 1 cl., 11 op., 1 cl., 1 op. *26th row:* Increase 1 op., 1 cl., 12 op., 1 cl., 5 op., 1 cl., 29 op., 1 cl., 5 op., 1 cl., 12 op., 1 cl., increase 1 op. The remainder of the design may easily be worked by following pattern in illustration. Finish the edge with 2 s.c., picot, 2 s.c., in each open mesh.

Two Crocheted Insertions No. 451

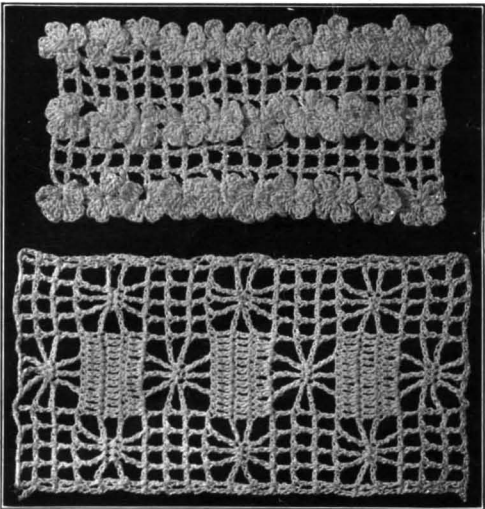
No. 451a, the upper design in the illustration, is an unusual and very dainty insertion, suitable for trimming collar and cuff sets, linen waists, children's dresses, or for towels, bedroom linen or underwear. A band of the insertion joining the waist and skirt of a child's dress is very effective. The pattern consists of tiny four-leaf-clover motifs that rise above the open filet meshes of the background with an effect similar to Irish crochet. The insertion, worked with size 50 cotton, will measure a little over 1½ inches wide.

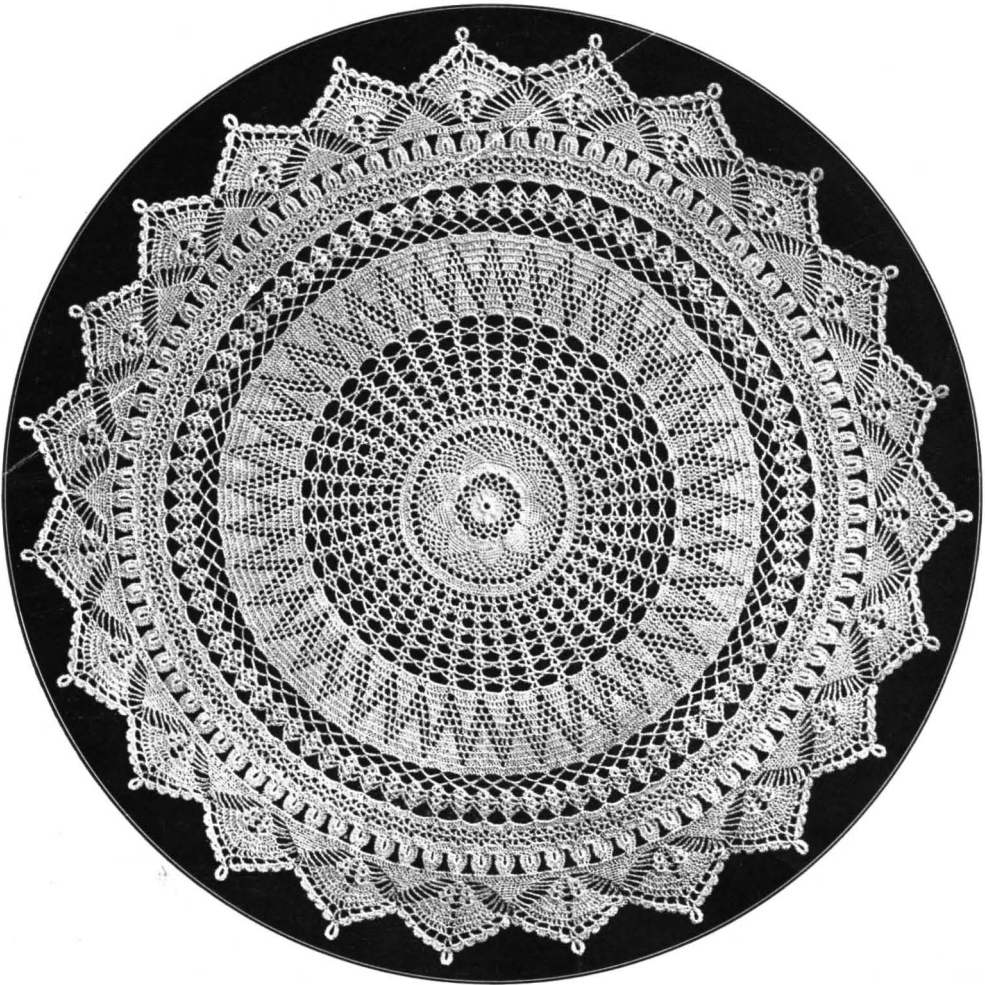
No. 451b will measure about 2 inches wide when worked with size 50 cotton. This design is suitable for towels or bedroom linen, and is worked in filet crochet and crochet squares in imitation of drawnwork.

Materials: Corticelli Mercerized Cordonnet, White, Size 50; steel hook No. 12.

Insertion No. 451a: Ch. 27. *1st row:* Make clover leaf as follows: Ch. 4, d.c. in first st. of ch. 4, d.c. in same st., ch. 3, join with sl.st. into same st. This makes first petal. Make three more petals, using same center. The petals may need pulling into shape. Ch. 2, d.c. in fifth st. before clover motif, (make one open mesh), 3 more open filet meshes, clover, 4 op., clover. *2d row:* 8 op. *3d row:* Ch. 2, clover, and work same as 1st row, working 4 op., clover, 4 op., clover, turn. Work every other row in open filet mesh, to bring the clover motifs on one side.

Insertion No. 451b: Ch. 41. *1st row:* D.c. into fourth st. from hook, 4 op., ch. 4, t.c. in third st. of foundation ch., skip 2 st., t.c. in third st., skip 2 st., t.c. in 3d st., ch. 4, 4 op., d.c. in last st. of foundation, ch. 3, turn. *2d row:* D.c. in d.c. of last op., 4 op., ch. 4, s.c. into each t.c. of previous row, ch. 4, 4 op., d.c. over d.c., ch. 3, turn. *3d row:* D.c. into last op., 4 op., ch. 2, t.c. into previous row directly opposite first t.c. of 1st row, ch. 2, t.c. directly opposite second t.c. of 1st row, ch. 2, t.c. directly opposite third t.c. of 1st row, ch. 2, 4 op., d.c., ch. 3, turn. *4th row:* D.c., * ch. 4, t.c. into next d.c., t.c. into next d.c., t.c. into next d.c., * ch. 4, d.c. into d.c., 12 more d.c. (this will make 4 closed meshes), repeat between stars, 2 d.c., ch. 3, turn. *5th row:* D.c., ch. 4, 3 s.c. as before, ch. 4, 13 d.c., ch. 4, 3 s.c., ch. 4, 2 d.c., ch. 3, turn. *6th row:* D.c., * ch. 2, t.c. opposite former t.c., ch. 2, 2 t.c., ch. 2, t.c., ch. 2 *, 13 d.c., repeat between stars, 2 d.c., ch. 3, turn and repeat from 1st row.





Between Meal Centerpiece No. 452

Between Meal Centerpiece No. 452

As its name implies, this handsome centerpiece is intended to decorate the dining table between meals. It measures about 37 inches in diameter. To work so large and elaborate a design seems, at first thought, quite a formidable undertaking, but with "Princess" Pearl Crochet Cotton the work progresses rapidly and the piece will be finished much sooner than anticipated.

Materials: "Princess" Pearl Crochet Cotton, Art. 455, Size 5, 5 balls Tan No. 357 or Linen No. 355; if desired Corticelli Mercerized Gordonnnet, Size 3, may be used; steel hook No. 3.

Instructions: Ch. 10, join. *1st row:* 36 d.t. in ring. (Join at end of each round; this will not be repeated.) *2d row:* Ch. 4, skip 2, 1 s.c. in next, (ch. 4, skip 2, 1 s.c.) repeat. *3d row:* Sl.st. to center of ch., (ch. 5, s.c. in center of next ch.) repeat. *4th row:* Same as 3d row. *5th row:* 6 t.c. in first 5 ch., 5 t.c. in next; repeat. *6th row:* 11 s.c. in 11 t.c., ch. 3; repeat. *7th row:* 9 s.c. in 11 s.c., missing first and last, ch. 3, s.c. in center of ch., ch. 3, 9 s.c.; repeat. *8th row:* * 7 s.c. in 9 s.c., (ch. 3, 1 s.c. in ch.) twice; repeat from *. *9th row:* * 5 s.c. in 7 s.c., (ch. 3, 1 s.c. in ch.) 4 times; repeat from *. *10th row:* * 3 s.c. in 5 s.c., (ch. 3, 1 s.c. in ch.) 5 times; repeat from *. *11th row:* * 1 s.c. in 3 s.c., (ch. 3, 1 s.c. in ch.) 6 times; repeat from *. *12th row:* Sl.st. to center of ch., ch. 3, 1 s.c. in next ch., * ch. 3, 1 d.c. in next; repeat from *. *13th row:* Sl.st. to center of ch., ch. 5, 1 d.c. in next ch., * ch. 3, 1 d.c. in next; repeat from *. *14th row:* Ch. 3, 2 d.c. under first ch., * 3 d.c. in next; repeat from *. *15th row:* 1 s.c. in each st. *16th row:* Ch. 5, skip 1, 1 d.c. in next, * ch. 2, skip 1, 1 d.c. in next; repeat from *. *17th row:* Ch. 5, 1 d.c. in same st., * ch. 3, skip 5, 1 d.c. in next, ch. 2, 1 d.c. in same; repeat from *. *18th row:* Sl.st. to center of 2 ch., ch. 5, 1 d.c. in same, * ch. 3, fasten under 3 ch., ch. 3, 1 d.c. under next 2 ch., ch. 2, 1 d.c. in same; repeat from *. *19th row:* Sl.st. to center of 2 ch., ch. 5, 1 d.c. in same, * ch. 4, 2 d.c. with 2 ch. between under next 2 ch.; repeat from *. *20th row:* Like 18th row. *21st row:* Like 19th row. *22d row:* Like 18th row. *23d row:* Like 19th row, except ch. 5 instead of ch. 4. *24th*



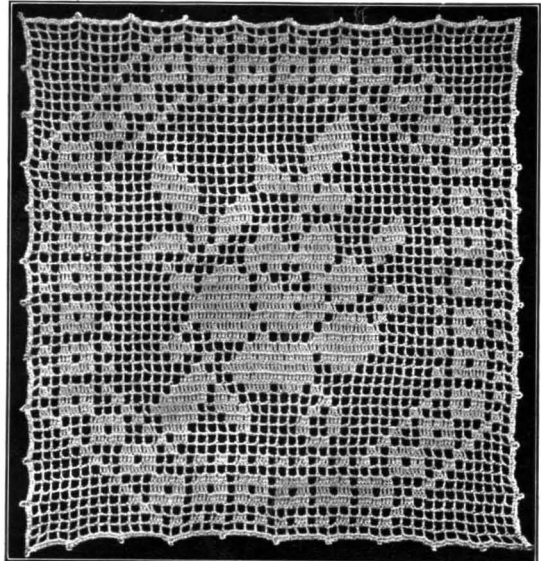
row: Like 18th row. *25th row:* Like 23d row. *26th row:* Like 18th row. *27th row:* Like 23d row, except ch. 6 instead of ch. 5. *28th row:* Sl.st. to center of 2 ch., ch. 3, * 7 d.c. and 6 ch., 1 d.c. under 2 ch.; repeat from *. *29th row:* Sl.st. to second of 7 d.c., ch. 3, 1 d.c. in next 5 st., * ch. 2, 6 d.c. in 7 d.c., missing first; repeat from *. *30th row:* All rows commence with 3 ch., forming first d.c., and will not be repeated, 5 d.c. over 6 d.c., missing first, ch. 2, d.c. in space, ch. 2; repeat. *31st row:* * 4 d.c. over 5 d.c., (ch. 2, 1 d.c. in space) twice, ch. 2; repeat from *. *32d row:* * 3 d.c., (ch. 2, 1 d.c. in space) 3 times, ch. 2; repeat from *. *33d row:* * 2 d.c., (ch. 2, 1 d.c. in space) twice, 1 d.c. on d.c., 1 d.c. in space, ch. 2, d.c. in next space, ch. 2; repeat from *. *34th row:* * 1 d.c., (ch. 2, 1 d.c. in space) twice, 1 d.c. in each of next 3 d.c. and 1 d.c. in space, ch. 2, 1 d.c. in space, ch. 2; repeat from *. *35th row:* Make 7 d.c. over 5 d.c. and in space each side with 3 spaces between each group of d.c. *36th row:* 9 d.c. over 7 d.c. and spaces each side with 2 spaces between groups. *37th row:* 11 d.c. over 9 d.c. with 1 space between. *38th row:* 1 d.c. in each st. around. *39th row:* Ch. 8, 1 s.c. in center of d.c. group, ch. 8, 1 s.c. between d.c. group; repeat. *40th row:* Sl.st. to center of ch., * ch. 9, 1 s.c. in next loop; repeat from *. *41st row:* Sl.st. to center of ch., ch. 3, 1 d.c. in same st., ch. 2, 2 d.c. in same, * ch. 3, 2 d.c., 2 ch., 2 d.c. in center of next ch.; repeat from *. *42d row:* Sl.st. to center of 2 ch., ch. 5, 1 d.c. in same, * ch. 2, 1 s.c. under 3 ch., ch. 2, (1 d.c., ch. 2, 1 d.c.) under next ch.; repeat from *. *43d row:* Shell in shell, ch. 3, 1 s.c. in s.c., ch. 3; repeat. *44th row:* Sl.st. to center of shell, * ch. 8, 1 s.c. in next shell; repeat from *. *45th row:* 1 d.c. in each st. *46th row:* 2 d.c. separated by 2 ch. in d.c., skip 3; repeat. *47th row:* 2 d.c. separated by 3 ch. under each 2 ch.; repeat. *48th row:* 2 d.c. in first 3 ch., 1 d.c. in each of next 2 d.c., 1 d.c. in next 3 ch., (ch. 8, fasten in top of last d.c. to form a ring, 1 d.c. in same 3 ch., 1 d.c. in next 2 d.c., 2 d.c. in next 3 ch., 1 d.c. in next 2 d.c., 1 d.c. in 3 ch.); repeat. *49th row:* 15 d.c. in 8 ch. loop, skip 2 d.c., 1 s.c. in each of next 4; repeat. *50th row:* Sl. st. to seventh st. of loop, * 1 s.c. in seventh, eighth and ninth d.c., ch. 4; repeat from *. *51st row:* D.c. in each st. *52d row:* 15 s.c. in 15 d.c., ch. 6, skip 6, 2 d.c. in next, ch. 2, 2 d.c. in same, ch. 6, skip 6; repeat. *53d row:* 13 s.c. over 15 s.c. skipping first and last, ch. 6, shell of 2 d.c., ch. 2, 2 d.c. in first d.c. of shell of last row, ch. 1, shell in last d.c. of shell, ch. 6; repeat. *54th row:* 11 s.c. over 13 s.c., ch. 6, shell of 3 d.c., 2 ch., 3 d.c. in shell, ch. 2, shell in next shell, ch. 6; repeat. *55th row:* 9 s.c. over 11 s.c., ch. 6, 8 d.c. in shell, ch. 1, 8 d.c. in next shell, ch. 6; repeat. *56th row:* 7 s.c., ch. 6, 1 d.c. in each of 8 d.c., 1 d.c. under ch., ch. 2, 1 d.c. under same ch., 1 d.c. in each 8 d.c., ch. 6; repeat. *57th row:* 5 s.c., ch. 6, 9 d.c. in next 9 st., 1 d.c. under ch., ch. 2, 1 d.c. under same ch., 9 d.c. in next 9 st., ch. 6; repeat. *58th row:* 3 s.c., ch. 6, 10 d.c. with 1 ch. between each, ch. 2, 10 d.c. with 1 ch. between each, ch. 6; repeat. *59th row:* * 1 s.c., ch. 6, 1 d.c. in first d.c., (ch. 3, skip 1 d.c., 1 d.c. in next) 4 times, ch. 3, 1 d.c. under 2 ch., ch. 3, 1 d.c. under same, (ch. 3, skip 1 d.c., 1 d.c. in next) 5 times, ch. 6; repeat from *. *60th row:* 1 s.c., 4 d.c., 1 s.c. in each 3 ch. to center, 2 s.c. in center ch., ch. 8, drop st., insert hook in last s.c. just made, draw st. through, forming a ring, 13 s.c. in ring, 1 s.c. in center ch., 1 s.c., 4 d.c., 1 s.c. in each 3 ch.; repeat.

Filet Crochet Rose Doily No. 453

A square doily, worked entirely in filet crochet, has a single rose for the center, with an effective border, and the edge finished with single crochet and picots. The doily measures about 8½ inches wide and 9 inches long when worked with size 50 cordonnet. The same design may be effectively used to decorate a bedspread, either as corner inserts or the pattern repeated for a wide band insertion.

Materials: Gorticelli Mercerized Cordonnet, Art. 66, White, Size 50; steel hook No. 12.

Instructions: As the detail of the pattern shows very plainly, most people will prefer to work direct from the illustration and instructions for the first few rows are all that are required. *1st row:* 47 op. *2d row:* 12 op., 1 cl., 1 op., 1 op., 1 op., 1 cl., 1 op., 1 cl., 1 op., 1 cl., 1 op., 1 cl., 1 op., 1 cl., 1 op., 1 cl., 1 op., 1 cl., 1 op., 1 cl., 1 op., 1 cl., 1 op., 1 cl., 12 op. *3d row:* 11 op., 1 cl., 23 op., 1 cl., 11 op. *4th row:* 10 op., 1 cl., 1 op., 3 cl., 1 op., 3 cl., 1 op., 3 cl., 1 op., 3 cl., 1 op., 3 cl., 1 op., 3 cl., 1 op., 3 cl., 1 op., 3 cl., 1 op., 3 cl., 1 op., 3 cl., 1 op., 3 cl., 10 op. *5th row:* 9 op., 1 cl., 2 op., 1 cl., 1 op., 1 cl., 1 op., 1 cl., 1 op., 1 cl., 1 op., 1 cl., 1 op., 1 cl., 1 op., 1 cl., 1 op., 1 cl., 1 op., 1 cl., 1 op., 1 cl., 1 op., 1 cl., 1 op., 1 cl., 1 op., 1 cl., 9 op. *6th row:* 8 op., 1 cl., 3 op., 3 cl., 1 op., 3 cl., 1 op., 3 cl., 1 op., 3 cl., 1 op., 3 cl., 1 op., 3 cl., 1 op., 3 cl., 1 op., 3 cl., 1 op., 3 cl., 1 op., 3 cl., 7 op. *7th row:* 7 op., 1 cl., 1 op., 3 cl., 23 op., 3 cl., 1 op., 1 cl., 7 op. *8th row:* 6 op., 1 cl., 2 op., 1 cl., 1 op., 1 cl., 1 op., 1 cl., 1 op., 1 cl., 1 op., 1 cl., 1 op., 1 cl., 1 op., 1 cl., 2 op., 1 cl., 1 op., 1 cl., 2 op., 1 cl., 6 op. *9th row:* 5 op., 1 cl., 3 op., 3 cl., 1 op., 1 cl., 19 op., 1 cl., 1 op., 3 cl., 3 op., 1 cl., 5 op. *10th row:* 4 op., 1 cl., 1 op., 3 cl., 3 op., 1 cl., 17 op., 1 cl., 3 op., 1 cl., 3 op., 3 cl., 1 op., 1 cl., 4 op. Follow pattern in illustration.

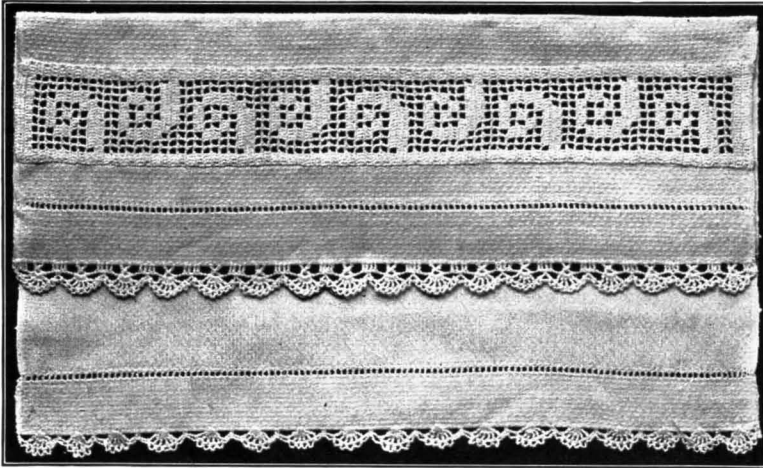


Filet Crochet Rose Doily No. 453



Towel with Filet Crochet Insertion and Crochet Edges No. 454

The simple conventional design in this insertion is distinctive and the effect is very good. The insertion measures about $1\frac{3}{4}$ inches wide when worked with size 40 cordonnet. An edge for each end of the towel is crocheted in shell pattern; for the insertion end, the edge is about $\frac{1}{2}$ inch wide and for the opposite end, about $\frac{3}{8}$ inch wide.



Towel with Filet Crochet Insertion and Crochet Edges No. 454

Materials: Corticelli Mercerized Cordonnet, Art. 66, Size 40, 1 ball White; steel hook No. 10.

Insertion: Ch. 36. Beginning in fourth stitch from hook, d.c. in each stitch of the chain, ch. 3, turn. *2d row:* D.c. in each d.c., ch. 3, turn. *3d row:* * 1 cl., 9 op., 1 cl., ch. 3, turn. *4th row:* Same as 3d row. *5th row:* 1 cl., 3 op., 3 cl., 3 op., 1 cl. *6th row:* 1 cl., 2 op., 1 cl., 3 op., 1 cl., 2 op., 1 cl. *7th row:* 1 cl., 2 op., 1 cl., 1 op., 1 cl., 1 op., 1 cl., 2 op., 1 cl. *8th row:* 1 cl., 3 op., 1 cl., 2 op., 1 cl., 2 op., 1 cl. *9th row:* 1 cl., 5 op., 2 cl., 2 op., 1 cl.

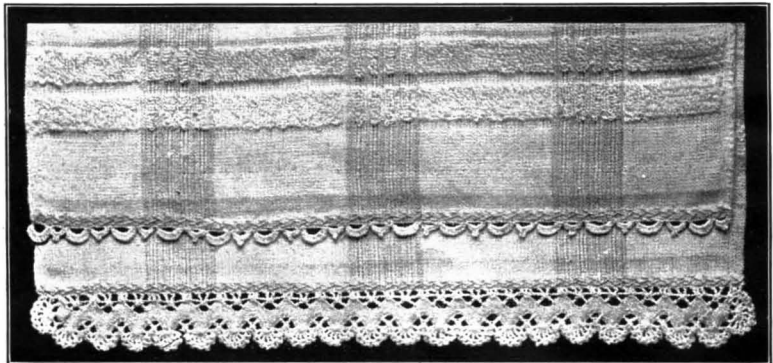
10th row: 1 cl., 1 op., 5 cl., 3 op., 1 cl. *11th row:* 6 cl., 4 op., 1 cl. Repeat from *.

Edge for Insertion End of Towel: Fasten thread in corner of towel, ch. 3, 3 d.c. in edge, ch. 2, over twice as for a t.c. and one-eighth inch from last d.c. take a stitch, over and through 2 stitches, leaving 3 on the hook, over again and take a stitch in edge, work stitches off 2 at a time, ch. 2, d.c. at the crossing of the stitch (see illustration), ch. 2, 4 more d.c. in the edge and repeat across. *2d row:* Ch. 2, shell of (5 t.c. with 1 ch. between) in 2 ch. of the cross treble, ch. 2, sl.st. in center of the 4 d.c. and repeat. *3d row:* Ch. 4 and catch with sl.st. in each mesh of shell and in sl.st. between shells.

Edge for Plain End of Towel: Make shell of 6 t.c. with 1 ch. between in edge of towel, with 3 ch. before and after each shell fastened in edge of towel with s.c. *2d row:* * Ch. 3, sl.st. in first mesh of shell, (ch. 4, sl.st.) in each remaining mesh of shell, ch. 3, s.c. in s.c. between shells and repeat from *.

Turkish Towel with a Wide and Narrow Crochet Edge No. 455

Select a fine Turkish towel with blue stripe similar to the one illustrated. Make a narrow hem at each end and finish with a row of featherstitching in blue. For one end an inch wide edge is crocheted in white cordonnet with rickrack braid and finished with a row of single crochet in blue to match the stripe in the towel. This will give a very pretty edge. A row of tiny cross stitches may be worked in blue, outlining the lower edge of the braid. Pink and white edge on a towel in these colors would be equally effective. For the opposite end of the towel a narrow edge is worked in all white.



Turkish Towel with Crochet Edges No. 455

Materials: Corticelli Mercerized Cordonnet, Art. 66, 1 ball White, Size 30, 1 ball Blue No. 213; half a yard of $\frac{3}{8}$ -inch rickrack braid; steel hook No. 9.

Wide Edge: Finish each end of the braid with a flat hem. Fasten thread to upper point of braid,



(d.c. with 2 ch. between) 3 times along end of braid, ch. 2, * shell 6 t.c. with 1 ch. between in first point of lower edge of braid, ch. 2, d.c. in center of side of the point leaving last 2 st. on the hook, d.c. in middle of side of next point, over and through 2 st., then over and through last 3 st., ch. 2, and repeat from *. *2d row:* For the next row break thread and fasten in last 2 ch. of last shell, and make a shell in center of the end of the braid (see illustration), and, without breaking thread, work opposite side of braid as follows: Ch. 3, d.c. in center of the side of point, leaving last 2 st. on the hook, another d.c. in the other side, working off last 3 st. together; repeat across to the other end and finish with a shell, joining to first 2 ch. of first shell. Break thread and fasten in beginning of the upper edge. *2d row:* Make 2 ch., (d.c., 2 ch., d.c.) in d.c. below, ch. 2, 3 d.c. at point of the braid, and repeat. With the blue, finish the lower edge with a row of 4 ch., fastened by sl.st. in each mesh of scallops and in center of chain between scallops. Sew edge to towel. A row of running or tiny cross stitches in blue along the lower edge of the braid adds to the effect.

Narrow Edge: For the opposite end of towel, fasten white thread in corner of hem, 6 s.c. in the edge of hem, ch. 7, turn, sl.st. in first s.c. made, turn, (s.c., 4 h.d.c., s.c.) in 7 ch., 4 s.c. in edge, ch. 5, turn, sl.st. in first of the 4 s.c., turn, 3 s.c., p., 3 s.c. in 4 ch., and repeat from beginning.

Two Insertions in Filet Lancet Crochet No. 456

The insertions in these two towels are worked in what is sometimes called Filet Lancet Crochet. It has also been called Imitation Filet Guipure, as it has somewhat the appearance of embroidery on a net ground. This style of crochet is especially suitable for towels, bedroom linens, or underwear.

Materials: Corticelli Mercerized Cordonnet, Art. 66, 1 ball White, Size 50, for each towel; steel hook No. 12.

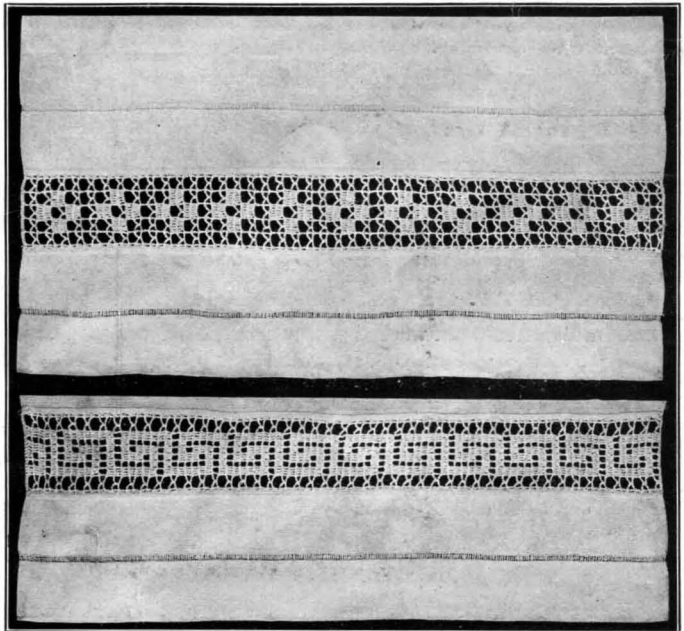
Towel No. 456a: Ch. 35, 1 d.c. in 4th st., * ch. 3, 1 s.c. in 3d st., ch. 3, 1 d.c. in 3d st., repeat from * 4 more times, 1 d.c. in last st., turn. *2d row:* Ch. 3, 1 d.c. in 2d d.c., (ch. 5, 1 d.c. in next d.c.) repeat 4 times, 1 d.c. on ch. of 3, turn. *3d row:* Ch. 3, 1 d.c. in d.c., * ch. 3, 1 s.c. in 3d st., ch. 3, 1 d.c. in 3d st. *, repeat between stars, 5 d.c. on 5 ch., 1 d.c. on d.c., repeat between stars, d.c. on ch. of 3, turn. *4th row:* Ch. 3, 1 d.c., ch. 5, 1 d.c. on d.c., ch. 5, 1 d.c., 6 d.c. on 6 d.c., ch. 5, 1 d.c., ch. 5, 1 d.c., 1 d.c. on 3 ch., turn. *5th row:* Ch. 3, 1 d.c., * ch. 3, 1 s.c. in 3d st., ch. 3, 1 d.c. in 3d st. *, 6 d.c. on d.c., repeat between stars, d.c. on 3 ch., turn. *6th row:* Ch. 3, 1 d.c., ch. 5, 7 d.c., ch. 5, 7 d.c., ch. 5, 2 d.c., turn. *7th row:* Ch. 3, 1 d.c., * ch. 3, 1 s.c. in 3d st., ch. 3, 1 d.c. in 3d st. *, repeat between stars, 6 d.c., repeat between stars twice, 1 d.c., turn. *8th row:* Ch. 3, 1 d.c., ch. 5, 1 d.c., ch. 5, 7 d.c., ch. 5, 1 d.c., ch. 5, 2 d.c., turn. *9th row:* Ch. 3, 1 d.c., * ch. 3, 1 s.c. in 3d st., ch. 3, 1 d.c. in 3d st. *, repeat between stars 4 times, 1 d.c., turn. Repeat from 2d row.

Towel No. 456b: Ch. 35, 1 d.c. in 4th st., * ch. 3, 1 s.c. in 3d st., ch. 3, 1 d.c. in 3d st. *, 5 open filet meshes, 1 closed filet mesh, repeat between stars, 1 d.c. in last st., turn. *2d row:* Ch. 3, 1 d.c. in

2d d.c., ch. 5, 1 cl., 1 op., 4 cl., ch. 5, d.c. in last d.c., d.c. in ch. of 3, turn. *3d row:* Ch. 3, d.c. in d.c., * ch. 3, s.c. in 3d st., ch. 3, skip 2 st. *, 1 cl., 2 op., 1 cl., 1 op., 1 cl., repeat between stars, 2 d.c., turn. *4th row:* Ch. 3, 1 d.c., ch. 5, 1 cl., 1 op., 2 cl., 1 op., 1 cl., ch. 5, 1 d.c. in d.c., d.c. in ch. 3, turn. *5th row:* Ch. 3, 1 d.c., ch. 3, 1 s.c. in 3d st., ch. 3, 1 cl., 1 op., 1 cl., 2 op., 1 cl., ch. 3, s.c. in 3d st., ch. 3, d.c. in 3d st., d.c. in ch. 3, turn. *6th row:* Ch. 3, 1 d.c., ch. 5, 4 cl., 1 op., 1 cl., 5 ch., 1 d.c. in last d.c., d.c. in ch. 3, turn. *7th row:* Ch. 3, 1 d.c., ch. 3, s.c. in 3d st., ch. 3, 1 cl., 5 op., ch. 3, s.c. in 3d ch., ch. 3, d.c. in d.c., d.c. in ch. 3, turn. *8th row:* Ch. 3, 1 d.c., ch. 5, 6 cl., ch. 5, 1 d.c. in d.c., d.c. in ch., turn. *9th row:* Ch. 3, 1 d.c., ch. 3, s.c. in 3d st., ch. 3, 5 op., 1 cl., ch. 3, s.c. in 3d st., ch. 3, d.c. in 3d st., d.c. in ch. 3. Repeat from 2d row.

No. 456a

No. 456b





Net Collar with Tatted Edge No. 457

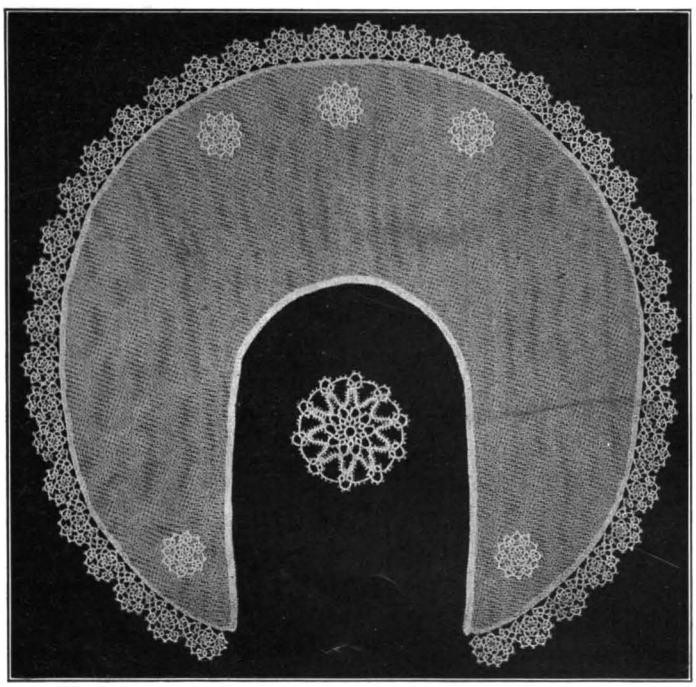
A wide, soft collar of net, with dainty tatted edge and medallions, is very distinctive. If the net is used double it will improve the appearance of the collar and give it firmness, and for a wide collar similar to the one illustrated, but a half yard of the net is required. The large medallion, No. 458, shown in illustration with collar is a different design.

Materials: Corticelli Mercerized Cordonnet, Art. 66, one ball White, Size 80.

Instructions: (Abbreviations, d.s., double stitch, p., picot, r., ring.) With shuttle make r. of 4 d.s., p., 4 d.s., p., 4 d.s., p., 4 d.s. With thread, 5 d.s., p., 1 d.s., p., 1 d.s., p., 5 d.s. *2d ring:* * 4 d.s., join to last p. of first r. with thread, 5 d.s., p., 1 d.s., p., 1 d.s., p., 5 d.s. *; repeat between *'s until there are 5 rings and 5 of thread. *6th ring:* 4 d.s., join to last p. of fifth r., 4 d.s., p., 4 d.s., join to first p. of first r. *6th thread:* 5 d.s., p., 1 d.s., p., 1 d.s., p., 5 d.s., join to the beginning of the first r. Fasten, cut threads. **2d row:* With shuttle, 4 d.s., p., 4 d.s., join to first p. in any of the clusters of 3 which have been made with the thread of the center, 1 d.s., p., 4 d.s. With thread, 5 d.s., p., 1 d.s., p., 1 d.s., p., 5 d.s. With shuttle, 4 d.s., p., 4 d.s., join to third p. in same cluster of 3 as first r. is joined *; repeat between *'s until there are 10 rings and 9 of thread, fasten and cut threads.

The second scallop is made the same as the first until 8 rings and 7 of the thread are made. In the eighth made of the thread, 5 d.s., p., 1 d.s., join to first scallop in the middle p. of the eighth thread, 1 d.s., p., 5 d.s. With shuttle, 4 d.s., p., 4 d.s., join to first of cluster of 3 p. in fifth thread of center, 4 d.s., p., 4 d.s. With thread, 5 d.s., p., 1 d.s., join to middle p. of the ninth made with thread on first scallop, fasten, cut threads. Sew to edge of collar.

Medallions: The center of the medallion is made the same as the center of the scallops on edge. **2d row:* With shuttle, 4 d.s., p., 4 d.s., join to first p. of cluster of 3 on any thread of the center, 4 d.s., p., 4 d.s. With thread, 6 d.s., p., 1 d.s., p., 1 d.s., p., 6 d.s. With shuttle, 4 d.s., p., 4 d.s., join to third p. of cluster of 3 of the center *; repeat between *'s until there are 12 rings and 12 with thread, fasten to ring where the 2d row began, fasten and cut threads. Sew 3 medallions on back of collar and one on each point of the front.



Net Collar with Tatted Edge, No. 457. Medallion No. 458

Tatted Medallion No. 458: Feather-edge braid is used with the tating. The medallion is $3\frac{1}{4}$ inches in diameter when worked with Corticelli Mercerized Cordonnet, Size 30.

Instructions: R. of 10 p. separated by 2 d.s., tie and cut threads. R. of 3 d.s., p., 3 d.s., join to center, 3 d.s., p., 3 d.s., attach spool thread, ch. of 3 d.s., p., 2 d.s., join to third p. of braid with 1 d.s. between, 2 d.s., p., 3 d.s. Alternate r. and ch. until 10 of each are made, joining rings to each other by first p. and each ch. to the braid with 12 p. of braid between the joinings. Fasten ends of the braid. For the outer edge, * r. of 3 d.s., p., 3 d.s., join to braid, 3 d.s., p., 3 d.s., attach spool thread, ch. of 3 d.s., 3 p. separated by 2 d.s., 3 d.s., another r. joined to the first by first p. and to p. of braid, leaving 1 p. of braid between rings. Another ch., and repeat from * 9 more times.

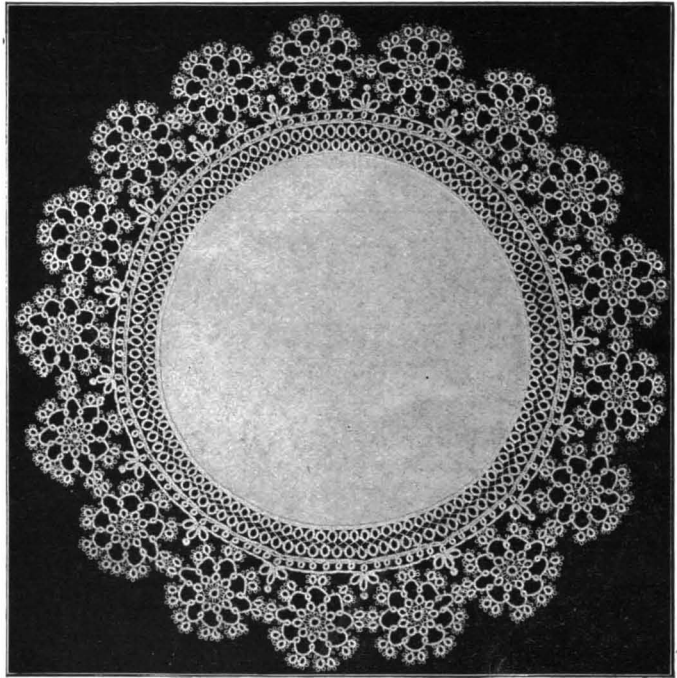
Doily with Wide Tatted Edge No. 459

Instructions: Turn edge of linen and cover with single crochet for a foundation on which to join the tating. R. 3 d.s., p., 5 d.s., join to s.c. of foundation, 5 d.s., p., 3 d.s., close. Allow about $\frac{1}{2}$ inch of thread, r. 4 d.s., p., 6 d.s., p., 6 d.s., p., 4 d.s., close. Allow about $\frac{1}{2}$ inch of thread, turn, and repeat from beginning, joining first p. to the last p. of the first ring made. Take care to keep the circle flat, joining the tating to every fifth s.c. of foundation.

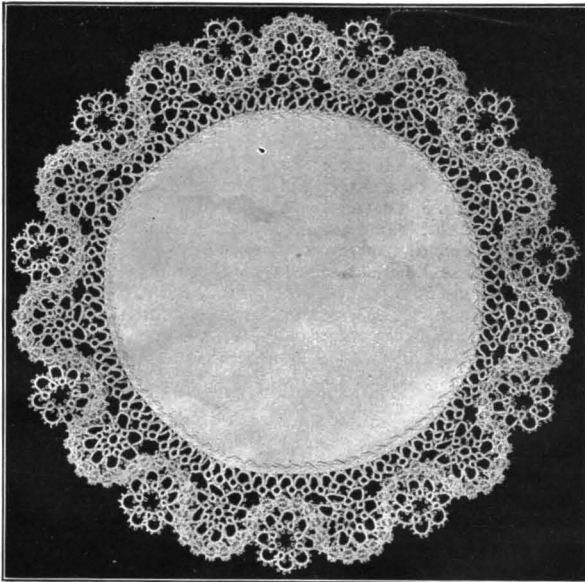


Outer Wheels: R. 1 d.s., 9 p. separated by 2 d.s., 1 d.s., close, draw through first p. and knot by slipping shuttle through, r. 3 d.s., short p., 3 d.s., p., 3 d.s., p., 3 d.s., close, making 9 rings, tie and cut thread. Two shuttles are now required. With first thread, r. 4 d.s., join to p. of first ring, 4 d.s., close. Second thread, ch. 3 d.s., p., 3 d.s. Drop first shuttle. With second shuttle, r. 3 d.s., p., 2 d.s., p., 2 d.s., p., 2 d.s., p., 3 d.s., close. Ch. 4 d.s., then make another r. joining the rings. With first shuttle, ch. 3 d.s., p., 3 d.s., turn, r. 4 d.s., join as before, r. 4 d.s., close. Repeat until there are 9 groups, join and fasten neatly. Next wheel join to first as illustrated, taking care to keep circle by leaving 4 groups for outer circle and 3 groups for inner circle. Make 18 wheels.

To Join the Center to Wheels: With the two threads join to outer ring of center, ch. 5 d.s., join to next ring; repeat, keeping circle perfectly flat yet free. *2d row:* Join at p., ch. 5 d.s., r. 5 d.s., p., 5 d.s., close; repeat. Now comes the difficult part, where an extra ring must be put in now and then; plan to have seven rings for each large wheel, making 18 groups of 7 rings, or 126 in all. *3d row:* With two shuttles, join to p. of ring, ch. 6 d.s., join next ring, ch. 6 d.s., join r. at same time, join middle p. of middle group of wheel, ch. 6 d.s., join



Doily with Wide Tatted Edge No. 459



Doily with Edge of Tating and Braid No. 460

rings by the first p. Join each of 6 ch. by the second and fourth p. to 2 medallions of braid (see illustration). On the other side of the braid make another wheel of 8 rings and chains, r. of 2 d.s., 5 p. separated by 2 d.s., 2 d.s. and joined by second p., make ch. same as in first wheel. Join 5 ch. to the braid same as in the first wheel. Alternate these 2 wheels until 11 of each are made. Leave 3 medallions of braid at the inner edge between the wheels and 5 at the outer edge. Around the inner edge make a row of rings and chains alternating, r. of 4 d.s., 3 p. separated by 4 d.s., 4 d.s., joined to each other by first p. and to braid and wheels by second p., ch. of 4 d.s., p., 2 d.s., p., 4 d.s.

Doily with Edge of Tating and Braid No. 460

Fancy braid is combined with the tating for the edge of this 12-inch doily, the picots on the braid running in groups of three.

Materials: Corticelli Mercerized Gordonnnet, White, Size 40; 1½ yards of braid.

Instructions: R. of 8 p. separated by 2 d.s., tie and cut threads. Around this work a row of rings and chains alternating, r. of 3 d.s., p., 3 d.s., join to center, 3 d.s., p., 3 d.s., and ch. of 3 d.s., 5 p. separated by 2 d.s., 3 d.s. Join the

ch. 6 d.s., join, ch. 2 d.s., p., 4 d.s., join. Now make leaf motif between the wheels, r. 4 d.s., join, p. in ch., 6 d.s., join middle p. in next group in wheel, 6 d.s., p., 4 d.s., close. With second thread, ch. 4 d.s., join p., ch. 6 d.s., drop first shuttle. With second shuttle, r. 11 half stitches loosely, close, ch. 6 d.s., p., 4 d.s., draw close, r. 4 d.s., join, 6 d.s., join ring on next wheel, 6 d.s., p., 4 d.s., close, ch. 4 d.s., join p., 2 d.s., join ring of last row; repeat.



Crocheted Yoke for Nightgown No. 461

A pretty fan pattern is used in this yoke. The neck is finished with a dainty shell edge, with beading for ribbon, and the same edge is used around the bottom of the yoke. The model is 4 inches wide.

Materials: Corticelli Mercerized Gordonnnet, Art. 66, 2 balls White, Size 50; steel hook No. 12.

Instructions: Ch. 67, 3 d.c. in 7th st. from hook, ch. 2, 3 d.c. in same st., ch. 3, skip 2 st., s.c. in 3d st., skip 2 st., s.c. in 3d, ch. 4, skip 2, sl.st. in 3d, ch. 2, sl.st. in 3d, turn. *2d row:* 10 d.c. on 4 ch., d.c.

on d.c., ch. 5, d.c. in 1st d.c. of shell, ch. 2, 3 d.c. on 2 ch., ch. 2, 3 d.c. on same ch., ch. 2, skip 2 st., d.c. in 3d st., ch. 5, turn. *3d row:* 3 d.c. on 2 ch., ch. 2, 3 d.c. on same ch., ch. 3, s.c. in last d.c. of preceding shell, ch. 3, d.c. in d.c., ch. 3, s.c. on 5 ch., ch. 3, d.c. on d.c., ch. 3, (skip 1 d.c., d.c. in next d.c., ch. 3) 5 times, sl.st. in 3d ch. st., ch. 3, skip 2 st., sl.st. in 3d st., turn. *4th row:* (3 d.c. on 3 ch., d.c. on d.c.) 6 times, (ch. 5, d.c. on d.c.) twice, ch. 2, 3 d.c. on 2 ch., ch. 2, 3 d.c. on same ch., ch. 2, d.c. in 3d ch. st., ch. 5, turn. *5th row:* 3 d.c. on 2 ch., ch. 2, 3 d.c. on same



Crocheted Yoke for Nightgown No. 461

ch., ch. 3, s.c. in last d.c. of shell, ch. 3, d.c. on d.c., ch. 3, (s.c. on 5 ch., ch. 3, d.c. on d.c.) twice, (ch. 2, skip 1 d.c., d.c. in next) 11 times, ch. 2, sl.st. in 3d ch. st., ch. 2, skip 2 ch. st., sl.st. in 3d. *6th row:* (Ch. 3, d.c. on d.c.) 12 times, (ch. 5, d.c. on d.c.) 3 times, ch. 2, 3 d.c. on 2 ch., ch. 2, 3 d.c. on same ch., ch. 2, d.c. in 3d ch. st., ch. 5, turn. *7th row:* 3 d.c. on 2 ch., ch. 2, 3 d.c. on same ch., ch. 3, s.c. on last d.c. in shell, ch. 3, d.c. on d.c., (ch. 3, s.c. on 5 ch., ch. 3, d.c. on d.c.) 3 times, 3 d.c. on 3 ch., (d.c. on d.c., 3 d.c. on next 3 ch.) 11 times, sl.st. on 3d ch. st., ch. 3, sl.st. in 3d ch. st., turn. *8th row:* D.c. in each d.c., (ch. 5, d.c. on d.c.) 4 times, ch. 2, 3 d.c. on 2 ch., ch. 2, 3 d.c. on same ch., ch. 2, d.c. in 3d ch. st., ch. 5, turn. *9th row:* 3 d.c. on 2 ch., ch. 2, 3 d.c. on same ch., ch. 3, s.c. in last d.c. of shell, ch. 3, d.c. in d.c., (ch. 3, s.c. on 5 ch., ch. 3, d.c. on d.c.) 4 times, (ch. 2, skip 1 d.c., d.c. in next) 23 times, ch. 2, sl.st. in 3d ch. st., ch. 3, skip 2, sl.st. in 3d ch. st., turn. *10th row:* (Ch. 2, d.c. in d.c.) 24 times, (ch. 5, d.c. in d.c.) 5 times, ch. 2, 3 d.c. on 2 ch., ch. 2, 3 d.c. on same ch., ch. 2, d.c. in 3d ch. st., ch. 5, turn. *11th row:* 3 d.c. on 2 ch., ch. 2, 3 d.c. on same ch., ch. 3, s.c. in last s.c. of shell, ch. 3, d.c. on d.c., (ch. 3, s.c. on 5 ch., ch. 3, d.c. on d.c.) 5 times, d.c. on 2 ch., (s.c. on same ch., s.c. on next 2 ch., 2 d.c. on same ch., s.c. on same ch.) 22 times, s.c. on next 2 ch., d.c. on same ch., sl.st. in 3d ch. st., ch. 3, skip 2 ch. st., sl.st. in 3d, turn. *12th row:* (Ch. 8, skip 2 scallops, s.c. between 2d and 3d) 11 times, ch. 8, d.c. in last d.c. of scallop, (ch. 5, d.c. in d.c.) 6 times, ch. 2, 3 d.c. on 2 ch., ch. 2, 3 d.c. on same ch., ch. 2, d.c. on 3d ch. st., ch. 5, turn. *13th row:* 3 d.c. on 2 ch., ch. 2, 3 d.c. on same ch., ch. 3, s.c. in last d.c. of shell, ch. 3, d.c. in d.c., (ch. 3, s.c. on 5 ch., ch. 3, d.c. on d.c.) 6 times, ch. 3, (s.c. on 8 ch., ch. 3, s.c. on same ch., ch. 7) 11 times, ch. 3, sl.st. in 3d ch. st., ch. 3, sl.st. in 3d ch. st., turn. *14th row:* (Ch. 7, s.c. on 7 ch., ch. 3, s.c. on same ch.) 11 times, ch. 7, d.c. on d.c., (ch. 5, d.c. on d.c.) 7 times, ch. 2, 3 d.c. on 2 ch., ch. 2, 3 d.c. on same ch., ch. 2, d.c. in 3d ch. st., ch. 5, turn. *15th row:* Ch. 3, s.c. in last d.c. of shell, ch. 3, d.c. in d.c., (ch. 3, s.c. on 5 ch., ch. 3, d.c. in d.c.) 7 times, ch. 3, s.c. on 7 ch., ch. 3, s.c. on same ch., (ch. 7, s.c. on next 7 ch., ch. 3, s.c. on same ch.) 11 times, ch. 3, sl.st. in 3d ch. st., ch. 3, skip 2 ch. st., sl.st. in 3d st., turn. *16th row:* (Ch. 8, s.c. on 7 ch., ch. 3, s.c. on same ch.) 11 times, ch. 8, d.c. in d.c., (ch. 5, d.c. in d.c.) 9 times, ch. 2, 3 d.c. on 2 ch., ch. 2, 3 d.c. on same ch., ch. 2, d.c. in 3d ch. st., ch. 5, turn. *17th row:* 3 d.c. on 2 ch., ch. 2, 3 d.c. on same ch., ch. 3, s.c. in last d.c. of shell, ch. 3, d.c. in d.c., (ch. 3, s.c. on 5 ch., ch. 2, d.c. in d.c.) 8 times, ch. 3, s.c. on 8 ch., ch. 3, s.c. on same ch., (ch. 8, s.c. on next ch., ch. 3, s.c. on same ch.) 11 times, ch. 3, sl.st. in 3d ch. st., ch. 3, skip 2 ch. st., sl.st. in 3d st., turn. *18th row:* * Ch. 1, (d.c. on 8 ch., picot, d.c. on same ch., ch. 1) 5 times, repeat from * 10 times, ch. 1, d.c. in d.c., (ch. 5, d.c. in d.c.) 9 times, ch. 2, 3 d.c. on 2 ch., ch. 2, 3 d.c. on same ch., ch. 2, d.c. in 3d ch. st., ch. 5, turn. Make eight more of these scallops, or as many as are required.

Beading for Neck: * Thread over hook twice, as for a treble, work only half of it, keep stitches on hook, d.c. in next d.c., work other half of treble, ch. 2, d.c. in center of treble just made, ch. 2; repeat from *.

Edge: S.c., * ch. 1, skip next space, d.c. in next space, (picot, d.c. in same space, ch. 1, d.c. in same space) 3 times, ch. 1, skip 1 space, s.c. in next; repeat from *. Finish bottom of yoke with this same edge.



Shell Crocheted Yoke No. 462

This yoke is about 3½ inches wide and is suitable for either a nightdress or camisole. The effective shell pattern is made with groups of roll stitch.

Materials: Corticelli Mercerized Cordonnnet, Art.66, 2 balls White, Size 50; steel hook No. 12.

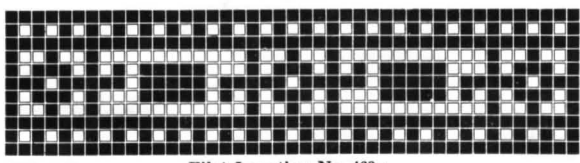
Instructions: Front and Back. Ch. 36, 3 d.c. in 6th st. from hook, 3 d.c. in same st., * ch. 6, skip 7 st., join with sl.st. in 8th st., ch. 3, skip 2, join with sl.st. in 3d st., ch. 6, skip 7, 3 d.c. in 8th st., ch.

2, 3 d.c. in same st., repeat from * once, ch. 5, join 1st st. *2d row:* ** Ch. 6, 8 roll st. of 20 overs, (wind thread around hook smoothly 20 times, insert hook in work, take up thread and draw through all stitches on hook, thread over, draw through the remaining stitch) under 5 ch., (the 6 ch. loops between rolls on this side are added after yoke is finished), ch. 1, 3 d.c. under 2 ch., ch. 2, 3 d.c. under same ch., * ch. 2, 8 roll st. (20 over) under 3 ch., ch. 2, 3 d.c. under 2 ch., ch. 2, 3 d.c. under same ch., repeat from * once, ch. 1, 8 roll st. (20 over) under 5 ch. *3d row:* (Ch. 6, sl.st. between rolls) 7 times, ch. 2, 3 d.c. under 2 ch., ch. 2, 3 d.c. under same ch., * ch. 6, sl.st. between 3d and 4th roll st., ch. 3, sl.st. between 5th and 6th roll st., ch. 6, 3 d.c. under 2 ch., ch. 2, 3 d.c. under same ch.; repeat from * once. *4th row:* Ch. 4, 3 d.c. under 2 ch., ch. 2, 3 d.c. under same ch., * ch. 2, 8 roll st. (20 over) under 3 ch., ch. 2, 3 d.c. under 2 ch., ch. 2, 3 d.c. under same ch.; repeat from * once. *5th row:* Ch. 5, 3 d.c. under 2 ch., ch. 2, 3 d.c. under same ch., * ch. 6, sl.st. between 3d and 4th roll st., ch. 3, sl.st. between 5th and 6th roll st., ch. 6, 3 d.c. under 2 ch., ch. 2, 3 d.c. under same ch., repeat from * once, ch. 5, sl.st. in 1st d.c. of preceding row; repeat from **. Make 12 scallops for front and 12 for back (or more if a larger yoke is needed), join thread between 1st and 2d roll st., * ch. 6, sl.st. between each roll st., ch. 6, sl.st. under 6 ch. at end of roll st., s.c. between 1st and 2d roll st. in next cluster; repeat from *.

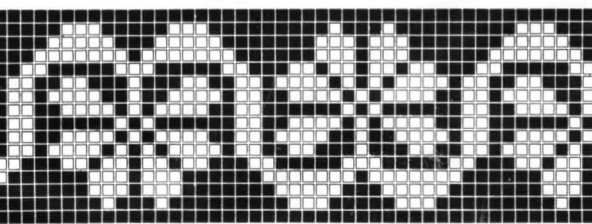


Shell Crochet Yoke No. 462

Sleeve: Ch. 15, 3 d.c. in 6th st. from hook, ch. 2, 3 d.c. under same st., ch. 4, skip 7, 3 d.c. in 8th st., ch. 2, 3 d.c. in same st., ch. 5, sl.st. in 1st ch. st. *2d row:* * Ch. 6, 8 roll st. (20 over) under 5 ch., (the 6 ch. loops between rolls on this side are added after sleeve is finished), ch. 1, 3 d.c. under 2 ch., ch. 2, 3 d.c. under same ch., ch. 4, 3 d.c. under next 2 ch., ch. 2, 3 d.c. under same ch., ch. 1, 8 roll st. under 5 ch. *3d row:* (Ch. 6, sl.st.) between each roll st., ch. 2, 3 d.c. under 2 ch., ch. 2, 3 d.c. under same ch., ch. 4, 3 d.c. under next 2 ch., ch. 2, 3 d.c. under same ch. *4th row:* Ch. 4, 3 d.c. under 2 ch., ch. 2, 3 d.c. under same ch., ch. 4, 3 d.c. under next 2 ch., ch. 2, 3 d.c. under same ch. *5th row:* Ch. 5, 3 d.c. under 2 ch., ch. 2, 3 d.c. under same ch., ch. 4, 3 d.c. under next 2 ch., ch. 2, 3 d.c. under same ch., ch. 5, sl.st. in 1st d.c. in preceding row; repeat from *. Make 22 rows of scallops and join, for each sleeve. Join 4 scallops to end of front, allow 6 scallops for under arm, join next 4 scallops to end of back; this will leave 8 scallops for shoulder.



Filet Insertion No. 463a



Filet Insertion No. 463b

3d row: (Ch. 6, sl.st.) between each roll st., ch. 2, 3 d.c. under 2 ch., ch. 2, 3 d.c. under same ch., ch. 4, 3 d.c. under next 2 ch., ch. 2, 3 d.c. under same ch., ch. 1, 8 roll st. under 5 ch. *3d row:* (Ch. 6, sl.st.) between each roll st., ch. 2, 3 d.c. under 2 ch., ch. 2, 3 d.c. under same ch., ch. 4, 3 d.c. under next 2 ch., ch. 2, 3 d.c. under same ch. *4th row:* Ch. 4, 3 d.c. under 2 ch., ch. 2, 3 d.c. under same ch., ch. 4, 3 d.c. under next 2 ch., ch. 2, 3 d.c. under same ch. *5th row:* Ch. 5, 3 d.c. under 2 ch., ch. 2, 3 d.c. under same ch., ch. 4, 3 d.c. under next 2 ch., ch. 2, 3 d.c. under same ch., ch. 5, sl.st. in 1st d.c. in preceding row; repeat from *. Make 22 rows of scallops and join, for each sleeve. Join 4 scallops to end of front, allow 6 scallops for under arm, join next 4 scallops to end of back; this will leave 8 scallops for shoulder.

Filet Insertions No. 463

These two insertions are suitable for towels. Insertion No. 463a measures 1½ inches and Insertion No. 463b 3 inches wide. The patterns can easily be followed from the black and white drawings, allowing three times the number of stitches for the foundation chain as there are meshes in the first row, plus 6 stitches.



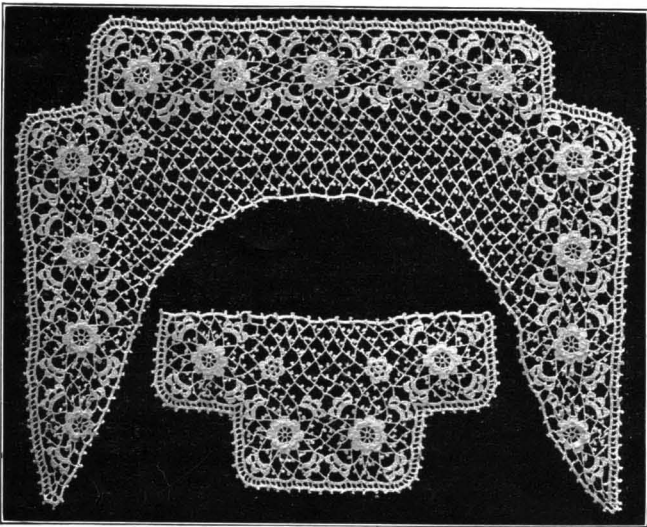
Collar and Cuff in Irish Crochet No. 464

At the present time there is an active revival of Irish Crochet and many decorative uses have been found for this beautiful lace. Often flat pieces are utilized for purposes entirely different from what they were originally intended, but for which they are quite as appropriate. Thus with sport clothes continually demanding new and novel ideas in pockets, the clever woman will find many ways of converting a collar and cuff set into smart pockets of various shapes and sizes.

The collar shown in the illustration is about 4 inches deep at center of back; cuffs of same depth.

Materials: Corticelli Mercerized Gordannet, Art. 66, 2 balls White, Size 100, are sufficient for the three pieces of the set; steel hook No. 14.

Collar No. 464a: Medallion: Begin with rose in center, ch. 8, sl.st. in 1st st. to form a ring, ch. 6, * d.c. on ring, ch. 3; repeat from * 6 times, sl.st. in 3d st. of 6 ch. *2d row:* On each 3 ch. make 1 sl.st., 1 s.c., 5 d.c., 1 s.c., 1 sl.st., 1 s.c. on 1st sl.st. *3d row:* Ch. 5, turn, 1 sl.st. between 2 last petals made, * ch. 5, 1 sl.st. between next; repeat from * 6 times, turn. *4th row:* Over each 5 ch. make 1 sl.st., 1 s.c., 7 d.c., 1 s.c., 1 sl.st. *5th row:* Sl.st. to 4th st. in petal, * ch. 3, p. (of 5 st.), ch. 7, p., ch. 3, skip 3 d.c., s.c. in next, ch. 3, p., ch. 7, p., ch. 3, s.c. in center of next petal, ch. 3, p., ch. 7, p., ch. 3, s.c. in 4th st. of next petal; repeat from * 4 times, tie and cut thread. *6th row:* Join thread in center of 7 ch., **ch. 3, p., ch. 7, p., ch. 3, s.c. in center of next 7 ch., ch. 3, p., ch. 7, p., ch. 3, s.c. in center of next 7 ch., ch. 11 (this begins corner of medallion), s.c. in next 7 ch., turn, 12 s.c. on 11 ch., ch. 1, turn, 12 s.c. on 12 s.c., turn, * ch. 6, s.c. on 4th s.c.; repeat from * twice, turn, on each 6 ch. make 1 sl.st., 1 s.c., 5 d.c., 1 s.c., 1 sl.st.; repeat from ** 3 times. This completes a medallion. Make 5 medallions for across back, and 3 and 2/3 of a medallion for each side as shown in illustration, joining medallions in 2d d.c. in 1st scallop of corner; the medallions in corner



Collar and Cuff in Irish Crochet No. 464

at back of collar are joined by the 2 d.c. in center scallop of the corner of medallion. **Small Roses at Back:** Ch. 6, join, 12 s.c. in ring. *2d row:* * Ch. 5, skip 1, s.c. in next; repeat from * 5 times. *3d row:* On each 5 ch. make 1 s.c., 6 d.c., 1 s.c. **1st row inside of medallions:** Join thread on 1st 7 ch. next corner on the right, * ch. 3, p., ch. 7, p., ch. 3, s.c. on next 7 ch., ch. 3, p., ch. 7, p., ch. 3, s.c. in center of 1st scallop of corner in next medallion, ch. 3, p., ch. 7, p., ch. 3, t. in center of next scallop of corner, t. in center scallop of corner of next medallion, ch. 3, p., ch. 7, p., ch. 3, s.c. in next scallop of corner, ch. 3, p., ch. 7, p., ch. 3, s.c. on 7 ch., repeat from * once, ch. 3, p., ch. 3, s.c. in petal of small rose, ch. 3, p., ch. 3, s.c. on 7 ch. of medallion, ch. 3, p., ch. 3, t. in 1st scallop of corner, t. in 1st scallop of corner in next medallion, t. in next petal of small rose, ch. 3, p., ch. 3, s.c. on 7 ch. of same medallion, ch. 3, p., ch. 3, s.c. on next petal of small rose, ch. 3, p., ch. 3, s.c. on 7 ch., * ch. 3, p., ch. 7, p., ch. 3, s.c. on 1st scallop of corner, ch. 3, p., ch. 7, p., ch. 3, t. in 2d scallop of corner, t. in 2d scallop of corner in next medallion, ch. 3, p., ch. 7, p., ch. 3, s.c. on next scallop of corner, ch. 3, p., ch. 7, p., ch. 3, s.c. on 7 ch., ch. 3, p., ch. 7, p., ch. 3, s.c. on 7 ch., repeat from * 2 times, ch. 3, p., ch. 7, p., ch. 3, s.c. on 1st scallop of corner, ch. 3, p., ch. 7, p., ch. 3, t. in 2d scallop of corner, t. in 2d scallop of corner in next medallion, ch. 3, p., ch. 7, p., ch. 3, s.c. on next scallop of corner, ch. 3, p., ch. 7, p., ch. 3, s.c. on 7 ch., ch. 3, p., ch. 3, s.c. in small rose, ch. 3, p., ch. 3, s.c. in 7 ch., ch. 3, p., ch. 3, t. in small rose, t. in corner of medallion, t. in corner of next medallion, ch. 3, p., ch. 3, s.c. in 7 ch., ch. 3, p., ch. 3, s.c. in next petal of small rose, ch. 3, p., ch. 7, p., ch. 3, s.c. in corner of medallion, work chains up this side same as on opposite side, tie and cut thread. *2d row:* Join thread on next petal of small rose at the right, ch. 3, p., ch. 3, s.c. on 4th st. of 7 ch., * ch. 3, p., ch. 7, p., ch. 3, s.c. on next 7 ch., repeat from * 17 times, ch. 3, p., ch. 3, s.c. on petal of small rose at the left, turn. *3d row:* * Ch. 3, p., ch. 7, p., ch. 3, s.c. on 7 ch. in preceding row, repeat from * 18 times, join last ch. to petal of rose, tie and cut thread. *4th row:* Join thread in center of 1st 7 ch. above small rose at the right, ch. 3, p., ch. 3, s.c. on petal of rose, ch. 3, p., ch. 7, p., ch. 3, s.c. on next petal of rose, * ch. 3, p., ch. 7, p., ch. 3, s.c. on 7 ch., repeat from * 18 times, ch. 3, p., ch. 7, p., ch. 3, s.c. on petal of rose, ch. 3, p., ch. 7, p., ch. 3, s.c. on next petal of rose, ch. 3, p., ch. 3, s.c. on 7 ch. above rose, turn. *5th row:* * Ch. 3, p., ch. 7, p., ch. 3, s.c. on 7 ch.; repeat from * 22 times, tie and cut thread. *6th row:* Join thread in next 7 ch. at the right, ch. 3, p., ch. 3, s.c. on 7 ch., * ch. 3, p., ch. 7, p., ch. 3, s.c. on 7 ch., repeat from * 22 times, ch. 3, p., ch. 3, s.c. on 7 ch. at side, turn. *7th row:* * Ch. 3, p., ch. 7, p., ch. 3, s.c. on 7 ch.; repeat from * 22 times, tie and cut thread. *8th row:* (This row begins right side of collar.) Join next 7 ch. at right, * ch. 3, p., ch. 3, s.c. on 7 ch. just made, ch. 3, p., ch. 7, p., ch. 3, s.c. on next 7 ch.; repeat from * 6 times, tie and cut thread. *9th row:* Join thread at starting place of preceding row, * ch. 3, p., ch. 7, p., ch. 3, s.c. on 7 ch. in preceding row; repeat from * 5 times, tie and cut thread. *10th row:* Join thread in 7 ch. at side, ch. 3, p., ch. 3, s.c. on 7 ch. in row just made, * ch. 3,

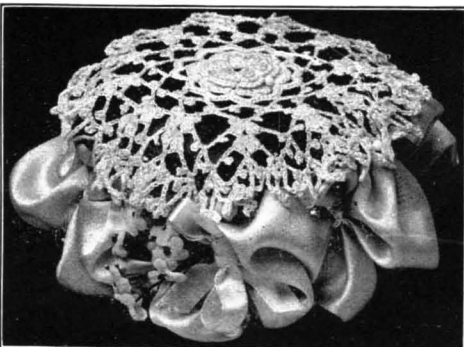


p., ch. 7, p., ch. 3, s.c. on 7 ch.; repeat from * 3 times, tie and cut thread. *11th row:* Join thread at starting place of preceding row, * ch. 3, p., ch. 7, p., ch. 3, s.c. on 7 ch. in row just made; repeat from * twice, tie and cut thread. *12th row:* Join thread in next 7 ch. at side, ch. 3, p., ch. 3, d.c. on 7 ch., * ch. 3, p., ch. 7, p., ch. 3, d.c. on next 7 ch.; repeat from * once, tie and cut thread. *13th row:* Join thread at starting place of preceding row, * ch. 3, p., ch. 7, p., ch. 3, s.c. on 7 ch.; repeat from * once, tie and cut thread. *14th row:* Join thread in next 7 ch. at side, ch. 3, p., ch. 3, s.c. on 7 ch. of preceding row, ch. 3, p., ch. 7, p., ch. 3, s.c. on 7 ch., tie and cut thread. *15th row:* Join thread at starting place of preceding row, ch. 3, p., ch. 7, p., ch. 3, s.c. on 7 ch. in preceding row. For left side of collar join thread in 8th 7 ch. (leaving 7 for center back) and it will be necessary to tie and cut thread only every other row.

Chains around Outer Edge: Join thread in 1st scallop of corner of medallion at point of collar (in front), ch. 3, p., ch. 7, p., ch. 3, s.c. in next scallop of corner, tie and cut thread. *1st row:* Join 4th st. in 7 ch. at point, ch. 11, d.c. in same st., ch. 5, s.c. in p. of ch., ch. 12, s.c. in 1st scallop of corner, ch. 7, s.c. on 7 ch., ch. 7, s.c. on next 7 ch., ch. 7, s.c. on scallop of corner, ch. 10, t. in next scallop of corner, t. in scallop of next medallion ch. 10, s.c. in next scallop of corner, repeat around collar, ch. 7 around, points at back. *2d row:* Make same number of s.c. on each ch. as there are st. in ch. and 1 s.c. in each s.c. and t. *3d row:* D.c. in s.c., * ch. 2, skip 2 s.c., d.c. in next s.c., repeat from * around points in back, between 1st and 3d scallops of medallion skip 1 s.c. *4th row:* 2 s.c. on 2 ch., 1 s.c. on d.c., p. on every other d.c. **To finish Neck:** Ch. of 6 st., connect with s.c. and d.c., 10 ch. of 7 st. across center back, connect with d.c. *2d row:* On each 6 ch. make 5 s.c., 1 s.c. on connecting st., p., on 7 ch. make 6 s.c., 1 s.c. on connecting st., p.

Cuff No. 465b: Make medallion, small rose, filling chains, and row around outer edge the same as for collar and join in the same way, using 2 medallions for the upper part of cuff and one for each end. Finish lower edge with ch. of 7 st. joined by s.c. and d.c. *2d row:* On each 7 ch. make 7 s.c. and 1 s.c. on s.c., p.

Pincushion Cover in Irish Crochet No. 465a



Pincushion Cover in Irish Crochet No. 465a

between 2 picots, ch. 3 to take the place of d.c., 2 d.c., ch. 2, 3 d.c. in same place, thus forming a shell, ch. 7, p., ch. 7, p., ch. 2; repeat the shell in between next 2 picots and repeat around. *14th row:* Same as the 13th row. *15th row:* Same as the 11th row, catching in 2 ch. of shells. *16th row:* Ch. 11, catch back in 7th for p., ch. 4, catch back for p. in same place, ch. 6, sl.st. between 2 picots and repeat, making sl.st. in each sl.st. of last row and between every 2 picots.

Chains to Fasten across the Silk Puff of Cushion: Make ch. long enough to go around edge of disc at the bottom of the cushion and join in ring. Make d.c. in each st. of ring. Sew to bottom of cushion. Divide edge of top and bottom each into equal parts (this one has 8 parts). Fasten thread in the ch. at the bottom, * ch. 16, catch back into 12th for p., ch. 4 for another p., remove the needle and slip through base of 1st p. and draw thread through, thus making a p. on each side of the ch., repeat from * twice, ch. 8, s.c. in edge of disc at top of cushion. Repeat all around and then all around again, crossing the first chains as seen in illustration.

Cover for Talcum Box No. 465b

First cover box smoothly with silk of the same shade as used for the cushion. Make a ch. to fit lower edge of can and join. Ch. 5, (skip 2 d.c., d.c. in next, ch. 2) all around. *2d row:* Same as 1st, mesh over mesh. *3d row:* * Ch. 7, catch back in 5th for p., ch. 7, p., ch. 2, s.c. in 2d mesh; repeat from * around, skipping 2 meshes between s.c. There must be an odd number of loops. *4th and 5th rows:* Same as the 3d, fastening between picots. *6th row:* * Ch. 11, s.c. between next 2 p., ch. 3, turn, 14 d.c. in the ch., ch. 3, turn, d.c. in each of 14 d.c., s.c. between next 2 p.; repeat from *. *7th row:* Same as 3d, catching 1st and 2d chains in the point and center of shell. Work 10 or 12 more rows (or enough to bring the work to top of can) like the 7th, catching each ch. between



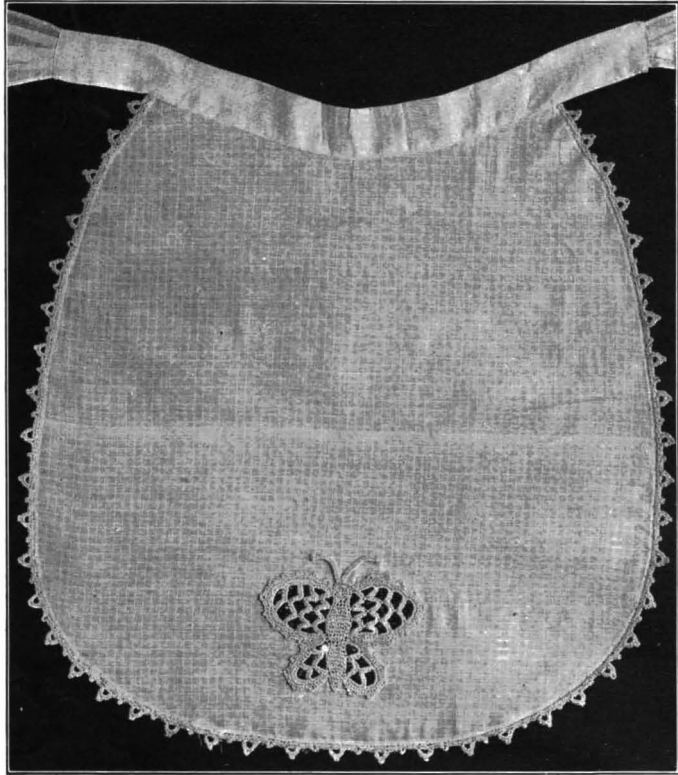
Cover for Talcum Powder Box in Irish Crochet No. 465b



picots of previous row. *13th row:* 7 ch., catch back for p., ch. 2, sl.st. between 2 p. all around, thus drawing in the cover some. *14th row:* 11 ch. and s.c. in each sl.st. of last row. *15th row:* 11 ch. caught by s.c. in center of each ch. of last row. *16th row:* Make (t., p.) 6 times in each 11 ch. and fasten by sl.st. between the chains. Make a rose same as in the cushion. **Leaf:** Ch. 11, s.c. in each st. of ch. beginning in 3d from hook and in the end st. of ch. make 2 s.c. with 2 ch. between, s.c. in each st. along the other side of ch., ch. 2, turn, s.c. back same as in 1st row and repeat until leaf has 5 ridges on one side and 4 on the other. Slip needle through center and draw thread through to form the vein of the leaf. Make another leaf. Sew leaves and rose to the cover as seen in illustration. Run ribbon in top and a thread through the lower edge of cover to draw up.

Apron with Crocheted Butterfly Medallion and Edge No. 466

Fine white barred muslin is used for the apron, and the pretty butterfly motif and edge are crocheted in a delicate shade of wistaria. White may be used instead of wistaria for a dainty all-white apron, or the girl whose favorite color is light blue may use this color with good effect. There is something very fascinating about fashioning a dainty butterfly out of a bit of crochet cotton. The pretty motif is suitable for innumerable forms of decoration and combines very effectively with embroidery for table linen, bedroom sets, or for trimming lingerie or even dresses. For trimming silk underwear it may be worked in Corticelli Crochet Silk.



Apron with Crocheted Butterfly Medallion and Edge No. 466

Materials: Corticelli Mercerized Gordannet, Art. 65, Size 50, one ball Wistaria No. 387; steel hook No. 12.

Instructions: Body of Butterfly. Ch.4 for foundation. Skip 1 st., 3 s.c., ch. 1, turn (always ch. 1 to turn). *2d row:* 3 s.c., turn. *3d row:* 3 s.c., turn. *4th row:* 2 s.c. in first st., 1 s.c. in second st., 2 s.c. in third st., turn. *5th row:* 5 s.c., turn. *6th and 7th rows:* Skip 1 st., 3 s.c. *8th row:* 5 s.c. like 4th row. *9th row:* 5 s.c. *10th and 11th rows:* 7 s.c. *12th and 13th rows:* 9 s.c. *14th and 15th rows:* 7 s.c. *16th and 17th rows:* 5 s.c. *18th and 19th rows:* 3 s.c. *20th and 21st rows:* 5 s.c. *22d and 23d rows:* 7 s.c. *24th and 25th rows:* 5 s.c. *26th and 27th rows:* 3 s.c. *28th and 29th rows:* 2 s.c. *30th row:* 1 s.c. Work 1 s.c. all around body, fasten off.

Wings: Fasten thread in fourth stitch from top of head, ch. 7, s.c. in next fourth st., ch. 7, s.c. in next fourth st., ch. 7, s.c. in next fourth st., turn. *2d row:* 11 s.c. in each loop, turn. *3d row:* Ch. 9, s.c. in center of first loop, ch. 7, s.c. in center of next loop, ch. 9, s.c. in last s.c. of same loop, turn. *4th row:* 13 s.c. in first loop, 11 s.c. in next 2 loops, 6 s.c. in last loop, turn. *5th row:* Ch. 7, s.c. in center of

second loop, repeat in next two loops, turn. *6th row:* 11 s.c. in each of first two loops, 6 s.c. in last, turn. *7th row:* Ch. 7, s.c. in center loop, ch. 7, s.c. in next loop, turn. *8th row:* 11 s.c. in first loop, 6 s.c. in last loop, turn. *9th row:* Ch. 7, s.c. in second loop, turn. *10th row:* 12 s.c. in first loop, 6 s.c. in each unfinished loop, which will bring the work back to the first loop of wing, turn. *11th row:* S.c. in each stitch around wing, fasten into body with sl.st. **Lower Part of Wing:** Ch. 7, s.c. in fourth st. of body, ch. 7, s.c. in third st., turn. *2d row:* 11 s.c. in first loop, 6 s.c. in next loop, turn. *3d row:* Ch. 7, s.c. in center of second loop, ch. 8, s.c. in last s.c. of same loop, turn. *4th row:* 11 s.c. in first loop, 6 s.c. in next loop, turn. *5th row:* Ch. 7, s.c. in second loop, turn. *6th row:* 12 s.c. in first loop, 6 s.c. in each unfinished loop, turn. *7th row:* S.c. in each stitch around wing, fasten to body, turn. *8th row:* 5 s.c., p. around upper and lower part of wing, missing 5 st. at angle, fasten into body with sl.st., 4 s.c. to top of head. **Feeler:** Ch. 15, skip 2 st. of ch., (thread over hook, pull loop through third stitch) 3 times, thread over and pull through all stitches on hook, 20 s.c. over ch., fasten into head and repeat for second feeler, 4 s.c. down head and repeat for right wing. This completes the medallion.

Edge: Make a chain the length required, allowing a little extra, skip first st., * 1 s.c. in 9 st., ch. 5, drop loop, insert hook in fourth s.c. and pull loop through, 4 s.c., p., 4 s.c. in the loop made, 5 s.c. in foundation ch., p., and repeat from *.



Chafing Dish Apron with Crocheted Bunny Motifs and Edge No. 467

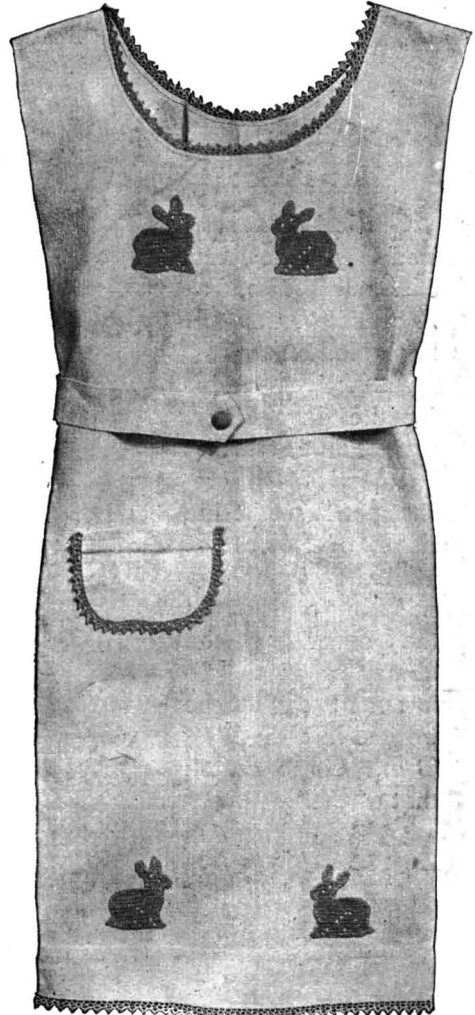
The girl who is given to entertaining her friends with Welsh rarebit parties will be interested in this pretty and very appropriate apron. It is made of linen crash, and the effective bunny motifs, edge and button are crocheted in dark blue Corticelli Mercerized Cordonnet. For a 40-inch apron (length from shoulder), take $1\frac{3}{8}$ yards of the crash and on one end make a $2\frac{1}{2}$ -inch hem. Fold the crash about 17 inches from the opposite end and cut a 12-inch circle for the neck and finish with a narrow hem. Plait the back into a 2-inch wide belt, allowing sufficient length to the belt to fasten, loosely, in front. Stitch the bunnies in place as shown in illustration, cut material from underneath and turn the raw edges.

Materials: Corticelli Mercerized Cordonnet, Art. 66, Size 50, one ball of Blue No. 215; steel hook No. 11; $1\frac{3}{8}$ yards of 17-inch linen crash and a $\frac{3}{8}$ -inch wooden button mold.

Edge: Ch. 8, d.c. in 6th st. from hook, ch. 2, d.c. in same st., ch. 1, skip 1, d.c. in last st., ch. 4, turn. *2d row:* D.c., 2 ch., 1 d.c. under 2 ch. of last row, ch. 5, turn. *3d row:* D.c., 2 ch., d.c. under 2 ch., ch. 1, d.c. in 3d of 4 ch. of last row, ch. 4, turn. Repeat 2d and 3d rows for length required. Finish bottom of edge with 3 s.c., p., 3 s.c. in each 5 ch. loop, and 3 s.c. over side of d.c. between loops.

Bunny Motif: Ch. 39, skip first 3 st. (for 1st d.c.), 15 d.c., ch. 2, skip 2, 10 d.c., 1 open mesh, 7 d.c., turn. *2d row:* Slip stitch to 4th d.c., 7 d.c., 1 open mesh, 10 d.c., 1 op., 19 d.c. (the last 6 d.c. are made by working 1 d.t. in base of last d.c., then 5 d.t., working each d.t. in base of preceding d.t.—see instructions for filet crochet, page 3), turn. *3d row:* Sl.st. to 4th d.c., 34 d.c., ch. 5, turn. *4th row:* Skip first 3 st. of chain, 12 d.c., 1 open mesh, 19 d.c., ch. 5, turn. *5th row:* Skip first 3 st. of chain, 18 d.c., 1 open mesh, 19 d.c. (the last 3 d.c. are added, as in 2d row), turn. *6th row:* 22 d.c., 2 open mesh, 13 d.c., turn. *7th row:* 40 d.c., turn. *8th row:* 37 d.c., turn. *9th row:* Sl.st. to 4th d.c., 19 d.c., sl.st. over next 2 st., 10 d.c., ch. 8, turn. *10th row:* Skip first 3 st. of chain, 15 d.c., ch. 5, turn. *11th row:* Skip first 3 st. of chain, 9 d.c., 1 open mesh, 7 d.c., turn. *12th row:* Sl.st. to 4th d.c., 10 d.c., 1 open mesh, 7 d.c. (the last 3 d.c. are added, as in 2d row), ch. 5, turn. *13th row:* Skip first 3 st. of chain, 6 d.c., turn. *14th row:* 7 d.c., turn. *15th row:* 4 d.c., fasten off. *16th row:* Fasten thread into 7th st. from beginning of 12th row, 7 d.c., turn. *17th row:* 7 d.c., turn. *18th row:* 7 d.c., turn. *19th row:* 4 d.c., makes 1 s.c. in each stitch around bunny, fasten off.

Button. Ch. 2, 6 s.c. in first st., then 2 s.c. in each stitch around, continue working around, increasing enough so that work will lie flat, until large enough to cover mold, then decrease until back of mold is covered.



Chafing Dish Apron No. 467