

FREE DISTRIBUTION ONLY. NOT FOR SALE

Antique Pattern Library

For more information, please see our website at: <http://www.antiquepatternlibrary.org>

This is a scan of an antique book that is, to the best of our knowledge, in the public domain. The scan itself has been edited for readability, and is licensed under the **Creative Commons** Attribution-NonCommercial-ShareAlike License. To view a copy of this license, visit <http://creativecommons.org/licenses/by-nc-sa/2.5/> or send a letter to Creative Commons, 559 Nathan Abbott Way, Stanford, California 94305, USA.

You may share copies or printouts of this scan freely. You may not sell copies or printouts.

Antique Pattern Library is a project of New Media Arts, Inc. <http://www.newmediaarts.org>, a nonprofit organization tax exempt under IRC 501(c)(3). Donations may be tax deductible, depending on your tax status and tax jurisdiction.

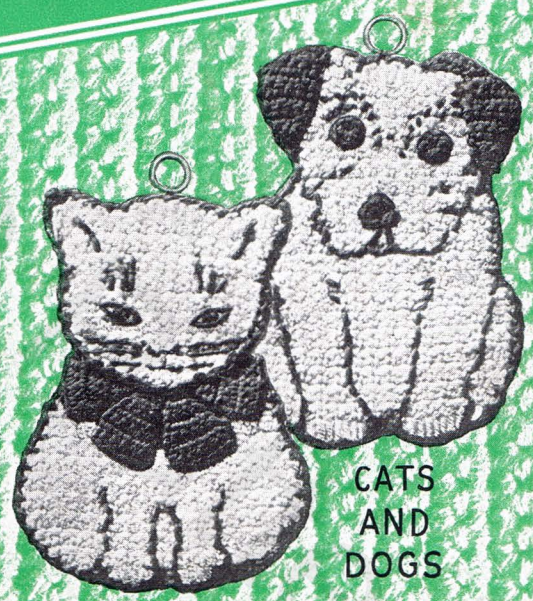
Donated by

Adrienne Kattke, edited by Judith Adele 2014

40 Hot Pot Holders and other gadgets



GLASS JACKETS



CATS AND DOGS



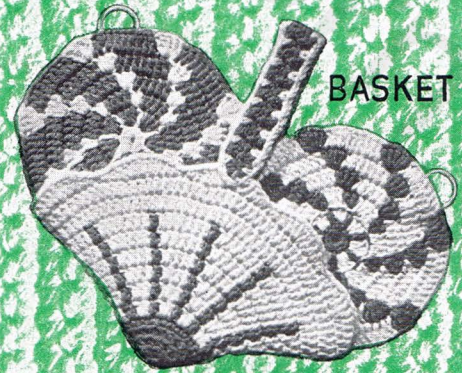
LITTLE HEN



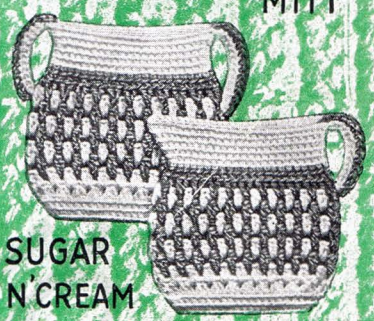
OVEN MITT



SCOTTIE



BASKET

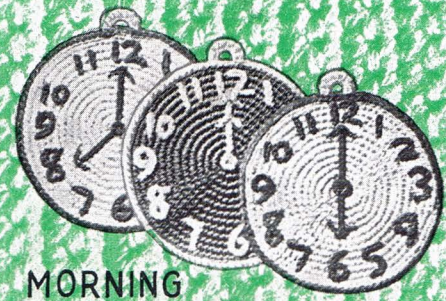


SUGAR N' CREAM

No. 9307
PH 930
10 CENTS



BIB

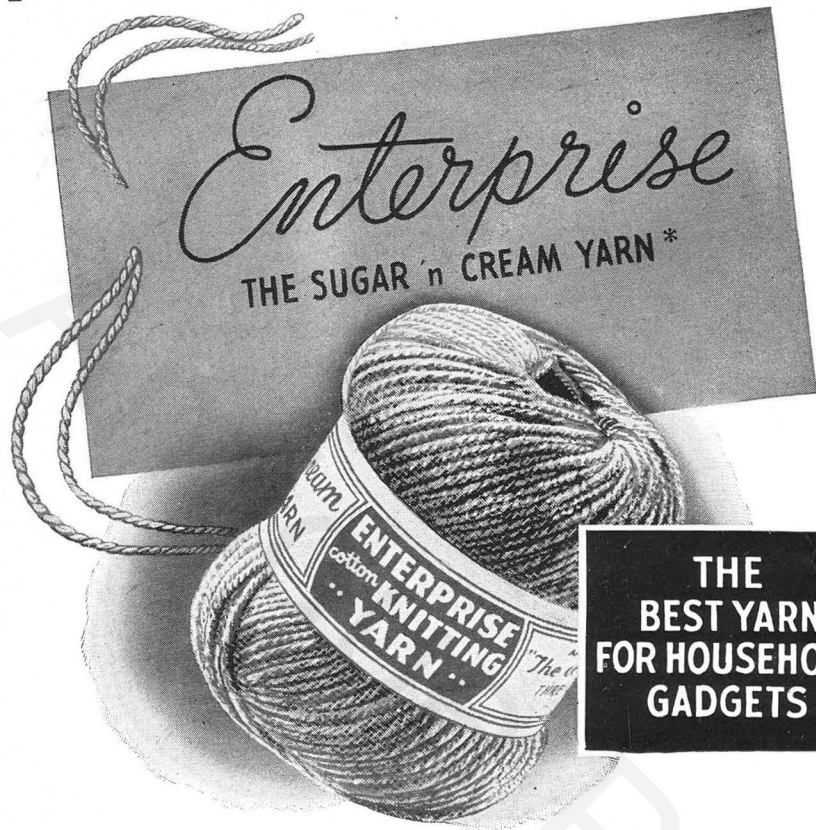


MORNING NOON AND NIGHT



POPPY

TO CROCHET WITH ENTERPRISE YARN



**THE
BEST YARN
FOR HOUSEHOLD
GADGETS**

When Enterprise Yarn was introduced in the Sugar 'n Cream Kits for Hot Pot Holders, we could not guess that thousands of requests would come for instructions for the designs. They came from all over the country—even from foreign lands—"I want the Funny Faces" or "Send me the Poppy Holders" to add to my collection—"They are the most novel I have ever seen" and "The nicest hot pads I have ever used" are a few of the comments in letters from everywhere. So we present them in this book; with several new Holders and other gadgets that space did not permit using previously.

Enterprise Yarn is the ideal material for these gadgets—the holders will give more protection—coasters and glass muffs absorb more condensed moisture—mats and rugs wear longer and look better whether on table or floor. Whether you crochet for gifts—for personal use—for bazaars—or to sell, you'll find these designs meet with approval wherever they are shown.



ENTERPRISE COTTON KNITTING YARN has met with universal approval since it was first introduced.

It's a smooth, yet soft and fluffy yarn—it makes soft, yet sturdy rugs that lay flat—don't curl—hot pot holders and plate mats thick enough to keep off the heat—baby things that can be washed and boiled to sterilize—numerous other household gadgets.

It works up fast—saves time in crocheting things for gifts, bazaars and personal use.

SUGGESTIONS

NEEDLES: The designs in this book are to be worked with a No. 1 Steel Crochet Hook unless otherwise marked. When crocheting, the main requirement of a hook is that it be of a size that will pick up the yarn without splitting it. Some find quite a variation in the size of the piece as the needle size is changed. Use the size that gives you the dimensions wanted in the easiest manner.

FINISHING (OR BLOCKING): All crocheted pieces will be more beautiful if pressed or blocked before using or joining. These gadgets of Enterprise Yarn may be pressed with a hot iron. Pin them in true shape, face down on a heavily padded board—use several pins along each edge and pin each point or corner. Edges that are to be joined should match in length; if squares, and several are to be joined, all edges should be the same. Press first with a wet cloth and hot iron, then through a dry cloth until perfectly dry. The improved appearance will justify this extra care. Hard to press shapes like the Glass Muffs or Jackets can be dried on the glasses each time they are laundered.

STARCHING: Mats for table use and some of the coasters and glass muffs can be improved and the finished piece will stay fresh longer, if stiffened with starch (or sugar). The starch should be heavy if the piece is to be dipped and completely starched. On flat surfaces like the roll rim coasters and table mats, make the starch extra heavy and rub into the wrong side.

HANGERS: Various ingenious ways of hanging these Hot Pot Holders have been devised. Favored are the plain small bone or plastic rings sold in most stores, either in white, or colors to match the trim. Loops as on the "Funny Faces, Clocks or Lattice Holders" may be crocheted on any design. Either the rings or crocheted loops should be placed to hang each piece in its natural position—either on a corner or center of the top.

RACKS: The value of a pair or set of holders, made for a gift, or to sell is increased by the addition of a matching crocheted rack to hang them on. The complete set, wrapped as a gift, is an acceptable item for showers—more useful than many ready made gifts. The racks pictured may be used with any of these designs—2 or 3 of the smallest size cup hooks will be needed—they are screwed through the crochet piece into a cardboard (or wood veneer) foundation cut to fit and placed inside or behind the work.

LINING AND PADDING: Many holders and mats will be nicer and increased in value by lining and padding. Single squares like the Poppy—figures like the Hen, etc., will hold their shape better and give added protection. Use a piece of flannel or old blanket—after pressing, cut to fit and lay on back of holder. Then cut a small piece of muslin and sew over padding with tiny neat stitches all around the edge.

HOBBY COLLECTIONS: Have you a hobby collection of Hot Pot Holders? What could be more useful—many from this book are included in several collections that we have heard of. Collectors like the unusual designs you'll see throughout these pages. Start a collection; it will excite the admiration of all your friends.

ABBREVIATIONS

Ch—Chain	Sl st—Slip Stitch
Dc—Double Crochet	Sp—Space
Hdc—Half Double Crochet	St—Stitch
Lsc—Long Single Crochet	Sts—Stitches
P—Picot	Tog—Together
Ps—Puff Stitch	Tr—Treble
Sk—Skip	Inc—Increase
Sc—Single Crochet	Dec—Decrease

LITTLE HEN

A little hen to "set" upon
the handle of hottest pots
and pans • you'll "hatch"
no burned fingers with this
nifty holder for protection.



MATERIALS: 80 yds. of White Enterprise Yarn and about 30 yds. of color to match the kitchen for the trim, for each hen.

BODY: With White ch 33, 32 sc in ch.

ROW 2: Ch 1, 32 sc.

ROW 3: Ch 1, sc in 31 sc (a dec of 1 st at tail).

ROW 4: Ch 1, sk 1, sc in 30 sts.

Repeat Rows 3 and 4 for 10 rows in all (24 sc in Row 10).

ROW 11 through 16: Dec 1 sc every other row at front and every row at tail, (15 sc in Row 16).

ROWS 17 and 18: Ch 1, sk last sc, sc in 12 (dec of 2 sts end of each row).

ROW 19: Ch 1, sk 1 sc, sc in 7. This completes one side of body. Fasten off. Join White to first st (of 32 sts) and at front of body, work 32 sc and make second side.

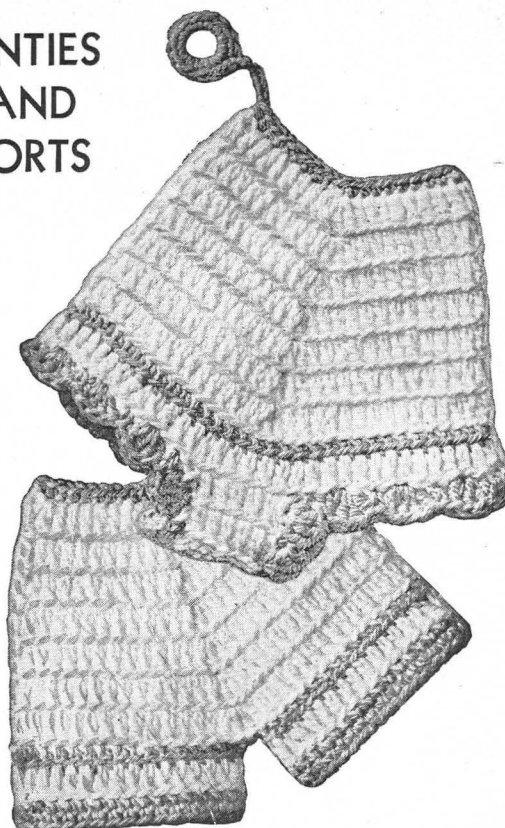
EDGE: With color, sc in front end of Row 1 of body, (ch 1, sc bet next 2 rows) repeat around. Sl st to first sc.

ROW 2: Ch 1, and work sc over each ch-1 of previous row with ch 1 bet sc. Inc of ch 1, sc in same st where needed. Steam and press body. For increased protection, pad body with flannel and line.

HEAD: Make 2—With White ch 12, 11 sc on ch. Ch 1, sk last sc, sc in 10 sc. Ch 1, sk last sc, sc in 9 sc. Ch 1, sc in last 9. Ch 2, sk 1 st of ch, sc in 10 sts. Ch 1, 10 sc. Ch 2, sk 1 st, 11 sc. Ch 1, sk 1, sc in 10 sc. Ch 2, sk 1 st, 11 sc. Ch 1, sk 1, sc in 10. Ch 2, sl st in last 3 sc, sc in 7 sc. Fasten off.

Sew together at sides and around top and stuff slightly. Sew to first 11 sts on each side at front of body.

COMB: With color, sl st to fourth st from point of bill, sl st in next, (sc, hdc, dc) in 3 sts, 2 dc in 2, dc in end of next 2 rows down back of head, dc, sc, in next 2. Fasten off. Sew bone ring to comb and embroider eye as illustrated.

PANTIES
AND
SHORTS

A Hot Pot Holder design that will cause
bilarious outbursts at bridal showers or parties.
A double holder for better protection.

MATERIALS: A ball of Enterprise Yarn in white with 30—35 yds. of color for a set.

SHORTS: With white, ch 38 (to measure 7 in.). Sl st to first st to join. Ch 3, dc in 8 sts, 3 dc in next, dc in next 18, 3 dc in next, dc in next 9, sl st to ch-3. (Work in back loops of sts.)

ROWS 2 THROUGH 7. Ch 3, dc in each dc, 3 dc in center dc of each 3-dc group. Sl st to ch-3. Fasten off.

LEG: With color, sc in ch 3, (in back loops of sts) sc in next 15 dc, skip center dc of 3-dc group, turn, skip center dc of 3-dc group on opposite side of holder, sc in next 17 dc, sl st to first sc. Fasten off.

ROW 2: With white, dc in each sc around (32 dc). Fasten off.

EDGE: With color, sc in back loops of sts around, sl st to first sc. Ch 1, (in both loops) sc in each sc around. Sl st to ch 1. Fasten off. Repeat for other leg.

TOP BAND: Fold Holder to exact center. With color work from side, 19 sc across through back and front at same time to close.

HANGER: Ch 6, cover small bone ring with sc. Fasten off. Or sew bone ring to corner of each.

PANTIES: Repeat through Row 7 of shorts. Fasten off.

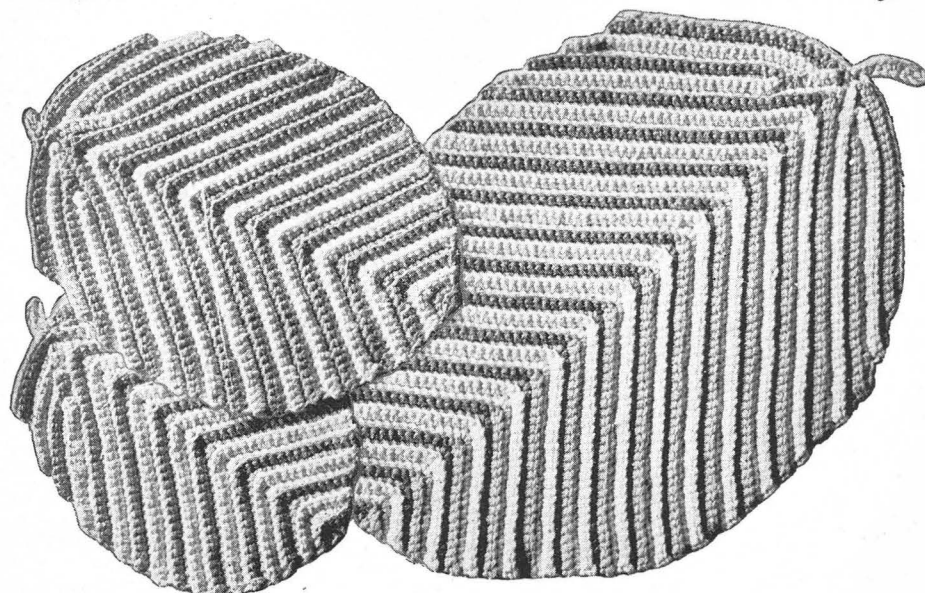
ROW 8: With color, sc in back loop of each st around (66 sc).

ROW 9: With white, dc in 66 sc around, sl st to ch-3. Fasten off.

CROTCH: Join thread to back loop of 14th dc of previous row (counting ch-3 as 1 dc), ch 3, dc in next 6 dc. Fasten off.

ROW 2: Join again to ch-3, ch 3, dc in next 6 dc. Fasten off. Repeat Rows 1 and 2 in exact center on opposite side of holder. Turn inside out and sew crotch together.

EDGE: With color, sc in ch-3, (sk 1 dc, 4 dc in next, sk 1, sc in next) 9 shells around. Fasten off and repeat on other leg. Make top band as on shorts.



Paddle on page 17 is a design that can be used to crochet several different gadgets.
This hot pot holder, hot plate and platter mat are examples of its versatility.

Red
White and Blue
Gadgets to
Crochet

COLONIAL COTTAGES

Picture No. 1

A pair of these cute cottages makes an attractive gift. The roof is red,—blue for the door, windows and flower boxes with posies in red, all on a white background. Any of the Pot Holder Racks shown will add to the finished appearance.

MATERIALS: A ball of White will more than make a pair (be enough for a rack, too)—for any of these red, white and blue holders. About 15 yards each of Red and Blue for trim. Colonial Cottages will also need a skein of green six strand cotton.

ROOF: With White, ch 26, sc in second st from hook, (ch 1, sc in next second st) 12 times.
ROW 2: Ch 1, turn, 2 sc in last sc, (ch 1, sc in next sc) repeated across, 1 more sc in end sc.
ROW 3: Ch 1, turn, sc in last sc, (ch 1, sc in next sc) repeated across. Repeat Rows 2 and 3 three times. Fasten off.

Join Red to starting st with 2 sc, (sc in 2 loops of next ch st) repeated across, with 2 sc in end st, sc in each row to next corner, 2 sc in corner: (4 hdc in next, sl st in next) 9 times, 4 hdc in next, 2 sc in corner sc, sc in each row to corner, sl st in first sc. Fasten off.

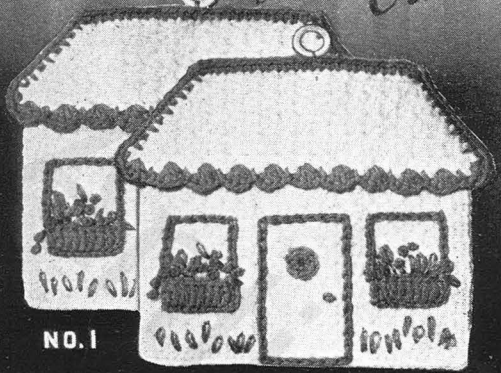
WALL: With White, ch 38, sc in second st from hook, (ch 1, sc in next second st) 18 times. Ch 1, turn, sc in last sc, (ch 1, sc in next sc) 18 times. Repeat this row 16 times (total of 18 rows), 2 more sc in end sc, sc in each row to corner, 3 sc in corner, (sc in 2 loops of next ch st) repeated across, 3 sc in corner, sc in each row to corner. Fasten off. Lap scallop edge of roof over top of wall and sew together.

DOOR: With single strand of Blue threaded to a sharp needle, embroider row of chain stitches outlining door, 1 1/4" wide and 2 5/8" high. Make French knot for door handle.

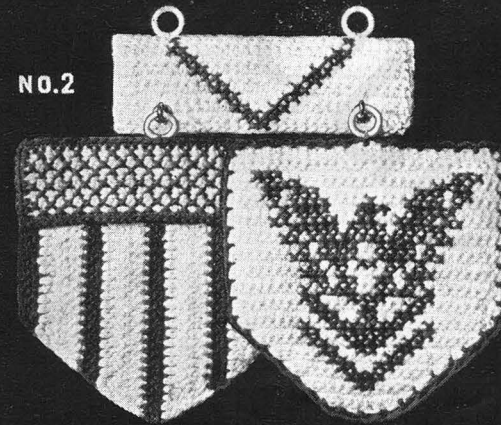
WICKET: With Blue, ch 2, 7 sc in starting st, sl st in first sc and fasten off. Sew to center of top half of door.

WINDOWS—FLOWER BOX: With Blue, ch 12, skip last 4 sts, dc in 8 sts. Fasten off. Sew on wall midway from door to one end, 1" up from bottom edge. Embroider window frame with Blue chain sts from corner of box, up even with top of door, across and down to opposite corner. Repeat on other side. Following illustration and using single strand of Red embroider flowers in each window box, making some of French knots and others of Lazy Daisy sts. Make stems and Lazy Daisy st leaves of 6 strands of Green floss. Work long Lazy Daisy st across base of wall in Green for plants.

Steam and press on back, and line with muslin.



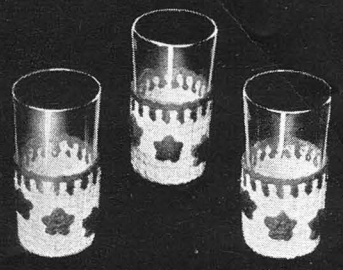
NO. 1



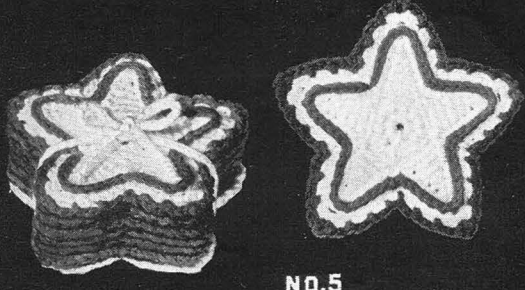
NO. 2



NO. 3



NO. 4



NO. 5

EMBLEMS

Picture No. 2

Use these reproductions of national emblems, on a VICTORY "V" rack for kitchen decoration, as well as useful Hot Pot Holders. The top of the shield is cross stitched on the crocheted background.

Four small bone rings and 2 smallest size cup hooks will be needed.

SHIELD: Top—With White, ch 31, 30 sc on chain. (Ch 1, turn, 30 sc) 6 times. Fasten off. With Blue, make sc around edge, putting 3 sc in each corner. Fasten off.

With Blue—single strand—in a dull-pointed needle, make cross st on second st of top White row and in every second st across.

In Row 2, make a cross st in first st and in every other st across. Continue, alternating cross sts, until 7 rows are covered.

BASE: With Red, ch 11, 10 sc on ch, ch 1, turn, 2 sc in last sc, sc in 9 sc. Draw White through the 2 loops of final sc, drop Red, but do not cut, ch 3, turn, and working over starting end of White, make dc in last 10 sc, 3 dc in end sc, ch 4, turn, 3 dc in last dc, dc in next 12. Draw up Red through last 2 loops of final dc, drop White but do not cut, ch 1, turn, sc in 15 dc, sc in end 4-ch, ch 1, turn, 2 sc in last sc, sc in 15 sc.

Draw up White and join, ch 3, turn, dc in last 16 sc, 3 dc in end sc, ch 4, turn, 2 dc in last dc, dc in 18 dc.

Join Red, ch 1, turn, sc in last 20 dc, sc in end 4-ch, ch 1, turn, sc in 21 sc.

Join White, ch 3, turn, dc in 18 sc, dc in next 3 sc, holding the last loop of each dc on hook, thread over and pull through all loops at once (a cluster), ch 4, turn, (dc in cluster and in next 2 dc) made into a cluster, dc in 16 dc.

Join Red, ch 1, turn, sc in 17 dc, ch 1, turn, skip last sc, sc in 16 sc.

Join White, ch 3, turn, dc in 12 sc, (dc in 4 sc) made into a cluster, ch 4, turn, (dc in cluster and in next 2 dc) made into a cluster, dc in 10 dc.

Join Red, fasten off White, ch 1, turn, sc in 11 dc, ch 1, turn, skip last sc, sc in 10 sc. Fasten off.

Lap edge of Top over Base and sew together.

EAGLE: With White, ch 30, 29 sc on chain. (Ch 1, turn, 29 sc) 18 times (total of 19 rows). Ch 1, turn, skip last sc, sc in each sc to second from end, sl st in end sc. (Ch 2, turn, skip sl st and last sc, sc in each sc to second from end, sl st in end) 10 times.

Ch 2, turn, skip sl st and last sc, sl st in next sc, sc in next 3 sc, sl st in next. Fasten off.

Join Red to top corner, (ch 1, sl st in next second st) repeated around. Fasten off.

Following diagram, embroider eagle in cross st, using yarn threaded to a dull-pointed needle. With Red, make a short st for beak and a French knot for eye, then work the chevrons in Red.

"V" RACK: With White, ch 31, 30 sc on chain. (Ch 1, turn, 30 sc) 9 times. Fasten off. Following diagram, embroider "V" in cross st.

Steam and press 3 pieces on back. Pad holders with flannel, then line. Sew bone ring to center-top of each. Line Rack with muslin, leave one end open. Cut a heavy piece of cardboard (or 2 of lighter weight) to fit; slip inside, between crocheted rack and muslin, and sew end to close. Screw cup hooks 3/4-inch from each end into and through crochet and cardboard, and sew rings to top of Rack, directly above hooks.

Red, White and Blue is the color scheme used for the gadgets pictured above.

FANS HOT POT HOLDERS

Picture No. 3

Using Fans for the motif for these Red, White and Blue Holders is appropriate • they keep fingers cool when lifting hot pots and pans.

In addition to the yarn, 2 bone rings will be needed.

TOP: With Red, make 3 sc on ring. Ch 1, turn, sc in last sc, 3 sc in next, sc in next. Ch 1, turn, sc in last 2 sc, 3 sc in next, sc in 2 sc. Cut Red 2" long.

Draw White through the 2 loops of final sc, turn and working over Red end and starting end of White, sc in 3 sc, 3 sc in next sc, sc in 3 sc.

Ch 1, turn, sc in 2 sc, 2 sc in next, sc in 3 sc, 2 sc in next, sc in 2 sc.

Ch 1, turn, sc in 5 sc, 3 sc in next, sc in 5 sc.

Cut White, join Blue, turn, sc in 4 sc, 2 sc in next, sc in 3 sc, 2 sc in next, sc in 4 sc.

Ch 1, turn, sc in 7 sc, 3 sc in next, sc in 7 sc.

Ch 1, turn, (sc in 5 sc, 2 sc in next) twice, sc in 5 sc. Fasten off.

With White, ch 24, sl st in first sc of last row, ch 1, turn, sk last st of ch, sc in next, (ch 1, sc in next second ch st) 11 times.

*Ch 1, turn, sc in back loop of last sc, (ch 1, sc in back loop of next sc) 11 times, ch 1, sl st in next sc on Top (one rib completed).

Ch 1, turn, and working in back loops, sc in next sc, (ch 1, sc in next sc) 11 times. Repeat from * to end of Top (18 ribs). Fasten off.

EDGE: With Red, make 1 sc in starting st of White (at corner), (ch 2, sc between next 2 ribs) 18 times. Fasten off.

Join White to first Red sc, (ch 2, sc in next sc) 18 times. Fasten off.

Join Blue to first sc, (ch 3, sl st in next sc) 18 times. Fasten off.

Steam and press on back. Pad with a piece of flannel and line with muslin for extra protection, if desired. Make a second holder.

STAR SPANGLED GLASS JACKETS

Picture No. 4

In patriotic colors, with crocheted stars sewn to the sides, these glass jackets are in keeping with the times. At the luncheon or bridge table, they prevent dripping from chilled glasses, and protect the table.

A ball of White for 4 Jackets—20 yards of Red and Blue for trim.

BASE: With White, ch 2, 8 sc in starting st. In back loops, sl st in first sc, ch 1, sc in same st, (2 sc in next sc) 7 times, sl st in first 1-ch and fasten off.

ROW 3: With Blue, sc in 1 sc, (ch 1, sc in next sc) 15 times, ch 1, sl st in first sc. Fasten off.

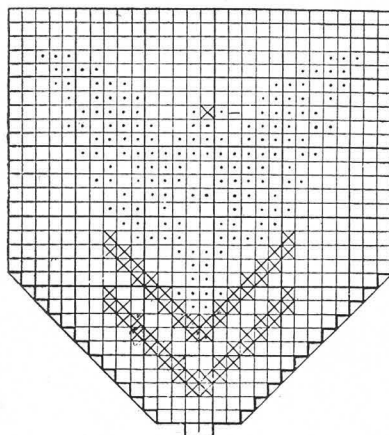
ROW 4: With White, sc in any 1-ch space, (ch 1, sc in next 1-ch space) 15 times, ch 1, sl st in first sc. Fasten off. Repeat this row in Red.

TOP: With White, ch 16, sc in second st from hook, (ch 1, sc in next second st) 7 times.

ROW 2: Ch 1, turn, sc in last sc, (ch 1, sc in next sc) 7 times. Repeat this row about 34 times or until band is a tight fit around glass. Fasten off. Lap starting end over edge of final row and sew together.

EDGE: With Blue, sc between any 2 ribs, (ch 1, sc between next 2 ribs) repeated around, ch 1, sl st in first sc. Fasten off. Repeat Row 4 of Base around. Repeat it again in Red, making 2-chs between sc. Whip edge of Base to lower edge of Top.

STARS: With Blue, ch 6, sl st in fifth st from hook, (ch 4, sl st in same st) 4 times. Fasten off. Make 3 for each jacket, half red and half blue and sew to jacket in slanting row, spacing them 6 rows apart, mixing the colors as desired.

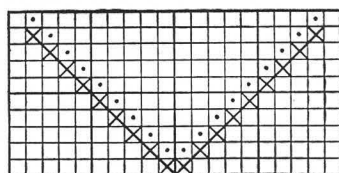


Charts for National Emblem Holders.

These charts show:
Embroidery detail for
Emblem Holders.

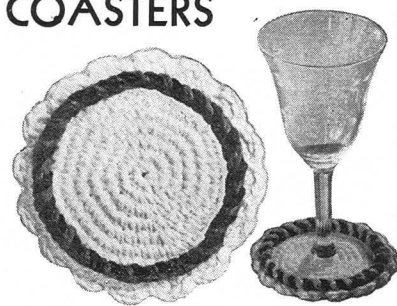
X in Red

O in Blue



ROLL RIM COASTERS

This is one of the nicest coaster designs we have found • the high roll rim keeps the glass on the coaster • made to fit the foot of a goblet, the rim clings to the glass and is raised with it. Made larger, it may be used with ice box dishes to absorb condensed moisture and keep the table dry • also will serve as an ornamental Hot Dish Mat • on the original the roll was in the patriotic combination • they will be nicer if starched to stiffen, to keep them flat.



MATERIALS: A ball of Enterprise Yarn will make 8 coasters—approx. 3 1/2" diameter for average glasses. With roll rim in two colors about 20 yards each of red and blue will finish the set.

The instructions are for coasters approx. 3 1/2" diameter (2 3/4" inside the roll rim). They may be made smaller or larger as needed for goblets or glasses—even made large enough for table use for ice cold dishes from the refrigerator or as hot plate or dish mats. See pictures on page 23. In White, ch 2, 7 sc in first st. In both loops, (2 sc in next sc) 7 times. (1 sc in next, 2 sc (an inc) in next) 7 times. (Sc in 2 sc, 2 sc (an inc) in next) 7 times. (Sc in 3 sc, 2 sc in next) 7 times. (Sc in 4 sc, 2 sc in next) 7 times. (Sc in 5 sc, 2 sc in next) 6 times, sc in 8 sc, 1 sl st. Any change in size is made before edge is added. Enlarge by adding rows to desired size. Work each inc over the inc of previous row, with sc in each sc between. Last row of sc before edge should be a number of sts divisible by 3 to work edge evenly. The edge is worked in back loops of sts around; the roll rim in remaining loops of same row.

EDGE: (Ch 1, and in back loops, dc in next 2 sc, ch 1, sl st in next sc) 16 times. Fasten off.

ROLL: Join one color to remaining loop of 1 sc on Row 7, ch 3 and drop in front. Join other color to next sc, ch 3 and drop in front. *Pick up first color, 1 sc behind second color into next sc, ch 3 and drop in front. Pick up second color, 1 sc behind first color into next sc, ch 3 and drop in front. Repeat from * around (24 loops of each color). Fasten off. To starch, dip the whole coaster in thick starch and dry, or rub heavy starch into the bottom of coaster and into roll rim—shape while drying. If to be used for the foot of a goblet, shape around the foot while wet and dry while on. Sugar instead of starch will also serve to stiffen.

STAR COASTERS

Picture No. 5

Red, White and Blue, star shaped, drip catcher coasters, for perspiring chilled glasses. They're absorbent and keep condensed moisture from soiling the table or clothes.

A ball of White Enterprise Yarn will make 8 Coasters and the case; about 20 yards each of Red and Blue for the trim.

COASTER: In White, ch 2, make first st twice usual length, 10 sc in long st. ROW 2: In both loops, sl st in first sc, ch 1, 1 sc in same st, (2 sc in next) 9 times, sl st in first 1-ch.

ROW 3: *Ch 7, sc in third st from hook, hdc in next, dc in next 2, tr in next, sl st in next fourth sc on center. Repeat from * 4 times.

ROW 4: Ch 1, * sc in next 5 sts up next point, 3 sc in loop at tip, sc in next 5, skip sl st in angle and repeat from * around. Sl st in first 1-ch, ch 1 and drop, but do not cut.

ROW 5: With Red, make slip knot on hook twice usual length, remove from hook, insert hook through both loops of any sc, catch loop and pull through, leaving knot on back, (a sl st in next sc) repeat around. Fasten off.

ROW 6: Pick up White, and working in back loops of Row 4 behind Red row, make * sc in next 5 sc, 3 sc in next (tip end), sc in next 5, skip 2 sc in angle and repeat from * around. Sl st in first 1-ch. Fasten off.

ROW 7: Join Blue with sl st through both loops of next sc, * (ch 2, sl st in next second sc) twice, ch 2, (sl st, ch 2 and sl st) in next second (tip end) sc, (ch 2, sl st in next second sc) 3 times, sl st in next sc. Repeat from * around. Fasten off. Make 4 Coasters in this color, then 4 with Row 5 in Blue and Row 7 in Red.

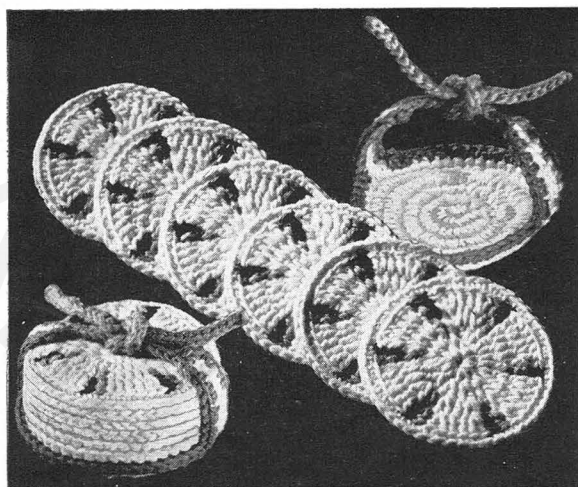
CASE: With White, ch 8, dc in starting st, (ch 4, dc in same st) 3 times, ch 4, sl st in next third ch st.

ROW 2: *Ch 7, sc in third st from hook, ch 1, dc in next second st, ch 1, tr in next second, sl st in next dc on center. Repeat from * 4 times.

ROW 3: Sl st to first 1-ch space on next point, ch 4, dc in next 1-ch space, * ch 2, (dc, ch 3 and dc) in st at tip, ch 2, skip sc, dc in next 1-ch space, ch 1, dc in next 1-ch, dc in first 1-ch space on next point, ch 1, dc in next 1-ch. Repeat from * around. Sl st in third st of first 4-ch.

ROW 4: Ch 2, sc in next dc, * ch 1, sc in next space, ch 1, sc in next dc, ch 1, (sc, ch 2 and sc) in end 3-ch, ch 1, sc in next dc, ch 1, sc in next space, ch 1, sc in next dc, ch 1, sc bet 2 dc in angle, ch 1, skip next 1-ch, sc in next. Repeat from * around. Sl st in first 2-ch, ch 40, fasten off. Join White to sc bet next second and third point, ch 14, fasten off, join White in sc bet next 2 points, ch 14, join to end of ch-14 previously made and ch 26. Fasten off.

SUPER ABSORBENT COASTERS



DRIP CATCHERS

"Drip catchers," they're called—for that last drop from perspiring chilled glasses that always lands in your lap is absorbed by these cute coasters. Use them on the table or as a liner for the glass, wood or metal kind.

MATERIALS: A ball of White and just a few yards of 4 fiesta colors for the dc sts make an interesting set. About 25 yds. of a single color will edge all the coasters. Make 6 to 8 for a set.

Coasters should measure approximately 3 to 3¼ in. in diameter. After Row 1, the dc sts are worked in the space between the sts. To attach color, retain last two loops on hook, draw new color through, working over ends, and carrying at base of previous row, and working over it to end of row, being careful not to pull or work will not be flat.

ROW 1: With White, ch 5, join to form a ring; ch 3, 11 dc in ring (12 dc), join with sl st into third st of ch-3 at beginning of row.

ROW 2: Ch 3, dc in space between first and second dc, * 2 dc in sp between next 2 dc* repeat around and sl st into ch-3 at beg. (24 dc.)

ROW 3: Ch 3, dc in first sp, * attach color, dc in next sp; attach White, 2 dc in next sp, dc in next sp, 2 dc in next sp* repeat 4 times; attach color, dc in next sp; attach White, 2 dc in next sp, dc in next sp, sl st into ch-3 at beg.

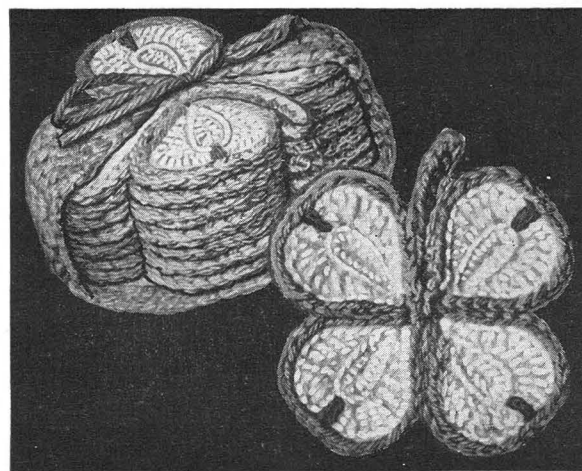
ROW 4: Ch 3, dc in first sp, * attach color, dc in next 2 sp; attach White, 2 dc in next sp, dc in each of next 2 sp, 2 dc in next sp* repeat 4 times; attach color, dc in next 2 sp; attach White, 2 dc in next sp, dc in each of next 2 sp, join with sl st in third st of ch-3 at beg. Do not fasten off, if edge is White.

EDGE—In White (or color if desired). Ch 1, sc in each st around working only into the back half of all sts in this row, join with sl st at end of row, and fasten off.

CASE—Make the same as coaster, omitting color and using White. Do not fasten off when sc edge is completed, but make the strap, as follows: Ch 3, dc in each of next 2 sc on edge, ch 3, turn.

ROW 2: 1 dc in second dc, dc in ch-3 of previous row, ch 3, turn. Repeat Row 2: Twice and then fasten off. Attach White on opposite side and make strap.

EDGE OF STRAP: Attach color on edge, at base of strap and after the strap: sc in each st to base of other strap and up side of strap to top-sc in center dc; chain 26,—for the tie—turn and sl st in each st of chain to strap, sc in each st at side of strap to base, and fasten off. Work other side to match.



GOOD LUCK

Four leaf clover shaped coasters signify good luck wherever they're used. Soft and absorbent for dining or bridge table use.

MATERIALS: A ball of White (or the desired shade) for petals;—50 yds. of color for trim for a set of 6 to 8 coasters and case.

COASTERS: With White ch 5, sk last st, sc in next 3 sts, 5 sc in end st. Then, working down opposite side of ch, make sc in next 3, 3 sc in ch at end. Working on around in back loops only, make sc in next 2 sc, hdc and dc in next sc, 3 dc in next sc, 3 dc and hdc in next, sc in next, hdc and 3 dc in next, 3 dc in next, dc and 1 hdc in next, sc in next 2 sc, sl st in next 2 sc. Cut yarn 6 in. from work, pull through loop, tight, thread to a large needle and fasten off on back of petal. Make 3 more.

EDGE: Join color to base of one petal * and working in back loops only, make sl st in each st around to sc at center-top of petal. Make a long sc over this sc, putting hook through at base—into row below. Sl st in each st around to base of petal. Sl st in base of next petal and repeat from * around all 4 petals. After final sl st in base of 4th petal, ch 12, sk last ch st, sc in remaining 11 ch sts, sc into base of each petal. Fasten off. Tack petals together, working on back with neat over-and-over stitches. Lap 1st and 4th petals partly over stem and tack in place.

CASE: With White, ch 6, dc in first st, (ch 2, dc in same st) 6 times, ch 2, sl st in next 3rd ch st.

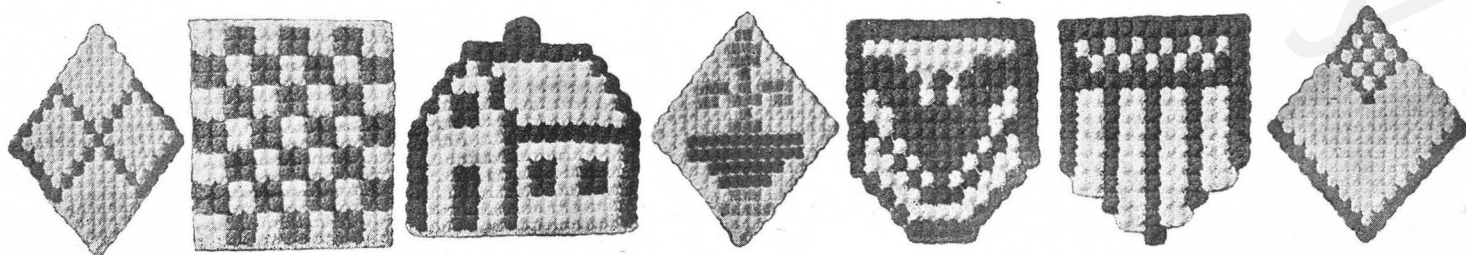
ROW 2: Ch 5, dc in same st, (ch 2, dc in next dc, ch 2, dc in same dc) 7 times, ch 2, sl st in third st of first 5-ch.

ROW 3: Ch 3, * dc in next 2-ch, ch 2, dc in same 2-ch, dc in next dc, ch 2, dc in next. Repeat from * around. Fasten final 2-ch to first 3-ch. Fasten off.

ROW 4: Join color to end of row, ch 1, sc in next dc, * 3 sc over next 2-ch, sc in next 2, 2 sc over next 2-ch, sc in next 2. Repeat from * around, sl st in first 1-ch.

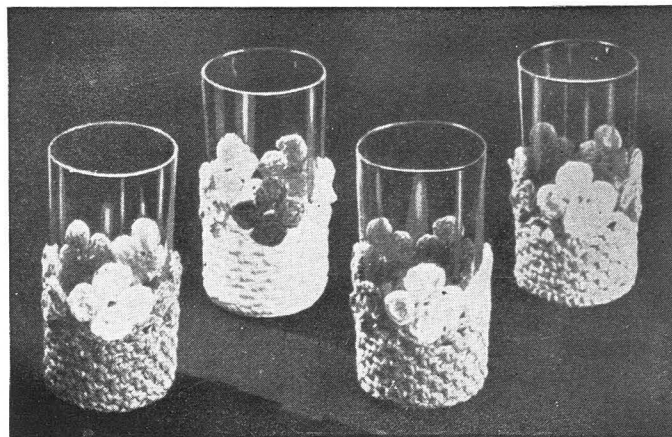
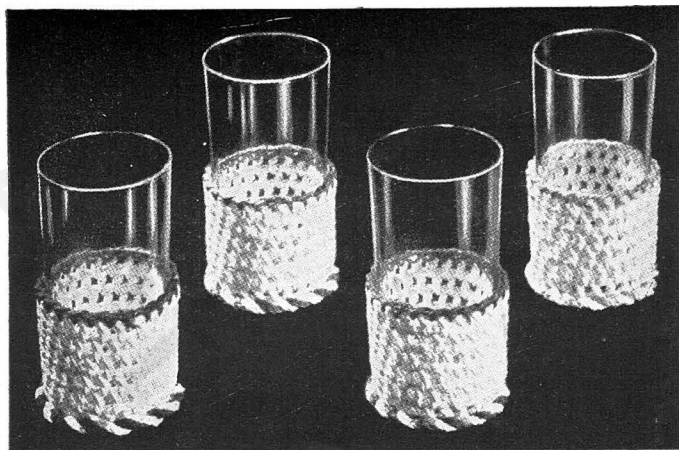
ROW 5: Ch 1, and working in back loops, sc in next 2 sc, * 3 sc in next (corner) sc, sc in next 8 sc. Repeat from * around. Sl st in first 1-ch, sl st in next 4 sc.

TABS: ** Ch 4, dc in back loop of next second st, (ch 1, dc in next second sc) 4 times.* Ch 4, turn, dc in next dc, (ch 1, dc in next) 3 times, ch 1, dc in second st of end 4-ch. Repeat from * twice. Ch 3, turn, dc in next dc, (ch 1, dc in next) twice, ch 1, dc in next dc, holding the last 2 loops on hook, dc in second st of end 4-ch, holding the last loop on hook, thread over and pull through all loops on hook at once. Ch 3, turn, dc in next dc, ch 1, dc in next, holding last 2 loops on hook, dc in next, holding last loop on hook, thread over and pull through all loops at once. Ch 2, turn, dc in next, ch 28 and fasten off. Repeat from ** on opposite side of base for second tab. Steam and press. Pile Coasters on Case and tie tabs over the top.



These cute holders are crocheted in Puff Stitch—directions on page 18.

GLASS MUFFS



RUFFED

PASTELS: Make a set with one or two of each in 4 colors to match pastel dishes.

FIESTA: Make all in White with ruffs in 4 fiesta shades.

BASE: Ch 8, sl st to form a ring, ch 1, 11 sc in ring, sl st in 1-ch.

ROW 2: Ch 1 for a sc, sc in same ch with sl st, 2 sc in back loop of each sc (24 sc). Sl st in first 1-ch.

ROW 3: Ch 1, sc in same ch with sl st (sc in next sc, 2 sc in next) repeat around (36 sc). Sl st in first 1-ch.

ROW 4: Ch 1, sc in same ch, (sc in next 2 sc, 2 sc in next sc) repeat around (48 sc). Sl st in first 1-ch.

SIDES: Ch 4, dc in back loop of next second sc, (ch 1, dc in next second sc) repeated around. Ch 1, sl st in third st of first 4-ch.

ROW 2: Sl st under next 1-ch, ch 4, dc in next 1-ch sp, (ch 1, dc in next 1-ch sp) repeated around, ch 1, sl st in third st of first 4-ch. Repeat this row 4 times. Fasten off.

ROW 6: Join color (suggestions below) to one 1-ch sp (ch 2, sl st under next 1-ch sp) repeated around. Fasten off.

"RUFFS": At base of Muff—A series of chains arranged around the base of the Muff, that have the appearance of a rope to hold it together.

Arrangement of colors: For "Pastels":

- 1st Muff—Ivory Base. Row 6, Green. Ruff—Green and Tearose.
- 2nd Muff—Green Base. Row 6, Ivory. Ruff—Ivory and Blue.
- 3rd Muff—Tearose Base. Row 6, Blue. Ruff—Blue and Ivory.
- 4th Muff—Blue Base. Row 6, Tearose. Ruff—Tearose and Green.

For "Fiesta"—Row 6 on each muff is to be done in a different color—ruffs to be in the same color, alternating with White.

ROW 1: Join first color to front loop in last row of sc on base, ch 5 and drop. Join second color to front loop of next second sc, ch 5 and drop in front of work. * Pick up first color, sc in front loop of next second sc (behind second color ch), ch 5 and drop in front. Repeat from * around. Be careful when each color is picked up in turn, to keep ch's straight, and untwisted. Join final first color loop with a sl st to base of original first color loop. Join final second color loop with a sl st to base of original second color loop (behind original first color loop). Fasten off ends.

GLASS MUFFS—put your glasses in them—like your hand in a muff, to absorb moisture from perspiring chilled glasses and stop dripping and rings on the cloth or bridge table. Varied uses will demand color combinations to suit the occasion.

At the bridge table, where iced drinks are being refilled and returned, each a different color permits ready identification.

At the luncheon table all may be in a single color to match the dishes—or if the dishes are those mixed sets of Pastel or Fiesta ware each muff a different color.

At more formal table settings, with a White cloth, plain White, either with or without color trim are suitable.

Suggestions are given for a set of Pastels or Fiesta color combinations in both designs. For Pastels use Lt. Blue, Lt. Green, Ivory and Tearose.

For Fiesta use Red, Blue, Med. Green and Gold with White.

A ball of each of the colors will make several sets of muffs.

Sets of 4 or 8 muffs on the glasses, in a gift box, make a lovely shower gift.

POSY

PASTELS: Make a set with one or two of each in 4 colors to match pastel dishes.

FIESTA: Make all in White with posy's in 4 fiesta shades.

BASE: Ch 8, sl st to form a ring. Ch 1, 11 sc in ring, sl st in 1-ch.

ROW 2: Ch 1, sc in same ch with sl st, 2 sc in back loop of each sc (24 sc). Sl st in first 1-ch.

ROW 3: Ch 1, sc in same ch with sl st, (sc in next sc, 2 sc in next) repeated around (36 sc). Sl st to first 1-ch.

ROW 4: Ch 1, sc in same ch with sl st (sc in next 2 sc, 2 sc in next) repeat around (48 sc). Sl st in first 1-ch. (If smaller or larger glasses are to be used—make to fit base of glass.)

SIDES: Ch 1, sc in back loop of each sc (47 sc). Sl st in first 1-ch, (ch 2, sc in next third sc) 15 times (ch 2, sc in next ch-2 loop) repeated around until 6 rows are completed. * sc in next ch-2 loop, ch 2, dc in next ch-2, ch 4, dc in same sp, ch 2, sc in next ch-2 loop. Repeated from * 4 times. Fasten off.

FLOWERS: Pastels—make five of each, of the four colors, for each four glass muffs. "Fiesta": Make four of each color and four of White. (Ch 4, 3 dc in first st of 4-ch, ch 3, sl st in same st) 4 times, sl st at base of first petal (starting st).

Cut thread 6" from work, pull through loop, tightly, thread to a large sewing needle and fasten securely on back of first petal.

Arrangement on Muffs: Sort out the colored posy's and muffs, as follows:

- 1st Muff—Ivory Base—2 Green—1 ea. of 3 other colors.
- 2nd Muff—Green Base—2 Ivory—1 ea. of 3 other colors.
- 3rd Muff—Tearose Base—2 Blue—1 ea. of 3 other colors.
- 4th Muff—Blue Base—2 Tearose—1 ea. of 3 other colors.

On the White bases for "Fiesta" Muffs, arrange the colored posy's in the same way—1 of each color and 1 of White.

Arrange the five posy's as desired, to fit around the top of each muff. Tack five together into a straight row. Use strong sewing thread, and work from the back with neat over and over stitches, going through the second dc of a petal on each side of flower. Steam and press and tack ends, to form a ring. With both wrong-side out, sew a petal of each flower between scallops on top of muff. Tack the scallops up to joined petals of flowers.

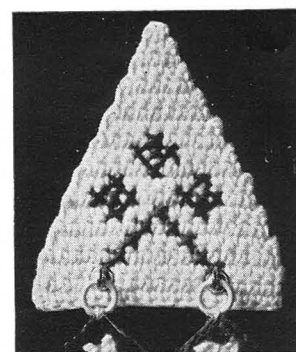
CROSS STITCHED SQUARES



POTS AND PANS or any of these cross stitch designs are to be embroidered on 5 1/2" crocheted squares. The charts show symbols for a patriotic combination but may be in any desired shades.

MATERIALS: About 80 yards white Enterprise Yarn and 15 yards each of Red and Blue for a pair, the edge of one holder red, the other blue.

A rack that may be used for any pair of holders is pictured at right. Just a few yards of Enterprise Yarn, a bone ring and a pair of the smallest size cup hooks—it will add style and appearance to your set, as a gift.



THE HOLDERS:

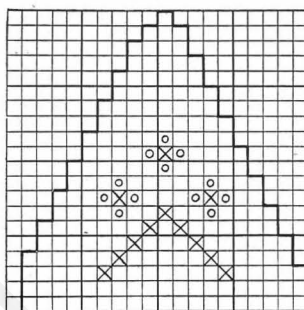
With white, ch 26, 25 sc on chain.

Row 2: Ch 1, turn, 1 sc in each sc. Repeat this row 23 times, making 25 rows in all and forming a square. Fasten off.

Join color to last sc, * (ch 1, 1 sc in center of next rib) repeated to next corner, (ch 1, 1 sc in next second st) repeated to next corner. Repeat from *. Fasten off.

Select cross stitch design desired and embroider on holder. For best results when embroidering, twist yarn slightly before pulling through crocheted background for a neat stitch. Each square of the pattern is a sc stitch across the holder and a row the other way.

Steam and press holders into true squares and sew bone ring to corner.



⊗ BLUE ⊙ RED

THE RACK:

(Size approx. 3 3/4 inches by 3 3/4 inches.) With white ch 19, 18 sc on ch. * Ch 1, turn, 1 sc thru both loops of each sc, repeat from * once, ch 1, turn, sk 1 st, 1 sc in next 17, ch 1, turn, sk 1, 1 sc in next 16. Continue working same as last row, decreasing 1 st at beginning of each row until one st remains on hook (20 rows in all). Fasten off. Work the cross stitch design (see Chart). Line Rack with muslin cut slightly smaller than the Rack, stitching to top sides only.

Cut a heavy piece of cardboard to fit the crocheted rack and insert between front and lining, then stitch lining to front.

Sew bone ring to top. Screw 2 small cup hooks through crocheted rack into cardboard 1/2 inch from side and 1 inch from bottom on each side and hang holder on each hook.

DONKEY	DUTCH MILL	ELEPHANT	CAT
KETTLE	RABBIT	GIRL	DOG
CHICKEN	SQUIRREL	SQUIRREL	SQUIRREL



A trim pair of holders with matching rack • the designs in fiesta colors embroidered on the crocheted squares.

MATERIALS: A ball of White for the holders and rack and about 10 yds. each of Red, Blue, Green and Gold for the edge and design.

RACK: Approx. 7 in. long x 1 3/4 in. high. With White, ch 39, 38 sc on ch.

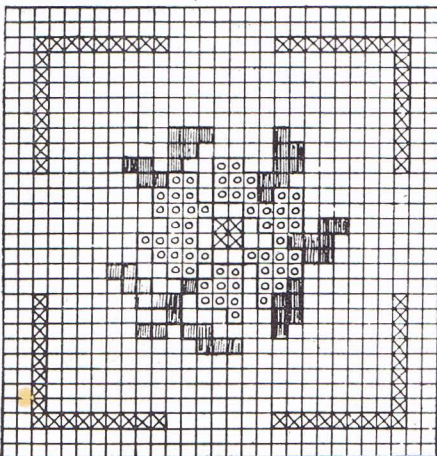
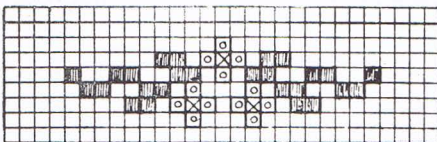
ROW 2: Ch 1, turn, sc through both loops of each sc. Repeat until 20 rows (10 ribs) wide. Cut 15 in. from work and pull through loop, tight. Join Blue to corner and working across short end, (ch 1, sl st in center of next rib) repeated to next corner. Fasten off. Make edge across other end. Embroider design in cross stitch in center of band (see chart below). Then, using the end of thread, sew the sides of band together, forming a tube. Fold this flat, with design in exact center of front.

POT HOLDERS: Approx. 6 in. square. With White, ch 31, 30 sc on ch.

ROW 2: Ch 1, turn, sc in each sc. Repeat this row 28 times, making 30 rows (15 ribs), forming a square. Fasten off. Join Blue to last sc, * (ch 1, sl st in center of next rib) repeated to next corner, (ch 1, sl st in next second) repeated to next corner. Repeat from *. Fasten off. Embroider design in cross stitch (see chart).

Cut a strip of heavy cardboard to fit, and slip it inside Rack. Sew bone rings to top edge, 1/2 in. from each end. Screw the smallest size cup hooks through crochet into cardboard, one at each end—about 1 in. from end. Sew a bone ring to top corner of each holder.

If desired, the back of the holders may be lined for appearance, and for a more tailored effect. Cut a piece of flannel just smaller than the holders; place on back—then line with muslin.



☐ YELLOW ☐ RED ■ GREEN



Use these crocheted squares for Table Mats or doilies, stove top mats or rugs. They are firm and heavy • will protect from hottest plates and dishes • are interesting to do and some novel combinations will result if assorted designs are used in the same mat.

The Spring Blossoms holders shown above are 5 3/4 in. squares—will need a ball of White Enterprise Yarn and 15 yds. each of Red and Blue for a pair.

AS A HOT POT HOLDER

In White, ch 27, 26 sc on chain. (Ch 1, turn, 26 sc) for a total of 25 rows. Fasten off.

EDGE: Turn and join Blue with sc, ch 1 and sc in last sc, * (ch 1, sc in next second sc) 12 times, ch 1, (sc, ch 1 and sc) in corner sc, (ch 1, sc in center of next rib) 12 times, ch 1, * (sc, ch 1 and sc) in corner st. Repeat from * to *. Sl st in first sc. Fasten off.

ROW 2: Turn and join White with sc, ch 1 and sc in 1-ch at 1 corner, * (ch 1, sc in next 1-ch space) across, ch 1, (sc, ch 1 and sc) in corner 1-ch. Repeat from * around. Ch 1, sl st in first sc. Fasten off. Follow chart below for flowers in cross stitch. Steam and press—pad with flannel and line—sew bone ring to corner.

AS A TABLE MAT

Here are four of the Spring Blossoms Pot Holders joined for a stove top mat and fringed for appearance. For a four square mat 2 balls of White and about 35 yds. each of Red and Blue will be needed.

Make 4 squares as for Holders. With sc-rows lengthwise of doily, sew tog. into a large square, going through one loop of each st and matching center corners.

FRINGE: Wind yarn around a 2" cardboard. Cut at one edge. Tie 2 strands in each 1-ch sp across ends—fold in center, insert hook from underneath through 1-ch, catch loop and pull through, slip ends through loop and pull tight. Tie Blue in corner 1-ch and in next 1-ch, (White in next 3 sp, Red in next 2, White in next 3, Blue in next 2) 3 times and trim.

AS A RUG

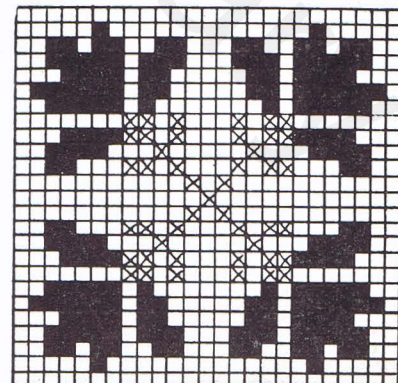
The rug pictured on page 23 is the Spring Blossoms design, worked in Brown with Green and two shades of Orange for the cross stitch decoration. A firm, durable rug is the result—size approx. 27 x 39".

As pictured, 15 squares will require 8 balls Dk. Brown—2 Med. Green and 1 each of Orange and Dk. Orange. Will be beautiful in any desired color combination. The animal and bird designs, on an adjacent page, would make a variety of interesting squares for a child's room rug.

As for Holder, make a square in Dk. Brown. Work first row of edge in Green, next row in Dk. Brown, then repeat row 2 of Edge in Orange and Dk. Brown. Embroider seven st in center-tip of flowers in Orange,—balance in Dk. Orange. Leaves and stems in Green. Make 15 blocks and with sc-rows crosswise of rug, sew tog. into strips, going through one loop of each st, then join strips, matching all corners.

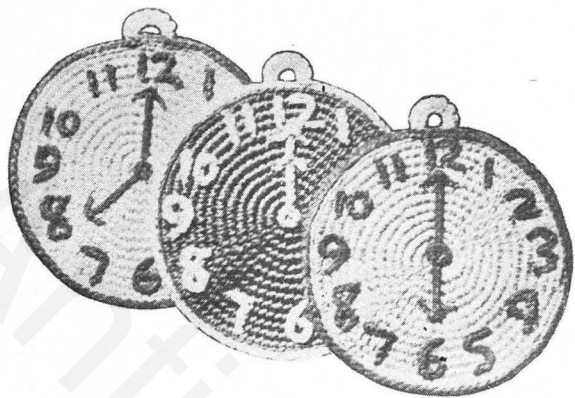
BORDER: With wrong-side-up, join Dk. Brown with sc, ch 1 and sc in one corner 1-ch, * (ch 1, sc in next 1-ch sp) 16 times, (ch 1, sc) twice across joining of blocks. Repeat from * around, putting (sc, ch 1 and sc) in each corner. Sl st in first sc. Fasten off. Repeat second row of Edge of Holder in Dk. Brown, Orange, Dk. Brown, Green, and 8 times in Dk. Brown. Fasten off.

FRINGE: Wind Dk. Brown around a 3" cardboard, cut at one edge and tie 2 strands in each 1-ch space around rug. Stretch and pin face down in true shape on large, padded board or table, to steam and press.



■ RED ☐ BLUE

MORN'G NOON 'N NITE



These Clocks, each with hands set at different hours, make a holder for each meal of the day. Hang the set on a rack like that on Page 9—for a lovely gift. As pictured, the set has two with White faces; the other is colored.

Crochet firmly to get a heavy holder. Diameter $5\frac{3}{4}$ to 6 in. The directions are for White faces—for the colored face reverse colors.

ROUND 1: With White ch 5, sl st to form a ring, ch 1.

ROUND 2: 9 sc in ring. Work around center.

ROUND 3: 2 sc in each st around (20 sc).

ROUND 4: Sc in next 2 sc, 2 sc in next.

Repeat around. Continue with sc, inc when necessary, to keep flat (do not over inc or will pucker) until 13 rounds are made. Fasten off.

EDGE: Join color to White face in back loop of st, sl st in back loop of each st around. Fasten off. Numerals and hands are crocheted and sewed in place (as illustrated). Colored numbers are made for White faces or White for colored faces. All may be embroidered if desired.

The hands and numerals are simple chains, crocheted to the proper length—for No. 1, ch 5—No. 2, ch 12—No. 3, ch 16—No. 4, ch 15—No. 5, ch 12—No. 6, ch 12—No. 7, ch 9—No. 8, ch 16—No. 9, ch 13—No. 0, ch 8. For hands, 6 and 8 o'clock, ch 20. Noon, ch 14. Pointer on end of hands, ch 6. Applique in place as shown with hands pointing to hours desired. Ch 6 and join to form ring to sew to center of clock over inner end of hands. Crochet a loop or sew a bone ring above 12 on each.

THE DUCK

Makes a heavy holder—decorative, too. For the crocheted circles, follow clock instructions above.

HEAD: With White, follow above instructions for the clocks through Round 8,—to measure $3\frac{1}{2}$ in. Make two.

For Body, follow the same instructions through Round 12,—to measure $5\frac{1}{2}$ in. Make two.

WING: With color, ch 10, 9 sc on ch, ch 1, 9 sc on other side of ch. Work in back loop of sts to complete wing.

ROW 2: Ch 2, turn, sk first st, sc in 10 sc, 3 sc in ch 1, sc in next 9 sts, ch 2, turn.

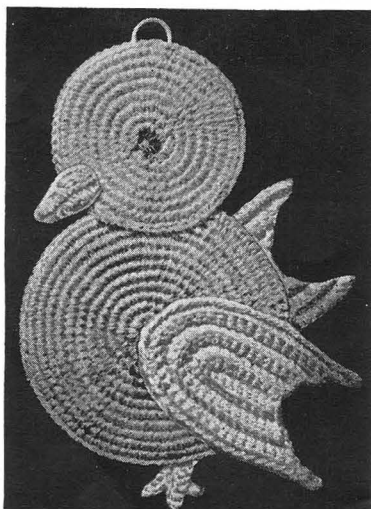
ROW 3: Sk first st, 10 sc, 2 sc in each of next 3 sts, 9 sc, 2 sc in end sc, ch 2, turn.

ROW 4: Sk 1 st, sc in 12 sts, (2 sc in next, sc in next) 3 times, 9 sc, 2 sc in end sc, ch 2, turn.

ROW 5: Sc in 14 sts, 2 sc in next, sc in 5, 2 sc in next, 13 sc to end of row. Ch 3, turn.

ROW 6: Sc in 16 sts, (2 sc in next st, sc in next) 5 times, sc in 12 sts, 2 more sc in end st. Fasten off. Make two.

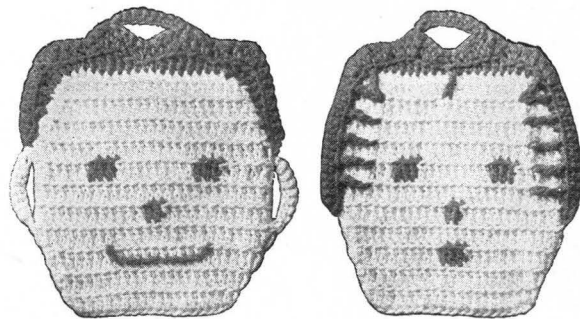
BILL: With color, ch 8, sk first st of ch, sc in next 4 sts, sl st in 3 sts, ch 1, sl st in first 3 sts on other side of ch, sc in next 4 sc, 2 sc in next 5 sc, 4 sl sts. Fasten off. Make two.



(Continued at bottom of column at right.)

FUNNY FACES

Any of these holder sets can be made from a ball of White Enterprise Yarn and approximately 50 yds. of color matching the kitchen decorations.



A different pair of Hot Pot Holders to watch over your hot pots and pans—the faces are double to give added protection at the stove or table.

THE LADY: Starts at bottom—with White ch 20, 19 sc on ch. 18 sc on other side of ch. Continue around this center—the holder is double.

ROUND 1: 2 dc in skipped st of ch (an inc), taking the back thread of st, make dc in each st for 18 sts, 2 dc in next (an inc), dc in each st for 19 sts.

ROUND 2: 3 dc in next st (an inc of 2 sts), dc in 19 sts, 3 dc in next (inc of 2), dc in 20 sts.

ROUND 3: An inc of 2 sts, 9 dc, drawing color through last 2 loops of 9th st, 3 dc in color, drawing White through last 2 loops of 3rd st, continue with White, make 9 dc, inc 2 sts, (22 dc).

ROUND 4: An inc of 2 sts, 23 dc, inc of 2 sts, (24 dc). There are now 53 sts. No more inc from this point.

ROUND 5: 12 dc, 2 dc in color, continue around in White.

ROUND 6: Dc for a complete round.

ROUND 7: 5 dc, 3 dc in color, 9 in White, 3 in color, break colored thread; continue around in White.

ROUND 8: Dc for a complete round.

ROUNDS 9, 10 and 11: Make 2 dec on each side of head each round. (To dec: yo, insert needle in st and draw up a loop, yo, draw through 2 loops, yo, insert needle in next st and draw up a loop, yo, draw through 2 loops, yo, draw through 3 loops.) Break thread.

HAIR: With face toward you fasten colored thread with sl st 7 rows from top, work along side toward forehead, making 3 sc * 1 tr c fastened around fourth st from side (this tr c is at right angles to the dc of face), 2 sc, repeat from * 4 times (to forehead), tr c in same st as previous tr c; taking front and back with same st, work across forehead, making * 3 sc, 3 dc, 3 sc, tr c around st 1 row down, repeat from * across head; work down right side of head to correspond with left side, ch 1. Turn. Make sc in top of each st of previous row for 16 sts, 2 dc in next st, dc, tr c, 2 dc, sc, dc, 2 tr c in next st, 3 dc, 3 sc, 3 dc, ch 8 and fasten in top of previous tr c with sl st, turn and make sc in each st along ch, continue making left side same as right.

THE MAN: Follow directions for lady, omitting the 3 colored dc in Round 3, and making 3 colored dc in Round 5.

Embroider mouth in outline st 2 rows below nose as in picture.

HAIR: With face toward you fasten colored thread with sl st 4 rows from top, work toward forehead making 2 sc, 3 dc, 2 tr c; taking front and back with same st work across forehead, making 2 dc in same st, 2 sc, 2 dc, tr c, 2 dc, 2 sc; make right side of hair to correspond with left side. Ch 1, turn. 7 sc to forehead, 2 dc in next st, 2 dc, sc, 2 dc, tr c, 3 dc, 2 sc, 3 dc, ch 8 and fasten to previous tr c with sl st, turn and make sc in each st along ch; continue, making left side same as right. Break thread.

EARS: Fasten White at end of hair, ch 8 and fasten 4 rows below, turn, make sc in each st along ch. Break thread. Make left ear same as right.

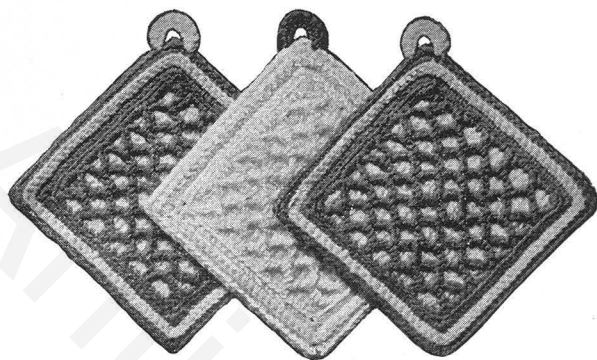
FOOT: (One only.) ROW 1: With color, ch 10, sk first st of ch, sl st in next 9 sts. Ch 1, turn.

ROW 2: Sl st in 3rd st from hook, sl st in back loops of next 5 sts, ch 3, sk 1 st, sl st in back loops of next 9 sts, ch 1, turn.

ROW 3: Same as Row 2. Fasten off.

Sew wings in place on outside of each body piece (see picture for position). Sew foot on inside bottom of one side of body. Sew body pieces together. Embroider eyes with color on center of both head pieces. Sew together, but leave opening at bottom—insert body and sew remaining sts of head to body on each side. Place two pieces of bill together and sew to each side of head.

LATTICE



Lattice is one of those interesting combinations of simple stitches with the effect obtained by sewing two pieces of crochet together. The two tone holders shown are done as a single piece • the simple instructions may be enlarged for rugs, table mats, chair seats, etc. Lattice forms an air space beneath hot dishes and pans to protect the table • makes a pretty effect in any color combination.

MATERIALS: A ball of White and 50 yds. of color will make a set of 3.

BACKGROUND: With White, ch 23, sk last 3 sts, dc in 20 sts.

ROW 2: Ch 3, turn, dc through both loops of each dc of last row. Drop White, but do not cut.

LATTICE: 1st COL. ROW: Join color to other half of first st of 23 ch (at base of first row of dc), (ch 5, sc in other half of next 4th st of original ch) 5 times.

2nd COL. ROW: Ch 7, turn, sc in center of last 5 ch loop, (ch 5, sc in next loop) 4 times, ch 2, a tr down into same st where first color row started.

3rd COL. ROW: Sl st through front loop of end White dc. Turn, (ch 5, sk next 3 dc, insert hook through back loop of next dc and under color 5 ch loop, catch thread and pull through for a sc) 5 times.

4th COL. ROW: Ch 7, turn, sc in last 5 ch loop, (ch 5, sc in next loop) 4 times, ch 2, a tr down into tr at end of 2nd color row below. Drop color.

ROW 3 (of background): Pick up White, ch 3, turn, dc in back loop of each dc of last White row, working behind color loops.

ROW 4: Repeat Row 2.

Repeat 3rd and 4th rows of Lattice and Rows 3 and 2 of Background three times, making a total of 10 rows of dc in White and 10 of color loops. Fasten off. Background should now be approx. 3 3/4 in. square.

BORDER—ROW 1: Join color to starting st of original 23 ch, ch 1, 2 sc in same corner st, and work around making 19 sc on each side with 3 sc at each corner. Fasten off.

ROW 2: Work in back loops of sts, sc in each st, with 3 sc in each corner st.

ROW 3: Turn, with White, sc in back loop of each sc around with 3 sc in each corner st. Fasten off.

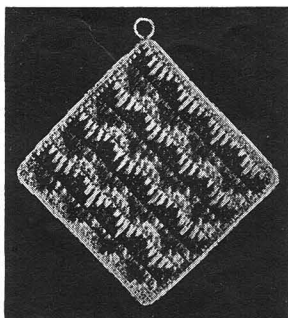
ROW 4: Turn, with color, work same as Row 3. Fasten off.

RICK RACK

Novel stripes in an interesting combination of stitches, that's so simple to do. Crochet it to any desired size, from a Hot Pot Holder to a rug.

Try it for chair seats and table mats to complete a kitchen ensemble that will excite comment from all who see it.

Make alternating pattern rows of white and color in your favorite kitchen combination.



With white chain 26, 25 sc on ch, ch 1, turn and work 2 more rows of sc. Drop this color.

Join color, turn, 1 sc, * a long sc over next sc, inserting hook at base of sc into row below, a long sc over next sc, inserting hook two rows below, a long sc over next sc, inserting hook 3 rows below, a long sc over next sc 2 rows below, a long sc over next sc 1 row below, 1 sc in next sc. * Repeat from * to * 3 more times.

This is called a pattern row. Make 7 more pattern rows. After completing 8 pattern rows, make one row of sc around entire holder in white.

DIAMONDS AND HEARTS



THE DIAMOND

These appropriate holders for gifts and showers are quick to make.

MATERIALS: As for Lattice for a set of 3.

With White, ch 2, 8 sc in starting ch, ch 1 and drop at back; do not cut. **ROW 2:** With color, sc in sc, (ch 1, sc in next sc) 7 times, ch 1, sl st in first sc, (ch 1 and drop at back; do not cut).

ROW 3: Draw up White, sc in l-ch space, * ch 1, (sc, ch 1, sc) in next l-ch, ch 1, sc in next l-ch. Repeat from * twice, ch 1, (sc, ch 1, sc) in next l-ch (12 sc), ch 1, sl st to first sc, ch 1 and drop at back.

ROW 4: Draw up color, * sc in l-ch space, ch 1, sc in next l-ch, ch 1, (sc, ch 1, sc) in next corner l-ch, ch 1, repeat from * 3 times, sl st in first sc. Drop color. Continue in same manner with ch 1 and sc in each l-ch space, with ch 1, (sc, ch 1, sc) in each corner. Make Rows 5, 7, 9 in White. Rows 6 and 8 in color.

ROW 10: With White, turn, sc in last l-ch, * (ch 1, sc in next) repeated to corner, ch 1, (sc, ch 1, sc) in corner. Repeat from * around, ch 1, sl st in first sc. Repeat this row 6 times. Fasten off.

EMBROIDERY: In each corner (on Row 13), make a 6 petal flower in Lazy Daisy st; make a long st from flower down to colored corner, couching it down midway. At base of stem make 2 Lazy Daisy sts (for leaves).

EDGE: Cut a strand of color and 2 of White 72" long. Twist tightly, double and twist again. Fasten free ends to one corner of holder, then tack around edge, sewing in front loops of sc. Tack ends on back of holder.

THE HEART

With White, ch 2, making first st twice usual length, (sc, hdc, 2 dc, 7 tr, 2 dc, hdc and sc) in long st.

ROW 2: Ch 2, turn, sk sc, sc in next st, 2 sc in next, (2 hdc in next) twice, (2 dc in next) twice, 5 dc in next, (2 dc in next) twice, (2 hdc in next) twice, 2 sc in next, sc in next, sl st in next.

ROW 3: Ch 1, turn, sk sl st, (sc in 2 sts, 2 sc in next) 3 times, hdc in 2 sts, dc in 2 sts, 5 dc in next st, dc in 2 sts, hdc in 2 sts (2 sc in next st, sc in 2 sts) 3 times.

ROW 4: Ch 1, turn, sk last sc, sc in next 2 sc, 2 hdc in next, (dc in next, 2 dc in next) 7 times, 3 dc in next, (2 dc in next, 1 dc in next) 7 times, 2 hdc in next, sc in 2 sts, sl st in next.

ROW 5: Ch 1, turn, sk sl st, (sc in 5 sc, 2 sc in next) 3 times, hdc in 3 sts, dc in 5 sts, 5 dc in next st, dc in 5 sts, hdc in 3 sts, (2 sc in next st, sc in 5 sts) 3 times.

ROW 6: Ch 1, turn, sk last sc, sc in 2 sts, hdc in 2 sts, (2 dc in next, dc in 2 sts) 3 times, dc in 17 sts, 3 dc in next, dc in 19 sts, (2 dc in next, dc in 2 sts) twice, 2 dc in next, hdc in 2 sts, sc in 2 sts, sl st in next.

ROW 7: Ch 2, turn, sk sl st and last sc, sc in 3 sts, 2 sc in next, hdc in 2 sts, (2 dc in next, dc in 3 sts) 5 times, dc in 7 sts, 5 dc in next, dc in 10 sts, (2 dc in next, dc in 3 sts) 4 times, 2 dc in next, hdc in next 2 sts, 2 sc in next, sc around top of work to start of this row. Fasten off.

EDGE: Join color, (ch 2, sl st in next second st) repeated around. Fasten off.

DECORATION: With color, ch 4, 3 sc on chain. * (Ch 1, turn, 3 sc) 3 times, ch 1, turn, sk last sc, sc in 2 sc, (ch 1, turn, 2 sc) twice, ch 1, turn, sk last sc, sc, (ch 1, turn, sc) 5 times, (ch 1, turn, 2 sc) 3 times, ch 1, turn, sc, 2 sc in end sc. Repeat from * twice. (Ch 1, turn, 3 sc) 3 times. Fasten off.

BAND: With color, ch 7, 6 sc on chain. Fasten off. Keeping the same side of work up, form long strip into a bow, and tack band around center. Sew onto holder.



CATS AND DOGS

Not raining! but cute Hot Pot Holders that will attract attention and be serviceable too. They are to be padded and lined to cover the joining of the head and body, for added protection.

MATERIALS: A ball of White Enterprise Yarn and 30 yds. of color for a pair.

CAT—BODY: With White, ch 25, sc in second st from hook, (ch 1, sk 1, sc in next) twice, hdc in 2 sts, dc in 2, sk 1, sc in 3, sk 1, hdc, dc in 2, hdc, sk 1, sc, ch 1, sk 1, sc in next, ch 1, 2 sc in end st.

ROW 2: Ch 2, sc in last sc, (ch 1, sc in next) 3 times, (ch 1, sk 1, sc in next) 7 times, ch 1, 2 sc in end.

NOTE: The abbreviation ptn or ptna = pattern or pattern across mentioned in following rows means (ch 1, sc in next sc) to be worked between increases or decreases at end of rows. Turn to start each succeeding row.

ROW 3: Ch 2, sc in last sc, ptna, with 2 sc in end. Repeat this row 3 times.

ROW 7: Ch 1, sc in last sc, ptna. Repeat 4 times.

ROW 12: Ch 1, sc in last 2 sc, ptna to second from end, sc in end.

ROW 13: Ch 1, sk last sc, sc in next, ptn to second sc from end, sl st in end. Repeat Rows 7 and 13.

ROW 16: Ch 1, 2 sc in last sc, ptn to end, 2 sc in end. Repeat Rows 12, 13, 7 and 13. Fasten off.

EDGE: Work around (except across top) as Edge on Dog.

HEAD: With White, ch 14, 2 sc in second st from hook, ch 1, sk 1, sc in next, hdc in 2, dc in 3, holding last loop of each on hook, thread over and pull through all 4 loops at once (a cluster), hdc in 2, sc, ch 1, 2 sc in end st.

ROW 2: Ch 2, 2 sc in last sc, (ch 1, sc in next) twice, (ch 1, sc in next second st) 3 times. Ch 1, sc in next, ch 1, 2 sc in end.

ROW 3: Ch 2, sc in last sc, ptna.

ROW 4: Ch 1, 2 sc in last sc, ptna, 2 sc in end.

ROW 5: Ch 1, sc in last sc, ptna. Repeat 3 times.

Continued on Page 14



FLOWERS

Another holder that is different — made double to slip over Hot Pan handles like the holders for sad-irons of grandma's time. The decorations are crocheted and appliqued on the crocheted body.

MATERIALS: Each holder will use 50 yds. of background color (White or Ivory); 18-20 yds. for the flower pot and edge if in same color; 5 yds. each of Lt. Blue and Med. Green for the Flowers and stems; instructions call for colors shown with Ivory background but may be changed to your favorite combination.

SIDES: In Ivory, ch 34, sc in second st from hook, (ch 1, sc in next second st) 16 times. * Ch 1, turn, sc in last sc, (ch 1, sc in next) 16 times. Repeat from * 16 times. **POINT** — Ch 1, turn, sc in last sc, (ch 1, sc in next) 7 times, hdc in next. * Turn, skip hdc, sl st in sc, (ch 1, sc in next) across. Ch 1, turn, sc in last, (ch 1, sc in next) across to second from end, hdc in next. * Repeat from * to * twice. Turn, skip hdc, sl st in sc, ch 1, sc in next. Ch 1, turn, sc in sc. Fasten off. Join again to center sc of last full row, (ch 1, sc in next sc) 8 times. Ch 1, turn, sc in last sc, (ch 1, sc in next sc) 6 times, hdc in next. Repeat from * to * 3 times. Turn, skip hdc, sc in sc. Fasten off.

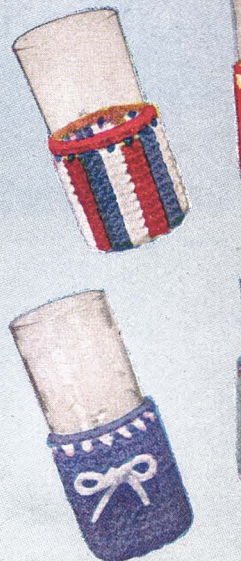
EDGE: Turn and in Red, 3 sc in one lower corner, (ch 1, sc in next second st) around, 3 sc in each corner. Fasten off.

BASKET: In Red, ch 8, 7 sc on chain. Ch 3, turn, dc in each sc, with 2 dc in end sc. Ch 3, turn, dc in each dc, with 2 dc in end 3-ch. Ch 1, turn, sl st in last, (ch 1, sl st in next) 10 times. Cut 6" long and fasten off on back. Tack on center of one side 1/2" from bottom, leaving top edge free.

LARGE FLOWER: In Ivory, ch 2, 6 sc in starting st, sl st in first sc. Fasten off. Turn, sl st in Blue in sc, * (ch 2, hdc, ch 2, sl st) in same sc, sl st in next sc. Repeat from * 5 times. Fasten off. Sew over right corner of Basket.

LEAVES: In Green, * ch 7, skip last st, (sc, hdc, 2 dc, hdc and sl st) on chain. Repeat from *. Fasten off. Sew out from top of flower.

Continued on Page 14



JACKETS

These one piece and iced drink short with square neckers, they will fit moisture from

MATERIALS: A ball of body color will make of color for trim on color on white jacket page 5, and give a varied. Instructions colored trim. The Jackets are chains 4 tacked in place.

RING: With white in ring, sl st in first sc, sl st in one st of ring, sc in next st, (ch 1, to measure approx. for taller muff, each 1/4 in.). (See pictures)

ROW 2: Ch 1, turn for succeeding rows, 12 times. Ch 1, sl complete).

ROW 3: Ch 1, turn (ch 1, sc in next sc) 3 until 16 ribs in all on Ring every four wrong side.

To make jackets with Row 2 to the ch-1 pick up color for st and loop on hook a sl st to Ring and stripe width. Join

TOP EDGE: With ribs made, (ch 2, sc Ch 2, sl st in first sc

ROW 2: Join white sc in next ch-2 sp) 1 Fasten off.



GLASSES

will fit most stand-
— be they tall or
ounded bottom cor-
and keep condensed
table and clothes.

Enterprise Yarn in the
Jackets — about 5 yds.
The stars pictured in
from the instructions on
of how the trim may be
for the white jackets with
decoration on colored
ong, tied into bow and

st in first st. Ch 1, 8 sc
en off. With white ch 26,
1, turn, sk last st of ch,
next second st) 12 times,
from center of ring;—
added to ch 26 equal
ttle Jackets on page 23.)
in back loop of sts only,
last sc, (ch 1, sc in next)
me sc on Ring (one rib

ast ch st, sc in next sc,
es. Repeat Rows 2 and
mplete, joining to next sc
Fasten off. Sew on

al stripes of color: work
e joining to the Ring,
raw through st on Ring
e time to complete the
e as above to desired
lor in same way.

work sc between first 2
en next 2 ribs) 15 times.
en off.

c in first ch-2 sp, (ch 2,
s. Ch 2, sl st in first sc.



JUGS ON A RACK

Like the traditional little brown jug, these too
will serve their purpose—padded and lined
they make lovely holders and will be attractive
in any color to match the kitchen trim. The rack
is an added touch that will make the set an
ideal gift. The same rack will serve as a stand
for a hot teapot at the table; or under hot dishes
will protect the table—omit the floral deco-
ration and books when made for a table mat.

MATERIALS: A ball of color to match the kitchen
color scheme and a ball of White (or Ivory) will
make the pair of holders and the rack;—the rack
may be used with many of the other holders shown
throughout this book;—or without the floral motif
as a hot pad at the table. 45 yds. White or Ivory
and 25 yds. color will be used for the rack.

RACK: Approximately 7" diameter. In White (or
Ivory), ch 2, 8 sc in first st. In back loops, (sl st, ch
3, 2 dc) in first sc, (3 dc in next) 7 times, sl st in
first 3-ch.

ROW 3: Ch 3, dc in same st, (2 dc in both loops
of next dc) around and join.

ROW 4: Ch 3, dc in next dc, (2 dc in next, dc in
2) around and join.

ROW 5: Ch 3, dc in next 2 dc, (2 dc in next, dc in
3) around and join.

ROW 6: Ch 3, dc in next 3 dc, (2 dc in next, dc
in 4) around and join.

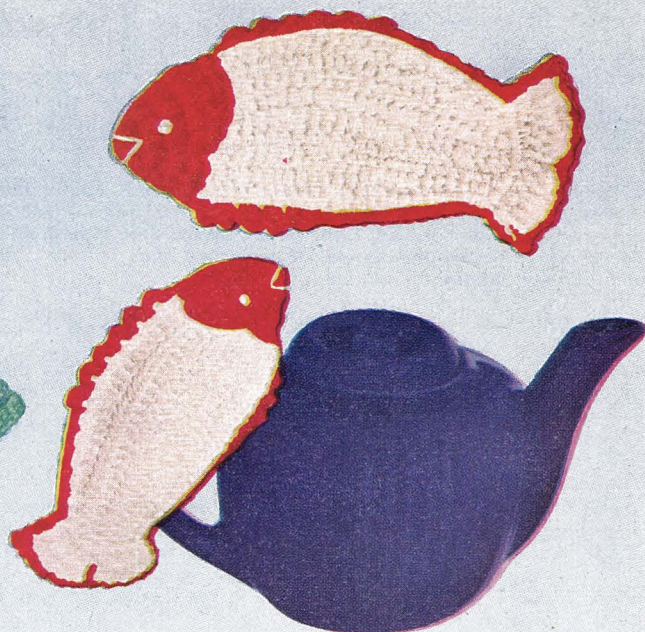
ROW 7: Ch 1, sc in each dc around. Sl st in 1-ch.
Fasten off.

ROW 8: In Color, sc in 1 sc, (a long sc over next
sc, inserting hook at base of sc into row below, sc
in next sc) around, join and fasten off.

ROW 9: In White, sc in 1 long sc, (a long sc over
next sc, sc in next long sc) around, join and fasten
off.

ROW 10: In Color, sl st in 1 sc, (ch 1, sl st in next
st) around. Fasten off.

FLOWER: In Color, * ch 4, (dc, ch 3, sl st) in
fourth st from hook. Repeat from * 4 times. Sl st
at base of first petal. Fasten off. Make a large
French Knot in center.



FISH

A small, compact holder to slip over the long
handles of hot pots and pans when it's open at
the tail • or by sewing further around the tail
to leave a smaller opening, it will hang on the
handle of hot tea pots at the table as pictured.

MATERIALS: A ball of white and approximately
35 yds. of colored Enterprise Yarn will make a pair.

TEAPOT HOLDER

HEAD: In color, ch 2, 2 sc in starting st. Ch 1,
turn, 2 sc in each sc. Ch 1, turn, 2 sc in last, sc in
next, sc in end sc. Ch 1, turn, sc in last 4, 2 sc in
next 2, 2 sc in end. Ch 1, turn, sc in last 4, 2 sc in
next, sc in 2. Ch 1, turn, sc in 2 sc, 2 sc in next,
sc in 3, 2 sc in next, sc in end. Ch 1, turn, sc in 2,
2 hdc in next, sl st, sc in next 6. Ch 1, turn, sc in
2 sc, 2 sc in next, sc in 2, sl st in next. Ch 1, turn,
sk sl st, sc, hdc, 2 dc in next, dc in 3. Fasten off.

BODY: In White, ch 29, sk last st, sc in next 4,
hdc in 5, * dc in 4, dc in 2, holding the last loop
of each of the 2 dc on hook, thread over and pull
through all 3 loops on hook at once (a Cluster).
Repeat from *. Dc in 4 sts, (dc in remaining 3)
made into a Cluster.

ROW 2: Ch 2, turn, hdc in last 3, dc in 10, hdc
in 6, sc in 4, 2 sc in end.

ROW 3: Ch 1, turn, 2 sc in last st, sc in 23, 2 sc
in end.

ROW 4: Ch 1, turn, skip last sc, sc in 26.

ROW 5: Ch 1, turn, skip last, sc in 4 sc, hdc in 6,
dc in 10, hdc in 3, sc in 1, sl st in end.

ROW 6: Ch 2, turn, skip sl st, (hdc in 5 sts, 2 hdc
in next) twice, hdc in 7, sc in 4, sl st in end.

ROW 7: Ch 1, turn, skip sl st, sc in 5, hdc in 10,
2 hdc in next, hdc in 8.

ROW 8: Ch 2, turn, hdc in last 6, dc in 4, 2 dc in
next, dc in 4, hdc in 4, sc in 5, sl st in end.

ROW 9: Ch 1, turn, skip sl st, sc in 25. Fasten off.

TAIL: In White, ch 14, skip last 4, dc in next 4,
2 dc in next, dc in 5. Ch 3, turn, dc in last 2,
2 dc in next, dc in next, hdc in next, ch 1, sl st in
next, ch 1, hdc in next, 2 dc in next, dc in next,
2 dc in next, dc in 2 sts. Fasten off. The right
side of last row of each piece is right side of front.

CATS AND DOGS—Con. from Page 12

ROW 9: Ch 1, sk last sc, sc in next, ptn 9 times, sl st in end sc. Repeat Row 4 once; Row 5 three times; and Row 4 once.

ROW 15: Ch 3, dc in last sc, 2 dc and 1 hdc in next, hdc in next, sl st in next, ch 1, sc in next, 2 hdc in next (2 dc in next) twice, 2 hdc in next, sc in next, ch 1, sl st in next, hdc in next, hdc and 2 dc in next, (dc, ch 3 and sl st) in end sc. Fasten off. Work around Edge in color. Ch 2, sl st in same dc at top of each ear.

BOW: With color, ch 2, sc in first st. Ch 1, turn, 2 sc in sc. (Ch 1, turn, sc in each sc, with 2 sc in end) for 4 rows. (Ch 1, turn, 6 sc) twice. Fasten off. Make four pieces. Sew these on top of Body, half the width of 2 upper pieces extending above Body, then lap Head slightly over top edge of Bow and Body and tack. With strand of Color, embroider eyes and Whiskers on Head, legs and body, as in illustration. Pad and line, and sew ring at top.

DOG: Starting at bottom of body—With White ch 27, sc in second st from hook, ch 1, sc in next second st, 2 hdc, 4 dc, sk 1, 4 sc, sk 1, 2 hdc, 5 dc, sk 1, sc, ch 1, sk 1, 2 sc in end st.

ROW 2: Ch 1, 2 sc in last sc, (ch 1, sc in next) twice, (ch 1, sk 1, sc in next) 9 times, ch 1, 2 sc in end sc.

See note in Cat Instructions, Row 2.

ROW 3: Ch 1, sc in last sc, ptna 14 times.

ROW 4: Ch 2, sk last sc, sc in next, ptna to second sc from end, sc in end.

ROW 5: Ch 1, sc in last sc, ptna, 2 sc in end. Repeat this row once.

ROW 7: Ch 1, sc in last sc, ptna. Repeat Row 7, then 5.

ROW 10: Ch 1, sc in last 2 sc, ptna.

ROW 11: Ch 1, sc in last sc, ptna to second sc from end, sc in end sc.

ROW 12: Ch 1, sc in last 2 sc, ptna. Repeat Rows 11 and 12.

ROW 15: Ch 1, sk last sc, sc in next, ptna to second sc from end, sl st in end.

ROW 16: Ch 2, sk sl st, sc in next 2 sc, repeat from * in Row 15.

ROW 17: Ch 1, sk sl st, 2 sc in next sc, ptna 11 times, sc in next, sl st in end. Repeat Row 12; Row 7 four times; Rows 11 and 4 once.

ROW 25: Ch 1, sk last sc, sc in next, ptna. Repeat Row 4.

ROW 27: Ch 1, 2 sc in last sc, sc in next, ptn 8 times, sc in end sc. Repeat Row 11 once; Row 7 twice.

ROW 31: Ch 1, 2 sc in last sc, ptna, 2 sc in end. Repeat Rows 7, 5, 12 and 4.

ROW 36: Ch 1, sc in last sc, ptna to second sc from end, sl st in end.

ROW 37: Ch 2, sk sl st, sl st in next sc, ch 1, (2 hdc in next) twice, sc in next sc, 2 hdc in next, 2 dc in next, 2 hdc in next, sc in next, in ptn 4 times, sc in end.

ROW 38: Ch 1, sk last sc, sc in next, ch 1, 2 hdc in next, 2 dc in next, 2 dc and 1 hdc in next, ch 1, sl st in next sc. Fasten off.

EDGE: Join Color, (ch 1, sl st in next second row or st) around. Fasten off.

LEFT EAR: With Color, ch 2, 2 sc in starting st, ch 1, sc in last dc, 2 sc in next, * (ch 1, sc in each sc with 2 sc in end sc) twice. Ch 1, sc in each sc) twice. Ch 1, sk last sc, sc in 4 sc. Ch 3, dc and hdc in last sc, sc in next, sl st in next. Fasten off.

RIGHT EAR: Repeat Left Ear to *. (Ch 1, sc in each sc. Ch 1, sc in each sc across, with 2 sc in end sc) twice. Ch 1, sk 1, sc in 4 sc. Ch 1, 3 sc and sl st. Ch 1, sl st in next sc, sc in next, 2 sc in next, ch 6, sk last ch st, 2 sc in next, sc in next 3 ch sts, sl st in next sc. Fasten off.

EYES: With Color, ch 2, 5 sc in starting st, sl st in first sc. Fasten off. Make 2.

NOSE: With Color, ch 2, (sc, hdc, 3 dc, hdc and sc) in first st. Fasten off.

Sew ears, eyes and nose in place. Following illustrations and using a single strand, embroider head and legs, using $\frac{1}{4}$ " to $\frac{1}{2}$ " back stitches. With White make a tiny stitch on right half of each eye for high light.

FLOWERS—Con. from Page 12

HALF-FLOWER: In Ivory, ch 2, 3 sc in starting st and fasten off. Turn, sl st in Blue in first sc, * (ch 2, hdc, ch 2, sl st) in same sc, sl st in next sc. Repeat from * for 3 petals. Fasten off.

STEM: In Green, ch 7, sl st in sixth from hook, ch 5, sl st in same st, ch 6, cut 6" long and pull through loop tight. Thread to needle and tack to base of flower. Tuck stem under top of Basket $\frac{1}{2}$ " from left corner and curve stem and flower around and down to left.

CENTER SPRAY: In Green, ch 13, cut 2" long, pull through loop tight and trim close. Ch 16 for second stem. Tuck under top of Basket between flowers, the 13-ch stem on left side, and curve them around to left. Using Red, trim stems with French Knots—one at end of each, 3 more along shorter stem, 4 more on other—close to under side of stems.

Make two pieces—line each piece, place back-to-back and whip top edges together. Sew ring to top left corner.

These holders on one of the racks shown elsewhere will make a lovely gift or bazaar item.

JUGS ON A RACK—Con. from Page 13

LEAVES: In Color, ch 10, (dc, ch 3, sl st) in fourth st from hook, ch 4 and make another petal, sl st at base of first petal, a ch st cross between 2 petals, ch 6 and make a petal in fourth st from hook. Fasten off. Make 3. Sew motifs at top of Rack. Steam and press on back through a cloth. Line back with muslin, fastening top half with dress snaps. Cut 2 thick cardboard circles to fit and insert in pocket. Screw a small screw eye on each side 1" from edge. Hang on wall by 2 rings 5" apart on top.

JUG: Approximately $5\frac{1}{2}$ " across— $5\frac{3}{4}$ " high; in Color, ch 30, 29 sc on ch.

ROW 2: Ch 1, turn, 1 sc in each sc. Repeat twice.

ROW 5: Draw White through loop, turn, and working over color and starting white end, sc in last sc, (a long sc over next sc, inserting hook at base of sc into row below, sc in next sc) across. Draw up color taut and through 2 loops of final sc. Cut White 3" long.

ROW 6: Ch 1, turn, and working over White end, a long sc over last sc, (sc in next, a long sc over next) 14 times. Repeat Row 2 twice. Repeat from Row 5 twice, and Rows 5 and 6 again.

ROW 19: Ch 1, turn, skip last sc, sc across to second from end, sl st in end.

ROW 20: Ch 1, turn, skip sl st, sc across. Repeat Row 19.

ROW 22: (Ch 2, turn, skip sl st and last sc, sc across to second from end, sl st in end sc) 3 times.

ROW 25: (Ch 2, turn, skip sl st and last 2 sc, sc across to third from end, sl st in next) twice.

ROW 27: Repeat Row 20 (11 sc). (Ch 1, turn, 11 sc) 3 times.

TOP: Ch 3, turn, 4 dc in last sc, dc in next 9, 3 dc in end. Ch 1, turn, 2 sc in last dc, sc in next 14, 2 sc in next, sl st in end 3-ch. Fasten off.

HANDLE: Turn and join color at base of "Top," ch 15, sl st in second color row above last white row, ch 1, turn, and cover chain closely with sc, sl st at base of "Top." Ch 1, turn, sc in each sc, sl st in next lower color row. Fasten off. Make 2 holders and hang on rack.

FISH—Con. from Page 13

Lap head over end of body and sew tog. Lap tail over small end and sew tog. Sew a white button, or make large French Knot for eye. Make two long sts for mouth. Make another side, turn over and before sewing sides together, join color to base of Tail, and working across bottom edge of body, (ch 1, sl st in next second st) 8 times, (ch 3, sl st in next 2 sts) 4 times, (ch 1, sl st in next second st) repeated to head. Fasten off. Pad with flannel, line with muslin, leaving stitches on edge free. Lay 2 halves tog, with color, whip edges of head tog, both top and bottom. Join color at base of Head and Front, and working across bottom edge of body, (ch 1, sl st in next second st) twice, (ch 3, sl st in next 2) 4 times, (ch 1, sl st in next second st) repeat to base of Tail. Hold 2 halves tog and working through both edges, * continue to corner of Tail, ch 3, sl st in same corner, * continue to center of Tail, sc down in row below.

Repeat from * to *. Continue to base of Tail, (ch 1, sl st in next second st) 5 times, (ch 3, sl st in next 2 sts) repeated across to Head. Fasten off. This leaves the bottom edge open between base of Head and Tail, to fit over teapot handle.

HOT PAN HOLDER: Make the same way, except sew Heads tog only across top. Work edge from base of Head, across bottom edge and around end of Tail to top corner, then join across top. This leaves the bottom edge open from nose around tail to top corner.

HOT POT HOLDERS IN A BASKET

A handy basket holder for holders • to hang beside the stove. Many other designs in hot pot holders will be appropriate to make a set in this basket for a nifty bridge prize.

MATERIALS: A ball of White and approx. 50 yds. of color to make the basket and 2 pinwheel holders.

BASKET: With color, ch 2, making first st twice usual size, 6 sc in this long st. Sl st in back loop of first sc.

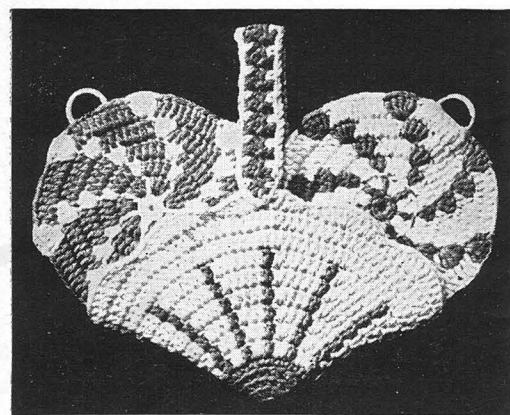
ROW 2: Ch 1, sc in same st, (2 sc in back loop of next sc) 5 times. Sl st in first 1-ch.

ROW 3: Ch 1, sc in same st, (sc in next 3 sc, 2 sc in next sc) twice, sc in 3 sc, sl st in first 1-ch.

ROW 4: Ch 1, sc in same st, (sc in next 4 sc, 2 sc in next sc) twice, sc in 4 sc, sl st in first 1-ch.

ROW 5: Ch 1, sc in same st, sc in 8 sc, 2 in next, sc in 8 sc, drop color, insert hook in first 1-ch and draw through a loop of White, ch 3. Cup this work so the right side is outside.

ROW 6: (Work this and all following rows through both loops of each st.) Working over color and starting end of White,—covering them up,—make (2 dc in next sc, dc in next) twice, * 2 dc in next, holding final 2 loops on hook. Pull up color taut, drop White and draw color through 2 loops, dc in next sc, working over White and holding final 2 loops on hook. Draw up White taut, drop color, and pull White through 2 loops. Working over color, repeat from * 4 times. (2 dc in next sc, dc in next) twice, 2 dc in next sc, sl st in first 3-ch. At all times work over color not in use.



ROW 7: Ch 3, dc in next dc, 2 in next, (dc in next 2, 2 in next) twice, join color, dc in next color dc, * join White, dc in next, 2 in next, join color, dc in next color dc. Repeat from * 3 times. Join White, dc in next, 2 in next, (dc in 2, 2 in next) twice. Sl st in first 3-ch. At all times pull up yarn taut before making joining.

ROW 8: Ch 3, dc in next 2, 2 in next, (dc in 3, 2 in next) twice, join color, dc in next color dc, * join White, dc in 2 dc, 2 in next, join color, dc in next. Repeat from * 3 times. Join White, dc in 2, 2 in next, (dc in 3, 2 in next) twice, sl st in first 3-ch.

ROW 9: Ch 3, dc in next 3, 2 in next, (dc in 4, 2 in next) twice, join color, dc in next color dc, * join White, dc in next 3, 2 in next, join color, dc. Repeat from * 3 times. Join White, dc in 3, 2 in next, (dc in 4, 2 in next) twice, sl st in first 3-ch.

ROW 10: Ch 3, dc in next 4, 2 in next, (dc in 5, 2 in next) twice, join color, dc in next color dc, * join White, dc in 4, 2 in next, join color, dc in next. Repeat from * 3 times. Join White, dc in 4, 2 in next, (dc in 5, 2 in next) twice, sl st in first 3-ch.

ROW 11: Ch 3, dc in next 5, 2 in next, (dc in 6, 2 in next dc) twice, join color, dc, * join White, dc in 5 dc, 2 in next, join color, dc. Repeat from * 3 times. Join White, dc in 5, 2 in next, (dc in 6, 2 in next) twice. Sl st in first 3-ch. Cut off color.

ROW 12: Ch 3, dc in next 6, 2 in next, (dc in 7, 2 in next) 9 times. Sl st in first 3-ch.

ROW 13: Ch 3, dc in next 7, 2 in next, (dc in 8, 2 in next) 9 times. Sl st in first 3-ch.

ROW 14: Ch 3, 2 in same 3-ch, * dc in next 2, hdc in next, sc in next, sl st in next, sc in next, hdc in next, dc in next 2, 3 in next. Repeat from * around (10 scallops). Sl st in first 3-ch. Fasten off.

HANDLE: With color, ch 5, sc in first st, (ch 4, turn, sc in last sc) repeated until there are 15 scallops on each side. Fasten off. Join White to last sc, * ch 3, sc in first scallop down side of braid, (ch 2, sc in next scallop) 14 times, ch 3, sc in next sc. Repeat from *. Fasten off. Fold Basket flat, matching scallops exactly, with color stripes on front. Place front-down on an ironing board. Lay Handle right-side-down. Steam with a wet cloth and hot iron, then press. Fold Handle and sew ends over center scallops at top of Basket.

PIN WHEEL HOLDERS

With color, ch 4, sl st to form a ring. Ch 1, 7 sc in ring, sl st in first 1-ch.
ROW 2: Ch 2, drop color, draw White through loop,—making a 3rd ch st,—and going through back loops only, make * 3 dc in next sc, join color, dc in same st, join White and repeat from * 6 times, working over color not in use. 3 dc with White in next sc. Insert hook in first 3-ch and pull color through loop on hook. At all times pull up yarn taut before making each joining. Work all following rows through both loops of sts.

ROW 3: Sl st in next dc, ch 3, dc in same st, * join White, dc in 2 dc, 2 dc in next, join color, 2 dc in next dc. Repeat from * around. Sl st in first 3-ch. Draw color through next dc and loop on hook.

ROW 4: Sl st in next dc, ch 3, 2 dc in same st, * join White, dc in next 5 dc, join color, 3 dc in next. Repeat from * around. Sl st in first 3-ch, sl st in next dc. Draw color through next dc and loop on hook.

ROW 5: Sl st in next dc, ch 3, 3 dc in same st, * join White, dc in next 7 dc, join color, 4 dc in next. Repeat from * around. Sl st in first 3-ch, sl st in next 2. Draw color through next dc and loop on hook.

ROW 6: Sl st in next dc, ch 3, 4 dc in same st, * join White, skip next dc, dc in next 5 White and 4 color dc, join color, 5 dc in next White dc. Repeat from * around. Sl st in first 3-ch. Fasten off both threads.

Make second Holder in same way, but reverse the colors, making background in color, with center circle and pin wheel in White. Steam and press. Pad back of Holders, then line with muslin.

POSY IN PUFF STITCH

With White ch 26, 25 sc on chain. Ch 1, turn.

ROW 2: Sc in last sc, * 2 dc in next, holding final loops of each dc on hook YO and pull through all loops on hook at once (1 puff stitch made) sc in next sc, pulling it down tight, letting the ps puff out on back of work which will be the right side. Repeat from * across (12 puffs).

ROW 3: Ch 1, turn, sc in last sc, (sc in next puff, sc in next sc) repeat across (25 sc).

ROW 4: Repeat Row 2, ch 1, turn.

ROW 5: Sc in last sc (sc in puff, sc in sc) repeat once. Drop White at back, to pick up in next row. Join color through final 2 loops of last sc made, work over starting end of color covering it, sc in next 15 sts. Drop color on wrong side to pick up in next row. Join another end of White (sc in next sc, sc in puff) repeat once, sc in next sc, ch 1, turn.

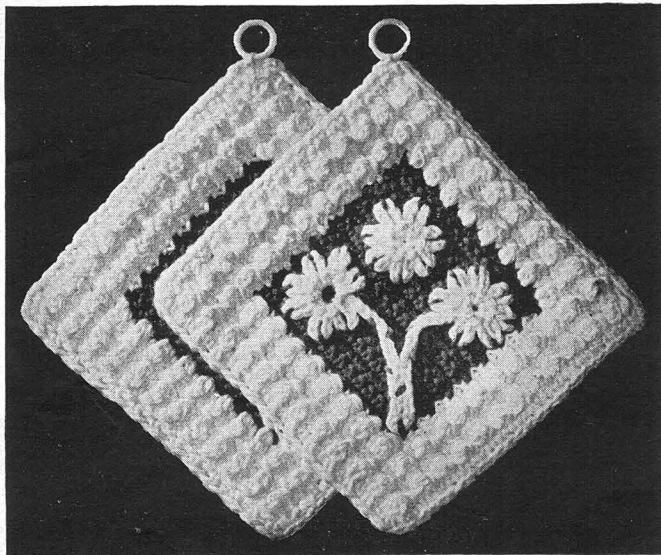
ROW 6: Sc in last sc, (ps in next sc, sc in next sc) repeat once. Pick up color through 2 loops of last sc, drop White and work sc in next 15 sc, pick up White, drop color, sc in next sc, repeat from * to * twice. Ch 1, turn.

ROWS 7 to 21 INCLUSIVE: Repeat Rows 5 and 6 alternately ending with sc row having 15 sc in color with 5 sc each end in White. Ch 1, turn.

ROWS 22 to 25 INCLUSIVE: Repeat Rows 2 and 3 twice. Cut color and one end of White in Row 22.

EDGE: Ch 1, sc in last (corner) sc, ch 1, sc in same st (ch 1, sc in next sc row down side of holder) repeat to corner, sc, ch 1, sc in corner st (ch 1, sk 1 sc, sc in next) repeat across. Work second half of holder same as first. Sl st to first sc made.

FLOWERS: With White ch 6, join with sl st to form ring. (Ch 5, sl st in ring) repeat 6 times. Fasten off. Make 3 of these flowers. Ch 30 for stem. Fasten off ends. Sew flowers and stem to holder as illustrated.



Here Puff Stitch in White forms a border for a plain crochet center in color.

MATERIALS: ENTERPRISE YARN—80 yds. White and 30 yds. color for the pair.

A HOT PAD, DOLL OR BEAN BAG

An attractive design for a Humpty Dumpty designed for three useful things • single, it's a Hot Pot Holder • sew two, back to back, for a Bean Bag • with crocheted inset between the two sides, stuff for a doll.

Size—Approximately 8½ in. high. Crocheted in Puff Stitch.

MATERIALS: For holder (or one side of doll or bag)—Approx. 30 yds. Color A (Brown); 10 yds. Color B (Yellow); 25 yds. Color C (Ivory); 3 yds. Color D (Black); or use Color A. For doll and bean bag make two sides,—the inset piece for doll will use additional—25 yds. color A, 12 yds. B, 18 yds. C and 10 yds. D.

Starts at bottom of pants: With Color A, ch 10, 9 sc on ch.

ROW 2: Ch 1, turn, sc in last sc, * 2 dc in next sc, holding final loop of each dc on hook, YO, draw through all 3 loops on hook at once (1 puff st made), sc in next sc pulling it down tightly, letting the Puff St puff out on wrong side of work which will be the outside. Repeat across (4 puffs).

ROW 3: Ch 1, turn, (sc in sc, sc in puff) repeat across. Repeat Row 2, then 3, having 2 sc in end sc in Row 5 (10 sc).

ROW 6: Ch 1, turn, sc and dc in last sc—this is an inc shown on chart by lines diagonally across squares—all inc at beginning of rows should be worked in same way, sc in next, (puff in next, sc in next) across. Fasten off. Make a second piece to correspond, starting Row 5 with ch 2, sk 1 st, sc in each st across (10 sc), working the inc (dc and sc) at end of Row 6. Then ch 1, sl st to FIRST sc in Row 6 of first piece. Fasten off.

ROW 7: Insert hook again through 2 loops of last sc of first piece, ch 1, turn, (work over ends to cover) * sc in each st across each leg and in ch 1 between (23 sc).

ROW 8: Ch 1, turn, sc in last sc, (puff st in next, sc in next) across (11 puffs).

ROW 9: Same as Row 3 (23 sc). Then repeat Rows 8 and 9.

ROW 12: Ch 1, turn, 10 puffs across, dc in next sc, holding last 2 loops on hook, draw up a loop in next sc, YO, draw through all 3 loops on hook (a decrease), work all dec at end of rows in same way.

ROW 13: Ch 1, turn, sc in dec st, sc in next 20 sc, sc in end sc, holding final 2 loops of it on hook, drop A at back, pick up B, draw through 2 loops on hook completing sc, work over starting end of B, carrying A along covering it, until again used (if not used again in same row, drop at back until again used).

ROW 14: Ch 1, turn, sc in last sc, dc in next sc, holding final loop on hook, drop B at back, draw A through 1 loop on hook, YO, dc in same sc, holding final loop on hook, YO, draw through all 3 loops at once (this completes a 2 color puff)—see symbols on chart for colors used) sc in next sc, 8 puffs in A, sc in next, 2—color puff (worked as on opposite end), inc (dc and sc) in same st with last sc made.

ROW 15: Ch 2, turn, sk 1 st of ch, sc in next 5, drop B, pick up A through 2 loops of last sc, sc in next 17 sts, holding 2 loops of last sc on hook, drop A, 2 sc in B, insert hook again in end sc, * pull up loop, YO, draw through 1 loop on hook, YO, through 2 loops on hook, insert hook through loop at base of last sc, repeat from * until 3 sts in all are added.

ROW 16: Ch 1, turn, inc in last sc, sc in next, 2 puffs in B, sc in sc, 2 color puff, 7 puffs A, sc, 2 puffs B, sc, inc in end sc, ch 2, turn. Follow chart to complete.

FEET: Join D to wrong side at bottom of pants, sc in third st from right—on right leg, (puff st in next, sc in next) twice. Ch 3, turn, sk 1 st of 3-ch, sc in next, (puff in next, sc in next) twice. Sl st to next sc of previous row. Fasten off. Make foot to correspond on other leg. Fasten off.

HANDS. With color A, ch 4, 3 sc on ch, (ch 1, sc in each sc) twice. Ch 1, turn, sc in center sc, ch 1, sl st in end sc. Make 2 pieces. Sew to arms, embroider eyes, nose and mouth as illustrated. Sew bone ring to center top of head.

THE BEAN BAG

Make two as for holder except that hands and feet are to be added after filling. Place wrong sides together and sew around, leaving opening at top. Fill with beans and close. Crochet hands and feet and sew on as shown.

DOLL

Make two sides as for holder. An inset is to be crocheted to go between the sides for stuffing. Make long enough to go all the way around the edge, changing colors to match sides of doll. Start at head with Color C, ch 6, 5 sc on ch, ch 1, turn, make 2 puffs wide (work as Rows 8 and 9 in holder) for 18 to 20 rows. Start sewing inset to edge and add puff rows to complete Color C. Join Color B, make 3 puff rows for arms and continue around in same manner. At hands join Color A and make 11 rows of sc (no puffs) and at feet join Color D and make 14 rows of sc. Sew ends of inset together—leave opening on one side for stuffing—stuff firmly and close. To wash—remove stuffing, launder in usual manner and re-stuff.

A group of dolls in Puff Stitch are shown in No. 9305—"Quick Crochet"—another book of instructions for Enterprise Yarn.

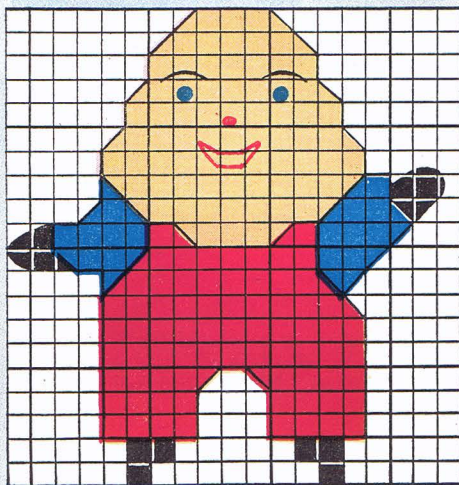
HOT POT HOLDER



BEAN BAG



DOLL



OVEN MITTS

Ever burn the back of the wrist when taking hot baking dishes from the oven? Oven Mitts will prevent it, for they cover to the wrist and protect both sides of the hand—may be slipped off easily if hot liquids spill on them.

ACORN

You'll say "they're the nuts," • with a pair of these oven mitts • designed to protect the hands from hot pans and baking dishes when removing from the oven • slip on like a mitten.

MATERIAL: May be in any combination of kitchen colors, or, to match the real thing, use Dark and Light Brown; will need 50 yds. for the hull, 75 yds. contrasting color for the acorn, for each mitt.

HULL: Ch 13, sk last 2 sts, (hdc and sc) in next st, (sc, 2 hdc, 3 dc, 2 hdc and sc), on ch, (sc and hdc) in end st.

ROW 2: Ch 3, turn, (dc, hdc and sc) in last hdc, sc across with (sc, hdc and dc) in end hdc.

ROW 3: Ch 2, turn, (hdc and sc) in last st, sc across with (sc and hdc) in end st. Repeat Row 2 once and Row 3 twice.

ROW 7: Ch 1, turn, sc in each st. Repeat Row 3 once and Row 7 four times.

EDGE: Ch 1, turn, sc (hdc in next sc, 3 dc in next, hdc in next, sc in next) 7 times. Sc around curve to other end of row. Fasten off.

NUT: Ch 27, 26 sc on ch.

ROW 2: (Ch 1, turn, sc in each sc) 17 times.

ROW 19: (Dec at each end. To dec, work off 2 sc tog as 1 st. Repeat Row 2) three times. Repeat Row 19 twice, Rows 2 and 19 each once.

ROW 29: Dec twice at each end. Repeat Row 19 four times. Ch 1, turn, sc, ch 3, sl st in last sc for a p, sc around, widening at top corners. Fasten off. Lap Hull over Nut and sew together. Make second side.

STEM: Ch 3, 5 dc in first st, ch 2, sl st in same st, ch 14, sl st in same st. Fasten off. Sew on top of one side. Steam and press, place back-to-back and sew together through 1 loop of each st, leaving top open around to 1½" from bottom of Hull.

PADDLE

Here is an attractive design for an oven mitt that is versatile • May be in solid color or with alternate stripes of White and color to match kitchen color scheme • If shortened, each side will be a lovely Holder • Made longer and wider, it will be a practical hot plate mat • The high ridges hold hot dishes up and away from the table • See pictures of mat and holders on page 3.

MATERIALS: A ball of 2 colors for two mitts with color stripes—two balls of a single color. A ball of two colors will more than make the platter mat (about 160 yds. of a single color).

OVEN MITT SIZE: Approximately 5½" wide by 8½" long. Holders are 1½" shorter.

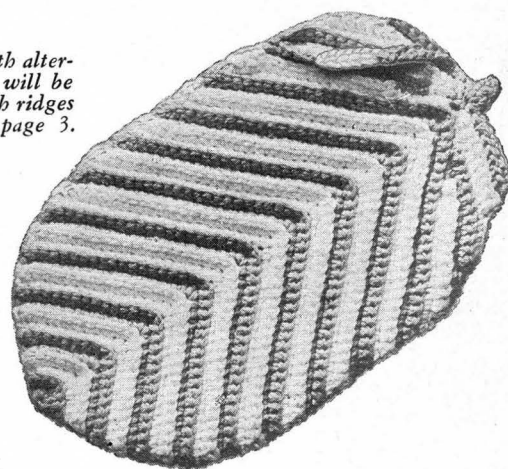
With color ch 2, 3 sc in first st. Ch 1, turn, working in back loops, 2 sc in last sc, 3 sc in next, 2 sc in next. Cut thread 2" from work and pull end through.

ROW 3: Join White through 2 loops of last sc, ch 1, draw starting end of White through last ch 1, turn, work over end of threads covering them up, sc in each sc, with 3 sc in center sc.

ROW 4: Ch 1, turn, 2 sc in first and last sc, 3 sc in center sc, sc in each remaining sc. Join color same as White in Row 3, cover ends and repeat Rows 3 and 4, for a total of 9 rows, alternating with 2 rows of color, then 2 rows of White, to complete Paddle. Then repeat Row 3 six times.

The Plate Mat starts widening at this point and may be made to width desired by repeating Row 3. Each 6 rows added to length will inc. width 1½ in. For a Mat about 9 in. wide, for a platter, repeat Row 3, 17 more times (23 in all) as for Mitt. Then, after working from following ** to **, repeat Row 16 to desired length (12 times for Platter Mat) without further widening. To shape at other end, add the extra number of rows made for width, to the number of sc in parenthesis in "To Shape Paddle," i. e.: for the 9 inch Platter Mat, 17 more rows were added, making the total 32 sc instead of 15 as for Mitt.

ROW 16: **Ch 1, turn, sk last sc, sc in each sc around to second from end with 3 sc in center st. Repeat Rows 3 and 16 three times ** then Row 16 twelve times—for Holders, five more times.



TO SHAPE PADDLE: *Ch 1, turn, sk last sc, (15 sc). Ch 1, turn, sc in last (13 sc). Ch 1, turn, sk last sc, (15 sc). Ch 1, turn, sc in last (12 sc). Ch 1, turn, sk last sc, (14 sc). Ch 1, turn, sc in last (10 sc). Ch 1, turn, sk last sc (9 sc). *2 sc in next sc, join White, (21 sc). Repeat from * to *. Sl st in next sc, ch 4, 3 sc on ch, sl st in same st with sl st, sl st in next (9 sc). Fasten off. Make a second piece. Sew around sides and bottom, leaving opening 2¼ in. down from top on each side.

For Holders or Mats, make one piece, pad with flannel and line.

CROSS STITCH

The design is cross stitched on this oven mitt — a floral or utensil design may be substituted for variety.

MATERIALS: 80 yds. of White Enterprise Yarn and 30 yds. of color will make one mitt.

BACK: With color, ch 2, 2 sc in first st.

ROW 2: Ch 2, turn, sk 1 st of ch-2, sc in next 2 sts, 2 sc in last st.

ROW 3: Ch 2, turn, sk 1 st of ch-2, sc in next 4 sts, 2 sc in last st, ch 2, turn.

ROWS 4 THROUGH 11: Repeat Row 3, inc. 1 st at each end of row (22 sc in Row 11). Join White through 2 loops of last sc.

ROWS 12-13: Work same as Row 3. Row 13 will have 26 sc.

ROWS 14 THROUGH 38 inclusive: Work sc in each 26 sts.

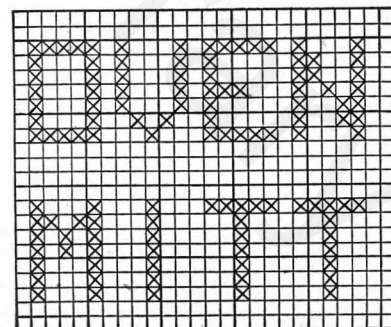
ROWS 39-40: Ch 1, sk 1 sc, sc in next 24 sts (22 sc in Row 40). Fasten off. Join color as in Row 12.

ROWS 41 THROUGH 51: Same as Rows 39 and 40, with dec of 1 st each end of row until 1 st remains in Row 51. Fasten off.

FRONT: Same as back through Row 38. Fasten off.

Embroider in cross stitch the words "Oven Mitt," on front as illustrated.

Place back to back and sew tog, using matching color. Join White through Row 38 (last row) at top of front and Row 38 of back, sc in end of next 12 rows to center top, 3 sc in top st, sc in next 13 rows down other side of point.



HOUSES



Cottages make appropriate holders—decorative and useful in the kitchen • 2 or 3 on the racks shown elsewhere in this book, will make an appropriate gift of bazaar item. One has crocheted outline—the other is decorated in Cross Stitch.

MATERIALS: A ball of White Enterprise Yarn and 50 yds. of color will make 3 cottages.

CROCHETED COTTAGE

With color, ch 35, dc in fourth st on ch, dc in each st across (33 dc), to measure about 6 in.

ROW 2: With color ch 3, 1 dc, White 13 dc, color 2 dc, White 6 dc, color 2 dc, White 2 dc, color 2 dc, White 2 dc, color 2 dc.

ROW 3: With color ch 3, 1 dc, White 2, color 2, White 2, color 2, White 6, color 2, White 2, color 4, White 1, color 4, White 2, color 2.

ROW 4: With color ch 3, dc, White 2 dc, color 4, White 1, color 4, White 2, color 2, White 6, color 2, White 2, color 2, White 2, color 2.

ROW 5: With color ch 3, dc, White 2 dc, color 6, White 6, color 2, White 13, color 2.

ROW 6: With color ch 3, 16 dc, White 14, color 2.

ROW 7: With color sl st, ch 3, dc above first White st of previous row, White 3, color 2, White 7, color 2, White 12, color 2.

ROW 8: With color sl st, ch 3, dc above first White st of previous row, White 13, color 2, White 9, color 2.

ROW 9: With color sl st, ch 3, dc above second White st of previous row, White 4, skip st, color 2, White 13, color 2. Break White thread.

ROW 10: With color sl st, ch 3, dc above first White st of previous row, 19 dc. Break colored thread.

Fasten color on roof 7 sts from back, ch 3, 3 dc, ch 10 and fasten in top of ch 3.

Make 9 sc around loop. Break thread. Fasten ends.

CROSS STITCHED COTTAGE

With White, ch 30, 29 sc on ch (to measure about 5¾ in).

ROWS 2 through 13: Ch 1, 29 sc.

ROW 14: Ch 1, sk 1 st, sc in 28.

ROWS 15 through 20: Work as Row 14, dec at beg of rows only (22 sc in Row 20).

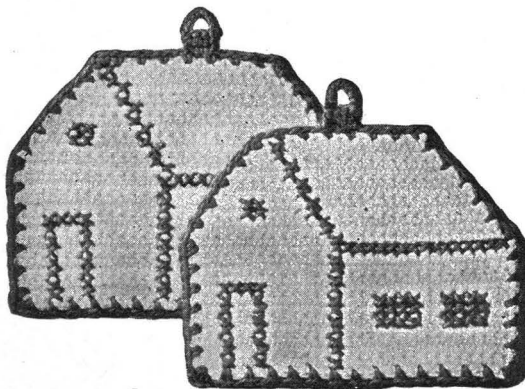
ROW 21: Ch 1, sk 2 sts, sc in 20.

ROWS 22 through 24: Repeat Row 21, (14 sc in Row 24).

Cross Stitch windows, door and outlines as illustrated.

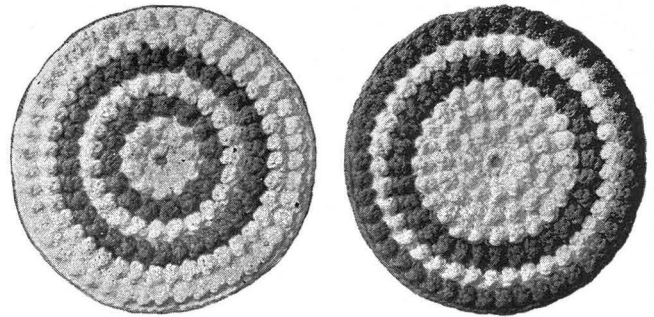
EDGE: With color, 2 sc in bottom corner, (ch 1, sk 1, sc in next st) repeat around with 3 sc in each corner st. Sl st to first sc. Fasten off.

HANGER: Sew bone ring or join color to center top of holder, sc in next 2 sts. Ch 1, turn, sc in each 3 sts. Ch 8, turn, sl st in third sc. Fasten off. Pad and line if wanted, for extra protection.



This round rug in Puff Stitch will be beautiful in living room, bed or bath room colors. By adding rows to the holder instructions above, mats and rugs can be crocheted to unlimited sizes for any room.

ROUND—IN PUFF STITCH



Puff Stitch holders, mats and rugs make up neatly and the result is a firm, heavy piece to protect hands, table or floor. The raised puffs form air spaces under hot pots and dishes to keep off the heat. The round shapes are simple to do—these instructions show how to start and rows are added to any wanted size.

Puff rows may be alternate rows of contrasting or harmonizing shades—in holders to match the kitchen color scheme. For table mats, white may be preferred for formal settings, or gay fiesta stripes, ranged round and round, as wanted, in any desired color scheme.

Crocheted to rug sizes, puff stitch will lay flat—not curl—and makes a firm, heavy mat in any color scheme. With the sc rows between the puff rows in contrasting color, novel two-tone effects are the result.

MATERIALS: The 6 in. holders or mats shown need 85 yds. white and 50 yds. color for a pair.

The rug shown below is 30 in. in diameter—has 35 rows of puffs—the stripe starts on 20th row and is 8 rows wide—was tightly crocheted and used 12 balls background color and 4 balls for stripe.

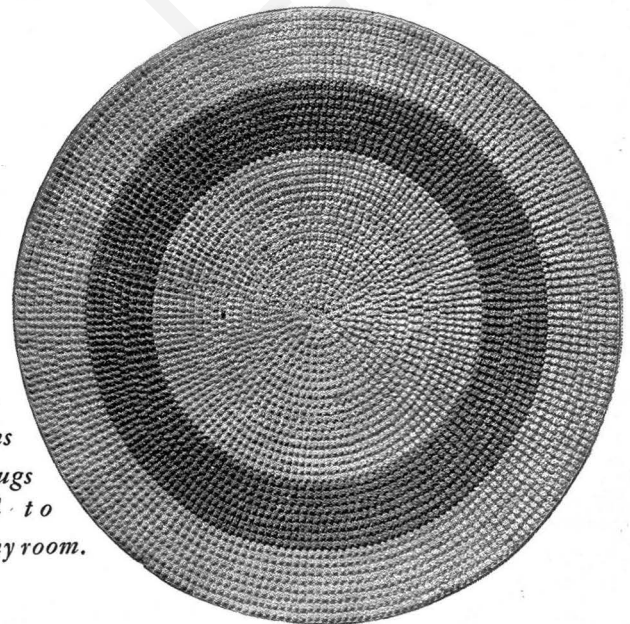
THE HOLDER: Approx. 6 in. diameter—ch 6, sl st to form ring. Ch 1, 10 sc in ring. Sl st to first sc.

ROW 2: Ch 1, 2 sc in each sc around (20 sc), sl st to ch 1.

ROW 3: Ch 1, turn, sc in st with sl st, * 2 dc in next sc, holding final loop of each dc on hook, thread over and pull through all 3 loops on hook at once (1 puff st made). Sc in next sc, pulling it down tight—letting the puff stitch puff out on back of work, which will be the right side. Repeat from * around (10 puffs). Sl st to first sc.

ROW 4: Ch 1, turn, (sc in sc, 2 sc in puff) repeat around (30 sc). Sl st in first sc. Repeat Rows 3 and 4 alternately through Row 9, then continue working sc and puff rows alternately with 2 sc in every eighth st in Rows 10 and 14 and in every sixth st in Row 12. Fasten off. This makes a mat or holder approx. 6 in. in diameter.

For larger mats or rugs, continue to alternate sc and puff rows, working 2 sc in every eighth st in one row and in every sixth st in next row. Occasionally it will be necessary to omit one sc of the last 2-sc group (in sc rows) as the number of stitches in each row must be an even number (divisible by 2), to work puff rows correctly. If work shows tendency to ruffle or pucker, inc or dec the number of sts in sc rows to keep flat.



SCOTTIE-IN PUFF STITCH

A Hot Pot Holder in the Kitchen

One of the most novel pot holders to be crocheted that we have ever seen! Firm and heavy for use with hottest pots and pans,—a dressy, ornamental holder to hang beside the stove. It's double—to slip over the handle!

MATERIALS: 100 yds. White Enterprise Yarn and just a few yards of color (for eye and collar) will be needed for the holders. The Sleepy Time Scottie will need 60 to 75 yards more, of White, for the inset piece. Steel Crochet Hook No. 1.

NOTE: Puff Stitch is a new stitch—there are new abbreviations not commonly used in crocheting, in these instructions:—for increases (inc.) make 1 sc, 1 dc in first st, to start puff row; 1 dc, 1 sc, in last st to end a puff row. Also PUFF STITCH OR PUFFS are indicated as PS.

Two sides will be needed for either the holders or the toy.

Starting at feet, with White ch 8, 7 sc on chain.

ROW 2: Ch 1, turn, sc in last sc, * 2 dc in next sc, holding final loop of each dc on hook, thread over and pull through all three loops at once. (1 puff st (PS) made), sc in next sc, (pull it down tight, to let the ps puff out on back of work) which will be the right side. Repeat from * across (3 Ps).

ROW 3: Ch 1, turn, sc in first sc, (sc in ps, sc in next sc), repeat across (7 sc). Repeat Row 2.

ROW 5: Ch 1, turn, sc in first 6 sts, 2 sc in end sc.

ROW 6: Ch 1, turn, sc, dc, (an inc.), in first sc, sc in next sc, ps in next, repeat to end (3 ps and 1 inc.).

ROW 7: Ch 1, turn, sc in each st (9 sc). Repeat Row 2, (4 ps). Break thread and make second piece to correspond, working inc. at beginning of sc rows with ch 2, turn, sc in second st from hook, sc in each st across. Then work puff row to within 1 st of end, inc. in end st. Repeat last 2 rows of first foot (making inc. as before at opposite ends of row) then ch 7, sl st to first sc in puff Row 8 of first foot. Cut thread 2" from work.

BODY: With right side up, attach thread to first sc of first foot, ch 1, sc in each st across, working over ends, covering them up (25 sc in row).

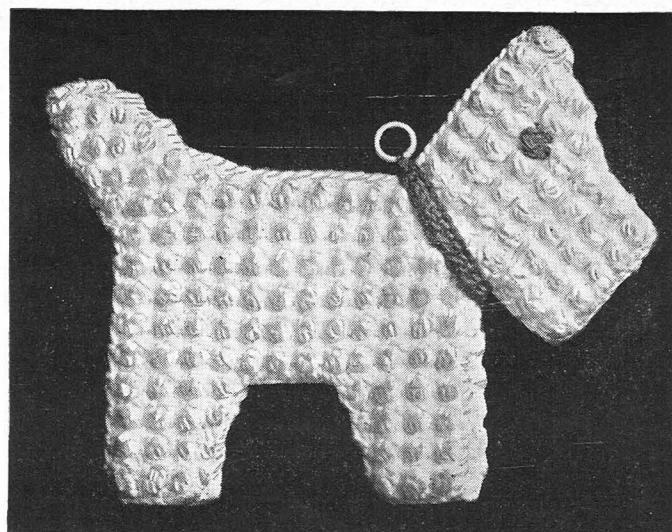
ROW 2: Ch 1, turn, ps across (12 ps). Repeat Rows 1 and 2 twice.

ROW 7: Ch 1, turn, sc in first 23 sts.

ROW 8: Ch 1, turn, work 11 ps in row. Repeat Row 7 (21 sc), then Row 8 (10 ps).

ROW 11: Ch 2, turn, sk 1 st of 2-ch, sc in next 22 sts across.

ROW 12: Ch 1, turn, 10 ps across, inc. in end sc.



TAIL: Ch 1, turn, sc in first 9 sts, ch 1, turn, 4 ps in row. Ch 2, sk 1 st of 2-ch, sc in next 8 sts. Ch 1, turn, 3 ps to end, inc. in end st. Ch 1, turn, sc in first 7 sts. Ch 1, turn, sk 2 sc (sc in next, ps in next) repeat once, sc in end st. Ch 1, turn, sc in first 5 sts. Fasten off.

HEAD: Ch 12, 11 sc on ch. Ch 1, turn, 5 ps across. Ch 1, turn, sc in each 11 sts across. Ch 1, turn, 5 ps in row. Ch 1, turn, sc in each 11 sts. Ch 1, turn, 5 ps in row. Ch 1, turn, sc in each st to end. 2 sc in end st (12 sc). Ch 1, turn, inc. in first sc, (sc in next, ps in next) repeat across (5 ps and 1 inc.). Ch 1, turn, sc in each st to end, 2 sc in end st (14 sc). Ch 1, turn, inc. in first sc, sc in next, ps in next, sc in next, holding 2 loops of last sc on hook, drop White on wrong side, draw loop of color through 2 loops on hook, completing sc, work over starting end of color and White, carrying it along, make 1 ps in color (for eye), pick up White, draw through 2 loops of final sc, fasten off color, and complete row of puffs in White. Ch 1, turn, sc in each st to end, 2 sc in end sc (16 sc). Ch 1, turn, inc. in first sc, work in ps to end of row. Ch 1, turn, sc in 17 sts. Ch 1, turn, 7 ps in row. Ch 1, turn, sc in each st across. Fasten off.

Sew head to body as illustrated. Make second side to correspond, **BUT BE SURE TO MAKE INCREASES AND DECREASES AT OPPOSITE ENDS OF EACH ROW**, so that when wrong sides of work are placed in position to sew together, they will be alike and same size.

FOR HOLDER: Pad each half, then line with muslin. Press each piece on wrong side. Place padded sides together, starting at base of neck and stitch together around nose, head, and across top of body and around to base of tail.

COLLAR: With color, ch 26, 25 sc on ch. Cut thread 6" from work, thread to needle, place around neck and sew ends together. Sew bone ring to collar as illustrated.

A CUDDLY, SLEEPY-TIME TOY IN THE NURSERY

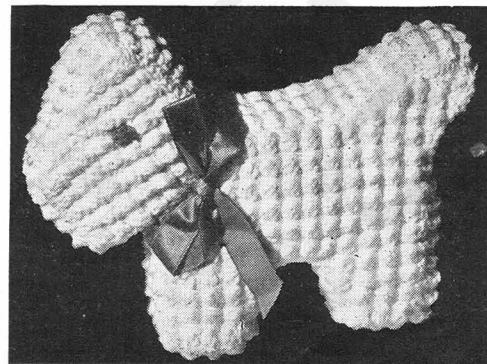
With a crocheted inset piece to go between the sides and stuffed; Scottie is a soft, cuddly sleeping toy. Unlike so many store toys, it may be washed, blocked and restuffed when soiled. So soft it won't hurt a sleeping child when rolled on in the crib.

After making the two sides as for holder, an inset piece is crocheted to be placed between the sides to give depth and room for stuffing as follows:

Ch 8, 7 sc on chain. Repeat Rows 2 and 3 of feet alternately, until 79 rows of puffs are complete. Do not cut thread. This inset is to be stitched between the two body pieces at edge, on right side of work. Start sewing at back of neck, with end of piece so that rows may be added or taken off if needed. When exact length of inset is determined, break thread and sew ends together. Care must be taken that either body or inset is not drawn, in stitching, or stretched. Be sure when sewing that all corners are exactly opposite. Leave opening at top of body,—stuff, and close. Work collar same as for holder using 40 sts for chain.

A colored puff for nose can be worked on inset and mouth embroidered, if wanted.

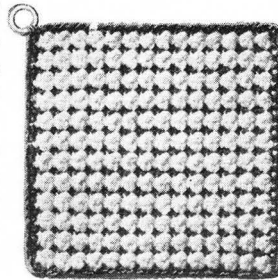
There are instructions for a Humpty Dumpty Doll, an Elephant, a Duck and a Rabbit, with pictures in color, in "Quick Crochet," another book of instructions for Enterprise Yarn. "Quick Crochet" shows more than 35 interesting gadgets to crochet for gifts and bazaars or personal use. Ask your dealer for it—if not available we will send it for 10c.



PUFF STITCH HOT POT HOLDERS

These instructions give the information needed to make Puff Stitch—an interesting combination of stitches in Enterprise Yarn that form into rectangular shaped puffs. You can make Hot Pot Holders, Hot Plate and Place Mats for the table, rugs and chair seats in Puff Stitch. Blocks or rows of puffs in color form the designs. If the sc rows between the puffs are in a contrasting color, two tone effects are the result—the puffs in White, with the sc rows darker, make the puffs seem higher, with shadowy valleys between.

Lay out designs on cross ruled paper—the kind high school students use, or found in many note books. Each square on the paper shows a puff stitch. Make initials 3 puffs wide and 5 puffs high. M's, N's, V's and W's are difficult but may be made 5 puffs wide. Lay out those wanted on paper as in the initialed holder. Pencil in the edge evenly around them—if wider letters are needed add rows of puffs to make a square. Each row across the drawing is a row of puffs—change color, where blocks show for the design; crochet a row of sc across, and add the next row of puffs, changing color where necessary in each row.



Any size piece may be made—from holders to largest rugs.
30 Puffs = 1 foot. 5 puffs or 5 rows = 2 inches.
Starting ch is made 2 ch longer than double the number of puffs in first row on chart.

HERE IS HOW PUFF STITCH IS CROCHETED

(This is the Initial Holder in Puff Stitch.)

A pair of holders, approx. 5" square, will use 100 yds. White and 30 yds. color, if designs are as pictured here.

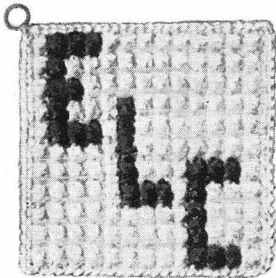
To Crochet: With White ch 28. 27 sc on ch (always 1 sc shorter than ch).

ROW 2: IF A SINGLE COLOR: Ch 1, turn, sc in last sc, * 2 dc in next, holding final loop of each dc on hook, YO and pull thru all 3 loops on hook at once (1 puff st made), sc in next sc, pulling it down tight,—let it puff out on back of work, which will be the right side. Repeat from * across (13 Puffs).

ROW 2: IF COLORED DESIGNS (as the initial holder): Ch 1, turn, 9 puffs in White. Then in sc following 9th puff, hold 2 loops of sc on hook, drop White, draw loop of color thru 2 loops, completing sc. Each color is joined this way—thru sc following puff—make 3 puffs in color, drop color, draw up White, one puff in White, ch 1, turn. In this and all other sc rows following puff rows, colors are joined this way and worked exactly above color in previous rows.

ROW 3: Ch 1, turn, sc in last sc, (sc in next puff, sc in next sc) repeat across (27 sc). If colors are only used once in row, drop on wrong side until picked up in following sc row,—if used again in same row, carry along, covering up.

(The sc row is put on after each puff row and may be in contrasting colors for the two tone effect.) Continue from Row 2 on, adding alternate rows of puffs and sc. Complete with row of sc following final puff row. Finish sides with sc in same color as ends. If contrasting edge is wanted start and finish ends and sides in color.



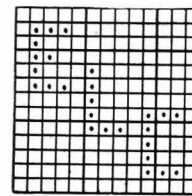
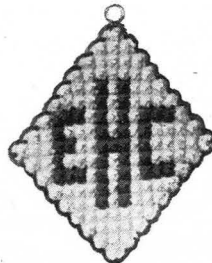
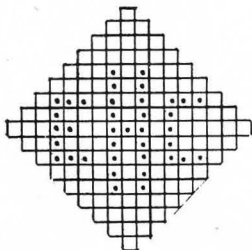
DIAMOND SHAPE HOLDERS

Diamond shapes are simple to do—they make initials and designs that show "straight up" when hanging on the hook.

To Crochet: Start at point—ch 4, 3 sc on chain, ch 1, turn, sc in last sc, puff st in next (instructions for square holders above describe how to make puff st), sc in next sc. Add 1 puff each end of following puff rows until 9 rows are complete (17 puffs in Row 9), then dec 1 puff at end of each row until 1 puff remains at top. Edge: If wanted—sc in last puff, (ch 3, sc in end of each sc row) and sc in each corner puff. Continue around holder. Join and fasten off.

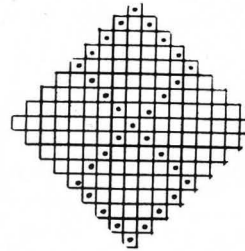
TO INCREASE: After each puff row is complete, ch 3, turn, sk 1 st of ch-3, 1 sc in each st across to end of row. Work 2 more sc in last sc (3 sc in end sc).

TO DECREASE: Start at end of puff row 9, ch 1, turn, 1 sc in each st across, ending in third st from end, ch 1, turn, make puff row as before but 1 puff less than previous row.



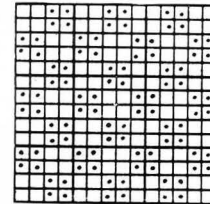
INITIALS

Lay out those to be crocheted on cross ruled paper. Add a row of puffs each way for wider initials.



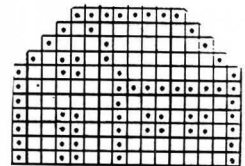
QUAD-DIAMONDS

Crochet the dots in your favorite kitchen color on White, or each section a different color.



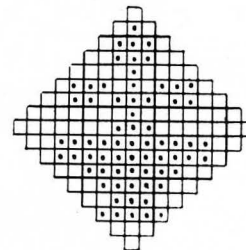
CHECKERS

Alternate squares of four puffs, in your favorite kitchen color and White.



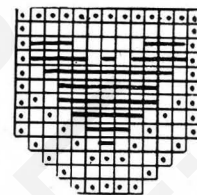
HOUSES

A pair in White with the kitchen color for trim, windows and door.



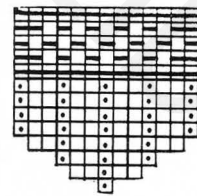
FLOWER POT

Spot the flowers in Gold; the stem in Green; the pot in Red with a Yellow base.



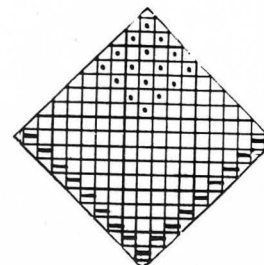
THE EAGLE AND THE SHIELD

In Red, White and Blue—a patriotic pair that's different—White puffs for stars in a Blue field, with stripes in Red and White. The eagle is Blue on a White back with Red trim. Uses 40 yds. White and 30 yds. each of Red and Blue.



DIAMOND

Another patriotic holder—Red and White puffs at the top—a row of Blue across the lower edges.

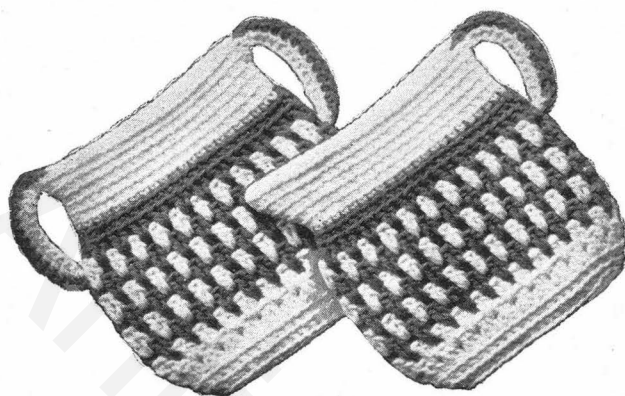


Any design you can lay out on cross ruled paper can be crocheted in Puff Stitch.

There are instructions for Puff Stitch, and 3 charts showing designs laid out for rugs in our book, "Wings to Your Crochet Needle."

Crochet Puffs in White or color for each square on these charts—for additional interesting hot pot holder designs.

SUGAR 'N CREAM



Two of our best known Hot Pot Holder designs. The Fiesta Sugar 'n Cream Holders also are made from the instructions at the left.

The color stripes may be across the bowls—the tops in white; or with white bowls, and the top bands, alternate rows of white and color. For Fiesta stripes make alternate rows across the top in a different color—one row each of red, green, gold with white between and a row of blue across the top and around edge of handles (shown below).

MATERIALS: A ball of White Enterprise Yarn will make a pair in either color combination. Approximately 50 yards of color is needed for color stripes on bowls. With Fiesta Striped tops on white bowls about 12 yards of Blue and 6 yards of Red, Green and Gold. With single color stripes, approximately 30 yards of color will be used.

SUGAR: (Starts at bottom) with white ch 20 (should be 3½" long). 19 sc on ch, 19 sc on opposite side (continue to work around center).

RND 2: In back thread of sts, 2 sc in next ch 1, sc in 18 sc, 2 sc in next, sc in next 19.

RND 3: 3 sc in next (above previous inc), sc in next 20, 3 sc in next (above inc), sc in next 20.

RND 4: Sc in each st (45 sc).

RND 5: Dc in each sc around (45 dc).

RND 6: Sk 1 dc, * 2 dc in next space between dc sts, sk 2, repeat from * around.

Color is joined for round 7 if stripes are in bowls. Continue with white thru round 15 if stripes are in top bands.

RND 7: Join color thru 2 loops of last dc, 2 dc between each set of dc around.

Repeat Rnd 7 alternating color and white until there are four color stripes.

RND 14: Sc in back thread of each st around (45 sc).

RND 15 THRU 18: Join white thru 2 loops of last sc, sc in back thread of each st. If colored stripes are to be in the top bands Rnd 16 will be in color; Rnd 17 white; Rnd 18 color; Rnd 19 white; Rnd 20 (top) and edge of handles in color. In the Fiesta Tops Rnd 14 is red; Rnd 16 green; Rnd 18 gold; Row 20 (top) and edge of handles, blue.

RND 19: 3 sc in first sc of previous row, sc in next 22 sts, 3 sc in next, sc in each st to end rnd.

HANDLE and ROW 20: Ch 13, sl st to top of Rnd 11, sc in each st of ch, sc across top of one side to opposite side of bowl. Make Handle on other side and sc across top of other side. Break thread. With color, sc along edge of handles.

CREAM: Follow instructions for Sugar Bowl thru Rnd 14. Fasten off.

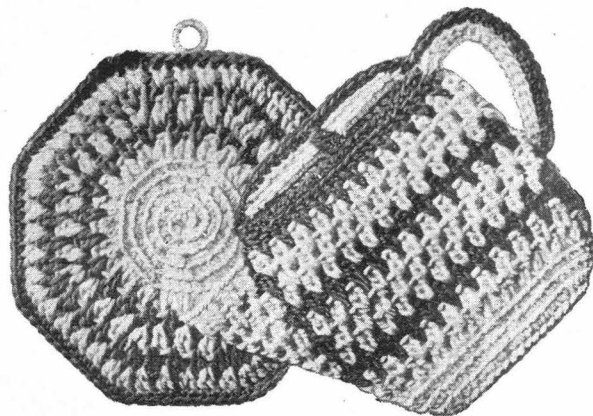
RND 15: In white, sc in each st for 1 rnd.

RND 16: Sc in 22 sts, 3 sc in next, sc in next 22 sts.

RND 17 THRU 19: Sc in each st around with 3 sc in center sc of 3-sc group in each row.

RND 20: Make handle at the beginning of row as on Sugar Bowl, sc in each st around top. Fasten off.

TEA POT and STAND



A sturdy set of Hot Pot Holders • both double, to give added protection. Use in the kitchen or at the table • the Teapot for a decorative holder • the Stand to go under a hot teapot at the table.

MATERIALS: A ball of white and approximately 50 yards of your matching kitchen color will make a set of Teapot and Stand Holders.

TEAPOT:

TO START: The first 6 rnds are same as "Sugar" in other column.

RND 7: Join color thru 2 loops of last dc, make 11 sets of dc, sk 1 dc, (dc, ch 1, dc) in next sp between dc, (spout inc), sk 1 dc, 11 sets of dc to end of rnd.

RND 8: In White, 12 sets, inc over ch 1, 12 sets to end.

RND 9: 11 sets, using a new thread of color, 1 set in next sp, with white, spout inc over ch 1, sk 1 dc, with color, 2 dc in next sp, break color. Continue with white, (25 sets of dc counting spout inc as 1 set).

RND 10: 2 dc in each sp around with spout inc.

RND 11: In color, first set of dc above first set in Rnd 7, 11 more sets in color, (1 set, inc, 1 set in white), 12 sets color.

RND 12: In white, same as Rnd 10.

RND 13: 11 sets white, 1 set in color above last colored set in Rnd 9, break color, 2 sets dc, inc, 2 sets in white, 1 set in color in sp directly above next colored set in Rnd 9, break color, 11 sets white.

RND 14: In white, omit ch 1 in spout inc, 31 sets around.

RND 15: In white, ch 20, fasten with sl st where Rnds 7 and 8 meet, turn, ch 1, sc in each st of ch, draw color thru last 2 loops of last sc.

RND 16: In color (first set above first set of Rnd 11), 11 sets of dc, dc in next sp, sk 6 sps, dc in next, 11 sets to end of row.

RND 17: Sk st at top of handle and taking back thread make sc in each st for 1 rnd (46 sc). Break thread. Fasten all threads on inside.

TOP: In white, sk first st on each side, sc in next 20 sts across picking up both front and back at same time to close top, sl st in next st, turn.

ROW 2: Ch 1, sk 2 sts, in back thread sl st in next, 16 sc across, sl st in next, turn.

ROW 3: Ch 1, sk 2 sts, sl st in back thread of next st, 14 sc, sl st, ch 1. Fasten off. Join colored thread at bottom of handle, sc in each st up handle, sl st in last st of handle, sc to center top, * YO, insert needle around sc in first white row directly below, YO, draw up loop ½ inch long, YO, insert hook around next st in first row of top, YO, draw up a loop ½ inch long, draw thru all 5 loops, ch 1, repeat from * making knot on opposite side of top, sk next st of top, continue across with sc, joining to color at bottom of cover. Fasten off.

STAND:

In white, ch 5, sl st to form ring, ch 1, 8 sc in ring. Work in back threads of sts, 2 sc in each sc (16 sts). (Sc in first st, 2 sc in next) repeat around (24 sts). (Sc in next 2 sts, 2 sc in next) repeat around, each inc above inc in previous rnd (32 sts). (Sc in next 3 sts, 2 sc in next) repeat around (40 sts.)

RND 1: Ch 2, counted as 1 dc, (dc in next 4 sts, 2 dc in next) repeat around, sl st to ch 2 (48 dc).

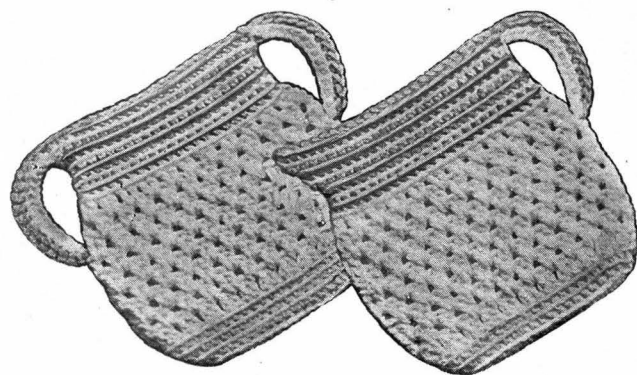
RND 2: In color, ch 3, * (sk 2 dc, 2 dc in next sp BETWEEN dc's) twice, sk 2 dc, (dc, ch 1, dc—an inc) in next sp bet dc, repeat from * around, sl st to ch 3. Two sets of dc bet each inc.

RND 3: In white ch 3, 3 sets of dc between each inc, inc in each succeeding row to be worked over ch 1 of previous inc, sl st to ch 3.

RND 4: In color, 4 sets of dc bet inc, fasten off. Should measure 5 inches across.

Make another mat. Place wrong sides of pieces together and work around with white as before but inserting hook thru both pieces at same time, 5 sets of dc bet inc and omit the ch 1 of inc, continue around, sl st to ch 3. Fasten off.

In color, sc in each st around. Fasten off. Sew bone ring to center of one side on stand for hanger.



KITTEN BIB



Enterprise Yarn is soft and absorbent so it makes lovely baby bibs. This Kitten Bib is amusing while feeding and will hold a lot of moisture. Use Baby Pink or Blue for the design and stripes, or any of the brighter shades.

MATERIALS: One ball White Enterprise Yarn, 15 yds. color. Size: 9½ x 12 in.

With White, ch 52, skip last st, sc in next st, (ch 1, sc in next second st of long ch) 25 times to end.

ROW 2: Ch 1, turn, 1 sc in last sc, (ch 1, sc in next sc) 25 times to end. Repeat 3 times.

ROW 6: Ch 4, turn, skip last sc, dc in next sc, (ch 1, dc in next sc) 24 times to end.

ROW 7: Ch 1, sc in last dc (ch 1, sc in next dc) 24 times, ch 1, sc in second st of end 4-ch.

Repeat Row 2 sixteen times, then repeat Rows 6 and 7, then repeat Row 2 twenty times, or to desired length, bringing Bib up to front of neck.

SIDES OF NECK: Ch 1, turn, sc in last sc, (ch 1, sc in next) 9 times, ch 1, sl st in next. Ch 1, turn, sk sl st, sl st in next, (ch 1, sc in next) 9 times.

Ch 1, turn, sc in last sc, (ch 1, sc in next) 7 times, ch 1, sl st in next. Ch 1, turn, skip sl st, sc in next, (ch 1, sc in next) 7 times. Ch 1, turn, sc in last sc, (ch 1, sc in next) 6 times, ch 1, sl st in next. Ch 1, turn, sk sl st, sc in next, (ch 1, sc in next) 6 times. Fasten off.

Turn, skip 4 sc on long row and join to next sc. (Ch 1, sc in next) 10 times. Ch 1, turn, sc in last sc, (ch 1, sc in next) 8 times, ch 1, sl st in next. Ch 1, turn, skip sl st, sc in next, (ch 1, sc in next) 8 times. Ch 1, turn, sc in last sc, (ch 1, sc in next) 7 times, ch 1, sl st in next. Ch 1, turn, skip sl st, sc in next, (ch 1, sc in next) 7 times. Ch 1, turn, sc in last sc, (ch 1, sc in next) 6 times. Ch 5, dc in same st with last sc, (ch 1, dc in next) 13 times around neck to opposite corner, ch 2, dc in same corner st, (ch 1, dc in next) 6 times across to outside corner, (ch 2, dc in same corner st) twice, (ch 1, dc between next second and third rows) repeated to corner, (ch 2, dc in same corner st) twice, (ch 1, dc in next second st) 25 times to corner. Continue around in same way. Join final 1-ch to third st of first 5-ch. Fasten off.

EDGE: Join color to one 1-ch space, (ch 1, sl st under next 1-ch) repeated around. At corners, make (ch 1, sl st, ch 1, sl st) over each 2-ch space. Fasten off.

TIES: With color, make 2 chains each 9 in. long and fasten to top corners. Weave color through both beading rows—over-and-under alternate dc, (then weave back over opposite bars) repeated 4 times (6 strands of weaving).

Design: Lay a piece of tissue paper over pattern and trace each stitch. Baste tissue paper in center between woven rows. Then with a large needle, make the single row of stitches outlining kitten. Fill in tail solid, make a French Knot for each eye. When finished, tear away the paper. Other designs may be substituted, from transfer patterns.

Repeat from * 5 times. Turn, place one petal (see color arrangement below) right side up on last shell made, insert hook through back loop of first of 9 dc in end of petal and through both loops of last dc on base, catch yarn and pull through all loops on hook (a sl st). (*Ch 1, sl st through back loop of next dc on petal and on base) 8 times. Join next 5 petals in same manner. Tack tips of petals together in groups of three.

ARRANGEMENT OF COLORS: This suggested color layout will make each slipper different—serve as identification if goblets are removed from the table to be refilled. Each set will use the same amount of yarn. A ball each of the 4 colors will make 3 complete sets. Place petals around each slipper in following order: Ivory base—Blue, Green, Ivory, Tearose, Green, Ivory. Blue base—Blue, Ivory, Green, Tearose, Ivory, Green. Green base—Blue, Tearose, Green, Blue, Tearose, Ivory. Tearose base—Blue, Green, Tearose, Blue, Ivory, Tearose.

Many other color layouts may appeal to you—try them; you'll like the way these coasters will save the table. A set of plain goblets with slippers on, in a fancy box, will make an attractive gift, or a low cost bazaar item.

MAT

A set of goblet slippers and the mat shown here makes an even more attractive gift. The Mat will serve to absorb the condensation from a pitcher • also can be used as a Hot Plate Mat, at the table.

Make petals as for top of slippers. Repeat first two rows of slipper base for center. Fasten off. Tack petals around edge of center. Join Tearose for edge in back loop of first 9 dc on end of one petal, * (ch 1, sl st in next dc) 8 times, sl st in first of 9 dc on end of next petal. Repeat from * around. Fasten off.

Repeat from * 5 times. Turn, place one petal (see color arrangement below) right side up on last shell made, insert hook through back loop of first of 9 dc in end of petal and through both loops of last dc on base, catch yarn and pull through all loops on hook (a sl st). (*Ch 1, sl st through back loop of next dc on petal and on base) 8 times. Join next 5 petals in same manner. Tack tips of petals together in groups of three.

ARRANGEMENT OF COLORS: This suggested color layout will make each slipper different—serve as identification if goblets are removed from the table to be refilled. Each set will use the same amount of yarn. A ball each of the 4 colors will make 3 complete sets. Place petals around each slipper in following order: Ivory base—Blue, Green, Ivory, Tearose, Green, Ivory. Blue base—Blue, Ivory, Green, Tearose, Ivory, Green. Green base—Blue, Tearose, Green, Blue, Tearose, Ivory. Tearose base—Blue, Green, Tearose, Blue, Ivory, Tearose.

Many other color layouts may appeal to you—try them; you'll like the way these coasters will save the table. A set of plain goblets with slippers on, in a fancy box, will make an attractive gift, or a low cost bazaar item.

MAT

A set of goblet slippers and the mat shown here makes an even more attractive gift. The Mat will serve to absorb the condensation from a pitcher • also can be used as a Hot Plate Mat, at the table.

Make petals as for top of slippers. Repeat first two rows of slipper base for center. Fasten off. Tack petals around edge of center. Join Tearose for edge in back loop of first 9 dc on end of one petal, * (ch 1, sl st in next dc) 8 times, sl st in first of 9 dc on end of next petal. Repeat from * around. Fasten off.

Repeat from * 5 times. Turn, place one petal (see color arrangement below) right side up on last shell made, insert hook through back loop of first of 9 dc in end of petal and through both loops of last dc on base, catch yarn and pull through all loops on hook (a sl st). (*Ch 1, sl st through back loop of next dc on petal and on base) 8 times. Join next 5 petals in same manner. Tack tips of petals together in groups of three.

ARRANGEMENT OF COLORS: This suggested color layout will make each slipper different—serve as identification if goblets are removed from the table to be refilled. Each set will use the same amount of yarn. A ball each of the 4 colors will make 3 complete sets. Place petals around each slipper in following order: Ivory base—Blue, Green, Ivory, Tearose, Green, Ivory. Blue base—Blue, Ivory, Green, Tearose, Ivory, Green. Green base—Blue, Tearose, Green, Blue, Tearose, Ivory. Tearose base—Blue, Green, Tearose, Blue, Ivory, Tearose.

Many other color layouts may appeal to you—try them; you'll like the way these coasters will save the table. A set of plain goblets with slippers on, in a fancy box, will make an attractive gift, or a low cost bazaar item.

MAT

A set of goblet slippers and the mat shown here makes an even more attractive gift. The Mat will serve to absorb the condensation from a pitcher • also can be used as a Hot Plate Mat, at the table.

Make petals as for top of slippers. Repeat first two rows of slipper base for center. Fasten off. Tack petals around edge of center. Join Tearose for edge in back loop of first 9 dc on end of one petal, * (ch 1, sl st in next dc) 8 times, sl st in first of 9 dc on end of next petal. Repeat from * around. Fasten off.

GOBLET SLIPPERS



COASTERS—to slip on the foot of a goblet; to absorb condensed moisture and prevent rings on the table. Made in two layers—the top is split to receive the glass foot.

MATERIALS: 1 Ball Enterprise Yarn will make four to five goblet slippers in a single color.

An interesting set made in colors to match the assorted Pastel colors of luncheon dishes is suggested in the instructions. With the petals in more vivid shades of Red, Blue, Green and Gold on a White base, the goblets will match popular Fiesta ware. A ball of each of the colors will make several sets of slippers.

TOP PETALS: Make 6 of each color. Ch 7, making first st extra long, sk first st, sc in next 2, hdc in next 2, 2 dc in next, 9 dc in end st. Work on opposite side of ch, make 2 dc in next st, hdc in next 2, sc in next 2. Cut yarn 2 in. from work, insert hook in first sc, catch yarn through all loops on hook, pulling tight. Fasten off on back of each petal.

BASE: Make one in each color. Ch 5, sl st to form a ring. Ch 1, 8 sc in ring. Work following rows in back loops of sts as follows: Sl st in first sc, ch 3, 2 dc in same st, (3 dc in next sc) 7 times, sl st in 3-ch, ch 1, sc in same st, (sc in next dc, 2 sc in next) repeat around (36 sc, counting first 1-ch). Sl st in 1-ch, * (3 dc, 3 tr and 3 dc) in back loop of next third sc, sc in back loop of next third sc. Repeat from * 5 times. Turn, place one petal (see color arrangement below) right side up on last shell made, insert hook through back loop of first of 9 dc in end of petal and through both loops of last dc on base, catch yarn and pull through all loops on hook (a sl st). (*Ch 1, sl st through back loop of next dc on petal and on base) 8 times. Join next 5 petals in same manner. Tack tips of petals together in groups of three.

ARRANGEMENT OF COLORS: This suggested color layout will make each slipper different—serve as identification if goblets are removed from the table to be refilled. Each set will use the same amount of yarn. A ball each of the 4 colors will make 3 complete sets. Place petals around each slipper in following order: Ivory base—Blue, Green, Ivory, Tearose, Green, Ivory. Blue base—Blue, Ivory, Green, Tearose, Ivory, Green. Green base—Blue, Tearose, Green, Blue, Tearose, Ivory. Tearose base—Blue, Green, Tearose, Blue, Ivory, Tearose.

Many other color layouts may appeal to you—try them; you'll like the way these coasters will save the table. A set of plain goblets with slippers on, in a fancy box, will make an attractive gift, or a low cost bazaar item.

MAT

A set of goblet slippers and the mat shown here makes an even more attractive gift. The Mat will serve to absorb the condensation from a pitcher • also can be used as a Hot Plate Mat, at the table.

Make petals as for top of slippers. Repeat first two rows of slipper base for center. Fasten off. Tack petals around edge of center. Join Tearose for edge in back loop of first 9 dc on end of one petal, * (ch 1, sl st in next dc) 8 times, sl st in first of 9 dc on end of next petal. Repeat from * around. Fasten off.

Repeat from * 5 times. Turn, place one petal (see color arrangement below) right side up on last shell made, insert hook through back loop of first of 9 dc in end of petal and through both loops of last dc on base, catch yarn and pull through all loops on hook (a sl st). (*Ch 1, sl st through back loop of next dc on petal and on base) 8 times. Join next 5 petals in same manner. Tack tips of petals together in groups of three.

ARRANGEMENT OF COLORS: This suggested color layout will make each slipper different—serve as identification if goblets are removed from the table to be refilled. Each set will use the same amount of yarn. A ball each of the 4 colors will make 3 complete sets. Place petals around each slipper in following order: Ivory base—Blue, Green, Ivory, Tearose, Green, Ivory. Blue base—Blue, Ivory, Green, Tearose, Ivory, Green. Green base—Blue, Tearose, Green, Blue, Tearose, Ivory. Tearose base—Blue, Green, Tearose, Blue, Ivory, Tearose.

Many other color layouts may appeal to you—try them; you'll like the way these coasters will save the table. A set of plain goblets with slippers on, in a fancy box, will make an attractive gift, or a low cost bazaar item.

MAT

A set of goblet slippers and the mat shown here makes an even more attractive gift. The Mat will serve to absorb the condensation from a pitcher • also can be used as a Hot Plate Mat, at the table.

Make petals as for top of slippers. Repeat first two rows of slipper base for center. Fasten off. Tack petals around edge of center. Join Tearose for edge in back loop of first 9 dc on end of one petal, * (ch 1, sl st in next dc) 8 times, sl st in first of 9 dc on end of next petal. Repeat from * around. Fasten off.

Repeat from * 5 times. Turn, place one petal (see color arrangement below) right side up on last shell made, insert hook through back loop of first of 9 dc in end of petal and through both loops of last dc on base, catch yarn and pull through all loops on hook (a sl st). (*Ch 1, sl st through back loop of next dc on petal and on base) 8 times. Join next 5 petals in same manner. Tack tips of petals together in groups of three.

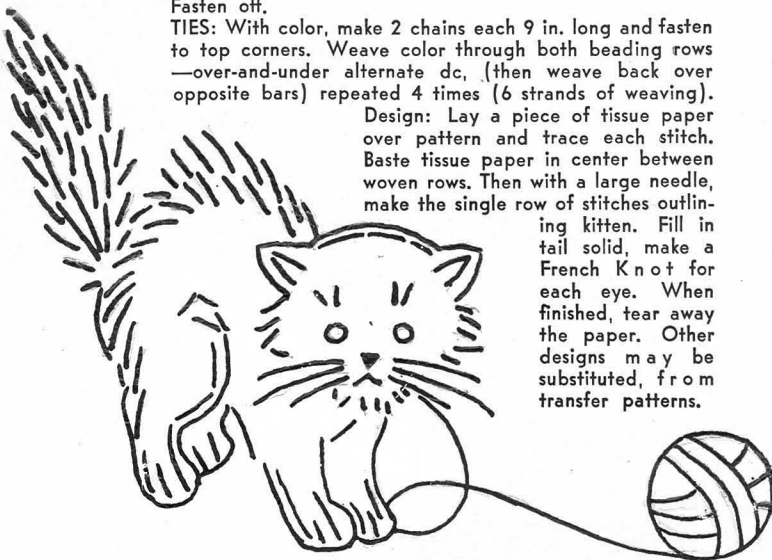
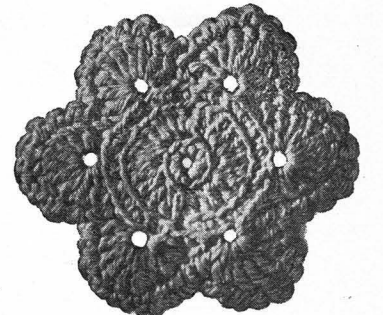
ARRANGEMENT OF COLORS: This suggested color layout will make each slipper different—serve as identification if goblets are removed from the table to be refilled. Each set will use the same amount of yarn. A ball each of the 4 colors will make 3 complete sets. Place petals around each slipper in following order: Ivory base—Blue, Green, Ivory, Tearose, Green, Ivory. Blue base—Blue, Ivory, Green, Tearose, Ivory, Green. Green base—Blue, Tearose, Green, Blue, Tearose, Ivory. Tearose base—Blue, Green, Tearose, Blue, Ivory, Tearose.

Many other color layouts may appeal to you—try them; you'll like the way these coasters will save the table. A set of plain goblets with slippers on, in a fancy box, will make an attractive gift, or a low cost bazaar item.

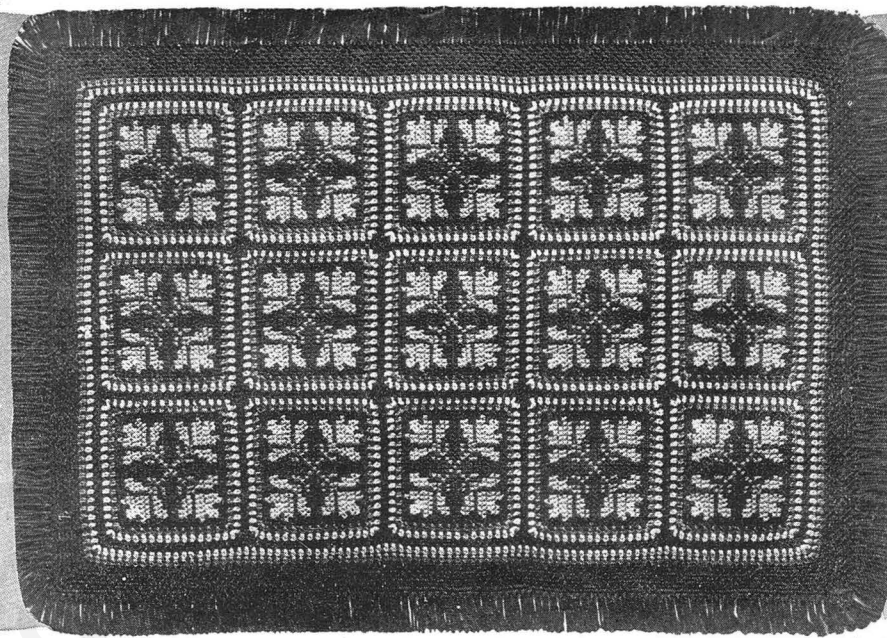
MAT

A set of goblet slippers and the mat shown here makes an even more attractive gift. The Mat will serve to absorb the condensation from a pitcher • also can be used as a Hot Plate Mat, at the table.

Make petals as for top of slippers. Repeat first two rows of slipper base for center. Fasten off. Tack petals around edge of center. Join Tearose for edge in back loop of first 9 dc on end of one petal, * (ch 1, sl st in next dc) 8 times, sl st in first of 9 dc on end of next petal. Repeat from * around. Fasten off.



*Stunts
With
Enterprise
Yarn*



ENTERPRISE
YARN
IS THE IDEAL
MATERIAL FOR
GADGETS LIKE
THOSE IN THIS
BOOK.

Most crocheters take great delight in building their own designs; in changing around to suit their own ideas, some instruction seen in print. The simple instructions in this book, in many cases can be used as the starting point for larger pieces to beautify the home.

On this page are a few ideas of stunts in crochet. Many more will come to you from a study of the designs in this book. Try them; you will enjoy doing it and the results will pleasantly surprise you.

MAKE RUGS FROM HOLDERS

In the lovely rug shown above, 15 squares made from the Spring Blossoms holder instructions are joined, and a crocheted border added. With the squares cross stitched in nursery designs, a rug for a child's room can be made in the same way. Crochet the squares to match any room color scheme. Directions for the border and joining are on page 9.

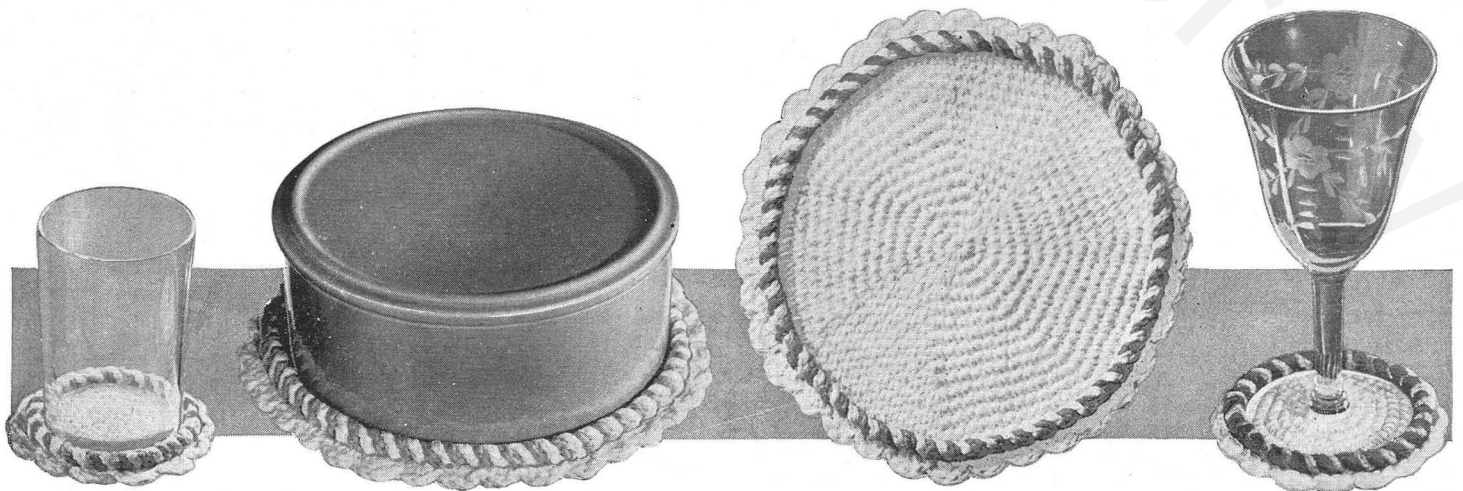
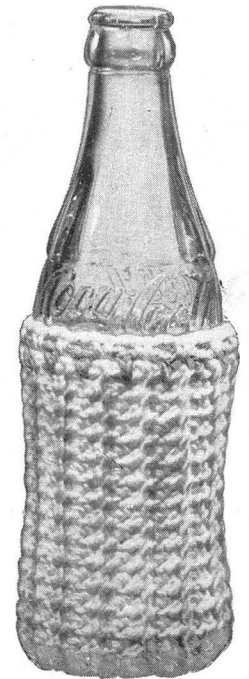
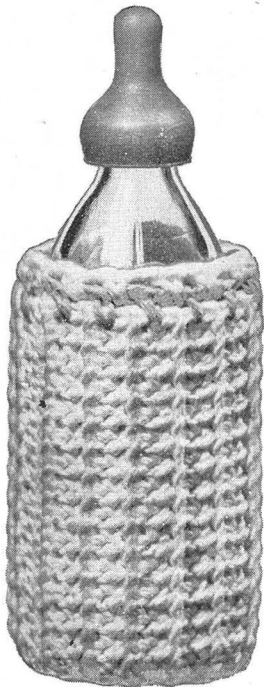
The Paddle Oven Mitt on page 17 made smaller or larger builds into holders or hot plate mats (see the picture on page 3).

JACKETS FOR BOTTLES

The "coke" bottle jacket at right is a much needed gadget where iced bottles are served—this is the glass jacket instructions on page 12 built up to the wanted height. At the left the same jacket serves to keep nursing bottles warm and can be made to fit 4, 6 or 8 ounce sizes.

COASTERS FOR ICE BOX DISHES

The coasters shown below made from the Roll Rim instructions on page 5 are used under cold dishes at the table as they come from the refrigerator, to absorb condensed moisture just as with glasses for iced drinks. This instruction will show how to make them from a tiny size for fruit or tomato juice glasses, to the largest, for ice box dishes. The same "coaster" will also serve as a "hot pad" for hot dishes, if desired.



SLIPPERS



HOT PLATE MATS



Wings to your Crochet Needle!

ENTERPRISE COTTON YARN
(The Sugar 'n Cream Yarn)
Works Up Like Lightning

only 5 or 6 stitches to the inch

Crochet decorative things for the home in a hurry with Enterprise Yarn. IT'S HEAVY—for faster crocheting, for rugs, hot pot holders and table mats that give maximum heat protection. IT'S ABSORBENT—for coasters, glass muffs—for baby things—being all cotton, it may be boiled to sterilize. IT'S SOFT—for the luxurious bearskin rugs. Many who cannot wear wool like the feel of it for knitted garments.

Quick Crochet

TWO MORE BOOKS SHOWING GADGETS TO CROCHET FOR GIFTS AND BAZAARS OF ENTERPRISE THE SUGAR 'N CREAM YARN.

Ask your dealer for "Wings To Your Crochet Needle" and "Quick Crochet", both showing more than 40 things to crochet and knit, for gifts or personal use. A few of the subjects are pictured—you will find complete instructions for them and many beautiful and useful things in both books. If not available at your dealer, they will be mailed for 10c each—coin or stamps.

THE THREAD MILLS

Merchandise Mart

Chicago 54

BABY BIBS



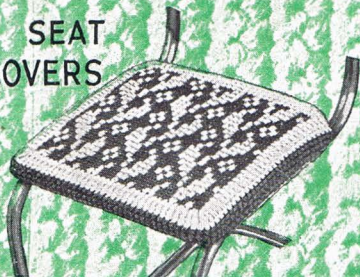
MID-RIFLE SWEATER



PLACE MATS



SEAT COVERS



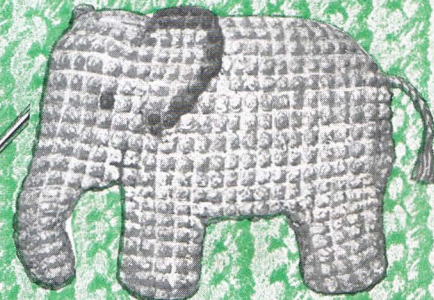
SOAKERS



HAND BAGS

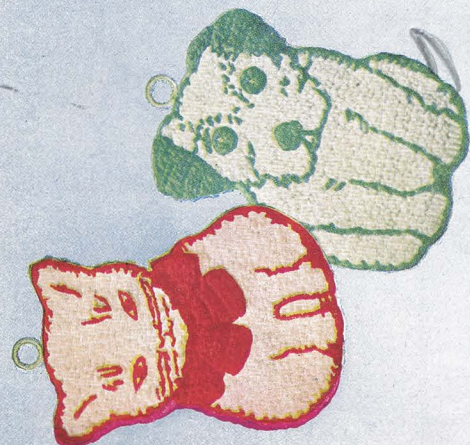


TOYS



RUGS





CATS AND DOGS

Not raining! but cute Hot Pot Holders that will attract attention and be serviceable too. They are to be padded and lined to cover the joining of the head and body, for added protection.

MATERIALS: A ball of White Enterprise Yarn and 30 yds. of color for a pair.

CAT—BODY: With White, ch 25, sc in second st from hook, (ch 1, sk 1, sc in next) twice, hdc in 2 sts, dc in 2, sk 1, sc in 3, sk 1, hdc, dc in 2, hdc, sk 1, sc, ch 1, sk 1, sc in next, ch 1, 2 sc in end st.

ROW 2: Ch 2, sc in last sc, (ch 1, sc in next) 3 times, (ch 1, sk 1, sc in next) 7 times, ch 1, 2 sc in end.

NOTE: The abbreviation ptn or ptna = pattern or pattern across mentioned in following rows means (ch 1, sc in next sc) to be worked between increases or decreases at end of rows. Turn to start each succeeding row.

ROW 3: Ch 2, sc in last sc, ptna, with 2 sc in end. Repeat this row 3 times.

ROW 7: Ch 1, sc in last sc, ptna. Repeat 4 times.

ROW 12: Ch 1, sc in last 2 sc, ptna to second from end, sc in end.

ROW 13: Ch 1, sk last sc, sc in next, ptn to second sc from end, sl st in end. Repeat Rows 7 and 13.

EDGE: Ch 1, 2 sc in last sc, ptn to end, 2 sc in end. Repeat Rows 12, 13, 7 and 13. Fasten off.

EDGE: Work around (except across top) as Edge on Dog.

HEAD: With White, ch 14, 2 sc in second st from hook, ch 1, sk 1, sc in next, hdc in 2, dc in 3, holding last loop of each on hook, thread over and pull through all 4 loops at once (a cluster), hdc in 2, sc, ch 1, 2 sc in end st.

ROW 2: Ch 2, 2 sc in last sc, (ch 1, sc in next) twice, (ch 1, sc in next second st) 3 times. Ch 1, sc in next, ch 1, 2 sc in end.

ROW 3: Ch 2, sc in last sc, ptna.

ROW 4: Ch 1, 2 sc in last sc, ptna, 2 sc in end.

ROW 5: Ch 1, sc in last sc, ptna. Repeat 3 times.

Continued on Page 14



FLOWERS

Another holder that is different—made double to slip over Hot Pot handles like the holders for saddles of grandma's time. The decorations are crocheted and applied on the crocheted body.

MATERIALS: Each holder will use 50 yds. of background color (White or Ivory); 18-20 yds. of flower pot and edge if in same color; 5 yds. each of Lt. Blue and Med. Green for the Flowers and stems; instructions call for colors shown with Ivory background but may be changed to your favorite combination.

SIDES: In Ivory, ch 34, sc in second st from hook, (ch 1, sc in next second st) 16 times. * Ch 1, turn, (ch 1, sc in next) 16 times. Repeat from * 16 times. **POINT**—Ch 1, turn, sc in last sc, (ch 1, sc in next) 7 times, hdc in next. * Turn, skip hdc, sl st in sc, (ch 1, sc in next) across to second from end, hdc in next. * Repeat from * to * twice. Turn, skip hdc, sl st in sc, ch 1, sc in next. Ch 1, turn, sc in sc. Fasten off. Join again to center sc of last full row, (ch 1, sc in next sc) 8 times. Ch 1, turn, sc in last sc, (ch 1, sc in next sc) 6 times; hdc in next. Repeat from * to * 3 times. Turn, skip hdc, sc in sc. Fasten off.

EDGE: Turn and in Red, 3 sc in one lower corner, (ch 1, sc in next second st) around, 3 sc in each corner. Fasten off.

BASKET: In Red, ch 8, 7 sc on chain. Ch 3, turn, dc in each sc, with 2 dc in end sc. Ch 3, turn, dc in each dc, with 2 dc in end 3-ch. Ch 1, turn, sl st in last, (ch 1, sl st in next) 10 times. Cut 6" long and fasten off on back. Tack on center of one side 1/2" from bottom, leaving top edge free.

LARGE FLOWER: In Ivory, ch 2, 6 sc in starting st, sl st in first sc. Fasten off. Turn, sl st in Blue in sc, * (ch 2, hdc, ch 2, sl st) in same sc, sl st in next sc. Repeat from * 5 times. Fasten off. Sew over right corner of Basket.

LEAVES: In Green, * ch 7, skip last st, (sc, hdc, 2 dc, hdc and sl st) on chain. Repeat from *.

Fasten off. Sew out from top of flower.

Continued on Page 14



JACKETS FOR GLASSES

These one piece jackets will fit most standard and teed drink glasses—be they tall or short with square or rounded bottom corners, they will fit nicely and keep condensed moisture from soiling table and clothes.

MATERIALS: A ball of Enterprise Yarn in the body color will make four Jackets—about 5 yds. of color for trim on each. The stars pictured in color on white jacket are from the instructions on page 5, and give an idea of how the trim may be varied. Instructions are for the white jackets with colored trim. The bow decoration on colored Jackets are chains 48 sts long, tied into bow and tacked in place.

RING: With white ch 5, sl st in first st. Ch 1, 8 sc in ring, sl st in first sc. Fasten off. With white ch 26, sl st in one st of ring. Ch 1, turn, sk last st of ch, sc in next st, (ch 1, sc in next second st) 12 times, to measure approx. 3/4" in. from center of ring—for taller muffs, each 2 ch added to ch 26 equal 1/4 in.). [See pictures of Bottle Jackets on page 23.]

ROW 2: Ch 1, turn, work in back loop of sts only, for succeeding rows, sc in last sc, (ch 1, sc in next) 12 times. Ch 1, sl st in same sc on Ring (one rib complete).

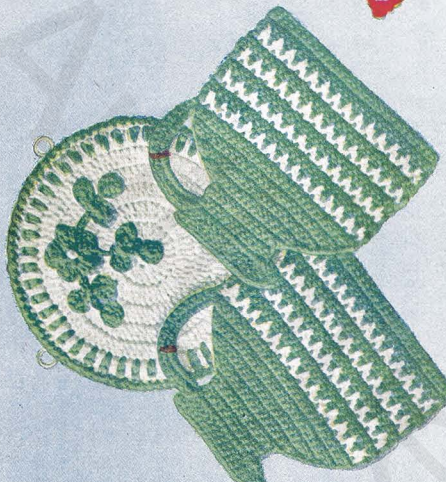
ROW 3: Ch 1, turn, sk last ch st, sc in next sc, (ch 1, sc in next sc) 12 times. Repeat Rows 2 and 3 until 16 ribs in all are complete, joining to next sc on Ring every fourth row. Fasten off. Sew on wrong side.

To make jackets with vertical stripes of color: work Row 2 to the ch-1 before joining to the Ring, pick up color for stripe, draw through st on Ring and loop on hook at same time to complete the st to Ring and continue as above to desired stripe width. Join next color in same way.

TOP EDGE: With color work sc between first 2 ribs made, (ch 2, sc between next 2 ribs) 15 times. Ch 2, sl st in first sc. Fasten off.

ROW 2: Join white with sc in first ch-2 sp, (ch 2, sc in next ch-2 sp) 15 times. Ch 2, sl st in first sc. Fasten off.

See page 23 for a nursing bottle and coke bottle jacket made from this instruction.



JUGS ON A RACK

Like the traditional little brown jug, these too will serve their purpose—padded and lined they make lovely holders and will be attractive in any color to match the kitchen trim. The rack is an added touch that will make the set an ideal gift. The same rack will serve as a stand for a hot teapot at the table; or under hot dishes will protect the table—omit the floral decoration and books when made for a table mat.

MATERIALS: A ball of color to match the kitchen color scheme and a ball of White (or Ivory) will make the pair of holders and the rack—the rack may be used with many of the other holders shown throughout this book—or without the floral motif as a hot pad at the table. 45 yds. White or Ivory and 25 yds. color will be used for the rack.

RACK: Approximately 7" diameter. In White (or Ivory), ch 2, 8 sc in first st. In back loops, (sl st, ch 3, 2 dc) in first sc, (3 dc in next) 7 times, sl st in first 3-ch.

ROW 3: Ch 3, dc in same st, (2 dc in both loops of next dc) around and join.

ROW 4: Ch 3, dc in next dc, (2 dc in next, dc in 2) around and join.

ROW 5: Ch 3, dc in next 2 dc, (2 dc in next, dc in 3) around and join.

ROW 6: Ch 3, dc in next 3 dc, (2 dc in next, dc in 4) around and join.

ROW 7: Ch 1, sc in each dc around. Sl st in 1-ch. Fasten off.

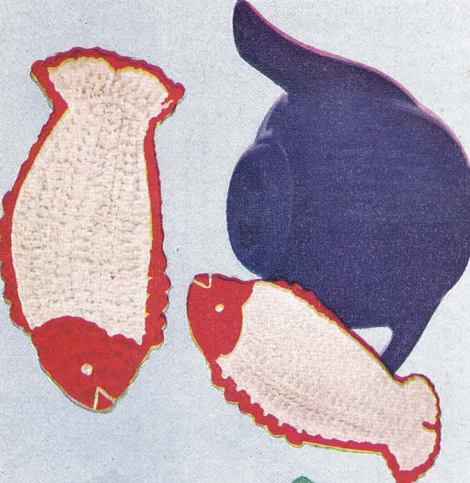
ROW 8: In Color, sc in 1 sc, (a long sc over next sc, inserting hook at base of sc into row below, sc in next sc) around, join and fasten off.

ROW 9: In White, sc in 1 long sc, (a long sc over next sc, sc in next long sc) around, join and fasten off.

ROW 10: In Color, sl st in 1 sc, (ch 1 sl st in next st) around. Fasten off.

FLOWER: In Color, * ch 4, (dc, ch 3, sl st) in fourth st from hook. Repeat from * 4 times. Sl st at base of first petal. Fasten off. Make a large French Knot in center.

Continued on Page 14



FISH

A small, compact holder to slip over the long handles of hot pots and pans when it's open at the tail or by sewing further around the tail to leave a smaller opening, it will hang on the handle of hot tea pots at the table as pictured.

MATERIALS: A ball of white and approximately 35 yds. of colored Enterprise Yarn will make a pair.

TEAPOT HOLDER

HEAD: In color, ch 2, 2 sc in starting st. Ch 1, turn, 2 sc in each sc. Ch 1, turn, 2 sc in last, sc in next, sc in end sc. Ch 1, turn, sc in last 4, 2 sc in next 2, 2 sc in end. Ch 1, turn, sc in last 4, 2 sc in next, sc in 2. Ch 1, turn, sc in 2, sc 2 sc in next, sc in 3, 2 sc in next, sc in end. Ch 1, turn, sc in 2, 2 hdc in next, sl st, sc in next 6. Ch 1, turn, sc in 2, 2 sc in next, sc in 2, sl st in next. Ch 1, turn, sk sl st, sc, hdc, 2 dc in next, dc in 3. Fasten off.

BODY: In White, ch 29, sk last st, sc in next 4, hdc in 5, * dc in 4, dc in 2, holding the last loop of each of the 2 dc on hook, thread over and pull through all 3 loops on hook at once (a Cluster). Repeat from *. Dc in 4 sts, (dc in remaining 3) made into a Cluster.

ROW 2: Ch 2, turn, hdc in last 3, dc in 10, hdc in 6, sc in 4, 2 sc in end.

ROW 3: Ch 1, turn, 2 sc in last st, sc in 23, 2 sc in end.

ROW 4: Ch 1, turn, skip last sc, sc in 26.

ROW 5: Ch 1, turn, skip last, sc in 4 sc, hdc in 6, dc in 10, hdc in 3, sc in 1, sl st in end.

ROW 6: Ch 2, turn, skip sl st, (hdc in 5 sts, 2 hdc in next) twice, hdc in 7, sc in 4, sl st in end.

ROW 7: Ch 1, turn, skip sl st, sc in 5, hdc in 10, 2 hdc in next, hdc in 8.

ROW 8: Ch 2, turn, hdc in last 6, dc in 4, 2 dc in next, dc in 4, hdc in 4, sc in 5, sl st in end.

ROW 9: Ch 1, turn, skip sl st, sc in 25. Fasten off.

TAIL: In White, ch 14, skip last 4, dc in next 4, 2 dc in next, dc in 5. Ch 3, turn, dc in last 2, dc in next, dc in next, hdc in next, ch 1, sl st in next, ch 1, hdc in next, 2 dc in next, dc in next, 2 dc in next, dc in 2 sts. Fasten off. The right side of last row of each piece is right side of front.

Continued on Page 14