

## The Antique Pattern Library

For more information, please see our website at: <http://www.antiquepatternlibrary.org>



This is a scan of an antique book that is, to the best of our knowledge, in the public domain. The scan itself has been photo-edited for readability, and is licensed under the **Creative Commons** Attribution-NonCommercial-ShareAlike License. To view a copy of this license, visit <http://creativecommons.org/licenses/by-nc-sa/2.5/> or send a letter to Creative Commons, 559 Nathan Abbott Way, Stanford, California 94305, USA.

You may share copies or printouts of this scan freely. You may not sell copies or printouts.

Donated by

Dindi Gelfi

09.2008

Album di Disegni  
PER RICAMO

A COLORI

**DONO RICORDO**  
DELLA DITTA

**E. FRETTE & C.**



**MONZA**

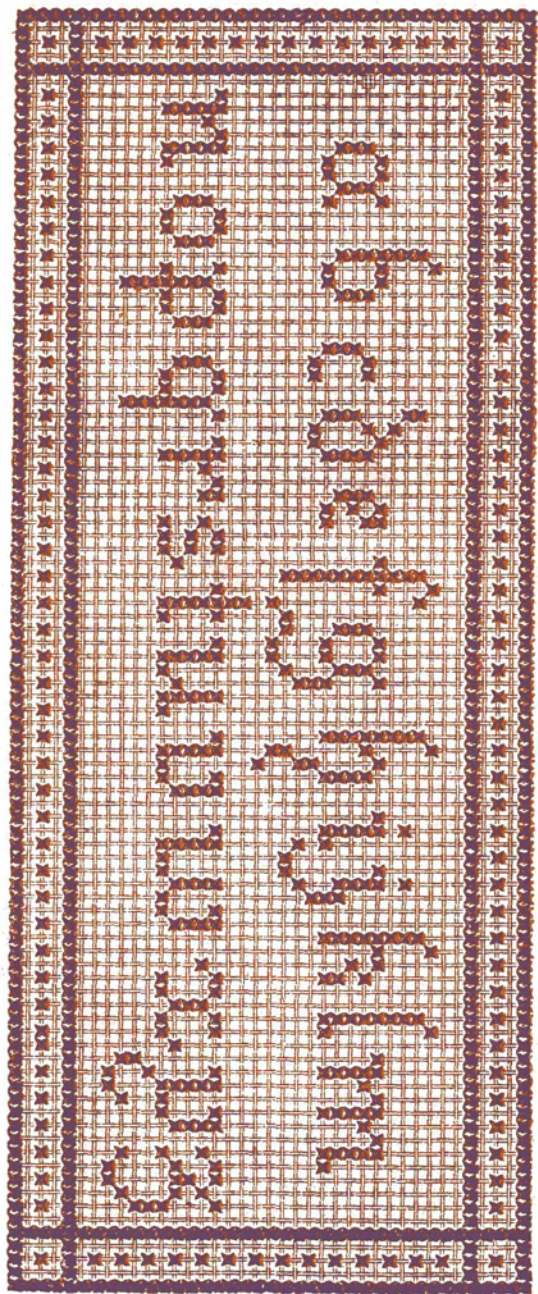
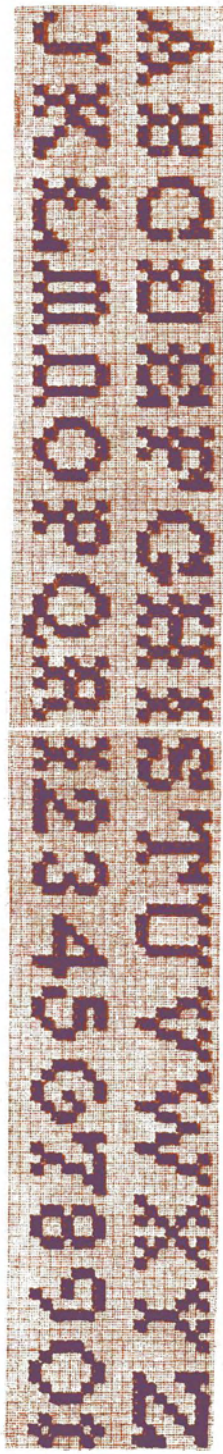
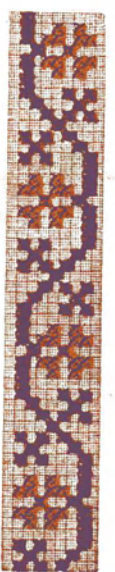
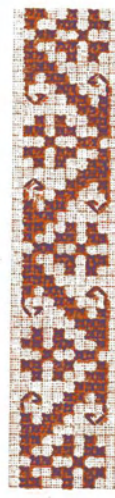
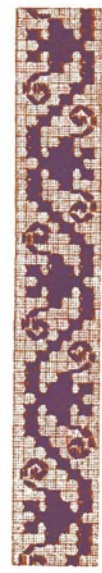
MILANO-ROMA

*Ai suoi Clienti*

La Casa E. Frette & C. venne fondata nel 1860 dal Sig. Cav. Edmondo Frette. Essa si occupa della fabbricazione di Telerie e Tovaglierie per Stabilimenti e Famiglie.

La Sede principale della Casa E. Frette & C. è in Monza (Via Italia), dove si trovano i Magazzini di deposito, gli Uffici di corrispondenza, di spedizione ed un negozio per la vendita di presenza. Ha filiali a Milano, Via Manzoni 46, e a Roma, Via Nazionale 84-85; inoltre tiene fabbriche proprie e cioè: Stabilimento di Tessitura meccanica a Sovico (Brianza), di tessitura a mano a Concorezzo (Brianza) e di Candeggio a Monza. È da anni fornitrice della Real Casa, di S.A.R. la Duchessa di Genova (Madre), delle principali Amministrazioni Civili e Militari, della R. Marina, del R. Esercito, della Navigazione Generale Italiana ecc. ecc.

Sebbe la Medaglia d'Oro all'Esposizione di Milano 1881, di Torino 1884, Mondiale Vaticana 1888 ed infine il Gran Diploma d'Onore (la più alta onorificenza industriale) all'Esposizione Italo-Americana di Genova 1892 per avere per la prima in Italia introdotto e perfezionato l'articolo delle Tovaglierie fine, imitazione Fiandra, in modo da soddisfare qualunque esigenza. »



MILANO

E. FRETTE E C. - MONZA

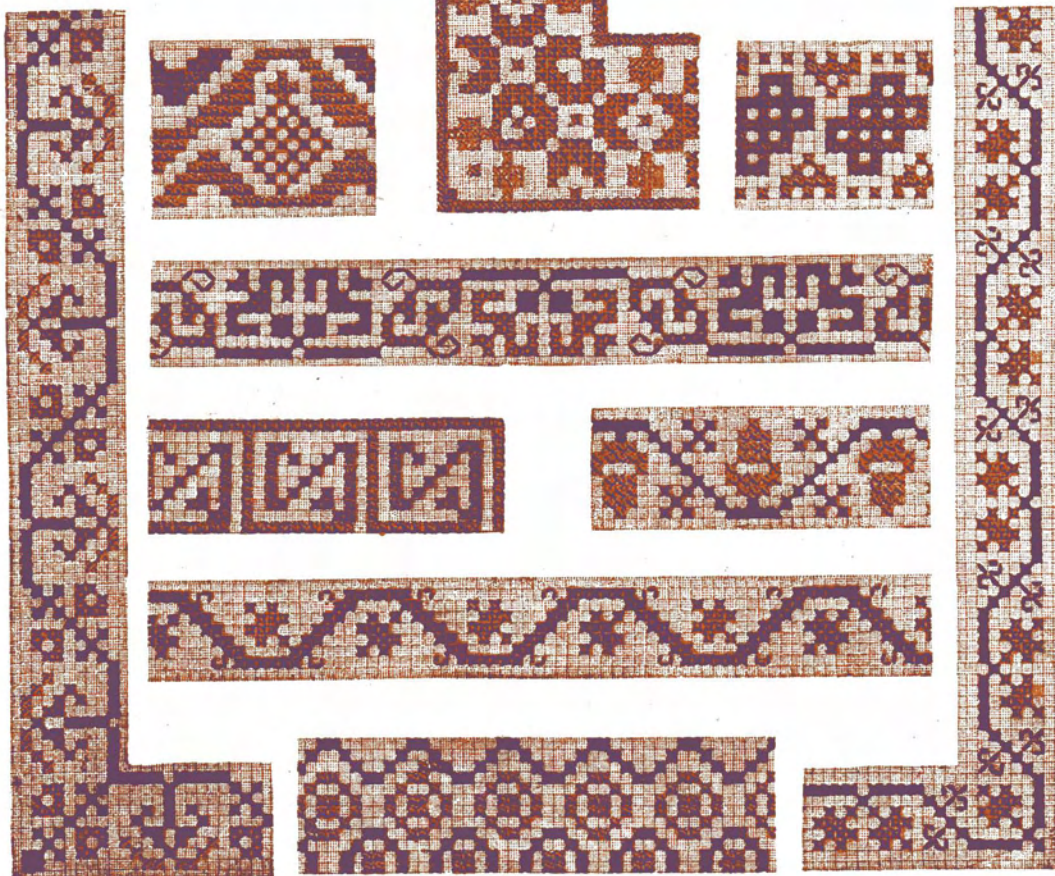
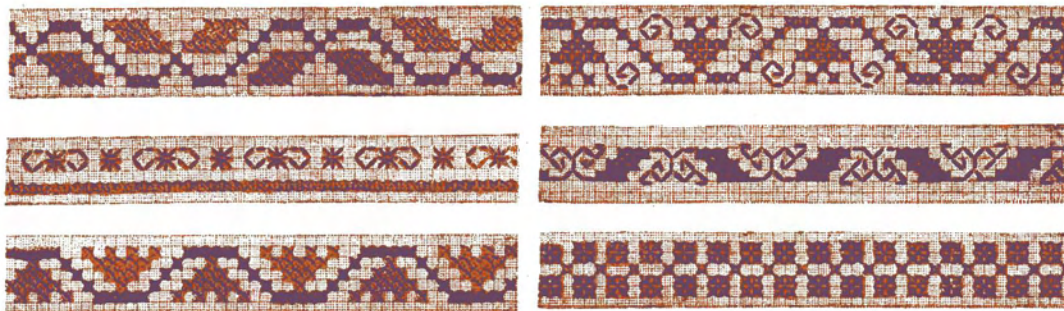
ROMA



MILANO

E. FRETTE E C. - MONZA

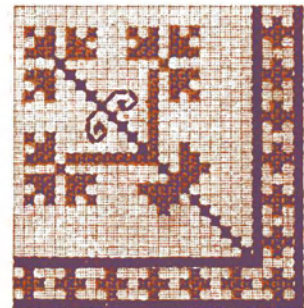
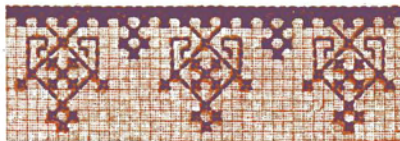
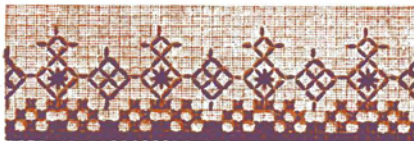
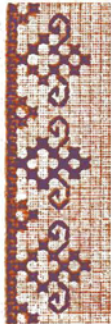
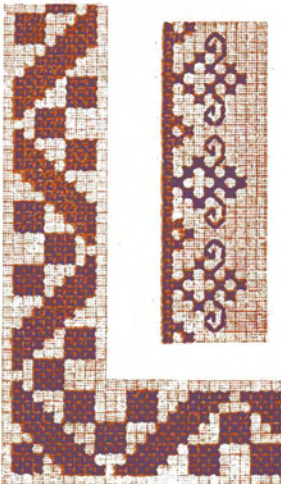
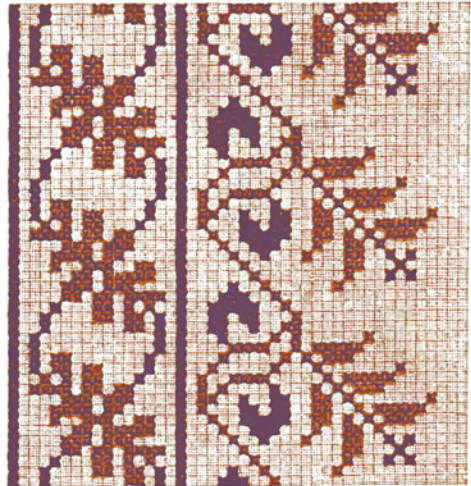
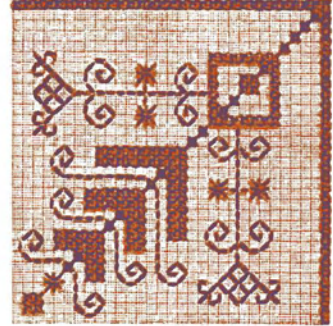
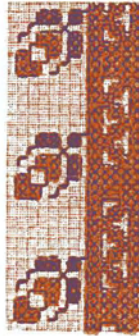
ROMA



MILANO

E FRETTE E C. - MONZA

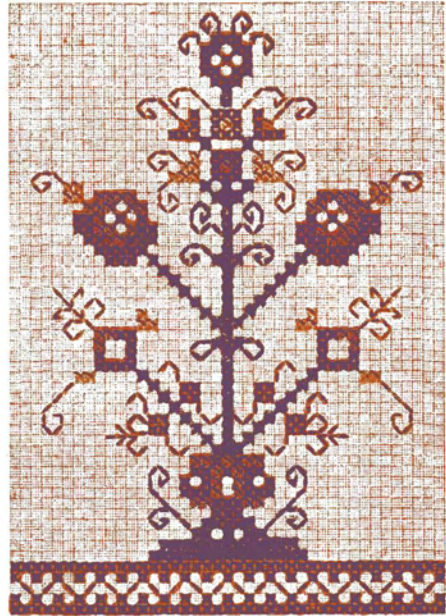
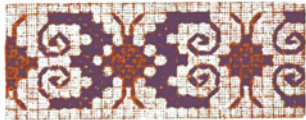
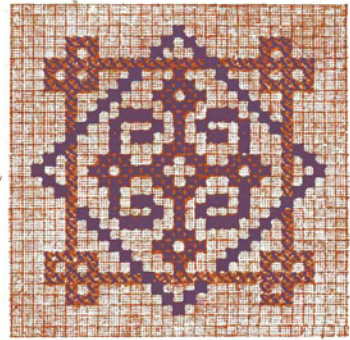
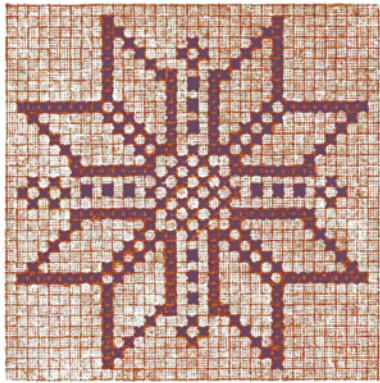
ROMA



MILANO

E. FRETTE E C. - MONZA

ROMA

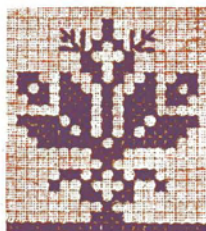
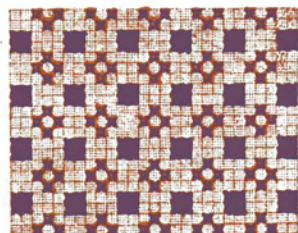
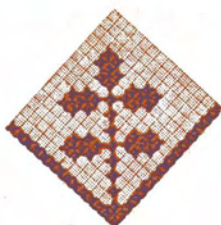
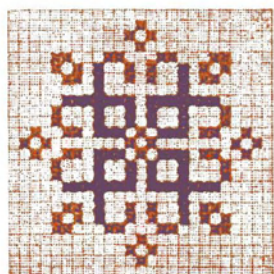
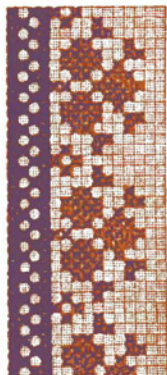
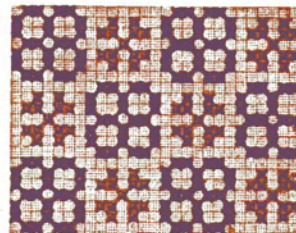
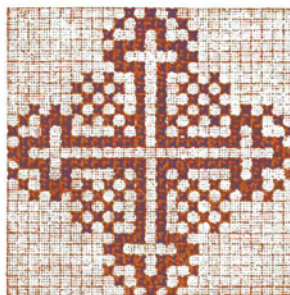


MILANO

E. FRETTE E C. - MONZA

ROMA

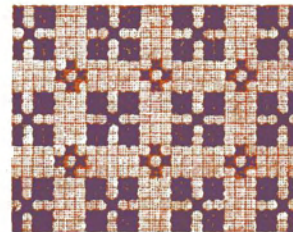
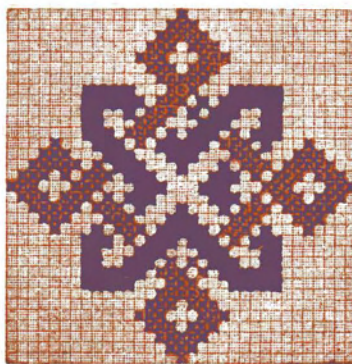
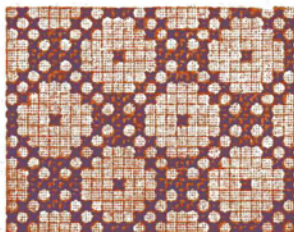
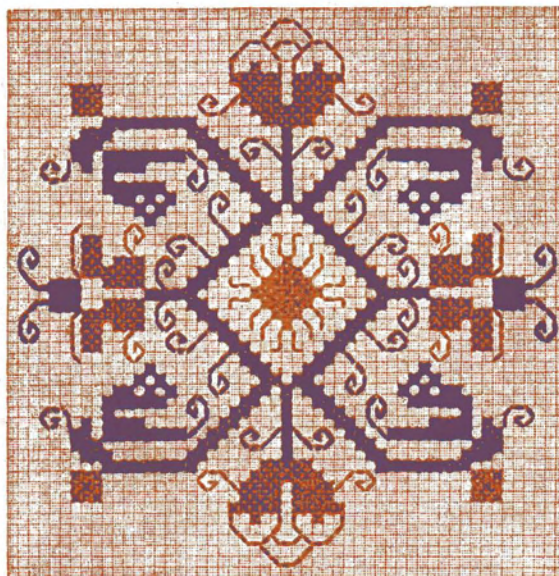
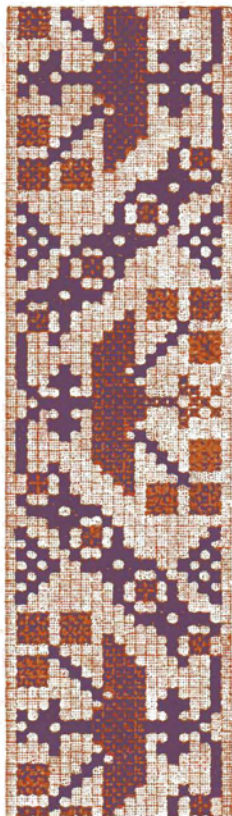
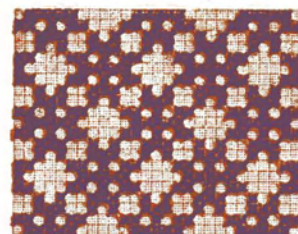
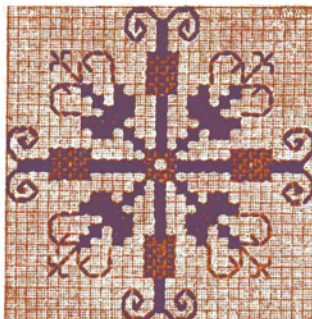
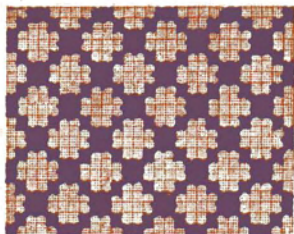




MILANO

E. FRETTE E C. - MONZA

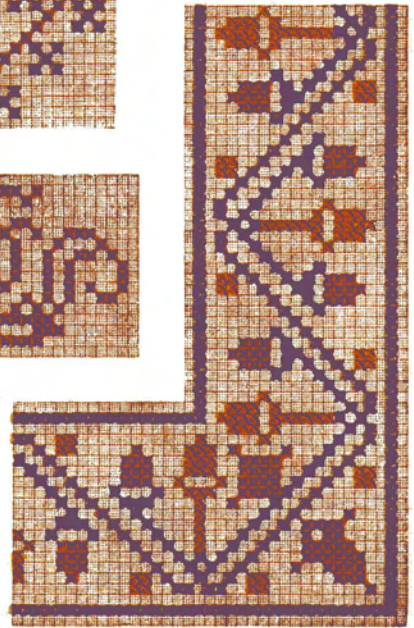
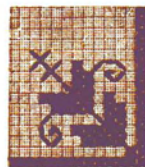
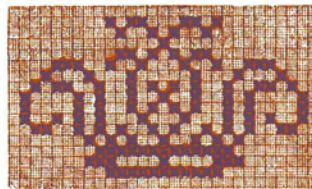
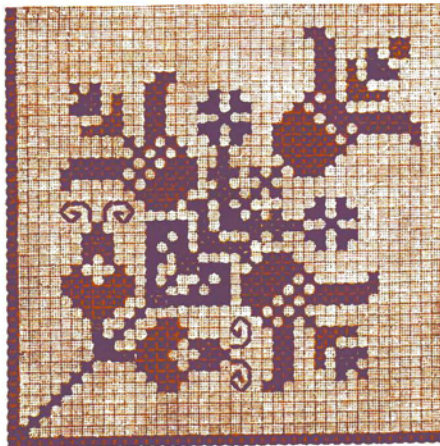
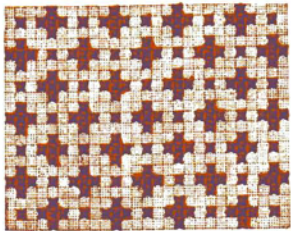
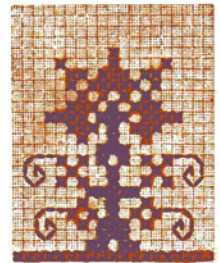
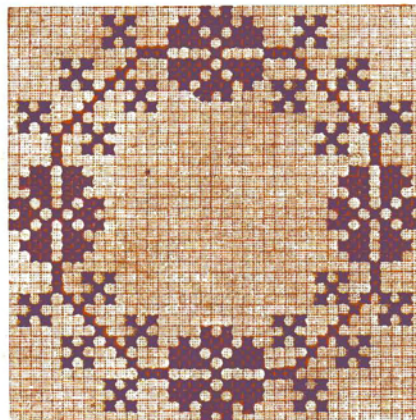
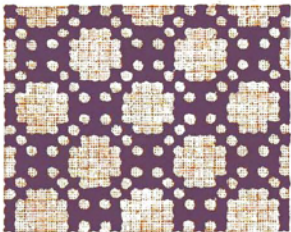
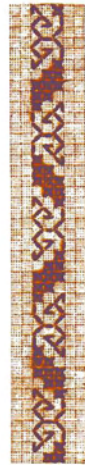
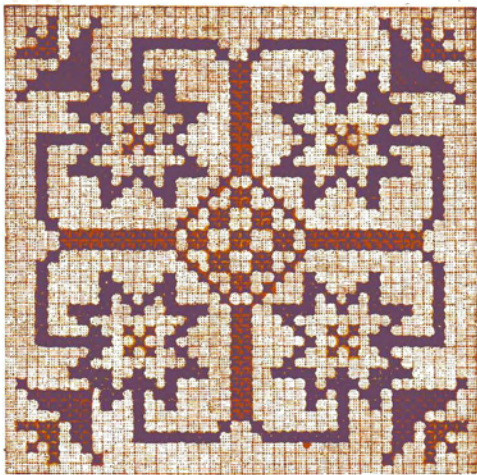
ROMA



MILANO

E. FRETTE E C. - MONZA

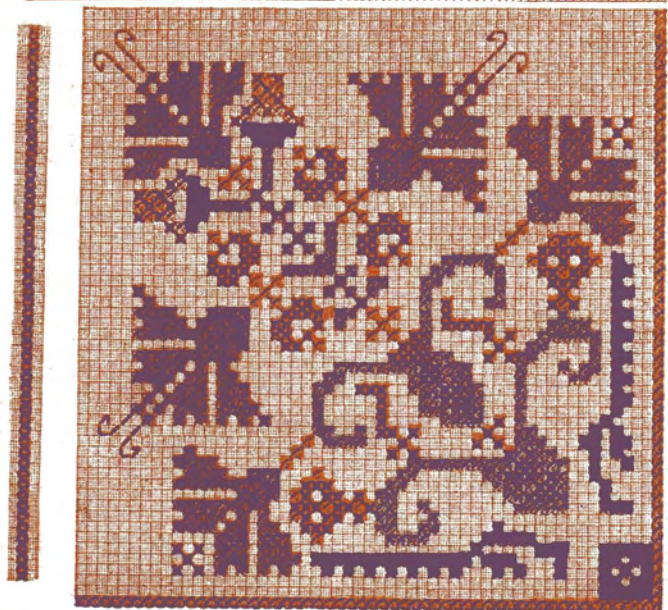
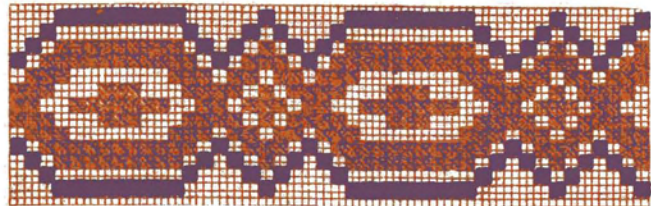
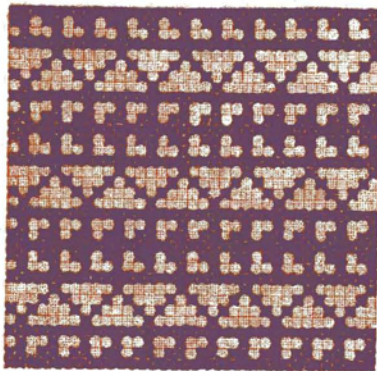
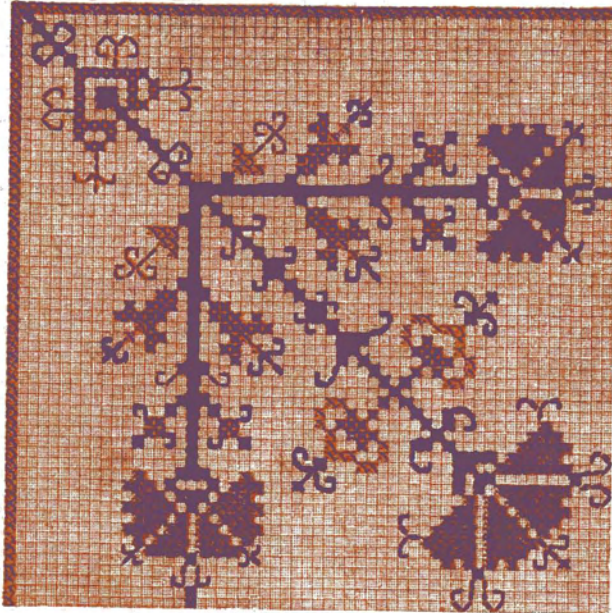
ROMA



MILANO

E. FRETTE E C. - MONZA

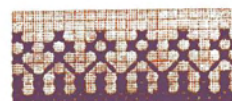
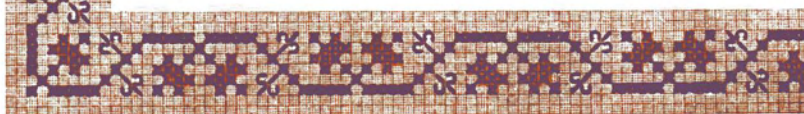
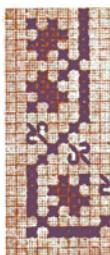
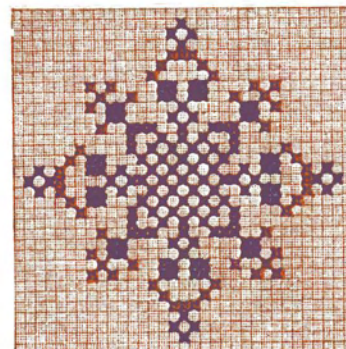
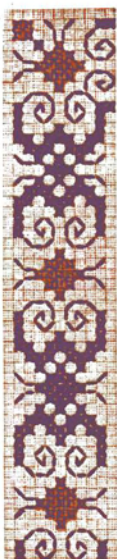
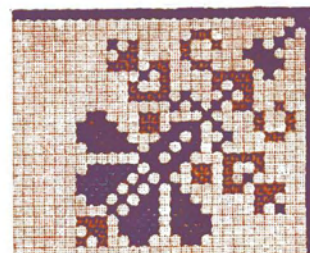
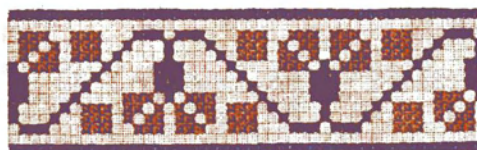
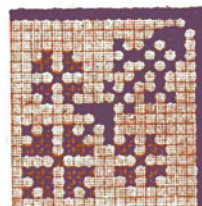
ROMA



MILANO

E. FRETTE & C. - MONZA

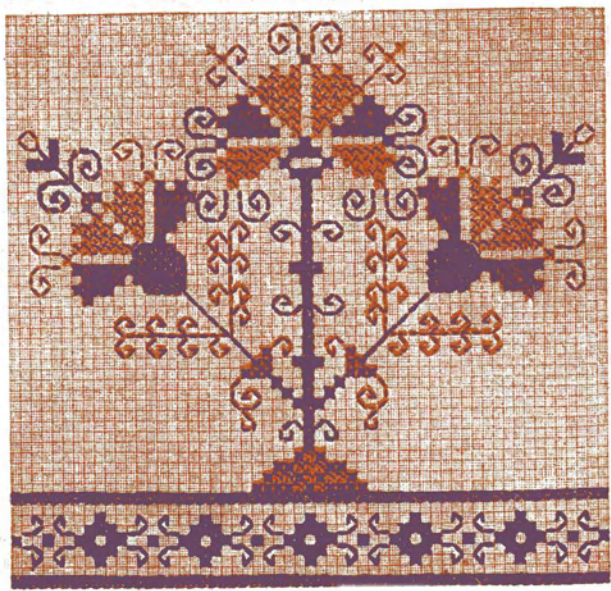
ROMA



MILANO

E. FRETTE E C. - MONZA

ROMA



MILANO

E. FRETTE E C. - MONZA

ROMA