

Antique Pattern Library

For more information, please see our website at: <http://www.antiquepatternlibrary.org>

This is a scan of an antique book that is, to the best of our knowledge, in the public domain. The scan itself has been edited for readability, and is licensed under the **Creative Commons** Attribution-NonCommercial-ShareAlike License. To view a copy of this license, visit <http://creativecommons.org/licenses/by-nc-sa/2.5/> or send a letter to Creative Commons, 559 Nathan Abbott Way, Stanford, California 94305, USA.

You may share copies or printouts of this scan freely. You may not sell copies or printouts.

Antique Pattern Library is a project of New Media Arts, Inc. <http://www.newmediaarts.org>, a nonprofit organization tax-exempt under IRC 501(c)(3). Donations may be tax deductible, depending on your tax status and tax jurisdiction.

Donated by

Judith Adele

FREE DISTRIBUTION ONLY - NOT FOR SALE

CLARK'S **O.N.T.**

J.&P. COATS

FLORAL DOILIES

BOOK No. 268

NEWEST IN

Floral Doilies

10¢



FD-437

New!

DECORATOR COLORS in *Size 20* CROCHET COTTON!



Once again Clark's O.N.T. is first to introduce colors in crochet cotton to carry out the color scheme in your home . . . and in a Size 20 thread that you will find fast-working and hard-wearing. Yes, this new Clark's O.N.T. Three Cord Crochet Cotton in Size 20 lives up to the high standard of all J. & P. Coats and Clark's O.N.T. Threads . . . the finest in the field!

Wild Rose Scallops

Illustrated on opposite page

FD-440

CENTER . . . Starting at center with Beauty Pink, ch 7. **1st rnd:** Dc in 7th ch from hook, (ch 3, dc in same ch) 4 times; ch 3. Join with sl st to 3rd ch of ch-7. **2nd rnd:** * In next sp make sc, half dc, 3 dc, half dc and sc, ch 1. Repeat from * around. Join and break off. **3rd rnd:** Attach Nile Green to center of any scallop, sc in same place, * ch 3, dc in next ch-1 sp, ch 3, sc in center of next scallop. Repeat from * around. Join. **4th rnd:** Ch 6, * sc in next sp, ch 3, dc in next dc, ch 3, sc in next sp, ch 3, dc in next sc, ch 3. Repeat from * around. Join. **5th rnd:** Ch 5, dc in next sp, ch 2, dc in next sp, * ch 2, dc in next dc, (ch 2, dc in next sp) twice. Repeat from * around. Join. **6th, 7th and 8th rnds:** Ch 6, dc in next sp, * ch 3, skip next sp, dc in next sp, ch 3, dc in next dc, ch 3, dc in next sp. Repeat from * around, ending with ch 3. Join to 3rd ch of ch-6. Break off at end of 8th rnd.

FLOWER . . . Starting at center with Beauty Pink, ch 6. Join with sl st to form ring. **1st rnd:** Ch 4, holding back on hook the last loop of each tr make 2 tr in ring, thread over and draw through all loops on hook (cluster made), sl st in first sp on Center, ch 4, sl st in ring on Flower, ch 4, cluster in ring, sl st in next sp on Center, ch 4, sl st in ring on Flower. Make 3 more clusters the same way (no more joinings). Join and break off. Make 11 more Flowers, joining to Center as

before, leaving 1 sp free between each Flower on Center.

Now work around as follows: **1st rnd:** Attach Nile Green to center petal on any flower, sc in same place, * ch 7, sc in next petal, tr in next sp on Center, sc in first free petal on next flower, ch 7, sc in next petal. Repeat from * around. Join. **2nd rnd:** Sc in same place as sl st, * 9 sc in next sp, sc in next tr, 9 sc in next sp, sc in next sc. Repeat from * around. Join. **3rd rnd:** Ch 6, dc in same place as sl st, * ch 7, skip 9 sc, d tr in next sc, ch 7, skip 9 sc, in next sc make dc, ch 3 and dc. Repeat from * around. Join. **4th rnd:** Sl st in next sp, ch 6, dc in same sp, * ch 7, in next d tr make dc, ch 3 and dc; ch 7, skip next sp, in next sp make dc, ch 3 and dc. Repeat from * around. Join. **5th rnd:** Sl st in next sp, ch 6, dc in same sp, * ch 7, skip next sp, in next sp make (dc, ch 3) twice and dc; ch 7, skip next sp, in next sp make dc, ch 3 and dc. Repeat from * around. Join. **6th rnd:** Sl st in next sp, ch 6, dc in same sp, * ch 5, skip next sp, in next sp make dc, ch 3 and dc; ch 3, in next sp make dc, ch 3 and dc; ch 5, skip next sp, in next sp make dc, ch 3 and dc. Repeat from * around. Join. **7th rnd:** Sl st in next sp, sc in same sp, * ch 5, skip next sp, (in next sp make dc, ch 3, dc, ch 3) twice; in next sp make dc, ch 3 and dc; ch 5, skip next sp, sc in next sp. Repeat from * around. Join. **8th rnd:** Sc in same place as sl st, * sc in next sp, (ch 3, in next sp

make dc, ch 3 and dc) 5 times; ch 3, sc in next sp, sc in next sc. Repeat from * around. Join and break off.

MOTIF . . . Work as for Center until 4 rnds are completed. **5th rnd:** Ch 7, sc in next dc, ch 3, sl st in 3rd sp preceding any 3-sc group on Center, ch 3, sc in next dc on Motif, ch 3, dc in next sp on Center, skip 2 sps, dc in next sp, ch 3, sc in next dc on Motif, ch 3, sl st in next sp on Center, ch 3, sc in next dc on Motif, * ch 7, sc in next dc. Repeat from * around remainder of Motif. Join and break off. Make 11 more Motifs, joining to Center as before.

EDGING . . . **1st rnd:** Attach Green to first free loop on any Motif, sc in same place, (ch 9, sc in next loop) 8 times; * ch 5, skip 2 sps on Center, sc in next sp, ch 5, sc in first free loop on next Motif, ch 5, sl st in corresponding loop on preceding Motif, ch 5, sc in next loop on Motif in work, (ch 9, sc in next loop) 7 times. Repeat from * around, joining last loop on last Motif to first loop on first Motif, ending with sc in last loop on last Motif, ch 5, skip 2 sps on Center, sc in next sp, ch 5, sl st in first sc made. Break off. **2nd rnd:** Attach Pink to first ch-9 sp on any Motif, 14 sc in same sp, 14 sc in each of next 5 sps, * 7 sc in each of next 2 sps, 14 sc in each of next 6 sps. Repeat from * around. Join and break off. Starch lightly and press.

Wild Rose Scallops

Directions on page 2

FD-440

Choose any one of the J. & P. Coats or Clark's O.N.T. "Boilfast" Threads listed	Number of Balls	Milwards Steel Hook Numbers	Approximate Diameter
CLARK'S THREE CORD CROCHET COTTON, Article B.34, Size 20	1 No. 26-B Bright Nile Green 1 No. 65 Beauty Pink	No. 9	12 inches
CLARK'S THREE CORD CROCHET COTTON, Article B.34, Size 30		No. 10	10½ inches
J. & P. COATS SIX CORD CROCHET COTTON, Article A.104, Size 30			



Rose Bouquet

Illustrated on opposite page

FD-448

Choose any one of the J. & P. Coats or Clark's O.N.T. "Boilfast" Threads listed	Number of Balls	Milwards Steel Hook Numbers	Approximate Size
CLARK'S THREE CORD CROCHET COTTON, Article B.34, Size 20	2 No. 26-B Bright Nile Green 1 No. 65 Beauty Pink	No. 9	12 x 19½ inches
CLARK'S THREE CORD CROCHET COTTON, Article B.34, Size 30		No. 10	11 x 17½ inches
J. & P. COATS SIX CORD CROCHET COTTON, Article A.104, Size 30			

Starting at A on chart with Nile Green, ch 167. **1st row:** Dc in 8th ch from hook (sp made), * ch 2, skip 2 ch, dc in next ch. Repeat from * across. Ch 5, turn (54 sps). **2nd row:** Skip first dc, dc in next dc (sp made over sp), * 2 dc in next sp, dc in next dc (bl made over sp). Repeat from * across to within last sp, ch 2, skip 2 ch, dc in next ch. Ch 5, turn. **3rd row:** Make 1 sp, dc in next 3 dc (bl made over bl); (ch 2, skip 2 dc, dc in next dc) twice (2 sps made over 2 bls); make (1 bl, 2 sps) 5 times;

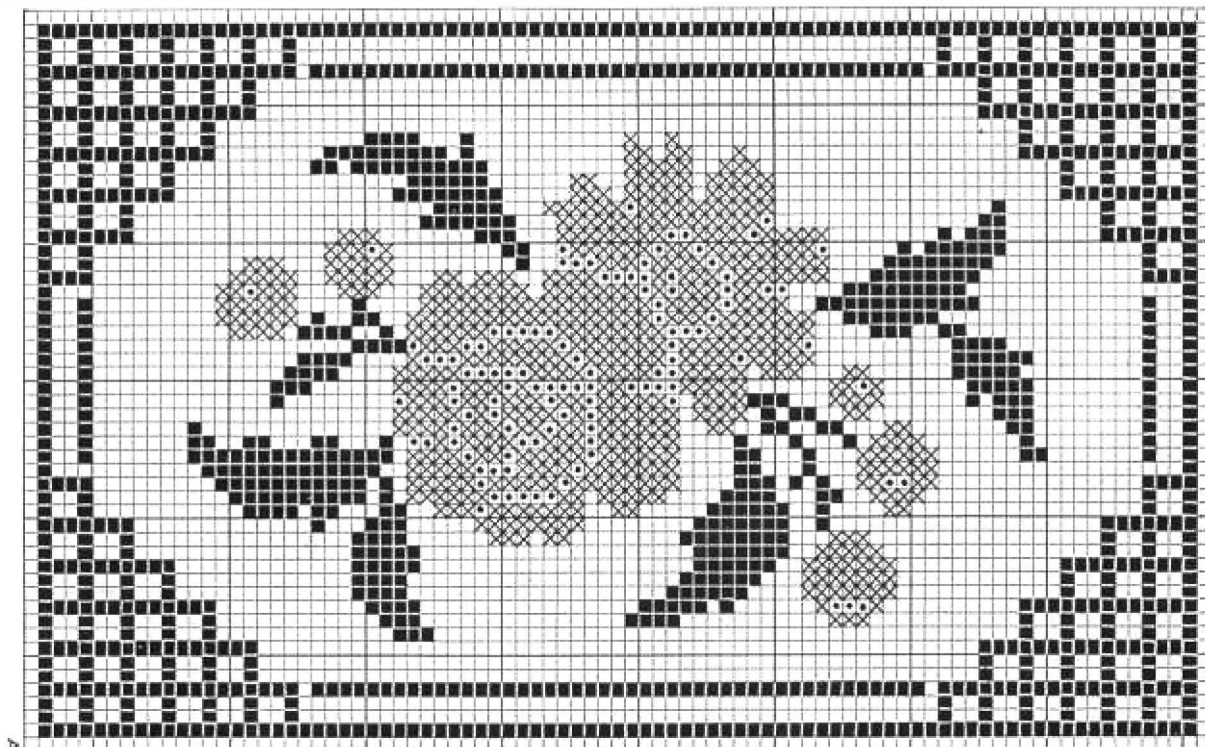
1 bl, 14 sps, (1 bl, 2 sps) 6 times; 1 bl, 1 sp. Ch 5, turn.

Starting with 4th row follow chart until 20 rows are completed. **21st row:** Make 1 sp, 1 bl, 16 sps, ch 2, drop Green, attach Pink and, working over Green in order to conceal it, make 2 bls, 2 dc in next sp, turning back on hook the last loop of next dc, make dc in next dc, drop Pink, draw Green loop through—always change colors in this manner—do not work over Pink, make 9 sps, 6 bls, 15 sps, 1 bl and 1 sp. Ch 5, turn. **22nd row:** Make 1 sp, 1 bl, 2 sps, 1 bl, 13 sps, 5 bls,

7 sps, ch 2, drop Green, pick up Pink, make 5 bls, drop Pink, pick up Green, make 13 sps, 1 bl, 2 sps, 1 bl and 1 sp. Ch 5, turn. Starting with 23rd row follow chart to top, changing colors as before, always attaching a separate strand of Pink for each new Flower and breaking off Pink at end of each Flower.

EDGING . . . Attach Green to any corner sp, 7 sc in same sp, 3 sc in each sp around, making 7 sc in each corner sp. Join and break off. Starch lightly and press.

There are 10 spaces between heavy lines



■ BEAUTY PINK BLOCK □ BRIGHT NILE GREEN SPACE ■ BRIGHT NILE GREEN BLOCK □ BEAUTY PINK SPACE



NOTE: *Illustrations are reproduced as faithfully as color printing permits. For actual thread colors check your favorite art needlework counter. Buy at one time the required quantity of each color number.*

Flower Cartwheel

Directions on opposite page

FD-441

Choose any one of the J. & P. Coats or Clark's O.N.T. "Boilfast" Threads listed	Number of Balls	Milwards Steel Hook Numbers	Approximate Diameter
CLARK'S THREE CORD CROCHET COTTON, Article B.34, Size 20	1 No. 49 Chartreuse 1 No. 123-A Flamingo 1 No. 181 Shaded Lt. Yellows	No. 9	11 inches
CLARK'S THREE CORD CROCHET COTTON, Article B.34, Size 30	1 No. 26-B Bright Nile Green 1 No. 46-B Beauty Rose - 1 No. 9 Yellow	No. 10	10 inches



FD-441 *Illustrated on page 6*

CENTER . . . Starting at center with Chartreuse, ch 8. Join with sl st to form ring. **1st rnd:** Ch 3, 15 dc in ring. Join with sl st to top of ch-3. **2nd rnd:** Ch 4, dc in same place as sl st, * ch 2, skip 1 dc, in next dc make dc, ch 1 and dc. Repeat from * around. Join to 3rd ch of ch-4. **3rd rnd:** * Ch 13, dc in 6th ch from hook and in each ch across, skip next sp, 2 sc in next sp, sl st in next dc. Repeat from * around. Join and break off. **4th rnd:** Attach thread to loop on end of any spoke, 4 sc in same loop, * ch 10, 4 sc in loop on end of next spoke. Repeat from * around. Join. **5th rnd:** Sc in same place as sl st, sc in each of next 3 sc, * 10 sc in next sp, sc in each of next 4 sc. Repeat from * around. Join. **6th rnd:** Sc in same place as sl st, * ch 4, skip 1 sc, sc in next sc. Repeat from * around, ending with ch 2, dc in first dc (56 loops). **7th, 8th and 9th rnds:** * Ch 4, sc in next loop. Repeat from * around, ending with ch 2, dc in dc.

10th rnd: Ch 4, tr in next loop, * ch 7, holding back on hook the last loop of each tr make tr in each of next 2 loops, thread over and draw through all loops on hook (joint-tr made). Repeat from * around. Join. **11th rnd:** Sl st to next sp, 8 sc in same sp, * ch 14, dc in 6th ch from hook and in each ch across, 8 sc in next sp. Repeat from * around. Join and break off.

FIRST FLOWER . . . Starting at center with Shaded Lt. Yellows, ch 4. **1st rnd:** 15 dc in 4th ch from hook. Join. **2nd rnd:** Sc in same place as sl st, * ch 5, sc in front loop of next sc. Repeat from * around. Join. **3rd rnd:** Sc in back loop of each dc on first rnd. Join and break off (16 sc). **4th rnd:** Attach Flamingo to any sc, * ch 10, sc in 6th ch from hook and in each ch across, sl st in next 2 sc. Repeat from * around. Join and break off. **5th rnd:** Attach Flamingo to loop on end of any spoke, ch 3, 10 dc in same loop, 6 dc in loop on end of next spoke, sl st in loop on end of any

spoke on Center, 5 dc in same loop on Flower, 6 dc in loop on end of next spoke, sl st in loop on end of next spoke on Center, 5 dc in same loop on Flower, 11 dc in each remaining loop around. Join and break off.

SECOND FLOWER . . . Work as for First Flower until 4th rnd is completed. **5th rnd:** Attach Flamingo to loop on end of any spoke, ch 3, 10 dc in same loop, 6 dc in loop on end of next spoke, sl st in corresponding dc on scallop following last joining on First Flower, 5 dc in same loop on Second Flower. Complete rnd as for First Flower, joining next 2 scallops to next 2 spokes on center as before.

Make 12 more Flowers, joining to previous Flowers and Center in same manner. Join last Flower to corresponding scallop on First Flower.

CENTER (Make 14) . . . Starting at center with Flamingo, ch 2. **1st rnd:** 15 sc in 2nd ch from hook. Join and break off. Sew a Center to each Flower. Starch lightly and press.

Tulip Varieties

Illustrated on Front Cover

FD-437

Choose any one of the J. & P. Coats or Clark's O.N.T. "Boilfast" Threads listed	Number of Balls	Milwards Steel Hook Numbers	Approximate Diameter
CLARK'S THREE CORD CROCHET COTTON, Article B.34, Size 20	1 each of No. 49 Chartreuse, No. 123-A Flamingo, No. 181 Shaded Lt. Yellows, No. 18 Shaded Lavenders, No. 15 Shaded Pinks	No. 9	17 inches
CLARK'S THREE CORD CROCHET COTTON, Article B.34, Size 30	1 each of No. 26-B Bright Nile Green, No. 46-B Beauty Rose, No. 18 Shaded Lavenders, No. 15 Shaded Pinks, No. 19 Shaded Yellows	No. 10	15 inches
J. & P. COATS SIX CORD CROCHET COTTON, Article A.104, Size 30			

CENTER . . . Starting at center with Chartreuse, ch 10. Join with sl st to form ring. **1st rnd:** Ch 3, 23 dc in ring. Join to top of ch-3. **2nd rnd:** Ch 5, dc in same place as sl st, * ch 3, skip next 2 dc, in next dc make dc, ch 2 and dc (shell made). Repeat from * around. Join to 3rd ch of ch-5. **3rd rnd:** Sl st in sp of next shell, ch 5, dc in same sp, * ch 6, skip next sp, in sp of next shell make dc, ch 2 and dc (shell made over shell). Repeat from * around. Join to 3rd ch of ch-5. **4th rnd:** Sl st in sp of next shell, ch 5, dc in same sp, * ch 4, sc in next sp, ch 4, make shell over next shell. Repeat from * around. Join. **5th rnd:** Sl st in sp of next shell, ch 5, dc in same sp, * ch 5, sc in next sc, ch 5, shell over shell. Repeat from * around. Join. **6th, 7th and 8th rnds:** Repeat 5th rnd making ch-6 between shells and sc's on 6th rnd; ch-7 on 7th rnd and ch-9 on 8th rnd. **9th rnd:**

Sl st in sp of next shell, ch 5, dc in same sp, * ch 6, sc in next sp, ch 9, sc in next sp, ch 6, shell over shell. Repeat from * around. Join. **10th rnd:** Sl st in sp of next shell, ch 5, dc in same sp, * ch 5, sc in next sp, ch 5, shell in center ch of next sp, ch 5, sc in next sp, ch 5, shell over shell. Repeat from * around. Join. **11th rnd:** Sl st in sp of next shell, ch 5, dc in same sp, * ch 5, sc in next sc, ch 5, shell over shell. Repeat from * around. Join. **12th to 20th rnds incl:** Repeat 11th rnd making 1 ch more between shell and sc on each rnd. Break off at end of 20th rnd.

TULIP—Center Petal . . . Starting at center with Shaded Lt. Yellows, ch 16. **1st row:** Sc in 2nd ch from hook, half dc in next ch, dc in next ch, tr in next 9 ch, dc in next ch, half dc in next ch, 3 sc in last ch. Now work in rnds as follows: **1st rnd:** Working

along opposite side of starting chain make sc in each ch across, 3 sc in side of end sc, sc in each st across. Join. **2nd rnd:** Ch 3, 3 dc in next sc, * dc in next 2 sc, 2 dc in next sc. Repeat from * around, making 3 dc in center sc of 3-sc group. **3rd rnd:** Ch 3, dc in next dc, 5 dc in next dc, * dc in next 3 dc, 2 dc in next dc. Repeat from * around, making 5 dc in center dc of next 3-dc group. Join and break off.

SIDE PETAL (Make 2) . . . Starting at center, ch 22. **1st row:** Sc in 2nd ch from hook, half dc in next ch, dc in next ch, tr in next 15 ch, dc in next ch, half dc in next ch, 3 sc in next ch, half dc in next ch, 3 sc in next ch.

Continued on page 12

Floral Temptation

Directions on page 10

FD-446

Choose any one of the J. & P. Coats or Clark's O.N.T. "Boilfast" Threads listed	Number of Balls	Milwards Steel Hook Numbers	Approximate Diameter
CLARK'S THREE CORD CROCHET COTTON, Article B.34, Size 20	2 No. 26-B Bright Nile Green	No. 9	16½ inches
CLARK'S THREE CORD CROCHET COTTON, Article B.34, Size 30	1 No. 123-A Flamingo 1 No. 181 Shaded Lt. Yellows		
J. & P. COATS SIX CORD CROCHET COTTON, Article A.104, Size 30	2 No. 26-B Bright Nile Green 1 No. 46-B Beauty Rose 1 No. 9 Yellow	No. 10	15½ inches





Heavenly Blue

Directions on page 12

FD-436

Choose any one of the J. & P. Coats or Clark's O.N.T. "Boilfast" Threads listed	Number of Balls	Milwards Steel Hook Numbers	Approximate Size
CLARK'S THREE CORD CROCHET COTTON, Article B.34, Size 20	1 No. 9 Yellow 1 No. 13 Shaded Blues 1 No. 8 Blue	No. 8	Motil measures 2 3/4 inches in diameter Place mat 15 1/2 x 19 inches Napkin 9 3/4 inches in diameter
CLARK'S THREE CORD CROCHET COTTON, Article B.34, Size 30		No. 10	Motil measures 2 1/2 inches in diameter Place Mat 12 1/2 x 16 inches Napkin 9 1/4 inches in diameter
J. & P. COATS SIX CORD CROCHET COTTON, Article A.104, Size 30			

Other Materials Required: 1/2 yard of blue linen, 36 inches wide.

NOTE: Illustrations are reproduced as faithfully as color printing permits. For actual thread colors check your favorite art needlework counter. Buy at one time the required quantity of each color number.

• 9 •

FD-443 *Illustrated on page 11*

CENTER—Large Flower . . . Starting at center with Yellow, ch 5. Join with sl st to form ring. **1st rnd:** 8 sc in ring. Join. **2nd rnd:** Picking up front loop only, in each sc around make (sc, ch 5) twice and sc. Join. **3rd rnd:** 2 sc in back loop of each sc around. Join. **4th rnd:** Repeat 2nd rnd. Join and break off. **5th rnd:** Attach White to back loop of any sc on 3rd rnd, sc in each sc around. Join. **6th rnd:** 2 sc in each sc around. Join. **7th rnd:** Sc in back loop of each sc around. Join. **8th rnd:** Sc in each sc around. Join (32 sc).

Now work Large Petals individually as follows:

FIRST PETAL . . . 1st row: Ch 1, 3 sc in front loop of same sc as sl st. Ch 1, turn. **2nd row:** 2 sc in each sc across. Ch 1, turn. **3rd, 4th and 5th rows:** 2 sc in first sc, sc in each sc across, 2 sc in last sc. Ch 1, turn. **6th and 7th rows:** Sc in each sc across. Ch 1, turn. **8th to 15th rows incl:** Dec 1 sc, sc in each sc across—to dec 1 sc, work off 2 sc as 1 sc. Ch 1, turn. **16th row:** (Work off 2 sc as 1 sc) twice. Ch 1, turn. **17th row:** Work off 2 sc as 1 sc. Break off.

SECOND PETAL . . . Skip 3 sc on 8th rnd of Center, attach thread to front loop of next sc and work as for First Petal.

Complete remaining Petals in same manner.

SMALL PETAL—First Petal . . . 1st row: Attach White to front loop of center free sc between Large Petals on

6th rnd of Center, 3 sc in same sc. Ch 1, turn. **2nd and 3rd rows:** Repeat 2nd and 3rd rows of Large Petal. **4th row:** Sc in each sc across. Ch 1, turn. **5th to 8th rows incl:** Repeat 8th row of Large Petal. **9th and 10th rows:** Repeat 16th and 17th rows of Large Petal.

SECOND PETAL . . . Skip 3 sc on same rnd, attach thread to next sc, complete as for First Small Petal, complete remaining petals the same way.

Continue to work Center in rnds as follows: **9th rnd:** Attach Hunter's Green to any sc on 8th rnd and sc in back loop of each sc around. Join. **10th rnd:** Ch 5, * tr in next sc, ch 1. Repeat from * around. Join with sl st to 4th ch of ch-5. **11th rnd:** Ch 6, * tr in next tr, ch 2. Repeat from * around. Join. **12th and 13th rnds:** Work as for 11th rnd, having 1 more ch between tr's on each rnd and having ch-7 at beginning of 12th rnd and ch-8 at beginning of 13th rnd. **14th rnd:** Repeat 13th rnd. **15th rnd:** Ch 4, 3 tr in same place as sl st, * ch 3, in next tr make dc, ch 4 and dc (shell made); ch 3, 4 tr in next tr. Repeat from * around. Join. **16th rnd:** Ch 4, tr in each of next 3 tr, * ch 3, skip next sp, in next sp make dc, ch 4 and dc (shell made over shell); ch 3, tr in each of next 4 tr. Repeat from * around. Join. **17th and 18th rnds:** Work as for last rnd, making ch-4 between shells and tr-groups. Join. **19th to 24th rnds incl:** Work as for last rnd, having 1 ch more between shells and tr-groups on each rnd. **25th rnd:** Repeat 24th rnd. **26th rnd:** Ch 4, 2 tr in same

place as sl st, 3 tr in each of next 3 tr, * ch 7, skip next sp, shell over shell, ch 7, 3 tr in each of next 4 tr. Repeat from * around. Join. **27th rnd:** Ch 4, tr in next 11 tr, * ch 7, skip next sp, shell over shell, ch 7, tr in next 12 tr. Repeat from * around. Join. **28th rnd:** Ch 4, tr in next 11 tr, * ch 8, skip next sp, shell over shell, ch 8, tr in next 12 tr. Repeat from * around. Join. **29th rnd:** Ch 4, tr in next 9 tr, dec 1 tr—to dec 1 tr, work off 2 tr as 1 tr—* ch 10, skip next sp, shell over shell, ch 10, dec 1 tr, tr in next 8 tr, dec 1 tr. Repeat from * around. Join to first tr. **30th rnd:** Ch 4, dec 1 tr, * tr in next 4 tr, work off 3 tr as 1 tr (2 tr decreased), ch 13, skip next sp, shell over shell, ch 13, dec 2 tr. Repeat from * around. Join to first tr.

POINTS . . . Ch 4, holding back on hook the last loop of each tr, make tr in next 5 tr, thread over and draw through all loops on hook (cluster made). Break off. Attach thread to first tr of next tr group and complete a cluster as before. Make a cluster in each remaining tr-group.

SMALL FLOWER (Make 8) . . . Work as for Large Flower until 5 rnds are completed.

FIRST PETAL . . . 1st row: 3 sc in same place as sl st. Ch 1, turn. Complete as for Small Petal.

SECOND PETAL . . . Skip 1 sc on 5th rnd, attach thread to next sc. Complete as for First Petal. Complete remaining Petals in same manner.

Sew Flowers in place around Doily. Starch lightly and press.

FD-446 *Illustrated on page 8*

CENTER . . . Starting at center with Bright Nile Green, ch 8. Join with sl st to form ring. **1st rnd:** Ch 3, 19 dc in ring. Join. **2nd rnd:** Ch 4, tr in same place as sl st, * skip next dc, 5 tr in next dc, skip next dc, 2 tr in next dc. Repeat from * around. Join. **3rd rnd:** Ch 4, tr in same place as sl st, * ch 2, tr in next 2 tr, 5 tr in next tr, tr in next 2 tr, ch 2, tr in next 2 tr. Repeat from * around. Join. **4th rnd:** Ch 3, dc in next tr, * ch 4, sc in next tr, ch 3, skip next 2 tr, tr in next tr, 5 tr in next tr, tr in next tr, ch 3, skip next 2 tr, sc in next tr, ch 4, dc in next 2 tr. Repeat from * around. Join. **5th rnd:** Ch 3, dc in next dc, * ch 4, sc in next sp, ch 4, tr in next 3 tr, 5 tr in next tr, tr in next 3 tr, ch 4, skip next sp, sc in next sp, ch 4, dc in next 2 dc. Repeat from * around. Join. **6th rnd:** Ch 3, dc in next dc, * ch 4, sc in next sp, ch 5, tr in next tr, ch 2, skip next 2 tr, tr in next 2 tr, 5 tr in next tr, tr in next 2 tr, ch 2, skip next 2 tr, tr in next tr, ch 5, skip next sp, sc in next sp, ch 4, dc in next 2 dc. Repeat from * around. Join. **7th rnd:** Ch 3, dc in next dc, * ch 4, sc in next sp, ch 5, tr in next tr, ch 3, tr in next

4 tr, 5 tr in next tr, tr in next 4 tr, ch 3, tr in next tr, ch 5, skip next sp, sc in next sp, ch 4, dc in next 2 dc. Repeat from * around. Join. **8th rnd:** Ch 3, dc in next dc, * ch 4, sc in next sp, ch 5, tr in next tr, ch 3, tr in next tr, ch 3, skip next 2 tr, tr in next 3 tr, 5 tr in next tr, tr in next 3 tr, ch 3, skip next 2 tr, tr in next tr, ch 3, tr in next tr, ch 5, skip next sp, sc in next sp, ch 4, dc in next 2 dc. Repeat from * around. Join. **9th rnd:** Ch 3, dc in next dc, * ch 4, sc in next sp, ch 5, (tr in next tr, ch 3) twice; tr in next 5 tr, 5 tr in next tr, tr in next 5 tr, (ch 3, tr in next tr) twice; ch 5, skip next sp, sc in next sp, ch 4, dc in next 2 dc. Repeat from * around. Join. **10th rnd:** Ch 3, dc in next dc, * ch 4, sc in next sp, ch 5, (tr in next tr, ch 3) 3 times; skip next 2 tr, tr in next 4 tr, 5 tr in next tr, tr in next 4 tr, ch 3, skip next 2 tr, (tr in next tr, ch 3) twice; ch 5, skip next sp, sc in next sp, ch 4, dc in next 2 dc. Repeat from * around. Join and break off.

FLOWER MOTIF . . . Starting at center with Shaded Lt. Yellows, ch 8. Join with sl st to form ring. **1st rnd:** Ch 3, 19 dc in ring. Join. **2nd rnd:** Sc in same place as sl st, * ch 5, skip next dc, sc in next dc. Repeat from * around. Join and break off. **3rd rnd:** Attach Flamingo to any loop, sc in same loop, * ch 4, holding back on hook the last loop of each tr make 3 tr

in same loop, thread over and draw through all loops on hook (cluster made), ch 5, sl st in tip of cluster (picot made), ch 4, sc in same loop, ch 5, sc in next loop. Repeat from * around. Join with sl st to first sc. Break off. **4th rnd:** Attach Green to any picot, * ch 10, dc in next loop, ch 10, sc in next picot. Repeat from * around. Join. **5th rnd:** Sl st to center of next loop, ch 11, sc in next loop, ch 5, sc in 2nd sp preceding tr-group on Center, ch 5, sc in next loop on Flower Motif, ch 5, skip 2 sps on Center, sc in next sp, ch 5, sc in next loop on Flower Motif, ch 5, sc in next sp on Center, sc in next sp, ch 5, sc in next loop on Flower Motif, * ch 11, sc in next loop. Repeat from * around. Join and break off. Make 4 more Flower Motifs, joining to Center as before.

FILL-IN-MOTIF . . . Starting at center with Shaded Lt. Yellows work as for Flower Motif until first rnd is completed. **2nd rnd:** Sc in same place as sl st, * ch 2, sl st in center tr of any tr-group on Center, ch 2, skip next dc on motif, sc in next dc, * ch 5, skip next dc, sc in next dc. Repeat from * around. Join and break off. Make a Fill-In-Motif over each tr-group.

Now work Edging in rnds as follows: **1st rnd:** Attach Green to 3rd
Continued on page 12

Daisy Web

Directions on opposite page

FD-443

Choose any one of the J. & P. Coats or Clark's O.N.T. "Boilfast" Threads listed	Number of Balls	Milwards Steel Hook Numbers	Approximate Diameter
CLARK'S THREE CORD CROCHET COTTON, Article B.34, Size 20	1 No. 48 Hunter's Green	No. 9	16 inches
CLARK'S THREE CORD CROCHET COTTON, Article B.34, Size 30	1 No. 9 Yellow 1 White		
J. & P. COATS SIX CORD CROCHET COTTON, Article A.104, Size 30	1 No. 48 Hunter's Green 1 No. 43 Dk. Yellow 1 White	No. 10	14 inches



FD-447 *Continued from page 13*

center with Hunter's Green, ch 10. Join with sl st to form ring. **1st rnd:** Sc in ring, ch 8, sl st in picot on any petal on inner edge, * sc in first ch, half dc in next ch, dc in next 3 ch, half dc in next ch, sc in next ch, sc in ring; ch 12, sl st in next loop on same Flower, ch 5, sl st in next loop on next Flower, ch 5, skip next 5 ch of ch-12, sc in next ch, half dc in next ch, dc in next 3 ch, half dc in next ch, sc in next ch, sc in ring, ch 8, sl st in next picot on same Flower as last joining. Repeat from * around. Join and break off.

SECOND FLOWER MOTIF . . .
Make 4 Flowers joining as before.

NEXT FLOWER . . . Work as for 1st rnd of Flower. **2nd rnd:** Sl st in next 4 ch, ch 4, make a 5-tr cluster over next 5 tr, ch 2, sl st in picot on previous Flower (leaving 1 petal free on inner edge as before), ch 2, sl st in tip of cluster, ch 4, sl st in top of next ch, ch 7, sl st in top of ch on next petal, ch 4, 5-tr cluster over next 5 tr, picot, ch 4, sl st in top of next ch, ch 7, sl st in top of next ch, 5-tr cluster over next 5 tr, ch 2, sl st in next picot following joining on any Flower on First Flower Motif, ch 2, sl st in tip of cluster. Complete rnd, no more joinings.

FOLLOWING FLOWER . . . Work as for 1st rnd of Flower. **2nd rnd:** Work as before, joining first 2 petals to preceding Flower and to adjacent picot on First Flower Motif. Complete rnd, joining to First Flower of motif in work as before, leaving 1 petal free on inner edge. Work Fill-In-Motif as before.

Make another Flower Motif in same way, joining to Second Flower Motif as Second Flower Motif was joined to First Flower Motif, leaving 2 picots free on Second Flower Motif to form curve. Attach Nile Green to joining between Second and Third Flowers on outer edge, sc in same place, ch 7, sc in next loop, ch 7, in next picot make sc, ch 5 and sc; ch 7, sc in next loop, ch 7, sc in next joining, (ch 7, sc in next loop, ch 7, in next picot make sc, ch 5 and sc) twice; ch 7, sc in next loop, ch 7, sc in next joining. Work in pattern around remaining Flowers. Join and break off.

Make 3 more Motifs for other end of Runner in same way.

Make 20 single Flowers for sides of Runner. Attach Nile Green to any picot on single Flower, sc in same place, ch 2, sl st in 5th free ch-5 loop on First Flower Motif, ch 2, sc in same picot on single Flower, ch 7, sc in next loop, ch 7, in next picot make sc, ch 5 and sc. Complete rnd. Join and break off. Complete other Flowers in same manner, joining to preceding Flower as before, leaving 2 ch-5 loops free on inner edge until 10 single Flowers

have been joined. Join last single Flower to other end Motif as First Flower was joined. Complete other side to correspond.

EDGING . . . Attach Hunter's Green to first ch-7 loop on first single motif following Flower Motif, 7 sc in same loop, 7 sc in next loop, * sc in next ch-5 loop, (in same loop make ch 4, 2 tr, ch 4 and sc) twice; 7 sc in each of the next ch-7 loops, sc in next ch-5 loop, ch 4, tr in same loop, tr in next ch-5 loop, ch 4, sc in same loop, 7 sc in next 2 loops. Repeat from * 10 times; ch 4, tr in same loop as last 7 sc was made, tr in next loop, ch 4, 7 sc in same loop, 7 sc in next loop, sc in next ch-5 loop, (in same loop make ch 4, 2 tr, ch 4 and sc) twice; 7 sc in each of the next 2 loops, sc in next ch-5 loop, (in same loop make ch 4, 2 tr, ch 4 and sc) twice; 7 sc in each of the next 2 loops, ch 4, tr in same loop as last 7 sc was made, tr in next loop, ch 4, 7 sc in next 2 loops. Continue to work in pattern around edge. Join and break off.

Pin Motifs in place on organdy, trace around inner edges. Cut organdy, leaving $\frac{1}{4}$ inch for hem. Roll edges and sew in place. Attach Nile Green and sc closely around. Join and break off. Sew Motifs neatly in place. Starch lightly and press.

FD-436 *Illustrated on page 9***PLACE MAT—Motif (Make 24)**

. . . Starting at center with Yellow, ch 5. **1st rnd:** 15 tr in 5th ch from hook. Join to top of starting chain. **2nd rnd:** Sc in same place as sl st, * 3 dc in next tr, sc in next tr. Repeat from * around. Join and break off. **3rd rnd:** Attach Shaded Blue to any sc, ch 3, * 2 tr in next dc, 3 tr in next dc, 2 tr in next dc, dc in next sc. Repeat from * around. Join and break off. **4th rnd:** Attach Blue to 3rd tr of any scallop, ch 4, tr in same place, * 5 d tr in next tr, 2 tr in next tr, holding back on hook the last loop of each dc, make dc in each of the next 5 sts, thread over and draw through all loops on hook (cluster made), 2 tr in next tr. Repeat from * around. Join and break off.

Sew Motifs together, joining 1 scallop and leaving 2 scallops free for inner edge. Cut an oval piece of linen 15 x 18 inches. Pin Motifs in place. Cut away excess linen, leaving $\frac{1}{2}$ inch for hem and having 4 scallops free around outer edge. Sew hem and Motifs in place.

NAPKIN . . . Make 1 Motif as for Place Mat. Cut a piece of linen 10 $\frac{1}{2}$ inches in diameter. Make a narrow hem all around. Sew Motif to edge leaving 3 scallops free. Attach Blue to last free st on Motif, sc closely around napkin. Join to first free st on other side of Motif. Break off. Starch lightly and press.

FD-446 *Continued from page 10*

free loop following joining on Fill-In-Motif, sc in same place, * (ch 7, sc in next loop) 5 times; ch 3, tr in next loop, tr in next free sp on Center, sc in first free loop on Flower Motif, ch 5, sl st in last ch-7 loop made on Fill-In-Motif, ch 5, sc in next loop on Flower Motif, (ch 11, sc in next loop) 14 times; tr in next free sp on Center, tr in first free loop on next Fill-In-Motif, ch 3, sc in next loop, ch 3, sl st in last ch-11 loop on previous Flower Motif, ch 3, sc in next loop on Fill-In-Motif. Repeat from * around. Join. **2nd rnd:** Sl st to center of next loop on Fill-In-Motif, ch 4, 3-tr cluster in same loop, * (ch 6, 4-tr cluster in next loop) 3 times; 4-tr cluster in next free loop on Flower Motif, (ch 6, 4-tr cluster in next loop) 12 times; 4-tr cluster in next free loop on Fill-In-Motif. Repeat from * around. Join to tip of first cluster. **3rd rnd:** Sl st in next sp, ch 3, 5 dc in same sp, 6 dc in each of the next 3 sps, * 8 dc in each of the next 10 sps, 6 dc in each of the next 5 sps. Repeat from * around. Join. **4th rnd:** Sc in same place as sl st, * ch 5, skip next dc, sc in next dc. Repeat from * around. Join. **5th rnd:** Sl st to center of next loop, sc in same place, * ch 5, sc in next loop. Repeat from * around. Join. **6th and 7th rnds:** Work as before making ch-6 loops on 6th rnd and ch-7 loops on 7th rnd. Break off at end of 7th rnd. **8th rnd:** Attach Yellow to any loop, work as before making ch-8 loops around. Join and break off. **9th rnd:** Attach Flamingo to any loop, work as before making ch-9 loops around. Join and break off.

Starch lightly and press, ruffling Edging over Fill-In-Motif.

FD-437 *Continued from page 7*

last ch. Now work in rnds as follows: **1st rnd:** Work as for first rnd of Center Petal. **2nd rnd:** Work as for 2nd rnd of Center Petal to within last 12 sc at end of rnd, half dc in next sc, sc in next sc, sl st in next sc (inner edge of petal). Break off. Sew 2 Side Petals to Large Petal to form Tulip.

Make 3 more Shaded Yellow Tulips and 4 each of Shaded Pinks, Shaded Lavenders and Flamingo. Sew Tulips to points of Center, alternating colors.

EDGING . . . Attach Chartreuse to tip of first Side Petal on any Tulip. **1st rnd:** Sc in same place, * (ch 10, sc in tip of next Petal) twice; (ch 10, skip next 6 dc on same petal, sc in next dc) 3 times; ch 10, sc in corresponding dc on next Tulip, ch 5, sl st in last loop made on previous Tulip, ch 5, (skip 6 dc on Tulip in work, sc in next dc, ch 10) twice; sc in tip of same petal. Repeat from * around, ending with ch 5, d tr in first sc made. **2nd rnd:** (Ch 10, sc in next loop) 3 times; * ch 10, dc in next 2 free loops, (ch 10, sc in next loop) 4 times. Repeat from * around. Join and break off. Starch lightly and press.

Viola Cornuta

FD-447

Choose any one of the J. & P. Coats or Clark's O.N.T. "Boilfast" Threads listed	Number of Balls	Milwards Steel Hook Numbers	Approximate Size
CLARK'S THREE CORD CROCHET COTTON, Article B.34, Size 20	2 No. 169 Yellow and Lavender	No. 9	14½ x 40 inches
CLARK'S THREE CORD CROCHET COTTON, Article B.34, Size 30	1 No. 26-B Bright Nile Green 1 No. 48 Hunter's Green	No. 10	13 x 36 inches
J. & P. COATS SIX CORD CROCHET COTTON, Article A.104, Size 30	2 No. 18 Shaded Lavenders 1 No. 26-B Bright Nile Green 1 No. 48 Hunter's Green		

Other Materials Required: ½ yard lavender organdy, 36 inches wide.

FIRST FLOWER MOTIF — First Flower . . . Starting at center with Yellow and Lavender, ch 10. Join with sl st to form ring. **1st rnd:** (Ch 4, 5 tr in ring, ch 4, sl st in ring) 5 times. **2nd rnd:** Sl st in next 4 ch, * ch 4, holding back on hook the last loop of each tr, make tr in next 5 tr, thread over and draw through all loops on hook (cluster made), ch 5, sl st in tip of cluster (picot made), ch 4, sl st in

top of chain on previous rnd on same petal, ch 7, sl st in top of chain on next petal. Repeat from * around. Join and break off.

SECOND FLOWER . . . Work as for First Flower until 1st rnd is completed. **2nd rnd:** Sl st in next 4 ch, ch 4, make a 5-tr cluster over next 5 tr, ch 2, sl st in any picot on First Flower, ch 2, sl st in tip of cluster on

Second Flower, ch 4, sl st in top of chain on previous rnd on same petal. Complete rnd as for First Flower, no more joinings. Make 4 more Flowers in same way, joining as before, leaving 2 petals free on outer edge of Motif and 1 petal free on inner edge. Join last Flower to First Flower.

FILL-IN-MOTIF . . . Starting at *Continued on page 12*



Sweet William

Illustrated on Back Cover

FD-439

Choose any one of the
J. & P. Coats or Clark's O.N.T. "Boilfast" Threads listed

CLARK'S THREE CORD CROCHET COTTON,
Article B.34, Size 20

CLARK'S THREE CORD CROCHET COTTON,
Article B.34, Size 30

J. & P. COATS SIX CORD CROCHET COTTON,
Article A.104, Size 30

Number of Balls

Milwards Steel
Hook Numbers

Approximate
Diameter

1 each of No. 15
Shaded Pinks, No. 18
Shaded Lavenders,
No. 8 Blue, No. 9
Yellow, No. 46-A Mid
Rose, No. 48 Hunter's
Green, and White

No. 9

No. 10

Motif 1½ inches
Doily 16½ inches

Motif 1¼ inches
Doily 13 inches

FIRST FLOWER . . . 1st rnd: Starting at center with Yellow, ch 6, dc in 6th ch from hook, (ch 2, dc in same ch) 4 times; ch 2, skip 2 ch of ch-6, sl st in next ch. **2nd rnd:** Sc in same place as sl st, * 3 sc in next sp, sc in next dc. Repeat from * around. Join and break off. **3rd rnd:** Attach Blue to same place as sl st, ch 3, dc in same place, * ch 7, skip next 3 sc, 2 dc in next sc. Repeat from * around. Join. **4th rnd:** Sc in same place as sl st, sc in next dc, * 9 sc in next loop, sc in next 2 dc. Repeat from * around. Join and break off. (Make first 2 rnds on all Flowers Yellow.)

SECOND FLOWER . . . Work as for First Flower until 3rd rnd is completed, using White on 3rd rnd in place of Blue. **4th rnd:** Sc in same place as sl st, sc in next dc, 5 sc in next loop, sl st in center sc of any

loop on First Flower, 4 sc in same loop on Second Flower, sc in next 2 dc, 5 sc in next loop, sl st in center sc of next loop on First Flower, 4 sc in same loop on Second Flower. Complete rnd as for First Flower.

THIRD FLOWER . . . Work as before using Rose for 3rd rnd. **4th rnd:** Sc in same place as sl st, sc in next dc, 5 sc in next loop, sl st in center sc of loop following last joining on Second Flower, 4 sc in same loop on Third Flower, 5 sc in next loop, sl st in joining of First and Second Flowers, 4 sc in same loop on Third Flower. Complete rnd, joining next loop as before.

Make 34 more Flowers in assorted colors (excluding Hunter's Green), joining as before, having 4 Flowers on first row and 1 more Flower on each row until there are 7 Flowers on

row; then 1 Flower less on each row until there are 4.

RUFFLE . . . 1st rnd: Attach Hunter's Green to any sc on edge of doily, ch 4, tr in back loop of each sc around. Join. **2nd rnd:** Ch 7, * skip next 2 tr, tr in next tr, ch 3. Repeat from * around. Join to 4th ch of ch-7. **3rd rnd:** Sl st in next 2 ch, ch 8, * tr in next sp, ch 4. Repeat from * around. Join. **4th, 5th and 6th rnds:** Work as for 3rd rnd, having 1 more ch between tr's and ch-9 at beginning of 4th rnd, ch-10 on 5th rnd and ch-11 on 6th rnd. **7th rnd:** Ch 7, tr in same place as sl st, * ch 8, in next tr make tr, ch 3 and tr. Repeat from * around. Join to 4th ch of ch-7. **8th rnd:** * In next sp make 2 sc, ch 4 and 2 sc; in next sp make 5 sc, ch 4 and 5 sc. Repeat from * around. Join and break off. Starch lightly and press.

Petunias

Illustrated on Back Cover

FD-442

Choose any one of the
J. & P. Coats or Clark's O.N.T. "Boilfast" Threads listed

CLARK'S THREE CORD CROCHET COTTON,
Article B.34, Size 20

CLARK'S THREE CORD CROCHET COTTON,
Article B.34, Size 30

J. & P. COATS SIX CORD CROCHET COTTON,
Article A.104, Size 30

Number of Balls

Milwards Steel
Hook Numbers

Approximate
Diameter

1 each of No. 8 Blue,
No. 13 Shaded Blues,
No. 15 Shaded Pinks,
No. 18 Shaded Lavenders,
No. 37 Dk. Lavender,
No. 46-A Mid Rose, and White

No. 9

No. 10

10 inches

9 inches

CENTER . . . Starting at center with Blue, ch 10. Join with sl st to form ring. **1st rnd:** 18 sc in ring. Join. **2nd rnd:** Sc in same place as sl st, * ch 5, skip next sc, sc in next sc. Repeat from * around. Join. **3rd and 4th rnds:** Sl st to center of next loop, sc in same loop, * ch 5, sc in next loop. Repeat from * around. Join. **5th rnd:** Sc in same place as sl st, * 2 sc in next

loop, ch 5, sc in next sc. Repeat from * around. Join. **6th rnd:** Sl st in next sc, sc in same sc, sc in next sc, * 2 sc in next loop, ch 5, skip next sc, sc in next 2 sc. Repeat from * around. Join. **7th to 14th rnds incl:** Sl st in next sc, sc in same sc, * sc in each sc across, 2 sc in next loop, ch 5, skip next sc. Repeat from * around. Join. **15th rnd:** Sl st in next sc, sc in same sc, * sc in each sc across to within last sc, ch 5, sc in next loop, ch 5, skip next sc. Repeat from * around. Join. **16th rnd:** Sl st in next sc, sc in same sc, * sc in each

sc across to within last sc, (ch 5, sc in next loop) twice; ch 5, skip next sc. Repeat from * around. Join. **17th to 20th rnds incl:** Work as for last rnd, having 1 loop more between sc-groups and 1 sc less in each sc-group (7 loops and 5 sc on 20th rnd). **21st rnd:** Sl st in next 2 sc, sc in same sc, * (ch 5, sc in next loop) 7 times; ch 5, skip 2 sc, sc in next sc. Repeat from * around, ending with ch 2, dc in first sc made. **22nd and 23rd rnds:** * Ch 5, sc in next loop. Repeat from *

Continued on page 15

FD-442 *Continued from page 14*

around, ending with ch 2, dc in first sc made (72 loops). **24th rnd:** Sc in loop formed by dc, * ch 3, 3 dc in last sc made, ch 3, sl st in same sc, ch 12, 'sc in 2nd ch from hook, ch 3, 3 dc in last sc made, ch 3, sl st in same sc, ch 10, skip next 5 loops, sc in next loop. Repeat from * around. Join and break off.

FLOWER . . . Starting at base with White, ch 5. Join with sl st to form ring. **1st rnd:** Ch 4, 4 tr in ring. Join to top of ch-4. **2nd rnd:** Ch 4, tr in same place as sl st, 2 tr in each tr around. Join. **3rd rnd:** Ch 4, tr in each tr around. Join. **4th rnd:** Ch 4,

* 2 tr in next tr, tr in next tr. Repeat from * around. Join. Ch 4, turn. **5th rnd:** 2 tr in same place as sl st, 3 tr in each tr around. Join. **6th rnd:** Ch 5, tr in same place as sl st, ch 1, * in next tr make (tr, ch 1) twice. Repeat from * around. Join to 4th ch of ch-5. Break off.

Make 6 more White flowers, 1 Dk. Lavender, 1 Shaded Lavender, 1 Blue, 1 Shaded Blue and 1 Shaded Pink in same way.

Sew a Flower to base of each free dc-group on last rnd of Center.

INNER EDGE . . . Attach Shaded Lavenders to any sp on any Flower, sc in same sp, * (ch 2, sc in next sp)

45 times; ch 2, sc in any sp on next Flower. Repeat from * around. Join and break off.

OUTER EDGE . . . Attach Shaded Purples (or Mid Rose) to same sp as last sc on Inner Edge of any Flower, * (ch 2, sc in next sp) 44 times; ch 2, sc in same sp as first sc on Inner Edge of same Flower, ch 2, sc in same sp as last sc on Inner Edge of next flower. Repeat from * around. Join and break off.

STAMEN (Make 12) . . . With Shaded Purples (or Mid Rose) ch 30. Break off. Fold into 2 loops. Sew to center of Flower.

Starch lightly and press.

Coreopsis

Illustrated on Back Cover

FD-445

Choose any one of the J. & P. Coats or Clark's O.N.T. "Boilfast" Threads listed	Number of Balls	Milwards Steel Hook Numbers	Approximate Diameter
CLARK'S THREE CORD CROCHET COTTON, Article B.34, Size 20	1 No. 48 Hunter's Green 1 No. 181 Shaded Lt. Yellows	No. 9	16 inches
CLARK'S THREE CORD CROCHET COTTON, Article B.34, Size 30	1 No. 48 Hunter's Green 1 No. 19 Shaded Yellows	No. 10	15 inches

CENTER . . . Starting at center with Hunter's Green, ch 5. Join with sl st to form ring. **1st rnd:** Ch 3, 15 dc in ring. Join. **2nd rnd:** Ch 5, * dc in next dc, ch 2. Repeat from * around. Join with sl st to 3rd ch of ch-5. **3rd rnd:** Sl st in next sp, ch 3, 2 dc in same sp, * ch 2, dc in next sp, ch 2, 3 dc in next sp. Repeat from * around. Join. **4th rnd:** Ch 3, dc in same place as sl st, * dc in next dc, 2 dc in next dc, ch 2, holding back on hook the last loop of each dc, make 3 dc in next dc, thread over and draw through all loops on hook (cluster made), ch 2, 2 dc in next dc. Repeat from * around. Join. **5th and 6th rnds:** Ch 3, dc in same place as sl st, * dc in each dc across dc-group, 2 dc in last dc, ch 2, cluster in tip of next cluster, ch 2, 2 dc in next dc. Repeat from * around. Join. **7th rnd:** Ch 3, dc in next 3 dc, * ch 3, skip next dc, dc in next 4 dc, ch 2, cluster in tip of next cluster, ch 2, dc in next 4 dc. Repeat from * around. Join. **8th rnd:** Ch 3, dc in next 3 dc, * ch 5, dc in next 4 dc, ch 2, cluster in tip of next cluster, ch 2, dc in next 4 dc. Repeat from * around. Join. **9th and 10th rnds:** Work as for 8th rnd, having 2 ch's more between dc-groups on each rnd and keeping ch-2 between dc-groups and clusters. **11th rnd:** Ch 3, dc in next 3 dc, * ch 9, dc in next 4 dc, ch 4, cluster in tip of next cluster, ch 4, dc in next 4 dc. Repeat from * around. Join. **12th to 20th rnds incl:** Work as for 11th rnd having 1 more ch between clusters and dc-groups and keeping ch-9 between dc-groups.

Now work points individually as follows: **1st row:** Ch 3, dc in next

3 dc, ch 9, dc in next 4 dc. Ch 3, turn. **2nd to 9th rows incl:** Skip first dc, dc in next 3 dc, ch 9, dc in next 3 dc and in top of turning chain. Ch 3, turn. **10th to 13th rows incl:** Work as for last row having 2 ch less between dc-groups on each row. **14th row:** Skip first dc, dc in next 3 dc, dc in ch, dc in next 3 dc and in top of turning chain. Ch 3, turn. **15th and 16th rows:** Skip first dc, dec 1 dc—to dec 1 dc, work off 2 dc as 1 dc—dc in each dc across to within last 2 dc, dec 1 dc. Ch 3, turn. **17th row:** Skip first dc, make a 4-dc cluster over next 4 dc. Break off. Attach Green to first dc of next dc-group and work as for first point. Complete other points in same way.

FLOWER (Make 8) . . . Starting at center with Shaded Lt. Yellows, ch 8. Join with sl st to form ring. **1st rnd:** 12 sc in ring. Join.

FIRST PETAL . . . 1st row: Ch 1, 2 sc in each of the next 2 sc. Ch 3, turn. **2nd row:** Skip first sc, dc in next 3 sc. Ch 3, turn. **3rd row:** 2 dc in first dc, 3 dc in next 2 dc, 3 dc in turning chain. Ch 3, turn. **4th and 5th rows:** Skip first dc, dc in each dc across and in top of turning chain. Ch 3, turn. Ch 4, turn at end of 5th row. **6th row:** Skip first dc, make a 4-tr cluster over next 4 dc, ch 4, sc in next 2 dc, ch 4, 4-tr cluster over next 4 dc, ch 4, sl st in top of turning chain. Break off. (Right side of cluster row is right side of flower.)

With wrong side facing attach thread to next sc on first rnd and work Second Petal as for First Petal. Make 4 more Petals in same way.

CENTER . . . With Hunter's Green, ch 6, 2 tr in 6th ch from hook, ch 4, sc in same ch, (ch 4, 2 tr in same ch, ch 4, sc in same ch) 3 times. Break off. Make a Yellow French knot through Center to Flower.

Attach Green to first cluster on any petal, sc in same place, ch 11, sc in next cluster on same Petal, ch 11, sc in first cluster on next Petal, ch 5, sl st in end st of first dc-group on 8th row of any point, ch 5, sc in next cluster on same Petal, ch 5, d tr at base of first dc on first row of same point, ch 5, sc in first cluster on next Petal, ch 5, sl st in tip of next cluster on Center, ch 5, sc in next cluster on same Petal. Complete rnd, joining Flower to next corner and to 8th row on next point as before. Join and break off. Join remaining Flowers to Center in same way.

EDGING . . . 1st rnd: Attach Green to tip of cluster on any point, * ch 12, skip next 3 rows, sc in end st of next row, ch 6, skip next 3 rows, d tr in end st of next row, ch 6, sc in first free loop on next Flower, ** ch 6, in next loop make (3-tr cluster, ch 6) 3 times; sc in next loop. Repeat from ** 3 times; ch 6, d tr in end st of 8th row from tip of next point, ch 6, skip next 3 rows, sc in end st of next row, ch 12, sc in tip of cluster at point. Repeat from * around. Join. **2nd rnd:** 15 sc in next loop, * 7 sc in each of the next 16 sps, 15 sc in each of the next 2 loops. Repeat from * around. Join and break off.

Starch lightly and press.

NEWEST IN

Floral Doilies



FD-442

FD-445

FD-439

10¢