

Creative Commons 4.0 NC SA BY FREE USE AND DISTRIBUTION ONLY - NOT FOR SALE

# LACES & CORNERS

by *CP Penelope*



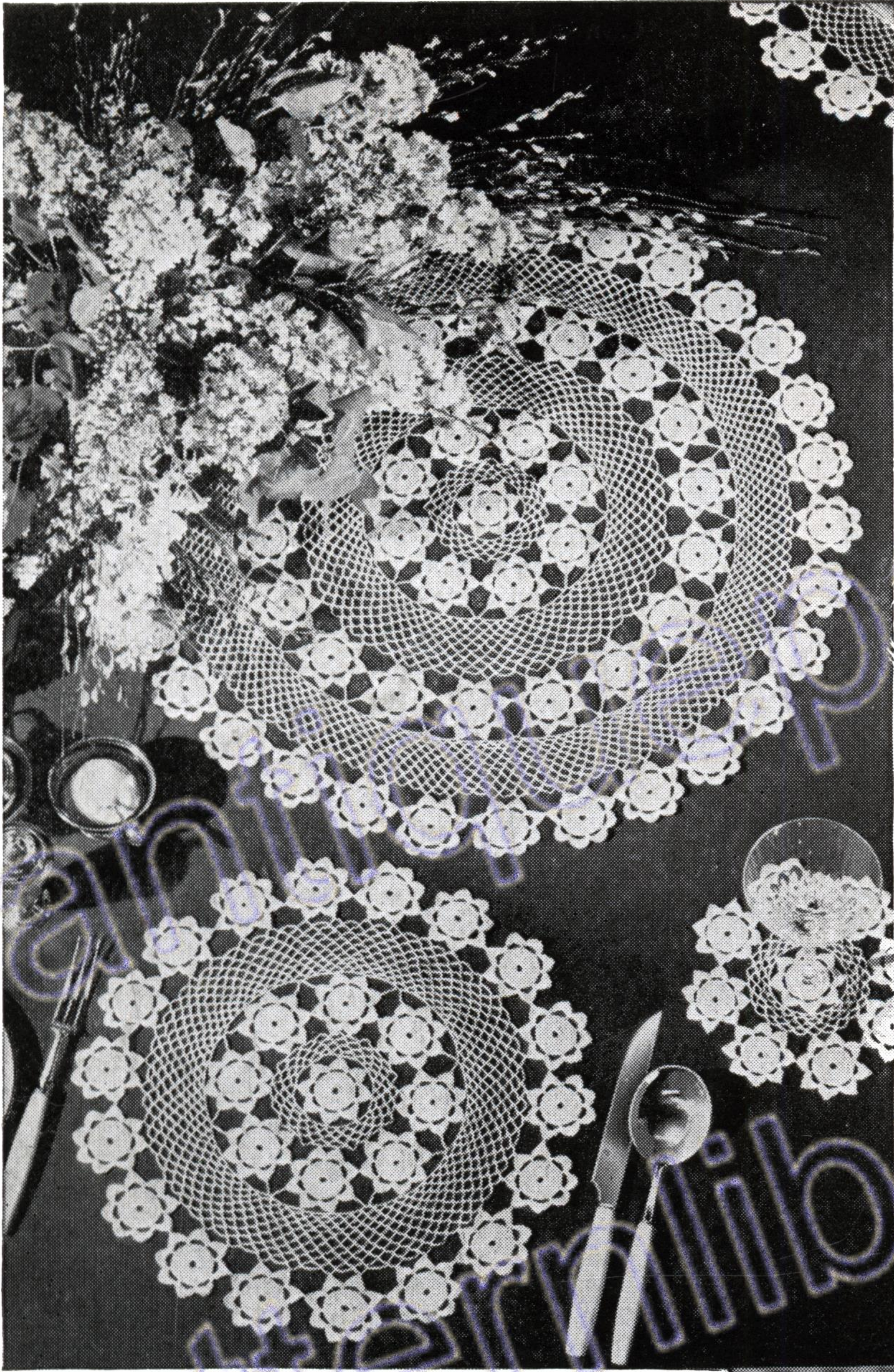
[www.antiquepatternlibrary.org](http://www.antiquepatternlibrary.org) 2017.05

A NEEDLECRAFT PUBLICATION

PRICE

**30** cents  
or 3/-





## Crochet for the table

### AND SOME LOVELY FLORAL DECORATIONS, TOO!

That's what Coats bring you in their latest crochet booklet. The elegant dinner mats and tablecloth shown are just two of Coats charming new crochet designs. And each pattern has a flower arrangement to go with it—with advice and diagrams

by Miss Julia Clements,  
international writer  
and authority on  
flower arrangement.



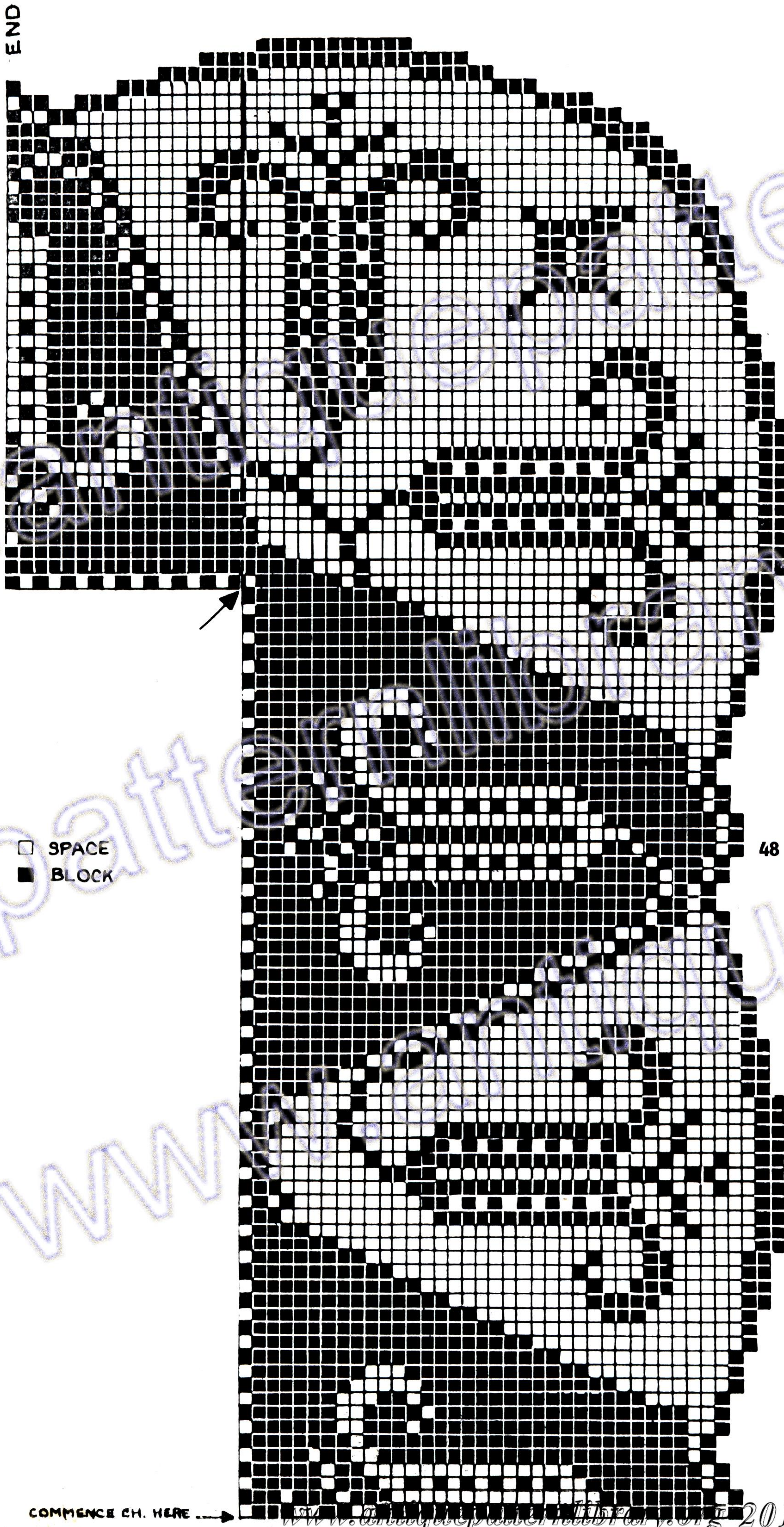
**CROCHET FOR THE TABLE, BOOK No. 814** —  
costs only 1/9d. from your needlework  
stockists, or 1/11d. post free from J. & P.  
Coats Ltd., Dept. BL, Box 8, Paisley,  
Scotland. And for only 1/- post free  
from the same address you can get  
Coats 1961 Catalogue of Publications —  
it includes embroidery, crochet, tatting,  
knitting and sewing, and has over 200  
designs!




J. & P. COATS LTD · PAISLEY · SCOTLAND



# Conventional



□ SPACE  
■ BLOCK

**MATERIALS.**—Coats  Mercer-Crochet No. 40 (20 grm.). 15 balls selected colour. 47 in. square Ol Bleach Coloured Linen to match. Milwards Steel Crochet Hook No. 4.

**TENSION.**—6 sps and 6 rows = 1 in.

**MEASUREMENTS.**—59 in. square.

Commence with 111 ch.

**1st row.**—1 tr into 4th ch from hook, 1 tr into each of the next 2 ch (blk made) 2 ch, miss 2 ch, 1 tr into each of next 19 ch, (6 blks made), (2 ch, miss 2 ch, 1 tr into next ch) 4 times (4 sps made), 1 tr into each of next 42 ch (14 blks made), (2 ch, miss 2 ch, 1 tr into next ch) twice (2 sps made), 1 tr into each of next 6 ch (2 blks made), (2 ch, miss 2 ch, 1 tr into next ch) twice (2 sps made), 1 tr into each of next 9 tr (3 blks made), 2 ch, miss 2 ch, 1 tr into next ch (1 sp made), 3 ch, turn.

**2nd row.**—2 tr into first sp, 1 tr into next tr (blk made over sp), 1 tr into each of next 6 tr (2 blks made over 2 blks), \* 2 ch, miss 2 tr, 1 tr into next tr (sp made over blk), 3 blks; repeat from \* once more, 13 sps, (2 ch, miss 2 ch, 1 tr into next tr) twice (2 sps made over 2 sps), 8 blks, 1 sp, 1 tr into each of next 2 tr, 1 tr into top of turning ch, turn.

**3rd row.**—1 ss into each of first 4 tr (1 blk decreased), 3 ch, follow diagram to end of row, 3 ch, turn.

**4th row.**—Follow diagram to end of row, turn.

**5th row.**—1 ss into each of first 4 tr, 3 ch, follow diagram to end of row, 3 ch, turn.

**6th row.**—As 4th row, turning with 5 ch at end of row.

**7th row.**—1 tr into 4th ch from hook, 1 tr into next ch, 1 tr into top of next tr (an extension blk at beginning of row), follow diagram to end of row, 3 ch, turn.

**8th and 9th rows.**—Follow diagram.

**10th row.**—8 blks, 5 sps, 14 blks, 7 sps, 2 ch, miss next 2 tr, thread over hook, insert hook into top of turning ch and pull thread through, thread over and pull through 1 loop on hook (a foundation ch made), complete as for a tr. (thread over hook, insert hook into

COMMENCE CH. HERE →

48





last foundation ch and pull thread through, thread over and pull through 1 loop on hook, complete as for a tr) 3 times (an extension blk made at end of row), 3 ch, turn.

Now continue to follow diagram from 11th row to top working to inside of heavy line. Fasten off.

\* Join thread at arrow on diagram and working over row-ends follow diagram to end of row, 3 ch, turn.

Now follow diagram to end.

Repeat from 1st to 48th row 4 times more, then from 1st row to top once more.

Repeat from last \* twice more, then from 1st to 48th row 4 times more.

Fasten off.

Overcast top of last row to foundation ch. Mount on to Linen.

Damp and press.

#### TRAY MAT LACE No. 2—(Illustrated on page Twelve)

**MATERIALS.**—Coats  Mercer-Crochet No. 40 (20 grm.). Milwards Steel Crochet Hook No. 5.

**MEASUREMENTS.**—2 $\frac{1}{2}$  in. deep.

**TENSION.**—6 sps to 1 in.

**INSTRUCTIONS.**—Commence with 56 ch.

**1st row.**—1 tr into 8th ch from hook, 12 tr, 3 sps, 13 tr, 4 sps, 4 tr, 3 ch, turn.

**2nd row.**—1 tr into 4th ch from hook, 2 tr, 4 sps, 16 tr, 1 sp, 16 tr, 1 sp, 5 ch, turn.

**3rd row.**—1 tr into next tr, 15 tr, 1 sp, 16 tr, 3 sps, 4 tr, 3 ch, turn.

**4th row.**—1 tr into 4th ch from hook, 2 tr, 5 sps, 10 tr, 1 sp, 10 tr, 3 sps, 5 ch, turn.

**5th row.**—1 tr into next tr, 3 tr, 4 sps, 4 tr, 4 sps, 4 tr, 2 sps, 4 tr, 5 ch, turn.

**6th row.**—1 tr into 4th ch from hook, 2 tr, 5 sps, 10 tr, 1 sp, 10 tr, 3 sps, 5 ch, turn.

**7th row.**—1 tr into next tr, 15 tr, 1 sp, 16 tr, 3 sps, 4 tr, 5 ch, turn.

**8th row.**—1 tr into 4th ch from hook, 2 tr, 4 sps, 16 tr, 1 sp, 16 tr, 1 sp, 5 ch, turn.

**9th row.**—1 tr into next tr, 12 tr, 3 sps, 13 tr, 4 sps, 4 tr, 3 ch, turn.

**10th row.**—1 tr into 4th ch from hook, 2 tr, 1 sp, 4 tr, 1 sp, 4 tr, 5 sps, 4 tr, 5 sps, 4 tr, 5 ch, turn.

**11th row.**—As 1st row.

Repeat from 1st to 10th rows for length required ending with an 8th row, then work corner to within heavy line. Break off thread and rejoin at arrow and continue border from there.





# Insertio

Now follow diagram (A) from 7th row to top then repeat from 1st row to top until there is sufficient to go round open end of pillowcase. Fasten off. Overcast top of last row to foundation ch.

## INSERTION

Commence with 51 ch.

**1st row.**—1 tr into 4th ch from hook 1 tr into each of next 2 ch (blk made, 3 sps, 2 blks, 1 sp, 2 blks, 1 sp, 2 blks, 3 sps, 1 blk, 5 ch, turn.

**2nd row.**—Follow diagram B, 3 ch, turn.

**3rd row.**—Miss first tr, 2 tr into next sp, 1 tr into next tr, follow diagram B to end of row, 5 ch, turn.

Follow diagram (B) from 4th row to top then repeat from 1st row to top until there is sufficient to go round pillowcase. Fasten off. Overcast ends together. Baste insertion round pillowcase  $4\frac{1}{2}$  in. from end. Sew in place. Cut away surplus linen at back leaving about  $\frac{1}{4}$  in. for hem. Turn back a small hem and slip stitch. Sew edging round end. Damp and press.

**MATERIALS.**—Coats  Mercer-Crochet No. 40 (20 grm.). 2 balls selected colour. 1 Pillowcase. Milwards Steel Crochet Hook No. 4.

**TENSION.**—6 sps and 6 rows = 1 in.

**MEASUREMENTS.**—Depth of Edging —  $2\frac{1}{2}$  in. Width of Insertion —  $2\frac{1}{2}$  in.

## EDGING

Commence with 53 ch.

**1st row.**—1 tr into 8th ch from hook (sp made), (2 ch, miss 2 ch, 1 tr into next ch) 3 times (3 sps made), 1 tr into each of next 6 ch (2 blks made), 2 ch, miss 2 ch, 1 tr into next tr (sp made), 1 tr into each of next 6 ch (2 blks made); 2 ch, miss 2 ch, 1 tr into each of next 7 ch, (2 ch, miss 2 ch, 1 tr into next ch) 3 times, 1 tr into each of next 3 ch (1 blk made), 5 ch, turn.

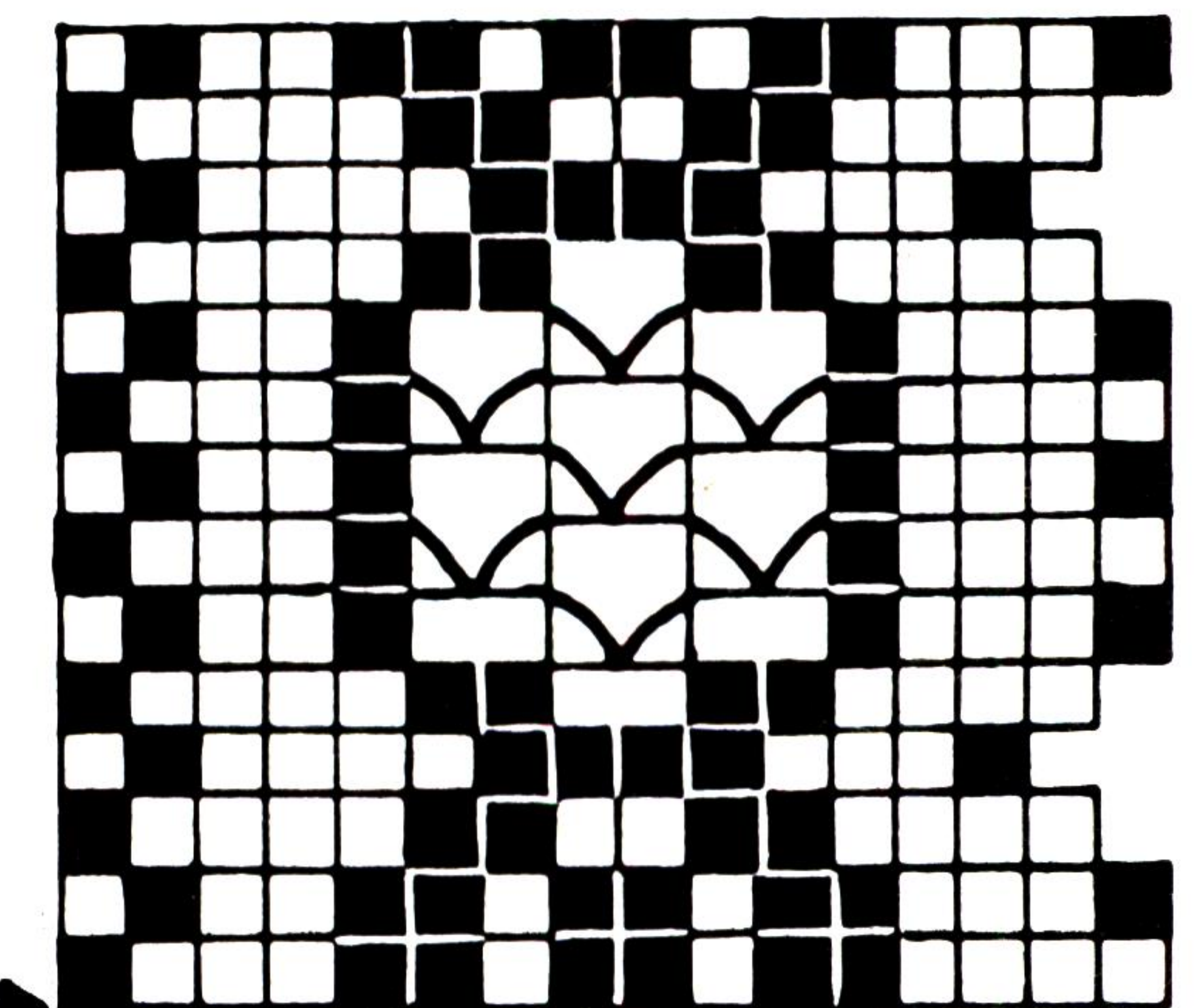
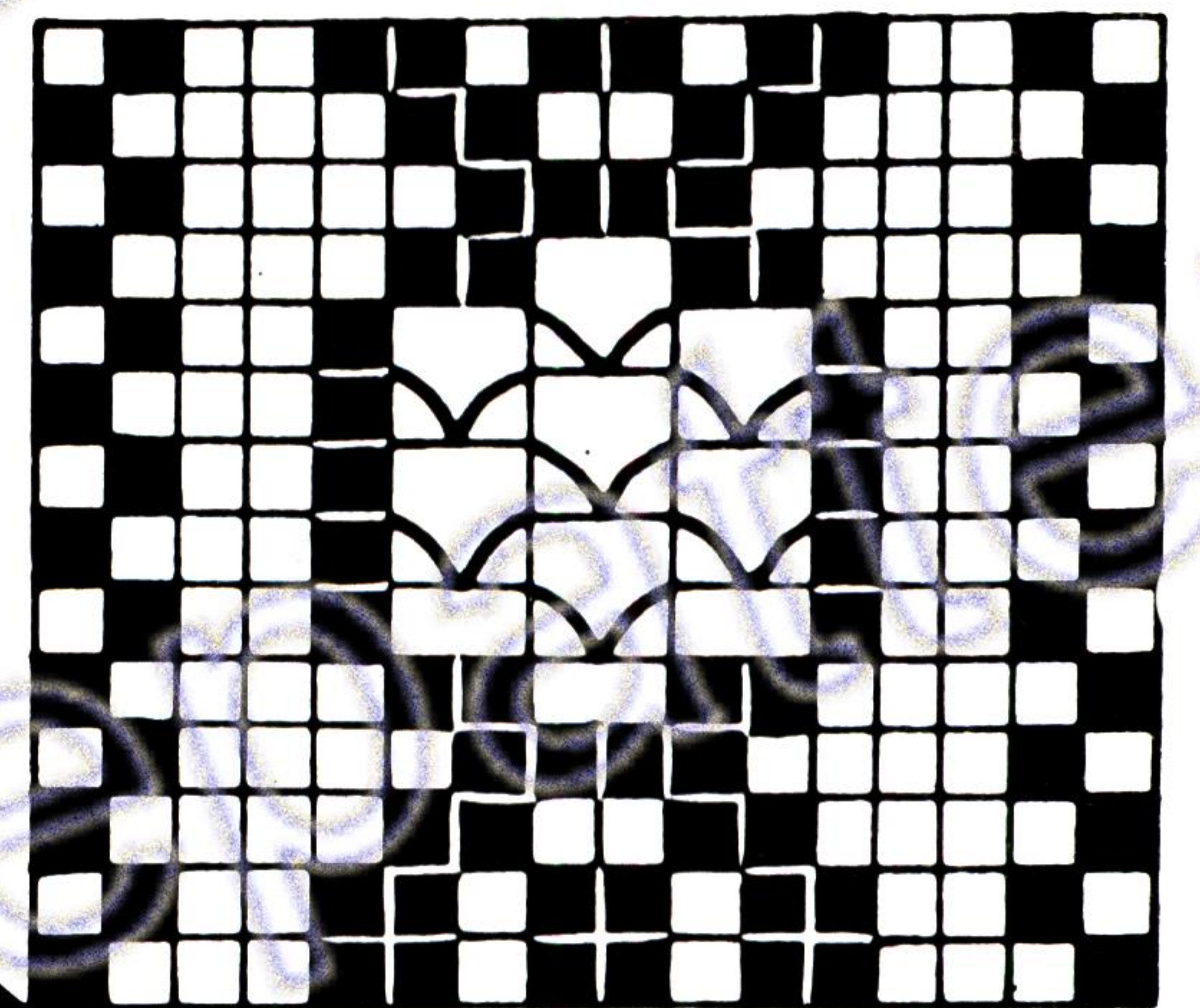
**2nd row.**—Miss first 3 tr, 1 tr into next tr (sp made over blk), 2 tr into next sp, 1 tr into next tr (blk made over sp), (2 ch, 1 tr into next tr) twice (2 sps made over 2 sps), 1 tr into each of next 6 tr (2 blks made over 2 blks), (1 sp, 2 blks) twice, 3 sps, 1 blk, turn.

**3rd row.**—1 ss into each of next 4 sts (one blk decreased) 5 ch, 1 tr into next tr, 2 sps, 2 ch, miss 2 tr, 1 tr into next tr (sp made over blk), 2 blks, 2 sps, 2 blks, 4 sps, 1 blk, 5 ch, turn.

**4th row.**—1 sp, 1 blk, 4 sps, 4 blks, 3 sps, 1 blk, 7 ch, turn.

**5th row.**—1 tr into first tr (one sp increased), 3 sps, 2 blks, 5 ch, miss 5 tr, 1 tr into next tr (bar made over 2 blks), 2 blks, 4 sps, 1 blk, 5 ch, turn.

**6th row.**—1 sp, 1 blk, 2 sps, 1 blk, 1 bar, 3 ch, miss 2 ch, 1 dc into next ch, 3 ch, miss 2 ch, 1 tr into next tr (lacet made over bar), 1 bar, 1 blk, 2 sps, 2 ch, thread over hook, miss 2 ch, insert hook into next ch and pull thread through, thread over and pull through one loop on hook (a foundation ch made), complete as for a tr, \* thread over hook, insert hook into foundation ch and pull thread through, thread over and pull through one loop on hook (another foundation ch made), complete as for a tr; repeat from \* twice more (1 blk increased at end of row), 5 ch, turn.





# and Edgings

## FISH BORDER

**MATERIALS.**— Coats  Mercer-Crochet No. 20. Milwards Steel Crochet Hook No. 4. A 15 in. Huckaback towel.

**MEASUREMENTS.**— $2\frac{1}{2}$  ins. deep.

**TENSION.**—5 sps to 1 in.

**INSTRUCTIONS.**—Commence with 29 ch.

**1st row.**—1 tr into 8th ch from hook, 6 sps, 4 tr, 5 ch, turn.

**2nd row.**—1 tr into 4th ch from hook, 5 tr, 4 sps, 4 tr, 2 sps, 5 ch, turn.

**3rd row.**—1 tr over next tr, 7 sps, 4 tr, 3 ch, turn.

**4th row.**—1 tr over next tr, 2 tr, 2 sps, 7 tr, 4 sps, 5 ch, turn.

**5th row.**—1 tr over next tr, 3 sps, 7 tr, 2 sps, 4 tr, 5 ch, turn.

**6th row.**—1 tr over next tr, 5 tr, 8 sps, 5 ch, turn.

Continue pattern to 30th row then work two more repeats (15 ins.).

Slip stitch to end of towel and press.



## YACHT BORDER

**MATERIALS.**— Coats  Mercer-Crochet No. 20. A Milwards Steel Crochet Hook No. 4. A 15 in. Huckaback towel.

**MEASUREMENTS.**— $2\frac{1}{2}$  ins. deep.

**TENSION.**—5 sps to 1 in.

**INSTRUCTIONS.**—Commence with 36 ch.

**1st row.**—1 tr into 4th ch from hook, 2 tr, 3 sps, 4 tr, 6 sps, 5 ch, turn.

**2nd row.**—1 tr over next tr, 6 sps, 4 tr, 2 sps, 4 tr, 5 ch, turn.

**3rd row.**—1 tr into 4th ch from hook, 5 tr, 3 sps, 4 tr, 6 sps, 5 ch, turn.

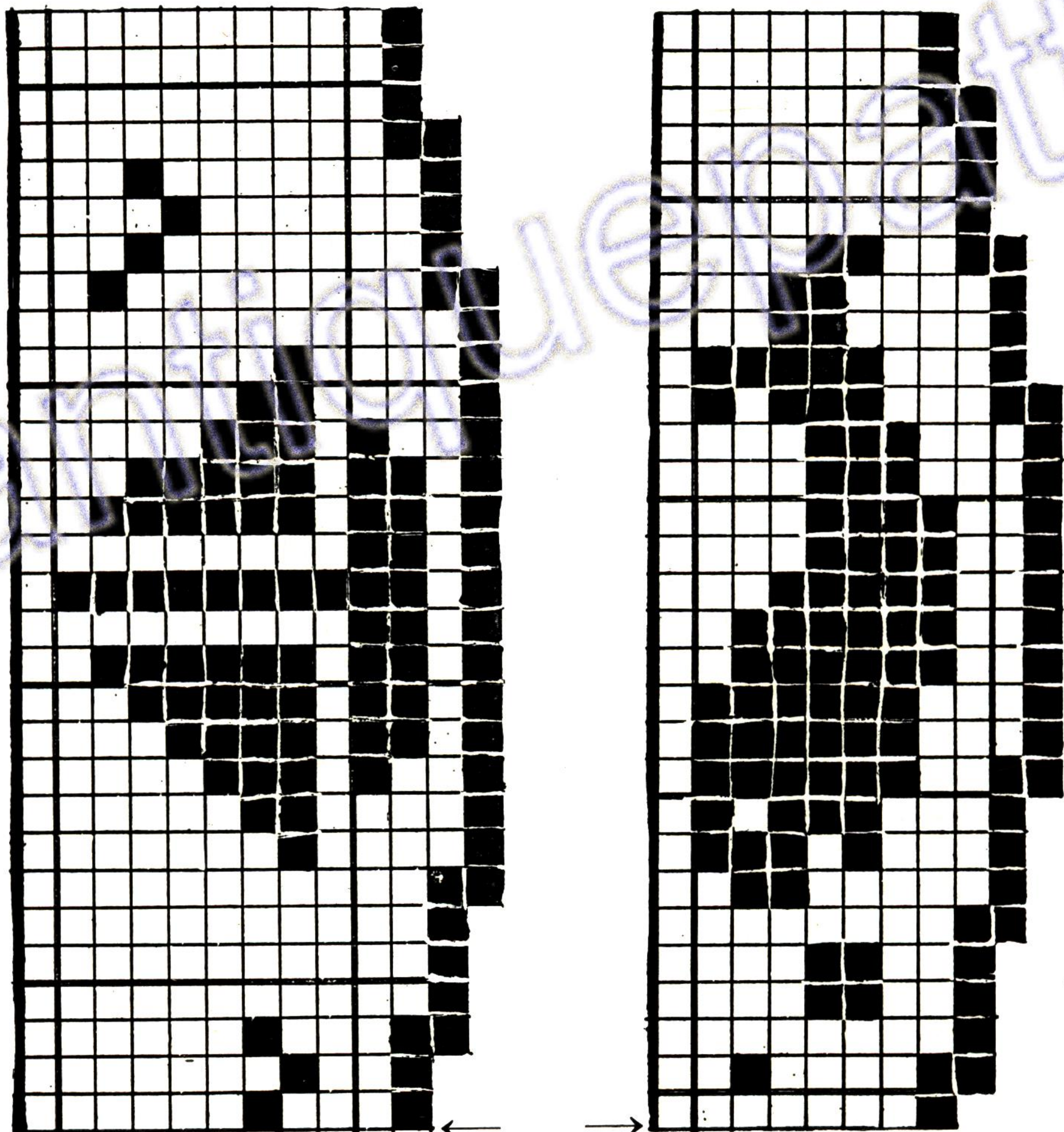
**4th row.**—1 tr over next tr, 10 sps, 4 tr, 3 ch, turn.

**5th row.**—1 tr over next tr, 2 tr, 11 sps, 5 ch, turn.

**6th row.**—1 tr over next tr, 10 sps, 4 tr, 5 ch, turn.

Continue pattern to 30th row then work two more patterns (15 ins.).

Slip stitch to end of towel and press.





# For Tea or Supper Cloths

## ROSEBUDS

**MATERIALS.**— Coats  Mercer-Crochet No. 50.  
A Milwards Steel Crochet Hook No. 6.

**MEASUREMENTS.**—Depth 5 ins.

**TENSION.**—7 sps. to 1 in.

**INSTRUCTIONS.**—Commence with 105 ch.

**1st row.**—1 tr into 4th chain from hook, 5 tr, 4 sps, 10 tr, 23 sps, 4 tr, 1 sp, 5 ch, turn.

**2nd row.**—1 tr over next tr, 3 tr, 16 sps, 4 tr, 4 sps, 16 tr, 4 sps, 7 tr, 5 ch, turn.

**3rd row.**—1 tr in 4th ch from hook, 5 tr, 6 sps, 4 tr, 1 sp, 10 tr, 2 sps, 10 tr, 15 sps, 4 tr, 1 sp, 5 ch, turn.

**4th row.**—1 tr over next tr, 3 tr, 4 sps, 4 tr, 10 sps, 10 tr, 2 sps, 7 tr, 1 sp, 7 tr, 6 sps, 7 tr, 3 ch, turn.

**5th row.**—1 tr over next tr, 5 tr, 7 sps, 13 tr, 1 sp, 16 tr, 3 sps, 4 tr, 4 sps, 4 tr, 5 sps, 4 tr, 1 sp, 5 ch, turn.

**6th row.**—1 tr over next tr, 3 tr, 6 sps, 4 tr, 4 sps, 4 tr, 2 sps, 7 tr, 1 sp, 7 tr, 1 sp, 13 tr, 7 sps, 7 tr, 3 ch, turn.

Continue pattern from 1st to 48th row until corner is reached ending with the 37th row, then work corner to within heavy line.

Break off thread and rejoin at arrow. Work nine rows, as on chart, then continue border.

## SNOWFLAKES

**MATERIALS.**— Coats  Mercer-Crochet No. 50.  
A Milwards Steel Crochet Hook No. 6.

**MEASUREMENTS.**—Depth 6½ ins.

**TENSION.**—7 sps. to 1 in.

**INSTRUCTIONS.**—Commence with 83 ch.

**1st row.**—1 tr into 8th ch from hook, 18 tr, 1 sp, 10 tr, 1 sp, 19 tr, 7 sps, 4 tr, 3 ch, turn.

**2nd row.**—1 tr over next tr, 5 tr, 5 sps, 58 tr, 5 ch, turn.

**3rd row.**—1 tr over 4th tr, 18 tr, 1 sp, 10 tr, 1 sp, 19 tr, 7 sps, 4 tr, 8 ch, turn.

**4th row.**—1 tr into 4th ch from hook, 5 tr, 9 sps, 13 tr, 3 sps, 4 tr, 3 sps, 13 tr, 2 sps, 5 ch, turn.

**5th row.**—1 tr over next tr, 2 sps, 7 tr, 3 sps, 10 tr, 3 sps, 7 tr, 3 sps, 4 tr, 7 sps, 4 tr, 8 ch, turn.

**6th row.**—1 tr into 4th ch from hook, 5 tr, 7 sps, 4 tr, 8 sps, 16 tr, 7 sps, 5 ch, turn.

**7th row.**—1 tr over next tr, 5 sps, 22 tr, 1 sp, 4 tr, 6 sps, 4 tr, 7 sps, 4 tr, 8 ch, turn.

**8th row.**—1 tr into 4th ch from hook, 5 tr, 5 sps, 10 tr, 6 sps, 4 tr, 2 sps, 22 tr, 6 sps, 5 ch, turn.

**9th row.**—1 tr over next tr, 6 sps, 16 tr, 4 sps, 4 tr, 5 sps, 4 tr, 1 sp, 4 tr, 6 sps, 4 tr, 8 ch, turn.

**10th row.**—1 tr into 4th ch from hook, 5 tr, 7 sps, 10 tr, 4 sps, 4 tr, 6 sps, 10 tr, 5 sps, 4 tr, 2 sps, 8 ch, turn.

**11th row.**—1 tr over next tr, 1 sp, 7 tr, 5 sps, 4 tr, 8 sps, 4 tr, 6 sps, 4 tr, 7 sps, 4 tr, 8 ch, turn.

**12th row.**—1 tr into 4th ch from hook, 5 tr, 7 sps, 4 tr, 6 sps, 4 tr, 6 sps, 4 tr, 7 sps, 4 tr, 4 sps, 5 ch, turn.

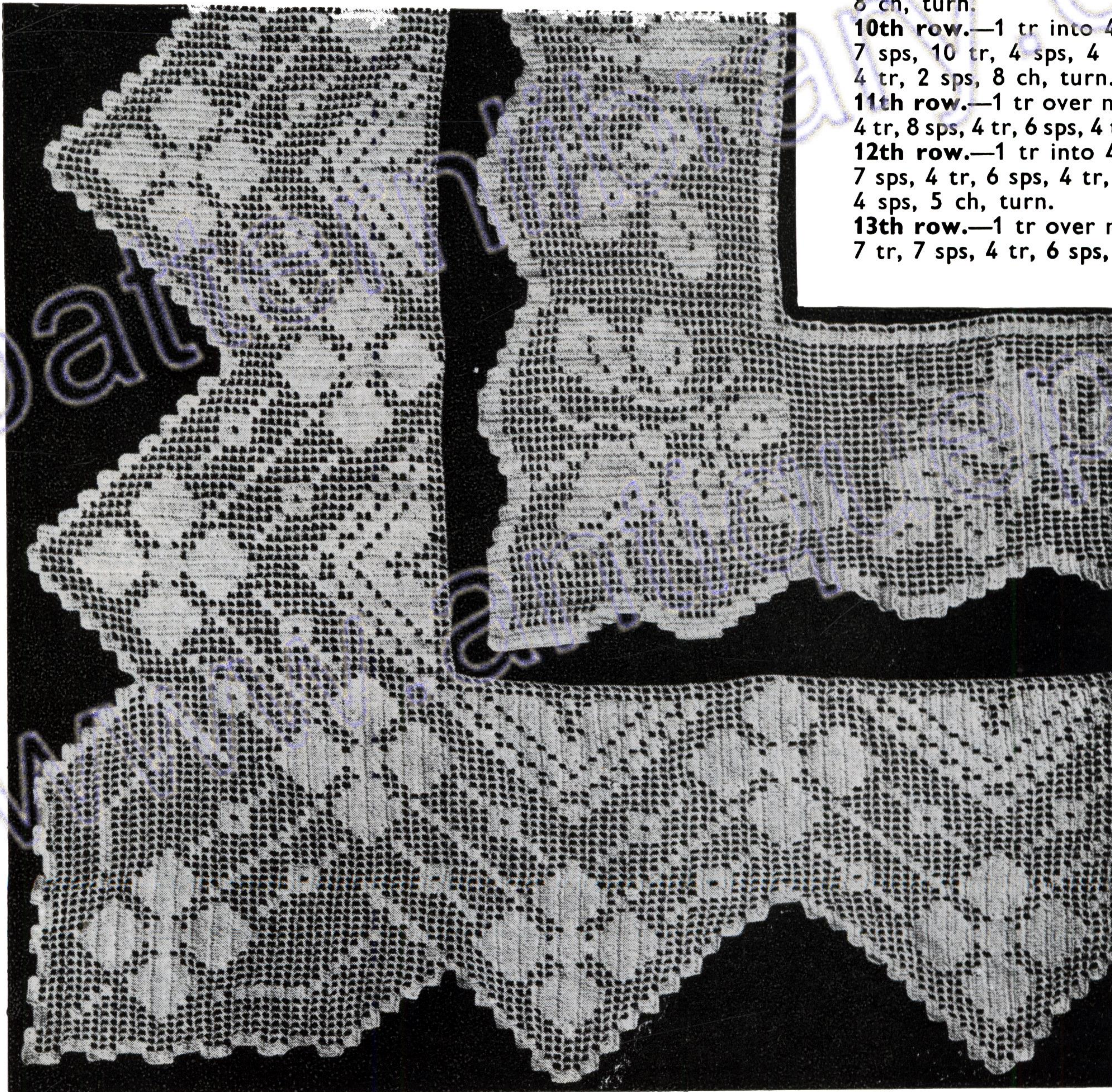
**13th row.**—1 tr over next tr, 1 sp, 4 tr, 1 sp, 7 tr, 7 sps, 4 tr, 6 sps, 4 tr, 6 sps, 4 tr, 7 sps, 4 tr, 8 ch, turn.

**14th row.**—1 tr into 4th ch from hook, 5 tr, 5 sps, 4 tr, 8 sps, 4 tr, 6 sps, 4 tr, 7 sps, 4 tr, 2 sps, 7 tr, 2 sps, 5 ch, turn.

**15th row.**—1 tr over next tr, 2 sps, 7 tr, 1 sp, 7 tr, 7 sps, 10 tr, 4 sps, 4 tr, 6 sps, 10 tr, 5 sps, 4 tr, 8 ch, turn.

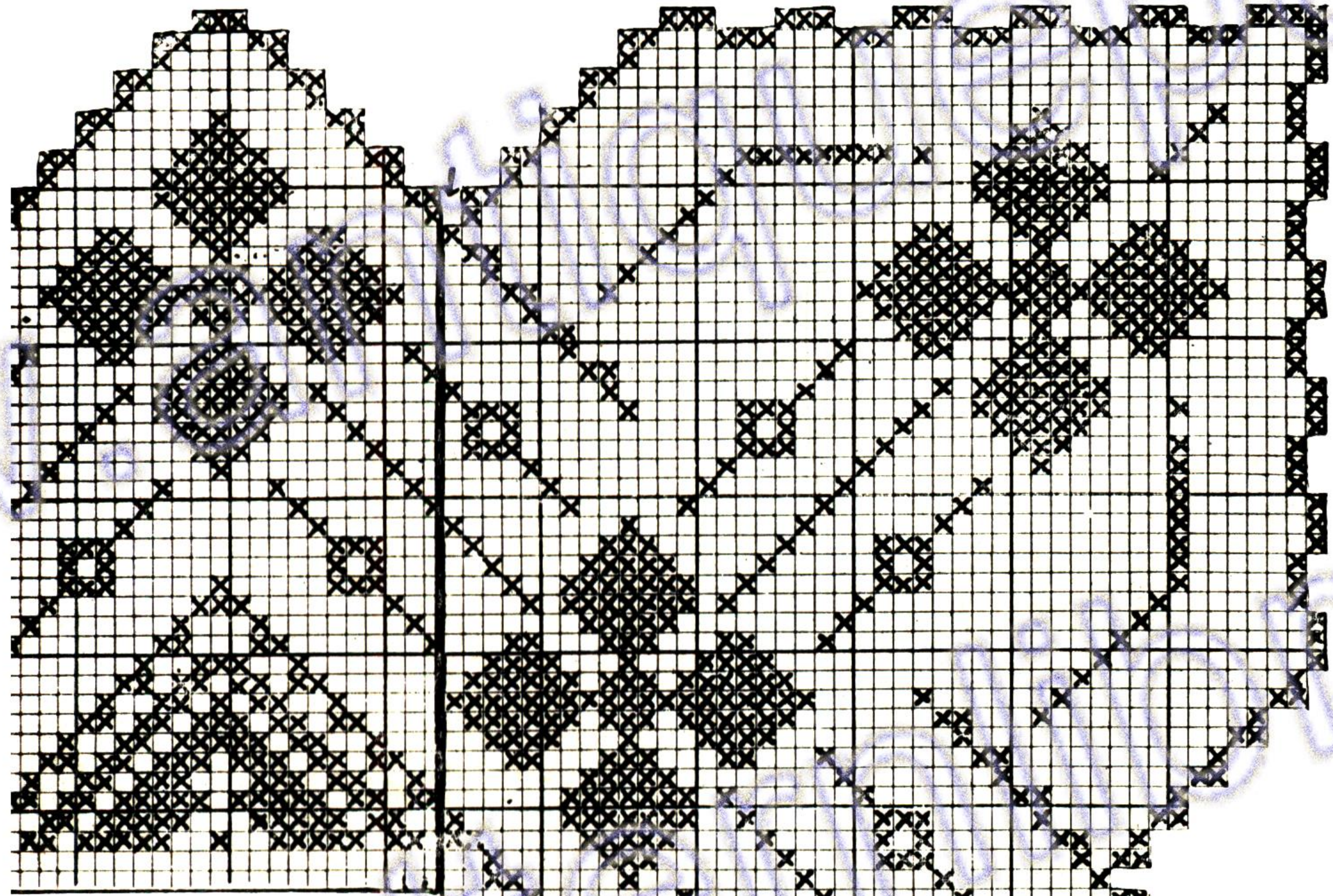
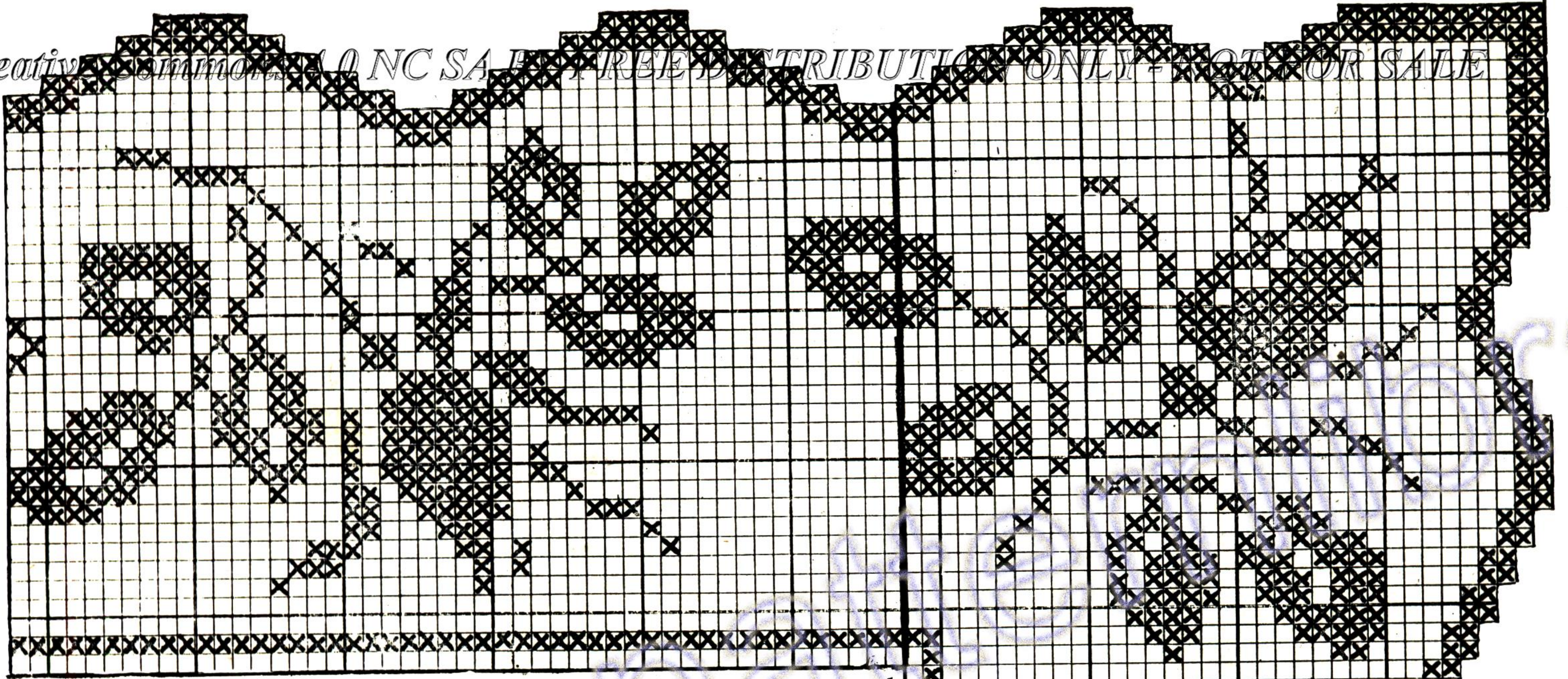
**16th row.**—1 tr into 4th ch from hook, 5 tr, 5 sps, 16 tr, 4 sps, 4 tr, 5 sps, 4 tr, 1 sp, 4 tr, 6 sps, 4 tr, 2 sps, 7 tr, 1 sp, 4 tr, 2 sps, 5 ch, turn.

Continue pattern from 1st to 42nd row for length required ending with 34th row when corner is reached, then work to within heavy line. Or last row of corner





ROSEBUDS



SNOWFLAKES

slip st across 7 tr, slip st down side of last tr, slip st across 10 tr of preceding row, 10 tr, slip st down side of last tr, continue to end of row. Break off thread and rejoin at arrow commencing with 8 ch and continue pattern from chart, then proceed from 37th row.

—42

—37

48—





# Hanky and

No. 1

No. 2

No. 3

**MATERIALS.** — Coats  Mercer-Crochet No. 60. Milwards Steel Crochet Hook No. 6. Handkerchiefs.

### DAISY LACE No. 1

**MEASUREMENTS.**— $\frac{3}{4}$  in. deep.

**1st row.**—Commence with a ring of 8 ch, 4 ch and 1 dbl tr into ring, 7 ch, 2 dbl tr (4 times) keeping the last loop of each st. on hook and working them off together with the last st, \* 19 ch, join with a ss the last 8 to form a ring, in doing this draw the ring downwards between finger and thumb so that the first part of ring is to the top, 4 ch, draw cotton through next 4th st of the 19 ch, 3 ch, draw cotton through centre st of last loop of previous daisy, 3 ch, 2 dbl tr (worked off tog.) in ring; 7 ch, 2 dbl tr 3 times into ring; rep. from \*.

For corner proceed in same way but after the 2 dbl tr following the loop which joins previous daisy, work 7 ch and 2 dbl tr in ring 5 times instead of 3.

**2nd row.**—1 ss in centre st of bar of 7 ch between daisies \* 3 ch, 2 dbl tr in ring of next daisy, then twice work 7 ch 2 dbl tr in ring, 3 ch 1 ss in centre of next bar of 7 ch; rep. from \*.

At the corner after the ss in previous bar, make 3 ch 2 dbl tr in corner ring, 3 ch 1 ss in following bar then proceed as usual.

**The Heading.**—1 dc in first loop of a daisy \* 6 ch 1 dc in 2nd loop, 8 ch 1 dc in first loop of next daisy and rep. from \*. At the corner after the last dc in the end daisy, make 5 ch and 1 dc in the first loop of the first daisy on next side, then continue as usual.



No. 4

# Edgings Corners

No. 5



**MATERIALS.** — Coats  Mercer-Crochet No. 40 (20 grm.). 1 ball selected colour. 1 Hemstitched Handkerchief. Milwards Steel Crochet Hook No. 4.

### Edging No. 4

**MEASUREMENTS.**—Depth of Edging =  $\frac{3}{4}$  in.

**1st row.**—Attach thread to one corner of handkerchief, 5 dc into same place as join, \* now work 127 dc along one side of handkerchief working into hemstitching, 5 dc into next corner sp ; repeat from \* along other 3 sides of handkerchief omitting 5 dc at end of last repeat, 1 ss into first dc.

**2nd row.**—1 dc into next dc, 5 ch, 1 dc into 4th ch from hook (picot made), 6 ch, 1 dc into 4th ch from hook (picot made), 2 ch (picot loop made), miss 1 dc, 1 dc into next dc,

\* one picot loop, miss 4 dc, 1 dc into next dc ; repeat from \* 25 times more, one picot loop, miss 1 dc, 1 dc into next dc ; repeat from first \* omitting 1 dc and one picot loop at end of last repeat, 1 ss into first dc.

**3rd row.**—Ss to centre of first picot loop, 1 dc into same place, \* one picot loop, 1 dc into next picot loop between picots ; repeat from \* all round, omitting 1 dc at end of last repeat, 1 ss into first dc.

**4th row.**—Ss to centre of first picot loop, \* 7 ch, 1 dc into next picot loop between picots ; repeat from \* working 11 ch loops instead of 7 ch at corners, omitting 1 dc at end of last repeat, 1 ss into first dc.

**5th row.**—Into each 7 ch loop work 2 dc 3 ch 2 dc 3 ch 2 dc 3 ch and 2 dc and into each 11 ch loop work (2 dc, 4 ch) 7 times and 2 dc, 1 ss into first dc. Fasten off.



# Neatly Scrolled

**MATERIALS.**— Coats  Mercer-Crochet No. 60 (20 grm.). 1 ball of selected colour. Milwards Steel Crochet Hook No. 5.

**TENSION.**—7 spaces = 1 in.

**MEASUREMENTS.**—12½ in. x 18½ in. approx. Lace 2 in. deep.

Commence with 48 ch.

**1st row.**—1 tr into 4th ch from hook, 1 tr into each of next 2 ch, \* 2 ch, miss 2 ch, 1 tr into next ch; repeat from \* 4 times more, 1 tr into each of next 6 ch, \* 2 ch, miss 2 ch, 1 tr into next ch; repeat from last \* 5 times more, 1 tr into each of next 3 ch, 3 ch, turn.

**2nd row.**—1 tr into each of next 3 tr, \* 2 ch, miss 2 ch, 1 tr into next tr (sp made over sp); repeat from \* 4 times more, 2 tr into next sp, 1 tr into next tr (blk made over sp), 1 tr into each of next 3 tr (blk made over blk), 2 ch, miss 2 tr, 1 tr into next tr (sp made over blk), \* 2 ch, miss 2 ch, 1 tr into next tr; repeat from last \* 4 times more, 1 tr into each of next 2 tr, 1 tr into turning ch, 3 ch, turn.

**3rd row.**—1 blk, 7 sps, 2 blks, 4 sps, 1 blk, 3 ch, turn.

**4th row.**—1 blk, 3 sps, 2 blks, 8 sps, 1 blk, 3 ch, turn.

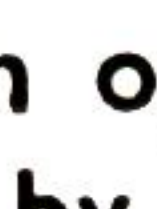

**5th row.**—1 blk, 9 sps, 1 blk, 3 sps, 1 blk, 3 ch, turn.

**6th row.**—1 blk, 2 sps, 2 blks, 8 sps, 1 blk, 3 ch, turn.

**7th row.**—1 blk, 2 sps, 4 blks, 3 sps, 1 blk, 2 sps, 1 blk, 3 ch, turn.



## ABBREVIATIONS

Ch.—chain; ss—slip stitch; dc.—double crochet; tr.—treble; dbl tr. and d. tr.—double treble; trip tr.—triple treble (thread 3 times over hook); sp.—space (i.e. 2 ch, miss 2 ch, 1 tr on next stitch); blk.—block (this consists of 4 tr, plus 3 tr for each additional block); rep.—repeat. When reading the charts, you will see that spaces are indicated with an open square  and the blocks by either a X or a solid square 





**8th row.**—1 blk, 2 sps, 1 blk, 2 sps, 2 blks, 2 sps, 2 blks, 1 sp, 2 ch, miss 2 tr, thread over hook, insert hook into next tr and pull loop through, 1 ch (this forms foundation ch for next tr), complete as for a tr, \* thread over hook, insert hook into foundation ch, and pull loop through, 1 ch, and complete as for a tr; repeat from \* once more, 1 tr into last foundation ch made (an extension blk made), 3 ch, turn.

**9th row.**—1 blk, 2 sps, 1 blk, 4 sps, 1 blk, 2 sps, 1 blk, 2 sps, 1 blk, 3 ch, turn.

Follow diagram to 18th row, omitting turning ch on last row, turn.

**19th row.**—1 ss into each of next 4 tr (a blk decreased), 3 ch, 1 blk, 8 sps, 2 blks, 2 sps, 1 blk, 3 ch, turn.

**20th row.**—1 blk, 2 sps, 1 blk, 3 sps, 4 blks, 2 sps, 1 blk, 5 ch, turn.

**21st row.**—1 tr into 4th ch from hook, 1 tr into next ch, 1 tr into next tr (an extension blk made), 2 sps, 2 blks, 2 sps, 2 blks, 2 sps, 1 blk, 2 sps, 1 blk, 3 ch, turn.

Follow diagram to 67th row, working to inside of heavy line, (when turning with a sp, turn with 5 ch).

**68th row.**—2 blks, 2 tr into next sp, 3 ch, 1 ss into each of next 7 tr, 3 ch, 3 blks, 2 tr into next sp, 3 ch, 1 ss into next tr.

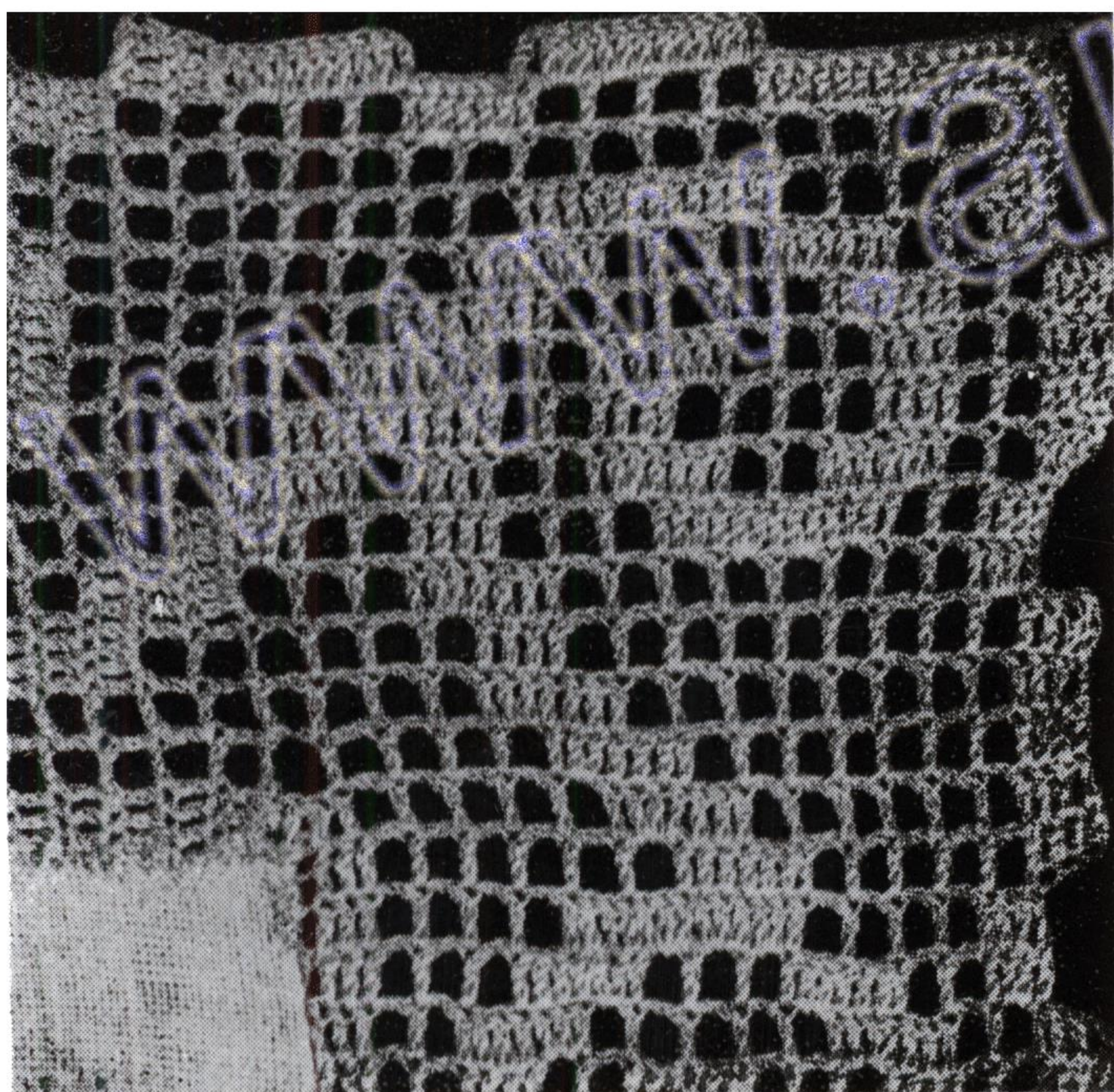
Fasten off.

Join thread in top of turning ch at beginning of 68th row and work along row-ends as follows :—

2 tr over tr of row-end, 1 tr in same place as tr, \* 2 ch, 1 tr into same place as tr of next row-end ; repeat from \* 7 times more, 2 tr over next row-end, 1 tr into same place as tr, 2 tr over next row-end, 1 tr into same place as tr, \* 2 ch, 1 tr into same place as tr of next row-end ; repeat from last \* twice more, 2 tr over next row-end, 1 tr into same place as tr, 3 ch, turn.

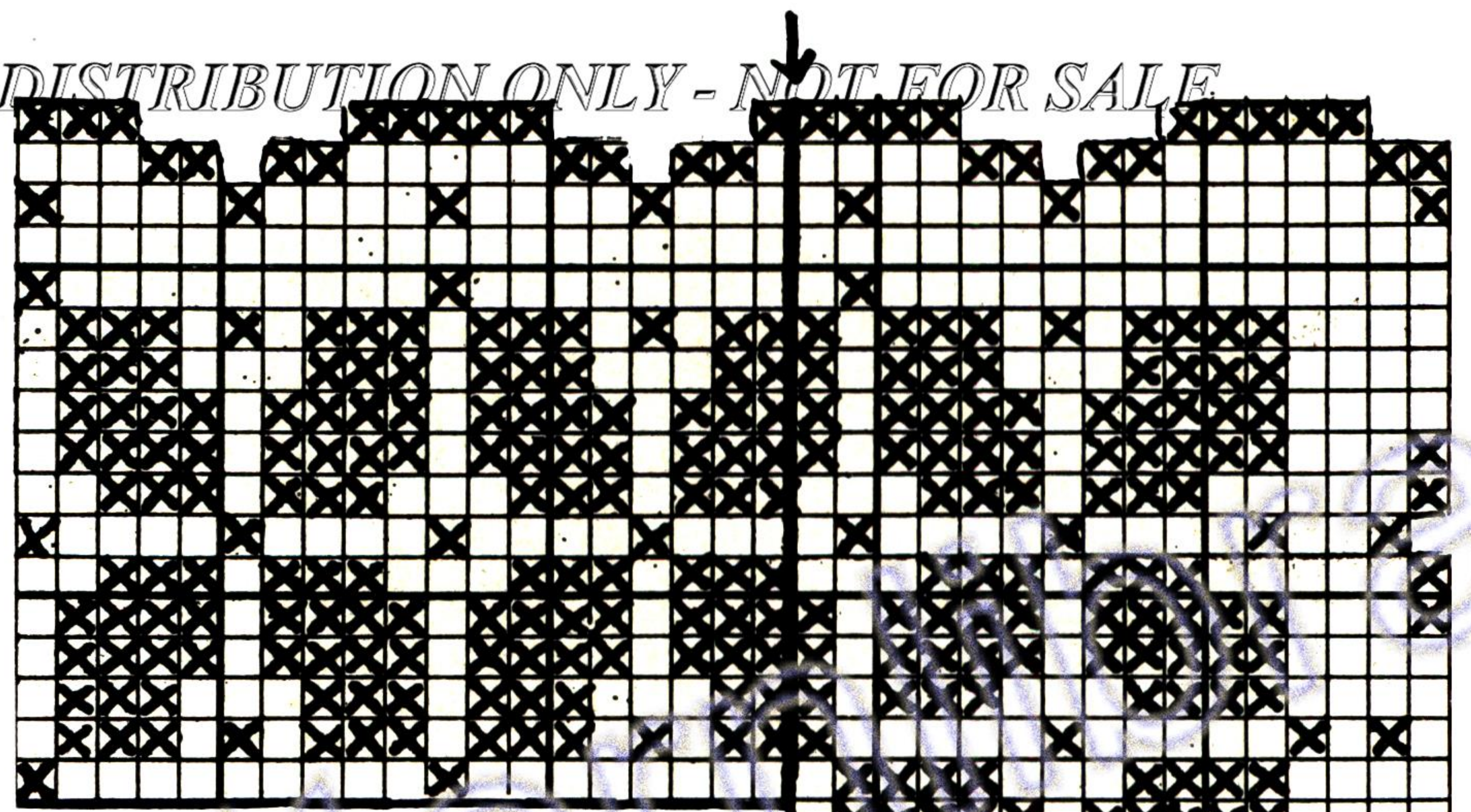
Follow diagram to second last row of next corner, and omit turning ch on last row worked, 1 ss into each of next 16 tr, 3 ch, 3 blks, 2 tr into next sp, 3 ch, 1 ss into each of next 7 tr, 3 ch, 3 blks, 3 ch, turn work and follow diagram to end, working first row over row-ends as before.

Diagram gives one half of design and is repeated once more.

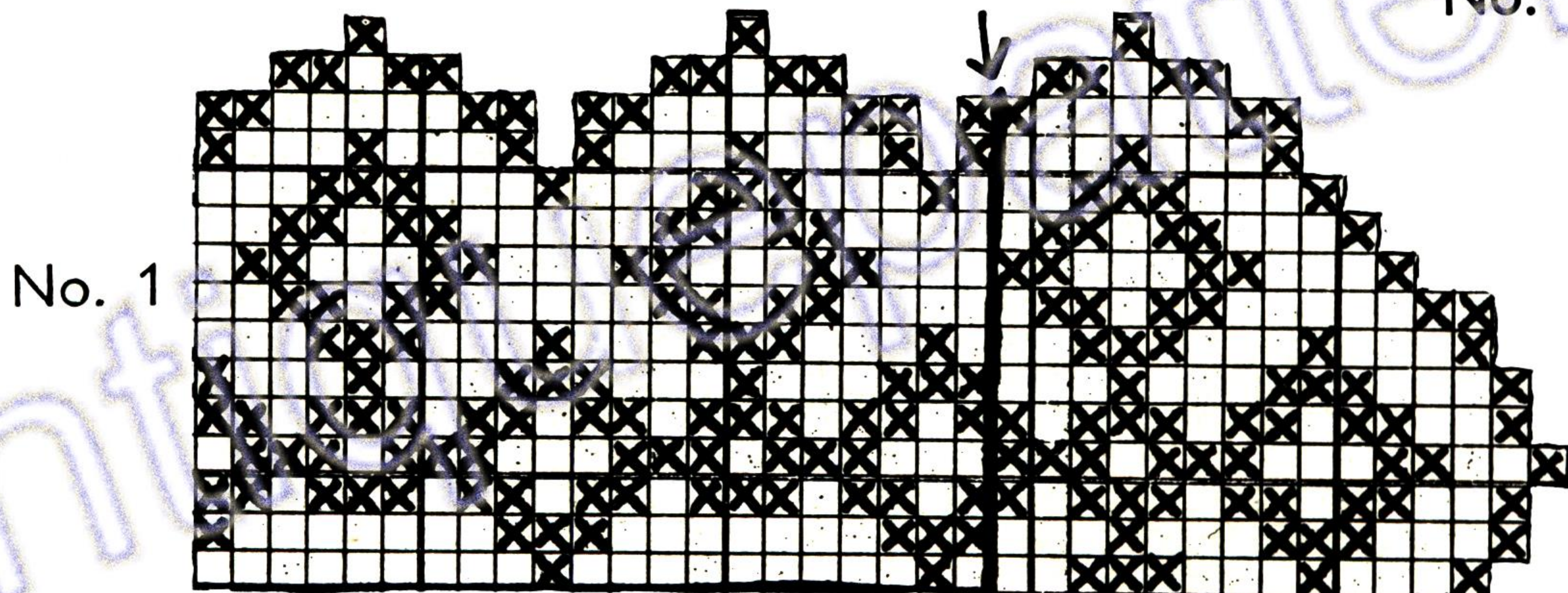




# Tray Mat Laces



No. 2



No. 1

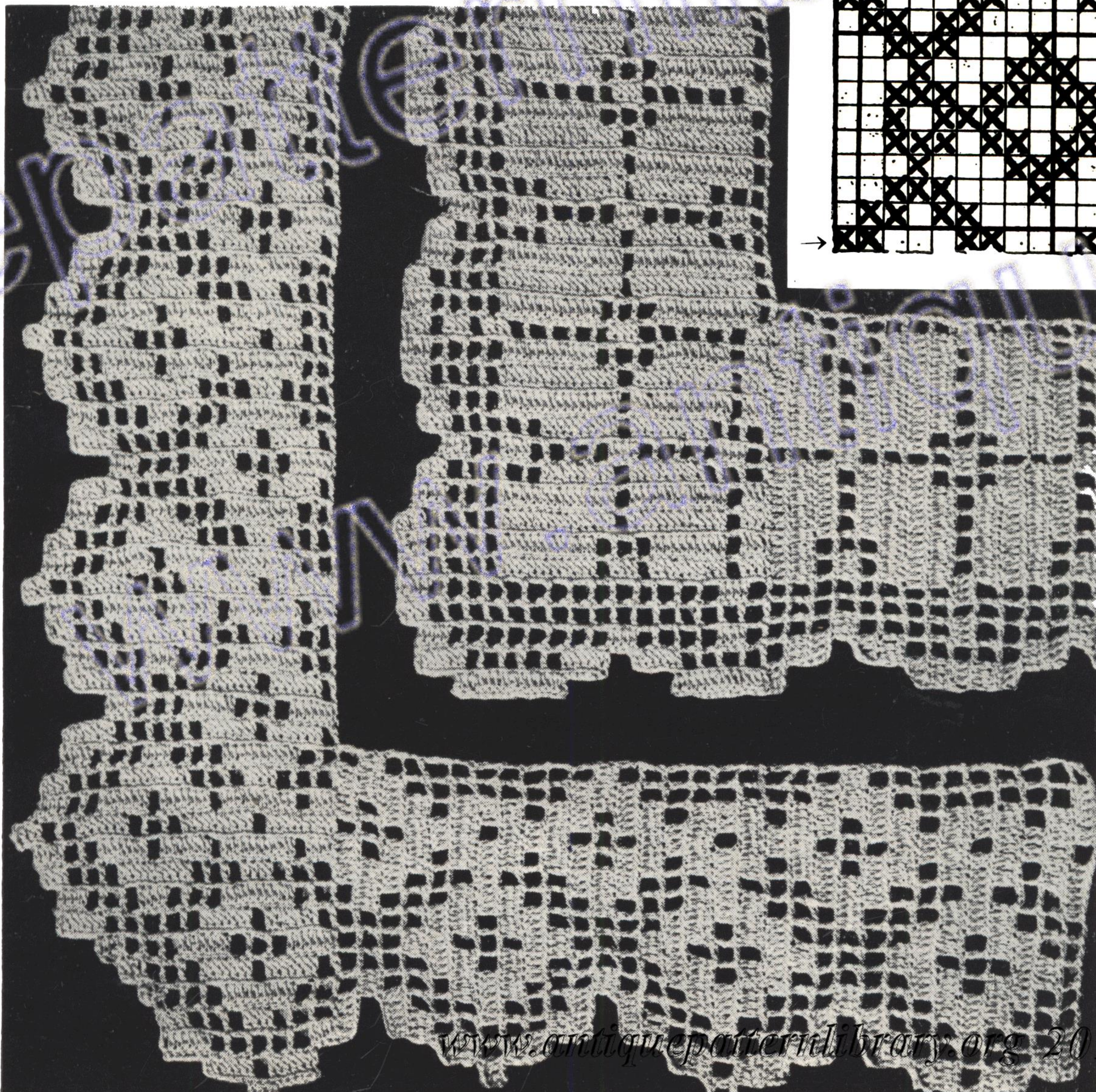
**MATERIALS.**—Coats  Mercer-Crochet No. 40 (20 gm.). Milwards Steel Crochet Hook No. 5.

**MEASUREMENTS.**— $2\frac{1}{4}$  ins. deep.

**TENSION.**—6 sps to 1 in.

No. 1

No. 2



**INSTRUCTIONS.**—No. 1

Commence with 36 ch.  
**1st row.**—1 tr into 4th ch from hook, 5 tr, 3 sps, 7 tr, 3 sps, 4 tr, 8 ch, turn.  
**2nd row.**—1 tr into 4th ch from hook, 5 tr, 5 sps, 7 tr, 1 sp, 7 tr, 1 sp, 5 ch, turn.  
**3rd row.**—1 tr into next tr, 1 sp, 10 tr, 3 sps, 4 tr, 3 sps, 4 tr, 5 ch, turn.  
**4th row.**—1 tr into 4th ch from hook, 2 tr, 3 sps, 10 tr, 3 sps, 4 tr, 3 sps, 5 ch, turn.  
**5th row.**—1 tr into next tr, 1 sp, 10 tr, 1 sp, 7 tr, 1 sp, 7 tr, 2 sps, 4 tr, 5 ch, turn.  
**6th row.**—1 tr into 4th ch from hook, 2 tr, 2 sps, 7 tr, 3 sps, 10 tr, 1 sp, 4 tr, 2 sps, 5 ch, turn.  
**7th row.**—1 tr into next tr, 1 sp, 10 tr, 1 sp, 7 tr, 1 sp, 7 tr, 2 sps, 4 tr, 3 ch, turn.  
**8th row.**—1 tr into next tr, 2 tr, 3 sps, 10 tr, 3 sps, 4 tr, 3 sps, 5 ch, turn.  
**9th row.**—1 tr into next tr, 1 sp, 10 tr, 3 sps, 4 tr, 3 sps, 4 tr, 3 ch, turn.  
**10th row.**—1 tr into next tr, 5 tr, 5 sps, 7 tr, 1 sp, 7 tr, 1 sp, 3 ch, turn.  
 Repeat from 1st to 10th row (beginning the 1st with 6 tr) for length required ending with 2nd row of pattern. Work the corner to within the heavy line, then break off thread. Rejoin at arrow and continue border.

Instructions for No. 2 are given on page Three.

Please turn to page Three.



No. 1

These edgings can either be worked on a foundation chain or directly into the edge of the material. In the latter case the number of dc worked into the edge should be the same as the number of dc in the first row.



No. 2

## Two Useful Edgings

**MATERIALS**—Coats  Mercer-Crochet No. 50. Milwards Steel Crochet Hook No. 4½.

**MEASUREMENTS**—As illustrated.

### No. 1

Make a number of chain (or dc) divisible by 16 with 8 over (1 pattern measures 1½ ins.).

**1st row.**—1 tr into 8th ch from hook, \* miss 1 ch, 1 ch, 1 tr into next, repeat from \* to end, 1 ch, turn.

**2nd row.**—Ss to middle of 1st space, \* 8 ch, miss 2 spaces, 1 dc in next (4 ch, miss 1 space, 1 dc into next space) 3 times, repeat from \* to 4th space from end, 8 ch 1 dc in last space, 1 ch, turn.

**3rd row.**—Ss to space of 8 ch, 5 ch, 7 dbl tr into same space, \* 3 ch, 1 dc into next space, 3 ch (2 dbl tr, 3 ch, 2 dbl tr) into next space, 3 ch, 1 dc, into next, 3 ch, 8 dbl tr into next, repeat from \* to end, 6 ch, turn.

**4th row.**—Miss 1st dbl tr, 1 dbl tr in next, (1 ch 1 dbl tr in next dbl tr) 6 times, \* 4 ch, 1 dc in space of 3 ch between dbl trs of previous row, 4 ch, 1 dbl tr in next dbl tr, (1 ch 1 dbl tr in next dbl tr) 7 times, repeat from \* to end, 7 ch, turn.

**5th row.**—Miss 1st dbl tr, 1 dbl tr in next, (2 ch 1 dbl tr in next) 6 times, \* 1 dbl tr in next dbl tr (2 ch 1 dbl tr in next dbl tr) 7 times, repeat from \* to end, 1 ch, turn.

**6th row.**—(1 dc, 1 tr, 1 dc) into each space of 2 ch.

Fasten off.

### No. 2

Start with a number of chain or dc divisible by 12 with 3 over.

**1st row.**—1 tr into 4th from hook, 1 tr into each ch to end, 1 ch, turn.

**2nd row.**—Ss to 3rd tr, 4 ch, 4 dbl tr into next, \* miss 5 tr, 5 dbl tr into next, repeat from \* to end, 8 ch, turn.

**3rd row.**—1 trip tr into 2nd dbl tr (3 ch, 1 trip tr) into each of next 3 dbl tr, \* miss 5 dbl tr, 1 trip tr into next, (3 ch, 1 trip tr) into each of next 4 dbl tr, repeat from \* to end, 6 ch, turn.

**4th row.**—1 dc into 2nd trip tr (6 ch, 1 dc) into each of next 2 trip tr, 6 ch, 1 dc into space between next 2 trip tr, \* (6 ch, 1 dc) into each of next 3 trip tr, 6 ch, 1 dc into space between next 2 trip tr, repeat from \* to end, 1 ch, turn.

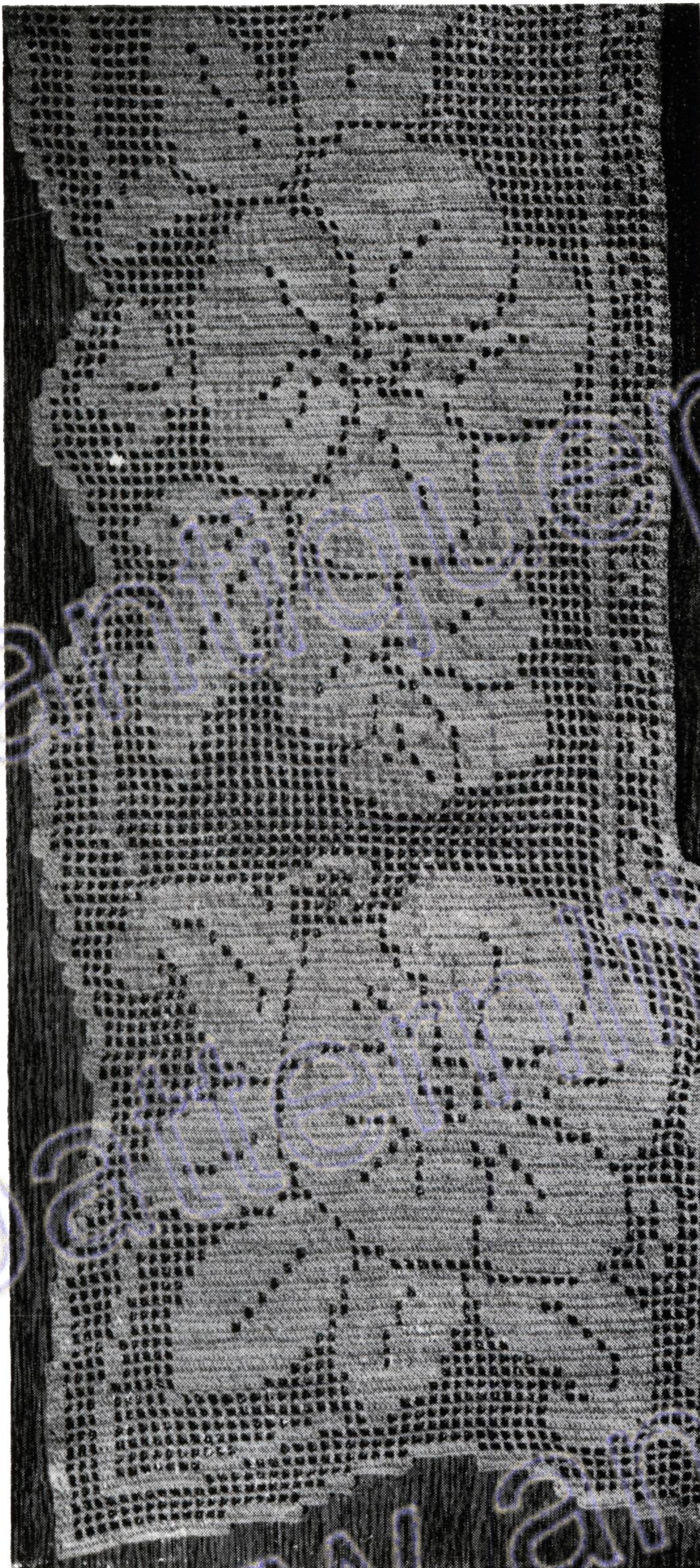
**5th row.**—Ss to centre of 1st space, (6 ch, 1 dc in next space) 3 times, \* 4 ch, 1 dc in next space, (6 ch, 1 dc in next space) 3 times, repeat from \* to end, 1 ch, turn.

**6th row.**—Ss to centre of 1st space, (6 ch, 1 dc into next space) twice, \* 8 ch, miss the space of 4 chain, 1 dc into next space (6 ch, 1 dc into next space) twice, repeat from \* to end, 1 ch, turn.

**7th row.**—Ss to centre of 1st space, 9 ch, ss to 4th ch, 3 ch, 1 dc into next space, \* 12 ch, miss the space of 8 ch, 1 dc into next space, 9 ch, ss to 4th ch, 3 ch, 1 dc in next space, repeat from \* to end. Fasten off.



# Pansies — A beautiful floral lace



**MATERIALS.**—Coats  Mercer-Crochet No. 50.  
A Milwards Steel Crochet Hook No. 6.

**MEASUREMENTS.**— $7\frac{1}{2}$  in. deep.

**TENSION.**— $6\frac{1}{2}$  sps to 1 in.

**INSTRUCTIONS.**—Commence with 153 ch.

**1st row.**—1 tr into 4th ch from hook, 2 tr, 5 sps, 4 tr, 4 sps, 7 tr, 16 sps, 16 tr, 10 sps, 4 tr, 1 sp, 4 tr, 2 sps, 4 tr, 3 ch, turn.

**2nd row.**—1 tr over next tr, 2 tr, 1 sp, 4 tr, 2 sps, 4 tr, 11 sps, 22 tr, 11 sps, 13 tr, 5 sps, 4 tr, 4 sps, 4 tr, 3 ch, turn.

**3rd row.**—1 tr over next tr, 2 tr, 4 sps, 4 tr, 5 sps, 16 tr, 8 sps, 25 tr, 12 sps, 4 tr, 1 sp, 4 tr, 2 sps, 4 tr, 3 ch, turn.

**4th row.**—1 tr over next tr, 2 tr, 4 sps, 4 tr, 13 sps, 7 tr, 1 sp, 16 tr, 6 sps, 10 tr, 1 sp, 7 tr, 5 sps, 4 tr, 4 sps, 4 tr, 3 ch, turn.

**5th row.**—1 tr over next tr, 2 tr, 4 sps, 4 tr, 5 sps, 10 tr, 1 sp, 10 tr, 4 sps, 13 tr, 3 sps, 7 tr, 13 sps, 4 tr, 4 sps, 4 tr, 3 ch, turn.

**6th row.**—1 tr over next tr, 2 tr, 4 sps, 4 tr, 13 sps, 16 tr, 1 sp, 10 tr, 4 sps, 10 tr, 1 sp, 10 tr, 5 sps, 4 tr, 4 sps, 4 tr, 3 ch, turn.

Continue pattern from 7th row of chart until corner is reached, then work to within the heavy line. Break off thread and rejoin at arrow. Commence with 5 ch then continue repeating pattern from 1st to 61st row.

## DAISY LACE No. 1—Continued from page Eight

**Edge.**—1 tr in first loop of a daisy \* 1 ch 1 picot (of 5 ch and 1 dc in first st) 1 ch 1 tr again in same loop, 1 ch 1 picot 1 ch 1 tr in 2nd loop of daisy, 1 ch 1 picot 1 ch 1 tr in same loop, then 3 ch 1 tr in first loop of next daisy and rep. from \*. At the corner work the same in and between each loop. Slip stitch to edge of handkerchief.

## SYLVIA No. 2

**MEASUREMENTS.**— $\frac{5}{8}$  in. deep.

Make a ring of 19 ch and work over the first 9 ch as follows:— 4 dc, then 6 ch with 1 dc in last dc, 6 ch, 1 ss into last dc,

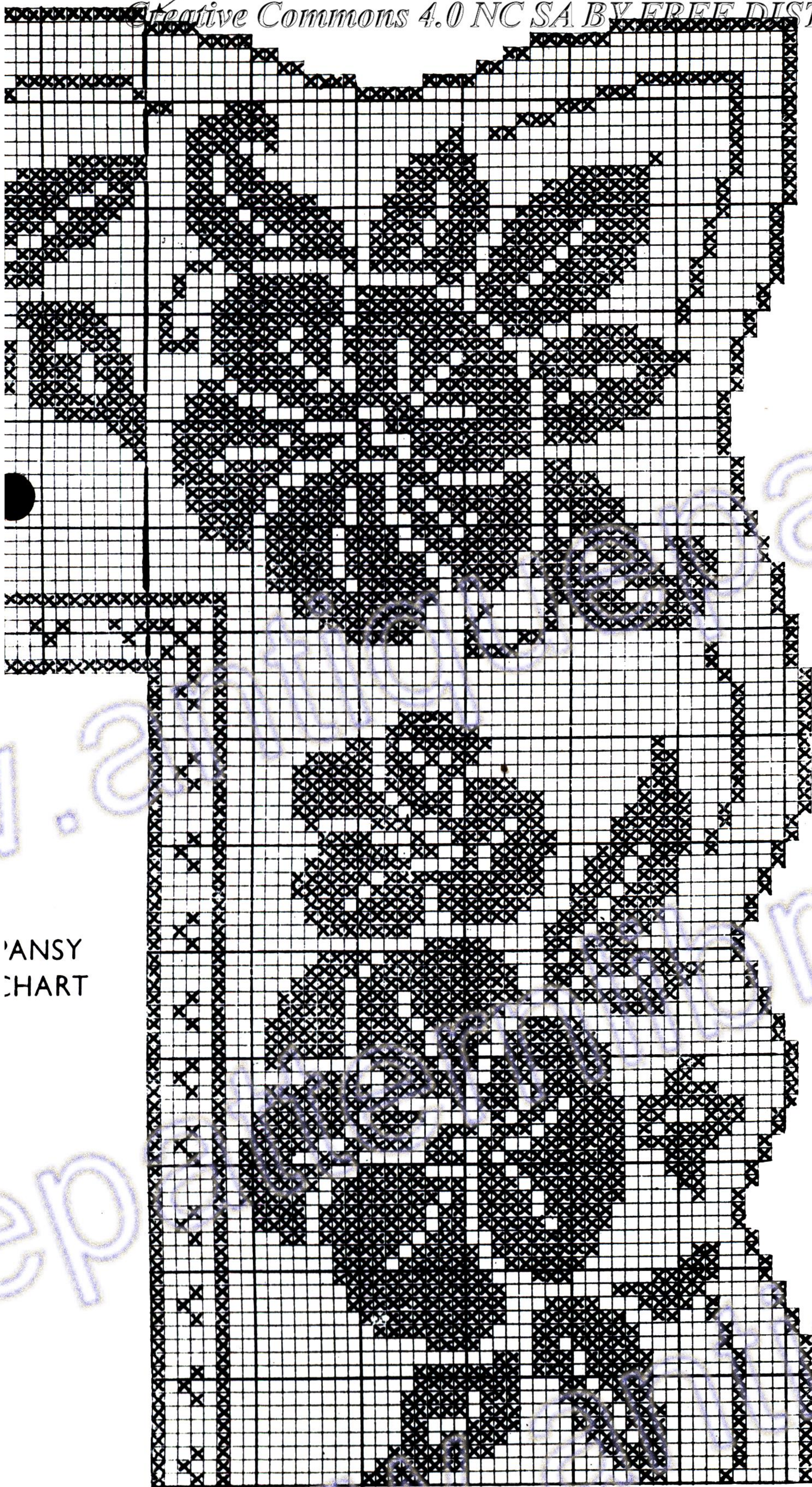
6 ch 1 dc into same place (this is a trefoil) 7 dc in ring, 5 ch 3 dc in ring \* 15 ch, then draw cotton through the 5th dc following the trefoil and over the last 9 ch of loop, work 4 dc 1 trefoil (as before) 7 dc 5 ch 3 dc; rep. from \*.

For the corner make the loop as usual and over the last 14 ch work 4 dc and 1 trefoil twice, 7 dc 5 ch 3 dc, continue as usual.

**Heading.**—1 tr in a loop \* 7 ch 1 tr in next loop; rep. from \*. At the corner after the tr of last loop make 2 ch 1 tr in corner loop, 2 ch 1 tr in next loop then proceed as usual.

Slip stitch to edge of handkerchief.






ANSY  
CHART

## HANKY EDGINGS AND CORNERS

Continued from page Nine

**MATERIALS.**—Coats  Mercer-Crochet No. 40 (20 gm.). 1 ball selected colour. 1 Hemstitched Handkerchief. 1 Milwards Steel Crochet Hook No. 4.

**MEASUREMENTS.**—Depth of Edging = 1 in.

### Edging No. 5

**1st row.**—Attach thread to one corner of handkerchief, 5 dc into same place as join, work dc all round handkerchief having 147 dc on each side plus 5 dc in each corner, ending with 1 ss into first dc.

**2nd row.**—5 ch, 1 tr into same place as last ss, \* 3 ch, miss 1 dc, 1 dbl tr 5 ch and 1 dbl tr into next dc, 3 ch, miss 1 dc, 1 tr 2 ch and 1 tr into next dc, 1 ch, miss 3 dc, 1 tr 2 ch and 1 tr into next dc, \* 6 ch, miss 6 dc, 1 dbl tr 5 ch and 1 dbl tr into next dc, 6 ch, miss 6 dc, 1 tr 2 ch and 1 tr into next dc, 1 ch, miss 3 dc, 1 tr 2 ch and 1 tr into next dc; repeat from last \* 7 times more; repeat from first \* omitting 1 tr 2 ch and 1 tr at end of last repeat, 1 ss into 3rd of 5 ch, turn, 1 ss into 1 ch sp just made, turn.

**3rd row.**—5 ch, 1 tr into same sp, \* 5 ch, 3 dbl tr into corner 5 ch sp leaving the last loop of each on hook, thread over and draw through all loops on hook (a cluster made), \* 3 ch, 1 cluster into same loop; repeat from last \* 3 times more, \* 5 ch, 1 tr 2 ch and 1 tr into next 1 ch sp, 5 ch, into next 5 ch sp work 4 clusters with 3 ch between each; repeat from last \* 7 times more, 5 ch, 1 tr 2 ch and 1 tr into next 1 ch sp; repeat from first \* omitting 1 tr 2 ch and 1 tr at end of last repeat, 1 ss into 3rd of 5 ch, 1 ss into first sp.

**4th row.**—3 ch, \* a 3 dbl tr cluster into next 5 ch sp, (5 ch, a 2 dbl tr cluster into 5th ch from hook, a 3 dbl tr cluster into next 3 ch sp) 4 times, \* 5 ch, a 2 dbl tr cluster into 5th ch from hook, a 3 dbl tr cluster into next 5 ch sp, 1 tr into next 2 ch sp, a 3 dbl tr cluster into next 5 ch sp, (5 ch, a 2 dbl tr cluster into 5th ch from hook, a 3 dbl tr cluster into next 3 ch sp) 3 times; repeat from last \* 7 times more, 5 ch, a 2 dbl tr cluster into 5th ch from hook, a 3 dbl tr cluster into next 5 ch sp, 1 tr into next 2 ch sp; repeat from first \* omitting 1 tr at end of last repeat, 1 ss into 3rd of 3 ch. Fasten off. Damp and press.

Continued from opposite page

### IRENE No. 3

**MEASUREMENTS.**— $\frac{1}{2}$  in. deep.

**INSTRUCTIONS.**—Commence with 8 ch and work 1 tr into first ch, turn.

**1st row.**—\* 5 ch, miss 2 ch, 1 tr into next st. turn; rep. from \* twice more (4 spaces).

**2nd row.**—5 ch, miss first space, 1 dc in next, 2 ch 1 dc into same space, 5 ch, miss 3rd space, 1 ss in next turn.

**3rd row.**—2 dc in space, 3 ch 2 dc in same space, 1 picot of 5 ch with 1 dc in first ch, 1 tr in loop of 2 ch 1 picot 1 tr in same space, 1 picot, into following 5 ch loop work 2 dc

3 ch 2 dc ss to adjoining tr of last space, 5 ch, miss 2 ch 1 tr in next ch, turn and commence at 1st row.

For the corner in the first row make only 2 spaces instead of 3, turn.

**2nd row.**—5 ch 1 dc in the angle of last made space, 2 ch 1 dc in same place, 5 ch, miss next space, and ss to 3rd space, turn.

**3rd row.**—2 dc 3 ch 2 dc in first loop, make 1 picot and 1 tr in 2 ch loop 4 times, 1 picot, in following loop work 2 dc 3 ch 2 dc, ss to tr of last space of first row, 5 ch 1 tr in top of previous space (forming a sp over corner sp), turn and continue from first row of lace.

Slip stitch to edge of handkerchief.