

MRS. HARRY S. GRABNER
1847 N. Anthony Blvd.
FT. WAYNE, IND.

BERNAT

Handicrafter

BOOK NO. 51-50¢

21 BULKY STYLES

Featuring

QUICK

LITTLE

JACKETS

*in Nylo Germantown
and Cuddlespun Yarn*



Time and the Jacket

The loveliest fashions are always the enduring ones that become classics . . . it is the clean, uncluttered line of good design that imparts this endearing quality. The jackets in this book have all the necessary ingredients, and they are destined, we feel, to remain on the fashion scene for a long time.

The smartest jackets are short jackets; those that come to a point just above or just below the waist. This length can be a perfect companion piece for the long, unbroken line of the very popular sheath or to emphasize the gay bouffancy of the full skirt.

The yarn and the pattern stitch supply a most important ingredient — *texture*. Bulky yarns, deeply ribbed or patterned, are breathtaking when combined with a slim, smooth frock . . . trimly jaunty when paired with a favorite skirt or slacks . . . pertly pretty with full-skirted afternoon or after-dark costumes.

Select one or several; there is a jacket for every moment, mood or occasion. The exciting color range, of *Bernat Nylo Germantown* or *Cuddlespun*, makes it possible for you to match every costume or whim.

Whether you choose to make a *Cuddlespun* or a *Nylo Germantown* Jacket, you will have all the advantages of *Bernat “50-50” Yarns* — this easy-to-care-for combination of 50% virgin wool for softness and comfort, and 50% Dupont Nylon for great strength and easy washing. The jackets you make with *Cuddlespun* and *Nylo Germantown* are quick and easy to knit and delightful to wear, and will remain fashion-wise for many warm and long wearing seasons to come.

maggie meehan

BERNAT

Handicrafter

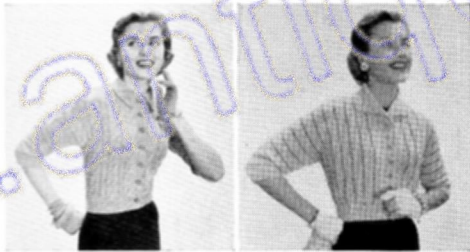
Book No. 51

MAGGIE MEEHAN, Fashion Director
CARLEEN GOLDSMITH, Knitting Editor

Credits: Photography by Dirone Studios
LaMode buttons



Style No. 453 — Page 3



Style No. 466 — Page 5

Style No. 478 — Page 7

Every effort has been made to have the knitting directions contained in this book accurate and complete; however we cannot be responsible for variance of individual knitters, human errors, or typographical mistakes.

Price; 50 cents in continental U. S. A., 75 cents in Canada, \$1 in other countries.

COPYRIGHT 1956, EMILE BERNAT & SONS COMPANY, JAMAICA PLAIN 30, MASSACHUSETTS, U. S. A.



Style No. 450 — Page 9



Style No. 488 — Page 11



Style No. 489 — Page 13



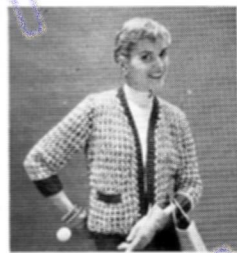
Style No. 3794 — Page 15



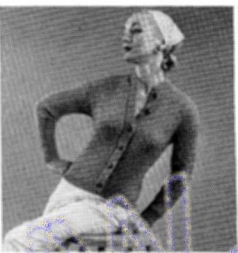
Style No. 484 — Page 15



Style No. 485 — Page 19



Style No. 324 — Page 19



Style No. 447 — Page 21



Style No. 469 — Page 23



Style No. 401 — Page 25



Style No. 487 — Page 25



Style No. 477 — Page 29



Style No. 439 — Page 29



Style No. 480 — Page 31



Style No. 481 — Page 33



Style No. 474 — Page 35



Style No. 479 — Page 37



Style No. 421 — Page 39



Style No. 453

These directions are for size 12. Changes for sizes 14 and 16 are in parentheses.

MATERIALS

BERNAT Nylo Germantown (2 oz. skeins) — 8(8-9)
Main Color (M C); 1 Contrasting Color (C C)
1 pair each straight knitting needles Nos. 6 and 10 OR ANY
SIZE NEEDLES WHICH WILL GIVE STITCH
GAUGE GIVEN BELOW
3 yds seam binding

GAUGE: 9 sts = 2 inches 6 rows = 1 inch

BACK: Using M C and No. 6 needles, cast on 88(92-96) sts. Work in stockinette st for 6 rows, ending with a P row. P the next 2 rows to form hemline. Change to No. 10 needles and continue in stockinette st until piece measures 12(12-12½) inches above hemline, ending with a P row. **SHAPE ARMHOLES:** At the beg of each of the next 2 rows bind off 3(3-4) sts. On the next row dec 1 st at each end of needle and repeat this dec every other row 22(23-24) times more. **SHAPE SHOULDERS:** At the beg of each of the next 4 rows bind off 4 sts. Bind off remaining 20(22-22) sts.

LEFT FRONT: Using M C and No. 6 needles, cast on 46(48-50) sts. Work in stockinette st for 6 rows, ending with a P row. P the next 2 rows to form hemline. Change to No. 10 needles and continue in stockinette st until piece measures 12(12-12½) inches above hemline, ending with a P row. **SHAPE ARMHOLE AND NECK:** At arm edge bind off 3(3-4) sts, K to last 2 sts, K 2 tog (neck dec). Continuing to dec 1 st at neck edge every 4th row 11(12-12) times more, at arm edge dec 1 st every other row 23(24-25) times. **SHAPE SHOULDER:** At arm edge bind off 4 sts twice.

RIGHT FRONT: Work to correspond to left front, reversing all shaping.

SLEEVES: Using M C and No. 10 needles, cast on 68(72-76) sts. Work even in stockinette st until piece measures 10 inches. **SHAPE CAP:** At the beg of each of the next 2 rows bind off 3(3-4) sts. Dec 1 st at each end of needle EVERY

ROW 12(14-14) times and every other row 17(17-18) times. Bind off remaining 4 sts.

STRIPING PATTERN FOR BAND: Work in stockinette st as follows: * 10 rows M C, 4 rows C C. Break off C C, leaving a 4 inch end. Repeat from * for striping pattern.

LEFT FRONT BAND: Using M C and No. 10 needles, cast on 3 sts. Row 1: K, inc 1 st each end of needle. Row 2: Inc 1 st, P to end of row. Working in striping pattern, repeat these 2 rows until there are 39 sts. Mark END of K row for inner edge and work as follows: Row 1: K 2 tog, K to end of row, inc 1 st in last st. Row 2: Purl. Repeat these 2 rows until inner edge is same length as front edge to start of neck shaping, ending with a P row. **SHAPE NECK:** Row 1: Continuing in striping pattern, K 2 tog, K to end of row (dec made). Rows 2 and 4: Purl. Row 3: K 2 tog, K to last st, inc 1 st in last st. Repeat these 4 rows 12 times more — 26 sts. Continue in striping pattern, dec at beg and inc at end of K rows in same manner as before until piece is long enough to fit to centre back of neck, ending with a P row. **SHAPE BACK OF NECK:** Row 1: K, dec 1 st each end of needle. Row 2: P 2 tog, P to end of row. Repeat last 2 rows until 3 sts remain. Bind off.

RIGHT FRONT BAND: Using M C and No. 10 needles, cast on 3 sts. Row 1: K, inc 1 st each end of needle. Row 2: P to last st, inc 1 st in last st. Finish to correspond to left front band, reversing all shaping.

LEFT CUFF: Using M C and No. 10 needles, cast on 3 sts. Working in striping pattern, repeat Rows 1 and 2 of left front band until there are 30 sts. Then work even, dec at beg and inc at end of K rows, until inner edge measures 15(16-17) inches, ending with a P row. Repeat Rows 1 and 2 of back of neck shaping until 3 sts remain. Bind off.

RIGHT CUFF: Work in same manner as right front band.

FINISHING: Sew underarm, shoulder, sleeve and cuff seams. Set in sleeves. Hem jacket. Sew on cuffs and front bands. Face outer edges of cuffs and front bands with seam binding. Sew bands tog at back of neck for 1½ inches. Block.



Style No. 478

These directions are for size 12. Changes for sizes 14 and 16 are in parentheses.

MATERIALS

BERNAT Nylo Germantown (2 oz. skeins) — 7(8–8) Main Color (M C); 1 Contrasting Color (C C)
1 pair each straight knitting needles Nos. 4 and 8 OR ANY SIZE NEEDLES WHICH WILL GIVE THE STITCH GAUGE GIVEN BELOW
1 aluminum crochet hook No. 4/E
8 buttons

GAUGE: 5 sts = 1 inch 7 rows = 1 inch

PATTERN STITCH: Multiple of 6 sts plus 1.

Row 1: * P 1, K 5, repeat from * ending P 1.

Row 2: Purl.

Repeat these 2 rows for pattern stitch.

BACK: Using No. 4 needles and M C, cast on 68(74–78) sts. K 1, P 1 in ribbing for 2 inches. P the next row, inc at even intervals to 75(81–85) sts. Change to No. 8 needles and work as follows: Row 1: K 4(4–3); put a marker on needle; work Row 1 of pattern st on next 67(73–79) sts; put a marker on needle; K 4(4–3). Keeping the 67(73–79) sts between markers in pattern st and all other sts in stockinette st, work even until piece measures 3(3–3½) inches. On the next row inc 1 st each end of needle and repeat this inc every 1 inch 4 times more, forming new patterns as sts are increased, and ending with a P row. **SHAPE DOLMAN SLEEVES:** On the next row inc 1 st each end of needle and repeat this inc every other row twice more. At the beg of each of the next 10 rows cast on 8 sts. Work even in pattern as established on 171(177–181) sts until sleeves measure 4¾(5–5¼) inches above last group of cast on sts. **SHAPE SHOULDERS:** At the beg of each of the next 2 rows bind off 4(7–8) sts. At the beg of each of the next 28 rows bind off 5 sts. Bind off remaining 23(23–25) sts.

LEFT FRONT: Using No. 4 needles, cast on 41(43–45) sts. Row 1: K 1, P 1 in ribbing on 32(34–36) sts; work last 9 sts in seed st (front border). Row 2: Work 9 sts in seed st, K 1, P 1 in ribbing to end of row. Repeat these 2 rows for 2 inches, ending with Row 1. On the next row work 9 sts in seed st and put these 9 sts just worked on a holder to be

worked later for front border, P remaining sts, inc at even intervals to 37(40–42) sts. Change to No. 8 needles and work as follows: Row 1: K 4(4–3); put a marker on needle; work Row 1 of pattern st on next 31(31–37) sts; put a marker on needle; K 2(5–2). Keeping the 31(31–37) sts between markers in pattern st and all other sts in stockinette st, work even until piece measures 3(3–3½) inches. On the next row inc 1 st at arm edge and repeat this inc every 1 inch 4 times more, forming new patterns as sts are increased and ending with a P row. **SHAPE DOLMAN SLEEVE:** At arm edge inc 1 st and repeat this inc every other row twice more. At arm edge cast on 8 sts 5 times. Work even in pattern as established on 85(88–90) sts until sleeve measures 4¾(5–5¼) inches above last group of cast on sts. **SHAPE SHOULDER:** At arm edge bind off 4(7–8) sts once and 5 sts 8 times. **SHAPE NECK:** Continuing to bind off 5 sts at arm edge 6 times more, at front edge bind off 5(5–6) sts once and 2 sts 3 times. **LEFT FRONT BORDER:** Sl 9 sts from holder onto No. 4 needle. Continue in seed st until piece is same length as front to start of neck shaping. Put these 9 sts on a holder.

RIGHT FRONT AND RIGHT FRONT BORDER: Work to correspond to left front and left front border, reversing placing of pattern and all shaping and forming first buttonhole when piece measures ½ inch. **BUTTONHOLE:** Starting at front edge, work 3 sts, bind off the next 3 sts, work to end of row. On the next row cast on 3 sts over those bound off previous row. Make 7 more buttonholes, evenly spaced — the last one to be made at start of neck shaping.

FINISHING: Sew shoulder seams. **CUFFS:** Using No. 4 needles, with right side facing you pick up 46(48–50) sts on lower sleeve edge. K 1, P 1 in ribbing for 2 inches. Bind off in ribbing. Sew underarm seams. Sew front borders in place. **COLLAR:** With wrong side facing you sl 9 sts of left front border onto No. 4 needles, join M C and work these 9 sts in seed st, pick up 53(53–55) sts around neck to 9 sts of right front border and work these 9 sts in seed st to same needle. Continue in seed st on 71(71–73) sts until piece measures 2½ inches. Bind off. **CONTRASTING STRIPES:** Using a double strand of C C, run through P ribs on right side of work. Block. Finish buttonholes. Sew on buttons.



These directions are for size 12. Changes for sizes 14 and 16 are in parentheses.

MATERIALS

BERNAT Star Spray (2 oz. skeins) — 4(4-5)
1 pair straight knitting needles No. 10 OR ANY SIZE
NEEDLE WHICH WILL GIVE THE STITCH
GAUGE BELOW
1 aluminum crochet hook No. 5/F

GAUGE: 9 sts = 2 inches 6 rows = 1 inch

PATTERN STITCH: Multiple of 4 sts.

Rows 1 and 2: * K 2, P 2, repeat from * across row.

Rows 3 and 4: * P 2, K 2, repeat from * across row.

Repeat these 4 rows for pattern stitch.

BACK: Cast on 4 sts. Working in pattern st, at the beg of each of the next 18(20-22) rows cast on 2 sts. At the beg of each of the next 10 rows cast on 4 sts. Work even on 80(84-88) sts until piece measures 2½ inches above last group of cast on sts. **SHAPE SLEEVES:** At the beg of each of the

next 12 rows cast on 2 sts. At the beg of each of the next 2 rows cast on 8 sts. Work even on 120(124-128) sts until sleeves measure 6¼(6½-6¾) inches above last group of cast on sts. Put a marker in work to mark centre of sleeves. **SHAPE NECK:** Work 48(50-52) sts; join another ball of yarn and bind off centre 24 sts; work last 48(50-52) sts. Work even on both sides at once until sleeves measure 5(5¼-5½) inches above marker in work. **SHAPE FRONTS:** At each front edge dec 1 st and repeat this dec every other row 3 times more. **SHAPE FRONT SLEEVES:** Continuing to dec 1 st at each front edge every other row 5 times more and to bind off 4 sts 4 times, at each arm edge bind off 8 sts once and 2 sts 6 times. Work even on 3(5-7) sts of each side until piece measures 2½ inches above last group of bound off sts at underarm. Bind off.

FINISHING: Sew underarm and sleeve seams. Work 2 rows s c around entire shrug. **FRINGE:** Cut yarn 2 inches long. Knot 2 strands of yarn in each st around entire shrug and on sleeves. Block.

Style No. 484 Shown on Page 16

These directions are for size 12. Changes for sizes 14 and 16 are in parentheses.

MATERIALS

BERNAT Nylo Germantown (2 oz. skeins) — 3(4-4)
1 pair straight knitting needles No. 10 OR ANY SIZE
NEEDLES WHICH WILL GIVE THE STITCH
GAUGE GIVEN BELOW
1 aluminum crochet hook No. 4/E
7 buttons
1 yd 1 inch grosgrain ribbon

GAUGE: 9 sts = 2 inches 6 rows = 1 inch

BACK: Cast on 78(82-88) sts. K 2, P 2 in ribbing for 1 inch. Then work even in stockinette st until piece measures 4½(4½-5) inches, ending with a P row. **SHAPE RAGLAN ARMHOLES:** At the beg of each of the next 2 rows bind off 4 sts. Work as follows: Row 1: K 2, K 2 tog (dec), K to last 4 sts, sl 1, K 1, pssso, K 2. Row 2: Purl. Repeat these 2 rows 22(24-26) times more. Put remaining 24(24-26) sts on a holder.

LEFT FRONT: Cast on 44(46-48) sts. K 2, P 2 in ribbing for 1 inch. Then work even in stockinette st until piece measures 4½(4½-5) inches, ending with a P row. **SHAPE RAGLAN ARMHOLE:** At arm edge bind off 4 sts. Work as follows: Row 1: Purl. Row 2: K 2, K 2 tog (dec), K to end of row. Repeat these 2 rows 20(22-24) times more. **SHAPE NECK:** Continuing to dec 1 st at arm edge every other row twice more, at neck edge sl 8 sts on a holder. At neck edge bind off 3 sts 3 times.

RIGHT FRONT: Work to correspond to left front, reversing all shaping and forming first buttonhole when piece measures ½ inch. **BUTTONHOLE:** Starting at front edge, work 2 sts, bind off the next 2 sts, work to end of row. On the next row cast on 2 sts over those bound off previous row. Make 6 more buttonholes, evenly spaced — the last one to be made at start of neck shaping. Decrease at arm edge as follows: Row 1: K to last 4 sts, sl 1, K 1, pssso, K 2. Row 2: Purl.

SLEEVES: Cast on 50(54-58) sts. K 2, P 2 in ribbing for 1 inch. Then work in stockinette st, inc 1 st each end of needle every ½ inch 3 times. Work even on 56(60-64) sts until piece measures 3½ inches, ending with a P row. **SHAPE RAGLAN CAP:** At the beg of each of the next 2 rows bind off 4 sts. Dec 1 st each end of needle in same manner as on back until 6 sts remain. Mark one edge of sleeve as front edge. Continuing to dec 1 st at back edge every other row in same manner as before twice more, at front edge bind off 2 sts twice. On second sleeve reverse top shaping.

FINISHING: Sew sleeves to back and front armholes. Sew underarm and sleeve seams. **NECKBAND:** With right side facing you pick up 66(70-74) sts around neck, including sts from holders. K 2, P 2 in ribbing for ½ inch. Bind off in ribbing. Work 1 row s c on each front edge. Block. Face fronts with ribbon. Finish buttonholes. Sew on buttons.



Style No. 469

These directions are for size 12. Changes for sizes 14 and 16 are in parentheses.

MATERIALS

BERNAT Cuddlespun (2 oz. skeins) — 8(9–10)
1 pair straight knitting needles No. 10½ OR ANY SIZE
NEEDLES WHICH WILL GIVE THE STITCH
GAUGE GIVEN BELOW
1 aluminum crochet hook No. 10/J

GAUGE: 7 sts = 2 inches 6 rows = 1 inch

PATTERN STITCH: Multiple of 4 sts plus 2.

Row 1: * Inserting needle in BACK LOOP of sts K 2, P 2, repeat from * ending inserting needle in BACK LOOP of sts K 2.

Repeat this row for pattern stitch.

BACK: Cast on 60(64–64) sts. K 2, P 2 in ribbing for 1¼ inches, inc 1 st each end of needle on last row. Work even in pattern st on 62(66–66) sts until piece measures 9(9–9½) inches. **SHAPE ARMHOLES:** At the beg of each of the next 2 rows bind off 4 sts. Dec 1 st each end of needle every other row 4(5–4) times. Work even on 46(48–50) sts until armholes measure 8(8¼–8½) inches. **SHAPE SHOULDERS:** At the beg of each of the next 2 rows bind off 8 sts. At the beg of each of the next 2 rows bind off 8(9–9) sts. Bind off remaining 14(14–16) sts.

LEFT FRONT: Cast on 32(36–40) sts. K 2, P 2 in ribbing for 1¼ inches. Row 1: Work in pattern st for 30(34–38) sts, P 2. Row 2: K 2, work in pattern st to end of row. Repeat these 2 rows until piece measures 9(9–9½) inches, ending with Row 2. **SHAPE ARMHOLE:** At arm edge bind off 4(4–6) sts. At same edge dec 1 st every other row 4(5–5)

times. Work even on 24(27–29) sts until armhole measures 6(6¼–6½) inches. **SHAPE NECK:** At front edge bind off 5(6–7) sts. Dec 1 st at same edge every other row 3(4–5) times. Work even on 16(17–17) sts until armhole measures 8(8¼–8½) inches. **SHAPE SHOULDER:** At arm edge bind off 8 sts once and 8(9–9) sts once.

RIGHT FRONT: Cast on 32(36–40) sts. P 2, K 2 in ribbing for 1¼ inches. Finish to correspond to left front, reversing all shaping.

SLEEVES: Cast on 36(40–40) sts. K 2, P 2 in ribbing for 1¼ inches, inc 1 st each end of needle on last row. Work in pattern st, inc 1 st each end of needle every 1½(2½–1) inches 3(2–4) times. Work even on 44(46–50) sts until piece measures 8 inches. **SHAPE CAP:** At the beg of each of the next 2 rows bind off 4(4–5) sts. Dec 1 st each end of needle every other row 4(4–3) times and every 4th row 5(6–7) times. At the beg of each of the next 6 rows bind off 2 sts. Bind off remaining sts.

COLLAR: Cast on 50(50–54) sts. Row 1: P 2, work in pattern st for 46(46–50) sts, P 2. Row 2: K 2, work in pattern st for 46(46–50) sts, K 2. Repeat these 2 rows for 3 inches, ending with Row 2. On the next row P 2, K 2 in ribbing and continue in ribbing until piece measures 4 inches. Bind off in ribbing.

FINISHING: Sew underarm, shoulder and sleeve seams. Set in sleeves. Sew cast on edge of collar to neck edge. Work 2 rows s c on each front edge. Steam seams. Turn up sleeves for 2½ inches to form cuffs and tack.



Style No. 401

These directions are for size 12. Changes for sizes 14 and 16 are in parentheses.

MATERIALS

BERNAT Nylo Germantown (2 oz. skeins) — 3(4-4) Main Color (M C); 3 Contrasting Color (C C)

1 pair each straight knitting needles Nos. 6 and 10 OR ANY SIZE NEEDLES WHICH WILL GIVE THE STITCH GAUGE GIVEN BELOW

7 buttons

GAUGE: 3 sts = 1 inch 7 rows = 1 inch

PATTERN STITCH: Multiple of 2 sts.

Row 1 (right side of pattern stitch): Using M C, purl.

Row 2: Using C C, * P 1, K the next st in the row below, repeat from * ending P 2.

Row 3: Using C C, purl.

Row 4: Using M C, P 2, * K the next st in the row below, P 1, repeat from * across row.

Repeat these 4 rows for pattern stitch.

BACK: Using No. 6 needles and M C, cast on 54(58-62) sts. K 1, P 1 in ribbing for 2½ inches. Change to No. 10 needles and work even in pattern st until piece measures 7(7-7½) inches. **SHAPE DOLMAN SLEEVES:** At the beg of each of the next 24 rows cast on 2 sts. At the beg of each of the next 4 rows cast on 8 sts. Work even on 134(138-142) sts until sleeves measure 4¾(5-5¼) inches above last group of cast on sts. **SHAPE SHOULDERS:** At the beg of each of the next 22 rows bind off 5 sts. At the beg of each of the next 2 rows bind off 5(7-9) sts. Bind off remaining 14 sts.

LEFT FRONT: Using No. 6 needles and M C, cast on 36(38-40) sts. K 1, P 1 in ribbing for 2½ inches. Change to No. 10 needles and work 30(32-34) sts in pattern st; sl

last 6 sts on a holder to be worked later for front border. Work even in pattern st until piece measures 7(7-7½) inches. **SHAPE DOLMAN SLEEVE:** At arm edge cast on 2 sts 12 times and 8 sts twice. Work even on 70(72-74) sts until sleeve measures 4¾(5-5¼) inches above last group of cast on sts. **SHAPE NECK AND SHOULDER:** At front edge bind off 5 sts once. Dec 1 st at same edge every other row 5 times and at arm edge bind off 5 sts 11 times and 5(7-9) sts once. **FRONT BORDER:** Sl 6 sts from holder onto No. 6 needles. Join M C and continue in ribbing until piece is same length as front to start of neck shaping. Sl these sts on a holder.

RIGHT FRONT AND RIGHT FRONT BORDER: Work to correspond to left front and left front border, reversing all shaping and forming first buttonhole when piece measures ¾ inch. **BUTTONHOLE:** Starting at front edge, work 2 sts, bind off the next 2 sts, work to end of row. On the next row cast on 2 sts over those bound off previous row. Make 6 more buttonholes, evenly spaced — the last one to be made in neckband.

FINISHING: Sew shoulder seams. **CUFFS:** Using No. 6 needles and M C, with right side facing you, pick up 42(44-46) sts across lower edge of sleeve. K 1, P 1 in ribbing for 2 inches. Bind off in ribbing. Sew front borders in place. **NECKBAND:** Using No. 6 needles and M C, with right side facing you pick up 68(70-72) sts around neck, including sts from holders. K 1, P 1 in ribbing for 1 row. On the next row work another buttonhole in same manner as before on right front and continue in ribbing until neckband measures 1 inch. Bind off in ribbing. Sew underarm seams. Block. Sew on buttons. Finish buttonholes.

Style No. 487 Shown on Page 26

These directions are for size 12. Changes for sizes 14 and 16 are in parentheses.

MATERIALS

BERNAT Nylo Germantown (2 oz. skeins) — 5 (6-6)

1 pair straight knitting needles No. 10 OR ANY SIZE NEEDLES WHICH WILL GIVE THE STITCH GAUGE GIVEN BELOW

1 aluminum crochet hook No. 5/F

16 Flower Appliques

4 Crystals

6 Pearl Rings

GAUGE: 9 sts = 2 inches 6 rows = 1 inch

BACK: Cast on 79 (83-87) sts. Row 1: K 3 (5-4), * P 1, K 5, repeat from * ending P 1, K 3 (5-4). Row 2: P 3 (5-4), * K 1, P 5, repeat from * ending K 1, P 3 (5-4). Repeat these 2 rows until piece measures 6½ (6½-7) inches. **SHAPE ARMHOLES:** At the beg of each of the next 2 rows bind off 6 sts. Dec 1 st each end of needle every other row 4 times. Work even on 59 (63-67) sts until armholes measure 7½ (7¾-8) inches. **SHAPE SHOULDERS:** At

the beg of each of the next 2 rows bind off 6 (7-8) sts. At the beg of each of the next 4 rows bind off 7 sts. Bind off remaining 19 (21-23) sts.

LEFT FRONT: Cast on 41 (43-45) sts. Row 1: K 3 (5-4), * P 1, K 5, repeat from * ending P 1, K 7 (7-4). Row 2: P 7 (7-4), * K 1, P 5, repeat from * ending K 1, P 3 (5-4). Repeat these 2 rows until piece measures 6½ (6½-7) inches, ending with Row 2. **SHAPE ARMHOLE:** At the beg of the next row bind off 6 sts. Dec 1 st at the same edge every other row 4 times. Work even on 31 (33-35) sts until armhole measures 5¾ (6-6¼) inches. **SHAPE NECK:** At front edge bind off 7 (8-9) sts once and 2 sts twice. Work even on 20 (21-22) sts until armhole measures 7½ (7¾-8) inches. **SHAPE SHOULDER:** At arm edge bind off 6 (7-8) sts once and 7 sts twice.

RIGHT FRONT: Work to correspond to left front, reversing all shaping and pattern.

(Continued on page 33)



Style No.
487
DIRECTIONS ON
PAGE 25
26
BERNAT HANDICRAFTER



Style No. 480

These directions are for size 12. Changes for sizes 14 and 16 are in parentheses.

MATERIALS

BERNAT Nylo Germantown (2 oz. skeins) — 6(6-7)
1 pair straight knitting needles No. 10 OR ANY SIZE
NEEDLES WHICH WILL GIVE THE STITCH
GAUGE GIVEN BELOW
1 aluminum crochet hook No. 4/E
5 buttons

GAUGE: 4 sts = 1 inch 6 rows = 1 inch

BACK: Cast on 61(65-69) sts. Work even in seed st until piece measures 3 inches. On the next row inc 1 st each end of needle and repeat this inc every 1 inch 4 times more. Work even in seed st on 71(75-79) sts until piece measures 8(8-8½) inches. **SHAPE ARMHOLES:** At the beg of each of the next 2 rows bind off 5(6-6) sts. Dec 1 st each end of needle every other row 3 times. Work even on 55(57-61) sts until armholes measure 7½(7¾-8) inches. **SHAPE SHOULDERS:** At the beg of each of the next 4 rows bind off 6 sts. At the beg of each of the next 2 rows bind off 6(7-8) sts. Bind off remaining 19(19-21) sts.

LEFT FRONT: Cast on 39(41-43) sts. Work even in seed st until piece measures 3 inches. On the next row at arm edge inc 1 st and repeat this inc every 1 inch 4 times more. Work even in seed st on 44(46-48) sts until piece measures 8(8-8½) inches. **SHAPE ARMHOLE:** At arm edge bind off 5(6-6) sts. Dec 1 st at same edge every other row 3 times. Work even in seed st on 36(37-39) sts until armhole measures 5¾(6-6¼) inches. **SHAPE NECK:** At front edge bind off 12(12-13) sts once and 2 sts 3 times. Work even on 18(19-20) sts until armhole measures 7½(7¾-8) inches.

SHAPE SHOULDER: At arm edge bind off 6 sts twice and 6(7-8) sts once.

RIGHT FRONT: Work to correspond to left front, reversing all shaping and forming first buttonhole when piece measures ½ inch. **BUTTONHOLE:** Starting at front edge, work 2 sts, bind off the next 4 sts, work to end of row. On the next row cast on 4 sts over those bound off previous row. Make 4 more buttonholes, evenly spaced — the last one to be made ½ inch below start of neck shaping.

SLEEVES: Cast on 41(43-45) sts. Work even in seed st for 3 inches. P the next row to form hemline and continue in seed st until piece measures 6 inches. On the next row inc 1 st each end of needle and repeat this inc every 2 inches 4 times more. Work even on 51(53-55) sts until piece measures 16(16-16½) inches. **SHAPE CAP:** At the beg of each of the next 2 rows bind off 5(6-6) sts. Dec 1 st each end of needle every other row 5(6-7) times and every 4th row 4 times. At the beg of each of the next 6 rows bind off 2 sts. Bind off remaining sts.

COLLAR: Cast on 19(19-21) sts. Working in seed st, at the beg of each of the next 6 rows cast on 6 sts. Work even on 55(55-57) sts until piece measures 2½ inches. On the next row dec 1 st each end of needle and repeat this dec every row twice more. Bind off remaining 49(49-51) sts.

FINISHING: Sew underarm, shoulder and sleeve seams. Set in sleeves. Sew cast on edge of collar to neck edge to within 1 inch of each front edge. Work 1 row s c around collar, on fronts and around lower edge of jacket and cuffs. Turn up sleeves on hemline to form cuffs. Block. Finish buttonholes. Sew on buttons.

STYLE NO. 477 (Continued from page 29)

LEFT FRONT: SHAPE TAB: Cast on 3(3-5) sts. Row 1: Knit. Row 2: Work Row 1 of pattern st. Row 3: K, inc 1 st each end of needle. Row 4: Work Row 3 of pattern st. Repeat Rows 3 and 4 until there are 11(13-15) sts, ending with Row 4. At the beg of the next row cast on 14 sts, K to end of row. At the beg of the next row cast on 14 sts and K these 14 sts, work Row 1 of pattern st on remaining 25(27-29) sts. Work even in pattern st on 39(41-43) sts until piece measures 12(12-12½) inches above last group of cast on sts. **SHAPE ARMHOLE:** At arm edge bind off 5 sts. At same edge dec 1 st every other row 5 times. Work even on 29(31-33) sts until armhole measures 6(6¼-6½) inches. **SHAPE NECK:** At front edge bind off 3(4-5) sts once, 2 sts twice and dec 1 st every other row 3 times. Work even on 19(20-21) sts until armhole measures 8(8¼-8½) inches. **SHAPE SHOULDER:** At arm edge bind off 5 sts 3 times and 4(5-6) sts once.

RIGHT FRONT: Work to correspond to left front, reversing all shaping.

SLEEVES: SHAPE CUFF: Cast on 47(49-51) sts. K 1 row. Work in pattern st, dec 1 st each end of needle every 8th row twice, ending with a K row — 43(45-47) sts. K the next row to form hemline and to reverse pattern st. Then continue in pattern st, inc 1 st each end of needle every 2 inches 5 times. Work even on 53(55-57) sts until piece measures 12(12-12½) inches above hemline. **SHAPE CAP:** At the beg of each of the next 2 rows bind off 5 sts. Dec 1 st each end of needle every 4th row 12(13-14) times. At the beg of each of the next 6 rows bind off 2 sts. Bind off remaining sts.

FINISHING: Sew underarm, shoulder and sleeve seams. Set in sleeves. Block. Face jacket and cuffs with ribbon. Sew braid around all edges. Sew 1 button to each tab. Turn cuffs on hemline and tack in place.



Style No. 481

These directions are for size 12. Changes for sizes 14 and 16 are in parentheses.

MATERIALS

BERNAT Nylo Germantown (2 oz. skeins) — 6
1 pair straight knitting needles No. 10 OR ANY SIZE
NEEDLES WHICH WILL GIVE THE STITCH
GAUGE GIVEN BELOW
1 aluminum crochet hook No. 5/F
3 yds braid

GAUGE: 4 sts = 1 inch 6 rows = 1 inch

PATTERN STITCH: Multiple of 2 sts plus 1.

Row 1: K 1, * P 1, K 1, repeat from * across row.
Rows 2 and 4: Purl.
Row 3: P 1, * K 1, P 1, repeat from * across row.
Repeat these 4 rows for pattern stitch.

BACK: Cast on 53(57–61) sts. Work even in pattern st for 2 inches. Put a marker in work. On the next row inc 1 st each end of needle and repeat this inc every $\frac{3}{4}$ inch 8 times more. Work even on 71(75–79) sts until piece measures $9\frac{1}{2}$ ($9\frac{1}{2}$ –10) inches. **SHAPE ARMHOLES:** At the beg of each of the next 2 rows bind off 5(6–6) sts. Dec 1 st each end of needle every other row 3 times. Work even in pattern st on 55(57–61) sts until armholes measure $7\frac{1}{2}$ ($7\frac{3}{4}$ –8) inches. **SHAPE SHOULDERS:** At the beg of each of the next 2 rows bind off 6(7–8) sts. At the beg of each of the next 4 rows bind off 6 sts. Bind off remaining 19(19–21) sts.

LEFT FRONT: Cast on 27(29–31) sts. Work even in pattern st for 2 inches. At arm edge put a marker in work. On the next row at arm edge inc 1 st and repeat this inc every $\frac{3}{4}$ inch 8 times more. Work even on 36(38–40) sts until piece measures $9\frac{1}{2}$ ($9\frac{1}{2}$ –10) inches. **SHAPE ARMHOLE:** At arm edge bind off 5(6–6) sts. Dec 1 st at same edge every other row 3 times. Work even in pattern st on 28(29–31) sts

until armhole measures $5\frac{3}{4}$ (6 – $6\frac{1}{4}$) inches. **SHAPE NECK:** At front edge bind off 4(4–5) sts once and 2 sts 3 times. Work even on 18(19–20) sts until armhole measures $7\frac{1}{2}$ ($7\frac{3}{4}$ –8) inches. **SHAPE SHOULDER:** At arm edge bind off 6(7–8) sts once and 6 sts twice.

RIGHT FRONT: Work to correspond to left front, reversing all shaping.

SLEEVES: FIRST PIECE: Cast on 19(20–21) sts. Work even in pattern st for 2 inches, ending with a P row. Put these 19(20–21) sts on a holder. **SECOND PIECE:** Work to correspond to first piece. **JOIN SLEEVE PIECES:** Work in pattern st across 18(19–20) sts of second piece, inc 1 st in last st, work 19(20–21) sts of first piece to same needle. Continue in pattern st on 39(41–43) sts for 5 rows more. On the next row inc 1 st each end of needle and repeat this inc every $1\frac{1}{2}$ inches 5 times more. Work even in pattern st on 51(53–55) sts until piece measures 13(13– $13\frac{1}{2}$) inches. **SHAPE CAP:** At the beg of each of the next 2 rows bind off 5(6–6) sts. Dec 1 st each end of needle every other row 5(6–7) times and every 4th row 4 times. At the beg of each of the next 6 rows bind off 2 sts. Bind off remaining sts.

COLLAR: Cast on 53(53–55) sts. Work in pattern st for $1\frac{1}{2}$ inches, ending with a P row. P the next 2 rows to form hemline and continue in pattern st until piece measures 3 inches. Bind off.

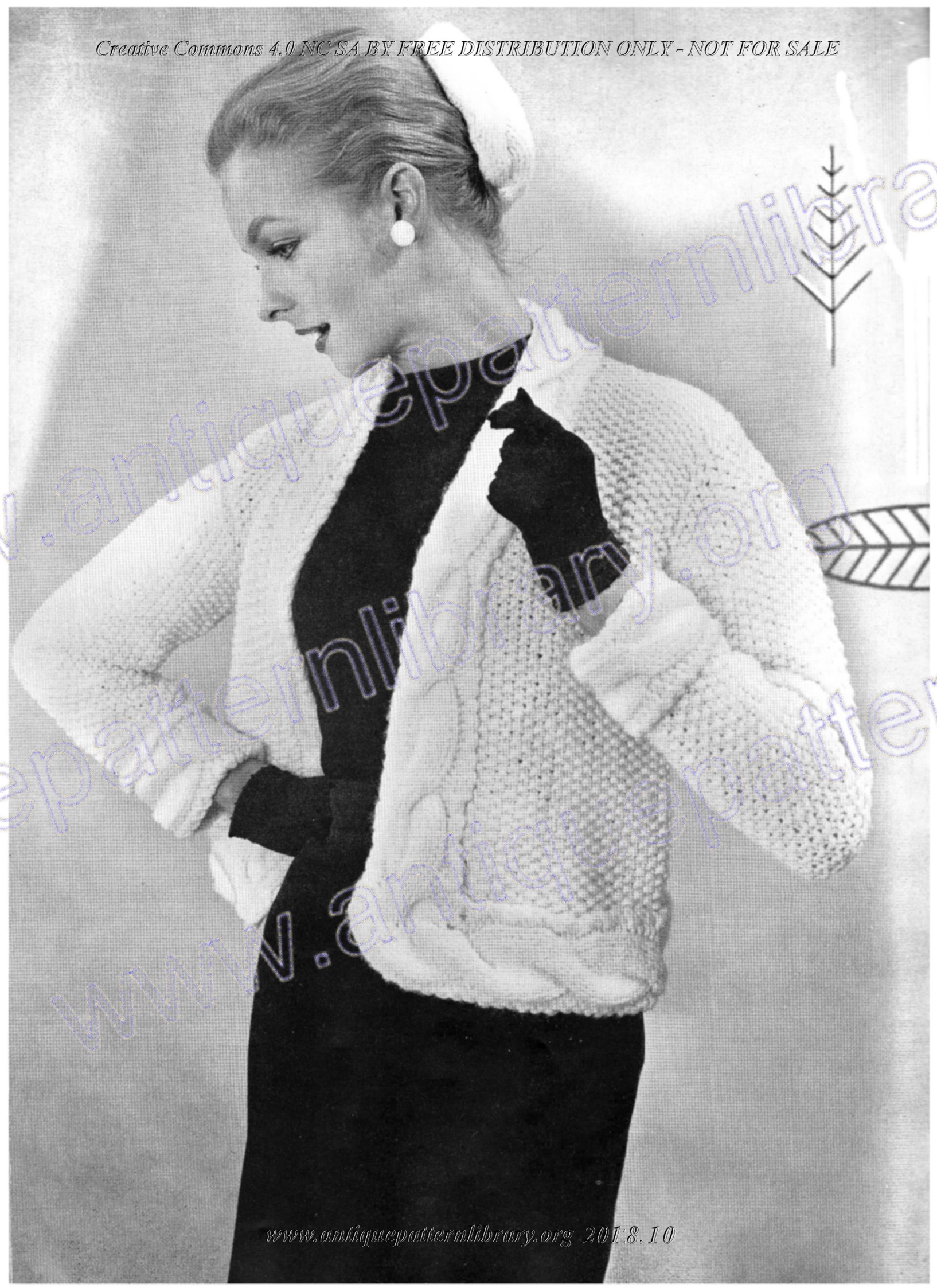
FINISHING: Sew underarm seams above markers. Sew shoulder and sleeve seams. Set in sleeves. Fold collar on hemline and sew to neck edge to within 1 inch of each front edge. Work 1 row s c around entire jacket and sleeve edges. Block. Sew on braid as shown in photograph.

Style No. 487 (Continued from page 25)

SLEEVES: Cast on 41 sts. Row 1: K 5, * P 1, K 5, repeat from * across row. Row 2: P 5, * K 1, P 5, repeat from * across row. Repeat these 2 rows for $1\frac{1}{2}$ inches. On the next row inc 1 st each end of needle and repeat this inc every $1\frac{1}{2}$ (1–1) inch 6 (8–9) times more, forming new patterns as sts are increased. Work even on 55 (59–61) sts until piece measures 13 (13– $13\frac{1}{2}$) inches. **SHAPE CAP:** At the beg of

each of the next 2 rows bind off 6 sts. Dec 1 st each end of needle every other row for $4\frac{1}{2}$ ($4\frac{3}{4}$ –5) inches. At the beg of each of the next 6 rows bind off 2 sts. Bind off remaining sts.

FINISHING: Sew underarm, shoulder and sleeve seams. Set in sleeves. Work 3 rows s c around entire jacket and on sleeves. Block. Sew appliques on each front as shown in photograph, if desired.



Style No. 474 Shown on Front Cover and at left

These directions are for size 12. Changes for sizes 14 and 16 are in parentheses.

MATERIALS

BERNAT Cuddlespun (2 oz. skeins) — 12(12-13)
1 pair straight knitting needles No. 10½ OR ANY SIZE
NEEDLES WHICH WILL GIVE THE STITCH
GAUGE GIVEN BELOW
1 d p needle or cable holder

GAUGE: 4 sts = 1 inch 6 rows = 1 inch in seed stitch

JACKET

BACK: Cast on 75(79-83) sts. Work even in seed st until piece measures 10(10-10½) inches. **SHAPE ARMHOLES:** At the beg of each of the next 2 rows bind off 6(6-7) sts. Dec 1 st each end of needle every other row 5(6-6) times. Work even on 53(55-57) sts until armholes measure 8(8¼-8½) inches. **SHAPE NECK AND SHOULDERS:** Work 15 (16-17) sts, join another ball of yarn and bind off centre 23 sts, work last 15(16-17) sts. Working on both sides at once, at each neck edge dec 1 st every other row twice and at each arm edge bind off 5 sts 1(2-3) times and 4 sts 2(1-0) times.

LEFT FRONT: Cast on 29(31-33) sts. Work even in seed st until piece measures 10(10-10½) inches. **SHAPE ARM-HOLE AND NECK:** At arm edge bind off 5 sts, work to last 2 sts, work 2 sts tog (neck dec). At arm edge dec 1 st every other row 4(5-6) times and at neck edge dec 1 st every 6th row 6 times more. Work even on 13(14-15) sts until armhole measures 8(8¼-8½) inches. **SHAPE SHOULDER:** At arm edge bind off 5 sts 1(2-3) times and 4 sts 2(1-0) times.

RIGHT FRONT: Work to correspond to left front, reversing all shaping.

SLEEVES: Cast on 35(37-39) sts. Work in seed st, inc 1 st at each end of needle every 1½ inches 8 times. Work even on 51(53-55) sts until piece measures 15(15-15½) inches. **SHAPE CAP:** At the beg of each of the next 2 rows bind off 6 sts. Dec 1 st each end of needle every other row 7(8-9) times and every 4th row 4 times. At the beg of each of the next 6 rows b' sts. Bind off remaining sts.

CABLE PATTE. **JH:** Worked on 21 sts.
Rows 1, 3 and 5: P 6 (facing), K the next 2 sts tog but do not take off left-hand needle, K the first st on left-hand needle once more and take both sts off left-hand needle

(cross st), P 1, K 8, P 1, work a cross st on next 2 sts, P 1. Row 2 and all even rows: K 1, P 2, K 1, P 8, K 1, P 2, K 6. Row 7: P 6, work a cross st, P 1, sl next 4 sts onto d p needle and hold in back of work, K next 4 sts, K 4 sts from d p needle (cable twist), P 1, work a cross st, P 1. Rows 9, 11 and 13: Repeat Row 1. Row 14: Repeat Row 2. Repeat these 14 rows for cable pattern stitch.

BORDER: Cast on 21 sts. Work even in cable pattern st until piece is long enough to fit around lower, front and neck edges, ending with Row 6. Break off yarn, leaving a 12 inch end. Sl sts on a holder.

CUFFS: Cast on 21 sts. Work even in cable pattern st until piece is long enough to fit around lower edge of sleeves, ending with Row 6. Break off yarn, leaving a 12 inch end. Sl sts on a holder.

FINISHING: Sew underarm, shoulder and sleeve seams. Set in sleeves. Starting at right underarm seam, with right side of jacket and cable facing you, sew border to edges, easing in extra fullness at corners. Weave ends tog st underarm seam. Fold under facing and hem to wrong side. Sew cuffs to sleeve edges in same manner. Steam seams.

CHIGNON HAT

Cast on 56 sts. Work even in stockinette st until piece measures 2 inches. **CROWN:** Work 5 rows in seed st. On the next row * work 14 sts in seed st, put a marker on needle, repeat from * twice more, work last 14 sts. Dec Row: * Work 2 sts tog, work in seed st to 2 sts before next marker, work 2 sts tog, repeat from * ending work last 2 sts tog — 8 sts dec. Repeat this dec row every other row until 8 sts remain. Break off yarn, leaving a 12 inch end. Draw through sts on needle and pull up tightly. Sew side seam.

CABLE EDGE: Cast on 12 sts. Rows 1, 3 and 5: P 2, K 8, P 2. Rows 2, 4 and 6: K 2, P 8, K 2. Row 7: P 2, work cable twist on next 8 sts, P 2. Continuing in pattern st as established, twist cable every 14th row until piece is long enough to fit around crown, ending with 6th row above last cable twist. Weave ends tog.

FINISHING: Block crown and cable band. Turn under stockinette band and hem to inside of crown for facing. Turn under the 2 P sts each side of cable and sew cable to hat.



Style No. 479 Shown on Back Cover and at left

These directions are for size 12. Changes for sizes 14 and 16 are in parentheses.

MATERIALS

BERNAT Nylo Germantown (2 oz. skeins) — 7
1 pair each straight knitting needles Nos. 4 and 8 OR ANY
SIZE NEEDLES WHICH WILL GIVE THE STITCH
GAUGE GIVEN BELOW
1 aluminum crochet hook No. 4/E
7 buttons

GAUGE: 5 sts = 1 inch 7 rows = 1 inch

SHELL PATTERN STITCH: Multiple of 14 sts plus 7. It takes 2 rows to complete a shell pattern.

Row 1: K to marker, ** insert needle in 4th st on left hand needle 4 rows below, draw up a long loop, K the next st, * insert needle in same st, draw up a long loop, K the next st, repeat from * 5 times more (1 shell started), K 7, repeat from ** ending start 1 shell, K to end of row.

Row 2: P to marker, * K tog the next st and 1 long loop, repeat from * 6 times more (1 shell completed), P 7, repeat from * ending complete 1 shell, P to end of row.

Rows 3 through 16: Work in stockinette st.

Row 17: K to 7 sts before first marker, repeat from ** of Row 1 to 7 sts beyond second marker, K to end of row.

Row 18: P to 7 sts before first marker, repeat from * of Row 2 to 7 sts beyond second marker, P to end of row.

Rows 19 through 32: Work in stockinette st.

Repeat these 32 rows for shell pattern stitch.

BACK: Using No. 4 needles, cast on 68(74–78) sts. K 1, P 1 in ribbing for 2½ inches. Change to No. 8 needles and P the next row, inc at even intervals to 75(81–85) sts. On the next row K 13(16–18); put a marker on needle; K the next 49 sts; put a marker on needle; K 13(16–18). Continue in stockinette st for 7 rows more. Then work in pattern st until piece measures 3½(3½–4) inches, ending with a wrong side row. On the next row inc 1 st each end of needle and repeat this inc every 1 inch 4 times more, ending with a wrong side row and forming new patterns as sts are increased — 85(91–95) sts. **SHAPE DOLMAN SLEEVES:** On the next row inc 1 st each end of needle and repeat this inc every other row twice more. At the beg of each of the next 10 rows cast on 8 sts. Work even in pattern st on 171(177–181) sts until sleeves measure 4¾(5–5¼) inches above last group of cast on sts. **SHAPE SHOULDERS:** At the beg of each of the next 2 rows bind off 4(7–8) sts. At the beg of each of the next 28 rows bind off 5 sts. Bind off remaining 23(23–25) sts.

LEFT FRONT: Using No. 4 needles, cast on 41(43–45) sts. Row 1: K 1, P 1 in ribbing for 32(34–36) sts, work last 9 sts in seed st (front border). Row 2: Work 9 sts in seed st, K 1, P 1 in ribbing to end of row. Repeat this 2 rows for 2½ inches, ending with Row 1. On the next row work 9 sts in seed st and put these 9 sts just worked on a holder to be worked later for front border; P remaining sts, inc at even intervals to 37(40–42) sts. Change to No. 8 needles. On the next row K 13(16–18); put a marker on needle; K 21; put a marker on needle; K 3. Continue in stockinette st for 7 rows more. Work even in pattern st until piece measures 3½(3½–4) inches, ending with a wrong side row. On the next row at arm edge inc 1 st and repeat this inc every 1 inch 4 times more, forming new patterns as sts are increased and ending with a wrong side row — 42(45–47) sts. **SHAPE DOLMAN SLEEVE:** At arm edge inc 1 st and repeat this inc every other row twice more. At arm edge cast on 8 sts 5 times. Work even on 85(88–90) sts until sleeve measures 4¾(5–5¼) inches above last group of cast on sts. **SHAPE SHOULDER:** At arm edge bind off 4(7–8) sts once and 5 sts 8 times. **SHAPE NECK:** Continuing to bind off 5 sts at arm edge 6 times more, at front edge bind off 5(5–6) sts once and 2 sts 3 times. **LEFT FRONT BORDER:** Sl 9 sts from holder onto No. 4 needles. Continue in seed st until piece is same length as front to start of neck shaping. Bind off.

RIGHT FRONT AND RIGHT FRONT BORDER: Work to correspond to left front and left front border, reversing placing of pattern st and all shaping and forming first buttonhole, when piece measures 1 inch. **BUTTONHOLE:** Starting at front edge, work 3 sts, bind off the next 3 sts, work to end of row. On the next row cast on 3 sts over those bound off previous row. Make 6 more buttonholes, evenly spaced — the last one to be made ½ inch below start of neck shaping.

COLLAR: Using No. 4 needles, cast on 65(67–71) sts. Work even in seed st for 2 inches. Bind off.

FINISHING: Sew shoulder seams. **CUFFS:** Using No. 4 needles, with right side facing you pick up 46(48–50) sts across sleeve edge. K 1, P 1 in ribbing for 2 inches. Bind off in ribbing. Sew underarm seams. Sew front borders in place. Sew collar on neck edge to within ¾ inch of each front edge. Fold collar in half and hem to wrong side. With right side facing you work 1 row sc on each front edge. Block. Sew on buttons. Finish buttonholes.