

## Antique Pattern Library

For more information, please see our website at:

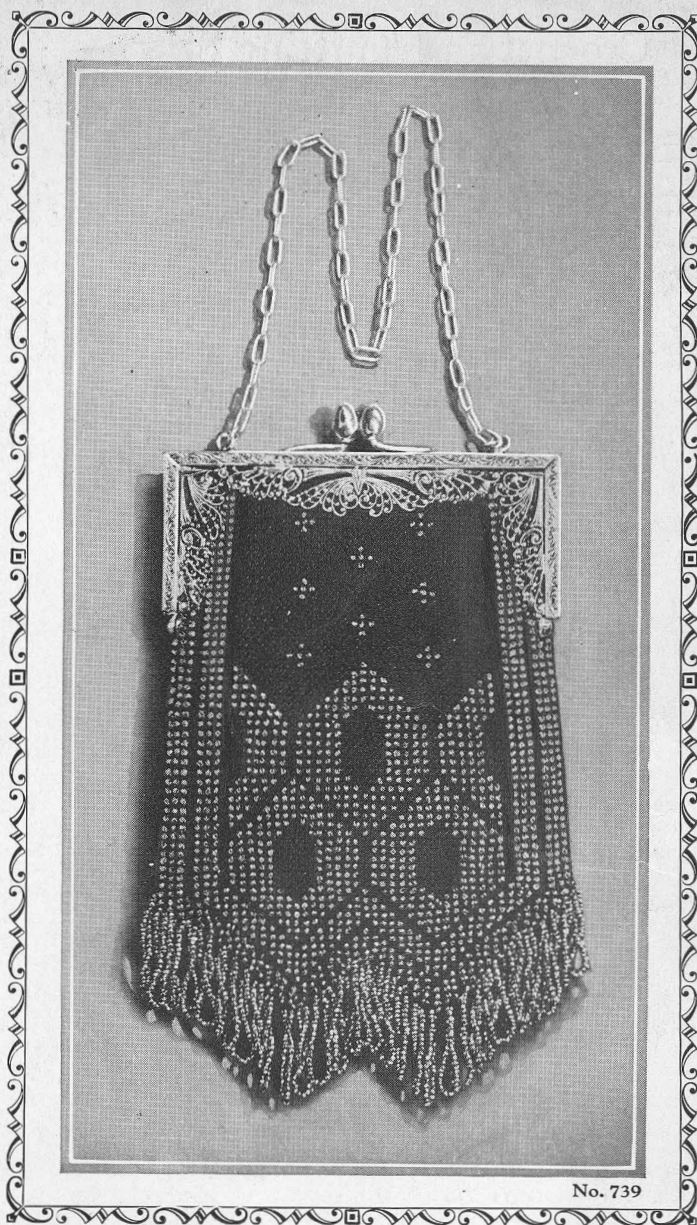
<http://www.antiquepatternlibrary.org>

This is a scan of an antique book that is, to the best of our knowledge, in the public domain. The scan itself has been edited for readability, and is licensed under the **Creative Commons Attribution-NonCommercial-ShareAlike License**. To view a copy of this license, visit <http://creativecommons.org/licenses/by-nc-sa/2.5/> or send a letter to Creative Commons, 559 Nathan Abbott Way, Stanford, California 94305, USA.

**You may share copies or printouts of this scan freely. You may not sell copies or printouts.**

Antique Pattern Library is a project of New Media Arts, Inc. <http://www.newmediaarts.org>, a nonprofit organization tax exempt under IRC 501(c)(3). Donations may be tax deductible, depending on your tax status and tax jurisdiction.

Donated by



1224M

Price  
10¢

**B A G S**  
*That are Novel and Modish*  
*in*  
**HEMINWAY**  
**SILKS**

BAG BOOK No. 4

MADE IN U. S. A.

# Crochet and Knitting Stitches

## Abbreviations

S.—Silk.  
Sk.—Skip.  
Sp.—Space.  
L.—Loop.  
M.—Mesh.  
R.—Ring.  
P.—Purl.

P.—Picot.  
R.—Ridge.  
Kn.—Knit.  
Ch.—Chain.  
St.—Stitch.  
Inc.—Increase.  
Dec.—Decrease.

Sl. St.—Slip Stitch.  
S. C.—Single Crochet.  
D. C.—Double Crochet.  
H. D. C.—Half Double Crochet.  
T. C. or Tr. C.—Treble Crochet.  
D. Tr. C.—Double Treble Crochet.  
Tr. Tr. C.—Triple Treble Crochet.

\*—Repetition.

**Chain Stitch**—To begin the ch., form the first loop and insert the hook, then \* throw the thread over the hook, and draw a loop through the loop on the hook, thus forming 1 ch. st.; repeat from \* as often as desired.

**Slip Stitch**—Begin with a length of ch.

Skip 1 ch., \* insert the hook into the next ch., throw the thread over the hook, and draw a loop through the st. and the loop on the hook, repeat from \* to end of row. Sl. st. is mostly \* used to close a row or round, or to join 2 motifs together.

**Single Crochet**—Make a ch. for the length required.

Skip 1 ch., \* insert the hook into the next ch., throw the thread over, and draw a loop through the st., throw thread over, and draw through the 2 loops on the hook; repeat from \* to the end of row.

Single crochet stitches worked back and forth taken upon the back thread only form a rib and is often called slipper st.

**Half Double Crochet**—Make a ch. for the desired length.

1st Row—Sk. 2 ch., \* throw the thread over and insert the hook in to the next ch., throw the thread over and draw a loop through, throw the thread over, and draw through the 3 loops on the hook; repeat from \* to end of row.

Actual size of needles and books used in making these bags may be found on last page

## Simplifying the Manner of Crocheting and Knitting with Beads

**Stringing of Beads:** Loosen 1 string of a bunch of beads, if silk is heavy take a pair of scissors and file down for 2 or 3 inches until a finer thread is secured, then holding the silk thread between thumb and finger of left hand lay bead, thread over and fold back silk in loop under thumb, tie knot in cotton thread carefully, holding all ends back, push beads on to silk thread.

**Crocheting with Beads:** Thread 1 bunch of heads on to spool of silk. If beads are not used in very

beginning of bag, push back on unwinding silk thread until needed. Insert needle in stitch, push head close to needle, pull loop through, silk over needle, pull through both loops on needle, continue around. All beaded bags are worked from the inside, this throws the beads to front or right side of bag.

**Knitting with Beads:** Thread one bunch of beads on to spool of silk. Insert needle in st., push bead toward needle, complete or knit the st.

## To Mount Bags

**To prepare bags to mount where beads are used:** On pressing board covered with soft flannel stretch and tack down with pins around entire edge, using care to keep edges straight. With medium iron press over the entire bag, brush lightly and evenly with white paste, let dry thoroughly, this gives body and correct trim to bag.

**To Mount Bags:** Lay bag on taffeta (which makes a better lining than softer silk) and cut 1½

inches larger than bag. A Shirred pocket cut 3½ x 5½ inches is sewed to lining on one side about 2 inches from top of bag (elastic is run through casing of pocket); size when finished, 3 x 3 inches. French seam the lining, slip in bag and gather to size of frame. Slip plain rows of knitting in under bag frame if possible so that frame meets beads, needle out through opening, needle back through same hole, finish on inside with a fancy braid.

## Washing Directions

Dip the article in tepid or cold water and let it lie a few moments. Press out water and place again in very warm Ivory soap suds, pressing between hands to clean. It may be necessary to rub

gently to remove deeper stains. Rinse twice in tepid or cold water; lay in folds of Turkish towel until moisture is absorbed and nearly dry; if necessary, press with medium hot iron between dry towels.

HEMINWAY  
SILKS

# BAGS

CROCHETED & KNITTED



*Designed Exclusively for*

THE H. K. H. SILK COMPANY  
OF NEW YORK, INCORPORATED

by

*Jane C. Gilbert*

in

**HEMINWAY  
SILKS**

### *The Joy of Creating!*

To watch a few strands of lustrous silk thread grow beneath your skilful fingers into a beautiful, useful bag — to know that you *created* it — this is the real pleasure aside from the subsequent pride of ownership that rewards those who “make up” these lovely bags.

ROSE-MARIE No. 739

*Illustrated on Front Cover*

*Two Faced—but altogether desirable for day wear.*

Made with  
**HEMINWAY  
SILKS**

**Materials:** Heminway 25 yd. Bead Twist, No. 2300 Peacock, 4 spools; 4 Bunches Steel Beads, No. 9; 2 Steel Knitting Needles, No. 16; 4 in. Bag Frame; 1/8 yd. of Silk Lining.

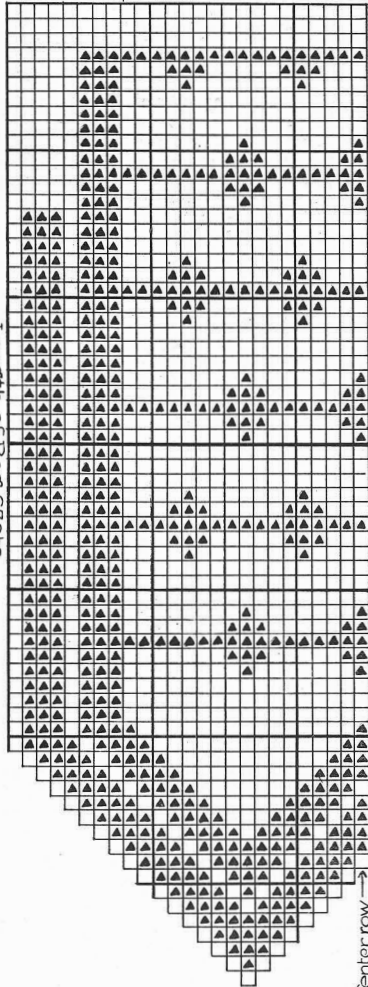
String two Bchs. of Beads (B.) on Silk (S.). Cast on 49 sts. Start front design first.

**1st row.**—Kn. 1st row without B. **2nd row.**—Kn. 5 sts. S. (without B.). Kn. 3 sts. with B., 33 sts. S., 3 st. B., 5 sts. S. **3rd row.**—Kn. plain without B. (There is always a plain row between B. rows. This will not be mentioned again and does not appear on design.) Continue according to design. Dec. as in design by

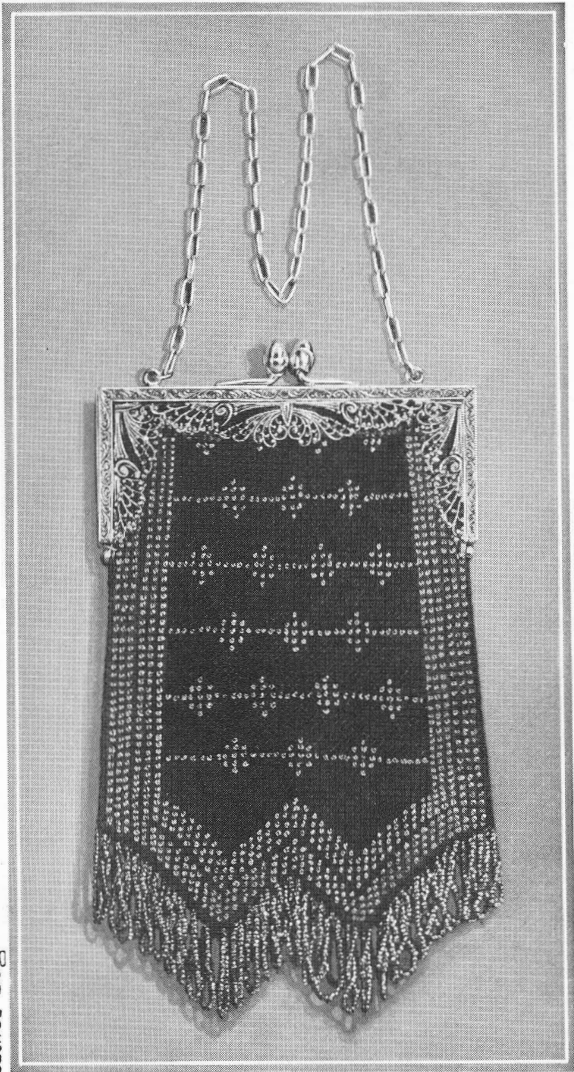
knitting 2 sts. tog. at both ends of row. This dec. always comes on plain row. When dividing point is reached place 1/2 of sts. on extra needle, with sts. still on needle, finish point as in design, break silk and attach to other point and work as before. Work the back design in same manner as front (1/2 of back design shown), leaving 1 3/4 in. open on sides for mounting. Sew sides and bottom neatly together.

**Fringe:** Attach silk on 1st dec. of lower left corner, thread 44 B., needle through bag 1/8 in. to right, continue with B. loops around points to opposite side. Mount as directions given on inside of front cover.

No. 739 Rose-Marie (1/2 back of bag)  
Start at top - Cast on 49 sts

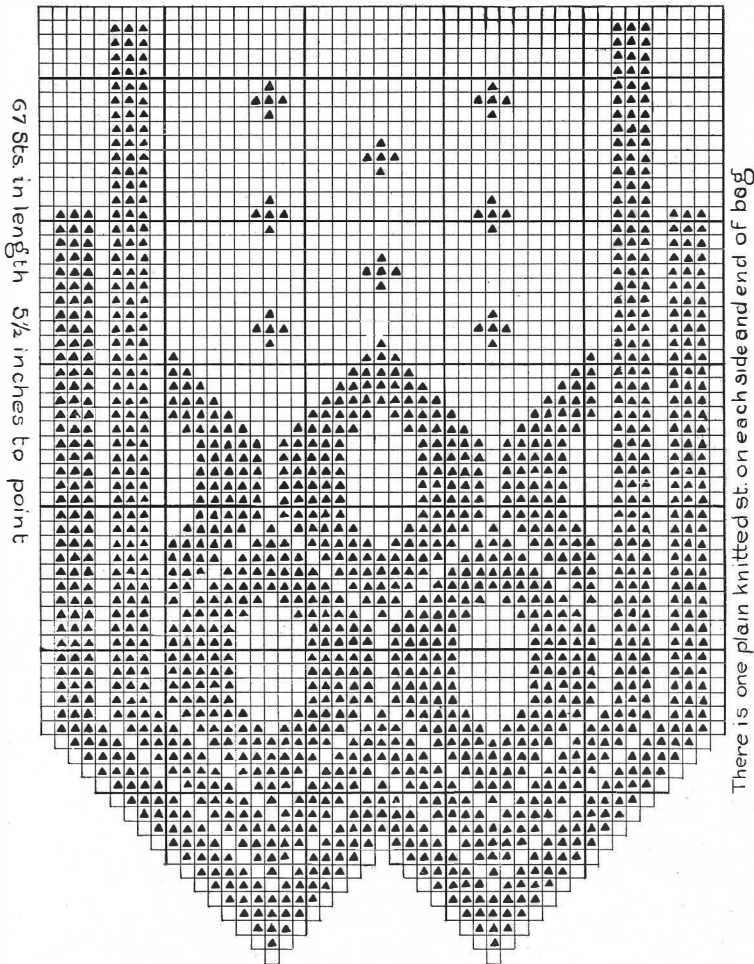


There is one plain knitted stitch on sides and end



*Back View of the Rose-Marie No. 739*

No. 739 The Rose-Marie (Front of bag)  
Start at top of bag—each side is done separately  
Caste on 40 sts. 4¼ inches in width



The design is done in steel beads.

## TALLEA No. 736

*Cherry Red Glowing Neath the Opalescence of Crystal Beads*

Made with

HEMINWAY  
SILKS

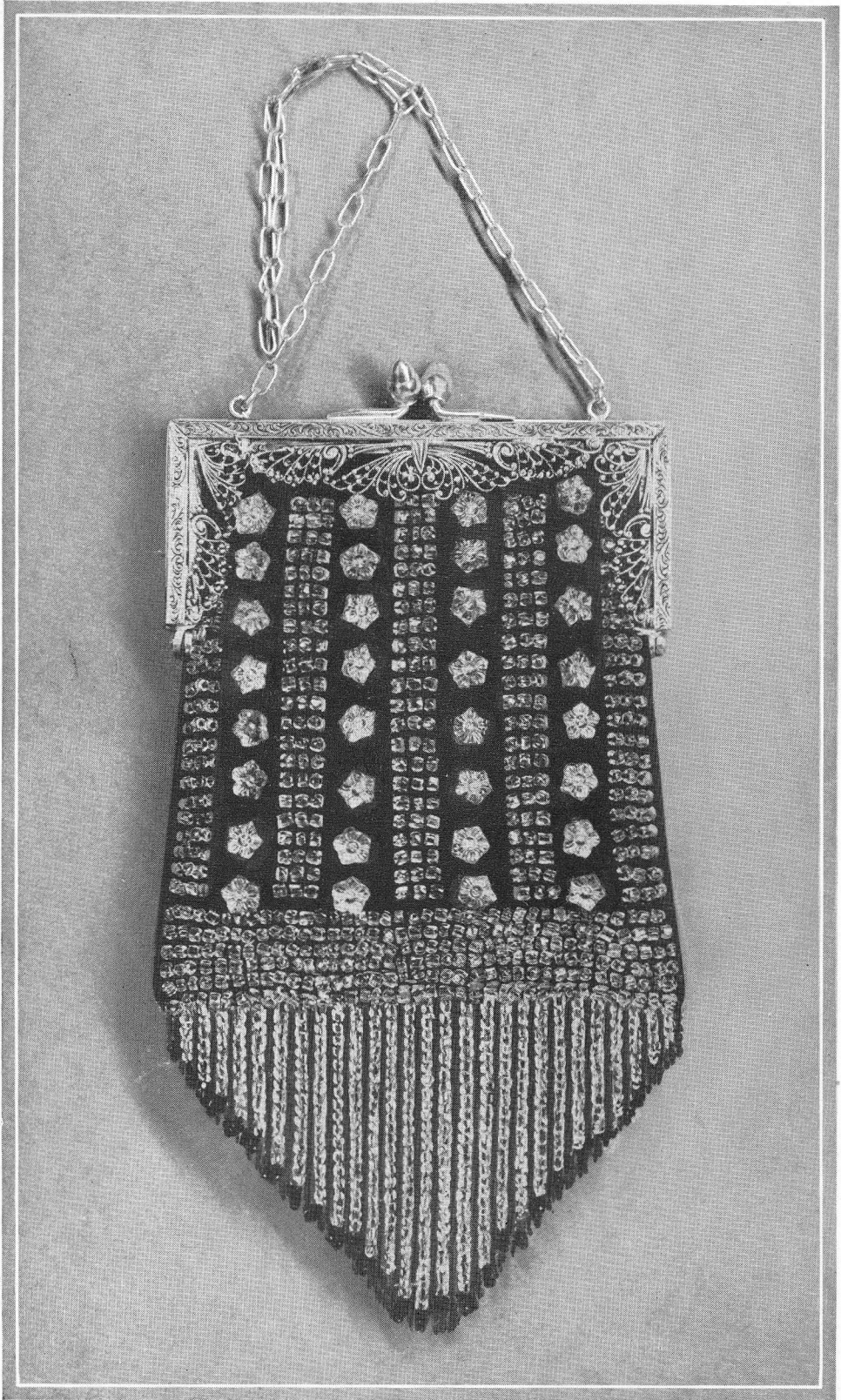
**Materials:** Heminway 25 yd. Bead Twist, No. 3241 Scarlet, 4 spools; 64 Crystal Forget-me-not. 2 Bunches Crystal Beads, size 6/0; 1 Bunch Crystal Red Beads, No. 8 or 9. (4 in. Silver Filigree Bag Frame.) Lining (9 in. x 5 in.).

**String Beads (B.)** for ½ Bag as follows: 234 Crystal (C.)—Forget-me-nots (F.). \* 3 C., 1 F., 3 C., 1 F., 3 C., 1 F., 3 C., 1 F., 33 C. \* Rep. \* to \* 4 times more. At end of 4th Rep., string 18 C., \* 1 F., 3 C., 1 F., 3 C., 1 F., 3 C., 1 F., 18 C. \* Rep. \* to \* twice more. Cast on 45 Sts. Knit 9 Rows plain.

**1st Row Patt.**—\* Knit 7 Sts. Silk (S.)

1 F. (Knit as follows: insert needle in st., push F. toward needle, silk over, complete or knit st. very tightly). Kn. 3 sts. S., 3 C., 3 S., 1 F., 3 S., 3 C., 3 S., 1 F., 3 S., 3 C., 3 S., 1 F., 7 S. **2nd, 3rd, 4th rows.**—Knit Plain Silk. **5th and 9th rows.**—Kn. 11 sts. S., 3 C., 7 S., 3 C., 7 S., 3 C., 11 sts. S. **6th, 7th, 8th, 10th, 11th, 12th rows.**—Kn. S. Rep. from Row 1 to 13 twice more. **37th row.**—Kn. 1 St. S., 3 C., 3 S., 1 F., 3 S., 3 C., 3 S., 1 F., 3 S., 3 C., 3 S., 1 F., 3 S., 3 C., 3 S., 1 F., 3 S., 1 S. **38th, 39th, 40th rows.**—Kn. S. **41st and 45th rows.**—Kn. 1 st. S., 3 C., 7 S., 3 C., 7 S., 3 C., 7 S., 3 C., 7 S., 3 C., 1 S. **42nd,**

(Concluded on page 8)



*The TALLEA No. 736*  
(See page 3 for descriptive matter)

## The LESTRA No. 737

*A small Pouch Bag whose background is a lovely shade of deep Orange-Silk. Design in Bronze Beads. A center row of Rhinestones lends brilliance to sides of bag.*

Made with  
**HEMINWAY  
SILKS**

**Materials:** Heminway Purse Twist, No. 2306 Mah-Jong, 1 Spool; Heminway 25 yd. Bead Twist, 2 spools. 20 Rhinestones, Size 18; 5 Bunches Bronze Iridescent Beads; Steel Crochet Needle, No. 11; Beads (B.), Silk (S.).

**String** 2 Bchs. B. on spool. Start at bottom crocheting **around**, ch. 41 sts., turn.

**1st row.**—1 s. c. in 2nd st. from needle, s. c. in each st. of row (40 s. c.), s. c. on

opposite side of ch., 40 s. c. **2nd row.**—40 s. c. with B. on each side of Bag. **3rd row.**—3 s. c. B. in 1st st., 38 s. c. B., 3 s. c. in last st. of front. Rep. for opposite side always. **4th and 5th rows.**—Inc. 3 st. in 1st and last s. c. of each side. **6th and 7th rows.**—Inc. 1 st. in 1st and last s. c. of each side, 2 rows s. c. without B. Follow diagram (Page 7), placing a B. in each s. c. st. of **design**, background plain s. c.

(Concluded on page 7)



The LESTRA No. 737



**The NICOLA No. 738**

*Russian Art Novelty Bag.*

Made with

**HEMINWAY  
SILKS**

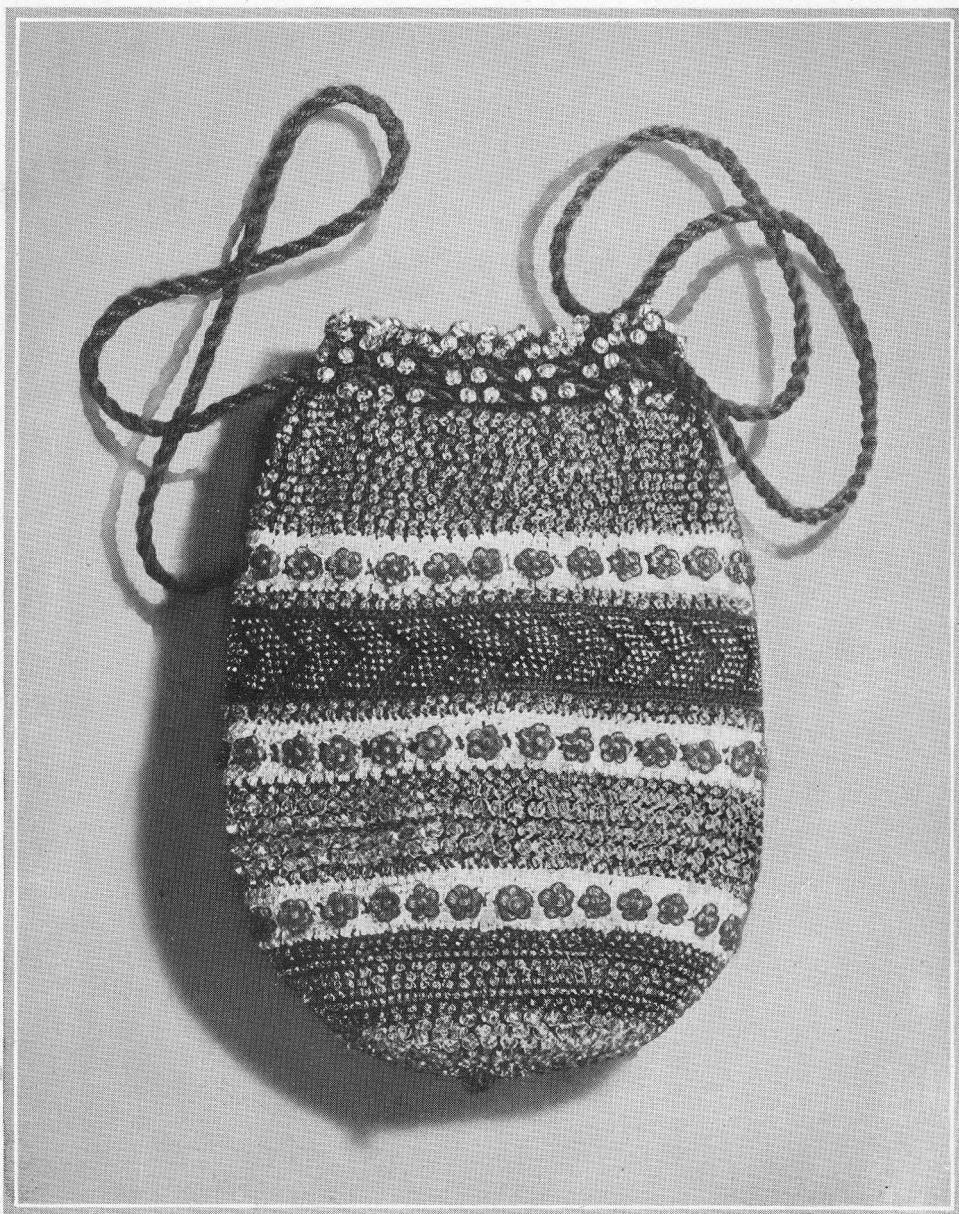
**Materials:** Heminway 25 yd. Bead Twist, No. 2306 Mah-Jong, 7 Spools; No. 4 Cream White, 1 Spool. Large Crystal Beads, size 2/0, 7 strings; Crystal Beads No. 8, 3 bunches; Steel Beads No. 9, 2 bunches; Flower Beads, Daisy (Orange), 7 dozen; 1 Steel Crochet Needle No. 11.

String on Mah-Jong silk beads as fol-

lows: Steel 330, Small Crystal 225, Steel 252, Large Crystal 126, Small Crystal 209, (C.) Steel 46.

**Notes:** 2 B. on every d. c.; 3 B., on every tr. c. Always have 1 d. c. silk bet. every d. c. with Bead (B.) except if otherwise mentioned. Always join row with sl. st. Ch. 3 or 4 at beginning of row

*(Continued on page 7)*



*The NICOLA No. 738*

**The NICOLA No. 738**

*(Continued from page 6)*

takes the place of 1 d. c. or 1 tr. c., ch. 6, join in Ring (R.). Length 7 in., widest part 5 in.

**1st row.**—Steel B.; ch. 3, 17 d. c. in R., join (18 B.). **2nd row.**—Ch. 3, \* 2 d. c. in next st. 1 d. c. in next \* Rep. from \* to \* around always. **3rd row.**—(Small Crystal) ch. 4, 1 tr. c. in 1st st.; \* 2 tr. c. in every st. \* (81 B.). **4th row.**—Ch. 4, \* 2 tr. cr. in next st., 1 tr. cr. in next st. \* Rep. **5th row.**—(Large C. B.) Ch. 4, 1

tr. c. in every st. **6th row.**—(Steel B.) Ch. 3, \* 2 d. c. in next st., 1 d. c. in the next st. \* Rep. **7th row.**—S. C. around; one B. to every st. **8th row.**—(Small C.) Ch. 4, 1 tr. c. in each of the next 3 sts., \* 2 tr. c. in the next st., 1 tr. c. in each of the next 4 sts. \* Rep. **9th row.**—(Steel B.) S. c. around, 1 B. in every st. **10th row.**—Ch. 3, 1 d. c. in each of the next 3 sts., \* 2 d. c. in the next st. 1 d. c. in each of next 4 sts., \* Rep., break S. String on

*(Concluded on page 8)*

**The LESTRA No. 737**

*(Concluded from page 5)*

**Loops at Top of Bag**

**\*\*1st row**—Start on 2nd s. c., 6 s. c. (working tightly), turn 1 s. c. Silk (S.), 4 s. c. B. in next 4 sts., 1 s. c. S., turn. **2nd row.**—6 s. c. S., turn, rep. 1st and 2nd rows 8 times more, break silk, leaving 6 in. S., sew to bag \*\*, rep. \*\* to \*\*, 4 times more with 6 s. c. S. between; rep. on 2nd side of bag (10 L. in all).

**Tubular Cords, Working Tightly**

Ch. 4, join in ring, ch. 3, 3 d. c. on next 3 ch., working round and round, d. c. on

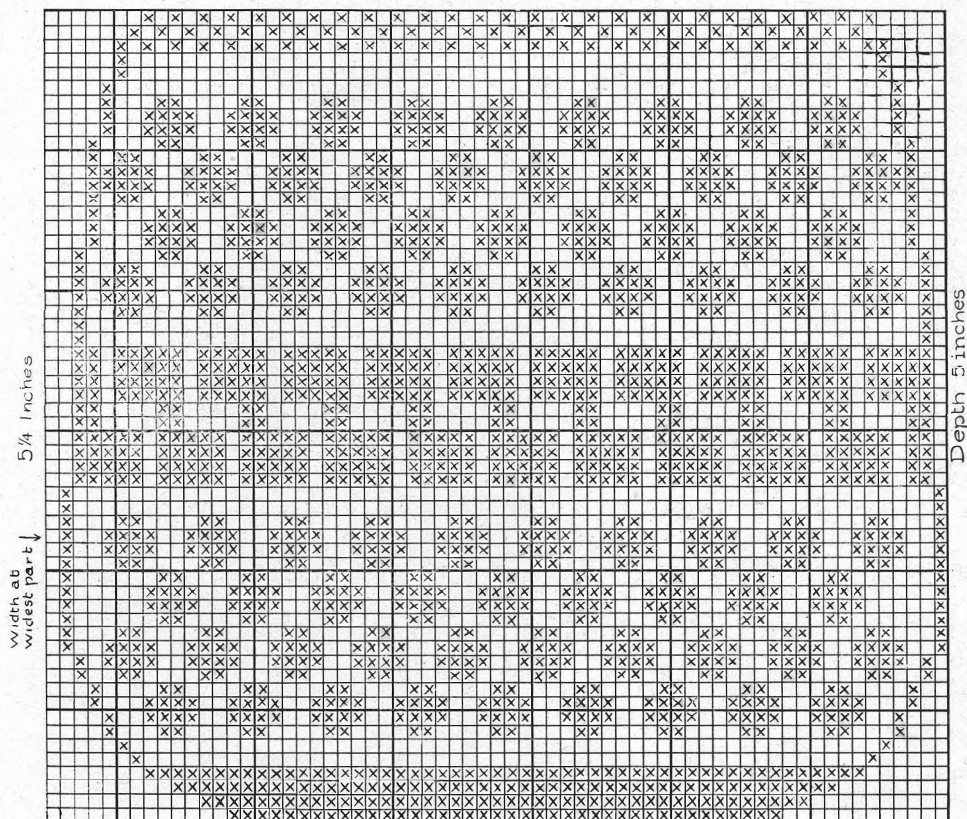
d. c. for 20 in. Make a 2nd cord, draw through loops from opposite sides, close neatly.

**Fringe Loops**

Attach silk on 14th row of left side, thread B. loop 2 in. long, fasten 1/2 in. to right; needle up through bag 1/4 in. above, thread another 2 in. L., fasten 1/2 in. below, continue around with loops 1 1/4 in. long, keeping all L. on even line. Sew Rhinestones at center as shown in illustration.

**Lestra No 737**

54 Sts across top Width 4 1/4 inches



Begin at bottom - 40 sts across - Width 3 1/4 In.

The NICOLA No. 738

(Concluded from page 7)

White Silk Small C. B. 178, Daisy (D.) 30, Small C. B. 178, join white silk. **11th row.**—(Small C.) Ch. 3, 1 d. c. in every st. **12th row.**—(Daisy B.) Place D. where mentioned and work it as follows: Silk over (S. O.), insert needle in st., S. O. draw a Loop (L.) through, push D. toward needle, S. O., draw through the 2 L. on needle, ch. 5, \* sk. 1 st., 1 tr. c. in the next st., ch. 1, sk. 1 st., 1 tr. c. in the next st., 1 d. c. with D. in next st., 1 tr. c. in next st., ch. 1 \* Rep., end row with Daisy. (30 Daisy, 1 D. to every 4th st.) In next row when working st. near flower st. of previous row, insert needle through st. to be worked and L. of flower st.; this fastens flower firmly. **13th row.**—(Small C.) Ch. 3, 1 d. c. in every st., break S. On Mah-Jong silk string 178 beads each as follows: Small C., Large C.; Small C.; Large C.; Small C.; join Mah-Jong silk. **14th to 19th rows.**—(Small C.) Ch. 3, 1 d. c. in every st., break S. On White silk string Small C. 178; D. 30; Small C. 178; join White. **19th row.**—(Small C.) Ch. 3, 1 d. c. in every st. **20th row.**—Same as row 12. **21st row.**—Same as row 15. Break S. On Mah-Jong silk string Small C. 164. Steel 9 strings, Small C. 178. **22nd row.**—(Small C.) Ch. 3, 1 d. c. in every st. **23rd row.**—(Without B.)

1 d. c. in every st. Dec. 1 st. at center and end of row. **24th to 33rd rows.**—Follow design with Steel B. **33rd row.**—(Without B.) Ch. 3, 1 d. c. in every st. Dec. every 16th st. by working 16th and 17th sts. tog. **34th row.**—(Small C.) Ch. 3, 1 d. c. in every st., break S., string on White S.: Small C. 162; D. 27; Small C. 162; join silk. **35th row.**—(Small C.) Ch. 3, 1 d. c. in every st. **36th row.**—(Daisy B.) Same as row 12. **37th row.**—(Small C.) Same as row 35. Break S., on Mah-Jong string Large C. 196; Small C. 1098. **38th row.**—(Small C.) Tr. cr. around, dec. every 16th st. **39th row.**—Ch. 4, 1 tr. c. in every st. **40th row.**—Tr. c., dec. every 16th st. **41st row.**—Tr. c., dec. every 12th st. (dec. 12th and 13th sts. tog.). **42nd row.**—Ch. 4, 1 tr. c. every st.

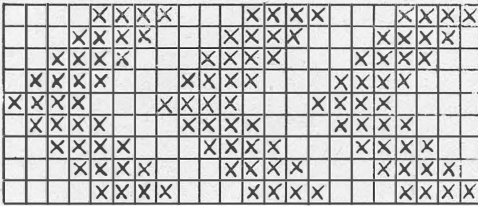
**Beading.**—**1st row.**—Without B., ch. 4, 1 tr. c. in each of next 2 sts. \* ch. 2, sk. 2 sts. (Large C.). 1 tr. c. having 1 B. in center of tr. c.; 1 tr. c. without B.; 1 tr. c. with B.; ch. 2; sk. 2 sts., 1 tr. c. without B. in next 3 sts., \* Rep. join row. **2nd row.**—Ch. 6, \* sk. 3 tr. c. of row below and into the ch. 2, work 1 tr. c. with 1 B.; 1 tr. c. S, 1 tr. with 1 B., ch. 2, sk. 3 tr. c. of row below and into the ch. 2 work 3 tr. c. S. Ch. 2 \* Rep., join.

**Edging:** Ch. 3, \* 1 d. c. (With 1 B. at top of d. c.) into the ch. 2 of previous row, 1 d. c. S. in same Loop; ch. 1 S. Ch. 1 B.; Ch. 1 S.; 1 d. c. in same L.; 1 d. c. (with 1 B. at top of D. C.) sk. the 3 tr. c. of previous row and work into next L. of ch. 2 \* Rep., join, break silk.

**Cord:** Cut 20—54 in. lengths of silk. Take 10—Twist—double, twist again. Rep. other 10 lengths same. Draw 1 cord through 1st row Beading and 1 through 2nd row Beading, sew tog.

Sew 1 Daisy at center of bottom of bag.

No. 738



25 Around bag

The TALLEA No. 736

(Concluded from page 3)

**43rd, 44th, 46th, 47th, 48th rows.**—Kn. Plain S. Rep. 37 to 49—4 times more **49th and 50th rows.**—S. row.—Dec. 1 st. at each end of row (by knitting 2 sts. together). 41 sts. **51st, 52nd, 53rd rows.**—Kn. S., Kn. 3 rows S. bet. following B rows. **54th, 58th, 62nd, 66th, 70th, 74th rows.**—Kn. 1 st. S., 39 C., Kn. 1 st. S.: end 3 rows S. String other half of bag by reversing the way of stringing and work the other half from 77th to 1st row. Inc. where dec. was done. Sew sides together, leaving 1 3/4 in. for opening of frame.

**Fringe.**—Fasten Silk in right corner of bottom of Bag. Thread 3 C., and 5 Red B., skip (Sk.) the 5 Red B., draw needle through 3 C. again fasten into Bag, bring needle up next to the last fringe. String 5 C. and 5 Red B. Sk. the 5 Red B. and draw needle through 5 C. again. Rep. this having 2 more C. (always 5 Red B.) in each fringe until there are 31 C. This is the direct center, working across dec. amount of C. as other side was inc. until there are 3 C. Sew F. on wrong side before mounting.

Mount as in illustration and line with Red Silk.

*The CHARMAY No. 740*

*Small drawstring Bag. Crystal Beads on Gold Silk; its  
four sides simply Bordered in French Blue Iridescent.*

Made with  
**HEMINWAY  
SILKS**

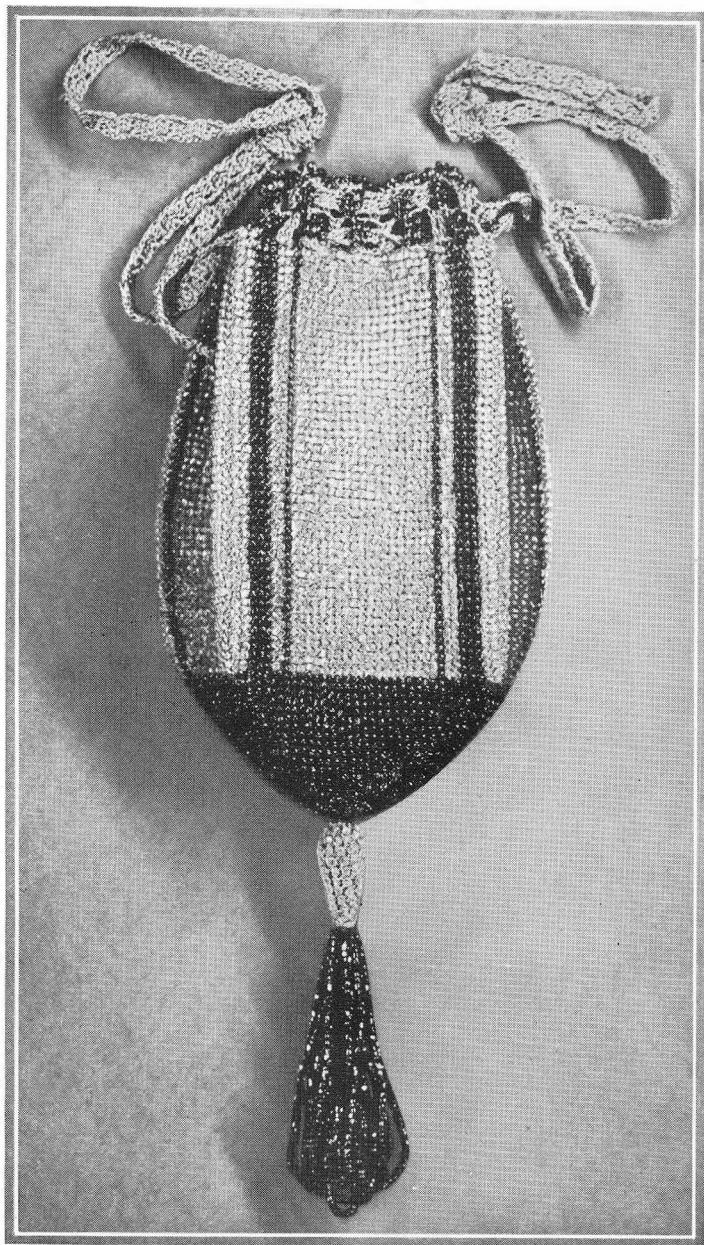
**Materials:** Heminway Purse Twist, No. 2000 Gold, 2 spools; No. 8 or 9 Crystal Beads, 8 bunches; No. 8 or 9 French Blue Iridescent, 7 Bunches; Steel Crochet Needle No. 11.

String Beads as follows: \* 4 Crystal

(C.), 3 Electric Blue (E. B.), 2 C., 1 E. B., 19 C., 1 E. B., 2 C., 3 E. B. \*, rep. \* to \* 3 times more for 1st row. Rep. stringing of 1st row 50 times more. Chain 141, join.

1st row.—\* 1 s. c. without B. in each of

(Concluded on page 12)



*The CHARMAY No. 740*

## The MERLE No. 741

*Crystal Envelope Bag, Bordered in Black.*

Made with

HEMINWAY  
SILKS

**Materials:** Heminway 25 yd. Bead Twist, No. 4 Cream, 4 spools; No. 1 Black 1 spool; (pure silk); 5 Bunches Crystal B. and 1 bunch of B. Crystal B. size 6/0.  $\frac{1}{4}$  yd. White Satin;  $\frac{1}{4}$  yd. Buckram. 1 pair No. 16 Steel Knitting Needles; 1 Steel Cochet Needle No. 11; 2 small flat-button molds ( $\frac{1}{4}$  diam.).

String 2 behs. White Crystal (C.) on one spool Cream S., and Black (B.) Crystals on 2nd spool Cream Silk. Push back C. Beads on silk and cast on 85 sts. (Size when done  $6\frac{3}{4} \times 10\frac{1}{2}$  in. long.)

**1st row.**—Kn. 1 row plain (without B.).

**2nd row.**—Kn. 1st st. (without B. always at beginning and end of row). Insert needle in next st., push B. toward needle and kn. the st. Rep. across (83 B.).

The Bag throughout is kn. 1 row without B. and 1 row with B. This will not be noted again. (Care must be used to keep edges straight). Kn. 6 more B. rows, drop silk.

**Border**

Attach Bl. B.; 2 rows. Drop S. Kn. 1 row C. B.; 1 row Bl. B.; 1 row C. B., 2 rows Bl. B., break silk.

**Center of Bag in White:** Pick up C. B. and kn. 30 rows, drop silk. Rep. Border and break silk; then kn. 7 rows C. B., break S.

**Buttons:** With Bl. S. and No. 11 needle, ch. 3, join in ring.

**1st row.**—5 s. c. in R. (working closely).

**2nd row.**—2 s. c. in each s. c.

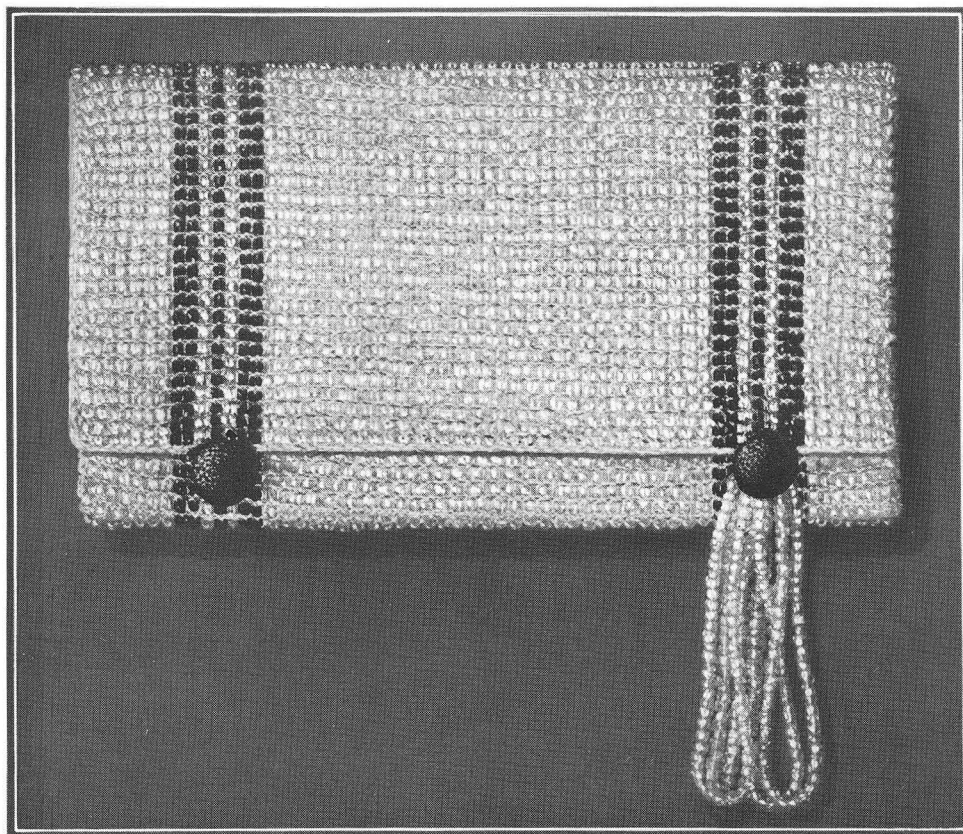
**3rd row.**—2 s. c. in every other s. c.

**4th row.**—\* 2 s. c. in 1st st., 1 s. c. in each of next 2 sts. \* Rep.

**5th, 6th, 7th, 8th rows.**—Inc. in same manner, insert mold and sew tog. at back.

**To Make Up:** Lay Bag on soft flannel and press in shape, cut Buckram slightly smaller than outside of bag, double Satin for length of Bag, lay Buckram between and fold in sides, st. around neatly on very edge, press flat.

**Pockets:** Cut Satin  $7\frac{1}{2}$  in. long. Double and insert Buckram lining. Fold in

*(Concluded on page 12)*

The MERLE No. 741

## The DANICE VANITY No. 742

*Over Arm Treasure Bag.  
Smart and Small, de-  
signed to carry needed  
accessories. Lipstick is  
concealed in Tassel.*

Made with  
**HEMINWAY  
SILKS**

**Materials:** Heminway 25 yd. Bead Twist, No. 4 Cream, 5 spools; No. 1 Black, 1 spool; 3 Bunches Jet Beads No. 10; 86 Rhinestones (black setting, size 12);  $\frac{1}{4}$  yd. Black Silk for lining; 1 Small Mirror; 1 Lipstick Holder with Ring; Steel Crochet Needle No. 11.

**String**— $1\frac{1}{2}$  Bunches of Beads on 1 spool, ch. 3, join in Ring.

**1st row.**—4 s. c. in R.

**2nd row.**—2 s. c. with B. in every st. (1 B. in every st. throughout Bag.)

**3rd row.**—\* 3 s. c. in 1st st. (Inc. always on center st.) 1 s. c. in next st., \* Rep. from \* to \* around always.

**4th row.**—\* 3 s. c. in 1st st., 1 s. c. in each of the next 3 sts. \* Rep.

**5th row.**—\* 3 s. c. in 1st st., 1 s. c. in each of the next 5 sts. \* Rep.

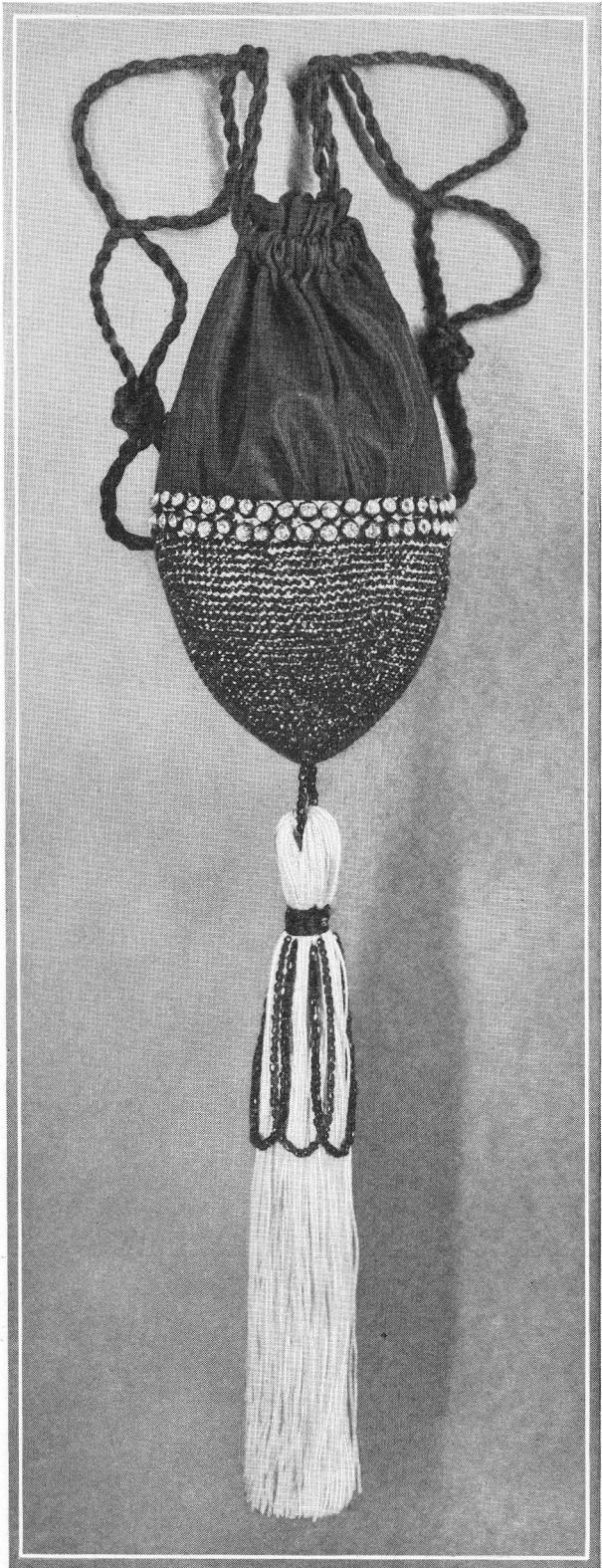
**6th row.**—\* 3 s. c. in 1st st., 1 s. c. in each of the next 7 sts. \* Rep.

**7th row.**—1 s. c. in each st. **Rep. rows 6 and 7.** (When Rep. row 6 always have 2 sts. more between each Inc. every row until there are 24 B. rows or 25 sts. bet. inc.) Crochet 8 B. rows without inc. Without B. work 6 rows s. c. Break silk. Sew 2 rows of 43 Rhinestones (each row) around crocheted top **without B.**

**Tassel:** Around a 6 in. cardboard wind the remainder of Silk, tie at top—cut on opposite end. With black Silk about 1 in. below top of tassel wind around 12 times, fasten off—still using Silk \* Thread 4 in. Beads make a 2 in. Loop and fasten in winding \* Rep. \* to \* around, three times more. Attach lipstick to center of tassel by  $1\frac{1}{2}$  in. cord.

**Lining:** Cut 12 in. long by 6 in. wide—seam-side.

(Concluded on page 12)



The DANICE VANITY No. 742

*The MERLE No. 741*

(Concluded from page 10)

edges and neatly sew to back of Bag. Snap to back at center. A smaller Pocket made in same manner, may be placed on opposite side of pocket. Fold Bag with a  $3\frac{1}{2}$  in. depth of pocket —  $3\frac{3}{4}$

in. lap; this leaves back  $3\frac{3}{4}$  in. deep. Sew Buttons on bottom of Border as shown in illustration, close with ch. Loops. **Tassel:** Under left Button attach 4 B. Loops (3 in. long).

*The CHARMAY No. 740*

(Concluded from page 9)

the next 35 sts., ch. 2, \* rep. \* to \* around (4 times in all). 1 Bead (B.) in every st. hereafter.

**2nd row.**—\* 1 s. c. with B. in each of the next 35 sts., ch. 2, \* Rep. \* to \* around. Rep. 2nd row 49 times, break silk. String 2 bchs. E. B. Beads, and attach silk.

**Bottom of Bag**

**52nd row.**—S. c. around, omitting the ch. 2. **53rd row.**—\* Dec. 1 st. (by working 2 sts. tog.) 1 s. c. in each of the next 31 sts., dec. 1 st. \* Rep. \* to \* around always.

**54th row.**—\* Dec. 1 st., 1 s. c. in each of the next 29 sts., dec. 1 st., \* Rep.

**55th row.**—1 s. c. in each st.

**56th and 57th rows.**—Dec. (Dec. rows are always the same, having 2 less sts. bet. dec.).

**58th row.**—1 s. c. in every st.

**59th and 60th rows.**—Dec.

**61st row.**—1 s. c. every st.

**62nd, 64th, 66th, 68th, 70th rows.**—Dec.

**63rd, 65th, 67th, 69th, 71st rows.**—1 s. c. in every st.

**72nd, 73rd, 74th, 75th, 76th, 77th, 78th rows.**—Dec. as before, ending last dec. row with 4 B. sts. around, fasten, break silk.

**Beading:** 1st row.—(With E. B. Beads) fasten silk at top of Bag. Ch. 4 Silk (S.) 1 tr. c. S. in next st. \* Ch. 2, sk. 2 sts., 2 tr. c. B. in next 2 sts., ch. 2, sk. 2 sts, 2 tr. c. S. in next 2 sts. \* Rep. \* to \*. Join with sl. st. **2nd row.**—Ch. 4, 1 tr. c. S. in next st., \* ch. 2, sk. the tr. c., 2 tr. c. B. in next Loop. Ch. 2, sk. the tr. c.; 2 tr. c. S. in next Loop. \* Rep. \* to \*.

**Edging:** \* 4 s. c. B. in next 4 sts., ch. 1, push 2 B. towards needle (N.), ch. 1, 1 s. c. in next st., ch. 1, push 2 B. toward N., ch. 1, 1 s. c. in last ch. 1; ch. 1, push 2 B. towards N.; ch. 1, \* Rep. \* to \* around. Break Silk. String C. B.

**Tassel Cap:** Ch. 3. Join in ring. **1st row.**—6 s. c. without B. **2nd row.**—2 s. c. (B. every other st.) in each st. **3rd row.**—1 s. c. with B. in each st. Repeat 3rd row 6 times more. Break silk, string. 1 bch. E. B. Beads. Attach silk.

**Tassel:** 1 s. c. S. in first st., \* sk., 1 st., push 6 in. B. toward needle; 1 s. c. S. in next st., \* Rep. \* to \* around. Break silk.

**Cord:** Ch. 7, sk. 4 chs., 3 d. c. in next 3 chs., turn—\* ch. 3, 1 d. c. in each of the next 3 d. c. \* Rep. \* to \* for 21 in. Make two cords. Draw through beading and fasten off. Knot each cord as illustrated.

*The DANICE VANITY No. 742*

(Concluded from page 11)

Lay a very small hem at top and about  $\frac{3}{4}$  in. from top, fold material and run in  $\frac{3}{8}$  in. tuck for Beading. Gather the bottom together and sew into Bag, fastening all around sides and bottom.

In Beading at **both sides** make an eye-

let large enough to draw cords through from each opening, and sew ends tog. Tie knot as illustrated  $1\frac{1}{4}$  in. from end.

**Cords:** Cut 16 strands Black Silk 50 in. long, using 8 strands; twist, double, twist again; Rep. with other 8 strands for 2nd Cord.

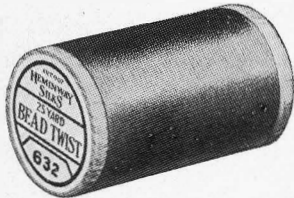
HEMINWAY SILKS PURSE TWIST AND 25-YARD BEAD TWIST  
ARE MADE IN THE FOLLOWING COLORS:

1 Black	67 Cardinal	2300 Peacock Blue
3 Pure White	68 Garnet	2304 Gray
4 Cream White	3378 Dark Purple	2305 Rose Orchid
830 Light Gray	2249 Dark Brown	2306 Mah Jong
832 Gray	665 Dark Navy	3383 Periwinkle
632 Medium Gray	666 Dark Navy	3373 Orchid
2000 Old Gold	2032 Henna	.3241 Scarlet
82 $\frac{1}{2}$ Bright Green	3557 Bronze Brown	3512 Tan
85 Dark Green	3121 French Blue	3284 Vertmousse
	2264 Jade	

## USE THESE THREADS for BEST RESULTS

The designs shown in this book are not recommended if other threads are used than Heminway silks, because it is with the particular qualities of these threads in mind that the designs were perfected. Insist on Heminway—and get sufficient material of each color at one time to complete the article.

### **HEMINWAY SILKS**



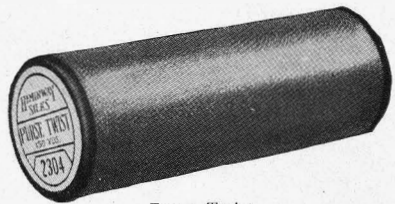
*25-Yard Bead Twist*

#### 25-YARD BEAD TWIST

A tightly-twisted, pure-silk thread of superior finish and superb lustre, guaranteed without knots. Its pliability insures ease in working every design. The use of only the purest of dyes effects a permanent brilliance. 25-yard Bead Twist is available at your dealer's in all the fashionable colors.

#### PURSE TWIST

A pure-silk thread of a tight-twist guaranteed without knots. It's superb finish and high lustre lend exceptional charm to the finished things. Its pliability simplifies the working of every design. This thread, too, is of a permanent brilliance because only the purest of dyes are used. Your dealer has Purse Twist, in all the latest colors.



*Purse Twist*

## THE LATEST DESIGN BOOKS

*Edited and published exclusively by the makers of*

### **HEMINWAY SILKS**

#### TEXTILE YARN BOOK No. 5

An elaborate and practical book of sweaters, blouses, scarfs, etc. Fully illustrated with actual photographs, diagrams and complete directions. Needle and hook gauges, directions for washing, etc., included. Price 10 cents.

#### EMBROIDERY BOOK—SERIES 10

The most pretentious book of embroidery designs yet published, for ornamentation of hats, blouses, underwear, suits, skirts and home articles. Contains over 200 designs, actual size, ready for transfer. Price 50 cents (half its actual preparation costs).

*These books may be obtained at your dealer's, or by mail.*

THE H. K. H. SILK COMPANY  
OF NEW YORK, INCORPORATED  
120 East 16th Street New York City

Mills at Watertown, Putnam, New London and Woodbury, Conn., and at Haverstraw, N. Y.



# HEMINWAY SILKS



*The Standard of Quality  
for Seventy-five Years*