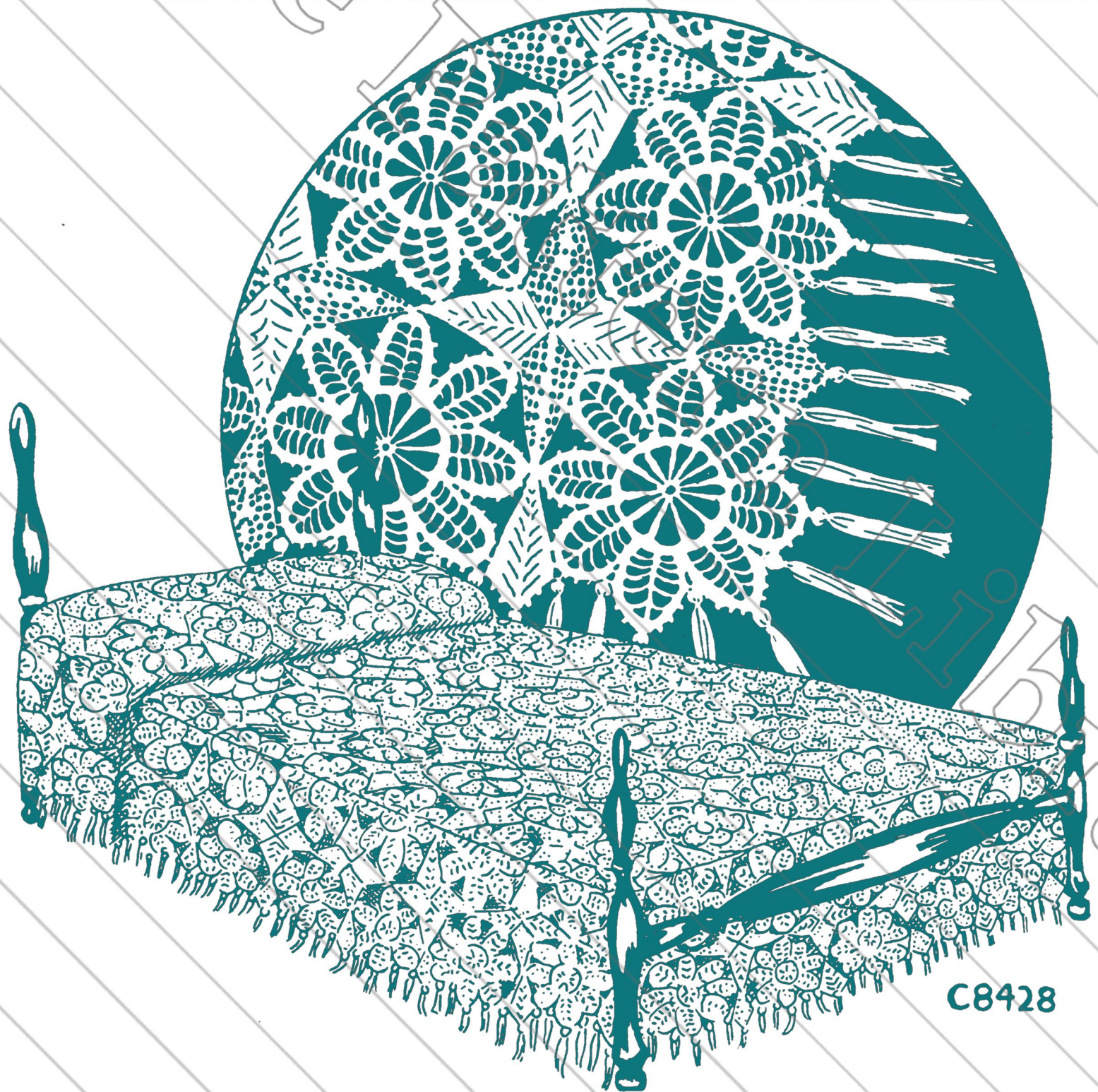


Aunt Martha's

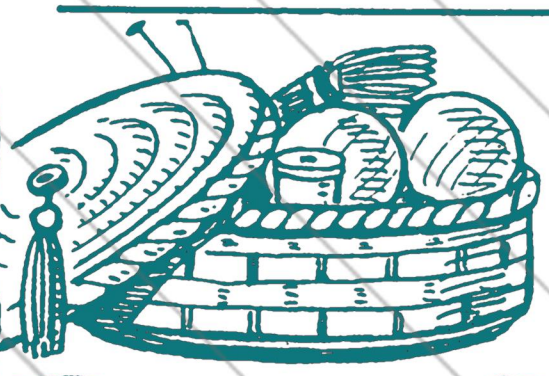
Work Basket

HOME AND NEEDLECRAFT
For PLEASURE and PROFIT

VOLUME 2 (C922) NO. 10



C8428

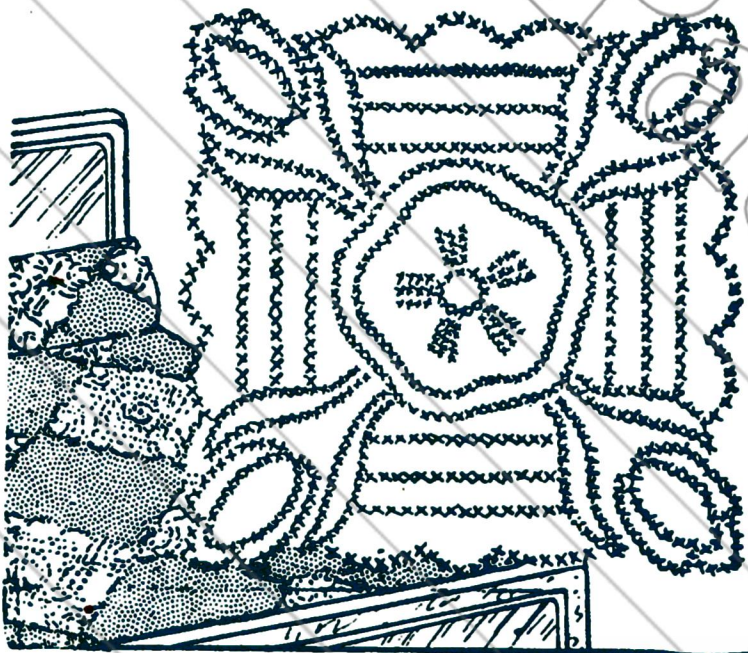


IDEAS for the Bazaar, the Home,
Gifts and Sparetime Money-makers
—with Many Inexpensive, Easily
Made Articles that find a Ready Sale.

Looking Ahead

Pick-up work—that's the program for next month's issue of the WORKBASKET. But what shall we tell you about first? Do you have some odds and ends of rick-rack braid about? You very likely have, so you will be interested in some suggestions for using these bits.

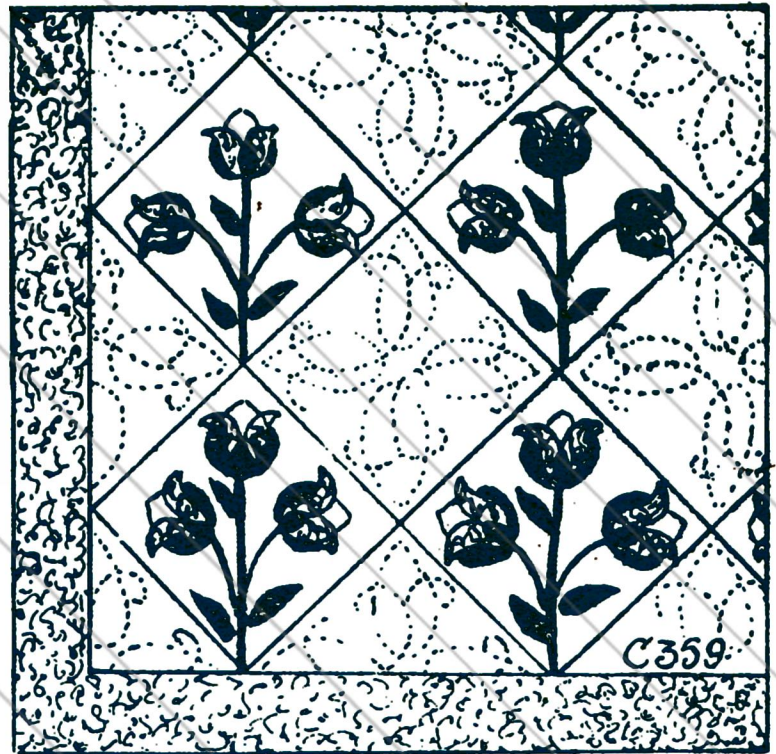
Most everyone it seems has empty flour and feed sacks that are ideal for tea towels, so on your hot iron transfer you'll find an attractive set of designs of a sunbonnet girl. These may be outlined, or you may call on your ever-faithful scrap bag for gay bits of print for appliqueing the dresses and bonnets.



Cross-stitch is not only popular but fascinating, especially when you have such an attractive tulip design. These are to be done on fifteen- or eighteen-inch blocks, so by alternating with plain ones, twenty or a dozen will make a spread of ample size.

Wouldn't you like to do something for that "most adorable baby"? Here is a suggestion that will take little time and material, but makes just the cutest baby bonnet you can imagine. Correct crochet directions will be given.

When you made that last quilt, you probably thought you had used up all the pieces of scraps that were large enough to be used, but your next WORKBASKET will tell you how to make a most serviceable as well as beautiful rug from pieces even too small to be used in the



average quilt. The best part of it all is you will need no loom, frame or hook.

Since we've drawn on the scrap bag so much this time, let's look still further and pick out some pieces for making this applique tulip quilt. Very small pieces will do. The leaves should be green, either print or plain, and you can make the flowers in two tones of almost any color you choose.

Your NUMO Transfer

If it is a lawn cutout you desire, trace the outline on wall board or plywood and with a jig or coping saw, saw it out along the line. Cover with a coat of white house paint; when dry, trace the rest of design and paint as indicated on the color chart. With fine lines a lacy effect even, may be obtained for the mitts; enamels or plain tube oil paints may be used. If the whole is covered with a coat of spar varnish, its life will be materially prolonged. Fasten a pointed stake to the back and place among your flowers.

Any or all of the butterflies may be cut from tin or galvanized iron—if you use tin cans an old pair of scissors will serve instead of the regular tin shears. Paint these with an undercoat and enamels as above. Fasten to looped wire stakes and use them to tie up tall, spindly



flowers, or to fasten with slender wire to a trellis where the breeze may blow them about.

Now, if a bedspread better answers your needs, stamp the complete design on a piece of unbleached muslin of desired size. It is well to have the design stamped only on that portion of the spread that will remain on top of the bed. What hangs over might be a colored section or even a ruffle of print. Flowers may be appliqued or embroidered. Yarn or heavy floss, even scraps of colored crochet string would be handy and would make a nice effect. Tiny running stitch is quite effective for clouds, using, perhaps two shades of blue. The house in the background may be done in black and the trees are pretty when done in a shadowy sort of way in

soft green. The dress and bonnet may be appliqued, as should also the sprinkling can. If you can find a small piece of black lace, use it for the little mitts to give a real old-fashioned air. The hat ribbon might be black satin for contrast or a lighter color, and the flowers should be done in rambler rose or satin stitch.

Use shades of blue from China to lavender for the larkspur; the other flowers may be blue bells or peonies in your choice of colors: green, of course, is used for the leaves and stems. A soft green or small print may be used for the slope, stamping it for flowers and butterflies after it is appliqued. Lace ruffles may be added for edges and pantalettes, if desired.

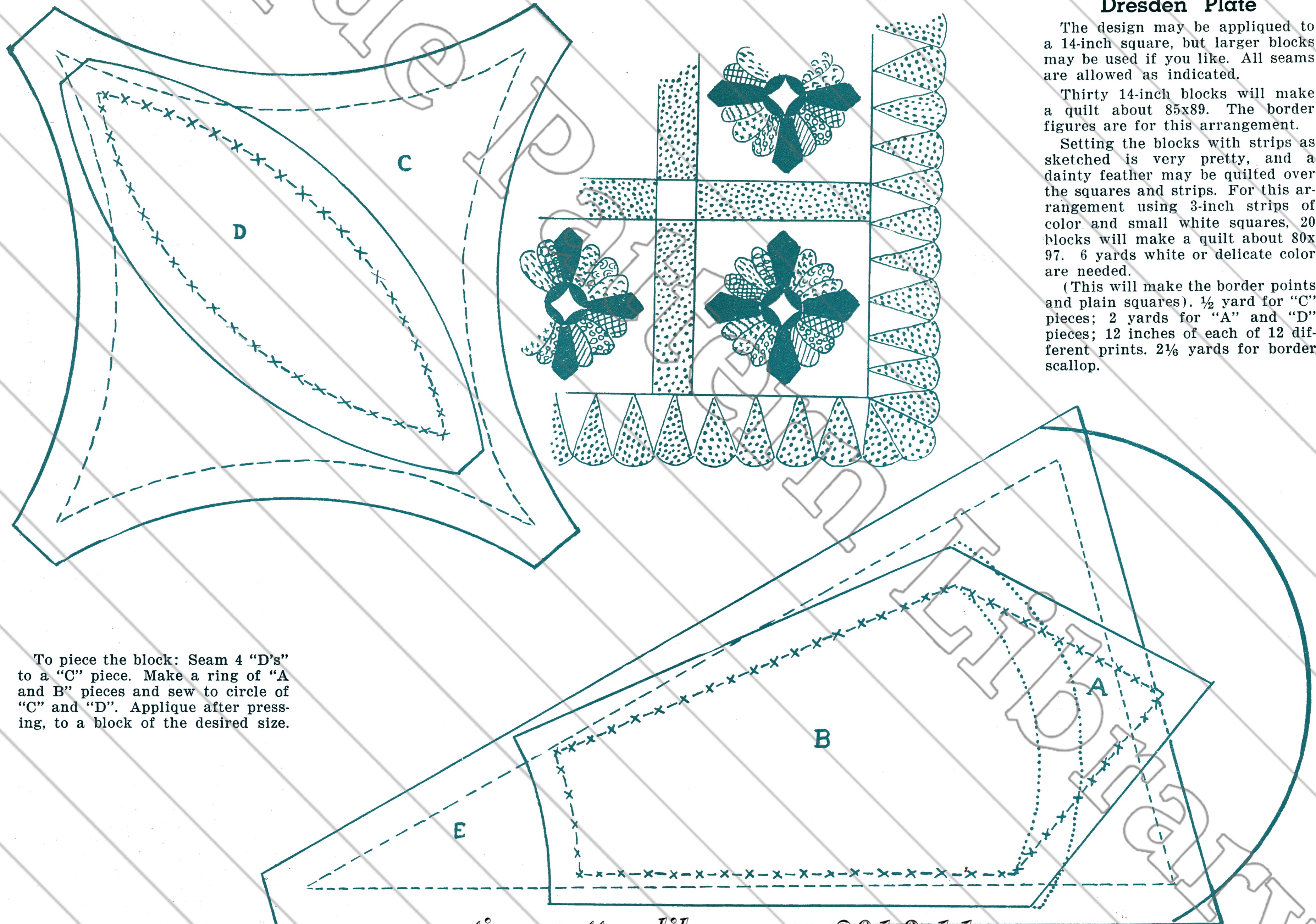
Dresden Plate

The design may be applied to a 14-inch square, but larger blocks may be used if you like. All seams are allowed as indicated.

Thirty 14-inch blocks will make a quilt about 85x89. The border figures are for this arrangement.

Setting the blocks with strips as sketched is very pretty, and a dainty feather may be quilted over the squares and strips. For this arrangement using 3-inch strips of color and small white squares, 20 blocks will make a quilt about 80x97. 6 yards white or delicate color are needed.

(This will make the border points and plain squares). $\frac{1}{2}$ yard for "C" pieces; 2 yards for "A" and "D" pieces; 12 inches of each of 12 different prints. $2\frac{1}{8}$ yards for border scallop.



To piece the block: Seam 4 "D's" to a "C" piece. Make a ring of "A and B" pieces and sew to circle of "C" and "D". Applique after pressing, to a block of the desired size.

How to Use

This transfer, as it comes to you, will seem wrong side out, but when directions are followed, the design you stamp will be like the picture.

1. Heat your iron very hot—almost to the scorching point. Use the small test design or a corner of the pattern to test the heat of your iron.

2. Cut out the design you plan to use, removing all unnecessary lettering. Lay **PRINTED SIDE DOWN** on the material in the position you wish it to be stamped.

3. Hold paper firmly in place and press, keeping the iron moving to prevent scorching in case it should

be too hot. A piece of tissue or thin paper may be laid over the pattern to protect the cloth in case your iron is larger than the design to be transferred. After having transferred the NUMO pattern a number of times, you may find this unnecessary.

The design is stamped slowly and each succeeding time, it will take a little longer, but the **IRON MUST BE HOT**. For very best results, the stampings should be in fairly rapid succession, one after another from the same design. Good results have been obtained, however, when the pattern has been laid away for some time.

Star and Flower Bedspread Design

MATERIALS—Daisy Thread in Cream, White or Ecreu, No. 10. No. 7 hook.

Approximate size, 78x97½ inches, tassels extra.

FLOWER BLOCKS—Ch 9, join into a ring, (1 sc in ring, ch 24, 1 sl st in 1st st of 24-ch) 12 times. Fasten off. **2nd ROW:** Join to 1 loop, (ch 8, 1 sc in next loop) 12 times. **3rd ROW:** Ch 1, (9 sc over 8-ch, 1 sc in sc) 12 times. 1 sl st in starting 1-ch. **4th ROW:** (The sc around circle in this row are worked in back loops only). Ch 1, 1 sc in 10 sc. (ch 22, sk last 3 ch sts, 1 sc in remaining 19 ch sts, 1 sc in next 15 sc) 7 times, ch 22, sk 3 sts, 1 sc in 19 ch sts, 1 sc in next 4 sc, 1 sl st in 1-ch at start of row. 1 sl st in back loops of next 2 sc. **5th ROW:** Ch 1, 1 sc in next 2 sc, * ch 4, 1 d tr in 3d st up next petal vein, (ch 3, 1 d tr in next 3d st) 3 times, ch 3, 1 tr in next 3d st. ch 4. 1 sc in end of vein. Now, working down other side of vein, ch 4, 1 tr exactly opposite tr, (ch 3, 1 d tr opposite next d tr) 4 times, ch 4, sk 6 sc on circle, 1 sc in back loops of next 3 sc. Repeat from * around, fastening final 4-ch to 1-ch at start of row. 1 sl st in next sc. **6th ROW:**

Ch 1, * 4 sc over next 4-ch, 1 sc in next st, (3 sc over next 3-ch, 1 sc in next st) 4 times, 4 sc over next 4-ch, 3 sc in back loop of next sc, 4 sc over 4-ch, 1 sc in next st, (3 sc over 3-ch, 1 sc in next st) 4 times, 4 sc over next 4-ch, 1 sl st in center sc between petals. Repeat from * around and join into first 1-ch. Fasten off. **7th ROW:** (The sc in this row are worked in back loops only). Join to the 1st of 3 sc at tip of 1 petal, ch 1, 2 sc in next sc, * a 5-ch p in last sc, 1 sc in same st with last sc. 1 sc in next 3 sc, p, 1 sc in 5 sc, p, (4 sc, p) twice, 7 sc, sk 3 sc on next petal, 1 sc in next 4 sc, ch 1, remove hook, insert back in 4th of last 7 sc on previous petal, catch loop and pull thro, ch 1, 1 sl st back in last sc, 4 sc, ch 2, remove hook, insert back in last p on previous petal, catch loop and pull thro, ch 2, 1 sl st back in last sc, (4 sc, p) twice, 5 sc, p, 1 sc in 2 sc, 2 sc in next st. Repeat from * around and fasten off. Make 180 Flower Blocks.

STAR BLOCKS—SOLID POINTS—Ch. 40, sk last 2 ch sts, 1 sc in next 18 sc, sk next 2 ch sts, 1 sc in remaining 18 sts. All the following rows are worked in the back loops only of sts of previous row. Ch 2, turn, 1 sc in the last 17 sc, sk 2

sc, 1 sc in next 17 sc, 1 sc in 2-ch at end of last row. Ch 2, turn, 1 sc in last 17 sc, ch 5, 1 sc in 1st st of 5-ch for a p, sk 2 sc, 1 sc in next 16 sc, 1 sc in 2-ch at end of row. Ch 2, turn, 1 sc in last 16 sc, sk p and next sc, 1 sc in 16 sc, 1 sc in 2-ch at end. Ch 2, turn, 16 sc, ch 5, 1 sc in 1st st for a p, sk 2 sc, 15 sc, 1 sc in 2-ch. Ch 2, turn, 15 sc, sk p and next sc, 15 sc, 1 sc in 2-ch. Ch 2, turn 15 sc, a ch-5 p, sk 2 sc, 14 sc, 1 sc in 2-ch. Ch 2, turn, 14 sc, sk p and next sc, 14 sc, 1 sc in 2-ch. Ch 2, turn, 14 sc, a ch-5 p, sk 2 sc, 13 sc, 1 sc in 2-ch. Ch 2, turn, 13 sc, sk p and next sc, 13 sc, 1 sc in 2-ch. Ch 2, turn, 13 sc, a ch-5 p, sk 2 sc, 12 sc, 1 sc in 2-ch. Ch 2, turn, 12 sc, sk p and next sc, 12 sc, 1 sc in 2-ch. Ch 2, turn, 12 sc, p, sk 2 sc, 11 sc, 1 sc in 2-ch. Ch 2, turn, 11 sc, sk p and next sc, 11 sc, 1 sc in 2-ch. Ch 2, turn, 11 sc, p, sk 2 sc, 10 sc, 1 sc in 2-ch. Ch 2, turn, 9 sc, sk p and next 2 sc, 9 sc, 1 sc in 2-ch. Ch 2, turn, 9 sc, p, sk 2 sc, 8 sc, 1 sc in 2-ch. Ch 2, turn, 8 sc, sk p and next sc, 8 sc, 1 sc in 2-ch. Ch 2, turn, 8 sc, p, sk 2 sc, 7 sc, 1 sc in 2-ch. Ch 2, turn, 6 sc, sk p and next 2 sc, 6 sc, 1 sc in 2-ch. Ch 2, turn, 6 sc, p, sk 2 sc, 5 sc, 1 sc in 2-ch. Ch 2, turn, 4 sc, sk p and next 2 sc, 4 sc, 1 sc in 2-ch. Ch 2, turn, 4 sc, p, sk 2 sc, 3 sc, 1 sc in 2-ch. Ch 2, turn, 3 sc, sk p and next sc, 3 sc, 1 sc in 2-ch. Ch 2, turn, 3 sc, p, sk 2 sc, 2 sc, 1 sc in 2-ch. Ch 2, turn, 2 sc, sk p and next sc, 2 sc, 1 sc in 2-ch. Ch 2, turn, 2 sc, sk 2 sc, 1 sc in next, 1 sc in 2-ch. Ch 2, turn, 1 sc, sk 2 sc, 1 sc in next, 1 sc in 2-ch. Ch 2, turn, 1 sc, sk 2 sc, 1 sc in 2-ch. Fasten off. Make 2 Solid Points for Star Block.

LATTICE POINTS—Ch 36, 1 sc in 8th st from hook, (ch 4, 1 sc in next 3d st) 3 times, ch 3, 1 sc in next 7th st, (ch 4, 1 sc in next 3d st) 4 times. Ch 6, turn, 1 sc in last 4-ch loop, (ch 4, 1 sc in next loop) 3 times. 5 dc over next 3-ch loop, working these into a Popcorn st, 1 sc in next loop, (ch 4, 1 sc in next loop) 3 times, ch 4, 1 dc in same

last loop, Ch 6, turn, 1 sc in last 4-ch loop, (ch 4, 1 sc in next) 3 times, ch 2, 1 sc in next, (ch 4, 1 sc in next) 3 times, ch 2, 1 dc in same last loop. Turn (ch 4, 1 sc in next 4-ch loop) 3 times, ch 1, a 5-dc Popcorn over next 2-ch loop, ch 1, 1 sc in next 4-ch loop, (ch 4, 1 sc in next loop) 3 times. Ch 6, turn, 1 sc in last 4-ch loop, (ch 4, 1 sc in next) twice, ch 2, 1 dc in top of Popcorn, ch 2, 1 sc in next loop, (ch 4, 1 sc in next) twice, ch 2, 1 dc in dc at end of previous row. Turn, (ch 4, 1 sc in next loop) twice, ch 2, 1 dc over 2-ch 3 dc in dc, and 1 dc over next 2-ch, working these 5 dc into a Popcorn, ch 2, 1 sc in next loop, (ch 4, 1 sc in next) twice. Ch 6, turn, 1 sc in last loop, ch 4, 1 sc in next, ch 4, 1 sc in next 2-ch close to Popcorn, 1 sc in next 2-ch, (ch 4, 1 sc in next loop) twice, ch 2, 1 dc in dc at end of previous row. Turn, (ch 4, 1 sc in next loop) twice, ch 3, 1 sc in next, (ch 4, 1 sc in next) twice. Ch 6, turn, 1 sc in last loop, ch 4, 1 sc in next, ch 2, 5 dc over next 3-ch, remove hook, put hook thro 1st dc from back to front, catch loop and pull thro, forming a Popcorn in reverse, with the puff on the same side of work as previous Popcorns, ch 2, 1 sc in next loop. ch 4, 1 sc in next, ch 2, 1 dc in dc at end of previous row. Turn, ch 4, 1 sc in next loop, ch 4, 1 sc in 2-ch close to Popcorn, sk Popcorn, 1 sc in next 2-ch, (ch 4, 1 sc in next loop) twice. Ch 6, turn, 1 sc in last loop, ch 4, 1 sc in next, ch 3, 1 sc in next, ch 4, 1 sc in next, ch 2, 1 dc in dc at end of previous row. Ch 4, turn, 1 sc in last 4-ch loop, ch 3, a Popcorn over next 3-ch, ch 3, 1 sc in next loop, ch 4, 1 sc in next. Ch 6, turn, 1 sc in next loop, ch 4, 1 sc in next 3-ch close to Popcorn, sk Popcorn, 1 sc in next 3-ch, ch 4, 1 sc in next loop, ch 2, 1 dc in dc at end of previous row. Ch 4, turn, 1 sc in last 4-ch loop, ch 2, 1 sc in next, ch 4, 1 sc in next. Ch 6, turn, 1 sc in last loop, ch 2, a Popcorn over next 2-ch, worked in reverse, so the puff is on same side of work as the rest, ch 2, 1 sc in next loop, ch 2, 1 dc in dc at end of previous row. Ch 4, turn, 1 sc in

2-ch close to Popcorn, sk Popcorn. 1 sc in next 2-ch, ch 4, 1 sc in next loop. Ch 6, turn, 1 sc in last loop, ch 1, 1 sc in next, ch 2, 1 dc in dc at end of previous row. Ch 3, turn, sk 1 ch in center of last row, 1 sc in next loop. Ch 3, turn, 1 dc in 3-ch, ch 3, 1 sl st in dc at end of previous row. Fasten off, leaving a 2-inch thread hanging. Sk next 8 spaces down side of Point, join again to next space, ch 1, turn, (3 sc over next space) 9 times, working over 2-inch thread left from Point, 3 sc in back loop of next dc, (3 sc over next space) 9 times, 1 sc in next dc. Fasten off, leaving a 10-inch thread hanging, to use in sewing Points together. Make 2 Lattice Points for Star Block. Sew the bases of the 4 Points together, completing Block. Make 154 Star Blocks.

On tissue paper, draw a true

circle slightly larger than finished Flower Blocks. Stretch and pin each Flower right-side-down on such a pattern and steam with a wet cloth and hot iron, then press thro a dry cloth until perfectly dry. Press the Star Blocks in same way. A Spread pressed in this way will keep its shape and flatness indefinitely. Sew Blocks together, following illustration.

To fill in spaces between Flowers around outside of Spread, make 50 separate Star Points, both Solid and Lattice, and sew them in place alternately.

TASSELS—Wind thread 36 times around a 3-inch cardboard, tie at one end and cut at other end. Wind a thread 1/2 inch from top and tie. Sew tassels in places as shown in illustration around sides and bottom of Spread.

Address All Correspondence and Send Orders to

NEW ENGLAND HOMESTEAD
SPRINGFIELD, MASS.

Date

Enclosed find \$1.00 for which please send me the **WORKBASKET** for 12 issues, beginning with Number.....

Mark here if this is a renewal subscription.....

Name

Town..... State.....

Address