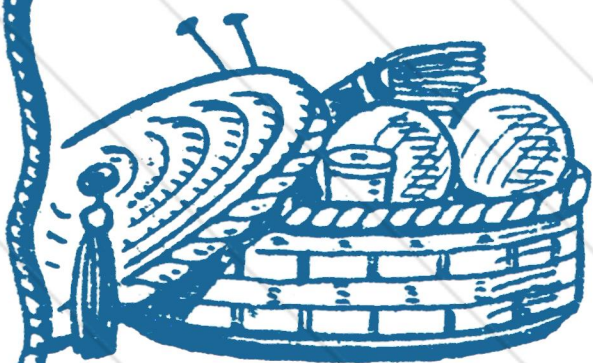


Aunt Martha's Work Basket

HOME AND NEEDLECRAFT
For PLEASURE and PROFIT



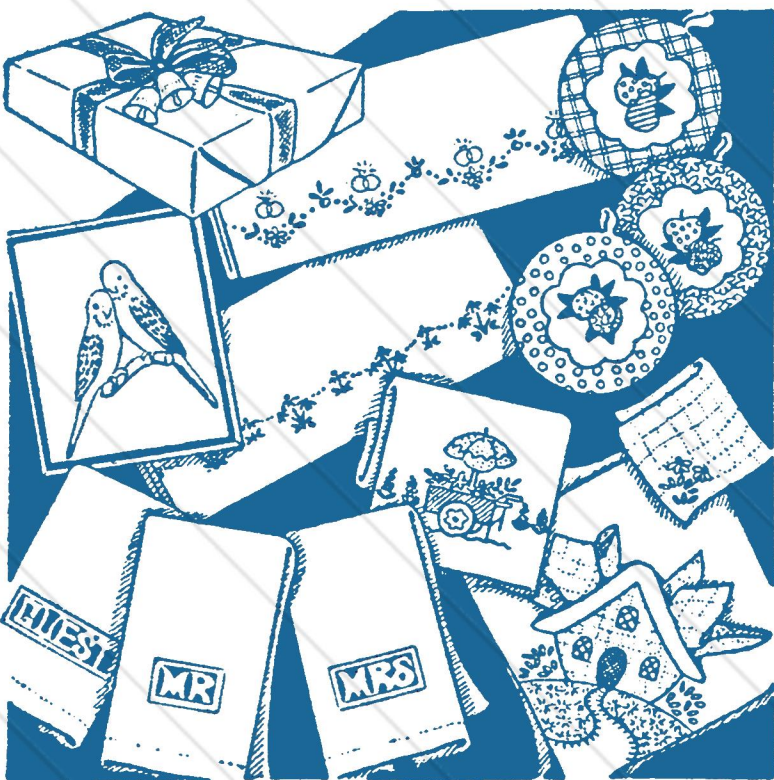
IDEAS for the Bazaar, the Home,
Gifts and Sparetime Money-makers
—with Many Inexpensive, Easily
Made Articles that find a Ready Sale.

A Bride's Eye View

Now comes an issue filled with items especially designed to please the bride, and all others who thrill at the sight of beautiful linens.



On the transfer seven tea towel motifs tell a tale which belies those rumors of a young bride's inefficiency at household



tasks. Matching panholders complete the set. Towel ends, pillow slips, his, hers, and other motifs for personalized linens make up the rest of the transfer.

A crocheted bedspread, lovely and unusual, offers relief from the tiresome repetition which so often accompanies the making of such a large piece. Here you find symmetrical five-sided blocks set with lacy diamonds of different sizes. This feature lends variety to the crocheting and results in an interesting pattern

truly worthy of becoming a treasured heirloom.

Dainty heart-shaped edges for pillow slips, towels and other items, suggest shower gifts for this year's bride. These will be equally admired and appreciated by the brides of other years on their anniversaries.



The quilt is an old favorite beloved by all—the Double Irish Chain. The heart-like shape of the shamrock leaves makes this an appropriate pattern for a bridal gift.

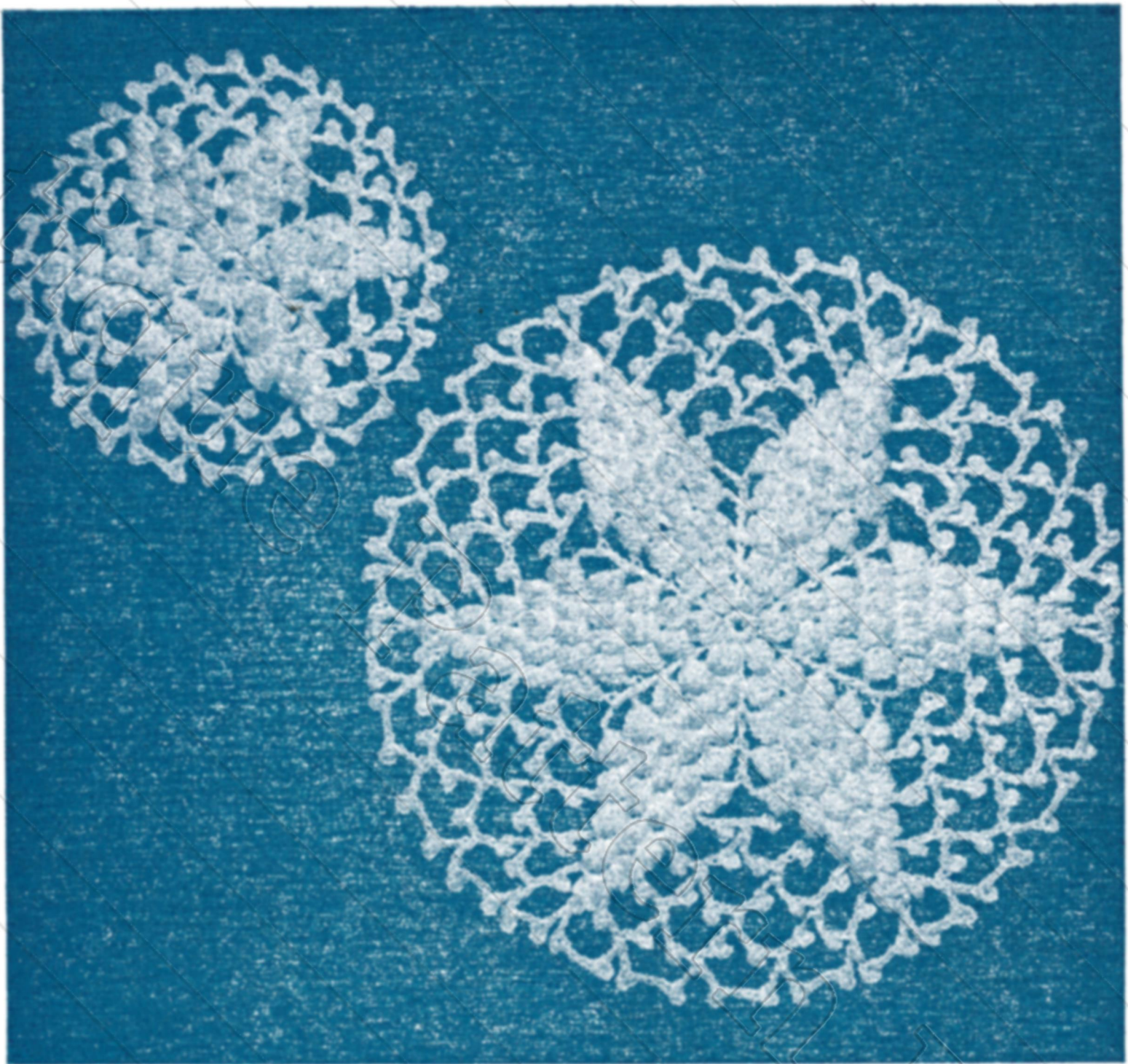
Hot Dish Mats

Mercerized crochet thread about the weight of number 5 and a number 10 steel hook were used to make these mats. About 90 yards of white or any desired shade are needed for each large mat.

With single thread ch 3, work 12 sc in center st of this 3 ch, sl st in 1st sc to close rnd.

2nd rnd: Ch 4, work 1 popcorn stitch (pc st) in next sc. (To make a popcorn stitch ch 1, 5 dc in next st, drop st from hook, insert hook back in ch 1 and draw loop through the one on hook.) * ch 2, 1 dc in next st, ch 2, 1 pc st in next st, repeat from * four more times ending with ch 2, sl st in 2nd st of beginning 4 ch.

3rd rnd: Ch 5, * 1 pc st over 2 ch of last rnd, ch 1, 1 pc st over 2 ch, ch 3, 1 dc in top of 1 dc of last rnd, ch 3. Repeat from * five times ending with ch 3, sl st in 2nd st of beginning 5 ch to close.



4th rnd: Ch 6, * 1 pc st over 3 ch of last rnd, ch 1, 1 pc st over 1 ch between two pc sts of last rnd, ch 1, 1 pc st over 3 ch of last rnd, ch 4, 1 dc in top of dc of last rnd, ch 4, repeat from * five times ending with sl st in 2nd st of beginning 6 ch.

5th rnd: Ch 7, * 1 pc st over 4 ch of last rnd, ch 1, 1 pc st over 1 ch between 1st and 2nd pc sts of last rnd, ch 1, 1 pc st between 2nd and 3rd pc sts of last rnd, ch 1, 1 pc st over 4 ch of last rnd, ch 5, 1 dc in top of dc of last rnd, ch 5, repeat from * five times ending with sl st in 2nd st of beginning 7 ch.

6th rnd: Sl st in next 2 sts on 5 ch of last rnd, sl st over ch, ch 2, * work 1 pc st over this same 5 ch (using ch 2 as 1 dc only in the 1st pc st of rnd), ch 1, 1 pc st between 1st and 2nd pc sts of last rnd, ch 1, 1 pc st between 2nd and 3rd pc sts of last rnd, ch 1, 1 pc st between 3rd and 4th pc sts of last rnd, ch 1, 1 pc st over 5 ch of last rnd, ch 6, sc back in 4th st from hook making a picot

(p), ch 7, sc back in 4th st from hook, ch 2. Repeat from * five times ending with 1 sl st in back st of first pc st.

7th rnd: Sl st over 1 ch between 1st and 2nd pc sts, ch 2, (count 2 ch as first dc) * work 1 pc st over the same first ch 1, ch 1, 1 pc st over ch between 2nd and 3rd pc sts, ch 1, 1 pc st between 3rd and 4th pc sts, ch 1, 1 pc st between 4th and 5th pc sts, ch 6, p in 4th st from hook, ch 7, p in 4th st from hook, ch 2, 1 sc in center st of 3 ch between two picots of last rnd, ch 6, p, ch 7, p, ch 2. Repeat from * ending with 1 sl st in back thread of 1st pc st.

8th rnd: Sl st over 1 ch between 1st and 2nd pc sts, ch 2, work * 1 pc st over ch 1, ch 1, 1 pc st between 2nd and 3rd pc sts of last rnd, ch 1, 1 pc st between 3rd and 4th pc sts of last rnd, ** ch 6, p in 4th st from hook, ch 7, p in 4th st from hook, ch 2, 1 sc in center st of 3 ch between 1st and 2nd p (repeat from ** twice, ending with ch 2 rather than sc)**. Repeat from * to sec-

ond **, five times, ending with 1 sl st in back thread of 1st pc st.

9th rnd: Sl st over 1 ch between 1st and 2nd pc sts, ch 2, * 1 pc st over this same ch 1, ch 1, 1 pc st between 2nd and 3rd pc sts of last rnd, ** ch 6, p in 4th st, ch 7, p in 4th st, ch 2, 1 sc in center st of 3 ch between 1st and 2nd p, (repeat from ** three more times, ending with ch 2 rather than sc)**. Repeat from * to second ** five times, ending with 1 sl st in back thread of 1st pc st.

10th rnd: Sl st over 1 ch between 1st and 2nd pc sts, ch 2, * 1 pc st over this same 1st ch, ** ch 6, p, ch 7, p, ch 2, 1 sc in center st of 3 ch between 1st and 2nd p (repeat from ** four times, ending with ch 2 rather than sc)**. Repeat from * to second ** five times, ending with 1 sl st in back thread of 1st pc st. This completes large mat. Cut and fasten thread, weave end in behind pc sts.

The first three rnds of directions given for the large mat are used in working the small mat. Continue from that point:

4th rnd: Sl st in next two sts on 3 ch of last rnd, sl st over ch, ch 2, work * 1 pc st over beginning 3 ch using ch 2 as 1 dc in 1st pc st of rnd, ch 1, 1 pc st over ch 1 between two pc sts of last rnd, ch 1, 1 pc st over 3 ch of last rnd, ch 5 (sc back in 4th st from hook making a picot) p, ch 6, p in 4th st from hook, ch 1. Repeat from * five times ending with 1 st sl in back st of first pc st.

5th rnd: Sl st over ch 1 between 1st and 2nd pc sts, ch 2, * pc st over this same ch 1 (using ch 2 as first dc of first pc st of rnd), ch 1, 1 pc st in ch 1 between 2nd and 3rd pc sts of last rnd, ch 5, p in 4th st from hook, ch 6, p in 4th st from hook, ch 1, 1 sc over ch 2 between the 2 picots of last rnd, ch 5, p in 4th st from hook, ch 6, p in 4th st from hook, ch 1. Repeat from * 5 times ending with sl st in back thread of beginning pc st.

6th rnd: Sl st over ch 1 between 1st and 2nd pc sts of last rnd, ch 2, * 1 pc st over this same ch 1 (using ch 2 as 1 dc of first pc st of this rnd) ** ch 5, p in 4th st from hook, ch 6, p in 4th st from hook ch 1, 1 sc over 2 ch between 2 picots of last rnd. Repeat from ** twice, ending with ch 1 rather than sc**. Repeat from * to second ** five times, ending with 1 sl st in back thread of 1st pc st. This rnd completes small mat. Cut thread, fasten and weave in.

Star Dish Mat

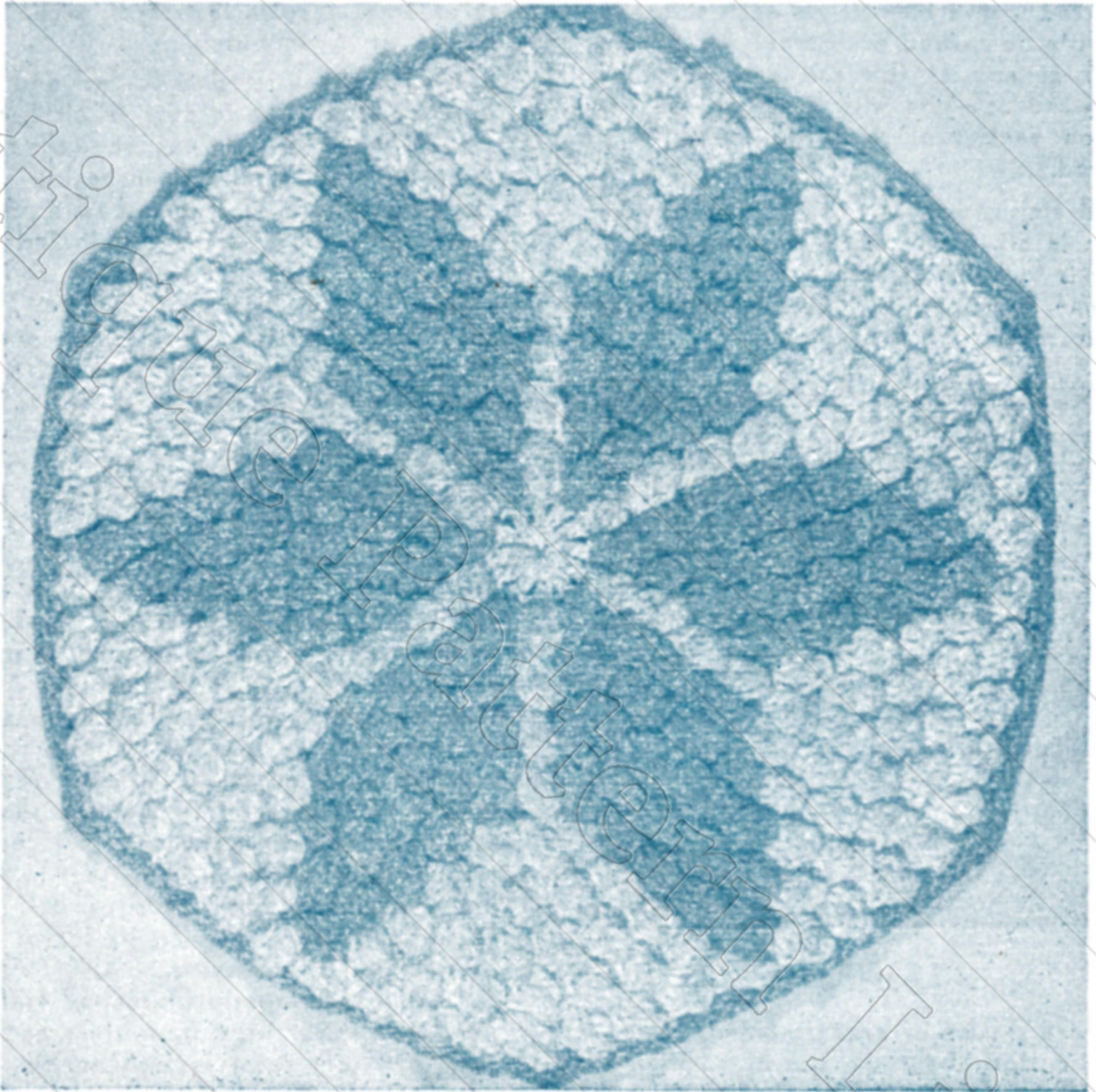
The mat shown was made of white, with star and border of delft blue. Green, red, orange or rose with white are other possible color combinations, or the order may be reversed with a white star on a colored background. Two well chosen colors may even be combined—a yellow star on a blue background is nice.

Mercerized crochet cotton about size 5 is used with a number 4 hook. About 70 yards of white are required for the background, and about 60 yards of blue for star and border. This will vary according to the difference in the work of each individual. Crochet rather tightly so the mat will hold shape and be firm. The sample measured 6" across between opposite sides. Gauge—approximately 3 rnds of popcorn stitch to one inch.

With white, ch 3, sl st in first st of ch to form ring. 1st rnd: ch 3 and work 11 dc in the ring, sl st in 3rd st of 3 ch at beginning to close rnd. 2nd rnd: ch 3 (this counts as 1 dc), work 4 dc in st at base of ch, drop st from hook, insert hook back in 3rd st of 3 ch, pick up the loop which was dropped and draw through the st on hook, ch 1 tightly (bring the blue through on this 1 ch) to fasten so st will not slip. This draws the dc up together to form a popcorn (pc) st.

In the next st of previous rnd work 5 blue dc, remove hook, insert in first of 5 dc and draw them together as before to form a blue pc. (All pc, except first in each rnd, have 5 dc, while first has ch 3, and 4 dc.) Continue around ring, working 1 white pc, then 1 blue pc, until there are 6 of each, sl st in top of 3 ch to close rnd. The thread not in use is carried through the work, crochet over it until needed, then bring it through on the 1 ch between pc. In all following rnds, 1 dc is worked between all pc.

3rd rnd: ch 3 with blue, * work a blue pc in st behind blue pc of previous rnd, 1 blue dc in same st, 1 blue pc in next blue st along edge, 1 blue dc in same st, 1 white pc in st behind white pc, 1 blue dc in same st, repeat from * all around, ending with 1 blue dc in same st with last white pc. Sl st in top of first blue pc to close rnd. 4th rnd: ch 3 with blue, * 1 blue pc in st just before first blue pc in previous rnd, 1 blue dc in same st, 1 blue pc behind first blue pc of previous rnd, 1 dc in same st, 1 blue pc in dc between 2 blue pc of



previous rnd, 1 dc in same st, 1 blue pc behind 2nd blue pc of previous rnd, 1 dc in blue dc of previous rnd, 1 white pc behind white pc, 1 blue dc in next white st, and repeat from * all around. Close with a white pc and sl st.

5th rnd: ch 3 with blue, 1 blue pc in first blue st of previous rnd, 1 dc behind first blue pc, * 1 blue pc between next 2 pc, 1 dc behind next pc, repeat from * until there are 5 blue pc—the last in last blue st behind 4th blue pc of previous rnd, 1 blue dc in same, 1 white pc in back of white pc. Repeat all around. Close with sl st. 6th rnd: (this rnd has groups of 4 blue pc and 3 white pc, with dc between) ch 3 with white, 1 white pc in top of blue 3 ch at beginning of previous rnd, 1 blue dc behind first blue pc, 1 blue pc between first and second, blue pc, 1 blue dc behind next blue pc of previous rnd, 1 blue pc between 2nd and

3rd blue pc, dc behind 3rd pc, blue pc between next two pc, dc in 4th blue pc, blue pc between 4th and 5th blue pc, dc in 5th pc, 1 white pc between 5th blue and the one white pc of previous rnd, 1 white dc in same st, 1 white pc behind 1 white pc of previous rnd, dc in same, 1 white pc in first blue dc in next blue group of previous rnd. Repeat all around, ending with 2 white pc with dc between, and sl st to close.

The 7th rnd has 3 blue pc spaced between 4 blue pc of previous rnd with dc behind the pc as in 6th rnd. There are 5 white in each group—1 in last blue dc of first blue group of previous rnd, 1 behind each of 3 white pc and 1 in first blue dc in next blue group of previous rnd. The 8th rnd has groups of 2 blue pc with 6 white between. Place these 6 white pc—1 before, 4 between and 1 after white pc of previous rnd. The 9th

rnd has 1 blue pc between 2 blue pc of last rnd with a blue dc on each side and 7 white pc spaced accordingly—drop the blue at end of this rnd and work the 10th rnd of white with 9 pc and dc between each two points of star—54 pc in rnd.

To finish, work a rnd of blue sc with 3 sc in 5th white pc of each section. If mat is to be used as a panholder, ch 14 at one point and work 20 sc closely over ch to make loop for hanging.



Leaf Belt

Three shades of green mercerized crochet cotton about the size of number 5, and a number 10 steel crochet hook were used in working this belt. Only one shade may be used if preferred. 7½ yards of thread are required for each leaf and the number of leaves you wish in your belt will determine how much thread you will need. Ch 9, turn, sk first st of ch, 1 sc in each of the remaining 8 sts, ch 3, turn around end of ch and work 1 sc in each of the 8 sts down opposite side, sl st in 1 ch at beginning to close. Cut and fasten. (Ch 3 at other end will form point on tip of leaf.) 2nd row: sk first sc after the 3 ch and fasten thread in second sc, ch 2 (always count 2 ch as one sc and do not sc in st at base), 6 sc, ch 3 around end, 7 sc, making sure that both sides have equal number of sc and that the ends of row are even, ch 2, turn. 3rd row: work this row and all future rows in back threads only of previous row to form ribs: 5 sc, 2 sc in next st, 2 sc in

back thread of first ch st, ch 2, sk center st of 3 ch, 2 sc in last st of 3 ch, 2 sc in next st, 6 sc, turn.

4th row: sk 1 sc, sl st in 2nd and 3rd sc, ch 2, 6 sc, 2 sc in next st, ch 2, sk 2 ch of last rnd, 2 sc in next st, 7 sc, ch 2, turn. 5th row: 7 sc, 2 sc in next st, sk 2 ch of last rnd, ch 2, 2 sc in next sc, 8 sc, turn. 6th row: sk first sc, sl st in 2nd and 3rd sc, ch 2, 6 sc, 2 sc in next st, sk 2 ch of last row, ch 2, 2 sc in next sc, 7 sc, ch 2, turn. 7th row: 7 sc, 2 sc in next st, sk 2 ch, ch 2, 2 sc in next sc, 8 sc, turn. 8th row: sk first sc, sl st in 2nd, 3rd and 4th sc, ch 2, 5 sc, 2 sc in next sc, sk 2 ch, ch 2, 2 sc in next sc, 6 sc, ch 2, turn. 9th row: 6 sc, 2 sc in next sc, sk 2 ch, ch 2, 2 sc in next sc, 7 sc, turn. 10th row: sk first sc, sl st in 2nd, 3rd and 4th sc, ch 2, 4 sc, 2 sc in next sc, sk 2 ch, ch 2, 2 in next st, 5 sc, ch 2, turn. 11th row: 5 sc, 2 sc in next sc, sk 2 ch, ch 2, 2 sc in next sc, 6 sc, fasten and cut. This row completes stem end of leaf.

Make as many leaves as needed following these directions. If three shades of thread are to be used, work leaves in pairs from each shade, so that in joining the leaves, both ends of belt will correspond. From five to six leaves will be needed for each side.

To join, overlap tip of second leaf to center of third ridge from stem end on first leaf, join securely with needle and matching thread; continue in this manner until you have correct number of leaves joined together for one half of belt, placing them as to shade—light, medium and dark. Repeat for other side. Fit stem ends of last leaf on each side together and sew securely. Leaves do not meet in front (see illustration); from five to seven inches are left to be fastened with ties.

To make ties, choose shade you wish to predominate in your belt—fasten in 2nd point from tip on one side of an end leaf. Ch 120, or as many as you wish to make ties desired length. Sk 1 st of ch and work 1 sc in each remaining st of ch. Fasten and cut. Repeat in corresponding point on other side of same leaf. Work ties on end leaf on other side of belt.

To finish, make four leaves from the same directions. From green or a scrap of any firm dark material, make two bags



slightly smaller than leaves. Fill bags with common table salt to give them weight, and sew together at top. Place one filled bag between two crocheted leaves. To join the leaves use matching thread, and work a rnd of sc through edge of both leaves from tip to stem end. Before closing stem end, slip the ends of both ties on one side of belt inside leaves and continue with sc to tip. Repeat on other side of belt.

Braided Belt

This belt is braided from 7 narrow crocheted strips. One white strip, and two each of navy, royal, and deilt blue are used. This is a pleasing combination which may be worn with a number of different dresses now, and will be ideal later with white, pink, or other light colors.

For a patriotic effect, so popular now with navy dresses, use two strips of red, two white, two royal and one navy. Or if you prefer, use only white, red and navy. Colors may be divided in any way you choose, perhaps 2 strips each of

white and red, with 3 of navy. The division of the colors will govern the pattern in the braid. A single white strip in the original, forms triangles in which the other colors appear in the same order at regular intervals.

Other combinations such as brown, beige and yellow; black, gray and white with red, yellow or violet; or shades of green, work up effectively, or 7 strips of one color may be used if a plainer belt is desired.

The belt shown is 1½ inches wide; for a wider belt, an extra st or so may be added to the beginning ch of the strips.

Mercerized crochet cotton about the weight of number 5 makes a good firm belt. Use a number 4 steel hook. To begin a strip, ch 4, sk 1 st of ch, 3 sc in sts of ch, * ch 1, turn, 3 sc in sc of previous row, repeat from * until strip is about 12 inches long. Cut thread and fasten. Repeat procedure until all 7 strips are about same length.

The braiding will be much easier if started now, as longer strips will tangle and be difficult to manage. Gather beginning ends of strips together—placing

a navy first, then royal, delft, white, delft, royal and navy, catch all ends together with a small safety pin. Later the ends may be whipped securely into the desired shape. Fasten this end of the strips squarely to a chair arm or other object so that it will be firm and may be pulled tightly when braiding.

To braid: Spread the 7 strips in order given above. Pick up navy strip at right, weave it over the next strip (royal), under the delft, over the white. Pick up the navy at left, bring over the next (royal) strip at left, then under the delft.

The 2 navy strips now meet at the center with the left strip over the right. In order to keep the edge straight and smooth, the strips must be folded back toward center rather than turned. Pick up the royal at right—which will be the uppermost free strip, fold this back at a right angle over the delft and toward the center of belt.

The work now begins to have a basket weave effect, and with a little practice becomes quite easy. The royal strip goes under the white, over the navy, then under the royal from left which has been brought in toward center in same manner. The point where 2 strips of one color meet and cross will always be just a little to one side of the exact center of belt.

If your colors differ from those referred to, you may find it simpler to practice the braiding by the following method:

Number the strips from left to right 1, 2, 3, 4, 5, 6, 7, making a note of number and color. Pick up 7, bring 7 over 6, under 5, over 4; pick up 1, bring 1 over 2, under 3, over 7; pick up 6,

bring 6 over 5, under 4, over 1; pick up 2, bring it over 3, under 7, over 6. Continue in this manner.

After the braiding has used up the greater part of the strips, fasten the threads on again and crochet about 12 more inches on each strip, repeat until belt is of desired length.

Shape the ends of strips into a point at each end of belt and sew securely. Several strands of the thread may be twisted to make the cords for ties, or a three strand braid may be made using seven of the threads in each strand. Attach 1 end of ties at point on belt, and make a knot about 2 inches from other end to form a tassel.

Another type of braided belt is made by first crocheting small round cords which are then braided. Begin with a chain of 4, sl st in first st to form ring, work 1 sc in each st of ring, then work round and round spirally in a continuous rnd for desired length. For a narrow belt, a three cord braid is nice. Red, white and blue is a favorite color combination.

A matching braid about 20 inches long is used for the band around top of purse. The bag portion is made of a piece of material about 12x14. Almost any kind may be used, but a heavy woolen material gives more body and shape to the bag. Navy, white or any one of the colors in the braid may be used. Fold so the piece is 6x14, seam 6" ends, turn and gather top to fit braided band. Whip bag firmly to band. Line bag with silk piece of same size and sew zipper in 10-inch opening where bag and band are joined.

Address All Correspondence and Send Orders to

The Colonial Company
Box 166, Kansas City, Mo.