

The Work Basket

HOME AND NEEDLECRAFT
For PLEASURE and PROFIT



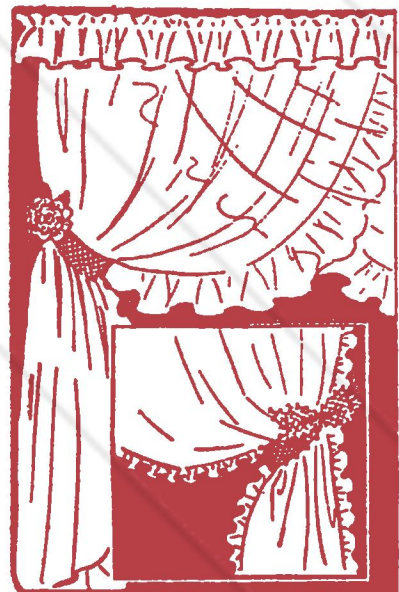
IDEAS for the Bazaar, the Home,
Gifts and Sparetime Moneymakers
-- with Many Inexpensive, Easily
Made Articles that find a Ready Sale.

WHAT'S AHEAD

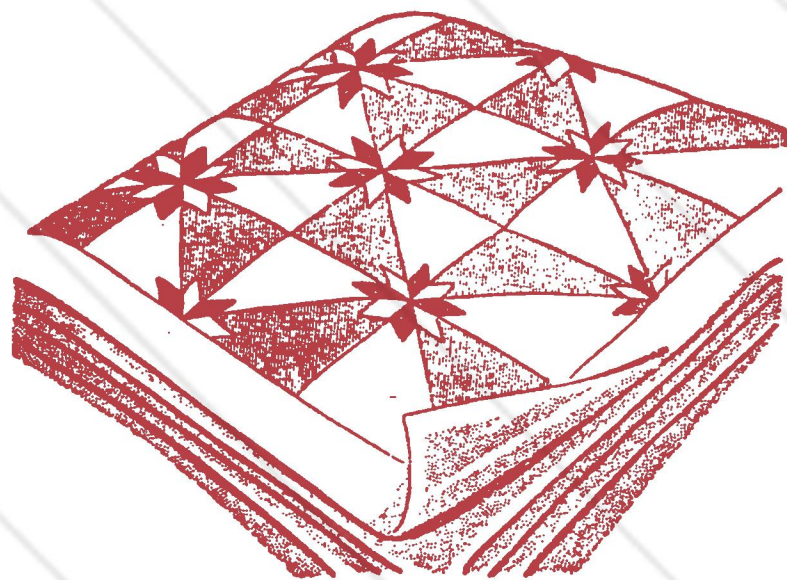
The coming issue of the WORKBASKET brings gifts galore.



In crochet you will find a frilly, ruffled doily with matching basket. Also in crochet



are curtain tiebacks with flowers or bows to adorn them. The flower and bow may also be used as hair ornaments.



The quilt is the Indian Arrowhead.



On the transfer is a doll who is truly fashionably clothed for her wardrobe contains uniforms of the women's services. Most any little girl would have fun dressing her first as a WAC, then as a WAVE. There are also



bibs for baby with animal pockets in applique. The duck and chicken may be used as patterns for miniature stuffed toys.

To make sure fudge will reach its destination in a good creamy condition, pour the warm candy into the box which you have previously lined with waxed paper. Allow to harden without cutting. Seal the top with Scotch cellulose tape.

Cook liver first over high temperature to sear. This keeps in the juices. Then lower heat.

BUNNY FOR TOY OR DOORSTOP

You will need 110 yds. of cream candlewick cotton and a bone crochet hook. The ear linings, neck ribbon, nose and mouth are pink, all outlining is done in black, and the eyes are deep blue. For a child's toy the rabbit might also be pink or blue, or for a doorstop it could be black or brown with bright plaid or polka dot ear linings and neck ribbon. If made in a dark color, the outlining and eyes should be done in white.

The head and body are crocheted separately and whipped together at the neckline so the toy may be ripped apart for laundering. The head is begun at the center top. Make a 1 ch and draw it out in a long st. Work 4 sc in this st. Rnd 2: 2 sc in each of 4 sc of previous rnd. Mark the end of this rnd. Do not join (or close) the ends of rnds but continue working round and round. Rnd 3: 2 sc in each sc of past rnd (16 sc in this rnd). Rnd 4: * sc in next sc, 2 sc in next sc. Repeat from * 7 times (24 sc in rnd). Rnd 5: *sc in each of next 2 sts, 2 sc in next st. Repeat from * 7 times (32 sc in rnd). Rnd 6: *sc in each of next 3 sts, 2 sc in next st. Repeat from * 7 times (40 sc in rnd). Rnds 7, 8, and 9: sc in each st of past rnd (40 sc in each rnd).

On the next rnd decreasing begins. To decrease, pass the hook through the front loop of 1st st and the back loop of 2nd st, thread over and draw through both loops, thread over and draw through the 2 loops on hook (a sc). Rnd 10: 19 sc in 19 sc of past rnd, dec, 19 sc in 19 sc (39 sc in rnd). Rnd 11: 18 sc in 18 sc, dec, 19 sc in 19 sc (38 sc in rnd). Rnd 12: * dec, 4 sc in 4 sc. Repeat from * 5 times, dec (31 sc in rnd). Rnd 13: dec, 8 sc in 8 sc, dec, 7 sc in 7 sc, dec, 8 sc in 8 sc, dec (27 sc in rnd). Rnd 14: 27 sc in 27 sc of past rnd. Close rnd with sl st in next sc and fasten off. The line of sts where rnd was marked is the center back of neck and the point on the opposite side is the nose.

The body is begun at the center of the base. Begin as for the head following the directions through Rnd 6. Rnd 7: * 7 sc in 7 sc, 2 sc in next st. Repeat from * 4 times (45 sc in rnd). Rnd 8: *8 sc in 8 sc, 2 sc in next st. Repeat from * 4 times (50 sc in rnd). Rnd 9: * 4 sc in 4 sc, 2 sc in next st. Repeat from * 9 times (60 sc in rnd). Sl st to next sc. This sl st becomes the center back. Mark it with a colored thread. On next rnd work 1 sc into each st of past rnd working into back loop of st only, making a "rim" around the base. This becomes rnd 1 on side of body. On all following rnds work scs in the usual way.

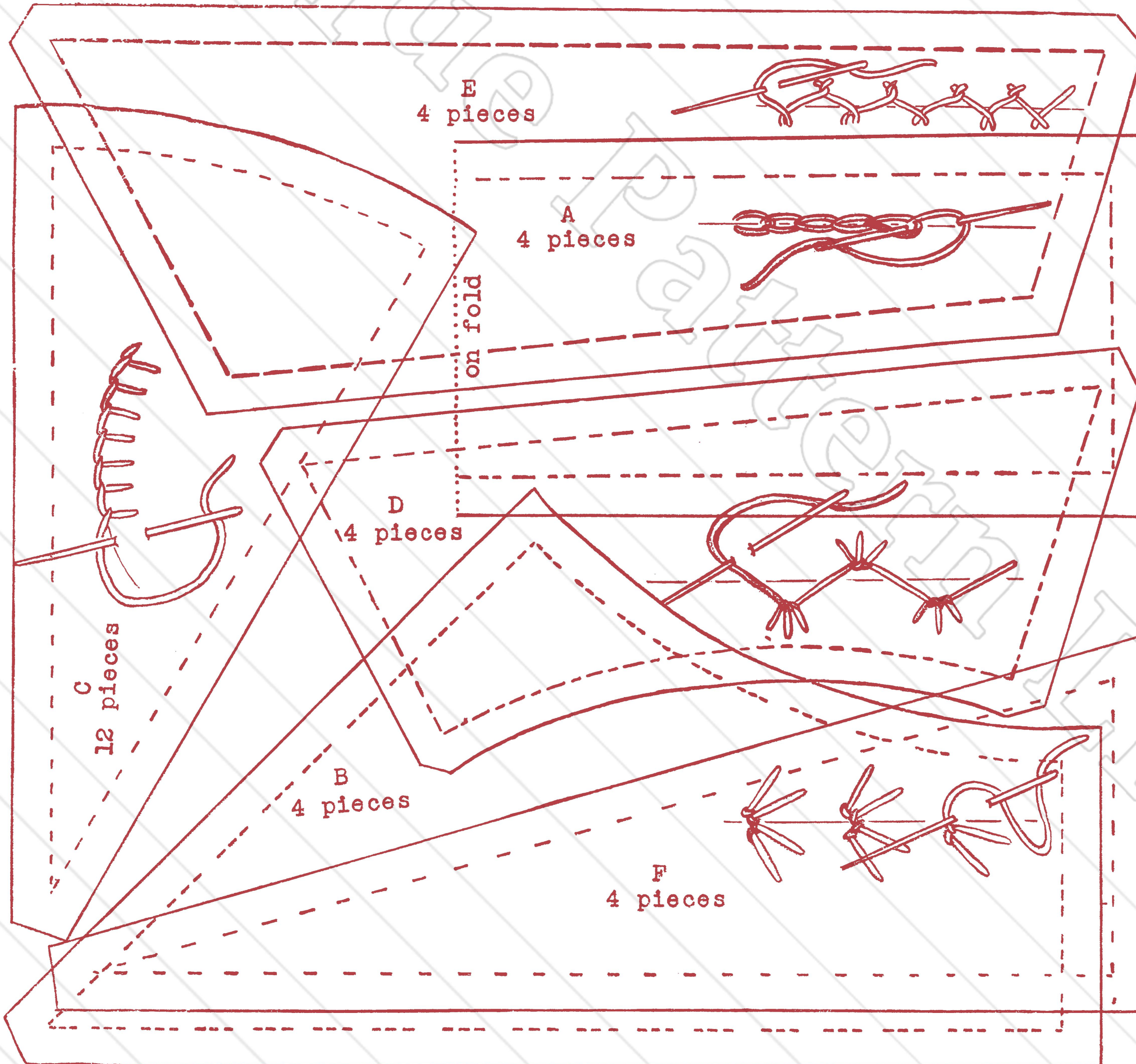
Rnds 2 and 3: sc in each sc of past rnd. Rnd 4: 2 sc in 1st sc, 11 sc in 11 sc, 2 sc in next sc, 10 sc in 10 sc, dec, 4 sc in 4 sc, dec, 4 sc in 4 sc, dec, 10 sc in 10 sc, 2 sc in next sc, 12 sc in 12 sc (60 sc in rnd). Rnd 5: sc in each sc of past rnd. Rnd 6: 15 sc in 15 sc, dec, 12 sc in 12 sc, dec, 12 sc in 12 sc, dec, 15 sc in 15 sc (57 sc in rnd). Rnd 7: sc in each sc of past rnd. Rnd 8: 11 sc in 11 sc, dec, 7 sc in 7 sc, dec, 5 sc in 5 sc, dec, 6 sc in 6 sc, dec, 7 sc in 7 sc, dec, 11 sc in 11 sc (52 sc in rnd). Rnd 9: dec, 8 sc in 8 sc, dec, 30 sc in 30 sc, dec, 8 sc in 8 sc (49 sc in rnd). Rnd 10: 7 sc in 7 sc, dec, 30 sc in 30 sc, dec, 8 sc in 8 sc (47 sc in rnd).

Rnd 11: 4 sc in 4 sc, dec, 5 sc in 5 sc, dec, 6 sc in 6 sc, 2 sc in next sc, 3 sc in 3 sc, 2 sc in next sc, 3 sc in 3 sc, 2 sc in next sc, 6 sc in 6 sc, dec, 5 sc in 5 sc, dec, 4 sc in 4 sc (46 sc in rnd). Rnd 12: 2 sc in 2 sc, dec, 38 sc in 38 sc, dec, 2 sc in 2 sc (44 sc in rnd). Rnd 13: 3 sc in 3 sc, dec, * 7 sc in 7 sc, dec. Repeat from * 3 times, 3 sc in 3 sc (39 sc in rnd). Rnd 14: 3 sc in 3 sc, * dec, 4 sc in 4 sc. Repeat from * 5 times (33 sc in rnd). Rnd 15: * 3 sc in 3 sc, dec. Repeat from * 5 times, 3 sc in 3 sc (27 sc in rnd). Join to next sc with a sl st and fasten off.

Ear: ch 14, sk 1 st, 12 sc along ch, 3 sc in end st of ch, 12 sc along other side of ch, sl st in side of last sc, sl st in 1st sc worked, ch 1. The 2nd and 3rd rnds are worked around in the same manner. Rnd 2: 11 sc in 11 sc, 2 sc in each of next 3 sc (these are the 3 sc at tip of ear), 12 sc in 12 sc along other side, sl st in each of 2 sl sts of past rnd, sl st in 1 ch, sc in each of next 13 sts, 2 sc in next st, sc in next st (this is the sc at tip of ear), 2 sc in next st, 13 sc in 13 sc, sl st in next st, fasten off. Make a second ear in the same way.

Trace around the ears on material to be used for lining. Cut out and turn under the edge so that the lining will cover 2 center rnds of crocheting, leaving 1 rnd showing. Whip linings in place making right side of crocheting the outside of ear. The base of the ears should be pinched up to cover about 4 scs on head with 2 scs between the ears. Whip into place with the base of the ears 8 rnds down from the beginning of head.

Three strands of 6-strand black floss are used for outlining. For the mouth count up 5 rows from the neck edge. Between 5th and 6th rows work the mouth in darning stitch, work over 1 sc each way from the center, and go over the st twice. Work the line from mouth (Continued on Page 6)



QUILT OF MANY TIES

Quilt is a new version of the ever popular crazy quilt and may be made of discarded ties or other printed silks or cottons. If ties are used, open and remove linings, wash and press flat.

Trace each piece of pattern on cardboard to use as cutting guides ($\frac{1}{4}$ " seams are allowed). Cut pieces at random. Rich, dark, tie colors will all blend nicely, however a gay variety of print scraps will make a lovely quilt.

Blocks may be pieced, however we suggest simply basting A in position on an 18" square of muslin, then baste F in place turning under seam that falls on A. Next baste B in same manner, then E and D. Repeat the same principle in all four corners. Piece and applique wheel of C pieces last.

Embroider over seams with heavy threads or yarns in gay colors using feather stitch, cross stitch, running and outline, long and short or any elaborate stitch you can invent. A few are sketched here.

For a quilt $91\frac{1}{2}$ " by 109" you will need 5 blocks across and 6 up and down (30 in all) and a 2" border. For sides, strips for border should measure $2\frac{1}{2}$ " by 92" and for ends, $2\frac{1}{2}$ " by $109\frac{1}{2}$ ". Quilt may be padded or simply lined with some soft material. Quilt around each piece.

(Continued from Page 3)

to nose in the same way over 1 row of sc. On the row above, work the nose in satin st in a triangular shape as shown in the illustration. Outline 2 whiskers on either side of the mouth and nose. Begin the lower ones $1\frac{1}{2}$ sc from the ends of mouth and let them slant up across 1 row for a length of 4 sc. The upper whiskers are begun $1\frac{1}{2}$ sc beyond the lower part of nose and slant upward across 1 row for a length of 2 sc.

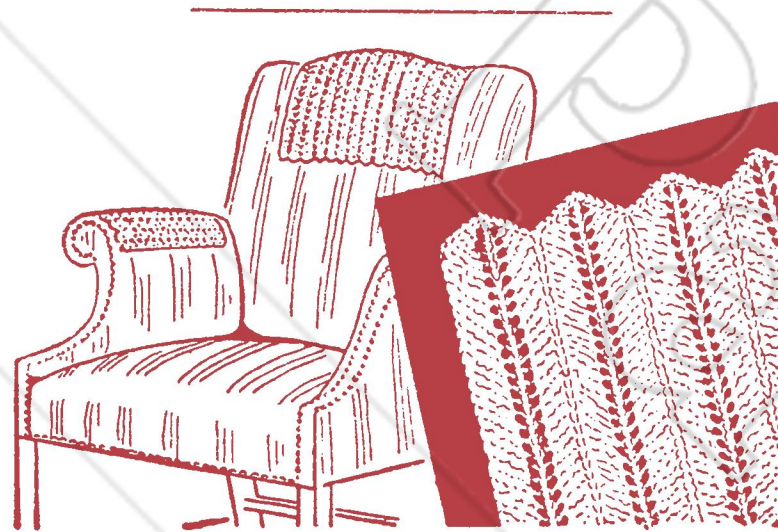
Outline circles for eyes making them 2 rows high; there is 1 row between the upper end of nose and the lower part of these circles. Leave 3 sc between the eyes. Outline eyebrows on the row above the eyes. Begin the eyebrows over the middle of the eyes and extend them beyond the eye 1 sc. Fill in the colored portion of eyes in satin stitch, following the shape shown in the illustration.

The line dividing the front legs begins at the center front and extends upward for 6 rows. One row lower and 4 sts to the right and left begin the outer outline of legs. Slant the line outward so that at the base it is 5 sts to the right and left of center. The paw outline extends upward to the middle of the 3rd row. At the base, skip 1 st to the right of the paw and begin the outline of hip. Slant this line 2 sts to the right making it 4 rows high, then continue it around toward the back for 5 sc, slanting it upward 1 row, then curve it up and back making it 3 rows higher and carrying it back 7 scs. Outline the left haunch to correspond.

To make the tail, cut 2 cardboard circles about 3" across. Cut a hole 1" in diameter in the center of each. Between the circles lay a strand of candlewick thread around the rim of the hole allowing the ends to hang out together at one side of the circles. Over both circles wrap several yards of thread, wrapping it smoothly and evenly. When the circles are well filled, insert the point of scissors between the layers of cardboard and clip through all layers of thread around the outer edge of the circle. Draw up the strand which encircles the center and tie firmly, drawing the strands into a pom-pom. Fluff it out and trim evenly until it is the desired size. With the ends of strand used for tying, sew the tail firmly in place.

If the rabbit is to be used for a toy, stuff with cotton or with finely cut rags. For a doorstop, make a bag of firmly woven material which will fit into the body portion and fill it with sand. Place it in the body and finish stuffing the body with cotton or rags. Stuff the head, match the center back of head and body and sew together.

Use ribbon or material matching the ear linings for the bow at the neck. A strip 1" wide, folded to $\frac{1}{2}$ " in width where it encircles the neck and opened its full width for the bow, is attractive, but a larger bow may be used if desired. Adjust the strip to cover the joining of neck and body; trim bow ends in a V.



KNITTED CHAIR SET

For the chair set you will need 450 yards of mercerized string weight crochet cotton, about number 5, in ecru, cream or white and a pair of steel knitting needles. Number 11 needles will produce a firm piece of knitting if used with thread of the weight suggested. The gauge is 9 sts to 1".

The pattern, which is any multiple of 9 sts, forms a row of scallops at the beginning and end of the work. For the arm piece, cast on 63 sts. Row 1: * k 2 tog, k 2, thread over, k 1, thread over, k 2, k 2 tog. Repeat from * across row. Row 2: p. Repeat these 2 rows in successive order until the work measures 12" from the beginning. Cast off. Make second arm piece in the same way.

To begin the chair back, cast on 108 sts. Repeat Rows 1 and 2 as given for the arm piece in successive order until the work measures 9". Cast off. The pieces may be lightly starched, stretched and pinned into shape and left to dry. If they are not starched, press well on a padded surface with the wrong side up. Use a damp cloth.

This lace stitch may be used to make a dresser set or place mats for the table.

To keep thread from knotting and kinking when sewing, always make the knot in the end of the thread that first leaves the spool.

The flavor of an apple pie is greatly improved if the juice of half a lemon is squeezed over the apples after they have been placed on the lower crust.

This necklace is shown made in 3 tones of one color. The small plume is pale willow green, the middle one is bright green, and the large outer plume is dark pine green. The neckband is dark green and the tie bright green. Any other color might be used shading the plumes from light to dark, or a combination of colors may be used. You will need a No. 8 crochet hook and 30 yd. of the dark color, 10 yd. of the medium, and 5 yd. of the pale tint in a string weight thread. Crochet closely.

Special instructions: half double crochet (hdc), thread over hook, insert hook in st, draw loop through st, thread over and draw through all 3 loops on the hook at once. Half treble (htr), thread over hook twice, insert hook in st, draw loop through st, thread over and draw through 2 loops, thread over and draw through the 3 loops remaining on the hook. To attach thread securely, make a slip knot in thread. Insert hook in st, run it through slip knot, thread over and draw through st knot and st, thread over and draw through loop on hook. Work over the knot and loose end for a few sts, then cut off excess length.

With light color, ch 10; sk 1 st of ch and in next st work 1 sc, 1 hdc, 2 dc, 1 htr, 3 tr, htr (the entire group is made in 2nd st from hook); 1 dc in next st; 1 dc, 1 sc in next (2 sts worked in 1); 1 sc in next; sl st in next. Draw end through and cut leaving enough to weave in work later. Make 5 of these "plumes" according to the above directions.

Hold one of the 1st plumes right side up. Using the medium color and working in back loop of sts only, attach thread in 5th st of 1st plume. This will be the 5th st worked on large part of plume. In next st work 1 sc, 1 hdc, 1 dc, 1 htr, 4 tr; work 2 tr in each of next 3 sts; 1 htr, 1 dc in next; dc in next; hdc, sc in next; sc in each of next 2 (the 2nd sc should be taken through the sl st of previous row and also through the beginning ch as this will give additional firmness); sl st in next. Draw thread through and cut. Complete this plume on all 5 groups.

Holding a motif right side up, attach the dark green in 6th st of plume just made. Working in back loop of st only, 2 sc in same st; hdc, dc in next; dc in next; 2 dc in next; dc in each of next 3; 2 dc in next; dc in each of next 3; hdc in next; hdc, sc in next; sc in each of next 6 sts (on the 5th sc go into sl st and beginning ch for additional firmness); sl st in next, draw end through and cut. Complete this section on all motifs.

Using dark green attach the thread in the 5th st of 2nd plume. This will be 1 st in advance of the joining made for previous row. Join in the back loop of this st only. After joining, work over both loops of sts so there will be no ridge to separate this row of dark color from the previous row. Sc, hdc, dc, 2 tr in next st (this will be 1st st of previous row); 2 tr in each of next 5 sts; 1 htr, 1 dc in next st; dc in next; dc, hdc in next; sc in each of next 2; sl st in next; draw end through and cut. When all motifs are completed, thread the ends into a darning needle and weave as inconspicuously as possible into the back of work. Leave the thread from the beginning ch hanging as this will later be woven into the neckband.

For the neckband use the darkest color. Make a firm, close ch of 21", sk 2 sts of ch, sc in every other st of ch. The ch will be the upper or neck edge of band. Mark the center of the band with a pin and measure 2" from each end and mark. Bring one end around toward the inside to the pin to form a 1" loop and sl st it in place. Measure off $1\frac{1}{2}$ " and 3" on either side of the center pin and mark. Sl st along lower edge of neckband (wrong side up) working loosely. When the 1st pin is reached lay a motif wrong side up with the beginning ch end over a st of neckband and make next sl st through both ch end of motif and st of neckband. Attach motifs at each pin across front, sl st to within 2" of end and bring end around to form a loop, sl st in place. Using a darning needle, sew the motifs more securely by using the thread left hanging from the ch end.

For the tie, cut 6 pieces of thread in 19" lengths. Lay ends even and make a knot about 1" from the end by drawing the ends through a loop. Separate the strands into 3 groups of 2 threads each and braid closely to end. Tie another knot about 1" from end of braid, unravel end, and trim both ends into even tassels. Thread through loops and tie in a bow. Press well on a padded surface, wrong side up, using a damp cloth.

SPIRAL NECKLACE

You will need 10 yd. of peach and 60 yd. of aqua thread in a string weight, about No. 5, and a No. 8 steel crochet hook. You may substitute any other color combination that you wish. To make the necklace cord, cut 7 strands of aqua each 2 yd. long. Thread a darning needle with a strand of aqua about 24" long. Lay the 7 strands together, ends even, double all strands in center, and holding both ends of the group of strands together, place the

looped end of strands over a nail, hook, or some other projection which will hold them. Beginning close to the projection, twist all strands closely and evenly clear to the end. Double the twisted cord back on itself and it will twist into a double cord. The cord must be held so it will not untwist while you secure the ends. Make a loop of about 1" at the end where you last doubled the cord. Using the end of thread in darning needle, wrap the cord firmly at this point for about 1/4" wrapping over the loose end of wrapping thread and running other end back and forth under wrapping to fasten. At other end, wrap over all parts of cord leaving a 1" loop; then double the cut ends back over the wrapping and continue to wrap over these ends. After fastening the thread used in wrapping, the excess ends of cord may be trimmed close to wrapping.

For the spirals, using aqua, ch 20, sk 4 sts of ch, 3 tr in 5th st of ch, 3 tr in every

other st of ch, ch 4, sl st in st with last tr. Draw peach through loop on hook, turn work over (wrong side of trs is now up), and work 1 sc with peach in each st of 4 ch, each tr, and each st of 4 ch at end of trs, working into front loops only. Sl st in st with last tr, cut end, draw through and weave into work. Beginning at this sl st with wrong side of trs out, roll the work into a spiral.

Thread the aqua thread ends at top into a darning needle and secure the last twist of spiral by drawing these ends through it into the work. Make 7 spirals. Arrange 1 at center of neck cord and 3 on either side spacing them 1 twist apart. Using a darning needle threaded with aqua, sew them in place with a st or 2 through top of spiral and lower strands of cord. Run thread from motif to motif through the cord.

Make a braided tie of peach or aqua as given in the directions for the plume necklace and lace it through loops at ends of cord.

CHANGE OF ADDRESS

ON..... I WILL MOVE FROM:

OLD ADDRESS

TOWN..... STATE.....

TO

NEW ADDRESS

TOWN..... STATE.....

NAME.....

USE THIS HANDY FORM IN NOTIFYING US OF YOUR CHANGE OF ADDRESS. IT IS NECESSARY THAT WE HAVE YOUR OLD ADDRESS BEFORE WE CAN MAKE A CHANGE, SO BE SURE TO INCLUDE THIS. ALSO GIVE US AT LEAST THREE WEEKS' NOTICE.

ADDRESS ALL CORRESPONDENCE AND SEND ALL ORDERS TO

MODERN HANDCRAFT

4011 Central, Kansas City 2, Mo.