

*Creative Commons 4.0 NC SA BY FREE DISTRIBUTION ONLY - NOT FOR SALE*  
**MINERVA**

*Stitches and Styles*



*Vol. -2  
Price 25¢*

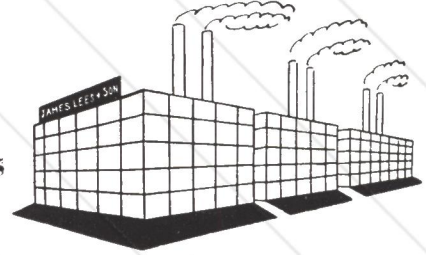
# Introduction

Mrs. Jones



(we'll call her that, — she represents the discriminating

U. S. shopper) may not care about the three tremendous Lees Mills



which take the raw material



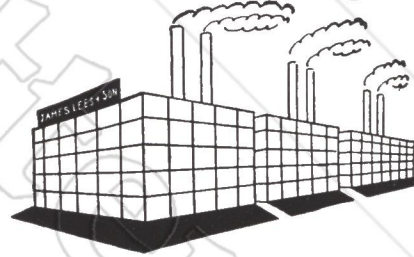
and turn out the yarn.



And per-

haps Mrs. Jones isn't particularly interested in how four generations of the same

family have watched over what these mills



do. Mrs. Jones may

never meet the famous U. S. designers



on the Lees payroll but she knows

that the Minerva band



around the ball of yarn means she

has literally the finest quality yarn that can be produced in the world. This Minerva

trademark

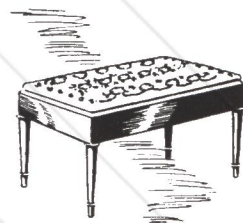


also tells her that she will get the finest designs and colors,

whether it be style garments



needlepoint



cottons



rugs



or afghans



and she will thank her lucky stars



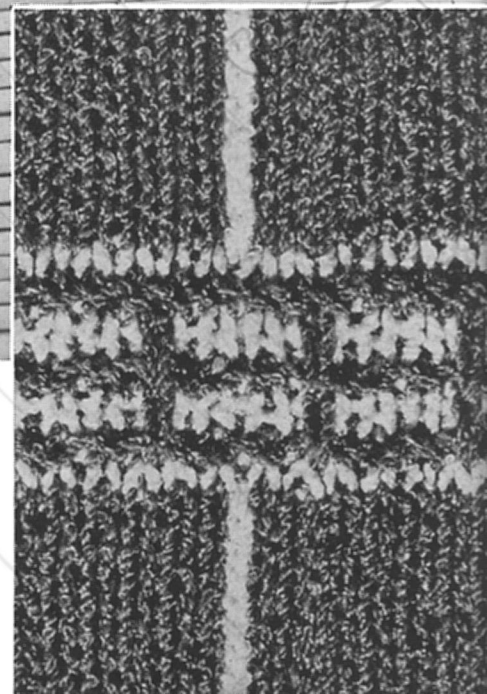
that she joined the big

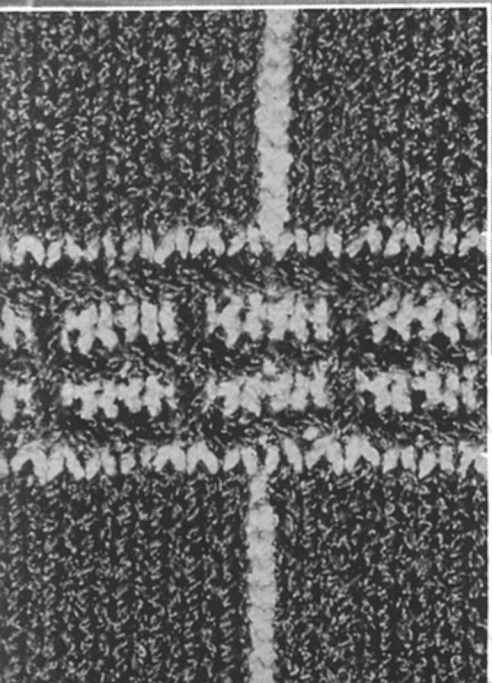
happy Stitches & Styles subscriber family.



*Oronoco*

DRESS. Charts and instructions on page 41.





*Chronoco* JACKET. Charts and instructions on pages 41 and 42.



Ledgewood



**LEDGEWOOD COAT**  
Charts and instructions on  
pages 43 and 44.

# Glenbrook

No. 202  
**1 PIECE FEATHERDOWN DRESS**  
 Size 16

1 Pr. No. 3½ M. M. Needles—14 inch  
 —for blouse

Scale: 8 sts. to 1 inch  
 10 rows to 1 inch

1 No. 2 Steel Circular Needle—29 inch  
 —for skirt

Scale: 8 sts. to 1 inch

1 No. 5 Steel Crochet Hook

**MINERVA FEATHERDOWN**

Natural No. 1066..... 13 Balls  
 Trim—Kent Green No. 1071 1 Ball

Total ..... 14 Balls

Chart symbols explained on page 45.

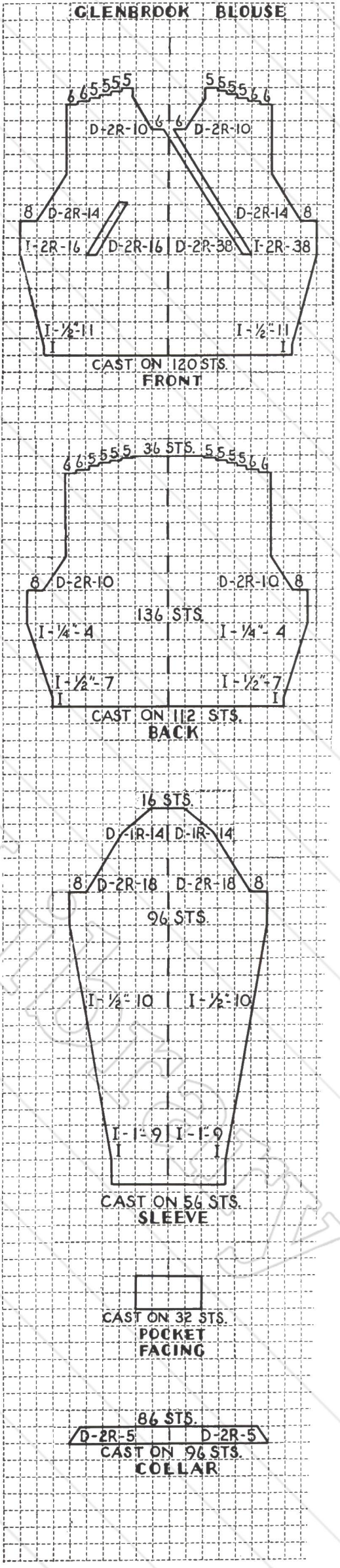
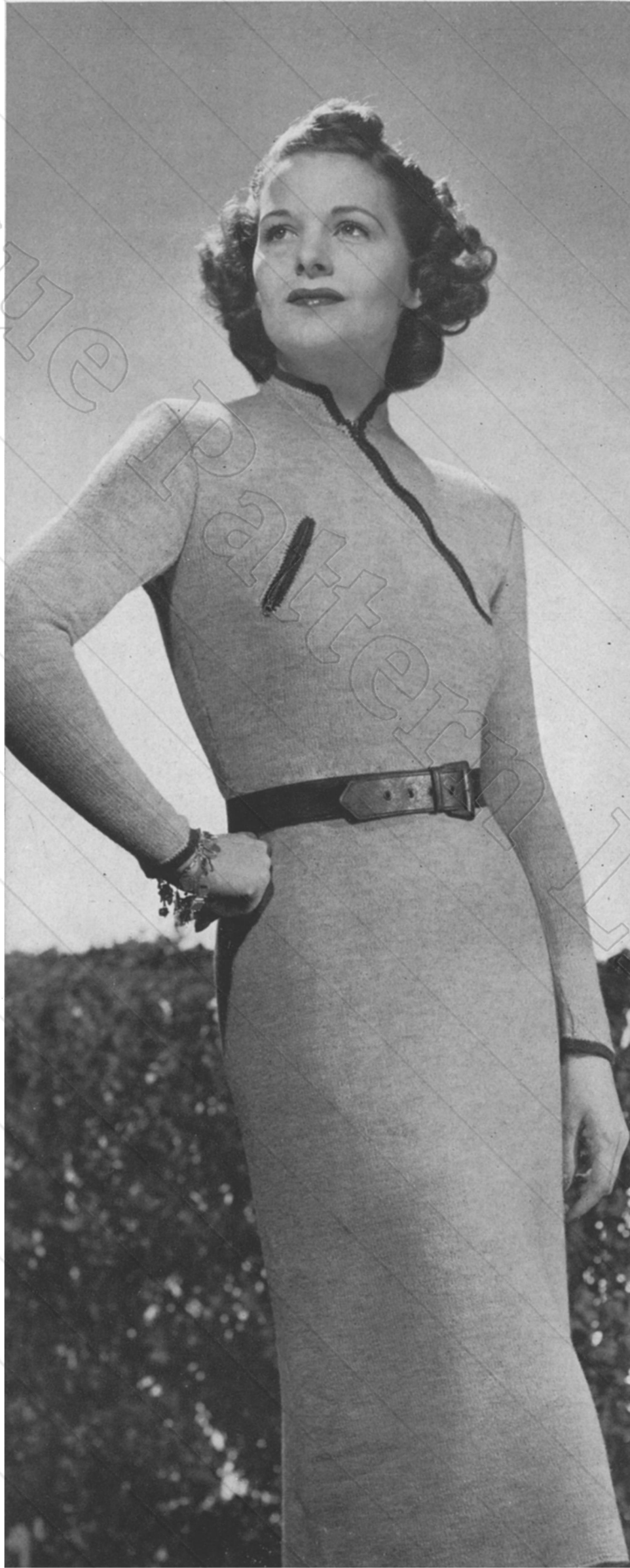
The dress of Natural is worked in Stockinette St., with crocheted edges of Kent Green around collar, bottom of sleeves, front opening and pocket opening.

**BLOUSE:** Follow chart for Front. After last increase at side edge, K. 32, bind off 4 sts., K. 72, bind off 4 sts. and place both groups of sts. on a st. holder. On remaining 32 sts. follow chart, increasing for pocket opening. On center 72 sts., decrease for pocket opening and front opening. Cast on 4 sts. over pocket opening, join and continue to follow chart for remainder of right front. Slip the 32 sts. from st. holder and follow chart for remainder of front.

Follow charts for Back, Sleeves, Collar and Pocket Facing.

Finishing, see page 46, sewing 96 cast on sts. of collar to neck. With Natural, work 1 row S. C. around collar, sleeves, pocket and front openings. With Kent Green, work 2 rows S. C. around pocket opening and around collar, then work 2 rows S. C. on front opening and around collar. Work 4 rows S. C. at bottom of sleeves. Sew 4 inch slide fastener in pocket opening and 9 inch slide fastener in front opening. Sew pocket facing in place.

**SKIRT:** Follow Standard Skirt Chart No. 1 on page 45. Finishing, see page 46. Join blouse and skirt and work casing for elastic (see page 46).



# West Lake

No. 203  
WOOLGORA JACKET

Size 16

1 Pr. No. 3 M. M. Needles—14 inch  
Scale: 8½ sts. to 1 inch  
12 rows to 1 inch

MINERVA WOOLGORA

Primrose No. 492..... 9 Balls

Chart symbols explained on page 45.

The jacket is worked in Stockinette St. with borders of K. 2, P. 2, ribbing (indicated on charts by dotted lines).

Follow chart for Right Front. Buttonholes are 2 sts. wide and 2 sts. from edge. To work buttonholes, see page 45. After ribbing border, K. 28, increase 1 st. in each of the next 12 sts., K. to end of row.

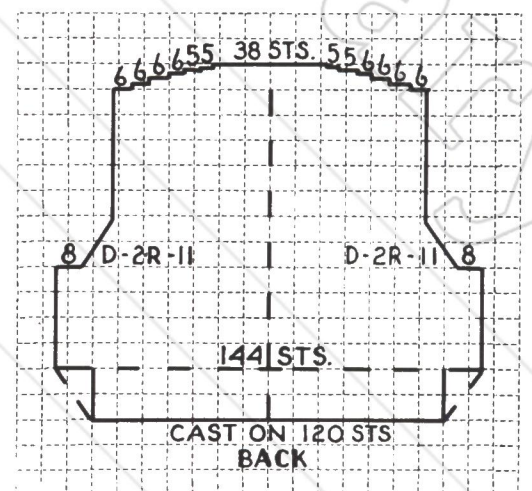
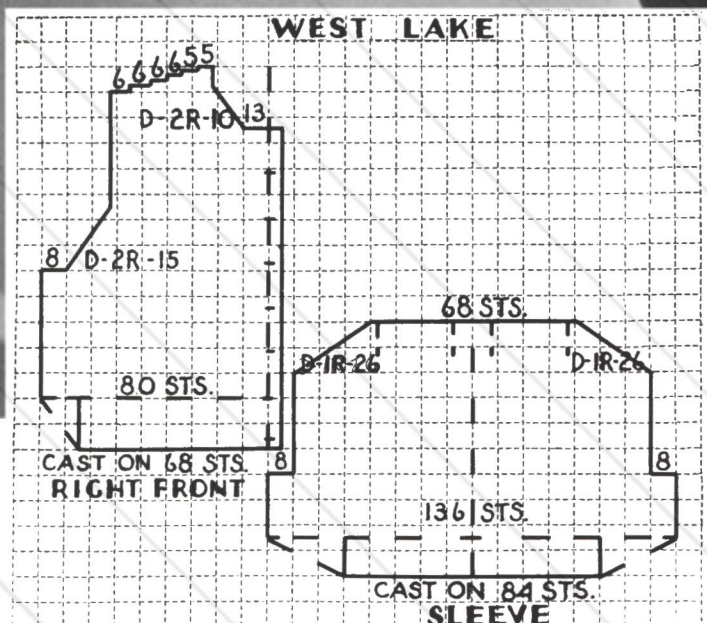
Work Left Front to correspond, omitting buttonholes.

Follow chart for Back. After ribbing border, increase 1 st. in every 5th st. across row.

Follow chart for Sleeves. After ribbing border, K. 16, increase 1 st. in each of the next 52 sts., K. to end of row.

Pick up 124 sts. around neck and work in ribbing for ½ inch, working a buttonhole on first row.

Finishing, see page 46. Sew sleeves in place, folding at dotted lines to form two inverted box pleats. Face fronts with 7/8 inch matching gros-grain ribbon.



*Designed for evening wear on cool nights*



# Brookville

## No. 204 2 PIECE FEATHERDOWN DRESS

Size 16

1 Pr. No. 2½ M. M. Needles—14 inch  
—for borders and tie  
Scale: 9 sts. to 1 inch  
(Stockinette St.)

1 Pr. No. 3 M. M. Needles—14 inch  
—for blouse  
Scale: 8½ sts. to 1 inch  
11 rows to 1 inch

1 No. 1 Steel Circular Needle—29 inch  
—for skirt  
Scale: 9 sts. to 1 inch  
1 No. 2 Steel Crochet Hook

### MINERVA FEATHERDOWN

Blouse—Pottery Rust No. 1063 5 Balls

Skirt—Pottery Rust No. 1063 7 Balls

Total ..... 12 Balls

Chart symbols explained on page 45.

The blouse is worked in Pattern No. 2 with borders (indicated on charts by dotted lines) and tie worked in Pattern No. 1. The skirt is worked in Stockinette St.

**PATTERN No. 1:** Multiple of 34 sts. plus 28.

Row 1—K. 5, \* (P. 2, K. 2) for 18 sts., K. 16, repeat from \* across row, ending K. 5 instead of K. 16.

Row 2—P. 5, \* K. 2, \* \* skip 1 st., P. 1 in back of next st. (by pulling up the st. slightly and inserting needle from left to right) but do not slip the st. off the needle, then P. the skipped st. and slip both sts. off the needle, K. 2 \* \*, repeat between \* \*'s 3 times more, then P. 16. Repeat from \* across row, ending P. 5, instead of P. 16.

Repeat these 2 rows for Pattern No. 1.

**PATTERN No. 2:** Multiple of 6 sts. plus 4.

Row 1—K.

Row 2—P.

Row 3—K.

Row 4—P.

Row 5—K. 1, \* slip 1, K. 2 tog. but do not slip the sts. off the needle, then K. the first of the K. 2 tog. and slip both sts. off the needle, K. 3, repeat from \* across row, ending slip 1, K. 2 tog. and K. the first of the 2 tog. as before.

Row 6—\* Skip 2 sts. P. the slip st. in back of work and leave it on the needle, P. each of the 2 skipped sts. and slip the loop of the slip st. off the needle, P. 3, repeat from \* across row, ending P. 1.

Work 4 rows in Stockinette St.

Row 11—K. 5, repeat from \* of Row 5 across row, ending K. 2.

Row 12—P. 2, repeat from \* of Row 6 across row, ending P. 5.

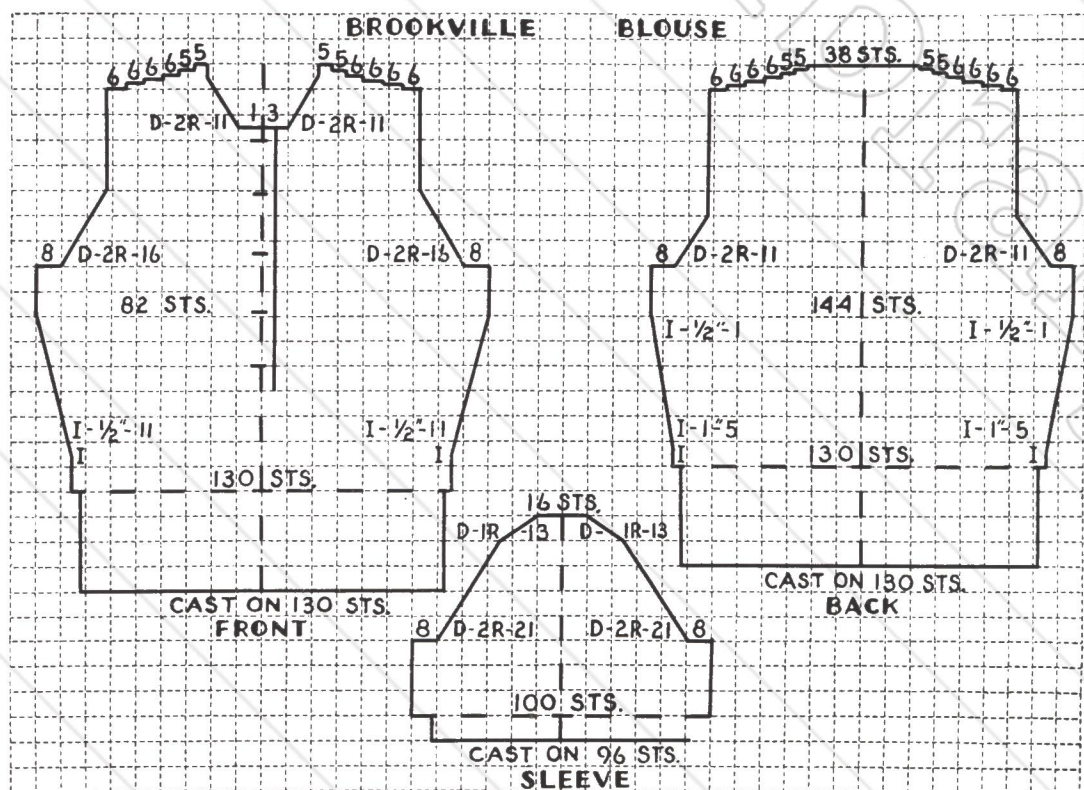
Repeat these 12 rows for Pattern No. 2.

Follow chart for Front. After 6th increase, work over 66 sts. and place on a st. holder. On remaining 76 sts. continue to follow chart for right front. Buttonholes are 5 sts. wide and 4 sts. from edge. To work buttonholes, see page 45. Finish right front, pick up sts. from st. holder, cast on 10 sts. at center edge for placket and follow chart

for left front, omitting buttonholes. Follow charts for Back and Sleeves. After border on sleeves, increase 1 st. in each of the first and last 2 sts. Cast on 4 sts. for Tie. P. 1, K. 2, P. 1. Next row, increase in first and last sts. and twist 2 center sts. as in Row 2 of Pattern No. 1. Continue to increase 1 st. at the beginning and end of every other row working in pattern. When there are 14 sts. on needle, work even in pattern for 42 inches, then decrease 1 st. at the beginning and end of every other row until 4 sts. remain. Bind off.

Finishing, see page 46. Work 2 rows S. C. around tie and front opening, working in back loop of sts. Face fronts with 1¼ inch matching grosgrain ribbon. Sew tie to neck as illustrated.

**SKIRT:** Follow chart. When work measures 4 inches from start, decrease as follows: \* K. 2 tog., K. 39, repeat from \* around row. Continue to decrease in this manner at points indicated on chart by number of sts. remaining after each decreasing round (there will be 1 st. less between the K. 2 tog., each decreasing round—10 sts. decreased). For finishing and casing for elastic, see page 46.





BROOKVILLE SKIRT

- 240 STS.
- 270 STS.
- 280 STS.
- 290 STS.
- 300 STS.
- 310 STS.
- 320 STS.
- 330 STS.
- 340 STS.
- 350 STS.
- 360 STS.
- 370 STS.
- 380 STS.
- 390 STS.
- 400 STS.

CAST ON: 410 STS.

# Camille

No. 205  
1 PIECE WOOLGORA  
DRESS AND BOLERO

Size 16

1 Pr. No. 3 M. M. Needles—14 inch  
—for blouse, belt and bolero  
Scale: 8½ sts. to 1 inch  
12 rows to 1 inch

1 No. 2 Steel Circular Needle—29 inch  
—for skirt  
Scale: 8½ sts. to 1 inch

1 No. 2 Steel Crochet Hook

MINERVA WOOLGORA

Dress—Sky Blue No. 497..... 22 Balls  
Bolero and Belt—

Rose Red No. 495..... 8 Balls

Total ..... 30 Balls

Chart symbols explained on page 45.

The entire dress and bolero are worked in Stockinette St. with the scalloped edge crocheted after the garment is completed.

**BLOUSE:** Follow chart for Front, Back and Sleeves.

Finishing, see page 46. Fold pleats in sleeves, as indicated on chart by dotted lines. Work 2 rows S. C. around all edges. Turn back and stitch crocheted edges of neck and shoulder openings and sew 4 inch slide fasteners in shoulders.

**SKIRT:** Follow chart. When work measures 5 inches from start, decrease as follows: \* K. 2 tog., K. 37, repeat from \* around row (380 sts. remaining). Work 3 inches even and then decrease as follows: \* K. 2 tog., K. 36, repeat from \* around row (10 sts. decreased in each decreasing round). Continue decreasing in this manner at points indicated on chart by number of sts. remaining after each decreasing round. There will be 1 st. less between the K. 2 tog., each decreasing round.

Finishing, see page 46. Join blouse and skirt and work casing for elastic (see page 46).

**BOLERO:** Follow chart for Right Front.

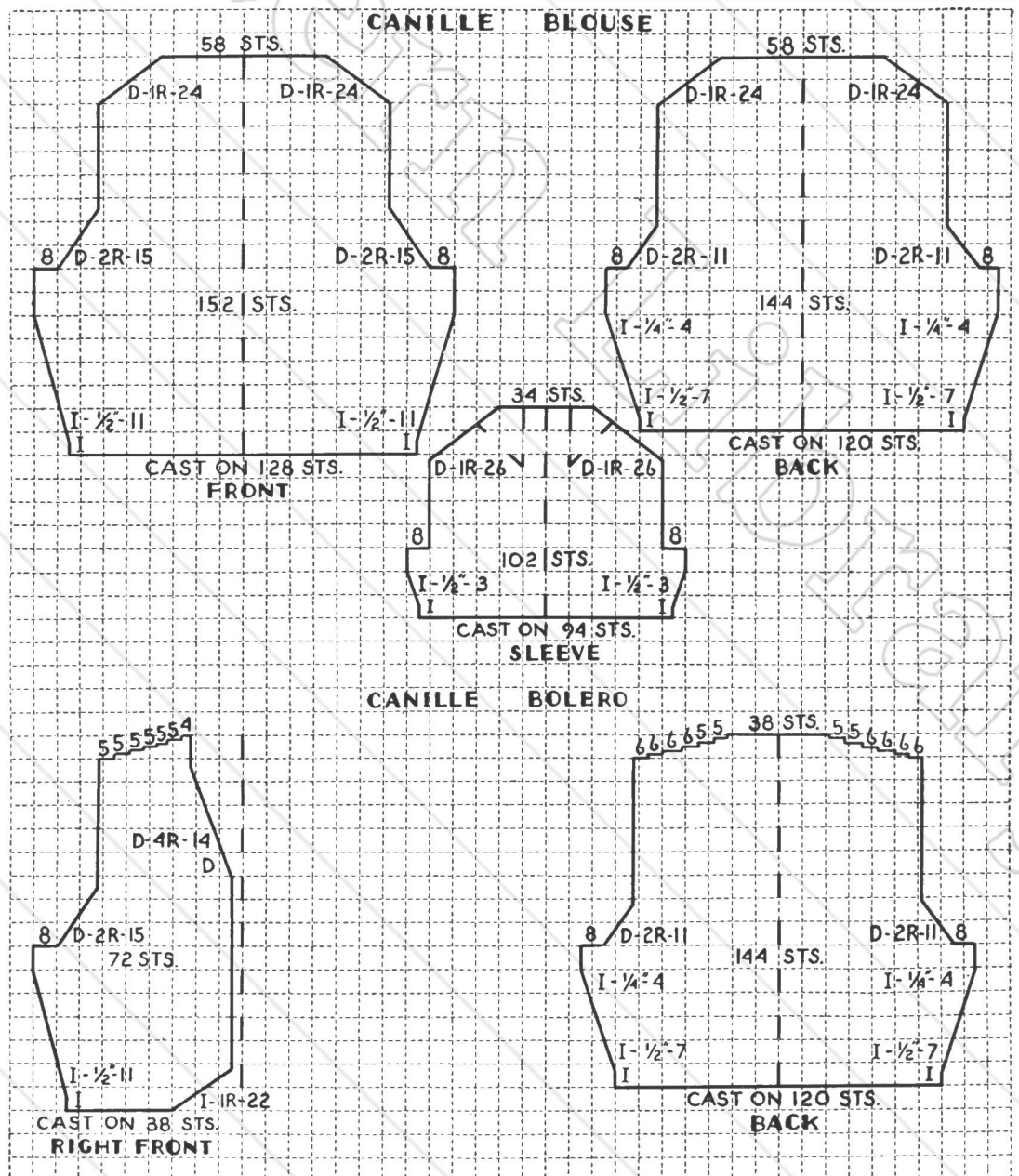
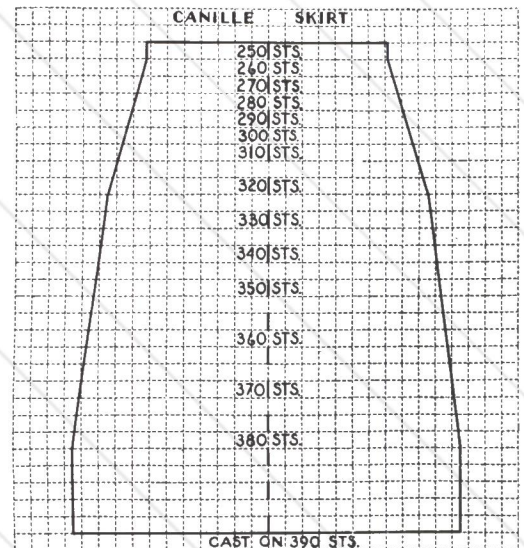
Work Left Front to correspond.

Follow chart for Back.

Cast on 34 sts. for Belt and work even in Stockinette St. for 1 inch. Decrease 1 st. each side, then decrease 1 st. each side every 2 inches, 3 times more (26 sts.). Work even for 26 inches, increase 1 st. each side. Increase 1 st. each side every 2 inches, 3 times more. Work 1 inch even. Bind off.

Finishing, see page 46. Work 1 row S. C. on belt and around all edges of bolero (rounding corners). Work scalloped edge around

neck, down fronts and around bottom of bolero and around belt as follows: Attach yarn in S. C., \* Ch. 3, 1 D. C. in same S. C. at start, 1 D. C. in each of the next 3 S. C., Ch. 3, 1 S. C. in same st. as last D. C., 1 S. C. in next st., repeat from \*. Line bolero and face belt with taffeta in color matching dress.





*Canille. Woolgora is an exclusive Minerva Yarn of rabbit's hair and the finest worsted. It has a fascinating softness and a stylish luzziness. Perhaps all of these features explain why its sales have exceeded our wildest dreams.*



# Warrenton

No. 206

## 3 PIECE FEATHERDOWN SUIT

Size 16

- 1 Pr. No. 1 Steel Needles—12 inch for blouse and jacket
- Stockinette St. Scale: 9 sts. to 1 inch  
13 rows to 1 inch
- Moss St. Scale: 9 sts. to 1 inch  
15 rows to 1 inch
- 1 No. 1 Steel Circular Needle—29 inch—for skirt
- Scale: 9 sts. to 1 inch
- 1 No. 3 Steel Crochet Hook

## MINERVA FEATHERDOWN

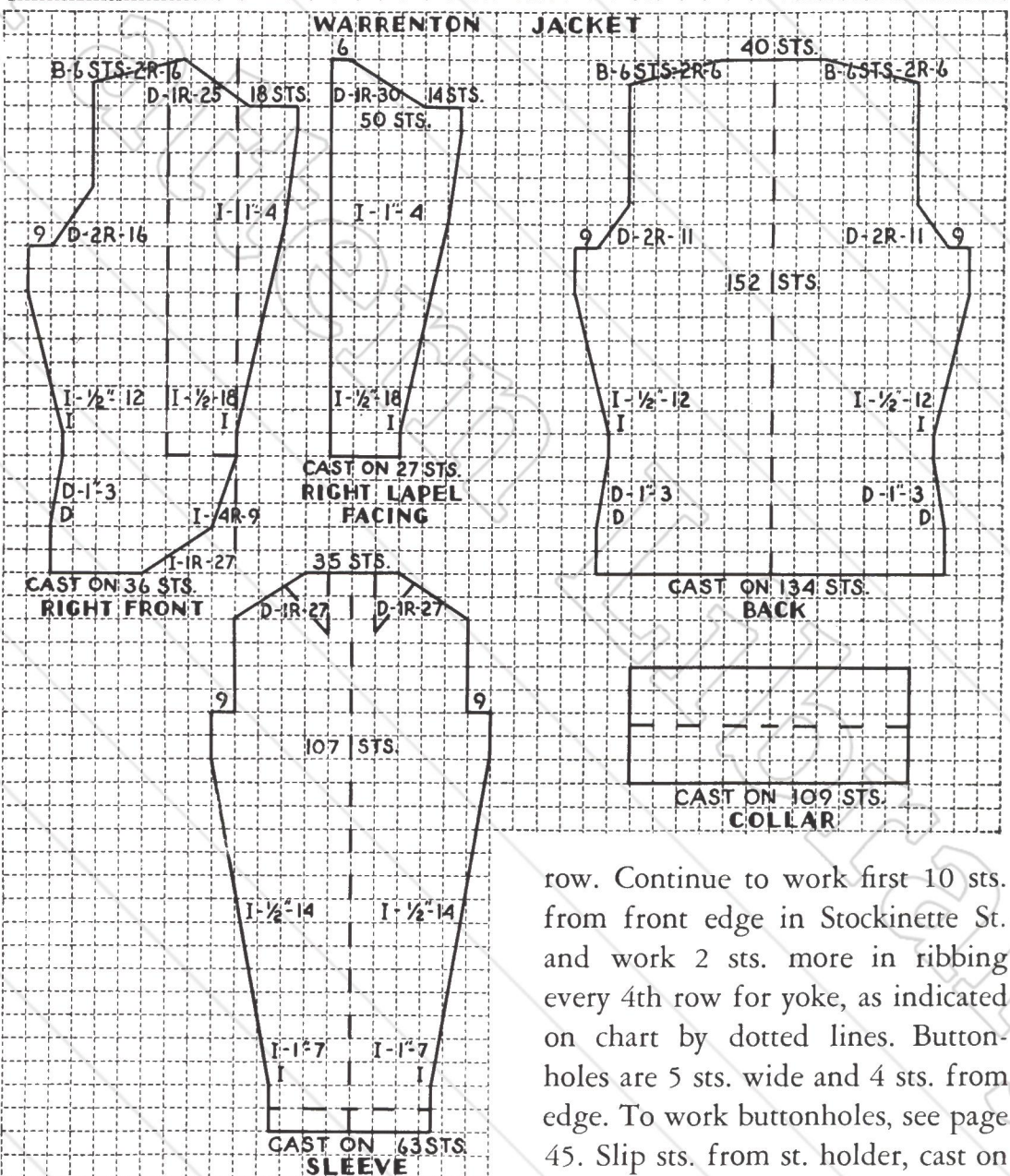
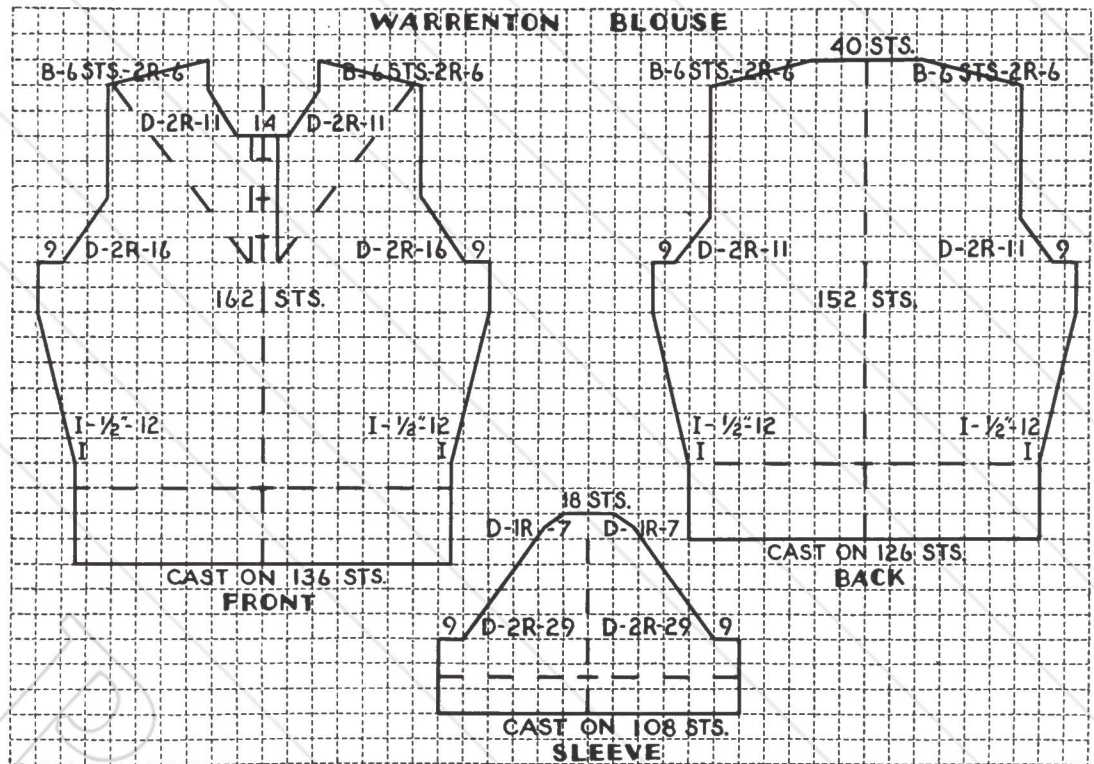
- Jacket—Chestnut No. 1065.... 9 Balls
- Blouse and Trim on Skirt—  
Natural No. 1066..... 7 Balls
- Skirt—Sahara Brown No. 1067 8 Balls

Total ..... 24 Balls

Chart symbols explained on page 45.

The Natural blouse is worked in Stockinette St. with borders and yoke (indicated on charts by dotted lines) worked in K. 1, P. 1, ribbing. The Sahara Brown skirt is worked in Stockinette St. with a Ch. St. stripes of Natural worked after the garment is completed. The Chestnut jacket is worked in Stockinette St. with collar, lapels and 1 inch band at bottom of sleeves worked in Moss St.

**BLOUSE:** Follow chart for Front.



After binding off sts. at underarm, work over 67 sts. (left front) and place on a st. holder. On remaining sts. work right shoulder as follows: K. 10, P. 1, K. to end of

row. Continue to work first 10 sts. from front edge in Stockinette St. and work 2 sts. more in ribbing every 4th row for yoke, as indicated on chart by dotted lines. Buttonholes are 5 sts. wide and 4 sts. from edge. To work buttonholes, see page 45. Slip sts. from st. holder, cast on 10 sts. for placket and work left shoulder to correspond, omitting buttonholes.

Follow charts for Back and Sleeves.

Finishing, see page 46. Pick up 146

sts. around neck and work first 10 sts. from front edges in Stockinette St. and remaining sts. in ribbing for 1 inch, working a buttonhole 1/2 inch from start.

**SKIRT:** (The working scale is 9 sts. to 1 inch. The skirt has been figured with 23 sts. less because you will have 23 Ch. St. stripes. The skirt chart is the size of the finished skirt.) Follow chart. When work measures 5 inches from start, decrease as follows: K. 2 tog., \* K. 37, K. 2 tog., repeat from \* around row ending K. 38 (381 sts. remaining on needle). Work 3 inches even, then work second decrease as follows: K. 2 tog., \* K. 36, K. 2 tog., repeat from \* around row, ending K. 37. Continue to decrease in this manner at points indicated on chart by number of sts. remaining after each decreasing round and having 1 st. less between the K. 2 tog. each decreasing round. (10 sts. decreased each decreasing round.)

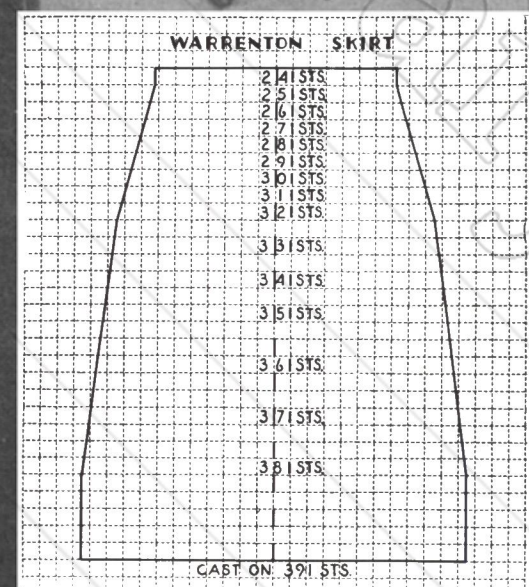
For finishing and casing for elastic, see page 46. Starting at bottom, with Natural, work 23 Ch. St. stripes as follows: \* work a Ch. St. stripe, skip 15 sts. and repeat from \* around skirt. To work Ch. St. stripes, see page 45.

**JACKET:** Follow chart for Right Front.

Work Left Front to correspond.

Follow charts for Back, Sleeves, Moss St. Collar and 2 Moss St. Lapel Facings. Work first inch on sleeves in Moss St.

Finishing, see page 46. Sew lapels to fronts as indicated on chart by dotted lines. Fold collar in half and sew in place. Fold pleats in sleeves as indicated on charts by dotted lines. Work 1 row D. C. loosely on bottom and on rounded edge and turn back for hem. Fasten with a hook and eye at waist.



# Delray

No. 207  
1 PIECE MELLOSHOEN  
DRESS

Size 16

1 Pr. No. 3 M. M. Needles—14 inch  
Scale: 7 sts. to 1 inch (3½  
patterns to 1 inch)—  
blocked

1 No. 6 Steel Crochet Hook

MINERVA MELLOSHOEN  
White No. 1930..... 4 Skeins  
Chart symbols explained on page 45.

The entire dress is worked in pattern, finished with 4 rows of S. C. on all edges and sewn together with ½ inch seams (indicated on charts by dotted lines).

**PATTERN:** Multiple of 2 sts.

Row 1—Slip 1, \* K. 1, P. 1, repeat from \* across row, ending K. 1.

Row 2—Slip 1, \* K. 2 tog., but do not slip the sts. off the needle, yarn forward and P. 2 sts. tog., yarn back, repeat from \* across row, ending K. 1.

Row 3—Slip 1, \* in each group of the 2 sts., P. the first st., K. the 2nd st., repeat from \* across row, ending P. 1.

Repeat Rows 2 and 3 for pattern.

**BLOUSE:** Follow chart for Right Front.

Work Left Front to correspond.

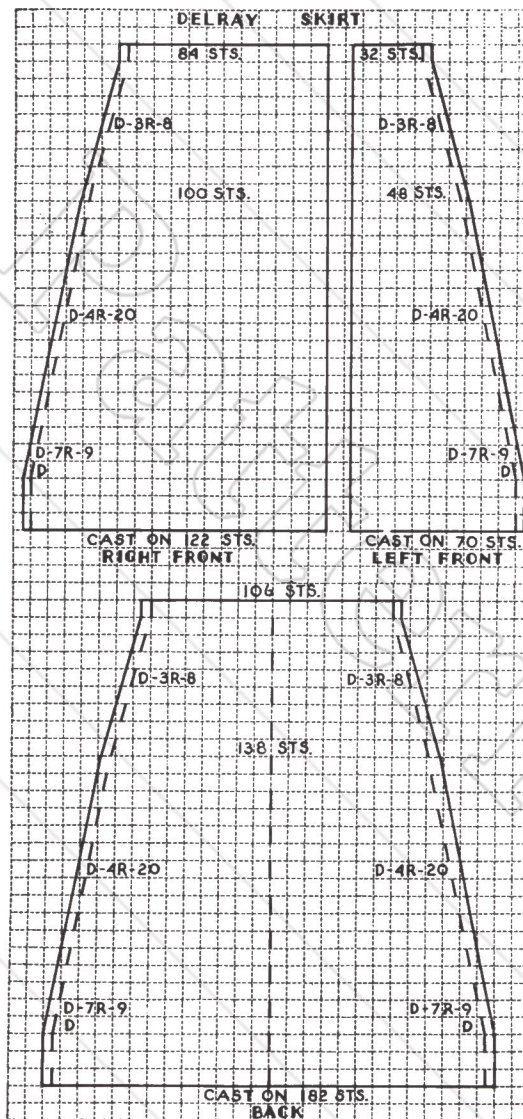
Follow charts for Back, Sleeves, Collar and 2 Pocket Tabs.

Finishing, see page 46. Work 4 rows S. C. around all edges of blouse, working 8 loops for buttons on last row on right front. Work 4 rows S. C. on pocket tabs as indicated on chart by dotted lines. Sew decreased edge of pocket tab to left front at underarm, 1 inch from crocheted edge. Sew the other tab 1¼ inches above.

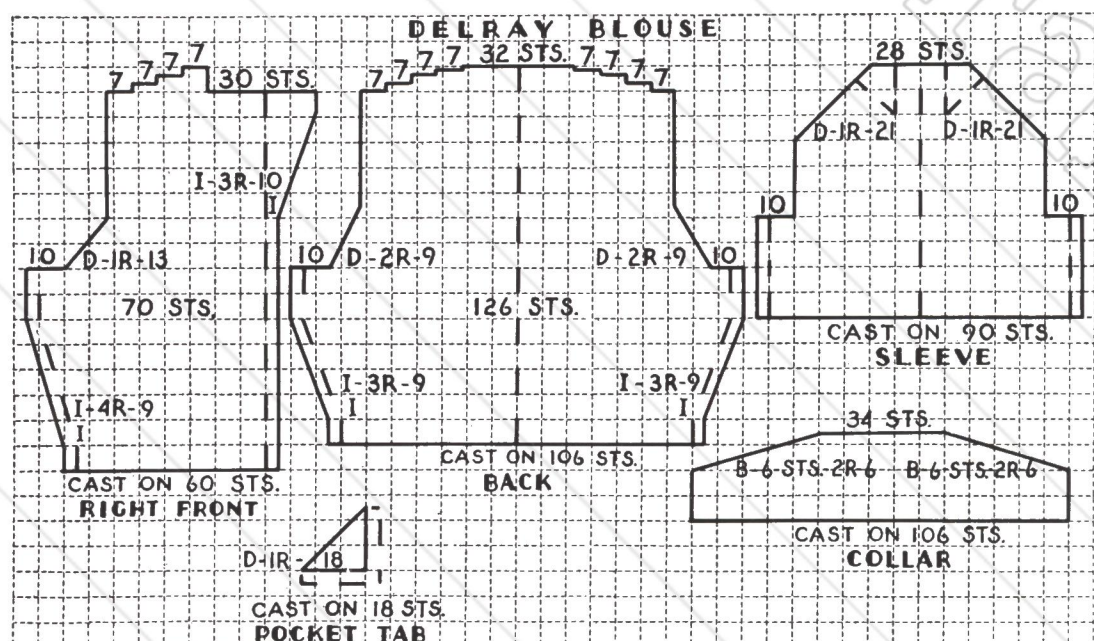
**SKIRT:** Follow charts for Right Front, Left Front and Back.

Finishing, see page 46. Work 4 rows S. C. on all edges, working 19 loops for buttons on last row on right front. Join blouse and skirt and work casing for elastic (see page 46).

**DAYTONA** Charts and Instructions on page 40.



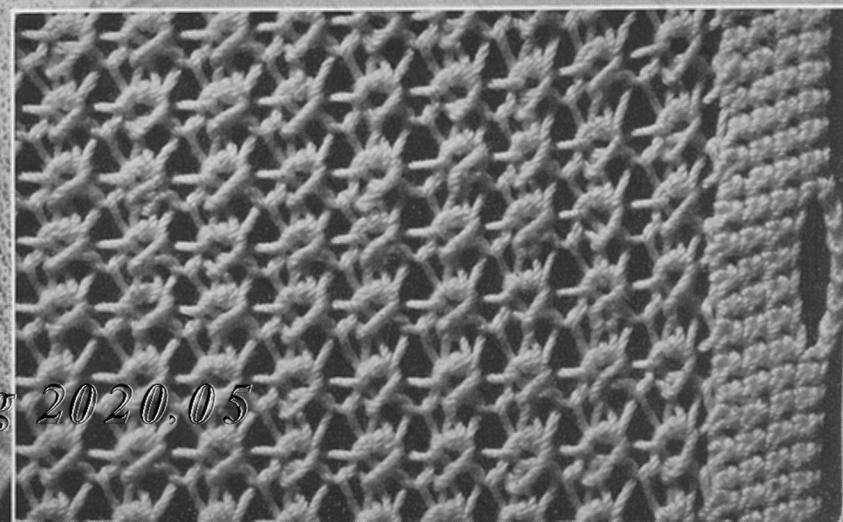
*These two garments have been chosen as our first showings in the cotton field. We believe that both in style and in cool comfort they will be the answer to the thousands of requests received for Minerva cottons. And at the same time be worthy members of that large Minerva family which all expert buyers call the really quality line of the Art Needle World.*



Daytona



Debray





# Elkridge

No. 209

## 2 PIECE VELVEEN DRESS

Size 16

1 Pr. No. 2 Steel Needles—12 inch  
—for blouse

Scale: 8 sts. to 1 inch  
13 rows to 1 inch

1 No. 2 Steel Circular Needle—29 inch  
—for skirt

Scale: 8 sts. to 1 inch

No. 2 Steel Crochet Hook

### MINERVA VELVEEN

Blouse—Turquoise No. 1143 5 Balls  
Trim and Skirt—Montella

Brown No. 1134..... 7 Balls

Total ..... 12 Balls

(Chart on page 44)

Chart symbols explained on page 45.

The Turquoise blouse is worked in pattern with  $\frac{3}{4}$  inch hems (indicated on charts by dotted lines) at the bottom of the blouse and sleeves. The Montella Brown tie and skirt are worked in Stockinette St.

**PATTERN:** With Turquoise, work in Stockinette St. for 8 rows.

Row 9—Join Montella Brown and K.

Row 10—With Montella Brown, K. Break yarn.

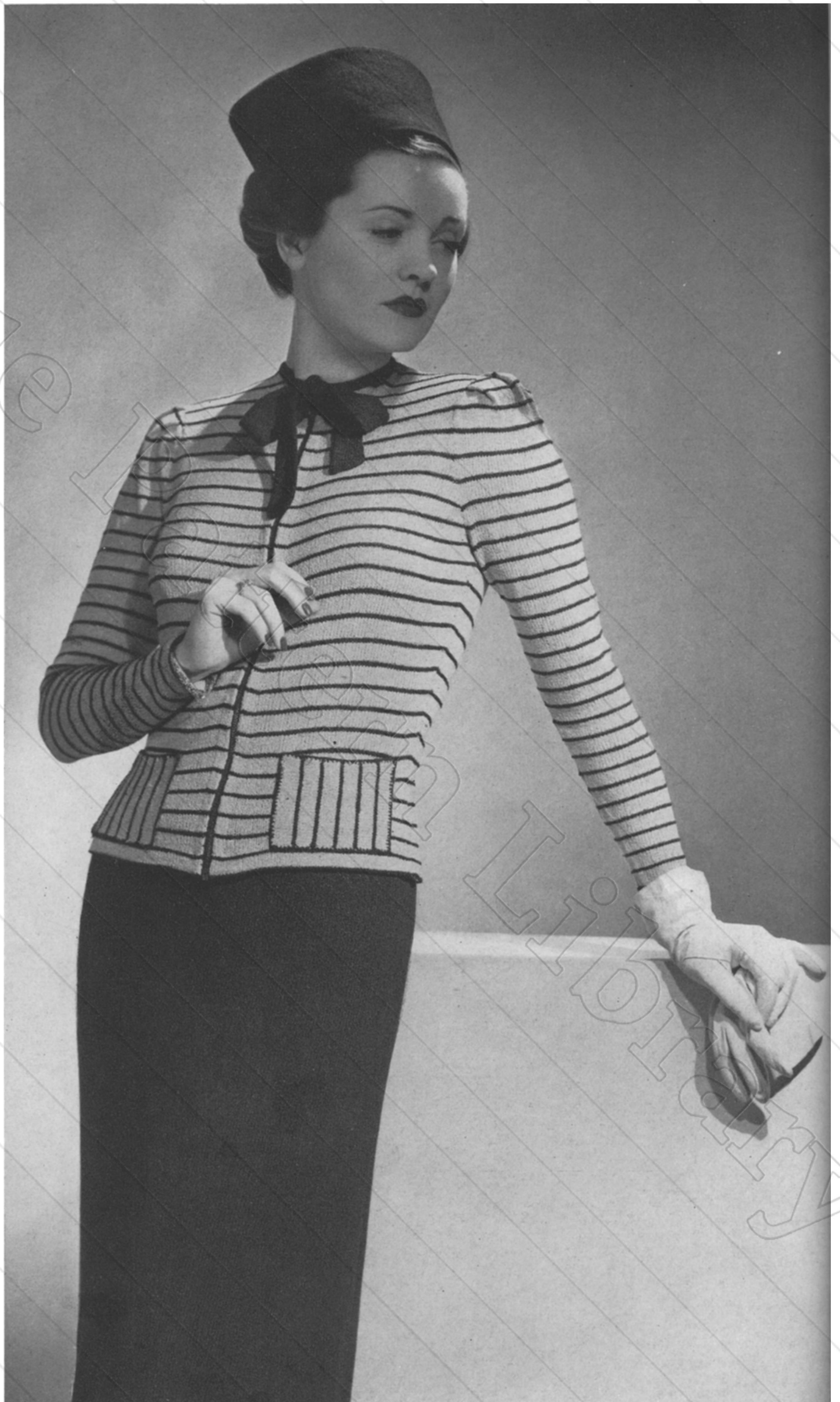
Repeat these 10 rows for pattern.

**BLOUSE:** Follow chart for Right Front.

Work Left Front to correspond.

Follow charts for Back, Sleeves and 2 Pockets. On pocket, work in pattern for 58 rows, ending with 8 rows of Stockinette St.

(Continued on page 44.)





**No. 210**  
**2 PIECE SHETLAND FLOSS DRESS**

Size 16

- 1 Pr. No. 2 Steel Needles—12 inch—for blouse
- Scale: 8 sts. to 1 inch  
10 rows to 1 inch
- 1 No. 2 Steel Circular Needle—29 inch—for skirt
- Scale: 8 sts. to 1 inch
- 1 No. 2 Steel Crochet Hook

**MINERVA SHETLAND FLOSS**

Blouse—Navy No. 570.....	11 Balls
Skirt—Navy No. 570.....	9 Balls
Trim—Jade No. 554.....	1 Ball
Cherry No. 580.....	1 Ball
Canary No. 599.....	1 Ball
Total .....	23 Balls

Chart symbols explained on page 45.

(The dress may also be made of Minerva Heatherdown, using 22 balls of Indigo Blue No. 1514 and 1 ball of each of the trim colors.)

The entire dress is worked in Stockinette St. with 2 rows each of 3 colors crocheted on all edges of blouse.

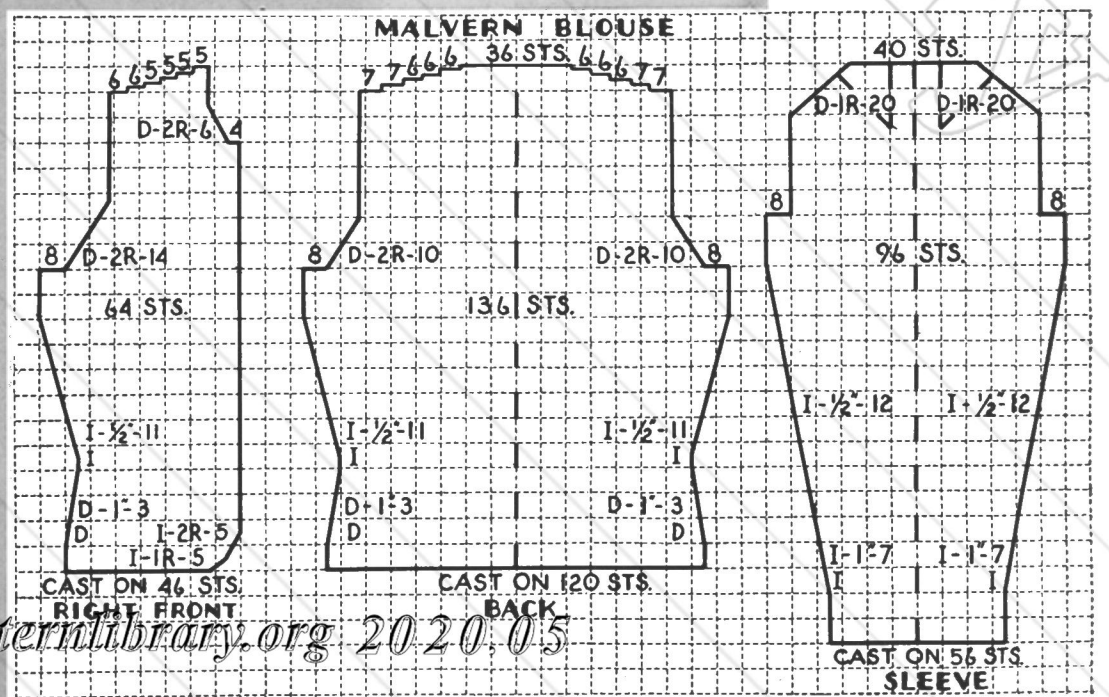
**BLOUSE:** Follow chart for Right Front.

Work Left Front to correspond.

Follow charts for Back and Sleeves.

Finishing, see page 46. Fold pleats at top of sleeves, as indicated on chart by dotted lines. Work 2 rows S. C. around all edges with Jade, Canary and Cherry, working in back loop of sts. On last row, work 33 loops for buttons, starting 2 inches from bottom of knitting.

**SKIRT:** Follow Standard Skirt Chart No. 1 on page 45. For finishing and casing for elastic, see page 46.



# Paddington

No. 211  
2 PIECE  
HEATHERDOWN DRESS

Size 16

- 1 Pr. No. 3 1/2 M. M. Needles—14 inch  
—for blouse
- Scale: 7 sts. to 1 inch  
10 rows to 1 inch
- 1 No. 3 Steel Circular Needle—29 inch  
—for skirt
- Scale: 7 sts. to 1 inch
- 1 No. 2 Steel Crochet Hook
- Scale: 7 S. C. to 1 inch

MINERVA HEATHERDOWN  
Zuider Zee No. 1511 ..... 17 Balls  
Chart symbols explained on page 45.

The blouse is worked in Stockinette St. with borders of pattern (indicated on charts by dotted lines). The skirt is worked with 8 Garter St. stripes.

**PATTERN:** Multiple of 4 sts. plus 2.

Row 1—K.

Row 2—\* P. 2, K. 2, repeat from \* across row, ending P. 2.

Repeat these 2 rows for pattern.

**BLOUSE:** Follow chart for Front, working in pattern. When work measures 6 inches from start (after 2nd increase), work over 52 sts., bind off 6 sts. and on remaining 52 sts. work right front, working 4 sts. more from center in Stockinette St. every 2nd row until all sts. are worked in Stockinette St. When work measures 14 1/2 inches from start, work over 17 sts. from front edge, work next 18 sts. in pattern and continue across row. Continue to work these 18 sts. in pattern for remainder of front. Reverse sts. of lapel, starting with 3 sts. and working 1 st. more every 1/2 inch until all sts. of lapel are worked with the P. side on the right side of work.

Work Left Front to correspond.

Follow chart for Back, working first 7 1/2 inches in pattern.

Follow chart for Sleeves.

For crocheted Cuff, Ch. 8 and work back and forth in S. C. for 11 inches.

Finishing, see page 46. Work 1 inch band of S. C. on front openings, around lapels (mitering corners) and around neck, working 3 buttonholes on right front (indicated on chart) 1/2 inch from start. Sew cuffs to bottom of sleeves holding sleeves in to 10 inches and having cuffs overlapping 1 inch.

**SKIRT:** Follow chart, working as follows:

Row 1—K.

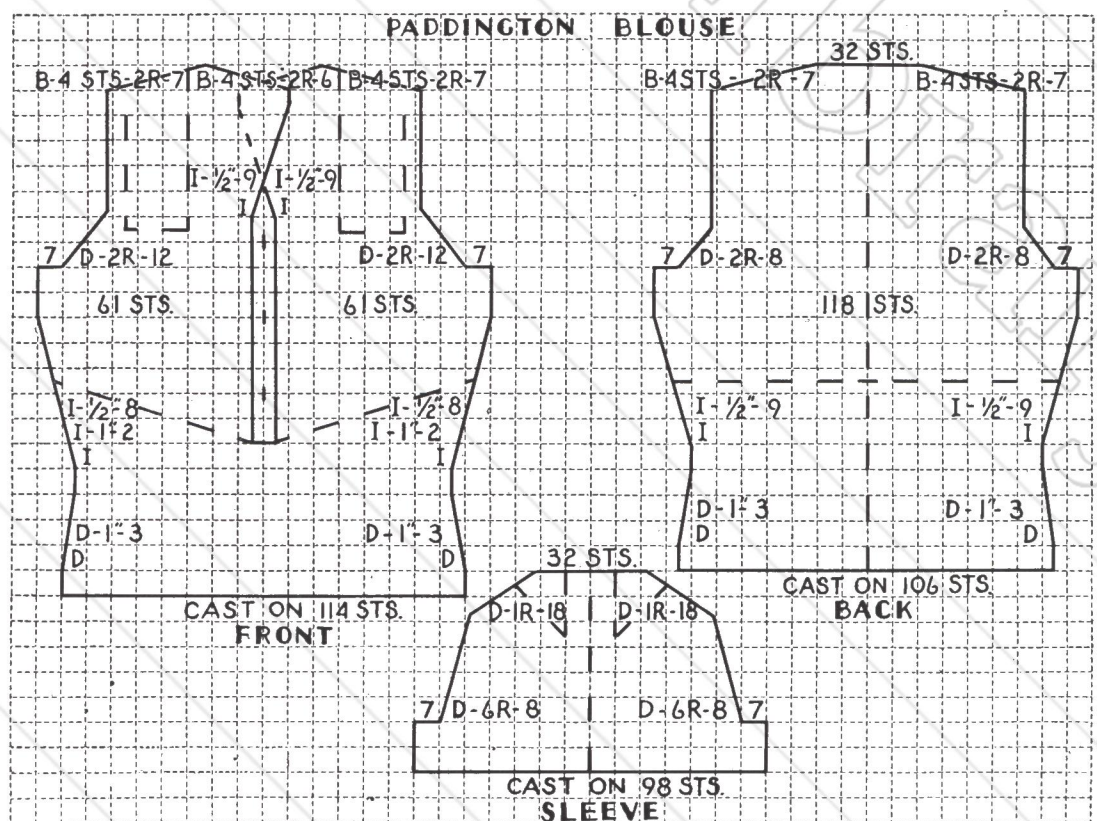
Row 2—\* K. 34, P. 6, repeat from \* around row. (There will be 1 st. less in each of the K. panels after each decreasing round).

Repeat these 2 rows.

When work measures 4 inches from start, decrease 1 st. in the center of each K. panel (8 sts. decreased—312 sts. remaining). Continue to decrease in each K. panel

at points indicated on chart by number of sts. remaining after each decreasing round.

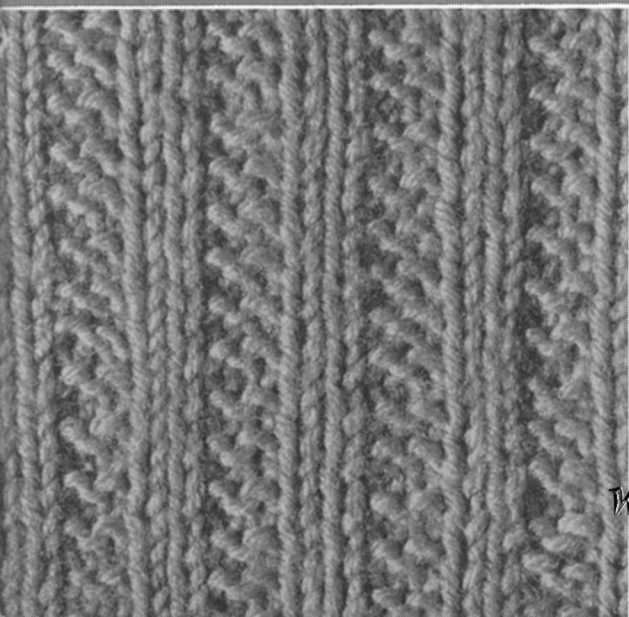
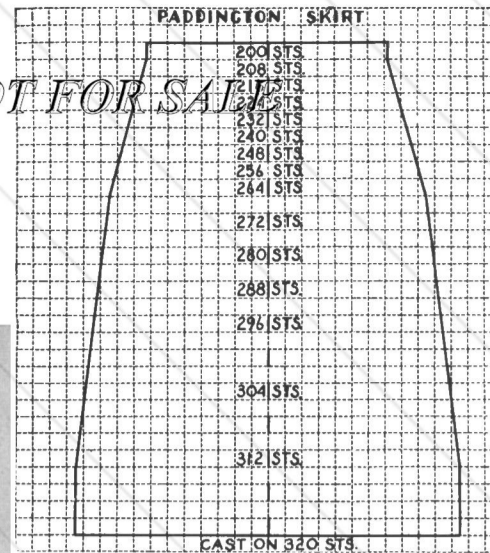
For finishing and casing for elastic, see page 46.



PADDINGTON

*Creative Commons 4.0 NC SA BY FREE DISTRIBUTION ONLY - NOT FOR SALE*

Minerva Heatherdown is colored in the soft, rich shades of the Dutch School of Painting. Every shade is as enduring as those famous colors that the old masters used so skillfully. The canvases of that period are priceless works of art and the people who painted on them have become immortal. ♦ ♦ ♦ We have selected and named the colors of Minerva Heatherdown in honor of peaceful Netherlands' little Queen-to-be, and we present them to the American woman with every confidence in their becomingness and in their beauty.



# Nantasket

No. 212

2 PIECE MODEEN SUIT

Size 16

1 Pr. No. 3 M. M. Needles—14 inch  
—for blouse

Scale: 8 sts. to 1 inch  
11 rows to 1 inch

1 No. 2 Steel Circular Needle—29 inch  
—for skirt

Scale: 8 sts. to 1 inch

1 No. 2 Steel Crochet Hook

MINERVA MODEEN

Blouse—Peach Glow No. 1602 11 Balls

Skirt & Trim—Black No. 1640 12 Balls

Total ..... 23 Balls

(The dress may also be made of Minerva Heatherdown, using the same quantities of Beatrix Pink No. 1508 and Black No. 1510)

Chart symbols explained on page 45.

The entire Peach Glow blouse is worked in pattern and the Black skirt is worked in Stockinette St.

**PATTERN:** Multiple of 6 sts. plus 1.

Row 1—K.

Row 2—P.

Row 3—K. 3, \* P. 1, K. 5, repeat from \* across row, ending K. 3 instead of K. 5.

Row 4—P. 3, \* K. 1, P. 5, repeat from \* across row, ending P. 3 instead of P. 5.

Row 5—K. 2, \* P. 1, K. 1, P. 1, K. 3, repeat from \* across row, ending K. 2 instead of K. 3.

Row 6—P. 2, \* K. 1, P. 1, K. 1, P. 3, repeat from \* across row, ending P. 2 instead of P. 3.

Row 7—K. 1, \* P. 1, K. 1, repeat from \* across row.

Row 8—P. 1, \* K. 1, P. 1, repeat from \* across row.

Row 9—Same as Row 5.

Row 10—Same as Row 6.

Row 11—Same as Row 3.

Row 12—Same as Row 4.

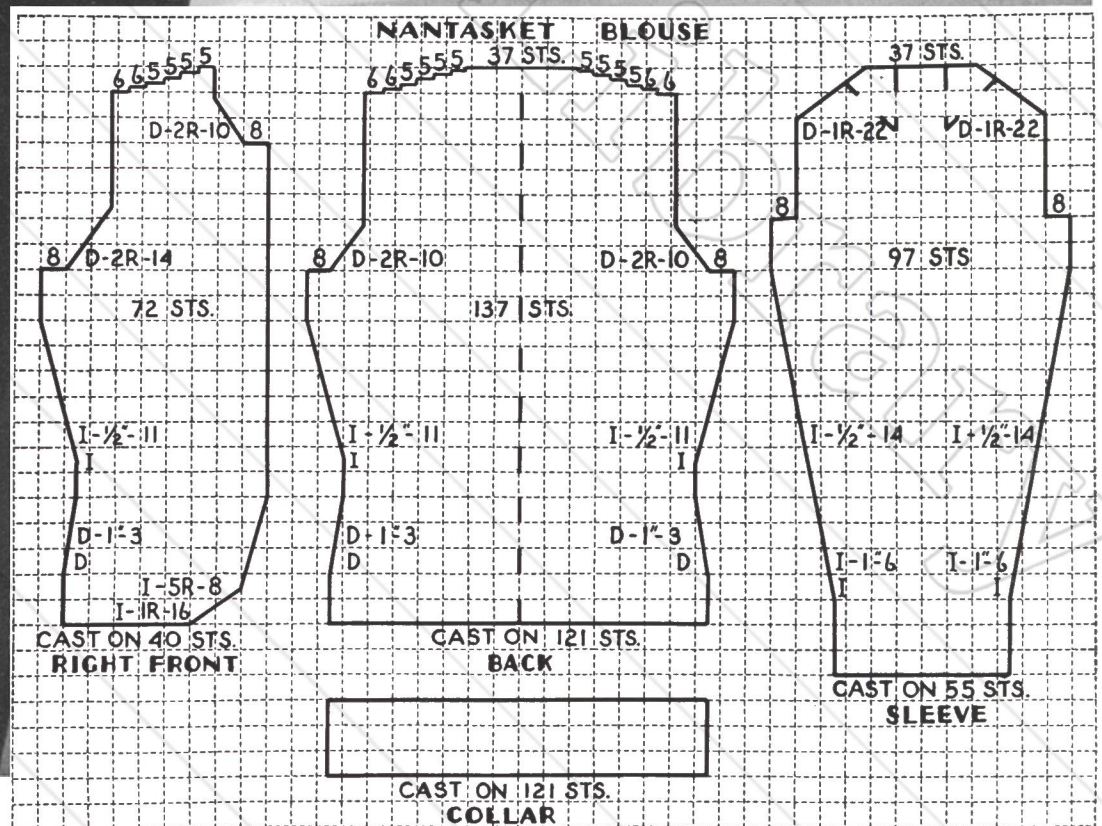
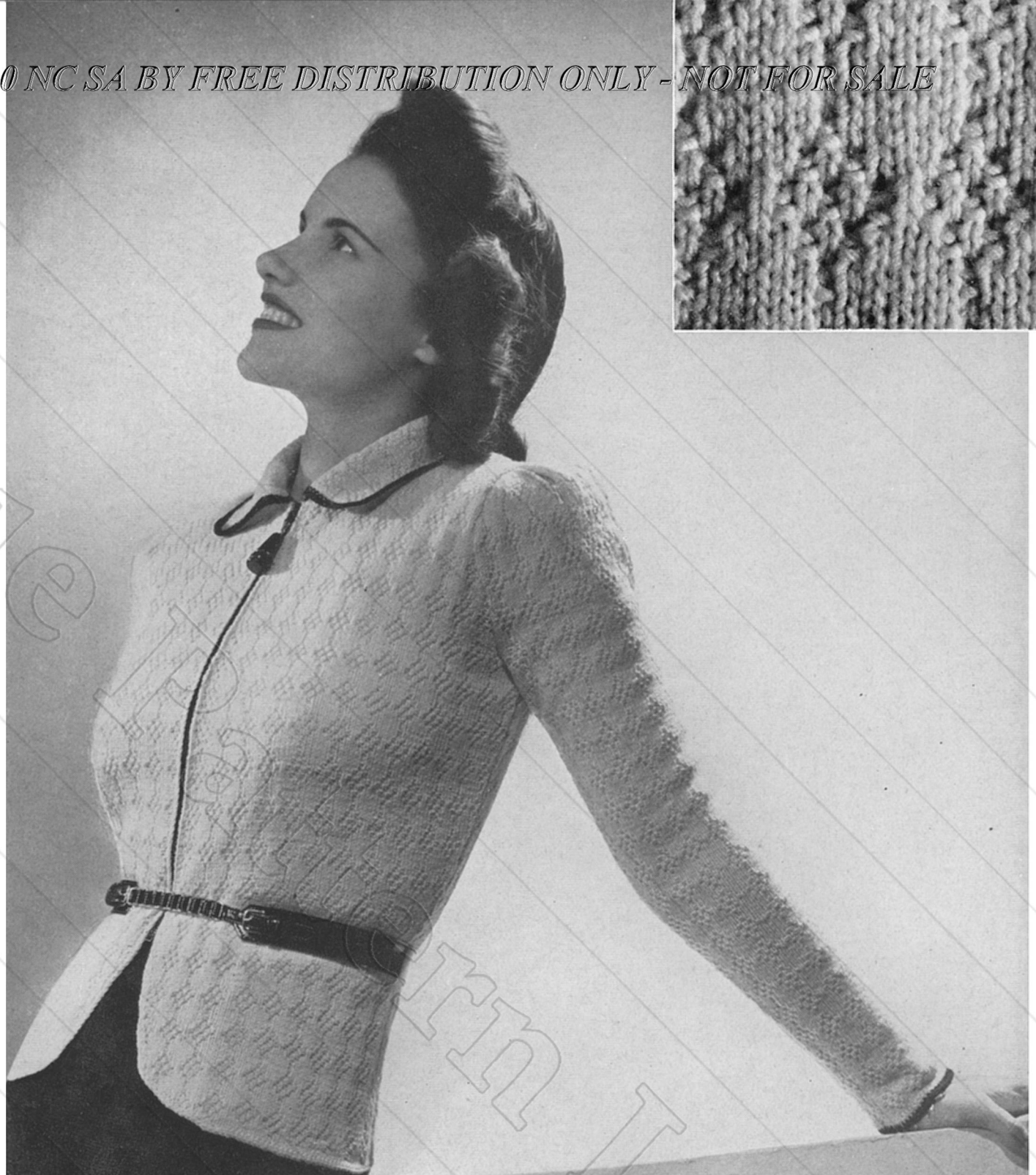
Repeat these 12 rows for pattern.

**BLOUSE:** Follow charts for Back, Sleeves, Collar and Right Front.

Work Left Front to correspond.

Finishing, see page 46. Fold pleats in sleeves, as indicated on chart by dotted lines. Sew collar in place, easing to neck. With Peach Glow,

work 1 row S. C. around all edges then with Black, work 2 rows S. C. around collar and bottom of sleeves.



Sew 14 inch separating slide fastener in place.

**SKIRT:** Follow Standard Skirt

Chart No. 1 on page 45. For finishing and casing for elastic, see page 46.

# Fenwick

No. 213

## 2 PIECE MODEEN AND VELVEEN SUIT

Size 16

- 1 Pr. No. 2 Steel Needles—12 inch  
—for jacket  
Scale: 8 sts. to 1 inch  
16 rows to 1 inch
- 1 No. 2 Steel Circular Needle—29 inch  
—for skirt  
Scale: 8 sts. to 1 inch
- 1 No. 2 Steel Crochet Hook

### MINERVA MODEEN

Jacket—Dark Navy No. 1613 8 Balls  
Skirt—Dark Navy No. 1613.... 10 Balls

Total ..... 18 Balls

### MINERVA VELVEEN

Jacket—Coronation Gold  
No. 1158 ..... 4 Balls

(Chart on page 22.)

Chart symbols explained on page 45.

The entire jacket is worked in pattern, with  $\frac{1}{2}$  inch seam and hem allowance, indicated on charts by dotted lines. The Dark Navy Modeen skirt is worked in Stockinette St.

**PATTERN:** Multiple of 2 sts.

Row 1—With Dark Navy, \* K. 1, slip 1, repeat from \* across row.

Row 2—With Dark Navy, K. all sts.

Row 3—With Gold, \* slip 1, K. 1, repeat from \* across row.

Row 4—With Gold, K. all sts.

Repeat these 4 rows for pattern.

**JACKET:** Follow charts for Right Front and 2 Dark Navy Pocket Facings. Pocket opening is 32 sts. wide and 32 sts. from front edge. To work knit-in pockets, see page 45. Buttonholes are 6 sts. wide and 10 sts. from front edge. To work buttonholes, see page 45.

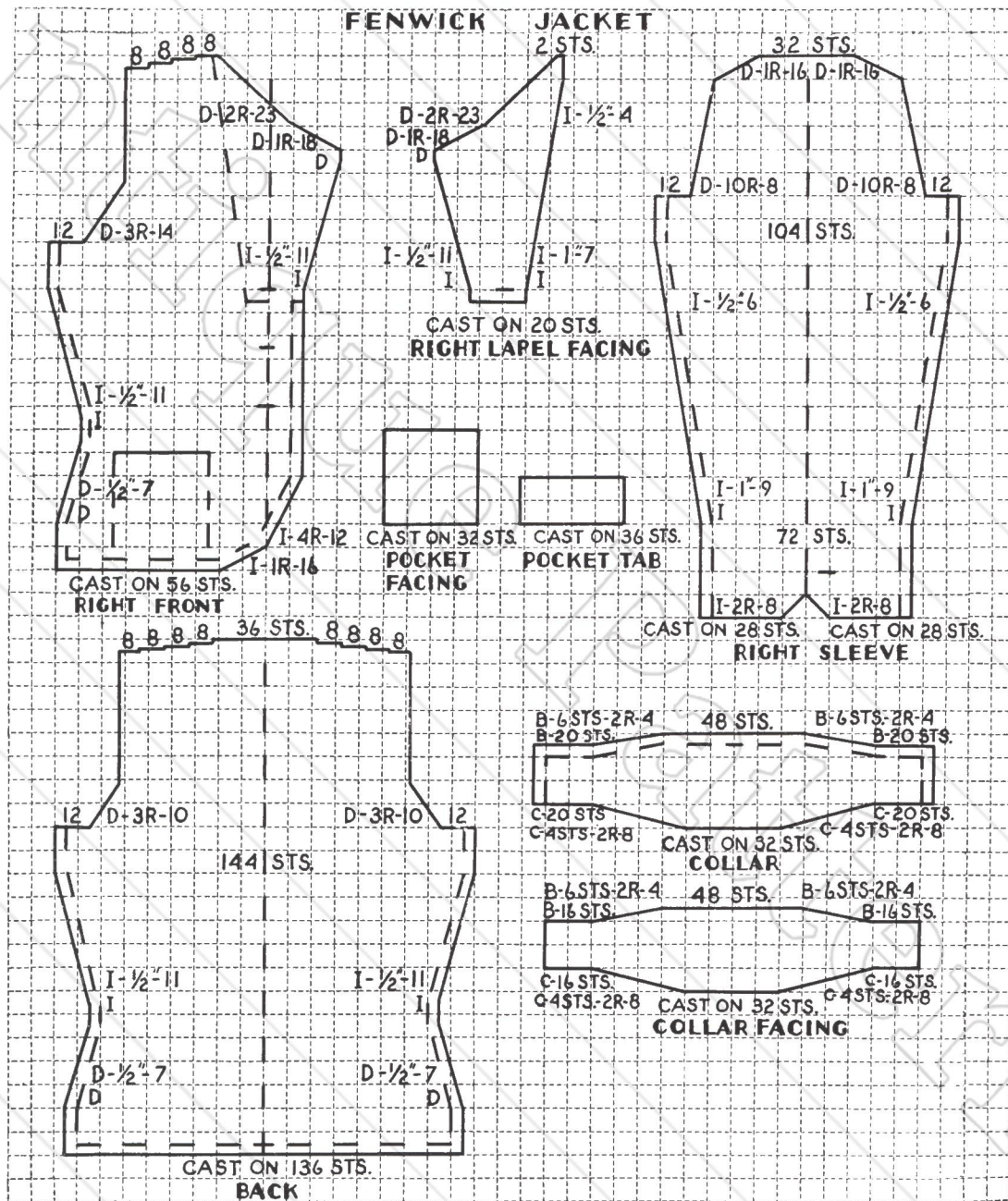
Work Left Front to correspond, omitting buttonholes.

Follow chart for Right Lapel Fac-

(Continued on next page.)

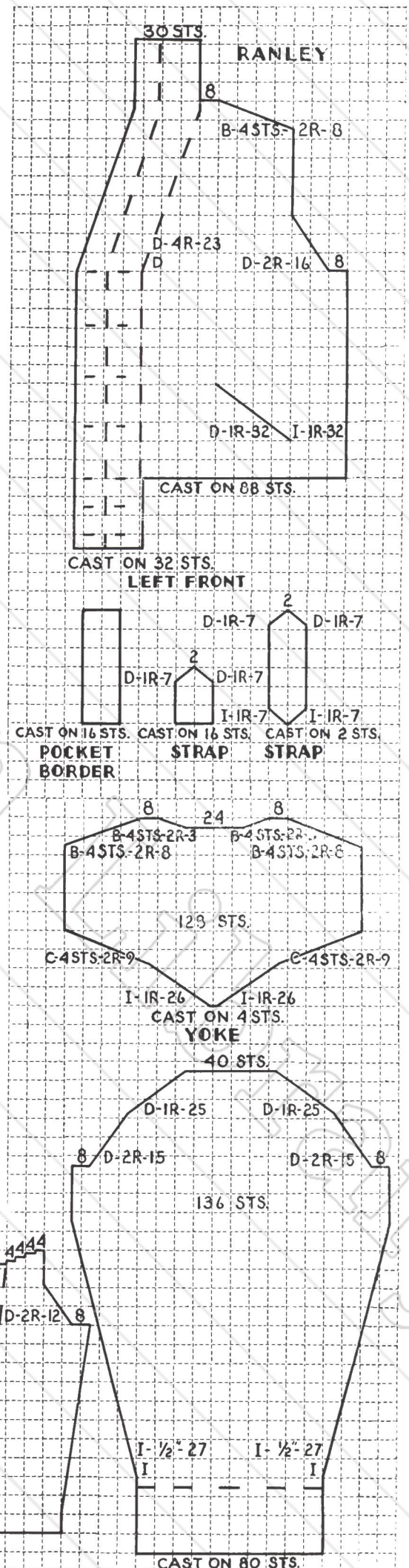


FENWICK CHART



RANLEY CHART

(Illustration and instructions on opposite page)

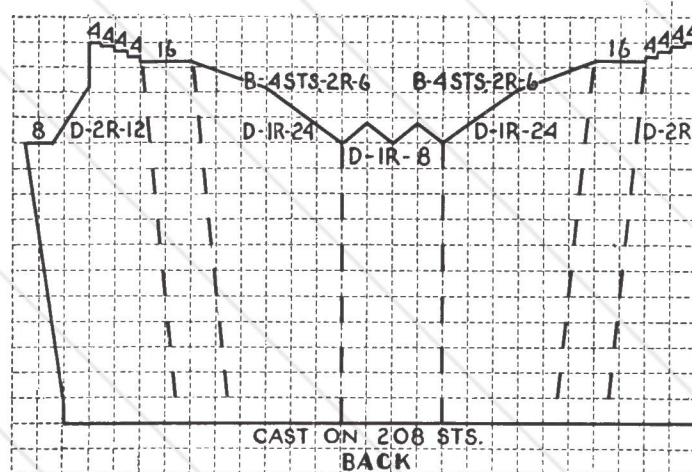


(Continued from previous page.)  
 ing. Buttonhole is 6 sts. wide and 4 sts. from edge.  
 Work Left Lapel Facing to correspond, omitting buttonhole.  
 Follow charts for Back, Collar, Collar Facing and 2 Pocket Tabs.  
 Follow chart for Right Sleeve. Work first 3 inches of sleeve in 2 sections. Buttonhole is 6 sts. wide and 4 sts. from edge. Join and continue according to chart.  
 Work Left Sleeve, having buttonhole in opposite section.  
 Finishing, see page 46. Sew sleeves in place, gathering fullness at top. Sew facings in place, as indicated on chart by dotted lines. Turn back 1/2 inch hems on bottom and front edges of jacket. Sew collar facing to collar and sew in place, having 32 cast on sts. at back of neck.

With Dark Navy, work 1 row S. C. around pocket tabs and sew tabs to jacket 1/2 inch above pocket opening. With Dark Navy, work 1 row D. C. loosely around sleeve openings and turn back for hem. Tape shoulders.

**SKIRT:** Follow Standard Skirt Chart No. 1 on p. 46. For finishing and casing for elastic, see p. 46.

RANLEY CHART



*Ranley*

(Chart on page 22)

No. 214

**MAN'S SPANISH  
WORSTED CARDIGAN**

Size 40

1 Pr. No. 1 Steel Needles—12 inch

Scale: 8 sts. to 1 inch

11 rows to 1 inch

Pattern Scale: 9 sts. to 1 inch

MINERVA SPANISH WORSTED  
Light Oxford No. 271..... 11 Balls

Chart symbols explained on page 45.

The cardigan is worked in Stockinette St. with cuffs (indicated on chart by dotted lines) worked in K. 1, P. 1, ribbing. The borders on fronts and on pockets are worked in pattern.

**PATTERN:** Multiple of 2 sts.

Row 1—K.

Row 2—P. 1, K. 1.

Repeat these 2 rows for pattern.

Follow chart for Left Front. Work first 18 sts. in pattern and last 14 sts. in Stockinette St. for facing. Buttonholes are 5 sts. wide and 10 sts. apart. To work buttonholes, see page 45.  $3\frac{3}{4}$  inches from start, bind off 2 sts. at inside edge, before casting on the 88 sts. Start pocket opening 24 sts. from side edge.

Work Right Front to correspond, omitting buttonholes.

Follow chart for Back. Increase 1 st. in the 33rd st. from each side edge, every inch, 12 times. The D-1R-8 at center back means to decrease 1 st. every row 8 times in four places to shape points.

Follow charts for Yoke, Sleeves, 2 Pocket Borders and 2 sets of Straps.

Waist-band: Cast on 288 sts. and work in Stockinette St. for 4 inches. Bind off.

Finishing, see page 46. Fold and sew inverted box pleat in center



back (indicated on chart by dotted lines). Fold and sew pleats at each side as indicated on chart by dotted lines. Turn under  $\frac{1}{4}$  inch on yoke and sew to back. Sew shoulder seams, sew sleeves in place. Sew underarm and sleeve seams. Turn back  $\frac{1}{4}$  inch on waist-band and sew to cardigan and front borders, easing extra fullness of fronts to fit waist-band. Turn back facings on fronts, matching double buttonholes and sew neck band to back of neck having seam at center back. Fold pocket borders in half and sew to pocket openings. Finish with 1 row of machine stitching at edge of back yoke, around arm hole and at top of waist-band. Line pockets, bind seams and face waist-band with lining silk or sateen. Stitch straps to waist-band at sides, 2 inches from bottom as illustrated. Fold loose ends of straps and sew edges together for  $2\frac{1}{2}$  inches from point.



# Kinross

No. 215  
2 PIECE SHETLAND  
FLOSS BOY'S SUIT

Size 4

1 Pr. No. 3 M. M. Needles—14 inch  
Garter St. Scale: 7 sts. to 1 inch  
13 rows to 1 inch

Stockinette St. Scale: 8 sts. to 1 inch  
10 rows to 1 inch

1 Tapestry Needle  
1 No. 2 Steel Crochet Hook.

## MINERVA SHETLAND FLOSS

Navy No. 570..... 6 Balls  
Trim—Scarlet No. 545..... 1 Ball  
White No. 510..... 1 Ball

Total ..... 8 Balls

Chart symbols explained on page 45.

The body of the sweater is worked in pattern with borders (indicated on charts by dotted lines) worked in K. 2, P. 2, ribbing. The vertical stripes are woven after the sweater is finished. The sleeves and pants are worked in Stockinette St. with 1 inch ribbing borders.

### PATTERN:

With Scarlet, K. 1 row, P. 1 row.  
Break yarn.

With Navy, K. 28 rows.

Repeat these 30 rows for back and front of sweater.

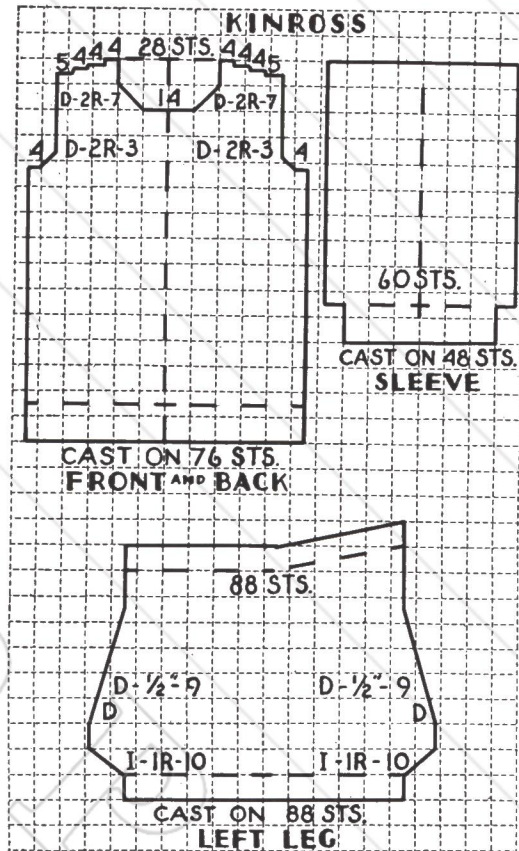
**SWEATER:** Follow chart for Front.

Follow chart for Back, omitting neck opening and binding off remaining 28 sts. for back of neck.

Follow chart for Sleeves. Work first half of ribbing with White and remainder of ribbing with Scarlet. After ribbing, change to Navy and increase to 60 sts. by increasing 1 st. in every 4th st. across row.

Finishing, see page 46.

Pick up 112 sts. around neck and work in ribbing for 1 inch, working first 1/2 inch with Scarlet and second 1/2 inch with White. Bind



off loosely in ribbing. With a double strand of Scarlet, weave 2 1/2 inch plaid on back and front as illustrated, weaving under 1 K. st. and over K. st. of next row.

**PANTS:** Follow chart for Left Leg. To shape back of pants, work as follows: K. 40, P. back, K. 32, P. back, K. 24, P. back, K. 16, P. back, K. 8, P. back, K. over all sts. and finish pants with 1 inch of ribbing.

Work Right Leg to correspond.

For finishing and casing for elastic, see page 46.



# Hansel & Gretel

No. 216  
MODEEN BROTHER OR  
SISTER SUIT

Size 4

1 Pr. No. 3½ M. M. Needles—10 inch  
—for sweater

Scale: 7 sts. to 1 inch  
11 rows to 1 inch

1 No. 3 Steel Circular Needle—16  
inch—for skirt

Scale: 7 sts. to 1 inch

1 No. 2 Steel Crochet Hook

MINERVA MODEEN

Sweater—Chamois Yellow

No. 1607 ..... 4 Balls

Skirt—Chamois Yellow

No. 1607 ..... 3 Balls

Pants—Chamois Yellow

No. 1607 ..... 3 Balls

Chart symbols explained on page 45.

The suits are worked in Stockinette St. with borders (indicated on charts by dotted lines) worked in K. 2, P. 2, ribbing.

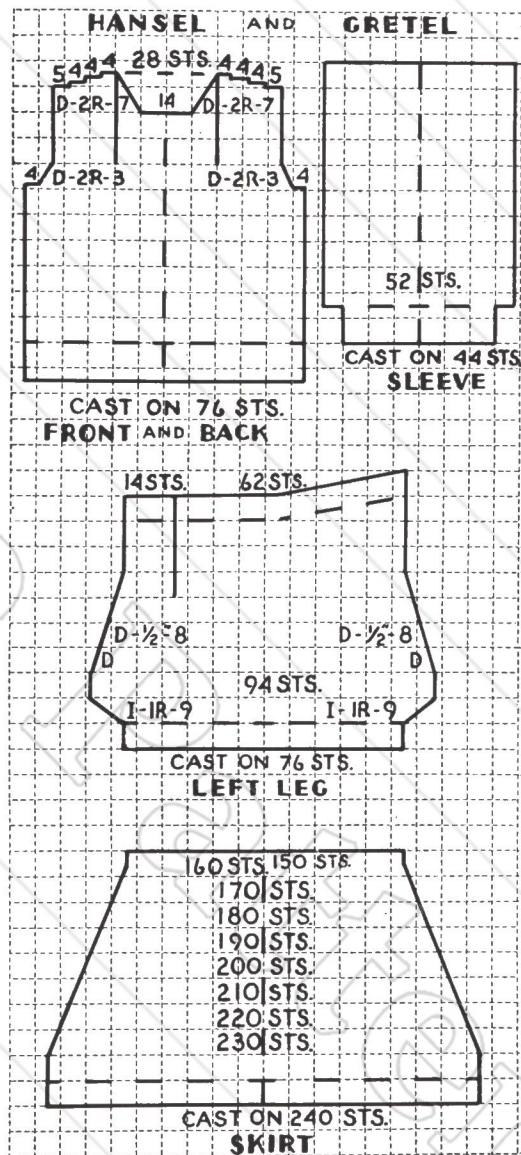
**SWEATER:** Follow chart for Front. To work 3½ inch neck openings, divide sts. at points indicated and follow chart.

Follow chart for Back, omitting neck openings and binding off remaining 28 sts. for back of neck.

Follow chart for Sleeves. After ribbing band, increase to 52 sts., starting in 4th st. and increasing 1 st. in every 5th st. across row.

Finishing, see page 46. Pick up 46 sts. around front of neck and work in ribbing for ¾ inch. Pick up 28 sts. at back of neck and work in ribbing for ¾ inch. Work 2 rows S. C. on front openings, working 5 loops for buttons on each front opening.

**SKIRT:** Follow chart, working first inch in ribbing. Work first decrease, 2 inches from start, as follows: \* K. 2 tog., K. 22, repeat from \* around row (10 sts. decreased—230 sts. remaining). Continue to decrease in this manner

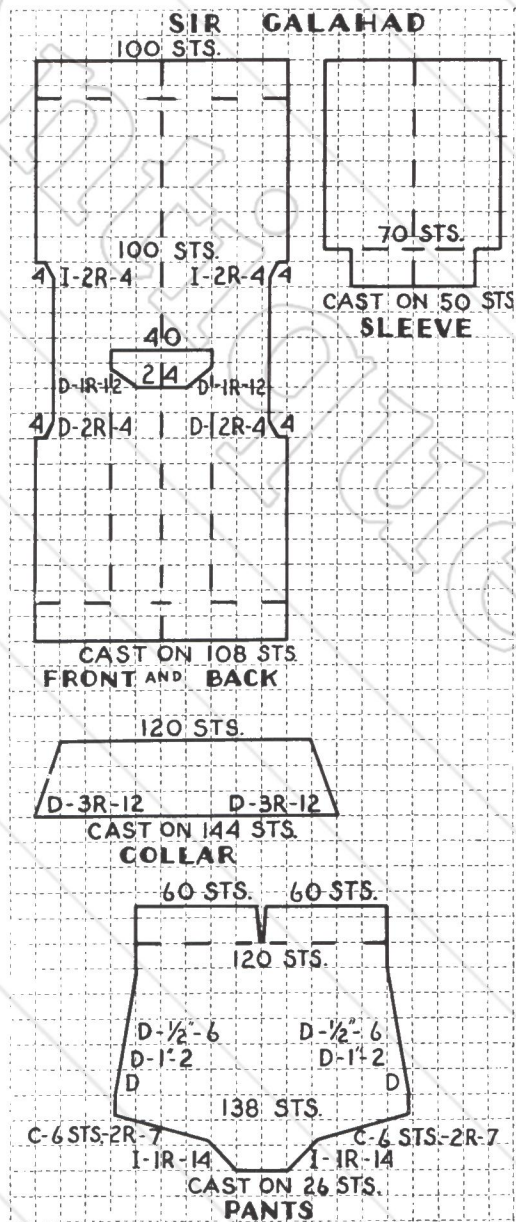


at points indicated on chart by number of sts. remaining after each decreasing round. There will be 1 st. less between decreases each decreasing round.

For finishing and casing for elastic, see page 46.

**PANTS:** Follow chart for Left Leg. For 4 inch front opening, divide sts. at point indicated on chart. To shape back of pants, work over 36 sts., work back, work over 27 sts., work back, work over 18 sts., work back, work over 9 sts., work back, work over 62 sts. and finish pants with 1 inch of ribbing.

Work Right Leg to correspond. Finishing, see page 46. Work 2 rows S. C. on front opening for underlap, and work 5 loops for buttons on front opening. Face front of waist with grosgrain ribbon and work casing for elastic (see page 46).



## Sir Galahad

No. 217

2 PIECE TWO-FOLD  
SAXONY ROMPER

Size 2

1 Pr. No. 21½ M. M. Needles—10 inch  
Stockinette St. Scale: 10 sts. to 1 inch  
14 rows to 1 inch

Ribbing Scale: 12 sts. to 1 inch  
12 rows to 1 inch

1 No. 5 Steel Crochet Hook

MINERVA SAXONY TWO-FOLD  
Sweater—Special Baby Blue

No. 231 ..... 3 Balls

Pants—Special Baby Blue

No. 231 ..... 3 Balls

Total ..... 6 Balls

Chart symbols explained on page 45.

The sweater is worked in Stockinette St. with a ribbed panel in the front of the sweater and 1½ inch borders of K. 1, P. 1, ribbing at

the bottom of the sweater and sleeves (indicated on charts by dotted lines). The pants are made in K. 2, P. 2, ribbing with a 1½ inch band of K. 1, P. 1, ribbing at the waist.

**SWEATER:** Follow chart for Front and Back. After ribbing border, with right side of work toward you, K. 31 sts., then start ribbed panel as follows:

Row 1—\* Y. O., slip 1, K. 1, P.S.S.O., (P. 1, K. 1) for 20 sts., repeat from \* once more, ending Y. O., slip 1, K. 1, P.S.S.O., K. to end of row.

Row 2—P. 32 sts., P. the Y. O., then \* (P. 1, K. 1) for 20 sts., P. 2, repeat from \* once more, then P. to end of row.

Repeat these 2 rows to neck opening.

Follow chart for Sleeves.

Working in K. 1, P. 1, ribbing, follow chart for Collar.

Finishing, see page 46. Using a double strand of yarn, make a monk's cord 20 inches long (see page 45). Draw monk's cord through collar at neck.

**PANTS:** Multiple of 4 sts. plus 2.

Row 1—\* K. 2, P. 2, repeat from \* across row, ending K. 2.

Row 2—\* P. 2, K. 2, repeat from \* across row, ending P. 2.

Follow chart for Front. When work measures 9 inches from start, divide sts. in half and work in 2 sections according to chart.

Work Back in same manner, omitting opening.

Finishing, see page 46. Using a double strand of yarn, make a monk's cord 30 inches long and draw through pants at waist. Work 1 row S. C. around bottom of pants.



## Downi-Fluff

No. 218

DOWNI-FLUFF  
CUDDLE YARN SACQUE

(No chart shown)

Size 1

1 Pr. No. 31½ M. M. Needles—14 inch

Scale: 8 sts. to 1 inch

10 rows to 1 inch

1 No. 2 Steel Crochet Hook

MINERVA CUDDLE YARN

Pink 1 No. 286..... 2 Balls

Starting at neck cast on 81 sts. and K. 1 row.

Row 1—K. 3, \* Y. O., K. 3, repeat from \* across row.

Row 2—P. 107.

Row 3—K. 3, \* Y. O., K. 2 tog., K. 2, repeat from \* across row.

Row 4—P. 107.

Repeat Rows 3 and 4 once more.

Row 7—K. 1, K. 2 sts. in next st., K. 1, \* Y. O., K. 2 tog., K. 2 sts. in next st., K. 1, repeat from \* across row.

Row 8—P. 134.

Row 9—K. 4, \* Y. O., K. 2 tog., K. 3, repeat from \* across row.

Row 10—P. 134.

Repeat Rows 9 and 10 once more.

Row 13—K. 1, K. 2 sts. in next st., K. 2, \* Y. O., K. 2 tog., K. 2 sts. in next st., K. 2, repeat from \* across row.

Row 14—P. 161.

Row 15—K. 5, \* Y. O., K. 2 tog., K. 4, repeat from \* across row.

Row 16—P. 161.

Repeat Rows 15 and 16 once more.

Row 19—K. 2, K. 2 sts. in next st., K. 2, \* Y. O., K. 2 tog., K. 1, K. 2 sts. in next st., K. 2, repeat from \* across row.

Row 20—P. 188.

Row 21—K. 6, \* Y. O., K. 2 tog., K. 5, repeat from \* across row.

Row 22—P. 188.

Repeat Rows 21 and 22 once more.

Row 25—K. 3, K. 2 sts. in next st., K. 2, \* Y. O., K. 2 tog., K. 2, K. 2 sts. in next st., K. 2, repeat from \* across row.

Row 26—P. 215.

Row 27—K. 7, \* Y. O., K. 2 tog., K. 6, repeat from \* across row.

Row 28—P. 215.

Repeat Rows 27 and 28 once more.

Row 31—K. 3, K. 2 sts. in next st., K. 3, \* Y. O., K. 2 tog., K. 2, K. 2 sts. in next st., K. 3, repeat from \* across row.

Row 32—P. 242.

Row 33—K. 8, \* Y. O., K. 2 tog., K. 7, repeat from \* across row.

Row 34—P. 242.

Row 35—K. 4, K. 2 sts. in next st., K. 3, \* Y. O., K. 2 tog., K. 3.

K. 2 sts. in next st., K. 3, repeat from \* across row.

Row 36—P. 269.

Next row, K. 40 sts. (left front) and place on a st. holder. On next 59 sts. (sleeve) work even in Stockinette St. for 5 inches. Bind off. Work other sleeve in same manner.

Join sts. of fronts and back and work even in Stockinette St. for 5 inches. Bind off.

Finishing, see page 46. Work a shell st. border around neck, front edges and bottom of sacque and around bottom of sleeves as follows: \* 1 S. C., skip 2 sts., 6 D. C. in next st., skip 2 sts., repeat from \* around all edges of sacque.

Trim with ribbon as illustrated.

## Jenny Wren

No. 219  
CUDDLE YARN  
SWEATER

Size 2

1 Pr. No. 3 M. M. Needles—10 inch  
Scale: 8 sts. to 1 inch

1 No. 3 Steel Crochet Hook

MINERVA CUDDLE YARN

Pink 1 No. 286..... 3 Balls

Chart symbols explained on page 45.

The sweater is worked in pattern with 1½ inch borders worked in K. 2, P. 2, ribbing, and ¾ inch borders at neck worked in Garter St. (indicated on charts by dotted lines).

**PATTERN:** Multiple of 10 sts. plus 5.

Row 1—\* K. 5, P. 5, repeat from \* across row, ending K. 5.

Row 2—P. 5, \* K. 2, P. 1, K. 2, P. 5, repeat from \* across row.

Row 3—\* K. 5, P. 1, K. 3, P. 1, repeat from \* across row, ending K. 5.

Row 4—Same as Row 2.

Row 5—Same as Row 1.

Row 6—Same as Row 1.

Row 7—\* P. 2, K. 1, P. 2, K. 5, repeat from \* across row, ending P. 2, K. 1, P. 2.

Row 8—K. 1, P. 3, K. 1, \* P. 5, K. 1, P. 3, K. 1, repeat from \* across row.

Row 9—Same as Row 7.

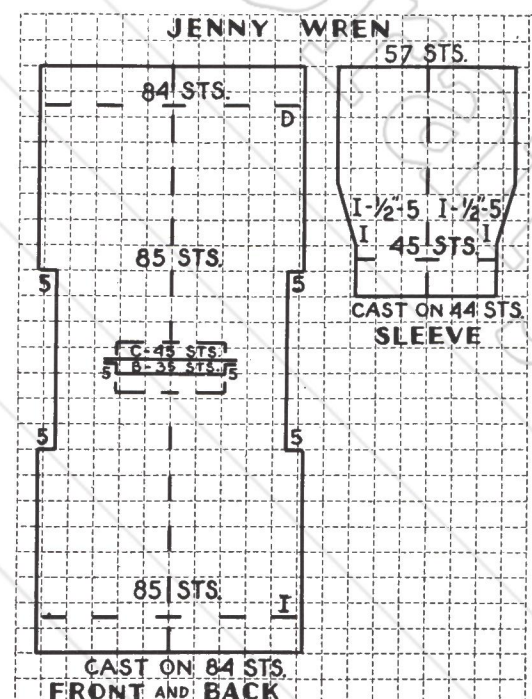
Row 10—Same as Row 1.

Repeat these 10 rows for pattern.

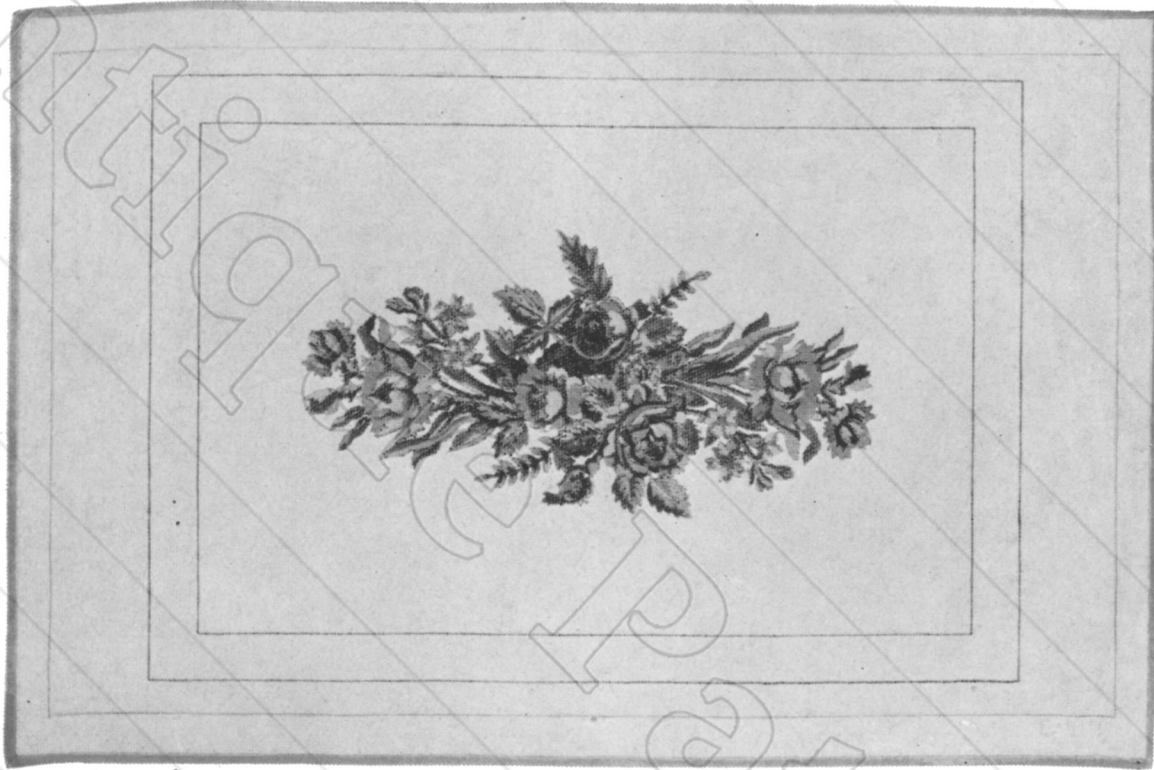
Follow chart for Front and Back. Before binding off for neck opening, work center 35 sts. in Garter St. (plain knitting) for ¾ inch. After casting on 45 sts. for back of neck, work center 35 sts. same as front.

Follow chart for Sleeves, increasing 1 st. above the ribbing. If desired the sleeves may be worked by picking up the sts. around the armhole and reversing sleeve chart.

Finishing, see page 46. Work 1 row S. C. around neck opening, working 2 loops for buttons on each shoulder.



In Minerva Needlepoint there is no monotony of just filling in backgrounds. You can have the satisfaction of doing the piece yourself and can honestly tell your friends that you made it. It is no more effort to work a design than a background—there are exactly the same motions in either case.



BENCH  
Minerva American Design No. 17  
Mt. Vernon Canvas  
Canvas 36" x 24" Design 18" x 8"



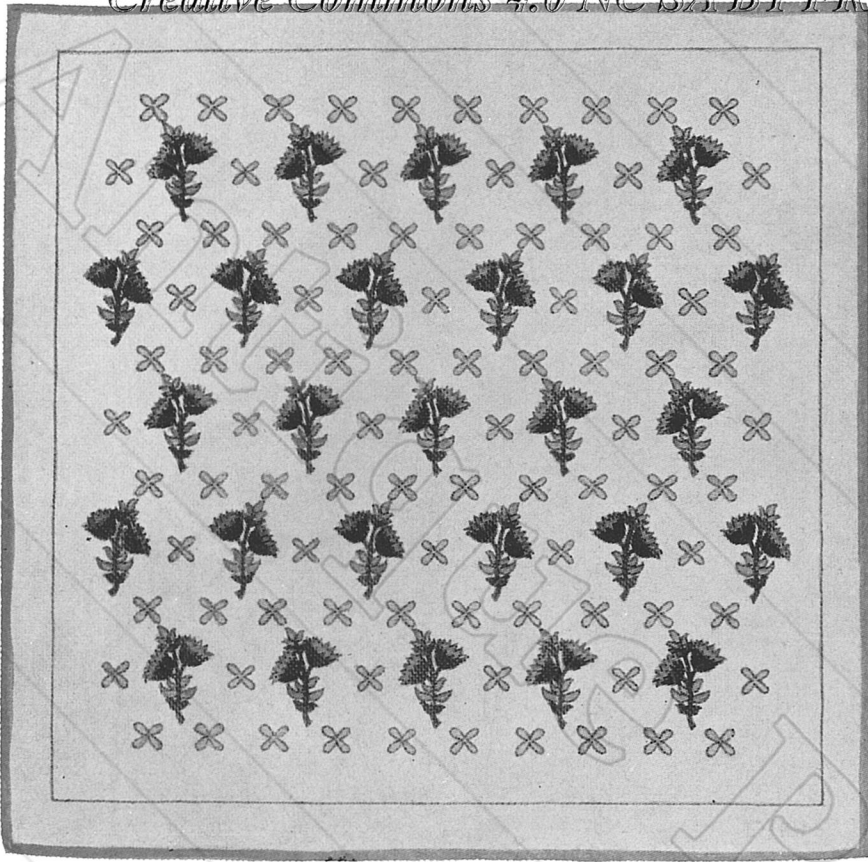
PILLOW  
Minerva American Design No. 402  
Mt. Vernon Canvas  
Canvas 18" x 18" Design 8" x 9"



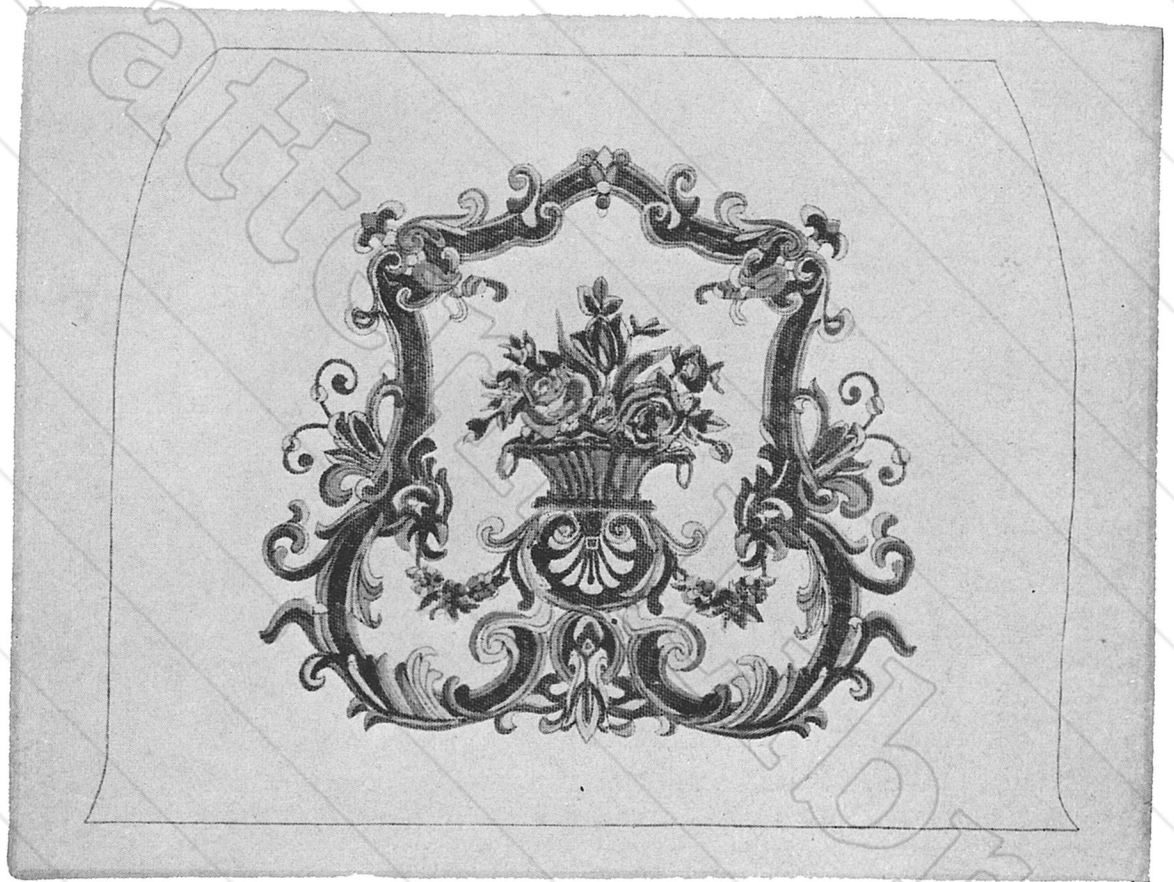
CHAIR SEAT  
Minerva Queen Anne Design No. 60  
Mt. Vernon Canvas  
Canvas 30" x 30" Design 21" x 21"



Minerva Hepplewhite Design No. 50  
Mt. Vernon Canvas  
Canvas 32" x 30" Design 27" x 25"



CHAIR SEAT  
Minerva American Design No. 204  
Mt. Vernon Canvas  
Canvas 26" x 26" Design 21" x 21"



CHAIR SEAT  
Minerva French Empire Design No. 703  
Mt. Vernon Canvas  
Canvas 36" x 28" Design 20" x 20"



CHAIR BACK  
AND SIDE ARM PIECES  
Minerva French Empire Design No. 702  
Mt. Vernon Canvas  
Canvas 36" x 28" Design 17" x 20"

# Martha Washington

No. 220  
**MELLOSHEEN KNITTED  
BEDSPREAD**

1 Pr. No. 1 Steel Needles—10 inch

MINERVA MELLOSHEEN  
White No. 1930..... 20 Skeins

or  
MINERVA CHALIMAR  
White No. 1900..... 18 Skeins

This amount is sufficient for a double  
size spread.

*Symbols explained on page 45.*

Fern Pattern Strip: 8½ inches  
wide and 105 inches long.

Cast on 67 sts., K. 2 rows, then  
start pattern.

Row 1—K. 1, K. 2 tog., thread  
over, K. 4, K. 2 tog., K. 2,  
(thread over, K. 2 tog.) 3 times,  
\* thread over, K. 1, thread over,  
K. 2, slip 1, K. 1, P.S.S.O., K. 5,  
K. 2 tog., K. 2, (thread over, K. 2  
tog.) 3 times, repeat from \* end-  
ing, thread over, K. 1, thread over,  
K. 2, slip 1, K. 1, P.S.S.O., K. 2,  
thread over, K. 2 tog., K. 1.

Row 2—And all even rows, P.

Row 3—K. 1, K. 2 tog., thread  
over, K. 3, K. 2 tog., K. 2,  
(thread over, K. 2 tog.) 3 times, \*  
thread over, K. 3, thread over, K.  
2, slip 1, K. 1, P.S.S.O., K. 3,  
K. 2 tog., K. 2, (thread over, K. 2  
tog.) 3 times, repeat from \* end-  
ing, thread over, K. 3, thread over,  
K. 2, slip 1, K. 1, P.S.S.O., K. 1,  
thread over, K. 2 tog., K. 1.

Row 5—K. 1, K. 2 tog., thread  
over, K. 2, K. 2 tog., K. 2,  
(thread over, K. 2 tog.) 3 times,  
\* thread over, K. 5, thread over,  
K. 2, slip 1, K. 1, P.S.S.O., K. 1,  
K. 2 tog., K. 2, (thread over, K. 2  
tog.) 3 times, repeat from \* end-  
ing, thread over, K. 5, thread over,  
K. 2, slip 1, K. 1, P.S.S.O., thread  
over, K. 2 tog., K. 1.

Row 7—K. 1, K. 2 tog., thread  
over, K. 1, K. 2 tog., K. 2,  
thread over, K. 1, (thread over,  
K. 2 tog.) 3 times, \* thread over,  
K. 2, slip 1, K. 1, P.S.S.O., K. 5,  
K. 2 tog., K. 2, thread over, K. 1,  
(thread over, K. 2 tog.) 3 times,  
repeat from \* ending, thread over,  
K. 2, slip 1, K. 1, P.S.S.O., K. 5,  
thread over, K. 2 tog., K. 1.

Row 9—K. 1, K. 2 tog., thread  
over, K. 2 tog., K. 2, thread over,  
K. 3, (thread over, K. 2 tog.) 3  
times, \* thread over, K. 2, slip 1,  
K. 1, P.S.S.O., K. 3, K. 2 tog.,  
K. 2, thread over, K. 3, (thread  
over, K. 2 tog.) 3 times, repeat  
from \* ending, thread over, K. 2,  
slip 1, K. 1, P.S.S.O., K. 4, thread  
over, K. 2 tog., K. 1.

Row 11—K. 1, K. 2 tog., thread  
over, K. 2 tog., K. 1, thread over,  
K. 5, (thread over, K. 2 tog.) 3  
times, \* thread over, K. 2, slip 1,  
K. 1, P.S.S.O., K. 1, K. 2 tog.,  
K. 2, thread over, K. 5, (thread  
over, K. 2 tog.) 3 times, repeat  
from \* ending, thread over, K. 2,  
slip 1, K. 1, P.S.S.O., K. 3, thread  
over, K. 2 tog., K. 1.

Row 12—Purl.

Repeat these 12 rows for pattern  
until work measures 105 inches.  
K. 3 rows, then bind off.

Make 6 more Fern Pattern strips.

Plain Strip: 4 inches wide and  
105 inches long.

Cast on 41 sts.

Row 1—(K. 1, slip 1) across row,  
ending K. 1.

Row 2—K.

Now start pattern.

Row 1—K. 1, K. 2 tog., thread  
over, \* K. 1, slip 1, repeat from

\* across row, ending K. 1, thread  
over, slip 1, K. 1, P.S.S.O., K. 1.

Row 2—Slip 2 sts., P. across to  
last 2 sts., slip 2 sts.

Repeat these last 2 rows until work  
measures 105 inches, then work  
first 2 rows, K. 1 row, then bind  
off.

Make 5 more Plain strips.

Sew strips together on wrong side,  
having lace stitch strips at outer  
edges and alternating lace stitch  
and plain strips.

**FRINGE:** Using a double strand,  
\* work 1 S. C., drawing up a 4  
inch loop, leave loop on hook, 1  
S. C. in next st., draw up a 4 inch  
loop (hold loops taut with third  
finger of right hand), leave loops  
on hook, repeat from \* until you  
have 5 or 6 loops on hook, then  
drop all loops but last one from  
hook, and continue in same manner  
around bedspread. Cut loops.



ALL FURNITURE PHOTOGRAPHED IN THIS  
BOOK BY COURTESY OF W. AND J. SLOANE,  
NEW YORK CITY.





# Capri

No. 221  
MELLOSHEEN  
BEDSPREAD

1 No. 6 Steel Crochet Hook

Scale: 1 motif about 6¼ inches x 6¾ inches

MINERVA MELLOSHEEN

Natural No. 1931..... 40 Skeins  
or

MINERVA CHALIMAR

Natural No 1901..... 35 Skeins

This amount is sufficient for  
a double size spread.

*Symbols explained on page 45.*

The bedspread is approximately  
85" x 105".

## MOTIF:

Row 1—Ch. 4, 1 S. C. in second Ch. from hook, 1 S. C. in each of the next 2 Ch., Ch. 2, turn.

Row 2—1 S. C. in second Ch. from hook (increasing 1 st.), 1 S. C. in each S. C., inserting hook through 2 loops, ending with 1 S. C. in last Ch. (increasing 1 st.), 5 S. C. across row, Ch. 2, turn.

Row 3—1 S. C. in second Ch. from hook (inserting hook in top loop), 1 S. C. in each S. C., ending with 1 S. C. in last Ch. (7 S. C.), Ch. 2, turn.

Row 4—1 S. C. in second Ch. from hook (inserting hook through 2 loops), ending with 1 S. C. in last Ch. (9 S. C.), Ch. 2, turn.

Row 5—1 S. C. in second Ch. from hook (inserting hook in top loop), 1 S. C. in each S. C., ending with 1 S. C. in last Ch. (11 S. C.), Ch. 2, turn.

Row 6—1 S. C. in second Ch. from hook (inserting hook through 2 loops), 1 S. C. in each S. C., ending with 1 S. C. in last Ch. (13 S. C.), Ch. 2, turn.

Row 7—1 S. C. in second Ch. from hook (inserting hook in top

loop), 1 S. C. in each S. C., ending with 1 S. C. in last Ch. (15 S. C.), Ch. 2, turn.

Row 8—Starting first Knob St.—1 S. C. in second Ch. from hook (inserting hook through 2 loops), 7 more S. C., work 6 D. C. in next S. C., turn work, insert hook in last S. C. of the same row (on wrong side of work), work 1 S. C. to close the Knob, turn the work and on the right side, work 1 S. C. in each S. C., ending with 1 S. C. in last Ch. (8 S. C. after Knob), Ch. 2, turn.

Row 9—1 S. C. in second Ch. from hook (top loop), 8 more S. C., 1 S. C. in back of the Knob, 9 S. C. after Knob (19 S. C.), Ch. 2, turn.

Row 10—Continue to increase at beginning and end of each row as before and work through both loops on Knob rows. Work 8 S. C., then in next S. C. work 1 Knob as before. Work 3 S. C., work 1 Knob, work 8 S. C. to end of row, Ch. 2, turn (there are always 8 S. C. before the first Knob and 8 S. C. after the last Knob on each Knob row).

Row 11—Work 9 S. C., 1 S. C. in Knob, 3 S. C., 1 S. C. in next Knob, 9 S. C. (23 S. C. across row), Ch. 2, turn.

Row 12—8 S. C., \* 1 Knob, 3 S. C., repeat from \* once more, 1 Knob, 8 S. C., Ch. 2, turn.

Row 13—Work 1 row of 27 S. C., Ch. 2, turn.

Row 14—8 S. C., \* 1 Knob, 3 S. C., repeat from \* 2 times more, 1 Knob, 8 S. C., Ch. 2, turn.

Row 15—31 S. C., Ch. 2, turn.

Row 16—8 S. C., \* 1 Knob, 3 S. C., repeat from \* 3 times more, 1 Knob, 8 S. C., Ch. 2, turn.

Row 17—Work 35 S. C., Ch. 2, turn.

Row 18—8 S. C., \* 1 Knob, 3 S. C., repeat from \* 4 times more, 1 Knob, 8 S. C., Ch. 2, turn.

Row 19—39 S. C., Ch. 2, turn.

Row 20—8 S. C., \* 1 Knob, 3 S. C., repeat from \* 5 times more, 1 Knob, 8 S. C., Ch. 1, turn.

Row 21—First row of decreases—1 S. C. in second S. C. from hook, 6 more S. C., 1 S. C. in Knob, 3 S. C. and continue across row as before, ending with 7 S. C. after last Knob (39 S. C.), Ch. 1, turn.

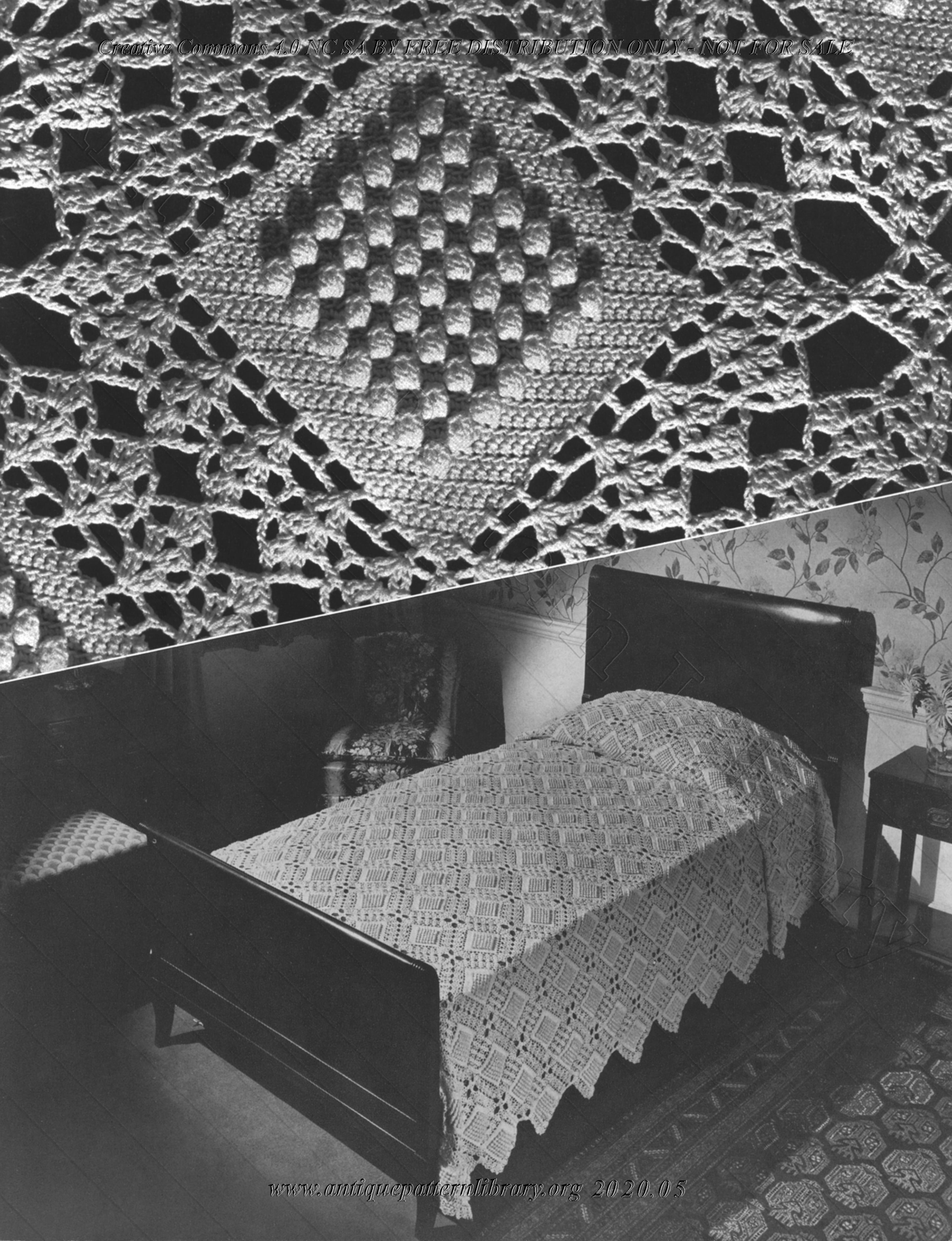
Continue decreases to correspond with increases until other half of diamond is completed. Last row will have 3 S. C. Do not break yarn, turn, slip st. in second S. C. then work around diamond as follows:

Row 1—Ch. 6, 1 D. C. in last row of S. C., \* Ch. 3, skip 1 row, 1 D. C. in next row of S. C., repeat from \* around diamond (10 mesh at each side, 40 mesh all around). Join last Ch. 3 with a slip st. in third Ch. of Ch. 6.

Row 2—Ch. 4, 1 D. C. in same Ch., Ch. 2, 2 D. C. in same Ch., Ch. 3, \* 2 D. C. in next D. C. of previous row, Ch. 2, 2 D. C. in same D. C., Ch. 3, skip 1 D. C., repeat from \*, working 1 shell in each of 3 D. C. at each corner. Repeat from \* around diamond, ending with Ch. 3, 1 slip st. in 4th Ch. at start of row, 1 slip st. in next D. C., 1 slip st. in next Ch.

Row 3—Ch. 4, 1 D. C. in space, Ch. 2, 2 D. C. in same space, \* Ch. 1, 1 D. C. in 2nd Ch. of next mesh of previous row, Ch. 1, 2 D. C. in next space, Ch. 2, 2 D. C. in same space, repeat from \* around diamond, ending with Ch. 1, 1 D. C. in 2nd Ch., Ch. 1, 1 slip st. in 4th Ch. at start of row, 1 slip st. in next st., 1 slip st. in next Ch.

*(Instructions continued on page 44)*



# Madison

No. 222

## MELLOSHEEN TABLE CLOTH

1 No. 6 Steel Crochet Hook

Scale: 1 motif about 3½ inches in diameter.

### MINERVA MELLOSHEEN

Natural No. 1931..... 21 Skeins

or

### MINERVA CHALIMAR

Natural No. 1901..... 19 Skeins

*Symbols explained on page 45.*

The table cloth is approximately 85" x 106".

**MOTIF:** Ch. 6, join in a ring with a slip st., Ch. 5.

Row 1—1 D. C. in ring, \* Ch. 3, 1 D. C. in ring, repeat from \* 3 times more, Ch. 3, 1 slip st. in second Ch. of Ch. 5 (6 spaces).

Row 2—1 S. C. in next space, \* Ch. 12, 1 S. C. in second Ch. from hook, 1 H. D. C. in next Ch., 1 D. C. in each of 7 Ch., 1 H. D. C. in next Ch., 1 S. C. in last Ch., fasten this petal with 1 S. C. in same space, Ch. 5, 1 S. C. in first Ch. of Ch. 5 (picot), 1 S. C. in next space, repeat from \* ending with sixth picot, fasten with slip st. in first S. C. of same row and break thread.

Row 3—Attach thread to center top of 1 petal, work 9 S. C. toward center, \* Ch. 5, 1 S. C. in first Ch. of Ch. 5 (picot), 1 S. C. in fourth st. of next petal, work 8 S. C. toward point, 1 S. C. in same st. as last st., 8 more S. C. toward center, repeat from \* to last petal, ending with 1 S. C. at same point as start of row.

Row 4—Work 7 S. C. toward center, \* Ch. 5, 1 S. C. in first Ch. of Ch. 5 (picot), Ch. 1, 1 S. C. in third S. C. of next petal, 6 more S. C. toward point, 2 S. C. in next S. C., 6 S. C. toward center, repeat from \*, ending with 7 S. C. toward

point and 1 S. C. over first S. C. of row.

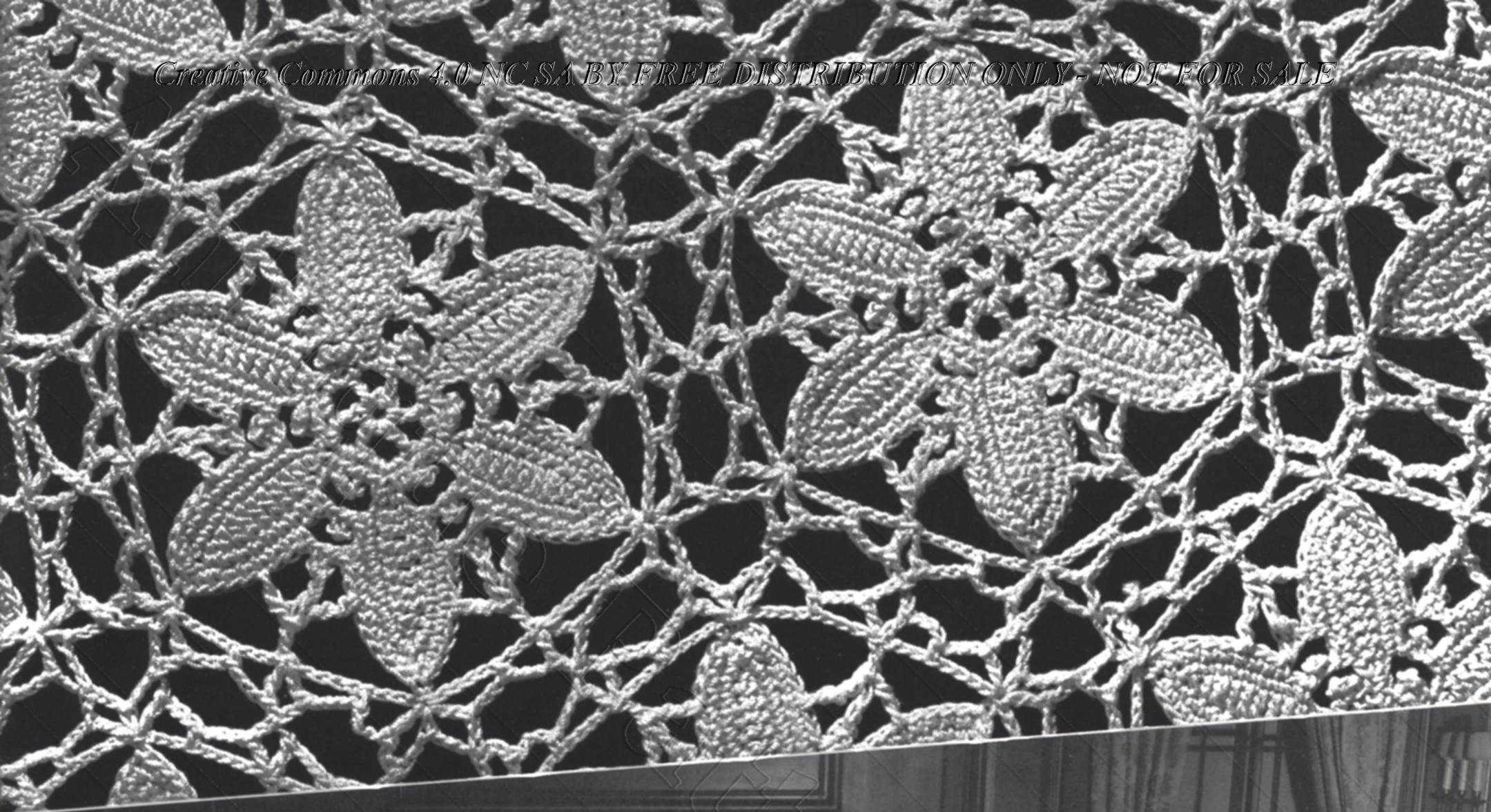
Row 5—\* Ch. 8, thread over 3 times, skip 3 S. C., insert hook in next S. C., thread through, thread over and through 2 loops, thread over and through 2 loops, thread over, insert hook in the next picot, thread through st., thread over and through 2 loops, thread over 2 times, insert hook in fourth S. C. of next petal, thread through st., thread over and through 2 loops, thread over and through 2 loops, thread over and through 3 loops, thread over and through 2 loops, thread over and through last 2 loops, Ch. 8, 1 S. C. in point of next petal, repeat from \*, ending with Ch. 8, 1 S. C. in point of first petal.

Row 6—Ch. 7, 1 S. C. in same S. C., Ch. 5, 1 D. C. in same st. (forming 2 loops in the corner), \* Ch. 3, skip 3 Ch., 1 S. C. in next Ch., Ch. 3, skip 4 Ch., 1 D. C. in long st. of previous row,

Ch. 4, 1 D. C. in same st., Ch. 3, skip 3 Ch., 1 S. C. in next Ch., Ch. 3, skip 4 Ch., 1 D. C. in S. C. of previous row, Ch. 5, 1 S. C. in same st., Ch. 5, 1 D. C. in same st., repeat from \*, ending with Ch. 3, skip 3 Ch., 1 S. C. in next Ch., Ch. 3, skip 4 Ch., 1 D. C. in D. C., Ch. 4, 1 D. C. in same st., Ch. 3, skip 3 Ch., 1 S. C. in next Ch., Ch. 3, slip st. in second Ch. of Ch. 7, break thread and fasten. To join motifs—When working the two loops in second corner of second motif, work first loop, then Ch. 3, drop Ch. from hook, insert hook in second loop of first motif, insert hook in the Ch. and draw through, Ch. 2, complete the second loop, work to the center loop and join in same manner to the center loop of first motif, work to the first loop of next corner and join in same manner with the corresponding loop of the first motif. Continue to join motifs as illustrated.

Make 786 more motifs.





Antique

Pattern

# Watches

No. 223

## 5 PIECE CHALIMAR LUNCHEON SET

1 No. 8 Steel Crochet Hook  
Scale: 1 motif about 2<sup>3</sup>/<sub>8</sub> inches inches in diameter.

### MINERVA CHALIMAR

White No. 1900..... 2 Skeins  
or

### MINERVA MELLOSHEEN

White No. 1930..... 3 Skeins

*Symbols explained on page 45.*

The scarf is 14 motifs long at longest point and 7 motifs wide. The place mats are 6 motifs long at longest point and 5 motifs wide.

**MOTIF:** Ch. 9, join in a ring.

Row 1—Ch. 3, 23 D. C. in ring, join with a slip st. in 3rd Ch. of Ch. 3.

Row 2—Ch. 10, 1 S. C. in 4th Ch. from hook, picking up the back loop of Ch., 1 H. D. C. in next Ch., 1 D. C. in each of the next 3 Ch., skip 1 D. C. in ring, 1 D. C. in next D. C., \* Ch. 8, 1 S. C. in 4th Ch. from hook, 1 H. D. C. in next Ch., 1 D. C. in each of the next 3 Ch., skip 1 D. C. in ring, 1 D. C. in next D. C., repeat from \* ending with 3 D. C. in last petal, 1 slip st. in 3rd Ch. of Ch. 10. Fasten and break thread. 12 petals in round.

On last row join 2 petals of each star with 2 corresponding petals of any other star with a slip st. (after chaining 6 of the Ch. 8) as illustrated.

Make 85 more motifs for scarf.

Make 4 place mats, 24 motifs each, and join in same manner as illustrated.



" IT'S PART OF MY GOING-AWAY OUTFIT — I WANT TO HAVE IT READY RIGHT AFTER THE CEREMONY! "



Mary Lee

No. 224  
MELLOSHEEN TABLE  
CLOTH

1 No. 9 Steel Crochet Hook

Scale: 1 motif about 4 1/4 inches  
in diameter.

MINERVA MELLOSHEEN  
Natural No. 1931..... 21 Skeins  
or

MINERVA CHALIMAR  
Natural No. 1901..... 19 Skeins

*Symbols explained on page 45.*

The table cloth is approximately  
72" x 102"

**MOTIF:** Ch. 10, join in a ring.

Row 1—Ch. 3, thread over, insert hook in ring, draw thread through (3 loops on hook), thread over, draw through 2 loops (2 loops on hook), thread over, insert hook in ring, draw thread through (4 loops on hook), thread over, draw through 2 loops, thread over, draw through 3 loops, Ch. 5, \* thread over 2 times, insert hook in ring, draw thread through (4 loops on hook), thread over, draw through 2 loops, thread over, insert hook in ring, draw thread through (5 loops on hook), thread over, draw through 2 loops (4 loops on hook), thread over, insert hook in ring, draw thread through (6 loops on hook), thread over, draw through 3 loops, thread over, draw through 4 loops, Ch. 4, repeat from \* 6 times more, ending with Ch. 4, 1 slip st. in first Ch. of Ch. 5 (8 spaces).

Row 2—5 S. C. in each space, ending row with a slip st. in first S. C., 1 slip st. in next S. C.

Row 3—\* Ch. 5, 1 S. C. in first Ch. of Ch. 5 (picot), Ch. 5, 1 S. C. in S. C. of picot, Ch. 5, 1 S. C. in S. C. of second picot, skip 1 S. C. in loop, 1 slip st. in next S. C., 1 slip st. in each of the

next 3 S. C., repeat from \* around row, ending with skip 1 S. C. in loop, 1 slip st. in next S. C. Break thread.

Row 4—Attach thread at second Ch. of any center picot and work 1 S. C. in same Ch. picking up front loop, 1 S. C. in center Ch., 1 S. C. in next Ch., \* Ch. 6, 1 S. C. in 2nd Ch. of next center picot, 1 S. C. in each of next 2 Ch., repeat from \* around row, ending with Ch. 6, 1 slip st. in first S. C.

Row 5—Ch. 3, 1 D. C. in each of the next 2 S. C., 9 D. C. in space, \* 1 D. C. in each of the S. C., 9 D. C. in space, repeat from \* around row, ending with a slip st. in 3rd Ch. of Ch. 3.

Row 6—Ch. 2, 1 S. C. in each of next 2 D. C., \* Ch. 5, skip 3 D. C., 1 S. C. in each of next 3 D. C., repeat from \* around row, ending with Ch. 5, 1 slip st. in 2nd Ch. of Ch. 2, 1 slip st. in next S. C.

Row 7—Ch. 5, \* 3 D. C. in center Ch. of next loop, Ch. 4, 1 S. C. in 2nd S. C. of next group of S. C., Ch. 4, repeat from \* around row, ending with Ch. 4, 1 slip st. in first Ch. of Ch. 5, 1 slip st. in each Ch. toward the 3 D. C., 1 slip st. in D. C.

Row 8—\* Ch. 5, 1 S. C. in first Ch. (picot), Ch. 5, 1 S. C. in S. C. of picot, Ch. 5, 1 S. C. in S. C. of second picot, skip 1 D. C., 1 S. C. in next D. C., Ch. 5, 1 S. C. in first D. C. of next group of D. C., repeat from \* around row, ending with Ch. 5, 1 slip st. in slip st. near the picot. Break thread.

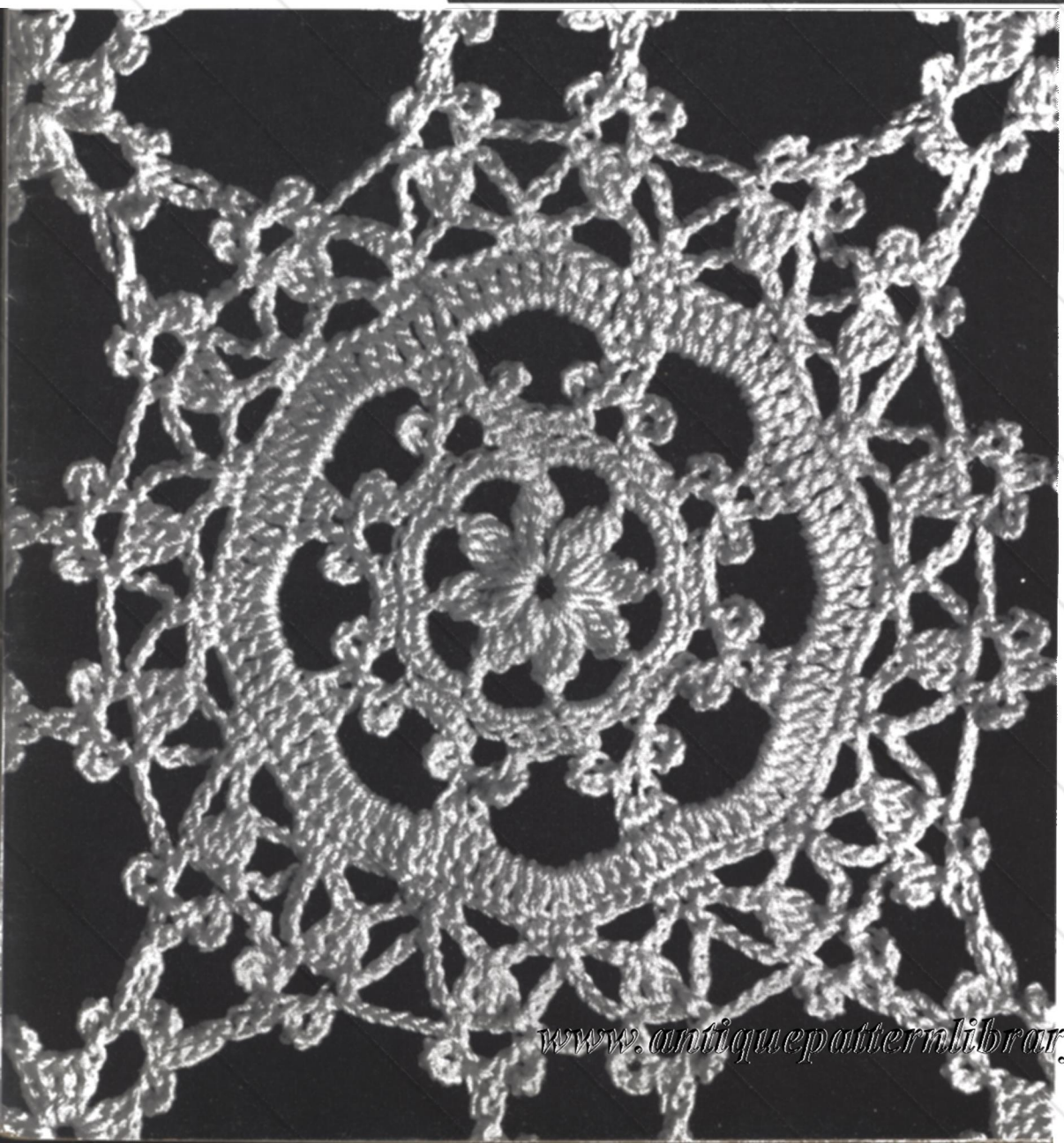
Joining—When working last row of 2nd motif, draw Ch. 5 of center picot of two groups of picot of second motif through 2 corresponding picots of first motif, leaving 2 groups of picots free between joinings for center.

Make 407 more motifs.

Filling in motif—Ch. 8, join in a ring. Ch. 3, 3 D. C. in ring, \* Ch. 5, 1 S. C. in first Ch. of Ch. 5 (picot), Ch. 4, drop loop from hook, insert hook in center picot of second group of picots, draw loop through, Ch. 4, 1 S. C. in S. C. of last picot, Ch. 5, 1 S. C. in last S. C. (picot), Ch. 4, drop loop from hook, insert hook in center picot of first group in next motif, draw loop through, Ch. 4, 1 S. C. in S. C. of last picot, Ch. 5, 1 S. C. in last S. C. (picot), 1 D. C. in ring, repeat from \* until all center picots of 4 motifs are joined, ending with a slip st. in 3rd Ch. of Ch. 3 at start.



"Wasn't I lucky to get such a perfect match after I had no luck at all in the stores!"



*Minerva Natural Mellosheen was preferred by 71% of all the women interviewed this year by an independent research organization.*



# Daytona

Illustrated on page 15

No. 208  
CROCHETED  
MELLOSHEEN JACKET

Size 16

1 No. 2 Steel Crochet Hook—for body of blouse

Scale: 1 pattern to 1½ inches  
6 rows to 1 inch

1 No. 5 Steel Crochet Hook  
1 Tapestry Needle  
14-½ inch buttonmolds

MINERVA MELLOSHEEN

Natural No. 1931..... 4 Skeins

Chart symbols explained on page 45.

The entire jacket is worked in pattern with 4 rows of S. C. on all edges.

**PATTERN:** Multiple of 13 Ch. plus 1.

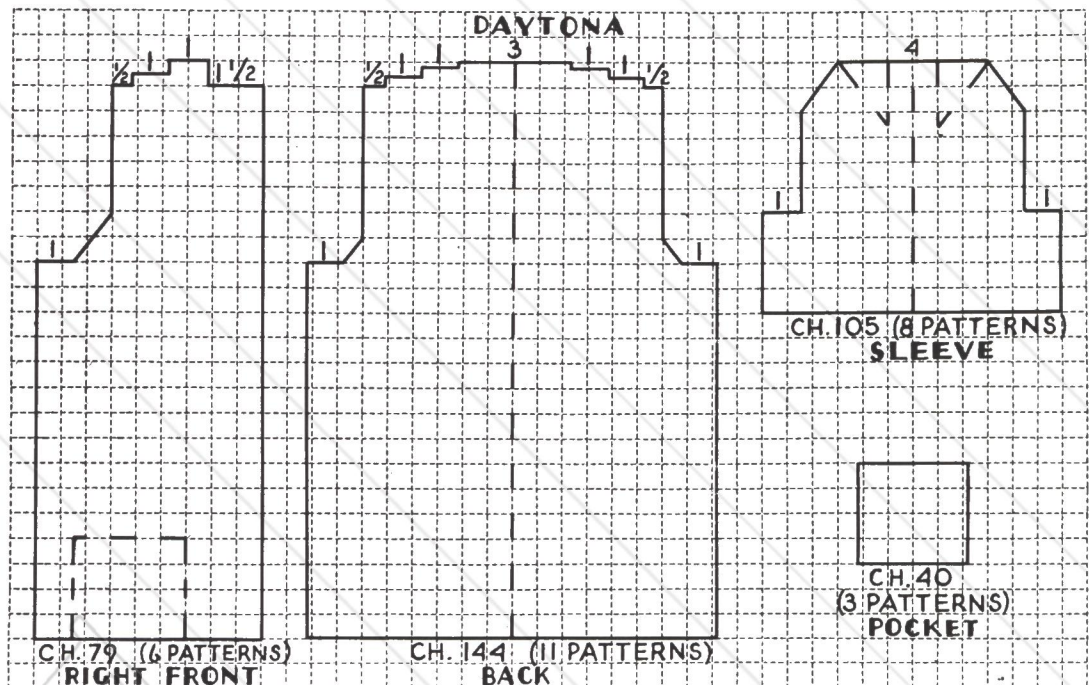
The unit of decreasing is one pattern unless otherwise noted.

Row 1—\* 1 S. C. in each of 4 Ch., 1 D. C. in each of 2 Ch., 1 Tr. C. in next Ch., 1 D. C. in each of 2 Ch., 1 S. C. in each of 4 Ch., repeat from \* across row, Ch. 2, turn.

Row 2—Skip 1 st., \* 1 D. C. in each of 5 sts., 3 D. C. in next st., 1 D. C. in each of 5 sts., skip 2 sts., repeat from \* across row, ending with 1 D. C. in each of 5 sts., Ch. 1, turn.

Row 3—\* 1 S. C. in each of 6 sts., 2 S. C. in next st., 1 S. C. in each of 6 sts., repeat from \* across row, Ch. 2, turn.

Row 4—1 long st. (Y. O. hook, insert hook under the Ch. 2 at start of Row 2, draw thread through, Y. O., through 1 loop, Y. O., through 2 loops, Y. O., through 1 loop, Y. O., through last 2 loops), skip 1 st., \* 1 D. C. in back loop of each of 6 sts., 1 long st. around the center D. C. in Row 2, 1 D. C. in each of 6 sts., 1 long



st. around the last D. C. of the group of 5 D. C. in Row 2, skip 2 sts., repeat from \* across row, ending with 1 long st., Ch. 1, turn.

Row 5—\* Skip 1 st., 1 S. C. in each of 6 D. C., 2 S. C. in next st., 1 S. C. in each of 6 D. C., repeat from \* across row, Ch. 2, turn.

Row 6—1 long st. around the first long st. below, skip first S. C., \* 1 D. C. in back loop of each of 6 S. C., 1 long st. around long st. below, 1 D. C. in back loop of each of 6 S. C., 1 long st. around long st. below, skip 2 S. C., repeat from \* across row, ending with long st. around last long st. below, Ch. 1, turn.

Repeat Rows 5 and 6 for pattern.

Follow chart for Right Front. After fastening off 1 pattern at underarm, decrease 1 st. every row, until 1 pattern has been decreased.

Work Left Front to correspond.

Follow chart for Back. After fastening off 1 pattern at each underarm, decrease 1 st. each side every row, until ½ pattern has been decreased.

Follow chart for Sleeves. Shape cap of sleeve by decreasing 1 st. each side until 1 pattern has been decreased.

Follow chart for 2 Pockets.

Finishing, see page 46. With the No. 5 Steel Crochet Hook, work 4 rows S. C. at top of pockets and around all edges of jacket. On last row, starting 5 inches from bottom, work 14 buttonholes on right front, ½ inch wide and ½ inch apart. Sew darts in sleeves (indicated on chart by dotted lines). Sew pockets in place. With a tapestry needle and a strand of Mellosheen, work over buttonmolds in the buttonhole stitch as illustrated. Sew buttons in place.



"You'll just have to diet 'til it fits you—I'm tired of ripping it out and doing it over."

# Oronoco

Illustrated on pages 2 and 3

No. 200  
2 PIECE VELVEEN  
COSTUME

Size 16

1 Pr. No. 1 Steel Needles—12 inch  
for blouse  
Scale: 9 sts. to 1 inch  
14 rows to 1 inch

1 No. 1 Steel Circular Needle—29 inch  
—for skirt  
Scale: 9 sts. to 1 inch

1 Pr. No. 3 M. M. Needles—14 inch  
—for jacket  
Scale: 8 sts. to 1 inch  
12 rows to 1 inch

1 No. 4 Steel Crochet Hook—for  
stripes

## MINERVA VELVEEN

Dress—Viking Blue No. 1162... 9 Balls  
Jacket—Viking Blue No. 1162 5 Balls  
Colonial Buff No. 1103..... 2 Balls  
Hawthorn Berry No. 1163..... 2 Balls

Total ..... 18 Balls

Chart symbols explained on page 45.

The one piece dress is worked in Stockinette St. with borders (indicated on charts by dotted lines) worked in the ribbing pattern. The jacket is worked in pattern with hem and seam allowance, indicated on charts by dotted lines.

**RIBBING PATTERN:** Multiple of 2 sts. plus 1.

Row 1—\* K. 1, P. 1, repeat from \* across row, ending K. 1.

Row 2—\* P. 1, K. 1, repeat from \* across row, ending P. 1.

Repeat these 2 rows for ribbing pattern.

**BLOUSE:** Follow chart for Front. After ribbing band, work as follows: K. 14, increase 1 st. in next st., \* K. 1, increase 1 st. in next st. \*, repeat between \*'s 17 times more, K. 33, increase 1 st. in next st., repeat between \*'s 18 times, K. 14. Decrease for yoke as follows: K. 3, K. 2 tog., \* K. 1, K. 2 tog. \*, repeat between \*'s 17 times

more, K. 33, K. 2 tog., repeat between \*'s 18 times, K. 3. Change to ribbing and bind off center st. for 1 inch neck opening at point indicated on chart.

Follow chart for Back, working first inch and last 2 inches in ribbing pattern. When work measures 14 inches from start, bind off center st. for 2 inch neck opening.

Follow chart for Sleeves. After ribbing band, work as follows: K. 26, increase 1 st. in each of the next 36 sts., K. 26. When work measures 7½ inches from start, work as follows: K. 27, K. 2 tog., \* K. 1, K. 2 tog., repeat from \* 16 times more, K. 28. Continue to work center 35 sts. in ribbing pattern and remaining sts. in Stockinette St.

Finishing, see page 46. Work 2 rows S. C. on neck opening in back, working 3 loops for buttons.

**SKIRT:** Follow chart. When work measures 5 inches from start, work as follows: \* K. 2 tog., K. 39, repeat from \* around row (10 sts. decreased—400 sts. remaining on needle). Continue decreasing in this manner at points indicated on chart by number of sts. remaining after each decreasing round. There will be 1 st. less between the K. 2

tog. each decreasing round. When work measures 28 inches from start, change to K. 1, P. 1, ribbing, and finish skirt.

Finishing, see page 46. Join blouse and skirt and work casing for elastic (see page 46).

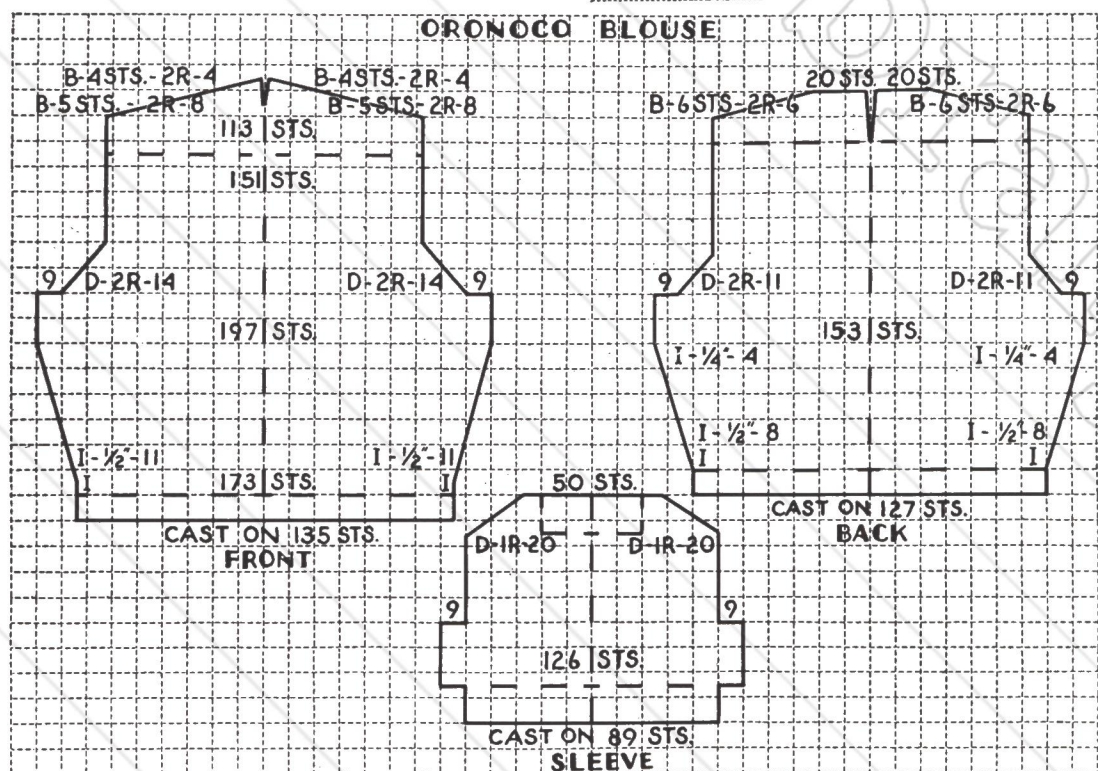
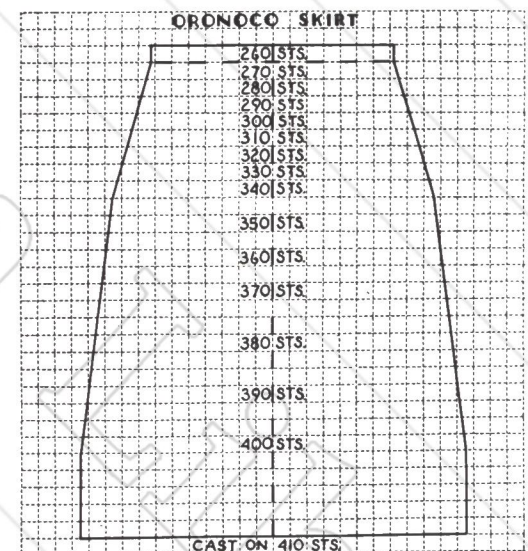
**JACKET PATTERN:** Multiple of 4 sts. plus 3. Always work 4 rows in Stockinette St. (starting with a P. row) with Viking Blue at bottom of each section for hem and then work pattern as follows:

Row 1—With color No. 1103, P.

Row 2—With color No. 1163, K.

Row 3—With color No. 1162, \* K. 3, yarn in front, slip 1, yarn back, repeat from \* across row, ending K. 3.

(Continued on next page)



**ORONOCO Instructions**

(Continued from previous page)

Row 4—With color No. 1103, \* K. 3, slip 1, repeat from \* across row, ending K. 3.

Row 5—With color No. 1103, \* P. 3, slip 1, repeat from \* across row, ending P. 3.

Row 6—With color No. 1162, K.

Row 7—With color No. 1163, \* K. 3, yarn in front, slip 1, yarn back, repeat from \* across row, ending K. 3.

Row 8—With color No. 1103, same as Row 4.

Row 9—Same as Row 5.

Row 10—With color No. 1163, K. Break yarn.

Row 11—With color No. 1162, K. Break yarn.

Row 12—With color No. 1103, K. Break yarn.

With color No. 1162, P. 1 row, K. 1 row (Stockinette St.) for 18 rows.

Repeat these 30 rows for pattern.

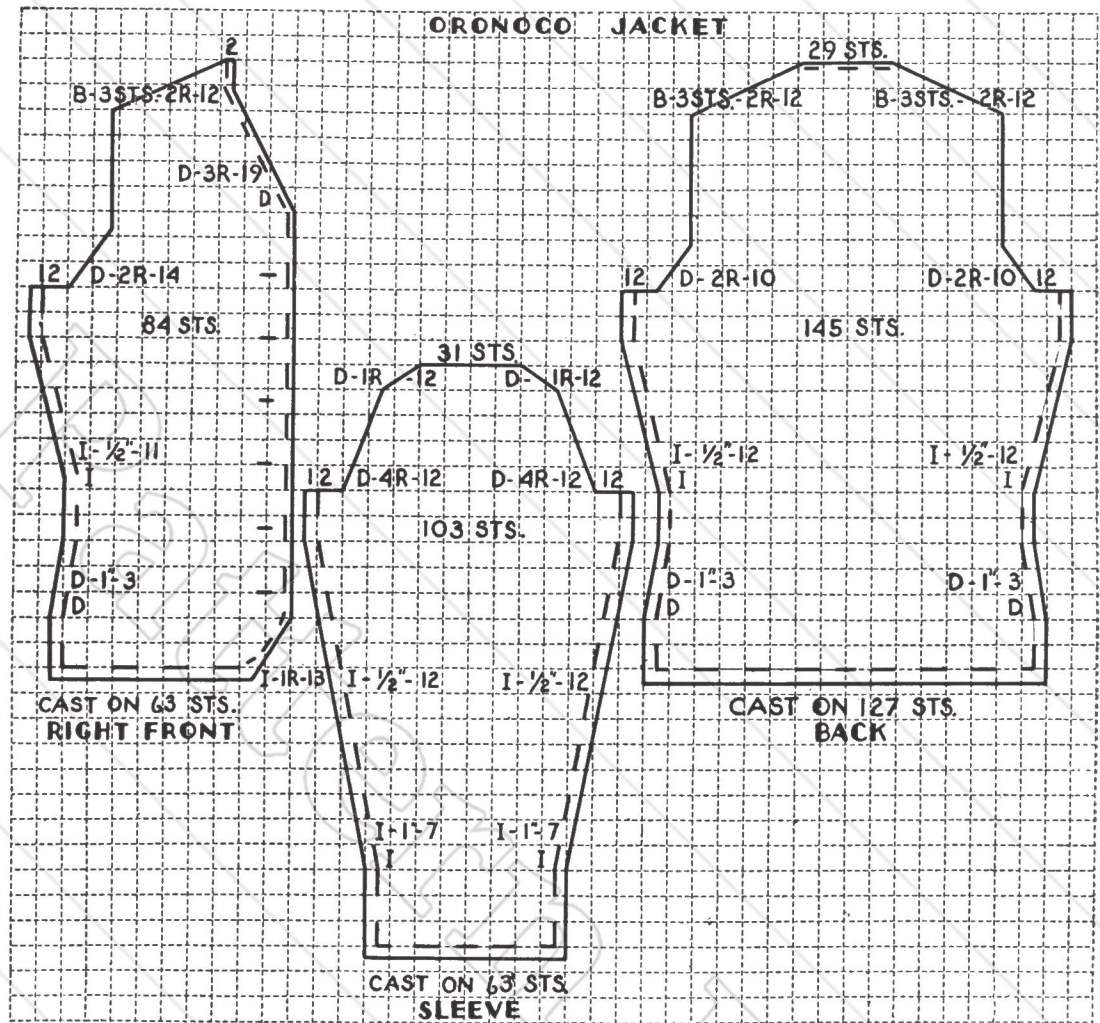
**JACKET:** Follow charts for Back, Sleeves (starting with 22 rows Stockinette St. with color No. 1162) and Right Front. Buttonholes are 6 sts. wide and 6 sts. from edge. To work buttonholes, see page 45.

Work Left Front to correspond, omitting buttonholes.

Work vertical stripes as follows: \* With a strand of color No. 1163 in back of work, with crochet hook, draw up first loop in Colonial Buff stripe above one of the slipped sts. at top of first stripe, and work a Ch. St. to first row of Colonial Buff of next stripe, pull up a long loop in back of stripe then work a Ch. St. as before in

same st. to next stripe. Continue in this manner to last stripe. Break yarn, skip 1 st. then with a strand of color No. 1103, work another Ch. St. stripe in same manner. Skip 13 sts. and repeat from \*.

Finishing, see page 46. Sew jacket together with 1/2 inch seams and turn back 1/4 inch hems (indicated on charts by dotted lines). Face fronts with 1 1/2 inch matching grosgrain ribbon.



# Ledgewood

Illustrated on pages 4 and 5.

No. 201  
3 PIECE OLYMPIC AND  
SCOTCH SPORTS YARN  
COSTUME

Size 16

1 Pr. No. 3 M. M. Needles—14 inch  
—for jacket

Scale: 7 sts. to 1 inch  
9 rows to 1 inch

1 No. 2 Steel Circular Needle—29 inch  
—for skirt

Scale: 7 sts. to 1 inch

1 Pr. No. 4 M. M. Needles—18 inch  
—for coat

Scale: 5 sts. to 1 inch  
7 rows to 1 inch

Ribbing Scale: 7 sts. to 1 inch

1 No. 4 Steel Crochet Hook—for trim

## MINERVA OLYMPIC

Jacket—

Highland Tan No. 979..... 12 Balls

Skirt and Trim—

Regatta Blue No. 946..... 11 Balls

Total ..... 23 Balls

## MINERVA MODEEN

Trim—Red Orange No. 1616 2 Balls

## MINEVA SCOTCH SPORTS YARN

Coat—Regatta Blue No. 749 6 Skeins

Chart symbols explained on page 45.

The Highland Tan jacket is worked in Stockinette St. with 1/4 inch hems (indicated on charts by dotted lines) and Ch. St. stripes worked after the garment is completed. The pockets are lined with blue silk. The Regatta Blue skirt is worked in Stockinette St. The Regatta Blue coat is worked in Stockinette St. (using the purled side as the right side) with panels of ribbing pattern (indicated on charts by dotted lines).

**JACKET:** Follow chart for Right Front. Buttonholes are 5 sts. wide and 4 sts. from front edge. To work buttonholes, see page 45. To work pocket opening, work over 23 sts., bind off 24 sts. and continue across row. Next row, cast on 24 sts. directly over the bound off sts. of previous row.

Work Left Front to correspond, omitting buttonholes and working pocket opening in same manner as on right front.

Follow charts for Back, Sleeves and 2 Regatta Blue Pocket Tabs.

Finishing, see page 46. Work Ch. St. stripes as indicated on st. chart. To work Ch. St. stripes see page 45. Turn back 1/4 inch hems on all edges (indicated on charts by dotted lines) and face fronts with 1 1/2 inch matching grosgrain ribbon. Work 1 row S. C. around pocket tabs. Sew pocket tabs to jacket 1/2 inch above pocket openings.

**SKIRT:** Follow Standard Skirt Chart No. 2 on page 45. For finishing and casing for elastic, see page 46.

**COAT:** (Chart on page 44) Follow chart for Right Front, working first 21 sts. in ribbing pattern as follows:

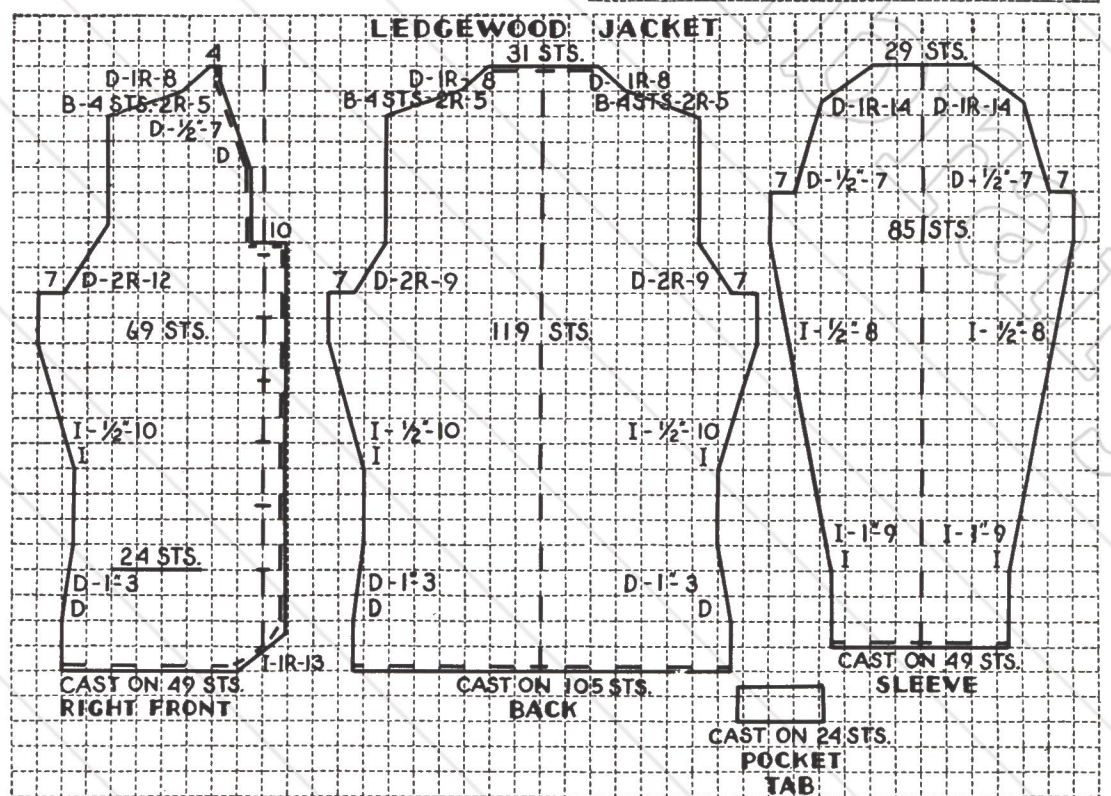
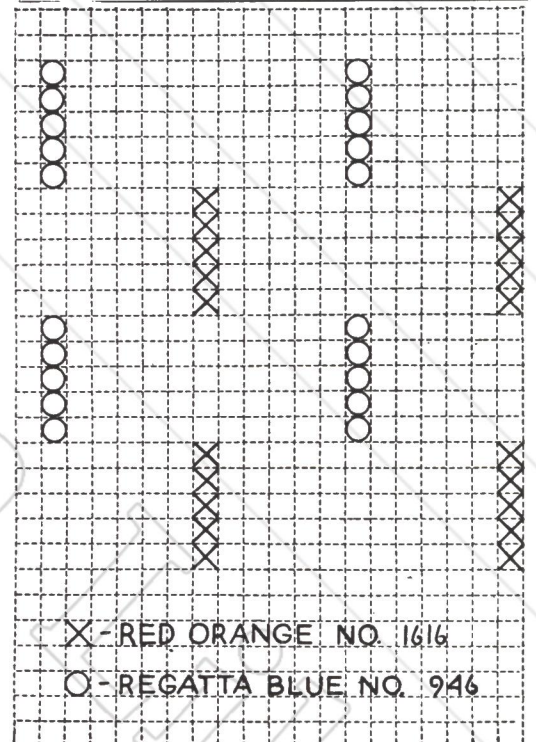
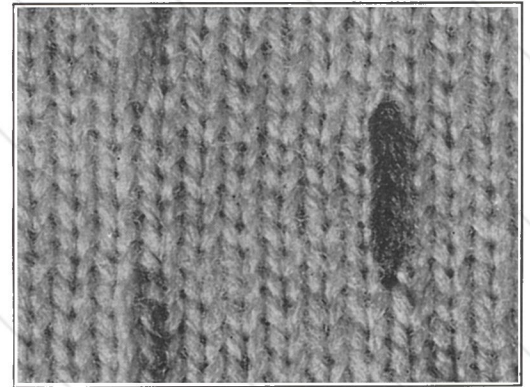
Row 1—\* K. 1, P. 1, repeat from \* for 21 sts. ending K. 1. P. remaining sts.

Row 2—K. across to last 21sts. \* P. 1, K. 1, repeat from \* ending P. 1.

Work Left Front to correspond. Follow charts for Back (working

center 41 sts. in ribbing pattern) and Sleeves (working center 21 sts. in ribbing pattern).

Finishing, see page 46. Sew shoulder seams and underarm seams. Sew sleeves in place, sewing saddle over shoulder seams.





# General Instructions

## SYMBOLS USED ON CHARTS

- I—means to Increase 1 st. at point indicated.
- I—1R-8—means to Increase 1 st. every row, 8 times.
- I—2R-8—means to Increase 1 st. every 2nd row, 8 times.
- I—½"-8—means to Increase 1 st. every ½ inch, 8 times.
- D—means to Decrease.
- B—means to Bind off.
- C—means to Cast on.
- C-4 sts.-2R-10—means to Cast on 4 sts. every 2nd row, 10 times.
- B-4 sts.-2R-10—means to Bind off 4 sts. every 2nd row, 10 times.

## ABBREVIATIONS USED IN KNITTING AND CROCHET INSTRUCTIONS

- |   |                     |
|---|---------------------|
| K.—Knit                                     | Tog.—Together       |
| P.—Purl                                     | Sl. St.—Slip Stitch |
| Ch.—Chain                                   | M. M.—Millimeter    |
| S. C.—Single Crochet                        | St.—Stitch          |
| D. C.—Double Crochet                        | Y. O.—Yarn Over     |
| Tr. C.—Treble Crochet                       |                     |
| P.S.S.O.—Pass Slip Stitch Over Knit Stitch. |                     |

**BUTTONHOLES:** Are indicated on chart by a dash—representing width of buttonhole. Bind off the given number of stitches, this same number of stitches to be cast on, on the next row directly over the bound off sts. Work around buttonholes in Buttonhole St.

To make crocheted buttonholes—Ch. the desired number of sts., skip the same number of sts. on previous row and on next row, work over the Ch. sts.

**KNIT-IN POCKETS:** Work pocket facing (back of pocket) as indicated on chart, ending with a K. row and put sts. on a st. holder. Work pocket opening as indicated on chart, binding off pocket sts. on a K. row. On next row, work across to pocket opening, work pocket sts. from st. holder and continue across row. After garment is completed, sew edges of facing to garment.

Knit-in pockets in a raglan started at the neck: Work to pocket opening, slip pocket sts. on a st. holder, cast on the same number of sts. and continue to follow chart. When garment is completed, pick up sts. from st. holder and work the required number of inches.

**MARKERS:** When the instructions say to slip a marker on needle, use a small safety pin, or a tied loop of yarn in contrasting shade, slip on right hand knitting needle, and on next row, slip from one needle to the other and continue work.

**TO WORK A CHAIN STITCH STRIPE:** To work chain st. stripe, hold yarn in back of work, insert crochet hook in space between stitches at start of stripe, draw yarn through this space, \* insert hook in space on next row, following direction of stripe, draw yarn through this

space and through stitch on hook, repeat from \* for desired length. Be careful not to draw stitches taut.

**TO MITER V NECK:** After picking up necessary number of sts. around neck opening, decrease at point of V by K. 2 tog., 2 times every row.

**PLEATS:** Bind off as indicated on chart and on next row, work across row, joining the sts. each side of those bound off (do not cast on sts. over the bound off sts.). Sew pleats in place after garment is completed.

**CROCHETED BELT:** Make a chain 29 inches or the desired length, then work around chain in S. C. increasing at corners. Continue in this manner until belt measures 1½ inches or desired width. Face with matching grosgrain ribbon.

**KNOTS:** When very little loss of yarn is involved, place knot at end of row. If loss of yarn is too great, do not make knot but have a four inch (4") end. Work next stitch from the new ball also leaving a four inch end. After 4 or 5 rows have been worked over this joining, tie these ends firmly.

**MONK'S CORD:** Cut yarn of sufficient length and number of strands required, divide into two groups and fasten together at one end. Make a slip loop on forefinger of left hand with one strand near point of joining, holding slip knot between thumb and second finger, \* insert forefinger of right hand through loop from back or left side and draw up a loop of other strand. Keeping this loop on right forefinger, change slip knot to right hand, dropping loop off left forefinger, and draw first strand taut, closing first loop. Repeat from \* inserting left forefinger in back of loop and continue to alternate in this manner.

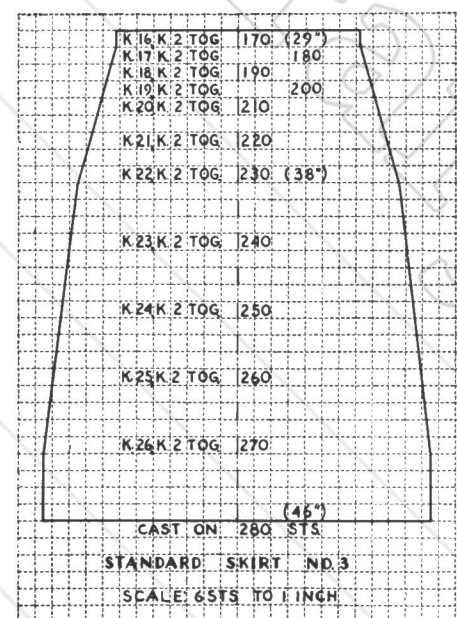
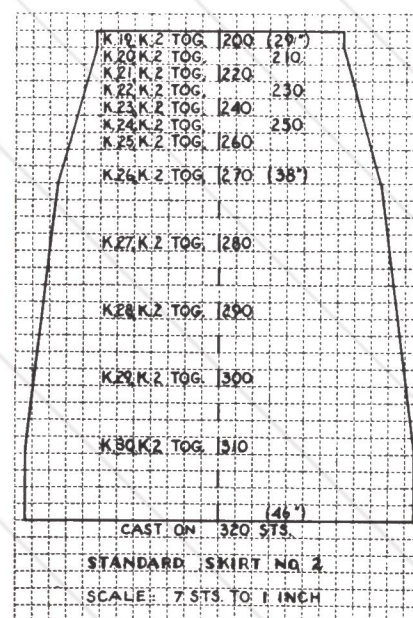
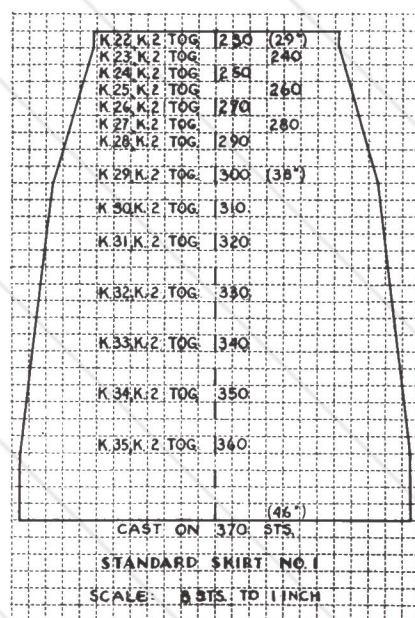
**WHEN KNITTING 2 PARTS OF A GARMENT** that correspond, it is advisable to work them at the same time on the same needle, using 2 balls of yarn.

**CAUTION—NEEDLES:** Always clean your needles before working. This prevents a dark line in your work.

**POMPONS:** Wind yarn around cardboard the size of pompon desired. Slip from cardboard, tie securely in center and clip both ends, then trim in shape of ball.

**TASSELS:** Wind yarn around cardboard the size of tassel desired. Tie firmly at one end, slip from card and wind yarn several times around the loops near the top. Trim the ends evenly.

## STANDARD SKIRT CHARTS



## FINISHING A NEW GARMENT

**BLOCKING:** Pin each piece, wrong side out, on a pressing board in exactly the line you wish to retain. Use a damp cloth and moderately hot iron, press lightly, allowing the steam to go through the garment. Lay it on a flat surface until thoroughly dry. The skirt may be blocked in the same manner or on a Minerva Skirt Blocker which has been adjusted to the proper measurements.

**JOINING:** Sew pieces together, being careful that the edges meet evenly. Be careful to match rows wherever possible, easing in any extra fullness. In sewing in the sleeves be sure to ease the fullness toward the top. When sewing seams in a skirt, place on a flat surface and pin edges evenly, then sew tightly to prevent sagging. Another method of sewing the garment together is to pin edges, easing in any extra fullness, then sew a narrow dressmaker's seam, using a back st. Press seams lightly.

**TAPING:** To insure the shoulders retaining their fit, it is advisable where possible, to tape the shoulder seams. This prevents sagging.

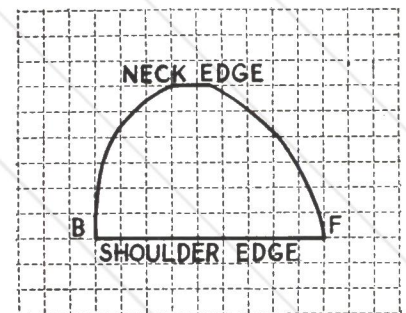
**BEADING:** Fasten yarn, Ch. 5, \* skip 2 sts., 1 D. C. in

next st., Ch. 2, repeat from \* around edge of garment, fasten yarn in 3rd Ch. of the Ch. 5.

**CASING FOR ELASTIC** (inside at waistline): Fasten yarn, \* Ch. 5, skip 2 sts., 1 slip st. in st.  $\frac{1}{2}$  inch below next st., Ch. 5, skip 2 sts., 1 slip st. in next st.  $\frac{1}{2}$  inch above, repeat from \*.

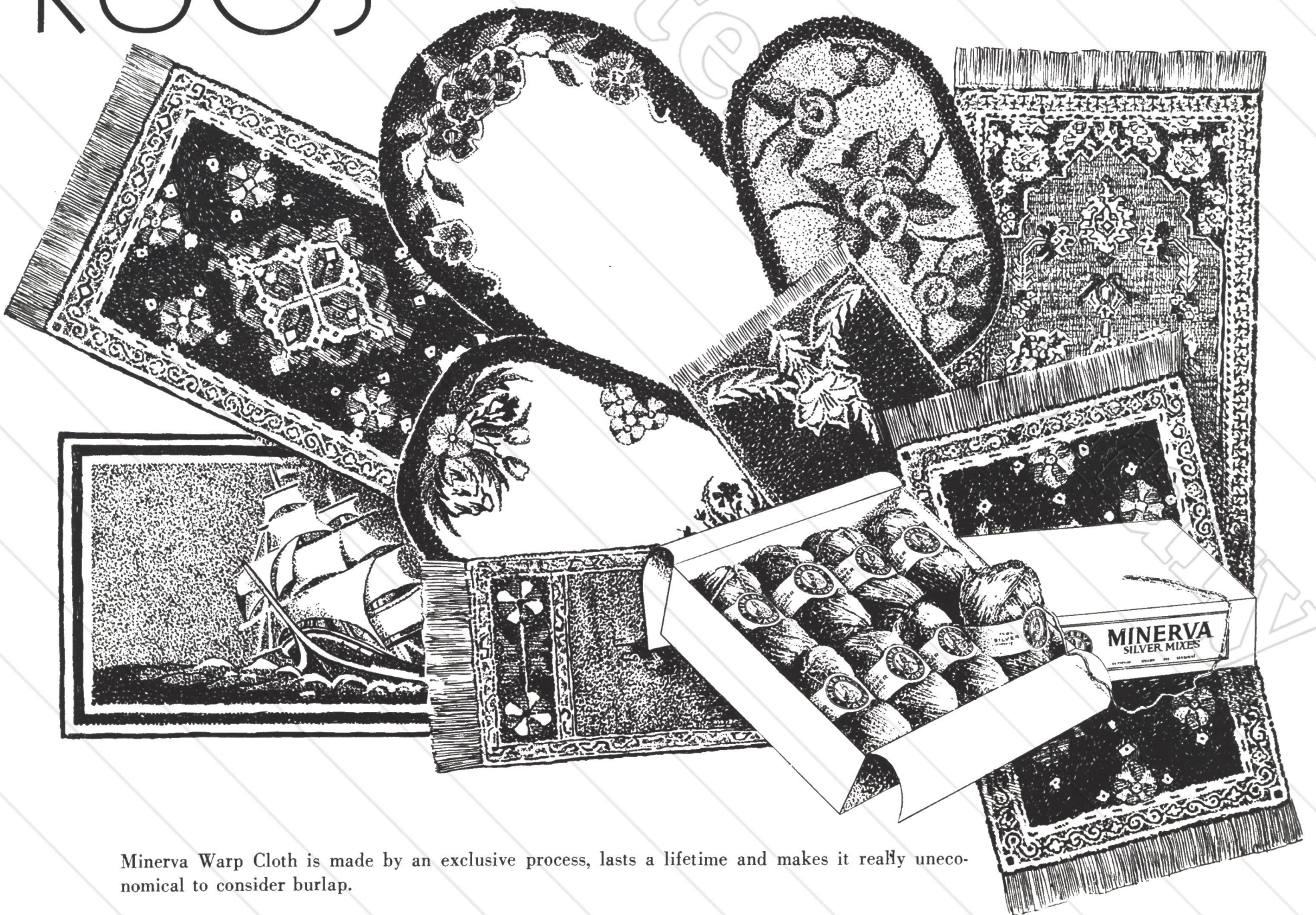
**EDGES:** The bottom of skirt and edges of blouse, sleeves, collar and pocket openings are generally finished with several rows of S. C., when no other border is used. When crocheting around bottom of skirt, work first row, skipping every 6th st. Work all other rows in every stitch. With slashed skirt, continue crocheting along edges of slash and face with matching grosgrain ribbon. Sew underlap in place.

**SHOULDER PADS:** Cut a pattern actual size following small chart. Cut 2 pieces from light weight material and sew together with  $\frac{1}{2}$  inch seams and 1 layer of padding between. Sew in shoulders as indicated by letters on chart, B—back, F—front.



# RUGS

Minerva rugs have long been a byword in the home arts field ♦ ♦ ♦ Minerva Homecraft Yarn untwists itself on the surface when clipped, giving a fine luxurious texture never before achieved in rug making ♦ ♦ ♦ Minerva Silver Mixes reproduce the critical shades of the finest Orientals.



Minerva Warp Cloth is made by an exclusive process, lasts a lifetime and makes it really uneconomical to consider burlap.

# Interchangeable Yarns

## INTERCHANGEABLE—GROUP No. 1

- Cuddle Yarn** (2 fold— $\frac{3}{4}$  oz. ball)—About 183 yds. to ball.
- Featherdown** (3 fold—1 oz. ball)—About 256 yds. to ball.
- Lustre Crepe** (2 fold—1 oz. ball) Novelty yarn—About 170 yds. to ball. Wool and Rayon.
- Lustre Flake** (1 oz. ball) Novelty yarn—About 123 yds. to ball. Wool and Rayon.
- Velveen** (2 fold—2 oz. ball) Novelty yarn—About 300 yds. to ball. Wool and Rayon.
- Vicuna** (2 fold— $\frac{1}{2}$  oz. ball)—About 105 yds. to ball.
- Woolgora** (2 fold— $\frac{1}{2}$  oz. ball)—About 131 yds. to ball.

## INTERCHANGEABLE—GROUP No. 2

- Arctic Modeen** (4 fold—1 oz. ball)—About 148 yds. to ball. Wool and Rayon.
- Heather Flake** (4 fold—1 oz. ball) Novelty yarn—About 147 yds. to ball.
- Heatherdown** (4 fold—1 oz. ball)—About 148 yds. to ball.
- Lustre Wool** (2 fold— $1\frac{5}{8}$  oz. ball)—About 227 yds. to ball. Rayon and Wool.
- Mirvena** (2 fold—2 oz. ball) Novelty yarn—About 250 yds. to ball. Rayon and Wool.
- Modeen** (4 fold—1 oz. ball)—About 148 yds. to ball.
- Olympic Yarn** (3 fold—1 oz. ball)—About 140 yds. to ball.
- Pompadour** (2 fold—1 oz. ball)—About 128 yds. to ball. Wool and Rayon.
- Shetland Floss** (2 fold—1 oz. ball)—About 157 yds. to ball.
- Spanish Worsted** (4 fold— $1\frac{3}{4}$  oz. ball)—About 229 yds. to ball.

## INTERCHANGEABLE—GROUP No. 3

- Germantown Zephyr** (4 fold—1 oz. ball)—About 105 yds. to ball.
- Knitting Worsted** (4 fold— $1\frac{3}{4}$  oz. ball)—About 152 yds. to ball.
- Silver Mixes** (4 fold— $1\frac{5}{8}$  oz. ball)—About 127 yds. to ball. Rayon and Wool.

## INTERCHANGEABLE—GROUP No. 4

- Chalimar**—About 800 yds. to skein.
- Mellosheen**—About 700 yds. to skein.

## NON-INTERCHANGEABLE YARNS

- Boucle** (1 oz. ball) Novelty Rayon—About 85 yds. to ball. All rayon.
- Franco Fleck** (1 oz. tube)—About 525 yds. to tube. Wool and Rayon.
- Homecraft Rug Yarn** (4 fold—1 oz. spool)—About 25 yds. to spool.
- Homespun Nub Yarn** (2 fold—2 oz. ball) Novelty yarn—About 160 yds. to ball.
- Lucon Loop** (1 oz. tube)—About 272 yds. to tube. All rayon.
- Needlepoint Yarn** (4 fold— $\frac{1}{2}$  oz. skein)—About 34 yds. to skein.
- Newport Nub** (1 oz. tube)—About 735 yds. to tube. Rayon and Silk.
- Saxony** (2 fold— $\frac{3}{4}$  oz. ball)—About 250 yds. to ball.
- Saxony** (3 fold— $\frac{3}{4}$  oz. ball)—About 165 yds. to ball.
- Saxony** (4 fold— $\frac{3}{4}$  oz. ball)—About 125 yds. to ball.
- Scotch Sports Yarn** (3 fold—4 oz. skein)—About 280 yds. to skein.
- Shen Silk** (1 oz. tube)—About 302 yds. to tube.
- Tapestry Yarn** (4 fold—1 oz. skein)—About 88 yds. to skein.

## NEEDLE GAUGE COMPARISONS

MINERVA MILLIMETER SIZES ARE LISTED BELOW SHOWING THE CLOSEST AVAILABLE SIZES IN OTHER GAUGES

Minerva M. M.	American Standard	Circular and Straight Steel	Double Point Steel
	0	0	13
$2\frac{1}{2}$	1	1	12
	2	2	11
3	3	3	10
$3\frac{1}{2}$	4	4	9
4	5	5	8
$4\frac{1}{2}$	6	6	
	7	7	
5	8	8	
$5\frac{1}{2}$	9		
6	10		
7	11		
8	12		
9	13		



## QUANTITY COMPARISON

MINERVA YARNS	MINERVA NOVELTY YARNS			
	Franco Fleck 1 Tube to	Lucon Loop 1 Tube to	Newport Nub 1 Tube to	Shen Silk 1 Tube to
Featherdown	2 Balls	1 Ball	3 Balls	$1\frac{1}{2}$ Balls
Lustre Wool	$2\frac{1}{2}$ Balls	1 Ball	$2\frac{1}{2}$ Balls	.....
Mirvena	.....	1 Ball	3 Balls	.....
Modeen	$3\frac{1}{2}$ Balls	2 Balls	.....	.....
Olympic	.....	2 Balls	5 Balls	$2\frac{1}{2}$ Balls
Scotch Sports Yarn	$1\frac{1}{2}$ Skeins	.....	3 Skeins	1 Skein
Shetland Floss	$3\frac{1}{2}$ Balls	2 Balls	5 Balls	2 Balls
Velveen	$1\frac{1}{2}$ Balls	1 Ball	.....	.....

This comparison is based on the tension used by the average knitter. Therefore, these are approximate quantities and may vary slightly in accordance with the way you knit. An easy estimate of the number of tubes you will require, for use with the above or any other Minerva Yarn, can be made by comparing the yardage of the two yarns you plan to use. Due to the elasticity of the regular Minerva Yarns, you will require slightly more yardage of them than of the Novelty Yarn with which they are to be combined.

Use MINERVA M. M. Ivory Knitting Needles and Crochet Hooks and Standard sizes of Steel Needles and Crochet Hooks for all Minerva Instructions

JAMES LEES & SONS COMPANY, Bridgeport, Penna.

NEW YORK OFFICE  
230 Fifth Avenue

CHICAGO OFFICE  
37 S. Wabash Ave.

SAN FRANCISCO OFFICE  
334 Sutter Street



# needlecraft news

Needlepoint is sweeping the country



prophesied



just as Stitches & Styles so wisely

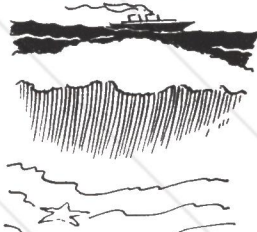
it would. And the ladies all seem to prefer to work

their own designs, and not just fill in backgrounds. One said if she was an artist she wouldn't want

someone to have all the fun of painting the cows and trees and just leaving the grass for her to fill

in. And that's just how it is when you only fill in the background of needlepoint. And now another

healthy wave



is on from Nome



to Palm Beach.



The old art of rug making

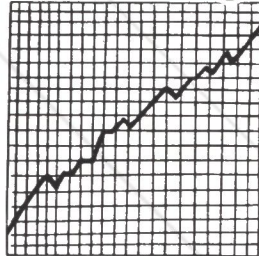


is staging a comeback.



Style knitting is

showing an



upward trend which even this so-called recession can't stifle—thanks

to the ladies. And cottons, always popular, have been taken into the Minerva family.

Speaking of cottons



we recently were gratified to hear that an independent research

organization found the Minerva Cotton Yarns were selected for quality and color by 71%

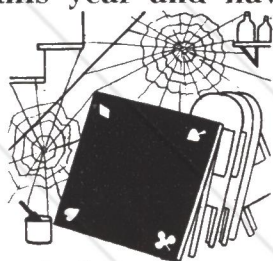
of all women interviewed.



So it looks as though the ladies are going to do

useful things this year and have something to show for their time, and at this rate card tables will

be folded up



and bridge teachers will be twiddling their thumbs because Minerva

needles will be clicking away making things constructive and beautiful.

