

American Thread Co.
STAR BABY BOOK No. 148

25¢

BABIES

are such fun to dress

KNITTING CROCHETING
TATTING



*babies are
such fun to
dress*



...and especially when their sacques and hats and booties are made with lustrous DAWN Wools or Nylon.

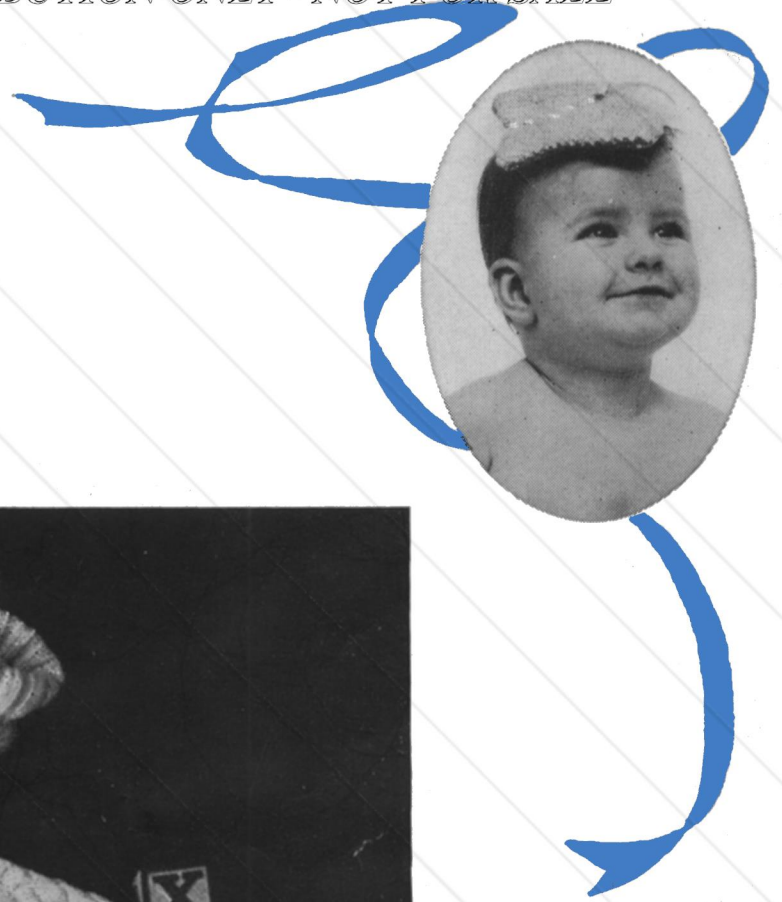
You'll find plain and fancy designs in our new book, both crocheted and knitted ... make them in any of the soft pastel shades or the bright gay colors in the large DAWN line ... but remember ... BABIES ARE SUCH FUN TO DRESS!



The American Thread Company 260 West Broadway • New York 13, N. Y.

PRINTED
IN
U.S.A.

A Set For Pet



KNITTED CABLE SET

1 year

Materials Required:

AMERICAN THREAD COMPANY
"DAWN" WOOL AND NYLON FINGERING
YARN

7 ounces Blue or color of your choice or
"DAWN" BABY YARN

6 ounces White or color of your choice

1 pr. knitting needles No. 1 and No. 2 OR ANY
SIZE NEEDLES WHICH WILL RESULT IN
STITCH GAUGE BELOW

7 buttons

GAUGE: for No. 2 needles

8 sts = 1 inch 10 rows = 1 inch

Continued on page 6





Crochet For Gay or Kay or Fay



SHELL STITCH BABY SET 6 months

Materials Required:
AMERICAN THREAD COMPANY
"DAWN" ORLON or ORLON POMPADOUR
HIGH BULK FINGERING YARN
5 ounces Pink and
"STAR" RAYON CROCHET, Article 700
1 ball White or colors of your choice
Plastic crochet hook size E
Steel crochet hook size No. 7
2 yds. 1/4 inch ribbon
1 1/2 yds. 5/8 inch ribbon

SACQUE

Orlon is worked with size E hook and Rayon Crochet with No. 7 hook. With Pink chain (ch) 75 (about 13 inches), double crochet (dc) in 4th stitch (st) from hook, 1 dc in each remaining st of ch (73 sts), ch 3 to turn all rows. 2nd ROW: (Ch 3 counts

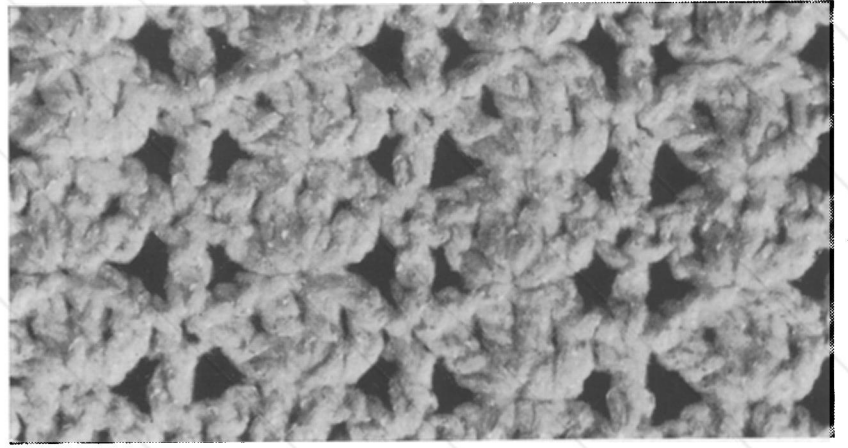
as 1st dc), 1 dc in each of the next 8 dc, 2 dc in next dc, * 1 dc in next dc, 2 dc in next dc, repeat from * to within last 9 sts, 1 dc in each of the next 9 sts (101 sts). 3rd ROW: Work in dc increasing 1 st at center. 4th ROW: 1 dc in each of the next 9 dc, 2 dc in next dc, * 1 dc in each of the next 2 dc, 2 dc in next dc, repeat from * to within last 10 sts, 1 dc in each remaining st (130 sts). 5th ROW: Work in dc decreasing 1 st at center (to decrease: yarn over hook, insert in st, pull loop through, yarn over and work off 2 loops, yarn over hook, insert in next st, pull loop through, yarn over and work off 2 loops, yarn over and work off all loops at one time). This completes the yoke. 6th and 7th ROWS: 1 dc in each of the next 8 dc, * skip next dc, 3 dc with ch 1 between each dc in next dc, skip next dc, dc in next dc, repeat from * to within last 8 sts, 1 dc in each of the next 8 sts (the 1st and last 9 sts are the border sts). 8th ROW: 1 dc in each of the next

8 dc, * skip 1 dc, 4 dc with ch 1 between each dc in next dc (shell), skip next dc, dc in next dc, repeat from * to within last 8 sts, 1 dc in each of the next 8 sts. 9th and 10th ROWS: 1 dc in each of the next 8 dc, * shell in center ch 1 of next shell, skip next 2 dc of same shell, dc in next dc, repeat from * to within last 8 sts, 1 dc in each of the next 8 sts. 11th ROW: 1 dc in each of the next 8 dc, * shell in next shell, dc in next single dc, repeat from * twice, shell in next shell, ch 7, skip next 4 shells, shell in next shell (Armhole), * dc in next single dc, shell in next shell, repeat from * 10 times, ch 7, skip next 4 shells, shell in next shell (Armhole), * dc in next single dc, shell in next shell, repeat from * 3 times, 1 dc in each of the next 9 sts. 12th ROW: 1 dc in each of the next 8 sts, * shell in next shell, dc in next single dc, repeat from * twice, shell in next shell, dc in 1st st of ch, skip next 2 sts, shell in next st, skip next 2 sts, dc in next st, shell in next shell, * dc in next single dc, shell in next shell, repeat from * 10 times, dc in 1st st of ch, skip next 2 sts, shell in next st, skip next 2 sts, dc in next st, shell in next shell, * dc in next single dc, shell in next shell, repeat from * twice, 1 dc in each of the next 9 sts. NEXT 11 ROWS: Same as 9th row, cut yarn.

SLEEVES: With wrong side of 10th row toward you and working on opposite side of ch 7 and around Armhole, attach Pink in center st of ch, ch 4, 3 dc with ch 1 between each dc in same space, dc in base of next single dc, shell at base of next shell, * dc in next single dc, shell in next shell, repeat from * 3 times, dc in next single dc, shell in base of next shell, dc in base of next single dc, join in 3rd st of ch, turn (7 shells). 2nd ROW: Slip stitch (sl st) to next dc, ch 3, shell in next shell, * dc in next single dc, shell in next shell, repeat from * all around, join in 3rd st of ch. NEXT 11 ROWS: Ch 3, shell in next shell, * dc in next single dc, shell in next shell, repeat from * all around, join, turn. 12th ROW: * Ch 2, sl st over center ch 1 of next shell, ch 2, dc in next single dc, repeat from * 5 times, ch 2, sl st over center ch 1 of next shell, ch 2, join, do not turn. **BEADING:** Ch 3 and work 2 dc in each loop and 1 dc in each dc, join, cut yarn. Attach Rayon crochet in same space, * ch 3, sl st in next dc, repeat from * all around, ch 3, join, cut thread.

NECK EDGE BEADING: With right side of work toward you and working on opposite side of starting ch, attach Pink in 1st st at Neck Edge, ch 3 and work 1 dc in each st, cut yarn.

TRIMMING: With right side of work toward you attach Rayon Crochet in 1st st at Neck Edge, working around Neck Edge, * ch 3, sl st in next st, repeat from * to opposite end, working down side of Front, ch 3, 2 dc in same space, sl st in base of same st, * ch 3, 2 dc in same space, sl st in base of same st, repeat from * to end of Front; working along Border sts, * ch 3, 2 dc in same space, skip 1 dc, sl st in next dc, repeat from * 3 times; working



up side of border sts, * ch 3, 2 dc in same space, sl st in top of next dc, repeat from * 17 times; working around last row of Yoke, * ch 3, 2 dc in same space, skip 1 dc, sl st in next dc already worked in, repeat from * 55 times. Work other Front to correspond, join, cut thread. Lace $\frac{1}{4}$ inch ribbon through Beading at Neck and Sleeve Edges.

BOOTIES

SOLES: With Pink ch 14, 3 sc in 2nd st from hook, 1 sc in each of the next 11 sts of ch, 3 sc in end st, working on opposite side of ch, 1 sc in each of the next 11 sts, do not join this or following rounds. Place a marker at the beginning of each round. 2nd ROUND: 2 sc in each of the next 3 sc, 1 sc in each of the next 11 sc, 2 sc in each of the next 3 sc, 1 sc in each of the next 11 sc. 3rd ROUND: * 1 sc in next sc, 2 sc in next sc, repeat from * twice, 1 sc in each of the next 12 sc, 2 sc in next sc, * sc in next sc, 2 sc in next sc, repeat from * once, 1 sc in each of the next 11 sc. 4th and 5th ROUNDS: 1 sc in each sc on sides increasing 3 sc evenly spaced around each end in each round (52 sc in last round), then sl st in each st, cut yarn.

UPPER SECTION: With Pink ch 7, dc in 4th st from hook, 1 dc in next st of ch, 2 dc in next st, 5 dc in next st, working on opposite side of starting ch, 2 dc in next st, 1 dc in each of the next 3 sts, ch 1, in same space work 5 dc with ch 1 between each dc (shell), ch 1, join in 3rd st of ch, ch 3, do not turn. 2nd ROW: 1 dc in each of the next 3 dc, 2 dc in each of the next 7 dc, 1 dc in each of the next 4 sts, ch 3, skip the shell, join to 3rd st of ch at beginning of row being careful not to twist ch, ch 3, turn. 3rd ROW: 1 dc in each st of ch and 1 dc in each dc, join in 3rd st of ch (53 sts), turn. 4th ROW: Ch 3, 1 dc in each dc, join, cut yarn leaving a length for sewing. Fold Sole in half lengthwise, mark each end for center of Toe and Heel. Do the same with the upper section. Place the 2 sections together having the right side of Sole and the wrong side of last row of Upper Section to the outside. Overcast the 2 sections together. **BEADING:** With right side of Bootie toward you attach Pink in last ch 1 of shell, working along opposite side of ch 3, work 1 dc in each st, join in 1st st of shell, cut yarn. **EDGE:** Attach Rayon Crochet in same space, * ch 3, sl st in next dc, ch 3, sl st in next ch 1, repeat from * 4 times, * ch 3, sl st in next dc, repeat from *

Continued on page 6

Continued from page 5

all around, ch 3, join, cut thread. Lace ribbon through Beading bringing both free ends up through small hole at base of shell, tie in a Bow.

CAP

With Pink ch 75, dc in 4th st from hook, 1 dc in each remaining st of ch, ch 3 to turn all rows (73 sts). **NEXT 2 ROWS:** 1 dc in each st. **4th ROW:** Working in front loop of sts, * skip next 2 sts, shell in next st, skip next 2 sts, dc in next st, repeat from * across row. **NEXT 7 ROWS:** * Shell in center st of next shell, dc in next single dc, repeat from * across row working last dc in 3rd st of ch at end of row, cut yarn, turn. **12th ROW:** Attach Pink in 5th single dc, ch 3, * shell in center st of next shell, dc in next single dc, repeat from * 3 times, turn (back section). **NEXT 7 ROWS:** * Shell in center st of next shell, dc in next single dc, repeat from * 3 times, cut yarn. Sew each side of Back Section to base of the 4 shells at each end of 11th row leaving the upper part of shells free. With right side of Cap toward you attach Pink in 1st st at Neck Edge, ch 4 (counts as 1st treble crochet [trc]) working along Neck Edge work 46 trc (Beading), cut yarn.

TRIM: Attach Rayon Crochet in last st worked, ch 3, sl st over side of same st, * ch 3, sl st in next st, repeat from * all around, join, cut thread.

RUFFLE: With right side of work and back section of Cap toward you attach Pink in free loop of 1st st of 3rd row, ch 3, * skip next 2 sts, 5 dc with ch 1 between each dc in next st (5 dc shell), skip next 2 sts, dc in next st, repeat from * across row (12 shells), ch 3, turn. **2nd ROW:** 5 dc shell in center dc of next shell, * 3 dc shell in next single dc, 5 dc shell in center dc of next shell, repeat from * across row ending with dc in last st, cut yarn, do not turn. **3rd ROW:** Attach Rayon Crochet in 1st st, * ch 3, sl st in next dc, repeat from * across row, cut thread. Lace narrow ribbon through 1st row of Cap, sew each end. Lace 5/8 inch ribbon through Beading at Neck Edge leaving a 12 inch length at each end. Bring each end of Ruffle forward and sew to end of Cap. Finish with Bows as illustrated.



Continued from page 3

SWEATER

BACK: With No. 1 needles cast on 88 stitches (sts) and work in ribbing of Knit (K) 2, Purl (P) 2 for 1 1/4 inches. Change to No. 2 needles and work in stockinette st (K 1 row, P 1 row) until Back measures 7 inches from beginning or length desired to Underarm. **SHAPE ARMHOLES:** Continuing in stockinette st, bind off 4 sts at beginning of next 2 rows. Decrease 1 st at beginning of next 6 rows, then work even until Armholes measure 3 3/4 inches from 1st decreasing point. **SHAPE SHOULDERS:** Bind off 8 sts at beginning of next 6 rows. Bind off remaining sts.

CABLE PATTERN: P 2, K 18, P 2. **2nd ROW:** K 2, P 18, K 2. **3rd ROW:** P 2, * slip (sl) 3 sts on a double pointed needle (dpn) and hold in back of work, K next 3 sts, K the 3 sts from dpn, repeat from * twice, P 2. **4th, 6th and 8th ROWS:** Same as 2nd row. **5th ROW:** Same as 1st row. **7th ROW:** P 2, K 3, * sl 3 sts on a dpn and hold in front of work, K next 3 sts, K the 3 sts from dpn, repeat from * once, K 3, P 2. Repeat these 8 rows for pattern.

RIGHT FRONT: With No. 1 needles cast on 49 sts. Work 1st 5 sts at front edge for border in garter st (K each row) and work remaining 44 sts in ribbing of K 2, P 2 for 1 1/4 inches increasing 8 sts in last row of ribbing as follows: starting at side edge, work 26 sts, * increase 1 st (to increase: pick up yarn between 2 sts), work 2 sts, repeat from * 7 times, work to end of row. Change to No. 2 needles, K 5, work 1st row of cable pattern over next 22 sts, K 30. **NEXT ROW:** P 30, work 2nd row of Cable Pattern over next 22 sts, K 5. Continue in same manner working 5 border sts in garter st, 22 sts in cable pattern and remaining sts in stockinette st until Front measures same as Back to Underarm, ending at Armhole edge. **SHAPE ARMHOLE:** Bind off 4 sts at beginning of next row, then decrease 1 st at Armhole edge every other row 3 times, then work even until Armhole measures 2 3/4 inches from 1st decreasing point ending at Front edge. **SHAPE NECKLINE:** Bind off 8 sts, * K 2 tog, pass st over, repeat from * 4 times (18 sts bound off), work to end of row, then work 1 row even. **NEXT ROW:** Sl 1, K 2 tog, pass sl st over (p.s.s.o.), * K 2 tog, pass st over, repeat from * twice, work to end of row. Work even on remaining 24 sts until Armhole measures same as Back. Bind off Shoulders same as Back. Place Markers for 6 Buttons evenly spaced having 1st marker 1/2 inch from Lower edge and last marker 1/2 inch from Neck edge.

LEFT FRONT: Work to correspond to right Front reversing shaping and placing of Cable Pattern. Work buttonholes to correspond to markers. **BUTTONHOLES:** Starting at Front edge K 2, bind off 2 sts; in next row cast on 2 sts over the bound off sts.

SLEEVES: With No. 1 needles cast on 50 sts and work in ribbing of K 2, P 2 for 1 1/4 inches increasing

6 sts in last row of ribbing as follows: work 12 sts, increase 1 st, work 6 sts, increase 1 st, * work 4 sts, increase 1 st, work 6 sts, increase 1 st, repeat from * once, work to end of row. Change to No. 2 needles, K 17, work 1st row of Cable Pattern over next 22 sts, K to end of row. NEXT ROW: P 17, work 2nd row of Cable Pattern over next 22 sts, P to end of row. Continue in same manner until Sleeve measures $7\frac{3}{4}$ inches, working Cable Pattern over the 22 center sts and remaining sts in stockinette st increasing 1 st on each side every inch 5 times. SHAPE SLEEVE: Keeping pattern even bind off 4 sts at beginning of next 2 rows, then decrease 1 st each side every row until 22 sts remain. NEXT ROW: Sl 1, work 2 tog, p.s.s.o., work to within 3 sts, sl 1, work 2 tog, p.s.s.o., repeat last row twice. Bind off remaining sts.

FINISHING: Block each section. Sew Underarm, Shoulder and Sleeve seams. Sew Sleeves in position.

COLLAR: Attach yarn at Left Neckedge and with No. 2 needles pick up 106 sts around Neck. Work 1st and last 5 sts in garter st and remaining sts in ribbing of K 2, P 2 for $1\frac{1}{2}$ inches. Work 1 Buttonhole in Left Front Border, then work $\frac{1}{4}$ inch even, bind off. Fold Collar over so that one Button is used for last 2 Buttonholes. Sew Buttons in position.

BOOTIES

With No. 2 needles cast on 48 sts, work in ribbing of K 2, P 2 for $2\frac{1}{2}$ inches. BEADING: K 1, yarn over (yo), K 2 tog, repeat from * across row ending with yo, K 1. P 1 row (49 sts), then K 6, increase 1 st, K 4, increase 1 st, K 8, place these 20 sts on a stitch holder, K next 13 sts for Instep, place remaining 18 sts on another stitch holder. Work in stockinette st. for $1\frac{3}{4}$ inches on 13 Instep sts ending with a P row, cut yarn. Slip 20 sts from 1st holder on needle, attach yarn and pick up 13 sts on side of Instep, K across Instep sts, pick up 13 sts on other side of Instep, slip sts from other holder on needle, K 8, increase 1 st, K 4, increase 1 st, K 6 (79 sts), then P 1 row. NEXT ROW: K 2, work 1st row of Cable Pattern over next 22 sts, K 31, work 1st row of Cable Pattern over next 22 sts, K 2. Work 9 more rows always working 22 sts in Cable Pattern on each side of Bootie, then decrease as follows: K 2 tog, work in pattern to within 2 sts from center st, K 2 tog, K 1, K 1, sl 1, p.s.s.o., complete row ending with K 2 tog. Work 1 row even in pattern. Repeat last 2 rows twice keeping pattern uniform, bind off. Sew side and sole seams.

CAP

Starting at Neckedge with No. 1 needles cast on 62 sts, work in ribbing of K 2, P 2 for $\frac{1}{2}$ inch increasing 1 st every 3rd st 20 times in last row. Change to No. 2 needles. Work 1st and last 30 sts in stockinette st and 22 center sts in Cable Pattern until Cap measures $5\frac{1}{2}$ inches ending on wrong side. NEXT ROW: Work in pattern across 54 sts, sl 1, K 1, p.s.s.o., turn. Leave remaining left side sts on needle, * sl 1, work across 26 sts, P 2 tog, turn. Leave remaining right side sts on needle. Sl 1,

work 26 sts, sl 1, K 1, p.s.s.o., turn. Repeat from * until all right and left side sts are worked off. Leave the 28 center sts on needle, cut yarn. With right side of work toward you pick up 31 sts across right side; work across 28 sts as follows: K 3, P 2, * K 2 tog, repeat from * 3 times, K 2, * K 2 tog, repeat from * 3 times, P 2, K 3, pick up 31 sts across left side (82 sts). Work 5 rows in ribbing of K 2, P 2. Bind off to within 6 sts. Work in ribbing across these 6 sts for $4\frac{3}{4}$ inches for Strap. Work Buttonhole same as Left Front. Work $\frac{1}{4}$ inch more in ribbing, bind off. Sew Button in position.

TIE: Cut 4 strands of yarn about 36 inches long, twist tightly, fold in half and let twist itself. Finish Tie with tassels.

TASSELS: Wind yarn over $\frac{3}{4}$ inch cardboard 13 times, cut one end, then tie about $\frac{1}{4}$ inch from top, trim. Lace Tie through beading.

MITTENS

With No. 2 needles cast on 48 sts, work in ribbing of K 2, P 2 for $1\frac{1}{4}$ inches.

BEADING: K 1, * yo, K 2 tog, repeat from * across row ending with yo, K 1. P 1 row (49 sts). NEXT ROW: K 2, K 2 tog, K 3, K 2 tog, K 4, K 2 tog, K 3, K 2 tog, K 6, P 2, K 8, increase 1 st, K 9, P 2 (last 22 sts are 1st Cable Pattern row), K 2. NEXT ROW: P 2, work 2nd row of Cable Pattern across next 22 sts, P to end of row. Continue in same manner until Mitten measures $2\frac{1}{2}$ inches from Beading always working 22 sts in Cable Pattern and remaining sts in stockinette st, then decrease top of Mitten as follows: K 2 tog, K to within 4 sts from Cable Pattern, K 2 tog, sl 1, K 1, p.s.s.o., work next 22 sts in Cable Pattern, K 2 tog. Work 3 rows even in pattern. 5th ROW: Same as 1st decreasing row keeping pattern uniform. Work 1 row even in pattern; repeat last 2 rows once; then K 2 tog across next row. P 1 row. Cut yarn leaving an end. Thread yarn into needle and draw sts together, sew side seam. Work Tie and Tassels same as for Booties and lace through Beading.



CROCHETED BABY SET

6 months - 1 year

Materials Required:

AMERICAN THREAD COMPANY

"DAWN" BABY YARN or

{ "DAWN" SWEATER & SOCK YARN }

{ "SANFORLAN" WON'T SHRINK OUT OF FIT }

8 ounces White or colors of your choice

Steel Crochet Hook No. 0 OR ANY SIZE HOOK

WHICH WILL RESULT IN STITCH GAUGE BELOW.

2 yds. 1/2 inch ribbon

GAUGE: 3 patterns = 1 inch

JACKET

Chain (ch) 90, 1 double crochet (dc) in 4th stitch (st) from hook, 1 dc in each of the next 15 sts of ch, 5 dc in next st, 1 dc in each of the next 8 sts, 5 dc in next st, 1 dc in each of the next 34 sts, 5 dc in next st, 1 dc in each of the next 8 sts, 5 dc in next st, 1 dc in each of the next 17 sts, ch 1, turn. 2nd ROW: 1 sc in each dc working 3 sc in each of the 4 corner sts and 1 sc in end ch (ch 3 counts as 1 dc), (2 increases at each Sleeve), ch 3, turn. 3rd ROW: 1 dc in each sc working 5 dc in each of the 4 corner sts, ch 1, turn. Repeat last 2 rows 4 times. 12th ROW: 1 sc in each st of Front and Back leaving 42 sts free for each Armhole (141 sc), ch 1, turn. 13th ROW: 1 sc, 1 dc in 1st sc, * skip next sc,



Cute for Kate
Smart for Bart



1 sc, 1 dc in next sc, repeat from * across row, ch 1, turn. 14th ROW: 1 sc, 2 dc in 1st sc, * 1 sc, 2 dc in next sc, repeat from * across row, ch 1, turn. 15th ROW: 1 sc, 1 dc, in 1st sc, * 1 sc, 1 dc in next sc, repeat from * across row, ch 1, turn (these 2 rows form pattern). Repeat last 2 rows 18 times, then repeat 14th row once, cut yarn, (right side of garment).

SLEEVES: With wrong side of work toward you, attach yarn in 1st free dc, 1 sc in same st, * skip next dc, 1 sc, 1 dc in next dc, repeat from * all around Sleeve (22 patterns), join in 1st sc, ch 1, turn. 2nd ROW: 1 sc, 2 dc in same space, * 1 sc, 2 dc in next sc, repeat from * all around, join in 1st sc, ch 1, turn. 3rd ROW: 1 sc, 1 dc in same space, * 1 sc, 1 dc in next sc, repeat from * all around, join in 1st sc, ch 1, turn. Repeat last 2 rows 16 times, then repeat 2nd row of Sleeve once, ch 3, turn. 37th ROW: 1 dc in same space, * ch 1, 2 dc in next sc, repeat from * all around, ch 1, join in 3rd st of ch, ch 1, turn. 38th ROW: Ch 3, pulling loops of all dc up $\frac{1}{2}$ inch work 4 dc in same loop, * ch 2, sc in next loop, ch 2, 5 dc in next loop (shell), repeat from * all around ending to correspond, join, cut yarn.

NECK EDGE: Join yarn in 1st dc at Neck Edge on right side of work, 1 sc in same space, 1 sc in each dc all around, ch 3, turn. **BEADING:** 1 dc in 1st sc, * ch 1, skip 1 sc, 1 dc in each of the next 2 sc, repeat from * all around, turn. 3rd ROW: Sl st into 1st ch 1 loop, ch 3 and complete row same as 38th row of Sleeve. Lace ribbon through Beading at Sleeves and Neck Edge.

MITTENS

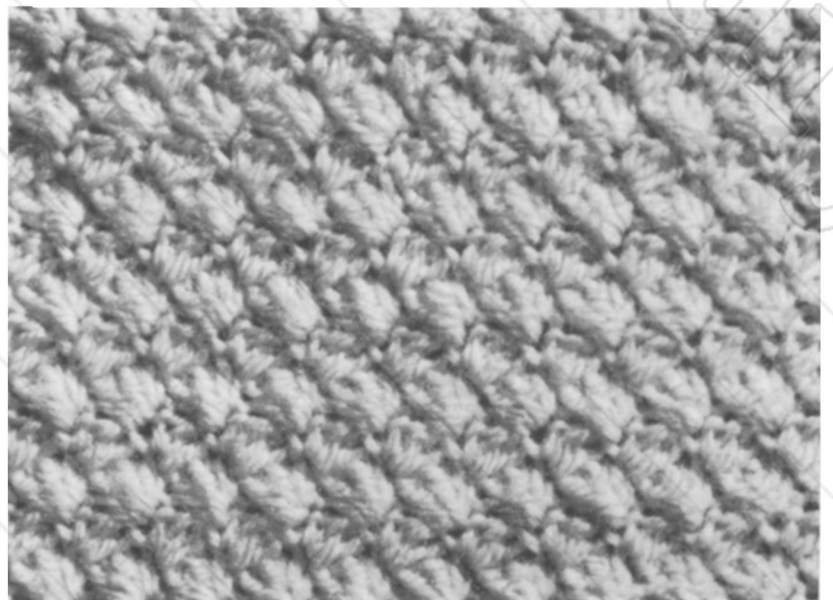
Ch 36, sc in 2nd st from hook, dc in same st, * skip 1 st, 1 sc, 1 dc in next st, repeat from * across row, ch 1, turn (18 patterns). **NEXT ROW:** * Skip 1 st, 1 sc, 2 dc in next sc, repeat from * across row, ch 1, turn. Work even in pattern until section measures 2 inches from beginning ending with 2nd row of pattern. **NEXT ROW:** Decrease 2 patterns evenly spaced across row but not along edges of work (to decrease: work 1 sc in sc, insert hook in same space, pull loop through, insert hook in next sc, pull loop through, yarn over hook and work off 2 loops twice), 1 pattern decreased, ch 1, turn. Work 1 row even, ch 1, turn. Repeat the last 2 rows twice. **NEXT ROW:** ** Sc in next st, decrease in next 2 sts (to decrease: * insert hook in next st, pull loop through, repeat from * once, yarn over and pull through all loops at one time), repeat from ** all around, join in 1st sc, cut yarn leaving an end. Thread into needle and draw top together. Sew Seam. **BEADING:** With wrong side of work toward you attach yarn at opposite side of starting ch, ch 4, skip 1 st, dc in next st, * ch 1, skip 1 st, dc in next st, repeat from * all around, ch 1, join in 3rd st of ch, turn. Work a row of shells all around same as on Jacket. Lace ribbon through Beading.

BOOTIES

Starting at Instep ch 10, 1 sc, 1 dc in 2nd st from hook, * skip 1 st of ch, 1 sc, 1 dc in next st, repeat from * across row, ch 1, turn. Work even in pattern until Instep measures $1\frac{1}{2}$ inches from beginning ending on right side, cut yarn. **NEXT ROW:** Bottom of Booties: Ch 12 and starting with 2nd row of pattern and right side of Instep work 6 patterns across side of Instep, 5 across lower edge and 6 across opposite side of Instep, ch 12, turn. **NEXT ROW:** Working in pattern work 6 patterns across ch, work in pattern all around Instep, 6 patterns across opposite ch, ch 1, turn (29 patterns). Work even in pattern until lower section of Bootie measures 2 inches from beginning, cut yarn. With wrong side of work toward you, attach yarn in 1st st of starting ch at top of Bootie and work 6 patterns across ch, work across 5 patterns at top of Instep, 6 patterns across opposite ch (17 patterns), ch 1, turn; then work even in pattern until top of Bootie measures $1\frac{1}{2}$ inches ending on right side of work, turn. **BEADING:** Ch 3, 1 dc in same space, * ch 1, 2 dc in next sc, repeat from * across row, ch 1, join in 3rd st of ch, turn. **NEXT ROW:** Slip stitch (sl st) into mesh and work a row of shells across top of Booties same as Jacket, join, cut yarn. Sew back seam. Lace ribbon through Beading.

CAP

Ch 70 and work 35 patterns across ch, ch 1, turn. Continue in pattern same as Jacket until section measures 6 inches from beginning, cut yarn. Fold section in half, then seam one edge. Join yarn in one corner and work a row of dc across Neck Edge, ch 3, turn. Work 1 dc in next dc, * ch 1, skip 1 dc, 1 dc in each of the next 2 dc, repeat from * across lower edge of Cap, then working across Front Edge of Cap, * ch 1, 2 dc in next sc, repeat from * across Front Edge, ch 1, join, ch 1, turn and complete edge of Cap with shells same as Jacket, cut yarn. Lace ribbon through Beading at Front and stitch in place at each side. Lace another length of ribbon through Beading at Neck Edge leaving ends at each side for tying.





Snug as a Hug



KNITTED INFANT'S SUIT

1-1½ years

Materials Required:

AMERICAN THREAD COMPANY

"DAWN" WOOL AND NYLON FINGERING YARN

19 ounces Pink or color of your choice for garment made double or

10 ounces Pink for garment made single and lined with 1¾ yds. suitable material

1 pr. each No. 3 and No. 10 knitting needles OR ANY SIZE NEEDLES WHICH WILL RESULT IN STITCH GAUGE BELOW.

Plastic Crochet Hook size F

½ yd. ½ inch elastic

4½ yds. 1 inch Satin Ribbon

1 - 14 inch zipper, 1 - 21 inch zipper

GAUGE: for No. 10 needles

10 sts = 1¼ inches 6 rows = 1 inch

LEFT SIDE: With No. 10 needles and starting at Leg, cast on 76 sts and work in ribbing of Knit (K) 1, Purl (P) 1 for ½ inch. Keeping ribbing pattern uniform increase 1 st each side every row until there are 110 sts on needle, then increase 1 st at beginning of row until 148 sts are on needle. Decrease 1 st at beginning of row until 118 sts remain, then work 2½ inches even. Change to No. 3 needles and work 1 inch in ribbing (waist). Change to No. 10 needles and work even for 2 inches. Work across 59 sts and place on stitch holder. (Division for Armhole). Continue across remaining 59 sts, then decrease 1 st at Armhole edge every row until 27 sts remain. Place sts on another stitch holder. Pick up 59 sts from 1st holder and complete section to correspond.

RIGHT SIDE: Work same as Left Side.

SLEEVES: With No. 10 needles cast on 61 sts and work in K 1, P 1 ribbing increasing 1 st each side every ½ inch until there are 83 sts on needle, then work even until Sleeve measures 8 inches. Decrease 1 st at each side every row until there are 15 sts on needle. Place sts on stitch holder.

CUFFS: With No. 3 needles pick up 1 st in each K st of Sleeve (30 sts) and work in K 1, P 1 ribbing for 4 inches, bind off. With No. 3 needles pick up 1 st in each K st of Leg (38 sts) and work in K 1, P 1 ribbing for 4 inches, bind off.

COLLAR: Slip sts from stitch holders onto No. 3 needles slipping sts of Sleeves between Front and Back Sections taking care to keep cuffs on right side, then work 3½ inches of K 1, P 1 ribbing, bind off.

CASING FOR ELASTIC: Attach yarn in K st of waist ribbing and with Crochet Hook, * chain (ch) 6, skip 2 K sts, slip (sl) st in K st 1 inch above, ch 6, skip 2 K sts, sl st in K st 1 inch below, repeat from * all around Waist, cut yarn. Lace elastic through casing and sew each end of elastic in position.

FINISHING: Sew Underarm Sleeve seam, then sew Raglan in position. Seam garment at Back, then seam each Leg Cuff and to within 2 inches above cuff.

LINING: Work Sleeves and 2 Sections in same manner, omitting Collar and Cuffs on these Sections, bind off. Seam Sections as above and place inside suit, stitching in place to Arm and Leg Cuffs and at Collar. Baste both Sections of Front opening together along each side. Fold satin ribbon in half, baste in place over Front edge, then machine stitch. Baste Section of Leg opening together along each edge and finish with satin ribbon same as Front opening. Finish each opening with a zipper. (If desired Knitted lining may be omitted and lining may be made of any suitable material, cut in shape of each section).

HAT

With No. 10 needles cast on 48 sts and work in ribbing of K 1, P 1 for 1¾ inches, bind off. Work another section in same manner.

NECK BAND: Place 2 sections together, working through both thicknesses and with No. 3 needles pick up 48 sts, then pick up 48 sts on other side. Work in ribbing of K 2, P 2 for ¾ inch, bind off.

FINISHING: Sew seam at back of Cap working through both thicknesses. Cut a length of ribbon longer than front edge of Cap. Fold ribbon in half lengthwise and stitch in place to front of Cap, then stitch ribbon to inside edge. Attach ribbon bows and ties as illustrated.



CROCHETED BABY SET

1 year

Materials Required:

AMERICAN THREAD COMPANY

{ "DAWN" SWEATER & SOCK YARN

} "SANFORLAN" WON'T SHRINK OUT OF FIT }

7 ounces White or color of your choice and

"STAR" RAYON CROCHET, Article 700

1 ball White

Plastic crochet hook size F

Steel crochet hook No. 4 OR ANY SIZE HOOK

WHICH WILL RESULT IN STITCH GAUGE

BELOW

7 pearl buttons

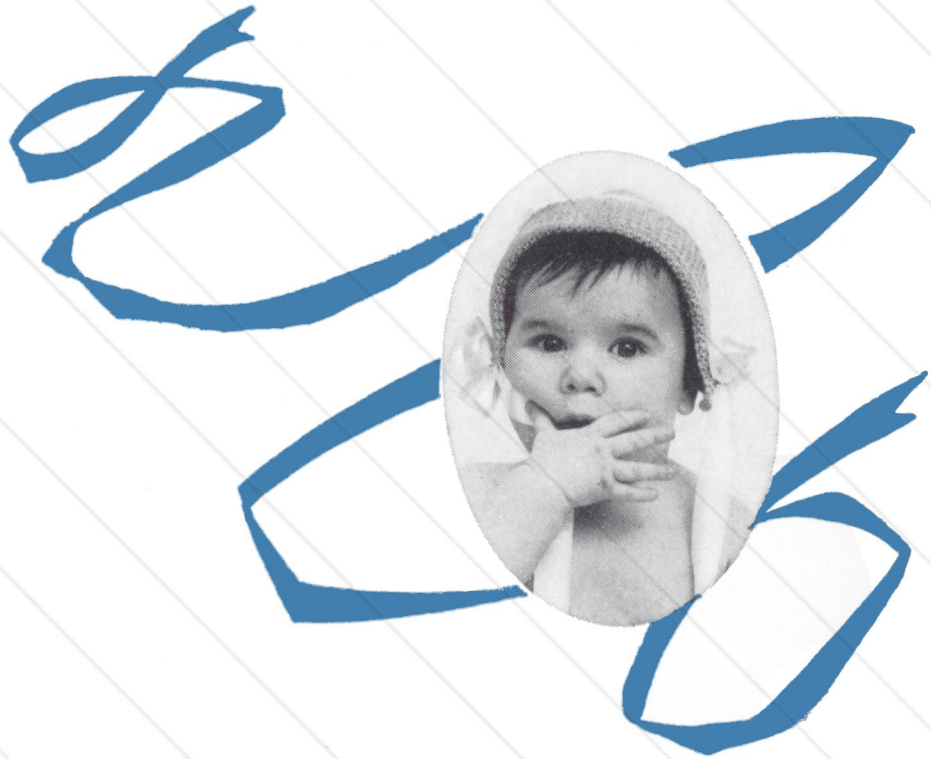
1½ yd. ¾ inch ribbon

GAUGE: for Size F hook

4 patterns = 1 inch 8 rows = 1 inch

SWEATER

With "DAWN" SWEATER AND SOCK YARN and Plastic crochet hook size F chain (ch) 180, 1 single crochet (sc) in 2nd stitch (st) from hook, * ch 1, skip 1 st of ch, 1 sc in next st of ch, repeat from * across row, ch 1, turn. 2nd ROW: 1 sc in 1st sc, * ch 1, 1 sc in next sc (pattern), repeat from * across row, ch 1, turn. Repeat 2nd row 50 times. 53rd ROW: Work across 22 patterns for RIGHT FRONT, ch 1, turn and work across 22 patterns for 3¼ inches, cut yarn. Join yarn in next sc of 52nd row, work across 46 patterns for BACK and complete same as RIGHT FRONT, cut yarn. Join yarn



Chic For The Shiek



in next sc of 52nd row for LEFT FRONT and complete same as RIGHT FRONT. Sew Shoulder seams (15 patterns for each shoulder and 16 patterns free for back of neck).

COLLAR: Join yarn in 1st sc of Right Front, * ch 1, 1 sc in next sc, repeat from * all around Neck Edge to Left Front, ch 1, turn. 2nd ROW: 1 sc in 1st sc, * ch 1, 1 sc in next sc, repeat from * across row, ch 1, turn. Repeat 2nd row 14 times, cut yarn. With right side of collar facing and with Steel crochet hook No. 4 join Rayon Crochet in 1st row of Collar on Left Front Neck Edge, * skip 1 row, 6 dc in next row, skip next row, sc in next row (shell), repeat from * to corresponding st on other side of Collar, cut thread.

SLEEVES: Ch 60 and work in pattern until Sleeve measures 6½ inches, cut yarn. Seam Sleeves, then sew Sleeves in position. Join yarn in seam at wrist and work 1 sc in every other row, join, ch 1. Work 2 more rows of sc, joining each row, cut yarn. Join Rayon Crochet in same sc, * skip next st, 6 dc in next st, skip next st, sc in next st, repeat from * all around, join, cut thread.

FRONT EDGING: With right side facing join Rayon Crochet in same space with Shell of Collar of Left Front, work 1 sc in each row down Front, ch 1, turn and work 2 more rows of sc, cut thread. With wrong side facing join Rayon Crochet in same space with last shell of Collar of Right Front, work 1 sc in each row down Front, ch 1, turn. 2nd ROW: 1 sc in each of the next 2 sc, * ch 3 for Buttonhole, skip 2 sc, 1 sc in each of the next 10 sc, repeat from * 5 times, ch 3, skip 2 sc, 1 sc in next sc, ch 1, turn. 3rd ROW: 1 sc in each sc working 2 sc in Buttonhole, ch 1, turn. 4th ROW: Skip 1 sc, 6 dc in next sc, * skip 2 sc, sc in next sc, skip 2 sc, 6 dc in next sc, repeat from * across row, skip 2 sc, sc in next sc, cut thread. Sew buttons in position. With right side of garment facing, join yarn in 1st st on lower edge, * ch 1, sc in next sc, repeat from * across lower edge, cut yarn.

CAP

Ch 3, work 12 dc in 1st st of ch, join in 1st dc. 2nd and 3rd ROWS: Ch 2 (counts as 1st short double crochet (sdc), work 2 sdc in each dc (sdc: yarn over hook, insert in st, pull loop through, yarn over and work off all loops at one time), join in 2nd st of ch. 4th and 5th ROWS. Work 1 sdc in each sdc joining each row, ch 1, turn. 6th ROW: 1 sc in same space, * ch 1, 1 sc in next sdc, repeat from * all around, ch 1, turn. 7th ROW: 1 sc in 1st sc, * ch 1, 1 sc in next sc, repeat from * across row, ch 1, turn. Repeat 7th row 47 times, cut yarn. With right side of work toward you join yarn in 39th row, 1 sc in same space and work 1 sc in each of the next 33 rows, 2 sc in each of the next 2 sts, 1 sc in each of the next 34 rows, ch 1, turn. NEXT ROW: Work 1 sc in each sc, ch 1, turn. NEXT 2 ROWS: Work 1 sc in each sc working the 4 center sts of each row as follows: insert hook in sc, pull

loop through, * insert hook in next sc, repeat from * twice, yarn over and pull through all sts at one time, cut yarn. Fold front of Cap back, then join Rayon Crochet in 1st free row at side and work shells same as Sweater.

MITTENS

Ch 44 and work in pattern for 3 inches, ch 1, turn. NEXT ROW: 1 sc in each sc, ch 1, turn. NEXT ROW: 1 sc in each of the next 2 sts, decrease in next 2 sts (to decrease: * insert hook in next st, pull loop through, repeat from * once, yarn over and work off all loops at one time), repeat from beginning across row ending with 1 sc in each of the last 2 sts, ch 1, turn. NEXT ROW: 1 sc in each st, ch 1, turn. NEXT ROW: 1 sc in each of the next 2 sts, decrease 1 st, repeat from beginning across row ending with sc in last st, ch 1, turn. NEXT ROW: Decrease across row, cut yarn. Draw sts together and seam at side. With Rayon Crochet work edge of shells same as Sleeves.

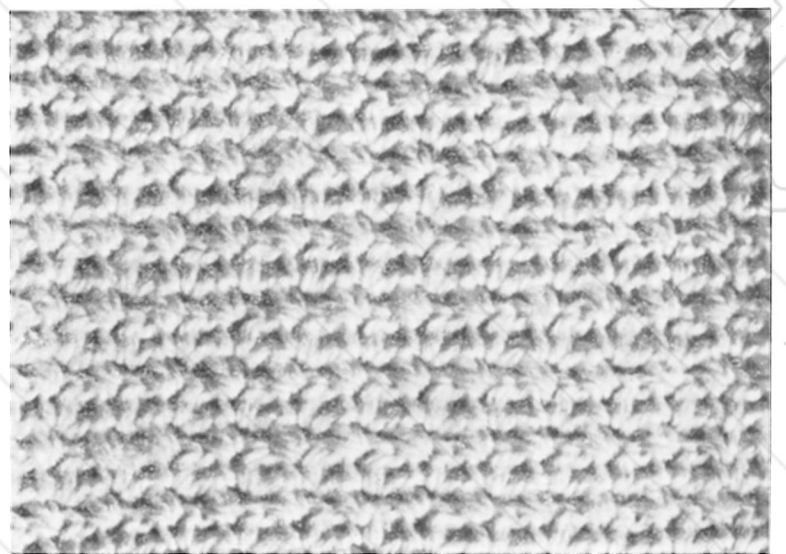
TIES: Work a ch 12 inches long, 1 sc in 2nd st from hook, 1 sc in each remaining st of ch, cut yarn. Lace tie through Mittens about ¾ inch from top.

BOOTIE

Ch 62 and work 31 patterns on ch, ch 1, turn. Work in pattern until Bootie measures 1½ inches. Work across 9 patterns, ch 7 for instep, skip 13 patterns, work 1 pattern in each of the next 9 patterns, ch 1, turn. Work in pattern across row working 3 patterns over Instep. Continue pattern for 1¼ more inches, cut yarn. Seam Bootie at back.

INSTEP: Attach yarn in 1st pattern of Instep and work * 5 pattern across Instep, ch 1, turn. Repeat from * until instep measures 1 inch. * Work 1 sc in each sc, ch 1, turn, repeat from * twice, cut yarn. With Rayon Crochet, crochet Instep in place with a row of sc, cut thread.

SOLE: Ch 6, 1 sc in 2nd st from hook, 1 sc in each of next 4 chs, ch 1, turn, work 2 rows of sc even, ch 1, turn, work in pattern for 2½ inches, then work 3 rows of sc even, cut yarn. With Rayon Crochet, crochet sole in place with a row of sc, join, cut thread. Sew seam, then attach Rayon Crochet in seam and complete with shells same as Mitten.





Sailor Dress

3 years

Materials Required:

AMERICAN THREAD COMPANY
The Famous "PURITAN" MERCERIZED
CROCHET COTTON, Article 40

1 ball White

10 balls National Blue for Blue dress

1 ball National Blue

7 balls White for White dress

Steel crochet hook No. 7 OR ANY SIZE HOOK
WHICH WILL RESULT IN STITCH GAUGE
BELOW

$\frac{3}{4}$ yd. narrow grosgrain ribbon

$\frac{1}{2}$ yd. Velcro

GAUGE: 8 double crochet = 1 inch 5 rows = 1 inch

BACK: With National Blue chain (ch) 101, double
crochet (dc) in 4th stitch (st) from hook, 1 dc in
each remaining st of ch, ch 1, turn (right side). 2nd
ROW: Single crochet (sc) in same space, * dc in
next st, sc in next st, repeat from * across row, turn.
3rd ROW: Ch 3 (counts as 1st dc), working in dc
increase 1 dc at the beginning and end of row, ch 1,
turn. 4th ROW: Same as 2nd row, ch 3, turn. 5th

ROW: Work even in dc, ch 1, turn. Repeat last 4
rows 3 times. 18th ROW: Slip stitch (sl st) across
1st 6 dc, * sc in next dc, dc in next dc, repeat from *
to within last 7 sts, sc in next dc, ch 3, turn.
19th ROW: Dc decrease (dec) in next 2 sts (dc dec:
keeping last loop of each st on hook work 1 dc in
each of the next 2 sts, thread over and work off all
loops at one time), 1 dc in each dc to within last
2 sts, dc dec in next 2 sts, ch 1, turn. 20th ROW:
Sc dec in next 2 sts (sc dec: insert hook in st, pull
loop through, insert hook in next st, pull loop
through, thread over and work off all loops at one
time), * sc in next dc, dc in next sc, repeat from *
to within 3rd st from end of row, sc in next st,
sc dec in next 2 sts, ch 3, turn. Repeat last 2 rows
twice. 25th ROW: Same as 19th Row. 26th ROW:
Sc in 1 st dc, * dc in next dc, sc in next dc, repeat
from * across row, ch 3, turn. 27th ROW: Work
even in dc, ch 1, turn. Repeat the last 2 rows 7 times.
42nd ROW: Sl st over 4 sts, * sc in next dc, dc in
next dc, repeat from * to within last 5 sts, sc in
next dc, sl st in next dc, ch 1, turn. 43rd ROW:
Skip the sl st, sl st in next 4 sts, sc in next st, 1 dc
in each of the next 63 sts, sc in next st, sl st in next

st, ch 1, turn. 44th ROW: Skip the sl st, sl st in next 4 sts, * sc in next dc, dc in next sc, repeat from * 27 times, sc in next dc, sl st in next st, ch 1, turn.

RIGHT SHOULDER: Skip the sl st, sl st in next 4 sts, sc in next st, 1 dc in each of the next 9 sts, dc dec in next 2 sts, sc in next st, sl st in next dc, ch 1, turn. 46th ROW: Skip the sl st, sl st in next st, * sc in next dc, dc in next dc, repeat from * twice, sc in next dc, sl st in next dc, ch 1, turn. 47th ROW: Skip the sl st, sl st in next st, sc in next st, 1 dc in each of the next 3 sts, dec in next 2 sts, cut thread.

LEFT SHOULDER: With wrong side of 44th row toward you attach Blue in 22nd free st from opposite side, sc in next st, dc dec in next 2 sts, 1 dc in each of the next 9 sts, sc in next st, sl st in next st, ch 1, turn. NEXT ROW: Skip the sl st, sl st in each of the next 4 sts, sc in next dc, * dc in next sc, sc in next dc, repeat from * twice, sl st in next st, ch 1, turn. NEXT ROW: Skip the sl st, sl st in each of the next 2 sts, ch 3, 1 dc in each of the next 3 sts, sc in next st, sl st in next st, cut thread.

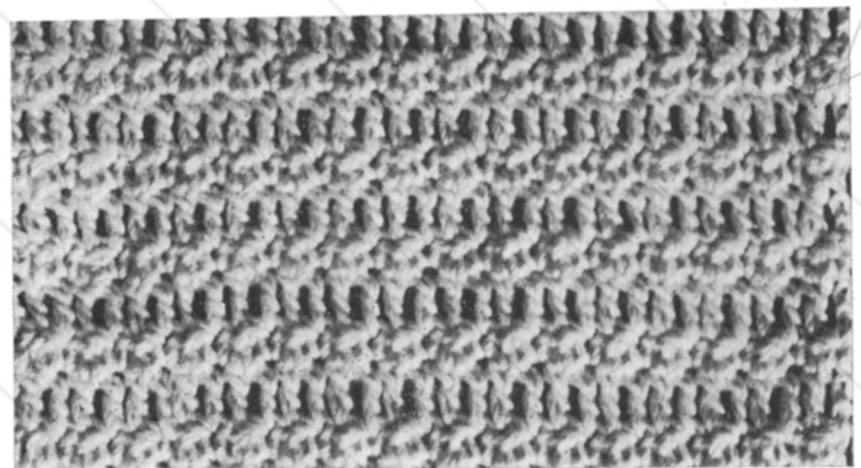
FRONT: Work 1st 5 rows same as Back. Repeat from 2nd to the 5th rows of Back twice. 14th ROW: Same as 2nd row of Back. 15th ROW: Ch 3, dc in same space, 1 dc in each of the next 51 sts, ch 1, turn (53 sts and half of upper part of Front). 16th ROW: Same as 2nd row of Back. 17th ROW: Working in dc, dec 1 st at end of row, ch 1, turn. 18th ROW: * Sc in next dc, dc in next dc, repeat from * across row to within last 8 sts, 1 sc in each of the next 2 sts, ch 3, turn (46 sts). 19th ROW: Working in dc, dec 1 st at beginning of row, ch 1, turn (45 sts). 20th ROW: Sc in next dc, * dc in next dc, sc in next dc, repeat from * across row ending with an sc dec in last 2 sts, ch 3, turn (44 sts). 21st ROW: Working in dc, dec 1 st at beginning and end of row, ch 1, turn (42 sts). 22nd ROW: * Sc in next dc, dc in next dc, repeat from * across row ending with an sc dec in last 2 sts (41 sts), ch 3, turn. 23rd ROW: Same as 19th Row (40 sts). 24th ROW: Same as 22nd Row (39 sts). 25th ROW: Same as 21st Row (37 sts). 26th ROW: Sc in 1st dc, * dc in next dc, sc in next dc, repeat from * across row, ch 3, turn. 27th ROW: Work even in dc, ch 1, turn. 28th ROW: Same as 26th row. 29th ROW: Working in dc, dec 1 st at end of row, ch 1, turn. 30th ROW: Sc dec in 1 st 2 dc, * dc in next dc, sc in next dc, repeat from * across row, ch 3, turn. 31st ROW: Work even in dc, ch 1, turn. 32nd ROW: Sc in 1st dc, * dc in next sc, sc in next dc, repeat from * across row, ch 3, turn. Repeat the last 4 rows twice (31 sts). 41st ROW: Same as 29th row. 42nd ROW: Sc dec in 1st 2 dc, * dc in next dc, sc in next dc, repeat from * across row to within last 4 sts, sl st in next st, ch 1, turn. 43rd ROW: Skip the sl st, sl st in next 4 sts, sc in next st, 1 dc in each remaining st, ch 1, turn. 44th ROW: * Sc in next dc, dc in next dc, repeat from * to within last 4 sts, sl st in next st, ch 1, turn. 45th ROW: Skip the sl st, sl st in

each of the next 4 sts, 1 dc in each of the next 11 sts, dec in next 2 sts, ch 1, turn. 46th ROW: Sc dec in 1st 2 dc, * dc in next dc, sc in next dc, repeat from * to within last 4 sts, sl st in next st, ch 1, turn. 47th ROW: Skip the sl st, sl st in next st, sc in next st, 1 sc in each of the next 3 dc, dec in next 2 sts, cut thread.

OTHER HALF OF FRONT: Skip center st of 14th row, attach Blue in next st, ch 3, 1 dc in each of the next 50 sts, 2 dc in next st, ch 1, turn. Work next 2 rows same as opposite side reversing the shaping. 18th ROW: Sl st over the 1st 6 sts, 1 sc in each of the next 2 sts, * dc in next st, sc in next st, repeat from * across row, ch 3, turn. Repeat from the 19th to the 41st row of opposite side reversing the shaping. 42nd ROW: Sl st in 1st 4 sts, sc in next dc, dc in next dc, repeat from * across row ending with an sc dec in last 2 sts, ch 3, turn. 43rd ROW: 1 dc in each of the next 19 sts, sc in next st, sl st in next st, ch 1, turn. 44th ROW: Skip the sl st, sl st in each of the next 4 sts, sc in next dc, * dc in next dc, sc in next dc, repeat from * across row, ch 3, turn. 45th ROW: Dec in next 2 sts, 1 dc in each of the next 10 sts, sl st in next st, ch 1, turn. 46th ROW: Skip the sl st, sl st in each of the next 4 sts, sc in next dc, * dc in next dc, sc in next dc, repeat from * across row ending with an sc dec in last 2 sts, ch 3, turn. 47th ROW: Dc dec in next 2 sts, 1 dc in each of the next 2 sts, sc in next st, sl st in next st, cut thread. Sew Shoulder and one Side seam. Sew other Side seam 1 inch from Armhole.

SLEEVES: Ch 97, dc in 4th st from hook, 1 dc in each st of ch, ch 1, turn. 2nd ROW: * Sc in 1 st dc, dc in next sc, repeat from * across row ending with sc in last st, ch 3, turn. 3rd ROW: Working in dc, dec 1 dc at beginning and end of row, ch 1, turn. Repeat the last 2 rows once. 6th ROW: Sl st in each of the next 8 sts, sc in next dc, * dc in next sc, sc in next dc, repeat from * to within last 8 sts, sl st in next st, ch 1, turn. 7th ROW: Skip the sl st, sl st in each of the next 3 sts, sc in next st, 1 dc in each st to within last 4 sts, sc in next st, sl st in next st, ch 1, turn. 8th ROW: Skip the sl st, sl st in each of the next 3 sts, sc in next dc, * dc in next dc, sc in next dc, repeat from * to within last 3 sts, sl st in next st, ch 1, turn. Repeat last 2 rows 4 times. 17th ROW: Same as 7th row, cut thread. 18th ROW: With

Continued on page 31





Lids for Kids

1 year

Materials Required:

AMERICAN THREAD COMPANY
"DAWN" KNITTING WORSTED

5 ounces White

1 ounce Amber for Pig Tail Cap

1/3 ounce Amber for Clown Face Cap or colors of your choice

1 button

1 1/2 yd. 1/4 inch ribbon

Aluminum crochet hook size H OR ANY SIZE HOOK WHICH WILL RESULT IN STITCH GAUGE BELOW.

5 inches x 3 inches Red Felt, 5 inches by 2 inches

Black Felt, 2 inches x 2 inches Blue Felt

GAUGE: 7 sc = 2 inches

4 rows = 1 inch

CLOWN CAP

Work 2 side sections same as 1st 8 rounds of Boy's Cap on page 23. NEXT ROW: 1 sc in each of the next 32 sc, ch 1, turn. NEXT ROW: 1 sc in each sc. Repeat last row 6 times, cut yarn. With right side of work toward you attach yarn and crochet the 2 sections together with a row of sc; then work a row

of sc all around Cap working 1 sc in each sc and 1 sc in each row at center section, join. NEXT ROW: Ch 2, dc in same space, * skip 1 sc, sc in next sc, ch 2, dc in same space (shell), repeat from * all around, join, cut yarn.

CHIN STRAP: Ch 3, sc in 2nd st from hook, sc in next st of ch, ch 1, turn. 2nd ROW: 1 sc in each sc, ch 1, turn. Repeat 2nd row 19 times or length desired. NEXT ROW: Sc in next sc, ch 1, sc in next sc, (Buttonhole), ch 1, turn. NEXT ROW: 1 sc in each sc, cut yarn. Sew one side of Chin Strap in position and sew Button to Cap.

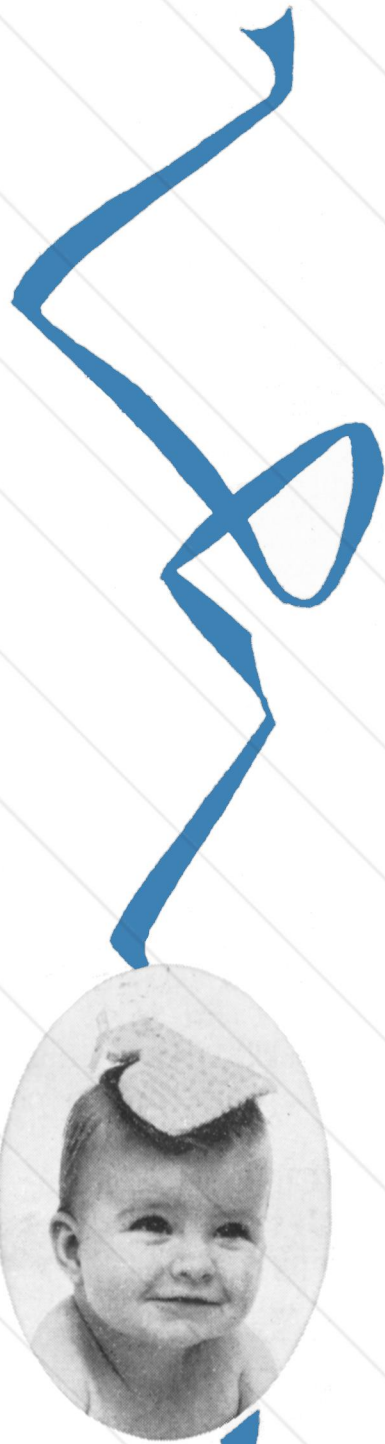
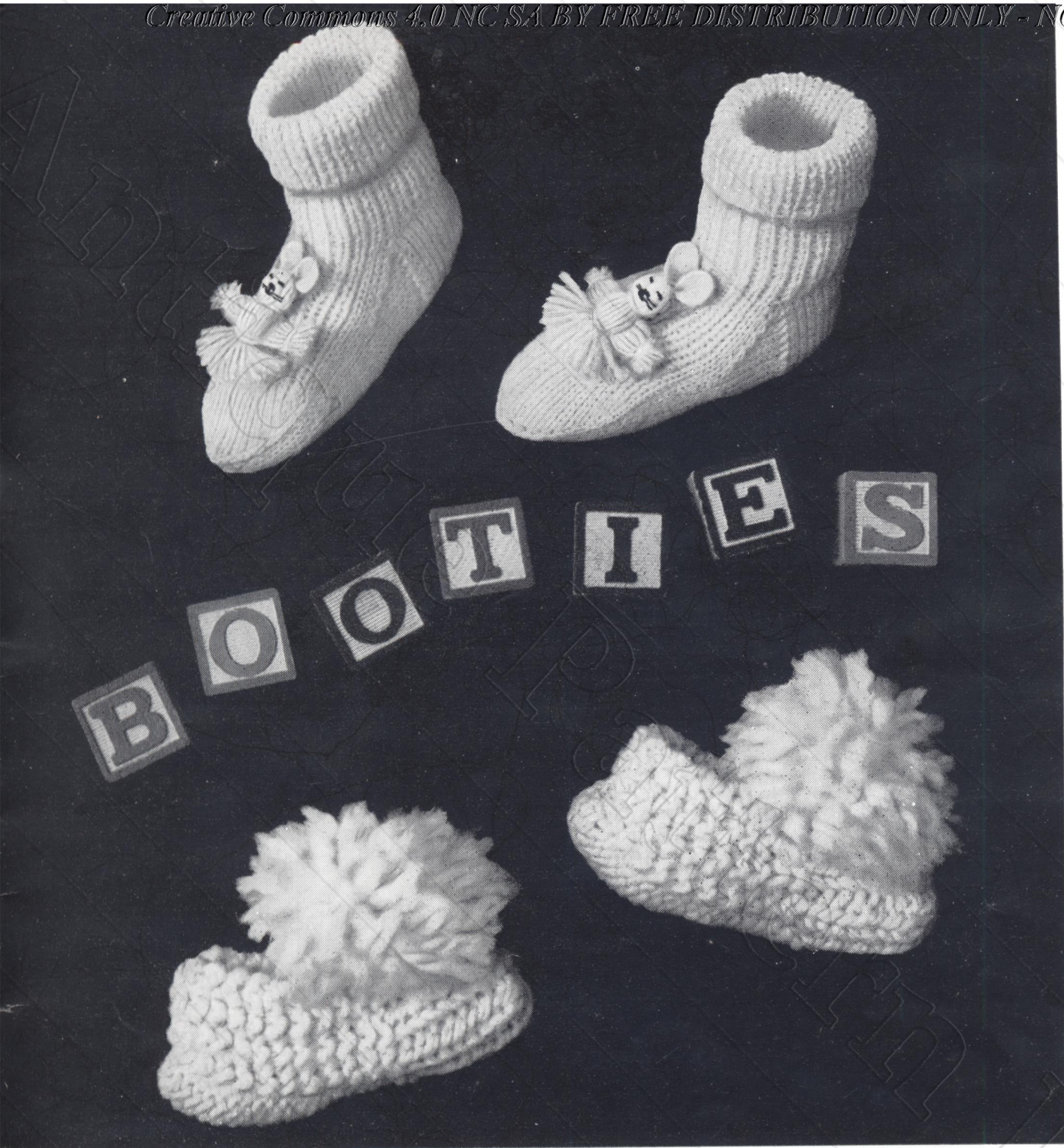
FACE: Cut sections of felt as illustrated using Red for Mouth and Nose and Black for Eyes and Eye-grows.

POMPON: Wind Amber 20 times around a 1 inch cardboard. Tie one end, cut other end and trim into shape. Tie 2 pompons over each Eye as illustrated. Complete other side to correspond.

BOOTIES

Ch 26 (to measure about 6 inches), join being careful not to twist ch, 1 sc in same space, 1 sc in each st of ch. Do not join this or following rounds. Place a marker at beginning of each round. Work even in sc until section measures 2 inches. BEADING: Sc in next sc, ch 1, skip next sc, sc in next sc, repeat from * all around ending with ch 1,

Continued on page 18



Booties for Cuties

POMPON BABY SLIPPERS 1-2 years

Materials Required:

AMERICAN THREAD COMPANY

"DAWN" BULKY YARN

2 ounces White or color of your choice

1 pr. knitting needles No. 10½ OR ANY SIZE
NEEDLES WHICH WILL RESULT IN
STITCH GAUGE BELOW

GAUGE: 4 sts = 1¼ inches 5 rows = 1 inch.

Cast on 19 stitches (sts), Knit (K) 2, * slip (sl) 1, K 1, repeat from * once, sl 1, Purl (P) 5, * sl 1, K 1, repeat from * once, sl 1, K 2. NEXT ROW: K across row. Repeat last 2 rows until center measures 3½ inches from beginning. NEXT ROW: (Start toe section) Work in ribbing of K 1, P 1. NEXT ROW: Decrease 1 st at beginning of row and continue in ribbing across row. Repeat last row until 12 sts remain, cut yarn leaving about a 12 inch length. Thread into needle and draw through all sts on needle. Sew Toe section and 1 inch of Instep.

Sew Back seam and draw Heel section together easing fullness. Lace elastic through top if desired.

POMPON: Wind yarn 60 times over a 1½ inch cardboard, tie one end, cut other end and tie in place.

BUNNY SOCKS 1-1½ years

Materials Required:

AMERICAN THREAD COMPANY

{ "DAWN" SWEATER & SOCK YARN }

{ "SANFORLAN" WON'T SHRINK OUT OF FIT }
or "DAWN" NYLON

1 ounce White or color of your choice

1 pr. knitting needles No. 3

2 double pointed needles No. 3 OR ANY SIZE
NEEDLES WHICH WILL RESULT IN
STITCH GAUGE BELOW

Pink Felt

GAUGE: 8 stockinette sts = 1 inch

Continued on page 18

Continued from page 16

skip 1 sc, sl st in next sc. **NEXT ROUND:** Ch 1, sc in same space, * sc in ch 1 loop, sc in next sc, repeat from * all around (26 sts), join, cut yarn. **NEXT ROW:** Fold section in half, attach yarn in 10th st from center back for Instep, 1 sc in same space, 1 sc in each of the next 7 sc, ch 1, turn. **NEXT ROW:** 1 sc in each sc (8 sc), ch 1, turn. Repeat last row until Instep measures 2 inches ending on right side. **NEXT ROW:** Work 6 sc on side of Instep, 1 sc in each of the next 9 sc (center back). Work other side to correspond, do not turn. **NEXT ROUND:** 1 sc in each sc decreasing 3 sts evenly spaced around Toe. **NEXT 2 ROUNDS:** 1 sc in each sc. **NEXT ROUND:** Working in back loop of sts only work 1 sc in each sc. **NEXT ROUND:** 1 sc in each sc decreasing 3 sts evenly spaced at Toe and Heel. **NEXT ROUND:** 1 sc in each sc, join, cut yarn and seam center of sole. With right side of work toward you fold Bootie at ridge to form outside edge of Sole. Attach yarn in center stitch at back of heel and picking up entire st, work a row of sc all around ridge, join, cut yarn. Attach yarn in center st at back of Bootie and work 26 sc around top, join. **NEXT ROUND:** Work a row of shells same as Cap, join, cut yarn. Lace ribbon through Beading and work Face as illustrated. Work a pompon same as Cap and sew in position.

MITTENS

Ch 21, join being careful not to twist ch, ch 1, 1 sc in each st of ch, do not join this or following rounds. Place a marker at beginning of each round. **NEXT ROUND:** 1 sc in each sc. Repeat the last round until Mitten measures 3 inches from beginning. **NEXT 3 ROUNDS:** Decrease 4 sts evenly spaced in each round but not directly over decreases of previous round, cut yarn leaving an end, thread into needle and draw through remaining sts. **BEADING:** Attach yarn at opposite side of starting ch, ch 1, 1 sc in next st of ch, * ch 1, skip 1 st of ch sc in next st, repeat from * all around, join in 1st sc. **NEXT ROUND:** Ch 1, sc in same space, * 1 sc in next ch 1 space, 1 sc in next sc, repeat from * all around ending to correspond, join. **NEXT ROUND:** Work a row of shells same as Cap, join, cut yarn. Lace ribbon through Beading and work Face as illustrated. Trim with pompon same as Bootie.

PIG TAIL CAP, MITTENS & BOOTIES

1 year

Work same as Clown Cap, Mittens and Booties, but embroider face for cap as illustrated using Blue felt for eyes, Red felt for mouth and nose and outline eyes and eyebrows with Black "STAR" Six Strand Mercerized Embroidery Cotton.

BRAID: Cut 50 strands 16 inches long, tie in center. Divide in thirds and braid each side tightly. Tie each end with ribbon bows and trim evenly. Sew braid in position as illustrated. Cut 40 1 inch strands for bangs and sew in place. Complete other side of cap to correspond. **BOOTIES AND MITTENS:** Embroider face as illustrated and finish with Pom-pom.

Continued from page 17

Cast on 45 stitches (sts) and work in ribbing of Knit (K) 1, Purl (P) 1 for $3\frac{1}{2}$ inches or length desired, then K 12, place 33 remaining sts on stitch holder. **FIRST HALF OF HEEL:** Starting with a P row work 12 sts in stockinette st (K 1 row, P 1 row) for 17 more rows, then shape as follows: K 1, slip (sl) 1, K 1, pass sl st over K st (p.s.s.o.), K 1, turn, sl 1, P 2, turn, K 2, sl 1, K 1, p.s.s.o., K 1, turn, sl 1, P 3, turn. Continue in same manner until 7 sts remain, pick up and K 10 sts on side of heel, sl the 33 sts from holder onto free needle and work 21 sts in ribbing for instep. Place 38 sts from right hand needle on stitch holder. **SECOND HALF OF HEEL:** Starting with a K row work 12 remaining sts in stockinette st for 17 rows, then shape as follows: P 1, P 2 together (tog), P 1, turn, sl 1, K 2, turn, P 2, P 2 tog P 1, turn, sl 1, K 3, turn. Continue in same manner until 7 sts remain. Pick up and P 10 sts on side of heel, sl sts from holder onto free needle, work 21 instep sts in ribbing and P next 17 sts. **SHAPE GUSSET:** K 14, K 2 tog, K 1, work 21 instep sts in ribbing, K 1, sl 1, K 1, p.s.s.o., K 14, turn, P 16, work 21 sts in ribbing, P 16, turn, K 13, K 2 tog, K 1, work 21 sts in ribbing, K 1, sl 1, K 1, p.s.s.o., K 13, turn, P 15, work 21 sts in ribbing, P 15 turn. Continue decreases in same manner until there are 45 sts on needle.

FOOT: Work even working 21 instep sts in ribbing and remaining sts in stockinette st until foot measures $1\frac{1}{2}$ inches less than length desired ending on wrong side. **SHAPE TOE:** K 8, K 2 tog, K 2, sl 1, K 1, p.s.s.o., K 17, K 2 tog, K 2, sl 1, K 1, p.s.s.o., K 8. **NEXT ROW:** P across row. **NEXT ROW:** K 7, K 2 tog, K 2, sl 1, K 1, p.s.s.o., K 15, K 2 tog, K 2, sl 1, K 1, p.s.s.o., K 7. **NEXT ROW:** P across row. Continue in this manner until 13 sts remain, then P 1 row decreasing 1 st in center of row, cut yarn leaving a 20 inch length for weaving. Slip sts on 2 double pointed needles, 6 sts on each needle. Thread yarn into blunt needle and weave toe together as follows: * pass needle through 1st st of front needle as if knitting and slip st off needle, pass into 2nd st as if purling and leave st on needle, pass through 1st st of back needle as if purling and slip st off needle, pass through 2nd st as if knitting and leave st on needle, repeat from * until all sts are worked off. Sew Sole and Back of Sock together.

BUNNY

ARMS: Wind yarn 12 times over a 2 inch cardboard, slip off cardboard and tie about $\frac{1}{2}$ inch from each end, trim each end.

BODY: Wind yarn 50 times over a 2 inch cardboard. Tie through center at one end (top of head), cut opposite end. Tie tightly about $\frac{1}{2}$ inch from top of head for neck. Insert arms and tie about $\frac{1}{2}$ inch from last tying.

EARS: Cut a piece of felt $\frac{1}{2}$ inch by $\frac{3}{4}$ inch, round edges at top and graduate sides to measure $\frac{1}{4}$ inch width. Cut 3 more Ears in same manner. Sew in position. Embroider Face as illustrated.



Tat for Pat

INFANT'S CHRISTENING CAP & DRESS EDGING

Materials Required:

AMERICAN THREAD COMPANY

"STAR" TATTING CROCHET, Article 125

3 balls White for Dress, 2 balls White for Cap and

"STAR" SIX STRAND MERCERIZED EMBROIDERY COTTON

1 skein White

1 Infant Dress and Cap

Shuttle

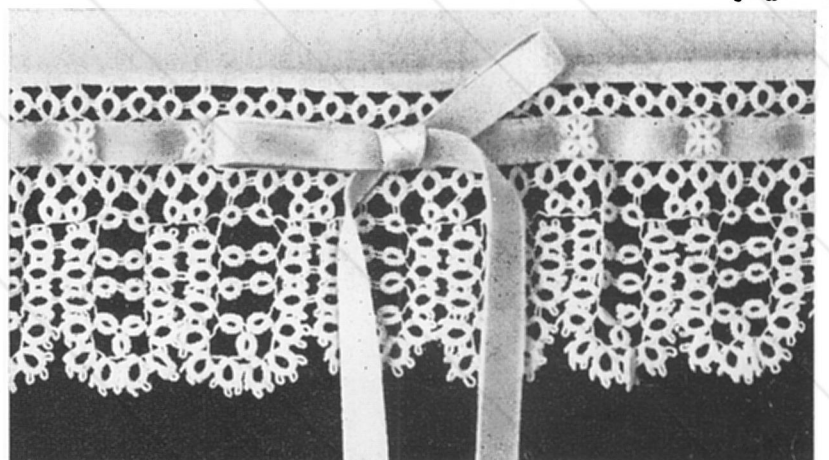
4 yds. Narrow Satin Ribbon

DRESS EDGING

EDGE: R, 3 ds, 2 p sep by 3 ds, 6 ds, cl r, turn, 1/8 inch space. R, 3 ds, 5 p sep by 3 ds, 3 ds, cl r, * turn, 1/8 inch space. R, 6 ds, p, 6 ds, cl r, turn, 1/8 inch space. R, 3 ds, join to last p of large r, 3 ds, 4 p sep by 3 ds, 3 ds, cl r. Repeat from * twice. * R, 3 ds, join to p of last large r, 3 ds, 4 p sep by 3 ds, 3 ds, cl r. Repeat from * once, turn, 1/8 inch space. R, 6 ds, join to p of last small r, 6 ds, cl r, turn, 1/8 inch space. * R, 3 ds, join to last p of last large r, 3 ds, 4 p sep by 3 ds, 3

ds, cl r. Repeat from * twice, turn, 1/8 inch space. R, 6 ds, join to same p of small r, 6 ds, cl r, * turn, 1/8 inch space. R, 3 ds, join to last p of last large r, 3 ds, 4 p sep by 3 ds, 3 ds, cl r, turn, 1/8 inch space. R, 6 ds, join to corresponding p of opposite r, 6 ds, cl r. Repeat from * once, turn, 1/8 inch space. R, 3 ds, join to last p of large r, 3 ds, 4 p sep by 3 ds, 3 ds, cl r, turn, 1/8 inch space. R, 6 ds, join to corresponding p of small r, 3 ds, p, 3 ds, cl r, 1/4 inch space. R, 6 ds, 2 p sep by 3 ds, 3 ds, cl r, 1/8 inch space. R, 3 ds, join to last p of last small r, 3 ds, p, 6 ds, cl r, 1/4 inch space. R, 3 ds, 2 p sep

Continued on page 27



Beauty for Baby

KNITTED SEED STITCH SET

6 months

Materials Required:

AMERICAN THREAD COMPANY

"DAWN" WOOL AND NYLON FINGERING
YARN or

{ "DAWN" SWEATER & SOCK YARN }
{ "SANFORLAN" WON'T SHRINK OUT OF FIT }

5 ounces Pink or

"DAWN" MEDIUM WEIGHT POMPADOUR

6 ounces Pink or color of your choice

3 yards $\frac{3}{8}$ inch and 1 yard $\frac{5}{8}$ inch ribbon

1 pr. knitting needles No. 3 OR ANY SIZE
NEEDLES WHICH WILL RESULT IN STITCH
GAUGE BELOW.

GAUGE: 8 stitches = 1 inch 12 rows = 1 inch

PATTERN STRIPE: Consists of 10 rows. 8 rows seed
stitch (Knit 1, Purl 1. In next row K the P st and
P the K st) and 2 rows of stockinette stitch (K 1
row, P 1 row).





SACQUE

Starting at FRONT cast on 60 sts and work 4 rows in stockinette st. 5th ROW: K 1, * yarn over (yo), K 2 together (tog), repeat from * across row, K 1. 6th ROW: P across row (these 6 rows form border). Work 5 patterns stripes, then work 2 rows seed st. Work 42 sts in seed st, place these sts on stitch holder, complete row, then work back across 18 sts keeping pattern uniform. SLEEVES: Cast on 27 sts and complete pattern stripe. Work 8 more pattern stripes. Work 2 rows seed st, then bind off 27 sts for Sleeve, work across remaining 18 sts of row. NEXT ROW: Work across 18 sts, slip sts from holder and complete this pattern stripe. Work 10 pattern stripes for BACK then complete other SLEEVE and FRONT to correspond.

YOKE: Cast on 16 sts and work 1st 6 rows same as Sacque, then work in garter st (K each row) until there are 266 rows. Complete Border to correspond with other side, bind off. Sew Yoke to garment easing fullness.

NECK EDGE: With right side of work toward you pick up 68 sts around Neck, P across row and complete Border same as Sacque, then K 1 row, P 1 row. Repeat 5th and 6th rows of Border same as Sacque once, bind off.

CUFFS: Cast on 9 sts and work 64 rows in garter st, bind off. Sew Cuff to Sleeve easing fullness. Pick up 32 sts across Cuff edge and complete Border same as Neck omitting last 4 rows. Sew Sleeve seams. Turn

edges on both Fronts, Sleeves and Neck Edge under to form scallop, sew in position. Lace ribbon through Beading at Neck.

CAP

Cast on 46 sts, K 1 row, P 1 row. 3rd ROW: K 1, * yo, K 2 tog, repeat from * across row, K 1. 4th ROW: P across row. Repeat from beginning once. Work 14 pattern stripes, then work 8 rows in seed st (about 13 inches). Complete border of Cap to correspond with other side, bind off. Turn 1st and last 3 rows under and sew in position. Fold Cap in half along pattern stripe, sew back seam. With right side of work toward you pick up 84 sts across opposite side and P 1 row. BEADING: K 1, * yo, K 2 tog, repeat from * across row, K 1. NEXT 3 ROWS: P 1 row, K 1 row, P 1 row, bind off. Turn 3 rows under for Front Border and 2 rows under on lower edge, sew in position. Lace ribbon through Beading.

MITTENS

Cast on 42 sts and work 1st 6 rows same as Sacque, then work 8 rows in seed st. BEADING: K 1, * yo, K 2 tog, repeat from * across row, K 1. NEXT ROW: P across row. Work 3 pattern stripes. NEXT ROW: K 1, P 2 tog, * K 1, P 1, repeat from * 7 times, K 2 tog, P 2 tog, * K 1, P 1, repeat from * 7 times, K 2 tog, P 1. NEXT 3 ROWS: Work even in seed st. NEXT ROW: K 1, P 2 tog, * P 1, K 1, repeat from * 6 times, P 2 tog, K 2 tog, * P 1, K 1, repeat from * 6 times, P 2 tog, K 1. NEXT ROW: Work even in seed st. NEXT ROW: K 1, P 2 tog, * K 1, P 1, repeat from * 5 times, K 2 tog, P 2 tog, * K 1, P 1, repeat from * 5 times, K 2 tog, P 1. NEXT ROW: Work even in seed st. NEXT ROW: K 2 tog across row. NEXT ROW: P across row, cut yarn leaving an end. Thread yarn into needle and draw sts together. Sew side seam. Turn 1st 5 rows under and sew in position. Lace ribbon through beading.

BOOTIES

Cast on 44 sts and work Border and 2 patterns stripes same as Sacque. BEADING: K 1, * yo, K 2 tog, repeat from * across row, K 1. NEXT ROW: P across row. NEXT 2 ROWS: Work in stockinette st. NEXT ROW: Work in seed st across 15 sts and place these 15 sts on a stitch holder, work across next 14 sts for instep, place remaining 15 sts on another stitch holder. Work across 14 sts of Instep for 1 $\frac{3}{4}$ inches ending on wrong side, cut yarn. Slip 15 sts from 1st holder onto needle, work remainder of Bootie in seed st. Attach yarn, pick up and work 12 sts on side of Instep, 14 sts from needle, pick up 12 sts from opposite side of Instep and 15 sts from 2nd holder. Work even in seed st for 1 $\frac{1}{4}$ inches. NEXT ROW: Decrease 1 st at beginning and end of row and 2 sts at center. Work 1 row even. Repeat last 2 rows twice, bind off. Sew Back and Sole seams. Turn Border under and sew in position. Lace ribbon through Beading.



His and Hers

STAR STITCH BABY SET

1 year

Materials Required:

AMERICAN THREAD COMPANY
"DAWN" KNITTING WORSTED

12 ounces White or color of your choice

Aluminum crochet hook size H OR ANY SIZE
HOOK WHICH WILL RESULT IN STITCH
GAUGE BELOW

1½ yds. 1 inch Pink Ribbon

4-½ inch buttons

2-¼ inch buttons

GAUGE: 2 star stitches = 1 inch 2 rows = 1 inch

SWEATER

BACK: Chain (ch) 50 (to measure about 14 inches), insert hook and draw up a loop in 2nd stitch (st) from hook and in each of the next 2 sts of ch (4 loops on hook), yarn over and pull through all loops at one time, * ch 1 (the ch 1 is termed the

eye of the star st), insert hook in eye of star st, pull loop through, pull loop through each of the next 2 sts of starting ch, yarn over and pull through all 4 loops on hook, repeat from * across row, ch 3, turn. 2nd ROW: Draw loop through 2nd st from hook, eye of star st just made, eye of next star st, yarn over and pull through all loops at one time, * ch 1, draw up a loop in eye of star st just made, in eye of star st already worked in, and in eye of next star st, yarn over and pull through all 4 loops on hook at one time, repeat from * across row completing last star st by drawing a loop through 3rd st of end ch, ch 3, turn. Repeat last row until work measures 7½ inches having an even number of rows. **SHAPE ARMHOLE:** Slip st (sl st) across 2 patterns, work in pattern to within last 2 patterns (20 star sts), ch 3, turn and work even in pattern until armholes measure 3½ inches. **NEXT ROW:** Sl st across 2 patterns, work in pattern to within 2 patterns, turn. Repeat last row twice, cut yarn.

RIGHT FRONT: Ch 32, work in pattern until Front measures same as Back to Armholes. **NEXT ROW:** Work across row to within last 2 star sts, ch 4, turn. Work even in pattern until Armhole measures same as Back ending at Front Edge, cut yarn, turn. **SHAPE SHOULDERS and NECK EDGE:** Skip 7 star sts, attach yarn in next star st and work 4 patterns, turn. **NEXT ROW:** Sl st across 2 patterns, work across remaining 2 patterns, cut yarn.

LEFT FRONT: Ch 18 and work in pattern same as Right Front reversing shaping and omitting Neck Edge shaping. Sew Shoulder and Underarm seams.

SLEEVES: With right side of work toward you attach yarn at Underarm and work 18 patterns around Armhole, join, ch 3, turn. Work in pattern joining each row until Sleeve measures 7 inches. **NEXT ROW:** Work 1 sc in each eye of star stitch. **NEXT ROW:** Work 1 sc in each sc, then repeat last row twice, cut yarn.

FINISHING: With right side of work toward you attach yarn at lower edge of Right Front and work 32 sc across Front, ch 1, turn. **NEXT ROW:** Sc in next sc, ch 2, skip 2 sc, 1 sc in each of the next 7 sc, * ch 2, skip 2 sc, 1 sc in each of the next 7 sc, repeat from * once, ch 2, skip 2 sc, 1 sc in each of the next 2 sc, ch 1, turn (4 Buttonholes). **NEXT ROW:** Work 1 sc in each sc working 2 sc in each ch 2 loop of Buttonhole, cut yarn. With right side of work toward you attach yarn at Shoulder Edge of Left Front and work 37 sc down Front, ch 1, turn. **NEXT ROW:** 1 sc in each of the next 32 sc, ch 1, turn. **NEXT ROW:** 1 sc in each sc, cut yarn. With right side of work toward you attach yarn at Neck Edge of Right Front and work 38 sc around Neck Edge leaving the 3 sc rows of Border free on Left Front, ch 1, turn. **NEXT ROW:** 1 sc in each sc, ch 1, turn. Repeat last row 3 times, cut yarn. With right side of work toward you attach yarn at lower edge of Right Front and work 1 row of sc all around Sweater working 2 sc in each corner of Collar and



each Front Edge. Sew Buttons in position sewing a small Button under Collar at side edge.

BOY'S CAP

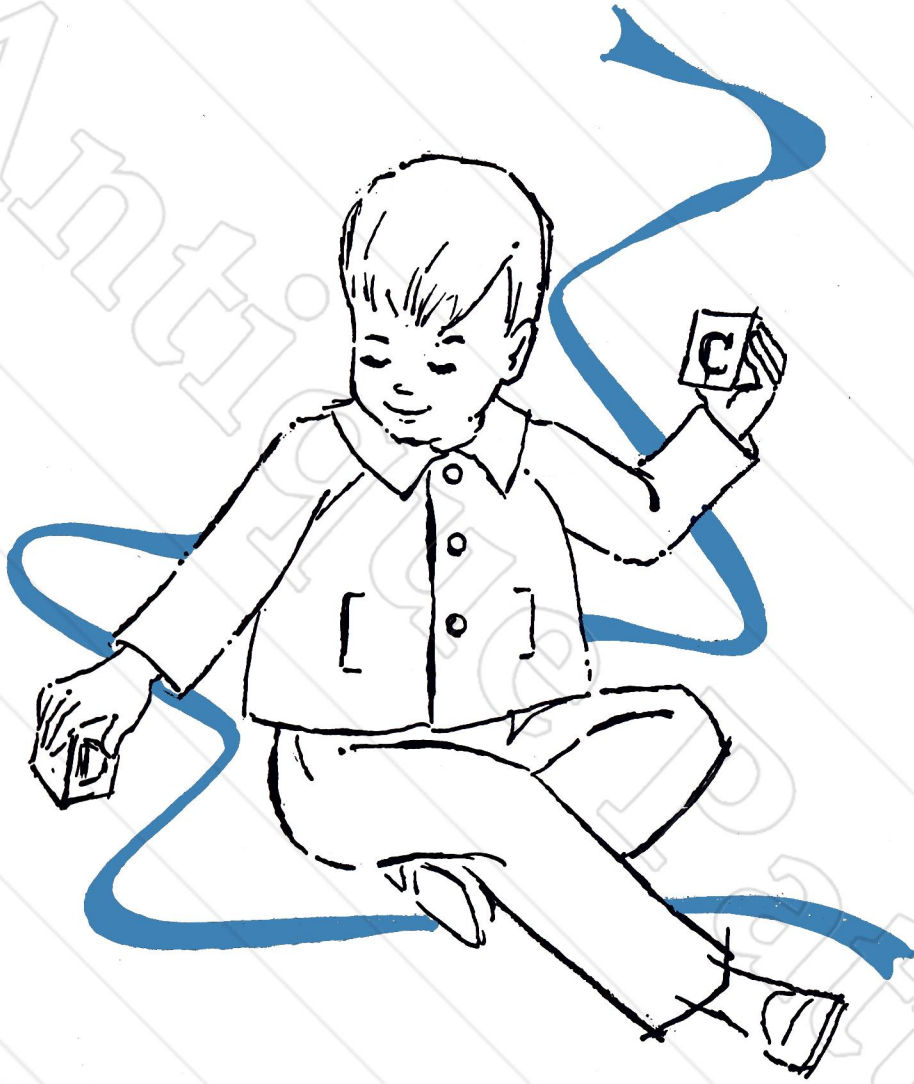
Ch 2, 6 sc in 2nd st from hook, do not join this or following rounds. Place a marker at beginning of each round. 2nd ROUND: 2 sc in each sc (12 sc). 3rd ROUND: * 2 sc in next sc, 1 sc in next sc, repeat from * all around. 4th ROUND: * 2 sc in next sc, 1 sc in each of the next 2 sc, repeat from * all around. Continue increasing in same manner, having 1 more st between increases in each round until there are 6 sts between increases (48 sc), ch 1, turn. **NEXT ROW:** 1 sc in each of the next 38 sc, ch 2, turn. **NEXT 4 ROWS:** Work in pattern same as Sweater, cut yarn. Work another section in same manner, do not cut yarn. With right side of work toward you crochet the two sections together with sc, cut yarn. Attach yarn at beginning of star st section at lower edge and work a row of sc around Cap working 11 sc across center section for back of neck, 1 sc in each sc on side of Cap and 17 sc in star st section on front of Cap, join. **NEXT ROW:** Ch 2, dc in same space, * skip 1 sc, sc in next sc, ch 2, dc in same space, repeat from * all around, join, cut yarn.

CHIN STRAP: Ch 3, sc in 2nd st from hook, sc in next st of ch, ch 1, turn. 2nd ROW: 1 sc in each sc, ch 1, turn. Repeat 2nd row 19 times or length desired. **NEXT ROW:** 1 sc in next sc, ch 1, sc in next sc, ch 1, turn. **NEXT ROW:** 1 sc in each sc, cut yarn. Sew one side of Strap in position. Sew Button on Cap.

GIRL'S BONNET

Work same as Boy's Cap until there are 8 sts between increases (60 sts). **NEXT ROW:** 1 sc in each of the next 52 sts, ch 2, turn. Work even in pattern same as Sweater for 4 inches, ch 1, turn. **NEXT ROW:** Working loosely work 2 sc in each st, ch 1, turn. **NEXT ROW:** 1 sc in each sc, cut yarn. With right side of work toward you work 35 sc across lower edge of Cap, ch 1, turn. **NEXT ROW:** 1 sc in each sc decreasing 4 sts evenly spaced (to decrease: * insert hook in next st, pull loop through, repeat from * once, yarn over and work off all loops at one time), ch 1, turn. Repeat last row once, cut yarn. Trim with ribbon as illustrated.

Three Cheers



JACKET 2 years

Materials Required:
AMERICAN THREAD COMPANY
"DAWN" BULKY YARN or
"DAWN" WOOL and NYLON BULKY YARN
10 ounces Crimson or color of your choice
Wooden crochet hook No. 10 OR ANY SIZE HOOK
WHICH WILL RESULT IN STITCH GAUGE
BELOW.

3 buttons

GAUGE: 2 patterns=1½ inches 3 rows=1½ inches

BACK: Starting at Neck edge chain (ch) 12, single
crochet (sc) in 2nd stitch (st) from hook, * double
crochet (dc) in next st of ch, sc in next st, repeat



INSTRUCTIONS FOR TWO
BOTTOM SWEATERS ON
PAGE 26

from * across row, dc in same st where last sc was worked, ch 1 to turn all rows. 2nd ROW: 1 sc, 1 dc in 1st dc (increase), * sc in next sc, dc in next dc (pattern), repeat from * 4 times, 1 sc, 1 dc in next sc (increase). 3rd ROW: 1 sc, 1 dc in 1st dc, work 6 patterns, 1 sc, 1 dc in last sc. 4th ROW: 1 sc, 1 dc in 1st dc, work 7 patterns, 1 sc, 1 dc in next sc. NEXT 8 ROWS: Work in same manner as last row having 1 more pattern in each row. 13th ROW: 1 sc, 1 dc in 1st dc, work 16 patterns, 1 sc in next sc. NEXT 10 ROWS: Work 17 patterns, 1 sc in next sc. Cut yarn at end of last row.

LEFT FRONT: Ch 4, sc in 2nd st from hook, dc in next st of ch, 1 sc, 1 dc in next st, ch 1, turn. 2nd ROW: 1 sc, 1 dc in next dc, sc in next sc, dc in next dc, 1 sc, 1 dc in next sc, ch 6, turn. 3rd ROW: Sc in 2nd st from hook, * dc in next st, sc in next st, repeat from * once, dc in next st, work 2 patterns, 1 sc, 1 dc in next sc, ch 1, turn. 4th ROW: 1 sc, 1 dc in 1st dc, work 5 patterns, sc in next sc, ch 1 to turn the following rows. 5th ROW: Work 6 patterns, 1 sc, 1 dc in next sc. 6th ROW: 1 sc, 1 dc in 1st dc, work 6 patterns, sc in next sc. 7th ROW: Work 7 patterns, 1 sc, 1 dc in next sc. 8th ROW: 1 sc, 1 dc in 1st dc, work 7 patterns, sc in next sc. 9th ROW: Work 8 patterns, 1 sc, 1 dc in next sc. 10th ROW: 1 sc, 1 dc in 1st dc, work 8 patterns, sc in next sc. 11th ROW: Work 9 patterns, 1 sc, 1 dc in next sc. 12th ROW: 1 sc, 1 dc in 1st dc, work 4 patterns, sc in next sc, turn. 13th ROW: Work 5 patterns, sc in next sc, turn. Repeat last row 4 times, drop yarn. With wrong side of 11th row toward you attach yarn in 1st free dc, work 4 patterns, sc in last sc. NEXT 5 ROWS: Work 4 patterns, sc in next sc, ch 2 at end of last row to tighten st, cut yarn. Pick up dropped yarn, work 5 patterns, sc in next sc, dc in ch at end of last section worked, then work 4 patterns, sc in last sc (this completes pocket slit). Fasten the loose end of yarn at pocket slit. NEXT 5 ROWS: Work 10 patterns, sc in last sc, cut yarn at end of last row.

POCKET FLAP: Attach yarn at top of slit and work 7 sc along one side, ch 1 to turn all rows. NEXT 2 ROWS: 1 sc in each sc, cut yarn at end of last row. Sew each short end of flap in position. Sew opening closed. (If desired make pocket of material and sew to opening.)

RIGHT FRONT: Work 1st 3 rows same as Left Front. 4th ROW: 1 sc, 1 dc in 1st dc, work 3 patterns, sc in next sc, ch 1, skip next dc, sc in next sc, dc in next dc, sc in next sc. 5th ROW: Work 1 pattern, sc in next sc, dc in next dc, ch 1, (buttonhole) work 4 patterns, 1 sc, 1 dc in next sc. 6th, 7th and 8th ROWS: Same as 6th, 7th and 8th rows of Left Front. 9th ROW: Work 1 pattern, sc in next sc, ch 1, skip next dc (buttonhole), work 6 patterns, 1 sc, 1 dc in next sc. 10th ROW: Work in same manner as 10th row of Left Front working 1 dc over the ch 1. Continue in same manner as Left Front working 3rd buttonhole in 14th and 15th rows. Work pocket

flap in same manner attaching yarn at lower end of slit.

SLEEVES: Ch 6, sc in 2nd st from hook, dc in next st, sc in next st, dc in next st, 1 sc, 1 dc in next st, ch 1 to turn all rows. 2nd ROW: 1 sc, 1 dc in 1st dc, work 2 patterns, 1 sc, 1 dc in next sc. 3rd ROW: 1 sc, 1 dc in 1st dc, work 3 patterns, 1 sc, 1 dc in next sc. NEXT 8 ROWS: Work in same manner as last row having 1 more pattern in each row. 12th ROW: 1 sc, 1 dc in 1st dc, work 12 patterns, sc in next sc. 13th ROW: Work 13 patterns, sc in next sc. 14th ROW: Decrease in 1st 2 sts (to decrease: * insert hook in next st, pull loop through, repeat from * once, yarn over and work off all loops at one time), work 11 patterns, sc in next sc, decrease in next 2 sts. 15th ROW: Skip the decreased st, work 11 patterns, decrease in next 2 sts. 16th ROW: Sc in decreased st, dc in next dc, work 10 patterns, sc in next sc. 17th ROW: Work 11 patterns, sc in next sc, repeat last row 6 times, cut yarn at end of last row.

COLLAR: Ch 37, sc in 2nd st from hook, 1 sc in each remaining st of ch, ch 1 to turn all rows. 2nd ROW: Working in sc increase 1 sc in the 2nd st from the beginning of the row and 1 sc in 2nd st from end. 3rd ROW: Increase 1 sc in the 3rd st from the beginning and 1 sc in the 3rd st from the end. 4th and 5th ROWS: Increase 1 sc in the 4th st from the beginning and 1 sc in the 4th st from the end in each row. 6th ROW: 1 sc in each of the 1st 3 sc, 2 sc in next sc, 1 sc in each of the next 2 sc, 2 sc in next sc, 1 sc in each of the next 30 sc, 2 sc in next sc, 1 sc in each of the next 2 sc, 2 sc in next sc, 1 sc in each of the next 3 sc, cut yarn. 7th ROW: With wrong side of last row toward you attach yarn in 1st st at Neck Edge, work 1 sc in each row down side, 1 sc in each sc along lower edge and 1 sc in each row up other side, join, cut yarn. Pin Collar to Jacket 3 sts in from each end of Jacket Fronts having the wrong side of Collar and the right side of Jacket together. Sew Jacket to Collar easing in any fullness. Sew Buttons in position.





"Bulky Cardigan"

2 years

Illustrated on page 24

Materials Required:

AMERICAN THREAD COMPANY

"DAWN" BULKY YARN

8 ounces White or color of your choice

1 pr. knitting needles No. 7 and No. 10½ OR ANY SIZE NEEDLES WHICH WILL RESULT IN STITCH GAUGE BELOW

6 - ½ inch buttons

¾ yard 1 inch grosgrain ribbon

GAUGE: for 10½ needles

7 sts = 2 inches 11 rows = 2 inches

BACK: With No. 7 needles cast on 44 stitches (sts) and work in ribbing of Knit (K) 1, Purl (P) 1 for 1½ inches. Change to No. 10½ needles and work in stockinette st (K 1 row, P 1 row) until section measures 7½ inches from beginning ending with a P row. **SHAPE RAGLAN ARMHOLE:** ** Slip (sl) 1, K 1, pass sl st over K st (p.s.s.o.), * K 1, P 1, repeat from * across row to within last 2 sts, K 2 together (tog). 2nd ROW: K the P st and P the K st for seed st pattern. 3rd ROW: Work in seed st pattern decreasing 1 st at beginning and end of row. 4th ROW: Same as 2nd row. Work 6 rows in stockinette st decreasing 1 st at beginning and end of every K row. Repeat from ** until 16 sts remain, place 16 sts on a stitch holder.

RIGHT FRONT: With No. 7 needles cast on 24 sts and work in ribbing of K 1, P 1 for 1½ inches. Change to No. 10½ needles and work in stockinette st until section measures 7½ inches from beginning. **SHAPE RAGLAN ARMHOLE:** Working in seed st pattern decrease 1 st at end of row. Work 1 row even in seed st pattern. Repeat last 2 rows once. Work next 6 rows in stockinette st decreasing 1 st at end of every K row. Repeat from 1st row of Armhole shaping until 10 sts remain. Place 10 sts on a stitch holder. Place markers for 6 evenly spaced buttons having 1st marker ¾ inch from lower edge and last marker 2 inches from Neck edge.

LEFT FRONT: Work same as Right Front reversing the shaping and working Buttonholes to correspond to markers.

BUTTONHOLES: Starting at Front Edge work 2 sts, yarn over, P 2 tog. In next row work a st in the yarn over st.

SLEEVES: With No. 7 needles cast on 26 sts and work in ribbing of K 1, P 1 for 1½ inches. Change to No. 10½ needles and work in stockinette st increas-

ing 1 st at beginning and end of row every 1½ inches 4 times. Continue in stockinette st until Sleeve measures 8½ inches. Work Raglan shaping same as Back until 6 sts remain. Place 6 sts on a holder. Block each section. Sew Underarm and Sleeve seams. Sew Sleeves in position.

COLLAR: Starting at left Front Edge and with No. 7 needles slip all sts from holders. Attach yarn and work 4 rows in ribbing of K 1, P 1 decreasing 2 sts evenly spaced in 1st row. Then work in seed st pattern for 2 inches, bind off. **FINISHING:** Face each Front edge with grosgrain ribbon cutting Buttonholes in ribbon to correspond. Sew Buttons in position. Sew snap fastener at Neckedge.

"Bulky Slipon"

2 years

Illustrated on page 24

Materials Required:

AMERICAN THREAD COMPANY

"DAWN" BULKY YARN

8 ounces Crimson or color of your choice

1 pr. No. 7 and No. 10½ knitting needles

1 set double pointed needles No. 7 OR ANY SIZE NEEDLES WHICH WILL RESULT IN STITCH GAUGE BELOW

GAUGE: for 10½ needles

7 sts = 2 inches 11 rows = 2 inches

Work Back and Front same as Back of Cardigan. Work Sleeves same as Sleeves of Cardigan. Block each section. Sew Underarm and Sleeve seams. Sew Sleeves in position.

COLLAR: Slip sts from stitch holders onto double pointed needles and work 4 rows in ribbing of K 1, P 1 increasing 4 sts evenly spaced in 1st row of ribbing; then work in seed st pattern for 2¼ inches, bind off.



by 3 ds, 6 ds, cl r, turn, $\frac{1}{8}$ inch space. R, 3 ds, 2 p sep by 3 ds, 3 ds, join to center p of large r of previous scallop, 3 ds, 2 p sep by 3 ds, 3 ds, cl r, * turn, $\frac{1}{8}$ inch space. R, 6 ds, p, 6 ds, cl r, turn, $\frac{1}{8}$ inch space. R, 3 ds, join to last p of last large r, 3 ds, p, 3 ds, join to center p of next large r of previous scallop, 3 ds, 2 sep by 3 ds, cl r. Repeat from * once, turn, $\frac{1}{8}$ inch space. R, 6 ds, p, 6 ds, cl r, turn. * R, 3 ds, join to last p of last large r, 3 ds, 4 p sep by 3 ds, 3 ds, cl r. Repeat from * twice, turn and continue in same manner for desired length joining last 3 large rings at center picots of 1st 3 large rings, tie and cut.

INSERTION: R, 3 ds, p, 3 ds, join to 1st free p of 1st small r, 3 ds, p, 3 ds, cl r, turn, $\frac{1}{8}$ inch space. R, 3 ds, p, 3 ds, cl r, turn, $\frac{1}{8}$ inch space. R, 3 ds, join to last p of 1st r, 3 ds, join to next free p of next r of scallop, 3 ds, p, 3 ds, cl r, turn, $\frac{1}{8}$ inch space. R, 3 ds, join to free p of small r, 3 ds, cl r, turn, $\frac{1}{8}$ inch space. R, 3 ds, join to last p of last large r, 3 ds, join to next free p of scallop, 3 ds, cl r, turn. Repeat in same manner all around, join, tie and cut. 2nd ROW: R, 3 ds, join in joining p of 2 small rings, 3 ds, cl r, turn, $\frac{1}{8}$ inch space. R, 3 ds, 3 p sep by 3 ds, 3 ds, cl r, turn, $\frac{1}{8}$ inch space. R, 3 ds, join in same joining of 2 small rings, 3 ds, cl r, turn, $\frac{1}{8}$ inch space. R, 3 ds, join to last p of last large r, 3 ds, 2 p sep by 3 ds, 3 ds, cl r, turn, $\frac{1}{8}$ inch space. R, 3 ds, join in joining of next 2 small rings, 3 ds, cl r, turn, $\frac{1}{8}$ inch space. Repeat in same manner all around, join, tie and cut. Sew in position to hem of dress. Lace ribbon through insertion. Trim with small bows.

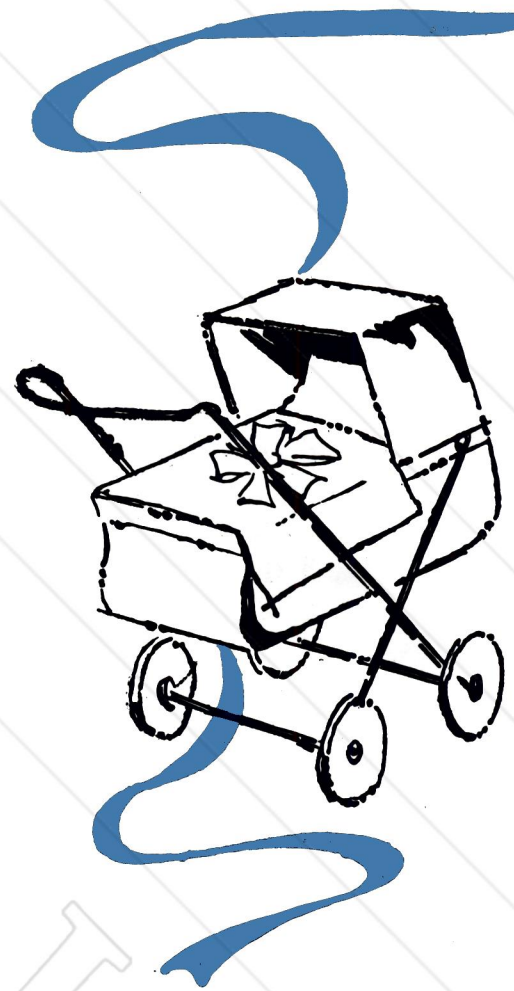
NECK AND CUFF EDGE: R, 3 ds, p, 3 ds, 3 p sep by 2 ds, 3 ds, p, 3 ds, cl r, * $\frac{3}{16}$ inch space. R, 3 ds, join to last p of last r, 3 ds, 3 p sep by 2 ds, 3 ds, p, 3 ds, cl r. Repeat from * for desired length for cuff and neck edge. Sew edging in position. With "STAR" SIX STRAND MERCERIZED EMBROIDERY COTTON, embroider name and date of birth inside any suitable transfer pattern of a dainty floral wreath or design of your choice.

TATTED CAP

SIDE SECTION: Work 19 scallops or length desired with insertion same as for dress. Work a 2nd section same as above joining the 2 sections together in last row of insertion at center picots.

BACK SECTION: Work 6 scallops with insertion, then work a 2nd section of 6 scallops joining in last row of insertion at center picots. R, 3 ds, p, 3 ds, join to center p of next to corner large r of scallop of one short edge of back section, 3 ds, p, 3 ds, cl r, turn, $\frac{1}{8}$ inch space. R, 3 ds, 3 p sep by 3 ds, 3 ds, cl r, turn, $\frac{1}{8}$ inch space. R, 3 ds, join to last p of 1st r, 3 ds, join to center p of next large r of same scallop, 3 ds, p, 3 ds, cl r, turn, $\frac{1}{8}$ inch space. R, 3 ds, join to last p of 2nd r, 3 ds, 2 p sep by 3 ds, 3 ds, cl r, turn, $\frac{1}{8}$ inch space. * R, 3 ds, join to last p of next to last r made, 3 ds, join to center p of next r of scallop, 3 ds, p, 3 ds, cl r, turn, $\frac{1}{8}$ inch

space. R, 3 ds, join to last p of next to last r made, 3 ds, 2 p sep by 3 ds, 3 ds, cl r, turn, $\frac{1}{8}$ inch space. Repeat from * once. R, 3 ds, join to last p of next to last r, 3 ds, 2 p sep by 3 ds, 3 ds, cl r. R, 3 ds, join to last p of last r, 3 ds, p, 3 ds, join to free p of insertion, 3 ds, 2 p sep by 3 ds, 3 ds, cl r. R, 3 ds, join to last p of last r, 3 ds, 2 p sep by 3 ds, 3 ds, cl r, (clover), turn, $\frac{1}{8}$ inch space. R, 3 ds, join to last p of corresponding r, 3 ds, 2 p sep by 3 ds, 3 ds, cl r. * R, 3 ds, join to last p of last r, 3 ds, 2 p sep by 3 ds, 3 ds, cl r. Repeat from * once (3 ring group), turn, $\frac{1}{8}$ inch space. R, 3 ds, join to last p of last r of clover, 3 ds, 2 p sep by 3 ds, 3 ds, cl r. R, 3 ds, join to last p of last r, 3 ds, p, 3 ds, join to next free p of insertion, 3 ds, join to next free p of insertion, 3 ds, 2 p sep by 3 ds, 3 ds, cl r. R, 3 ds, join to last p of last r, 3 ds, 2 p sep by 3 ds, 3 ds, cl r, turn, $\frac{1}{8}$ inch space. R, 3 ds, join to last p of last 3 ring group, 3 ds, 2 p sep by 3 ds, 3 ds, cl r. * R, 3 ds, join to last p of last r, 3 ds, 2 p sep by 3 ds, 3 ds, cl r. Repeat from * once, turn, $\frac{1}{8}$ inch space. R, 3 ds, join to last p of last r of clover, 3 ds, 2 p sep by 3 ds, 3 ds, cl r. R, 3 ds, join to last p of last r, 3 ds, p, 3 ds, join to next free p of insertion, 3 ds, 2 p sep by 3 ds, 3 ds, cl r. R, 3 ds, join to last p of last r, 3 ds, 2 p sep by 3 ds, 3 ds, cl r, turn, $\frac{1}{8}$ inch space. R, 3 ds, join to last p of last 3 ring group, 3 ds, 2 p sep by 3 ds, 3 ds, cl r. * R, 3 ds, join to last p of last r, 3 ds, 2 p sep by 3 ds, 3 ds, cl r. Repeat from * once, turn, $\frac{1}{8}$ inch space. R, 3 ds, join to last p of last r of clover, 3 ds, 2 p sep by 3 ds, 3 ds, cl r. R, 3 ds, join to last p of last r, 3 ds, p, 3 ds, join to next free p of insertion, 3 ds, 2 p sep by 3 ds, 3 ds, cl r. R, 3 ds, join to last p of last r, 3 ds, 2 p sep by 3 ds, 3 ds, cl r, turn, $\frac{1}{8}$ inch space, then complete same as beginning of row until 4 large rings of next scallop are worked, tie and cut. This completes top edge of back section. **JOIN FRONT AND BACK SECTIONS TOGETHER AS FOLLOWS:** R, 2 ds, join to center p of corner r of side scallop at lower edge of side section, 2 ds, cl r, turn, $\frac{1}{8}$ inch space. R, 2 ds, join to center p of corner r of lower edge of back section, 2 ds, cl r, turn, $\frac{1}{8}$ inch space. * R, 2 ds, join to center p of next r of side scallop of side section, 2 ds, cl r, turn, $\frac{1}{8}$ inch space. R, 2 ds, join to center p of next r of scallop of back section, 2 ds, cl r, turn, $\frac{1}{8}$ inch space. Repeat from * twice. R, 2 ds, skip next r of same scallop and next r of next scallop of side section, join in center p of next corner r, 2 ds, cl r, turn, $\frac{1}{8}$ inch space. R, 2 ds, skip center p of next 2 rings of back section, join in center p of next r, 2 ds, cl r, turn, $\frac{1}{8}$ inch space. Continue until all rings of side and back sections are joined at side, then join side section and back sections together across top joining 2 rings of side section to 1 ring of back section 3 times at each corner and 5 times at center of back section and working in each picot of corner r of back section. Complete other side same as 1st side, tie and cut. **NECK BAND:** Work 1st and 2nd rows of insertion across lower edge of cap joining center p of 1st r of insertion to center p of next to corner r of cap. Lace ribbon through the 2 rows of insertion at center back of cap, through the 2 rows of insertion across side section of cap and through the insertion at neck band as illustrated. Place tatted cap over satin cap and sew together easing the fullness around front. Finish with ties at each side.



A Cover for Lover

SHAWL
32" x 34"

Materials Required:

AMERICAN THREAD COMPANY
"DAWN" NYLON or NYLON POMPADOOR or
"DAWN" BABY YARN

9 ounces White and
"STAR" SIX STRAND MERCERIZED
EMBROIDERY COTTON, Article 50

1 skein each Dk. Spring Green No. 904 and Yellow
No. 1006

2 skeins Dk. Sky Blue No. 1033 or colors of your
choice

1 pr. Knitting Needles No. 4 OR ANY SIZE
NEEDLES WHICH WILL RESULT IN
STITCH GAUGE BELOW.

1 1/4 yds 1/4 inch Blue ribbon

GAUGE: 7 stitches = 1 inch

Cast on 243 stitches (sts), * Knit (K) 1, Purl (P) 1,
repeat from *, across row ending with K 1. NEXT
ROW: * K 1, P 1 (seed st), repeat from * across
row ending with K 1. Repeat last row until work
measures 6 inches from beginning. START PAT-
TERN: * K 1, P 1, repeat from * 20 times, K 1, K 2

DIRECTIONS FOR TWO TONE COVER ON PAGE 30

together (tog), yarn over (yo), * K 2, K 2 tog, yo,
repeat from * to within the last 46 sts, K 2, P 1, * K
1, P 1, repeat from * across remainder of row ending
with K 1. 2nd ROW: * K 1, P 1, repeat from * 21
times, P 2, * P 1, yo, P 2 tog, P 1, repeat from * to
within last 45 sts, P 2, * K 1, P 1, repeat from * across
remainder of row ending with K 1. 3rd ROW: Work
the 1st 43 sts in seed st, K 2, * K 2 tog, yo, K 2, repeat
from * to within last 46 sts, K 2 tog, yo, work
remainder of row in seed st. 4th ROW: Work 1st
44 sts in seed st, P 1, * P 2, P 2 tog, yo, repeat from *
to within last 46 sts, P 3, work remainder of row
in seed st. 5th ROW: Work 1st 43 sts in seed st, yo,

Continued on page 30





A Throw for Joe



WOVEN CARRIAGE COVER · 27" x 37" without fringe

Materials Required:

AMERICAN THREAD COMPANY
"DAWN" BULKY YARN

18 ounces Navy

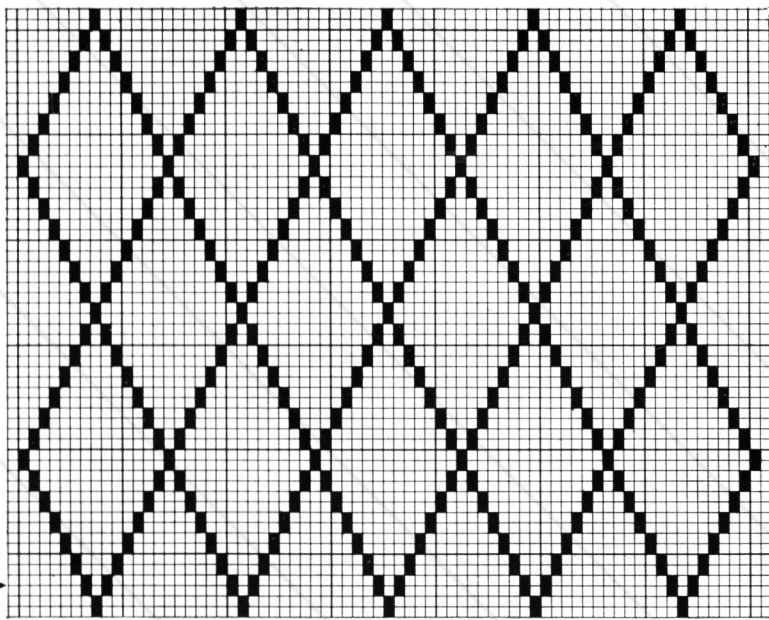
2 ounces each Crimson and White or colors of your choice

Wooden crochet hook No. 10 OR ANY SIZE HOOK WHICH WILL RESULT IN STITCH GAUGE BELOW

1 Weaving needle

GAUGE: 5 dc = 2 inches 3 rows = 2 inches
With Navy chain (ch) 75, double crochet (dc) in 4th stitch (st) from hook, 1 dc in each of the next 6 sts of ch, * ch 1, skip next st, 1 dc in each of the next 13 sts of ch, repeat from * 3 times, ch 1, skip

Continued on page 30



□ = DC ■ = OPEN MESH

Continued from page 28

slip (sl) 1, K 1, pass sl st over K st (p.s.s.o.), K 1, * K 1, yo, sl 1, K 1, p.s.s.o., K 1, repeat from * to within last 45 sts, K 1, work remainder of row in seed st. 6th ROW: Work 1st 44 sts in seed st, P 1, * P 2 tog, yo, P 2, repeat from * to within last 46 sts, P 2 tog, yo, P 1, work remainder of row in seed st. Repeat the last 6 rows until Shawl measures 30 inches from beginning. Work in seed st for 6 inches bind off. Sketch corner designs on tissue paper and pin at each corner. Working over paper with "STAR" SIX STRAND MERCERIZED EMBROIDERY COTTON, embroider flowers in Blue using a Lazy Daisy stitch. Outline stems in Green. Embroider a French Knot in center of each flower with Yellow. Finish groups of flowers with ribbon bows as illustrated.



25" x 33" *Illustrated on page 28*

Materials Required:

AMERICAN THREAD COMPANY

"DAWN" BULKY YARN

12 ounces Pearl Gray

8 ounces Shell Pink or colors of your choice

Plastic crochet hook size J OR ANY SIZE HOOK

WHICH WILL RESULT IN STITCH GAUGE BELOW.

2 yds. 3 inch ribbon

GAUGE: 6 sts = 2 inches

With Gray chain (ch) 50 (to measure about 19

inches), single crochet (sc) in 2nd stitch (st) from

hook, 1 sc in each remaining st of ch, ch 1, turn.

2nd ROW: Sc in 1st sc, slip stitch (sl st) in next

st, * double crochet (dc) in next st, sl st in next st,

repeat from * across row to within last st, sc in last

st, ch 1, turn. 3rd ROW: Sc in 1st sc, dc in next

sl st, * sl st in next dc, dc in next sl st, repeat

from * across row ending with sc in last sc, ch 1,

turn. 4th ROW: Sc in 1st sc, * sl st in next dc, dc

in next sl st, repeat from * across row ending with

sl st in next dc, sc in last sc, ch 1, turn. Repeat the

3rd and 4th rows until piece measures 27 inches.

NEXT ROW: 1 sc in each st working 3 sc in end st,

then work a row of sc down long side, 3 sc in next

corner st, cut yarn. Do not work across short side.

Attach Gray at opposite side and work 3 sc in same

space, work a row of sc up other long side working

2 sc in same st as 1st st at next corner, join, cut Gray.

BORDER: Attach Pink and work 1 sc in each st

working 3 sc in center st at each corner, join. 2nd

ROW. Sl st in same space, dc in next st, * sl st in

next st, dc in next st, repeat from * all around, join,

ch 1, turn. 3rd ROW: Work a dc in each sl st and a

sl st in each dc working 3 sts in center st at each

corner, join, turn. Repeat the last 3 rows once.

Repeat the last row twice. Work 1st, 2nd and 3rd

rows of Border, cut yarn at end of last row. Finish with Bow as illustrated.

WOVEN CARRIAGE COVER

Continued from page 29

next st, 1 dc in each of the next 8 sts, turn. 2nd ROW: Ch 3 (counts as 1 dc), 1 dc in each of the next 6 dc, * ch 1, skip next dc, dc in next st of ch (open mesh), ch 1, skip next dc, 1 dc in each of the next 11 dc, repeat from * 3 times, ch 1, skip next dc, dc in next st of ch, ch 1, skip next dc, 1 dc in each of the next 7 dc, turn. Continue in this manner following chart on page 29. Each block represents 1 dc. Each solid block represents 1 open mesh. Repeat from 2nd row of chart for other half of carriage cover.

WEAVING: Cover is woven with 2 colors through all open meshes to form diamond pattern. Using a double strand of yarn first weave White through meshes then Crimson through same meshes leaving a 6 inch length for fringe on each end. 1st ROW: With White weave diagonally starting in 1st open mesh in lower right side corner to last open mesh in upper left side corner as follows: insert needle up through 1st mesh, * down through next mesh, up through next mesh, repeat from * across row ending with up through dc to right of last mesh. 2nd ROW: Insert needle up through next mesh to the left and weave in same manner as 1st row to last mesh on left side of carriage cover, then weave to the right and complete diamond ending with up through dc to left of last mesh. 3rd, 4th and 5th ROWS: Insert needle up through next mesh and weave in same manner as 1st row to next mesh on left side of carriage cover, then weave to the right completing rows same as 2nd row. Starting in left hand corner in open mesh weaving diagonally to the right work same as 1st row. Then complete weaving diamonds in same manner. With Crimson weave diagonally starting in 1st open mesh in lower right side corner to last open mesh in upper left side corner as follows: insert needle down through dc to left of 1st mesh, * up through next mesh to right of White, down through next mesh, repeat from * twice, up through next mesh, * down through next mesh to left of White, up through next mesh, repeat from * twice, down through next mesh to right of White, repeat from 1st * 3 times ending last repeat with down in last mesh. NEXT ROW: Insert needle down through dc to left of next mesh, work in same manner as previous row to last mesh on left side of carriage cover, then complete diamond to right of White and complete weaving to correspond.

NOTE: All rows of 5 diamonds, White is woven on outside of Crimson. All rows of 4 diamonds, Crimson is woven on outside of White.

FRINGE: Wind Navy over a 6 inch cardboard, cut one end. Double one strand in half and knot through each st across each short side. Knot ends of White and Crimson in same manner.

Continued from page 15

wrong side of 1st row toward you, working along opposite side of starting ch, attach Blue in 1st st, sc in same space, * dc in next st, sc in next st, repeat from * across row, ch 1, turn. 19th ROW: Sl st in each of the next 8 sts, sc in next st, 1 dc in each st to within last 9 sts, sc in next st, sl st in next st, ch 1, turn. 20th ROW: Skip the sl st, sl st in each of the next 8 sts, sc in next dc, * dc in next dc, sc in next dc, repeat from * to within last 8 sts, sl st in next st, ch 1, turn. 21st ROW: Skip the sl st, work remainder of row same as 19th row. 22nd ROW: Same as 20th row, cut thread. Sew very narrow seam.

CUFF: With wrong side of last row toward you, attach Blue at seam and work 70 sc all around gathering sleeve at center, join, ch 1, turn. NEXT ROW: 1 sc in each sc, join, ch 3, turn. NEXT ROW: 1 dc in each sc, join in 3rd st of ch, ch 1, turn. NEXT ROW: * Sc in next dc, dc in next sc, repeat from * all around, join, ch 3, turn. NEXT ROW: 1 dc in each st, join do not turn. NEXT ROW: Sl st in each dc, cut thread. Sew Sleeves in position.

COLLAR: With Blue ch 4, 2 dc in 4th st from hook, ch 1, turn. 2nd ROW: Sc in 1st dc, dc in next dc, sc in 3rd st of ch, ch 3, turn. 3rd ROW: Working in dc increase 1 st at beginning of row, ch 1, turn. 4th ROW: * Sc in next dc, dc in next dc, repeat from * across row, sc in same space as last dc, ch 3, turn. Repeat the last 2 rows 10 times, ch 33, lay work aside. Work another section in same manner reversing the shaping but repeat the last 2 rows 9 times. NEXT ROW: Same as 3rd row reversing the shaping, cut thread, turn. Pick up 1st section, working across 2nd section, work 1 sc, 1 dc in 1st dc, * sc in next dc, dc in next dc, repeat from * across row ending with sc in last st, ch 3, turn. NEXT ROW: Work 1 dc in each st of both sections and 1 dc in each st of ch, ch 1, turn. NEXT ROW: Sc in 1st dc, * dc in next dc, sc in next dc, repeat from * across row, ch 3, turn. NEXT ROW: 1 dc in each st, ch 1, turn. Repeat last 2 rows 9 times, cut thread. With right side of work toward you attach Blue at one point, working along the straight edges only work 69 sc on each side, 81 sc on top and 5 sc in each corner, cut thread, do not turn. Attach White in same point, work 2 dc in 1st and last sc, 1 dc in each dc and 5 dc in each corner st ending with a sl st in opposite point, ch 1, turn. NEXT ROW: Same as 2nd row, ch 1, turn. NEXT ROW: Sl st in each

st, cut thread. Sew Collar to Neck opening, placing each point at the 6th row up from center of opening.

SKIRT: With wrong side of work toward you, working across opposite side of starting ch of Front and Back sections, attach Blue in 1st st, ch 1 and work 98 sc, ch 3, turn. 2nd ROW: * 1 dc in each of the next 4 sc, 2 dc in next sc, repeat from * across row, ch 1, turn. 3rd ROW: Sc in 1st dc, * dc in next sc, sc in next dc, repeat from * across row, ch 3, turn. 4th ROW: Work same as 2nd row ending with 1 dc in each of the last 4 sts, ch 1, turn. 5th ROW: Same as 3rd row. 6th ROW: Same as 2nd row ending with 2 dc in last st. 7th ROW: Same as 3rd row. 8th ROW: 1 dc in each st, ch 1, turn. 9th ROW: Sc in 1st dc, * dc in next dc, sc in next dc, repeat from * across row, ch 3, turn. Repeat the last 2 rows 3 times, do not ch 3 at end of last row, join, turn. 16th ROW: Ch 3, working in dc, dec 1 st to have an even number of sts, join, ch 1, turn. 17th ROW: * Sc in next dc, dc in next dc, repeat from * all around, join in 1st sc, ch 3, turn. 18th ROW: 1 dc in each st, join, ch 1, turn. Repeat the last 2 rows 8 times; then repeat 17th row once, cut thread. Attach White in same space and repeat the 18th and 17th rows, cut thread. Attach Blue in same space and repeat the 18th and 17th rows. Repeat the last 4 rows twice. Working with Blue repeat the 18th and 17th rows 4 times or desired length, cut thread. With right side of work toward you attach Blue at top of side opening of Back and work 52 dc along Back opening only, ch 1 to turn all rows. NEXT 3 ROWS: 1 dc in each dc, cut thread. Sew a 5½ inch strip of Velcro to top of section just made. Sew another 5½ inch strip of Velcro to wrong side of Front opening.

BELT: With Blue ch 193 and work 1st 3 rows same as back omitting increases on 3rd row, cut thread. Line with grosgrain ribbon and sew buckle in position.

BIB: With Blue ch 35 and work 1st 17 rows same as Back. 18th ROW: Same as 2nd row of Back. 19th ROW: Same as 3rd row of Back. 20th ROW: Same as 2nd row, cut Blue, turn. 21st ROW: Attach White in 1st st, ch 3 and work 1 dc in each remaining st, ch 1, turn. 22nd ROW: Same as 2nd row of Back. 23rd ROW: Sl st across row, cut thread. Sew two 5 inch length of Velcro to right side of Bib forming a V. Sew a 5 inch length of Velcro to each side of Neck Opening.

KNITTING ABBREVIATIONS

K	Knit	Sl st	Slip Stitch
P	Purl	Tog	Together
St	Stitch	Y O	Yarn Over
Sts	Stitches	P.S.S.O.	Pass slip stitch over knit stitch

TATting ABBREVIATIONS

R	Ring	S P	Short Picot
L R	Large Ring	L P	Long Picot
S R	Small Ring	Ch	Chain
D or D S	Double or Double Stitch	Sp	Space
P	Picot	Sep	Separate
		Cl	Close

CROCHET ABBREVIATIONS

Ch	Chain
S c	Single Crochet
S d c	Short Double Crochet
D c	Double Crochet
Tr c	Treble Crochet
D tr c	Double Treble Crochet
Tr tr c	Treble Treble Crochet
Sl st	Slip Stitch
St	Stitch
Sts	Stitches

* (Asterisk) This symbol indicates that the instructions immediately following are to be repeated the given number of times plus the original.
**Are used in the same way.

American Thread Co.
STAR BABY BOOK No. 148

25¢

BABIES

are such fun to dress

KNITTING CROCHETING
TATTING

