

## The Antique Pattern Library

For more information, please see our website at:

<http://www.antiquepatternlibrary.org>



This is a scan of an antique book that is, to the best of our knowledge, in the public domain. The scan itself has been photo-edited for readability, and is licensed under the **Creative Commons** Attribution-NonCommercial-ShareAlike License. To view a copy of this license, visit <http://creativecommons.org/licenses/by-nc-sa/2.5/> or send a letter to Creative Commons, 559 Nathan Abbott Way, Stanford, California 94305, USA.

You may share copies or printouts of this scan freely. You may not sell copies or printouts.

Donated by

**Debra Carr**

**11/2010**

# J. & P. COATS



## FILET CROCHET BOOK No. 4

PRICE 10 CENTS  
DESIGNED BY  
ANNE ORR



COPYRIGHTED 1920  
BY  
J. & P. COATS (R. I.) INCORPORATED  
PAWTUCKET, R. I.

# J. & P. COATS

## FILET CROCHET BOOK No. 4

Designed by ANNE ORR

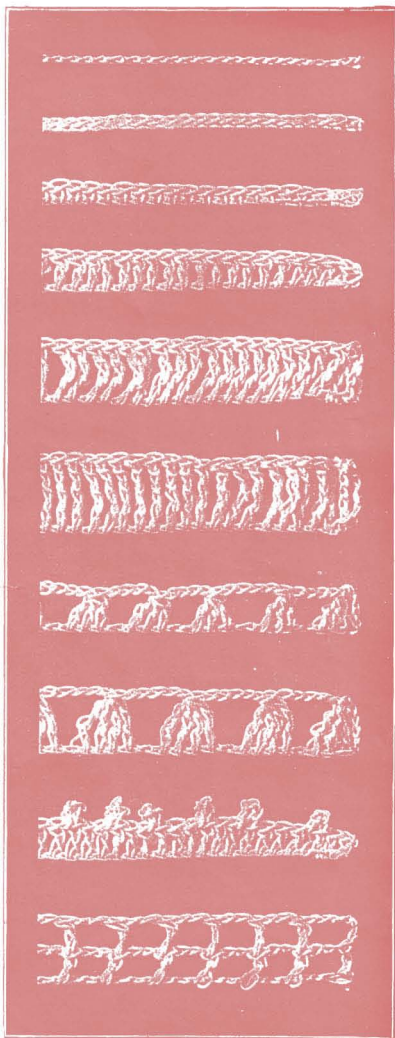
### TABLE OF CONTENTS

	PAGE		PAGE
Altar Cloth.....	12	Working Pattern for Church Laces .....	13
Boudoir Jacket and Cap.....	9	Working Pattern for Clover Leaf	
Boudoir Cap to match Gown on Cover .....	19	Sweater.....	10
Breakfast Gown .....	7	Working Pattern for Gown Yoke on	
Church Laces .....	12, 13	Cover.....	10
Clover Leaf Sweater.....	11	Working Pattern for Insertion End of	
Filet Shawl.....	15	Table Runner.....	17
Foundation Stitches.....	4, 5	Working Pattern for Invalid Jacket ..	18
Invalid's Jacket.....	19	Working Pattern for Jonquil Edge Yoke	
Cap to match Jacket.....	19	Working Pattern for Poppy Boudoir	
Jonquil Edge Yoke.....	22	Cap .....	19
Library Table Runner.....	17	Working Pattern for Poppy Bed Room	
Ripple Tail Sweater.....	15	to match Yoke on Cover.....	20
Sheet Insertion.....	20	Working Pattern for Ripple Tail	
Sleeveless Sweater.....	6	Sweater.....	14
Tea Wagon or Tea Tray Cover.....	17	Working Pattern for Shawl.....	14
Towel Insertion.....	20	Working Pattern for Slipper to match	
Tulip Slip-on .....	11	Breakfast Gown.....	8
Working Pattern for Boudoir Jacket ..	8	Working Pattern for Table Runner ..	16
Working Pattern for Chair or Lounge		Working Pattern for Tea Wagon	
Back.....	16	Top.....	21
J. & P. COATS CROCHET BOOKS	23	Working Pattern for Tulip Slip	
		On.....	10

THAT there is perpetual charm in nearly all crochet work is generally realized, but perhaps there are no articles that make a warmer appeal to lovers of the art of crochet than yokes and other lingerie garments.

There will be no doubt as to the attractiveness and durability of the articles if the novel designs in this book are reproduced with the cotton of superior quality—Coats Mercerized Crochet.

## Foundation Stitches and How to Make Them



1. **CHAIN STITCH (ch)**—Is the foundation of all crochet work. Begin by twisting the thread around the needle once, to form a loop, then \* throw the thread around the needle and draw through the loop. This forms one chain and is repeated from \* for the count or length desired.

2. **SLIP STITCH (sl st)**—Is most frequently used to join rows, or to slip invisibly from one part of the work to another. Having one loop on the needle, insert the needle in the stitch directed, draw the working thread through this stitch and the loop on the needle with one motion, thus making a flat, close stitch.

3. **SINGLE STITCH (s st)**—Having one loop on the needle, insert the needle in the stitch directed, draw the working thread through this stitch, making two on the needle, then draw the working thread through these two loops.

4. **TREBLE CROCHET (tr)**—Having one loop on the needle, throw thread around the needle, insert the needle in the stitch directed, draw working thread through this stitch, making three loops on needle, draw working thread through two loops and then through the remaining two loops. Three chains equal one treble in measure and in count.

5. **DOUBLE TREBLE CROCHET (d tr)**—Is made similarly to the treble, the difference being that the thread is thrown around the needle twice and the loops are worked off two at a time for three repeats.

6. **TRIPLE TREBLE CROCHET (tr tr)**—Has the thread thrown around the needle three times and the loops are worked off two at a time for four repeats.

7. **HALF TREBLE CROCHET (h tr)**—Is sometimes called "group stitch." Having a loop on the needle, throw thread over, insert needle in stitch directed, draw working thread through, draw through two loops, leaving two loops on needle, \* thread over, needle in next stitch, draw thread through, draw through two loops, leaving three loops on needle, repeat from \*, leaving four loops on needle, then draw thread through all four loops.

8. **HALF DOUBLE TREBLE (h d tr)**—Is made in the same manner, leaving the last operation of each double treble until the required number have been made and then taking off all the stitches at once.

9. **PICOTS (p)**—Are usually made by a chain of three or five, then a slip stitch in the first chain. When there is a variation of the above, it is specifically given in the directions.

10. **SPACES (sp)**—Are the open meshes of filet crochet. To form a space, make one treble, then chain two, skip two stitches of previous row and make another treble. This should result in a perfect square but perfection requires persistent practice as well as the correct sizes of needle and thread. For a space at the beginning of a row, chain five, which allows three for the treble on the edge, and two for the usual chain, two at top of space.

## Foundation Stitches and How to Make Them

11. **BLOCKS (bl)**—Are formed by working trebles in adjoining stitches for the required number. Where blocks are consecutive there are four trebles in the first block and three trebles in each following block. Therefore, to find the number of trebles in a row of blocks, multiply the number of blocks by three and add one; in two blocks there are seven trebles, in three blocks, ten trebles, etc.

12. **BLOCKS AND SPACES**—This illustration clearly shows the alternation of blocks and spaces in filet crochet. Counting from right to left, as the work is made, there are one block, two spaces, three blocks, one space. The next series of blocks is cut off. This would read in directions, 1 bl, 2 sp, 3 bl, 1 sp.

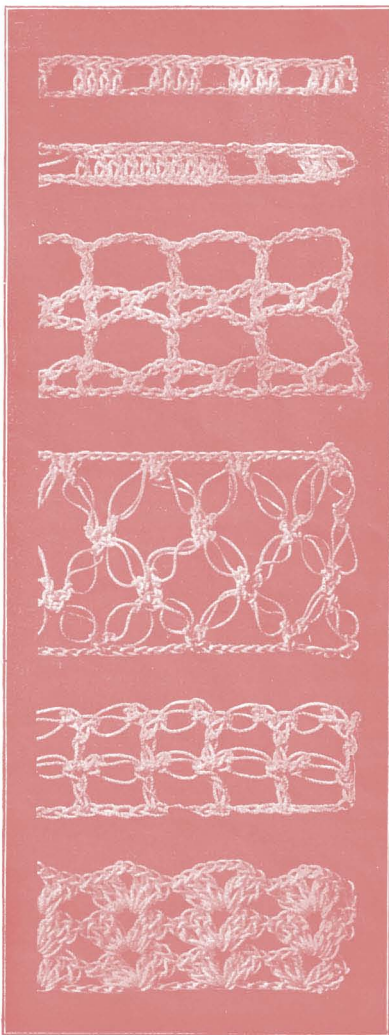
13. **LACET STITCH**—Make a foundation chain. **1st Row**—Allow three chains for edge treble, two for two chains and two more for two skipped stitches, work a single stitch in the next chain, \* ch 2, skip 2, tr in next, ch 2, sk 2, s st in next. Repeat from \* for row.

**2d Row**—Ch 3 for edge tr, ch 5 more, then tr in tr. \* ch 5, tr in tr. Repeat from \* for row. Repeat these two rows for the pattern.

14. **KNOT STITCH (k st)**—Varily known as Hail Stone or True Lovers' Knot, is made thus: Having one loop on the needle, draw it out to the length of 3 ch, thread over the needle and draw through, making an ordinary chain stitch, drawn out to three times its normal length. Then put the needle under that one of the 3 threads of the long loop which seems to lie by itself, draw the thread through and make a single stitch. This is the knot stitch. It is usually worked by making two, then fastening to the previous row by a single stitch unless the row was knot stitch, in which case, work one single stitch each side of the single stitch between the two long loops or knot stitches.

15. **LATTICE STITCH (lat st)**—Is combination of single knot stitches and trebles. Work a chain, then make one knot stitch, allow three chains for the first treble, and three for the skipped stitches, work a tr in next ch, \* one knot stitch, sk 3 ch, 1 tr. Repeat for length desired. This row is repeated for the pattern, working the tr in tr, each time, bringing the knot stitches over each other.

16. **SHELL (sh)**—May be worked with tr, d tr, or longer, stitches. They are made up of a given number of stitches on each half, separated by a given number of chain stitches. When worked on a foundation chain, a given number of stitches are skipped. When worked over another row of shells, each one is placed in the chain between the halves of the previous shell, or between two shells. In the illustration, the directions would be as follows: Having a chain, allow 3 for the first tr, two tr in 4th chain from needle, ch 2, 3 tr in same chain as last tr, \* skip 5 ch, in 6th ch work, 3 tr, 2 ch, and 3 tr. Repeat from \* across row. Ch 3 and turn at end of row. Second and all other rows, shell in shell.



# Sleeveless Sweater

WORKING PATTERN FOR SWEATER

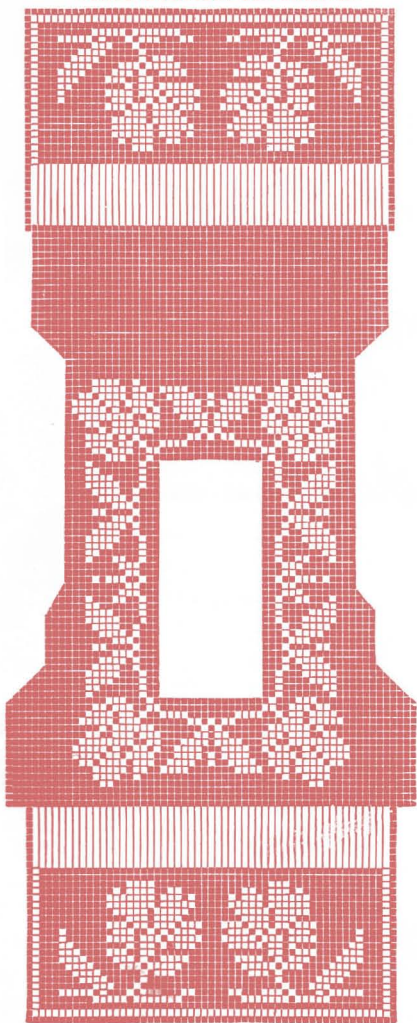


PLATE 17 FRONT OF SWEATER



PLATE 18

## DIRECTIONS FOR SLEEVELESS SWEATER

(Make three meshes to inch)

MATERIALS—Coats Mercerized Crochet No. 5. No. 2 Hook.

### MAKE BELT FIRST AS FOLLOWS:

Ch 22, on which make 21 s st, working up and down the belt 21 s st in each row, always taking up back loop only. 2 rows make a ridge and the belt is 116 ridges long.

Work along lower edge of belt one-half the length as follows:

1st, 2d and 3d Rows—Each 1 bl, 51 sp, 1b l, making 1 sp on each ridge of belt.

4th Row—Commence design and follow to bottom. On the other half of belt make just like first. This will be bottom of back.

On the upper edge of belt make one-half length as follows:

1st, 2d and 3d Rows—Each 53 sp.

4th Row—Follow design.

On the 17th row leave off the 15 center sp. Work up one side, narrowing for armhole as shown in design. When the back of neck is reached, break cotton and work up the other side like the first one. Join the two sides in back of neck with ch 45, on which make 15 sp. Work down back until it is as long as front. Sew to belt and sew up under arms.

### EDGE AROUND NECK AND ARMHOLES

Start in sp, \* 2 s st in sp, 2 s st in next st, 1 p. Repeat from \*.

# Breakfast Gown



PLATE 19

## DIRECTIONS FOR BREAKFAST GOWN

**MATERIALS**—Coats Mercerized Crochet No. 5. No. 8 Hook.  
Commence at lower edge of back, working cross-wise.

Ch 215.

1st Row—70 sp.

2d Row—1sp, 68 bl, 1 sp.

3d Row—1 sp, 1 bl, 66 sp, 1 bl, 1 sp

4th Row—Start design and follow.

After 17 rows are made leave off the 36 center rows and continue 17 rows up one side over the shoulder for 36 rows. Add 18 rows for front and follow design, making the front 17 rows deep. Break cotton and make the other shoulder and front like the first one.

### BEADING AROUND NECK

Start in top of sp, ch 8, \* 3 h d tr in 2d sp, ch 4, 1 d tr in 2d sp ch 4. Repeat from \*.

2d Row—\* 5 s st in sp, 1 p. Repeat from \*.

### CUFF

Commence at one end, working cross-wise (making 4 butterflies continuously like one shown in pattern).

Ch 41.

1st Row—12 sp.

2d Row—Follow design.

### EDGE AROUND CUFF

\* 3 s st in sp, 3 s st in next sp, 1 p. Repeat from \*.

### BEADING AROUND TOP

Like beading around neck.

### TOP OF POCKET

Same width as cuff, only 2 butterflies long, leaving two open meshes on outside of butterfly at ends of pocket.

### KEEPERS FOR SASH

Same width as cuff, only 1 butterfly long, with two open meshes on each side of butterfly.

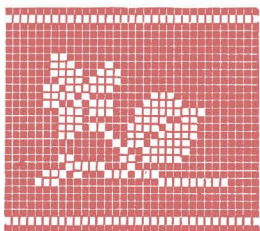


PLATE 20—WORKING PATTERN FOR SMALL MEDALLION

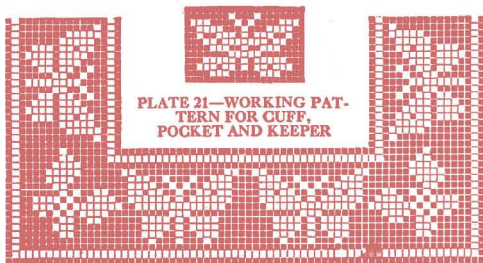


PLATE 21—WORKING PATTERN FOR CUFF, POCKET AND KEEPER

PLATE 22—WORKING PATTERN FOR YOKE



# Boudoir Jacket and Slipper

## WORKING PATTERN FOR BOUDOIR JACKET

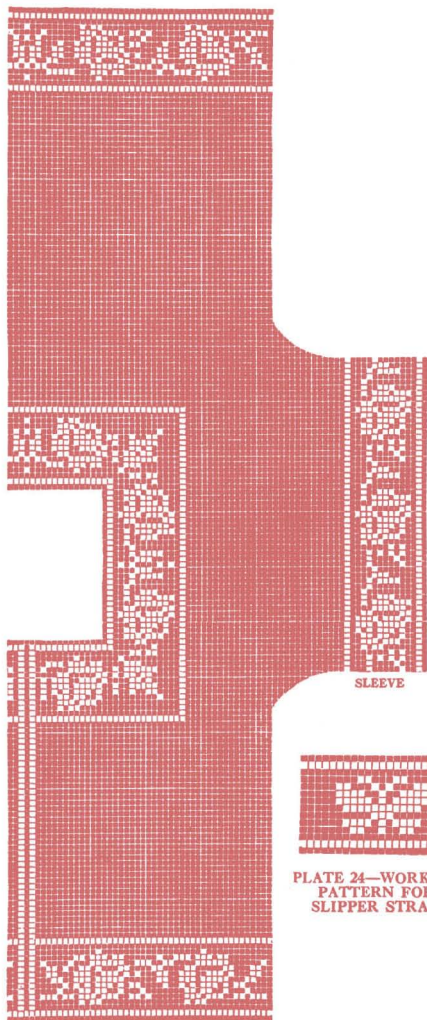


PLATE 23—FRONT OF JACKET

SLEEVE

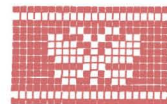


PLATE 24—WORKING PATTERN FOR SLIPPER STRAP

## DIRECTIONS FOR SLIPPER IN CROCHET

MATERIALS—Coats Mercerized Crochet No. 70. No. 14 Hook.

Commence at toe, working cross-wise.

Ch 24.

1st Row—7 bl.

2d Row—Add 4 bl at each end, 4 bl, 7 sp, 4 bl.

3d Row—Add 2 bl at each end, 2 bl, 15 sp, 2 bl.

4th Row—Add 1 bl at each end, 1 bl, 19 sp, 1 bl.

5th Row—Add 1 bl at each end, 1 bl, 21 sp, 1 bl.

On the 6th row commence design and follow, adding blocks at each end as shown in design.

When the toe is finished, drop off one side and work up the other side to center of back, break cotton and start the other side and work up to center of back, sew up in back.

### EDGE AROUND TOP

1st Row—Blocks around back and up to within 12 rows of center of toe.

2d Row—Blocks around back to within 2 blocks of each end of last row.

3d Row—Blocks around back to within 1 block of each end of last row.

4th Row—Start in top of bl, with ch 4, 1 d tr in next st, \* ch 4, 1 d tr in next bl, 1 d tr in next st. Repeat from \*.

5th and 6th Rows—Sp all around.

7th Row—\* 5 d tr in sp, 5 d tr around tr, 5 d tr around next tr, 5 d tr in sp, 5 d tr around tr, 5 d tr around next tr. Repeat from \*.

### STRAP

Commence at one end, working cross-wise.

Ch 39.

1st 8 Rows—Each 1 bl, 10 sp, 1 bl.

9th Row—Start cloud design and follow pattern.

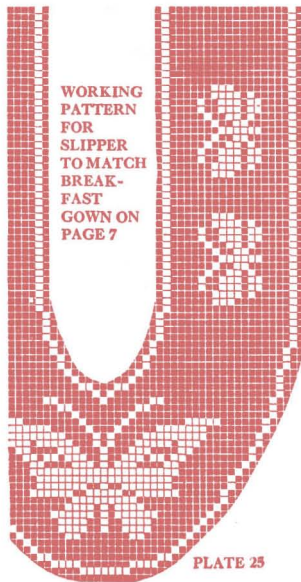


PLATE 25

## Boudoir Jacket and Cap to Match



PLATE 26  
DIRECTIONS FOR BOUDOIR CAP

MATERIALS—Coats "Silk Finish" Crochet Cotton. No. 7 Hook.

Commence at end of band, working cross-wise.

Ch 45.

1st Row—14 bl.

Next Five Rows—Each 1 bl, 12 sp, 1 bl.

Next Row—Start design and follow three times over the pattern.

CROWN—Ch 12, join.

1st Row—20 sc in ch.

2d Row—Ch 6, 1 sc in sc. Repeat all around.

3d Row—Ch 6, 1 sc in center of ch. Repeat all around.

Continue the same on the 7th row, widen every 4th mesh; after that, widen every 9th mesh on every 3d row. Continue the same until the crown is 15 inches in diameter. Join  $\frac{1}{2}$  of crown to the front band, gather the remainder of crown up to 9 inches.

### EDGE ALL AROUND

1st Row—Ch 6, 1 sl st in 2d mesh. Repeat.

2d Row—8 sc in each ch of 6. Repeat all around.

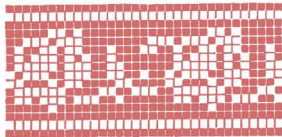


PLATE 28—WORKING PATTERN  
FOR CAP BAND



PLATE 27  
DIRECTIONS FOR BOUDOIR JACKET

MATERIALS—Coats Mercerized Crochet No. 5. No. 4 Hook.

(Make three and one-half meshes to inch)

Commence at bottom of back, working cross-wise.

Ch 270.

1st Row—89 bl.

2d Row—89 sp.

3d Row—Commence design and follow.

On the 57th row commence to widen for the sleeves. Follow design and drop off the back of neck on the 80th row. Continue working down one sleeve and one side of front, according to design. When one side is finished begin back where the back of neck was dropped off and make the other sleeve and front like the first one.

Sew up under arm and sleeves.

### EDGE AROUND NECK AND SLEEVES

Start in top of bl, ch 6 \* (1 tr in same st, ch 2), 5 times, 1 s st in 4th st. Repeat from \*.

### ROPE TO TIE AROUND WAIST

Cut 124 strands twice the required length, double and twist, finish with a tassel on each end.

### KEEPERS FOR ROPE ON EACH SIDE

Ch 23.

1st Row—6 sp, fasten off and sew to under arm.

### BUTTONS

Cover molds with pink silk and crochet a top just of s st as large as the top of button.

### LOOP TO FASTEN

Crochet a chain long enough to go over the button. Cover chain with s st.

# Working Patterns

CONTINUE PATTERN, FROM FRONT

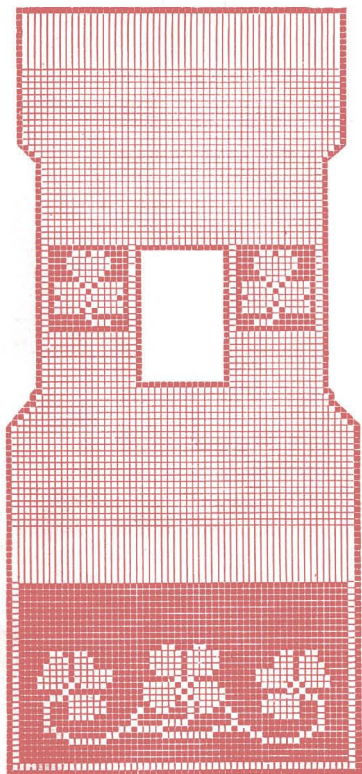


PLATE 29—FRONT OF SWEATER

WORKING PATTERN FOR TULIP SLIP-ON

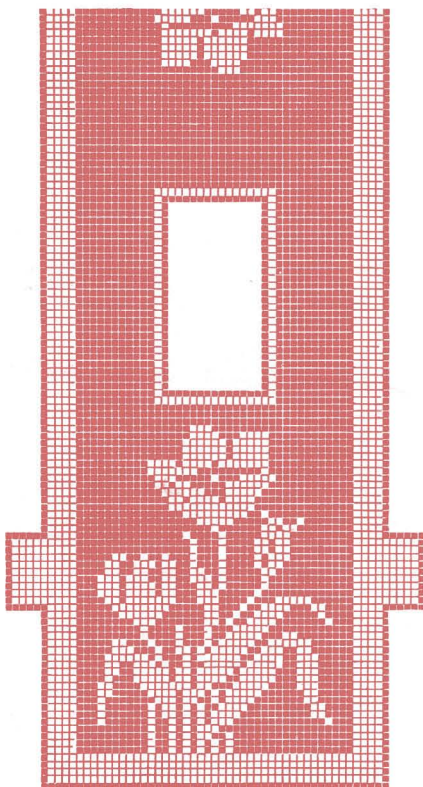


PLATE 30

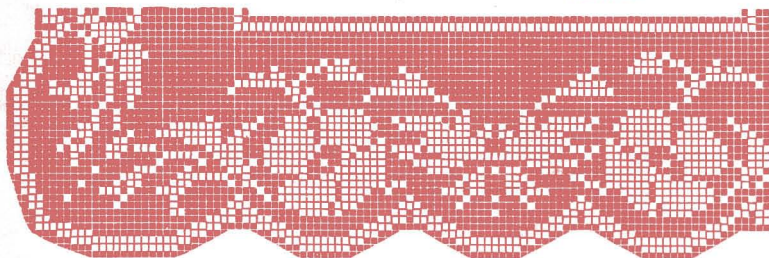


PLATE 31 WORKING PATTERN FOR GOWN YOKE ON COVER PAGE

# Sweater, Clover Design

CLOVER SWEATER



PLATE 32

## DIRECTIONS FOR CLOVER SWEATER

(Three meshes to inch)

**MATERIALS**—Coats Mercerized Crochet No. 5. No. 2 Hook.

**THE BELT IS MADE FIRST AS FOLLOWS:**

Ch 20, on which make 19 s st, working up and down the belt, 19 s st in each row, always taking up the back loop only. Each 2 rows make 1 ridge, the belt is made 110 ridges long. Work along the lower edge of belt one-half the length as follows:

**1st Row**—1 bl, 53 sp, 1 bl.

**Next 13 Rows**—Like the 1st row.

Commence design and follow to the bottom.

On the other half of belt make just like the 1st half, this will be the bottom of back.

On the upper edge of belt make one-half the length as follows:

**1st Row**—55 bl.

**Next 13 Rows**—Like the 1st row.

Follow design, dropping off 1 bl on each end of each row to form armhole.

On the 21st row, drop off the 15 center bl for front of neck, work up one shoulder, following design 23 rows, break cotton and work up the other shoulder like the first one, join shoulder in back of neck with ch 45 on which make 15 bl, continue 14 rows, then add 1 bl at each end for 2 rows to form armhole, continue down the back 13 rows, sew up under arm and sew back to top of belt.

**EDGE AROUND NECK AND ARMHOLES**

Start in top of bl, ch 8, \* 1 tr in next bl, 1 p, 1 tr in next bl, 1 p, 1 tr in next bl, 1 p, ch 5. Repeat from \*.

TULIP SLIP-ON



PLATE 33

## DIRECTIONS FOR TULIP SLIP-ON

(Make three meshes to the inch)

**MATERIALS**—Coats Mercerized Crochet No. 5. No. 2 Hook.

Start at bottom of back, working cross-wise.

Ch 144.

**1st 4 Rows**—Each 47 bl.

**5th Row**—Follow design.

After the 63d row, drop off the center meshes and for one shoulder and work over one shoulder, break cotton and work up the other shoulder, join the two shoulders in front with a chain of 45 on which make blocks for center of front. Work the front like the back.

**BELT UNDER ARM**

Join the 23d row of the front with the 23d row of the back with a chain of 24 on which make 8 bl, make 8 more rows of 8 bl each.

**EDGE ALL AROUND**

Fasten in top of bl, \* ch 3, 1 sl st in next bl, ch 3, 1 sl st in next bl, ch 3, 1 sl st in next bl, ch 5, 1 sl st in same bl, ch 7, 1 sl st in same bl, ch 5, 1 sl st in same bl. Repeat from \*.

# Church Laces

ALTAR CLOTH EDGE



PLATE 34

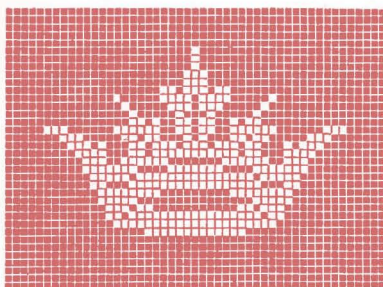


PLATE 35

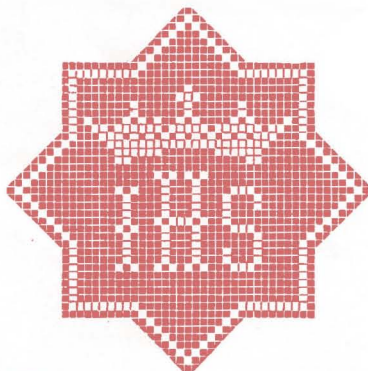


PLATE 36

Working Patterns on Pages 12 and 13 for Stole, Frontal, Corporal and Altar Cloths

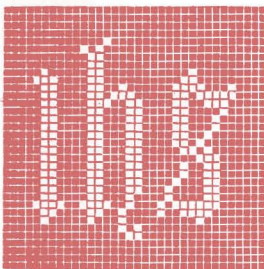


PLATE 37

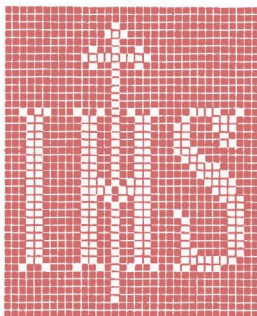


PLATE 38

## DIRECTIONS FOR ALTAR LACE

MATERIALS—Coats Mercerized Crochet No. 60. No. 13 Hook.

Commence at one end, working cross-wise.

Ch 189.

1st Row—2 bl, 46 sp, 5 bl, 3 sp, 2 bl, 2 sp, 2 bl.

2d Row—Add 2 bl at 1st end, 3 bl, 1 sp, 3 bl, 3 sp, 1 bl, 1 sp, 4 bl, 46 sp, 2 bl.

Follow design, repeating to make the required length.

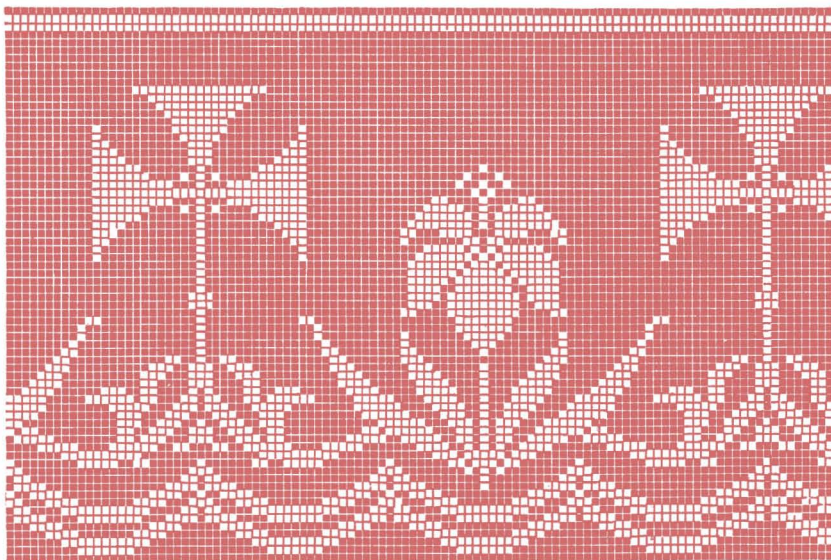


PLATE 39

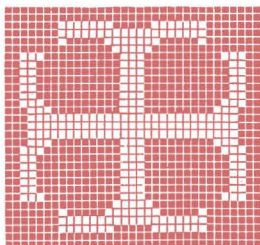


PLATE 40

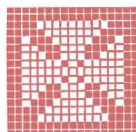


PLATE 43

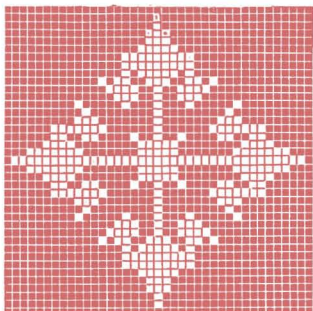


PLATE 41

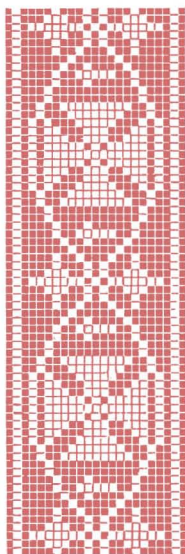


PLATE 42

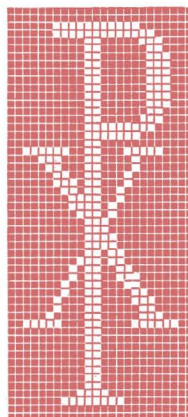
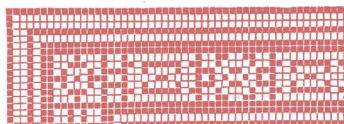


PLATE 44

# Working Patterns for Sweater and Shawl



ONE-HALF OF WIDTH  
AND LENGTH OF  
SHAWL

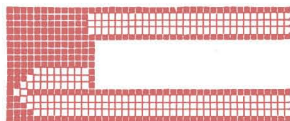


PLATE 46—BELT FOR SHAWL

PLATE 45

### DIRECTIONS FOR FILET SHAWL

MATERIALS—Coats "Silk Finish"  
Crochet Cotton. No. 8 Hook.  
(Make four meshes to inch)

Commence at one end, working  
cross-wise.

Ch 267.

1st Row—2 bl, 84 sp, 2 bl.

2d Row—88 bl.

3d Row—2 bl, 84 sp, 2 bl.

4th Row—2 bl, 1 sp, 82 bl, 1 sp, 2 bl.

5th and 6th Rows—2 bl, 1 sp, 1 bl, 80 sp, 1 bl, 1 sp, 2 bl.

7th Row—Follow design.

### BELT

Ch 5.

1st Row—1 bl.

2d Row—Add 1 bl at each end, 1 bl, 1 sp, 1 bl.

3d Row—2 bl, 1 sp, 2 bl.

### DIRECTIONS FOR FILET SHAWL

—Continued

4th to 13th Rows—3 bl, 1 sp, 3 bl.

14th Row—Add 5 sp and 3 bl on  
one side, 3 bl, 9 sp, 3 bl.

15th Row—3 bl, 9 sp, 3 bl.

Repeat the 15th row until it is the  
required length.

Make a point like it is on the 1st  
end, only on the other side of the belt.

Make a ch of 30 on each point, cover  
ch with 30 s st, fasten each end of ch  
to point to make a loop to go over the  
button. Sew belt to lower edge of  
back for 5 inches.

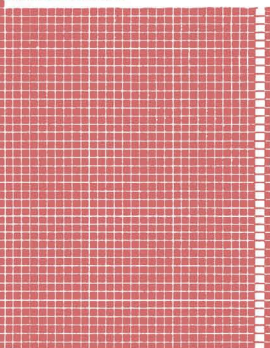
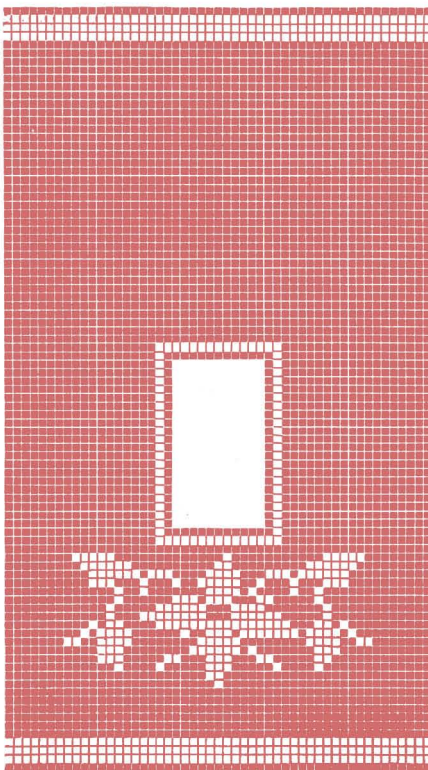
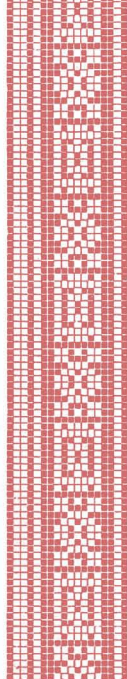


PLATE 47

WORKING PATTERN FOR RIP-  
PLE TAIL SWEATER

## Shawl and Sweater

### DIRECTIONS FOR RIPPLE TAIL SWEATER

MATERIALS—Coats "Silk Finish" Crochet Cotton. No. 8 Hook.

Start at bottom of waist in front.

Ch 156.

1st, 2d and 3d Rows—Each 51 bl.

Next 6 Rows—Each 51 sp.

Then commence design and follow.

On the 24th row add a ch of 96 on which make 30 sp, 1 bl.

On the 26th row make 15 bl in the center for the front of neck. On the next row, drop off the 13 center meshes and work up one shoulder and one sleeve for 22 rows, break thread and work the other shoulder and sleeve like the first one, then join the two sides in back of neck with a ch of 39 on which make 13 bl, continue across both sleeves and back until the sleeve is 41 meshes wide, drop off both sleeves and work down back 20 rows of sp, 3 rows solid bl, sew up under arm and sleeves.

#### RIPPLE AROUND BOTTOM

1st Row—1 tr over tr, ch 1, 1 tr in same tr, 1 tr in 2d tr, ch 1, 1 tr in same tr. Repeat all around.

2d Row—2 tr in ch 1, ch 1, 2 tr in same ch. Repeat.

3d Row—3 tr in ch 1, ch 1, 3 tr in same ch. Repeat.

Repeat 3d row 15 times.

#### RIPPLE AROUND SLEEVE

1st, 2d and 3d Rows—Like the 1st, 2d and 3d rows of ripple around bottom. Repeat 3d row 7 times.

#### EDGE AROUND NECK

Start in top of bl, \* ch 3, 1 s st in next bl, ch 3, 1 s st in next bl, 1 p. Repeat from \*.

SASH—Ch 3, turn.

1st Row—2 s st in ch, turn.

3d Row—3 s st, turn.

Increase 1 st at first end of each row until there are 24 s st, continue with 24 s st on each row until the sash is 48 inches long, narrow to a point by narrowing on 1st end of each row. Finish with a tassel.

### BACK VIEW OF FILET SHAWL



PLATE 49

### RIPPLE TAIL SWEATER



PLATE 48

### FILET SHAWL



PLATE 50



# Working Patterns for Library Table Runner and Chair Back

## DIRECTIONS FOR TABLE RUNNER

**MATERIALS**—Linen 2 yds. long, 30 inches wide. Coats Mercerized Crochet No. 30. No. 9 Hook.

Commence at lower endge, working cross-wise.

Ch 44.

1st Row—148 bl.

2d Row—1 sp, 146 bl, 1 sp.

3d and 4th Rows—1 sp, 1 bl, 144 sp, 1 bl, 1 sp.

5th Row—1 sp, 1 bl, 16 sp, 6 bl, 100 sp, 6 bl, 16 sp, 1 bl, 1 sp.

Follow design; on the 20th row, drop off 51 meshes on each edge, working up the middle as shown in design.

## EDGE ON BOTTOM

Work up and down.

Ch 9.

1st Row—2 sp, ch 5, turn.

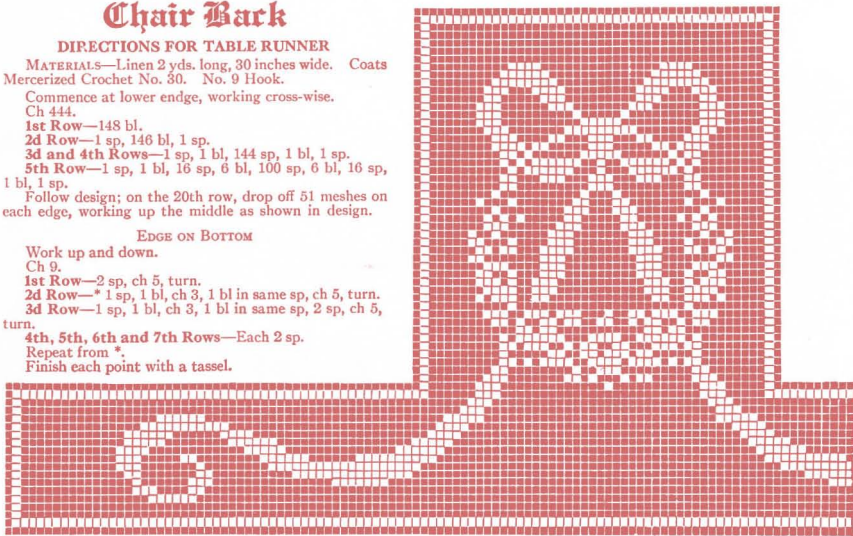
2d Row—\* 1 sp, 1 bl, ch 3, 1 bl in same sp, ch 5, turn.

3d Row—1 sp, 1 bl, ch 3, 1 bl in same sp, 2 sp, ch 5, turn.

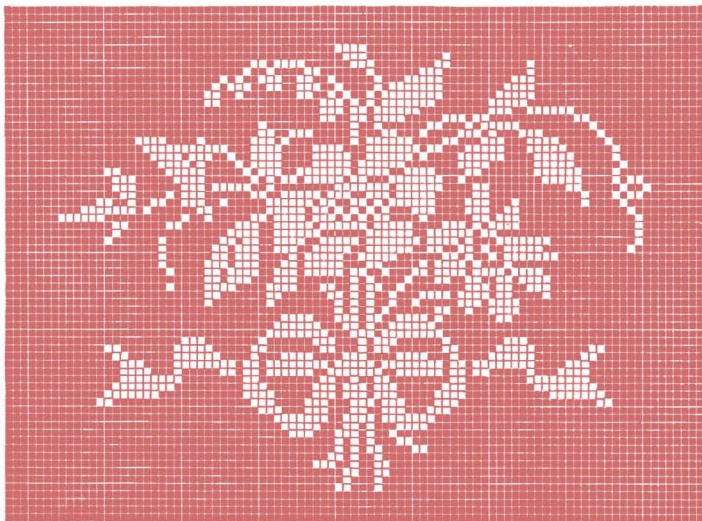
4th, 5th, 6th and 7th Rows—Each 2 sp.

Repeat from \*.

Finish each point with a tassel.



PLATES 51 AND 52



# Library Table Runner



PLATE 53

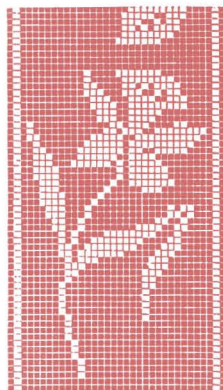


PLATE 54—INSERTION FOR END OF TABLE RUNNER

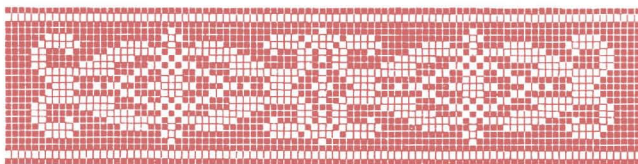


PLATE 55 INSERTION FOR END OF TABLE RUNNER

## TEA WAGON OR TEA TRAY TOP



PLATE 56—WORKING PATTERN FOR THIS TRAY SEE PLATE 69

## DIRECTIONS FOR TOP OF TEA WAGON OR TEA TRAY

MATERIALS—Coats Mercerized Crochet No. 100. Hook No. 14.  
Ch 492.

1st Row—163 sp.

2d Row—1 sp, 161 bl, 1 sp.

3d, 4th and 5th Rows—Each 1 sp, 1 bl, 159 sp, 1 bl, 1 sp. Commence and follow design.

If used for a Tea Tray, add edge as follows:

1st Row—3 sc in each sp all around.

2d Row—\* Ch 8, sc in 3d sp. Repeat from \*.

3d Row—\* 4 sc around ch, 1 p, 3 sc around same ch, 1 p, 4 sc around same ch, sc in sc of last row. Repeat from \*.

# Working Patterns

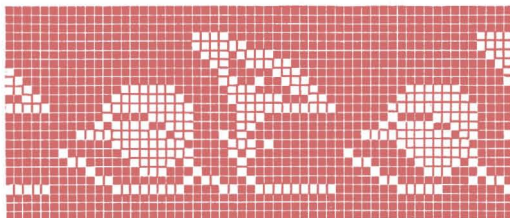


PLATE 57—WORKING PATTERN FOR INVALID'S JACKET

## DIRECTIONS FOR INVALID'S JACKET

**MATERIALS**—Coats Mercerized Crochet No. 5. No. 7 Hook.

First make insertion through center.

Start at one end, working cross-wise.

Ch 77.

1st 4 Rows—Each 24 sp.

5th Row—Start design and follow over the pattern 5 times.

Work along each edge of insertion as follows:

Start in 1st sp, \* ch 9, skip 1 sp, 1 d in next sp. Repeat from \*.

2d Row—1 tr in ch 4, \* ch 1, 4 tr in next ch 4. Repeat from \*.

Repeat these 2 rows till there are 11 rows of blocks.

### EDGE ALONG BOTH SIDES

3 s st in ch 4, 1 p, 3 s st in same ch. Repeat.

### CUFFS

Ch 36, work up and down.

1st Row—35 s st.

2d Row—35 s st, taking up back loop only, each 2 rows make one ridge.

Continue until there are 40 ridges.

Edge around cuff the same as edge along sides.

## DIRECTIONS FOR BOUDOIR CAP

**MATERIALS**—Coats Mercerized Crochet No. 70, 4 balls. ½ yard silk, ¼ yard net, 1 yard ribbon, ¼ yard elastic. No. 14 Hook.

Start at back, working cross-wise.

Ch 60.

1st Row—19 bl.

2d Row—Add 7 bl at each end, 7 bl, 19 sp, 7 bl.

Add bl at each end as shown in design. On the 36th row start design and follow.

### EDGE AROUND NET FRILL

Start in edge of net, \* ch 5, 1 d tr in 4th mesh of net, 1 p, 1 d tr in 4th mesh of net, 1 p, ch 5, 1 sl st in 4th mesh of net. Repeat from \*.



PLATE 58—WORKING PATTERN FOR BOUDOIR CAP TO MATCH INVALID'S JACKET

# Pretty Things to Wear

INVALID'S JACKET AND CAP TO MATCH



PLATE 59

### DIRECTIONS FOR GOWN YOKE

**MATERIALS**—Coats Mercerized Crochet No. 70. No. 10 Hook.  
Start at left hand side of front scallop, working cross-wise over the shoulder.

Ch 87.  
1st Row—1 bl, 7 sp, 1 bl, 5 sp, 2 bl, 4 sp, 3 bl, 2 sp, 3 bl, 2 bl, 5 sp, 2 bl, 9 sp, 1 bl.  
2d Row—Add 1 bl at first edge, 3 bl, 3 sp, 1 bl, 2 sp, 1 bl, 4 sp, 1 bl, 5 sp, 2 bl, 9 sp, 1 bl.  
Follow design, adding bl at lower edge to form scallop. Make 4 scallops and break cotton, start along the side of last scallop, make 4 scallops like the first side. Break cotton and start along side of last scallop, making 4 scallops, break cotton, start along side of last scallop, making 4 scallops. Join side of last scallop to the first end made. This will form a square. Set in gown corner-wise, so there is a point in front, back and on each shoulder.

### BEADING AND EDGE AROUND NECK AND SLEEVES.

1st Row—Bl all around.  
2d Row—Start in corner, ch 12, \* 2 tr tr in 2d bl, ch 4, 1 tr in 2d bl, ch 4. Repeat from \*.  
3d Row—4 s st in each ch 4 all around.  
4th Row—Start over ch 4, \* ch 12, 1 sl st in 3d ch 4. Repeat from \*.  
5th Row—3 s st in ch 12, 1 p, 3 s st in same ch, 1 p, 3 s st in same ch, 1 p, 3 s st in same ch, 1 sl st in sl st. Repeat all around.

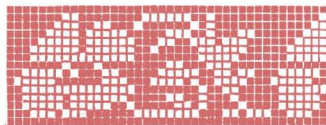


PLATE 61—WORKING PATTERN FOR INSERTION FOR BOUDOIR CAP

BOUDOIR CAP TO MATCH GOWN ON COVER



PLATE 60

### DIRECTIONS FOR BOUDOIR CAP INSERTION ON CROWN TO MATCH POPPY SET

**MATERIALS**—Coats Mercerized Crochet No. 70. No. 14 Hook.  
Medallion on side.  
Ch 32.  
1st Row—9 bl.  
2d Row—Add 3 bl at each end, 3 bl, 9 sp, 3 bl.  
Continue adding blocks at each end and follow design.

### EDGE AROUND MEDALLION

Start in bl, ch 8, catch with s st in 4th st of ch, ch 4, 1 s st in same bl, repeat 4 times in same bl, repeat in every bl the same as in first one.

### INSERTION IN CENTER OF CROWN

Start at one end, working cross-wise.  
Ch 54.  
1st Row—1 bl, 9 sp, 1 bl, 5 sp, 1 bl.  
Follow design until the stripe is 18 inches long

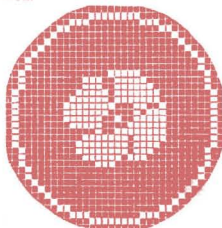
### CROWN ON EACH EDGE OF INSERTION

Start at one end of insertion, \* ch 7, 1 s st in 3d bl. Repeat from \*.  
2d Row—Ch 7, 1 s st in center of ch on last row, ch 7, 1 s st in center of next ch. Repeat all around.  
Continue until the crown is 18 inches across, dropping off on each end to make a circle.

### EDGE ACROSS FRONT

Like the edge on medallion.

PLATE 62—WORKING PATTERN FOR BOUDOIR CAP MEDALLION



# Poppy Bed Room Articles to match Gown on Cover



PLATE 63 GUEST TOWEL

## DIRECTIONS FOR GUEST TOWEL

MATERIALS—Coats Mercerized Crochet No. 100. No. 14 Hook.

Commence at one end, working cross-wise.

Ch 56.

1st 7 Rows—Each 17 sp.

8th Row—Commence design and follow.



PLATE 64 SHEET

## DIRECTIONS FOR INSERTION "SWEET SLEEP"

MATERIALS—Coats Mercerized Crochet No. 60. No. 14 Hook.

Commence at one end, working cross-wise.

Ch 56.

1st 10 Rows—Each 17 sp.

11th Row—Commence design and follow.

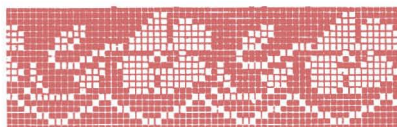


PLATE 65 EDGE FOR PILLOW SLIPS

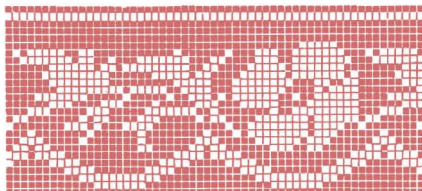
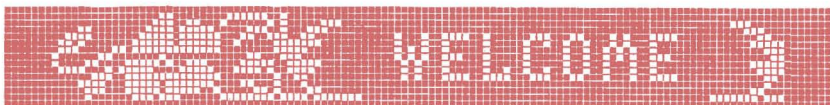
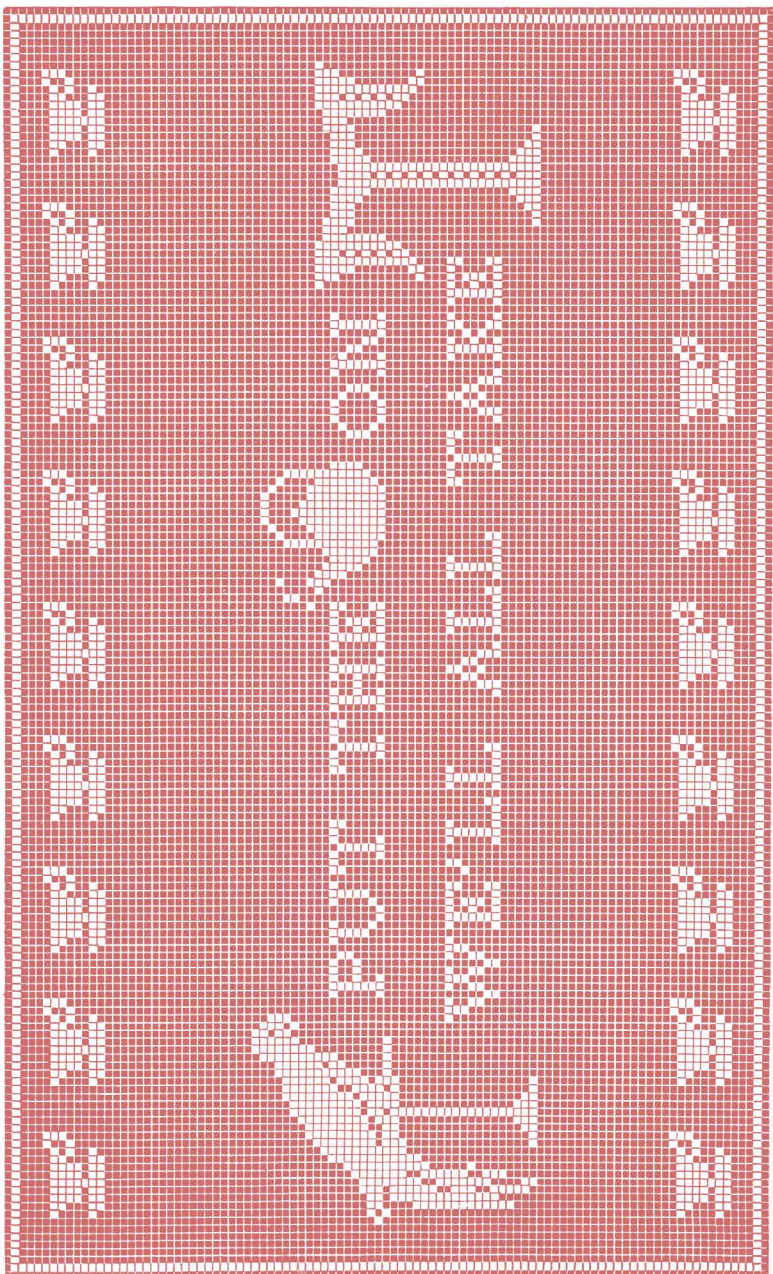


PLATE 66—EDGE FOR DRESSER SCARF AND CURTAINS



PLATES 67 AND 68





WORKING PATTERN FOR TEA-WAGON TOP

PLATE 69

## Jonquil Pointed Yoke



### DIRECTIONS FOR JONQUIL EDGE YOKE

**MATERIALS**—Coats Mercerized Crochet No. 50. No. 13 Hook. 7 meshes to the inch.

Start under arm, working up and down.

Ch 69.

**1st Row**—2 bl, 19 sp, 1 bl.

**2nd Row**—1 bl, 19 sp, ch 5, skip the 2 bl on upper end to form the beading.

**3rd Row**—2 bl, 19 sp, 1 bl.

**4th Row**—Add 1 bl at lower edge and on the next 8

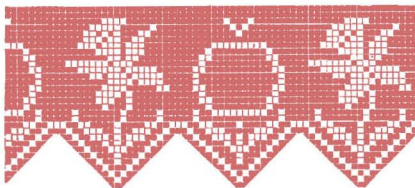
rows add 1 bl on each row to form point, following design, 1 point having a flower and the next point filled in with lacet stitches as shown in design.

12 points will make it 38 inches.

### EDGE AROUND NECK.

Start in sp,\* ch 3, 3 d tr in next sp, 1 p, 3 d tr in same sp, ch 3, 1 sl st in next sp.

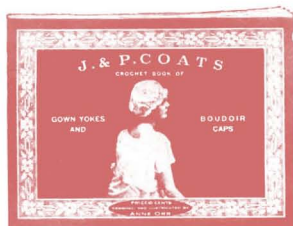
Repeat from\*.



WORKING PATTERN FOR JONQUIL EDGE YOKE

# J. & P. COATS PATTERN BOOKS

SIZE OF BOOKS, 7½X10½ INCHES

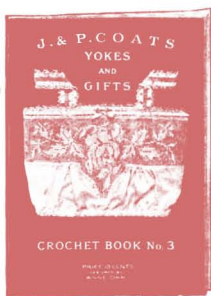


In J. & P. Coats Crochet Book of Gown Yokes and Boudoir Caps, the designs are original and unusually attractive, and the majority of them are presented in full page illustrations.

A special feature is the brevity and accuracy of the working directions.

J. & P. Coats Crochet Book No. 2 contains more than fifty illustrations, fully describing many beautiful examples of crochet.

The simplicity of the designs renders them available to the novice yet interesting to the expert worker.



J. & P. Coats Crochet Book No. 3 contains an excellent selection of designs that will strongly appeal to all lovers of the art of crochet who admire delicate lace effects. There are several full page illustrations, which may be easily followed by the beginner.

If you desire to have copies of these books and cannot obtain them from a dealer, send ten cents for each in cash or stamps to  
The Spool Cotton Company, Dept. A, 315 Fourth Avenue, New York



