

Antique Pattern Library

For more information, please see our website at: <http://www.antiquepatternlibrary.org>

This is a scan of an antique book that is, to the best of our knowledge, in the public domain. The scan itself has been edited for readability, and is licensed under the **Creative Commons** Attribution-NonCommercial-ShareAlike License. To view a copy of this license, visit <http://creativecommons.org/licenses/by-nc-sa/2.5/> or send a letter to Creative Commons, 559 Nathan Abbott Way, Stanford, California 94305, USA.

You may share copies or printouts of this scan freely. You may not sell copies or printouts.

Antique Pattern Library is a project of New Media Arts, Inc. <http://www.newmediaarts.org>, a nonprofit organization tax exempt under IRC 501(c)(3). Donations may be tax deductible, depending on your tax status and tax jurisdiction.

Donated by

Anna Mendenhall

CLARK'S



BOOK OF

CROCHET PATTERNS

Nº 3

CENTERPIECES — LUNCHEON SETS
DINING ROOM NOVELTIES

DESIGNED BY ANNE ORR

PRICE 10 CENTS



COPYRIGHTED 1917
BY
THE CLARK THREAD COMPANY
NEWARK, NEW JERSEY

Clark's O. N. T. Book of Crochet Patterns No. 3.

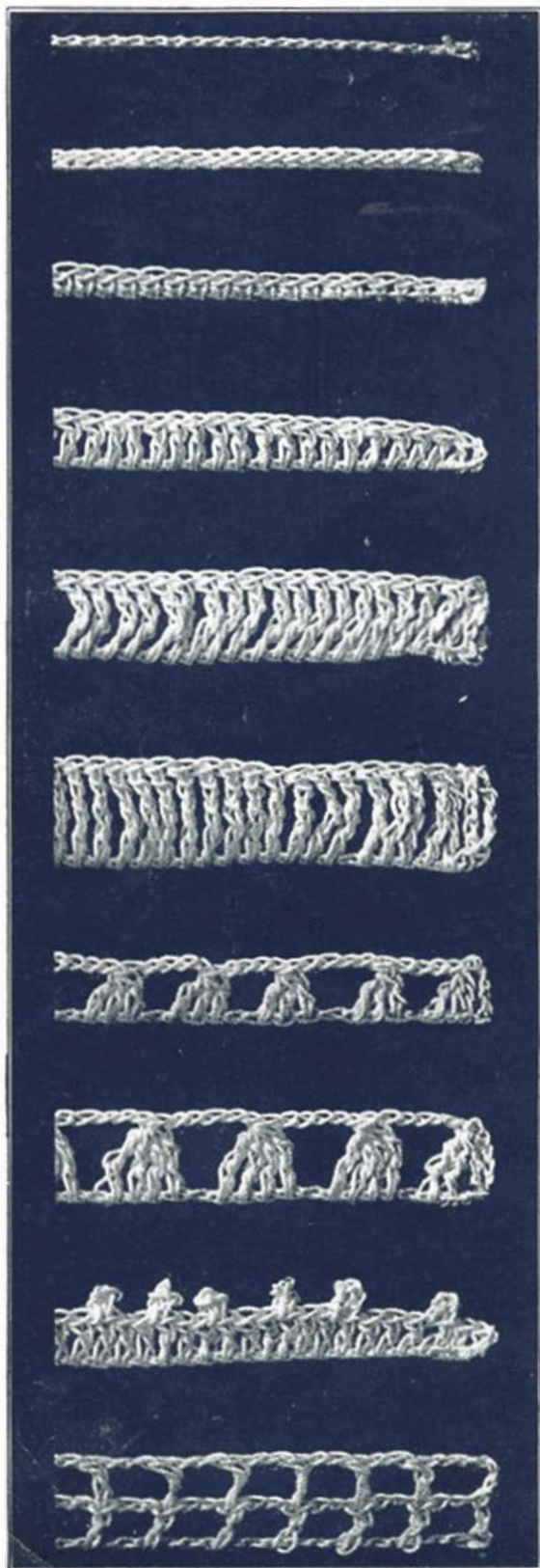
For the average woman of the home there is nowadays no more pleasant and profitable pastime than the art of crocheting.

This book of new designs of centerpieces, doilies and dining room novelties is published with the hope that the reproduction of these numerous attractive articles with **CLARK'S O. N. T. MERCERIZED CROCHET COTTON** will bring to the novice and to the experienced needle-worker alike much happiness and satisfaction.

TABLE OF CONTENTS

	PAGE		PAGE
Alphabet.....	30	Luncheon Centerpiece.....	19
Bon Bon Dish.....	7	Napkins.....	9
Border Designs.....	24	Nut Basket.....	7
Candlestick.....	7	Pansy Centerpiece.....	27
Chair Tidy.....	23	Rose Doilies.....	20
Corner Designs.....	8	Shell Centerpiece.....	21
Daisy Borders.....	17	Side Board Set.....	25
Edgings.....	6	Square Doilies.....	22
Fruit Bowl Centerpiece.....	14	Star Doilies.....	16
Fruit Bowl Luncheon Set.....	12	Star Plate Doilies.....	17
Grape and Leaf Centerpiece.....	15	Stitches.....	4-5
Hot Rolls Napkin.....	26	Tulip Design.....	23
Jonquil Border.....	16	Vase.....	7
Luncheon Cloth, on Cover.....	10	Virginia Creeper Lunch Cloth.....	11
Luncheon Cloth, on page 11.....	10	Window Shade Edging.....	25
Luncheon Doilies.....	18	Working Designs for Doilies.....	13
		CLARK'S O. N. T. COTTONS.....	28
		MILWARD'S NEEDLES.....	29

Crochet Stitches and Their Abbreviations



1. **CHAIN STITCH (ch)**—Is the foundation of all crochet work. Begin by twisting the thread around the needle once, to form a loop, then * throw the thread around the needle and draw through the loop. This forms one chain and is repeated from * for the count or length desired.

2. **SLIP STITCH (sl st)**—Is most frequently used to join rows, or to slip invisibly from one part of the work to another. Having one loop on the needle, insert the needle in the stitch directed, draw the working thread through this stitch and the loop on the needle with one motion thus making a flat, close stitch.

3. **SINGLE STITCH (s st)**—Having one loop on the needle, insert the needle in the stitch directed, draw the working thread through this stitch, making two on the needle, then draw the working thread through these two loops.

4. **TREBLE CROCHET (tr)**—Having one loop on the needle, throw thread around the needle, insert the needle in the stitch directed, draw working thread through this stitch, making three loops on needle, draw working thread through two loops and then through the remaining two loops. Three chains equal one treble in measure and in count.

5. **DOUBLE TREBLE CROCHET (d tr)**—Is made similarly to the treble, the difference being that the thread is thrown around the needle twice and the loops are worked off two at a time for three repeats.

6. **TRIPLE TREBLE CROCHET (tr tr)**—Has the thread thrown around the needle three times and the loops are worked off two at a time for four repeats.

7. **HALF TREBLE CROCHET (h tr)**—Is sometimes called "group stitch." Having a loop on the needle, throw thread over, insert needle in stitch directed, draw working thread through, draw through two loops, leaving two loops on needle, * thread over, needle in next stitch, draw thread through, draw through two loops, leaving three loops on needle, repeat from *, leaving four loops on needle, then draw thread through all four loops.

8. **HALF DOUBLE TREBLE (h d tr)**—Is made in the same manner, leaving the last operation of each double treble until the required number have been made and then taking off all the stitches at once.

9. **PICOTS (p)**—Are usually made by a chain of three or five, then a slip stitch in the first chain. When there is a variation of the above, it is specifically given in the directions.

10. **SPACES (sp)**—Are the open meshes of filet crochet. To form a space, make one treble, then chain two, skip two stitches of previous row and make another treble. This should result in a perfect square but perfection requires persistent practice as well as the correct sizes of needle and thread. For a space at the beginning of a row, chain five, which allows three for the treble on the edge, two for the usual chain, also two at top of space.

Crochet Stitches and Their Abbreviations

11. **BLOCKS (bl)**—Are formed by working trebles in adjoining stitches for the required number. Where blocks are consecutive there are four trebles in the first block and three trebles in each following block. Therefore, to find the number of trebles in a row of blocks, multiply the number of blocks by three and add one; in two blocks there are seven trebles, in three blocks, ten trebles, etc.

12. **BLOCKS AND SPACES**—This illustration clearly shows the alternation of blocks and spaces in filet crochet. Counting from right to left, as the work is made, there are one block, two spaces, three blocks, one space. The next series of blocks is cut off. This would read in directions, 1 bl, 2 sp, 3 bl, 1 sp.

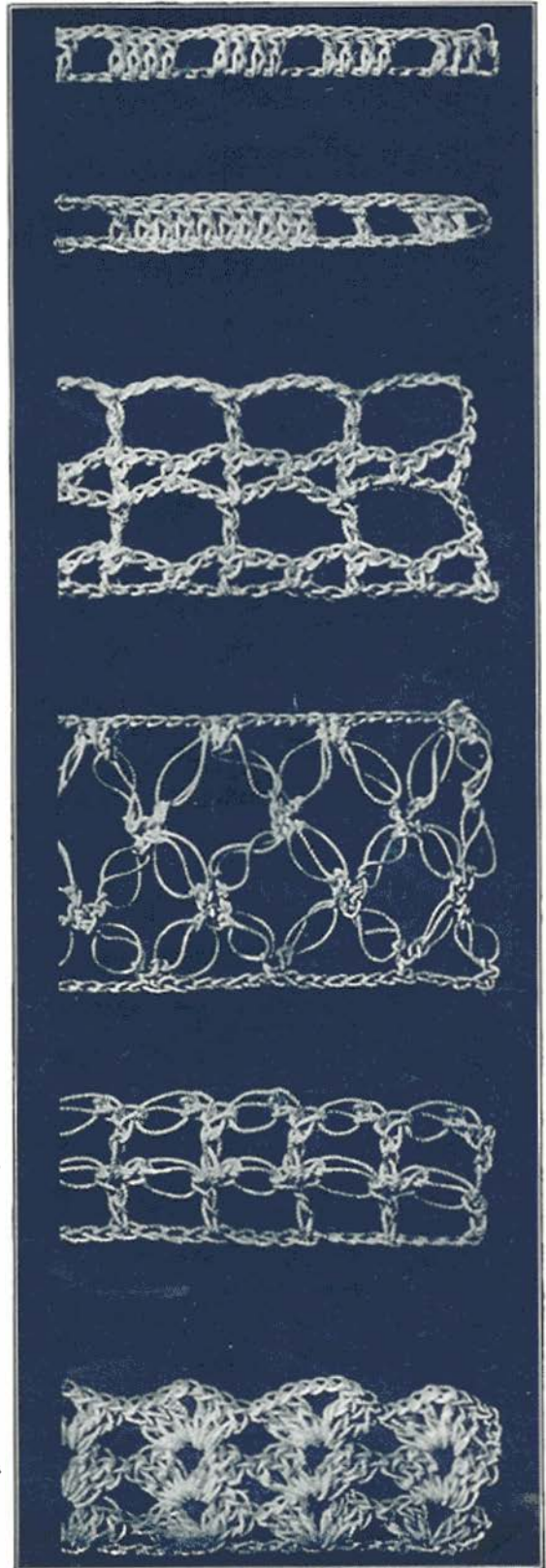
13. **LACET STITCH**—Make a foundation chain. 1st Row—Allow three chains for edge treble, two for two chains and two more for two skipped stitches, work a single stitch in the next chain, * ch 2, skip 2, tr in next, ch 2, sk 2, s st in next. Repeat from * for row.

2d Row—Ch 3 for edge tr, ch 5 more, then tr in tr. * ch 5, tr in tr. Repeat from * for row. Repeat these two rows for the pattern.

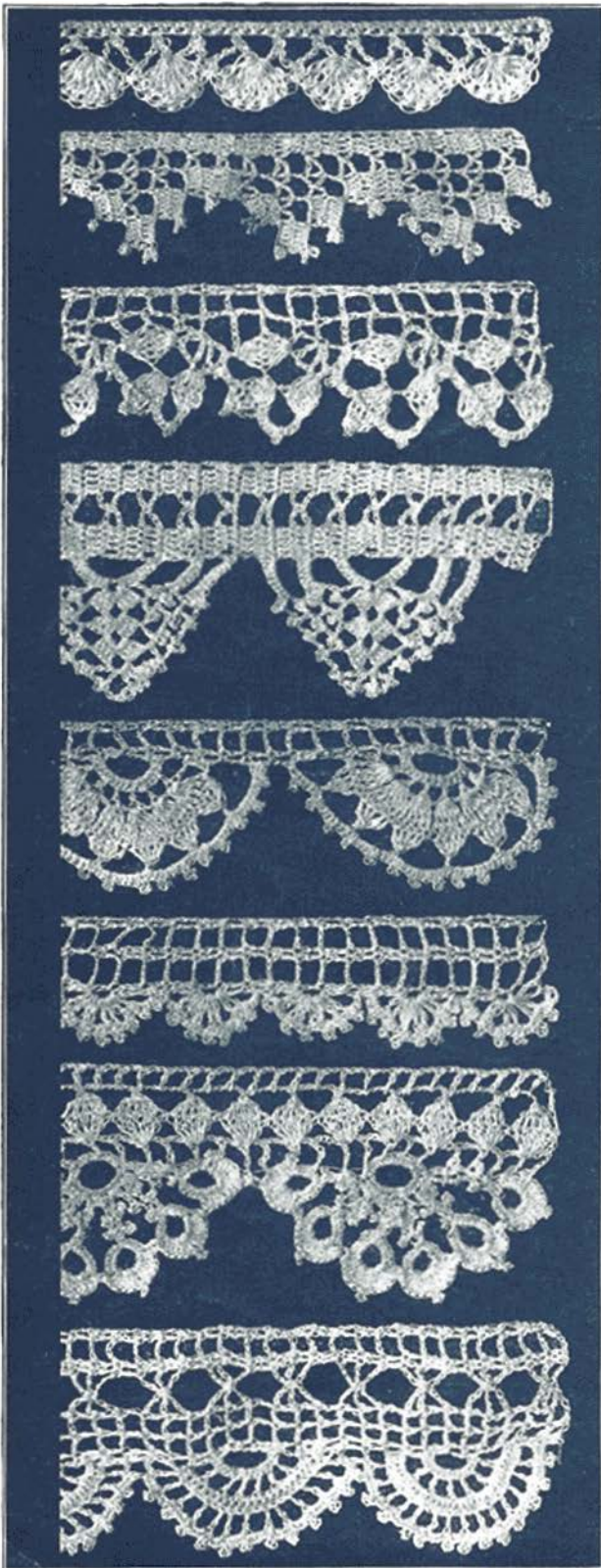
14. **KNOT STITCH (k st)**—Variously known as Hail Stone or True Lovers' Knot, is made thus: Having one loop on the needle, draw it out to the length of 3 ch, thread over the needle and draw through, making an ordinary chain stitch, drawn out to three times its normal length. Then put the needle under that one of the 3 threads of the long loop which seems to lie by itself, draw the thread through and make a single stitch. This is the knot stitch. It is usually worked by making two, then fastening to the previous row by a single stitch unless the row was knot stitch, in which case, work one single stitch each side of the single stitch between the two long loops or knot stitches.

15. **LATTICE STITCH (lat st)**—Is combination of single knot stitches and trebles. Work a chain, then make one knot stitch, allow three chains for the first treble, and three for the skipped stitches, work a tr in next ch, * one knot stitch, sk 3 ch, 1 tr. Repeat for length desired. This row is repeated for the pattern, working the tr in tr, each time, bringing the knot stitches over each other.

16. **SHELL (sh)**—May be worked with tr, d tr, or longer, stitches. They are made up of a given number of stitches on each half, separated by a given number of chain stitches. When worked on a foundation chain, a given number of stitches are skipped. When worked over another row of shells, each one is placed in the chain between the halves of the previous shell, or between two shells. In the illustration, the directions would be as follows: Having a chain, allow 3 for the first tr, two tr in 4th chain from needle, ch 2, 3 tr in same chain as last tr, * skip 5 ch, in 6th ch work, 3 tr, 2 ch, and 3 tr. Repeat from * across row. Ch 3 and turn at end of row. Second and all other rows, shell in shell.



A Group of Edgings



DIRECTIONS

- EDGING No. 17**—Make a chain the length desired. Work a s st in each chain. **2d Row**—Ch 5, sk 2 sts, s st in next st, repeat. **3d Row**—* S st in 3d of 5 ch in 2d row. In 3d ch of next 5 ch work 8 tr. Repeat from *.
- EDGING No. 18**—Ch 20, turn. **1st Row**—S at in 6th st from needle, ch 5, s st in same at (this ch 5 and s st, repeated twice will be called double picot, d p, from now on). The count for first 5 ch will not be included at end of 2d and 4th rows. * Ch 3 (for tr), 5 tr in next 5 ch, ch 2, sk 2, s st in next ch, ch 2, tr in each of next 4 ch, ch 3, turn. **3d Row**—Tr in each of next 3 sts, ch 5, tr in each of next 6 tr, ch 6, turn, d p. **4th Row**—Ch 3, tr in each of next 5 ch, * ch 2, s st in 3d st, ch 2, tr over last tr (a lacet), repeat for 2 lacs (lacs), tr in each of next 3 tr, ch 3, turn. **4th Row**—Tr in each of next 3 tr, * ch 5, tr over tr, repeat from * once, tr in each of next 6 tr, ch 6, turn d p. **5th Row**—Like 3d row, making 3 lacs. **6th Row**—Like 4th row, making 3 lacs, and ending row with 6 tr. Then turn and work d p on the corner at (top of 6th tr), st st to last tr, ch 3. **7th Row**—Like 3d, working 3 of the first 6 tr over the 5 ch. **8th Row**—Like 4th, omitting the final ch, and working the d p as in 6th row, then st to last tr. **9th Row**—Like 7th, making one lacet. **10th Row**—Like 2d row, omitting the 6 ch and working the d p at top of 6th tr. Repeat from *.
- EDGING No. 19**—Ch 11. **1st Row**—Allow 3 ch for 1 tr, tr in 4th ch, ch 3, tr in 4th ch, skip 2 ch, in next ch work 1 tr, * ch 2, tr, repeat from * twice, ch 3, turn. **2d Row**—In 1st ch work 4 tr, ch 2, sk 1 tr and in next tr work 5 tr, ch 2, tr over next 2d tr, ch 3, 2 tr for edge, ch 3, turn. **3d Row**—Tr over tr, ch 3, tr over next tr, ch 5, work (a group) 1 tr in each of 5 tr, holding 1 loop from each tr on needle until there are 6 loops on needle. Draw thread through all loops, ch 5, 5 tr in 2d of ch 2 of last row, ch 5, a group over next 5 tr, turn. **4th Row**—Over ch work, 3 s st, p, 3 s st; s st over 1st tr, ch 3, a group of 3 tr over next 3 tr, ch 3, s st in last tr, over ch work as before, s st in top of group, ch 5, tr over tr. Finish like 2d row. Repeat pattern, fastening at end of 1st row, in the top of 5th row.
- EDGING No. 20**—Ch 17, sk 3 ch, tr in each of next 4 sts, ch 5, sk 5, tr in each of next 5 st, ch 3, turn. **2d Row**—Tr in each of next 4 sts, ch 2, s st over ch, ch 2, tr in each of next 5 sts, ch 3, turn. These two rows are repeated for the insertion part and will not be given again. They are to be worked at the beginning of all uneven rows, and at the end of all even rows. **9th Row**—After completing the insertion part, begin the first scallop. Ch 9 and fasten with st between the 5th and 6th rows, ch 1, turn. **10th Row**—8 s st, ch 3, 8 s st, ch 1, insertion. **11th Row**—Insertion, ch 7, tr in 6th s st, p, ch 2, over next ch 3 work a shell of 4 tr, 3 ch, 4 tr, then ch 2, tr in 2d s st, p over tr, ch 7, fasten between 3d and 4th rows, ch 1, turn. **12th Row**—8 s st over ch, p, ch 2, tr over ch 2 of previous row, p, ch 2, shell in shell, ch 2, tr over next ch, p, ch 2, tr over ch, p, 8 s st over ch, insertion. **13th Row**—Insertion. Like 11th row, making 1 more of the ch 2, tr and p. Fasten the row between the 1st and 2d rows of insertion. **14th Row**—Like the 12th row, increasing as in 12th row, and making the shell as follows: 4 tr, with p, ch 2, between trs. Then make 9 rows of insertion before beginning second scallop.
- EDGING No. 21**—Ch 9. The first 6 rows are alike—2 tr, ch 3, 2 tr (the first tr in each row being 3 ch). At the end of the 6th row, start the scallop—Ch 7, fasten between 4th and 5th rows, turn and work 13 s st over the 7 ch, insertion as in all rows. **8th Row**—Insertion. Instead of last tr here, there is a ch 3, fastened in base of preceding tr, then ch 2, * tr in 2d st at top, repeat 5 times and fasten between 3d and 4th rows, ch 4 and fasten at top of 1st row. Ch 1, turn. **9th Row**—3 d tr in each tr of previous row, insertion. **10th Row**—Insertion, * ch 5, group of 5 tr over 5 tr of preceding row (see Edging No. 20 for description of group), repeat 5 times, ch 5 and fasten at base of 1st row, turn. **11th Row**—Over each ch work p, 3 s st, insertion. **22** Make the insertion for 8 rows before beginning second scallop.
- EDGING No. 22**—Ch 14. The insertion part is 2 tr, * ch 3, sk 3, 2 tr, repeat from * once, ch 3, turn. At the end of the 4th row, the scallop is started by working over the outer tr of the 2d row, * 2 ch, 2 tr, repeat twice, then ch 2, s st at base of tr of 1st row, ch 3, turn. * p (the 3 ch just made), 2 s st, repeat 6 times, then make 4 rows of insertion and so continue.
- EDGING No. 23**—Commence at center of scallop with a ch of 10, join in ring. Over this work 28 s st. * (ch 2, p, ch 2, p, ch 7, join without turning, by a st in 5th ch from needle, over this ring work, still without turning, 6 s st, p, 6 tr, 1, 6 tr, p, 6 s st, then a s st over the ch between ring and next p, s st at p of opposite side, ch 2, p, ch 2, 2 s st over 2 sts on ring, repeat from * 5 times, joining the p that are made between the s st and trs. The thread may be broken and the second scallop made like the first one, or the ball may be passed through the loop to close the chain and a length equal to the width of the entire scallop left and then the chain for 2d ring started. Join the first and last repeats of scallops by the p between the 2 groups of 6 tr. When the desired length of scallops has been made, work across the top edge as follows: **1st Row**—Join in side p of end repeat, ch 8 (for a d tr and 3 ch), d tr in last s st in ring, ch 3, d tr between p of stem, ch 3, d tr where stem joins first ring, ch 3, tr in side of ring, reverse the above for the other half of scallop and then repeat for each scallop, making a tr tr where scallops join. **3d Row**—5 tr in every second tr. **3d Row**—3 tr over each 5 tr, with 6 ch between. **4th Row**—All spaces, that is, ch 2, sk 2, 1 tr.
- EDGING No. 24**—Ch 23, sk 3, tr in 4th ch, ch 2, sk 2 ch, tr in each of next 2, ch 7, sk 7 ch, tr in next ch, sk 2, ch 2, tr in next ch, sk 2, ch 2, tr in each of next 2 ch, ch 3, turn. The second row is the reverse of the 1st, that is, tr over tr, and ch over ch. **3d Row**—Is like the 1st except that instead of 7 ch, make 3 ch, s st over 7 ch of 1st and 2d rows, ch 3. These three rows are repeated for the insertion. The scallop is started at the end of the 7th row. Ch 5, s st in tr of 5th row, ch 1, turn. **8th Row**—13 s st over the 5 ch, insertion. **9th Row**—Insertion, * ch 2, tr in 2d s st, repeat 6 times, ch 2, s st in tr of 3d row, ch 1, turn. **10th Row**—3 s st over each ch, s st over each tr, insertion. **11th Row**—Insertion, s st over s st, taking up back thread of each st, 3 s st along side of insertion, ch 2, turn. **12th Row**—* 7 tr in 2d st, ch 2, repeat around scallop, and continue for length desired. The edge is worked last. 3 s st over ch, p over tr, for length.

Four Pieces for Table Decoration

DIRECTIONS FOR VASE

MATERIALS—Clark's O. N. T. Mercerized Crochet Cotton, No. 3, O. N. T. Crochet Needle No. 3. 1½ yards of ribbon, 2 inches wide. Height of basket is 24 inches.

1st Row—Ch 6, join. In the ring make 12 d tr, join. **2d and 3d Rows**—D tr in d tr, with 2 ch between. **4th Row**—Sl st to first sp, ch 5, ° d tr in next sp, ch 2, d tr in same space. Repeat around, join. **5th Row**—Sh in ch of preceding row, repeat around, join. **6th and 7th Rows**—Like 5th. **8th Row**—Like last, except 3 ch in sh and 1 ch between shs. **9th Row**—From ch of sh, ch 3 for 1st tr, 1 tr, ch 2, 2 tr in same sp, ch 3, s st in sp between shs, repeat around, join. **10th and 11th Rows**—Like 9th, only increase ch by 2 each row (5 ch in 10th row, 7 ch in 11th row). There should be 12 points. **12th Row**—Ch 7, ° 1 d tr, p, repeat 4 times more all in top of sh, ch 7, s st in s st, repeat around, join.

BOTTOM OF VASE—**1st Row**—Fasten in sp, ch 3, sh of trs in next sp with 1 ch in sh, ch 3, s sc in next sp, repeat around; should be six shells. **2d, 3d and 4th Rows**—Like 1st, except 2 ch in shs, and chs between increased 2 every time; finish points like top.

HANDLE—In the center of one point, make a sh of trs, with 2 ch in top, ch 5, 1 sh into next point, turn, repeat until you have the desired length; join to opposite points of basket.

To stiffen vase, boil two cups of sugar and one of water, until it threads. Put basket in hot syrup; see that it is well covered. If too thick on basket, wipe off with clean cloth; when it begins to harden, shape.

Candlestick

Ch 10, join. **1st Row**—2½ tr in ring, with 1 ch between trs, join. **2d Row**—Ch 6, d tr in next sp, repeat around, join. **3d Row**—° tr, lat st, ° repeat around, join. **4th Row**—Like 3d. **5th Row**—Ch 5, sl st into tr of preceding row, repeat around, join. **6th Row**—Sl st to center of ch, sh of 3 tr, 3 ch, 3 tr, in the same sp, repeat around. **7th Row**—Sl st to middle of sp, ch 3, s st in next sp, p, tr, p, d tr, p, d tr, p, tr, p, s st, ch 3, sl st in next sp, repeat around. Fasten thread to top of 2d row at the bottom of basket. Make a row of 14 h tr, around, join. Three rows of lattice st around, a row of ch loops of 5 ch, join. Sh row like the edge.

FOR THE HANDLE—Ch 15, s st in 8th st from needle. Ch 1, fill with s st, then cover remaining ch with s st. Sew to base of candlestick.

Small Basket

Ch 10, join. **1st Row**—In the ring make 20 d tr, 1 ch between st, join. **2d Row**—A row of 20 lat sts, with d tr on each d tr, join. **3d Row**—A row of 20 h tr, with lat st between groups. **4th Row**—A row of 8 ch loops, all around, join. **5th Row**—Like 4th row. **6th Row**—° 3 tr, lat st, ° repeat all around. **7th Row**—A row of loops of 6 ch, all around, join. **8th Row**—Sl st to middle of loop, tr, lat st, repeat around, join. **9th Row**—same, join. **10th Row**—Ch 6, s st into tr, repeat around, join. **11th Row**—A sl st to middle of ch loop, ch 3, tr, p, d tr, p, tr, p, tr, p, d tr, p, tr, p, ch 3, repeat 9 times. Bottom and Handle same as large basket.



PLATE 25
Vase of Lilies

Large Bon Bon Basket

MATERIALS—Clark's O. N. T. Mercerized Crochet Cotton.

Ch 10, join. **1st Row**—Ch 5, 24 d tr in ring with 2 ch between d trs. **2d Row**—Ch 8, 24 d tr, with 3 ch between. **3d Row**—H tr in each space, 3 ch between h tr (see pages of stitches). **4th Row**—Tr over each h tr, lattice stitch between. **5th Row**—Same. **6th Row**—H tr over lattice st, 7 ch between. **7th Row**—Ch 7, sl st into middle of ch of last row, ch 7, into next h tr, repeat all around. **8th and 9th Rows**—Ch 5, s st in ch of previous row, repeat around. **10th Row**—3d tr, over ch of preceding row, ch 1, repeat all around. **11th Row**—Ch 5, s st into ch, repeat all around. **12th Row**—Sl st to middle of ch, ch 3, lat st, trin next ch, repeat all around. **13th, 14th and 15th Rows**—Alternating lat st and tr, working tr in tr. **16th Row**—Ch 5, s st in tr, repeat around. **17th Row**—In each 5 ch, make a sh of 8 d tr with p between, fasten between shs with sl st. There will be 24 shells.

BOTTOM OF BASKET—Fasten thread to the 6th row. Make a ° htg, 1 long lattice st, ° and repeat all around. **2d Row**—Ch 8, s st into 1st htg, repeat around making 24 loops. **3d Row**—Into these loops, a row of sh like those around the top.

FOR THE HANDLE—Make a chain long enough to twist and double twice. Sew firmly to basket.



PLATES 26, 27 AND 28
Bon Bon, Nut Basket and Candlestick

Corner Designs and Their Uses

Plates 29 and 32 are for corner inserts.

Either square may be used for the Centerpiece, Plate 44, on page 12, by substituting it for Plate 43 and following the rest of the directions as given there. Napkins to match may be developed easily. With Plate 32 as a centerpiece insert, the medallion of hutterly on page 26 would make a most pleasing combination for napkins and other dining room pieces to match.

Plates 30, 31, 33 and 34 are for many purposes, but one of their uses is prettily illustrated on page 9.



PLATE 29

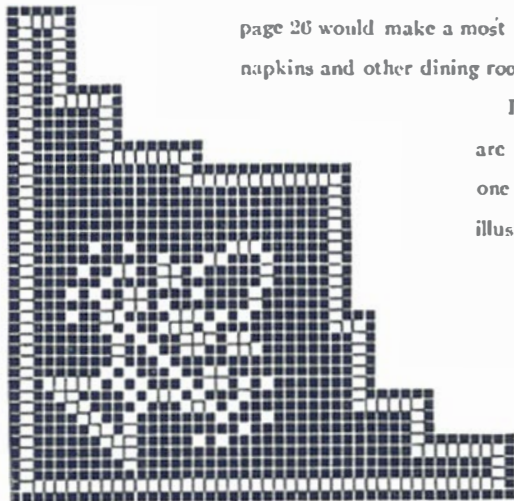


PLATE 30

This design is used for the napkin corner in Plate 35, page 9.

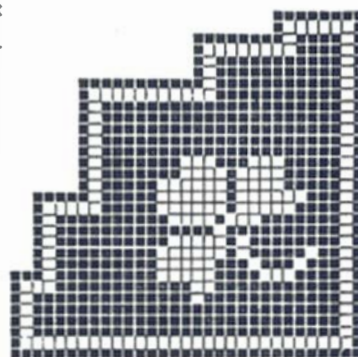


PLATE 31

This design is used for the napkin corner in Plate 36, page 9.

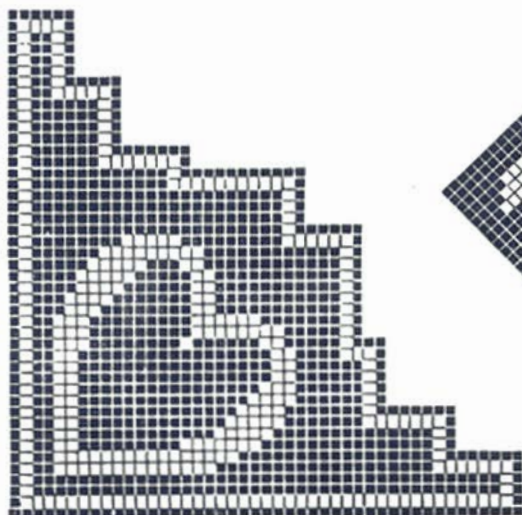


PLATE 33

In working Napkin 35 from Plate 33, omit the outer two rows and allow three rows of spaces outside the heart.

In working Napkin 37 from Plate 34, omit the outer two rows and allow two rows of spaces outside the wreath.

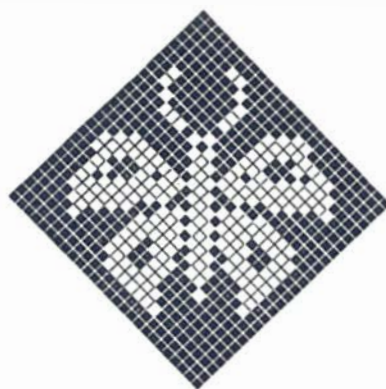


PLATE 32

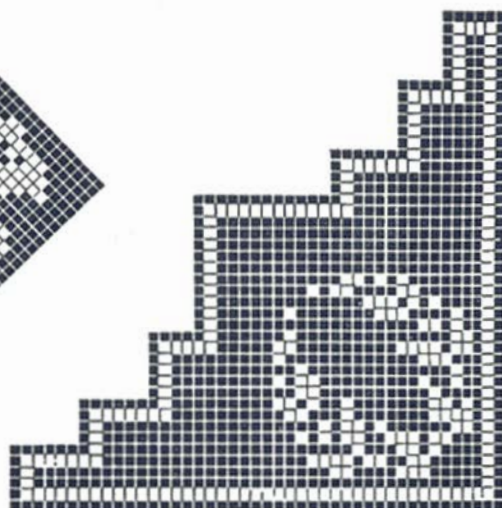


PLATE 34

Napkins

Working Designs found on page 8

DIRECTIONS

MATERIALS—Clark's O. N. T. Mercerized Crochet Cotton, white No. 60, and an O. N. T. Crochet Needle, No. 11. One ball of cotton will make several of the napkins. For the center, linen sheeting or damask may be purchased by the yard and cut into squares the desired size, from fifteen to twenty-two inches.

Finish the edges of the squares by rolling a dainty hem and covering with single stitches between the corners. These are hemmed to the linen with very fine stitches, rolling the edge of the linen underneath. By using 100 thread these make very dainty handkerchiefs.

DIRECTIONS FOR PLATE 35

Ch 131 and work 3 rows of 42 spaces in each row. 4th Row—3 sp, 14 bl, 19 sp, ch 5, turn. Follow Plate 33 on page 8, making changes as noted there.

FOR EDGE—Make a row of sp all around, widening one sp at the corner. 2d Row—* 2 s st over next sp, 1 s st in tr, repeat from * for 4 sp, in the 5th sp work 3 ch, 1 s st, repeating from last * twice, then ch 3, and repeat from beginning.

DIRECTIONS FOR PLATE 36

Ch 80 and work four rows of 28 spaces in each row. 5th Row—14 sp, 1 bl, 13 sp, ch 5, turn. 6th Row—12 sp, 2 bl, 12 sp, ch 5, turn. Follow Plate 31 on page 8, making changes as noted there.

FOR EDGE—Make a row of spaces all around. 2d Row—* 2 s st over next sp, 1 s st over tr. Repeat for 4 sp, ch 3, s st in same tr. Repeat from * all around.

DIRECTIONS FOR PLATE 37

Ch 128 and make two rows of 41 spaces in each row. 3d Row—28 sp, 2 bl, 4 sp, 3 bl, 6 sp, ch 5, turn. Follow Plate 34 on page 8, making changes as noted there.

FOR EDGE—Make a row of tatted rings as follows: 3 d, p, 3 d, p, 3 d, p, 3 d, and close ring. Sew invisibly to crochet.

DIRECTIONS FOR PLATE 38

Ch 128 and make two rows of 41 spaces in each row. 3d Row—31 sp, 1 bl, 9 sp, ch 5, turn. Follow Plate 30 on page 8, making changes as noted there.

FOR EDGE—In space at corner, work 4 tr, with 3 ch between, * ch 8, skip 2 sp, sl st into 3d. Repeat from * all around. 2d Row—In the first sp at corner, make 3 ch and 3 tr, make sl st in next sp, ch 3, 3 tr in same sp, * sl st over next 8 ch, ch 3, 3 tr in same sp, repeat from * all around.



PLATES 35 TO 38

Luncheon Cloth on Cover

DIRECTIONS

This cloth may be made in either of two sizes, square, by working the design as given on either side the corner for all four sides. One way gives a large cloth, the other would be more of a centerpiece or between meal cloth. The cloth would be appropriate for an oblong table if worked as shown on the cover. And if a large luncheon cloth is desired, the second design on this page on same plate is so arranged as to make a continuous border, by inserting this extra length, and then repeating side and corner of cover, as begun.

MATERIALS—Linen for the center Clark's O. N. T. Mercerized Crochet Cotton in any size desired for the crochet.

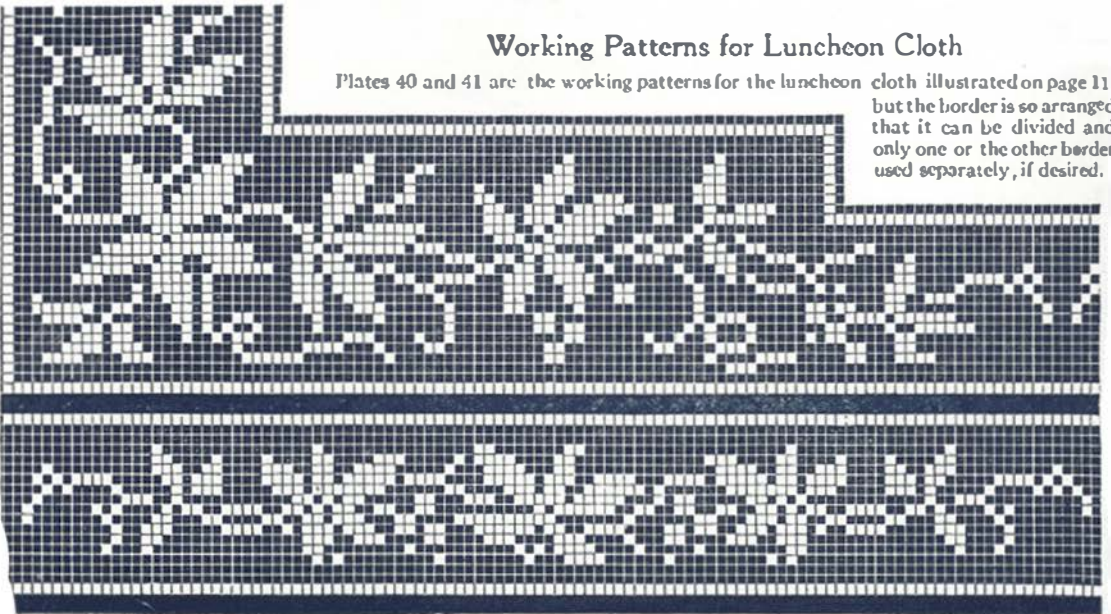
Chain 79, and work the design from the pattern shown on this page, making a block at each edge and starting the second side on the side of the first strip.



PLATE 39

Working Patterns for Luncheon Cloth

Plates 40 and 41 are the working patterns for the luncheon cloth illustrated on page 11, but the border is so arranged that it can be divided and only one or the other border used separately, if desired.



PLATES 40 AND 41

Virginia Creeper Luncheon Cloth

The design on page 10 is so arranged that it can be used for side board, buffet and tray covers to match this luncheon cloth, and the corner could be used for a napkin, by using a large leaf at corner and tendrils that connect with it as suggested at outside of design in plate 40 on page 10.

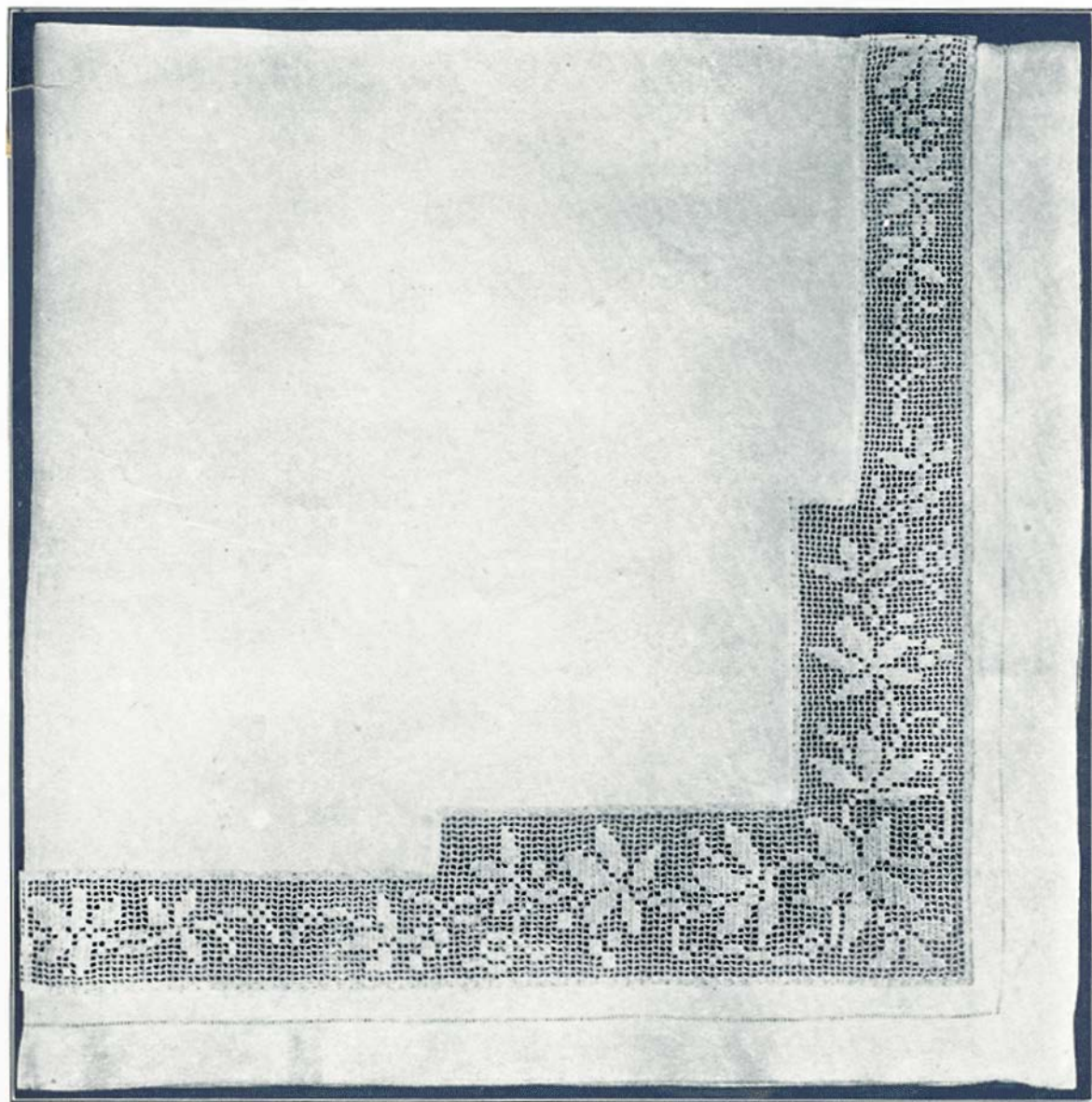


PLATE 42

DIRECTIONS

No. 32. MATERIALS—Linen, 60 in. square. Hemstitched $1\frac{1}{2}$ in. wide. Inset 1 inch or more from hem.
Clark's O. N. T. Mercerized Crochet Cotton. Crochet at sides—1 tr, 16 sp, 4 tr. Add 9 stitches for corners. The design to be followed is on page 10.

Napkin for Fruit Bowl Luncheon Set



PLATE 43

A Napkin 15 Inches Square to Match Centerpiece on page 14.

DIRECTIONS

MATERIALS—Clark's O. N. T. Mercerized Crochet Cotton, No. 70 and O. N. T. Crochet Needle No. 12.

Ch 132 and make 4 rows of 42 spaces each. Then 1 row of 32 sp. 6th Row—12 sp, 1 bl, 11 sp, 1 bl, 7 sp. Follow design, dropping spaces as shown. End with 10 rows of 4 sp each. Buttonhole to linen and then work a row of spaces all around napkin, finishing with a row of sts over the spaces.

Doilies for Fruit Bowl Luncheon Set

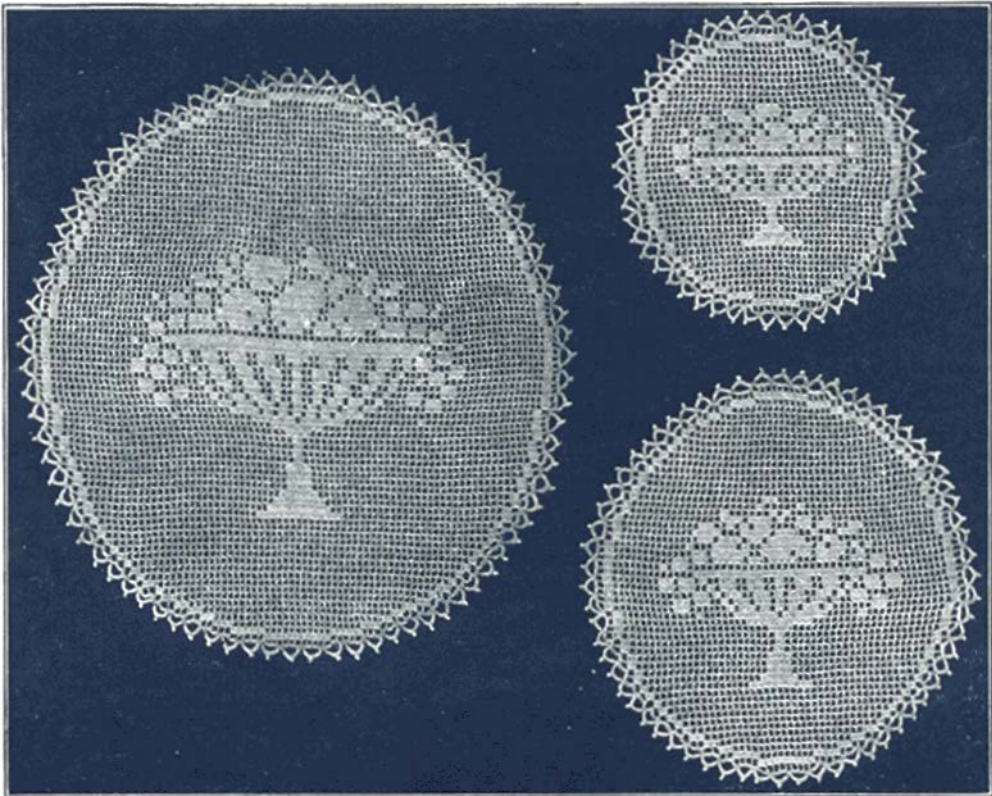


PLATE 44, Serving Plate Doily; 45, Glass Doily; 46, Bread Plate Doily

DIRECTIONS

These doilies are worked in the same method. Start at the lower edge of each and follow the design as given on page 13, widening or narrowing at both beginning and end of each row, as required.

FOR THE GLASS DOILY—Ch 25 and for the 1st Row work

7 blocks. 2d Row—Ch 14, turn and work 11 tr on the ch and 1 over the last tr of first row. This will count 13 with the 3 ch at start. Then make 7 spaces, then 12 d tr, putting each one near the base of last st made. This will widen at the end of the row. Continue for the pattern.

Working Designs for Doilies

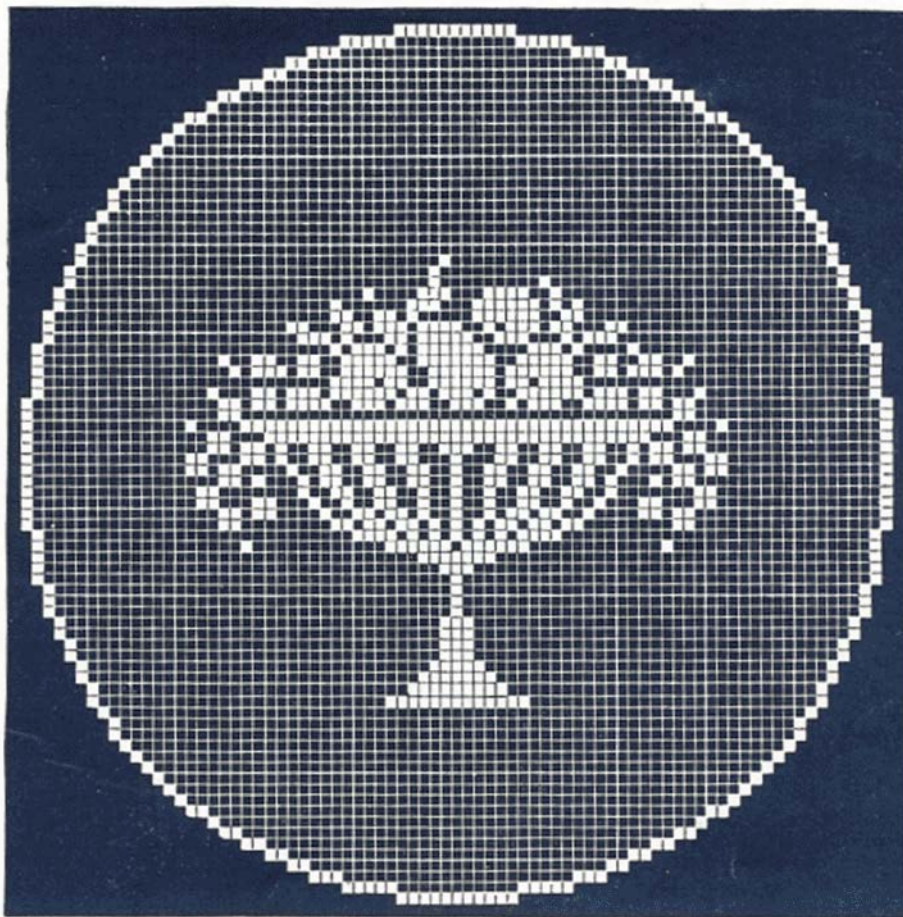


PLATE 47

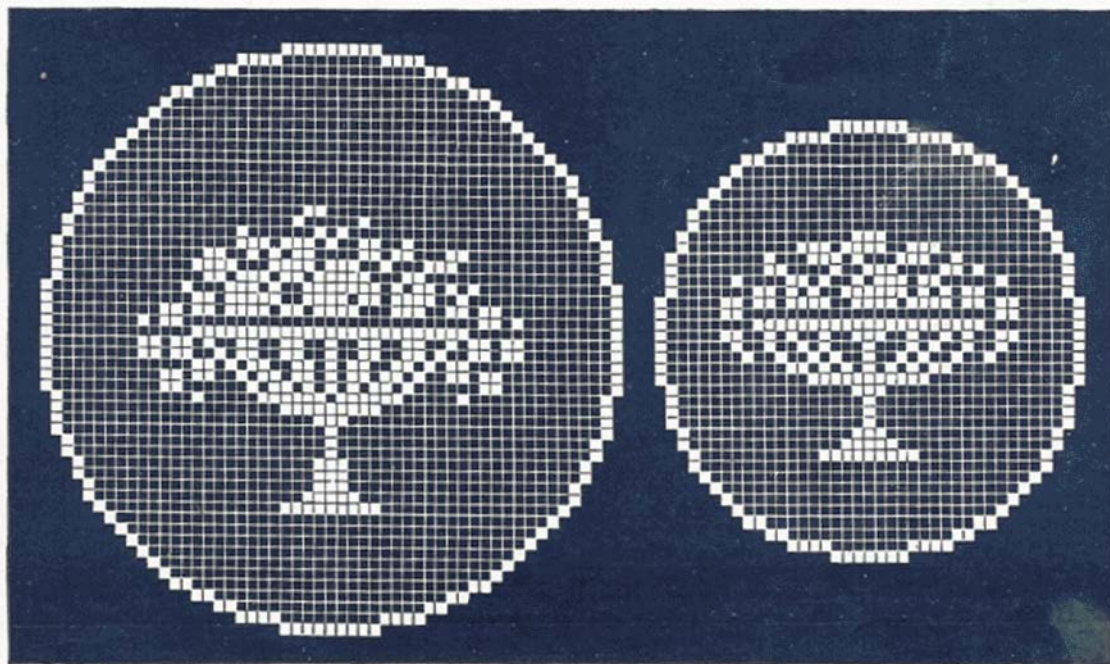


PLATE 48

PLATE 49

A Centerpiece With Fruit Bowl Design

This Centerpiece used with the Doilies shown on page 13 will make a most appropriate Luncheon Set.

DIRECTIONS FOR CENTERPIECE

MATERIALS—Linen for center and Clark's O. N. T. Mercerized Crochet Cotton, No. 40 and O. N. T. Crochet Needle No. 9.

Ch 84, turn. 1st Row—Tr in 6th ch from neelle, 3 more tr in next 3 ch, 24 sp, ch 5, turn. 2d Row—24 sp, 4 tr over 1 tr, 2 tr in loop, ch 5, turn. 3d Row—2 tr over ch, 6 tr over 6 tr, 4 sp, 1 bl, 19 sp, ch 5, turn. Follow pattern (Plate 43), widening in each row, as above, until 9th Row—2 tr over ch, 7 tr over 7 tr, ch 2, skip 2, 9 tr over 9 tr, 5 sp, etc., continuing until 24th row is finished, when the open meshed point will have 24 meshes each way and there will be 52 tr in solid point, with 5 ch at end

1st Row of 2d Point—2 tr over ch, 2 tr over 2 tr, * ch 2, skip 1, repeat from * 23 times making 24 sp over the 50 tr, ch 5, turn and continue until there are sufficient points.

FOR THE HEADING—Work four rows around the linen as follows: * 1 tr, 1 ch, 1 tr in first stitch, skip 1, repeat around.

FOR THE EDGE—Work shells of 7 tr tr with p between, making three shells on each side point, one in the inner corner and a shell of 10 tr tr with p between at each outer corner.

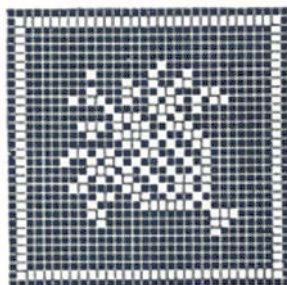


PLATE 50
Flot Corner for Centerpiece.

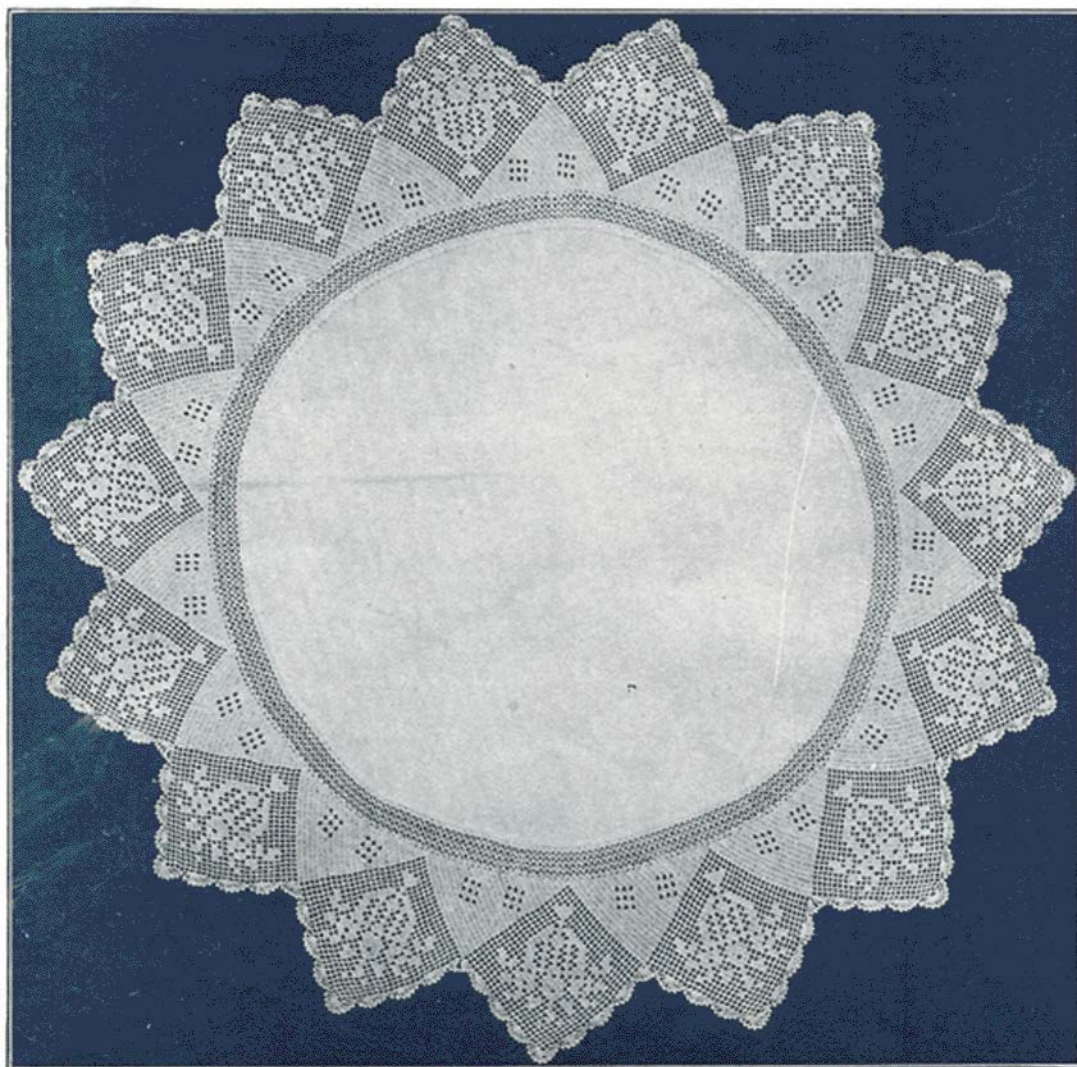


PLATE 51

Grape and Leaf Centerpiece

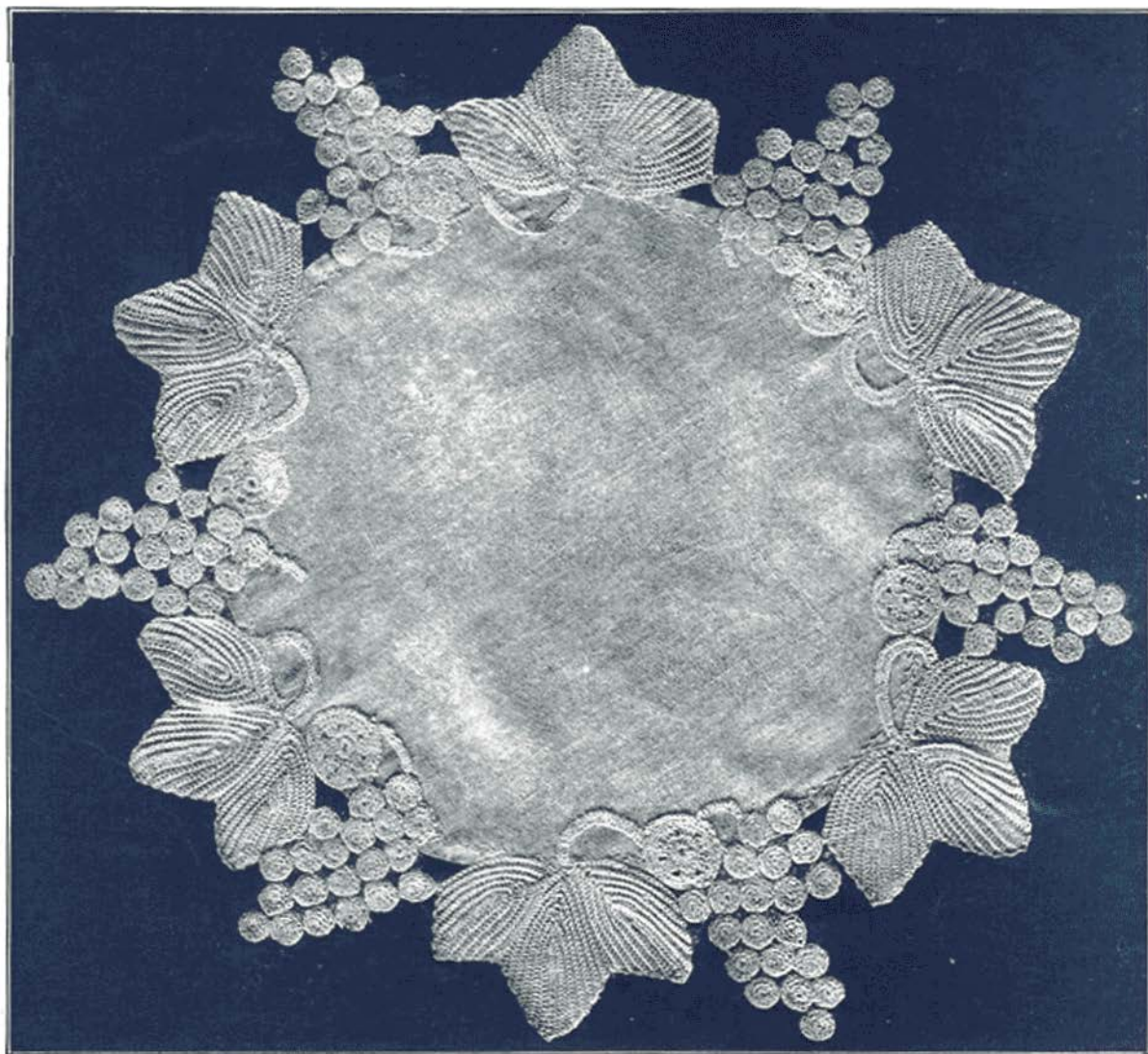


PLATE 52

DIRECTIONS

MATERIALS—Clark's O. N. T. Mercerized Crochet Cotton, No. 10, O. N. T. Darning Cotton for padding and O. N. T. Crochet Needle No. 4. A piece of linen 16 in. in diameter.

FOR LEAVES—See page 25, starting the central leaf with a chain of 22 and the side ones with 15 chain, joining the three as shown.

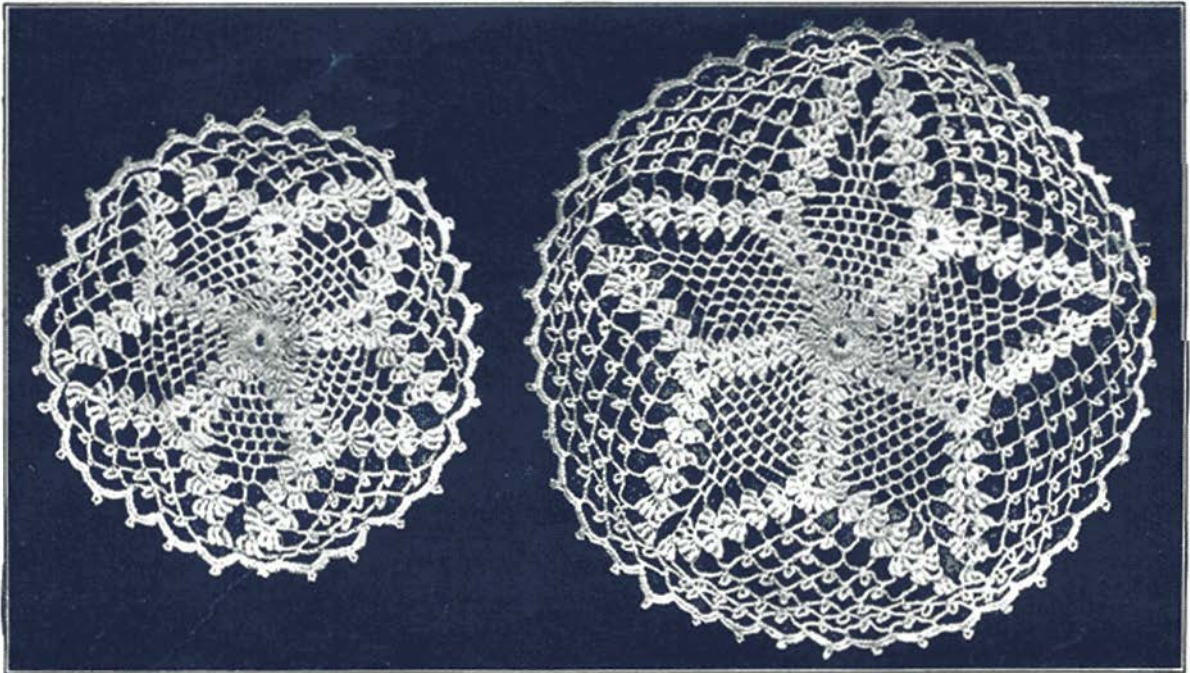
FOR MEDALLION—Ch 4, join. 1st Row—Ch 3, 27 tr in ring, join. 2d Row—4 tr in first 4 sts, ch 2, repeat 6 times, join. 3d and 4th Rows—Tr in every st, adding sts if necessary, to keep work flat.

FOR GRAPES—Use the padding cord. 7 sc over cord. Draw

to close circle, leaving no sp in center. 2d Row—Still over cord 14 s st. 3d Row—S st in each st, adding 1 a st in every third st. Make rows enough to make the grapes a little more than $\frac{1}{2}$ inch in diameter. For the last 2 rows do not widen; this to give a rounded effect. Arrange grapes, leaves and medallions as shown in plate, and sew in place.

A most effective square Luncheon Cloth could be made also from this design in the heavy thread (as likewise a large round one) by duplicating the design to fit the larger linen center, so arranged that the outside edge of leaves and grapes reach within 6 or 8 inches of outside edge of table for which it is made.

Star Luncheon Set



Glass Dolly

PLATES 53 AND 54

Small Plate Dolly

DIRECTIONS

MATERIALS—Clark's O. N. T. Mercerized Crochet Cotton, No. 20, O. N. T. Crochet Needle No. 6.

ROLL STITCH (r st)—Thread around needle 16 times, insert hook in work, thread over, draw through the work, thread over, pull through the coil, thread over, draw through the loop on hook.

The roll, when completed, is straight with a string the length of the roll on its left side.

The lengths of the rolls are regulated by the number of times the thread is put around the hook.

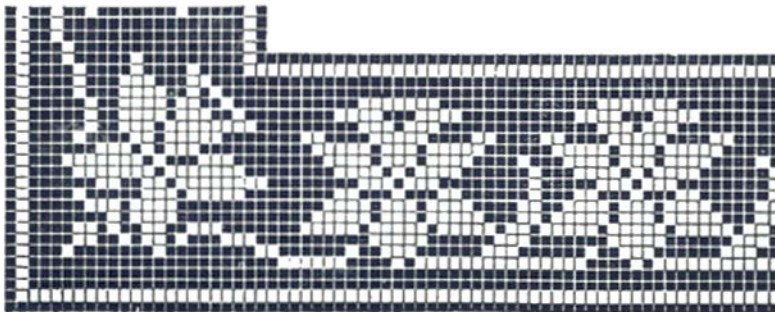
This set consists of 3 sizes round doilies. We will commence with the smallest. Shell used here, 3 rolls, 3 ch, 3 rolls.

Ch 9, join. **1st Row**—Fill this ring with 30 trs. **2d Row**—Sh, sk 2 st, ch 3, tr in next, ch 3, sk 2, sh in next, repeat around, you will have 5 shs with 3 ch, 1 tr, 3 ch, between sh, join. **3d Row**—Sh over sh, ch 3, tr over ch of last row, ch 3, tr over next ch, ch 3, repeat around, join. **4th, 5th, 6th Rows**—Same, except spaces increase each time, 6th row having 5 shells with 6 sp between shs. **7th Row**—2 sh over each sh, 5 sps between. **8th Row**—Sh over 1st sh of row, ch 6, p over

ch between shs, ch 6, sh over sh, 4 sp, repeat around, join. **9th Row**—* sh over sh, ch 6, s st into middle of 6 ch of last row, p, ch 6, s st into next ch, p, ch 6, repeat around. **10th Row**—Same, except sp decrease 1, each row, while ch of 6 with p between, increase 1 each row. **11th Row**—Has only 3 rolls in top of sh, 3 rolls in next sh, * ch 6, s st with p, in middle of ch of previous row, repeat 3 times, ch 6, repeat around from beginning, join. **12th Row**—6 chains, s st between each point of star, * 6 ch, s st in ch, repeat around. **Last Row**—Fill these chains with s st, with p in middle.

For the next size, make like this, only more rows. The double sh being on the 9th row, and the sh of 3 rolls on the 15th row, and the rows of 6 ch and p also increase in number.

In the next size the double sh comes on the 13th row. After the point is finished, at the 25th row the sh has 3 rolls over 1 row, 3 rolls over the other row, with 1 sp between and 13 chs of 6 each, between points, and 12 p. At the next row there is again a double sh (3 r, 3 ch, 3 r, 3 ch, 3 r, 3 ch, 3 r, 14ch of 6, p between chains). Next row sh over sh, 2 sp, sh over sh, 13 ch of 6 each, p between chs. Continue until you have piece as large as desired. Finish like small one



Border and Corner

This is an unusual design in jonquils, for a luncheon cloth or square centerpiece and a pretty napkin corner can be arranged by using the corner flower, without side stems and leaving four open meshes at each side of flower, and finishing sides then with one closed and one open mesh added as at top and bottom.

Large Plate Doily

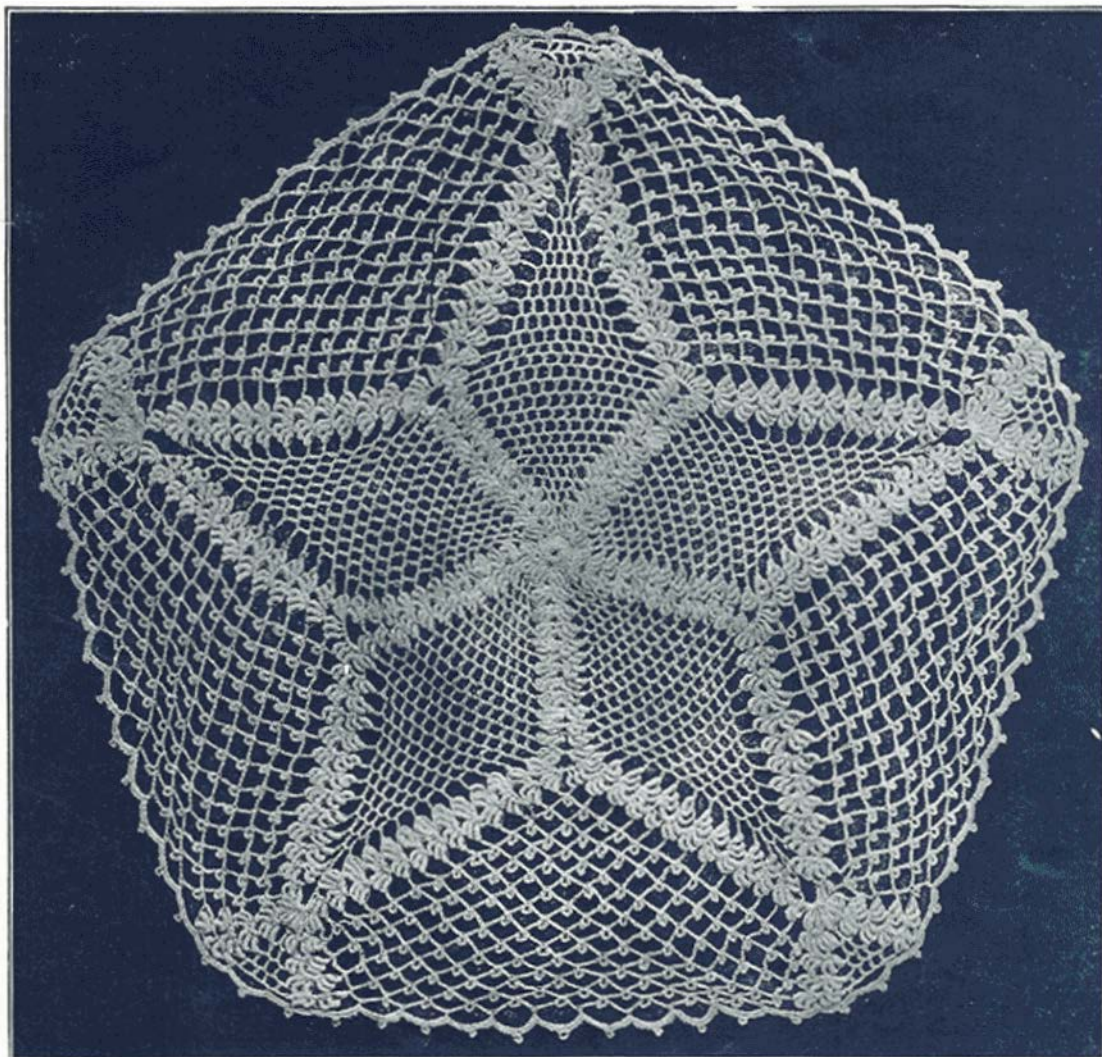


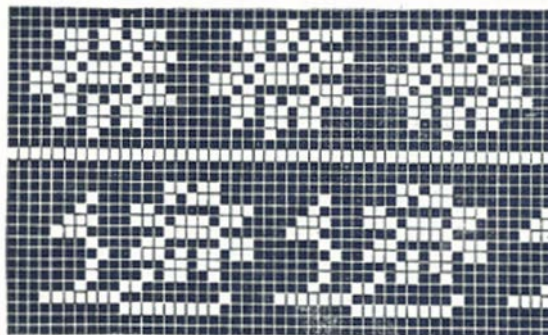
PLATE 55

Directions for Large Plate Doily, see page 16

Borders in Daisies

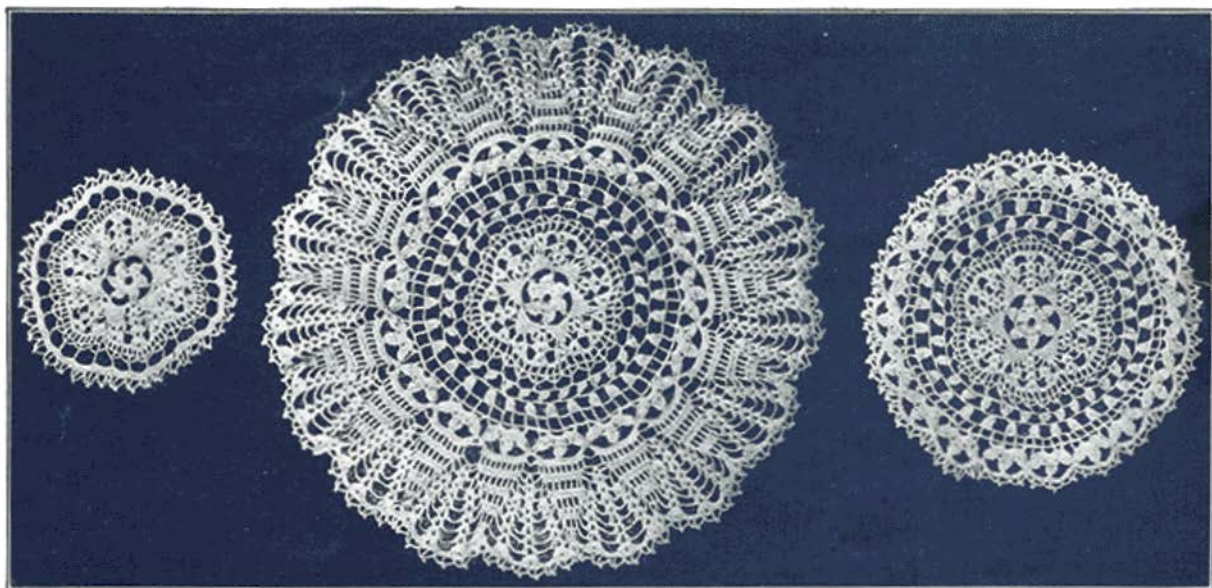
Some very simple and easy borders for napkins, tray cloths, doilies and scarfs.

The beginner in crocheting, will find them very useful to start on, before going into the more elaborate designs.



PLATES 56 and 57

Luncheon Set



PLATES 58, 59 AND 60

DIRECTIONS

This Luncheon Set consists of eight pieces—Centerpiece, Mat for Side Dish, two Plate Doilies, two Butter Plate Doilies, and two Glass Doilies.

MATERIALS—Small doilies of No. 60, next three in size of No. 50, and centerpiece of No. 30, Clark's O. N. T. Mercerized Crochet Cotton.

As the centers are made all alike, one description will suffice for all. Glass doily, $4\frac{1}{2}$ inches in diameter. Ch 12, join. **1st Row**—24 tr in ring, in 6 groups of 4 tr each, with 2 ch between groups, join. **2d Row**—Ch 4 for first tr, 4 more trs in the 1st group, hold the last stitch of all five on needle and draw thread through all at one time. This makes the first pointed leaf. Ch 9, make 5 more leaves, with 9 ch between, fasten last ch to 1st leaf. **3d Row**—10 st over each ch, join. **4th Row**—9 s st into each 10 s st of last row, ch 3 over point of leaf, repeat around, join. **5th Row**—7 s st over 9 of last row, ch 3, sh into middle of 3 ch, ch 3, repeat around, join. **6th Row**—5 s st over 7 of preceding row, ch 5, sh in sh, ch 5, repeat around, join. **7th Row**—3 s st, ch 3, sh in middle of ch of preceding row, ch 3, sh in sh, ch 3, sh in middle of next chain, ch 3, repeat all around, join. **8th Row**—S st in every st all around, join. **9th Row**—1 tr, ch 2, skip one st (or two if it will be too full otherwise), 1 tr in next, repeat all around, join. **10th Row**—Ch 3, tr in tr of last row, ch 3, sl st in next tr, repeat around. **11th Row**—Sl st to next tr, * tr over tr, ch 5, repeat around, join. These two rows make a row of fancy meshes, or lacets. **12th Row**—S st into every stitch around, join. **13th Row**—Same as 12th. **14th Row**—* ch 3, sk 2, 1 tr in next, p, ch 3, sk 2, sl st into next, * repeat around, join. This finishes the smallest doily.

Bread and Butter Plate Doily

7½ INCHES IN DIAMETER

First 11 rows like glass doily. **12th Row**—Into the 1st 4 ch of lacet make a h tr (like upper point of center flower), ch 6, sk 4 st, repeat all around, join. **13th Row**—Sl st to middle

of ch; in the third st make a group of 4 tr, ch 4, repeat all around, join. **14th Row**—Make a row of spaces all around, join. **15th Row**—* ch 6, sl st into next tr, ch 2, turn; make into this ch of 6, 3 groups of 4 tr, with 2 ch between groups, tr into next tr of last row, ch 3, turn and finish top of this half flower as you did the center flower, except that the last tr of the 3d leaf is a ch of five fastened into lower half of leaf, ch 3, sl st along the top of the next two spaces. Repeat around, join. Finish same as glass doily.

Plate Doily

11 INCHES IN DIAMETER

This is made like the Bread and Butter Plate Doily to the border.

1st Row of border—Over top of each flower make 20 st, ch 3, repeat all around. **2d Row**—Over 20 s st make * 10 tr, 1 ch between trs, ch 5, * repeat around, join. **3d Row**—Over 10 tr, make 17 s st, ch 3, tr into middle of 5 ch, ch 2, tr into same st, ch 3, repeat all around, join. **4th Row**—Over 17 s st, make 15 s st, ch 2, sh of 2 tr, 2 ch, 2 tr, over sh of 2 tr of preceding row, repeat around, join. 7 more rows, decreasing points between shell scallops and increasing sh scl enough to make the size wanted and finish with picot edge like the others.

Centerpiece

17 INCHES IN DIAMETER

Make like 14 rows of Plate Doily. **15th and 16th Rows**—make row of lacets, or fancy meshes. **17th Row**—Make the half flowers and finish shell border with a row of spaces before you add picot edge.

Side Mat

12x15 INCHES IN DIAMETER

This is made like the others, except with three flowers in center, joined as illustrated on page 19. Do not make sides too full.

Luncheon Set

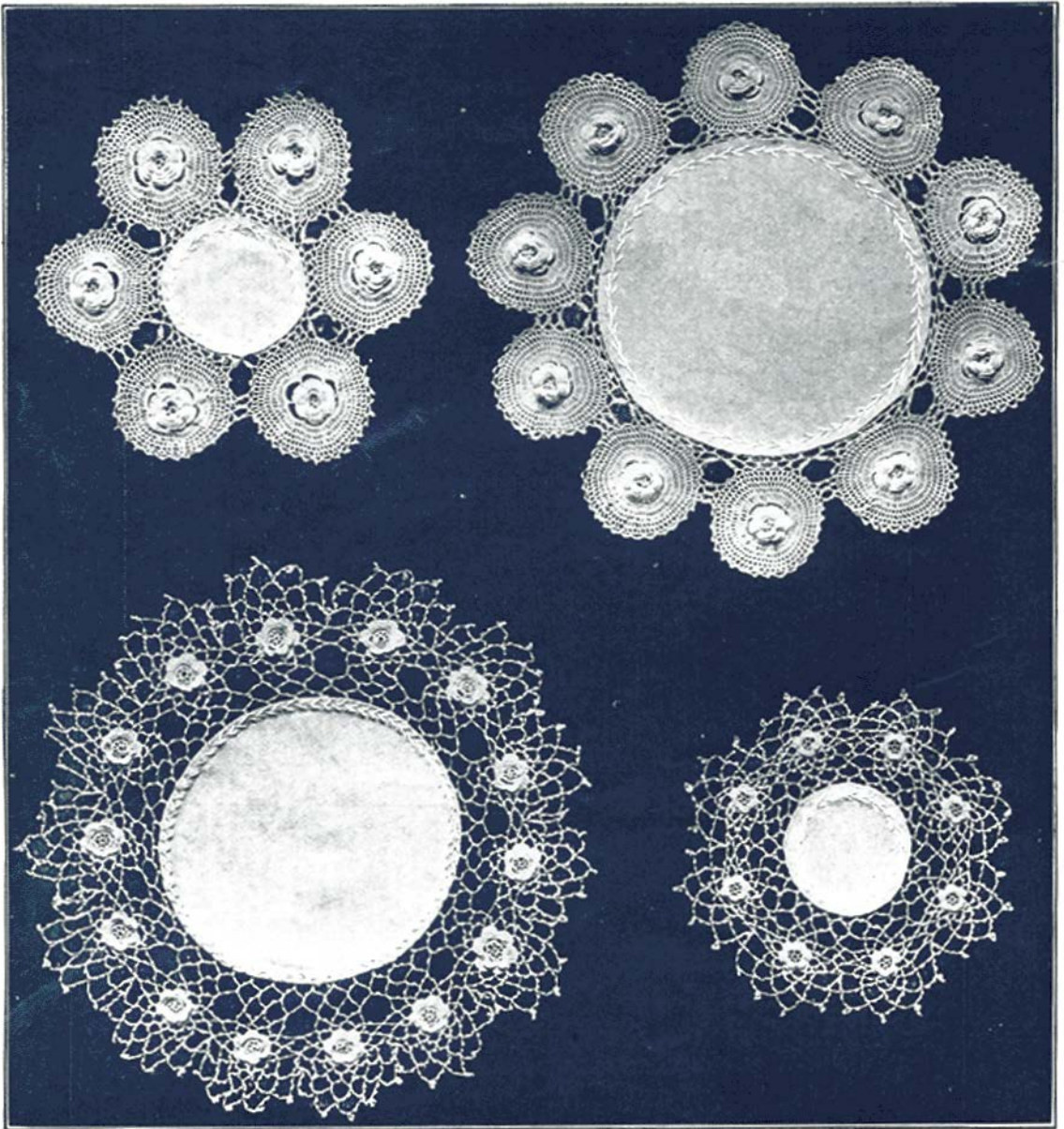


PLATE 61



PLATE 62

Two Sets of Rose Doilies



PLATES 63 TO 66

DIRECTIONS

All have linen centers, hemmed and briar stitched. For the roses, Clark's O. N. T. Mercerized Crochet Cotton, No. 80 and O. N. T. Darning Cotton for padding; for the borders, No. 100.

FOR THE ROSE IN CENTER—Wind padding cotton twice around a small pencil, cover this ring with 18 sc. 1st Row—* 1 tr, 1 ch, six times, join. In each of these sp, 1 tr, 4 d tr, 1 tr, join. 2d Row—Back of each leaf ch 3, fastening between with 1 s st. 3d Row—In these ch make another row of leaves of 1 tr, 7 d tr, 1 tr, join. 4th Row—Six times, 4 ch. 5th Row—6 leaves, each 1 tr, 10 d tr, 1 tr, slst.

FOR ROSE DOILIES—Around roses ch 12, s st into s st between leaves, repeat 5 times. 2d Row—Tr into each ch,

tr over s st all around. 3d Row—Same as 2d. 4th Row—1 tr, 1 ch, adding if necessary, all around. 5th Row—Like 4th. 6th Row—Tr, ch 2, repeat all around. 7th Row—Ch 3, p, ch 3, sk 1 sp, sl st into 2d sp, repeat around. Make 2d medallion same way. Join three picots to three of 1st, leaving 10 p between at top, or inside of circle, and 18 (unless extra sts were added in 4th row) on lower or outside. When desired number of medallions are joined in ring, * ch 3, p, ch 3, s st in 2d p from one where wheels are joined, * repeat 7 times, in next 7 p, catch in next medallion, same way, all around. Last Row—Row of ch all around between picots of preceding row. Sew to linen.

FOR DOILIES WITH OPEN BORDER—Make roses; surround with loops of ch with p as in illustration.

Shell Centerpiece

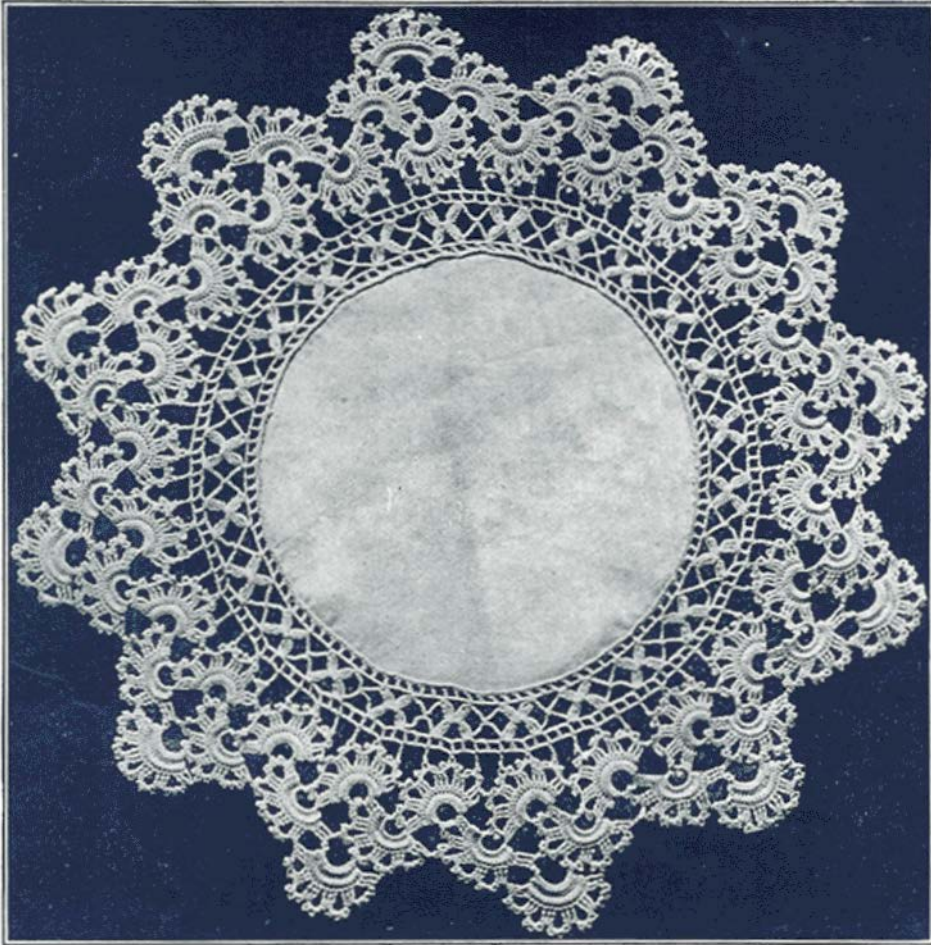


PLATE 67

DIRECTIONS

MATERIALS—Clark's O. N. T. Mercerized Crochet Cotton, No. 40 and O. N. T. Crochet Needle No. 10. Linen for center.

Make the shells first. Ch 15, join. * ch 1, and over half of the ring make 18 s st, ch 1, turn. 2d and 3d Rows—Make 18 s st in previous row, taking up back st only. 4th Row—Ch 4, for 1st d tr, 1 d tr in each of next 2 st, taking up both threads of st below, 3 p (ch 3, s st in first ch), 5 more groups of 3 d tr, with 3 p between. Ch 10, turn, sl st into 2d p, ch 1, turn and repeat from *, for 2d shell. For 3d shell, ch 10 from last d tr of 2d sh, turn and fasten in center of last group of picots; on the 4th row of this sh, when you ch 4 for the first d tr, join the ch to the center of 2d group of picots of the first shell. Finish this row as usual. Make 4th shell in the same way until you come to the 4th row. Join the 4 ch that make the 1st d tr, to the center of the 2d group of picots of 2d shell. Make 2 more d tr, as usual, ch 10 for 5th sh, sl st into center

of 3d group of picots of 2d sh, and continue 5th shell, fastening after the 4 ch that make the first d tr, to the center of 4th group of picots of 2d shell. Finish 5th sh, and then finish 4th shell. This completes the first group of 5 shells. Repeat from first * until you have the circle as large as desired.

FOR THE INSERTION—* d tr into center of first group of picots of first shell, ch 5, sst into center of 2d group, ch 5, d tr into center of 3d group, ch 5, repeat from * all around. 2d Row—All spaces. 3d Row—Sl st to center of sp, ch 11, skip 2 sp, sl st in next sp, ch 5, h d tr of 2 st (see page 2, half double treble), in same sp, ch 1, skip 2 sp, h d tr in next, ch 5, sl st in same sp, repeat from * all around. 4th Row—* sl st to 6th ch of 11 ch in 3d row, ch 5, h d tr between groups of 3d row, ch 5, sl st in same place, ch 5, another h d tr in same place, ch 5, sl st in center of 11 ch, and repeat from last * all around. 5th Row—Sl st to point where h d tr and ch meet, * ch 7, s st in next h d tr, and repeat all around. Last Row—All spaces.

Glass and Plate Doilies



PLATE 68

DIRECTIONS

MATERIALS—A square of linen, hemstitched, Clark's O. N. T. Mercerized Crochet Cotton, No. 60, and O. N. T. Crochet Needle, No. 12.

FOR MAKING THE BORDER—This is made in squares. 12 little rings in first and last squares. 8 in the rest of rows. The first ring is started with a ch of 9, all the others with 12; 8 for the ring, the rest for the ch between rings. In the first ring make 2 sc, p, 2 sc. 2d Ring—Ch 12, join into 8 st from needle; in this ring 2 sc, p, 2 sc, p, 2 sc, p, 2 sc. The 3d, 5th, 6th, 8th, 9th, 11th, 12th are all made like the 2d. The 4th, 7th and 10th are made like the 1st except they commence with 12 ch. When 12 rings are made join with 3 ch to 1st st of 1st ring, being careful that all the ch loops are untwisted and that the picots are all in the inside of the square. On the outside ch 3, and go back, beginning with the 2d ring made. Make rings 2, 3, 5, 6, 8, 9 with 3 p on the outside, like the inside. Rings 4, 7 are made 2 sc, p, 2 sc, p, 2 sc, p, 2 sc, p, 2 sc, making 3 ch between all rings. When the 9th ring is finished, ch 3, 2 sc, p, 2 sc into the 10th ring at the corner, then start another square with 12 ch, making rings 2, 3, 4, 5, 6, 7, 8, 9 as you did the first, joining the 9th to the side of the 7th ring of the 1st square. Ch 3 and turn, finishing five of these rings as you did the first ten. Make 22 squares like this, leaving one side unfinished. When the 22 are done, go back and make the bottom clear across, making 3 ch between rings, and 3 p in each ring as before. For the star ch 8, join, ch 6, fasten in center p of 1st ring on inside of square. On this ch 6, make 1 sc, 4 dc, join to ring in center. Make 8 of these points, fastening two on each side of the square.

FOR THE LITTLE EDGE ON THE BORDER—1st Row—° ch 8, sl st into p of next ring, ° repeat all around. 2d Row—A row of sp all around. 3d Row—° ch 4, sk 1 sp, tr in next, ch 1, p, ch 1, p, ch 1, p, ch 1, tr in same sp with last tr; ° ch 4, s st in 2d sp, repeat around.



PLATE 69

Dining Room Chair Tidy

DIRECTIONS

MATERIALS—Clark's O. N. T. Mercerized Crochet Cotton No. 50 and O. N. T. Crochet Needle No. 11.

Follow Plate 71, below, omitting the outer row of spaces. Begin at lower edge. Ch 256, turn, and beginning in the 4th st from needle, make 256 tr, ch 3, turn. 2d Row—1 bl, 83 sp, 1 bl, ch 3, turn. 3d Row—1 bl, 3 sp, 1 bl, 69 sp, 4 bl, 3 sp, 1 bl, ch 3, turn. 4th Row—1 bl, 2 sp, 1 bl, 2 sp, 4 bl, 19 sp, 27 bl, 19 sp, 4 bl, 2 sp, 1 bl, 2 sp, 1 bl, ch 3, turn. Follow pattern for rest of design. To make the tassels, ch 15, draw thread through last loop, cut off about two inches from the loop, draw through the end tr of the first row, tie the ends of the threads together. Repeat about 22 trebles apart, across the row. Then wind the cotton on a cardboard as wide as you want the tassels to be long, allowing for good, heavy tassels. Cut along one edge, draw the desired number of strands through each crocheted loop, double in the center and wind another thread around a short distance from the loop and tie securely.



PLATE 70

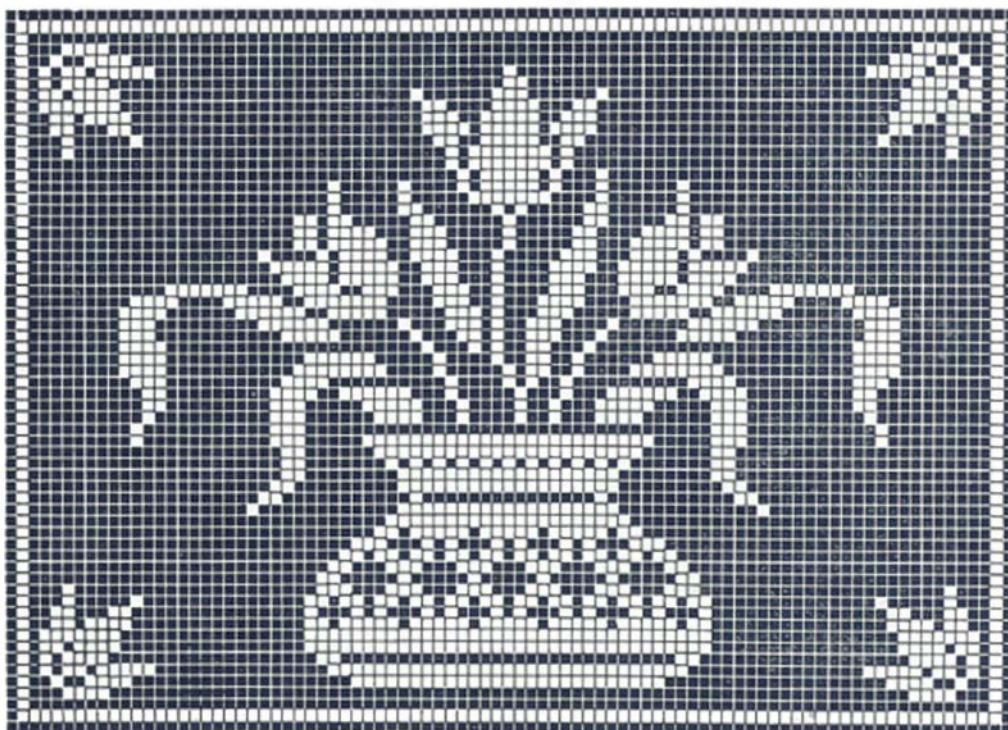
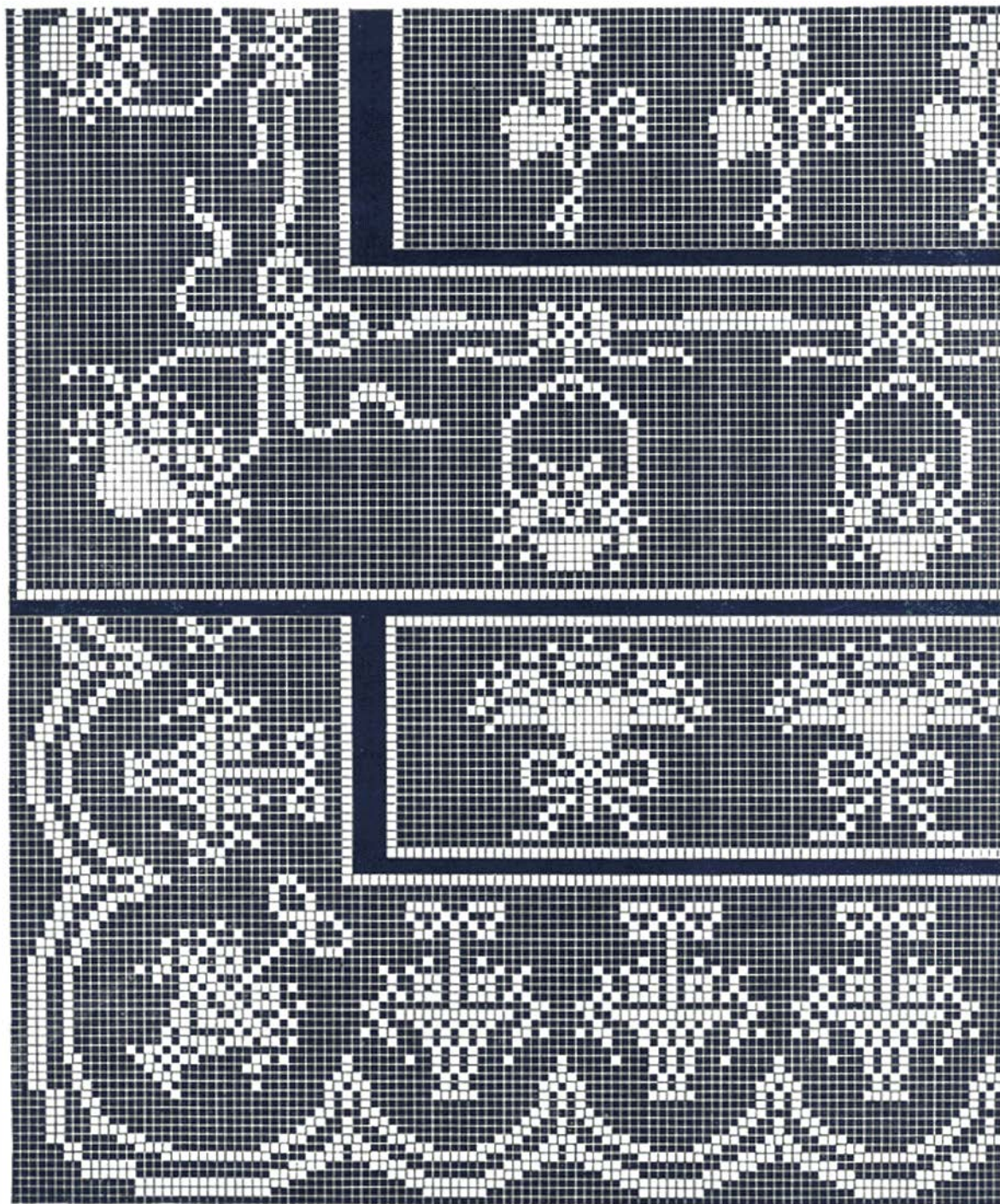


PLATE 71

The Pattern for Plate 70

Borders for Various Household Linens



PLATES 72 TO 75

The designs are arranged so that they may be used singly, as medallions. By leaving open meshes, outside the design of either basket, bouquet, or single flower, the worker will have square or long medallions, for any use in decorating the linens that carry these borders. Plate 75 can

be used as an insertion as well as an edge if two open and one closed mesh be worked all around outside of scallop. A beautiful luncheon cloth may thus be evolved, with this insertion put just on top of table.

Sideboard Cover in Three Pieces

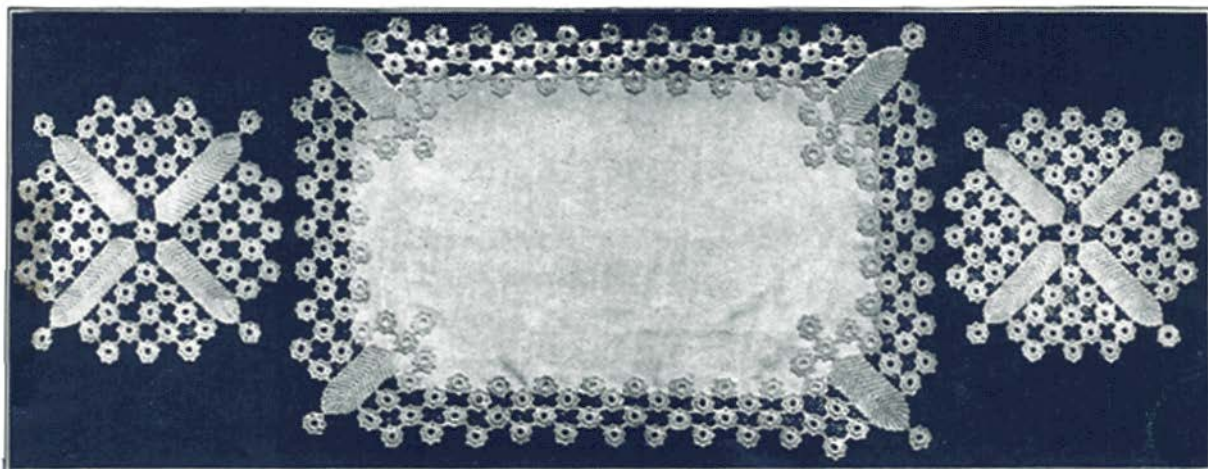


PLATE 76

DIRECTIONS FOR SIDEBOARD COVER

MATERIALS—Linen, 10 balls of Clark's O. N. T. Mercerized Crochet Cotton, No. 5, and O. N. T. Crochet Needle No. 3.

These pieces are composed of two motifs, rings and leaves. For each small mat, make 57 rings and four small leaves; for the large mat, make 104 rings and four large leaves. Arrange as shown in the illustration.

FOR A RING—Ch 8, join, ch 3, and in the ring work

3 s st, 3 ch, repeat from * 7 times, join, fasten off thread. These rings may be joined together as they are made, by working * ch 1, join to other ring, ch 1, instead of ch 3.

FOR SMALL LEAF—Ch 11, 1 s st into 4th from needle, one s st in each of next 7, 3 s st into end ch, and 8 s st up the other side of chain, ch 3, turn. Repeat until there are 21 ribs, each row having 8 s st each side of the central 3 stitches. The large leaves are started with a chain of 13, and have 10 stitches on each side of the central 3 st, with 17 ribs.



PLATE 77

WIDE EDGE FOR WINDOW SHADES

MATERIALS—Clark's O. N. T. Mercerized Crochet Cotton No. 20 and O. N. T. Crochet Needle No. 6. This edge has three sections for description. The heading, the rings and the oblong motifs.

FOR THE HEADING ch 21. 1st Row—2 tr in 9th st from needle, ch 2, 2 tr in same st (the first shell). Ch 5, sl st into 6th st from sh, ch 5, sh into 6th st from sl st, ch 6, turn. 2d Row—Sh in sh, ch 5, sl st into last sl st, ch 5, sh in sh, ch 3, tr into 3d of 8 ch in beginning, ch 6, turn. 3d Row—Sh in sh, ch 11, sh in sh, ch 6, turn. 4th Row—Sh in sh, ch 5, sl st into 6th st of 11 ch, ch 5, sh in sh, ch 3, tr into 3d ch, and repeat for length desired.

FOR THE RINGS—Ch 12, join. 1st Row—24 s st over the ring, join. 2d Row—* ch 5, s st in each of next two st, and repeat around. There will be 12 picots. Where the rings are joined to each other or the heading, instead of ch 5, make 2 ch, join with sl st, ch 2. See illustration for joining.

FOR THE OBLONG MOTIF—Ch 16, d tr in 5th ch from needle, 11 more d tr along ch, ch 4, turn. 2d Row—Skip 1 st, tr in next, * ch 1, sk 1, tr in next, repeat from * for six spaces, ch 12, make 6 sp on other side, ch 12, join to 3d of 4 ch. 3d Row—S st in each st all around (50 sts), ch 1, turn. 4th Row—S st in back of each st, making 7 extra sts at each end, over 12 sts (64 sts). 5th Row—* ch 3, sk 1, tr in next, picot (of 3 ch), ch 1, p, ch 1, tr in same st as last tr, ch 3, sk 1, sl st in next, and repeat 13 times. Join to other motifs as illustrated.

Hot Rolls Napkin



PLATE 78

DIRECTIONS

MATERIALS—A piece of linen the desired size. Clark's O. N. T. Mercerized Crochet Cotton, No. 100 and O. N. T. Crochet Needle No. 14.

FOR THE INSERT—Ch 199 and work 196 tr for the first row. 2d, 3d, 4th, 5th and 6th Rows—1 bl, 63 sp, 1 bl, ch 3, turn. Then follow design as given in Plate 80. The edge is hemmed, then finished with * 7 ch, s st into linen, and repeat from * around. 2d Row—Sl st to center of ch, ch 3, p, ch 3, s st into center of ch of preceding row, repeat from * around.

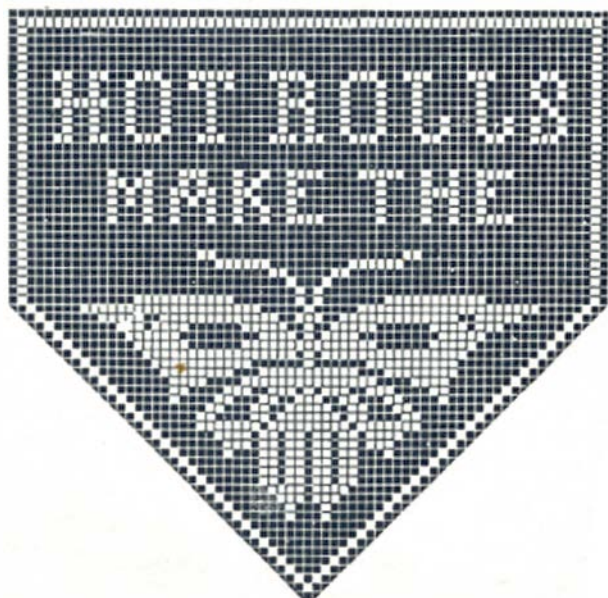


PLATE 80

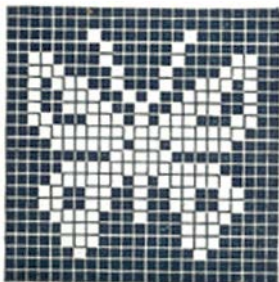


PLATE 79

The Butterfly is a very useful medallion to be set in the corners of napkins, buffet scarf, tray cover or as a continuous border for ends of scarfs, or other dining room needs.

Pansy Centerpiece

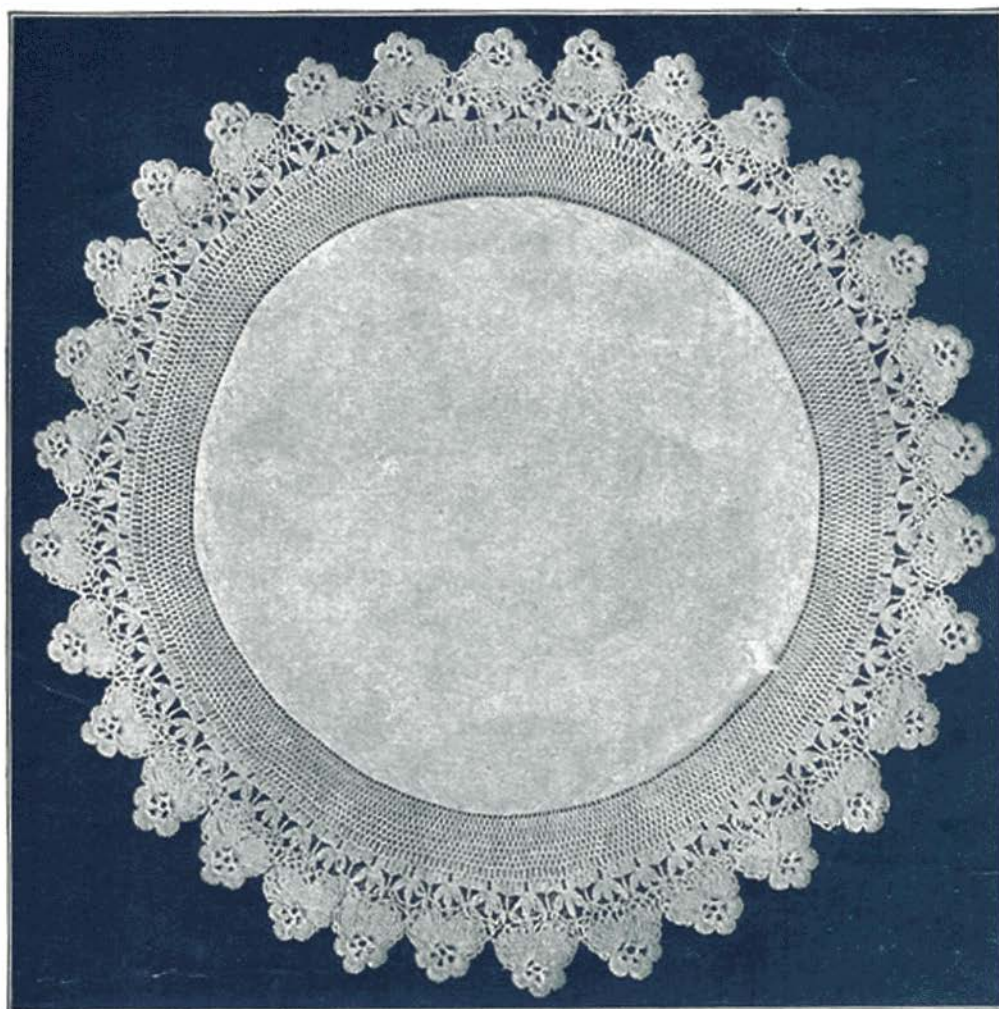


PLATE 81

DIRECTIONS

MATERIALS—Linen for center. Clark's O. N. T. Mercerized Crochet Cotton, size desired.

FOR THE PANSY—1st Row—Ch 7, join in ring. 2d Row—Ch 4, d tr, * ch 3, 2 d tr, repeat 3 times, ch 3, join. 3d Row—* over next ch work, 1 sst, 1 tr, 5 d tr, 1 tr, 1 s st, repeat twice. * Over next chain work, 1 s st, 1 tr, 2 d tr, 2 tr tr, 2 quadruple tr (thread over once more than for tr tr), 2 tr tr, 2 d tr, 1 s st, repeat once, ch 5, turn. 4th Row—Sk 1 st of previous row, sst in next, ch 5, and repeat, working 8 loops over each of the two large petals, then fasten thread. Make as many pansies

as required for the centerpiece. Finish the edge of the linen and work a row of spaces around it. Work 3 rows of 2 tr in sp, ch 1, and repeat. Then work 4 rows of 2 tr in sp, ch 2, and repeat. One row of 2 d tr in sp, ch 2, and repeat. One row of 2 tr tr in sp and repeat. 11th Row—Tr tr, sk 6 tr tr, * group st of 3 tr tr, ch 5, sst over top of group, ch 3, repeat from * twice in same st, sk 6 tr tr, and repeat from beginning. 12th Row—This row joins the pansies to the last row. Ch 2, s st in loop of pansy, ch 2, s st in loop over group, continue, putting s sts in tr between groups and taking up end loops of adjoining pansies at one time to hold them closely together.



A simple and useful border for scarf ends and luncheon cloth.



PEARL SMALL BALLS



6 CORD MEROERIZED OROCHET



SPOOL COTTON



"LUSTRE"



4 STRAND SMALL BALLS



PEARL MEDIUM BALLS

CLARK'S O.N.T. COTTONS

MADE TO SUIT EVERY REQUIREMENT FOR

SEWING CROCHETING TATTING CROCHETING KNITTING EMBROIDERY MARKING DARNING PADDING

Uses

Articles

Important Particulars

SEWING.....	Spool Cotton	The standard thread for Hand and Machine Sewing. May be had in White, Black and a large range of staple and novelty colors.
CROCHETING.....	Crochet.....	Plain Finish. White and Colors
TATTING.....	Crochet and Tattling.....	Plain Finish. White only
	Crochet Twist.....	Plain Finish. White and Colors
	Mercerized Crochet.....	Mercerized. White and Colors
CROCHETING.....	"Lustré".....	Mercerized. White and Colors
KNITTING.....	Pearl.....	Mercerized. White and Colors
EMBROIDERY.....	Coton A Broder.....	Mercerized. White and Colors
	Embroidery.....	Mercerized. White and Colors
	Floss Embroidery.....	Mercerized. White only
	6 Strand—Skeins.....	Mercerized. White and Colors
	4 Strand—Small Balls.....	Mercerized. White and Colors
	4 Strand—Large Balls.....	Mercerized. White only
MARKING.....	Marking.....	Plain Finish. White and Colors
DARNING.....	Darning.....	Plain Finish. White and Colors
PADDING.....	Mercerized Darning.....	Mercerized. White and Colors

SPECIAL NOTE—Everything possible is done to dye the various colors true to standard, but it is advisable always to buy at one time enough Cotton to finish the article which you intend to make.

DIRECTIONS FOR WASHING EMBROIDERIES AND LACES

Use warm suds made with pure soap. Rub lightly. Rinse thoroughly. Dry quickly.

Send 2c stamp for Patterns with full working instructions.

CLARK'S O.N.T. PATTERN BOOKS

Book of Needlework..... \$.25

Plain Sewing, Mending, Embroidery, Smocking, Swedish Weaving, Cross Stitch, Crocheting, Tattling and Knitting.

Crochet and Tattling..... \$.10

For Aprons, Caps, Baby Articles, Bags, Bed Spreads, Oldie, Kidings, Purse, Scarf, Shawl, Tea Cozy, Collar and Cuff Set.

These books may be purchased from your dealer, or will be sent postpaid.

THE SPOOL COTTON COMPANY, DEPT. A
315 FOURTH AVENUE NEW YORK CITY



CROCHET



CROCHET AND TATTING



DARNING



PEARL SKEIN



EMBROIDERY



MERCERIZED DARNING



FLOSS EMBROIDERY



6 STRAND SKEINS



MARKING



COTON A BRODER

MILWARD'S HELIX NEEDLES



West End Needle Case



Plain Eyes



Gold Eyes



Household Needle Case

HENRY MILWARD & SONS' ACCESSORIES FOR PLAIN AND FANCY NEEDLEWORK

To obtain the best results, first-class materials are absolutely essential. Your attention, therefore, is directed to the superior quality and excellent finish of the Needles, Crochet Hooks, Knitting Needles, and various other articles of Messrs. Henry Milward & Sons, Ltd., which are the result of more than one hundred years of experience. They are made of the best steel, by skilled workmen and by the most improved methods.

CROCHET HOOKS

Proper Crochet Hook Sizes for Clark's **O. N. T.** Crochet Cottons

Clark's O. N. T. Crochet Cotton Nos	1	3	5	10	15	20	25	30	40	50	60	70	80	100
Crochet Hooks Nos	1	2	3	4	5	6	7	8	9	10	11	12	13	14

Proper Crochet Hook Sizes for Clark's **O. N. T.** Pearl Cotton

O. N. T. Pearl Cotton Nos	3	5	8	12
Crochet Hooks Nos	4	6	7	9



Milward's Cleopatra Crochet Hooks—Bone Handle are made in fourteen sizes, Nos. 1 to 14



Bone Crochet Hooks. These are made entirely of bone and in two lengths, five-inch and six-inch. The five-inch may be had in six sizes, 0 to 5, and the six-inch in seven sizes, 0 to 6.

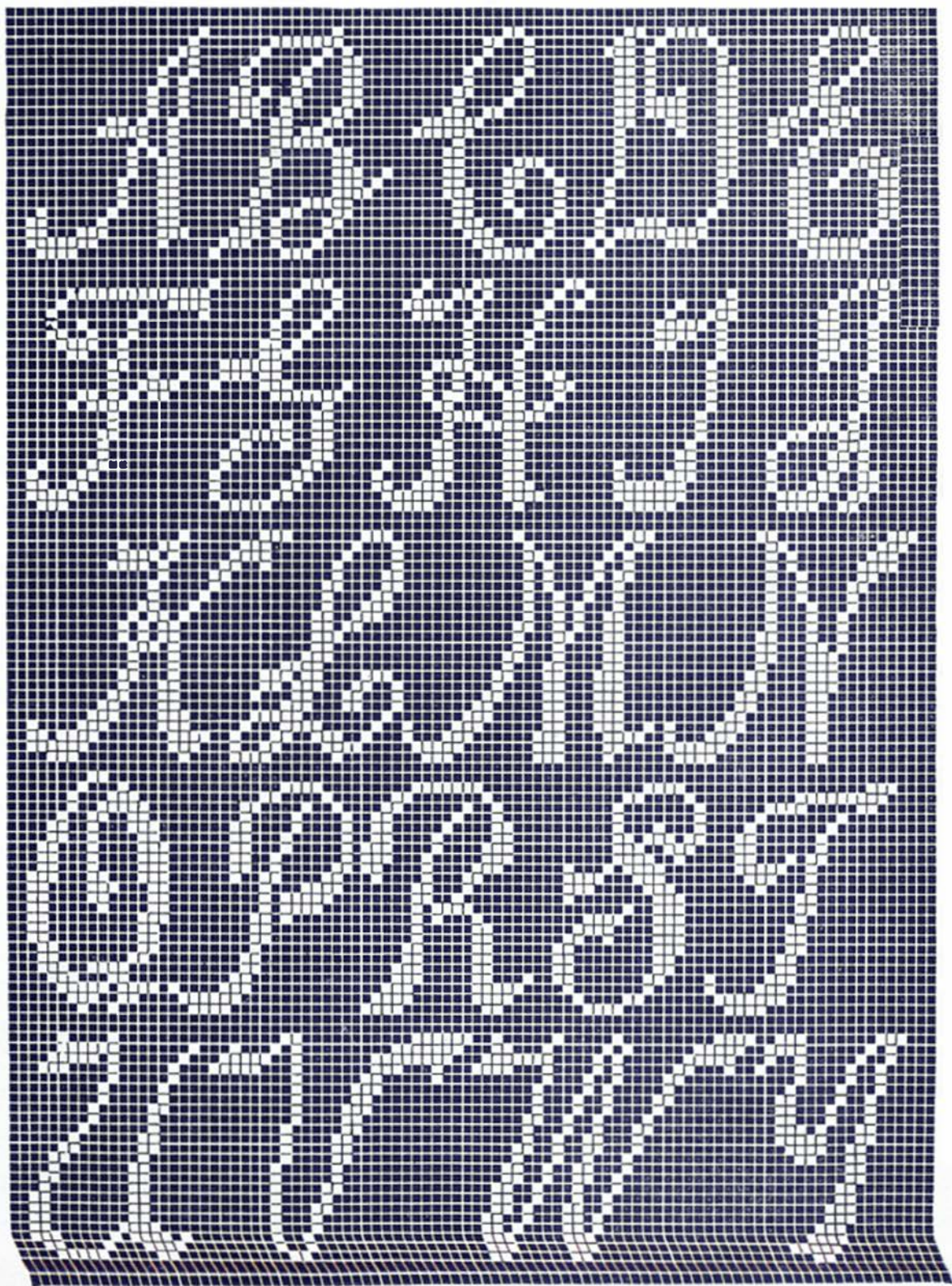


Milward's Nickel Plated Crochet Hooks No. 420--Round Steel Handle—Are made in fourteen sizes, Nos. 1 to 14.



Clark's O. N. T. Nickel Plated Crochet Hooks. An attractive feature of this hook is the flat grip, which prevents the hook from turning when in use and gives perfect control in working. They are made in eight sizes, Nos. 7 to 14.

Script Alphabet



PLATES 82 TO 111



