

## The Antique Pattern Library

For more information, please see our website at: <http://www.antiquepatternlibrary.org>



This is a scan of an antique book that is, to the best of our knowledge, in the public domain. The scan itself has been photo-edited for readability, and is licensed under the **Creative Commons Attribution-NonCommercial-ShareAlike License**. To view a copy of this license, visit <http://creativecommons.org/licenses/by-nc-sa/2.5/> or send a letter to Creative Commons, 559 Nathan Abbott Way, Stanford, California 94305, USA.

You may share copies or printouts of this scan freely. You may not sell copies or printouts.

Donated by

**Debra Carr**

**11/2010**

ROYAL TRADE MARK SOCIETY  
REG. U. S. PAT. OFF.

# LAMP SHADES <sup>and</sup> MEDALLIONS

## CROCHET BOOK

### Nº 21



**10 cents**  
in U.S.

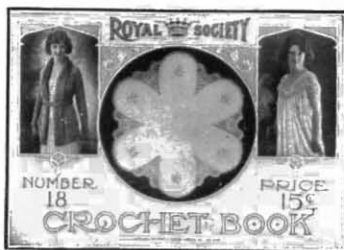
15 cents Elsewhere

ROYAL SOCIETY

ROYAL SOCIETY CROCHET BOOKS



No. 17 contains a novel feature in enlarged Filet Crochet Charts. There are up-to-date Sweaters, Yokes for Nightgowns and Camisole, Luncheon Sets, Collar and Cuff Sets, Child's Slippers and Petticoat, Centerpieces, Scarfs, Pillows, Edges, also complete directions.



No. 18 contains handsome Sweaters and Tams in new stitches; Edges, Gowns and Camisole Yokes, Filet Collar, Luncheon Sets, Scarfs, Pillows, Slippers, Centers, etc., with enlarged charts for counting Filet and complete directions.



No. 19 contains Tea Cloths and Napkins, Scarfs, Pillows, beautiful Nightgown Yokes, stylish Sweaters and Novelty Girdle or Sash, very dressy Hand Bags, and an unusually different variety of Edges and Insertions.



No. 20 A very complete book on Sweaters giving a variety of attractive styles with handsome illustrations and block drawings, also diagrams showing exactly how to increase or decrease the size of every Sweater. This is an unusually valuable book.



No. 16 contains 40 pages of attractive articles of wearing apparel and home use. Nightgown Yokes, Boudoir Cap, Slippers, Child's Dress, Sweaters, Bag, Luncheon Sets, Lamp Shades, Scarfs, Pillows, Novelties, etc.



No. 15 contains a wide variety of designs for wearing apparel and decorative purposes, Nightgown Yokes, Sweaters, Children's Hats, Slippers, Hand Bags, Bootees, Scarfs, Pillows, Bedspreads, Edges, etc. Also thorough instructions.



No. 14 Crochet and Knitting—contains the newest Sweaters, Bags, Lamp Shades, Nightgown Yokes, Children's Hats, Baby Bootees and Cap Scarfs, Pillows, Man's Vest, Edges, Slippers, Novelties, etc.



No. 13 contains Sweaters, Nightgowns, Shirt Waist, Corset Covers, Sport Stockings, Collar and Cuff Set, Bags, Baby Dress, Children's Hats, Bedspreads, Scarfs, Pillows, Hot Water Bag, etc., also hand embroidery suggestions.



No. 12 Contains a host of articles for Knitting and Crocheting, also Embroidery, Filet, Arabian and Fantaisie, Fancy Knitting and Knitted Laces, Sweaters, Tams, Sport Vests, Baby Articles, Nightgown Yokes, Camisole.



No. 11 contains Knitted and Crocheted Sweaters, Scarfs, Tams, Sport Vests Yokes, Shirt Waists, Bags, Lamp Shades, Boy's Cap, Baby Jacket, Caps, Collars, Cushions, etc., and complete directions.



No. 10 contains Yokes, Cap and Slippers, Aprons, Edges, Card Basket, Lamp and Candle Shades, Cushions, Scarfs, Carriage Robe and Cap, Pin Cushion, Collar Box, etc. Also full crochet instructions.

Nos. 10, 11, 12, 13, 14, 15, 20—10c per copy

No. 16, 17, 18, 19—15c per copy

ROYAL SOCIETY

ROYAL SOCIETY

## CROCHET BOOK No. 21

THE unusually beautiful Lampshades shown in this book are so accurately explained they become very simple to follow.

The embellishment of these shades with Royal Society Sweater Twist enhances their beauty, and combined with silk and Georgette gives a rich and elegant finish.

The variety of medallions, insertions, etc., which are illustrated with suggestions for their different uses, are worked with Royal Society Crochet Cottons, and directions are all carefully compiled by an expert.

Should there be any point, however, which is not entirely clear, we shall be glad at any time to supply additional information.

All first-class dealers are familiar with the exceptional quality of Royal Society Art Needlework Materials. They will be glad to give you information and serve you with whatever Royal Society items you may wish.

As the Royal Society line is very extensive a dealer may sometimes happen to be out of the article you require, in which case if you ask him to order the goods for you, we will ship them to him promptly.

Accept nothing but Royal Society, which you CAN and SHOULD have to insure the beauty and durability of all your art needlework.

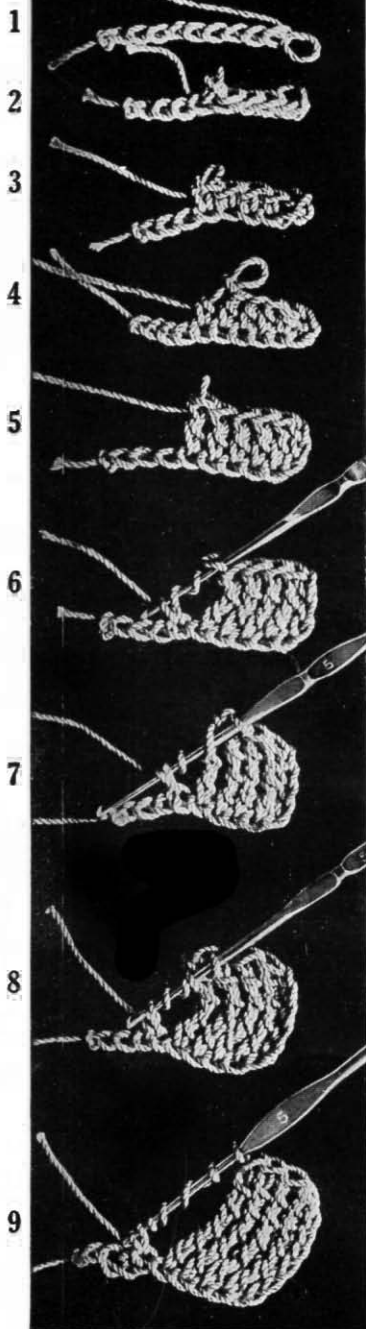
### Filet Crochet Table—Using Royal Society Cordichet

Size of Cordichet	Number of Hook	Meshes to Inch	Size of Cordichet	Number of Hook	Meshes to Inch
3	7	3	40	11	6
5	8	3	50	12	7
10	9	4	60	12	7
15	9	4	70	13	8
20	10	5	80	14	8
30	11	5	100	14	9

Correct hook to use with { Crochet Sizes...3...5  
Two-Ply Crochet { Hook Sizes...5...6

Use Steel Crochet Hook No. 6 when working with Royal Society Sweater Twist

CROCHET STITCHES



**1-CHAIN STITCH**—Catch the thread with needle, forming a loop. Pull the thread with the needle through this loop to form the first stitch. Continue chain to desired length.

**2-SLIP STITCH**—Make row of chain stitches. Insert needle in last chain and pull thread through. Pull loop thus made through first loop.

**3-SINGLE CROCHET**—Make row of chain stitches. Insert needle in last chain and pull thread through, thus having two loops on needle. Wind thread once over needle and pull through the two loops.

**4-HALF DOUBLE CROCHET**—Wind thread once around needle, insert into chain and pull loop through. Wind thread around needle again and pull through three loops at once.

**5-DOUBLE CROCHET**—Wind thread once around needle. Insert needle into chain and pull thread through; this leaves three loops on needle. Wind thread once around needle and pull through two. Wind thread again over needle and pull through two.

**6-TREBLE CROCHET**—Make same way as Double Crochet, only at first wind thread twice over needle and pull thread through three times—two and two and two.

**7-DOUBLE TREBLE CROCHET**—Make same way as Double Crochet, only at first wind thread three times over needle and pull thread through four times—two at a time.

**8-QUADRUPLE CROCHET**—Make same way as Double Crochet, only at first wind thread four times over needle and pull thread through five times—two at a time.

**9-QUINTUPLE**—Make same way as Double Crochet, only at first wind thread five times around needle and pull through six times—two at a time.

**10-SEXTUPLE**—Make same way as Double Crochet, only at first wind thread six times around needle and pull through seven times—two at a time.

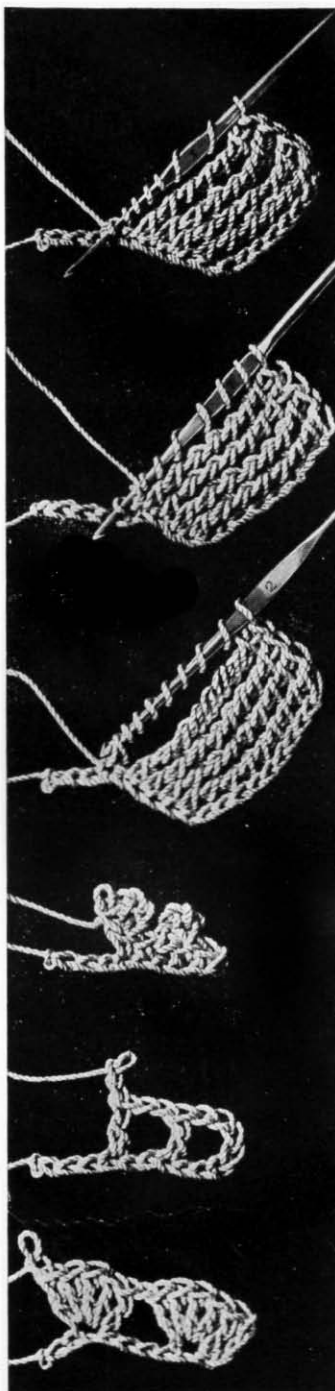
**11-SEPTUPLE**—Make same way as Double Crochet, only at first wind thread seven times around needle and pull through eight times—two at a time.

**12-OCTUPLE**—Make same way as Double Crochet, only at first wind thread eight times around needle and pull through nine times—two at a time.

**13-PICOT**—After Single Crochet, chain four, take up two front ribs of last single crochet and make one single crochet. Always skip one stitch after picot.

**14 MESH**—Used in filet crochet work. Chain two stitches, skip two stitches, one double crochet into next stitch.

**15-SHELL**—Five Double Crochet in one stitch form shell.



ABBREVIATIONS

ch.	means chain
sl.st.	" slip stitch
s.c.	" single crochet
h.d.c.	" half double crochet
d.c.	" double crochet
tr.c.	" treble crochet
d.tr.c.	" double treble crochet
quad.	" quadruple

quint.	means quintuple
sex.	" sextuple
sep.	" septuple
oct.	" octuple
l.	" loop
*	" sign of repetition
p.	" picot
st.	" stitch

sts.	means stitches
sk.	" skip
sp.	" spoke
m.	" mesh
sh.	" shell
k.	" knit
pr.	" purl
k.st.	" knot stitch

DIRECTIONS FOR FILET CROCHET

For the beginner in Filet Crochet, it would be well to read the following directions carefully and practice with the working models shown before starting a piece of work. The Filet Crochet is worked in "open" and "closed" meshes shown in the diagram in black and white squares, which are made entirely in chain and double crochet.

For the foundation ch. make 3 times as many chains as meshes shown in first row of diagram and add 1. Always ch. 5 to turn.

**Open Mesh:** 1 d.c., ch. 2, sk. 2 chs., 1 d.c. into next ch. to close mesh. This forms a perfect square. In making rows of open meshes the d.c. is always made into d.c. of previous row.

**Closed Mesh:** 1 d.c. into d.c., 2 d.c. into 2 chs., 1 d.c. into next d.c.

Fig. 1. Working Model Showing Open Mesh

To make a number of open meshes like Working Model Fig. 1, which has 10 open meshes, ch. 30, add 1 ch. 5 more to turn, sk. 8 chs., 1 d.c. into 9th ch. (this forms the first open mesh), \* ch. 2, sk. 2 chs., 1 d.c. into 3rd ch., this forms the 2nd open m. Repeat from \* until 10 open meshes are made. For 2nd row, turn, ch. 5, 1 d.c. into 2nd d.c. of preceding row, ch. 2, sk. 2, 1 d.c. into next d.c. and repeat.

Fig. 2. Working Model Showing Closed and Open Mesh.

Fig. 2 shows 1 row of open and 1 row of closed meshes and small design and is started with 7 closed meshes, ch. 21, ch. 3 more to turn, sk. 3 chs., 1 d.c. into each of the 21 chs. (The ch. 3 at beginning counts for first d.c.), turn, ch. 5, sk. 3 first d.c., 1 d.c. into fourth d.c., ch. 2, sk. 2, 1 d.c., continue across the last d.c. to be put into the last ch. of ch. 3, turn, ch. 3, sk. first d.c., \* 1 d.c. into each of next 2 chs., 1 d.c. into next d.c. (this forms a closed m. at beginning of a row), ch. 2, sk. 2 chs., 1 d.c. into next d.c., ch. 2, sk. 2 chs., 4 d.c. into next 4 sts. (this forms a closed m. in the center of design), ch. 2, sk. 2 chs., 1 d.c. into next d.c., ch. 2, sk. 2 chs., 4 d.c. into next 4 sts., turn, ch. 5, sk. 3 d.c., 1 d.c. into next d.c., ch. 2, sk. 2 chs., 4 d.c. into next 4 sts. and continue.

Fig. 3. Working Model Showing Increasing and Diminishing of Open Mesh.

**1st Row.**—To make first 3 meshes, ch. 9, add 1, ch. 5 more to turn, sk. 8 chs., 1 d.c. into next, ch. 2, sk. 2 chs., 1 d.c. into next ch. 2, sk. 2 chs., 1 d.c. into last ch., turn.

**2nd Row.**—To increase one mesh at beginning of row, ch. 8, 1 d.c. into first d.c., ch. 2, 1 d.c. into next d.c., ch. 2, 1 d.c. into 3rd d.c., ch. 2, sk. 2 chs., 1 d.c. into next ch. To increase one mesh at end of row, ch. 5, 1 d.c. into same ch. as last d.c., turn, 1 sl.st. into each of last 3 chs. made (these sl.st. bring you up to top of 2nd row).

**3rd Row.**—To increase 2 meshes at beginning of row, ch. 11, sk. 8, 1 d.c. into next ch., ch. 2, sk. 2 chs., 1 d.c. into same st. as last sl.st. Make 5 chs. as last d.c., turn, 1 sl.st. into each of last 3 chs. made (these sl.st. bring meshes. To increase 2 meshes at end of row, ch. 5, 1 d.c. into same st. as last d.c., turn, ch. 5, 1 d.c. into 3rd ch. of last ch. 5 (this row has 9 meshes).

**4th Row.**—To increase 3 meshes at beginning of row, ch. 14, sk. 8 chs., 1 d.c. into next ch., ch. 2, sk. 2 chs., 1 d.c. into next ch., ch. 2, sk. 2 chs., 1 d.c. into next d.c. Make 9 inches. To increase 3 holes at end of row, ch. 5, 1 d.c. into same st. as last d.c., turn, ch. 5, 1 d.c. into center st. of last ch. 5, turn, ch. 5, 1 d.c. into center st. of last ch. 5, turn, 3 sl.sts. into 3 last chs. made. The sl.sts. bring you up to top of row. Any number of meshes can be increased in this way.

**5th and 6th Row** are each 15 open meshes, turn.

**7th Row.**—To decrease 3 meshes at beginning of row, 10 sl.sts., 1 into each st. over first 3 meshes, ch. 5, 1 d.c. into next d.c., 8 more open meshes, turn.

**8th Row.**—To decrease 2 meshes 7 sl.sts., 1 into each st. over first 2 meshes, ch. 5, 5 open meshes, turn.

**9th Row.**—To decrease 1 m., 4 sl.sts., 1 into each, over first mesh ch. 5, 3 m.

Fig. 4. Working Model Showing Increasing and Diminishing of Closed Mesh.

Start with 4 closed meshes.

**1st Row.**—Ch. 16, sk. 3, 12 d.c. into chs., turn.

**2nd Row.**—To increase 1 closed mesh at beginning of row, ch. 5, sk. 3, 2 d.c. into 2 chs., 1 d.c. into each of 11 d.c. To increase 1 closed mesh at end of row, cotton around needle, insert into next ch., pull through 1 loop which forms 1 ch., then twice through 2 loops, thus forming d.c. \* Cotton around needle, insert into ch. made before last d.c., ch. 1, finish d.c. like preceding one. Repeat from \* twice more, turn.

**3rd Row.**—To increase again 1 closed m. at each end ch. 5, sk. 3, 2 d.c. into 2 chs., 7 d.c. into 7 following d.c., ch. 2, sk. 2, 1 d.c., ch. 2, sk. 2, 1 d.c., 6 d.c. into 6 following d.c., cotton around needle, insert into next ch., ch. 1, finish d.c., \* cotton around needle, insert into ch. made before last d.c., ch. 1, finish d.c. Repeat twice from \*, turn.

**4th Row.**—To increase 2 closed meshes at beginning of row, ch. 8, sk. 3, 5 d.c. into 5 next chs., 7 d.c. into 7 following d.c., 4 open meshes, 6 d.c. into 6 following d.c. To increase 2 closed meshes at end of row proceed the same way as to increase 1 closed mesh only, instead of 4 d.c. made with 1 ch. as before making 7 d.c. this way. To increase 3 or more closed meshes proceed the same way only at beginning of row ch. 3 for each additional closed mesh. At end of row make 3 d.c. as explained for each additional closed m.

**5th Row.**—3 closed meshes, 6 open meshes, 3 closed meshes, turn.

**6th Row.**—4 closed meshes, 4 open meshes, 4 closed meshes, turn.

**7th Row.**—To decrease 2 closed meshes at beginning of row, 7 sl.sts. over the 7 first sts. of row, ch. 3, 9 d.c. into 9 following d.c., 2 open meshes, 3 closed meshes, turn.

**8th Row.**—To decrease 1 closed mesh at beginning of row, 4 sl.sts. over 4 first sts., ch. 3, 18 d.c. into following sts. (or 6 closed meshes), turn.

**9th Row.**—Decrease 1 mesh, make 4 closed meshes.

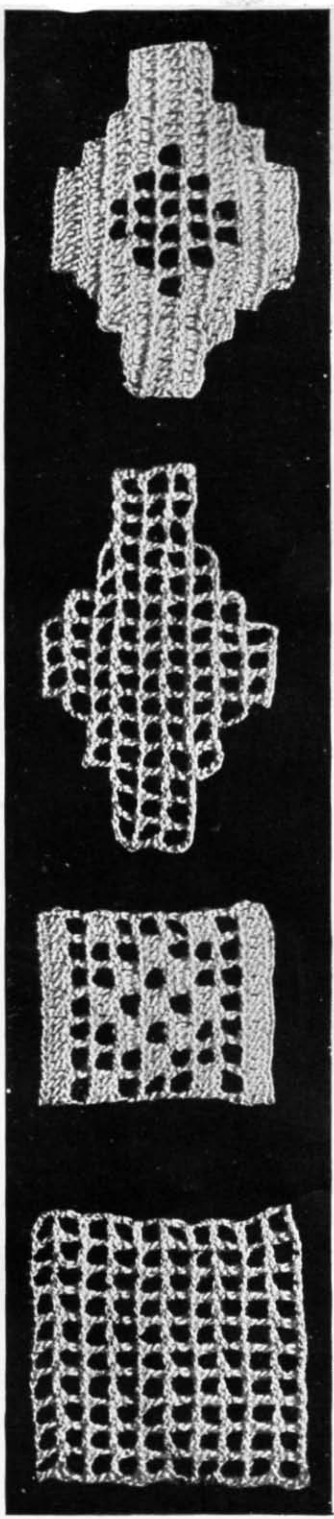
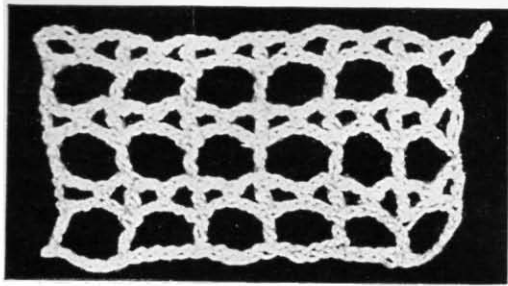


FIG. 4

FIG. 3

FIG. 2

FIG. 1



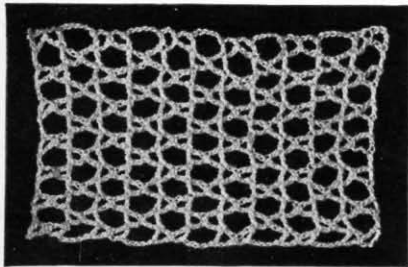
LACET STITCH

For foundation ch. make six times as many chains as meshes shown in first row of diagram and add on ch. (6 open ms., 37 chs.)

**1st Row**—Sk. 11 ch., 1 d.c., ch. 5, sk. 5 ch., 1 d.c., repeat to end of row.

**2d Row**—Ch. 5, sk. 2 ch., 1 s.c. in next ch., ch. 2, 1 d.c. in d.c. of previous row, repeat to end.

**3d Row**—Ch. 8, 1 d.c. in d.c. of previous row, \* ch. 5, 1 d.c. in d.c. of previous row, repeat from \* to end of row.



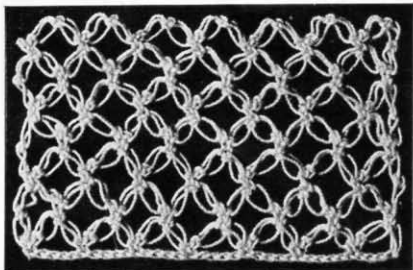
ALTERNATED LACET STITCH

Make a foundation ch. for required length.

**1st Row**—Sk. 7 chs. next to hook, 1 s.c. in next st., ch. 2, sk. 2 sts., 1 d.c. in next st., \* ch. 5, sk. 5 chs., 1 d.c. in next st., ch. 2, sk. 2 chs., 1 s.c. in next st., ch. 2, sk. 2 chs., 1 d.c. in next st., repeat from \* across, ending row with ch. 5, 1 d.c. in sixth st.

**2d Row**—Ch. 5, turn, 1 s.c. in third of 5 chs. of previous row, ch. 2, 1 d.c. in next d.c., \* ch. 5, sk. next five sts., 1 d.c. in next d.c., ch. 2, 1 s.c. in third of next five chs., ch. 2, 1 d.c. in next d.c., repeat from \* across.

Repeat second row as often as required.



KNOT STITCH

Make one row of ch. sts.

**1st Row**—\* Draw st. on hook to one-quarter inch, take up thread and draw through this loop, then put hook under the thread just drawn through between it and the loop below, take up the thread, draw through again. This forms 1 s.c. at point of loop, repeat from \* once more, sk. 4 chs., 1 s.c. in next st., repeat from the beginning across.

Work the s.c. sts. in next and succeeding rows in the middle of the k.st. loops of previous row as shown in the illustration.

## BOOK OF INITIALS AND MONOGRAMS

532 to 600

Assorted Sizes from ½ inch to 6 inches

A very valuable Hot Iron Transfer Book, containing a wonderful assortment of initials and monograms transferable by hot iron to handkerchiefs, linens, men's shirts, children's apparel, bedspreads etc. It also tells what size initials are correct for the different uses. There is a separate book for each letter in the alphabet.



15c PER COPY

## BOOK OF HOT IRON EMBROIDERY TRANSFER DESIGNS

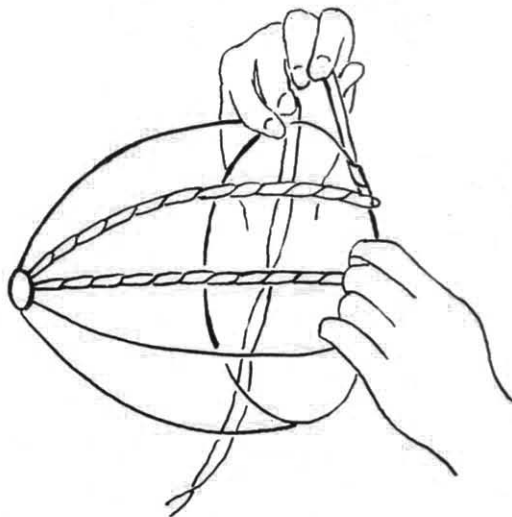


This book contains 12 full pages of artistic designs to be stamped by hot iron to handkerchiefs, lingerie, towels, children's articles—two complete alphabets, etc. It also gives instructions for making picot edges on handkerchiefs.

The variety of designs in this book makes it exceptionally good value, and one which can be used for countless articles.

15c PER COPY

## Directions for Winding Wire Lampshade Frames



The covering or winding the wire frame is the first step in the making of the lampshade.

Silk seam binding, or binding ribbon which harmonizes with the material used for the outside covering, is the best or the most convenient to use for winding the wires. Jap silk of the same color cut into one-inch strips may also be used for winding the wires. Keep double edge of the silk on top and wind down, then fasten the end with a few stitches over lower wire.

The length of the ribbon or silk must be twice the length of the wire to be covered and a little more. The wires should be well covered and wound so tight that the silk or ribbon cannot be moved between the fingers. It should be smooth and even.

Cover all vertical wires first, then horizontal, top and bottom wires last.

Start to wind at top where the vertical wire joins the horizontal wire. Hold the frame with the left hand, with the end of the ribbon placed under the thumb at the top of the vertical wire, then with the right hand wind the ribbon around the top wire and back over the end of ribbon held under the thumb, then wind down and fasten the end to lower wire.

Cover the top, then bottom horizontal wires, turn in the end of the ribbon or silk and sew to frame. Any additional information regarding the wire frames will be furnished upon request.

## Lampshade No. 1434

### LIVING ROOM MODEL

#### Materials required:

Wire Frame No. 210, 12x12 inches.  
 Old Rose Jap Silk, 18 $\frac{1}{2}$ x18 $\frac{1}{2}$  inches.  
 Blue Georgette, 18 $\frac{1}{2}$ x18 $\frac{1}{2}$  inches.  
 Old Rose Seam Binding, 7 yards.  
 ROYAL SOCIETY Sweater Twist No. 570 Blue Bell, 2 spools  
 No. 580 Old Rose, 1 spool  
 Steel crochet hook No. 6.

With Blue Bell Sweater Twist work pointed motif, following instructions of letter L motif.

#### PICOT EDGE

Make a chain 54 inches long.

**1st Row**—Sk. 1 ch. next to hook, then work 1 s.c. in each st. of the foundation chain, turn.

**2d Row**—Ch. 1, then 1 s.c. in each of the first two s.c., \* 1 p., then 1 s.c. in each of the next four s.c., repeat from \* to end of row.

#### FRINGE

With Blue Bell make a chain 54 inches long.

**1st Row**—Sk. 1 ch. next to hook, then work with double thread (one Blue Bell and one Old Rose) 1 s.c. in next ch., \* insert hook in next ch., then wind the double thread with left hand around a 4 $\frac{3}{4}$ -inch piece of cardboard, throw threads over hook and draw through ch., throw threads over and draw through the two loops on the hook, thus working 1 s.c., repeat from \* to end of row. Cut loops to form the fringe.

Wind the wire frame with the Old Rose seam binding (for directions see page 5).

Now stretch the Old Rose Jap silk over top of wire frame, pinning it very close to bottom wire, and sew securely.

Turn silk back on the right side and sew again, then trim edge close to the wire.

Stretch and sew on Blue Georgette in same manner. Sew on fringe around the scallop edge, then sew on the picot edge neatly, covering top of fringe.

Attach motifs as illustrated.

*Lampshade No. 1434 is illustrated on page 21 with Medallion L*





## Lampshade No. 1441

### RECEPTION ROOM MODEL

#### Materials required:

Wire Frame No. 4, 22x22 inches.  
 Orange Jap Silk,  $1\frac{1}{8}$  yards.  
 Purple Georgette,  $1\frac{1}{8}$  yards cut as follows:  
     40x40 inches, 1 piece.  
     9x40 inches, 3 pieces for flounce.  
 Orange Georgette,  $\frac{3}{4}$  yard cut as follows:  
     9x40 inches, 3 pieces for flounce.  
 Persian Chiffon, 1 yard cut in two 18-inch pieces.  
 Orange Seam Binding, 20 yards.  
 Small round Old Gold Wooden Beads, 5 strings.  
 Oval Old Gold Wooden Beads, 2 strings.  
 60 large round Old Gold Wooden Beads.  
 ROYAL SOCIETY Sweater Twist  
     No. 600 American Beauty, 4 spools.  
 ROYAL SOCIETY Celesta No. 1393 Purple, 24 skeins.  
 Steel crochet hook No. 6.

#### BEADING

Start with ch. 7, sk. 6 chs. next to hook, 1 d.c. in next st. to form a mesh, \* ch. 1, turn, 1 s.c. in first d.c., then 1 s.c. in each of the next two chs., ch. 4, turn, sk. first two s.c., 1 d.c. in next s.c. to form a mesh, repeat from \* for required length of wire to be covered.

Heading.—2 s.c. in first mesh, \* 1 p., 1 s.c. in next ch. over s.c. sts., 2 s.c. in next mesh, repeat from \* all along the edge on both sides of the beading.

With the Purple Celesta make a chain the length of

the insertion. Thread end in coarse needle or bodkin and run through open meshes over and under s.c. sts. like in darning stitch.

The beading at the top of the Persian chiffon is slightly curved in working the heading of the one side as follows: 2 s.c. in first mesh, \* 1 p., 2 s.c. in next mesh, repeat from \* along the edge of heading at the top. Run Purple chain through the meshes.

Narrow Beading over Flounce.—Start with ch. 4, sk. 3 chs. next to hook, 1 d.c. in next st., \* ch. 3, turn, sk. first d.c., 1 d.c. in next st., repeat from \* for required length around the bottom wire.

Round Medallion with Purple Center.—Start with ch. 15, join to ring.

**1st Row**—Ch. 1, \* then 4 s.c. into the ring, ch. 6, turn, sk. 3 s.c., 1 sl.st. in next st., turn, then work 4 s.c. around ch. loop, 1 p., 4 s.c. around same ch. loop, repeat from \* 5 times more, so that there are six scallops in all. Break the thread and secure the end.

**Purple Center of Round Medallion.**—With Purple Celesta start with ch. 4, sk. 3 chs. next to hook, then work 13 d.c. in first ch., 1 sl.st. in third ch. to close row.

**Next Row.**—Ch. 1, then work 1 s.c. in each st. of the previous row, break thread and sew over small round wooden mould or gather edge lightly and attach to center of the medallion.

**Pointed Motif.**—Start with ch. 11, join to ring.

# Lampshade No. 1443

## BEDROOM MODEL

### Materials required:

- Wire Frame No. 7, 5<sup>1</sup>/<sub>2</sub> x 5<sup>1</sup>/<sub>2</sub> inches.
- Old Rose Jap Silk, 18x18 inches.
- White Jap Silk, 18x18 inches.
- White Seam Binding, 5 yards.
- ROYAL SOCIETY Celesta No. 1302 Blue, 10 skeins.
- Small round Old Gold Wooden Beads, 1 string.
- Oval Old Gold Wooden Beads, 1/2 string.
- Amber crochet hook No. 5.

### NARROW BEADING

With amber crochet hook No. 5 and the Celesta taken double make a loose chain for the required length of the wire to be covered.

### BOWKNOT

With Celesta taken double make a loose chain nine inches long and tie into a bowknot, secure the ends.

Wind the wire frame with the White seam binding (for directions see page 5).

Now stretch the White Jap silk over top of wire frame, pinning it very close on two vertical wires and around bottom wire and sew securely, making two seams. Turn silk back on the right side and sew again, then trim edge close to the wire.

Stretch and sew on the Old Rose Jap silk in the same manner.

Sew on the narrow beading neatly on all vertical wires and around the pointed edge, attach the bowknots, then sew on the wooden beads as illustrated.

**1st Row**—Ch. 1, 4 s.c. into the ring, ch. 6, turn, sk. 3 s.c., 1 sl.st. in next st., turn, then work 4 s.c. around ch. loop, 1 p., 4 s.c. around same ch. loop, then 4 s.c. into ring, ch. 6, turn, sk. 3 s.c., 1 sl.st. in next st., turn, 3 s.c. around ch. loop, ch. 6, turn, 1 sl.st. in third s.c. of the previous little scallop, turn, then work 4 s.c. around ch. loop, ch. 9, turn, 1 sl.st. in first ch. to form a ch. loop, turn, then work 11 s.c. in ch. loop, 4 s.c. around next ch. loop to finish little scallop, then 1 s.c., 1 p., 4 s.c. around next ch. loop to finish scallop, \* 4 s.c. into ring, ch. 6, turn, sk. 3 s.c., 1 sl.st. in next st., turn, 4 s.c. in ch. loop, 1 p., 4 s.c. in same ch. loop, repeat from \* twice more, break thread and secure the end.

### SQUARE MOTIF

Four small square motifs form the larger square motif. Small Square Motif.—Start with ch. 9, join to ring.

**1st Row**—Ch. 1, \* 4 s.c. in ring, ch. 6, turn, sk. 3 s.c., 1 sl.st. in next st., turn, 4 s.c. in ch. loop, 1 p., 4 s.c. in same ch. loop, repeat from \* three times more, break thread and secure the end, thus forming one small square medallion.

Work next medallion and join with previous one as follows: Ch. 9, join to ring.

**1st Row**—Ch. 1, 4 s.c. in ring, ch. 6, turn, sk. 3 s.c., 1 sl.st. in next st., turn, 4 s.c. in ch. loop, ch. 2, now drop st. from hook, insert hook in last p. of previous little motif, draw loop through, ch. 2, 1 s.c. in the two loops of last s.c. to form a p., 4 s.c. in ch. loop to finish scallop. Work next little scallop, joining to scallop opposite of previous motif, then finish like first motif. Work and join four small motifs to form the larger square motif.

Run a Purple chain through spaces around the edge to harmonize with the beading.

Wind the wire frame with the Orange seam binding (for directions see page 5).

Stretch the 40x40-inch Orange Jap silk tightly over top of wire frame to bottom wire, making six seams on six vertical wires, and sew securely. Turn silk back on the right side and sew again, then trim edge close to the wire.

Now stretch and sew on the 40x40-inch Purple Georgette in the same manner.

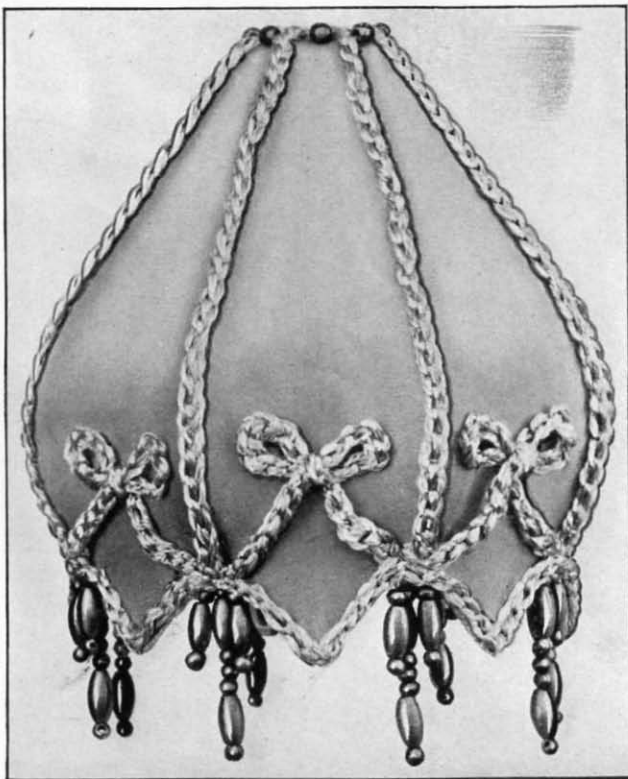
Sew up the Orange and Purple Georgette flounce seams and have the two pieces picoted together at the bottom edge.

Gather top of flounce and attach to bottom wire, then sew on the narrow beading to cover edge of flounce.

Now join the two 18x40-inch pieces of Persian Chiffon, divide in twelve parts and mark with basting thread. Have the lower edge of the Persian Chiffon picoted and each of the twelve parts hemstitched along the basting thread. Cut six inches of the hemstitching from the bottom edge up, gather each part of the picoted edge, attach to square motif and sew on the three strings of the wooden beads, as illustrated.

Now attach the Persian Chiffon to lampshade, each hemstitching on a vertical wire (10<sup>1</sup>/<sub>2</sub> inches from the bottom wire). Gather the top of the Chiffon and fasten Georgette.

Sew on the beading neatly on all vertical wires, then attach the curved beading to the top of Persian Chiffon and trim Chiffon. Attach the twenty-five round medallions, one at the top of each vertical wire, one to each section above the Persian Chiffon and one to center top, the twelve pointed motifs around the top, then sew on the rest of the wooden beads, as illustrated.



LAMP SHADE No. 1443



## Lampshade No. 1439

### LARGE BOUDOIR MODEL

#### Materials required:

Wire Frame No. 3, 17x17 inches, bottom wire.  
 Old Rose Jap Silk, 1 $\frac{1}{4}$  yards cut as follows:  
     32x32 inches, 1 piece.  
     5 $\frac{1}{2}$ x36 " 2 pieces.  
 Pink Chiffon, 1 $\frac{1}{8}$  yards cut as follows:  
     31 $\frac{1}{2}$ x31 $\frac{1}{2}$  inches, 1 piece for top.  
     12x40 inches, 3 pieces for drapery.  
 Old Rose Georgette, 1 yard cut as follows:  
     12x40 inches, 3 pieces for flounce.  
 Old Rose Seam Binding, 20 yards.  
 Small round Old Gold Wooden Beads, 5 strings.  
 Oval Old Gold Wooden Beads, 1 string.  
 18 large round Old Gold Wooden Beads.  
 ROYAL SOCIETY Sweater Twist  
     No. 580 Old Gold, 4 spools.  
 Steel crochet hook No. 5.

#### TRIANGLE MOTIF IN TATTING CROCHET

Start with ch. 11, 1 sl.st. in first ch. to form a ch. loop, \* turn, work in ch. loop as follows: 5 s.c., 1 p., 3 s.c., 1 p., 3 s.c., 1 p., 5 s.c., then 1 sl.st. in first of 11 chs. of loop, ch. 15, turn, 1 sl.st. in first ch. to form a ch. loop, turn. then work 5 s.c. in ch. loop, ch. 2, drop

st. from hook, insert hook in last p. of previous little scallop, draw loop through, ch. 2, 1 s.c. in the two loops of the last s.c. to form a p., thus joining two ps., continue working in same ch. loop as follows: 3 s.c., 1 p., 3 s.c., 1 p., 3 s.c., 1 p., 3 s.c., 1 p., 5 s.c., 1 sl.st. in first of 15 chs., ch. 11, turn, 1 sl.st. in first ch., turn, then work 5 s.c. in ch. loop, 1 p., joining with the last p. of the previous scallop, then continue working in the same ch. loop as follows: 3 s.c., 1 p., 3 s.c., 1 p., 5 s.c., 1 sl.st. in first of the 11 chs., thus forming one clover leaf, ch. 21, turn, sk. 10 chs. next to hook, 1 sl.st. in next ch. to form a ch. loop, repeat from \* once more, joining the first p. with the last p. of the previous clover leaf, work another clover leaf, joining the last p. with the first p. of the first clover leaf, then ch. 10, 1 sl.st. in first ch. of the beginning. Now work 10 s.c. around each 10 chs. in center of triangle, break thread and secure the end.

#### PICOT BEADING

Start with a chain the length of wire to be covered.

**1st Row**—Sk. 1 ch. next to hook, 1 s.c. in each of the next two chs., \* 1 p., 1 s.c. in each of the next three chs., repeat from \* across.

**2d Row**—Work like first row in other side of the

foundation chain so that the ps. are exactly opposite to those of the first row.

For the picot beading points around the top of the shade work six inches of the beading, then sew the points with needle and silk thread.

**ROSE**

Start with ch. 60, sk. 3 chs. next to hook, 1 d.c. in each of the next two chs., 1 t.r.c. in next st., then 2 t.r.c. in each of the next three sts., 1 t.r.c. in next st., 2 d.c. in next st., 1 s.c. in next st., \* 2 d.c. in next st., 1 t.r.c. in next st., 2 t.r.c. in each of the next three sts., 1 t.r.c. in next st., 2 d.c. in next st., 1 s.c. in next st., repeat from \* five times more, so that there are seven petals in all.

Gather along the edge, draw together and twist, thus forming the rose.

Wind the wire frame with the Old Rose seam binding (for directions see page 5).

Stretch the 32x32-inch Old Rose Jap silk over top of wire frame, pinning it very close to the top horizontal wire, then sew securely. Turn silk back on the right side and sew again, then trim edge close to the wire.

Sew up seam of the two 5x36-inch pieces and stretch and sew securely on the two horizontal wires.

Now stretch the 31½x31½-inch piece of Pink chiffon over top of shade to upper horizontal wire and sew in same manner as silk.

Sew up the Old Rose flounce seams and have the bottom edge picoted.

Gather top of flounce and attach to bottom wire.

Sew on the picot beading on short vertical wires and around bottom wire, covering edge of flounce.

Have each of the three 12x40-inch pieces of Pink chiffon picoted at the bottom edge, then attach and drape to the top horizontal wire across four sections as illustrated. Sew on the picot beading neatly on all wires, attach the triangle motifs, the points around the center and the roses, then sew on wooden beads as illustrated.

**Oval Lampshade No. 1436**

BOUDOIR MODEL

Materials required:

Wire Frame No. 44, 12 inches.

Light Blue Satin, 7½x30½ inches.

Light Blue Seam Binding, 4 yards.

ROYAL SOCIETY Sweater Twist No. 565 Rosebud, 1 spool.

Steel Crochet hook No. 6. Amber Crochet Hook No. 5.

ROYAL SOCIETY Celesta

No. 1114 Yellow, 1 skein.	No. 1313 Pink, 2 skeins
No. 1116 " 1 "	No. 1390 Lavender, 1 "
No. 1315 Pink, 1 "	No. 1392 " 1 "

Chenille needle No. 17.

With amber crochet hook No. 5 start with ch. 98, 1 sl.st. in first ch. to join a ring.

**1st Row**—\* Ch. 5, sk. next three chs., 1 s.c. in next ch. to form a ch. loop, repeat from \* 23 times more, then ch. 5, 1 s.c. in third of first five chs. to close the row.

**2d Row**—\* Ch. 5, 1 s.c. in third of next five chs., repeat from \* to end of row.

Work nine more rows like second row.

**12th Row**—\* Ch. 2, 1 s.c. in third of next five chs., repeat from \* to end of row.

Picot Edging.—For edging around bottom wire with steel crochet hook No. 6 make a chain 28 inches long.

**1st Row**—Sk. 1 ch. next to hook, then work 1 s.c. in each stitch of the foundation chain, turn.

**2d Row**—Ch. 1, then 1 s.c. in each of the first two s.c. of previous row, \* 1 p., then 1 s.c. in each of the next three s.c., repeat from \* to end of row.

Work one piece of the picot edging 24 inches long around the top wire, and four pieces each 7½ inches long for vertical wire in front and back of shade.

Rose.—With steel crochet hook No. 6 start with ch. 18.

**1st Row**—Sk. 1 ch. next to hook, then work 1 s.c. in each of the next 17 chs.

**2d Row**—Ch. 1, turn, 1 s.c. in each st. of the previous row, taking up the double thread.

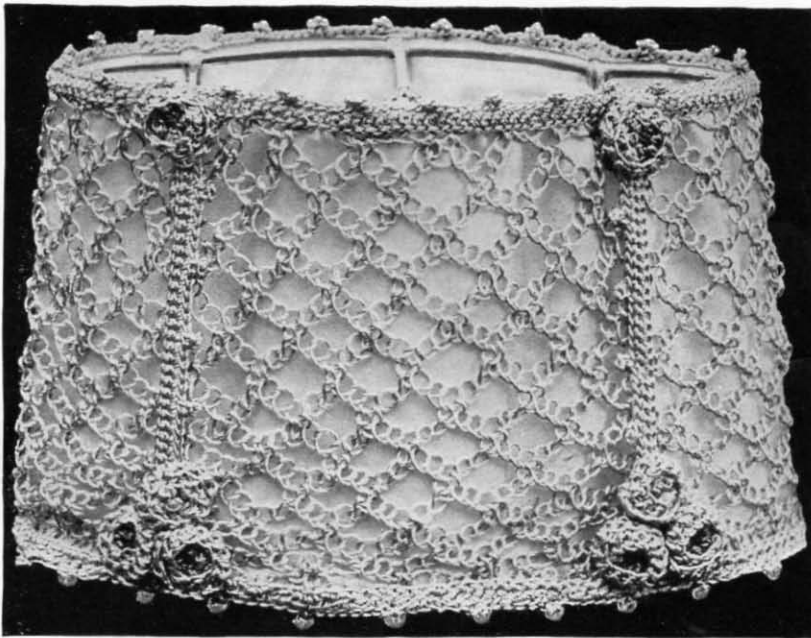
**3d Row**—Like second row. Break thread, leaving an end 10 inches long. Now gather down the one side, along the bottom and up the other side of the crocheted piece, draw together and twist, thus forming the rose.

With Pink Celesta No. 1313 and chenille needle No. 17 make five Frenchknots, with the thread wound three times around the needle, then make one Frenchknot in center with Pink Celesta No. 1315. Work eight roses with Pink Frenchknot centers, four roses with Yellow and four roses with Lavender centers.

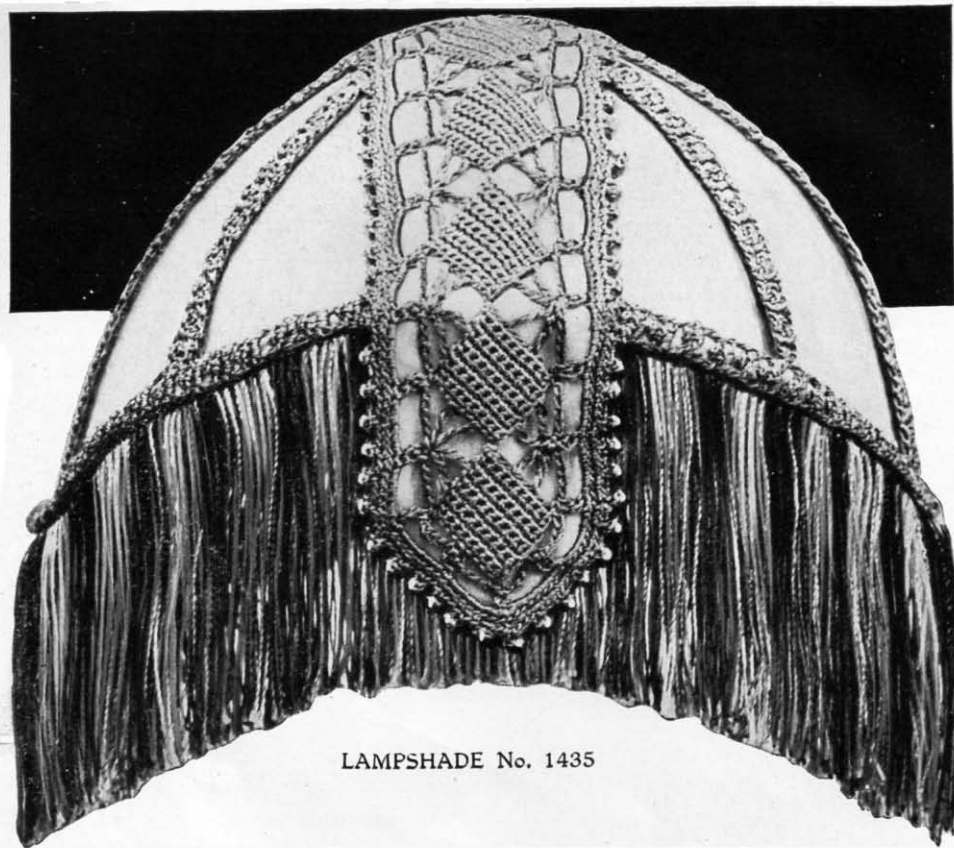
Wind the wire frame with the Light Blue seam binding (for directions see page 5).

French seam the Blue satin, then pin closely to the bottom wire so that the seam is on a front or back vertical wire, stretch and pin closely to top wire, then sew securely. Turn silk back on right side and sew again, then trim edges close to wires.

Attach the large mesh Rosebud crochet to bottom and top wires of the shade, then sew on the picot edging and roses as illustrated.



LAMP SHADE No. 1436



LAMP SHADE No. 1435

## Lampshade No. 1435

LIBRARY MODEL  
Materials required:

Wire Frame Boat, 12 inches.  
American Beauty Taffeta, 18½x18½ inches.  
Tan Georgette, ¼ yard.  
American Beauty Seam Binding, 7 yards.  
ROYAL SOCIETY Sweater Twist  
No. 600 American Beauty, 2 spools.  
No. 555 Buff, 1 spool.  
Steel crochet hook No. 7.

With American Beauty Sweater Twist work insertion across lampshade and the narrow beading, following instructions of letter F insertion and beading, working ten blocks for length of the insertion.

Fringe.—With American Beauty Sweater Twist make a chain 45 inches long.

**1st Row**—Sk. 1 ch. next to hook, then work with three threads (two American Beauty and one Buff) 1 s.c. in next ch., \* insert hook in next ch., then wind the three threads with left hand around a five-inch piece of cardboard, throw threads over hook and draw through ch., throw thread over and draw through the two loops on the hook, thus working 1 s.c. Repeat from \* to end of row. Cut loops to form the fringe.

Wind the wire frame with the American Beauty seam binding (for directions see page 5).

Stretch the American Beauty taffeta over top of wire frame, pin close to the bottom wire, then sew securely. Turn silk back on the right side and sew again, then trim edge close to the wire.

Now sew on fringe around the edge of the bottom wire.

With Tan Georgette line the wide insertion and beading, attach to lampshade as illustrated, covering all wires.

## Lampshade No. 1444

DESK MODEL

Materials required:

Wire Frame No. 6, 6x6 inches.  
Orange Jap Silk, 22x22 inches.  
Purple Georgette, 6x20 inches 1 piece.  
" 4 inches square, 4 pieces.  
" 3x40 inches, 1 piece.  
Orange Seam Binding, 6 yards.  
Small round Old Gold Wooden Beads, 1 string.  
Eight Oval Old Gold Wooden Beads.  
ROYAL SOCIETY Celesta No. 1394 Purple, 9 skeins.  
No. 1393 3  
No. 1116 Yellow, 2  
No. 130 Orange, 1 skein.  
No. 1471 Green, 1

Steel crochet hook No. 5.  
Chenille needle No. 17.

### NARROW BINDING

With Purple Celesta No. 1394 start with ch. 4, sk. 3 chs. next to hook, 1 d.c. in next st., \* ch. 3, turn, sk. first d.c., 1 d.c. in next st., repeat from \* for required length of wire to be covered.

### PANSY

With Purple Celesta No. 1393 start with one loose ch., ch. 1, then work in the first loose ch. 1 s.c., 5 d.c., 1 s.c., 5 d.c., 1 s.c., 5 d.c., draw the No. 1116 Yellow Celesta through the last two loops, then work in same first ch. 1 s.c., 5 d.c., 1 s.c., 5 d.c., then 1 sl.st. in first s.c., break thread and secure the end.

With the No. 1370 Orange Celesta and chenille needle No. 17 work long and short stitches in center of flower, then finish the center with a Frenchknot worked with the Green Celesta No. 1471, with the thread three times wound around the needle.

LAMPSHADE No. 1444—Continued

MEDALLION IN CENTER ON TOP OF SHADE

With Purple Celesta No. 1394 start with ch. 10, join to ring.

**1st Row**—Ch. 1, 16 s.c. in ring, 1 sl.st. in first s.c. to close row.

**2d Row**—Ch. 1, 1 s.c. in same first s.c., \* ch. 5, sk. 1 s.c., 1 s.c. in next s.c., repeat from \* six times more, ch. 5, 1 sl.st. in first s.c.

**3d Row**—Ch. 1, \* then work around next ch. loop 1 s.c., 5 d.c., 1 s.c., repeat from \* seven times more, break thread and secure the end.

Wind the wire frame with the Orange seam binding (for directions see page 5).

Stretch the Orange Jap silk tightly over top of wire frame to bottom wire, working four seams on four vertical wires. Sew securely. Turn silk back on the right side, sew again, then trim edge close to the wire.

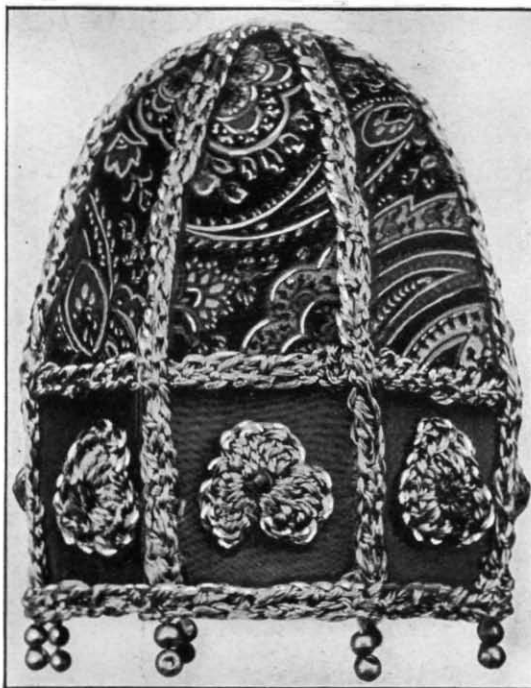
Have the 6x20-inch and the 3x40-inch piece Purple Georgette picoted on one side and around each of the four-inch squares. (The finished picoted square should be 3½x3½ inches).

Attach picoted edge of the 20-inch piece of Georgette to vertical wires around the top five inches from the bottom wire, then pin and sew securely to bottom wire.

Cut each of the picoted squares through center diagonally to obtain eight triangles. Sew points of triangles on vertical wires, gather bias edges and fasten around the top. Now sew on medallion to center top, covering the Georgette edges.

Gather flounce and attach to bottom wire.

Sew on the narrow beading, the pansies and wooden beads as illustrated.



Lampshade No. 1445

SMALL MODEL TO COVER BULB

Materials required :

- Wire Frame No. 9 3½x3½ inches.
- American Beauty Taffeta, 13x14 inches.
- Persian Chiffon, 14x4½ inches.
- American Beauty Seam Binding, 4 yards.
- 16 small round Old Gold Wooden Beads.
- ROYAL SOCIETY Celesta No. 1393 Purple, 8 skeins.
- No. 1116 Yellow, 1 skein.
- Steel crochet hook No. 5.
- Chenille needle No.17.

NARROW BEADING

With Purple Celesta No. 1393 start with ch. 4, sk. 3 chs. next to hook, 1 d.c. in next st., \* ch. 3, turn, sk. first d.c., 1 d.c. in next st., repeat from \* for the required length of wire to be covered.

FLOWER

With Purple Celesta start with one loose ch., ch. 1, then work in the first loose ch. 1 s.c., 5 d.c., 1 s.c., 5 d.c., 1 s.c., 5 d.c., then 1 sl.st. in first s.c., break thread and secure the end.

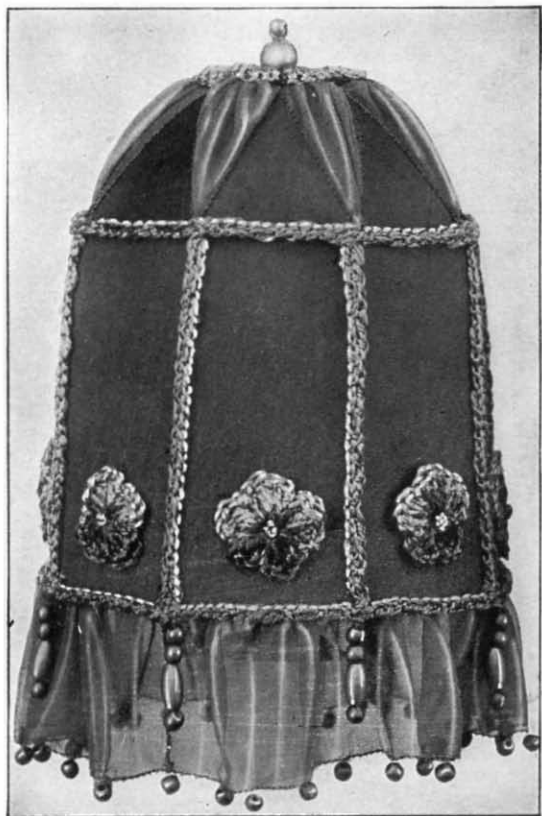
Wind the wire frame with the American Beauty seam binding (for directions see page 5).

Stretch the American Beauty taffeta tightly over top of wire frame to bottom wire, making four seams on four vertical wires. Sew securely.

Turn silk back on the right side, sew again, then trim edge close to wire.

Have the Persian chiffon picoted on one side. Attach picot edge to vertical wires 1¾ inches from the bottom wire and stretch smoothly over top.

Sew on the narrow beading, flowers and wooden beads as illustrated.



LAMPSHADE No. 1444



## Lampshade No. 1440

MUSIC ROOM MODEL

### Materials required:

- Wire Frame No. 7, 22x22 inches.  
 Yellow Jap Silk,  $1\frac{1}{8}$  yards cut as follows:  
     31x31 inches, 1 piece.  
     4 $\frac{3}{4}$ x36 inches, 2 pieces.  
 Jade Green Georgette,  $1\frac{1}{8}$  yards cut as follows:  
     31x31 inches, 1 piece for top.  
     4 $\frac{3}{4}$ x36 inches, 2 pieces for band.  
     9x40 inches, 3 pieces for flounce.  
 Yellow Georgette,  $\frac{3}{4}$  yards cut as follows:  
     9x40 inches, 3 pieces for flounce.  
 Yellow Seam Binding, 18 yards.  
 Small round Old Gold Wooden beads, 4 strings.  
 112 large round Old Gold Wooden Beads.  
 ROYAL SOCIETY Sweater Twist No. 555 Buff, 4 spools.  
     No. 590 Orange, 1 spool.  
 Steel crochet hook No. 6.

### SCROLL MOTIF

With Buff silk start with ch. 24.

**1st Row**—Sk. five chs. next to hook, 1 d.c. in next ch., ch. 2, 1 d.c. in same ch., ch. 2, 1 d.c. in same ch., ch. 2, 1 d.c. in next ch., \* ch. 2, sk. 1 ch., 1 d.c. in next ch., repeat from \* seven times more, then ch. 2, 1 d.c. in next st., ch. 2, 1 d.c. in same st., ch. 2, 1 d.c. in same st., ch. 5, 1 sl.st. in same st.

**2d Row**—Ch. 1, turn, work around next five chs. 2 s.c., 1 p., 3 s.c., 1 p., 2 s.c., then 1 s.c. in next d.c., \* 1 p., 2 s.c. in next mesh, 1 s.c. in next d.c., repeat from \* 13 times more, 1 p., now work around next five chs. 3 s.c., 1 p., 3 s.c., 1 p., 2 s.c., sk. next st. in which the three d.c. sts. were worked into, 1 s.c. in next st., 1 s.c. in each of the next 16 sts., 1 sl.st. in first s.c. to close the row, break the thread and secure the end.

With the Orange silk make a chain about 4 $\frac{1}{2}$  inches long. Thread end of chain in coarse needle or bodkin and run through row of open meshes over and under d.c. sts. like in darning st., thus completing one scroll.

Work and join two scroll motifs for each section of the straight band around the bottom, and three for each section of the top as illustrated.

### INSERTION

With Buff silk start with ch. 7, sk. 6 chs. next to hook, 1 d.c. in first st., ch. 2, 1 d.c. in same st., \* ch. 5, turn, 1 d.c. in mesh between the two d.c. just made, ch. 2, 1 d.c. in same mesh, repeat from \* for required length of wire to be covered.

**Heading**—Ch. 1, 1 s.c. in mesh around d.c. just made, \* ch. 1, then 5 d.c. around next five chs., ch. 1, 1 s.c. in mesh around next d.c., repeat from \* all along the edge on both sides of the beading.

With the Orange silk make a chain the length of the

insertion and run through open meshes to harmonize with scroll.

#### ROSETTE

Work the insertion with the heading on one side only the length of six small scallops, join, gather center, then run the Orange chain through open meshes, thus forming the rosette.

Wind the wire frame with the Yellow seam binding (for directions see page 5).

Stretch the 31x31-inch Jap silk over top of wire frame, pinning it very close to the top horizontal wire, then sew securely. Turn silk back on the right side and sew again, then trim edge close to wire.

Join the two  $4\frac{3}{4}$  Jap silk pieces, then stretch and sew to the two horizontal wires.

Now stretch and sew on the Jade Green Georgette in same manner.

Sew up the Yellow and Jade Green flounce seams and have the two picoted together at the bottom edge.

Gather top of flounce and attach to bottom wire.

Sew on the insertion neatly on all wires, covering the edge of the flounce.

Attach the scroll motifs and rosettes, then sew on the wooden beads as illustrated and finish the center top with a rosette.

This Lampshade may also be finished with a fringe  $8\frac{1}{2}$ -inches deep.

Instructions for making fringe see page 10.

It will take about 6 spools of Royal Society Sweater Twist, 4 spools of No. 555 Buff and 2 spools of No. 590 Orange.

## Lampshade No. 1446

#### SCREEN MODEL

#### Materials required:

Wire Frame Screen,  $10\frac{1}{2}$  inches.  
Old Blue Taffeta,  $8 \times 17\frac{1}{2}$  inches.  
Tan Georgette,  $8 \times 17\frac{1}{2}$  inches.  
Old Blue Seam Binding, 5 yards.  
ROYAL SOCIETY Sweater Twist No. 555 Buff, 1 spool.  
Two small Old Gold Wooden Beads.  
Steel crochet hook No. 6.

With Buff Sweater Twist and steel crochet hook No. 6 follow instructions for butterfly motif, letter H, page 35.

#### PICOT EDGING

Make a chain for length required.

**1st Row**—Sk. 1 ch. next to hook, then work 1 s.c. in each st. of the foundation chain.

**2d Row**—1 s.c. in each of the first two s.c. of the previous row, \* 1 p., then 1 s.c. in each of the next three s.c., repeat from \* to end of row.

Wind the wire frame with the Blue seam binding (for directions see page 5).

Stretch the Old Blue taffeta over the wire frame, pinning it very close, then sew securely.

Turn back silk on the right side, sew again, then trim the edges close to the wire.

Stretch and sew on the Tan Georgette in the same manner.

Sew on the narrow picot edge neatly and attach the butterfly as illustrated, then sew on the two small round wooden beads to indicate the eyes.



LAMPSHADE No. 1446





## Lampshade No. 1442

LIVING ROOM MODEL

### Materials required:

Wire Frame No. 5, 10x10 inches.  
 Old Rose Seam Binding, 9 yards.  
 Old Rose Jap Silk, 24x24 inches.  
 Jade Green Georgette, 24x24 inches for top,  
 3x40 inches for flounce.  
 Small round Old Gold Wooden Beads, 2 strings.  
 Ten oval Old Gold Wooden Beads.  
 ROYAL SOCIETY Celesta No. 1481 Jade, 17 skeins.  
 Steel crochet hook No. 4.  
 Amber crochet hook No. 5.

### SQUARE MEDALLION

**1st Row**—Start with ch. 2, sk. 1 ch. next to hook, 1 s.c. in first ch., \* 1 p., 1 s.c. in same first ch., repeat from \* twice more, 1 p., 1 sl.st. in first s.c. to close the row.

**2d Row**—Ch. 13, 1 tr.c. in next s.c. of the previous row, ch. 9, 1 tr.c. in next s.c., ch. 9, 1 tr.c. in next s.c., ch. 9, 1 sl.st. in fourth of next 13 ch. to close row.

**3d Row**—Ch. 1, 1 s.c. in same fourth ch. of previous row, then 1 s.c. in each of the next four chs., \* 3 s.c. in next ch. to form the corner, then 1 s.c. in each of the next nine sts., repeat from \* twice more, then 3 s.c. in next st. and 1 st. in each of the next four sts., 1 sl.st. in first s.c.

**4th Row**—Ch. 4, 1 sl.st. in first ch. to form a p., 1 sl.st. in each of the next three s.c., taking up the top

thread only, 1 p., 1 s.c. in each of the next three sts., 1 p., 1 sl.st. in same st. to form the corner, \* 1 sl.st. in each of the next two sts., 1 p., 1 sl.st. in each of the next three sts., 1 p., sk. next st., 1 sl.st. in each of the next three sts., 1 p., 1 sl.st. in each of the next three sts., 1 p., 1 sl.st. in same st., repeat from \* twice more, then 1 s.c. in each of the next two sts., 1 p., 1 sl.st. in each of the next two sts., break thread and secure end.

### NARROW BEADING

With amber crochet hook No. 5 and the Celesta taken double make a loose chain for the required length of wire to be covered.

For scallop around top make a loose chain 3 inches long.

Wind the wire frame with the Old Rose seam binding (for directions see page 5). Stretch the Old Rose Jap silk tightly over top of wire frame to bottom wire, making five seams on five vertical wires. Sew securely.

Turn silk back on the right side and sew again, then trim edge close to the wire.

Stretch and sew on the Jade Green Georgette in the same manner.

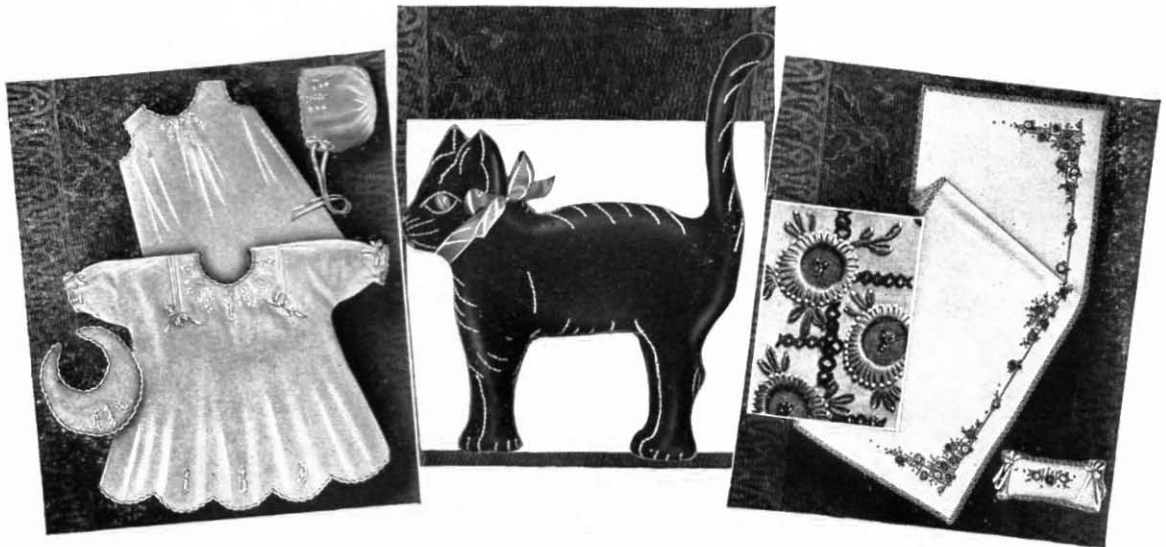
Have the 3x40-inch piece of Georgette for flounce picoted at the bottom edge and sew up seam.

Gather top of flounce and attach bottom wire.

Sew on the narrow beading neatly on all vertical wires and around bottom wire, covering edge of flounce.

Attach the square medallions and scallop around the top, then sew on the wooden beads as illustrated.

## Embroidery Package Outfits of Quality



To women who appreciate values the name Royal Society has long been synonymous with style and highest quality. They know there is no line of embroidery packages which offer as many advantages in suitable materials, practical items, correct and sufficient embroidery thread, workmanship and completeness.

Added to these desirable features, the economy represented in the made-up articles of apparel in Royal Society Packages is of importance to those who MUST or are inclined to consider costs.

Even in putting aside the cost of time and effort consumed in purchasing materials, planning, designing, making, etc., one can readily compare the unusual values in Royal Society Packages with actual costs of similar quality materials in average communities, AND THINK WHAT A CONVENIENCE TO HAVE "Everything in the package, clean and intact," ready for the simple embroidery.

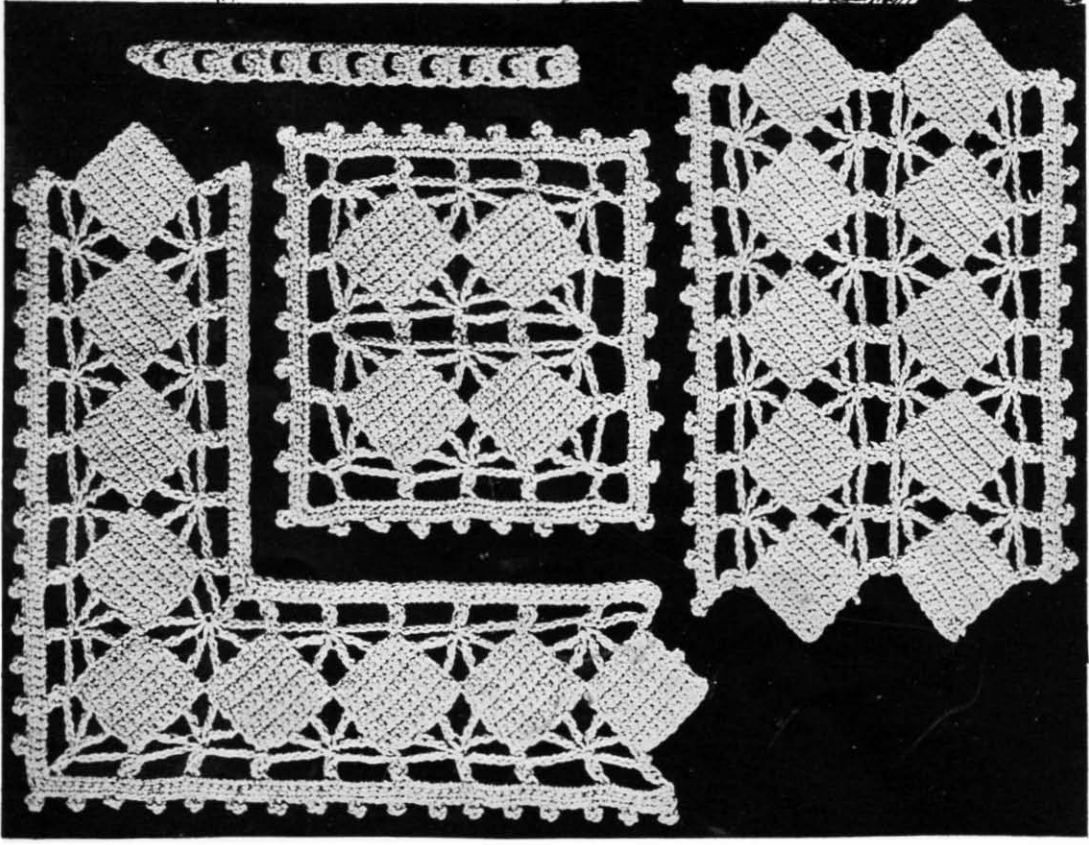
STYLISH DRESSES FOR CHILDREN, BABY ARTICLES, LADIES' DAINY UNDERGARMENTS, NEGLIGES, BOUDOIR CAPS, TEA AND FUDGE APRONS, LUNCHEON AND VANITY SETS, NAPKINS, CARD TABLE COVERS, TOWELS, PILLOW TUBING, NOVELTY HANDKERCHIEFS, DRESSER SCARFS, CENTERPIECES, LAUNDRY BAGS, TIE RACKS.

THE NEW "TUMBLEDUMS"—Kitty and Jumbo—have joined the "Tumbledum" family and they are the cutest, most delightful articles for children. They cost only 50c each, but will give a wealth of happiness to the kiddies.

### Art Needlework Materials

From the Royal Society lines of embroidery and crochet materials you may choose a thread particularly suited to the kind of work you have in mind, feeling assured of utmost durability and a quality that never changes.

There is an especially made Royal Society thread for every kind of hand embroidery or crochet in White and complete lines of Fast Colors. Also Boiling Dye Colors in short skeins that withstand severe laundering.



Crochet Directions on opposite page

# Design F

WIDE INSERTION BEADING

SQUARE WITH BLOCK PATTERN EDGE WITH BLOCK PATTERN

## F—WIDE INSERTION

Materials required:

ROYAL SOCIETY Crochet Ecu 1010, size 3, 1 ball  
For nine inches of insertion.  
Steel crochet hook No. 7.

Block Pattern—Start with Ch. 11.

**1st Row**—Sk. first ch. next to hook, 1 s.c. in each of next chs., turn.

**2d Row**—Ch. 1, then 1 s.c. in each of 10 s.c. of previous row. Work eight more rows like the second row, working back and forth to complete one block.

Ch. 11, turn, then repeat from first row for next block. Continue working block pattern for required length.

### HEADING

**1st Row**—Work in corner of first block 1 s.c., 1 p., 1 s.c., \* ch. 5, throw thread twice around hook, draw a loop through fourth st. of block, thread over, through 2 sts., thread over, through 2 sts., throw thread twice around hook, sk. next two sts. of block, draw a loop through third st., thread over, through 2 sts., thread over, through 2 sts., throw thread twice around hook, sk. last three sts. and first three sts. of next block and draw a loop through next st., thread over, through 2 sts., thread over, through 2 sts., throw thread twice around hook, sk. 2 sts., draw a loop through third st., thread over, through 2 sts., thread over, through 2 sts., now throw thread over and through all five loops on hook. Ch. 4, 1 sl.st. in st. just worked to form p., ch. 5, then work in corner of next block 1 s.c., 1 p., 1 s.c., repeat from \* across.

**2d Row**—1 s.c. in first p. of previous row, \* ch. 6, 1 s.c. in next p., repeat from \* across.

**3d Row**—1 s.c. in first s.c. of previous row, \* ch. 6, 1 s.c. in next p., repeat from \* across.

**4th Row**—1 s.c. in each st. of previous row.

Repeat first row of heading on opposite side of blocks. Now work another strip of blocks like the first one and repeat the four rows of the heading.

Repeat the first row of heading on opposite side, joining strips in working the ps. as follows: Work 1 s.c. in corner of first block, \* ch. 2, drop st. from hook, insert hook in p. opposite and draw loop through, ch. 2, 1 s.c. in two loops of s.c. to form a p., 1 s.c. in same corner, ch. 5, 4 tr.c. drawn together at top, 1 p. joining with opposite p., ch. 5, 1 s.c. in corner of next block, repeat from \* across.

The wide insertion was used for a 22x45-inch Tan Linen Scarf.

Finish ends of Scarf with a picot edge as follows: Make a chain for required length.

**1st Row**—Work 1 s.c. in each st. of the foundation ch., turn.

**2d Row**—Ch. 1, 1 s.c. in first s.c. of previous row, \* 1 p., 1 s.c. in each of next three s.c., repeat from \* to end of row.

Knot in a fringe of ten strands and ten inches long into every second picot across.

## F—SQUARE WITH BLOCK PATTERN

Materials required:

ROYAL SOCIETY Crochet Ecu 10.0, size 3, 2 balls  
For three square medallions.  
Steel crochet hook No. 7.

Block Pattern—Start with ch. 11.

**1st Row**—Sk. first ch. next to hook, 1 s.c. in each of next ch., turn.

**2d Row**—Ch. 1, then 1 s.c. in each of 10 s.c. of previous row. Work eight more rows like the second row, working back and forth to complete one block.

Ch. 11, turn, then repeat from first row for next block. Then work heading same as insertion, working around entire square.

**Around Square**—Start on side at point of block, ch. 3, \* 1 s.c. in point of block, ch. 6, 1 d.t.r.c. in ps. between two blocks, ch. 6, 1 s.c. in next p. at point of block, ch. 6, 1 d.c. in next p., ch. 7, 1 d.c. in same st. as d.c. just worked, ch. 6, 1 s.c. in next p., ch. 6, 1 s.c. in next p., ch. 6, 1 s.c. in next p., ch. 6, 1 d.c. in next p., ch. 7, 1 d.c. worked in same st. as last d.c., ch. 6, repeat from \* around.

**Next Row**—\* 1 s.c. in s.c. of previous row, 6 s.c. around ch. 6 of previous row, 1 s.c. in d.t.r.c. of previous row, 6 s.c. around next loop of ch., 1 s.c. in next s.c., 6 s.c. around next loop of ch., 1 s.c. in d.c. of previous row, 11 s.c. worked around ch. 7 of previous row. This is corner of square. 1 s.c. in next d.c., 6 s.c. around next loop of ch., 1 s.c. in s.c., 6 s.c. around loop of ch., 1 s.c. in d.c., 11 s.c. around ch. 7, next corner, 1 s.c. in next ch., 6 s.c. around next loop, repeat from \* around.

Finish square with \* 1 s.c. in each of the next three s.c., 1 p., repeat from \* around, working a p. on each corner.

The square block medallion and block edging were used for a 48-inch square Tan Linen Table Cover.

## F—EDGE WITH BLOCK PATTERN

Materials required:

ROYAL SOCIETY Crochet Ecu 1010, size 3, 1 ball  
For fifteen inches of edge.  
Steel crochet hook No. 7.

Block pattern is worked same as insertion, but if corner is desired join block to side of previous block, then repeat for desired length and then work next block to side for next corner. Work around entire corner same as heading on insertion, only finishing outside edge with picots, 1 s.c. in each of three s.c. of previous row, 1 p. Repeat this corner for any piece desired.

The block edging of the table cover finished on both sides with a picot edge and worked with Royal Society Sweater Twist forms the insertion across the Lampshade No. 1435.

## F—BEADING

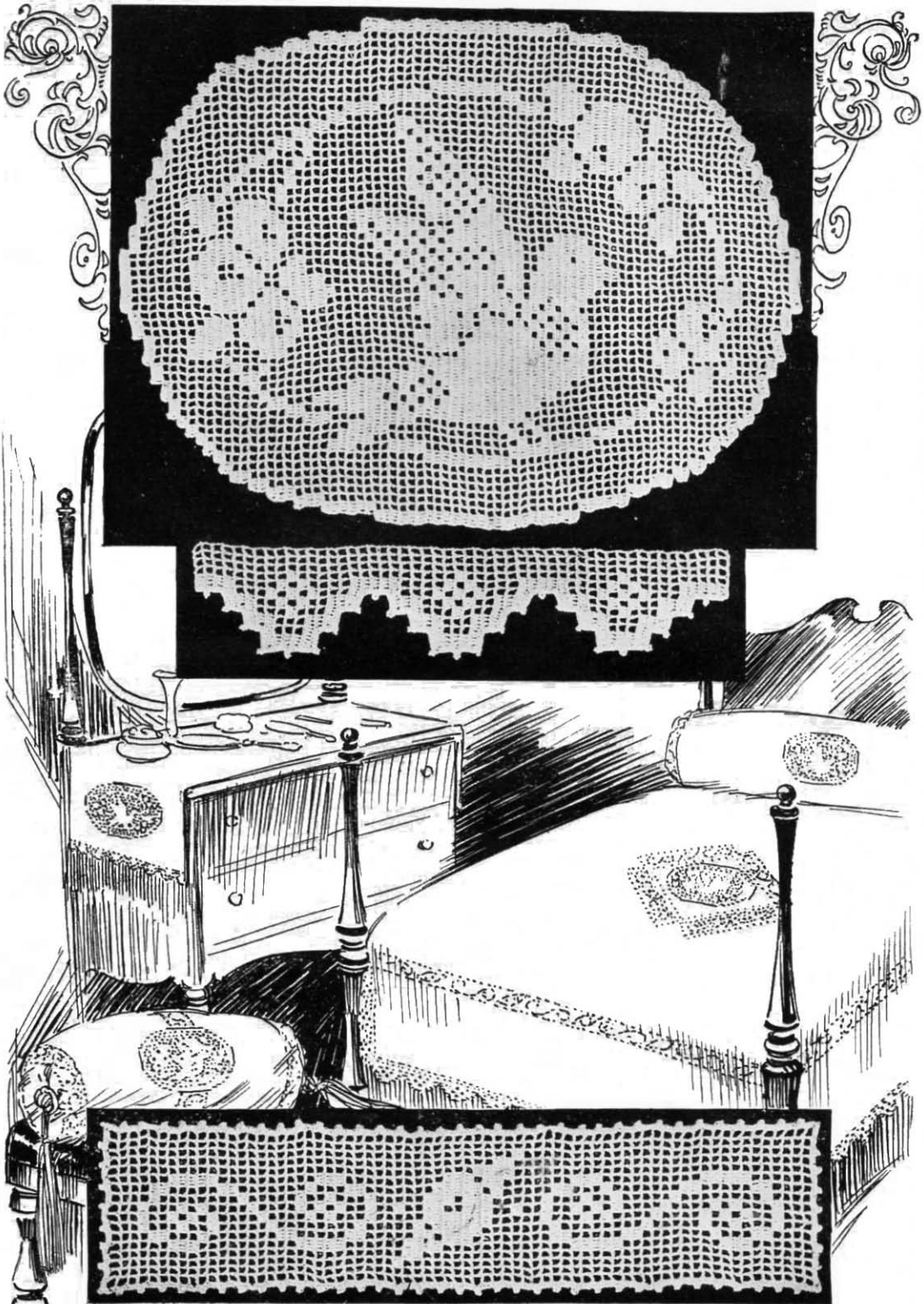
**1st Row**—Ch. 8, sk. seven chs. next to hook, 1 d.c. in first ch. to form a mesh, turn.

**2d Row**—Ch. 1, 1 s.c. in first d.c., of previous row, then 1 s.c., 1 p., 1 s.c. in mesh around next two chs., 1 s.c. in next st., turn.

**3d Row**—Ch. 5, 1 d.c. in last d.c. of previous row to form a mesh, turn.

Repeat second and third row for required length.

F Beading worked in Sweater Twist was also used for Lampshade No. 1435.



Crochet Directions  
on opposite page

**Design B** FILET CROCHET OVAL, BIRD DESIGN  
EDGE INSERTION

# B—FILET CROCHET OVAL BIRD DESIGN

Materials required:  
 ROYAL SOCIETY Cordichet White, size 20, 2 balls.  
 For one 12-inch oval  
 Steel crochet hook No. 10.

Start at letter A and work to letter B, then continue working back and forth, following the diagram. A row of s.c. and ps. may be worked around edge of oval if desired.

# B—INSERTION

One ball for 12 inches of rose insertion.

Start at letter A, continue following diagram, then work p. around edge.

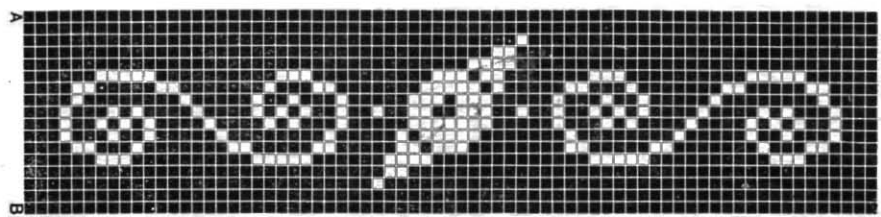
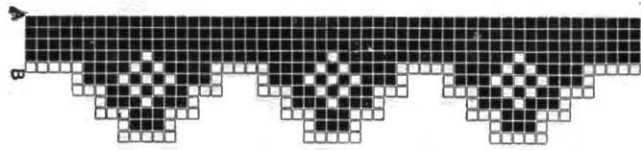
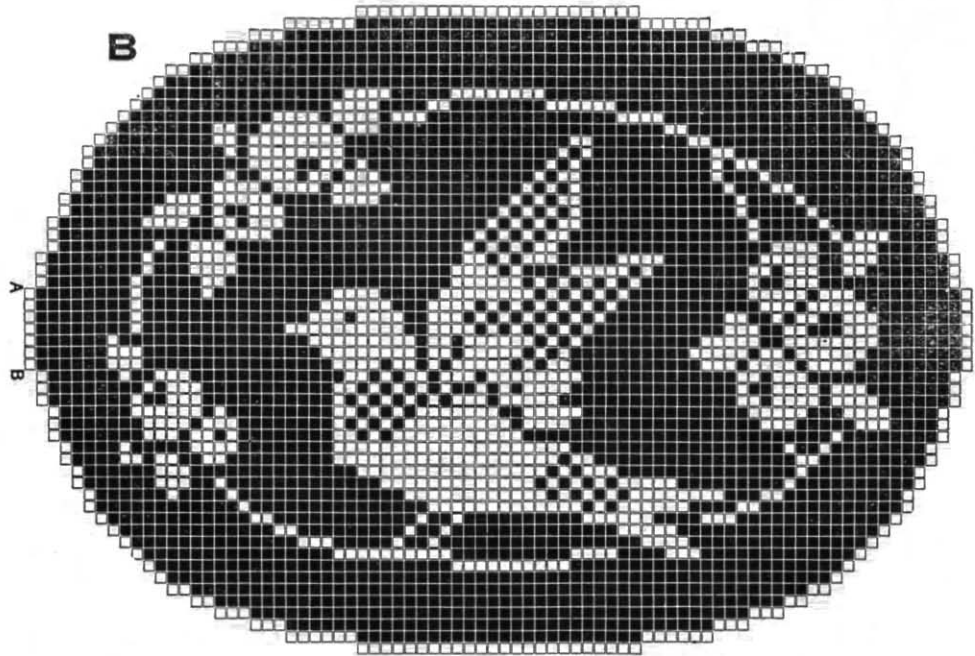
Filet Crochet Oval Motive, Insertion and Edging were used for Bedspread, Bolster, Scarf and Oblong Pillow as illustrated. They may be mounted on Scrim, Linen or Cotton.

Bedspread for single size bed measures 72x96-inches; Bolster 24x54-inches; Scarf 18x48-inches; Oblong Pillow 16x27-inches.

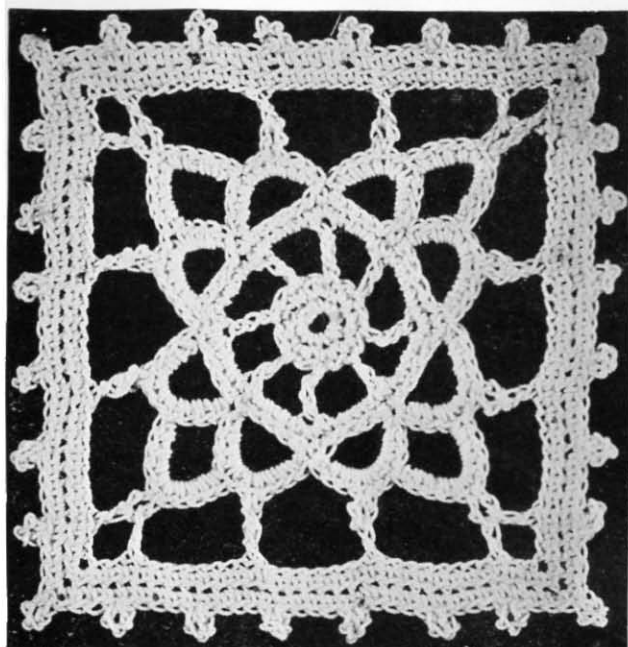
# B—EDGE

One ball for 12 inches of scallop edge.

Start at letter and follow diagram, then work row of ps. Around scallop, 1 p., 4 s.c. for required length.



General directions for Filet Crochet on page 3.



# N SQUARE MEDALLION

Materials required:  
ROYAL SOCIETY Cordichet White, size 3, 1 ball  
For three square medallions.  
Steel crochet hook No. 7.

**1st Row**—Ch. 3, join to ring. 8 s.c. worked in ring.  
**2d Row**—2 s.c. in each s.c. of previous row (16 s.c.)  
**3d Row**—Ch. 6, sk. 1 s.c. in previous row. 1 t.r.c. in next st., \* ch. 3, sk. 1 s.c. in previous row, 1 t.r.c. in next st., repeat from \* around.  
**4th Row**—3 s.c. in first space. 3 s.c. in t.r.c. of previous row, 3 s.c. in next space. 1 s.c. in next t.r.c., 3 s.c. in next space, 3 s.c. in next t.r.c., 3 s.c. in next space. 1 s.c. in next t.r.c., 3 s.c. in next space. 3 s.c. in next t.r.c., 3 s.c. in next space. 1 s.c. in next t.r.c., 3 s.c. in next space, 3 s.c. in next t.r.c., 3 s.c. in next space. sl.st., join. turn (this forms square).  
**5th Row**—Sl.st. to corner. turn. \* ch. 5, sk. four sts. of previous row, 1 s.c. in s.c. of previous row. ch. 5, sk. four sts. of previous row. 1 s.c. in center s.c. on corner, turn, 4 s.c., 1 p., 6 s.c. worked around loop of ch., 4 s.c. around next loop of ch., turn, ch. 5, 1 s.c. in fifth s.c. of

previous scallop worked. turn. 6 s.c. 1 p., 4 s.c. worked around loop of ch. Then finish off other scallop 1 s.c., 1 p., 4 s.c. worked around same loop of ch. of first scallop (this forms three scallops on one side of square), sl.st. to next corner, repeat from \* around.  
**6th Row**—Start at corner p. ch. 10. 1 d.c. in next p., ch. 7, 1 d.c. in next p., ch. 7, 1 d.c., ch. 5, 1 d.c. all worked in corner p., ch. 7, 1 d.c. in next p. from corner. ch. 7, 1 d.c. in next p., ch. 7, 1 d.c., ch. 5, 1 d.c. all worked in next corner p., ch. 7, 1 d.c. in next p., ch. 7, 1 d.c. in next p., ch. 7, 1 d.c., ch. 5, 1 d.c. worked in next corner p., ch. 7, 1 d.c. in next p., ch. 7, 1 d.c. in next p., ch. 7, 1 d.c. in next corner. ch. 5, join to fourth ch. of ch. 10.  
**7th Row**—1 s.c. in each st., working 3 s.c. in each corner.  
**8th Row**—\* 1 s.c. in each of first four sts., 1 p., repeat from \* around, picking up back st. only. See that 1 p. is on each corner.  
 The medallion was used for a 36-inch White Linen Tea Cloth and Edging G was used around the edge. The medallion was also used for a Silk Sweater, which may be found in the Royal Society Crochet Book No. 20.



LAMP SHADE No. 1434. See description on page 5.

## L—MEDALLION

Materials required:

ROYAL SOCIETY Crochet Ecu 1010, size 3, 1 ball  
For three motifs, circle with point drop.  
Steel crochet hook No. 5.

Ch. 7, join to ring, 16 s.c. in ring, join.

**2d Row**—Ch. 3, sk. 1, \* 1 d.c. in next st., ch. 5, 1 s.c. in second ch. of ch. 5, 1 d.c. in next ch., 1 tr.c. in next ch., 1 d.tr.c. in last ch. of ch. 5 (forming point), sk. 1 s.c. in circle, then repeat from \* around, eight points in all, forming star.

**3d Row**—1 s.c. in point of star, \* ch. 8, 1 s.c. in next point, repeat from \* around. Eight loops of chain in circle.

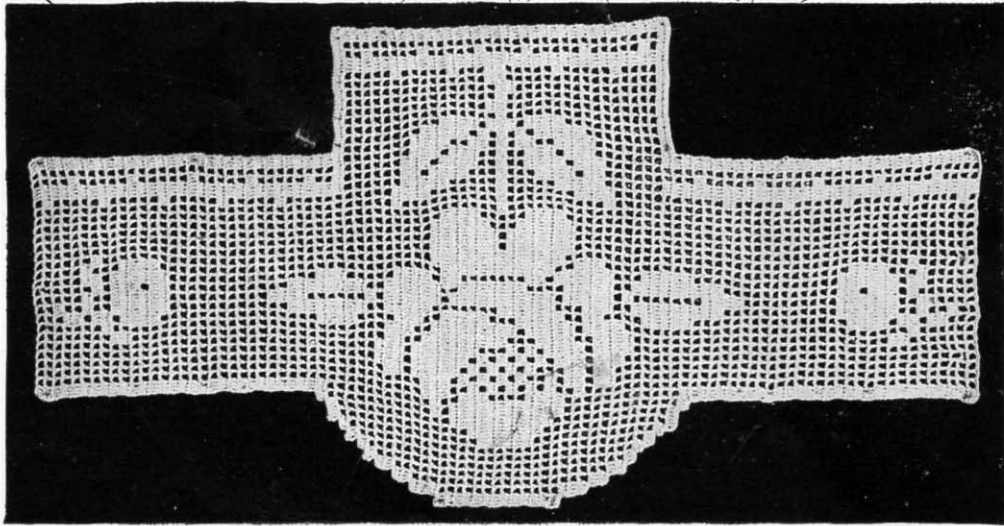
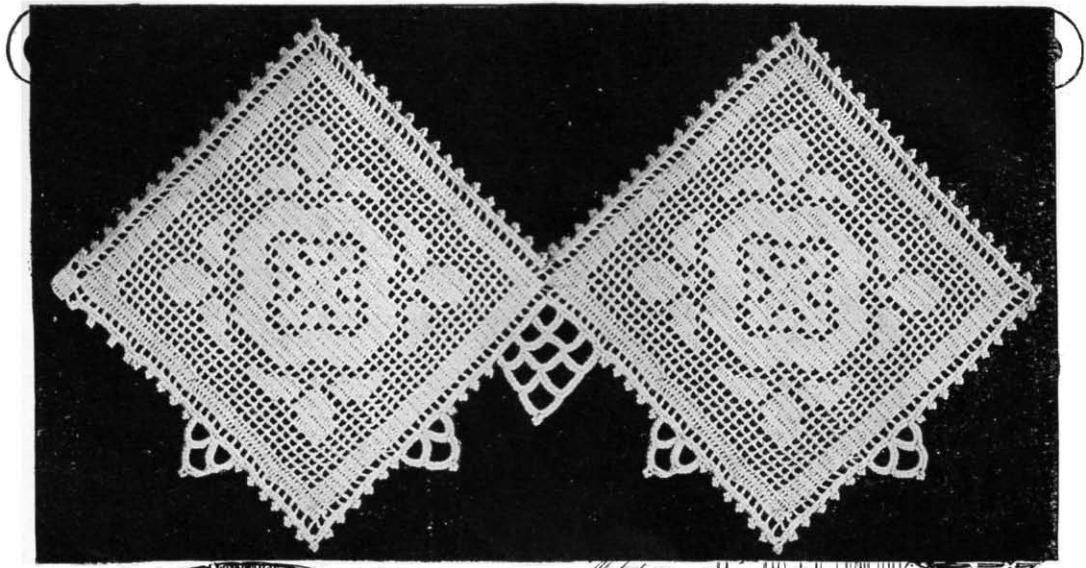
**4th Row**—\* 5 s.c., 1 p., 5 s.c. worked around first loop of ch., 1 p. at point of previous row, repeat from \* around, omitting p. on last point of previous row. Sl.st. across next five sts., then start drop on star.

Ch. 9, sk. first ch., 1 s.c. in next ch., 1 h.d.c., 2 d.c., 2 tr.c., 2 d.tr.c., join with sl.st. in fourth s.c. on scallop, turn, ch. 10, 1 s.c. in point, ch. 10, 1 sl.st. in first st. after five sl.st. on circle, turn, 2 s.c., 1 p., 2 s.c., 1 p., 2 s.c., 1 p., 2 s.c. worked around ch. 10, ch. 10, join to last s.c. made, forming loop, into this loop 8 s.c., 3 p., 7 s.c. into last loop of ch. 2 s.c., 1 p., 2 s.c., 1 p., 2 s.c., 1 p., 2 s.c. This finishes medallion.

This medallion was worked in Royal Society Sweater Twist and used for the Lampshade No. 1434 as illustrated.

It may be worked in crochet sizes, and used on Linen or Scrim for various articles such as Scarfs, Pillows, etc





Crochet Directions  
on opposite page

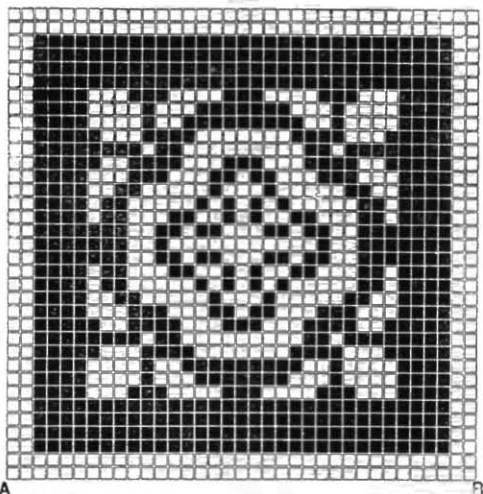
**Design A**

FILET CROCHET MOTIVE  
ROSE DESIGN

**Design E**

SQUARE FILET  
MEDALLION

E



**E—SQUARE FILET MEDALLION**

Materials required:

ROYAL SOCIETY Cordichet White, size 50, 1 ball.  
size 10, 1 ball.

Steel crochet hook Nos. 12 and 9.

For rose medallion one ball, size 50, and one ball, size 10 to work around three squares for edge.

Start at letter A and work to letter B, continue working back and forth, following diagram, until square is complete. Around point of square medallion work edge.

**EDGE FOR SQUARES**

**1st Row**—Join squares at point. Work around square with ch. 5, sk. 2 sts., \* d.c. in next st., sk. 2 sts., repeat from \* to end, working two sts. on each point and omitting two sts. on each square between points.

**2d Row**—Start at point, 5 s.c. in space at point, \* 2 s.c. in next space, 1 p., 2 s.c., 1 p., 2 s.c. in next space, repeat from \* until 6 p. are worked, 2 s.c. in each of next six spaces, turn, sk. 5 s.c. just worked, ch. 5, 1 s.c. in next st., ch. 5, sk. 5 st., 1 s.c. in next st., turn, 11 s.c. around

first loop of ch., 6 s.c. around next loop of ch., turn, ch. 5, 1 s.c. in center s.c. of scallop, turn, 5 s.c., 1 p., 5 s.c. around loop of ch., then finish other scallop with 5 s.c. Repeat like in beginning of square with p. until five more ps. are worked. Start with 2 s.c. in each of next nine spaces, omitting center space between squares, 2 s.c. in each of next two spaces, turn, ch. 7, join to fourth s.c., turn, 11 s.c. worked around loop of ch., 2 s.c. in each of next three spaces, turn, ch. 7, 1 s.c. in center of 11 s.c. of previous row, ch. 7, sk. 4 s.c. on side of square, join, turn, 11 s.c. around each loop of ch., 2 s.c. in each of next three spaces, turn, ch. 7, 1 s.c. in center of loop of previous row, ch. 7, 1 s.c. in center of next loop, ch. 7, sk. 4 sts. on side, join to side, turn, 11 s.c. around each of next two loops, 6 s.c. in next loop, turn, ch. 7, 1 s.c. in center of next loop in previous row, ch. 7, 1 s.c. in center st. of next loop, turn, 11 s.c. around loop of ch., 6 s.c. around next loop, turn, ch. 7, 1 s.c. in center of next loop, turn, 6 s.c., 1 p., 6 s.c. worked around loop of ch. just worked. Then finish off two other loops, 5 s.c. in each loop. In following spaces along side of square work like beginning, 3 s.c., 1 p., 3 s.c., 1 p., 3 s.c., 1 p., 3 s.c., 1 p., 2 s.c., 1 scallop with three loops like on other side, 2 s.c., 3 s.c., 1 p., 3 s.c., 1 p., 3 s.c., 1 p., 3 s.c., 1 p., 3 s.c., 1 p. on point. Then repeat from beginning.

Finish with tassel on points if desired.

Filet crochet square motif with scallops, picots and tassels is illustrated in Scarf 22x54-inches, mounted on White Linen.

**A—FILET CROCHET MOTIVE ROSE DESIGN**

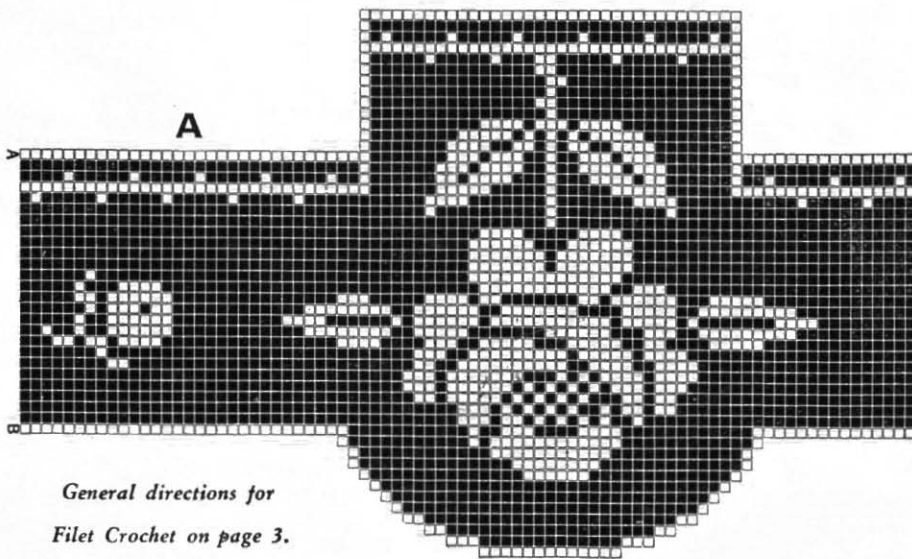
Materials required:

ROYAL SOCIETY Cordichet White, size 30, 2 balls  
For one large rose and two small roses.  
Steel crochet hook No. 11.

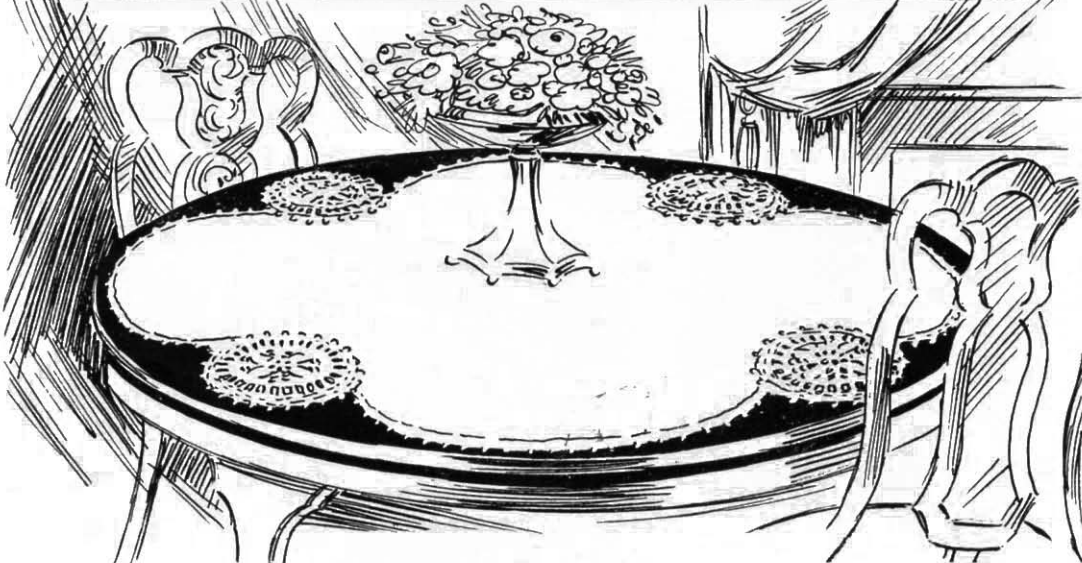
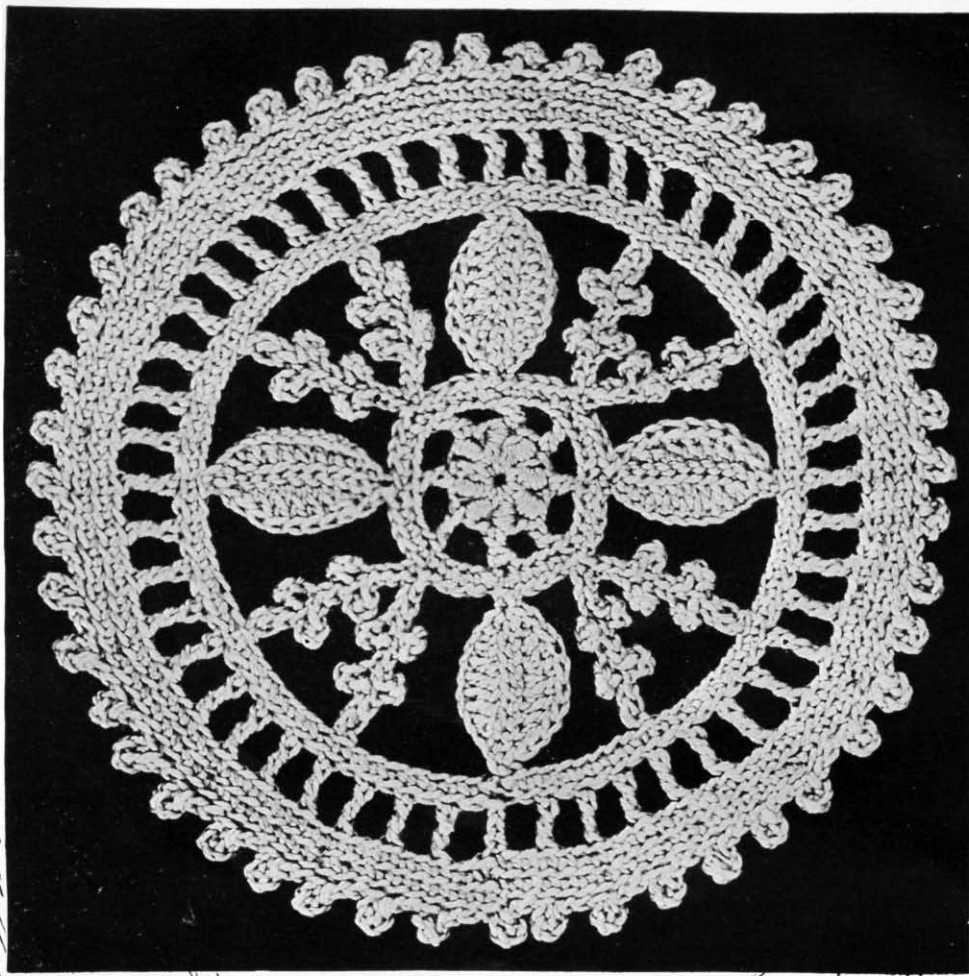
Start at letter A and follow diagram, working back and forth.

The filet crochet motive was used for a 45-inch square Tea Cloth and Scarf end as illustrated, mounted on White Linen or Cotton.

For Tea Cloth repeat the small Rose design for required length, working ten or more plain open mesh rows between two Rose designs. Work one row of s.c. and ps. across each Scarf end and around entire edge of Tea Cloth.

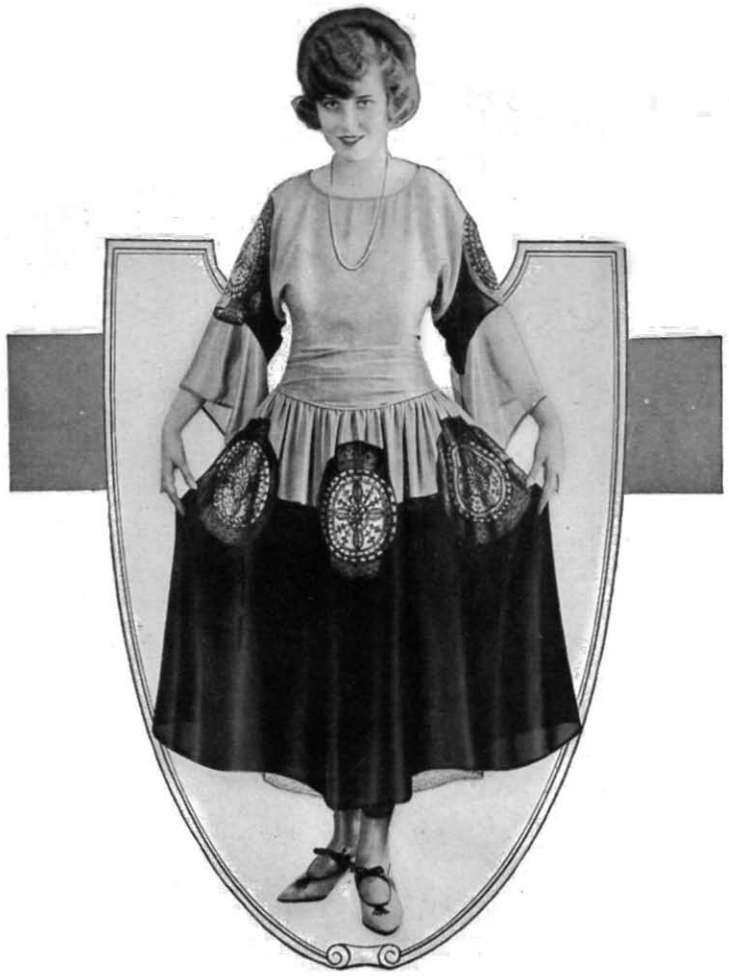


General directions for  
Filet Crochet on page 3.



Crochet Directions on opposite page

# Design M CIRCLE



# M—MEDALLION

Materials required :

ROYAL SOCIETY Crochet Ecrú 1010, size 3, 1 ball  
For one four-leaf center medallion.  
Steel crochet hook No. 5.

Ch. 3, join, then 8 roll sts. into ring, sl.st. to join row. (To make roll st. throw thread four times over hook, insert hook in ring and draw a loop through, thread over hook and draw through coil on hook, keeping roll straight, thread over, draw through one loop). Repeat this for each st.

**2d Row**—Ch. 6, \* 1 d.c. in top of roll st., ch. 3, repeat from \* around.

**3d Row**—\* Ch. 9, 1 s.c. in second ch. just worked, 1 d.c. in each of the next seven ch., 1 s.c. in last ch., work on other side of ch. 1 s.c. in first st., 1 d.c. in each of next seven ch., 1 s.c. in last ch. This forms leaf. Through center of leaf work 1 sl.st. in each st., making vein in center of leaf, 1 s.c. in each of following ch. 3, ch. 2, 1 p., ch. 2, 1 p., ch. 3, turn, sl.st. down on other side of ch. in each of first three ch., 1 p. in other side of p., sl.st. in each of next two ch., 1 p. on other side of p., sl.st. next two sts., sl.st. to top of d.c. in circle, ch. 2,

1 p., ch. 2, 1 p., ch. 3, sl.st. down other side of ch. in each of ch. just made, 1 p. in each side of p., sl.st. in each of next two ch., 1 p. on other side of p., sl.st. in each of next two ch., sl.st. in same st. as former chs., 1 s.c. in each of ch. 3 in previous row, repeat from \* around.

**4th Row**—\* Ch. 7, 1 s.c. in top of string of chs., ch. 7, 1 s.c. in top of next string of chs., ch. 7, 1 s.c. in point of leaf, repeat from \* around.

**5th Row**—1 s.c. in each st. around.

**6th Row**—Ch. 5, sk. 1 s.c. of previous row, \* 1 d.c. in next st., ch. 1, sk. 1, repeat from \* around.

**7th Row**—1 s.c. in each st. around.

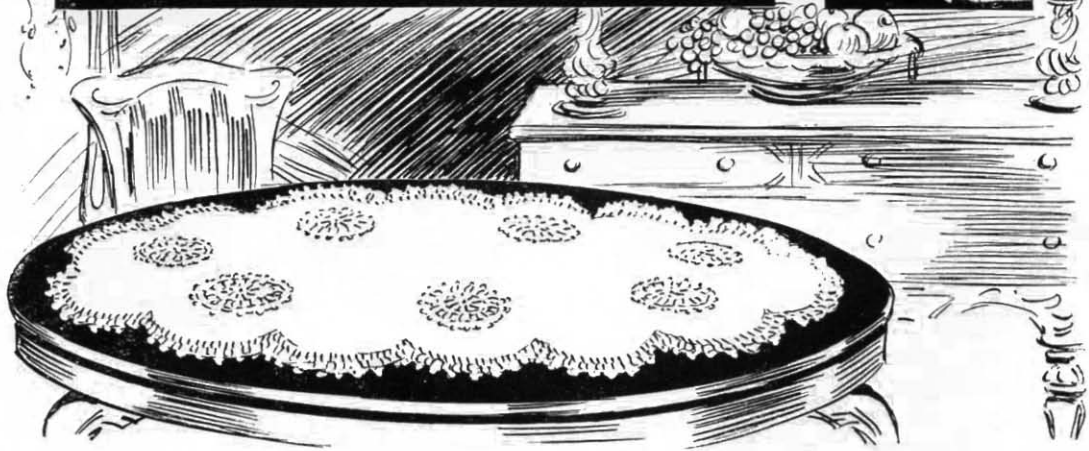
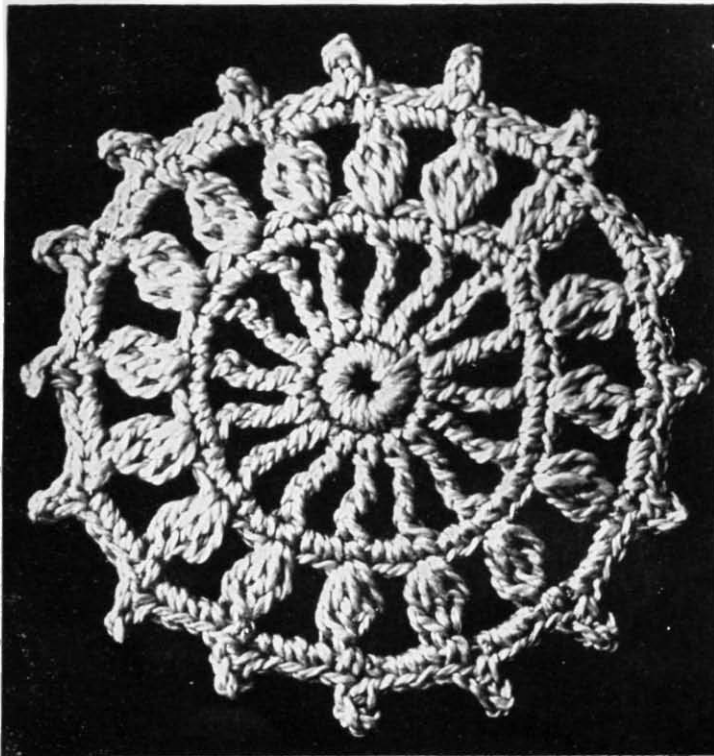
**8th Row**—1 s.c. in each st. around, taking up back st. only to form rib.

**9th Row**—\* sl.st. in each of next two sts., 1 p., repeat from \* around.

This medallion was used on a 36-inch Tan Linen Center.

The edge between medallions is finished with one row of s.c. and ps. as follows: Turn material on marked line, then work 4 s.c. into material, \* then 1 p., 4 s.c., repeat from \* all around the edge.

The medallion may also be worked in Royal Society Sweater Twist for dress decoration as illustrated. One spool will make two medallions.



## J-EDGE

Materials required:

ROYAL SOCIETY Crochet Ecu 1010, size 3, 1 ball  
For two yards shell edge.  
Steel crochet hook No. 5.

Into material work one row of s.c. around.

**2d Row**—Ch. 3, \* 3 d.c. (finished off together) worked in next st., ch. 3, 2 d.c. worked in top st. of group of d.c. just made, sk. 4, repeat from \* around.

The medallion and edging were used on a 36-inch Tan Linen Center.

## J-MEDALLION

Materials required:

ROYAL SOCIETY Crochet Ecu 1010, size 3, 1 ball  
For five motifs.  
Steel crochet hook No. 5.

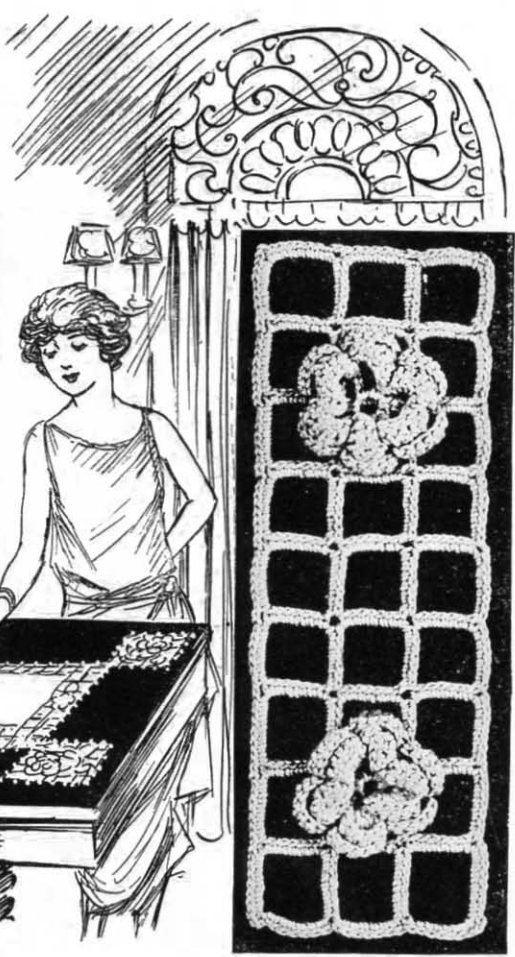
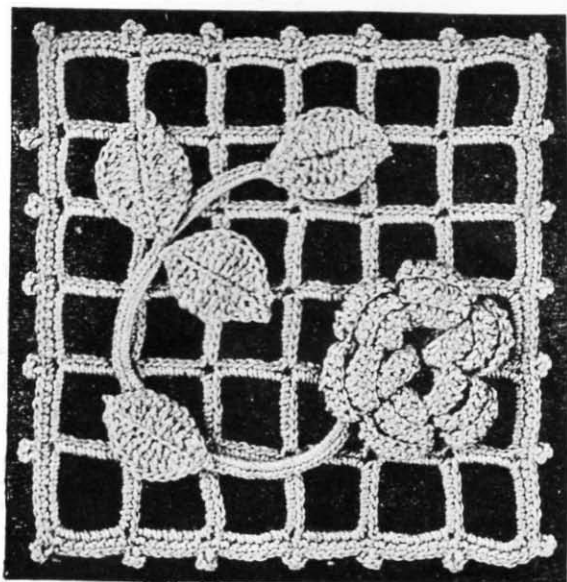
Ch. 5, join to ring, 16 s.c. worked in ring.

**2d Row**—Ch. 6, 1 tr.c., ch. 2 in each s.c. of previous row, join with sl.st.

**3d Row**—3 s.c. worked in each space between tr.c. of previous row.

**4th Row**—Ch. 3, \* 3 d.c. (all finished off together) worked in next st., sk. 2, ch. 3, repeat from \* around.

**5th Row**—4 s.c., 1 p. between each group of d.c. of previous row around.



# K—ROSE SPRAY SQUARE MOTIVE

Materials required  
ROYAL SOCIETY Crochet Ecu 1010, size 3, 2 balls  
For three square motives  
Steel crochet hook No. 5.

## ROSE

**1st Row**—Ch. 3, join to ring, close ring with sl.st., \* ch. 3, 1 s.c. in ring, repeat from \* until six loops are worked.

**2d Row**—Around loop of ch. \* 1 s.c., 6 d.c., 1 s.c., forming petal, repeat from \* around (6 petals).

**3d Row**—1 s.c. in s.c. of previous row, ch. 5, 1 s.c. in s.c. on other side of petal, working one loop of ch. in back of each petal.

**4th Row**—Around loop of ch. \* 1 s.c., 8 d.c., 1 s.c., forming petal, repeat from \* five times more (6 petals).

**5th Row**—1 s.c. in s.c. of previous row, ch. 7, 1 s.c. in s.c. on other side of petal, working one loop of ch. in back of each petal.

**6th Row**—Around loop ch., \* 1 s.c., 1 d.c., 1 t.r.c., 5 d.t.r.c., 1 t.r.c., 1 d.c., 1 s.c., repeat from \* around. This completes rose.

## LEAVES

Ch. 12, sk. first ch., 1 s.c. in next ch., 1 d.c. in next ch., 1 t.r.c. in next ch., 5 d.t.r.c., 1 t.r.c., 1 d.c., 1 s.c., work down on foundation ch., 1 s.c. in first st., 1 d.c. in next st., 1 t.r.c. in next st., 1 d.t.r.c. in each of next five sts., 1 t.r.c., 1 d.c., 1 s.c. This finishes leaf. Work three

more leaves for this spray. Stem to which leaves are joined is made of chs. with s.c. worked over same. Tack rose and leaves to stem.

## BLOCKED-SQUARE

**1st Row**—Ch. 24, join, 7 s.c., ch. 2, 7 s.c. worked around ch. just worked, turn, \* ch. 18, join in ch. 2 between 7 s.c. with 1 s.c., 7 s.c., ch. 2, 7 s.c. worked around ch., turn, repeat from \* until there are five blocks in sixth block of row, which is last block in row. Work 7 s.c., ch. 2, 7 s.c. all worked in same block, 7 s.c. in each space to end of row, turn.

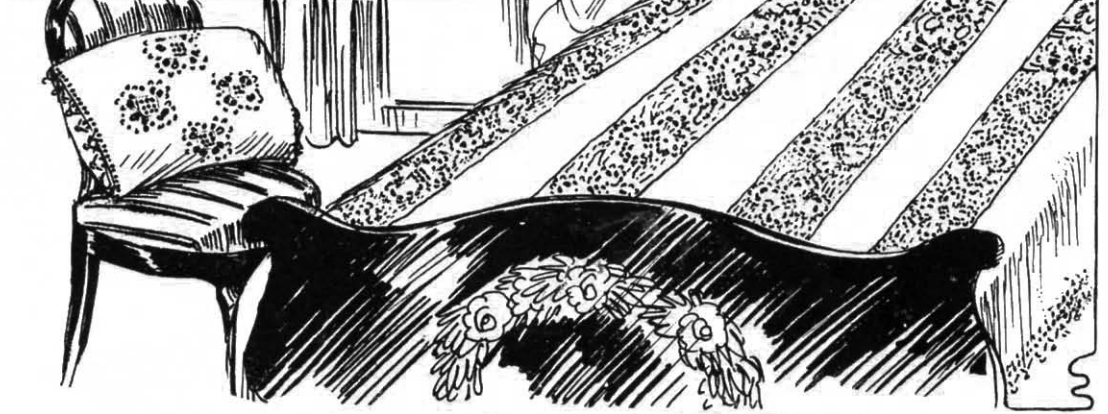
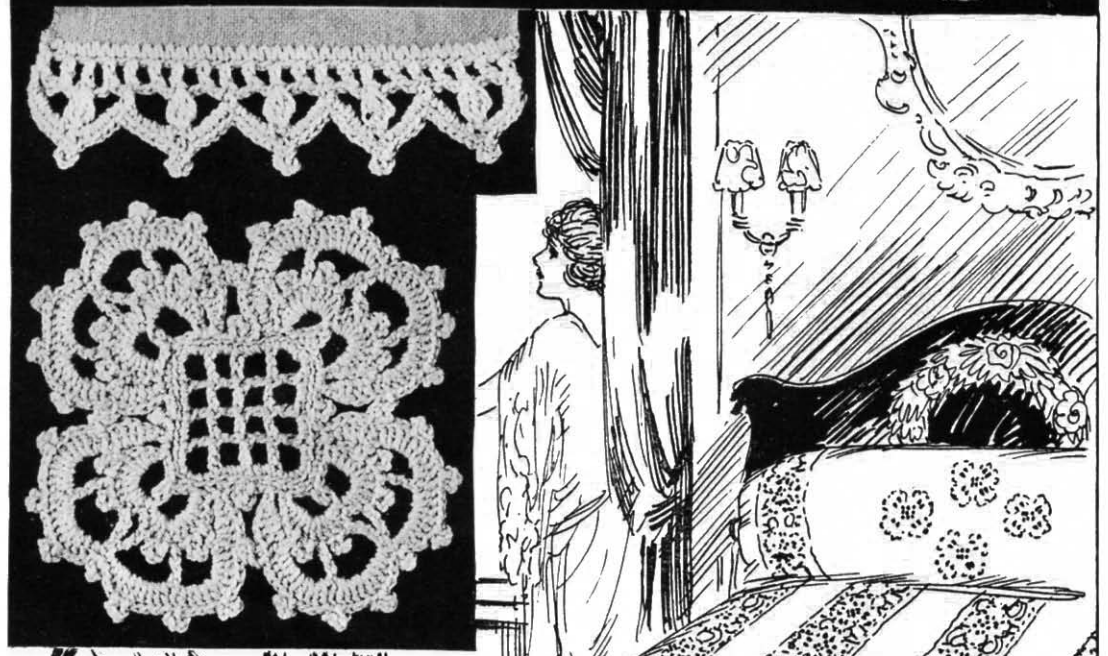
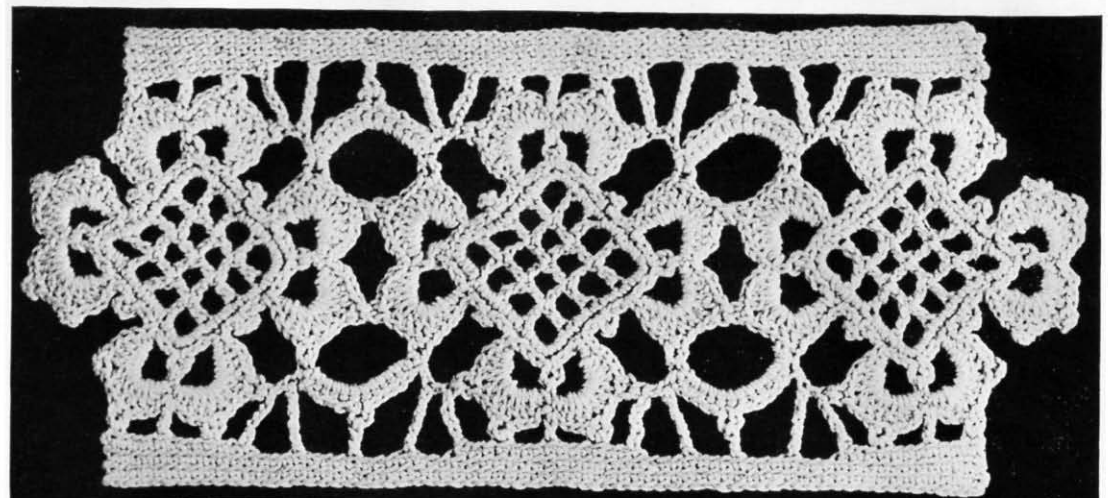
**2d Row**—In square, ch. 18, join with s.c. in ch. 2 of previous row, \* 7 s.c. worked around ch., ch. 12, join with s.c. in ch. 2 of previous row, repeat from \* until five blocks are worked in sixth block of row, work 7 s.c., ch. 2, 7 s.c. In each space work 7 s.c. to end of row, turn, repeat in same way until six rows of blocks are worked. Then work along side of edge to close square with 1 s.c. in each of 7 st., 1 p., picking up back st. only. Continue around square.

## INSERTION

Work three blocks for width of insertion exactly as described for square, then work back and forth for required length.

Rose—Work first four rows of the larger rose, then attach to blocked insertion as illustrated.

The motive and insertion were used for a 36-inch Tan Linen Table Cover.



Crochet Directions on opposite page

Design G

SQUARE MEDALLION  
EDGE INSERTION

# G—INSERTION

Materials required:

ROYAL SOCIETY Crochet Ecu 1010, size 3, 1 ball  
For 12 inches of insertion  
Steel crochet hook No. 5.

**1st Row**—Ch. 18, into ninth ch. work 1 d.c., ch. 2, sk. 2 ch., 1 d.c. in next ch., ch. 2, sk. 2 ch., 1 d.c. in next ch., ch. 2, sk. 2 ch., 1 d.c. in last ch., turn.

**2d Row**—Ch. 5, sk. 2 ch., 1 d.c. in d.c. of previous row, ch. 2, sk. 2 ch., 1 d.c. in d.c., ch. 2, sk. 2 ch., 1 d.c. in next d.c., ch. 2, sk. 2 chs., 1 d.c. in next ch., turn.

Work third and fourth rows like second row.

**5th Row**—Work around square of open m., 1 row s.c., 2 s.c. worked in each open m., 1 s.c. in s.c. on top of d.c., also 7 s.c. in each corner, working p. in center stitch on corner. Sl.st. to center of square, 1 p. on corner, sl.st. next two sts., turn, \* ch. 5, 1 s.c. in p. on corner, ch. 5, sk. two sl.sts. next to p., 1 s.c. in next st., turn, 1 s.c., 4 d.c., 1 p., 3 d.c., 1 p., 4 d.c., 1 s.c. worked around ch. 5, 1 s.c., 4 d.c., 1 p., 3 d.c., 1 p., 4 d.c., 1 s.c. worked around next ch. 5, sl.st. next two sts., 1 p., sl.st. to corner, 1 p. in corner, sl.st. next two sts., repeat from \* three times more, making four corners. Join squares together at p. on sides.

**1st Row**—Along sides start in p. on scallop, 1 s.c. in p., \* ch. 5, 1 d.c. in st. between scallop at point, ch. 5, 1 s.c. in next p., ch. 10, 1 s.c. in next p., ch. 5, 1 s.c. in p. on next corner scallop, ch. 8, 1 s.c. in next p. on next square, turn, 13 s.c. worked around loop of ch., sl.st. in each of six s.c. just made, 1 p. in next st., 1 sl.st. in each of last six s.c. in loop, ch. 5, 1 s.c. in next p., ch. 10, 1 s.c. in next p., repeat from \* for required length.

**2d Row**—Along side 1 s.c. in each of five ch., 1 s.c. in d.c. of previous row, 1 s.c. in each of next five ch., 1 s.c. in s.c., 1 s.c. in each of next three ch. of ch. 10 of previous row, ch. 5, 1 sex. in center of ch. of ch. 5, between scallop and loop of s.c. ch. 3, 1 d.c. in p. in center of loop of previous row, ch. 3, 1 sex. in center of ch. of ch. 5 in previous row, ch. 3, repeat from \* to end.

**3d Row**—Along side 1 s.c. in st., picking up back st. only. This will form ridge.

**4th Row**—Along side 1 s.c. in each st., picking up back st. only. Repeat other side of square in same manner.

# G—SQUARE MEDALLION

Materials required:

ROYAL SOCIETY Crochet Ecu, size 3, 1 ball  
For three motifs.  
Steel crochet hook No. 5.

**1st Row**—Ch. 18, into ninth ch. work 1 d.c., ch. 2, sk. 2 ch., 1 d.c. in next ch., ch. 2, sk. 2 ch., 1 d.c. in next ch., ch. 2, sk. 2 ch., 1 d.c. in last ch., turn.

**2d Row**—Ch. 5, sk. 2 ch., 1 d.c. in d.c. of previous row, ch. 2, sk. 2 ch., 1 d.c. in d.c., ch. 2, sk. 2 ch., 1 d.c. in d.c., ch. 2, sk. 2 ch., 1 d.c. in next ch., turn.

Third and fourth row like second row.

**5th Row**—Work around square of open m., 2 s.c. worked in each open m., 1 s.c. in st., also 7 s.c. in each corner.

To make corner sl.st. to center d.c. of square, 1 p. in s.c. over center of d.c., \* sl.st. to corner, 1 p. on corner, sl.st. next two sts., turn, ch. 5, 1 s.c. in p. on corner, ch. 5, sk. 2 sts. on other side of p., turn, 1 s.c., 3 d.c., 1 p., 3 d.c., 1 p., 3 d.c., 1 s.c. worked around ch. 5, 1 s.c., 3 d.c., 1 p., 3 d.c., 1 p., 3 d.c., 1 s.c. worked around next ch. 5, turn, ch. 3, sk. 3 sts. on scallop of previous row, 1 d.c. in next d.c. in previous row, ch. 5, sk. 1 st., 1 p., 1 st., 1 tr.c. in next st.

Ch. 5, sk. 1 st., 1 p., 1 st., 1 tr.c. in next st., sk. last two sts. on this scallop, also first two sts. in next scallop, 1 p. on top of two tr.c. just worked, ch. 5, sk. 1 st., 1 p., 1 st., 1 tr.c. in next st., ch. 5, sk. 1 st., 1 p., 1 st., 1 d.c. in next st., ch. 3, 1 s.c. in next st. to scallop on square, turn, 1 s.c., 4 d.c. around ch. 3, 1 d.c. in d.c. of scallop in previous row, 1 p., 5 d.c., 1 p., 5 d.c. all worked around ch. 5, 1 d.c. in tr.c. of previous row, 1 p., 5 d.c., 1 p., 5 d.c. worked around next ch. 5 of previous row, 1 p. on top of p. in between scallop in previous row, 5 d.c., 1 p., 5 d.c. around next ch. 5 of previous row, 1 d.c. in tr.c. of previous row, 1 p., 5 d.c., 1 p., 5 d.c. around next ch. 5 of previous row, 1 d.c. in d.c. of previous row, 1 p., 4 d.c., 1 s.c. around ch. 3 of previous row, sl.st. next two sts., 1 p., repeat from \*, working three more corners like one just worked. When working corners on last row of scallop join first p. on each side together to form square.

# G—EDGE

Materials required:

ROYAL SOCIETY Crochet Ecu 1010, size 3, 1 ball  
For one yard edging with scallop point.  
Steel crochet hook No. 5

Into material 1 row of s.c.

**2d Row**—Ch. 3, \* sk. 1 s.c. of previous row, 1 d.c. in next st., repeat from \* to end.

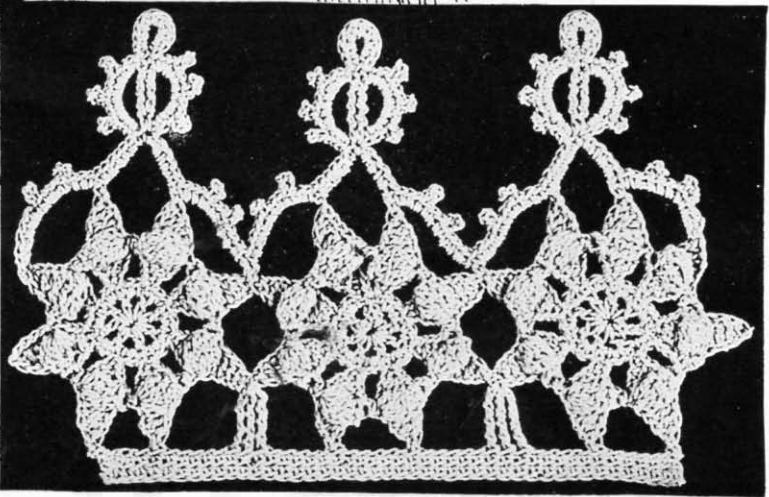
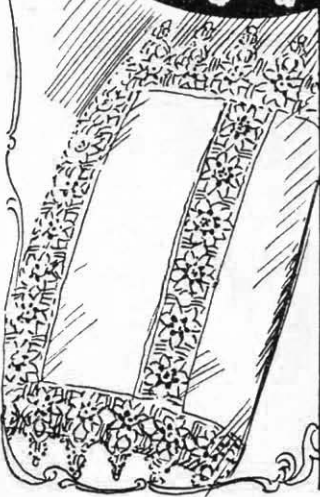
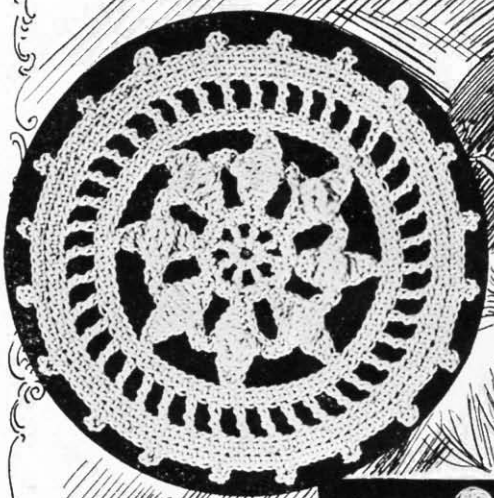
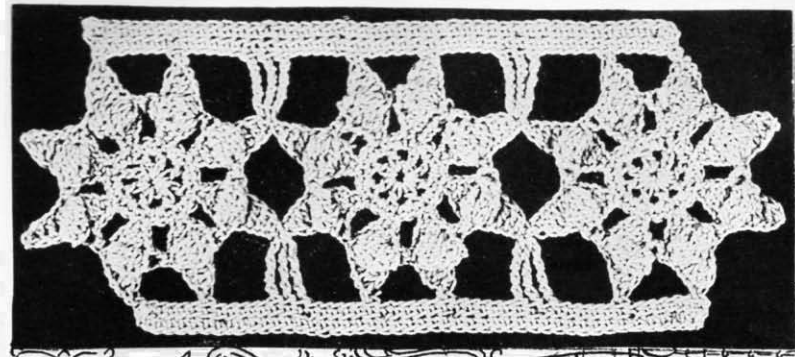
**3d Row**—1 s.c. in first d.c. of previous row, \* ch. 5, sk. next two spaces and work in next d.c. 3 d.c. finished off together, ch. 5, sk. two spaces, 1 s.c. in next d.c. of previous row, repeat from \* to end.

**4th Row**—5 s.c. around first five chs. of previous row, 1 p., 5 s.c. around next five chs., \* 5 s.c. around next five chs., 1 p., 5 s.c. around next five chs., repeat from \* to end of row.

G insertion, medallion and edging are illustrated in Bedspread, Bolster and Oblong Pillow and may be mounted on Linen or Scrim.

Bedspread for single size bed measures 72x96 inches; Bolster 22x54 inches, and Oblong Pillow 18x24 inches.



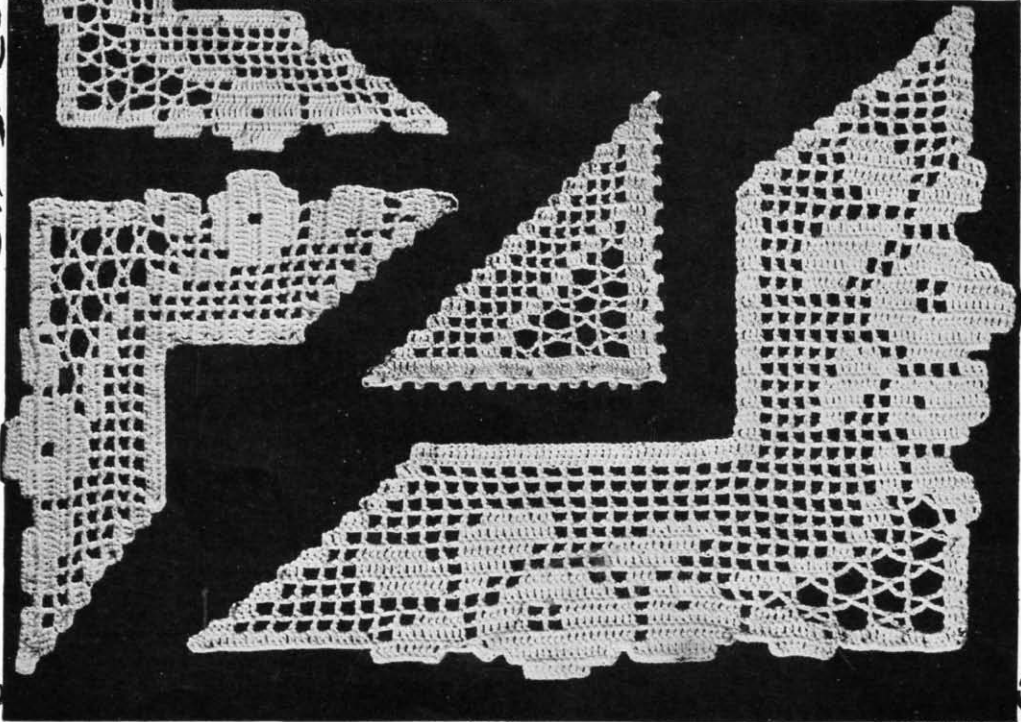
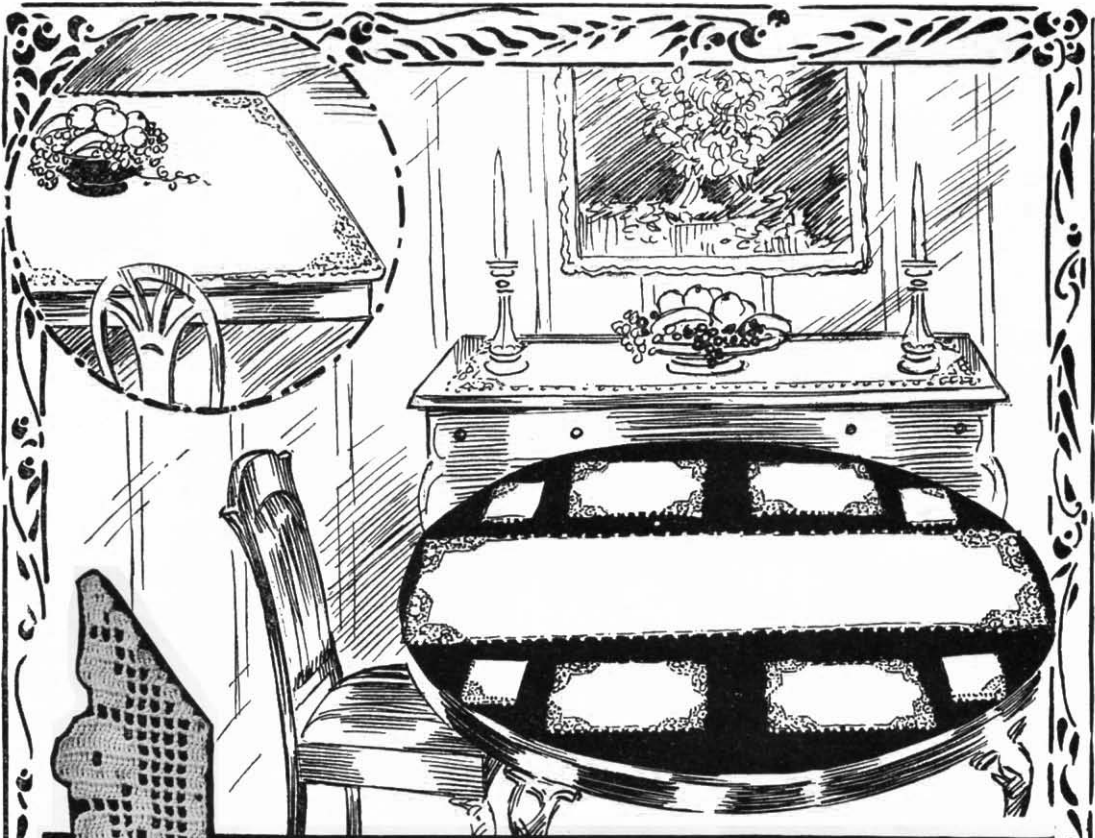


Crochet Directions on opposite page

# Design D

FANCY EDGE RAISED SHELL MEDALLION, INSERTION RAISED SHELL CENTER, ROUND MEDALLION WITH RAISED SHELL CENTER.





Crochet Directions on opposite page

# Design C

FILET CROCHET AND LACET CORNER MOTIVES

# C—FILET CROCHET AND LACET CORNER MOTIVES

Materials required:

ROYAL SOCIETY Cordichet White, size 10, 1 ball  
For one large size corner motive.

Steel crochet hook No. 9.

Cordichet White size 10, 1 ball for two medium size corner motives.

Cordichet White " 20, 2 balls for five " " " "

Steel Crochet Hook No. 10.

Cordichet White size 30, 1 ball for five small " " " "

Steel Crochet Hook No. 11.

Start at letter A, continue back and forth, following diagram, working lacet st. in corner. (Lacet st. is illustrated in front of book.

The large size corner motive was used for the 36-inch White Linen Lunch Cloth as illustrated.

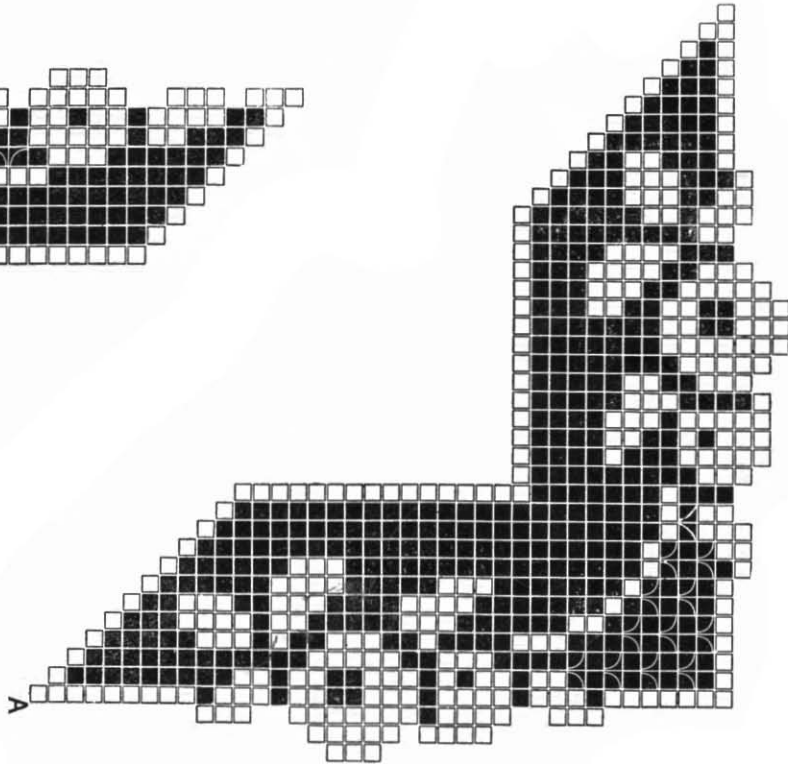
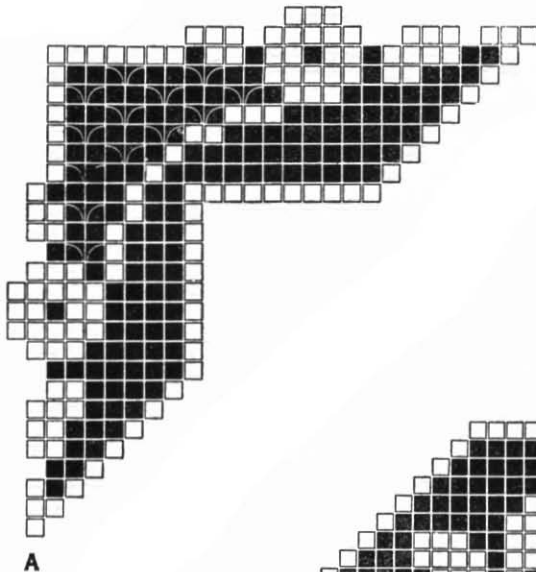
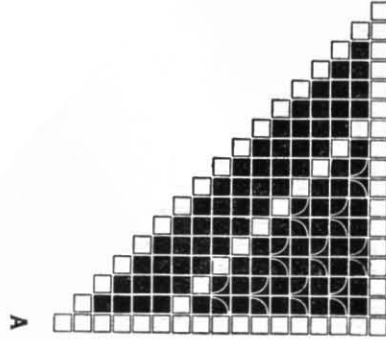
The medium size corner motive worked in size 10 was used for the long narrow table runner 14x45-inches.

The same size motive worked in size 20 was used for the service doilies 12x16-inches.

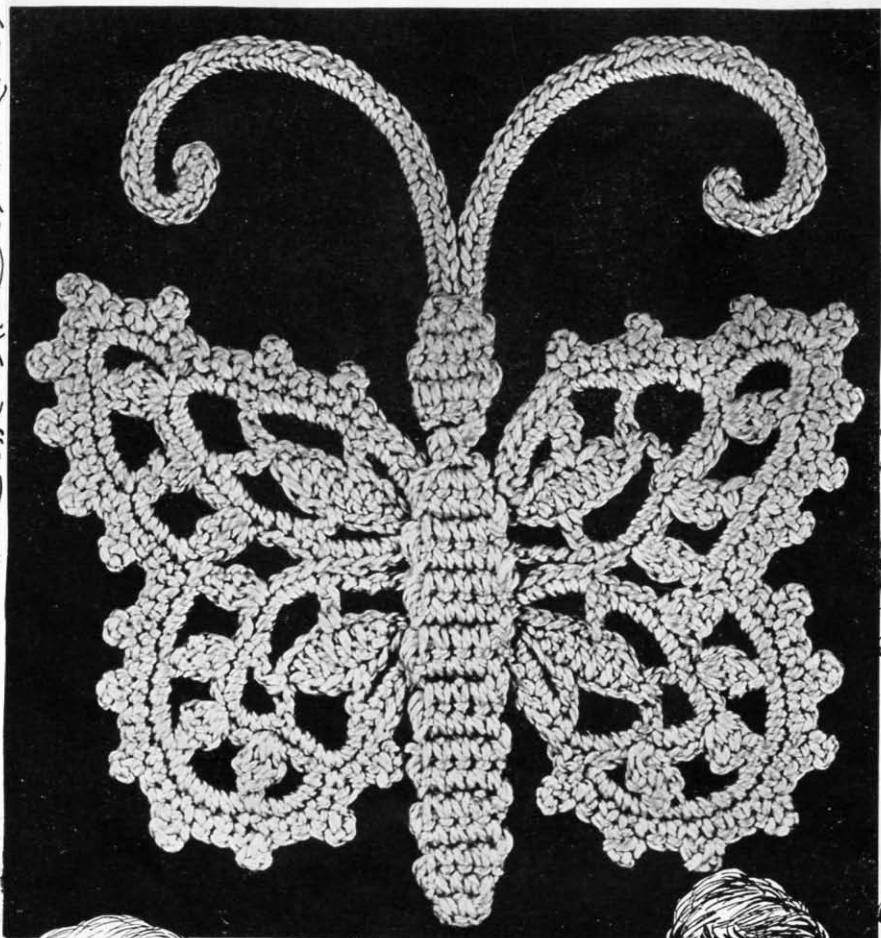
The smallest size corner motive was used for the napkins 12x12-inch.

Medium size corner motive worked in size 50 with steel crochet hook No. 12 may also be used for the napkins.

Work one row of s.c. and ps. into the material between the corner motives as follows: \* 4 s.c. into material, 1 p., repeat from \* all along the edge.



General directions for Filet Crochet on page 3.



Crochet Directions on opposite page

Design H INSERTION WITH SCALLOP EDGE BUTTERFLY

## H—BUTTERFLY

## Materials required :

ROYAL SOCIETY Crochet Ecu 1010, size 3, 1 ball  
For three butterflies.  
Steel crochet hook No. 5.

**1st Row**—Ch. 14, 1 d.t.r.c. in sixth ch., ch. 1, sk. 1 ch., 1 d.t.r.c. in next ch., ch. 1, sk. 1 ch., 1 d.t.r.c. in next ch., ch. 1, sk. 1 ch., 1 d.t.r.c. in next st., ch. 1, sk. 1 ch., 1 d.t.r.c. in next ch.

Start wing—1 sl.st. in first st., ch. 8, sk. first ch., 1 s.c. in next ch., 1 d.c. in each of next 5 chs., 1 s.c. in next ch., turn, ch. 4 (work around leaf) in 4 st. of leaf, ch. 6, 1 tr.c. in point of leaf, ch. 8, 1 tr.c. in same st. as last tr.c., ch. 6, 1 d.c. in sixth st. from point of leaf, ch. 4 in second st. from end of first row, turn. Around first ch. 4 made work 6 s.c. around next loop of ch. 6, work 6 s.c. around ch. 8, at point work 10 s.c. around next ch. 6, 6 s.c. around next ch. 4, 6 s.c. along first row, 1 s.c. in each of next 6 sts., ch. 8, sk. first ch., 1 s.c. in next ch., 1 d.c. in each of next 5 chs., 1 s.c. in next ch., turn, ch. 5, 1 d.c. in fifth st. on leaf, ch. 5, 1 d.t.r.c. in point of leaf, ch. 5, 1 d.t.r.c. in same st. as last d.t.r.c. in point, ch. 5, 1 d.c. in fifth st. from point, 1 d.t.r.c. in center s.c. between two leaves, join with sl.st. to sixth s.c. in other leaf. Then work 7 s.c. around first loop of ch., 13 s.c. around ch. at point, 7 s.c. around next loop of ch., 7 s.c. around next loop of ch., turn, sl.st. to center of second scallop, ch. 4, sk. 3 sts., 3 d.c. finished off together in next st., ch. 4, sk. 3 sts., 3 d.c. finished off together in next st., ch. 4, sk. 3 sts., 3 d.c. finished off together in next st., sk. 3 sts., 3 d.c. finished off together, sk. last 2 sts. on this leaf and first 3 sts. on next leaf, 3 d.c. finished off together in next st., ch. 4, sk. 3 sts., 3 d.c. finished off together, ch. 4, sk. 3 sts., 3 d.c. finished off together, ch. 4, sk. 1 st, 1 s.c. in next st., turn, 9 s.c. worked around first loop of ch., 7 s.c. around next loop of ch., 7 s.c. around next loop of ch., 7 s.c. around next loop of ch., 7 s.c. around next loop of ch., turn, sl.st. first 7 sts., 1 p., 3 s.c., 1 p., 3 s.c., 1 p., 3 s.c., 1 p., 3 s.c., 1 p., 3 s.c., 1 p., 3 s.c. on this leaf, 3 s.c. on connecting leaf, 1 p., 3 s.c., 1 p., 3 s.c., 1 p., 3 s.c., 1 p., 3 s.c., 1 p. on point, 3 s.c., 1 p., 3 s.c., 1 s.c. in each of next 3 sts., 1 p., 3 s.c., 1 p., 1 s.c. in each of next 7 sts., sl.st. to center. Repeat other wing in same manner.

## BODY

Ch. 1, 2 s.c. worked in this ch., turn, ch. 1, 2 s.c. in each s.c., ch. 1, turn, 1 s.c. in each st., turn, ch. 1, 1 s.c. in each st., turn, ch. 1, sk. first st., 1 s.c. in each of next 2 sts., turn, ch. 1, 1 s.c. in each of 2 sts., turn, ch. 1, 2 s.c. in first st., 1 s.c. in next st., turn, ch. 1, 4 s.c. in next row. Work back and forth on 4 sts. for 16 rows. Then decrease until 1 st. is left. Sew in center between wings. Feelers are made with string of ch. covered with s.c., ch. 42, then work over ch. with s.c. Work two alike and sew to butterfly.

## H—INSERTION WITH SCALLOP EDGE

## Materials required :

ROYAL SOCIETY Cordicet 3016, size 50, 2 balls.  
Steel crochet hook No. 12.

**1st Row**—Ch. 17, 1 d.c. in eighth ch., sk. 2 ch., 1 d.c. in next st., sk. 2, ch. 2, 1 d.c. in next st., ch. 2, sk. 2 ch., 1 d.c. in next st., turn.

**2d Row**—Ch. 5, sk. 2 ch., 1 d.c. in next st., ch. 5, sk. two open spaces, 1 d.c. in next d.c., ch. 2, sk. 2 ch., 1 d.c. in next d.c., turn.

**3d Row**—Ch. 5, sk. 2 ch., 1 d.c. in next d.c., ch. 2, sk. 2 ch., 1 d.c. in next d.c., ch. 2, sk. 2 ch., 1 d.c. in next d.c. in next d.c., ch. 2, sk. 2 ch., 1 d.c. in next d.c., turn.

**4th Row**—Ch. 5, sk. 2 ch., 1 d.c. in next d.c., ch. 2, sk. 2 ch., 1 d.c. in next d.c., 2 d.c. in space around ch., 1 d.c. in d.c., ch. 2, sk. 2, 1 d.c. in next d.c., turn.

**5th Row**—Same as third row.

**6th Row**—Same as second row.

**7th Row**—Same as third row, turning on each row.

**8th Row**—Ch. 5, sk. 2 ch., 1 d.c. in next d.c., 5 d.c. in next space around ch., turn, sl.st. to first d.c. of five d.c. just worked, turn, 1 d.c. in d.c. of previous row (this forms raised shell). Ch. 2, sk. 2 ch., 1 d.c. in next d.c., 5 d.c. worked in space around ch., turn, sl.st. to first d.c. of 5 d.c., turn, 1 d.c. in d.c. of previous row, turn.

**9th Row**—Ch. 5, sk. 1 raised shell, 1 d.c. in next d.c. of previous row, 5 d.c. in space around ch., 1 d.c. in d.c., ch. 2, sk. 2 ch., 1 d.c. in d.c., ch. 2, sk. 2 ch., 1 d.c. in next d.c., turn.

**10th Row**—Same as eighth row.

**11th Row**—Same as seventh row. Then repeat from second row again.

Along side work \* 3 s.c. in first space, 3 s.c. in next space, 1 p., repeat from \* the required length.

Along other side \* 3 s.c. in first space, 1 p., 3 s.c. in next space, 3 s.c. in next space, 3 s.c. in next space, turn, ch. 8, sk. 6 s.c., 1 s.c. in next st., turn, 5 s.c., 1 p., 5 s.c., repeat from \* for required length.

## NARROW EDGING

Work one row of open mesh, then work p. Along top work \* 3 s.c. in first space, 3 s.c. in next space, 1 p., repeat from \* the required length.

Along bottom of mesh work scallop, \* 3 s.c. in first mesh, 1 p., 3 s.c. in next mesh, 3 s.c. in next space, 3 s.c. in next mesh, turn, ch. 8, sk. 6 s.c., 1 s.c. in next st., turn, 5 s.c., 1 p., 5 s.c., repeat from \* the required length.

This butterfly motive was used for a 36-inch Tan Linen Center, also for a Nightgown worked with Royal Society Cordicet No. 3016 Pink, size 50, as illustrated.

Insertion with scallop edge and narrow edging were also used for the Nightgown.



NIGHTGOWN No. 1447

For Butterfly Design and Crochet Instructions see pages 34 and 35

ROYAL SOCIETY

# ROYAL SOCIETY SWEATER TWIST

## An Artificial Silk



This very stylish sweater is made with Sweater Twist and complete directions are given in Royal Society Sweater Book No. 20. There are various other equally attractive sweaters shown in Book No. 20.

Delightfully different from any other. It is possessed of advantages distinctly its own. It is of a quality unusually superior, not alone in its wonderful lustre, but particularly in its superior fibre, which is of the same high quality as used in Celesta.

Anything made from Royal Society Sweater Twist has that air of richness which suggests quality and good taste.

The fastness of its colors, dyed with special dyes; its smooth, even twist that will not split or catch in the crochet hook, emphasize it as the favorite material women of fashion are using to get perfectly beautiful results. They want their sweaters to drape gracefully to the figure, look stylish and give good service.

You can make handsome lampshades with Royal Society Sweater Twist; medallions for dress trimming and millinery, also bedspreads, negligees, curtains, hand bags, tams, silk fringes, etc.

Anything you crochet with this superior quality material will give a world of pleasure and satisfaction.

*Made in the following fashionable Colors*

- |                 |                     |
|-----------------|---------------------|
| 550-CREAM       | 585-ORCHID          |
| 555-BUFF        | 590-MARIGOLD        |
| 560-BLACK       | 595-NAVY            |
| 565-ROSEBUD     | 600-AMERICAN BEAUTY |
| 570-BLUE BELL   | 605-MINT GREEN      |
| 575-GOLD        | 610-SILVER GREY     |
| 580-ANTIQUEROSE | 625-CHESTNUT BROWN  |

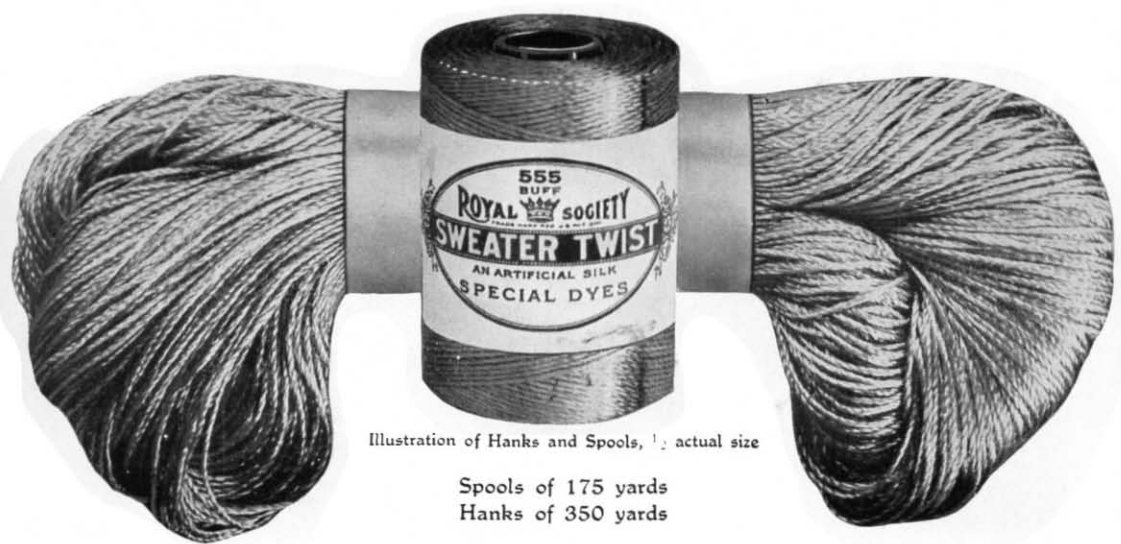


Illustration of Hanks and Spools, 1/2 actual size

Spools of 175 yards  
Hanks of 350 yards

FOR SALE BY DEALERS EVERYWHERE



# Royal Society Crochet Cottons

## CORDICHET

BLACK LABEL

A six-cord, hard twisted thread known as "The Perfect Crochet Cotton" because of the satisfaction it has given. It is smooth and even and has a beautiful lustre.

Cordichet is particularly recommended for Filet Crochet, trimming undergarments and making nightgown yokes; For Irish Crochet, tatting and all kinds of lace; for edgings, insertions, scarf ends, centers, bedspreads, etc., and to trim children's dresses.

WHITE—Sizes 3 to 100  
 ECRU—Sizes 3 to 50  
 COLORS—Sizes 10, 30 and 50



## TWO-PLY CROCHET

A Soft Twist

A highly mercerized soft twist, made in White and Fast Colors in sizes 3 and 5. It will not rough up or kink. Due to its even twist and smoothness one may crochet or knit rapidly. The soft, silken lustre of Two-Ply gives added beauty to the finished work and it is excellent for crocheting slippers, hand bags, sweaters, towel ends, wash cloths, curtains, scarfs and centers, children's caps, etc.

Put Up in Two-Sized Balls

STANDARD SIZE BALL  
 Sizes 3 and 5

SMALL SIZE BALL  
 Sizes 03 and 05